



**No. 1 - 4 oz. Plain Custard, 1-Handle  
Original 1903 Number & Description  
Shown**



**No. 1 - 6 oz. Paris Jar, Square with  
Round Corners  
Original 1903-1905-1907 Number &  
Description Shown**

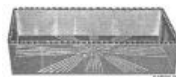
Available sizes:

4 oz.  
6 oz.  
8 oz.  
12 oz.

2 pound, Tall  
2 pound, Squat (4½" width, 4½" shoulder  
Ht)

4 pound  
5 pound  
8 pound

Ground or Drop Stopper



**No. 1 - 6" x 8" Candy Tray  
Original 1903-1905-1907 Number &  
Description Shown**  
Standard Size  
Available Opal



**No. 2 - 4 Pound Paris Jar, Square with  
Beveled Corners  
Original 1903-1905-1907 Number &  
Description Shown**  
Also made in 9 pound size  
Ground or Drop Stopper



**No. 2 - 5" x 8" Post Candy Tray  
Original 1903-1905-1907 Number &  
Description Shown**  
Standard Size



**No. 3 - 5 oz. Footed Sherbet, Plain  
Original 1903-1905-1907 Number &  
Description Shown**



**No. 3½ - 5 oz. Footed Sherbet, Optic**



**No. 5 - 5 oz. Footed Sherbet, Saucer  
Foot, A Shape (Round)**  
Available Belled Shape



**No. 7 - 2 Pound Round Candy Jar and  
Cover**  
Also made in 4 pound size  
Flanged Stopper



**No. 7 - 4 Pound Round Kitchen or  
Candy Jar with Cover**  
Also available No. 7 - 3 Pound Round  
Kitchen or Candy Jar with Cover



**No. 8 - 2 Pound Squat Candy Jar,  
Squat Shape, 5" Shoulder Ht, 4½"  
Width**

Same style as No. 1 Paris Jar  
Ground or Drop Stopper  
Designed for Candy Sticks



**No. 8 - 3 Pound Squat Kitchen or  
Candy Jar, Tall Shape, with Ground  
Cover**



**No. 9 - 4 Pound Octagon Candy or  
Tablet Jar**  
Ground or Drop Stopper



**No. 9 - 3½ oz. Colonial Footed  
Sherbet, Saucer Foot**



**No. 10 - 3 oz. Blown Horseradish Jar,  
Ground Stopper**

Also available:  
No. 10 - 3½ oz. Blown Horseradish Jar,  
Ground Stopper  
No. 10 - 4 oz. Blown Horseradish Jar,  
Ground Stopper



**No. 10 - 5 oz. Colonial Footed Sherbet**  
Available Finished or Unfinished Foot



**No. 11 - 2 Pound Squat Chewing Gum  
or Candy Jar and Cover**

Also  
No. 11 - 42 oz. Squat Candy Jar, Drop  
Stopper

No. 12 - 48 oz. Tall Candy Jar



**No. 11 - 3½ oz. Footed Sherbet,  
Saucer Foot**



**No. 14 - 1¼ Gallon Tall Display Jar  
and Cover, 7" Dia - 9" Ht**  
This Jar has a rubber gasket between Jar  
and Cover



**No. 14 - 4½ oz. Colonial Footed  
Sherbet**

Available Finished or Unfinished Foot  
Also made No. 14½ - 3 oz. Colonial  
Sherbet, Heavy Sham Bottom

Search results - "feb22"

Main Menu

- Home
- Login

- Album list
- Search



No. 15 - 6 1/4 oz. Footed Sherbet, Saucer Foot



No. 15 1/2 - 6 1/4 oz. Footed Sherbet, Saucer Foot, Optic



No. 15 1/2 - 6 1/4 oz. Footed Sherbet, Saucer Foot, Optic, Belled



No. 16 - 5 oz. Footed Sherbet, Touraine Shape, Saucer Foot



No. 17 - 26 oz. Decanter, Paste Mold  
Available Ground Stopper, Cut Stopper, Cut Neck



No. 18 - 32 oz. Decanter, Paste Mold  
#18 available in 8 oz. & 16 oz. sizes  
#18 is same size & shape as #312 made from iron mold  
Available Ground Stopper, Cut Stopper, Cut Neck



No. 19 - 4 1/2 oz. Footed Sherbet, Saucer Foot



No. 20 - 50 oz. Water Bottle, Paste Mold  
Available Cuttings: 19, 29, 60, 61, 73, 122 (3, 6, or 9 Stars), 123, 503, 509, 512, 545  
Available: plain or optic also Cut Neck



No. 20 - Nested Kitchen Mixing Bowls  
Set contains: 5", 6", 7", 8", 9", 10" and 11" sizes



No. 20 - Nested Kitchen Mixing Bowls, Lipped  
Made in 5", 6", 7", 8", 9", 10" and 11" sizes



No. 20 - Display Globe and Cover  
Available Sizes:  
2 gallon, 10 1/2" Dia  
2 1/2 gallon, 11 1/4" Dia  
3 gallon, 12" Dia  
3 1/2 gallon, 12 1/2" Dia  
4 gallon, 13" Dia  
5 gallon, 14" Dia  
6 gallon, 14 1/4" Dia  
These jars are fitted with rubber ring between Cover and Jar  
Same mold used to make No. 20 - Fish Globe



No. 20 - 5 1/2" Hotel Oatmeal Saucer



No. 21 - 54 oz. Water Bottle, Paste Mold  
Available Cuttings: 19, 29, 60, 61, 73, 122 (3, 6, or 9 Stars), 123, 503, 509, 512, 545  
Available: plain or optic also Cut Neck



No. 22 - 44 oz. Oval Water Bottle, Optic, Paste Mold  
Available Cuttings: 19, 29, 60, 61, 73, 122 (3, 6, or 9 Stars), 123, 503, 509, 512, 545  
Available: plain or optic also Cut Neck



No. 22 - 1 Pound Kitchen Jar and Cover  
Actual capacity 2 pounds



No. 22 - 2 Pound Kitchen Jar and Cover  
Actual capacity 3 pounds



No. 22 - 5 oz. Footed Sherbet, Saucer Foot  
Also made: No. 5 - 5 oz. Footed Sherbet, Saucer Foot (No Image Available)



No. 23 - 36 oz. Water Bottle, Optic, Paste Mold  
Available: Cut Neck



No. 23 - 6 1/2 oz. Footed Sherbet  
Made to stack



No. 25 - 50 oz. Water Bottle, Paste Mold, Private Etching "United Fruit Company"  
Available: Cut Neck

Search results - "feb22"

Main Menu

- Home
- Login

- Album list
- Search



**No. 25 - 1 Gallon Display or Fish Globe, Ground Top, Iron Mould**

Available Sizes:  
½ Gallon, 6½" Dia  
1 Gallon, 8½" Dia



**No. 25 - Squat Ring Jar and Cover**

Same as Later Number: No. 761 - Squat Ring Jar & Cover  
Available Sizes:  
½ Gallon  
¾ Gallon  
1 Gallon



**No. 25 - 5 oz. Footed Sherbet or Ice Cream**

Foot Available Finished or Unfinished



**No. 26 - 28 oz. Water Bottle, Paste Mold**

Available Cuttings: 19, 29, 60, 61, 73, 122 (3, 6, or 9 Stars), 123, 503, 509, 512, 545

Available: plain or optic also Cut Neck



**No. 27 - 40 oz. Water Bottle, Paste Mold**

Available: Cut Neck



**No. 27 - 6½ oz. Footed Sherbet, Saucer Foot**

Also No. 27½ - 6½ oz. Footed Sherbet, Saucer Foot, Optic



**No. 30 - 8 oz. Squat Oil Bottle, Ground Stopper**

Options: Cut Stopper, Cut Neck, Star Bottom, Ground Stopper Polished-in



**No. 31 - 7 oz. Squat Oil Bottle, Ground Stopper**

Options: Cut Stopper, Cut Neck, Star Bottom, Ground Stopper Polished-in



**No. 32 - 6 oz. Oil Bottle, Ground Stopper, Cut Neck, Cut Stopper, E Marjorie**

**No. 32 - 6 oz. Tall Oil Bottle, Ground Stopper**

Options: Cut Stopper, Cut Neck, Star Bottom, Ground Stopper Polished-in



**No. 33 - 8 oz. Squat Oil Bottle, Ground Stopper**

Options: Cut Stopper, Cut Neck, Star Bottom, Ground Stopper Polished-in



**No. 34 - Footed Display Globe and Cover**

Available Sizes:  
2 gallon, 10½" Dia  
2½ gallon, 11¼" Dia  
3 gallon, 12" Dia  
3½ gallon, 12½" Dia  
4 gallon, 13" Dia  
5 gallon, 14" Dia  
6 gallon, 14¼" Dia  
These jars are fitted with rubber ring between Cover and Jar  
Same mold used to make No. 34 - Footed Fish Globe



**No. 40 - Low Aquaria, Lemonade or Pickle Display Jar**

Available sizes:  
½ Gallon - 7" Dia, 4½" Ht  
1 Gallon - 8" Dia, 5" Ht  
1½ Gallon - 9" Dia, 5½" Ht  
2 Gallon - 10" Dia, 6¼" Ht  
2½ Gallon - 11" Dia, 7" Ht  
3 Gallon - 12" Dia, 7½" Ht  
3¾ Gallon - 13" Dia, 7½" Ht  
4½ Gallon - 14" Dia, 8½" Ht  
5½ Gallon - 15" Dia, 8½" Ht  
7 Gallon - 16" Dia, 9¼" Ht  
8½ Gallon - 17" Dia, 9¾" Ht  
10 Gallon - 18" Dia, 10½" Ht



**No. 45 - Tall Lemonade or Display Jar and Cover**

Available Sizes:  
½ Gallon - 6" Dia  
1 Gallon - 7" Dia  
1½ Gallon - 8½" Dia  
2 Gallon - 9" Dia  
3 Gallon - 10" Dia  
4 Gallon - 11" Dia  
5 Gallon - 12" Dia  
6 Gallon - 13" Dia  
8 Gallon - 14" Dia  
10 Gallon - 15" Dia  
12 Gallon - 16" Dia  
Same mold used to make No. 45 - Tall Aquaria or Lemonade  
Also No. 40 Low Lemonade Jar



**No. 46 - 48 oz. Jug, Paste Mold**

Also available: No. 46 - 64 oz. Jug, Paste Mold  
Also No. 111 - 48 oz. Jug, Iron Mold



**No. 46 - 48 oz. (3 Pint) Jug, E Wedgewood**

Listed as Wedgewood No. 59  
Also No. 46 - 3½ Pint Jug, E Wedgewood, Listed as Wedgewood No. 60



**No. 047 - Individual Salt Dip**

Available Needle Etching 218, Needle Etching 311



**No. 48 - 3½ Pint Jug, E Wedgewood**

Listed as Wedgewood No. 57  
Also listed as Adams No. 57



**No. 49 - 60 oz. Jug, Paste Mold**

Available Light or Heavy Weight



**No. 50 - 54 oz. Jug, Paste Mold**

Available Light or Heavy Weight  
See also No. 105, Iron Mold version

Search results - "feb22"

Main Menu

- Home
- Login

- Album list
- Search



**No. 57 - 9 oz. Kitchen Tumbler, Ground Bottom**  
Originally U. S. No. 646



**No. 67 - 7" Candy Tray**  
Also made in 8" and 9" sizes  
Available Finished or Unfinished



**No. 91 - 77 oz. Jug and Cover (1920s Version)**



**No. 91 - 10" x 3/4" Bud Vase, Cut 884**  
Also No. 90 - 8" Bud Vase, Cut 884  
No. 92 - 12" Bud Vase, Cut 884



**No. 93 - 53 oz. Tankard, Plain, Iron Mold**  
9 1/2" Ht  
Also No. 51 from paste mold  
Also No. 51 1/2 - 48 oz. and 64 oz. sizes from paste mold



**No. 96 - 3 Pint Standard Tankard, 8 1/2" Ht**  
Available Needle Etching 288, Needle Etching 309  
48 oz.



**No. 96 - 1/2 Gallon Tankard, Optic, Metal Strainer Top**  
Also listed as: No. 96 - 1/2 Gallon Syrup Pitcher



**No. 98 - 77 oz. Squat Tankard, Iron Mold**  
Available Cover



**No. 98 - 77 oz. Jug and Cover, E524 Betty**  
Also available No. 98 - 77 oz. Jug, E523 Chrsanthemum



**No. 99 - Footed Hotel Salver, Plain**  
Available Sizes (Dia x Ht):  
8" x ?  
9" x 7 1/4"  
10" x 7 3/4"  
11" x 8 1/4"  
12" x 9"  
14" x 10"



**No. 100 - 3 oz. Tall Oil Bottle, Ground or Drop Stopper**



**No. 100 - Condiment, Candy or Spice Jar**

Available Sizes:  
3/4 oz.  
1 oz.  
2 oz.  
4 oz.  
6 oz.  
8 oz.  
12 oz.  
16 oz.  
32 oz.

Available with:  
Nickle Plated Zinc Cap, paper liner  
Nickle Plated Zinc Cap, cork liner  
Polished Tin Cap  
Crystal in stock, Blue and Amber available in quantity orders



**No. 100 - 4 oz. Extra Tall Condiment or Candy Jar**

Made only in 4 oz.  
Available with:  
Nickle Plated Zinc Cap, paper liner  
Nickle Plated Zinc Cap, cork liner  
Polished Tin Cap



**No. 103 - 38 oz. Guest Room Jug and Tumbler; or 2-piece Nite Set, Iron Mold**  
Includes No. 4115 - 38 oz. Guest Room Paste Mold Jug and No. 4115 - Paste Mold tumbler  
Available E752 Diane, E754 Portia, E762 Elaine, E773 Wildflower, Needle Etching 319



**No. 106 - 30 oz. and 66 oz. Jug and Cover, Iron Mold**  
Available D/145 Gold Encrusted Minton Border, E Cleo, E408, Needle Etching 218, Needle Etching 272, Needle Etching 310, Needle Etching 311, Needle Etching 317, Needle Etching 322



**No. 106 - 66 oz. Jug and Cover, Cut 4072**  
Available Needle Etching 288, Needle Etching 309



**No. 106 - 8 oz. Mustard or Marmalade Cover**  
Fits No. 131 - Mustard or Marmalade



**No. 106 - 8 oz. Syrup and Cover, E405 (Crystal)**  
Handle hidden  
Available with Plate



**No. 106 - 8 oz. Syrup and Cover, E Wedgewood (Crystal)**  
Listed as Wedgewood No. 24  
Also available as Adams No. 24  
4 1/4" Ht



**No. 106 - 8 oz., 12 oz., 30 oz. and 66 oz. Jug and Cover, E408**

Search results - "feb22"

- [Home](#)
- [Login](#)
- [Album list](#)
- [Search](#)



**No. 106 - 8 oz. Syrup and Cover, E Marjorie**  
Available with Plate



**No. 106 - 8 oz. Syrup Jug and Cover, E Martha**  
Also available with Plate



**No. 106 - 8 oz. Syrup, Cover and Plate, E Wedgwood**  
Listed as Wedgwood No. 25  
Also available as Adams No. 24  
Available E408, Needle Etching 218, Needle Etching 272, Needle Etching 310, Needle Etching 311, Needle Etching 319



**No. 106 - 12 oz. Syrup, Cover and Plate, E Wedgwood**  
Listed as Wedgwood No. 27  
Also No. 106 - 12 oz. Syrup and Cover, E Wedgwood Listed as Wedgwood No. 26



**No. 107 - 22 oz. Jug**  
Sold with or without cover  
Available Crackle  
6" Ht w/Cover



**No. 107 - 66 oz. Jug and Cover, Iron Mold**  
Available Crackle, with or without Cover  
Available Needle Etching 319



**No. 107 - 76 oz. Jug**  
1935 Mold Change: No. 107 76 oz. Jug mold was changed to add Plain Lip and Spiral Optic  
Mold was again changed from 1206 Lipped Jug to 1206 Ice Lipped Jug  
Also made in 22 oz. size



**No. 108 - 3 1/2 Pint Jug, E405**  
Available Needle Etching 218, Needle Etching 311



**No. 109 - 39 oz. Jug**  
Also available No. 109 - 62 oz. Jug  
Available plain & optic



**No. 110 - 4 Pint Jug, E Dresden**  
Listed As Dresden No. 56  
Also available as Adams No. 56



**No. 111 - 48 oz. Jug, Iron Mold**  
Also: No. 111 - 60 oz. Jug, Iron Mold  
Also No. 46 - Paste Mold version in 48 oz. & 64 oz. sizes



**No. 111 - 3 1/2 Pint Jug, Cut 4077**  
Available Needle Etching 272, Needle Etching 310, Needle Etching 319



**No. 119 - 83 oz. Jug, Ice Lipped, Optic**  
Also available 119/498 7-piece Ice Tea Set includes, No. 119 - 83 oz. Jug, Ice Lipped and 6 No. 498 - 12 oz. Tumblers  
Also available 119/7801 7-piece Ice Tea Set includes, No. 119 - 83 oz. Jug, Ice Lipped and 6 No. 7801 - 12 oz. Footed Tumblers  
Also available 119/7801 9-piece Ice Tea Set includes, No. 119 - 83 oz. Jug, Ice Lipped and 8 No. 7801 - 12 oz. Footed Tumblers  
Available E Rose Point, E773 Wildflower, E Blossom Time, E772 Chantilly, E762 Elaine



**No. 120 - 7" Candy Tray**  
Also made in 8" and 9" sizes  
Available Finished or Unfinished



**No. 129 - 5 oz. Blown Marmalade**  
Available with No. 142 - Marmalade Cover or 2369 - Marmalade Cover



**No. 130 - 8 1/2 oz. Blown Marmalade**  
Available with Chelsea 107 notched Cover



**No. 130 - 7" Candy Tray**  
Also No. 130 - 8" Candy Tray  
Available Finished or Unfinished



**No. 130 - 7" Square Candy Tray or Plate**  
**Original 1903-1905-1907 Number & Description Shown**  
Listed as No. 131 in later catalogs  
Available Finished or Unfinished



**No. 131 - 3 1/2 oz. Blown Marmalade**  
Also listed as: No. 131 - 3 1/2 oz. Blown Mustard



**No. 132 - 2 oz. Blown Marmalade**  
Also listed as: No. 132 - 2 oz. Blown Mustard  
Available with No. 144 - Marmalade Cover





**No. 135 - 1/2 oz. Toy Mug**  
Available with or without tin cap



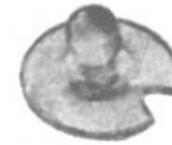
**No. 142 - 10 oz. Blown Marmalade**  
Available with No. 142 - Marmalade Cover or 2369 - Marmalade Cover



**No. 142 - Marmalade Cover**  
Fits 129, 142, 145, 146, 147, 148, 149, 152 Marmalades



**No. 143 - 3 oz. Blown Marmalade**  
Also listed as: No. 143 - 3 oz. Blown Mustard  
Available with No. 143 - Marmalade Cover



**No. 143 - Marmalade Cover**  
Fits No. 143 Marmalade/Mustard only



**No. 144 - 5 oz. Blown Marmalade**  
Also listed as: No. 144 - 5 oz. Blown Mustard  
Available with No. 144 - Marmalade Cover



**No. 144 - Marmalade Cover**  
Fits No. 132, 144 & 151 Marmalades/Mustards



**No. 145 - 7 oz. Blown Marmalade and Cover**  
Round Line  
Also available: 9 oz.  
Available with No. 142 - Marmalade Cover or 2369 - Marmalade Cover



**No. 145 - Marmalade and Cover, E Marjorie**  
Also available with Plate



**No. 145 - Marmalade and Cover, E Wedgewood**  
Listed as Wedgewood No. 21  
Available with Plate as Wedgewood No. 21 1/2  
aka P. E. 5



**No. 145 - Marmalade, Cover and 1917/102 Underplate, E Dresden**  
Listed as Dresden No. 21  
Also available as Adams No. 21  
No. 145 - Marmalade and Cover  
Listed as Dresden No. 21 1/2  
Also available as Adams No. 21 1/2



**No. 146 - 10 oz. Blown Marmalade**  
Available with No. 142 - Marmalade Cover or 2369 - Marmalade Cover



**No. 148 - 9 oz. Blown Marmalade**  
Available with No. 142 - Marmalade Cover or 2369 - Marmalade Cover



**No. 149 - 9 oz. Blown Marmalade**  
Available with No. 142 - Marmalade Cover or 2369 - Marmalade Cover



**No. 150 - 12 oz. Condiment or Candy Jar**  
Made only in 12 oz.



**No. 150 - 9 oz. Kitchen Tumbler, Ground Bottom**  
Originally Rochester No. 22 1/2



**No. 151 - 2 oz. Oil Bottle, Ground or Drop Stopper**



**No. 151 - 3 oz. Mustard and Cover**  
Round Line  
Also available: No. 151 - 4 1/2 oz. Mustard and Cover  
Available with No. 144 - Marmalade Cover  
Available E752 Diane, E754 Portia, E762 Elaine, E Blossom Time, E773 Wildflower



**No. 152 - 8 oz. Blown Marmalade**  
Available with No. 142 - Marmalade Cover or 2369 - Marmalade Cover



**No. 152 - Marmalade and Cover, E Wedgewood**  
Listed as Wedgewood No. 22  
Available with Plate as Wedgewood No. 22 1/2



**No. 153 - 4 oz. Blown Marmalade**

Also listed as: No. 153 - 4 oz. Blown Mustard  
Available with 2902 - Marmalade Cover



**No. 153 - 4 oz. Blown Mustard and Cover, E Dresden**

Listed as Dresden No. 29  
Also available as Adams No. 29



**No. 0168 - Salt Dip**

Available Cut Top & Bottom or Cut Top & Bottom, Cut Wreath Private Mold



**No. 200/1 - 10" Candlestick, Cut 4077**

Candlestick first sold as 2800/111 Community line with a different base  
Available Cut Top and Bottom



**No. 200/8 - 7 1/2" Candlestick, 2-handle**

Same as 2800/110 - 7 1/2" Candlestick  
Available Cut Top and Bottom



**No. 200/9 - 3" Candlestick**

Same as 2798 - 3" Birthday Candlestick  
Available Finished or Unfinished



**No. 200/10 - 5" Full Finish Candlestick**

Also No. 200/11 - 5" Candlestick, Unfinished Foot  
Same as 2630/75 - 5" Martha Washington Candlestick



**No. 200/12 - 7" Full Finish Candlestick**

Also No. 200/13 - 7" Candlestick, Unfinished Foot  
Made from same mold as 2657 - 7" Colonial Candlestick



**No. 200/14 - 6" Full Finish Candlestick**

Made from 2991 mold



**No. 200/15 - 7" Full Finish Candlestick**

Made from 2861 mold



**No. 200/16 - 6" Full Finish Candlestick**

Also No. 200/17 - 6" Candlestick, Unfinished Foot  
Same as 2862 - 6 1/4" Candlestick



**No. 200/18 - 7" Full Finish Candlestick**

Also No. 200/19 - 7" Candlestick, Unfinished Foot  
From 2862 - 7" Candlestick Available E510



**No. 200/30 - 8" Full Finish Candlestick**

Also No. 200/31 - 8" Candlestick, Unfinished Foot  
Made from same mold as 2630 - 6" Martha Washington Candlestick



**No. 200/32 - 6" Full Finish Candlestick**

Also No. 200/33 - 6" Candlestick, Unfinished Foot  
Made from same mold as 2630/75 - 6" Martha Washington Candlestick



**No. 200/34 - 9 1/2" Full Finish Crucifix Candlestick**

Same as No. 3 - 9" Crucifix Candlestick  
Available Opal



**No. 0214 - 7 oz. Tall Oil Bottle, Ground or Drop Stopper Light Blown**



**No. 0214 - 7 oz. Tall Oil Bottle**  
Listed as Wedgewood No. 20



**No. 220 - 2 1/2 oz. Tall Oil Bottle, Ground or Drop Stopper Light Blown**



**No. 221 - 2 1/2 oz. Tall Oil Bottle, Ground or Drop Stopper Light Blown**



**No. 269 - Footed Hand Lamp, A Size, #1 Riverside Collar, 4 1/2" Ht**

Also available: No. 269 - Flat Hand Lamp, 0 Size, #1 Riverside Collar

Search results - "feb22"

Main Menu

- Home
- Login

- Album list
- Search



**No. 269 - Stand Lamp, D Size, #2 Riverside Collar, 10" Ht**

Available types and sizes:

- 00 Size Stand Lamp, #1 Collar - 7½" Ht
- 0 Size Stand Lamp, #1 Collar - 7¾" Ht
- A Size Stand Lamp, #1 Collar - 8¼" Ht
- B Size Stand Lamp, #2 Collar - 8¾" Ht
- C Size Stand Lamp, #2 Collar - 9½" Ht
- C Size Sewing Lamp, #2 Collar - 8¾" Ht
- F Size Stand Lamp, #2 Collar - 10½" Ht
- D Size Stand Lamp, #2 Collar - 8¾" Ht



**No. 300 - 6 oz. Tall Champagne or Café Parfait**  
Touraine line



**No. 300 - 6 oz. Tall Champagne or Café Parfait, Needle Etching 288**  
Touraine line



**No. 300 - 4 oz. Claret**  
Touraine line



**No. 300 - 3 oz. Cocktail**  
Touraine line  
Available Needle Etching 288



**No. 300 - 1 oz. Cordial, Needle Etching 288**  
Touraine line  
4¼" Ht



**No. 300 - 1¾ oz. Crème de Menthe**  
Touraine line



**No. 300 - 4½ oz. Egg Cup**  
Touraine line



**No. 300 - 6½ oz. Ice Cream**  
Touraine line



**No. 300 - 1 oz. Pousse Café**  
Touraine line



**No. 300 - 4½ oz. Low Footed Sherbet, Optic**  
Touraine line



**No. 300 - 5 oz. Tall Footed Sherbet, Needle Etching 288**  
Touraine line



**No. 300 - 2½ oz. Wine**  
Touraine line



**No. 310 - 64 oz. Decanter, Iron Mold**  
Available Drop or Ground Stopper



**No. 312 - 16 oz. Decanter**  
Also available: No. 312 - 32 oz. Decanter  
Available Drop or Ground Stopper



**No. 360 - Stand Lamp - F Size, #2 Riverside Collar, 9¾" Ht**

Also Available:

- 00 Size Stand Lamp, #1 Collar - 7¾" Ht
- 0 Size Stand Lamp, #1 Collar - 7¾" Ht
- A Size Stand Lamp, #1 Collar - 8" Ht
- B Size Stand Lamp, #2 Collar - 8¾" Ht
- C Size Stand Lamp, #2 Collar - 8¾" Ht
- C Size Sewing Lamp, #2 Collar - 7¾" Ht
- D Size Stand Lamp, #2 Collar - 9" Ht



**No. 360 - Footed Hand Lamp, 0 Size, #1 Riverside Collar, 4½" Ht**



**No. 410 - 12 oz. Soda Tumbler, Plain**  
Also available:  
No. 410 - 13 oz. Lemonade Tumbler, Plain



**No. 413 - 13½-14 oz. Soda Tumbler**  
Also available:  
No. 413½ - 11 oz. Tumbler, Optic



**No. 417 - 14 oz. Taper Soda Tumbler, Plain**  
Also available - 14½ oz.  
Originally McKee No. 1286



No  
Image  
Available

**No. 417½ - 14 oz. Taper Soda  
Tumbler, Optic**  
Also available - 14½ oz.  
Originally McKee No. 1286



**No. 428 - 11½ oz. Heavy Taper  
Tumbler, Plain**  
Also available 12 oz. size  
Originally Rochester No. 290

No  
Image  
Available

**No. 428½ - 9 oz. Shammed Taper  
Tumbler, Optic**  
Also available:  
No. 428½ - 12 oz. Shammed Taper  
Tumbler, Optic  
Originally Rochester No. 290



**No. 0431 - 6½ oz. Tumbler**  
Also Available  
No. 0431 - 6 oz. Tumbler  
No. 0431 - 4½ oz. Tumbler  
No. 0431 - 4 oz. Tumbler



**No. 0431 - 8½ oz. Tumbler**  
Also Available:  
No. 0431 - 8 oz. Tumbler



**No. 445 - 12 oz. Colonial Ice Tea  
Tumbler**  
Polished Bottom



**No. 446 - 12 oz. Colonial Ice Tea  
Tumbler**  
Ground Bottom



**No. 448 - Stand Lamp, 00 Size, #1  
Riverside Collar, 7" Ht**



**No. 448 - Footed Hand Lamp, 0  
Size, #1 Riverside Collar, 4¾" Ht**  
Also Available:  
0 Size Flat Hand Lamp, #1 Collar - 2¾"  
Ht



**No. 448 - Stand Lamp, C Size, #2  
Riverside Collar, 9" Ht**  
Also Available:  
0 Size Stand Lamp - 7¼" Ht  
A Size Stand Lamp - 8" Ht  
B Size Stand Lamp - 8½" Ht  
D Size Stand Lamp - 9¾" Ht  
C Size Sewing Lamp - 7¾" Ht



**No. 453 - 13 oz. Pressed Handle  
Soda Tumbler**



**No. 495 - 11½ oz. Heavy Soda  
Fountain Tumbler, Belled, Plain**  
Fits standard holder  
Originally Rochester No. 953



**No. 495½ - 11½ oz. Belled Soda  
Fountain Tumbler, Optic**  
Fits standard holder  
Originally Rochester No. 953



**No. 496 - 8 oz. Mineral or Soda  
Fountain Tumbler, Belled, Plain**  
Fits standard holder  
Originally Rochester No. 953



**No. 496½ - 8 oz. Belled Soda  
Fountain Tumbler, Optic**  
Fits standard holder  
Originally Rochester No. 953



**No. 497 - Flat Hand Lamp, 0 Size,  
#1 Collar, 2¾" Ht**  
Also available:  
0 Size Footed Hand Lamp, No. 1 Collar  
A Size Flat Hand Lamp, No. 1 Collar -  
4½" Ht



**No. 497 - Stand Lamp, B Size, #2  
Riverside Collar, 9¾" Ht**  
Also Available:  
00 Size Stand Lamp, #1 Collar - 7½" Ht  
0 Size Stand Lamp, #1 Collar - 7¾" Ht  
A Size Stand Lamp, #1 Collar - 8½" Ht  
B Size Stand Lamp, #2 Collar - 9¾" Ht  
C Size Stand Lamp, #2 Collar - 9¾" Ht  
D Size Stand Lamp, #2 Collar - 10¾" Ht

No  
Image  
Available

**No. 497 - 10 oz. Plain Taper  
Tumbler, Heavy Bottom**  
Originally Rochester No. 302, U. S. No.  
1502



**No. 498 - 9 oz. Belled Soda  
Fountain Tumbler, Plain**  
Fits standard holder  
Originally Rochester No. 953



**No. 498½ - 9 oz. Belled Soda  
Fountain Tumbler, Optic**  
Fits standard holder  
Originally Rochester No. 953

Search results - "feb22"

Main Menu

- Home
- Login

- Album list
- Search



**No. 516 - Footed Hand Lamp, 0 Size, #1 Riverside Collar, 5" Ht**

Also Available:  
No. 516 - Flat Hand Lamp, 0 Size, #1 Riverside Collar



**No. 516 - Sewing Lamp, D Size, #2 Riverside Collar**

Also Available:  
00 Size Stand Lamp, #1 Collar - 7" Ht  
0 Size Stand Lamp, #1 Collar - 7½" Ht  
A Size Stand Lamp, #1 Collar - 8¾" Ht  
B Size Stand Lamp, #2 Collar - 9" Ht  
C Size Stand Lamp, #2 Collar - 9¾" Ht  
C Size Sewing Lamp, #2 Collar - 8¾" Ht  
D Size Stand Lamp, #2 Collar - 10½" Ht



**No. 536½ - 5 oz. Sham Tumbler**  
Available Plain, Gold Edge, Shammed



**No. 536½ - 12 oz. Sham Tumbler**  
Available Plain, Gold Edge, Shammed



**No. 536½ - 18 oz. Sham Tumbler, Gold Edge**  
Available Plain, Gold Edge, Shammed



**No. 536½ - 20 oz. Sham Tumbler, Gold Edge**  
Available Plain, Gold Edge, Shammed



**No. 536 - 1½ oz. Tumbler, Gold Edge**  
Available Plain, Gold Edge, Shammed



**No. 536 - 1 oz. Tumbler, Gold Edge**  
Available Plain, Gold Edge, Shammed



**No. 536 - 5 oz. Tumbler, Gold Edge**  
Also Available:  
No. 536 - 2 oz. Tumbler  
No. 536 - 3 oz. Tumbler  
No. 536 - 4 oz. Tumbler  
All tumblers available Plain, Gold Edge, Shammed



**No. 536 - 6 oz. Tumbler, Gold Edge**  
Available Plain, Gold Edge, Shammed



**No. 536 - 8 oz. Tumbler, Gold Edge**  
Available Plain, Gold Edge, Shammed



**No. 536 - 10 oz. Tumbler, Gold Edge**  
Available Plain, Gold Edge, Shammed



**No. 536 - 12 oz. Tumbler, Gold Edge**  
Available Plain, Gold Edge, Shammed



**No. 536 - 14 oz. Tumbler, Gold Edge**  
Available Plain, Gold Edge, Shammed



**No. 536 - 16 oz. Tumbler, Gold Edge**  
Available Plain, Gold Edge, Shammed



**No. 536 - 18 oz. Tumbler, Gold Edge**  
Available Plain, Gold Edge, Shammed



**No. 536 - 20 oz. Tumbler, Gold Edge**  
Available Plain, Gold Edge, Shammed



**No. 687 - Sugar Shaker**  
Available No Top; or No Top, Cut Top and Bottom



**1010 - Heavy Blown Restaurant Shaker with Glass Top, Heavy Cast Nickel Ring**  
Available Tops: No Top, #1 Spun Nickel, #3 Heavy Cast Nickel, #6 Celluloid Disc and Spun Nickel Ring, #8 Flat Glass Disc and Cast Nickel Ring, #10 Flat Glass Disc and Cast Nickel Ring, #15 Aluminum Plated Dome, #16 Aluminum Plated



**1011 - Heavy Blown Shaker with #3 Heavy Cast Nickel Top**  
Available Tops: #1 Spun Nickel, #3 Heavy Cast Nickel, #5 Heavy Silver Plated, #6 Celluloid Disc and Spun Nickel Ring, #8 Flat Glass Disc and Cast Nickel Ring, #10 Flat Glass Disc and Cast Nickel Ring, #11 Aluminum and Pearl Center, #15 Aluminum Plated Dome, #16 Aluminum Plated

Search results - "feb22"

Main Menu

- Home
- Login

- Album list
- Search



**1012 - Shaker, Heavy Cast Nickel Top**  
 Available Tops: No Top, #1 Spun Nickel, #3 Heavy Cast Nickel, #6 Celluloid Disc and Spun Nickel Ring, #8 Flat Glass Disc and Cast Nickel Ring, #10 Flat Glass Disc and Cast Nickel Ring, #15 Aluminum Plated Dome, #16 Aluminum Plated



**1013 - Shaker, Heavy Cast Nickel Top**  
 Available Tops: No Top, #1 Spun Nickel, #3 Heavy Cast Nickel, #6 Celluloid Disc and Spun Nickel Ring, #8 Flat Glass Disc and Cast Nickel Ring, #10 Flat Glass Disc and Cast Nickel Ring, #15 Aluminum Plated Dome, #16 Aluminum Plated



**1014 - Heavy Blown Shaker, Glass Heavy Cast Nickel Ring**  
 Available Tops: No Top, #1 Spun Nickel, #3 Heavy Cast Nickel, #6 Celluloid Disc and Spun Nickel Ring, #8 Flat Glass Disc and Cast Nickel Ring, #10 Flat Glass Disc and Cast Nickel Ring, #15 Aluminum Plated Dome, #16 Aluminum Plated



**1015 - Extra Heavy Blown Shaker with Glass Top, Heavy Cast Nickel Ring**  
 Available Tops: No Top, #1 Spun Nickel, #3 Heavy Cast Nickel, #6 Celluloid Disc and Spun Nickel Ring, #8 Flat Glass Disc and Cast Nickel Ring, #10 Flat Glass Disc and Cast Nickel Ring, #15 Aluminum Plated Dome, #16 Aluminum Plated



**1019 - Shaker**  
 Available Tops: No Top, #3 Heavy Cast Nickel, #5 Heavy Silver Plated, #11 Aluminum and Pearl Center, #14 Non-Corrosive Dome  
 Available Plain, or Cut Top & Bottom



**1020 - Shaker**  
 Available Tops: #1 Spun Nickel, #3 Heavy Cast Nickel, #5 Heavy Silver Plated, #6 Celluloid Disc and Spun Nickel Ring, #8 Flat Glass Disc and Cast Nickel Ring, #10 Flat Glass Disc and Cast Nickel Ring, #11 Aluminum and Pearl Center, #15 Aluminum Plated Dome, #16 Aluminum Plated



**1021 - Shaker**  
 Available Tops: #3 Heavy Cast Nickel, #5 Heavy Silver Plated, #6 Celluloid Disc and Spun Nickel Ring, #8 Flat Glass Disc and Cast Nickel Ring, #10 Flat Glass Disc and Cast Nickel Ring, #11 Aluminum and Pearl Center, #15 Aluminum Plated Dome, #16 Aluminum Plated



**1023 - Shaker**  
 Available Tops: No Top, #3 Heavy Cast Nickel, #4 Cone Non-Corrosive, #5 Heavy Silver Plated, #11 Aluminum and Pearl Center, #14 Non-Corrosive Dome, #16 Aluminum Plated Dome, #17 All Glass, #18 Cast Nickel Pourer, #19 Pyramid Silver Plated



**1025 - Large Shaker**  
 Available Tops: No Top, #12 Spun Nickel Agitator



**1025 - Medium Shaker**  
 Available Tops: No Top, #12 Spun Nickel Agitator



**1026 - Shaker**  
 Available Tops: #3 Heavy Cast Nickel, #5 Heavy Silver Plated, #6 Celluloid Disc and Spun Nickel Ring, #8 Flat Glass Disc and Cast Nickel Ring, #10 Flat Glass Disc and Cast Nickel Ring, #11 Aluminum and Pearl Center, #15 Aluminum Plated Dome, #16 Aluminum Plated



**1027 - Shaker**  
 Available Tops: #3 Heavy Cast Nickel, #5 Heavy Silver Plated, #6 Celluloid Disc and Spun Nickel Ring, #8 Flat Glass Disc and Cast Nickel Ring, #10 Flat Glass Disc and Cast Nickel Ring, #11 Aluminum and Pearl Center, #15 Aluminum Plated Dome, #16 Aluminum Plated



**1030 - Shaker**  
 Available Tops: No Top, #3 Heavy Cast Nickel, #4 Cone Non-Corrosive, #5 Heavy Silver Plated, #11 Aluminum and Pearl Center, #14 Non-Corrosive Dome, #16 Aluminum Plated Dome, #17 All Glass, #18 Cast Nickel Pourer, #19 Pyramid Silver Plated  
 Available Plain, or Cut Top & Bottom



**1031 - Shaker**  
 Available Tops: No Top, #3 Heavy Cast Nickel, #4 Cone Non-Corrosive, #5 Heavy Silver Plated, #11 Aluminum and Pearl Center, #14 Non-Corrosive Dome, #16 Aluminum Plated Dome, #17 All Glass, #18 Cast Nickel Pourer, #19 Pyramid Silver Plated  
 Available Plain, or Cut Top & Bottom



**1032 - Shaker**  
 Available Tops: No Top, #3 Heavy Cast Nickel, #4 Cone Non-Corrosive, #5 Heavy Silver Plated, #11 Aluminum and Pearl Center, #14 Non-Corrosive Dome, #16 Aluminum Plated Dome, #17 All Glass, #18 Cast Nickel Pourer, #19 Pyramid Silver Plated  
 Available Plain, or Cut Top & Bottom



**1033 - Shaker**  
 Available Tops: No Top, #3 Heavy Cast Nickel, #4 Cone Non-Corrosive, #5 Heavy Silver Plated, #11 Aluminum and Pearl Center, #14 Non-Corrosive Dome, #16 Aluminum Plated Dome, #17 All Glass, #18 Cast Nickel Pourer, #19 Pyramid Silver Plated  
 Available Plain, or Cut Top & Bottom



**1034 - Shaker**  
 Available Tops: No Top, #3 Heavy Cast Nickel, #4 Cone Non-Corrosive, #5 Heavy Silver Plated, #11 Aluminum and Pearl Center, #14 Non-Corrosive Dome, #16 Aluminum Plated Dome, #17 All Glass, #18 Cast Nickel Pourer, #19 Pyramid Silver Plated  
 Available Plain, or Cut Top & Bottom



**1036 - Shaker**  
 Available Tops: No Top, #3 Heavy Cast Nickel, #4 Cone Non-Corrosive, #5 Heavy Silver Plated, #11 Aluminum and Pearl Center, #14 Non-Corrosive Dome, #16 Aluminum Plated Dome, #17 All Glass, #18 Cast Nickel Pourer, #19 Pyramid Silver Plated  
 Available Plain, or Cut Top & Bottom



**1037 - Shaker**  
 Available Tops: #3 Heavy Cast Nickel, #5 Heavy Silver Plated, #6 Celluloid Disc and Spun Nickel Ring, #8 Flat Glass Disc and Cast Nickel Ring, #10 Flat Glass Disc and Cast Nickel Ring, #11 Aluminum and Pearl Center, #15 Aluminum Plated Dome, #16 Aluminum Plated



**1038 - Shaker**  
 Available Tops: #3 Heavy Cast Nickel, #5 Heavy Silver Plated, #6 Celluloid Disc and Spun Nickel Ring, #8 Flat Glass Disc and Cast Nickel Ring, #10 Flat Glass Disc and Cast Nickel Ring, #11 Aluminum and Pearl Center, #15 Aluminum Plated Dome, #16 Aluminum Plated



**1039 - Shaker**

Available Tops: #3 Heavy Cast Nickel, #5 Heavy Silver Plated, #6 Celluloid Disc and Spun Nickel Ring, #8 Flat Glass Disc and Cast Nickel Ring, #10 Flat Glass Disc and Cast Nickel Ring, #11 Aluminum and Pearl Center, #15 Aluminum Plated Dome, #16 Aluminum Plated



**1125 - 9 oz. Bitter Bottle**

Sold with short tube, long tube or no tube  
 Sold plain or engraved



**1150 - Shaker**

Available Tops: No Top, #3 Heavy Cast Nickel, #4 Cone Non-Corrosive, #5 Heavy Silver Plated, #11 Aluminum and Pearl Center, #14 Non-Corrosive Dome, #16 Aluminum Plated Dome, #17 All Glass, #18 Cast Nickel Pourer, #19 Pyramid Silver Plated  
 Available Plain, or Cut Top & Bottom



**1153 - Shaker, U. S. Navy**

Available Tops: #1 Spun Nickel, #3 Heavy Cast Nickel, #5 Heavy Silver Plated, #6 Celluloid Disc and Spun Nickel Ring, #8 Flat Glass Disc and Cast Nickel Ring, #10 Flat Glass Disc and Cast Nickel Ring, #11 Aluminum and Pearl Center, #15 Aluminum Plated Dome, #16 Aluminum Plated



**1154 - Shaker**

Available Tops: #1 Spun Nickel, #3 Heavy Cast Nickel, #5 Heavy Silver Plated, #6 Celluloid Disc and Spun Nickel Ring, #8 Flat Glass Disc and Cast Nickel Ring, #10 Flat Glass Disc and Cast Nickel Ring, #11 Aluminum and Pearl Center, #15 Aluminum Plated Dome, #16 Aluminum Plated



**1155 - Shaker**

Available No Top, Etched Flowers, Cut Flute; or #14 Top, Etched Flowers, Cut Flute



**1155 - Shaker, No Top, Cut Flute, Etched Flowers**

Available No Top, Etched Flowers, Cut Flute; or #14 Top, Etched Flowers, Cut Flute



**1156 - Shaker**

Available No Top, Etched Flowers, Cut Flute; or #11 Top, Etched Flowers, Cut Flute



**1161 - Shaker**

Available Tops: No Top, #3 Heavy Cast Nickel, #5 Heavy Silver Plated, #11 Aluminum and Pearl Center, #14 Non-Corrosive Dome  
 Available Plain, or Cut Top & Bottom



**1167 - Shaker**

Available Tops: #3 Heavy Cast Nickel, #5 Heavy Silver Plated, #6 Celluloid Disc and Spun Nickel Ring, #8 Flat Glass Disc and Cast Nickel Ring, #10 Flat Glass Disc and Cast Nickel Ring, #11 Aluminum and Pearl Center, #15 Aluminum Plated Dome, #16 Aluminum Plated



**1168 - Shaker**

Available Tops: #1 Spun Nickel, #3 Heavy Cast Nickel, #5 Heavy Silver Plated, #6 Celluloid Disc and Spun Nickel Ring, #8 Flat Glass Disc and Cast Nickel Ring, #10 Flat Glass Disc and Cast Nickel Ring, #11 Aluminum and Pearl Center, #15 Aluminum Plated Dome, #16 Aluminum Plated



**1170 - Shaker**

Available Tops: No Top, #3 Heavy Cast Nickel, #4 Cone Non-Corrosive, #5 Heavy Silver Plated, #11 Aluminum and Pearl Center, #14 Non-Corrosive Dome, #16 Aluminum Plated Dome, #17 All Glass, #18 Cast Nickel Pourer, #19 Pyramid Silver Plated  
 Available Cut Flute



**1171 - Shaker**

Available Tops: No Top, #3 Heavy Cast Nickel, #4 Cone Non-Corrosive, #5 Heavy Silver Plated, #11 Aluminum and Pearl Center, #14 Non-Corrosive Dome, #16 Aluminum Plated Dome, #17 All Glass, #18 Cast Nickel Pourer, #19 Pyramid Silver Plated  
 Available Plain, or Cut Top & Bottom



**1172 - Shaker**

Available Tops: No Top, #3 Heavy Cast Nickel, #4 Cone Non-Corrosive, #5 Heavy Silver Plated, #11 Aluminum and Pearl Center, #14 Non-Corrosive Dome, #16 Aluminum Plated Dome, #17 All Glass, #18 Cast Nickel Pourer, #19 Pyramid Silver Plated  
 Available Cut Flute



**1173 - Shaker**

Available Tops: #3 Heavy Cast Nickel, #5 Heavy Silver Plated, #6 Celluloid Disc and Spun Nickel Ring, #8 Flat Glass Disc and Cast Nickel Ring, #10 Flat Glass Disc and Cast Nickel Ring, #11 Aluminum and Pearl Center, #15 Aluminum Plated Dome, #16 Aluminum Plated



**1175 - Shaker**

Available Tops: No Top, #3 Heavy Cast Nickel, #4 Cone Non-Corrosive, #5 Heavy Silver Plated, #11 Aluminum and Pearl Center, #14 Non-Corrosive Dome, #16 Aluminum Plated Dome, #17 All Glass, #18 Cast Nickel Pourer, #19 Pyramid Silver Plated  
 Available Plain, or Cut Top & Bottom



**1176 - Shaker**

Available Tops: No Top, #3 Heavy Cast Nickel, #4 Cone Non-Corrosive, #5 Heavy Silver Plated, #11 Aluminum and Pearl Center, #14 Non-Corrosive Dome, #16 Aluminum Plated Dome, #17 All Glass, #18 Cast Nickel Pourer, #19 Pyramid Silver Plated  
 Available Plain, or Cut Top & Bottom



**1177 - Salt or Pepper Shaker with Plastic Top**

Available Tops: No Top, #3 Heavy Cast Nickel, #4 Cone Non-Corrosive, #5 Heavy Silver Plated, #11 Aluminum and Pearl Center, #14 Non-Corrosive Dome, #16 Aluminum Plated Dome, #17 All Glass, #18 Cast Nickel Pourer, #19 Pyramid Silver Plated  
 Available Plain, or Cut Top & Bottom



**1180 - Shaker, Blank**

Available Tops: No Top, #3 Heavy Cast Nickel, #4 Cone Non-Corrosive, #5 Heavy Silver Plated, #11 Aluminum and Pearl Center, #14 Non-Corrosive Dome, #16 Aluminum Plated Dome, #17 All Glass, #18 Cast Nickel Pourer, #19 Pyramid Silver Plated  
 Available Blank, Cut 3080, Cut Flute



**1181 - Sugar Shaker**

Available No Top; or No Top, Cut Top and Bottom

Search results - "feb22"

- Home
- Login
- Album list
- Search



**1187 - Salt Dip**

Available Cut Bottom or Cut Bottom, Cut Flowers on Bottom



**1188 - Salt Dip**

Available Cut Bottom; or Cut Bottom, Cut Wreath



**1190 - Shaker**

Available Tops: No Top, #3 Heavy Cast Nickel, #4 Cone Non-Corrosive, #5 Heavy Silver Plated, #11 Aluminum and Pearl Center, #14 Non-Corrosive Dome, #16 Aluminum Plated Dome, #17 All Glass, #18 Cast Nickel Pourer, #19 Pyramid Silver Plated  
Available Cut Flute



**1193 - Salt Dip**

Available Cut Bottom; or Cut Bottom, Cut Flower



**1200 - Shaker**

Available Tops: No Top, #3 Heavy Cast Nickel, #4 Cone Non-Corrosive, #5 Heavy Silver Plated, #11 Aluminum and Pearl Center, #14 Non-Corrosive Dome, #16 Aluminum Plated Dome, #17 All Glass, #18 Cast Nickel Pourer, #19 Pyramid Silver Plated  
Available Cut Flute



**1201 - Salt Dip**

Available Cut Bottom; or Cut Bottom, Cut Flower; or Cut Bottom, Cut Flower, Cut Flute



**1202 - Salt Dip**

Available Cut Bottom; or Cut Bottom, Cut Flower



**1203 - Individual Salt or Pepper Shaker, Uncut**

Available Tops: No Top, #11 Aluminum and Pearl Center, #14 Non-Corrosive Dome  
Available Plain; or Cut Top & Bottom



**1204 - Individual Salt or Pepper Shaker, Plain**

Available Tops: No Top, #11 Aluminum and Pearl Center, #14 Non-Corrosive Dome  
Available Plain; or Cut Top & Bottom



**1212 - Shaker**

Available:  
No Top, Cut Top & Bottom  
or No Top, Cut Top & Bottom, Cut Flower  
or No Top, Cut Flute, Cut Flower  
or #11 Top, Cut Top & Bottom  
or #11 Top, Cut Top & Bottom Cut Flower  
or #11 Top, Cut Flower, Cut Flute



**1213 - Shaker**

Available No Top, Cut Top & Bottom; or No Top, Cut Top & Bottom, Cut Flower; or No Top, Cut Flute, Cut Flower; or #14 Top, Cut Top & Bottom; or #14 Top, Cut Top & Bottom, Cut Flower; or #14 Top, Cut Flower, Cut Flute



**1220 - Individual Shaker, Glass Top**

Available Tops: No Top, #11 Aluminum and Pearl Center, #14 Non-Corrosive Dome  
Available Plain; or Cut Top & Bottom, or Cut 3080



**1221 - Individual Shaker**

Available Tops: No Top, #3 Heavy Cast Nickel, #4 Cone Non-Corrosive, #5 Heavy Silver Plated, #11 Aluminum and Pearl Center, #14 Non-Corrosive Dome, #16 Aluminum Plated Dome, #17 All Glass, #18 Cast Nickel Pourer, #19 Pyramid Silver Plated  
Available Cut Flute



**1222 - Shaker, Plain**

Available Tops: No Top, #3 Heavy Cast Nickel, #4 Cone Non-Corrosive, #5 Heavy Silver Plated, #11 Aluminum and Pearl Center, #14 Non-Corrosive Dome, #16 Aluminum Plated Dome, #17 All Glass, #18 Cast Nickel Pourer, #19 Pyramid Silver Plated  
Available Cut Flute, Cut 3080



**1229 - Kitchen Salt**

Available Tops: No Top, #1 Spun Nickel, #2 Spike Cast Nickel, #11 Aluminum and Pearl Center



**1230 - Shaker**

Available Tops: No Top, #3 Heavy Cast Nickel, #4 Cone Non-Corrosive, #5 Heavy Silver Plated, #11 Aluminum and Pearl Center, #14 Non-Corrosive Dome, #16 Aluminum Plated Dome, #17 All Glass, #18 Cast Nickel Pourer, #19 Pyramid Silver Plated  
Available Plain, or Cut Top & Bottom



**1231 - Shaker**

Available Tops: No Top, #3 Heavy Cast Nickel, #4 Cone Non-Corrosive, #5 Heavy Silver Plated, #11 Aluminum and Pearl Center, #14 Non-Corrosive Dome, #16 Aluminum Plated Dome, #17 All Glass, #18 Cast Nickel Pourer, #19 Pyramid Silver Plated  
Available Plain, or Cut Top & Bottom



**1234 - Shaker**

Available Tops: No Top, #3 Heavy Cast Nickel, #4 Cone Non-Corrosive, #5 Heavy Silver Plated, #11 Aluminum and Pearl Center, #14 Non-Corrosive Dome, #16 Aluminum Plated Dome, #17 All Glass, #18 Cast Nickel Pourer, #19 Pyramid Silver Plated  
Available Plain, or Cut Top & Bottom



**1235 - Shaker**

Available Tops: No Top, #3 Heavy Cast Nickel, #4 Cone Non-Corrosive, #5 Heavy Silver Plated, #11 Aluminum and Pearl Center, #14 Non-Corrosive Dome, #16 Aluminum Plated Dome, #17 All Glass, #18 Cast Nickel Pourer, #19 Pyramid Silver Plated  
Available Cut Flute, Cut 3080



**1236 - Shaker**

Available Tops: No Top, #3 Heavy Cast Nickel, #5 Heavy Silver Plated, #11 Aluminum and Pearl Center, #14 Non-Corrosive Dome  
Available Plain, or Cut Top & Bottom



Search results - "feb22"

Main Menu

- [Home](#)
- [Login](#)

- [Album list](#)
- [Search](#)



**1237 - Sugar Shaker**

Available No Top; or No Top, Cut Top and Bottom  
Same as 1238 Sugar Shaker, Star Bottom



**1238 Sugar Shaker, Star Bottom**

Available No Top; or No Top, Cut Top and Bottom  
Same as 1237 - Sugar Shaker with Star Bottom



**1239 - Salt Dip**

Available Cut Bottom; or Cut Bottom, Cut Wreath on Rim



**1250 - 45 oz. Water Bottle, Iron Mold, Optic**

Available plain, no Optic



**1251 - 44 oz. Water Bottle, Plain, Iron Mold**

Available Optic



**1402/133 - 4-piece Twin Salad Dressing Set**

Includes 1402/133 - 5½" Twin Salad Dressing Bowl, 1402/134 - plate and 2 ladles

Also sold as 1402/133 - 3-piece Twin Salad Dressing Set 5½" Twin Salad Dressing Bowl and 2 ladles

Also sold as 1402/133 - 5½" Twin Salad Dressing Bowl only

Available E752 Diane, E754 Portia, E Candlelight, E773 Wildflower, D/1046 Gold Bands, D/1049 Gold Encrusted Bordero Wide Band



**1402/174 - 9 oz. Squat Sanitary Syrup with Chrome Plated Slip-on Top on No. 605 - 5" Plate**



**1572 - 7 oz. Tumbler, Medium Sham**

Also Available:  
1572 - 9 oz. Tumbler, Medium Sham  
1572 - 12 oz. Tumbler, Medium Sham



**1630 - 3½ oz. Tumbler, E514/515**  
Available Needle Etching 322, Needle Etching 317



**1630 - 5 oz. Tumbler**  
Available Plain or Optic  
Available D/145 Gold Encrusted Minton Border  
Available as 1630 - 5 oz. Tumbler, E Wedgewood, listed as Wedgewood No. 67  
¾" Ht



**1630 - 5 oz. Tumbler, E514/515**  
Available Needle Etching 322, Needle Etching 317



**1630 - 5 oz. Tumbler, E Adams (Crystal)**  
Listed as Adams No. 67  
Also available as Dresden No. 67



**1630 - 10 oz. Table Tumbler**  
3020 line accessory  
Available D/145 Gold Encrusted Minton Border



**1630 - 10 oz. Table Tumbler, E514/515**  
Available Needle Etching 322, Needle Etching 317



**1630 - 10 oz. Tall Tumbler**  
Available as 1630 - 10 oz. Tall Tumbler, E Wedgewood, listed as Wedgewood No. 69



**1630 - 10 oz. Tall Tumbler, E514/515**  
Also available as Dresden No. 69½  
Available Needle Etching 322, Needle Etching 317



**1630 - 12 oz. Tumbler**  
Available Plain or Optic  
Available Crackle  
Available D/145 Gold Encrusted Minton Border, E514/515  
1630 - 12 oz. Tumbler, E Wedgewood, listed as Wedgewood No. 66



**1630 - 12 oz. Tumbler, E408**  
Available Needle Etching 272, Needle Etching 310, Needle Etching 317, Needle Etching 322



**1630 - 12 oz. Ice Tea Tumbler, 1-handle**  
3020 line accessory



**1630 - 12 oz. Tumbler, E Adams (Crystal)®**  
Listed as Adams No. 66

Search results - "feb22"

Main Menu

- [Home](#)
- [Login](#)

- [Album list](#)
- [Search](#)



**1917/1 - Butter and Cover, Star Bottom**

Available as 4-piece Set; Butter, Sugar, Cream and Spoon



**1917/1 - Cream, Star Bottom**

Available as 4-piece Set; Butter, Sugar, Cream and Spoon



**1917/1 - Spoon, Star Bottom**

Available as 4-piece Set; Butter, Sugar, Cream and Spoon



**1917/1 - Sugar and Cover, Star Bottom**

Available as 4-piece Set; Butter, Sugar, Cream and Spoon



**1917/2 - Butter and Cover, Star Bottom**

Available as 4-piece Set; Butter, Sugar, Cream and Spoon



**1917/2 - Cream, Star Bottom**

Available as 4-piece Set; Butter, Sugar, Cream and Spoon



**1917/2 - Spoon, Star Bottom**

Available as 4-piece Set; Butter, Sugar, Cream and Spoon



**1917/2 - Sugar and Cover, Star Bottom**

Available as 4-piece Set; Butter, Sugar, Cream and Spoon



**1917/4 - Butter and Cover, Star Bottom**

Available Cut Bottom



**1917/7 - Butter Tub and Cover, Star Bottom**

Available Cut Bottom



**1917/8 - 6½" Butter Tub and Cover, Star Bottom**

Available Cut Bottom



**1917/13 - 12 oz. Sugar**

Available Cut Bottom



**1917/13 - 9 oz. Cream**

Available Cut Bottom



**1917/14 - 6 oz. Cream, Star Bottom**



**1917/14 - 6 oz. Sugar, Star Bottom**



**1917/15 - 4 oz. Cream**

Available Cut Bottom



**1917/15 - 5 oz. Sugar**

Available Cut Bottom



**1917/16 - 12 oz. Sugar, Star Bottom**

Available Cut Bottom



**1917/16 - 12 oz. Sugar, Star Bottom, Cut 4077**

Available Cut Bottom



**1917/16 - 12 oz. Sugar, Star Bottom, E Wedgewood**

Available Cut Bottom  
Listed as Wedgewood No. 6

Search results - "feb22"

Main Menu

- [Home](#)
- [Login](#)

- [Album list](#)
- [Search](#)



1917/16 - 8½ oz. Cream, Star Bottom  
Available Cut Bottom



1917/16 - 8½ oz. Cream, Star Bottom, Cut 4077  
Available Cut Bottom



1917/16 - 8½ oz. Cream, Star Bottom, E Wedgwood  
Available Cut Bottom  
Listed as Wedgwood No. 6



1917/17 - 4 oz. Cream  
Available Cut Bottom



1917/17 - 5 oz. Sugar  
Available Cut Bottom



1917/18 - 5½ oz. Cream, Optic, Star Bottom  
Available Cut Bottom



1917/18 - 5½ oz. Cream, Optic, Star Bottom, Cut 4097  
Available Cut Bottom



1917/18 - 5½ oz. Cream, Optic, Star Bottom, E Adams  
Available Cut Bottom  
Listed as Adams No. 5



1917/18 - 5½ oz. Cream, Optic, Star Bottom, E Marjorie  
Available Cut Bottom



1917/18 - 5½ oz. Cream, Optic, Star Bottom, E Wedgwood  
Available Cut Bottom  
Listed as Wedgwood No. 5  
3¼" Ht



1917/18 - 7 oz. Sugar, Optic, Star Bottom, Cut 4097  
Available Cut Bottom



1917/18 - 7 oz. Sugar, Optic, Star Bottom  
Available Cut Bottom



1917/18 - 7 oz. Sugar, Optic, Star Bottom, E Adams  
Available Cut Bottom  
Listed as Adams No. 5



1917/18 - 7 oz. Sugar, Optic, Star Bottom, E Marjorie  
Available Cut Bottom



1917/18 - 7 oz. Sugar, Optic, Star Bottom, E Wedgwood  
Available Cut Bottom  
Listed as Wedgwood No. 5



1917/19 - 5 oz. Cream, Star Bottom



1917/19 - 5 oz. Sugar, Star Bottom



1917/20 - 6 oz. Footed Cream



1917/20 - 6 oz. Footed Cream, E Dresden  
Listed as Dresden No. 4  
Also available as Adams No. 4



1917/20 - 6 oz. Footed Sugar, E Dresden  
Listed as Dresden No. 4  
Also available as Adams No. 4

Search results - "feb22"

Main Menu

- [Home](#)
- [Login](#)

- [Album list](#)
- [Search](#)



**1917/22 - Sugar Tub, Star Bottom**  
Available Cut Bottom



**1917/23 - Sugar Tub and Cover, Star Bottom**  
Available Cut Bottom



**1917/24 - Individual Cream, Star Bottom**



**1917/27 - Ash Tray with Match Box Holder, Star Bottom**



**1917/28 - Ash Tray with Match Box Holder, Star Bottom**



**1917/29 - Ash Tray with Match Box Holder, Star Bottom**



**1917/30 - Ash Tray, Star Bottom**



**1917/31 - Ash Tray, Star Bottom**



**1917/32 - Ash Tray, Star Bottom**



**1917/34 - 6" Baked Apple, Optic**  
Available Cut Bottom



**1917/34 - 12" Baked Apple, Optic**  
Available Cut Bottom



**1917/39 - 6½" Bath Powder Box and Cover, Star Bottom**  
Also made in 7½" and 8½" sizes



**1917/40 - 3" Puff Box or Bath Powder Box and Cover, Star Bottom**  
Available Cut Bottom  
Also made in 4", 5", 6", 7" and 8" sizes



**1917/40 - 4" Bath Powder Box and Cover, Star Bottom, E Wedgewood**  
Listed as Wedgewood No. 9  
Also:  
1917/40 - 5" Bath Powder Box and Cover, Star Bottom, E Wedgewood, Listed as Wedgewood No. 10



**1917/40 - 6" Bath Powder Box and Cover, Star Bottom, E Wedgewood**  
Listed as Wedgewood No. 11  
Also:  
1917/40 - 7" Bath Powder Box and Cover, Star Bottom, E Wedgewood, Listed as Wedgewood No. 12  
1917/40 - 8" Bath Powder Box and Cover, Star Bottom, E Wedgewood, Listed as Wedgewood No. 13



**1917/41 - 5" Oval Basket, Optic, Star Bottom, 6½" Ht**



**1917/42 - 5½" Oval Basket, Star Bottom, 8½" Ht**



**1917/48 - 3" Bonbon, Star Bottom**  
Also made in 4", 5", 6", 7" and 8" sizes  
Available Cut Bottom



**1917/58 - 7" Low Footed Bowl**  
Also made in 8" size



**1917/68 - 2½ oz. Mustard**  
Available with 2902 - Marmalade Cover



Search results - "feb22"

Main Menu

- [Home](#)
- [Login](#)

- [Album list](#)
- [Search](#)



1917/73 - 9" Cake Plate, Star Bottom, Plain Handle



1917/74 - 9 1/2" Tray or Cake or Cheese Plate, Star Bottom  
Will accept 1917/74 - 9" Cake or Cheese Plate Cover



1917/77 - 1 Pound Washington Candy Box, Gold Encrusted Wedgwood (Crystal)  
Listed as Wedgwood No. 76



1917/77 - 1 Pound Washington Candy Box, E Adams  
Listed as Adams No. 76 - 1 Pound Washington Candy Box  
Also Adams No. 77 - 2 Pound Washington Candy Box



1917/78 - 6" 3-compartment Candy Box, Star Bottom  
Also Available:  
1917/78 - 6" no-compartment Candy Box, Star Bottom  
1917/78 - 5" 3 -compartment Candy Box, Star Bottom  
1917/78 - 5" no-compartment Candy Box, Star Bottom  
Available Cut Bottom



1917/79 - 2 Pound Candy Box and Cover, Star Bottom



1917/80 - 2 Pound Candy Box and Cover



1917/85 - 1/2 Pound Candy Jar and Cover



1917/86 - 1 Pound Candy Jar and Cover  
9" Ht



1917/87 - 1/2 Pound Candy Jar, Plain  
Available as 1917/87 - 1/2 Pound Candy Jar, E Wedgwood, listed as Wedgwood No. 100



1917/92 - 6 1/2" 3-toed Card Tray, Optic, R. C. Eng. 479



1917/92 - 6 1/2" 3-toed Card Tray, Optic



1917/92 - 6 1/2" 3-toed Card Tray, Optic, E Adams  
Listed as Adams No. 70



1917/92 - 6 1/2" 3-toed Card Tray, Optic, E Wedgwood  
Listed as Wedgwood No. 70



1917/96 - Celery Dip and Plate  
Includes: 1917/96 - Celery Dip and 1917 - Plate  
Available Cut Bottom



1917/99 - 12" Celery Tray  
Available Cut Bottom



1917/102 - Cheese and Cover



1917/102 - 8 oz. Marmalade and Style 1 Cover  
Cover is 1917/102 - Notched Cover



1917/102 - Marmalade and Style 2 Cover, E Adams  
Listed as Adams No. 28  
With Plate Listed as Adams No. 28 1/2



1917/102 - Marmalade and Style 2 Cover, E Wedgwood  
Listed as Wedgwood No. 28



Search results - "feb22"

Main Menu

- [Home](#)
- [Login](#)

- [Album list](#)
- [Search](#)



**1917/105 - 10" Cheese and Cracker, Star Bottom**

Also available 1917/105 - 9½" Cheese and Cracker, Star Bottom  
Available Cut Bottom



**1917/105 - 10" Cheese and Cracker, E Dresden**

Listed as Dresden No. 3  
Also available as Adams No. 3



**1917/106 - 10" Cheese and Cracker, Plain Bottom**

Also available 1917/106 - 9½" Cheese and Cracker, Plain Bottom  
Available Cut Bottom



**1917/107 - 6¼" x 3¾" Cigarette Box and Cover, Star Bottom**

Also Available: 1917/108 - 5½" x 3½" Cigarette Box and Cover, Star Bottom



**1917/113 - 5½" Comport, E Dresden**

Listed as Dresden No. 36  
Also available as Adams No. 36



**1917/115 - 6" Comport, E Wedgewood**

Listed as Wedgewood No. 39  
Also available as Adams No. 39



**1917/117 - 5½" Comport**

Used on 1917/105 - 10" Cheese and Cracker  
Listed as Wedgewood No. 3½  
Listed as Adams No. 3½  
Listed as Dresden No. 3½



**1917/145 - Finger Bowl**

Available Cut Bottom



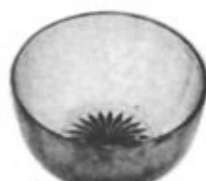
**1917/146 - Finger Bowl**

Available Cut Bottom



**1917/147 - Finger Bowl, Optic, Star Bottom**

Available Cut Bottom



**1917/148 - Finger Bowl, Optic, Star Bottom**

Available Cut Bottom



**1917/149 - Finger Bowl, Star Bottom**

Available Cut Bottom



**1917/150 - Finger Bowl, Star Bottom**

Available Cut Bottom



**1917/151 - Finger Bowl, Star Bottom**

Available Cut Bottom



**1917/161 - 6 oz. French Dressing Pitcher and Plate, Optic**

Available Cut Bottom



**1917/197 - Ice Tub, Star Bottom**

Available Cut Bottom



**1917/231 - 4¼" Lemon Tub, Star Bottom**

Available Cut Bottom



**1917/232 - 5½" Lemon Tub, Star Bottom**

Available Cut Bottom



**1917/239 - 6" Lily Bowl**

Also made in 7" and 8" sizes  
Available Cut Bottom



**1917/239 - 6" Lily Bowl, E Dresden**

Listed as Dresden No. 45  
Also available as Adams No. 45  
7" Lily Bowl available as Adams No. 46

Search results - "feb22"



**1917/254 - Mayonnaise Boat and Plate, Optic**

1917/254 - Mayonnaise Boat, Optic, no plate available  
Available Cut Bottom



**1917/255 - 3-piece Mayonnaise Set, Optic**

Set includes: 1917/255 - 3-toed Mayonnaise Bowl, Optic; 1917/255 - Mayonnaise Plate, Star Bottom, Optic; 1917/255 - Mayonnaise Ladle  
Plate Available Cut Bottom



**1917/256 - 3-piece Mayonnaise Set, Optic**

Set includes: 1917/256 - 3-toed Mayonnaise Bowl, Optic; 1917/256 - Mayonnaise Plate, Star Bottom, Optic; 1917/256 - Mayonnaise Ladle  
Plate Available Cut Bottom



**1917/265 - 8 1/2" Nabisco Biscuit Tray**

Old No. 3000 - 8 1/2" Nabisco Biscuit Tray



**1917/267 - 4 1/2" Nappy**

Available Cut Bottom



**1917/267 - 4 1/2" Nappy, Star Bottom, E Adams**

Listed as Adams No. 48  
Also available as Dresden No. 48



**1917/267 - 7" Nappy**

Also made in 8" and 9" sizes  
Available Cut Bottom



**1917/267 - 8" Nappy, Star Bottom, E Wedgewood**

Listed as Wedgewood No. 50  
Also 1917/267 - 7" Nappy, Star Bottom, E Wedgewood, Listed as Wedgewood No. 49



**1917/268 - 3 1/2" Nappy, Star Bottom**

Available Cut Bottom



**1917/268 - 4 1/2" Nappy, Star Bottom**

Available Cut Bottom



**1917/268 - 5" Nappy, Star Bottom**

Available Cut Bottom



**1917/268 - 6" Nappy, Star Bottom**

Available Cut Bottom



**1917/268 - 7" Nappy, Star Bottom**

Available Cut Bottom



**1917/268 - 8 1/4" Nappy, Star Bottom**

Available Cut Bottom



**1917/268 - 9 1/2" Nappy, Star Bottom**

Available Cut Bottom



**1917/269 - Belled Nappy, Star Bottom**

Made in 5 1/2", 6 1/2", 7 1/2", 8 1/2" and 9 1/2" sizes  
Available Cut Bottom



**1917/270 - 7" Deep Nappy**

Also made in 8" size  
Available Cut Bottom



**1917/271 - 7 1/2" Nappy, Belled**

Also made in 8 1/2" size  
Available Cut Bottom



**1917/272 - 6 1/2" Nappy, Star Bottom, Wide Optic**

Available Cut Bottom



**1917/273 - 4" Nappy, Optic**

Available Cut Bottom

Main Menu

- Home
- Login

- Album
- Search

Search results - "feb22"

- Main Menu
  - Home
  - Login
- Album list
- Search



1917/273 - 7 1/2" Nappy, Optic  
Available Cut Bottom



1917/274 - 4 1/2" Nappy, Star Bottom, Optic  
Available Cut Bottom



1917/276 - 4 1/2" Nappy, Star Bottom  
Available Cut Bottom



1917/280 - 6" Nappy, 1-handle  
Also 1917/281 - 6" Nappy, 2-Handle  
Available Cut Bottom



1917/282 - 5" Nappy, 1-handle, Star Bottom  
Also  
1917/282 - 6" Nappy, 1-handle, Star Bottom  
1917/283 - 5" Nappy, 2-handle, Star Bottom  
1917/283 - 6" Nappy, 2-handle, Star Bottom  
Available Cut Bottom



1917/282 - 5" Olive, 1-handle, Star Bottom, E Wedgewood  
Listed as Wedgewood No. 40  
Also available as Adams No. 40



1917/282 - 6" Nappy, 1-handle, Star Bottom  
Also 1917/283 - 6" Nappy, 2-handle, Star Bottom  
Available Cut Bottom



1917/284 - 5" Nappy, 1-handle, Star Bottom  
Also 1917/284 - 6" Nappy, 1-handle, Star Bottom  
Available Cut Bottom



1917/284 - 6" Nappy or Olive, 1-handle, Star Bottom, E Wedgewood (Crystal)  
Listed as Wedgewood No. 41



1917/285 - 6" Nappy, 2-Handle, Star Bottom  
Also 1917/285 - 7 1/2" Nappy, 2-Handle, Star Bottom  
Available Cut Bottom



1917/286 - 6" 4-compartment Nappy, Star Bottom, 2-handle  
Available Cut Bottom



1917/288 - 6" Nut Bowl, Star Bottom, E Wedgewood  
Listed as Wedgewood No. 45  
Also 1917/288 - 7" Nut Bowl, Star Bottom, E Wedgewood, Listed as Wedgewood No. 46



1917/289 - 9" Nut Bowl, Center Handle  
Available Cut Bottom



1917/296 - 9 oz. Squat Oil, Ground or Drop Stopper  
Light Blown



1917/297 - 7 oz. Tall Oil, Ground or Drop Stopper



1917/298 - 5 1/2 oz. Tall Oil, Ground or Drop Stopper  
Old 2590 1/2 - 6 oz. Tall Oil



1917/321 - 5" Pansy Bowl  
Also made in 6" and 7" sizes  
Available Cut Bottom



1917/327 - 9" Pickle Tray  
Available Cut Bottom



1917/329 - 4" Plate, 2 1/4" Seat, Plain Bottom, Plain  
Also:  
4 1/2" Plate, 2 3/8" Seat  
4 3/4" Plate, 3" Seat  
5 1/4" Plate, 3" Seat  
7" Plate, 3 3/4" Seat  
8" Plate, 4 1/8" Seat  
11 1/2" Plate, 5 1/2" Seat  
13" Plate, 6 3/4" Seat



1917/329 1/2 - 5" Plate, 3" Seat, Plain Bottom, Optic  
Also:  
7" Plate, 3 3/4" Seat  
11 1/2" Plate, 5 1/2" Seat  
13" Plate, 6 3/4" Seat



**1917/330 - 5¾" Plate, 1⅞" Seat, Plain Bottom, Plain**

Also:  
6" Plate, 2⅜" Seat  
7" Plate, 2½" Seat  
9" Plate, 3½" Seat  
10½" Plate, 3¾" Seat  
11½" Plate, 3¾" Seat



**1917/331 - 5¾" Plate, 1⅞" Seat, Star Bottom, Plain**

Also:  
6" Plate, 2⅜" Seat  
7" Plate, 2¾" Seat  
9" Plate, 3" Seat  
10½" Plate, 3¾" Seat  
12" Plate, 4½" Seat



**1917/333 - 6" Plain Plate, 2¾" Seat, Plain Bottom**

Also 1917/333½ - 6" Plate, 2¾" Seat, Optic, Plain Bottom



**1917/334 - 6" Shallow Preserve, Wide, Optic**  
Available Cut Bottom



**1917/353 - Salad Bowl and Plate**

Includes:  
1917/352 - 5" Salad Bowl and 1917/331 - 7" Plate  
1917/352 - 6" Salad Bowl and 1917/331 - 9" Plate  
1917/352 - 7" Salad Bowl and 1917/330 - 10½" Plate  
1917/352 - 8" Salad Bowl and 1917/331 - 10½" Plate  
1917/352 - 9" Salad Bowl and 1917/331 - 12" Plate  
1917/352 - 10" Salad Bowl and 1917/329 - 11½" Plate  
1917/352 - 11" Salad Bowl and 1917/329 - 13" Plate



**1917/355 - Footed Salt Dip**



**1917/361 - 10" Sandwich Tray, Center Handle (Version #1)**  
Available sizes: 8½", 10", 11", 12"



**1917/361 - 12" Sandwich Tray, Center Handle**

Also available 1917/361 - 10" Sandwich Tray (Version 1), E Adams Listed as Adams No. 2



**1917/384 - 5 oz. Syrup, Cover and Plate, Optic**  
Available 1917/384 - 5 oz. Syrup, Optic and Cover, No Plate  
1917/384 - 5 oz. Syrup, Optic, No Cover  
Available Cut Bottom



**1917/386 - 8 oz. Syrup, Cover and Plate**  
Available without Plate



**1917/386 - 12 oz. Syrup, Cover and Plate**  
Available without Plate



**No. 2 - 9¼" Cupped Bowl and Ebony Foot**

Available Plain; Available without Foot; Available D/120 [E527 Rose (Version 2)] Gold Band Overlay and Gold or Enamel Encrusted Versions, Available D/140 Gold Band Overlay, Available D/150



**No. 4 - 7¾" Cupped Bowl and Ebony Foot**

Available Plain; Available without Foot; Available D/120 [E527 Rose (Version 2)] Gold Band Overlay and Gold or Enamel Encrusted Versions, Available D/140 Gold Band Overlay, Available D/150



**No. 5 - 7¼" Cupped Bowl and Ebony Foot**

Available Plain; Available without Foot; Available D/120 [E527 Rose (Version 2)] Gold Band Overlay and Gold or Enamel Encrusted Versions, Available D/140 Gold Band Overlay, Available D/150



**No. 6 - 6¼" Cupped Bowl and Ebony Foot**

Available Plain; Available without Foot; Available D/120 [E527 Rose (Version 2)] Gold Band Overlay and Gold or Enamel Encrusted Versions, Available D/140 Gold Band Overlay, Available D/150



**No. 10 - 7" 3-toed Cupped Bowl**  
Old No. 2943 - 7½" 3-footed Chinese Lily Bowl

Available Plain; Available D/120 [E527 Rose (Version 2)] Gold Band Overlay and Gold or Enamel Encrusted Versions, Available D/140 Gold Band Overlay, Available D/150



**No. 12 - 12½" Shallow Cupped Bowl and Ebony Foot with 2899 Flower Block**

Available Plain; Available without Foot; Available without Flower Block; Available D/120 [E527 Rose (Version 2)] Gold Band Overlay and Gold or Enamel Encrusted Versions, Available D/140 Gold Band Overlay, Available D/150



**No. 13 - 11" Shallow Cupped Bowl and Ebony Foot with 2899 Flower Block**

Available Plain; Available without Foot; Available without Flower Block; Available D/120 [E527 Rose (Version 2)] Gold Band Overlay and Gold or Enamel Encrusted Versions, Available D/140 Gold Band Overlay, Available D/150



**No. 14 - 10" Shallow Cupped Bowl and Ebony Foot with 2899 Flower Block**

Available Plain; Available without Foot; Available without Flower Block; Available D/120 [E527 Rose (Version 2)] Gold Band Overlay and Gold or Enamel Encrusted Versions, Available D/140 Gold Band Overlay, Available D/150



**No. 15 - 8½" Shallow Cupped Bowl and #0 Ebony Foot**

Available Plain; Available without Foot; Available without Flower Block; Available D/120 [E527 Rose (Version 2)] Gold Band Overlay and Gold or Enamel Encrusted Versions, Available D/140 Gold Band Overlay, Available D/150



Search results - "feb22"

Main Menu

- [Home](#)
- [Login](#)

- [Album list](#)
- [Search](#)



**No. 16 - 7 1/2" Shallow Cupped Bowl and Ebony Foot**

Available Plain; Available without Foot; Available D/120 [E527 Rose (Version 2)] Gold Band Overlay and Gold or Enamel Encrusted Versions, Available D/140 Gold Band Overlay, Available D/150



**No. 17 - 10" Bowl, A Shape (Round)**

Available with Foot



**No. 18 - 8 1/2" Bowl, A Shape (Round)**

Available with Foot



**No. 19 - 9" Bowl, A Shape (Round)**

Available with Foot



**No. 20 - 8 1/4" Bowl, A Shape (Round)**

Available with Foot



**No. 21 - 7" Bowl, A Shape (Round)**

Available with Foot



**No. 23 - 10 1/2" Bowl, Belled**

Available Plain; Available with Foot; Available D/120 [E527 Rose (Version 2)] Gold Band Overlay and Gold or Enamel Encrusted Versions, Available D/140 Gold Band Overlay, Available D/150



**No. 24 - 9" Bowl, Belled**

Available Plain; Available with Foot; Available D/120 [E527 Rose (Version 2)] Gold Band Overlay and Gold or Enamel Encrusted Versions, Available D/140 Gold Band Overlay, Available D/150



**No. 25 - 9 1/2" Belled Bowl and Ebony Foot**

Also listed as 10" and 10 1/2" Belled Bowl at different times  
Available Plain; Available without Foot; Available D/120 [E527 Rose (Version 2)] Gold Band Overlay and Gold or Enamel Encrusted Versions, Available D/140 Gold Band Overlay, Available D/150



**No. 26 - 8 1/2" Belled Bowl and #00 Ebony Foot**

Also listed as 9" Belled Bowl at different times  
Available Plain; Available without Foot; Available D/120 [E527 Rose (Version 2)] Gold Band Overlay and Gold or Enamel Encrusted Versions, Available D/140 Gold Band Overlay, Available D/150



**No. 27 - 7 1/4" Belled Bowl and Ebony Foot**

Available Plain; Available without Foot; Available D/120 [E527 Rose (Version 2)] Gold Band Overlay and Gold or Enamel Encrusted Versions, Available D/140 Gold Band Overlay, Available D/150



**No. 28 - 8 1/2" Bowl, Belled**

Available with Foot



**No. 29 - 12" Shallow Belled Bowl and Ebony Foot**

Available Plain; Available without Foot; Available D/120 [E527 Rose (Version 2)] Gold Band Overlay and Gold or Enamel Encrusted Versions, Available D/140 Gold Band Overlay, Available D/150



**No. 30 - 10" Shallow Belled Bowl and Ebony Foot**

Available Plain; Available without Foot; Available D/120 [E527 Rose (Version 2)] Gold Band Overlay and Gold or Enamel Encrusted Versions, Available D/140 Gold Band Overlay, Available D/150



**No. 31 - 9" Shallow Belled Bowl and Ebony Foot**

Available Plain; Available without Foot; Available D/120 [E527 Rose (Version 2)] Gold Band Overlay and Gold or Enamel Encrusted Versions, Available D/140 Gold Band Overlay, Available D/150



**No. 32 - 10 5/8" Bowl, Rolled Edge**

Available Plain; Available without Foot; Available D/120 [E527 Rose (Version 2)] Gold Band Overlay and Gold or Enamel Encrusted Versions, Available D/140 Gold Band Overlay, Available D/150



**No. 33 - 9 1/4" Bowl, Rolled Edge**

Available with Foot



**No. 34 - 10" Rolled Edge Bowl and Ebony Foot**

Available Plain; Available without Foot; Available D/120 [E527 Rose (Version 2)] Gold Band Overlay and Gold or Enamel Encrusted Versions, Available D/140 Gold Band Overlay, Available D/150



**No. 35 - 9" Rolled Edge Bowl and Ebony Foot**

Available Plain; Available without Foot; Available D/120 [E527 Rose (Version 2)] Gold Band Overlay and Gold or Enamel Encrusted Versions, Available D/140 Gold Band Overlay, Available D/150



**No. 36 - 7 1/2" Rolled Edge Bowl and Ebony Foot**

Available Plain; Available without Foot; Available D/120 [E527 Rose (Version 2)] Gold Band Overlay and Gold or Enamel Encrusted Versions, Available D/140 Gold Band Overlay, Available D/150



Search results - "feb22"

Main Menu

- Home
- Login

- Album list
- Search



**No. 37 - 9" Bowl, Rolled Edge**  
Available with Foot



**No. 38 - 9" Bowl, Flat Rim**  
Available with Foot



**No. 39 - 11 1/2" Flat Rim Bowl and Ebony Foot**  
Available Plain; Available without Foot; Available D/120 [E527 Rose (Version 2)] Gold Band Overlay and Gold or Enamel Encrusted Versions, Available D/140 Gold Band Overlay, Available D/150



**No. 40 - 10" Bowl, Flat Rim**  
Available with Foot



**No. 45 - 9 1/2" Dia Low Footed Comport, Rolled Edge**  
Available D/120 [E527 Rose (Version 2)] Gold Band Overlay and Gold or Enamel Encrusted Versions, D/140 Gold Band Overlay, D/150



**No. 46 - 8" Dia Low Footed Comport, Rolled Edge**  
Available D/120 [E527 Rose (Version 2)] Gold Band Overlay and Gold or Enamel Encrusted Versions, D/140 Gold Band Overlay, D/150



**No. 47 - 6 3/4" Dia Low Footed Comport, Rolled Edge**  
See also No. 247 and No. 447  
Available D/120 [E527 Rose (Version 2)] Gold Band Overlay and Gold or Enamel Encrusted Versions, D/140 Gold Band Overlay, D/150



**No. 48 - 10 1/4" Dia Footed Bowl, Belled**  
Available Plain; Available D/120 [E527 Rose (Version 2)] Gold Band Overlay and Gold or Enamel Encrusted Versions, D/140 Gold Band Overlay, D/150



**No. 56 - 9 1/2" Dia Low Footed Bowl, Belled**  
Available Plain; Available D/120 [E527 Rose (Version 2)] Gold Band Overlay and Gold or Enamel Encrusted Versions, D/140 Gold Band Overlay, D/150



**No. 57 - 8 1/4" Dia Low Footed Bowl, Belled**  
Available Plain; Available D/120 [E527 Rose (Version 2)] Gold Band Overlay and Gold or Enamel Encrusted Versions, D/140 Gold Band Overlay, D/150



**No. 60 - 5" Dia Tall Comport, Cupped**  
Available D/120 [E527 Rose (Version 2)] Gold Band Overlay and Gold or Enamel Encrusted Versions, D/150



**No. 62 - 7 1/4" Dia Tall Comport, Belled**  
Available D/120 [E527 Rose (Version 2)] Gold Band Overlay and Gold or Enamel Encrusted Versions, D/140 Gold Band Overlay, D/150



**No. 63 - 6" Dia Tall Comport, Belled**  
Available D/120 [E527 Rose (Version 2)] Gold Band Overlay and Gold or Enamel Encrusted Versions, D/140 Gold Band Overlay, D/150



**No. 68 - 10" Candlestick**  
Also sold as 200/1 - 10" Candlestick  
Available D/120 [E527 Rose (Version 2)] Gold Band Overlay and Gold or Enamel Encrusted Versions, Available D/140 Gold Band Overlay, Available D/150



**No. 69 - 7 1/2" Candlestick**  
Also sold as 200/2 - 7 1/2" Candlestick  
Available D/120 [E527 Rose (Version 2)] Gold Band Overlay and Gold or Enamel Encrusted Versions, Available D/140 Gold Band Overlay, Available D/150



**No. 70 - 8" Candlestick**  
Same as 2800/109 and 200/5 - 8" Candlestick  
Available D/120 [E527 Rose (Version 2)] Gold Band Overlay and Gold or Enamel Encrusted Versions, Available D/140 Gold Band Overlay, Available D/150



**No. 71 - 7 1/2" Candlestick**  
Old No. 2800/107 - 7 1/2" Candlestick  
Available D/120 [E527 Rose (Version 2)] Gold Band Overlay and Gold or Enamel Encrusted Versions, Available D/140 Gold Band Overlay, Available D/150  
Also available No. 71 1/2 - 8 1/2" Candlestick, available with above Decorates



**No. 72 - 7" Candlestick**  
Old No. 2859 and No. 200/20 - 7" Candlestick  
Available D/120 [E527 Rose (Version 2)] Gold Band Overlay and Gold or Enamel Encrusted Versions, Available D/140 Gold Band Overlay, Available D/150



**No. 75 - 10" Vase**  
Old No. 2368 - 10" Vase  
Available D/120 [E527 Rose (Version 2)] Gold Band Overlay and Gold or Enamel Encrusted Versions, Available D/140 Gold Band Overlay, Available D/150



**No. 76 - 10" Vase**  
Old No. 6011 - 10" Vase  
Available D/120 [E527 Rose (Version 2)] Gold Band Overlay and Gold or Enamel Encrusted Versions, Available D/140 Gold Band Overlay, Available D/150



**No. 77 - 10" Vase**

Available D/120 [E527 Rose (Version 2)]  
Gold Band Overlay and Gold or Enamel  
Encrusted Versions, Available D/140  
Gold Band Overlay, Available D/150



**No. 78 - 10" Vase**

Old No. 2357 - 10" Vase  
Available D/120 [E527 Rose (Version 2)]  
Gold Band Overlay and Gold or Enamel  
Encrusted Versions, Available D/140  
Gold Band Overlay, Available D/150



**No. 79 - 8" Vase**

Old No. 2357 - 8" Vase  
Available D/120 [E527 Rose (Version 2)]  
Gold Band Overlay and Gold or Enamel  
Encrusted Versions, Available D/140  
Gold Band Overlay, Available D/150



**No. 81 - 12" Vase**

Old No. 2358 - 12" Vase  
Available D/120 [E527 Rose (Version 2)]  
Gold Band Overlay and Gold or Enamel  
Encrusted Versions, Available D/140  
Gold Band Overlay, Available D/150



**No. 82 - 10" Vase**

Old No. 2358 - 10" Vase  
Available D/120 [E527 Rose (Version 2)]  
Gold Band Overlay and Gold or Enamel  
Encrusted Versions, Available D/140  
Gold Band Overlay, Available D/150



**No. 83 - 8" Vase**

Old No. 2358 - 8" Vase  
Available D/120 [E527 Rose (Version 2)]  
Gold Band Overlay and Gold or Enamel  
Encrusted Versions, Available D/140  
Gold Band Overlay, Available D/150



**No. 84 - 12" Footed Vase**

Old No. 2366 - 12" Vase  
Available D/120 [E527 Rose (Version 2)]  
Gold Band Overlay and Gold or Enamel  
Encrusted Versions, Available D/140  
Gold Band Overlay, Available D/150



**No. 85 - 10" Footed Vase**

Old No. 2366 - 10" Vase  
Available D/120 [E527 Rose (Version 2)]  
Gold Band Overlay and Gold or Enamel  
Encrusted Versions, Available D/140  
Gold Band Overlay, Available D/150



**No. 86 - 8" Footed Vase**

Old No. 2366 - 8" Vase  
Available D/120 [E527 Rose (Version 2)]  
Gold Band Overlay and Gold or Enamel  
Encrusted Versions, Available D/140  
Gold Band Overlay, Available D/150



**No. 87 - 9 1/2" Vase**

Old No. 2361 - 10" Vase  
Available D/120 [E527 Rose (Version 2)]  
Gold Band Overlay and Gold or Enamel  
Encrusted Versions, Available D/140  
Gold Band Overlay, Available D/150



**No. 88 - 10" Vase**

Old No. 6001 - 10" Vase  
Available D/120 [E527 Rose (Version 2)]  
Gold Band Overlay and Gold or Enamel  
Encrusted Versions, Available D/140  
Gold Band Overlay, Available D/150



**No. 90 - 8" x 3/4" Bud Vase**

Shortened to 6" by the late 1930s.  
Available D/140 Gold Band Overlay



**No. 91 - 10" x 3/4" Bud Vase**

Shortened to 8" by the late 1930s.  
Available D/140 Gold Band Overlay



**No. 92 - 12" x 3/4" Bud Vase**

Shortened to 10" by the late 1930s.  
Available D/140 Gold Band Overlay



**No. 93 - 10" Vase**

Old No. 2360 - 10" Vase  
Available D/120 [E527 Rose (Version 2)]  
Gold Band Overlay and Gold or Enamel  
Encrusted Versions, Available D/140  
Gold Band Overlay, Available D/150



**No. 94 - 7" x 8 1/4" Sweet Pea Vase**

Available D/120 [E527 Rose (Version 2)]  
Gold Band Overlay and Gold or Enamel  
Encrusted Versions, Available D/140  
Gold Band Overlay, Available D/150



**No. 96 - 1/2 Pound Candy Jar and Cover**

Available D/120 [E527 Rose (Version 2)]  
Gold Band Overlay and Gold or Enamel  
Encrusted Versions, D/140 Gold Band  
Overlay, D/150  
Liquid capacity 16 oz.  
8 1/2" Ht



**No. 97 - 6" 3-compartment Candy Box and Version 1 Cover**

Production continued into the 1930s with  
a different cover  
Available D/120 [E527 Rose (Version 2)]  
Gold Band Overlay and Gold or Enamel  
Encrusted Versions, Available D/140  
Gold Band Overlay, Available D/150



**No. 101 - 5" Bonbon and Cover**

Available D/120 [E527 Rose (Version 2)]  
Gold Band Overlay and Gold or Enamel  
Encrusted Versions, Available D/140  
Gold Band Overlay, Available D/150



**No. 103 - 7" 3-compartment Candy Box and Cover**

Round Line  
Available D/1046 Gold Bands, D/1049  
Gold Encrusted Bordo Wide Band,  
D/1055 Wide Gold Encrusted Border



**No. 122 - 8 1/2" Basket, Plain Handle, Paste Mold, 14" Ht**



**No. 123 - 7 1/2" Basket, Plain Handle, Paste Mold, 12" Ht**

No  
Identified  
Image  
Available

**No. 134 - 10" Cheese and Cracker**  
Available D/140 Gold Band Overlay



**No. 135 - 10" Cheese and Cracker, Version 1**  
Round Line  
Available D/120 [E527 Rose (Version 2)] Gold Band Overlay and Gold or Enamel Encrusted Versions, Available D/140 Gold Band Overlay, Available D/150



**No. 137 - Cream**  
Round Line  
Available D/120 [E527 Rose (Version 2)] Gold Band Overlay and Gold or Enamel Encrusted Versions, Available D/150



**No. 137 - Sugar**  
Round Line  
Available D/120 [E527 Rose (Version 2)] Gold Band Overlay and Gold or Enamel Encrusted Versions, Available D/150



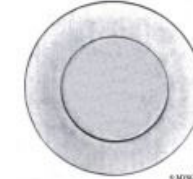
**No. 138 - Cream**  
Available R. C. Eng. 732 Carnation, 907 Neo Classic, 937 Buckingham, 944 Windsor-Waterford, Laurel Wreath, D/1049 Gold Encrusted Bordero Wide Band



**No. 138 - Sugar**  
Available R. C. Eng. 732 Carnation, 907 Neo Classic, 937 Buckingham, 944 Windsor-Waterford, Laurel Wreath, D/1049 Gold Encrusted Bordero Wide Band



**No. 155 - 8" Salad Plate, Star Bottom**  
Available D/120 [E527 Rose (Version 2)] Gold Band Overlay and Gold or Enamel Encrusted Versions, Available D/140 Gold Band Overlay, D/145 Gold Encrusted Minton Border, Available D/150



**No. 156 - 8" Salad Plate, Plain Bottom**  
Available D/120 [E527 Rose (Version 2)] Gold Band Overlay and Gold or Enamel Encrusted Versions, Available D/140 Gold Band Overlay, Available D/150



**No. 164 - 10" Footed Trumpet Vase, Light Blown**  
Available D/120 [E527 Rose (Version 2)] Gold Band Overlay and Gold or Enamel Encrusted Versions, Available D/140 Gold Band Overlay, Available D/150



**No. 174 - 9 oz. Squat Sanitary Syrup, Metal Top on No. 602 5 1/4" Coaster Plate**  
Round Line aka 174/602 Syrup with Cover and Plate  
Also available on No. 605 5" Plate  
Available D/1046 Gold Bands (individually or as a set)



**No. 181 - 14" Vase**  
Also sold as: No. 181 1/2 - 14" Vase with hole in bottom for Lamp  
Same as No. 779 - 14" Vase



**No. 206 - 1 1/2 oz. Footed Perfume or Cologne, Small, Ground Drip Stopper**



**No. 208 - 2 1/4 oz. Footed Perfume, Large, Drip Stopper**  
Same shape as No. 207 but larger 6 1/2" Ht



**No. 214 - 10" Round Tray, 2-handle**



**No. 218 - 9" Blown Candlestick**  
Available D/120 [E527 Rose (Version 2)] Gold Band Overlay and Gold or Enamel Encrusted Versions, Available D/140 Gold Band Overlay, Available D/150



**No. 242 - 13 1/2" Plate**  
Available R. C. Eng. 755 Concord, 758 Lexington, 810 Exeter, 850 Stafford, 854 Brentwood, 897 Candlelight, 900 (Grey Flower), 906 Mansard, 929 Symphony, 930 Celestial, 940 Stradivari, Laurel Wreath, D/1049 Gold Encrusted Bordero Wide Band, D/1055 Wide Gold Encrusted Border



**No. 250 - 7 1/2" Dia Low Footed Comport, Belled**  
Available D/120 [E527 Rose (Version 2)] Gold Band Overlay and Gold or Enamel Encrusted Versions, D/140 Gold Band Overlay, D/150



**No. 251 - 6" Dia Low Footed Comport, Belled**  
Available D/120 [E527 Rose (Version 2)] Gold Band Overlay and Gold or Enamel Encrusted Versions, D/140 Gold Band Overlay, D/150

Search results - "feb22"

- Main Menu
- Home
- Login
- Album list
- Search



**No. 278 - 11" Footed Vase**  
Available E Blossom Time, D/Japonica, ,  
D/1049 Gold Encrusted Bordero Wide Band



**No. 531 - 7 1/2" Dia Tall Compot, Wide Bell**  
Round Line  
Available D/Japonica, D/1049 Gold Encrusted  
Bordero Wide Band, D/1055 Wide Gold  
Encrusted Border



**No. 556 - 8" Plate**  
Available D/Victory, D/1049 Gold Encrusted  
Bordero Wide Band



**No. 627 - 4" Candlestick**  
3400 line accessory.  
Available R. C. Eng. 527 Ravenna, 698  
Achilles, 717 Cicero, 812 Cordelia, 824 Lucia,  
830 Melrose, 843 Beverly, 851 Berkeley, 894  
Hermosa, 895 Sonora, 897 Candlelight, 904  
Sylvia, 905 Delta, 906 Mansard, 907 Neo  
Classic, 912 Commodore, Dundee, D/1049  
Gold Encrusted Bordero Wide Band



**No. 628 - 3 1/2" Candlestick**  
Round Line  
Available E752 Diane, E762 Elaine, E  
Candlelight, E773 Wildflower, D/1046 Gold  
Bands, D/1055 Wide Gold Encrusted Border



**No. 636 - 9 1/2" Candlestick**  
Available D/1055 Wide Gold Encrusted Border



**No. 647 - 6" 2-lite Candlestick, Version 4, Round Foot**  
3400 line accessory.  
Also Seashell line accessory  
Available E Blossom Time  
Available D/460 Wedding Band, D/1049 Gold  
Encrusted Bordero Wide Band, D/1055 Wide  
Gold Encrusted Border



**No. 925/1327 - 18-piece After Dinner Coffee and Cordial Set**  
Set includes No. 925 - After Dinner Cup and  
Saucer and 1327 - 1 oz. Footed Cordial  
Available D/1046 Gold Bands (Individually or  
as a set)



**No. 925 - After Dinner Cup, D/1046 Gold Bands (Crystal)**  
Round Line



**No. 993 - 12 1/2" Bowl**  
Available R. C. Eng. 732 Carnation, 758  
Lexington, 810 Exeter, 821 King Edward, 824  
Lucia, 850 Stafford, 854 Brentwood, 906  
Mansard, D/1049 Gold Encrusted Bordero  
Wide Band



**1240 - 12" 4-toed Oval Refectory Bowl**  
3400 line accessory  
Available D/Japonica, D/1049 Gold Encrusted  
Bordero Wide Band, D/1055 Wide Gold  
Encrusted Border  
Available as a console set with No. 647 or No.  
638 candlesticks engraved 699



**1305 - 10" Urn Vase (Crown Tuscan)**



**1495 - 11 1/2" Plate, 2-handle**  
Available R. C. Eng. 732 Carnation, 821 King  
Edward, 901, 937 Buckingham, 944 Windsor  
Waterford, 979 Vesta, 982 Colfax, Radiant  
Rose, D/1049 Gold Encrusted Bordero Wide  
Band



**1496 - 11 1/2" Cheese and Cracker**  
Available R. C. Eng. 732 Carnation, 901, 937  
Buckingham, 944 Windsor-Waterford, 979  
Vesta, 1010 Empire, D/1049 Gold Encrusted  
Bordero Wide Band



**1496 - Plate for 11 1/2" Cheese and Cracker, D/1056, E779 with Two Gold Band Border (Crystal)**  
No. 254 - 5 1/2" Dia Compot missing



**1532 - 3-piece Blown Mayonnaise Set**  
Round Line  
Available E752 Diane, E754 Portia, E Blossom  
Time, E Candlelight  
Available D/460 Wedding Band, D/1055 Wide  
Gold Encrusted Border



**1561 - 86 oz. Ice Lipped Jug**  
Also available 1561/7801 7-piece Ice Tea Set,  
includes 1561 - 86 oz. Ice Lipped Jug and 6  
7801 - 12 oz. Footed Ice Tea Tumblers  
Also available 1561/7801 9-piece Ice Tea Set,  
includes 1561 - 86 oz. Ice Lipped Jug and 8  
7801 - 12 oz. Footed Ice Tea Tumblers  
Available E762 Elaine, E Blossom time, E773  
Wildflower



**2033 - Cake or Cheese Cover, Hand Made**  
Available Sizes:  
6" Dia, 4 1/4" Shoulder Ht  
7" Dia, 4 1/2" Shoulder Ht  
8" Dia, 5 1/4" Shoulder Ht  
9" Dia, 5 1/2" Shoulder Ht  
10" Dia, 6" Shoulder Ht  
11" Dia, 6 1/2" Shoulder Ht  
12" Dia, 7" Shoulder Ht  
13" Dia, 7 1/2" Shoulder Ht  
14" Dia, 8 1/2" Shoulder Ht  
15" Dia, 9" Shoulder Ht  
16" Dia, 10" Shoulder Ht  
16 1/2" Dia, 11" Shoulder Ht  
17" Dia, 10 1/2" Shoulder Ht  
18" Dia, 11" Shoulder Ht  
20" Dia  
Also Available: Ventilated Knob or hole in  
Knob  
Use 1" smaller Cake Cover than Salver (IE 9"  
Cake Cover fits 10" Salver)



**2090 - 5" Footed Jelly Compot**  
Available Needle Etching 218, Needle Etching  
311, Needle Etching 319



**2231 - 2 oz. Blown Marmalade**  
Also listed as: 2231 - 2 oz. Blown Mustard



**2351 - Custard or Punch Cup, 1-Handle**  
3½" Dia, 2½" Ht



**2351 - Shaker**

Available Tops: No Top, #3 Heavy Cast Nickel, #4 Cone Non-Corrosive, #5 Heavy Silver Plated, #11 Aluminum and Pearl Center, #14 Non-Corrosive Dome, #16 Aluminum Plated Dome, #17 All Glass, #18 Cast Nickel Pourer, #19 Pyramid Silver Plated  
Available Plain, or Cut Top & Bottom



**2368 - 8" Vase**

Also made in 10" and 12" sizes  
Sold as No. 75 (10") from 1920s on  
Available E524 Betty



**2369 - Marmalade Cover**

Fits 129, 142, 145, 146, 147, 148, 149, 152 Marmalades



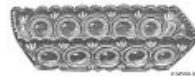
**2400 - Horseradish Jar, Ground Stopper**

Also see: No. 10 - Blown Horseradish Jar



**2504 - Cream, 1-handle**

Available with Pressed or Applied Handle



**2507 - 7" Oblong Candy Tray**

Also Made in 8" size  
Available Finished or Unfinished



**2508 - 8" Footed Cake Salver, 5" Ht**



**2544 - 5¾" x 7½" Candy Plate**

Available Finished or Unfinished



**2546 - Footed Hand Lamp, 0 Size, #1 Collar**



**2546 - Hand Lamp, 0 Size, #1 Collar**



**2546 - Stand Lamp, 0 Size, #1 Collar**



**2547 - Stand Lamp, 0 Size, #1 Collar**



**2548 - Stand Lamp, 0 Size, #1 Collar**



**2566 - Sewing Lamp, C Size, #2 Riverside Clinch-on Collar, 8½" Ht**



**2572 - Sewing Lamp, C Size, #2 Riverside Clinch-on Collar, 8½" Ht**



**2574 - Flat Hand Lamp, 0 Size, #1 Collar, 3" Ht**

Available Collars: plaster, Cambridge shrunk-on, or Riverside clinch-on



**2574 - Footed Hand Lamp, 0 Size, #1 Collar, 5" Ht**

Available Collars: plaster, Cambridge shrunk-on, or Riverside clinch-on



**2574 - Sewing Lamp, C Size, #2 Collar, 8½" Ht**

Also Available:  
D Size Sewing Lamp - 8¾" Ht  
F Size Sewing Lamp - 8¾" Ht  
00 Size Stand Lamp - 7¾" Ht  
0 Size Stand Lamp - 7¾" Ht  
A Size Stand Lamp - 8" Ht  
B Size Stand Lamp - 8½" Ht  
C Size Stand Lamp - 9½" Ht  
D Size Stand Lamp - 10" Ht  
Available Collars: plaster, Cambridge shrunk-on, or Riverside clinch-on



**2575 - Stand Lamp, 00 Size, #1 Collar, 7¾" Ht**

Also Available:  
0 Size Stand Lamp, #1 Collar - 7¾" Ht  
A Size Stand Lamp, #1 Collar - 8" Ht  
A Size Stand Lamp, #2 Collar - 8" Ht  
B Size Stand Lamp, #2 Collar - 8¾" Ht  
C Size Stand Lamp, #2 Collar - 9¾" Ht  
D Size Stand Lamp, #2 Collar - 10¼" Ht  
Available Collars: plaster, Cambridge shrunk-on, or Riverside clinch-on



Search results - "feb22"

Main Menu

- Home
- Login

- Album list
- Search



**2575 - Flat Hand Lamp, 0 Size, #1 Collar**  
Available Collars: plaster, Cambridge shrunk-on, or Riverside clinch-on



**2575 - Footed Hand Lamp, 0 Size, #1 Collar**

Also Available:  
A Size Footed Hand Lamp, #1 Collar - 4 $\frac{7}{8}$ " Ht  
B Size Footed Hand Lamp, #2 Collar - 4 $\frac{7}{8}$ " Ht  
C Size Footed Hand Lamp, #2 Collar - 5 $\frac{7}{8}$ " Ht  
Available Collars: plaster, Cambridge shrunk-on, or Riverside clinch-on



**2575 - Footed Hand Lamp, A Size, #1 Collar, 4 $\frac{7}{8}$ " Ht**

Also available in B and C sizes, #2 collars



**2575 - Sewing Lamp, C Size, #2 Collar**

Also Available:  
D Size Sewing Lamp - 8 $\frac{3}{8}$ " Ht  
E Size Sewing Lamp - 9" Ht  
Available Collars: plaster, Cambridge shrunk-on, or Riverside clinch-on



**2576 - Hand Lamp, 0 Size, #1 Plaster Collar (Version 1)**



**2576 - Footed Hand Lamp, 0 Size, #1 Shrunk-on Collar (Version 1)**



**2576 - Stand Lamp, 0 Size, #1 Collar (Version 1)**



**2576 - Hand Lamp, 0 Size, #1 Collar (Version 2)**



**2576 - Stand Lamp, 0 Size, #1 Collar**



**2580 - Sewing Lamp, C Size, #2 Collar, 8 $\frac{1}{2}$ " Ht**

Also Available:  
0 Size Flat Hand Lamp, #1 Collar  
0 Size Footed Hand Lamp, #1 Collar  
00 Size Stand Lamp, #1 Collar  
0 Size Stand Lamp, #1 Collar  
A Size Stand Lamp, #1 Collar  
A Size Stand Lamp, #2 Collar  
B Size Stand Lamp, #2 Collar  
C Size Stand Lamp, #2 Collar  
C Size Sewing Lamp, #2 Collar  
D Size Stand Lamp, #2 Collar  
Collars available: Plaster, Cambridge Shrunk-on, or Riverside Clinch-on



**2581 - Stand Lamp, C Size, Riverside Collar, 9 $\frac{3}{4}$ " Ht**

Also Available:  
00 Size Stand Lamp, #1 Collar - 7 $\frac{1}{2}$ " Ht  
0 Size Stand Lamp, #1 Collar - 8" Ht  
A Size Stand Lamp, #1 Collar - 8 $\frac{1}{4}$ " Ht  
B Size Stand Lamp, #2 Collar - 9" Ht  
C Size Stand Lamp, #2 Collar - 9 $\frac{3}{4}$ " Ht  
C Size Sewing Lamp, #2 Collar  
D Size Stand Lamp, #2 Collar - 10" Ht  
Collars available: Plaster, Cambridge Shrunk-on, or Riverside Clinch-on



**2581 - Footed Hand Lamp**

Also Available:  
0 Size Flat Hand Lamp, #1 Collar - 2 $\frac{1}{2}$ " Ht  
0 Size Footed Hand Lamp, #1 Collar - 5 $\frac{1}{4}$ " Ht



**2586 - 8" Sweet Pea Vase**



**2590 - Oval Salt Dip**

Available Cut Top & Bottom; or Cut Top & Bottom, Cut Wreath  
 $\frac{3}{4}$ " Ht x 1 $\frac{1}{8}$ " wide



**2590 $\frac{1}{2}$  - 5 $\frac{1}{2}$ " Footed Jelly Bowl and Cover**

Also Available:  
2590 $\frac{1}{2}$  - 6 $\frac{1}{2}$ " Footed Bowl, with Cover, or no Cover  
2590 $\frac{1}{2}$  - 7 $\frac{1}{2}$ " Footed Bowl, with Cover, or no Cover  
2590 $\frac{1}{2}$  - 8 $\frac{1}{2}$ " Footed Bowl, with Cover, or no Cover



**2590 $\frac{1}{2}$  - 4 oz. Mustard and Cover**  
Cover is 2590 $\frac{1}{2}$  - Notched Cover



**2593 - Shaker, Spun Nickel Top**  
Available Tops: No Top, #1 Spun Nickel, #3 Heavy Cast Nickel, #18 Cast Nickel Pourer



**2594 - Shaker, Spun Nickel Top**  
Available Tops: No Top, #1 Spun Nickel, #2 Spike Cast Nickel, #11 Aluminum and Pearl Center



**2595 - Shaker, Spun Nickel Top**  
Available Tops: No Top, #1 Spun Nickel, #3 Heavy Cast Nickel, #18 Cast Nickel Pourer



**2598 - Shaker, Spun Nickel Top**  
Available Tops: No Top, #1 Spun Nickel, #3 Heavy Cast Nickel, #18 Cast Nickel Pourer



**2599 - Shaker, Nickel Top**  
 Available Tops: No Top, #1 Spun Nickel, #3 Heavy Cast Nickel, #18 Cast Nickel Pourer



**2600 - Shaker, Nickel Top**  
 Available Tops: No Top, #1 Spun Nickel, #2 Spike Cast Nickel, #11 Aluminum and Pearl Center



**2601 - Saloon Shaker, Spun Nickel Top**  
 Available Tops: No Top, #1 Spun Nickel, #2 Spike Cast Nickel, #11 Aluminum and Pearl Center



**2602 - Shaker, Spun Nickel Top**  
 Available Tops: No Top, #1 Spun Nickel, #3 Heavy Cast Nickel, #18 Cast Nickel Pourer



**2603 - Shaker, Spun Nickel Top**  
 Available Tops: No Top, #1 Spun Nickel, #3 Heavy Cast Nickel, #18 Cast Nickel Pourer



**2604 - Shaker, Nickel Top**  
 Available Tops: No Top, #1 Spun Nickel, #3 Heavy Cast Nickel, #18 Cast Nickel Pourer  
 Available Blank, #3 Top; or #3 Top, Cut 3080



**2616 - 1½ oz. Plain Horn Candy Container**  
 Powder Horn Shape, furnished with cork lined tin cap, Embossed "Pat Appd For"



**2623 - Feeder Fount with Handle, #2 Plaster Collar**  
 Collars available: Plaster, Cambridge Shrunken-on, or Riverside Clinch-on



**2624 - Fount, #2 Plaster Collar**  
 Collars available: Plaster, Cambridge Shrunken-on, or Riverside Clinch-on



**2625 - Feeder Fount, #2 Plaster Collar**  
 Collars available: Plaster, Cambridge Shrunken-on, or Riverside Clinch-on



**2626 - Feeder Fount, #2 Riverside Collar**  
 Collars available: Plaster, Cambridge Shrunken-on, or Riverside Clinch-on



**2630/1 - Butter and Cover**  
 Also available as 4-piece Set Including Butter and Cover, Sugar and Cover, Cream and Spoon



**2630/1 - Cream**  
 Also available as 4-piece Set Including Butter and Cover, Sugar and Cover, Cream and Spoon



**2630/1 - Spoon**  
 Also available as 4-piece Set Including Butter and Cover, Sugar and Cover, Cream and Spoon



**2630/1 - Sugar and Cover, Large**  
 Also available as 4-piece Set Including Butter and Cover, Sugar and Cover, Cream and Spoon



**2630/1 - Sugar and Cover, Small**  
 Also available as 4-piece Set Including Butter and Cover, Sugar and Cover, Cream and Spoon



**2630/55 - Footed Bowl, C Shape (Belled)**  
 Available Sizes:  
 2630/55 - 7½" Footed Bowl, C Shape (Belled), 7" Ht  
 2630/55 - 8½" Footed Bowl, C Shape (Belled), 7¾" Ht  
 2630/55 - 9½" Footed Bowl, C Shape (Belled), 8" Ht



**2630/56 - Footed Bowl, Shallow, A Shape (Round)**  
 Available Sizes:  
 2630/55 - 7" Footed Bowl, Shallow, A Shape (Round), 7" Ht  
 2630/55 - 8" Footed Bowl, Shallow, A Shape (Round), 7¾" Ht  
 2630/55 - 9" Footed Bowl, Shallow, A Shape (Round), 8" Ht



**2630/217 - Quart Tall Tankard Pitcher, 8¼" Ht**  
 Also made 2630/217 - 3 Pint Tall Tankard Pitcher, 9¼" Ht



**2630/296 - Oil Bottle, Stopper Version 1**  
 Drop or Ground Stopper available Made in 5½ oz. and 7½ oz. sizes

Search results - "feb22"

Main Menu

- [Home](#)
- [Login](#)

- [Album list](#)
- [Search](#)

No Image Available

**2630/329 - Plate**  
Made in 7½", 9½" and 11" sizes



**2630/358 - Footed Cake Salver, Version 1**

Available Sizes:  
9", 5" Ht  
10", 5" Ht  
12", 5½" Ht



**2630/378 - Sugar Shaker or Sifter**

Available Tops: No Top, #1 Spun Nickel Top, #3 Heavy Cast Nickel



**2630/384 - 13 oz. Blown Molasses or Syrup Can, Patent Tin Top**

Available with Spun Nickel, O.K. Nickel Plated or Britannia O.K. Cast Nickel Top



**2630/391 - 4½ oz. Footed Colonial Sherbet**

Available with Unfinished or Finished Foot



**2630/392 - 3½ oz. Footed Special Sherbet**

Available with Unfinished or Finished Foot



**2630/416 - 12 oz. Ice Tea Tumbler, Fluted**

Ground Bottom



**2630 - 4½ oz. Colonial Custard or Lemonade, 1-Handle**

Also - 5½ oz. Colonial Custard or Lemonade, 1-handle



**2630 - 6 oz. Candy Jar**

Patent swing cover  
Jar has slip-on top arranged so top is easily taken off



**2630 - Shaker**

Available Tops: No Top, #1 Spun Nickel, #2 Spike Cast Nickel, #11 Aluminum and Pearl Center  
Also available 2630 Sugar Shaker or 2630 Sugar Duster



**2630 - ½ Gallon Blown Tankard, 1-handle, 9" Ht**

Also listed as: 2630 - ½ Gallon Blown Syrup Pitcher, 1-handle, 9" Ht



**2631 - 9¾" Tall Cracker Jar and Cover**

Also listed as: 2631 - 9¾" Tall Crushed Fruit Bowl and Cover



**2651 - 5 oz. Squat Oil, Ground or Drop Stopper**



**2651 - Footed Salver**

Available Sizes:  
9", 4½" Ht  
10", 5½" Ht



**2660/1 - Butter and Cover**

Also available as 4-piece Set Including Butter and Cover, Sugar and Cover, Cream and Spoon



**2660/1 - Cream**

Also available as 4-piece Set Including Butter and Cover, Sugar and Cover, Cream and Spoon



**2660/1 - Spoon**

Also available as 4-piece Set Including Butter and Cover, Sugar and Cover, Cream and Spoon



**2660/1 - Sugar and Cover**

Also available as 4-piece Set Including Butter and Cover, Sugar and Cover, Cream and Spoon



**2660/125 - 5½ oz. Custard or Punch Cup, 1-Handle**



**2660/296 - 6 oz. Squat Oil Bottle, Stopper Version 1**

Drop or Ground Stopper  
Different stoppers were used over the years of production



**2660/394 - 5½ oz. Footed Sherbet or Punch Cup, 1-handle**



**2660 - 7" Square Candy Plate**  
Available Finished or unfinished



**2660 - 7" Square Candy Plate, Turned Up Edge**  
Available Finished or unfinished



**2682 - 7" Candy Tray**  
Also Made in 8" and 9" sizes  
Available Finished or Unfinished



**2683 - Individual Salt, Square Shape**



**2684 - Individual Salt, Round Shape**



**2694 - Oblong Individual Salt Dip**  
Available Plain, Cut Bottom or Cut All Over



**2699/1 - Butter and Cover**  
Also available as 4-piece Set Including Butter and Cover, Sugar and Cover, Cream and Spoon



**2699/1 - Cream**  
Also available as 4-piece Set Including Butter and Cover, Sugar and Cover, Cream and Spoon



**2699/1 - Spoon**  
Also available as 4-piece Set Including Butter and Cover, Sugar and Cover, Cream and Spoon



**2699/1 - Sugar and Cover**  
Also available as 4-piece Set Including Butter and Cover, Sugar and Cover, Cream and Spoon



**2699/125 - 5 oz. Custard or Punch Cup, 1-Handle**



**2699/297 - 8 oz. Oil Bottle, Stopper Version 1**  
Ground or Drop Stopper  
Stopper shapes varied over the years



**2699/338 - 13" Punch Bowl, C Shape (Belled) and Foot, 13" Ht**  
Available with or without foot  
1¼ Gal



**2699/364 - Shaker, Cast Nickel Top**  
Available Tops: No Top, #3 Heavy Cast Nickel, #4 Cone Non-Corrosive, #5 Heavy Silver Plated, #11 Aluminum and Pearl Center, #14 Non-Corrosive Dome, #16 Aluminum Plated Dome, #17 All Glass, #18 Cast Nickel Pourer, #19 Pyramid Silver Plated  
Available Plain, or Cut Top & Bottom



**2719 - 9½" La Touraine Straw Jar and Cover**



**2729/34 - Butter and Cover**  
Available as 4-piece Set Including Butter and Cover, Sugar and Cover, Cream and Spoon  
Renumbered to 2729/1 prior to 1921



**2729/35 - Sugar, 2-handle and Cover**  
Available as 4-piece Set Including Butter and Cover, Sugar and Cover, Cream and Spoon  
Renumbered to 2729/1 prior to 1921



**2729/36 - Cream**  
Available as 4-piece Set Including Butter and Cover, Sugar and Cover, Cream and Spoon  
Renumbered to 2729/1 prior to 1921



**2729/37 - Spoon, 2-handle**  
Available as 4-piece Set Including Butter and Cover, Sugar and Cover, Cream and Spoon  
Renumbered to 2729/1 prior to 1921





2741 - 7 oz. Squat Oil Bottle, Light Blown, Ground or Drop Stopper



2741 - 3 oz. Tall Oil Bottle, Light Blown, Ground or Drop Stopper



2742 - 3 oz. Cologne, Light Blown, Ground or Drop Stopper



2742 - 7 oz. Cologne, Light Blown, Ground or Drop Stopper



2743 - 4 oz. Tall Heavy Square Hotel Oil Bottle, Drop or Ground Stopper  
Available Cut Stopper



2744 - 14 oz. Large Hotel Catsup or Oil Bottle, Ground or Drop Stopper



2750/1 - Butter and Cover

Available as 4-piece Set Including Butter and Cover, Sugar and Cover, Cream and Spoon



2750/1 - Shaker

Available Tops:  
No Top  
#1 Spun Nickel  
#3 Heavy Cast Nickel  
#6 Celluloid Disc and Spun Nickel Ring  
#8 Flat Glass Disc and Cast Nickel Ring  
#10 Flat Glass Disc and Cast Nickel Ring  
#15 Aluminum Plated Dome  
#16 Aluminum Plated



2750/3 - Shaker

Available Tops: No Top, #3 Heavy Cast Nickel, #4 Cone Non-Corrosive, #5 Heavy Silver Plated, #11 Aluminum and Pearl Center, #14 Non-Corrosive Dome, #16 Aluminum Plated Dome, #17 All Glass, #18 Cast Nickel Pourer, #19 Pyramid Silver Plated  
Available Plain, or Cut Top & Bottom



2750/97 - 5 3/4" Tall Celery

Also listed as:  
2750/97 - 5 3/4" Straw Jar, No Cover



2750/125 - 4 oz. Custard or Punch Cup, 1-Handle



2750/215 - Tall Quart Tankard Jug, 7 1/4" Ht

Also Made in 1/2 Gallon, 8 1/4" Ht and 3 Quart sizes



2750/294 - 7 1/2" Candy Tray or Oblong

Also Made in 8 1/2" and 9 1/2" sizes  
Also sold as 2682



2750/296 - Oil Bottle

Made in 5 1/2 and 7 1/2 oz. sizes, Drop or Ground Stopper

No Image Available

2750/392 - 5 oz. Tall Footed Sherbet

Available Finished or Unfinished Foot



2750/423 - 12" Trumpet Vase, Plain Top

Also 2750/423 - 7" Trumpet Vase, Plain Top



2750/424 - 7" Trumpet Vase, Scalloped Top



2750 1/2 - Blown Shaker

Available Tops:  
#3 Heavy Cast Nickel  
#5 Heavy Silver Plated  
#6 Celluloid Disc and Spun Nickel Ring  
#8 Flat Glass Disc and Cast Nickel Ring  
#10 Flat Glass Disc and Cast Nickel Ring  
#11 Aluminum and Pearl Center  
#15 Aluminum Plated Dome  
#16 Aluminum Plated



2752 - 6 1/2 oz. Large Restaurant Oil Bottle, Ground or Drop Stopper

Later listed as 2752 - 8 oz. Large Restaurant Squat Oil Bottle, Ground or Drop Stopper



2760 - 7 oz. Squat Oil Bottle and Stopper Version 1

Ground or Drop Stopper



Search results - "feb22"

Main Menu

- [Home](#)
- [Login](#)
- [Album list](#)
- [Search](#)



2785 - 8½" Footed Banquet Bowl



2800/9 - 5 oz. Tall Oil Bottle, Ground or Drop Stopper  
Also available: 2800/9 - 4 oz. Tall Oil, 2800/9 - 2 oz. Tall Oil



2800/10 - 6 oz. Tall Oil Bottle, Stopper Version 1  
Ground or Drop Stopper



2800/17 - Shaker  
Available Tops: No Top, #3 Heavy Cast Nickel, #4 Cone Non-Corrosive, #5 Heavy Silver Plated, #11 Aluminum and Pearl Center, #14 Non-Corrosive Dome, #16 Aluminum Plated Dome, #17 All Glass, #18 Cast Nickel Pourer, #19 Pyramid Silver Plated  
Available Plain, or Cut Top & Bottom



2800/31 - 5½ oz. or 6 oz. Tall Footed Sherbet



2800/47 - 4 oz. Footed Sherbet, A Shape (Round)  
Available 2800/48 - 4½ oz. Footed Sherbet, C Shape (Belled)  
Available 2800/49 - 4½ oz. Footed Sherbet, E Shape (Crimped)



2800/52 - 5 oz. Footed Sherbet, A Shape (Round)  
Also Available:  
2800/50 - 3 oz. Footed Sherbet, A Shape (Round)  
2800/51 - 3 oz. Footed Sherbet, F Shape (Cupped)  
2800/53 - 5½ oz. Footed Sherbet, C Shape (Belled)  
2800/54 - 5½ oz. Footed Sherbet, E Shape (Crimped)



2800/55 - 6 oz. Footed Sherbet



2800/56 - 6 oz. Footed Sherbet



2800/57 - 6 oz. Footed Sherbet  
Available Finished or Unfinished Foot



2800/68 - 39 oz. Ice Jug and Cover  
Also sold without cover



2800/93 - Ice Cream Cone Holder  
Also listed as 2800/93½ - Ice Cream Cone Holder



2800/109 - 8" Candlestick  
Available as 2800/109 - 8" Candlestick, E Wedgewood listed as Wedgewood No. 102



2800/115 - 8" Trumpet Vase



2800/119 - Sweet Pea Vases, Squat Version  
Available Sizes:  
4½"  
6"  
8"  
2800/119 - 6" Squat Sweet Pea Vase, 4½" Base Dia



2800/119 - 8" Sweet Pea Vase  
8" Ht, 8" Top Width, 3¼" Bottom Width



2800/144 - 3 oz. Marmalade and Cover  
Also available as 2800/144 - 3 oz. Mustard and Cover



2800/153 - 7 oz. Marmalade and Cover



2800/165 - 5 oz. Footed Sherbet  
Originally U. S. No. L74  
First sold by Cambridge as No. 771  
Available Finished or Unfinished Foot



2800/167 - 6½ oz. Footed Sherbet  
Available Finished or Unfinished Foot

Search results - "feb22"

Main Menu

- [Home](#)
- [Login](#)

- [Album list](#)
- [Search](#)



2800/168 - 4½ oz. Footed Sherbet, Saucer Foot



2800/173 - 4 oz. Tall Oil Bottle, Ground or Drop Stopper

Later listed as 2800/9



2800/174 - 3 oz. Tall Oil Bottle, Ground or Drop Stopper

Later listed as 2800/9 - 2 oz. Tall Oil



2800/193 - 7" Basket  
7" Ht, 4" Dia



2800/209 - 9" Non-splash Auto Vase, Cut 2187



2800/215 - U.S.N. 5 oz. Marmalade or Mustard and Cover



2800/219 - 3½ oz. Footed Sherbet

Available Finished or Unfinished Foot



2800/220 - 9" Basket and 2899 - 2¼" Perforated Flower Block  
9" Ht, 4" Dia



2800/221 - 9" Basket with 2899 - 2¼" Perforated Flower Block  
9" Ht, 6" Dia



2800/222 - 12" Basket and 2899 - 3½" Perforated Flower Block  
12" Ht, 6" Dia



2800/223 - 12" Basket with 2899 - 3½" Perforated Flower Block  
12" Ht, 8" Dia



2800/224 - 9" Basket without Seat and Perforated Flower Block  
9" Ht, 4" Dia



2800/225 - 12" Basket without Seat and Perforated Flower Block  
12" Ht, 6" Dia



2800/228 - 5" x 8" Oval Basket  
8" Ht, 5" Dia



2800/230 - 5" x 9" Oval Basket  
9" Ht, 5" Dia



2800/231 - 11" Basket  
11" Ht, 5¾" Dia  
Made from 12 oz. ice tea



2814 - 2½ oz. Clock Candy Container  
Cork lined metal cap



2814 - 2½ oz. Clock Candy Container (Crystal)



2834 - 5½ oz. Figured Horn Bottle  
Powder Horn Shape, Standard Cork closure  
Furnished with Cord only  
Glass stopper available



2838 - 3 oz. Cambridge Automatic Revolver Candy Container  
Embossed "Cambridge Automatic"  
Cork lined metal cap

Search results - "feb22"

Main Menu

- [Home](#)
- [Login](#)
- [Album list](#)
- [Search](#)



**2842 - 1½ oz. Small Revolver Candy Container**

Embossed Native American Chief on handle, Saddled Horse on reverse  
Cork lined metal cap



**2843 - 5½ oz. Large Revolver Candy Container**



**2860/1 - Butter or Cheese and Cover**

Available 4-piece Set Including Butter and Cover, Sugar and Cover, Cream and Spoon  
Sold as Lexington #5 in 1930s



**2860/1 - Cream**

Available 4-piece Set Including Butter and Cover, Sugar and Cover, Cream and Spoon



**2860/1 - Spoon**

Available 4-piece Set Including Butter and Cover, Sugar and Cover, Cream and Spoon



**2860/1 - Sugar, 2-handle and Cover**

Available 4-piece Set Including Butter and Cover, Sugar and Cover, Cream and Spoon



**2860/10 - Berry Cream, Polished Bottom**

Sold as Lexington #7 in 1930s



**2860/10 - Berry Sugar, 2-handle, Polished Bottom**

Sold as Lexington #7 in 1930s



**2860/267 - 4" Nappy, A Shape (Round)**

Also 2860/267 - 4" Nappy, Unfinished



**2860/297 - 7½ oz. Tall Oil Bottle, Stopper Version 1**

Drop or Ground Stopper



**2869 - Horseradish, Ground Stopper**

Available Blank, Ground Stopper; or Ground Stopper, Cut 3080



**2870 - Small Cologne, Ground Stopper, Cut 3080**

Also available 2870 - Small Cologne, Blank, Ground Stopper



**2879 - Large Cologne, Ground Stopper, Cut 3080**

Also available 2879 - Large Cologne, Blank, Ground Stopper



**2909 - 5 oz. Custard, 1-Handle, E401 Old Fashioned Grape**



**2912 - Small Cologne, Ground Stopper**

Available Cut Stopper  
Later listed as #1340  
5¾" Ht



**2916 - Small Cologne, Ground Stopper**

Available Blank, Ground Stopper OR Ground Stopper and Cut Flower; OR Ground Stopper, Cut Stopper & Cut Flower



**2917 - Medium Cologne, Ground Stopper**

Available Blank, Ground Stopper OR Ground Stopper and Cut Flower; OR Ground Stopper, Cut Stopper & Cut Flower



**2918 - Large Cologne, Ground Stopper**

Available Blank, Ground Stopper OR Ground Stopper and Cut Flower; OR Ground Stopper, Cut Stopper & Cut Flower



**2921 - 7 oz. French Dressing Bottle, Ground Stopper**

Sold unlettered or lettered "Oil and Vinegar"



**2933 - Salt Dip**

Available Cut Top & Bottom or Cut Top & Bottom, Cut Flute

Search results - "feb22"

Main Menu

- [Home](#)
- [Login](#)

- [Album list](#)
- [Search](#)



**2937 - Blown Finger Bowl, Optic**

Listed with 7606 stemware  
Available D/145 Gold Encrusted  
Minton Border on 2937 - Finger  
Bowl & 7606 - 7" Finger Bowl Plate



**2943 - 7½" 3-footed Chinese Lily Bowl with 2899 - 4" Flower Block**

Also with 2899 - 3" Flower Block



**2960/1 - Cream**

Available 4-piece Set Including  
Butter and Cover, Sugar and Cover,  
Cream and Spoon  
Originally sold as 2960/4



**2960/1 - Butter and Cover**

Available 4-piece Set Including  
Butter and Cover, Sugar and Cover,  
Cream and Spoon  
Originally sold as 2960/1



**2960/1 - Spoon**

Available 4-piece Set Including  
Butter and Cover, Sugar and Cover,  
Cream and Spoon  
Originally sold as 2960/3



**2960/1 - Sugar and Cover**

Available 4-piece Set Including  
Butter and Cover, Sugar and Cover,  
Cream and Spoon  
Originally sold as 2960/2



**2960/215 - Tall Quart Jug, Pressed Handle**

Originally sold as 2960/10



**2960/267 - 4" Nappy, Unfinished**

Originally sold as 2960/28



**2960/268 - 8¼" Nappy, A Shape (Round)**

Originally sold as 2960/5  
Available 4¾", 6¼" and 7¼" sizes,  
same new number.



**2960/269 - 8¾" Nappy, C Shape (Belled)**

Originally sold as 2960/6  
Available 4¾", 6½" and 7½" sizes,  
same new number



**2960/297 - 7½ oz. Tall Oil, Stopper Version 1**

Originally sold as 2960/12  
Ground or Drop Stopper



**2960/311 - 6½" Oval Bowl**

Also made in 7½" size



**2966 - Small Cologne, Ground Stopper, Cut 2125**

Available Blank, Ground Stopper OR  
Ground Stopper and Cut Flower;  
OR Ground Stopper, Cut Stopper &  
Cut Flower



**2967 - Large Cologne, Ground Stopper, Cut 2125**

Available Blank, Ground Stopper OR  
Ground Stopper and Cut Flower;  
OR Ground Stopper, Cut Stopper &  
Cut Flower



**2971 - 6" Finger Bowl Plate, Needle Etching 272**

Available Needle Etching 309,  
Needle Etching 310



**2973 - 7 oz. French Dressing Bottle, Ground Stopper**

Sold unlettered or lettered "Oil and  
Vinegar"



**3000 - 4½ Pint Jug, Optic, E521**

Available Needle Etching 322,  
Needle Etching 317



**3020 - 5 oz. Café Parfait, Optic**

Available D/145 Gold Encrusted  
Minton Border  
Available Needle Etching 322,  
Needle Etching 317



**3020 - 5 oz. Claret, Optic, Needle Etching 322**

Also available Needle Etching 317



**3020 - 3½ oz. Cocktail, E514/515**

Also available D/145 Gold  
Encrusted Minton Border  
Available Needle Etching 322,  
Needle Etching 317

Search results - "feb22"

Main Menu

- Home
- Login

- Album list
- Search



**3020 - 10 oz. Goblet**

Available 9 oz.  
Available D/145 Gold Encrusted  
Minton Border



**3020 - 3 oz. Wine, Optic,  
Needle Etching 322**

Also available Needle Etching 317



**3111 - 4½ oz. Claret**

Available D/1049 Gold Encrusted  
Bordero Wide Band



**3111 - 3 oz. Cocktail**

Available D/1049 Gold Encrusted  
Bordero Wide Band  
6" Ht



**3111 - 5¾" Low Compot**

Available E Rose Point  
Available D/1049 Gold Encrusted  
Bordero Wide Band



**3111 - 1 oz. Cordial**

Available D/1049 Gold Encrusted  
Bordero Wide Band  
5" Ht



**3111 - Finger Bowl and Plate**

Available D/1049 Gold Encrusted  
Bordero Wide Band



**3111 - 10 oz. Goblet**

Available D/1049 Gold Encrusted  
Bordero Wide Band  
8¼" Ht



**3111 - 4½ oz. Oyster  
Cocktail**

Available D/1049 Gold Encrusted  
Bordero Wide Band  
4" Ht



**3111 - 7 oz. Low Sherbet**

Available D/1049 Gold Encrusted  
Bordero Wide Band



**3111 - 7 oz. Tall Sherbet**

Available D/1049 Gold Encrusted  
Bordero Wide Band  
6¼" Ht



**3111 - 3 oz. Footed Tumbler**

Available D/1049 Gold Encrusted  
Bordero Wide Band  
4¼" Ht



**3111 - 5 oz. Footed Tumbler**

Available D/1049 Gold Encrusted  
Bordero Wide Band  
5¼" Ht



**3111 - 10 oz. Footed Tumbler**

Available D/1049 Gold Encrusted  
Bordero Wide Band



**3111 - 12 oz. Footed Tumbler**

Available D/1049 Gold Encrusted  
Bordero Wide Band  
7¼" Ht



**3111 - 2½ oz. Wine**

Available D/1049 Gold Encrusted  
Bordero Wide Band  
6¼" Ht



**3114 - 10 oz. Goblet, D/1046  
Gold Bands (Crystal)**



**3200 - 6" High Footed  
Compot, Cut 2153 "Wild  
Rose"**



**3200 - 7½" Fern Dish, Cut  
2153 "Wild Rose"**

No Liner - To fit Standard Liner  
Nickel Plated Liner available



**3200 - 6" Shallow Nappy, Cut  
2153 "Wild Rose"**

Also 3200 - 7" Shallow Nappy



Search results - "feb22"

Main Menu

- [Home](#)
- [Login](#)

- [Album list](#)
- [Search](#)



**3200 - 6" Olive, 1-handle, Cut 2153 "Wild Rose"**

Also 3200 - 7" Olive, 1-handle



**3200 - 1/2 Gallon Tankard, 1-handle, Cut 2153 "Wild Rose"**



**3200 - 10" Cylinder Vase, Cut 2153 "Wild Rose"**

4 1/4" Dia



**3200 - 12" Cylinder Vase, Cut 2153 "Wild Rose"**

4 5/8" Dia



**3200 - 9" Square Vase, Cut 2153 "Wild Rose"**

Width 3 3/8"



**3400/55 - 5" Cream Soup and 6 1/2" Saucer**

Includes 3400/55 - 5" Cream Soup and 3400/55 - 6 1/2" Cream Soup Saucer

Available E752 Diane, E754 Portia, E762 Elaine



**3400/152 - 76 oz. Doulton Jug**

Also Available Crystal with Amber, Forest Green, Royal Blue, or Amethyst Handle

Also Available 3400/152/115 7-piece Ice Tea Set, Includes 3400/152 - 76 oz. Doulton Jug and 6 3400/115 - 13 oz. Tumblers

Also Available 3400/152/115 9-piece Ice Tea Set, Includes 3400/152 - 76 oz. Doulton Jug and 8 3400/115 - 13 oz. Tumblers



**4001 - Small Cologne, Ground Stopper**

Available Blank, Ground Stopper OR Ground Stopper and Cut Flower; OR Ground Stopper, Cut Stopper & Cut Flower



**4002 - 20 oz. Night Bottle and Tumbler**

Available Needle Etching 218, Needle Etching 311, Needle Etching 319 7" Ht



**4002 - Large Cologne, Ground Stopper**

Available Blank, Ground Stopper OR Ground Stopper and Cut Flower; OR Ground Stopper, Cut Stopper & Cut Flower



**4003 - Horseradish, Ground Stopper**

Available Blank, Ground Stopper; or Ground Stopper, Cut Flower; or Ground Stopper, Cut Flower; or Ground Stopper, Cut Bar



**4004 - 5" Compot, Cut 4072**

Available Needle Etching 218, Needle Etching 311, Needle Etching 319



**4004 - 6" Tall Compot**

Available E Marjorie 6 1/2" Ht



**4022/42 - 11" Basket, Plain Handle, Cut Chrysanthemum**

17" Ht



**4022/215 - 1/2 Gallon Jug or Tankard, 1-handle, Cut Chrysanthemum**



**4030/338 - 8" Punch Bowl and Foot, Cut Hibiscus**

Consists of: 4030/62 - 8" Bowl and 5" Footed Jelly Compot or Bowl, Cut Hibiscus



**4030/338 - 9" Punch Bowl and Foot, Cut Hibiscus**

Consists of: 4030/62 - 9" Bowl and 5" Footed Jelly Compot or Bowl, Cut Hibiscus



**4060 1/2/415 - 8 oz. Tumbler, Plain Buttons**

Also available 4060/415 - 8 oz. Tumbler, Plain Buttons Available snap or cut bottom



**Chelsea 36 - 7 oz. Soda Fountain Tumbler, Protected Edge**

Also made Chelsea 37 - 5 1/2 oz. Soda Fountain Tumbler, Protected Edge



**Chelsea 107 - 8 oz. Marmalade, Jam or Mustard Jar and Cover**

Chelsea 107 Cover also fits No. 130 - Marmalade

Search results - "feb22"

Main Menu

- Home
- Login

- Album list
- Search



Chelsea 107 - Marmalade, Jam or Mustard Cover



Chelsea 108 - Jam, Marmalade or Mustard Jar, Cover and Plate



5000 - 4" Footed Nappy  
Available Needle Etching 319



5000 - 4" Footed Nappy, E Marjorie

Also available:

- 5000 - 5" Footed Nappy, E Marjorie
- 5000 - 6" Footed Nappy, E Marjorie
- 5000 - 7" Footed Nappy, E Marjorie



5000 - 5" Footed Nappy, Optic, Needle Etching 322  
Also available Needle Etching 317



5000 - 6" Footed Nappy  
Available Needle Etching 218, Needle Etching 311, Needle Etching 319



5000 - 6" Footed Nappy, E405  
Also 5000 - 7" Footed Nappy, E405



5000 - 6" Footed Nappy, E Martha  
Also 5000 - 7" Footed Nappy, E Martha



5000 - 7" Low Footed Nappy, E Dresden

Listed as Dresden No. 52  
Also available as Adams No. 52  
Also available E401, Old Fashioned Grape, Needle Etching 218, Needle Etching 311, Needle Etching 317, Needle Etching 319



5000 - 7" Low Footed Nappy, E Wedgewood  
Listed as Wedgewood No. 52



5000 - 8" Low Footed Nappy, E Marjorie  
Also available as Adams No. 52½



6011 - 6" Vase, Metal Holder, D/1041 Gold Encrusted Rose Point (Crown Tuscan)



7390 - 5 oz. Café Parfait  
Available Needle Etching 311, Needle Etching 218



7390 - 4 oz. Claret, E405  
Available Needle Etching 311, Needle Etching 218



7390 - 3 oz. Cocktail  
Available Needle Etching 311, Needle Etching 218



7390 - 1 oz. Pousse Café  
Available Needle Etching 311



7390 - 5 oz. Low Footed Sherbet  
Available Needle Etching 311, Needle Etching 218



7390 - 5 oz. Tall Footed Sherbet, Long Stem  
Also available 7390 - 6 oz. Tall Footed Sherbet, Short Stem



7390 - 5 oz. Tall Footed Sherbet, Needle Etching 311  
Available Needle Etching 218



7516 - 5 oz. Café Parfait  
Actual number 3450  
Available Needle Etching 272, Needle Etching 310

Search results - "feb22"

Main Menu

- [Home](#)
- [Login](#)
- [Album list](#)
- [Search](#)



**7516 - 4½ oz. Claret**  
Actual number 7609



**7516 - 3 oz. Cocktail**  
Available as 7516 - 3 oz. Cocktail,  
E Wedgewood, listed as  
Wedgewood No. 105



**7516 - 5 oz. Footed Sherbet**  
Available Needle Etching 310  
3¼" Ht



**7516 - 5 oz. Tall Footed Sherbet**  
Available Needle Etching 310  
4¾" Ht



**7516 - 3 oz. Wine, E408**  
Available as 7516 - 3 oz. Wine, E  
Wedgewood, listed as Wedgewood  
No. 106



**7550 - 5" Almond, E401 Old Fashioned Grape**  
Also available in individual almond size



**7550 - 5" Blown Almond Stand, Plate Etching 401 "Grape Vine"**  
Also made in individual almond size



**7550 - 5" Blown Almond Stand or Footed Bonbon**



**7605 - 6" Footed Bowl, E405**  
Available Needle Etching 218,  
Needle Etching 311, Needle  
Etching 319



**7606 - Finger Bowl and 7" Finger Bowl or Salad Plate, E Marjorie**



**7606 - 7" Finger Bowl or Salad Plate, E Marjorie**  
Available D/145 Gold Encrusted  
Minton Border



**7606 - 6 oz. Low Footed Sherbet or Fruit Salad, Optic, E Cleo**



**7606 - 1½ oz. Whiskey Tumbler, Medium Sham, E Marjorie**  
Also available 7606 - 3 oz. Whiskey Tumbler



**7606 - 8 oz. Tall or Ale Tumbler, E Marjorie**  
Also available D/145 Gold Encrusted Minton Border



**7611 - 7 oz. Egg Cup, Optic**  
Also listed as 7911 - 7 oz. Egg Cup, Optic



**7801 - 2½ oz. Cocktail, Needle Etching 309**  
Also available 7801 - 3 oz. Cocktail, Needle Etching 309



**7801 - 1 oz. Cordial**  
Available Needle Etching 309  
4" Ht



**7810 - Finger Bowl and Plate, E514/515**  
Available 7810 - Finger Bowl and 2971 Finger Bowl Plate, Needle Etching 218, Needle Etching 311, Needle Etching 317, Needle Etching 322



**7810 - Blown Finger Bowl**  
Available D/145 Gold Encrusted Minton Border  
Available 7810 - Blown Finger Bowl, E Wedgewood listed as Wedgewood No. 88  
Also available as Adams No. 88  
Also Available with 7810 - 6" Finger Bowl Plate, E Wedgewood listed as Wedgewood No. 92  
Also available as Adams No. 92



**7810 - Blown Finger Bowl, Optic, E521**  
Also 7810 - Blown Finger Bowl and Plate, Optic, E521

Search results - "feb22"

Main Menu

- [Home](#)
- [Login](#)

- [Album list](#)
- [Search](#)



**7858 - 5 oz. Café Parfait**  
Available Needle Etching 319



**7858 - 5½ oz. Tall Champagne**  
Available E401 Old Fashioned Grape, Needle Etching 319



**7858 - 6½ oz. Claret, E401 Old Fashioned Grape**  
Available Needle Etching 319  
Also 7858 - 4½ oz. Claret, E401 Old Fashioned Grape, Available Needle Etching 319



**7858 - 3½ oz. Cocktail, E401**  
Available Needle Etching 319



**7858 - 1 oz. Cordial**  
Available Needle Etching 319



**7858 - 3 oz. Crème de Menthe**  
Available Needle Etching 319



**7858 - 6 oz. Fruit Salad**  
Available Needle Etching 218, Needle Etching 311, Needle Etching 319



**7858 - 10 oz. Goblet**  
Available Needle Etching 310, D/455 Gold Edge, D/460 Wedding Band



**7858 - 1 oz. Pousse Café**  
Available Needle Etching 319



**7858 - 5 oz. Low Footed Sherbet**  
Available Needle Etching 310, D/455 Gold Edge, D/460 Wedding Band



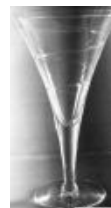
**7858 - 5 oz. Tall Footed Sherbet, Optic**  
Available Needle Etching 310, D/455 Gold Edge, D/460 Wedding Band



**7858 - 4 oz. Wine, Optic**  
Available Needle Etching 310, D/455 Gold Edge, D/460 Wedding Band



**7858 - 4 oz. Wine, E401 Old Fashioned Grape**  
Available Needle Etching 319  
Also 7858 - 2 oz. Wine, E401 Old Fashioned Grape, Available Needle Etching 319



**7966/2 - 10 oz. Tall Goblet, R. C. Eng. 1081 Rondo (Crystal)**  
7½" Ht



**8023 - 10 oz. Footed Ice Tea Tumbler**  
Also made:  
8023 - 9 oz. Footed Tumbler  
8023 - 10 oz. Handled and Footed Ice Tea Tumbler



**8401 - 5 oz. Tumbler, E408**  
Available Needle Etching 272, Needle Etching 309, Needle Etching 310



**8401 - 8 oz. Tumbler**  
Available Needle Etching 309



**8401 - 10 oz. Tumbler**  
Available Needle Etching 309



**8401 - 12 oz. Tumbler**  
Available Needle Etching 272, Needle Etching 309, Needle Etching 310



**8701 - 18 oz. Tumbler**  
Also available: 8701 - 21 oz. Tumbler

Search results - "feb22"

Main Menu

- [Home](#)
- [Login](#)

- [Album list](#)
- [Search](#)



**8851 - 1½ oz. Half Sham Whiskey Tumbler, E Martha**  
Available Needle Etching 319



**8851 - 9 oz. Table Tumbler, Needle Etching 288**  
Touraine Line accessory



**8858 - 3 oz. Tumbler**  
Available Needle Etching 319



**8858 - 5 oz. Tumbler**  
Available Needle Etching 218, Needle Etching 311, Needle Etching 319, Needle Etching 310, D/455 Gold Edge, D/460 Wedding Band



**8858 - 8 oz. Tumbler**  
Available Needle Etching 319



**8858 - 9 oz. Tumbler**  
7858 Line Accessory



**8858 - 9 oz. Tumbler, Needle Etching 311**  
Available Needle Etching 319



**8858 - 9 oz. Table Tumbler, E Martha**  
Available Needle Etching 310, D/455 Gold Edge, D/460 Wedding Band



**8858 - 10 oz. Tumbler**  
Available Needle Etching 218, Needle Etching 311, Needle Etching 319



**8858 - 10 oz. Tumbler, 1-Handle, E405**  
Also available: 8858 - 12 oz. Ice Tea Tumbler, 1-Handle



**8858 - 12 oz. Tumbler**  
Available Needle Etching 218, Needle Etching 288, Needle Etching 311, Needle Etching 319, Needle Etching 310, D/455 Gold Edge, D/460 Wedding Band



**8858 - 14 oz. Tumbler**  
Available Needle Etching 319



**9002 - 10 oz. Tumbler**  
Also 9032 - 9 oz. Tumbler, Shammed  
Also 9002 - 9 oz. Tumbler



**9002 - 20 oz. Tumbler**  
Also 9002 - 18 oz. Tumbler



**9003 - 10 oz. Tumbler**  
Also 9003 - 8 oz. Tumbler



**9022 - 8 oz. Tumbler**  
Also 9022 - 6 oz. Tumbler



**9415 - 9 oz. Blown Table Tumbler, Needle Etching 315**  
Available Needle Etching 319



**4003 - Horseradish, Ground Stopper, Cut Flower**

No Image Available

**D/145 - Minton Border, Gold Encrusted**  
[View Examples](#)  
Also available on two No. 316 - 65 oz. Jugs (Optic and Plain), not illustrated



**E779 (Hanging Urn)**  
D/1055 Wide Gold Encrusted Border  
D/1056 E779 with Two Gold Bands Border  
D/1057 E779 with Five Gold Bands Border  
[View Examples](#)



Search results - "feb22"

Main Menu

- [Home](#)
- [Login](#)

- [Album list](#)
- [Search](#)



**Martha Washington 42 - Cup, 1-Handle and 5 3/4" Saucer**  
Victorian No. 42 - Footed Custard, 1-Handle and Saucer



**Pristine 6 - 6 oz. Low Sherbet**  
Available D/450 Astoria, D/1050 Gold Encrusted Laurel



**Pristine 7 - 5 oz. Oyster Cocktail**  
Available E Rose Point  
Available D/1050 Gold Encrusted Laurel  
4 1/2" Ht



**Pristine 8 - 3 1/2 oz. Cocktail, D/450 Astoria (Crystal) ®**  
Available D/1050 Gold Encrusted Laurel



**Pristine 10 - 4 1/2 oz. Claret**  
Available E Rose Point  
Available D/1050 Gold Encrusted Laurel



**Pristine 10 - 4 1/2 oz. Claret**  
Available D/450 Astoria, D/1050 Gold Encrusted Laurel



**Pristine 15 - 3/4 oz. Brandy**  
Available D/450 Astoria, D/1050 Gold Encrusted Laurel



**Pristine 18 - 2-piece Cocktail Icer**  
Available D/450 Astoria, D/1046 Gold Bands, D/1050 Gold Encrusted Laurel



**Pristine 26 - 10 oz. Footed Tumbler**  
Available D/450 Astoria, D/1050 Gold Encrusted Laurel



**Pristine 28 - 5 oz. Footed Tumbler**  
Available D/450 Astoria, D/1050 Gold Encrusted Laurel



**Pristine 64 - Finger Bowl and Pristine 65 - Finger Bowl Plate**  
Available D/450 Astoria, D/1050 Gold Encrusted Laurel



**Pristine 187 - 2-piece Grapefruit or Salad Icer**  
Available D/450 Astoria, D/1054 Laurel Gold Edge



**Pristine 281 - 7 1/2" Plate with Seat with Pristine 280 - Mayonnaise and Ladle**  
Available D/450 Astoria, D/1050 Gold Encrusted Laurel



**Pristine 498 - 7" Candlestick**  
Available D/450 Astoria, D/1054 Laurel Gold Edge



**Pristine 507 - 7 1/2" Candlestick with #25 Bobeche & #4 Prisms**  
Available D/450 Astoria, D/1054 Laurel Gold Edge



**Stratford 41 - 5" Squat Vase, Plain Edge**



**Stratford 41 1/2 - 5" Squat Vase, Plain Edge**



**Stratford 42 - 5" Squat Vase, Spike Edge**



**Stratford 43 - 5" Squat Vase, Spike Edge**



**Stratford 64 - 10" Oval Bowl, Plain Edge**  
Also  
Stratford 63 - 9" Oval Bowl, Plain Edge  
Stratford 62 - 8" Oval Bowl, Plain Edge  
and as a Nesting Set of 3 Bowls

Search results - "feb22"



**Stratford 67 - 10" Oval Bowl, Spike Edge**

Also  
Stratford 66 - 9" Oval Bowl, Spike Edge  
Stratford 65 - 8" Oval Bowl, Spike Edge  
as a Set of 3 Nesting Bowls



**Stratford 102 - Oval Footed Individual Salt, 2-Handle, Spike Edge**

Also Stratford 103 - Plain Edge version



**2 oz. Irishman's Head Candy Container**

Cork lined metal cap



**2 1/2 oz. Rabbit Candy Container**

Cork lined metal cap



**2 1/2 oz. Rabbit Candy Container (Crystal)**



**3 oz. Tipperary Hat Candy Container**

Cork lined metal cap



**7 oz. "U. S. N. Dreadnaught" Boat Candy Container**

Cork lined metal cap



**U. S. Navy Kitchen Shaker, Large**

Available Tops: No Top, #1 Spun Nickel Top, #3 Heavy Cast Nickel, Nickel Top, #3 Heavy Cast Nickel, #6 Celluloid Disc and Spun Nickel Ring



**U. S. Navy Kitchen Shaker, Small**

Available Tops: No Top, #1 Spun Nickel Top, #3 Heavy Cast Nickel, Nickel Top, #3 Heavy Cast Nickel, #6 Celluloid Disc and Spun Nickel Ring



**U. S. Navy Kitchen Vinegar Bottle**

Available with Porcelain Tube for Vinegar



**Tall Kitchen Vinegar Bottle**

Available with Porcelain Squirt Tube for Vinegar

891 files on 45 page(s) [1](#) [22](#) [23](#) [24](#) [25](#) [26](#) [27](#) [28](#) [29](#) [30](#) [31](#) [32](#) [33](#) [34](#) [35](#) [36](#) [37](#) [38](#) [39](#) [40](#) [41](#) [42](#) [43](#) [44](#) [45](#)

Powered by Coppermine Photo Gallery

Images and content copyright 2008-2022 by Miami Valley Study Group (MMSG).  
Use of any images or content without written permission is prohibited.

Main Menu

- [Home](#)
- [Login](#)

- [Album list](#)
- [Search](#)