

Search results - " "

Main Menu

- [Home](#)
- [Login](#)
- [Album list](#)
- [Search](#)



No. 2 - 9" Soda Fountain Crushed Fruit Bowl and Cover, 4-compartment



No. 3 - 5 oz. Footed Sherbet, Optic



No. 4 - 2 Pound Egyptian Candy Jar
Original 1903-1905-1907
Number & Description Shown.



No. 7 - 4 Pound Round Candy Jar and Cover



No. 8 - 3 Pound Squat Candy Jar, Tall Shape



No. 12 - 2 3/4 oz. Footed Sherbet



No. 15 1/2 - 6 1/4 oz. Sherbet, Belled, Saucer Foot, Optic



No. 18 - Display Jar, Patented Hinge for Cover, Closed Cover



No. 34 - 3 Gallon Footed Display Globe



No. 45 - Tall Display Jar



No. 46 - 48 oz. Jug, Paste Mold
Also No. 111 - 48 oz. Jug, Iron Mold



No. 51 1/2 - 48 oz. Jug, Paste Mold



No. 51 1/2 - 64 oz. Jug, Paste Mold



No. 53 - 54 oz. Jug, Paste Mold
See also No. 108, Iron Mold version.



No. 57 - 9 oz. Table Tumbler



No. 106 - 66 oz. Jug and Cover, Unidentified Etching, Gold Band Overlay (Amber)



No. 107 - 66 oz. Jug and Cover, E518 Tulip (Emerald)



No. 147 - 8 oz. Marmalade and Cover, E Rose Point (Crystal)



No. 150 - 9 oz. Tumbler, Plain Bottom



No. 200/16 - 6" Full Finish Candlestick, Marigold Carnival (Crystal)
Same as 2862 - 6 1/4" Candlestick.

Search results - " "

Main Menu

- [Home](#)
- [Login](#)

- [Album list](#)
- [Search](#)



No. 200/34 - 9½" Candlestick (Crystal)
Same as No. 3 - 9" Crucifix Candlestick.

No Image Available

D/932

No Image Available

D/939

No Image Available

D/982

No Image Available

D/994

No Image Available

D/1046 Gold Bands

No. 609 - Glass Salad Fork, Version 2

No. 609 - Glass Salad Spoon, Version 2



669 - 8¼" Salver (Crystal)
669 Line. aka Feather. Produced by Cambridge Glass 1902-03, McKee Glass 1896-1901, Beatty-Brady Glass 1903. Cordial, Goblet, and Wine only were listed in the 1903 Cambridge Catalog.



No. 685 - Fruehling & Schultz Desiccating Jar, 9½" x 8" Bottom (Crystal)



No. 685 - Fruehling & Schultz Desiccating Jar and Cover, 9½" x 8" Bottom (Crystal)



No. 694 - 8 oz. Soda Fountain Goblet, Wire Optic



No. 694 - 10 oz. Soda Fountain Goblet, Wire Optic



No. 694 - 13 oz. Soda Fountain Goblet, Wire Optic



No. 695 - 5 oz. Low Footed Sherbet



No. 695 - 5 oz. Tall Footed Sherbet



No. 705 - Dappen's Glass, Full Fire Polished (Golden Showers)



No. 705 - Dappen's Glass, Full Fire Polished (Madeira)



No. 705 - Dappen's Glass, Full Fire Polished (Opal)



No. 964 - 5 oz. Soda Fountain Goblet

Search results - " "

Main Menu

- [Home](#)
- [Login](#)
- [Album list](#)
- [Search](#)



No. 964 - 8 oz. Soda Fountain Goblet



1066 - Oval Cigarette Holder, Ash Tray Ebony Foot (Crown Tuscan, Ebony)



1115 - 11 oz. Bitter or Phosphate Bottle and Tube
Original 1903-1905-1907 Number & Description Shown Originally McKee No. 389.



1116 - 9 oz. Bitter or Phosphate Bottle and Tube
Original 1903-1905-1907 Number & Description Shown Originally McKee No. 983.



1203 - 1 1/2 oz. Tumbler, Shammed (Amber)



1203 - 5 oz. Tumbler (Amber)



1203 - 7 oz. Old Fashioned Cocktail, Shammed (Amber)



1238 Sugar Shaker, Star Bottom
Same as 1237 - Sugar Shaker with Star Bottom.



1400 - 1 oz. Cordial (Madeira)



1402/10 - 3 oz. Cocktail, E Catawba (Crystal)



1402/12 - 2 1/2 oz. Wine (Royal Blue)



1402/35 - 12 oz. Handled Stein (Amber)



1402/35 - 12 oz. Handled Stein (Amethyst)



1402/35 - 12 oz. Handled Stein (Crystal)



1402/35 - 12 oz. Handled Stein (Forest Green)



1402/35 - 12 oz. Handled Stein (Royal Blue)



1402/50 - 74 oz. Tankard Jug (Amber, Crystal)



1402/65 - 4 1/2" Tall Comport (Carmen)



1402/76 - 5" Candlestick (Crystal)



1402/100 - 12 oz. Goblet, E762 Elaine (Crystal)

Search results - " "

Main Menu

- [Home](#)
- [Login](#)
- [Album list](#)
- [Search](#)



1402/100 - 1 oz. Cordial, D/1007-8 Gold Overlay Decoration (Royal Blue, Crystal)



1402/127 - 12½" Bowl, Flat Rim, Platinum Trim (Royal Blue)



1630 - 10 oz. Tall Tumbler, D/120 (E527) Rose Gold Band Overlay (Amber)



1630 - 12 oz. Tumbler, Unidentified Etching, Gold Band Overlay (Amber)



1917/88 - ½ Pound Candy Jar and Cover, Optic Band (Mulberry)



1917/267 - 8" Nappy



1917/267 - 9" Nappy



No. 1 - Keg Set (Amber, Ebony)



No. 1 - Keg Set Stand (Ebony)



No. 14 - 10" Shallow Cupped Bowl, #4 Ebony Foot (Ivory)



No. 32 - 10⅝" Bowl, Rolled Edge, E625 Green Band Overlay, Bright Highlights (Azurite)



No. 59 - 6" Diameter Tall Compot, Cupped (Helio)



No. 79 - 8" Vase (Aurora) Old No. 2357 - 8" Vase.



No. 80 - 6" Vase (Primrose) Old No. 2357 - 6" Vase.



No. 81 - 12" Vase, Unnamed Etching UE-140, Sateen-o-pearl Decoration (Crystal) Old No. 2358 - 12" Vase.



No. 91 - 10" x ¾" Bud Vase (Jade)



No. 94 - 7" x 8¼" Sweet Pea Vase, D/610 Gold Band Overlay (Ebony)



No. 94½ - 5½" x 7½" Sweet Pea Vase (Ivory)



No. 96 - ½ Pound Candy Jar and Cover, White Gold Spatter Decoration (Jade)



No. 130 - Individual Ash Tray (Topaz)

375 files on 19 page(s)

Search results - " "



No. 133 - 3" x 5" Cigarette Box Cover (Azurite)



No. 138 - Cream and Sugar Set, Unidentified Gold Encrusted Decoration (Crystal)



No. 138 - Cream, Unidentified Gold Encrusted Decoration (Crystal)



No. 138 - Sugar Set, Unidentified Gold Encrusted Decoration (Crystal)



No. 214 - 10" Handled Tray, Plain Bottom



No. 236 - 8" Candlestick (Ritz Blue)



No. 240 - 10" Footed Cake Plate, D/140 (D/619) Gold Band Overlay (Primrose)



No. 244 - 10 1/2" Service Plate, E715 Partial Gold Band Overlay (Amber) Round Line.



No. 270 - Boudoir Lamp, Lotus D/114 Decoration, Paper Shade (Ebony)



No. 270 - Boudoir Lamp, Lotus D/114 Decoration, Without Shade (Ebony)



No. 299 - 5" 3-toed Candy Box and Cover, E704 (Bluebell)



No. 300 - 6" 3-toed Candy Box and Cover, Partial Platinum Band Overlay E703, Frosted Interior (Bluebell)



No. 319B2 - Georgian Basket (Pistachio, Crystal)



No. 390 - 6" Ash Tray, E752 Diane (Crystal)



No. 405 - 9" Footed Bowl, E732 (Crystal)



No. 430 - 2 1/4" x 3 1/4" Cigarette Box and Cover, E704 (Amber)



No. 432 - 8 1/2" Ram's Head Bowl, Gold Trim (Helio)



No. 437 - 9 1/2" Candlestick, E711 Gold Band Overlay & Trim (Emerald)



No. 438 - 8 1/2" Candlestick (Rubina)



No. 441 - 10 1/2" Diameter Comport, E711 Gold Band Overlay (Emerald)

Main Menu

- [Home](#)
- [Login](#)
- [Album list](#)
- [Search](#)

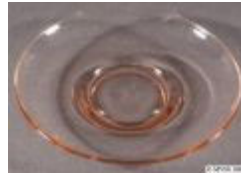
Search results - " "



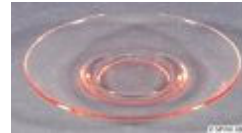
No. 494 - Footed Cup and Saucer (Peach-blo)



No. 494 - Footed Cup (Peach-blo)



No. 494 - Saucer (Amber)



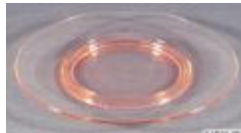
No. 494 - Saucer (Peach-blo)



No. 550 - 10 oz. Fluted and Handled Tumbler, E725 Gold Band Overlay (Mulberry)



No. 550 - 48 oz. Pitcher, E725 Gold Band Overlay (Mulberry)



No. 556 - 8" Plate, Plain Bottom (Peach-blo)



No. 611 - 2 1/2" Diameter Individual Almond (Willow Blue)

Decagon Line.



No. 623 - Handled Serving Tray, Gold Trim (Peach-blo)



No. 637 - 3 1/2" Candlestick (Golden Showers)



No. 643 - 6" 2-piece Ash Receiver, D/983-S Polo Scene



No. 676 - 11 1/2" Bowl, E732 Nankin Green Enamel Encrusted (Emerald)



No. 676 - 11 1/2" Bowl with 2899 3 1/2" Flower Block, E732



No. 680 - Compact and Frosted Cover (Amber)



No. 693/3000 - 2-piece Canapé Set, D/Dartmouth Indians (Crystal)



No. 693/3000 - Canapé Plate Only, D/Dartmouth Indians (Crystal)



No. 779 - 14" Vase, Spiral Optic, D/845 (E722) Gold Encrusted Dresden Rose (Peach-blo)



No. 840 - 15" Oval Bowl, Fancy Rolled Edge, E Cleo (Peach-blo)
Decagon Line.



No. 842 - 12 1/2" Bowl (Amethyst)
Decagon Line.



No. 877 - 11 1/2" Comport, E Cleo (Peach-blo)
Decagon Line.

Main Menu

- [Home](#)
- [Login](#)
- [Album list](#)
- [Search](#)

Search results - " "



No. 882 - Tobacco Humidor with Moistener, Gold Trim (Ebony)



No. 937 - 68 oz. Jug, Ice Lipped, Aero Optic, Unidentified Silver Overlay (Crystal)



No. 993 - 12½" Bowl with 2899 - 3½" Flower Block



1008 - 12" Vase, La Fleur Decoration (Ebony)



1045 - 13" Swan (Type 1) (Peach-blo)



1070 - 36 oz. Pinch Decanter, 3400 - Ball Shape Stopper (Carmen, Crystal)



1084 - 13" 2-handle Service Tray (Amber) Decagon Line.



1090 - 7" Tall Comport, Unidentified Rockwell Silver Decoration (Ritz Blue) Decagon Line.



1090 - 7" Tall Comport, E715 Willow (Crystal) Decagon Line.



1090 - 7" Tall Comport (Willow Blue, Crystal) Decagon Line.



1121 - Ice Pail, Metal Handle & Tongs, E722 Dresden Rose (Emerald)



1140 - 15" Bowl (Peach-blo) Swam Design. Springtime Line & Everglade Line.



1238 - 12" Footed Vase, Floral Sand Carving (Amethyst, Crystal)



1242 - 10" Vase, E773 Wildflower (Crystal)



1242 - 10" Vase, E Blossom Time (Crystal)



1256 - 11" Oval Bowl, Ruffled Edge (Crystal Frosted) Springtime line.



1268 - 2-lite Candlestick with Long Pegs (Crystal) From old #647 candlestick with long peg for bobeches & hurricane chimneys.



1283 - 8" Vase, E762 Elaine (Crystal)



1299 - 11" Footed Vase, D/1012 Gold Encrusted Diane (Crown Tuscan)



1300 - 8" Vase, E Rose Point (Crystal)

Main Menu

- [Home](#)
- [Login](#)
- [Album list](#)
- [Search](#)

Search results - " "

Main Menu

- [Home](#)
- [Login](#)
- [Album list](#)
- [Search](#)



1305 - 10" Vase (Crown Tuscan)



1305 - 10" Vase (Gold Krystol, Crystal)



1311 - 4" Footed Ash Tray (Royal Blue, Crystal)



1321 - 28 oz. Decanter (Amber, Crystal)



1341 - 1 oz. Cordial, E772 Chantilly (Crystal)



1380/1 - 26 oz. Square Decanter, E Rye (Crystal)



1381 - 28 oz. Bar Bottle or Decanter, Engraved "Rye" Decoration (Royal Blue, Crystal)



1491 - 5 1/2" Twin Salad Dressing Bowl, Unidentified Grey Cutting, Sterling Silver Foot (Crystal)
Round line.



1577 - 6" High 5-lite Candlestick, 11" Long (Crystal)



1603 - Candlestick with Long Peg (Crystal)



Atomizer, DeVilbiss Fittings, Unidentified Decoration (Crystal Frosted)

Unknown Atomizer/Cologne mold number style #4.



10 1/2" Footed Bowl, Rolled Edge (Jade)



10" Diameter, D/140 (D/619) Gold Band Overlay (Primrose)



Perfume Lamp, Style #3, Metal base (Azurite)



No. 1 - Shaker Top, Spun Nickel



No. 2 - Shaker Top, Spike Top, Nickel



No. 3 - Shaker Top, Heavy Cast Nickel



No. 4 - Shaker Top, Cone Shape, Non-Corrosive



No. 5 - Shaker Top, Heavy, Silver Plated



No. 6 - Shaker Top, Celluloid Disc, Spun Nickel Ring

Search results - " "



No. 8 - Shaker Top, Flat Glass Disc, Spun Nickel Ring



No. 10 - Shaker Top, Flat Glass Disc, Cast Nickel Ring



No. 11 - Shaker Top, Pearl Center, Aluminum Ring



No. 12 - Shaker Top with Agitator, Spun Nickel



No. 14 - Shaker Top, Non-corrosive Dome



No. 15 - Shaker Top, Aluminum Plate Dome



No. 16 - Shaker Top, Aluminum Plated



No. 17 - Shaker Top, All Glass



No. 18 - Shaker Top, Cash Nickel Pourer



No. 19 - Shaker Top, Pyramid Shape, Silver Plated



2357 - 8" Vase



2357 - 10" Vase



2358 - 10" Vase



2358 - 12" Vase



2360 - 12" Vase



2366 - 10" Vase



2367 - 10" Vase



2367 - 12" Vase



2367 - 12" Vase, Unnamed Etching UE-140, Sateen-o-pearl Decoration (Crystal)



2368 - 10" Vase

Main Menu

- [Home](#)
- [Login](#)
- [Album list](#)
- [Search](#)

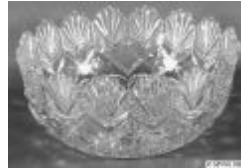
Search results - " "



2368 - 12" Vase



2514 - 4 " Nappy (Crystal)



2514 - 8" Nappy (Crystal)



2560 - Hatchet or Hammer (Opal)



2580 - Stand Lamp, A Size, #2 Collar



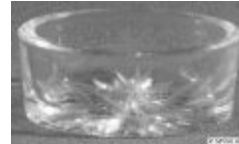
2585 - 8" Sweet Pea Vase



2585 - 14" Sweet Pea Vase



2586 - 18" Vase



2590 - Oval Salt Dip, Cut Wreath (Crystal)



2590 - Round Salt Dip, (1916 Mulberry)



2590 - Round Salt Dip, Sterling Footed Holder (1916 Mulberry)



2630/296 - 5¼ oz. Oil Bottle, Stopper Version 2



2630 - Straw Jar and Cover, Version 2



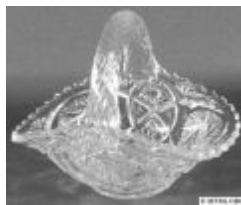
2631 - Shaker, Top Version #3 (Crystal)



2674 - Patented Bennett Lemon Extractor (Crystal)
This item covered by Patent Nos. 912,443 and 922,449. Click patent number to view patent copy. Patent No. 912,443 was issued to Arthur J. Bennett on February 16, 1909. Patent No. 922,449 was issued to Arthur J. Bennett on May 25, 1909.



2699/1 - Butter and Cover (Crystal)



2699/41 - Handled Squat Basket (Crystal)



2699/272 - 8" Nappy, A Shape, Round



2699/272 - 9" Nappy, A Shape, Round



2699/297 - 8 oz. Oil Bottle, Stopper Version 2

Main Menu

- [Home](#)
- [Login](#)
- [Album list](#)
- [Search](#)

Search results - " "

Main Menu

- [Home](#)
- [Login](#)

- [Album list](#)
- [Search](#)



2699/384 - 13 oz. Molasses Can or Syrup, Nickel Top



2704 - 14" Vase



2706 - 14" Vase



2729/267 - 4" Nappy, A Shape (Round)
New number for 1921.



2750/1 - Low Soda Fountain Spoon Holder



2750/1 - Tall Soda Fountain Spoon Holder



2750/269 - 10" Nappy, C Shape (Belled)



2750/423 - 12" Trumpet Vase, Plain Top



2750/424 - 12" Trumpet Vase, Scalloped Top



2751 - 4" Coaster, Star Bottom



2760 - 7 oz. Oil Bottle and Stopper Version 2



2760 - Electric Lamp, Frosted Daisies, Prisms on Shade Holder (Crystal, Crystal Frosted)



2766 - Footed Banquet Bowl, Version 2



2766 - Cake Salver
Made in various sizes including 9".



2780 - 7" Candlestick (Crystal)



2780 - 10" Plate (Crystal)



2780 - Handled Spoon (Crystal)



2791 - 3 1/4" Coaster



2800/13 - 7 oz. Catsup Bottle, Handle Version 2



2800/113 - 9" Vase

Search results - " "

Main Menu

- [Home](#)
- [Login](#)
- [Album list](#)
- [Search](#)



2800/120 - 16" Tall Vase, Version 2



2800/121 - 12" Tall Vase, Version 2



2800/121 - 18" Tall Vase



2800/234 - 15½" Basin Only (1916 Mulberry)



2800 - Powder Box with Bakelite Cover (Amber)
Made using 2800/243 sugar bottom.



2860/10 - Berry Cream (Crystal)
Sold as Lexington #7 in 1930s.



2860/10 - 2-Handled Berry Sugar (Crystal)
Sold as Lexington #7 in 1930s.



2860/297 - 7½ oz. Tall Oil Bottle, Stopper Version 2



2881 - 6" Footed Vase, View 2



2899 - 3" Patented Flower Block (Ebony)



2932 - 12" Flower Bowl, E715 Gold Encrusted Willow (Peach-blo)



2943 - 7½" 3-footed Chinese Lily Bowl with 2899 4" Flower Block



2960/358 - 9" Footed Salver
Originally sold as 2960/17.



2960 - Puff Box, Celluloid Cover (Emerald)



2960 - Puff Box, No Cover (Emerald)



3000 - 3 oz. Footed Tumbler, D/Dartmouth Indians (Crystal)



3011/3 - 7 oz. Tall Sherbet, Frosted Stem (Carmen, Crystal)



3011/14 - 1 oz. Cordial (Amber, Crystal)



3011 - Cigarette Box and Cover, Tall Stem, Ebony Foot (Crown Tuscan, Ebony)



3011 - 7" Compot, Flared, Ebony Foot (Crown Tuscan, Ebony)

Search results - " "

Main Menu

- [Home](#)
- [Login](#)
- [Album list](#)
- [Search](#)



3025 - 4½ oz. Oyster Cocktail (Gold Krystol, Amber)



3035 - 2½ oz. Wine, E746 Gloria (Gold Krystol)



3075 - 2½ oz. Wine, Optic, E718 Imperial Hunt (Emerald)



3078 - 3 oz. Cocktail (Carmen)



3095/7606 - Goblet (Crystal, Madeira)



3104 - 5 oz. Tall Hoch, Unidentified Grey Cutting (Crystal)



3106 - 2 oz. Sherry, E Lily of the Valley, Frosted Stem & Foot (Crystal)



3109 - 1 oz. Cordial (Crystal, Royal Blue)



3109 - 9 oz. Goblet, E401 Old Fashioned Grape (Crystal)



3112 - 7 oz. Sherbet, E Ye Olde Ivy (Crystal)



3115 - 9 oz. Goblet, Ebony Stem & Foot (Crystal, Ebony)



3121 - 3 oz. Cocktail, E773 Wildflower (Crystal)



3121 - 10 oz. Goblet (Heatherbloom, Crystal)



3121 - 3½ oz. Wine, R. C. Eng. 698 Achilles (Crystal)



3122 - 12 oz. Footed Tumbler, E746 Gloria (Peach-blo, Crystal)



3122 - 12 oz. Footed Tumbler, E752 Diane (Crystal)



3122 - 2½ oz. Wine (Royal Blue, Crystal)



3130 - 1 oz. Cordial, E744 Apple Blossom (Emerald)



3130 - 7 oz. Tall Sherbet, E731 (Gold Krystol, Crystal)



3132 - 10 oz. Goblet, R. C. Eng. 904 Sylvia (Crystal)

Search results - " "

Main Menu

- [Home](#)
- [Login](#)

- [Album list](#)
- [Search](#)



3134 - 10 oz. Goblet, R. C. Eng. 951 Broadmoor (Crystal)



3400/1 - 13" Bowl, E744 Apple Blossom (Amber)



3400/4 - 12" 4-toed Bowl, E744 Apple Blossom, with No. 518 - 8½" Draped Lady Figure Flower Holder



3400/6 - 11½" Cheese and Cracker Plate Only, D/1041 Gold Encrusted Rose Point (Crystal)



3400/10 - 11" Handled Sandwich Tray, E744 Apple Blossom (Crystal)



3400/11 - 3-piece Mayonnaise Set, E Rose Point (Crystal)



3400/13 - 6" 4-toed Composit, E Candlelight (Crystal)



3400/13 - 6" 4-toed Composit, E Cleo



3400/29 - 7" Tall Footed Composit, Open Stem, E744 Apple Blossom (Heatherbloom, Crystal)



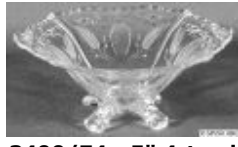
3400/38 - 12 oz. Tumbler, E752 Diane (Heatherbloom)



3400/52 - 5½" Butter and Cover w/square knob, E752 Diane (Crystal)



3400/52 - 5½" Butter and Cover w/square knob, E Rose Point (Crystal)



3400/74 - 5" 4-toed Composit, Eng 895 Sonora, Partial Grey Cut (Crystal)



3400/79 - 6 oz. Tall Footed Oil, Ground Stopper, E752 Diane (Crystal)



3400/107 - 14 oz. Mug (Amethyst, Crystal)



3400/119/1341 - 5-piece Cordial Set (Amethyst, Crystal)



3400/144 - Cigarette or Place Card Holder, Ash Tray Foot (Amber, Crystal)



3400/152 - 76 oz. Doulton Jug (Amber, Crystal)



3400/154 - 14 oz. Handled Pinched Mug (Amethyst, Crystal)



3400/158 - Cocktail Shaker, Unidentified Cutting (Second Image) (Willow Blue)

Search results - " "



**3400/647 - 6" 2-lite
Candlestick, Round Foot,
Version 4, Unidentified R.
C. Engraving (Crystal)**
3400 Line Accessory.



**3400/851 - Ice Pail,
Metal Handle and Tongs
(Amber)**
3400 line accessory.
Also Decagon Line.



**3450 - 40 oz. Wine
Decanter, Ground Stopper
(Forest Green, Crystal)**



**3500/1 - 10 oz. Goblet,
Tall Bowl (Carmen,
Crystal)**



**3500/16 - 11" Footed
Bowl, E762 Elaine
(Crystal)**



**3500/16 - 11" Footed
Bowl, R. C. Eng. 722
Croesus (Crystal)**



**3500/41 - 10" Urn or
Candy Jar (Version 1),
E761 Valencia (Crystal)**



**3500/54 - 6½" 2-handle
Low Comport (Crown
Tuscan)**



**3500/55 - 6" 2-handle
Footed Basket, D/1047
Gold Encrusted
Wildflower (Crystal)**



**3500/61 - 6½" Handled
3-compartment Relish
(Crown Tuscan)**



**3500/62 - 7½" 2-handle
4-compartment Relish
(Crown Tuscan)**



**3500/69 - 6½" 3-compartment
Relish (Crown Tuscan)**



**3500/69 - 6½" 3-compartment
Relish, Unidentified Grey
Cutting (Crystal)**



**3500/97 - 14" 2-handle
4-compartment Celery
and Relish, Non-
Cambridge Silver
Decoration, Unidentified
Grey Cutting (Crystal)**



**3500/112 - 15" x 4½" 2-handle
3-compartment
Celery and Relish
(Amber)**



**3500 - 3 oz. Cocktail
(Carmen, Crystal)**



**3500 - 1 oz. Cordial,
D/1041 Gold Encrusted
Rose Point (Crystal)**



**3500 - 7 oz. Low Sherbet
(Carmen, Crystal)**



**3500 - 7 oz. Tall Sherbet
(Carmen & Crystal)**

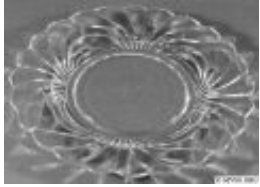


**3500 - 10 oz. Footed
Tumbler (Royal Blue,
Crystal)**

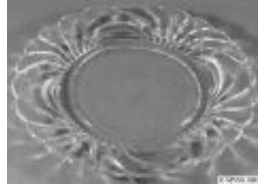
Main Menu

- [Home](#)
- [Login](#)
- [Album list](#)
- [Search](#)

Search results - " "



Caprice 21 - 6½" Bread & Butter (Crystal)
aka 3550/21



Caprice 24 - 9½" Dinner Plate (Crystal)
aka 3550/24



Caprice 33 - 14" 3-Footed Cabaret Plate (Crystal)
aka 3550/33



Caprice 66 - 13" 4-footed Crimped Bowl (Crystal Alpine)
aka 3550/66



Caprice 110 - 8" Twin Salad Dressing (Crystal)
aka 3550/110



Caprice 129 - 6½" 2-piece Mayonnaise Set (Moonlight)
aka 3550/129



Caprice 208 - 4½" x 3½" Cigarette Box & Cover (Crystal)
aka 3550/208



Caprice 210 - 4½" Triangle Ash Tray (Crystal)
aka 3550/210



Caprice 1338 - 6" 3-lite Candlestick, Version 4 (Crystal Alpine)
aka 3550/1338
Caprice line accessory.



1577 - 5-lite Candlestick, 6" High, 11" long (Crystal)
aka 3550/1577
Caprice line accessory.



3600/311 - Candy Box and Cover, E772 Chantilly (Crystal)



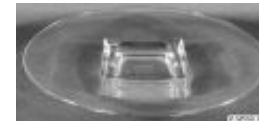
3600/327 - 7" 2-handle Plate, D/1061 Gold Encrusted Chantilly (Crystal)



3600/495 - 5½" 2-lite Candlestick, E772 Chantilly (Crystal)



3600 - 10 oz. Goblet, R. C. Eng. 988 Petite (Crystal)



3797/26 - 11½" Plate (Crystal)



3900/66 - 13" 4-footed Crimped Bowl, E Rose Point (Crystal)



3900/72 - 6" 2-lite Candlestick, E Candlelight (Crystal)



3900/166 - 14" Rolled Edge Plate, Eng. Beta Sigma Phi Sorority (Crystal)



6001 - 12" Vase



6004 - 6" Footed Vase

Main Menu

- [Home](#)
- [Login](#)

- [Album list](#)
- [Search](#)

Search results - " "



7390 - 9 oz. Goblet, Optic



7390 - 10 oz. Goblet, Optic



7390 - 3 oz. Wine



7606 - 1 oz. Pousse Café, Optic (Crystal)



7720 - 9 oz. Goblet, E401 Old Fashioned Grape (Crystal)



7801 - 1 oz. Pousse Café, Cut 121 (Crystal)



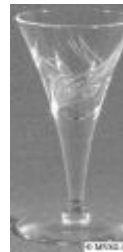
7860 - 10 oz. Goblet



7927 - 5 oz. Hollow Stem Champagne



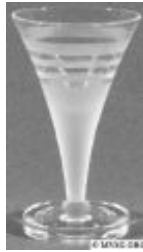
7966 - 1 oz. Cordial (Amethyst)



7966 - 1 oz. Low Cordial, Eng1093 Flame (Crystal)



7966 - 2 oz. Sherry (Amber)



7967 - Low Cordial, E Dawn (Crystal)



8701 - 10 oz. Tumbler (Amber)



8701 - 12 oz. Tumbler, E703, Gold Trim (Peach-blo)



9024 - 2½ oz. Tumbler



A56 - 3 oz. Cocktail (Crystal)



Arcadia 54 - 10½" Flared Bowl (Crystal)



1 Pound Butter Mold, Fleur de Lis Print



Centennial 36 - 7" 3-compartment Candy Box (Peach-blo)



4003 - Horseradish, Cut Flower

Main Menu

- [Home](#)
- [Login](#)
- [Album list](#)
- [Search](#)

Search results - " "

Main Menu

- [Home](#)
- [Login](#)
- [Album list](#)
- [Search](#)



4020 - Toothpick, Cut Flower

Also available Cut Lapidary.



2872 - Toothpick, Cut Lapidary



2961 - Toothpick, Cut Lapidary



Door Knobs (Crystal)



Everglade 2 - 5" Candlestick (Crystal)



Everglade 3 - 6" 2-lite Candlestick (Willow Blue)

Leaf Line 1211.



Everglade 5 - 10" 2-piece Flower Holder (Crystal)

Leaf Line #1210 (#1209 Candlestick & Everglade #54 Vase).



Everglade 13 - 13" Rolled Edge Bowl (Amber)

Tulip design.



Everglade 19 - 12" x 7 1/2" Footed Oval Bowl (Willow Blue)

Matches Leaf Line design.



Everglade 56 - 13" 3-toed Sandwich Plate (Amber)



Farber 5668 - Candlestick, Chrome Candle Holder



Farber 5791 - 14 oz. Decanter (Amber, Crystal)
Part of Farber-5791 Cordial Set.



Farber 5791 - Filigree Metal Tray

Part of Farber-5791 Cordial Set.



Farber 5915 - Duchess Filigree Holder
Part of Farber 5915 - 2-compartment Relish or Preserve Dish.



Farber 5961/62 - 5 1/2" Comport, Chrome



Farber - 32 oz. Decanter (Forest Green, Crystal)

Insert #3400/92 - 32 oz. Ball Shaped Decanter.



10 oz. Tumbler, Carmen Heart Foot (Crystal, Carmen)



Mount Vernon 110 - 5" 2-lite Candlestick (Crystal)



Pristine 430 - 12" Belled Bowl, Engraving Steps Sample, Step #2 Roughed



Pristine 430 - 12" Belled Bowl, Engraving Steps Sample, Step #3 Smoothed

Search results - " "



Pristine 430 - 12" Belled Bowl, Engraving Steps Sample, Complete



Pristine 477 - 9½" Pickle or Corn Dish, D/1045 Gold Edge Wildflower (Crystal)



Pristine 500 - 6½" 1-lite Candlestick, E Rose Point (Crystal)



Red Riding Hood Toy Punch Cup (Opal)



Sheffield - 7½" 3-compartment Relish, Sterling Silver Base (Amethyst)
Insert 3500/70 - 7½" 3-compartment Relish.



Seashell 1 - 5" Bread and Butter Plate, Rockwell Sterling Silver Seahorse Decoration (Crown Tuscan)



Seashell 14 - 9" Comport (Crystal Moonstone)



Seashell 14 - 9" Comport (Milk)
Milk No. W104.



Seashell 21 - 6" Footed Candy Box and Cover (Crown Tuscan)



Seashell 46 - 7½" Shell Flower Holder (Amethyst)



Stratford 56 - 7" Squat Vase, Plain Edge (Crystal)



U. S. Navy Kitchen Shaker and Top, Large



U. S. Navy Kitchen Shaker and Top, Small



Wetherford 4071/57 - 8" Cupped Deep Bowl, Scalloped Edge, Worn Enamel Fruit Decoration (Ivory)



Wetherford 4071/148 - 5½" Tall Footed Tapered Jelly Comport and Cover (Emerald)

Main Menu

- [Home](#)
- [Login](#)
- [Album list](#)
- [Search](#)

375 files on 19 page(s)

[1](#) [2](#) [3](#) [4](#) [5](#) [6](#) [7](#) [8](#) [9](#) [10](#) [11](#) [12](#) [13](#) [14](#) [15](#) [16](#) [17](#) [18](#) [19](#)

Powered by Coppermine Photo Gallery

Images and content copyright 2008-2021 by Miami Valley Study Group (MVSG).
Use of any images or content without written permission is prohibited.