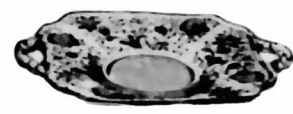




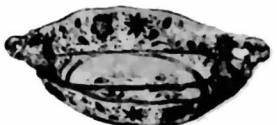
477



3500/15



3400/1181



3400/90



3500/55



3500/69



3400/1180



3500/54



3500/181



3121
10 oz. Goblet



3121
10 oz. Ftd. Tumbler



3121
5 oz. Ftd. Tumbler



3121
12 oz. Ftd. Iced Tea



3121
6 oz. Tall Sherbet



3121
6 oz. Low Sherbet



3121
4 1/2 oz. Claret



3121
3 oz. Cocktail



3121
5 oz. Cafe Parfait



3121
3 1/2 oz. Wine



3121
1 oz. Cordial



3121
4 1/2 oz. Oyster Cocktail



3121
5-3/4 in. Blown Compot

LIST OF WILDFLOWER ITEMS

- 3121 10 oz. Goblet
- 3121 6 oz. Tall Sherbet
- 3121 6 oz. Low Sherbet
- 3121 3 oz. Cocktail
- 3121 3 1/2 oz. Wine
- 3121 4 1/2 oz. Claret
- 3121 4 1/2 oz. Oyster Cocktail
- 3121 1 oz. Cordial
- 3121 5 oz. Cafe Parfait
- 3121 12 oz. Ftd. Ice Tea
- 3121 10 oz. Ftd. Tumbler
- 3121 5 oz. Ftd. Tumbler
- 477 9 1/2 in. Pickle
- 3400/1180 5 1/4 in. 2 Hdl. Bonbon
- 3400/1181 6 in. 2 Hdl. Plate
- 3400/90 6 in. 2 part Relish
- 3500/15 Ind. Sugar & Cream
- 3500/54 6 in. 2 Hdl. Ftd. Bonbon
- 3500/55 6 in. 2 Hdl. Ftd. Basket
- 3500/69 6 1/2 in. 3 part Relish
- 3500/161 8 in. 2 Hdl. Ftd. Plate
- 3400/91 8 in. 3 part Relish
- 3500/57 8 in. 3 part Candy Box & Cover
- 3121 5 3/8 in. Tall Compot
- 3900/17 Cup & Saucer
- 3900/19 2 pc. Mayonnaise Set
- 3900/20 6 1/2 in. Bread & Butter Plate
- 3900/22 8 in. Salad Plate
- 3900/24 10 1/2 in. Dinner Plate
- 3900/26 12 in. 4 Ftd. Plate
- 3900/28 11 1/2 in. Ftd. Bowl
- 3900/33 13 in. 4 Ftd. Torte Plate, R.E.
- 3900/34 11 in. 2 Handled Bowl
- 3900/35 13 1/2 in. 2 Handled Cake Plate
- 3900/40 Ind. Sugar & Cream
- 3900/41 Sugar & Cream
- 3900/54 10 in. 4 Ftd. Bowl, flared
- 3900/62 12 in. 4 Ftd. Bowl, flared
- 3900/65 12 in. 4 Ftd. Oval Bowl
- 3900/67 5 in. Candlestick
- 3900/72 6 in. 2 lite Candlestick
- 3900/74 6 in. 3 lite Candlestick
- 3900/100 6 oz. Oil, g. s.
- 3900/111 4 pc. Mayonnaise Set
- 3900/115 13 oz. Tumbler
- 3900/120 12 in. 5 part Celery & Relish
- 3900/123 7 in. Relish or Pickle
- 3900/124 7 in. 2 part Relish
- 3900/125 9 in. 3 part Celery & Relish
- 3900/126 12 in. 3 part Celery & Relish
- 3900/129 3 pc. Mayonnaise Set
- 3900/130 7 in. 2 handled Ftd. Bonbon
- 3900/131 8 in. 2 handled Ftd. Bonbon Plate
- 3900/136 5 1/2 in. Compot
- 3900/165 Candy Box & Cover
- 3900/166 14 in. Plate, r. e.
- 3900/671 Ice Bucket
- 3900/671 Ice Bucket with chrome Handle
- 3900/1177 Chrome Ice Tongs (long)
- 3900/1177 Salt & Pepper Shaker
- 274 10 in. Bud Flower Holder
- 278 11 in. Ftd. Flower Holder
- 279 13 in. Ftd. Flower Holder
- 968 2 pc. Cocktail Icer
- 1237 9 in. Ftd. Flower Holder
- 1238 12 in. Ftd. Flower Holder
- 1299 11 in. Ftd. Flower Holder
- 1309 5 in. Globe Flower Holder
- 1603 Hurricane Lamp (Etch. Chimney only)
- 1617 Hurricane Lamp (Etch. Chimney only)
- 6004 6 in. Ftd. Flower Holder
- 6004 8 in. Ftd. Flower Holder

Wildflower

== DESIGN ==

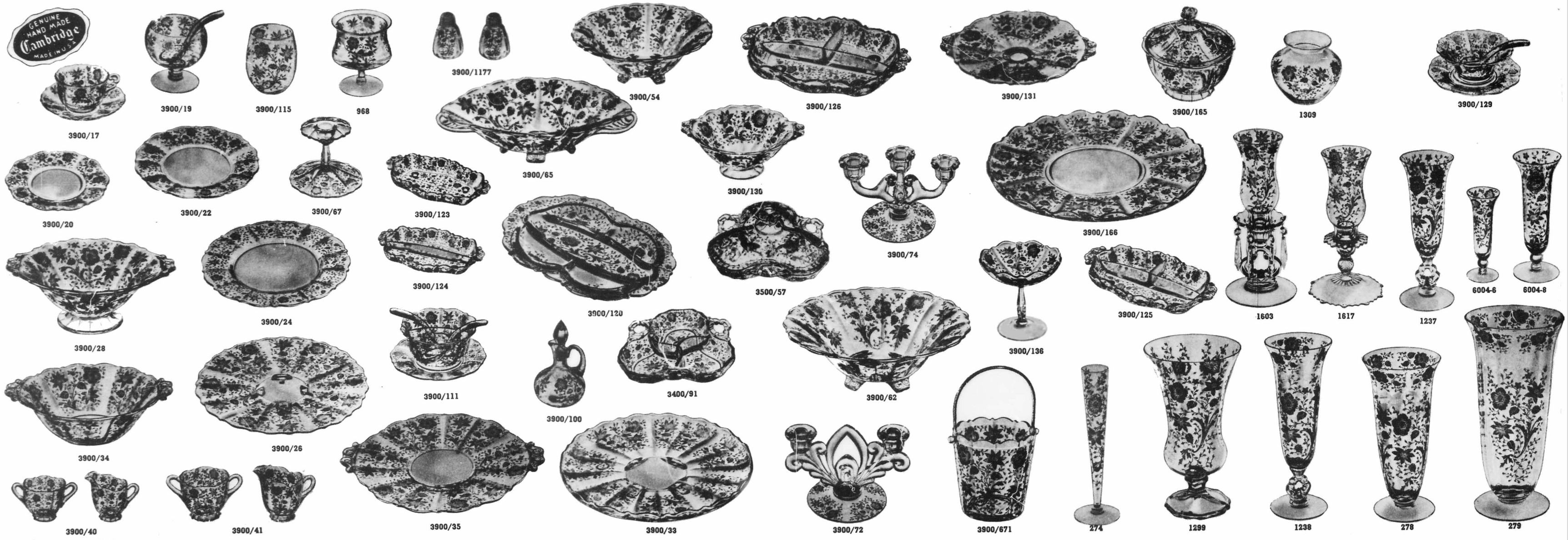
WILDFLOWER is the name given to this beautiful new etching created by The Cambridge Glass Company. In its modern treatment the graceful "Wildflower" offers a theme for the most fastidious and unique table decoration. Wildflower represents a new treatment in etching. The stems, leaves and flowers with the satin background give a pleasing and delightful effect. This pattern will be available in open stock for many years affording opportunity for addition and replacement.

The Cambridge Glass Company
Cambridge, Ohio



GENUINE
HAND MADE
Cambridge
MADE IN U.S.A.

Wildflower



GENUINE
HAND MADE
Cambridge
MADE IN U.S.A.

3900/1177

3900/54

3900/126

3900/131

3900/165

1309

3900/129

3900/17

3900/19

3900/115

968

3900/65

3900/130

3900/74

3900/166

1603

1617

1237

6004-6

6004-8

3900/20

3900/22

3900/67

3900/123

3900/65

3900/130

3900/74

3900/166

1603

1617

1237

6004-6

6004-8

3900/28

3900/24

3900/124

3900/120

3500/57

3900/136

3900/125

1603

1617

1237

3900/34

3900/26

3900/111

3900/100

3400/91

3900/62

3900/136

3900/125

1603

1617

1237

3900/40

3900/41

3900/35

3900/33

3900/72

3900/671

274

1299

1238

278

279