

**smart table appointments  
and  
decorative arrangements  
using**

**the new**

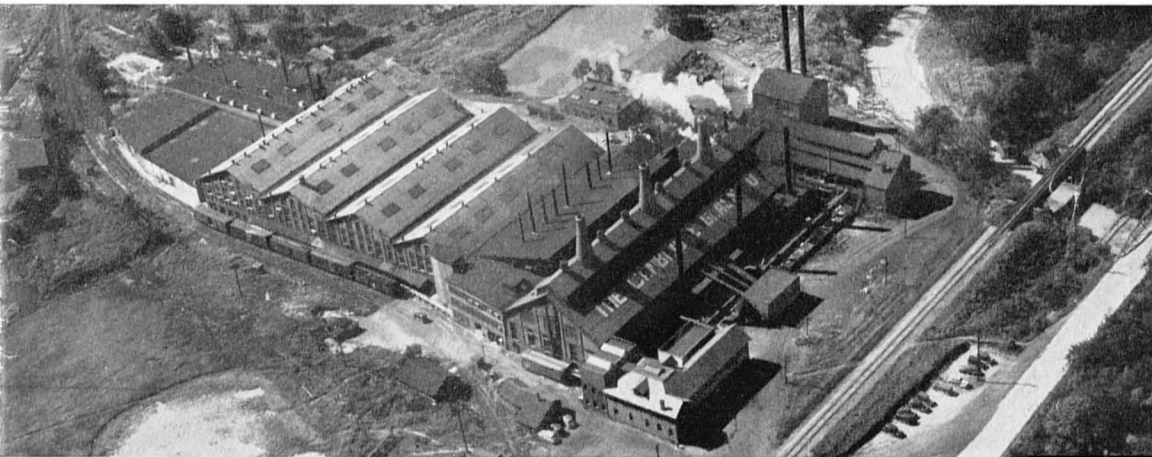
**CAMBRIDGE ARMS**

**and  
ACCESSORY UNITS**





Cambridge handmade crystal has long been identified with gracious living. It is a crystal of more than practical use. Its inherent beauty, born of the finest materials and skilled craftsmanship, places it among the home's proudest possessions. Typical of Cambridge creations are the distinctive "Cambridge Arms" decorative table accessories shown in the following pages. They are an entirely new idea for beautifying the table and are adaptable to many unique and clever arrangements. Whether the setting is casual or formal, these lovely crystal appointments will enhance your table with rare beauty and charm. And . . . with a little experimentation . . . you may enjoy the thrill of creating your own arrangements . . . with sparkling Cambridge Arms!



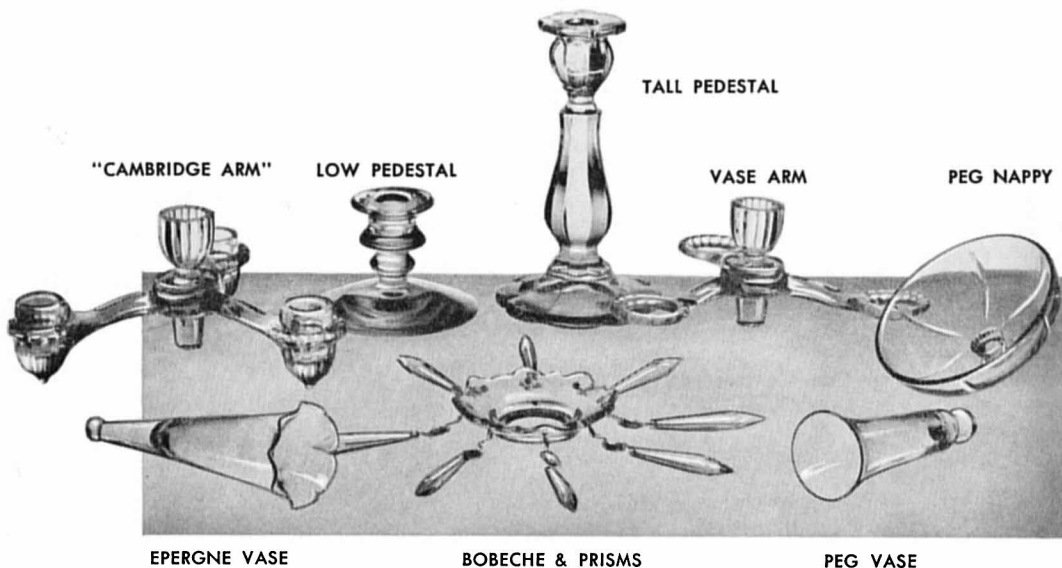
**THE CAMBRIDGE GLASS COMPANY, Cambridge, Ohio**

# "CAMBRIDGE ARMS"

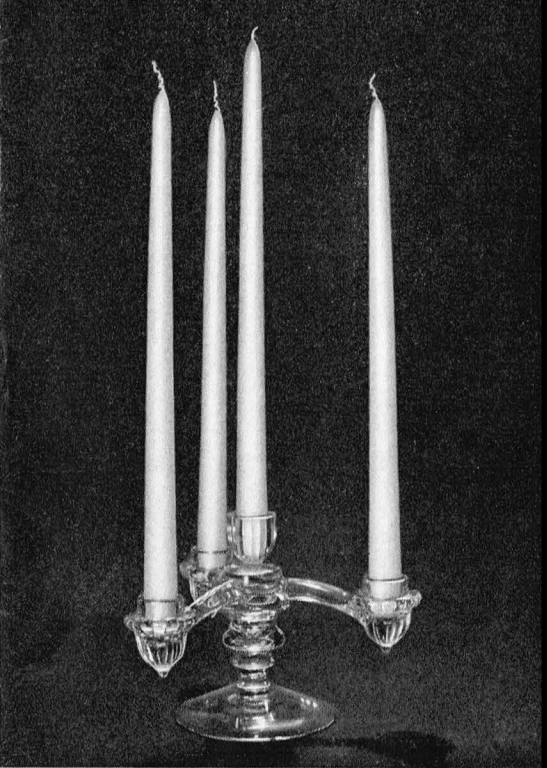
## and ACCESSORY UNITS

(Pat. No. 154701-154796)

A sparkling new idea in decorative arrangements has been created by The Cambridge Glass Company. Scores of different arrangements in gleaming crystal-clear glass are possible by using the basic units of "CAMBRIDGE ARMS" and the accessory units illustrated below.



The "CAMBRIDGE ARM" can be used separately as a four-candle holder, or various quantities of the accessory units can be added to build an arrangement to suit one's fancy or the occasion. With this new idea, one may create a plain simple centerpiece or a very elaborate decoration for the most sumptuous affair.



The above illustrations show the "CAMBRIDGE ARM" used as a candle holder. The four-candle arrangement shows the arm inserted in the low candlestick pedestal from the accessory unit group. The seven-candle holder consists of two arms, one inserted in the center well of the other. The two arms can be used in many ways. They can be separated to serve as a pair of four holder candlesticks at either end of your table or as an eight-candle centerpiece using a small container to hold the flowers. Please refer to illustrations on page six and you will agree these are most imposing and expensive looking yet they can be had for what you would ordinarily spend for conventional multi-branch candlesticks. Furthermore, the arm alone, or on a pedestal, can be used in a shallow bowl you may already have . . . or in the popular "PRISTINE" pattern bowl as shown on page nine. The decorative theme can be easily arranged to fit the holiday time of year or occasion.

**The unit at the right consists of one arm with a peg nappy and flower block set in the center well of the arm.**

On this page are illustrated two arrangements that are simple but effective. The cost is surprisingly low. Various accessory units can be added later to enable you to build the more elaborate decorations.

**The arm on the low pedestal base with a peg vase in the center well forms the basis for this lacy looking epergnette shown at your right.**



Something original and charmingly different is this "LAZY SUSAN" for the discriminating hostess. Its many uses are for mints and nuts, pickles and olives, or preserves and sauces on the buffet table; for hors d'oeuvres on the cocktail table; or for floating candles or flowers for dining splendor.



Now the versatility of the "CAMBRIDGE ARMS" and the accessory units begins to unfold. The "LAZY SUSAN" shown above, consisting of one arm, four peg nappies, and the low pedestal candlestick, combined with the epergnette shown on the preceding page, affords the happy owner of these two units the opportunity to have all the decorations already described—even pairs of some. The lovely flower arrangement illustrated below and the combinations shown on the next two pages can also be made with the parts from these units.

This decoration is made from one arm, three peg nappies and a peg vase. It will create many OH's and AH's at your next luncheon; perfect living room decor, too!





The above consists of two arms, a low pedestal candlestick and a peg nappy and flower block.

To your right two arms and any small vase or flower container are used.



The impressive, eye catching centerpieces shown on this page will add warmth and graciousness to any dinner party. The stately eight-candle arrangements are those mentioned on page three of this booklet. The position of the arms in these three combinations is shown on the next page (lower illustration).



This attractive five candle decoration is made with two arms, four peg nappies and a low pedestal candlestick. Arrangement of the parts is suggested in the illustration on the next page.

Various color combinations of candles can be used.



The beautiful centerpiece shown on your right is similar to the one of five candles shown on the preceding page; a peg vase is used instead of a candle in the center. This combination consists of two arms, four peg nappies, one peg vase, and one low pedestal candlestick arranged as illustrated below.



The CAMBRIDGE GLASS COMPANY has packaged these parts as a unit including a glass flower block at a cost so modest that all arrangements mentioned up to now can be made at an average of about a dollar per unit. Think of it! What a perfect gift to yourself or someone dear to you!

To further enhance the beauty of your table or buffet decorations, CAMBRIDGE has developed a tall pedestal candlestick of beautiful design with bobèche and cut prisms to be used with the "CAMBRIDGE ARMS" and Accessory Units. The following pages illustrate a few more of the combinations possible using these two items or additional arms and/or accessory units. Your own ingenuity will create many more arrangements. It is no wonder homemakers call this new idea the one-hundred-and-one; that is, 101 different combinations.

The epergne below uses two arms, three peg vases and one low pedestal candlestick.

This stately decoration is made with two arms, three peg vases, one tall pedestal candlestick and three sets of bobèches and prisms. Striking, isn't it?





The "CAMBRIDGE ARM" can be used in almost any shallow bowl, as previously mentioned. Pictured here are three of countless decorative themes possible. The bowl shown is from CAMBRIDGE'S popular Pristine pattern.

Fruit or vegetables for the Fall Harvest theme; holly, spruce, pine, mistletoe and cones for Christmas; lilies for Easter; ideas galore for any occasion.



To your left is a baby shower idea using the CAMBRIDGE Pristine bowl, one arm and a CAMBRIDGE figure flower holder.

The de luxe units shown here can be purchased complete. Or, if you have already started with one of the lesser "CAMBRIDGE ARMS" units, you can ultimately make up these superb combinations by adding a part from time to time. All this luxury eventually, and not so hard on the budget either!



The gorgeous seven-light candelabrum above has six bobeches with forty-eight glowing hand-cut prisms with two arms and a tall pedestal candlestick.



Above and to your right are two distinctive floral decorations for the most formal affair, and may be used singly or in pairs. They consist of two arms, three peg vases, three or six sets of bobeche and prisms, and either the tall or low pedestal candlestick.



This exciting arrangement is just the thing—the unusual—for that bridal party . . . that cocktail or buffet party. It consists of four arms, six peg nappies and three peg vases. Here it is shown as a floral decoration, but the six nappies can be used as servers of canape delights.



The combination below is an extension of the five-candle arrangement shown on page six. It looks equally as well on a buffet or credenza . . . or down the center of a large table. Four arms, eight peg nappies and one low pedestal candlestick make up this luxurious decoration.

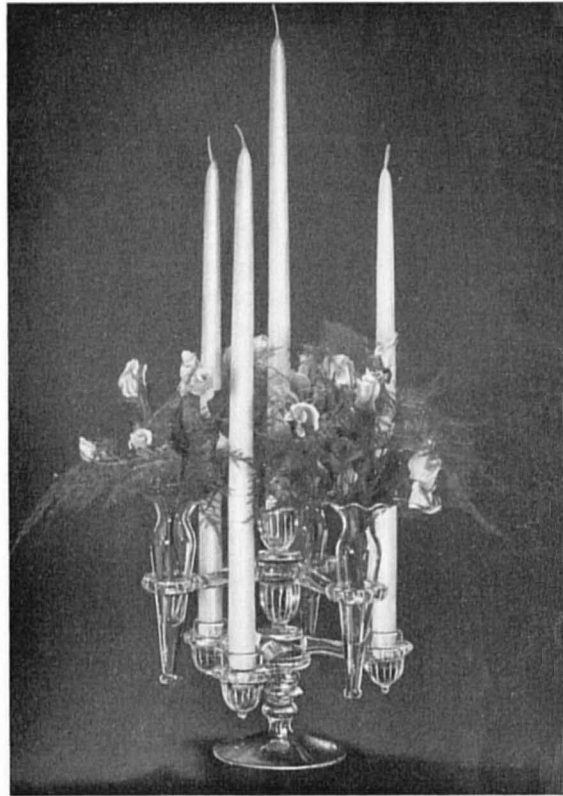
11



For years now, CAMBRIDGE has been known for its ever-so-smart innovation—the EPERGNES. These epergnes, incorporating flowers and candles in one unit, are used by thousands of women who know that they are practical and attractive. They know, too, that they are economical because they use very few flowers to achieve beautiful effects, and that they are space savers, for they take very little room on small tables.

The tremendous popularity of the epergne has continued and when CAMBRIDGE saw the possibility of a new epergne (pictured here) using the new CAMBRIDGE ARM, an epergne arm holding three vases was quickly developed. This new epergne is beautiful beyond compare and by virtue of its symmetrical design, looks strikingly lovely from every angle.

CAMBRIDGE ARMS and accessory units are available at good stores everywhere.



**THE CAMBRIDGE GLASS COMPANY**  
Cambridge, Ohio



