

LIST OF ROSE POINT ITEMS

- 3500 10 oz. Goblet
- 3500 7 oz. Tall Sherbet
- 3500 7 oz. Low Sherbet
- 3500 3 oz. Cocktail
- 3500 2 1/2 oz. Wine
- 3500 4 1/2 oz. Claret
- 3500 4 1/2 oz. Oyster Cocktail
- 3500 1 oz. Cordial
- 3500 5 oz. Cafe Parfait
- 3500 12 oz. Ftd. Ice Tea
- 3500 10 oz. Ftd. Tumbler
- 3500 5 oz. Ftd. Tumbler
- 477 9 1/2 in. Pickle
- 3400/1180 5 1/4 in. 2 Hdl. Bonbon
- 3400/1181 6 in. 2 Hdl. Plate
- 3400/90 6 in. 2 part Relish
- 3500/15 Ind. Sugar & Cream
- 3500/54 6 in. 2 Hdl. Ftd. Bonbon
- 3500/55 6 in. 2 Hdl. Ftd. Basket
- 3500/69 6 1/2 in. 3 part Relish
- 3500/161 8 in. 2 Hdl. Ftd. Plate
- 3400/91 8 in. 3 part Relish
- 3500/57 8 in. 3 part Candy Box & Cover
- 3500/101 5 3/4 in. Tall Comport
- 3900/17 Cup & Saucer
- 3900/19 2 pc. Mayonnaise Set
- 3900/20 6 1/2 in. Bread & Butter Plate
- 3900/22 8 in. Salad Plate
- 3900/24 10 1/2 in. Dinner Plate
- 3900/26 12 in. 4 Ftd. Plate
- 3900/28 11 1/2 in. Ftd. Bowl
- 3900/33 13 in. 4 Ftd. Torte Plate, R. E.
- 3900/34 11 in. 2 Handled Bowl
- 3900/35 13 1/2 in. 2 Handled Cake Plate
- 3900/40 Ind. Sugar & Cream
- 3900/41 Sugar & Cream
- 3900/54 10 in. 4 Ftd. Bowl, flared
- 3900/62 12 in. 4 Ftd. Bowl, flared
- 3900/65 12 in. 4 Ftd. Oval Bowl
- 3900/67 5 in. Candlestick
- 3900/72 6 in. 2 lite Candlestick
- 3900/74 6 in. 3 lite Candlestick
- 3900/100 6 oz. Oil, g. s.
- 3900/111 4 pc. Mayonnaise Set
- 3900/115 13 oz. Tumbler
- 3900/120 12 in. 5 part Celery & Relish
- 3900/123 7 in. Relish or Pickle
- 3900/124 7 in. 2 part Relish
- 3900/125 9 in. 3 part Celery & Relish
- 3900/126 12 in. 3 part Celery & Relish
- 3900/129 3 pc. Mayonnaise Set
- 3900/130 7 in. 2 handled Ftd. Bonbon
- 3900/131 8 in. 2 handled Ftd. Bonbon Plate
- 3900/136 5 1/2 in. Comport
- 3900/165 Candy Box & Cover
- 3900/166 14 in. Plate, r. e.
- 3900/671 Ice Bucket
- 3900/1177 Ice Bucket with chrome Handle
- 274 Chrome Ice Tongs (long)
- 275 Salt & Pepper Shaker (doz. pr.)
- 279 10 in. Bud Flower Holder
- 968 11 in. Ftd. Flower Holder
- 1237 13 in. Ftd. Flower Holder
- 1238 2 pc. Cocktail Icer
- 1299 9 in. Ftd. Flower Holder
- 1309 12 in. Ftd. Flower Holder
- 1603 5 in. Glode Flower Holder
- 1617 Hurricane Lamp (Etch. Chimney only)
- 6004 Hurricane Lamp (Etch. Chimney only)
- 6004 6 in. Ftd. Flower Holder
- P. 101 8 in. Ftd. Flower Holder
- Cocktail Shaker (Patent—D133,198)

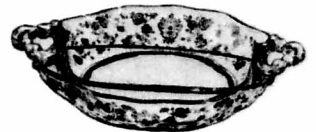


477

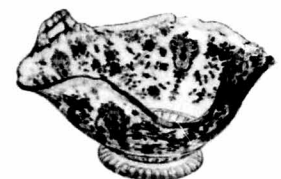
3500/15



3400/1181



3400/90



3500/55



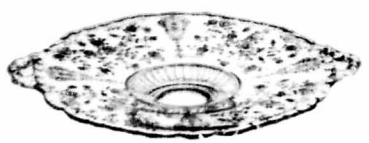
3500/69



3400/1180



3500/54



3500/161



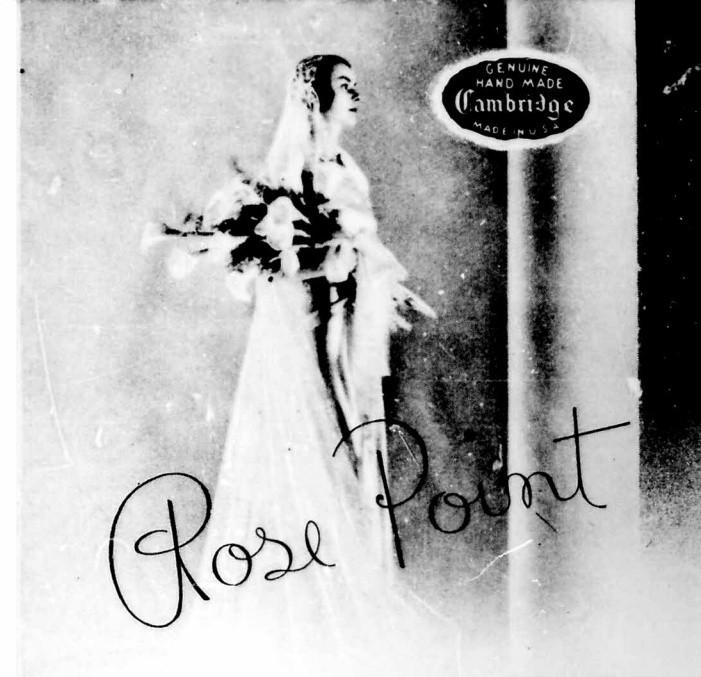
3500 10 oz. Goblet 3500 7 oz. Tall Sherbet 3500 3 oz. Cocktail 3500 12 oz. Ftd. Ice Tea



3500 18 oz. Ftd. Tumbler 3500 7 oz. Low Sherbet 3500 4 1/2 oz. Oyster Cocktail 3500 4 1/2 oz. Claret



3500 5 oz. Ftd. Tumbler 3500 2 1/2 oz. Wine 3500 1 oz. Cordial 3500 5 oz. Cafe Parfait 3500/101 5 3/4 in. Tall Comport

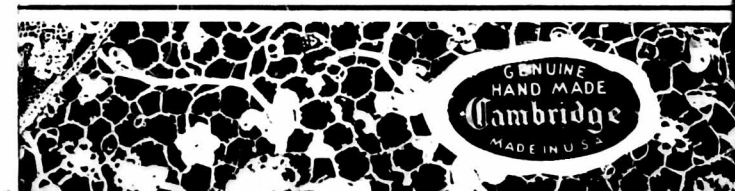


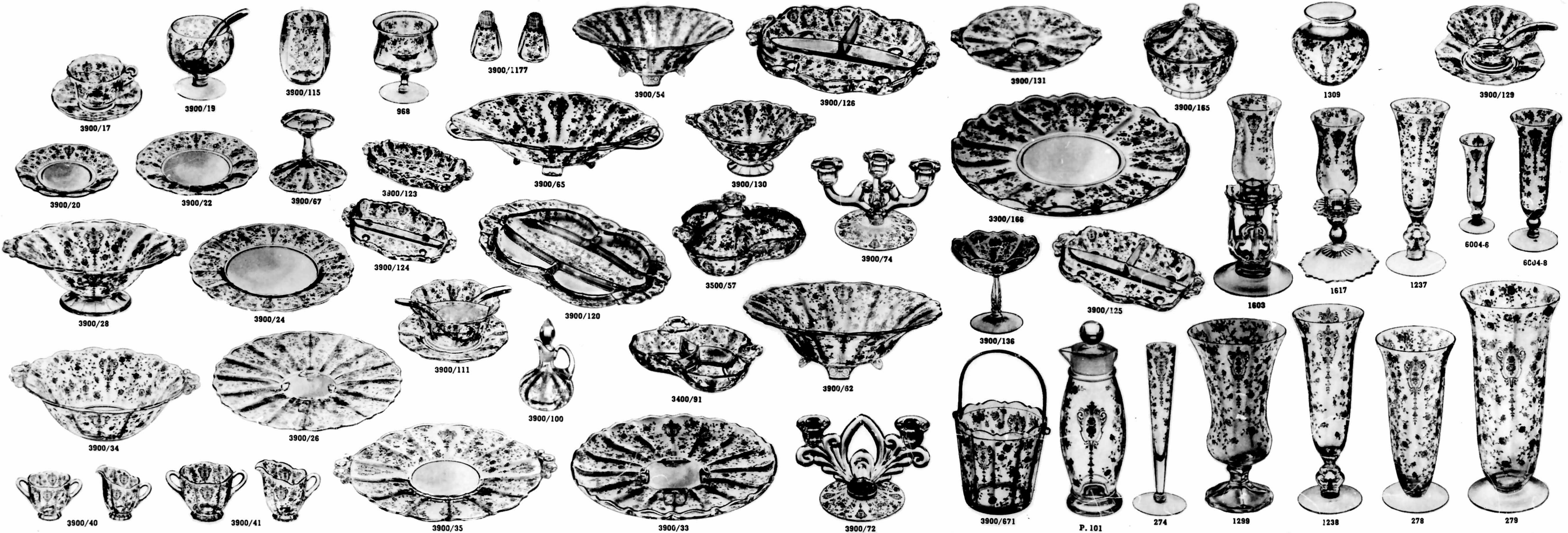
A magic word—a word to conjour visions! Brides of Yesterday in hoop skirts! Brides of Today in slender silhouettes! Brides of royal blood, resplendent, glorified, adorned for the altar in bridal veils of rose point lace!

Rose Point lace is made entirely by hand by the peasants of Belgium, requiring infinite skill and patience. Years are sometimes required to complete a single pattern, and many hands have a part in the making. The finest of cotton thread is used and so delicate is the design that magnifying glasses are worn by the workers. It is never washed, as water would destroy its perfect texture. The younger generation of Belgians have neither the patience nor the inclination to perform so tedious a task, so Rose Point lace is becoming increasingly rare.

And here is another Rose Point luxury for brides, less rare, less costly, but beautiful and distinctive—CAMBRIDGE ROSE POINT CRYSTAL!

THE CAMBRIDGE GLASS COMPANY, CAMBRIDGE, OHIO





3900/17

3900/19

3900/115

968

3900/1177

3900/54

3900/126

3900/131

3900/165

1309

3900/129

3900/20

3900/22

3900/67

3900/123

3900/65

3900/130

3300/166

3900/74

6004-6

6004-8

3900/28

3900/24

3900/124

3900/120

3500/57

3900/74

3300/166

3900/125

1603

1617

1237

3900/34

3900/26

3900/111

3900/100

3400/91

3900/62

3900/136

3900/125

1603

1617

1237

3900/40

3900/41

3900/35

3900/33

3900/72

3900/671

P. 101

274

1299

1238

278

279