

LIST OF PORTIA ITEMS



477



3500/15



3121
10 oz. Goblet



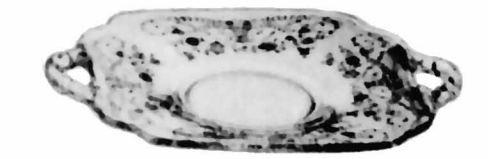
3121
6 oz. Tall Sherbet



3121
3 oz. Cocktail



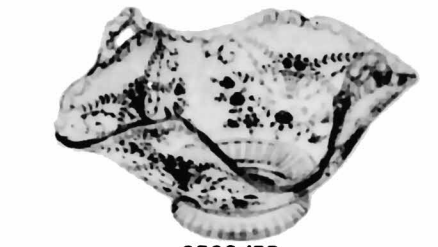
3121
12 oz. Ftd. Ice Tea



3400/1181



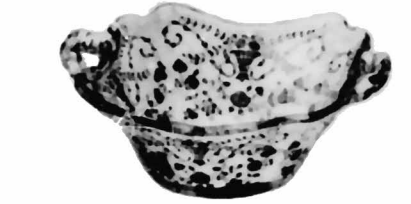
3400/90



3500/55



3500/69



3400/1180



3500/54



3500/161



3121
10 oz. Ftd. Tumbler



3121
6 oz. Low Sherbet



3121
3 1/2 oz. Wine



3121
5 oz. Cafe Parait



3121
5 oz. 1 oz. Tumbler



3121
4 1/2 oz. Cordial



3121
5 3/4 oz. Oyster Cocktail



3121
5 3/4 in. Blown Comport

- 3121 10 oz. Goblet
- 3121 6 oz. Tall Sherbet
- 3121 3 oz. Cocktail
- 3121 3 1/2 oz. Wine
- 3121 4 1/2 oz. Oyster Cocktail
- 3121 1 oz. Cordial
- 3121 5 oz. Cafe Parait
- 3121 12 oz. Ftd. Ice Tea
- 3121 10 oz. Ftd. Tumbler
- 3121 5 oz. Ftd. Tumbler
- 477 9 1/2 in. Pickle
- 3400/1180 5 1/4 in. 2 Hdl. Bonbon
- 3400/1181 6 in. 2 Hdl. Plate
- 3400/90 6 in. 2 part Relish
- 3500/15 Ind. Sugar & Cream
- 3500/54 6 in. 2 Hdl. Ftd. Bonbon
- 3500/54 6 in. 2 Hdl. Ftd. Basket
- 3500/69 6 1/2 in. 3 part Relish
- 3500/161 8 in. 2 Hdl. Ftd. Plate
- 3400/91 8 in. 3 part Relish
- 3500/57 8 in. 3 part Candy Box & Cover (not illus.)
- 3900/17 Cup & Saucer
- 3900/19 2 pc. Mayonnaise Set
- 3900/20 6 1/2 in. Bread & Butter Plate
- 3900/22 8 in. Salad Plate
- 3900/24 10 1/2 in. Dinner Plate
- 3900/26 12 in. 4 Ftd. Plate
- 3900/28 11 1/2 in. Ftd. Bowl
- 3900/33 13 in. 4 Ftd. Torte Plate, R.E.
- 3900/34 11 in. 2 Handled Bowl
- 3900/35 13 1/2 in. 2 Handled Cake Plate
- 3900/40 Ind. Sugar & Cream
- 3900/41 Sugar & Cream
- 3900/54 10 in. 4 Ftd. Bowl, flared
- 3900/62 12 in. 4 Ftd. Bowl, flared
- 3900/65 12 in. 4 Ftd. Oval Bowl
- 3900/67 5 in. Candlestick
- 3900/72 6 in. 2 lite Candlestick
- 3900/74 6 in. 3 lite Candlestick
- 3900/100 6 oz. Oil, q.s.
- 3900/111 4 pc. Mayonnaise Set
- 3900/115 13 oz. Tumbler
- 3900/120 12 in. 5 part Celery & Relish
- 3900/123 7 in. Relish or Pickle
- 3900/124 7 in. 2 part Relish
- 3900/125 9 in. 3 part Celery & Relish
- 3900/126 12 in. 3 part Celery & Relish
- 3900/129 3 pc. Mayonnaise Set
- 3900/130 7 in. 2 handled Ftd. Bonbon
- 3900/131 8 in. 2 handled Ftd. Bonbon Plate
- 3900/136 5 1/2 in. Comport
- 3900/165 Candy Box & Cover
- 3900/166 14 in. Plate, r. e.
- 3900/671 Ice Bucket
- 3900/671 Ice Bucket with chrome Handle
- 3900/1177 Chrome Ice Tongs (long)
- 274 Salt & Pepper Shaker (doz.)
- 278 10 in. Bud Flower Holder
- 279 11 in. Ftd. Flower Holder
- 968 13 in. Ftd. Flower Holder
- 1237 2 pc. Cocktail Icer
- 1238 9 in. Ftd. Flower Holder
- 1299 12 in. Ftd. Flower Holder
- 1309 11 in. Ftd. Flower Holder
- 1603 5 in. Glode Flower Ho'der
- 1617 Hurricane Lamp (Etch. Chimney only)
- 3121 Hurricane Lamp (Etch. Chimney only)
- 6004 5-3/8 in. Blown Comport
- 6004 6 in. Ftd. Flower Holder
- 6004 8 in. Ftd. Flower Holder
- P. 101 Cocktail Shaker (Patent—D133,198)



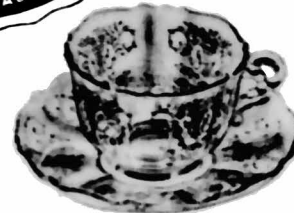
1321/7966 7 pc. Sherry Set
 1321 28 oz. Ftd. Decanter
 7966 2 oz. Sherry
 P. 101/7801 7 pc. Cocktail Set
 P. 101 32 oz. Cocktail Shaker (Pat. No. D-133,193)
 7801 4 oz. Cocktail



Portia

GENUINE
HAND MADE
Cambridge
MADE IN U.S.A.

GENUINE
HAND MADE
Cambridge
MADE IN U.S.A.



3900/17



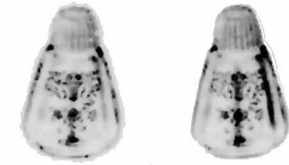
3900/19



3900/115



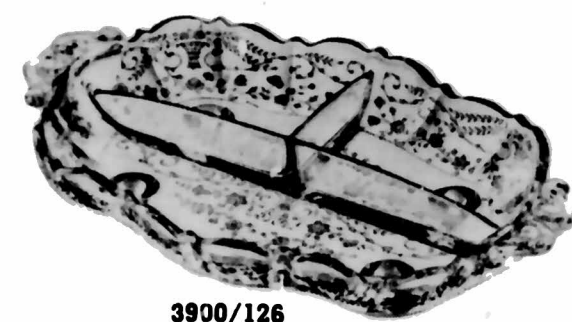
968



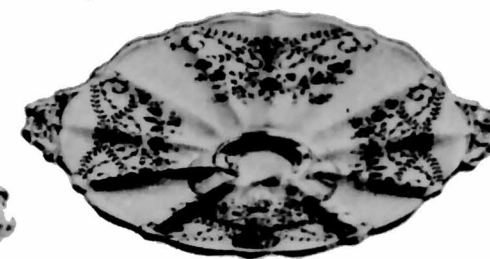
3900/1177



3900/54



3900/126



3900/131



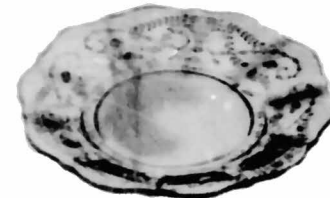
3900/165



1309



3900/129



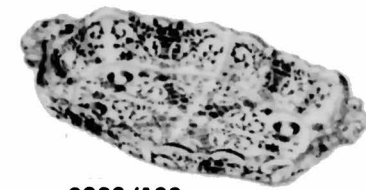
3900/20



3900/22



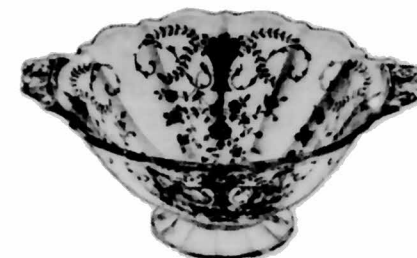
3900/67



3900/123



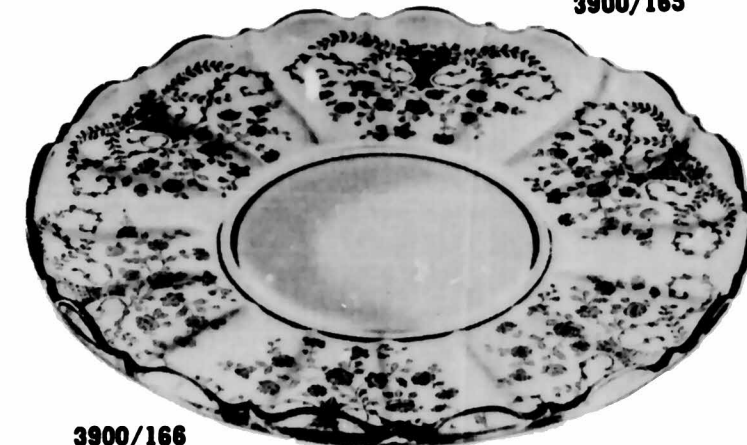
3900/65



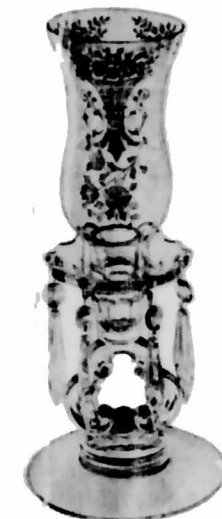
3900/130



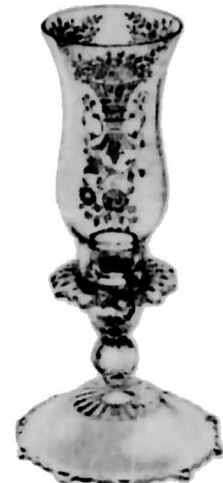
3900/136



3900/166



1603



1617



1237



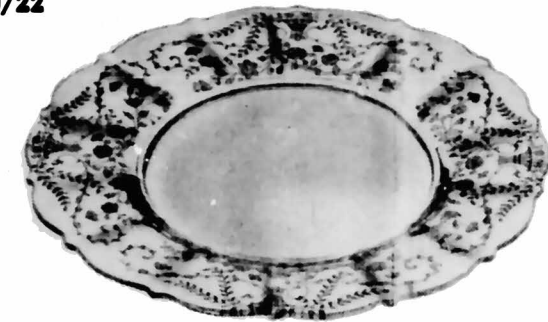
6004-6



6004-8



3900/28



3900/24



3900/124



3900/120



3900/62



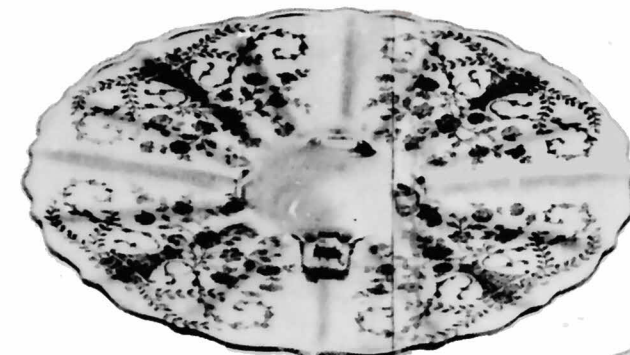
3900/74



3900/125



3900/34



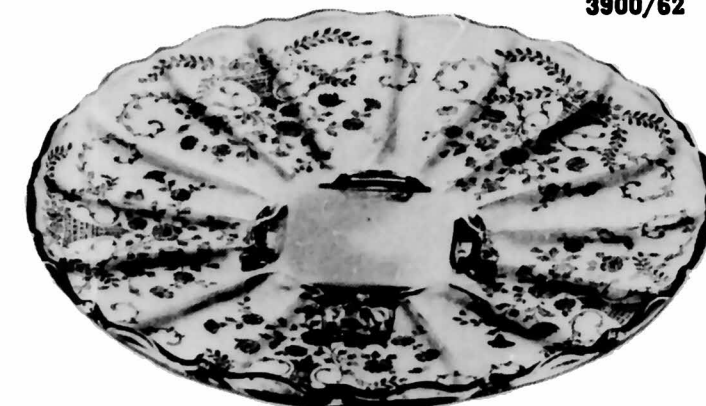
3900/26



3900/111



3900/100



3900/33



3900/72



3900/671



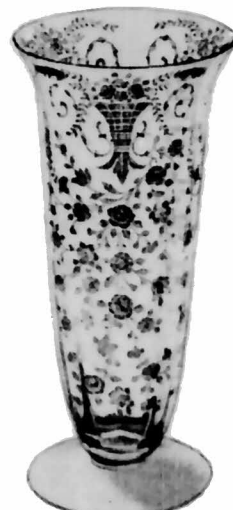
274



1299



1238



278



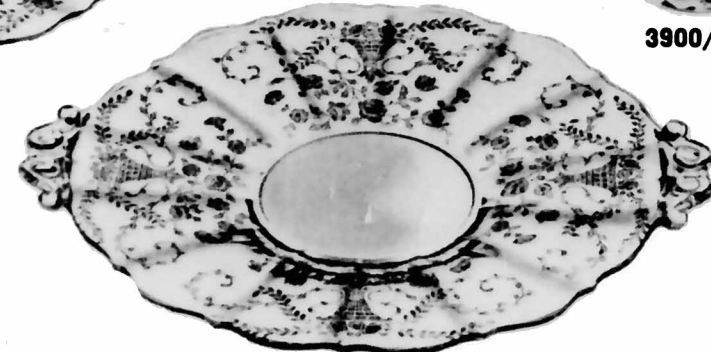
279



3900/40



3900/41



3900/35