



P. 668
6 in. Bread & Butter Plate



P. 556
8 in. Salad Plate



P. 933
Cup & Saucer



P. 360
Salt & Pepper w/chrome tops



P. 253
Individual Sugar & Cream



P. 253/37
3 Pc. Sugar & Cream Set



3900/37
Sugar & Cream Tray



P. 2936
6 oz. Oil



P. 254
Sugar & Cream



3790 Goblet



3790 Sherbet



3790 Cocktail



3790 Claret



3790 Cordial



3790 Wine



3790
12 oz. Ftd. Ice Tea



3790
5 oz. Ftd. Juice



3790
Oyster Cocktail

ETCHED MAGNOLIA

3790 Goblet
 3790 Sherbet
 3790 Cocktail
 3790 Claret
 3790 Wine
 3790 Cordial
 3790 Oyster Cocktail
 3790 12 oz. Ftd. Ice Tea
 3790 5 oz. Ftd. Juice

P.933 Cup and Saucer
 P.668 6 in. Bread and Butter Plate
 P.556 8 in. Salad Plate

P.54 6½ in. L. F. Comport
 P.55 6 in. L. F. Basket
 P.56 8 in. L. F. Plate

P.101 Cocktail Shaker (Pat. D-133198)
 P.166 13½ in. Plate, r. e.
 P.214 10 in. 3 part Relish
 P.247 11 in. Celery

P.253 Ind. Sugar and Cream
 P.253/37 3 Pc. Sugar & Cream Set
 P.254 Sugar and Cream
 P.293 6 oz. Oil

P.306 Candy Box and Cov.—cut knob
 P.360 Salt & Pepper w/chr. top
 P.384 11 in. Oval Bowl
 P.430 12 in. Bowl, Belled

P.1491 4 pc. Twin S. D. Set
 P.1495 11½ in. 2 hdl. Cake Plate
 P.1497 6 in. 2 part Relish
 P.1498 8 in. 3 part Relish
 P.1532 3 pc. Mayonnaise Set

3400/141 76 oz. Jug
 3400/1180 5¼ in. 2 Hdl. Bonbon
 3400/1181 6 in. 2 Hdl. Bonbon Plate

3900/19 2 pc. Mayonnaise Set
 3900/37 Sugar & Cream Tray
 3900/72 6 in. 2 Lite Candlestick
 3900/114 32 oz. Martini Jug

278 11 in. Ftd. Vase
 628 3½ in. Candlestick
 6004 8 in. Ftd. Vase

THE CAMBRIDGE GLASS COMPANY
 CAMBRIDGE, OHIO



Magnolia

GENUINE
 HAND MADE
 Cambridge
 MADE IN U.S.A.



3900/19
2 Pc. Mayonnaise Set



P. 15 1/2
3 Pc. Mayo. naise Set



P. 54
6 1/2 in. L.F. Comport



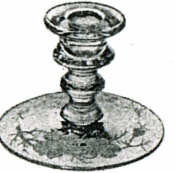
P. 55
6 in. L.F. Basket



P. 247
11 in. Celery



P. 384
11 in. Oval Bowl



628
3 1/2 in. Candlestick



P. 1491
4 Pc. Twin Salad Dressing Set



P. 56
8 in. L.F. Plate



P. 1497
6 in. 3 Part Relish



P. 214
10 in. 3 Part Relish



P. 306
Candy Box & Cover



P. 430
12 in. Bowl, belled



3400/1180
5 1/4 in. 2 Hdl. Bonbon



3400/1181
6 in. 2 Hdl. Bonbon Plate



3900/114
32 oz. Martini Jug



P. 1498
8 in. 3 Part Relish



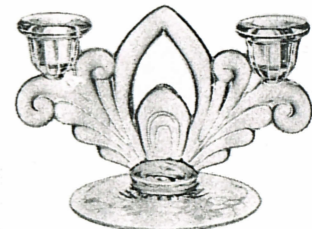
P. 101
Cocktail Shaker
(Pat. D 133198)



6004
8 in. Ftd. Vase



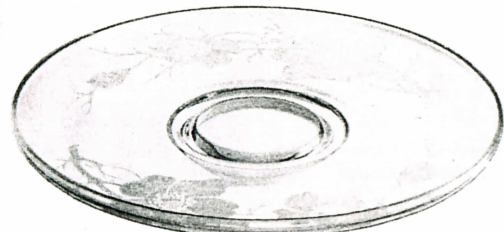
278
11 in. Ftd. Vase



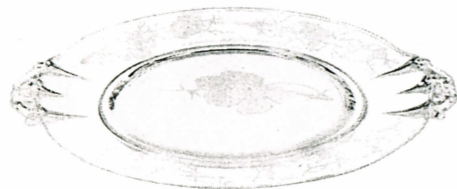
3900/72
6 in. 2 lite Candlestick



3400/141
76 oz. Jug



P. 166
13 1/2 in. Plate, re.



P. 1495
11 1/2 in. 2 Hdl. Cake Plate