



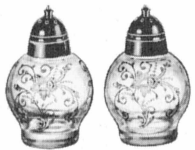
P. 248
11 in. Celery



P. 254
Sugar & Cream



P. 293
6 oz. Oil



P. 360
Salt & Pepper w/Chrome tops



P. 253
Individual Sugar & Cream



532
6 in. Tall Compot



P. 306
6 in. Candy Box & Cover, cut knob



3779
9 oz. Tall Goblet



3779
6 oz. Tall Sherbet



3779
6 oz. Low Sherbet



3779
9 oz. Low Goblet



3779
3 oz. Cocktail



3779
2 1/2 oz. Wine



3779
4 1/2 oz. Claret



3779
4 1/2 oz.
Oyster Cocktail



3779
1 oz.
Cordial



3779
5 oz. Ftd.
Tumbler



3779
12 oz. Ftd.
Ice Tea

ETCHED DAFFODIL

Inspired by one of the most beautiful of spring flowers... Daffodil... etched in brilliant American hand-made Cambridge crystal for your finest table.

- 3779 9 oz. Tall Goblet
- 3779 6 oz. Tall Sherbet
- 3779 9 oz. Low Goblet
- 3779 6 oz. Low Sherbet
- 3779 3 oz. Cocktail
- 3779 2 1/2 oz. Wine
- 3779 4 1/2 oz. Oyster Cocktail
- 3779 4 1/2 oz. Claret
- 3779 1 oz. Cordial
- 3779 12 oz. Ftd. Ice Tea
- 3779 5 oz. Ftd. Tumbler
- 1176 8 1/2 in. Salad Plate
- P. 54 6 1/2 in. 2 Hdl. Low Ftd. Compot
- P. 55 6 in. 2 Hdl. Low Ftd. Basket
- P. 56 8 in. 2 Hdl. Low Ftd. Plate
- P. 166 13 1/2 in. Cabaret Plate, r.e.
- P. 214 10 in. 3 part Relish
- P. 248 11 in. Celery
- P. 253 Ind. Sugar & Cream
- P. 254 Sugar & Cream
- P. 293 6 oz. Oil
- P. 306 6 in. Candy Box & Cover
- P. 360 Salt & Pepper, chrome top
- P. 384 11 in. Oval Bowl
- P. 430 12 in. Bowl, belled
- P. 532 6 in. Tall Compot
- P. 533 3 pc. Mayonnaise Set
- P. 533 5 1/2 in. Compot
- P. 533/445 2 pc. Mayon. Set
- P. 1491 4 pc. Twin Salad Dressing Set
- P. 1495 11 1/2 in. 2 Hdl. Cake Plate
- 3400/141 76 oz. Jug
- 3400/1180 5 1/4 in. 2 Hdl. Bonbon
- 3400/1181 6 in. 2 Hdl. Bonbon Plate
- 3900/72 6 in. 2 lite Candlestick
- 278 11 in. Ftd. Vase
- 628 3 1/2 in. Candlestick
- 6004 8 in. Ftd. Vase

THE CAMBRIDGE GLASS COMPANY
CAMBRIDGE, OHIO

DAFFODIL





P. 533
3 pc. Mayonnaise Set



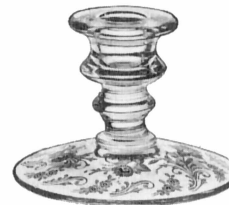
P. 54
6½ in. 2 Hdl. Low Ftd. Comport



P. 1491
4 pc. Twin Salad Dressing Set



3900/72
6 in. 2 lite Candlestick



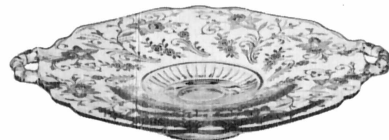
628
3½ in. Candlestick



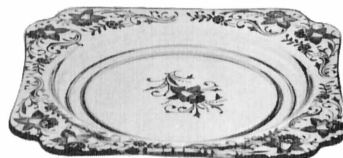
P. 55
6 in. 2 Hdl. Low Ftd. Basket



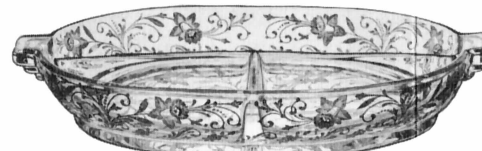
3400/141
76 oz. Jug



P. 56
8 in. 2 Hdl. Low Ftd. Plate



1176
8½ in. Salad Plate



P. 214
10 in. 3 part Relish



P. 533/445
2 pc. Mayonnaise Set



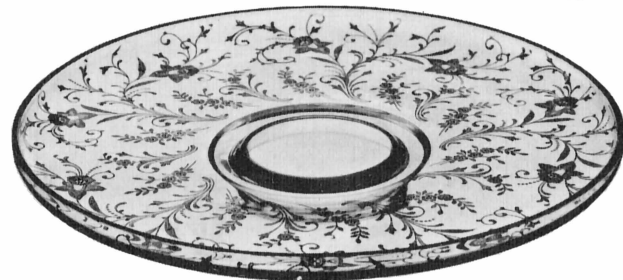
P. 533
5½ in. Comport



3400/1181
6 in. 2 Hdl. Bonbon Plate



P. 430
12 in. Bowl, belled



P. 166
13½ in. Cabaret Plate, r.e.



1495—11½ in. 2 Hdl.
Cake Plate



278
11 in. Vase, Ftd.



6004
8 in Ftd. Vase



P. 384
11 in. Oval Bowl



3400/1180
5¼ in. Bonbon, 2 Hdl.