

**LIST OF CANDLELIGHT ITEMS**

- 3776 9 oz. Goblet (Optic)
- 3776 7 oz. Tall Sherbet (Optic)
- 3776 7 oz. Low Sherbet (Optic)
- 3776 3 oz. Cocktail (Optic)
- 3776 3 1/2 oz. Wine (Optic)
- 3776 4 1/2 oz. Claret (Optic)
- 3776 4 1/2 oz. Oyster Cocktail (Optic)
- 3776 1 oz. Cordial (Optic)
- 3776 12 oz. Ftd. Ice Tea (Optic)
- 3776 5 oz. Ftd. Tumbler Cup & Saucer (Optic)
- 3900/17 2 pc. Mayonnaise Set
- 3900/19 6 1/2 in. Bread & Butter Plate
- 3900/22 8 in. Salad Plate
- 3900/24 10 1/2 in. Dinner Plate
- 3900/26 12 in. 4 Ftd. Plate
- 3900/28 11 1/2 in. Ftd. Bowl
- 3900/33 13 in. 4 Ftd. Torte Plate, R.E.
- 3900/34 11 in. 2 Handled Bowl
- 3900/35 13 1/2 in. 2 Handled Cake Plate
- 3900/38 3 pc. Sugar & Cream Set (Ind.)
- \*3900/39 (37-Plain Tray & 40 Sugar & Cream)
- 3900/40 3 pc. Sugar & Cream Set (37-Plain Tray & 41 Sugar & Cream)
- 3900/41 Ind. Sugar & Cream Sugar & Cream
- 3900/54 10 in. 4 Ftd. Bowl, flared
- 3900/62 12 in. 4 Ftd. Bowl, flared
- 3900/65 12 in. 4 Ftd. Oval Bowl
- 3900/67 5 in. Candlestick
- 3900/72 6 in. 2 lite Candlestick
- 3900/74 6 in. 3 lite Candlestick
- 3900/100 6 oz. Oil, g.s.
- 3900/111 4 pc. Mayonnaise Set
- 3900/115 13 oz. Tumbler
- 3900/120 12 in. 5 part Celery & Relish
- 3900/123 7 in. Relish or Pickle
- 3900/124 7 in. 2 part Relish
- 3900/125 9 in. 3 part Celery & Relish
- 3900/126 12 in. 3 part Celery & Relish
- 3900/129 3 pc. Mayonnaise Set
- 3900/130 7 in. 2 Handled Ftd. Bonbon
- 3900/131 8 in. 2 Handled Ftd. Bonbon Plate
- \*3900/135 5 in. Comport
- \*3900/135 13 1/2 in. Cheese & Cracker
- 3900/136 5 1/2 in. Comport
- 3900/165 Candy Box & Cover
- 3900/166 14 in. Plate, r.e.
- 3900/671 Ice Bucket
- 3900/671 Ice Bucket with chrome Handle
- 3900/1177 Chrome Ice Tongs (long)
- 274 Sait & Pepper Shaker (dor. pr.)
- 278 10 in. Bud Flower Holder
- 279 11 in. Ftd. Flower Holder
- 279 13 in. Ftd. Flower Holder
- \*646 5 in. Candlestick
- \*647 6 in. 2-lite Candlestick
- 968 2 pc. Cocktail Icer
- 1237 9 in. Ftd. Flower Holder
- 1238 12 in. Ftd. Flower Holder
- 1299 11 in. Ftd. Flower Holder
- 1309 5 in. Glode Flower Holder
- \*1338 6 in. 3-lite Candlestick
- 1603 Hurricane Lamp (Etch. Chimney Only)
- 1617 Hurricane Lamp (Etch. Chimney Only)
- \*1321 5-1/3 in. Blown Comport
- 6004 6 in. Ftd. Flower Holder
- 6004 8 in. Ftd. Flower Holder
- 1613 Hurricane Lamp
- \*1321 28 oz. Ftd. Decanter
- \*796 2 oz. Sherry
- \*1321/796 7 pc. Sherry Set
- \*P. 101 36 oz. Cocktail Shaker (Patent D-133198)
- \*7801 4 oz. Cocktail
- \*P. 101/7801 7 pc. Cocktail Set
- \*3400/4 12 in. 4 Ftd. Bowl, Flared
- \*3400/48 11 in. 4 Ftd. Bowl, Fancy Edge
- \*3400/52 5 in. Butter & Cover
- \*3400/71 3 in. 4 Ftd. Nut Cup
- \*3400/91 8 in. 3 Part Relish
- \*3400/160 12 in. 4 Ftd. Bowl, Oblong
- \*3500/57 3 Part Candy Box and Cover
- \* Not Illustrated



Modern table linens, China and silver, require glassware that blends into the general motif of the new fashions. "Candlelight" does that perfectly, it is modern without being modernistic and classic without being entirely Grecian.

This pattern will be available in open stock for many years, affording opportunity for additions and replacements.

**The Cambridge Glass Company**  
Cambridge, Ohio

*Candlelight*



GENUINE  
HAND MADE  
**Cambridge**  
MADE IN U.S.A.

GENUINE  
HAND MADE  
Cambridge  
MADE IN U.S.A.



3900/17



3900/19



3900/115



968



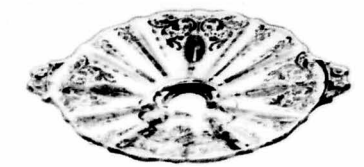
3900/1177



3900/54



3900/126



3900/131



3900/20



3900/22



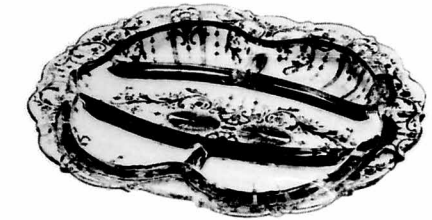
3900/28



3900/124



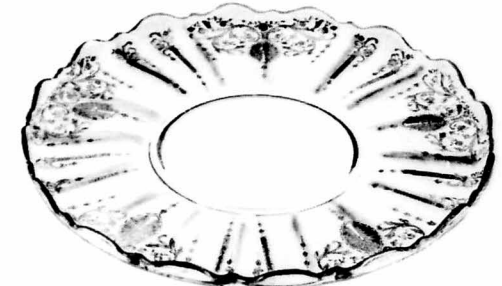
3900/123



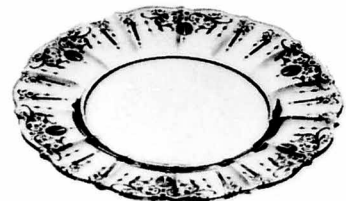
3900/120



3900/130



3900/166



3900/24



3900/111



3900/100



3900/65



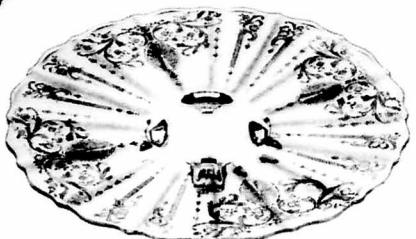
3900/62



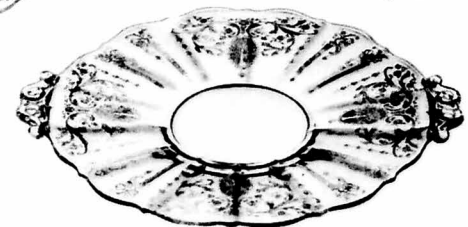
3900/125



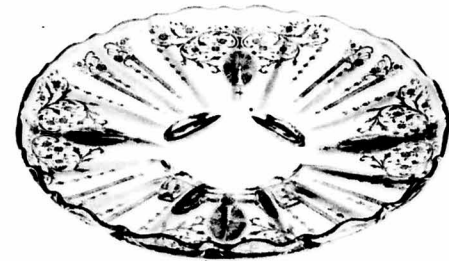
3900/34



3900/26



3900/35



3900/33



3900/72



3900/671



3900/67



3900/40



3900/41



3776  
9 oz. Goblet



3776  
7 oz. Tall Sherbet



3776  
7 oz. Low Sherbet



3776  
2 1/2 oz. Wine



3776  
3 oz. Cocktail



3776  
4 1/2 oz. Oyster  
Cocktail



3776  
12 oz. Ftd.  
Ice Tea



3776  
5 oz. Ftd.  
Tumbler



3776  
4 1/2 oz. Claret



3776  
1 oz. Cordial

