

MATS



Mat No. O

[Actual Size]

The Cambridge Glass Company
Cambridge, Ohio

No. 1



GENUINE
HAND MADE
Cambridge
MADE IN U.S.A.

Cambridge Glass
HAND MADE

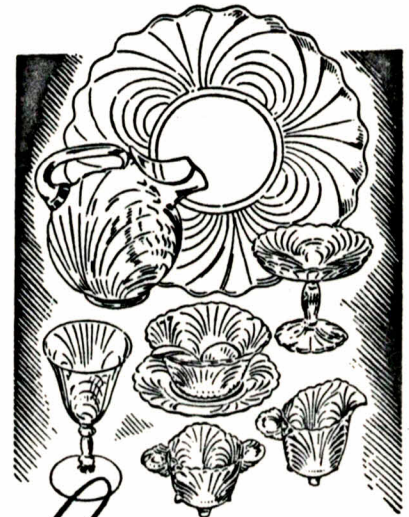
Caprice..

**CAPTURES THE WHIM
OF DANCING LIGHTS
FOR YOUR TABLE**

What a world of new beauty . . . crystal beauty . . . you'll discover in Caprice, America's most in-vogue glassware pattern. Brilliance, charm — an exquisite, graceful design that bespeaks your infinite good taste for truly gracious living. Yet Caprice is one of the most inexpensive and practical of patterns — unusually easy to clean and safe to handle. Select from more than 150 open-stock pieces—in Crystal, Moonlight Blue or LaRosa Pink. We are featuring Cambridge Etched and Cut Rock Crystal, also . . . in lovely designs you'll be proud to own.

**DEALER'S
NAME**

No. 2



Caprice..

**Crystal Beauty in a
SWIRL of LIGHT**

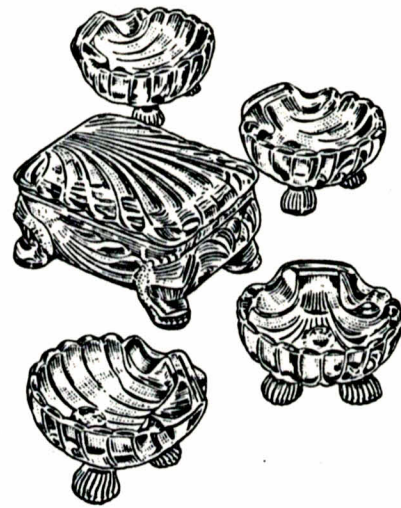
Like a sun-lit font welling from cool, quiet depths, Caprice fascinates the eye with brilliant, rippling beauty. A truly classic design by Cambridge, it is today's most popular pattern. Impressive in any setting, practical, modestly priced. Choose from over 150 open stock pieces in Crystal, Moonlight Blue, or La Rosa Pink. We shall also be glad to show you Cambridge Etched, Rock Crystal and Decorated patterns—each of them distinctive, hand-made creations of exclusive design.

**DEALER'S
NAME**

GENUINE
HAND MADE
Cambridge
MADE IN U.S.A.

Cambridge
HAND MADE GLASS

No. 4



CAPRICE

207/213—5 Pc. Smoker Set

No. 3



CAPRICE

- 300—Goblet
- 300—Tall Sherbet
- 22—Salad Plate

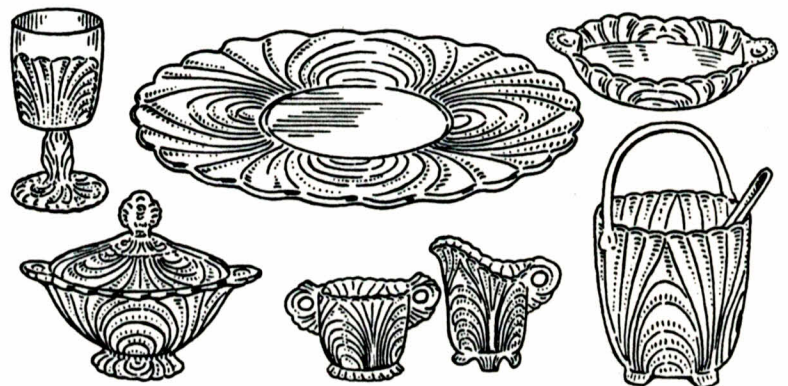
No. 6



No. 5



CAPRICE
124—Relish



CAPRICE

- | | |
|------------------|----------------|
| 70—Candlestick | 65—Bowl |
| 1—Goblet | 30—Plate |
| 120—Relish | 165—Candy Box |
| 41—Sugar & Cream | 201—Ice Bucket |

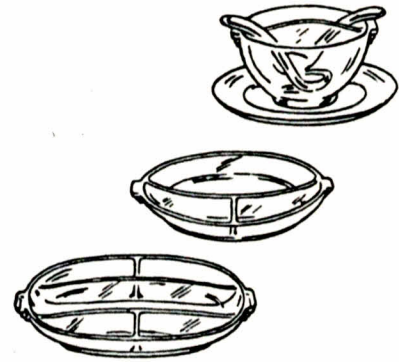
No. 7



PRISTINE

- 1—Goblet
- 2—Tall Sherbet
- 122—Salad Plate

No. 8



PRISTINE

- 287—Twin Salad Dressing Set
- 207—Relish
- 212—Relish

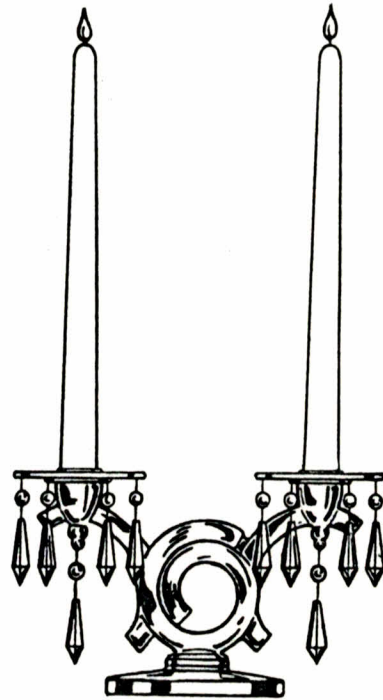
No. 9



PRISTINE

- 438/502—Console Set

No. 10



PRISTINE

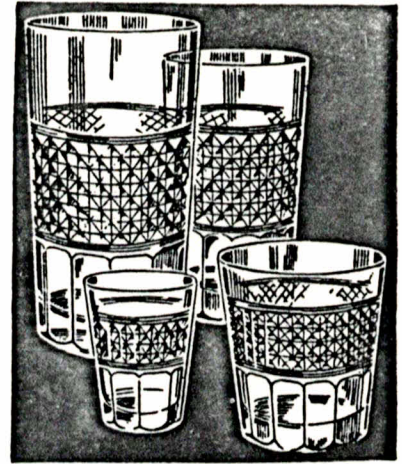
- 520—Candelabrum

No. 11



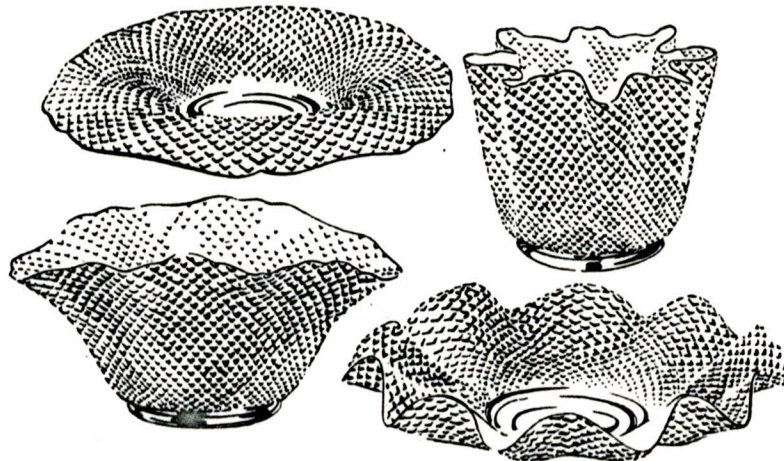
MOUNT VERNON
 Goblet
 Plate
 Sugar & Cream

No. 12



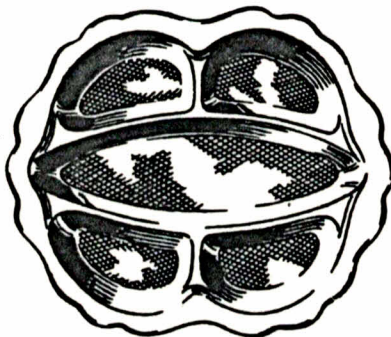
MOUNT VERNON
 Tumblers

No. 13



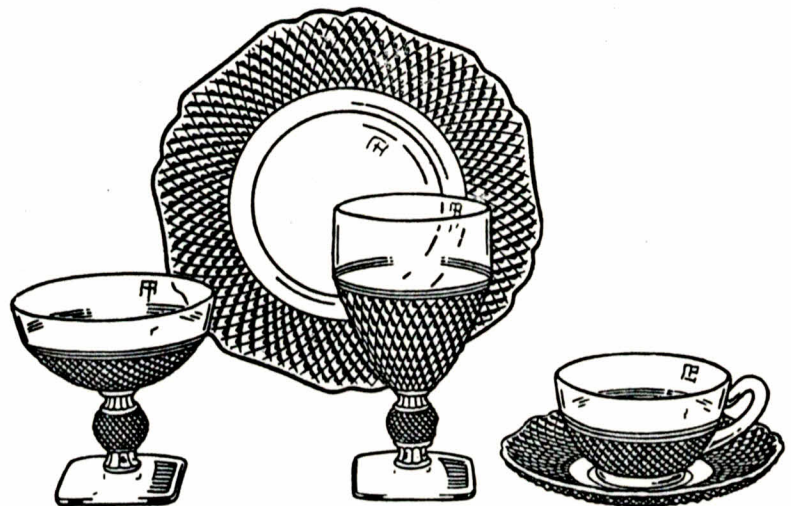
MOUNT VERNON
 Bowls, Plates

No. 14



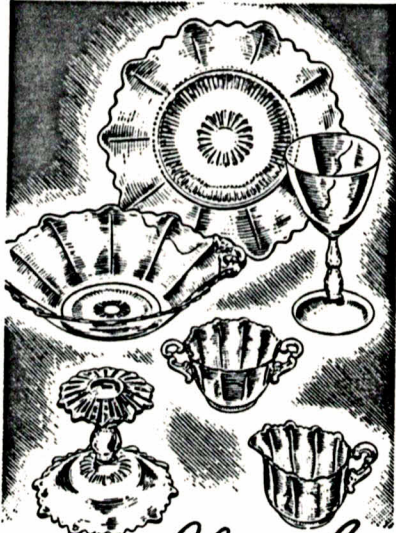
MT. VERNON
 104—Relish

No. 15



MT. VERNON
 1—Goblet
 2—Tall Sherbet
 5—Salad Plate
 7—Cup and Saucer

No. 16



Martha

**Exquisite New Creation
by CAMBRIDGE**

In its unusually distinctive lines, suggesting the beauty and symmetry of snow crystals, MARTHA achieves a simple elegance which has made it one of the most popular of all designs in hand-made glass. Lovely, light-weight and harmonizes readily with any table ensemble. Modestly priced . . . with full selection from over 150 pieces! See MARTHA and other smart Cambridge patterns in our glassware department today.



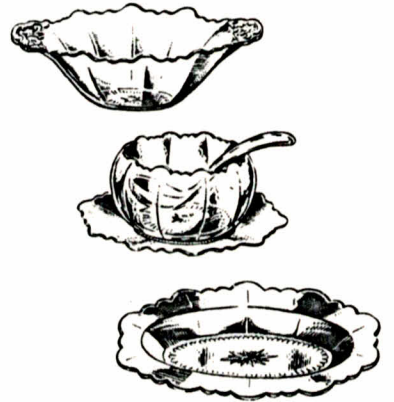
**DEALER'S
NAME**

*At left — two
new Cambridge
Etchings. Chan-
tilly and Bloss-
som Time.*



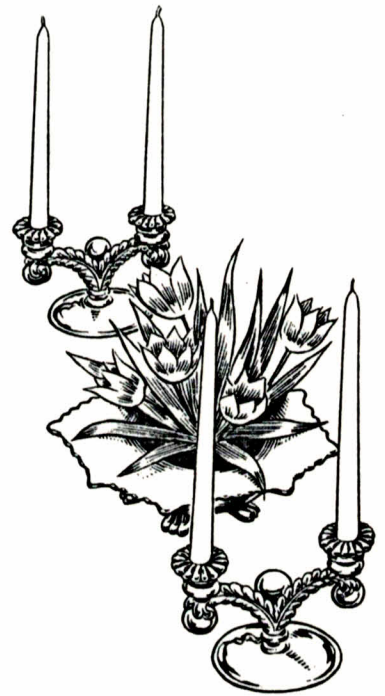
Cambridge
HAND MADE GLASS

No. 17



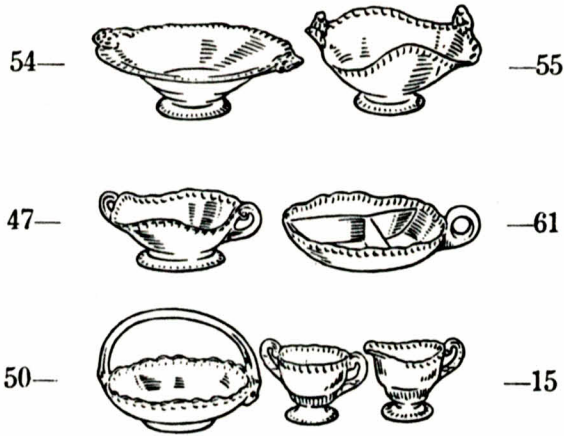
**MARTHA
Novelties**

No. 18



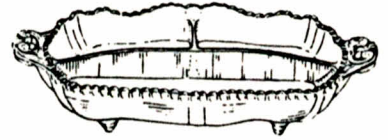
**MARTHA
Console Set**

No. 19



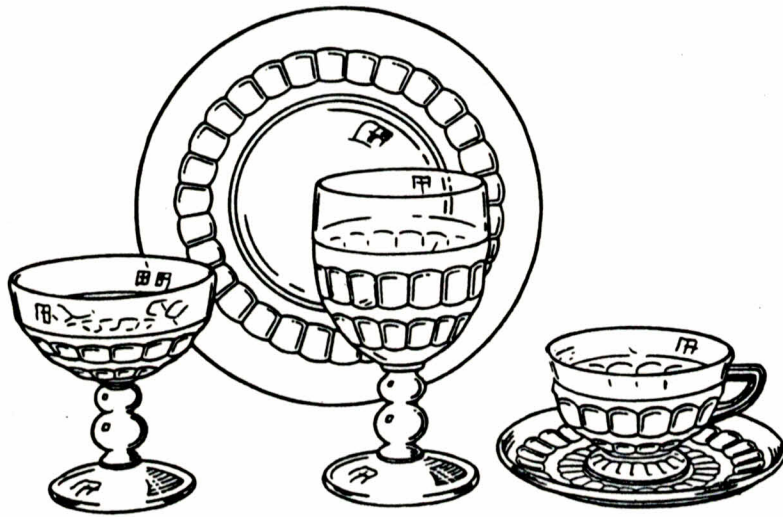
GADROON
3500—Novelty Group

No. 20



GADROON
3500/64—Relish

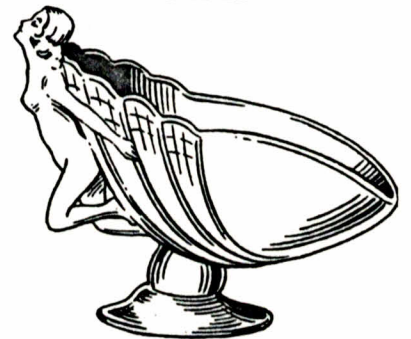
No. 21



MARTHA WASHINGTON

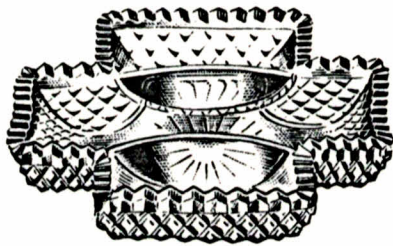
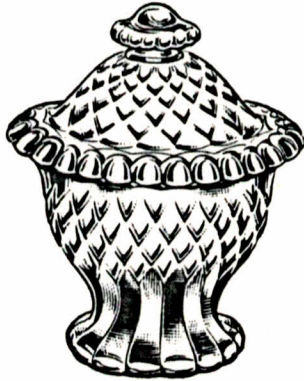
- No. 51—Goblet
- No. 45—Tall Sherbet
- No. 21—Salad Plate
- No. 42—Cup and Saucer

No. 22



SEA SHELL
40—Bowl

No. 23



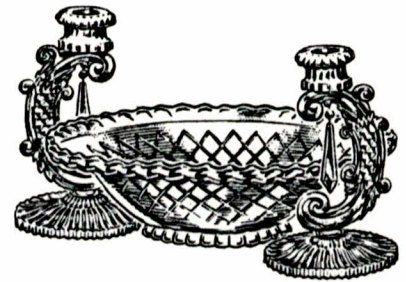
VIRGINIAN

No. 24



VIRGINIAN
Stemware & Plate

No. 25



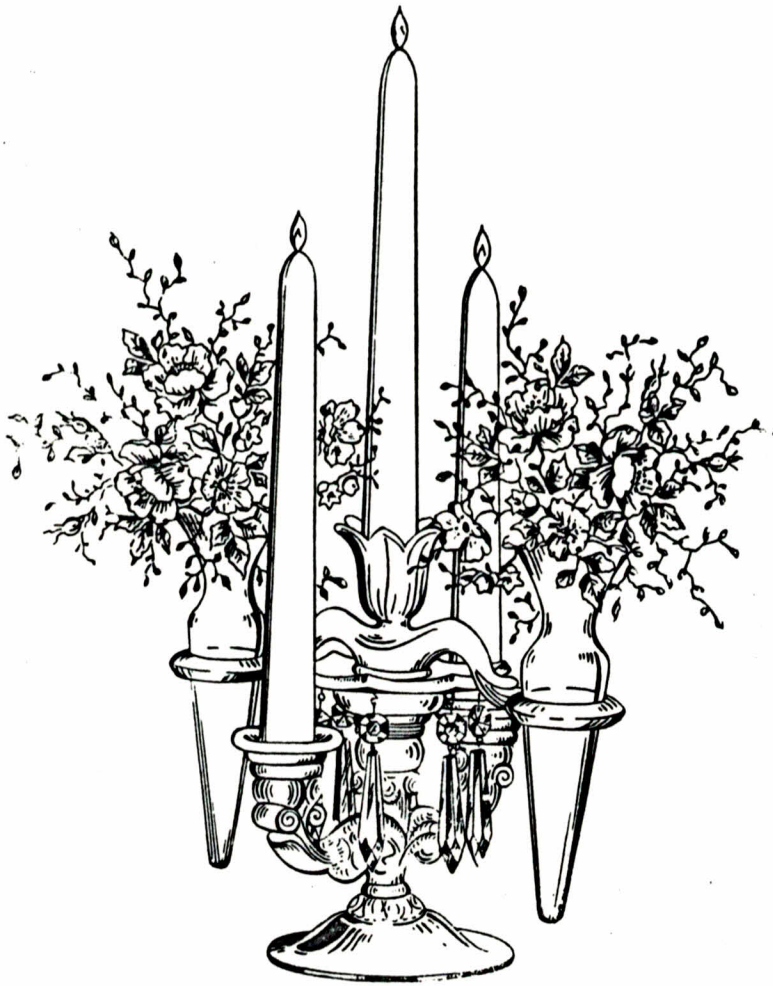
VIRGINIAN
Console Set

No. 26



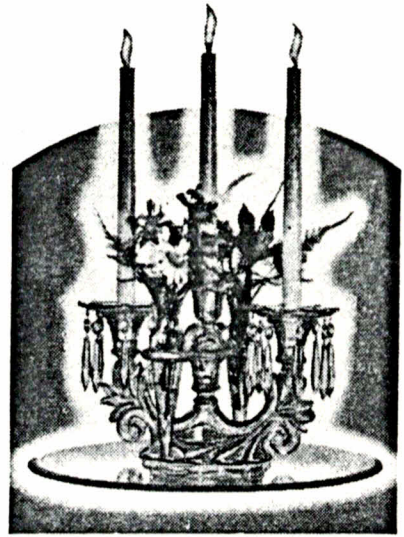
VIRGINIAN
Cake Salver

No. 27



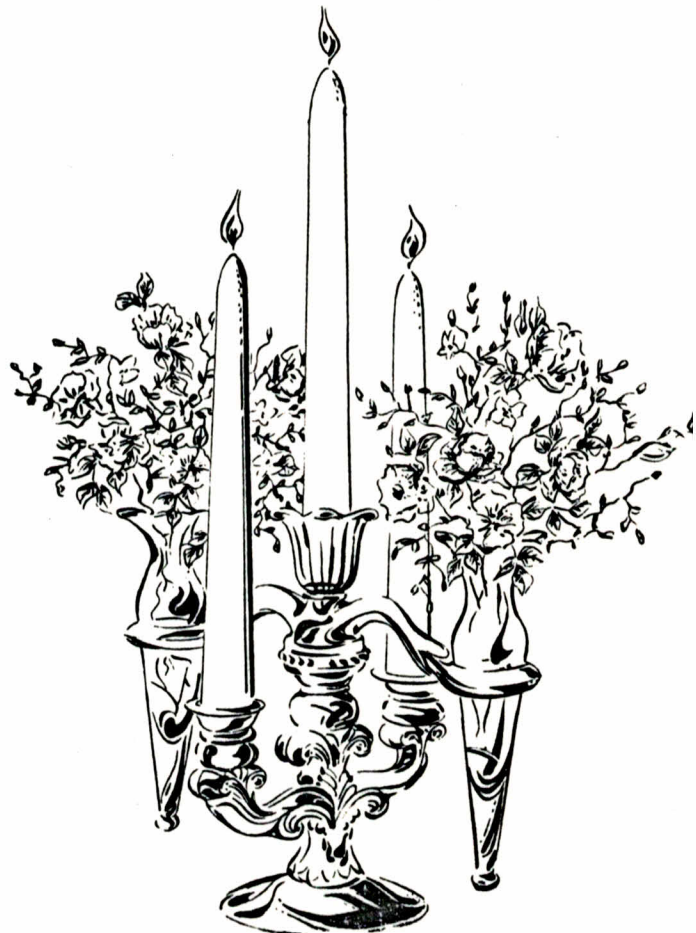
645—EPERGNE

No. 28



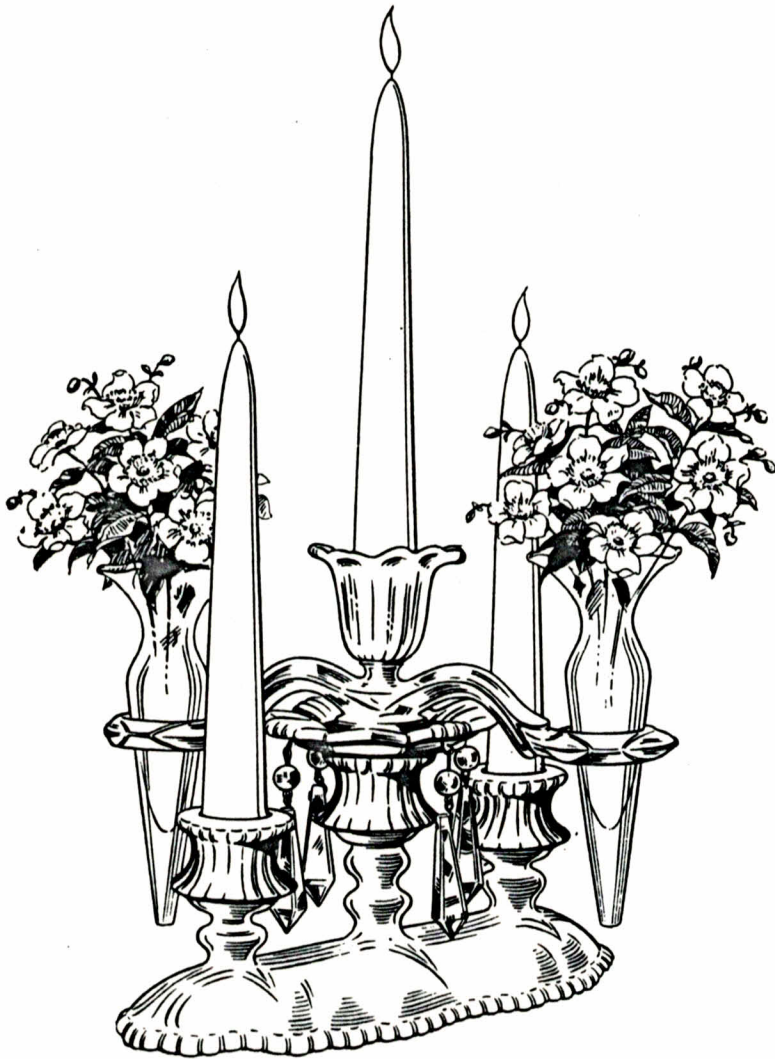
1358—EPERGNE

No. 29



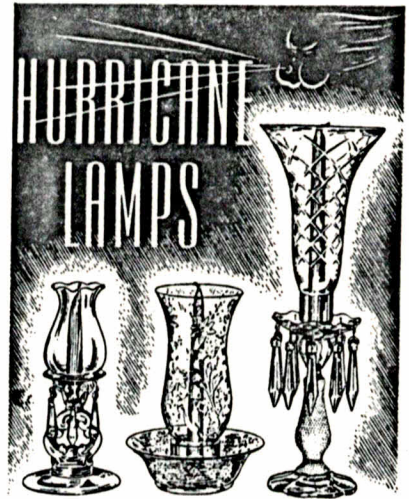
663—EPERGNE

No. 30



76—EPERGNE

No. 31



In Cambridge Crystal

With its antique-like charm, the Hurricane Lamp achieves a new and more decorative importance in today's interior settings. Here are three exclusive designs from a wide selection of interesting types and sizes, all hand-made in brilliant Cambridge Crystal. Prices are so surprisingly low you'll want at least two.



Epergnes

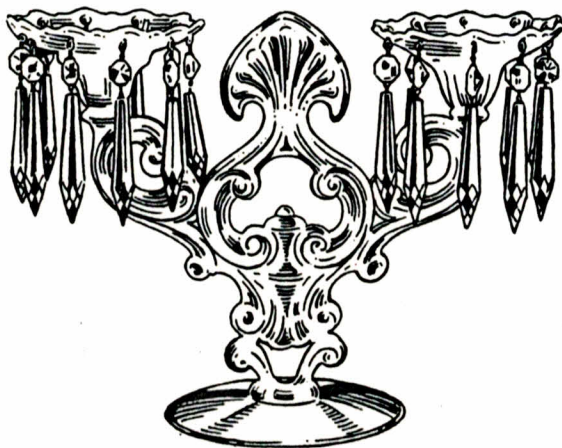
One of the many epergnes and candelabra created by Cambridge to glorify your table settings with crystal, candles and flowers. Lovely gifts!

DEALER'S NAME



Cambridge
HAND MADE GLASS

No. 32



1441—CANDELABRUM

No. 33



648—CANDLESTICK

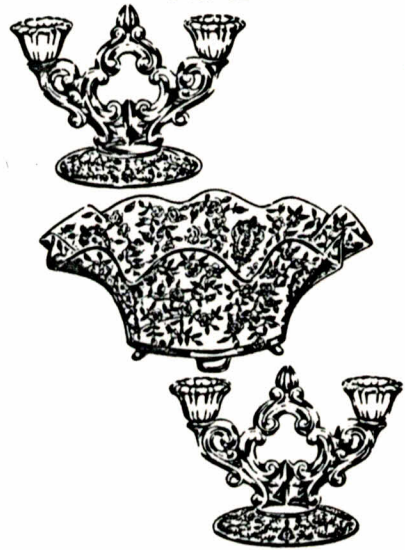
ETCHED ROSE POINT

No. 42



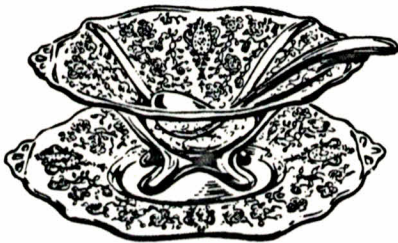
3121—STEMWARE

No. 43



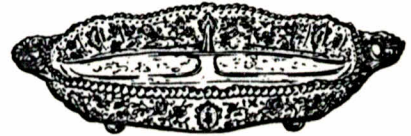
1349/647—CONSOLE SET

No. 44



3400/11—MAYONNAISE SET

No. 45



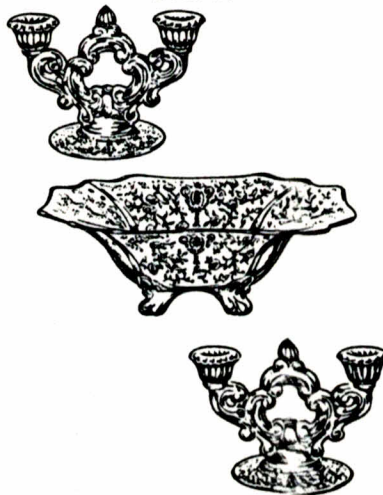
3500/64—RELISH

No. 46



3500—GOBLET

No. 47



3400/4/647—CONSOLE SET

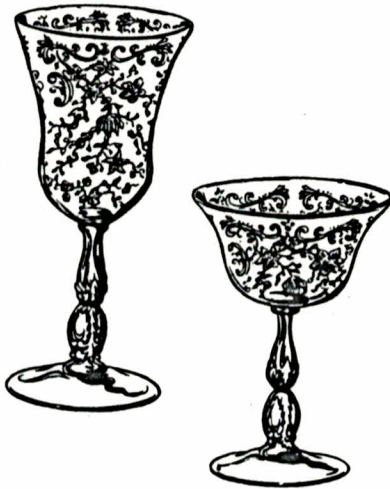
No. 48



3121—GOBLET

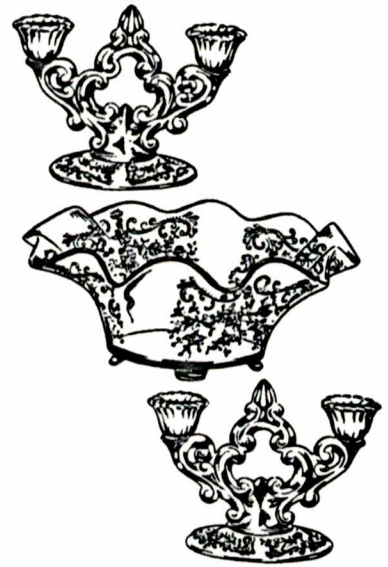
ETCHED CHANTILLY

No. 49



3600—STEMWARE

No. 50



1349/647—CONSOLE SET

No. 51



276—MAYONNAISE SET

No. 52



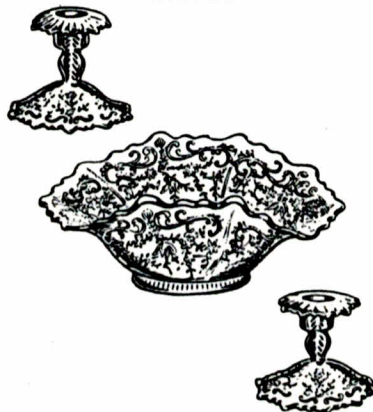
209—RELISH

No. 53



3600—GOBLET

No. 54



440/494—CONSOLE SET

3625—GOBLET



No. 55

No. 56



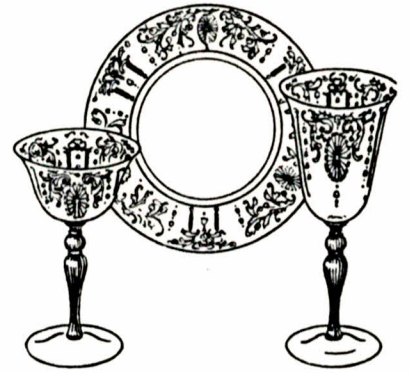
ETCHED WILDFLOWER
3121—Goblet

No. 57



ETCHED BLOSSOM TIME
3675—Goblet

No. 58



ETCHED CANDLELIGHT
3111—Stemware

No. 59



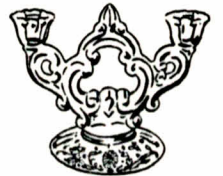
ETCHED WILDFLOWER
3400/4/647—Console Set

No. 60



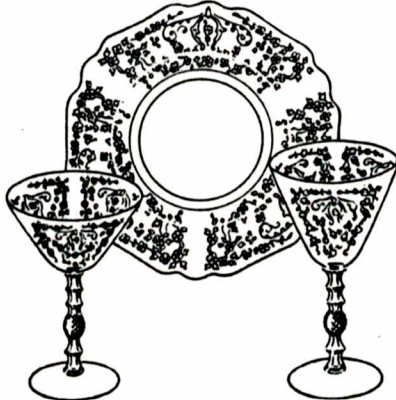
ETCHED BLOSSOM TIME
440/494—Console Set

No. 61



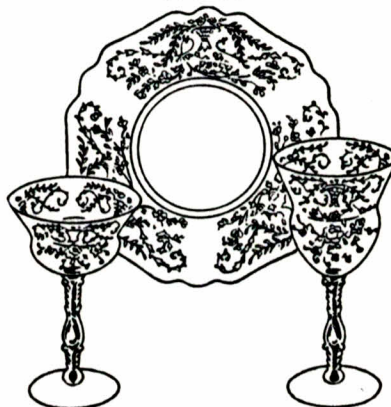
ETCHED CANDLELIGHT
3400/4/647—Console Set

No. 62



ETCHED DIANE
3122—Stemware

No. 63



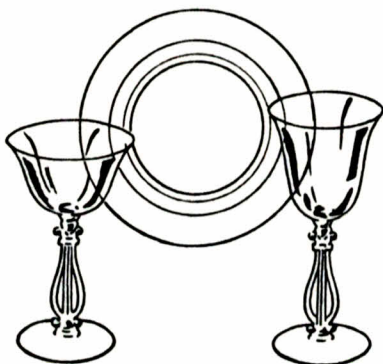
ETCHED PORTIA
3126—Stemware

No. 64



ETCHED ELAINE
3400/4/647—Console Set

No. 34



Regency Goblet
Regency Tall Sherbet
Regency 555—Salad Plate

No. 35



172



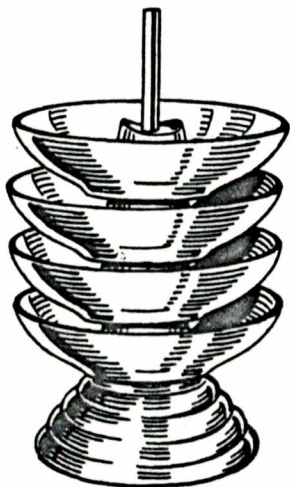
170



174

SYRUPS

No. 36



STACKAWAY

No. 37



Brilliant New Gifts in
CAMBRIDGE
Decorative Crystal

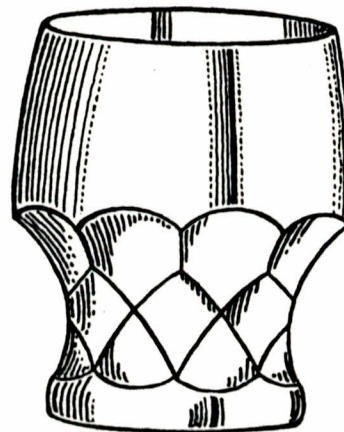
Exciting to give . . . thrilling to receive . . . are the many beautiful, practical gift items in Cambridge Decorative Crystal. Modern in motif, hand-made and fire-polished to high brilliancy, they create smart, individual effects for your favorite settings. Shown above are Eagle Book-ends, suitable for table or mantel; Crystal Bells, which add a cheerful note for festive occasions; and Crystal Cigarette Lighter and Tray, as thoroughly useful as they are decorative. Prices are well within your budget. Select your favorites today.

**DEALER'S
NAME**



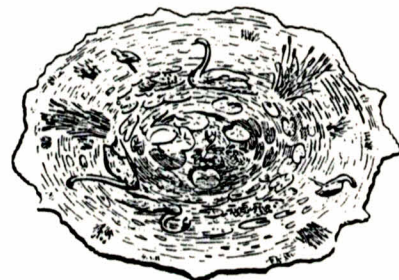
Cambridge
HAND MADE GLASS

No. 38



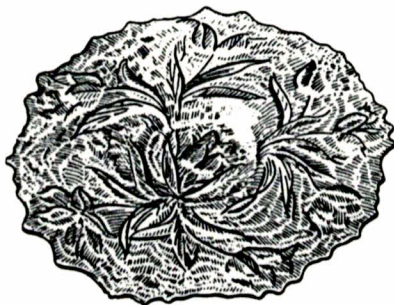
GEORGIAN TUMBLER

No. 40



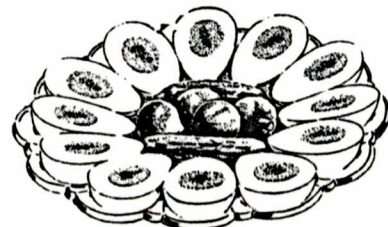
EVERGLADE
36--16 in. Plate

No. 39



EVERGLADE
31--16 in. Plate

No. 41



Deviled Egg Plate