



Cambridge Crystal Ball

Published by the National Cambridge Collectors, Inc. as a resource which informs, invites and inspires people to encourage the continued preservation of the glass produced by the Cambridge Glass Company of Cambridge, Ohio for future generations.

Issue No. 548

ISSN 2474-5987

May 2021

NCC: National and International Membership

Thank you for supporting National Cambridge Collectors, Inc.

Like other organizations, we have a challenge to recruit new members. As mentioned at the March membership meeting, our total is down slightly from last year. It has been extra difficult this past year without any glass shows being held and not opportunities to interact with people who might be enthusiastic about Cambridge glass.

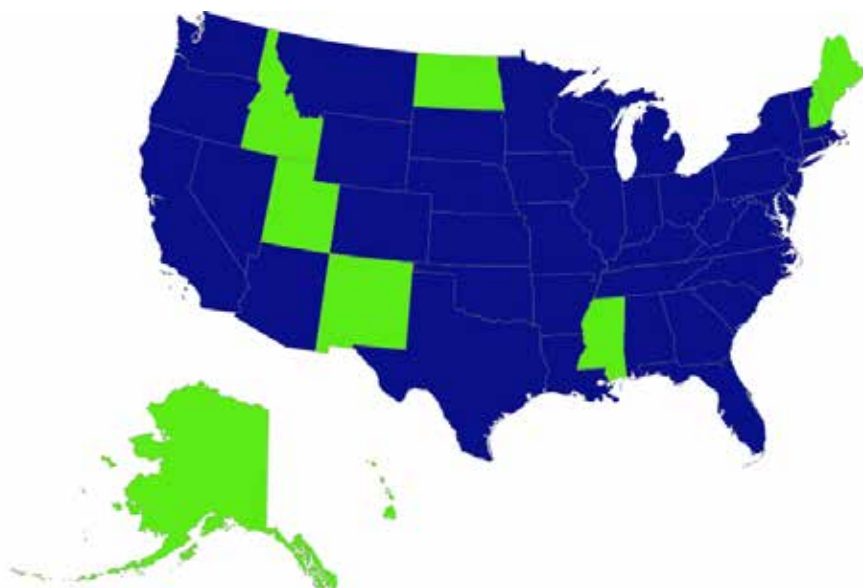
Most glass shows provide a table of information material, or even a table for a club to share their information. We can use your help to distribute information about NCC at shows or other activities that can promote the goals of NCC.

We are an international organization with members in Canada and Japan. With the history of The Cambridge Glass Company in other countries, we should try to build upon that connection. Any suggestions?

I could use your help with connecting with potential members in the few states not colored in on the map. Alaska, Hawaii, Idaho, Maine, Mississippi, North Dakota, New Hampshire, New Mexico, and Utah

Recruit a member!

Map showing the states with and without members



What's Inside

NCC: National and International Membership . . .	1
President's Message	3
National Museum of Cambridge Glass Celebrates 20 th Year.	4
Minutes of the March Membership Meeting . . .	6
Cambridge Curiosities	8
Zoom & Tell: Light Emerald & Pistachio.	12
Proposed By-Laws Changes	13
eBay Report Breakout: Imperial Nude Compute .	13
eBay Report	14
New Members.	16

National Cambridge Collectors, Inc.

PO Box 416 Cambridge, OH 43725-0416

Board of Directors

2021

Ken Filippini Freeman Moore Lyle Stemen

2022

Julie Buffenbarger David Rankin Frank Wollenhaupt

2023

Nancy Misel Lindy Thaxton Lynn Welker

2024

Cindy Arent Larry Everett Mike Strebler

Officers

President Freeman Moore
Vice-President Ken Filippini
Secretary Nancy Misel
Treasurer Lindy Thaxton
Sergeant-at-Arms Larry Everett

Director of Human Resources David Ray
Chair, Strategic Planning Comm. Mike Strebler
Chair, Endowment Committee Doug Ingraham

MEMBERSHIP QUESTIONS?

Please send address changes to:
Membership - NCC
PO Box 416
Cambridge, OH 43725-0416
or by e-mail to:
membership@cambridgeglass.org



CONTACT US

NCC Business Manager
Phone: 740 432-4245



businessmanager@cambridgeglass.org

Freeman Moore, President
e-mail: president@cambridgeglass.org
Nancy Misel, Secretary
e-mail: secretary@cambridgeglass.org

Member Services

Vice President

Member Relations
Convention
Member Social Media
Glass Dash
Glass Show
Study Groups
Webmaster

Freeman Moore (acting)
Freeman Moore, Membership Database
Larry & Susan Everett
David Ray
Larry Everett & Frank Wollenhaupt
David Ray, Mike Strebler, Jack Thompson
Jeannie Moore, Study Group Coordinator
David Adams

Development

Vice President

Campaigns

Events

Projects
Publicity

Julie Buffenbarger
Ken & Jane Filippini, Annual Fund Directors
Larry Everett, Director of the Heritage Society
Bev & Will Acord,
Lynn Welker, Auction Managers
Susan Everett & Frank Wollenhaupt, Jewelry
Convention: Jonathan Fuhrman

Education

Vice President

Crystal Ball
Publications
Media Productions
Research

Larry Everett
Freeman Moore, Editor
Larry Everett, Director of Publications
Dave Rankin, Director of Media Productions
Dave Rankin, Director

Museum

Vice President

Public Operations
Facilities & Grounds

Inventory Management
Collections
Museum Gift Shop

Archivist
Museum Social Media
Community Relations

Cindy Arent
Lindy Thaxton, Director of Public Operations
Cindy Arent,
Joe Miller,
Lindy Thaxton
Lindy Thaxton, Director of Inventory Management
Lynn Welker, Director of Collections
Cindy Arent, Gift Shop Manager
Lynn Welker, Gift Shop Manager
Mark Nye, Director of Archives
Cindy Arent, Director
Cindy Arent

Administration

Vice President

Accounting & Finance

Lindy Thaxton
Lisa Neilson, Office Manager

Heritage Society

Ensuring the preservation mission of the NCC through planned giving and estate bequests.

Members of The Heritage Society are those who have included the NCC in their wills or estate plans, thus providing the organization with a secure future.

The mission of The Heritage Society is to foster smart estate planning and to assure that NCC is not forgotten as an important beneficiary. Any pledge is meaningful and appreciated.

All Cambridge collectors - both current and future - will benefit from, and be grateful for your support.

Let us know how we can help with your future plans.

Museum:

National Museum of Cambridge Glass



Member: Cambridge Glass/National Cambridge Collectors

NCC Website: www.CambridgeGlass.org

Miami Valley Study Group Website: www.mvsg.org



PRESIDENT'S MESSAGE

Thanks to our Volunteers

April has arrived, and hopefully most of you are enjoying spring or least hints that it is coming. Cindy Arent tells me the museum opened on April 1st and has begun with a great start. This is opposite of what happened last year, when the museum stayed closed until June 10th. Let's hope everything continues to improve

April 18-24 was National Volunteer's Week and we need to give a hearty round of "*thanks*" to all the volunteers that support the efforts of NCC.

Think about the annual benefit auction. Volunteers solicit items, receive items, photograph items, create the catalog, and then during the auction itself, volunteers display the glass and deliver it to buyers. And of course, someone has to coordinate the packing and shipping for the mail-in bids.

Think about all the work that has to happen to make the Convention and Show happen. A lot of that work happens months before the event remotely. Some tasks need volunteers at the last minute, such as setting up tables, but really, a lot of the work is done early and does not require one to be physically present in Cambridge Ohio. Our website is a great example of being supported remotely by volunteers. And don't forget the many volunteers that help with museum activities!

Consider this issue of the Crystal Ball. Our members are across the country and international. You may not have had the opportunity to have visited Ohio and our events, but this newsletter gets to the households of all of our members. We need you to supply the content. If you have pictures to share, share them. If you have ideas for future articles, share them. Of course, if you have an article ready, let's get it printed.

We rely upon our volunteers do all the jobs that support the organization. Some members have been operating in the same role for a long time and could use help or a

replacement due to fact that everyone is getting older. Just because someone is already doing a task that you might do, let me know and we'll get you involved.

Annual Fund

You should have received your Annual Fund mailing by now. My thanks to Jane and Ken Filippini for getting this mailing sent out to every household. Our Annual Fund is when you renew your support for NCC as well as cast your votes for the Board of Directors. If you haven't done so yet, please review the materials and return as soon as possible. Ballots need to be received by June 19 to be counted.

Socializing

My thanks to Julie Buffenbarger and David Ray for coordinating the monthly Zoom-and-Tell sessions. These sessions will continue on a monthly schedule and provide that opportunity to socialize with fellow Cambridge glass collectors. The schedule is posted on the website as well as a link to get the meeting information. If you have the time, join a session and watch. It's easy and you get to see a variety of items, probably a lot that you haven't see before!

What's coming?

What's on your Cambridge "wish list" for this year and beyond, and how can we help?

Be safe. Be careful. Take the correct precautions.

Sincerely,

Freeman Moore
president@cambridgeglass.org

National Museum of Cambridge Glass Celebrates 20th Year!

By Cindy Arent

The National Museum of Cambridge Glass has opened for the 20th season at 136 S 9th Street in Cambridge, Ohio. The grand opening celebration was held during the 2002 convention with over 300 members attending from all over the country. NCC's first museum, just east of Cambridge, opened in 1982 and was in operation until the flood of 1998 filled the building with 5 ½ feet of water.



We have learned and grown enormously since 2002 and have enjoyed many accomplishments due to the hard work and dedication of NCC members.

The National Museum of Cambridge Glass opened for the 2021 season on April 1st and the first week of

operation has been the best ever! This is very surprising since we are just emerging from the pandemic. A few motorcoach companies have booked for this year and yesterday we had a June, 2022 booking from Warther Tours, a first from this very reputable company.

As you know, outreach is very important. A meeting was held at the Guernsey County History Museum to discuss plans to recognize the 100th Anniversary of Old Home Week. The celebration was held October 2 – 8, 1921 and The Cambridge Glass Company made etched paperweights as souvenirs for the weeklong event.



NCC Crystal Ball

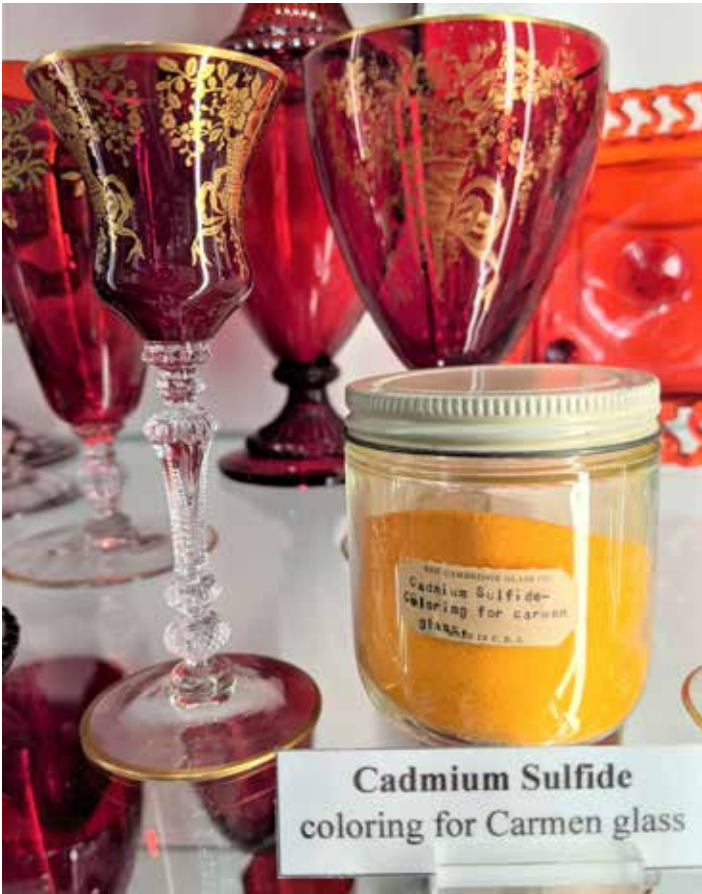
Attending the meeting were reps from the Guernsey County History Museum, Cambridge Main Street, Visitors & Convention Bureau and National Museum of Cambridge Glass. We will be meeting again in May to discuss our marketing plan and events. Also in May, Sharon Miller, Lindy Thaxton and I will be doing an Etiquette Program for the graduation ceremony of the Cambridge Area Chamber of Commerce Youth Leadership Group at the Cambridge Country Club. The program was cancelled last year due to Covid, so we are excited to be invited again this year and look forward to providing an interactive program.

This spring, it has sometimes been difficult to drive the streets of Cambridge due to construction projects, but that's progress. Speaking of progress, two new antique stores will be opening in downtown Cambridge this summer, Black Cat Vintage (located in the Penny Court building) and Alley Cat Antiques (located in the rear of the building at 7th Street/Wheeling Avenue).

Thank you to Bill and Suzanne Chamberlain for picking up a recent glass donation from Glendale AZ. Your help is appreciated.

We hope to see you at the museum. However, if you can't visit, you can still follow the news on the National Museum of Cambridge Glass Facebook page. Happy Spring and enjoy the beautiful weather! ■





Cadmium Sulfide
coloring for Carmen glass

During a museum tour, we are frequently asked, “What makes the different colors in the glass?” We explain that each color had a specific formula and mention a few of the chemicals that were used. This season a few original Cambridge Glass Company jars containing coloring agents have been added to the display to help explain the process. Cadmium Sulfide was one of the coloring agents used for the Cambridge color, Carmen.



On opening day members (L-R) Tom Davey, Julie Davey and Karen Treier discovered new pieces of Cambridge Glass on display.



What a nice surprise, I looked out the front door and in came members Mike and Sandi Van Gorder! (L-R) Lindy Thaxton, Sandi Van Gorder, Mike Van Gorder and Jack Thompson.



Many thanks to our members for your support. During opening week members Joey Pirl and his mother, Vera, stopped in for a visit. (L-R) Cindy Arent, Joey Pirl and Vera Pirl.

National Cambridge Collectors, Inc.

Minutes of the March 19, 2021 Quarterly Meeting

President Freeman Moore called the March 2021 Quarterly Meeting of the National Cambridge Collectors, Inc. to order on Friday, March 19, 2021 at 7:31PM with about 30 participants. The meeting was held virtually via Zoom.

Secretary's report:

The scheduled October 2020 Quarterly Meeting was cancelled due to the pandemic. The minutes of the June 26, 2020 Annual Meeting were published in the August 2020 Crystal Ball. No changes or corrections were requested by the membership. Scott Adams moved to approve the minutes as published. Frank Wollenhaupt seconded the motion. The minutes were approved by unanimous consent.

Treasurer's report:

Lindy Thaxton presented the Treasurer's report. Overall, NCC made it through 2020 in very good shape. Donors were very generous to the 2020 Annual Fund and also with special donations. Additionally, Cindy Arent was successful in obtaining \$17,485 from four grant programs. NCC saw very little expense, and very little income, from the cancelled 2020 Auction, Convention, Glass Show and Glass Dash.

The Museum experienced a shortened season, open only from mid June through December. Income and expenses were both down due to the impact of the pandemic and the shortened season. Museum improvements in the past year, funded partially through grants and special donations, included lighting, smoke detectors and security cameras.

The Endowment Fund increased by \$105,933 in 2020 due to an incredible stock market and the addition of \$76,725 transferred into the fund from operations. The Fund balance as of February 28, 2021 was \$759,321.

Reports:

Administration - Lindy Thaxton reported that a claim has been filed, and approved, for a piece of glass that was broken at the museum. NCC is awaiting the check. During a recent review, Guernsey County removed the tax exempt status on the storage building. This resulted in a tax bill for this year. Lindy has filed to have tax

exempt status reinstated and is currently waiting for a hearing date.

Development - Freeman Moore reported that the March Auction has been rescheduled for October 2021.

Education - Larry Everett provided an update on the archives digitization project he and Dave Rankin have undertaken. Since mid December 2020, 42,258 documents have been scanned and processed. This is just over 58% of the 2,477 files in the archives. The process has identified many new engravings, decorates and etchings. Much of this information is now available on the MVSG.org homepage. Also recently added to the site, and produced by Jack Thompson, are charts detailing the Turkeys and Statuesque Line. A chart of Cambridge Colors with dates of introduction has also been placed on the website.

NCC has become more digitally focused in the past year. Zoom and Tell meetings organized by Julie Buffenbarger and David Ray are very successful. The Miami Valley Study Group meetings are also video conferences with anyone invited to participate. NCC currently has three websites (cambridgeglass.org, cambridgeglassmuseum.org and mvsg.org) and two Facebook pages. A digital strategy group has been established to coordinate and further the NCC digital presence. Larry encouraged members with ideas, or interest in the project, to contact him.

Larry thanked the people who, over 50 years ago and before NCC existed, began gathering Cambridge Glass information by traveling to libraries around the country to scour trade journals, photograph, and secure the information for us. All of this was accomplished before digital cameras and interstate highways and when libraries were searched using the Dewey Decimal system. Those pioneers were Dave and Sue Rankin, Frank and Vicki Wollenhaupt, Jack and Sue Rettig, and Joy and Dave McFadden. Additionally, many of the documents in the archives are from the library of Bill and Phyllis Smith.

Member Services - Freeman Moore reported that the Board has cancelled the 2021 Convention, Glass Show and Glass Dash. Decisions on a potential virtual event

in June have yet to be made. He encouraged member participation in the Zoom and Tell sessions.

Membership is down slightly from a year ago. As of March 1, 2021 NCC has 683 members/449 households vs. 702 members/460 households on March 1, 2020. Freeman noted that it is somewhat difficult to recruit new members when there are no shows and little opportunity for in-person interaction with potential new members.

Museum - Cindy Arent reported that the entire Museum has been cleaned and shined during the winter. New showcase lighting has the museum displays looking better than ever. The Museum will open on April 1st and there are a few bus tours already scheduled.

The Museum recently received a significant glass donation from the Western Illinois Museum in Macomb, IL. Acting as couriers for the delivery were NCC members Tim and Nancy Crose. Cindy stated she hopes to have these examples of the glass decorating process on display by Museum opening.

The Cambridge/Guernsey County Visitors and Convention Bureau has recently approved a \$1000 grant to NCC which will be used for marketing. Information submitted by the VCB also yielded a nearly full page photo of the Museum in a recent issue of Group Tour Magazine. Cindy also reported that a new antique store is set to open in May in Cambridge. It will have limited booth space available. Contact her for additional information.

Old Business: None

New Business:

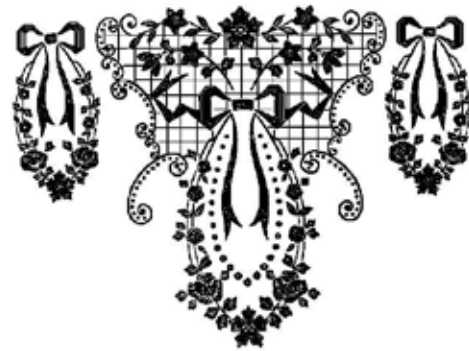
Nominating Committee - The 2021 Nominating Committee was comprised of David Ray, Jim and Nancy Finley, and Elaine Thompson. David Ray announced that the three current Directors whose terms expire this year are Ken Filippini, Freeman Moore and Lyle Stemen. Each has chosen to run for re-election. The Board had previously accepted the slate but, prior to presenting it to the membership for approval, Freeman Moore opened the floor for nominations. Hearing no nominations, David Ray made the motion to close nominations. The motion was seconded by Scott Adams and passed by consensus. David Ray then made the motion to accept the 2021 slate. Seconded by Tarzan Deel, the motion passed by

consensus. The candidate bios will appear in the Crystal Ball and ballots will be mailed with the Annual Fund.

Upon hearing no further new business, Frank Wollenhaupt moved to adjourn. This was seconded by Kathy Adams, approved by those present, and the meeting adjourned at 8:10PM.

Respectfully submitted,

Nancy E Misel
Secretary



Remember NCC 1975?

The mvsg.org website has an addition that members should be interested in.

Mvsg.org -> videos -> program videos ->
May 3, 1975 – “Thoughts from Gene Henn.” Salesman for Cambridge 1924-1953,
Introductions by Bob Coyle & Lucile Kennedy.

This presentation is from 1975, the 2nd NCC convention and was held at the Holiday Inn so you'll hear some background noise. Gene was the banquet speaker. Gene Henn was the manager for the New York showroom and sales office.

It's 2.5 hours long so you will probably want to break this up into more than one viewing session.

I would be interested in your feedback.

Larry Everett



Cambridge Curiosities

By Jack Thompson Chapter 8



Welcome to some of my whimsical observations of the wonderful world of Cambridge glass. Over time, we have come to realize there are so many interesting, strange and/or quirky things about this company and the beautiful products they made. Some may never be explained, but all are just plain fun to think about and explore. These are not meant to be things exhaustively researched; I'll leave that up to you readers or maybe Frank's column of *Only Questions – No Answers*. Let's just have some fun!

Let's talk about molds.

This brings to mind some fond memories of the "Moldy Brothers". Larry Everett, Frank Wollenhaupt and Ron Hufford did two great convention programs on molds, etc. back in 2008 & 2009. Both were held at the NCC storage building and were well attended. They were so informative and entertaining. It would have been nice to have a recording of those programs on mvsg so we could see them again. A former member did record one, but it has never been made available. These pictures I pulled from the archives will have to suffice.



Molds were definitely expensive to design and make.

So it makes sense that Cambridge would produce many different pieces from the same mold if they could. There are plenty of examples in the Cambridge lines. I've found the largest number of different pieces using one specific mold occurs in the Caprice, #3400 and #3500 lines. That is understandable, since these were three of Cambridge's largest lines. When the glass came out of the mold and while still soft, the worker would tool it in different ways resulting in all the variations. We have often joked that there were days a worker had a twitch, and crimped the piece an ever-so-slightly different way. They just gave it a different name and number, and marketing did the rest.

Example 1: At least 10 known bowls were made using the same piece coming from the mold as pictured in the photo at right. This sample is on display at the Museum.



Try to imagine the worker taking this blank and working it to become each of these 10 bowls. Have you ever examined the difference between the #3400/44 and the #3400/136? Very difficult to discern which is which.



#3400/4, 12"
4-Toed Bowl,
Carmen,
Japonica Decor



#3400/5, 12"
4-Toed Bowl,
Etched Portia,
Gold Encrusted



#3400/44, 6" 4-Ftd.
Bowl or Vase,
Carmen

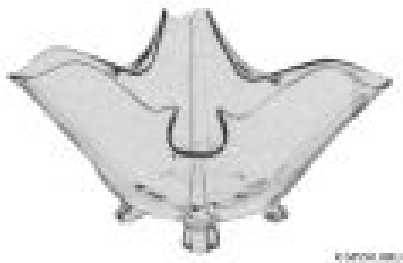
Looking at the various 3400 bowl shapes ...



#3400/45, 11"
4-Toed Bowl,
Ebony, Etched
Rose Point, Gold
Encrusted



#3400/135, 9"
Bowl, Royal Blue



#3400/46, 12" 4-Ftd.
Crimped Square
Bowl



#3400/136, 6"
Bowl or Vase,
Etched Elaine



#3400/47, 13"
4-footed Crimped
Narrow Bowl,
Etched Wildflower



#3400/160, 12"
4-Ftd Bowl,
Amber, Etched
Apple Blossom



#3400/48, 12"
Crimped Bowl,
Emerald, Charleton
Pin Stripe & Roses
Decor



Spittoon, Crown
Tuscan

Bonus extra: The Crown Tuscan example came from this mold also, but it is so far unidentified. Looks like a spittoon. Was it a worker's whimsy or special order? Very cool!

Example 2: There are at least five additional pieces that use the same mold as the #3400/13 – 6” 4-Toed Comport. Each one has a different number and description. Notice they called the other five bonbons.



#3400/13, 6” Comport, Etched Portia, Gold Encrusted



#3400/201, 7” Shallow Crimped Bonbon, Etched Elaine



#3400/202, 6½” Oblong Crimped Bonbon, Etched Rose Point, Gold Encrusted



#3400/203, 6” Deep Crimped Bonbon, Etched Chantilly



#3400/205, 6” Shallow Cupped Bonbon, Etched Elaine



#3400/204, 3½” Deep Cupped Bonbon, Etched Rose Point

Example 3: Lids for certain items also were often used in different ways. A fun one is taking the lid from the #3400/7 – 7” Candy Box and creating the hard-to-find #3400/129 – 6” Lemon Tray. Bonus points if you noticed it is not the same lid that goes on the #3400/52 – 5 ½” Covered Butter. You’d think it would be.



#3400/9, 7” Candy Box & Cover, Etched Elaine



#3400/129, 6” Lemon Tray, Etched Elaine

Example 4: One of my favorite examples of the “worker’s twitch” is the #3500/28 – 10” Footed Bowl and the #3500/115 – 9” Footed Bowl, which both came from the same mold. #3500/28 is slightly flared and is more commonly seen. The #3500/115 is slightly cupped and is rarely seen today. They are hard to distinguish unless they are side by side or you have a tape measure and a discerning eye.



#1402/133, 5½” Twin Salad Dressing Set, Etched Elaine, Gold Edge



#1491 - 5½” Twin Salad Dressing Set, Etched Elaine



#3500/115, 9” 2-Hdl. Ftd. Bowl, Etched Elaine



#3500/28, 10½” Ftd. Bowl, Satin Rim & Base, Etched Elaine



#1402/52, Ice Pail, Etched Elaine



#1705 - Ice Pail, Etched Elaine

Some Final Notes:

Many times instead of discarding a mold, Cambridge would modify or repurpose it to make an entirely new piece. Some involve taking Tally Ho items and removing the lines. For example, the #1402/52 Ice Pail became the #1705. The #1402/133 Twin Salad Dressing Set became the #1491. These are just a few of hundreds of examples, many of which can be confirmed in the mold record books.

We know that the Tally Ho molds that were not repurposed, were junked as part of the World War II scrap campaign of the early 1940s. When working on my recent Tally Ho candlestick article for the June 2020 Crystal Ball, I was perusing the junk mold record books to see when that might have taken place. As I’m reading through these, it struck me that during that campaign, Cambridge junked hundreds and hundreds (lots!) of molds. They also had a tremendous amount (lots!) of molds stored, many marked as stored in the basement. Molds, even for the smallest piece weren’t small, so the entire mold inventory had to take up an incredible amount of space. Think about that.

- When I was selecting pictures for the #3400 bowls, the decision became difficult for a couple of them. The #3400/4 is one of the most popular bowls Cambridge ever produced. There were so many fantastic examples I had to leave out: Royal Blue Gold Encrusted Rose Point and Gloria; RCE Candlelight and Lucia; Amber, Carmen & Forest Green, all Gold Encrusted Diane; and more. I really wanted a Japonica example though. Which would you have chosen?
- Notice the only thing I could not find an actual image for is the #3400/46 bowl, and I had to rely on the catalog. I have never seen an example of this bowl, although I was told by a fellow NCC member that a crystal undecorated one is known to exist and was donated to the museum gift shop many years ago.
- The 5 Bonbons similar to the #3400/13 Comport are mostly a mystery. They appear only on a June, 1941 catalog supplement “Miscellaneous” page, but are not on any known price list. They were not made for very long. ■

Zoom & Tell: Light Emerald & Pistachio

by David Ray

Where were you on Thursday, March 18 at 8:00 pm EST? Nearly 50 collectors of Cambridge glass joined the March Zoom & Tell to learn about and share their favorite pieces of Emerald and Pistachio glassware. The Cambridge Glass Company produced green colored glassware with the name of Emerald during three different time periods. To distinguish the Emerald color produced from 1923 until the early 1940's, collectors coined the term "Light Emerald" which describes this vibrant medium shade of green. During the 1920's when pastel colors were popular, Cambridge produced a wide variety of items in Emerald. The most popular items found in Light Emerald are swans, flower frogs, Decagon, Round, Weatherford and numerous candlesticks and vase. Emerald was frequently decorated with etchings popular during the 1920-1930's. The two main chemical ingredients used to produce the Emerald color was uranium oxide and copper oxide. Uranium oxide causes Emerald colored glass to fluoresce under a black light. Some of the items shared during the Zoom & Tell were a pair of Stratford Dolphin Candlesticks, a handled tumbler with GE Dragon etching, a spiral optic vase with GE Dragon etching, a Sani-Shaving Service, a Melon Boy flower frog and a Turkey.

From 1938-1943 and 1955-1958, Cambridge produced light green colored glass called Pistachio. During the earlier production years, Pistachio was mainly used for the Caprice line and Varitone sets. Early Pistachio had nearly an identical chemical formula to Emerald with the main color ingredients slightly reduced and Borax was replaced by Babosil (short for Barium/Boron/Silica). Pistachio is a much softer and less vibrant green color when compared to Emerald. During the re-open period of the late 1950's, Cambridge reintroduced the Pistachio color. The later Pistachio is a duller green color due to the elimination of uranium oxide from the formula. These pieces often form a greasy film on the surface of the glass only a few weeks after being cleaned. The late Pistachio is most commonly found in select nude stems and the 1528 vase. Pistachio items shared during the Zoom & Tell include a Caprice claret, a nude goblet with crackle bowl, a tall nude cocktail with crackle bowl and a short nude cupped comport.

The next Zoom & Tell is scheduled for Thursday, May 20 at 8:00 pm EST. I encourage you to join the Zoom event early so you can engage with fellow Cambridge glass enthusiasts. The theme for May is Yellow: Gold Krystol and Mandarin Gold. If you are interested in participating in an upcoming Zoom & Tell program and you have not participated in the past, please send an email to membership@cambridgeglass.org and you will be included in the next invitation for the May Zoom event. Anyone having an internet connection and an email address can join the monthly Zoom event. If you have any questions, please contact David at westervillesh@hotmail.com. A practice session can be created to make certain your computer is properly set up prior to the next event.



Proposed By-Laws Changes:

The Board of Directors recommends the membership approve the following updates to the By-Laws at the next membership meeting.. This change will save NCC the expense and effort of mailing ballots if an election is uncontested.

notation: ~~deleted text~~ *inserted text*

Section 1:

- (a) The Directors of the organization shall be elected ~~by mail~~, prior to the annual meeting each year.
- (b) Each year, the President shall appoint a Nominating Committee of at least three members. The Chairman shall be the immediate Past President, if then an active member of the organization. Should the immediate Past President be unable to chair this committee, the ~~Board of Directors~~ *President* shall appoint a Chairperson, selected from the members of the committee.
- (c) At the regular meeting prior to the annual meeting, the Nominating Committee shall present a report, giving the number of Directors to be elected and presenting one or more nominations for each vacancy, at which time additional nominations will be entertained from the floor.
- (d) The consent of any nominee must be obtained prior to his/her nomination.

Section 2:

- (a) At least 45 days prior to the annual meeting, a ballot containing all nominees for Board vacancies will be mailed to the entire voting membership. This ballot must be returned to the National Cambridge Collectors, Inc. no later than seven days prior to the annual meeting. *If the election is uncontested, ballots need not be mailed out and the nominees will be declared elected.*
- (b) The results of this ballot shall be announced at a membership function prior to the annual meeting.
- (c) The nominees receiving the largest number of votes so cast shall be declared elected for the term of office beginning at the close of business of the annual meeting.

An eBay Report Breakout: Imperial Nude Comporte

by Michael Krumme

(with a little help from one of our avid members)

Sometimes an item mentioned in the monthly eBay Report deserves a little extra attention. Discussion about this comports is a timely followup to the Statusque Color Chart that appeared in the February 2021 Crystal Ball.

A seller offered an 8-1/4 inch comports with cupped Moonlight Blue bowl and a satinized crystal stem, which sold for the opening bid of \$100. A devoted NCC member advises me that Cambridge never produced this comports that way. Here are the comments that were shared with me:



"This nude was actually produced by Imperial in 1962. Imperial reissued the tall-sized nude comports in only two colors -- Verde Green and Moonlight Blue. The Moonlight Blue color of the bowl of this nude is indistinguishable from Cambridge's Moonlight. These imperial nudes had satin stems and that treatment was called "doeskin" by Imperial. Doeskin by Imperial tends to be more faint than satin finishes by Cambridge. I haven't seen or heard of one in Verde Green, but I assume they are out there, based on Imperial reference materials. Cambridge did make a Moonlight Blue nude comports -- but only with the medium-sized nude rather than the tall-sized nude -- during the reopened period in the 1950s."

Thank you for sharing this information, which was news to me! ■

Welcome to the eBay Report, featuring Cambridge glass items that sold on eBay circa mid-March to mid-April 2021. Selling prices are rounded to the nearest dollar. If no color is mentioned, assume that the piece or part of it being discussed is crystal. If I refer to an auction as "incognito," that means that the seller did not know he or she was offering Cambridge glass, and didn't list the item in one of the Cambridge glass categories. I am also trying to make sure I mention if a listing was a Buy It Now offering, as opposed to an auction style listing. I think it's important to distinguish between the two, as the price for an auctioned item reflects competitive bidding (or no competition, if it sells for the opening bid.) Here we go:

Rose Point

A pressed stem Rose Point cordial with Forest Green bowl sold for \$99.



A set of 5 pressed stem Rose Point ice tea tumblers stirred and sipped away for \$105.



A set of 3 #3106 water goblets were offered at \$195, but sold for an undisclosed Best Offer. This stem is not often seen with Rose Point.

A #3500/67 12 inch 6 piece relish set dished it out for \$200.

A #P-533 mayonnaise set consisting of the comport and underplate with the wide Wallace sterling silver edge mounts, which feature a pierced rendition of the Rose Point motif, sold for \$261.



A Tally Ho 17 1/2 inch Sunday Night Supper plate with Farber Bros. chrome tray to hold it sold for \$275 Buy It Now. Some utensil wear was noted.

A #1670 syrup with Drip cut top was offered at \$500 and sold for an undisclosed Best Offer.



Statuesque (Nude Stem) and Related Items

A set of 5 cocktails with bowls one-each in Pistachio, Mocha, Tahoe Blue, late Pink, and Gold Krystal were quaffed for \$136 in an incognito listing.



A Seashell top 7-1/2 inch comport in solid Gold Krystal sold for \$180 Buy It Now.



A 7-1/4 inch covered cigarette box with Carmen top sold for \$490 wafted away on a Buy It Now.



A cocktail in the rare Crown Tuscan stem/Royal Blue bowl combination sold for \$687 after 28 bids.

Gold, Silver, Platinum and Enamel Decorations

A #3400/108 (64 oz?) ball shaped handled cocktail shaker with chrome lid, etched and gold encrusted Diane, sold for \$449 after 20 bids. A small chip on the inner rim (which would be covered by the metal lid) was noted.



An Ebony #82 10-1/2 inch blown vase with silver encrusted Dancing Girls etching (one rendition – the lady with the scarves and butterfly) pranced away for \$219. I applaud the person who won it for shopping early for my birthday. December will be here before you know it!



Etched Tableware and Stemware



A pair of #1307 triple candelabra in Gold Krystal with Rose Marie etching sold for \$70 in an incognito listing. WHEN do you see these candlesticks in that color? Interestingly, the same stix in PeachBlo, with the same etching, sold for the same price in January.

I don't know how I missed the set of 4 #3035 low sherbets with Heatherbloom bowls etched Rosalie that sold for \$103 back in February, but they were nice.



A #38 Everglades 11 inch vase in crystal satin sold for \$100. The same item in shiny crystal brought \$79 Buy It Now.

A green Near Cut carnival glass cologne bottle with no stopper was offered at \$195 and sold for \$156 on a discount offer.



A #876 covered ice tub in Peach Blo, etched #742, minus the chrome-plated handle, sold for \$114. The seller listed it in the Paden City glass category, no doubt due to its resemblance to the Paden City "macaroon jar." (It's often referred to as a macaroon jar, due

to the fact that that's what Fenton called a similar piece they made.) It may take a while for the lucky winner to find the right-fitting chrome handle for this, but hey -- you've got to have goals, diligence, and determination in collecting. And the satisfaction one gets when one FINDS that missing part? Priceless!

A #3575 Regency comport etched Diane sold for \$129. When was the last time you saw a piece of Regency with a major etching on it?



A #3400 tilt-style ball decanter and stopper with white and light blue enamel highlighting and trim sold for \$179, after 18 bids. It never occurred to the seller to give us any measurements. Some nicks to the shank of the stopper were noted as well as roughness on the spout.



A pair of early-style Doric column candleholders in Ebony were offered at \$250 and sold for an undisclosed Best Offer. Another pair in the early-style, also in Ebony but with an interesting enamel highlighted decoration, were offered at \$200 and sold for an undisclosed Best Offer.



A tall samovar in Topaz (vaseline) yellow etched Martha, set in unusual copper-toned metal, sold for \$425 on a Buy It Now. The seller stated that the piece appeared to be unused.

A swan punch bowl and 12 matching cups sold for a reasonable \$295 on a Buy It Now.



A wide-style samovar in Topaz ("vaseline") etched #739, in wonderful condition, sold for \$434. I'm beginning to wonder just how many of these etched Topaz samovars are out there. Lovely as they are, if any more turn up, I'm going to stop reporting on them!

A small Buddha figurine in Topaz mounted as a lamp sold for the opening bid of \$450.



A pair of Pristine #496 5 inch interchangeable candlesticks (aka the "steps" candleholders) were offered at \$500 and sold for an undisclosed Best Offer. Sadly, the MMA (Metropolitan Museum of Art) reproductions, which are pressed in lead crystal and have an MMA acid stamp on the bottom, are far more common than the Cambridge ones made of a more humble glass formula.

Miscellaneous

A #76 Community smelling salts jar in Ebony sold for \$25 in an incognito listing. This appears to me to be the 4 ounce size, but it was also made in a 2 ounce and an 8 ounce.



A #1352 Frog vase in Forest Green with crystal handle (smooth-skin version) sold for \$587 after 16 bids.



A #579 blown 4 inch covered puff box in Topaz ("vaseline" yellow) etched #704 sold for the opening bid of \$29 in an incognito listing.

A pair of Amber dolphin candlesticks with Mt. Vernon pattern bases sold for \$74 in an incognito auction. Some gold trim loss was noted.

That's it for now. If you see any interesting Cambridge glass on eBay that you think I should be watching or reporting on, or if you have any other input, feel free to contact me at LAGlass@pacbell.net. I am well aware that I don't catch every interesting listing, especially those in a category other than Cambridge. Until next time, happy Cambridge hunting!

NCC Events

Benefit Auction - rescheduled
Saturday October 9, 2021

Member Benefit

Each NCC household is allowed one free 20-word classified ad in the Crystal Ball per calendar year as part of their membership. This can be a "For Sale" or "Wanted" type of classified ad. Submit your ad by email to editor@cambridgeglass.org

CLASSIFIEDS

Selling entire collection of Cambridge glass and Krome Kraft with Cambridge inserts. Entire collection +/- 300 pieces. Will sell separately. Salt & Peppers, Cream & Sugars, Compotes, Lazy Susan, Pitchers, Decanters, trays, misc serving pieces, most colors. Few etched pieces. Please contact with specific inquiry. Photos available. Illinois. Email Sue at: sd.camp@frontier.com

NCC welcomes the
following new members

Lynn Hagen

FL

May 7-8, 2021

Eastern National Antiques Show
66th Annual Spring Show
Carlisle Expo Center
100 K St.
Carlisle, PA
410-538-5558

Glass Shows

June 11-13, 2021

Fostoria Glass Society of America
Annual Convention and Elegant Glass Show
Moundsville Center Building
901 Eighth Street
Moundsville, WV. 26041
<http://fostoriaglass.org/>

Blooper



This was seen in a shop recently, listed as Heisey "Orchid" relish. But we know better, it is a # 862 8" 4-compartment relish, etched Portia.

For Sale - NCC Publications

Published by NCC • Members receive a 10% discount

TITLE		REGULAR PRICE	MEMBER PRICE
1903 Cambridge Glass Catalog reprint	106 page reprint, paperback.	\$5.56	\$5.00
1910 NearCut Catalog Reprint	108 pages, paperback, no price guide	\$14.95	\$13.45
1927-29 Catalog Reprint	66 pages, paperback, no price guide, includes identification guide	\$9.95	\$8.95
1930-34 Catalog Reprint	250 pages, paperback with 2000 price guide	\$14.95	\$13.45
1930-34 Catalog Index	Index for above	\$2.00	\$1.80
1940s Cambridge Glass Catalog reprint	613 page reprint, 3 hole punched	\$19.95	\$17.95
1949-53 Catalog Reprint	300 pages, paperback, no price guide	\$19.95	\$17.95
Cambridge Rose Point – A Collector’s Guide 2018	color, spiral bound	\$29.95	\$27.00
Cambridge Rose Point – 2nd Edition 2007	146 pages, paperback, no price guide	\$19.95	\$17.95
Caprice	200 pages, paperback, no price guide	\$19.95	\$17.95
Decorates	136 pages, paperback, no price guide	\$14.95	\$13.45
Etchings 2nd Edition 2006	102 pages, paperback, no price guide	\$17.95	\$16.15
Etchings: Blossomtime	26 pages, paperback, no price guide	\$7.95	\$7.15
Etchings: Candlelight	30 pages, paperback, no price guide	\$7.95	\$7.15
Etchings: Chantilly	44 pages, paperback, no price guide	\$7.95	\$7.15
Etchings: Diane	53 pages, paperback, no price guide	\$7.95	\$7.15
Etchings: Elaine	64 pages, paperback, no price guide	\$7.95	\$7.15
Etchings: Portia	57 pages, paperback, no price guide	\$7.95	\$7.15
Etchings: Wildflower	42 pages, paperback, no price guide	\$7.95	\$7.15
Rock Crystal Engravings	119 pages, paperback, no price guide	\$17.95	\$16.15
Rock Crystal Engravings (Listings)	Companion to above; lists all pieces in all patterns	\$9.95	\$8.95
Other:			
Cambridge Ohio Glass in Color	by Mary, Lyle and Lynn Welker 30 pages, color	\$6.61	\$5.95
Reflections	by Degenhart Paperweight & Glass Museum 45 pp	\$5.56	\$5.00

How to Order by Mail or from the NCC Website

Send orders to:
NCC • PO Box 416 • Cambridge, OH 43725

OHIO RESIDENTS PLEASE ADD 7.25% SALES TAX

SHIPPING:
\$8.00 FOR THE FIRST PUBLICATION
\$2.00 FOR EACH ADDITIONAL ITEM

Please include your name, complete mailing address and your phone number or e-mail address.

Payments by check or Money Order only, payable to NCC

Books may also be purchased on the NCC website,
www.cambridgeglass.org.

available on
amazonkindle

The following books can be purchased on Amazon and downloaded to your Kindle device



Cambridge Glass Colors



Cambridge Rose Point

Recruit
and
Retain

Give this page to a friend



The National Cambridge Collectors
P.O. Box 416 ~ Cambridge, Ohio 43725

“FRIENDS OF CAMBRIDGE” MEMBERSHIP

The National Cambridge Collectors, Inc. (NCC) is a non-profit organization dedicated to the education and preservation of the great work of the Cambridge Glass Company. Founded in 1973, we depend on the financial support of our members, who we call **Friends of Cambridge**, for the majority of our operating budget. Won't you consider becoming a Friend of Cambridge? You can also complete this online at: <http://cambridgeglass.org/online/>

Friend #1 _____

Friend #2 _____

Friend #3 _____

(continue on reverse if needed - indicate any children and their year of birth, only those 18 and older residing in your household may vote)

Address _____

City/State/Zip _____

Email Address (required) _____

Phone Number _____

Crystal Ball newsletter delivery: ___ email (color) ___ paper (black & white)

Glass collecting interest: _____

New Member? (Y/N) ___ or Renewal? ___ If renewal, Member #s ___

Levels of Membership

Patron \$ 35

Century Level	\$ 100	Mardi Gras Level	\$ 200
Japonica Level	\$ 500	President's Circle	\$ 1,000

All members receive the Crystal Ball, free Museum admission and 10% off any book/DVD purchases, President's Circle includes Convention registration for two members in the household and one free copy of any new NCC publication.

All memberships are renewed annually via The Annual Fund mailing in late March/early April. All Annual Fund gift recognition levels are per household and include membership for everyone within the household 18 and older. Each household will receive a subscription to the Crystal Ball newsletter, unlimited admissions to the museum, and rights to vote in elections for the Board of Directors and discounts on NCC books. NCC is a 501(c)(3) organization and Annual Fund gifts are allowed as a tax deduction under Section 170 of the Internal Revenue Code. Contact your tax advisor for your individual situation.

Return this form with check or money order payable to NCC, Inc. at the above address.
And always visit us at www.cambridgeglass.org to see what's new!

DEALER DIRECTORY

Dealer Directory - \$24 for 12-months, size limited by box (see below). Includes listing on NCC website. Electronic submissions should be emailed to: editor@cambridgeglass.org

Advertising Rates:

1/8 page \$15 1/4 page \$20
1/2 page \$30 Full page \$50

Mailed submissions and all payments should go to PO Box 416, Cambridge, OH 43725. Deadline is 10th of preceding month. Ads must be paid in advance. Show listings are FREE; send info to PO Box or e-mail address 60 days before event.

<p style="text-align: center;">Max Miller Elegant American Glassware www.maxmillerantiques.com</p> <p>The Market Place 10910 Katy Freeway. 713-410-4780 Houston TX 77043 mmxglass@aol.com</p>	<p style="text-align: center;">ISAACS ANTIQUES (740) 826-0696</p> <p style="text-align: center;">↔ <i>located in</i> ↔ DealBusters Marketplace 61 S. 2nd Street Byesville, OH (740) 605-1010</p>
<p style="text-align: center;">Glen & Carolyn Robinson White Rose Antiques Specializing in Depression Era Glassware</p> <p style="text-align: center;">2454 McFarland Road York, SC 29745</p> <p>803-684-5685 gandcrobinson@aol.com whiteroseglassware.com</p>	<p style="text-align: center;">MARGARET LANE ANTIQUES</p> <p>2 E. Main St. New Concord, OH 43762 Lynn Welker (740) 705-1099</p> <p>Cambridge Glass Matching Service Hours: Mon-Fri 10-12 AM, 1-5 PM or by appointment</p>
<p style="text-align: center;">CRYSTALLINE COLORS <i>Cambridge • Fostoria • Elegant Glass</i> Penny Court Mall, Cambridge - 2 booths Medina Antique Mall Medina, OH (I-71, exit 218)</p> <p style="text-align: center;">Lynne R. Franks 216-661-7382</p>	<div style="border: 1px solid black; padding: 5px;"> <p style="text-align: center; background-color: #4b0082; color: white; margin: 0;">Connecting Buyers & Sellers!</p> <p style="margin: 0;">Tell us what you are looking for and we help find it.</p> <p style="text-align: center; background-color: #4b0082; color: white; margin: 0;">CAMBRIDGE GLASS.US</p> <p style="margin: 0;">P. Snyder 740-601-6018</p> <p style="text-align: center; background-color: #4b0082; color: white; margin: 0;">E-Mail and Find Your Glass!</p> <p style="margin: 0;">psnyder@cambridgeglass.us</p> <p style="margin: 0;">www.cambridgeglass.us</p> <p style="font-size: small; margin: 0;">When you are searching for Cambridge glass, email your request and it is emailed to all members and dealers. P. Snyder, 1500 Edgewood Dr., Circleville, Ohio 43113</p> </div>
<p style="text-align: center;">CRYSTAL LADY 1817 Vinton St. Omaha, NE 68108 Bill, Joann and Marcie Hagerty 402-699-0422</p> <p>Specializing in Elegant Glass & Collectibles www.crystalladyantiques.com</p>	<div style="border: 2px solid red; padding: 10px; text-align: center;"> <p style="font-size: large; margin: 0;">Our House Antiques</p> <p style="font-size: small; margin: 0;">Linda and David Adams Las Vegas, Nevada 702-302-8282</p> <p style="font-size: x-small; margin: 0;"><i>Shows and Mail Order only</i></p> <p style="font-size: x-small; margin: 0;">email: David@OurHouseAntiques.com</p> <p style="font-size: x-small; margin: 0;">www.OurHouseAntiques.com</p> </div>

National Cambridge Collectors, Inc.
PO Box 416
Cambridge OH 43725
email: editor@cambridgeglass.org
website: www.cambridgeglass.org



Friends of Cambridge – Annual Fund

NCC exists through member giving using an Annual Fund system to raise operating funds and to ensure the preservation of Cambridge glass for future enthusiasts. The Annual Fund uses a common member "renewal" date and NCC sends out Annual Fund materials to everyone once a year. There are no monthly reminders or monthly renewal dates. The Annual Fund is NCC's primary means of support and all Annual Fund gift recognition levels are per household and include membership for all adults within the household. Additionally, each household will receive a subscription to the Crystal Ball newsletter, unlimited admissions to the museum, and rights to vote in elections for the Board of Directors. Multiple households at the same address are welcomed. NCC is a 501(c)(3) organization and Annual Fund gifts are allowed as a tax deduction under Section 170 of the Internal Revenue Code.

Levels of Membership

Patron	\$35
Benefactor - Century	\$100
Benefactor - Mardi Gras	\$200
Benefactor - Japonica	\$500
President's Circle	\$1,000

President's Circle includes Convention registration for two members in the household and one copy of any new NCC publications.

The National Museum of Cambridge Glass

Located at 136 S. 9th Street
in downtown Cambridge
Wed-Sat 9-4
Sunday 12-4

