



Cambridge Crystal Ball

Published by the National Cambridge Collectors, Inc. as a resource which informs, invites and inspires people to encourage the continued preservation of the glass produced by the Cambridge Glass Company of Cambridge, Ohio for future generations.

Issue No. 500

August 2016

Cambridge Rose Point – a new book is available

National Cambridge Collectors, Inc. announces the publication of “Cambridge Rose Point – A Collector’s Guide” by Gary Turner and The National Cambridge Collectors, Inc. Copies of this book were received in time for the 2016 convention so members could purchase a copy while in Cambridge.

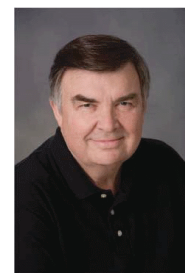
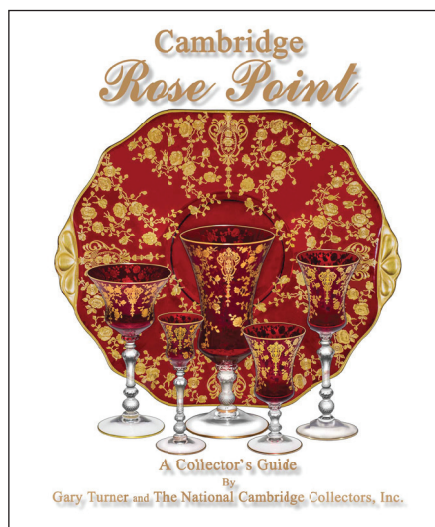
This spiral bound book has over 160 pages of illustrations with twelve pages in full color. All illustrations in the book are extremely detailed photographs of actual items, photographed by Gary Turner. It includes a representation of pieces with all known variations shown with the Rose Point etching. All of the production lines and many rare and hard to find items produced are included. This differs from the other NCC Rose Point publications by having photographs of actual items, not reprints of catalog pages. Each illustration is ½ scale, which helps collectors see sizes accurately. Additionally, like items are grouped together (stems, candlesticks, vases, etc.) which allows faster and more complete searches by collectors.

Collectors will still benefit from the existing Rose Point 2nd edition book if they are looking for additional history, advertising, and background information about Rose Point.

Gary Turner has collected Rose Point with a passion for nearly 40 years. During the past year, he has worked with a team consisting of Jim and Nancy Finley, Nyla and Bruce Stanton, David Ray, Lynn Welker, Larry Everett, Freeman Moore, Rick Jones, and Doug Ingraham to bring this book to print.

Gary has transferred ownership of the book to NCC,

thus allowing NCC to benefit from all proceeds from the book. You’ll find the book order form on page XX of this Crystal Ball as well as on the NCC website. Members can order their copy for \$27.00 plus \$5.00 shipping/handling. Non-member price is \$29.99 plus s/h.



Gary Turner

What’s Inside

Cambridge Rose Point - a new book available	1
President's Message	3
The Sisterhood of Cambridge Glass	4
Good Times at the Museum	6
From the Editor	7
NCC at NDGA 2016	7
2017 NCC Auction Consignment Procedures	8
Crystal Ball Index 1993 - 2002	9
eBay Report	13

National Cambridge Collectors, Inc.

PO Box 416 Cambridge, OH 43725-0416

Board of Directors

	2017	
Ken Filippini	Millie Loucks	Freeman Moore
	2018	
Julie Buffenbarger	Doug Ingraham	David Ray
	2019	
Rick Jones	Lindy Thaxton	Lynn Welker
	2020	
Cindy Arent	Larry Everett	Sharon Miller

Officers

President	David Ray
Vice-President	Doug Ingraham
Secretary	Sharon Miller
Treasurer	Millie Loucks
Sergeant-at-Arms	Larry Everett

Director of Strategic Planning	Ken Filippini
Director of Human Resources	David Ray
Chair, Standards Committee	Sharon Miller
Chair, Endowment Committee	Doug Ingraham

Member Services

Vice President

Member Relations
Convention
Digital Media
Glass Dash
Glass Show
Study Groups
Webmaster

Rick Jones
Freeman Moore - Membership Database
Rick Jones - Convention Director
Alex Citron - Manager of Facebook Operations
Larry Everett & Frank Wollenhaupt
Sandra Bridwell-Walker & Roger Loucks
Jeannie Moore - Study Group Coordinator
David Adams

Development

Vice President

Campaigns

Events

Projects
Publicity

(vacant)
Ken & Jane Filippini - Annual Fund Directors
Larry Everett - Director of the Heritage Society
Will & Bev Acord - Auction Managers
Lynn Welker - Auction Manager
Carl Beynon - Jeweler & Scotties Project Manager
Jonathan Fuhrman

Education

Vice President

Crystal Ball
Publications
Media Productions
Research
Programming

Larry Everett
Freeman Moore - Executive Editor
Mark Nye - Director of Publications
Dave Rankin - Director of Media Productions
Mark Nye - Archivist
Greg Vass - Director of Programming

Museum

Vice President

Public Operations

Facilities & Grounds
Collections
Merchandise Sales

NCC History
Community Relations

Cindy Arent
Sandra Bridwell-Walker - Docent
Julie Davey - Docent
Sandy Rohrbough - Docent
Betty Sivard - Docent
Gary Wiseman - Docent
Carl Beynon - Director of Facilities
Lynn Welker - Director of Collections
Lynn Welker - Gift Shop Manager
Cindy Arent - Gift Shop Manager
Mark Nye - Archivist
Cindy Arent

Administration

Vice President

Accounting & Finance
Information Technology

Ken Filippini
Lisa Neilson - Office Manager
(vacant)

ADDRESS CHANGES

Please send address changes to:
Membership - NCC
PO Box 416
Cambridge, OH 43725-0416
or by e-mail to:
membership@cambridgeglass.org



CONTACT US

136 South 9th Street
Phone: 740 432-4245
nccglass@yahoo.com



David Ray, President
e-mail: westervillesh@hotmail.com
Sharon Miller, Secretary
e-mail: secretary@cambridgeglass.org

Heritage Society

Ensuring the preservation mission of the NCC through planned giving and estate bequests.

Members of The Heritage Society are those who have included the NCC in their wills or estate plans, thus providing the organization with a secure future.

The mission of The Heritage Society is to foster smart estate planning and to assure that NCC is not forgotten as an important beneficiary. Any pledge is meaningful and appreciated.

All Cambridge collectors - both current and future - will benefit from, and be grateful for your support.

Let us know how we can help with your future plans.

NCC Website: www.CambridgeGlass.org

Miami Valley Study Group Website: www.mvsg.org



PRESIDENT'S MESSAGE

The 2016 Annual Convention & More...

Congratulations to convention director Rick Jones and a team of volunteers who organized a unique series of **Hollywood**-related events and educational programs for more than 150 Friends of Cambridge who attended the 2016 annual convention. Convention kicked off on Wednesday evening at the National Museum of Cambridge Glass with wine tasting and appetizers. Members attending this event received a red carpet treatment Hollywood stars experience when arriving for the Oscars or the Academy Awards. A freshly stocked gift shop and first-class museum greeted members for a relaxing evening of shopping, conversation, and learning about Cambridge glass.

On Thursday morning, 20 glass dealers from around the country began the strenuous task of unpacking glassware and staging their booths for the glass show. Yes, you read correctly. There were 20 glass dealers set up at this year's glass show. Every usable square foot of the showroom floor was utilized for dealer space. The success of recruiting new dealers for the glass show was the result of the combined efforts of Rick Jones and Sandy Bridwell-Walker. Once accepting the role of Glass Show Director, Rick recruited Sandy to assist him in recruiting the country's finest elegant glass dealers for this year's show. Seven first-time dealers and three previous dealers combined with ten of our long-time dealers to create a breath-taking display of elegant glassware. Buyers attending this year's glass show were treated to an amazing variety of high-quality and unusual pieces of Cambridge glass for sale.

During Thursday's evening meal, I had the pleasure of announcing the 2016 recipient of the Phyllis Smith Award. Each year at the March board meeting, the board of directors accepts nominations for the Phyllis Smith Award. This award was created to honor Phyllis Smith by acknowledging non-board members who selflessly volunteer their time supporting NCC. Over the years, most members receiving the Phyllis Smith Award lived local to the Cambridge area and volunteered their time maintaining the physical property at the museum or mold

storage building. This year's award recipient is different. For the past 20 years, Fleur de Lys Healy has set up Cambridge books tables at glass shows throughout Florida and neighboring states sharing her passion for Cambridge glass and love of the National Cambridge Collectors. In addition, Fleur de Lys has generously supported NCC's many capital improvement projects. In all, Fleur de Lys's cash gifts total more than \$45,000. On behalf of the board of directors, I thank Fleur de Lys for her generous support of NCC and congratulate her on receiving the 2016 Phyllis Smith Award.

Gary Turner, a long-time Rose Point collector, has worked more than 30 years to create the ultimate reference book on Cambridge Rose Point. At the November 2015 board meeting, Gary asked NCC for technical support to make his dream a reality. I encourage you to read the announcement on page 1 and if you're a Rose Point collector, purchase this amazing reference book at the museum or through the NCC Ebay store

Ballots for the 2016 election to the board of directors were mailed in April along with the Annual Fund materials. Ken Filippini announced that more 500 ballots were cast in this year's election. This year's candidates included: Cindy Arent, Sandy Bridwell-Walker, Bill Dufft, Larry Everett, and Sharon Miller. The nominees elected to serve on board of directors are Cindy Arent, Larry Everett, and Sharon Miller. Sandy Bridwell-Walker received a sufficient number of votes to serve as the first alternate. Congratulations to Cindy, Larry, and Sharon. After the Annual Meeting, board members gathered to elect officers for 2016. The officers include: President – David Ray, Vice-President – Doug Ingraham, Treasurer – Millie Loucks, and Secretary – Sharon Miller. Larry Everett was appointed Sergeant-at-Arms. I am humbled and honored to serve as your President. I must thank the board of directors and the entire membership for their continued support and hard work toward sustaining our strong and vibrant club.

Sincerely,

David Ray
westervillesh@hotmail.com

The Sisterhood of Cambridge Glass

by Gerald Vaccarella

I always feel like a treasure hunter when looking for collectibles, especially glass and most especially, Cambridge glass. Will there be a shining piece of gold someplace? I'm always pursuing in spades, full gallop ahead. A recent Saturday morning found me at the entrance to a local nunnery in their welcoming area. On this day there was a hustle and bustle to raise funds for the church. The nunnery was closing and I could see inward emotion on some faces as I talked to several nuns on my way through the large nunnery. The sisters have always seemed cheery and upbeat to me. I observed this pleasant way working with nuns who taught in my public school district as teachers. They handed over their paychecks to the diocese for the greater good of their church. I see nuns as noble soldiers of their faith.

Their humor always seems to rise to the occasion as it did this day but I could feel and sometimes hear emotional sentiment lurking underneath. I remember going into a few of the sparse bedrooms looking for collectibles and thinking about the sacrifices the sisters made for their spiritual life. As I made my way through the building I found a nun sitting in a chapel off the long row of sparse bedrooms in the south wing. She had a simple white veil on with a gray mohair sweater, resilient and durable, as she appeared to be to me. With a quick look around I found a few objects of interest including religious articles but the conversation was more intriguing about the sisterhood. The conversation was quieter in the farther corners of the nunnery as I heard the sparkle of days past and memories made. This sister had short neatly shorn gray hair with a creamy weathered face. I realized in those moments nuns were more like a close knit tribe or a perfect piece of brilliant Cambridge glass that had been blown brilliantly hot but soon became a smooth shiny surface all in one gorgeous entity. Nuns seem to complement each other so well that way.

The light patter of making the deal ran through everywhere but it always ended in harmony and humor. After some final good byes and purchases I made my way out but then I slowly took one last look around some multiple garages I passed before entering the nunnery. They were full of endless wicker or woven flower baskets and some ordinary tools as well. I guess I lingered a bit there but nothing was for me so on I traveled

to the next estate sale.

As I drove away to the next sale I began to think about the nunnery when I first went there forty years before. I remember it was a muggy, hot summer Saturday. Imagine returning to a place forty years later between visits! The first time the sale was in a great hall filled with tables, people and very warm. No air conditioning in this nunnery. I was inside looking everywhere for hidden gold, maybe a number 3900/24 Rose Point dinner plate underneath a nondescript ceramic plate? There had to be something that pleased or excited my wandering eye.

I talked with different nuns. They smiled and gently bargained with me in the mostly glass aisle. People were crisscrossing each other like grand central station. I remember the sister's humor with their calm and cool ways against the hunters who were almost in a frenzied state. Forty years later, I usually visit sales after the herd has already rushed past like Macy's newest black Friday! Those years ago I remember being in the middle of the stampede as bodies stampeded by. I glanced high for some reason. Although I couldn't see much of it, I saw something sparkle kind of behind something. A smiling nun wondered what I was staring at. She must have been staring my way. I said, "I see something blue with a handle. Could you get it down for me?" There was a counter between me and the shelf and this pleasant nun got up on her black toed shoes and reached the pitcher with enthusiasm." How much is it?", I asked quizzingly. After some effort the beautiful blue sparkling glass was lowered to my level. Looking it over the sister exclaimed, "For you just \$10", she smiled. "There was a \$14 sticker on it." Charmed by a pleasant nun, with black toed industrial looking shoes, she went on, "We're in the second day of the sale". She further explained, "You can get a reduced price on items". I looked at the pitcher and knew that it was of value but I needed to make a quick response. I saw others making their way toward us and quickly replied, "\$10 is fine". The hunters might have seen my prize from a distance. I knew what the glass piece was but I was less sure of its value. I had an idea of the value but less than a year on the glass trails I wasn't sure it was worth ten dollars. For the previous year and the many years af-

ter I have been an ardent student devouring every glass book I could get my hands on. My motto is, knowledge is king. My father always said you can learn something new every day of your life. The nun was so cordial that day. I can still see her pleasant face. She wrapped my jug and a few other minor treasures. I made the rounds of estate sales and eventually took my treasures home. The blue Caprice #183 ball jug I bought that day at



the nunnery was my first significant piece of Cambridge glass. It still sits in my china cabinet.

Almost forty years later after the purchase of my handsome blue Caprice ball jug, it was a sad last day at the nunnery. They sold or donated every stick of furniture, glassware, religious article and equipment. The nunnery is closed tight now but on that muggy day, forty years ago there was a hustle-bustle to raise funds for the church and a vibrant sisterhood.

My interactions with fellow Cambridge collectors is not much different from my encounter with the sisters at the nunnery. We share a common interest and cherish a bargain. We are stewards of this beautiful glass for future generations. ■

In Memoriam

Patricia “Patty” Ann Rutledge passed away June 26, 2016 in Cambridge, Ohio. She joined the National Cambridge Collectors, Inc. in August 2002 and was member #7136. Patty was born in Cambridge in 1930 and retired in 1989 as a supervisor from General Telephone where she was employed for over 40 years. Patty’s biggest joy was downtown Cambridge, her community and her Church. Patty rode on the NCC float in the 2006 Christmas Parade and supported our organization in many ways. She will be missed by her many friends in downtown Cambridge.

Patriotic Colors



Jim and Nancy Finley's dining room table is decorated with Cambridge glass to celebrate July 4th

Phyllis Smith Award winners



- 2003 Carl Beynon
- 2004 Jeff Ross
- 2005 Alex Citron
- 2006 Jeannie Moore
- 2007 Squeek and Dorothy Rieker
- 2008 Lindy Thaxton
Helen Klemko
- 2009 Ken and Judy Rhoads
- 2010 Frank Wollenhapt
- 2011 Tarzan Deel
- 2012 Vicki Wollenhaupt
- 2013 David Rankin
- 2014 Joe Miller
Mike Strebler
- 2015 Rich Bennett
- 2016 Fleur de Lys Healy

The plaque with all the names is displayed at the museum.

Good Times at the Museum

By Cindy Arent

It's always fun seeing old friends and meeting new ones at the museum during convention and this year was no exception. The museum was certainly a happy place to be. "Thank you" for your continued support and donations!

On Thursday morning of convention, members were invited for a group tour of the museum. The tour began in the auditorium where members viewed the Crystal Lady film and enjoyed dressing as glassworkers. The group was then divided in half. One group was led on a tour of the glass display area while the other visited the Edna McManus Shepard Education Center. The groups were then changed so everyone visited each of the areas. Members heard what motorcoach groups learn when they visit the museum.

Coffee with Cambridge was held at the museum on Friday morning. Members enjoyed delicious donuts and coffee while visiting with friends, looking at the beautiful glassware and shopping in the gift shop. During this time, Freeman and Jeannie Moore were also hosting the First Timers event in the auditorium.

If you couldn't attend convention this year, we missed you! Hopefully you will be able to come in June 2017. The welcome mat is out anytime during the season.

We look forward to seeing you!



Members enjoyed being a "tour group" at the museum during convention. This photo was taken outside the museum at the conclusion of the tour.



William C. McCartney was Secretary/Sales Manager at the Cambridge Glass Company for 50 years. During convention weekend, three generations of the McCartney family came to see the museum.

Second from the right is Mary Lou McCartney Nash standing under her father's picture.



Dixie Wyler, Sales Manager at the Cambridge/Guernsey County Visitors & Convention Bureau, was a guest of NCC at the Friday evening banquet. Shown in the photo left to right are: Dixie Wyler, David Ray and Cindy Arent.

From the Editor:

In case you didn't notice it on the cover, this is issue #500 for the *Crystal Ball*. The first issue appeared in May 1973. There have been several editors over the years and they deserve recognition for all the work they did. Kudos to Phyllis Smith for editing 179 issues!

Editor	Issues	Start	End
Dick Pavlov	1 - 27	May-73	Jul-75
Phyllis Smith	28 - 99	Aug-75	Jul-81
Peg Gotschall	100 - 120	Aug-81	Apr-83
Janice Hughes	121 - 124	May-83	Aug-83
Phyllis Smith	125 - 231	Sep-83	Jul-92
Sue Rankin	232 - 260	Aug-92	Dec-94
Rick Jones, Mark Nye	261 - 270	Jan-95	Oct-95
Lorraine Weinman	271 - 354	Nov-95	Oct-02
Alex Citron	355 - 403	Nov-02	Jan-07
Helen Klemko	404 - 473	Feb-07	Dec-16
Freeman Moore	474 - ?	Jan-14	Sep-16

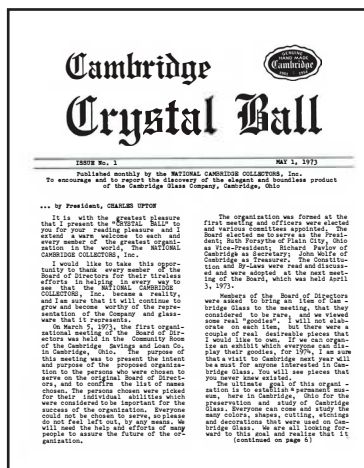
There have been changes over the years, with the biggest change being the switch from manually cutting and pasting paper, to electronic production. Electronic production allows for a color edition of the *Crystal Ball* to be emailed, while sending a black/white version to the printer for first class mailing.

Thanks to the Miami Valley Study Group for their effort in scanning every past issue and making them available on their website.

Like every editor before me, I'm always looking for your suggestions and articles for the *Crystal Ball*. Let's keep it going for many years to come.

Thank you,
Freeman Moore

Issue #1
May 1973



NCC at NDGA 2016

by Freeman Moore

The National Depression Glass Association (NDGA) convention was held July 16-17, 2016 in Tiffin Ohio. Attendees came from across the United States to look for that special piece of glass from among 32 dealers, learning at seminars, partaking in tours, and in general, having a great time. As usual, there was an outstanding set of displays at the convention. Cambridge glass was featured in a display of Rubina items, and a second display from the Museum featuring all of the Cambridge colors. Freeman and Jeannie Moore staffed the NCC information table, which was one of twenty club information tables.



Our thanks to NDGA for providing space for our table and supporting the sharing of information among the various glass organizations. NDGA selects a different location for its annual convention and show. Next year, it will be held July 15-16 in Wellington, Kansas. I would encourage NCC members make plans to attend the show, seminars and see the assortment of displays.



Cambridge Rubina

2017 NCC AUCTION CONSIGNMENT PROCEDURES

Some changes to the 2017 NCC Benefit Auction Procedures.

The auction will be held on Saturday, March 4th, 2017. The Quarterly Meeting has been moved to Saturday October 15th, 2016. This will result in changing some due dates for Consignors submitting their lists and mailing or bringing the accepted items to the Quarterly meeting.

1. Consignors must submit their list to the Auction committee by Wednesday August 31, 2016. If at all possible, please try to follow this format to make our job a little easier. Submit your list in Excel or Word document (preferably Excel). An example of how you should describe an item:

<u>Cat. Num</u>	<u>Color</u>	<u>Description</u>
3500/77	Rose Point	4½” Candy Box and Cover
3011/3	Royal Blue	Statuesque 7 oz Champagne
3011/27	Crystal	Statuesque Blown Comport

A great reference guide to identify your items is listed below

<http://albums.mvsg.org>

2. (Please note any damage such as nicks, cracks, discoloration etc.)

If you do not have access to either Excel or Word, you can submit your list in an email to beverlyacord@gmail.com (saves postage for you). Please indicate “NCC Auction” on the subject line and include your mailing address and phone number. For those of you who do not have a computer continue to mail your lists to:

Beverly Acord
6789 Liberty Farms Ct.
Hamilton, OH 45011

3. The Auction Committee will make final selections and notify consignors by Tuesday September 20, 2016. We select approximately 400 pieces of glass. If you question why certain pieces are not chosen, it does not mean that they are undesirable; and we encourage you to submit them again another year. It can mean different things: we already have chosen a similar piece from another consignor, or we can only accept a certain number of pieces from each consignor to be fair to all.
4. Consignors will either mail or bring their glass to the Quarterly meeting on Saturday October 15, 2016. Those who will not be attending the Quarterly meeting will have approximately 3 weeks to mail their items. Please DO NOT MAIL Lists or Glass TO THE

MUSEUM. The address for shipping your glass will be included in your acceptance Letter.

For those consignors able to bring their glass with them while attending the October Quarterly Meeting, you save on shipping charges, avoid potential breakage in transit, and, best of all, you get to attend a great NCC function including an excellent dinner and program accompany the meeting. In the event that we accept an item based on the consignment list, and it is determined not to be Cambridge glass, we will hold it for pickup by the consignor or have it mailed once they send us the return shipping charge.

5. A few pointers on the glass you are submitting.
 - Please, CLEAN glass only – it sells so much better when it is CLEAN. If we have to clean your glass, the chances of the item getting damaged is greater and we will not be responsible if it is damaged.
 - Make sure prior sales stickers or glue from stickers is removed. There are great products on the market to remove the stickers.

This is a benefit auction for your favorite club, and we want to realize as much profit as possible. On all consignments, NCC retains 20% of the purchase price, the consignor receives 80%. This auction does not allow for reserves or minimum prices. There are no buyer’s premiums charged. Let’s help make the 2017 NCC Benefit Auction successful.

Donations are welcomed and ENCOURAGED as well, and 100% of the purchase price goes to NCC. Some lower-value donated pieces may be sold in the museum’s gift shop rather than be included in the auction, if the committee feels that will yield a better price.

The committee needs to strictly adhere to all dates mentioned as we only have a few short weeks to properly inspect, identify and have a completed auction catalog sent to the Crystal Ball editor, so that it can be included in the January issue and posted on the NCC web site. We would like to thank all consignors in advance for their timeliness in each step of the procedures.

We encourage you to consider consigning and donating good quality pieces of Cambridge glass. If you have any questions, please feel free to email at beverlyacord@gmail.com. And for complete auction info, don’t forget to check out our Auction web site at www.cambridgeglass.org and click on the Auction tab. We are excited to see what you have in store for us this year!

Crystal Ball

Table of Contents

July 1993 thru December 2002

INTRODUCTION

In 1979, an index to the first 68 issues of the Cambridge Crystal Ball, compiled by Luene B. Brandt, was published for current members of the National Cambridge Collectors, Inc. It, along with all back issues of the publication, remains available to members.

A follow up to that index was published in 1992. It provided a table of contents covering January 1979 – June 1992.

This listing continues in the style of the previous table of contents. While not an index in the research nomenclature, it provides, in chronological order, a listing of articles dealing with all aspects of the Cambridge Glass Co. published in the Cambridge Crystal Ball during the period July 1992 - December 2002. Thus, this is a table

of contents for issues #237 through #356. Articles dealing with club functions, presidential messages and club news are not included.

For each article, the issue date, issue number, the subject or title of the article and the author's last name is provided. Full names of the authors are provided at the end. No attempt was made to list multiple topics covered in some articles; for example, articles on colors, vases, etc., or when more than one color of item was discussed in article.

Thank you
 Editor, NCC Crystal Ball
 August 2016

Issue Date	Issue No.	Author	Subject or Title	Issue Date	Issue No.	Author	Subject or Title
Jan 1993	237	Nye	Trade Shows	Apr 1993	240	Nye	The First 20 Years of NCC: More Progress
Jan 1993	237	Nye	3778 Stemware	May 1993	241	Nye	Caprice Stemware - a Sneak Preview
Feb 1993	238	Nye	Trade Tariffs	May 1993	241	Miller	Worker of the Month: Olga Berilla
Feb 1993	238	Upton	Cambridge History from News Articles	Jun 1993	242	Nye	How Green It Was - Part I
Feb 1993	238	Nye	New Trademark	Jul 1993	243	Nye	How Green It Was - Part II
Mar 1993	239	Nye	1938 Advertising	Jul 1993	243	Rankin	Mah-Jongg Tiles
Mar 1993	239	Nye	1938 In Review	Aug 1993	244	Nye	How Green It Was - Part III
Apr 1993	240	Nye	Cambridge at 20	Aug 1993	244	Tostenson	Cambridge History from News Articles
Apr 1993	240	Allen	The First 20 Years of NCC: How it Began	Aug 1993	244	Rankin, D.	Mah-Jongg Tile Update
Apr 1993	240	Upton	The First 20 Years of NCC: Memories and Commentary	Sept 1993	245	Rankin, D.	The Regal Lion
Apr 1993	240	Smith	The First 20 Years of NCC: The Cambridge "Wonder Years"	Sept 1993	245	Nye	Smokers Items - Part I
Apr 1993	240	Kolb	The First 20 Years of NCC: Reminiscing with a Past President	Oct 1993	246	Nye	Lemon Squeezers
				Nov 1993	247	Nye	Patented Lock Bobeche
				Dec 1993	248	Nye	Smokers Items - Part II

Issue Date	Issue No.	Author	Subject or Title	Issue Date	Issue No.	Author	Subject or Title
Jan 1994	249	Nye	Ebony, Part I	Jun 1995	266	Deel	Turn Tickets: Insight into the Business of Glass Making - Part I
Jan 1994	249	Tostenson	Cambridge History From News Articles	July 1995	267	Deel	Turn Tickets: Insight into the Business of Glass Making - Part II
Feb 1994	250	Nye	Ebony, Part II	July 1995	267	Nye	Crown Tuscan - The Early Years
Feb 1994	250	Nye	Bennett, of Cambridge	July 1995	267	NCC	1940 Catalog Announcement
Mar 1994	251	Nye	The Making of Flower Holders	July 1995	267	Weinman	Worker of the Month - Martha Spear Barlow
Mar 1994	251	Nye	Method of Making Flower Vase Inserts	Aug 1995	268	Nye	What Ho! Stimulators
Apr 1994	252	Nye	Flower Vase Inserts	Sept 1995	269	Nye	Martha Washington
Apr 1994	252	Walker	The More I Learn, the Less I Seem to Know	Sept 1995	269	Fenton	Follow-up on Turn Tickets
May 1994	253	Kolb	Sequoia / Arcadia, Part I	Oct 1995	270	Nye	Another Look at Blossom Time
May 1994	253	Rankin, D.	Sequoia / Arcadia, Part II	Nov 1995	271	Nye	Rosepoint Design ... Now on Glassware
May 1994	253	Nye	The Roaring Twenties	Dec 1995	272	Nye	Chantilly
May 1994	253	Walker	Who was Ruben Haley? - Part I	Dec 1995	272	Nye	Development of Etched Glass in the U.S. - Part I
Jun 1994	254	Nye	Polishing Door Knobs	Jan 1996	273	Nye	Candlelight
Jun 1994	254	Walker	Who was Ruben Haley? - Part II	Jan 1996	273	Unger	Some Old Friends Revisited
Jul 1994	255	Nye	The Cambridge Glass Co & the 1920s	Jan 1996	273	Bennett	Hidden Treasures
Jul 1994	255	Rankin, S.	Museum Landscaping	Feb 1996	274	Nye	Gloria
Aug 1994	256	Nye	Smokers' Items - Part III	Feb 1996	274	Nye	Development of Etched Glass in the United States - Part II
Aug 1994	256	Rankin, D.	Interesting Etchings	Feb 1996	274	Bennett	Hidden Treasures - A Dream Come True
Sep 1994	257	Nye	Smokers' Items - Part IV	Mar 1996	275	Nye	Cambridge Arms, Smart Table Appointments
Sep 1994	257	Tostenson	Cambridge History from New Articles	Mar 1996	275	Nye	Development of Etched Glass in the United States - Part III
Oct 1994	258	Nye	Smokers' Items - Part V	Mar 1996	275	Bennett	Hidden Treasures - The Second Dump
Oct 1994	258	Walker	A.J. Bennett's Resourcefulness	Apr 1996	276	Nye	Sea Shell Line
Nov 1994	259	Nye	Smokers' Items - Part VI	May 1996	277	Nye	Early Cambridge Etchings
Dec 1994	260	Nye	Glass Christmas Ornaments	Jun 1996	278	Nye	Krystolshell
Jan 1995	261	Nye	Pricing of the #1570 Cheese Preserver	Jul 1996	279	Nye	Rock Crystal Promotion
Feb 1995	262	Nye	The Question is: What Retailers? - Part I	Jul 1996	279	Upton	A Piece of A.J. Bennett History
Mar 1995	263	Nye	The Question is, What Retailers? - Part II	Aug 1996	280	Nye	How it all Began - Part I
Mar 1995	263	Walker	Live and Learn - the "Cut Shut" mold	Sep 1996	281	Nye	How it all Began - Part II
Mar 1995	263	Nye	Table Architecture	Sep 1996	281	Cambridge	#3400/41 Cocktail bowl and Liner, Color Novelty Decorations
Apr 1995	264	Nye	Cooperative Displaying - reprint	Oct 1996	282	Nye	How it all Began - Part III
May 1995	265	Cambridge	3400 Jugs - Patent drawings	Nov 1996	283	Nye	How it all Began - Part IV
Jun 1995	266	Nye	Thirties Superstars: Figure Stem line				

Issue Date	Issue No.	Author	Subject or Title	Issue Date	Issue No.	Author	Subject or Title
Dec 1996	284	Nye	How it all Began - Part V	Jun 1998	302	Nye	Diane - A Second Look
Jan 1997	285	Nye	Out of the Past	Jun 1998	302	Hagerty	Repros & Logos
Feb 1997	286	Nye	Oil, Gas and Electric Lamps	Jun 1998	302	Bourque	The Controversial Near Cut Water Set
Mar 1997	287	Nye	Cambridge Square	Jul 1998	303	Nye	Cambridge Glass Co. at 25 Years
Apr 1997	288	Nye	1950s Stemware - Part I	Jul 1998	303	Otten	What's in a Stem?
May 1997	289	Nye	Daffodil	Jul 1998	303	Bourque	The Silver Figurehead
Jun 1997	290	Nye	1950s Stemware Part II	Aug 1998	304	Nye, Deel, Hanes	A Deep Subject - the Flood of 1998
Jun 1997	290	Bourque	Metal-Handled 64 oz. Doultons	Aug 1998	304	Nye, Deel, Hanes	Afterwards
Jul 1997	291	Nye	Connoisseur Stemware	Sep 1998	305		Hard Work and Hope ...
Jul 1997	291	Bourque	The Georgian Peach Basket	Sep 1998	305	Nye	Pioneering in Quality Glassware at Cambridge
Aug 1997	292	Nye	1950s Stemware Part III	Sep 1998	305	Bourque	The Silver Figurehead Part II
Aug 1997	292	Bourque	The Elusive Tomahawk	Oct 1998	306	Nye	Reproductions - Part II
Sep 1997	293	Nye	Cambridge in the 1920s(Part I)	Oct 1998	306	Bourque	The Controversial Near Cut Water Set - Part II
Sep 1997	293	Bourque	About the Trademark	Oct 1998	306	Otten	From Asia, With Love
Sep 1997	293	Walker	"Chipped" Glass Treatment	Nov 1998	307	Nye	Nautilus
Oct 1997	294	Nye	Cambridge in the 1920s Part II	Dec 1998	308	Eaves	Carnival Treasures
Oct 1997	294	Bourque	The Jug with the Hidden Trademark (Nearcut)	Dec 1998	308	Otten	To Hock or to Hoch, That is the Question
Nov 1997	295	Nye	Cambridge in the 1920s Part III	Feb 1999	310	Nye	Cambridge Confusion
Nov 1997	295	Bourque	The First Cambridge Plate Etch Design	Feb 1999	310	Otten	Have a Heart
Dec 1997	296	Walker	Cambridge Iridescent Glass	Mar 1999	311	Eaves	Carnival Treasures
Dec 1997	296	Nye	Cambridge in the 1920s Part IV	Mar 1999	311	Nye	Little Things
Dec 1997	296	Bourque	The Glad and Sad Parts of Collecting - Part I	Apr 1999	312	Nye	Reproductions, Reissues, Etc.
Jan 1998	297	Nye	Cambridge and the 1930's - Part I	May 1999	313	Nye	Cambridge Glass Co. Anniversary
Feb 1998	298	Nye	Cambridge and the 1930's - Part II	Jun 1999	314	Hansen	The Cambridge Swans - Part I
Feb 1998	298	Bourque	The Glad and Sad Parts of Collecting - Part II	Jul 1999	315	Hansen	The Cambridge Swans - Part II
Mar 1998	299	Nye	Cambridge and the 1930's - Part III	Sep 1999	317	Hansen	The Cambridge Swans - Part III
Mar 1998	299	Bourque	The Glad and Sad Parts of Collecting - Part III	Sep 1999	317	Nye	Candlesticks
Apr 1998	300	Nye	Reproductions	Nov 1999	319	Hansen	The Cambridge Swans - Part IV
Apr 1998	300	Bourque	The Glad and Sad Parts of Collecting - Part IV	Nov 1999	319	Nye	Cambridge Ritz Blue
Apr 1998	300		More Info about Radioactive Glass	Dec 1999	320	Nye	The Cambridge Glass Company
May 1998	301	Otten	This is a Fine Arrangement!	Jan 2000	321	Nye	Stemware - 3500 Line
May 1998	301	Bourque	The Opal Novelty Decanter No. 308	Feb 2000	322	Hansen	Cambridge Swans - Part V - Reissues
				Mar 2000	323	Hansen	Cambridge Swans - Part VI - Mold Orders

Issue Date	Issue No.	Author	Subject or Title
May 2000	325	Nye	Minerva & Valencia - A Revisit
Jun 2000	326	Nye	Apple Blossom - A Revisit
Jul 2000	327	Otten	Oh My Stars!
Jul 2000	327	Walker	Surprise
Jul 2000	327	Otten	All Wine Should Be Served in Stemmed Glasses
Sep 2000	329	Nye	Cleo - A Revisit
Oct 2000	330	Nye	Promotions - 1937 Style
Oct 2000	330	Filippini	Collecting in the 21st Century
Nov 2000	331	Nye	Price Increases - 1937 Style
Dec 2000	332	Nye	Marketing - 1930s Style
Feb 2001	334	Nye	Decorative Lighting - Late 1930s Style
Mar 2001	335	Nye	Hurricane Lamps in the Circular Letters
Mar 2001	335		Cambridge Animals and Marine Life
Apr 2001	336	Nye	New for 1939
May 2001	337	Nye	New Use for an Old Item and More
June 2001	338	Walker	Cambridge Glass with Silver Decoration
July 2001	339	Nye	Nearcut Era - Nappy and Comport Shapes
Sept 2001	341	Nye	Smoker's Items
Sept 2001	341	Walker	Cambridge Glass Talk with Wib Orme
Oct 2001	342	Nye	Sales Promotions - 1929 Style
Oct 2001	342	Desmond	Discovering Royal Blue Mount Vernon
Nov 2001	343	Everett	The Everglade Line
Dec 2001	344	Nye	Crown Tuscan Nautilus Lamp
Dec 2001	344	Hansen	Peach-Blo and Dianthus Pink - Is there a Difference?
Dec 2001	344	Otten	Getting Punchy
Mar 2002	347	Moore	Investigating the Keyhole
May 2002	349	Nye	Cambridge Glass - How it Began
May 2002	349	Arent	New Museum Opens
Jun 2002	350	Hansen	Henry Hellmers - The Genius Behind the Glass Colors of Cambridge
Jun 2002	350	Hansen	Formulas for Cambridge Colors in the Hellmers Batch Book

Issue Date	Issue No.	Author	Subject or Title
Jul 2002	351	Walker	Super Glass at the Cambridge Plant
Jul 2002	351	Nye	La Touraine - Line No. 2719
Aug 2002	352		The Grand Opening - June 27, 2002
Aug 2002	352	Nye	Lyre Candlestick
Sep 2002	353	Arent	Cambridge Experimental Cased Glass
Oct 2002	354	Arent	Cambridge Sample Room Glass
Oct 2002	354	Upton	What to Look For when Inspecting Glassware
Nov 2002	355	Citron	Insuring Your Glass
Dec 2002	356	Nye	The Cambridge Glass Company Catalogs

AUTHOR IDENTIFICATION

Allen, Evelyn
 Bennett, Rich
 Bourque, Joseph A. A. Sr.
 Citron, Alex
 Deel, Tarzan
 Desmond, Rich
 Eaves, Ruth
 Everett, Larry
 Fenton, Frank
 Filippini, Ken
 Hagerty, Bill
 Hanes, J.D.
 Hansen, Les
 Kolb, Willard
 Miller, Sharon
 Moore, Freeman
 Nye, Mark
 Otten, Georgia A.
 Rankin, Dave
 Rankin, Sue
 Smith, Phyllis
 Tostenson, Kurt
 Unger, Neil
 Upton, Charles
 Walker, Bud

This report is provided to keep members up with what's happening on the world's largest Internet Auction site, and focuses on Cambridge glass items that are seldom or rarely seen. Please note we cannot guarantee the accuracy of listings herein.

Welcome to the eBay Report. This column features Cambridge glass items that sold on eBay circa late May through early July, 2016. Selling prices have been rounded to the nearest dollar. Here we go:

Statuesque (Nude Stem) Line

A wide variety of Cambridge nude stem items continue to surface. Here are some of the highlights.

A true cordial (think: cupped-in rim) with Amber bowl sold for \$112. For comparison, the far more common brandy with an amber bowl brought only \$24. A brandy with a satinized stem and "odd green" bowl sold for \$46. A 9 inch table goblet with Royal Blue bowl, which had a tiny rim nick, brought \$120. An all-crystal claret sold for \$19. The same seller also offered one with a Forest Green bowl, which sold for \$54.



The ivy ball vase with Amethyst top sold for a too-low \$115. A champagne with Carmen bowl and satinized stem sold for \$229 on Buy It Now. Finally, a pair of candleholders in Windsor Blue sold for \$1500 on a Buy It Now offering.



Animals and Figural items



An amber Bridge Hound pencil holder with original label sold on Buy It Now for \$25. A turtle flower frog in crystal (domed back version) brought \$70. The seller aptly described it as "elusive."

A 1636 4-1/2 inch bird figure, better known as the "peg Blue Jay" sold quickly for a Buy It Now price of \$50. I've seen several sell right around that number lately, so that seems to be the current market price.



A #1222 covered Turkey in Peach Blo was quickly gobbled up for \$595 on Buy It Now, even with very small nick on the inner rim of the lid.

A one bun Geisha figurine in Bluebell sold for \$800 on Buy It Now. It was not the version with the screw-on flower frog base; it was the figurine-only version. Interestingly, the seller stated that it was "fused" to a clear glass base. I doubt that this is original; it

might have been added later to make the figure stand up without falling over so easily.

Etched Tableware and Stemware



A #1066 low footed tumbler or goblet with a Peach Blo bowl etched Diane brought \$39. Boy, am I glad that's not MY pattern. It would take several lifetimes to put together a set in this shape, color and etching.

A #3900/52 quarter pound butter dish etched Chantilly brought \$255.



A #172 9 oz handled syrup with chrome lid etched Rosalie brought a measly \$29. Okay, so it wasn't a color, but still – how often do you see this shape? Not very often.

One seller offered three different pieces of Decagon in Ebony with gold encrusted Lorna etching: a #856 rolled edge console bowl, a #972 11 inch two-handled plate, and a #977 two-handled "basket" (which, despite its appellation, does not have an applied handle.) Each piece sold for \$53, and was purchased by the same buyer. A Decagon gravy with liner plate in Peach Blo, etched Cleo, sold for \$90.

Rose Point



A #615 covered cigarette box sold for the \$99 opening bid. A pair of #3121 7-1/2 inch candleholders with etched bobeches and 8 prisms on each of them sold for \$145 on a Buy It Now offering.

The #3900/52 quarter pound (stick) butter dishes continue to bring hefty prices, this one selling for \$450. Note the price compared to the Chantilly one shown above.



A pair of pressed stem (not etched) Rose Point stems with Royal Blue bowls sold for \$76. As happens so often, they were not correctly identified as to size; however, the shape of the bowl and the 5-1/4 inch height tells us that they were actually wines. The same seller offered three matching juice tumblers, which sold for \$71.



Miscellaneous

The seller of an Emerald Green #507 covered temple jar etched #704 wasn't quite sure whether it was Cambridge or Fostoria, but this "etched vanity jar" (??) was sniffed out by Cambridge collectors and sold for \$96. I keep telling you: that Glassware – Elegant – Unknown Maker category can be a gold mine.

A footed covered candy with gold-encrusted Wedgwood etching and gold highlights sold for only \$26. A small footed comport (possibly from the #139 cheese & cracker set) in Pomona Green (formerly called "Avocado" green) sold for \$58 Buy It Now. A Tally Ho punch ladle with just a tiny nick on one ridge sold for \$35. I was thrilled to find one of these to complete my mother's Tally Ho punch set at the Rose Bowl flea market.



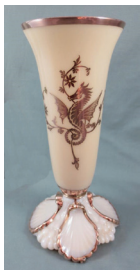
A #3400/136 bowl or vase with Rose Chintz etching sold for the opening bid of \$50. This is the 4-footed bowl that has been ruffled, then pulled up and scrunched in a bit. "Scrunch" is an original Cambridge glass term, you know. It appears in an original 1937 catalog, and I'm the only person who has a copy of it. And no, you can't see it. (And if you believe *that...*)



A #1 Keg Set in Emerald Green and Ebony, complete with stopper, stand, tray, and 6 barrel shaped whiskeys, sold for \$203. All it needs to go with it would be a green #843 or #845 "old oaken bucket" style ice bucket. An Amber 3-footed covered candy etched Rosalie brought \$29, with a tiny nick noted. Seller provided no measurements, so I can't tell you whether it was the #299 5 inch or #300 6 inch size. A Caprice #250 3-1/2 inch blown vase in Moonlight Blue sold for \$57.



A #48 9" Shell vase in Crown Tuscan with the Rockwell seahorse decoration in rose gold brought \$396. I was a little dubious that the decoration was actually gold, but upon closer inspection, I believe that the seller was right.



An Everglades low console bowl (tulips and rushes variation) in Eleanor Blue sold for \$250 on a Buy It Now. A #797 8 inch spiral optic vase with satinized interior in Emerald Green with gold encrusted Hunt etch rode its way to a mere \$57. Perhaps the slight wear to the gold decoration diminished the enthusiasm of the Cambridge hounds, who got too tired to chase this fox very far.



A #1297 vase with Amber bowl and crystal foot etched Apple Blossom brought \$200, despite some

minor flaws.



Finally, a rectangular Cambridge store display sign (the one that looks for all the world like the lid to a very large cigarette box) brought \$1,235. It has the words "Cambridge Made in U.S.A" and "Trade [C-in-a-triangle] Mark" in the center, filled with gold. (I can't quite tell from the seller's photographs whether it is impressed or raised, or acid etched into the surface – can someone tell us?) The border etching is an adaptation of the Willow pattern. I am embarrassed to say that I passed up one of these at a flea market probably 20 years ago because the gold was quite worn, and the seller was asking \$50 for it. When I saw what this one sold for, you could hear the sound of me slapping my head from coast to coast.

Unsold Items

The purpose of this column is to report the prices of items which actually sold. However, lately there have been some fine Cambridge glass offerings on eBay which have not sold, leaving me scratching my head and wondering why. Here are a couple:

A stunning Tally Ho beer set consisting of a 1402/50 76 ounce tankard pitcher in Forest Green with crystal handle, and six 1402/35 handled steins (i.e., beer mugs), most of which sported original labels, has been offered multiple times at \$295, with no takers. Hel-LO? What red-blooded, beer-drinking Cambridge-collecting man does not need this? I can't imagine that many of you guys already own this same set – in any color.



Finally, a #94-1/2 crimped vase in Willow Blue etched Rosalie was offered several times, last at a price of \$300, with no takers. When do you see this shape, in this color, etched? It wasn't cheap, but someday you're going to regret passing up this little gem!



Reader Comments

NCC member Dave Small read my frequently-expressed frustration that so many eBay sellers don't know a Statuesque cordial from a banquet goblet (much less a cordial from a brandy, or a wine from a claret.) He sent me a link to his master work, a comprehensive tutorial on Cambridge Statuesque items. What a labor of love! Every Cambridge glass collector owes Dave a debt of gratitude for his meticulous descriptions of this line. Check out his ad on page 19. Thank you, Dave.

That's all for now. If you see any interesting Cambridge glass on eBay that you think I should be watching or reporting on, or if you have any other input, feel free to contact me at LAGlass@pacbell.net. Until next month, happy Cambridge hunting!

Give this to a friend



The National Cambridge Collectors
P.O. Box 416 ~ Cambridge, Ohio 43725

“FRIENDS OF CAMBRIDGE” MEMBERSHIP

The National Cambridge Collectors, Inc. (NCC) is a non-profit organization dedicated to the education and preservation of the great work of the Cambridge Glass Company. Founded in 1974, we depend on the financial support of our members, who we call **Friends of Cambridge**, for the majority of our operating budget. Won't you consider becoming a Friend of Cambridge?

Friend #1 _____

Friend #2 _____

Friend #3 _____

(continue on reverse if needed - indicate any children and their year of birth, only those 18 and older residing in your household may vote)

Address _____

City/State/Zip _____

Email Address (required) _____

Phone Number _____

Crystal Ball newsletter delivery: ___ email (color) ___ paper (black & white)

Glass collecting interest: _____

New Member? (Y/N) ___ or Renewal? ___ If renewal, Member #s _____

Levels of Membership

	Patron \$ 35		
Century Level	\$ 100	Mardi Gras Level	\$ 200
Japonica Level	\$ 500	President's Circle	\$ 1,000

All members receive the Crystal Ball, free Museum admission and 10% off any book/DVD purchases, President's Circle includes Convention registration for two members in the household and one free copy of any new NCC publication.

All memberships are renewed annually via The Annual Fund mailing in late March/early April. All Annual Fund gift recognition levels are per household and include membership for everyone within the household 18 and older. Each household will receive a subscription to the Crystal Ball newsletter, unlimited admissions to the museum, and rights to vote in elections for the Board of Directors and discounts on NCC books. NCC is a 501(C)(3) organization and Annual Fund gifts are allowed as a tax deduction under Section 170 of the Internal Revenue Code. Contact your tax advisor for your individual situation.

Return this form with check or money order payable to NCC, Inc. at the above address.
And always visit us at www.cambridgeglass.org to see what's new!

For Sale - NCC Books and DVD

Published by NCC • Members receive a 10% discount

TITLE		REGULAR PRICE	MEMBER PRICE
1910 NearCut Catalog Reprint	108 pages, paperback, no price guide	\$14.95	\$13.45
1927-29 Catalog Reprint	66 pages, paperback, no price guide, includes identification guide	\$9.95	\$8.95
1930-34 Catalog Reprint	250 pages, paperback with 2000 price guide	\$14.95	\$13.45
1930-34 Catalog Index	Index for above	\$2.00	\$1.80
1949-53 Catalog Reprint	300 pages, paperback, no price guide	\$19.95	\$17.95
Cambridge Colors II (New)	Hardcover with price guide	\$19.95	\$17.95
Cambridge Rose Point – A Collector's Guide *** NEW ***		\$29.99	\$27.00
Caprice	200 pages, paperback, no price guide	\$19.95	\$17.95
Decorates	136 pages, paperback, no price guide	\$14.95	\$13.45
Etchings (2nd Edition)	102 pages, paperback, no price guide	\$17.95	\$16.15
Etchings, Non-Catalogued	70 pages, paperback, no price guide	\$12.95	\$11.65
Etchings: Blossomtime	26 pages, paperback, no price guide	\$7.95	\$7.15
Etchings: Candlelight	30 pages, paperback, no price guide	\$7.95	\$7.15
Etchings: Chantilly	44 pages, paperback, no price guide	\$7.95	\$7.15
Etchings: Diane	53 pages, paperback, no price guide	\$7.95	\$7.15
Etchings: Elaine	64 pages, paperback, no price guide	\$9.95	\$8.95
Etchings: Portia	57 pages, paperback, no price guide	\$7.95	\$7.15
Etchings: Wildflower	42 pages, paperback, no price guide	\$7.95	\$7.15
Rock Crystal Engravings	119 pages, paperback, no price guide	\$17.95	\$16.15
Rock Crystal Engravings (Listings)	Companion to above; lists all pieces in all patterns	\$9.95	\$8.95
Rock Crystal 1940 Illustrated Catalog & Price List		\$14.95	\$13.45
Rose Point - Second Edition	146 pages, paperback, no price guide	\$19.95	\$17.95
Pharmaceutical Catalog No.8 1915-1920 Reprint	68 pages, paperback, no price guide	\$9.95	\$8.95
Cambridge Arms compendium		\$7.95	\$7.95
1916 General Catalogue		\$13.95	\$13.95
Rose Point Program - DVD (Postage \$3.00)		\$19.95	\$17.95
Caprice Program - DVD (Postage \$3.00)		\$19.95	\$17.95

How to Order by Mail or from the NCC Website

Send orders to:
NCC • PO Box 416 • Cambridge, OH 43725

OHIO RESIDENTS PLEASE ADD 7.25% SALES TAX

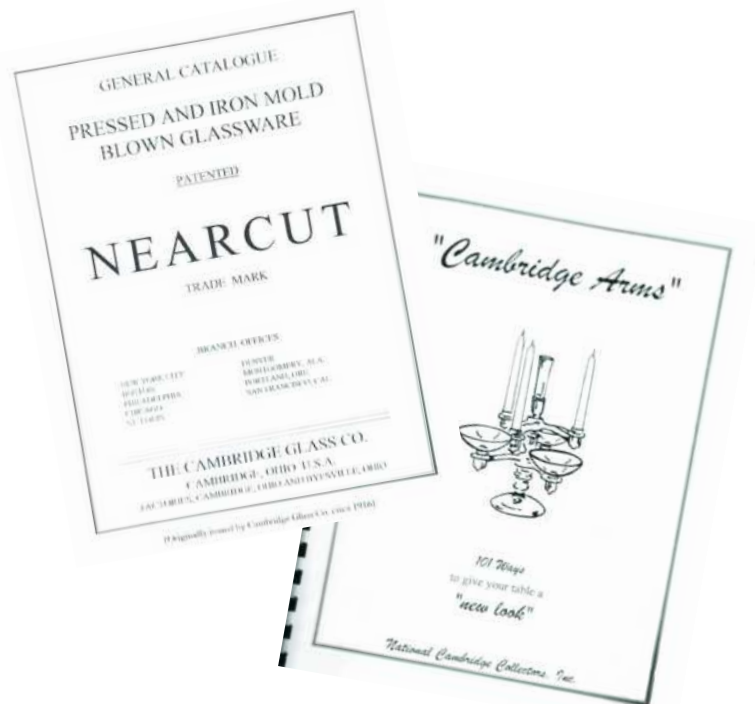
SHIPPING:
\$5.00 FOR THE FIRST PUBLICATION
\$1.00 FOR EACH ADDITIONAL ITEM

Please include your name, complete mailing address and your phone number or e-mail address.

Payments by check or Money Order only, payable to NCC

Books may also be purchased on the NCC website,
www.cambridgeglass.org.

Major Credit Cards are only accepted for web purchases.



NCC welcomes the following new members

Kingdon K. Brady	CO
Jack Dotzman	MO
LaDonna S. Fountain	MO
Mary Jackson	OH
Donna W. Lick	MI
Edward Lick	MI
Heather Moore	IL
Hank Moran	MA
Janet Moran	MA
Marie Shaw	OH
Martin Shaw	OH
Donald Sobolewski	IL
Janice Spencer	NY
Dan Tyner	NC
Julia Zioto	NY

What's that etch?

Look at the 3rd column of the dealer ads on page 19, and you'll see an etch. There has been a different one each month. Can you identify the correct month that each etch appeared in 2016?

Candlelight	E519 (Cosmos border)
E726 (Poppy)	Ecclesiatical
Vichy	Woodlily
Ye Olde Ivy	

Do you email?



If we have your email address, it can be a faster method for NCC to communicate with our Friends of Cambridge. We have used email to remind members about convention registration, as well as to distribute the February issue of the *Crystal Ball*, the color issue highlighting the Annual Benefit Auction. If we know your birth-month, we'll send you a birthday card by email. We won't share your information without your permission. Send us an email at membership@cambridgeglass.org to make sure we have your email address.

Thanks!

HOUSTON GLASS CLUB

42ND ANNUAL

VINTAGE GLASS & ANTIQUE SHOW & SALE



FRIDAY, AUGUST 19TH 2016 2PM - 7PM
 SATURDAY, AUGUST 20TH 2016 10AM - 5PM
 SUNDAY, AUGUST 21ST 2016 11AM - 4PM

FORT BEND COUNTY FAIRGROUNDS
 US 59 TO HWY 36, SOUTH 1/2 MILE
 ROSENBERG, TEXAS



AMERICAN DEPRESSION ERA GLASS - ELEGANT GLASS - KITCHENWARE
 AMERICAN DINNERWARE - POTTERY - ANTIQUES - FURNITURE - LINENS
 CRYSTAL - CHINA - SILVER - PRIMITIVES - QUILTS - JEWELRY

Admission: \$10 Friday (Good all 3 Days)

\$6 Saturday/Sunday

AIR CONDITIONED
 FOOD & DRINKS ON SITE
 FREE PARKING



Information: WWW.HOUSTONGLASSCLUB.ORG
 Nancy Norman, Chairman 281-240-0382

Are you a Kroger shopper? Do you live in the greater Columbus area, or north and east of Columbus? If so, then consider enrolling your Kroger card in the Kroger Community Rewards program which runs May 2016 – April 2017. By enrolling your Kroger card in the program, every time you shop, Kroger will make a donation to NCC. This program is separate from the gas rewards and other programs.



Go to www.krogercommunityrewards.com • Click "sign-in" • Put in your email address and password used to enroll the card. • Put in the group number 91504 or search for National Cambridge Collectors. • Click Enroll. You are now enrolled for the May 1st 2016 to April 30th 2017 year of Kroger Community Rewards.

2016-2017 Kroger Community Rewards
 You requested Kroger to donate to
 NATIONAL CAMBRIDGE COLLECTORS

NCC Events

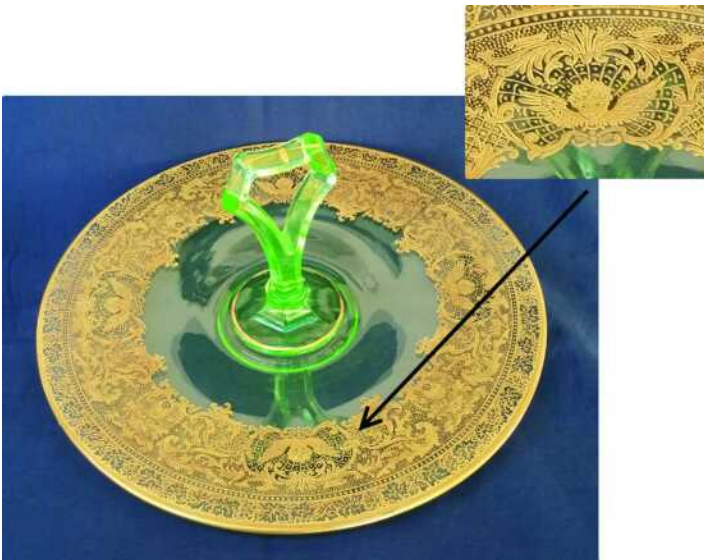
**2016 Fall Meeting
October 15, 2016**

**2017 NCC Auction
Saturday March 4, 2017**

New Member Benefit

Each NCC household is allowed one free 20-word classified ad in the Crystal Ball per calendar year as part of their membership. This can be a "For Sale" or "Wanted" type of classified ad. Submit your ad by email to editor@cambridgeglass.org

Recent Finds



#168 10" light emerald center handled tray,
Non-Cataloged etching No. 1014 (angel)

Glass Shows

August 6-7, 2016

Pensacola Looking Glass Show
Pensacola Interstate Fairgrounds
Pensacola, FL
<http://meyershow.com/pensacola.php>

August 12-13, 2016

Slidell Looking Glass Show
Northshore Harbor Center
Slidell, LA
<http://meyershow.com/slidell.php>

August 13-14, 2016

IDGC China, Glass & Pottery Show & Sale
McClellan Conference Center
Sacramento (McClellan) CA
<http://www.idgc.org/showcard.php>

August 19-21, 2016

Houston Glass 42nd Annual Vintage Glass & Antique Show
Fort Bend County Fairgrounds
Rosenberg, TX
<http://www.houstonglassclub.org/showinfo.html>

August 27-28, 2016

Summer Metroplex Looking Glass Show
Grapevine Convention Center
Grapevine, TX
<http://meyershow.com/metroplexaugust.php>

September 17-18, 2016

Depression Glass Club of Rochester Glass Show & Sale
Rochester Museum & Science Center
Rochester, NY
585-271-4552

September 24-25, 2016

Garden State Depression Glass Club Show and Sale
Lakeview School
Edison, NJ 08837
thelegantable@verizon.net

October 1-2 2016

Front Range Glass Show & Sale
The Range Events Complex - Larimer County Fairgrounds
Loveland, CO
<http://Fronrangelassshow.com>

October 15-16, 2016

Milwaukee's Vintage Glass Show Show
W.G. Banquet Center
Milwaukee, WI. 53227
amblackmore@yahoo.com

Wichita Glass Gazers Depression Era Glass Show & Sale
Cessna Activity Center
Wichita, KS
GJGUM@sbcglobal.net

DEALER DIRECTORY

Dealer Directory - \$24 for 12-months, size limited by box (see below). Includes listing on NCC website.


Advertising Rates:

1/8 page \$15 1/4 page \$20
1/2 page \$30 Full page \$50

Electronic submissions should be emailed to:

editor@cambridgeglass.org

Use Word. Mailed submissions and all payments should go to PO Box 416, Cambridge, OH 43725. Deadline is 10th of preceding month. Ads must be paid in advance. Show listings are FREE; send info to PO Box or e-mail address 60 days before event.



Connecting Buyers & Sellers!
Tell us what you are looking for and we help find it.
CAMBRIDGE GLASS.US
P. Snyder 740-601-6018
E-Mail and Find Your Glass!
psnyder@cambridgeglass.us
www.cambridgeglass.us
E-Blast
When you are searching for Cambridge glass, email your request and it is emailed to all members and dealers.
P. Snyder, 1500 Edgewood Dr., Circleville, Ohio 43113

PATTON HOUSE ANTIQUES
Specializing in Glass
Heisey • Cambridge • Fostoria • Duncan
Factory Antique Mall
Verona, VA off I-81. Exit 227
The Daniels, Box 547 Louisa, VA 23093
(540) 967-1181

Cheshire Cat Antiques
Specializing in elegant depression to mid-century era glass and vintage kitchen glass.
Pull up a Mouse! Shop 24 hrs a day at cheshirecatantiques.com
Francee Boches > 305-884-0335
fboches@cheshirecatantiques.com



Cherished Collectibles
Shopping 24 hours in our online store
Glassware, Figurines, Collectors' Plates
www.cherishedcollectibles.com
Elegant and Depression Era Glass

Heirloom Glass Antiques & Gifts
Large Selection Of Cambridge
13411 Columbia Hwy.
Lynnville, TN 38472
www.heirloomglass.net 931-446-5492
juanita@heirloomglass.net

Edward Sawicki
Memories Antiques
"Glass is our Passion"
Candlesticks and stemware our Specialty.
PO Box 153 646-522-1506
Dunnellen, NJ 08812 ejsawicki@optonline.net

CRYSTAL LADY
1817 Vinton St. Omaha, NE 68108
Bill, Joann and Marcie Hagerty
402-699-0422
Specializing in Elegant Glass & Collectibles
www.crystalladyantiques.com


Glen & Carolyn Robinson
White Rose Antiques
Specializing in Depression Era Glassware
2454 McFarland Road
York, SC 29745
803-684-5685
gandcrobinson@aol.com
whiteroseglassware.com

CRYSTALLINE COLORS
Cambridge • Fostoria • Elegant Glass
Penny Court Mall, Cambridge - 2 booths
Medina Antique Mall
Medina, OH (I-71, exit 218)
Lynne R. Franks 216-661-7382

GLASS FROM THE PAST
Maureen Gillis

www.glassfromthepast1.com
email: maureen@glassfromthepast1.com

Cambridge Nudes - Dave Small
HTTP://CambridgeNudes.com
3011 Cambridge Statuesque
Buy, Sell, Trade
davesmall@mac.com
281-376-3686

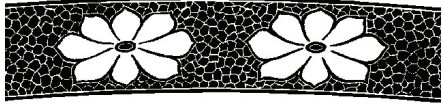


TWEAK COLLECTIBLES
Specializing in Elegant Glass
BUY & SELL
WANTED: CAMBRIDGE TURKEYS
417-742-3653
btummons@aol.com

Virtualattic At The Glass Chalet
Specializing in
Elegant Depression Era Glass
Sandra L. Bridwell-Walker
PO Box 726
Newcomerstown OH 43832-0726
740-492-5022 (H) 817-559-0328 (C)
virtualattic@sbcglobal.net theglasschalet@sbcglobal.net

Max Miller
Elegant American Glassware
www.maxmillerantiques.com
The Market Place
10910 Katy Freeway. 713-410-4780
Houston TX 77043 mmxglass@aol.com

Ohio Valley Antique Mall
7285 Dixie Highway (Route 4)
Fairfield, OH 45014
Cincinnati's Largest Multi-Dealer Antique Mall
Hours: DAILY 9:00 a.m. - 9:00 p.m.
513-874-7855
www.ohiovalleyantiquemall.com
cfaxon@ohiovalleyantiques.com



See page 17

ISAACS ANTIQUES
(740) 826-4015
☞ Located in ☜
Penny Court Mall 637 Wheeling Ave
Cambridge, OH
Relics Mall 616 Main St
Zanesville, OH

BAKER FAMILY MUSEUM
805 CUMBERLAND ST.
CALDWELL, OHIO 43724
740-732-6410
bakermuseumnellbaker@msn.com
Wed & Thurs 9-4; Fri - Sat 9-5

MARGARET LANE ANTIQUES
2 E. Main St. New Concord, OH 43762
Lynn Welker (740) 826-7414
Cambridge Glass Matching Service
Hours: Mon-Fri 10-12 AM, 1-5 PM
or by appointment

Our House Antiques
Linda and David Adams
Las Vegas, NV
1-800-357-7169
www.OurHouseAntiques.com
email: David@OurHouseAntiques.com




National Cambridge Collectors, Inc.
PO Box 416
Cambridge OH 43725
email: editor@cambridgeglass.org
website: www.cambridgeglass.org



Friends of Cambridge – Annual Fund

NCC exists through member giving using an Annual Fund system to raise operating funds and to ensure the preservation of Cambridge glass for future enthusiasts. The Annual Fund uses a common member "renewal" date and NCC sends out Annual Fund materials to everyone once a year. There are no monthly reminders or monthly renewal dates. The Annual Fund is NCC's primary means of support and all Annual Fund gift recognition levels are per household and include membership for all adults within the household. Additionally, each household will receive a subscription to the Crystal Ball newsletter, unlimited admissions to the museum, and rights to vote in elections for the Board of Directors. Multiple households at the same address are welcomed. NCC is a 501C(3) organization and Annual Fund gifts are allowed as a tax deduction under Section 170 of the Internal Revenue Code.

Thank You!

Levels of Membership

Patron	\$35
Benefactor - Century	\$100
Benefactor - Mardi Gras	\$200
Benefactor - Japonica	\$500
President's Circle	\$1,000

President's Circle includes Convention registration for two members in the household and one copy of any new NCC publications.

The National Museum of Cambridge Glass

*Open April thru October
only*

