



# Cambridge Crystal Ball

Published by the National Cambridge Collectors, Inc. as a resource which informs, invites and inspires people to encourage the continued preservation of the glass produced by the Cambridge Glass Company of Cambridge, Ohio for future generations.

Issue No. 466

March 2013

## It Really Matters!

By Cindy Arent

Since we closed the museum in late December and packed away the holiday decorations for next year, we have been very busy. The Cambridge/Guernsey County Visitors & Convention Bureau has offered several co-op promotional opportunities to area attractions. We decided to co-op with the VCB for a full page ad in the May issue of Ohio Magazine. Our museum photo file needed to be updated so we could send the VCB's marketing firm several fresh photos from which to choose.

On New Year's Eve day, Bryan and Jenna Conaway agreed to come to the museum for a photo shoot. Bryan is the nephew of NCC member, Sally Slattery. Many years ago Milton Conaway moved his family to Cambridge so he could work at the Cambridge Glass Company. His specialty was applying handles to pitchers and he was the only artisan at that time with this specific skill at the factory. As we took several photos around the museum of Bryan and Jenna, we kept reminding Bryan that his great-grandfather could have applied the handles on several pieces in the display cases. They are a wonderful couple and were very nice about being called to the museum on New Year's Eve.

Next on the agenda in early January was to Swiffer all the walls in the museum and then clean the woodwork. We've found that it is easier to do this type of cleaning before the glass in the display area is done. The museum mannequins were also vacuumed and the printer in the etching display even got a new shirt this year.



Standing in the AAA Great Vacations Expo booth are museum volunteers Cindy Arent, Lindy Thaxton, Sharon Miller, Donna Hill – Director of Cambridge Main Street and Karen Googins of the Cambridge Farmer's Market.



We are in the process of updating the museum photo file. This new photo shows Bryan and Jenna Conaway admiring the colorful figural case. Bryan is originally from Cambridge and recently returned to practice law at a local firm. His great grandfather, Milton Conaway, moved the Conaway family to Cambridge in the early 1900s to work at The Cambridge Glass Company.

We were asked to speak about Cambridge Glass at the Ohio Lions Club Convention at Salt Fork Lodge the morning of January 19<sup>th</sup>. Sharon Miller, Lindy Thaxton and Cindy Arent arrived at the lodge at 8 am with glass, props, the museum bannerstand and lots of handouts. Yes, we were even dressed as glassworkers for our presentation. People attending the program were very interested and we look forward to meeting many of them very soon at the museum. When we finished, all props were quickly packed and loaded into the car because the next stop that day was the AAA Great Vacations Expo in Columbus, Ohio. Each year the Cambridge/Guernsey County Visitors & Convention Bureau pays for the booth at this very large travel show. They then give local attractions the opportunity to work a shift during the three days the Expo is open. We have always worked Saturday afternoon and did so again this year. It was the

Continued on page 6



# PRESIDENT'S MESSAGE

## It's Auction Time!

As I write this message, the Annual Benefit Auction is exactly one month away. The high number of quality items consigned to this year's auction is making my personal selection of items on which to bid very difficult. Are you having the same problem? Individual photographs of each lot can be viewed on the NCC website. The Benefit Auction will begin 9:30 am on Saturday, March 2, with the Auction Preview beginning at 8:30 am. The March Quarterly Meeting will be held Friday, March 1, at 7:30 pm. I hope many of you are planning to attend. Please refer to the website and articles printed in the Crystal Ball for more auction details. Jack and Elaine Thompson, Lynn Welker, Larry Everett, David Rankin, Frank Wollenhaupt, and David Adams have been working for several months coordinating the necessary details required to execute the March Auction.

The March Auction is a "benefit" auction. Our auction "benefits" NCC, the glass consignors, and collectors of Cambridge glass. NCC benefits from the auction by receiving a 20% commission from the sale price of all consigned items. Prior to the inception of the Annual Fund, the money raised from the auction was the primary source of revenue for museum operations. The glass consignors benefit from having many of the most avid and enthusiastic collectors of Cambridge glass bid in the auction every year. In addition to the nearly 200 collectors of Cambridge glass who attend the auction, NCC offers absentee bidding to all interested persons. This creates an optimal selling environment for the glass consignors. The majority of items sold at the NCC Benefit Auction sell at or near current market value. The successful cooperation between the consignors and NCC creates an exciting win-win situation for both parties. For collectors of Cambridge glass, the March Auction offers a comfortable and convenient setting in which to purchase many high-quality pieces of Cambridge glass. If you have never participated in the March Benefit Auction as a bidder or consignor, I strongly encourage you to consider its benefits.

Each year, the fourth weekend of January begins a series of three glass shows in Florida. The weekend of January 26-27, the Sanlando Depression Glass Show & Sale was held in Sanford, FL. After attending this show two years ago with NCC Program Director, Greg Vass, I was excited about our possible return this year. Fortunately, both of us were able to adjust our work schedules to make this trip possible. Glass collectors living in the southeast have the privilege of attending three quality glass shows in the state of Florida during January and February. Last fall, I began confirming the dates and times of the Sanlando Depression Glass Show with NCC members Linda Gilbert and Fleur de Lys Healey. Fleur de Lys is the show's Special Guest.

Fleur de Lys hosts an information table where glass show attendees can learn about NCC and Cambridge glass. Thank you, Fleur de Lys, for the many years you have supported NCC at the Florida glass shows by soliciting new members, recruiting new glass dealers for the NCC glass show, and selling NCC's printed educational materials.

Unlike two years ago when snow caused our flight's to be delayed multiple times, the weather cooperated this year and our flight's arrived on time. The glass show preview on Friday evening is an unofficial event Greg and I established during our first visit to the Sanlando Depression Glass Show. The Sanford Civic Center has large windows on two sides of the building which offer multiple viewing locations. Fortunately for us, as part of the glass show's advertising, the Civic Center leaves the lights on until around 10:00 pm each evening during the show. After dinner on Friday, we started the 20 minute drive to the Civic Center to begin the unofficial preview. Much to our surprise, NCC members David Lake and Jack and Elaine Thompson arrived a few minutes earlier and were already circling the Civic Center searching for items they hoped to purchase on Saturday.

The Sanlando Depression Glass Show consisted of nearly 30 high-quality dealers specializing in Depression glass, elegant glass, kitchen ware, and pottery. At 9:00 am Saturday morning, Jack and Elaine led a small group of early shoppers through the door at the opening of the show. Within an hour, hundreds of shoppers were moving from booth to booth searching for items to add to their collections. The Sanlando Depression Glass Show is consistently one of the best shows for quality and variety. Next January, if you desire warm temperatures and wish to attend a quality glass show, you should consider a vacation trip to Sanford, FL.

The 2013 Annual Fund materials and voting ballots for the BOD have been mailed. Thank you, to Helen Klemko and Ken and Jane Filippini for orchestrating the Annual Fund mailing. If you have not received your Annual Fund mailing, please contact me at [westerville@hotmail.com](mailto:westerville@hotmail.com). Thank you to those members who have already made their Annual Fund commitments for 2013. Your continued generous support is greatly appreciated.

David Ray  
[westervillesh@hotmail.com](mailto:westervillesh@hotmail.com)

# ***“Happy 40<sup>th</sup> Birthday NCC”***

**National Cambridge Collectors, Inc.  
40<sup>th</sup> Annual Convention  
Thursday, June 20<sup>st</sup> through Sunday, June 23<sup>th</sup>, 2013**

## ***Advance Registration Form***

**Please complete the Registration Form and return it no later than June 1, 2013.** (Registrations post-marked after June 1, 2013 will incur a late fee. See below for cancellation policy.) Send your check payable to National Cambridge Collectors, Inc. along with this completed registration form to:

**National Cambridge Collectors, Inc.  
Convention Registration  
P. O. Box 416  
Cambridge, Ohio 43725-0416**

Each person registering for the convention must pay the \$25.00 registration fee regardless of which events will be attended. The registration fee includes admission to the NCC Glass Show and Sale, all other scheduled events and a convention packet. Please register for all events you plan to attend, including those offered at no charge. For children under ten years of age, there is no registration fee; however, they will not receive a convention packet and must pay for any meals they attend.

**Show dealers and President Circle members – there will be no registration fee; however, there will be a limit of two free registrations per Show Dealer.**

Please list each person registering separately. Names should be given as you wish them to appear on your name badge. Please provide your NCC, Inc. membership number on the registration form. If registering for more than four persons, please list additional members on a separate sheet.

If you would like to receive an email confirmation receipt of this registration form, please list your email address and/or a telephone contact number. **This is the only way we can provide confirmation of your registration.**

### **Cancellation Policy**

Written Cancellation up to 30 days before first convention event – full refund.

Written Cancellation up to 15 day before first convention event – full refund less \$10 handling fee.

Written Cancellation up to 5 days before first convention event – refund meals only.

Written Cancellation less than 5 days before first convention event – no refund.

**Like Raffles?  
Wait Til You See What We Have Planned. Coming 2014.**

*National Cambridge Collectors, Inc.  
Advance Registration Form  
June 1, 2013 - Registration Deadline*

<i>Name of Conventioneers</i> <small>(Please print legibly as you wish it to appear on your Name Badge)</small>	<i>Membership Number</i>	<i>First Convention</i>	
		Yes	No
		Yes	No
		Yes	No

*Address:* \_\_\_\_\_

*Email address* \_\_\_\_\_ *Phone Number (\_\_\_\_)* \_\_\_\_\_  
(Registration confirmation will be sent via email or by telephone call when the above information is provided)

<i>ACTIVITY</i>	<i>FEE</i>	<i>NUMBER ATTENDING</i>	<i>TOTAL</i>
<i>Registration (postmarked by June 1)</i>	\$25.00		
<i>Late Registration (postmarked after June 1)</i>	\$30.00		
<i>Dealer or President's Circle</i>	NA		
<b><i>Cocktail Hour and Picnic at Pritchard Laughlin Grounds*</i></b> <small><i>Picnic Fare including Fried Chicken, Vegetarian Lasagna, Cole Slaw, Baked Beans, Lemonade, Iced Tea, and Water.</i></small>	\$13.00		
<b><i>Cocktail Reception and Buffet</i></b> <small><i>(Menu not finalized).</i></small>	\$17.00		
<b><i>Cocktail Reception and Banquet at Pritchard Laughlin Galleria*</i></b> <small><i>(Menu not finalized)</i></small>	\$30.00		
<i>Optional Donation to NCC for</i> _____ <small><i>(i.e. museum acquisition, endowment fund, etc.)</i></small>		<i>Total</i>	

***For Information and Planning Purposes Only. Please indicate how many persons will attend the following events:***

***First Time Orientation and Coffee with Cambridge (Please circle number attending) 0 1 2 3 4***

***Major Field(s) of Collecting*** \_\_\_\_\_  
*(This information will appear in the Convention Packet.)*

\* Meals include iced tea, coffee, taxes and gratuity. Cocktails are available for an additional charge. Please contact Diane Gary at [dhgary@msn.com](mailto:dhgary@msn.com) if special meals are required due to dietary restrictions.



# *“Happy 40<sup>th</sup> Birthday NCC”*

## **PROPOSED 2013 CONVENTION SCHEDULE**

### **THURSDAY, JUNE 20**

<b>9:00 am – 11:00 am</b>	NCC Board of Directors Meeting	<b>National Museum of Cambridge Glass</b>
<b>3:00 pm – 5:00 pm</b>	Glass Show Dealers Unload into Exhibit Hall -- No glass unpacked	<b>Pritchard Laughlin Exhibit Hall</b>
<b>6:00 pm – 7:30 pm</b>	Opening Picnic, Meet the Board	<b>Pritchard Laughlin Galleria</b>
<b>7:30 pm – 8:30 pm</b>	Refired Glass: Rubina, Sunset, & Carmen	<b>Pritchard Laughlin Conference Room</b>

### **FRIDAY, JUNE 21**

<b>6:30 am – 4:30 pm</b>	Dealer set-up for the Glass Show	<b>Pritchard Laughlin Exhibit Hall</b>
<b>8:00 am – 9:00 am</b>	Preparation for Glass Dash – volunteers welcome	<b>St. Benedict’s Gymnasium</b>
<b>10:00 am – 11:00 am</b>	First Timers Meeting	<b>Pritchard Laughlin Civic Center</b>
<b>1:00 pm – 2:00 pm</b>	Program - Carmen	<b>Pritchard Laughlin Conference Room</b>
<b>3:00 pm – 4:00 pm</b>	Program – Candlelight	<b>Pritchard Laughlin Civic Center</b>
<b>4:30 pm – 6:30 pm</b>	Glass Show	<b>Pritchard Laughlin Exhibit Hall</b>
<b>6:30 pm – 7:15 pm</b>	Cocktail Reception	<b>Pritchard Laughlin Galleria</b>
<b>7:15 pm – 8:30 pm</b>	Dinner	<b>Pritchard Laughlin Galleria</b>
<b>8:30 pm – 9:00 pm</b>	Capital Campaign & Awards	<b>Pritchard Laughlin Civic Center</b>
<b>8:30 pm – 9:00 pm</b>	Annual Meeting	<b>Pritchard Laughlin Galleria</b>
<b>9:00 pm – 9:30 pm</b>	Bring & Brag and Glass Identification	<b>Pritchard Laughlin Conference Room</b>

### **SATURDAY, JUNE 22**

<b>7:00 am – 8:30 am</b>	Glass Dash – Early Birds	<b>St. Benedict’s Gymnasium</b>
<b>8:30 am – 11:00 am</b>	Glass Dash – Regular Admission	<b>St. Benedict’s Gymnasium</b>
<b>11:00 am – 5:00 pm</b>	Glass Show	<b>Pritchard Laughlin Exhibit Hall</b>
<b>1:00 pm – 3:00 pm</b>	Small Group Discussions	<b>Pritchard Laughlin Conference Room</b>
	1:00 pm – 1:45 pm Rose Point & Flower Frogs	
	2:00 pm – 2:45 pm Caprice and Swans	
<b>5:30 pm – 6:30 pm</b>	Cocktail Reception	<b>Pritchard Laughlin Galleria</b>
<b>6:30 pm – 7:30 pm</b>	Banquet	<b>Pritchard Laughlin Galleria</b>
<b>7:30 pm – 9:00 pm</b>	Program “Birthday Bash”	<b>Pritchard Laughlin Galleria</b>

### **SUNDAY, JUNE 23**

<b>11:00 pm – 4:00 pm</b>	Glass Show	<b>Pritchard Laughlin Exhibit Hall</b>
<b>1:00 pm</b>	Cambridge Glass Worker Reunion	<b>Pritchard Laughlin Galleria</b>

## It Really Matters! - continued from front page

busiest yet! We ask people if they have ever been to Cambridge/Guernsey County and offer them a visitor's guide. We answer any questions and always ask if they have ever been to The National Museum of Cambridge Glass. This year several people had been to the museum! One young woman looked at the interior museum photo on the new VCB booth display and said, "I remember seeing that when I was there, it was beautiful!" That really made our day and gave us the feeling that speaking at events and working the travel shows is definitely paying off!

The following Saturday, NCC members arrived at the museum to clean glass and by the end of the day we had cleaned sixteen cases. Volunteers during the day were: Frank, Vicki and Dawson Wollenhaupt, Linda Roberts, Rich Bennett, Betty Sivard, Sandi Rohrbough, Gary Wiseman, Larry and Susan Everett, Sharon Miller, Al Tuttle and Cindy Arent. We even had visitors during the day. However, we couldn't let them inside the display area because of the glass cleaning going on, but wanted to give them a peak of what they will see when the museum reopens for the season. They bought a Rose Point book because their brother in California has started collecting Cambridge Glass!

Monday, January 28<sup>th</sup> was the Team Tourism meeting at Theo's downtown and was attended by Sharon Miller, Sandi Rohrbough, Gary Wiseman and Cindy Arent. Debbie Robinson, Executive Director of the Cambridge/Guernsey County VCB, introduced Dixie Wyler. Dixie will be developing new tour packages for motor coach groups, day tours and promoting tourism for the VCB. She has been to the museum as a guide for motor coach groups and always has a smile. We look forward to working with Dixie.

Saturday, February 2<sup>nd</sup> was also busy in the museum and around Cambridge. Museum volunteer Gary Wiseman spoke about Cambridge Glass, NCC and the museum at the men's breakfast meeting held at the Unity Presbyterian Church in downtown Cambridge. He was assisted by Sandi Rohrbough. Even though it was a cold and snowy day, Gary and Sandi had a large audience

that asked many questions about Cambridge Glass.

Also that day, a lot of glass cleaning was happening at the museum. NCC members braving the winter weather to volunteer were: David Ray, Jack and Elaine Thompson, Larry and Susan Everett, Sally Slattery, Rich Bennett, Betty Sivard and Cindy Arent. Fifteen cases were cleaned during the day. Volunteers love to place a yellow post-it note on each case when it is finished.



This group of museum volunteers cleaned 15 showcases at the February 2<sup>nd</sup> work session. A lot of silver was also polished during the day. Members helping were front row (L-R) Rich Bennett, Elaine Thompson, Larry Everett, Susan Everett and David Ray. Gathered in the back are Sally Slattery, Jack Thompson and Betty Sivard.

We hope to have all the showcases cleaned by auction weekend, so be sure to visit the museum either before or after the auction.

**The museum will be open auction weekend on Friday, March 1 from noon to 4 p.m. and Saturday, March 2 from noon to 4 p.m. We look forward to seeing you then!**



Following his presentation, Gary Wiseman shares a light-hearted moment with Ernest Gardner of Unity Presbyterian. Gary collects Mount Vernon and is holding pieces from his collection.



NCC member Larry Hughes enjoyed looking over the Cambridge Glass and information used for the program.





At the conclusion of our program about Cambridge Glass during the State Lions Club Convention at Salt Fork Lodge, members of the audience were invited to dress as glassworkers and demonstrate the process of making fine handmade glassware. They were a very interested group!



Have etching plates, will travel and travel they did to the AAA Expo for three days. These children were fascinated with their rubbings done on a Hunt Scene etching plate. Cindy Arent is holding the paper so the children could complete their creations. The paper had the museum name, and contact info.



This happy group enjoyed the Sanlando Depression Glass Show. L-R: David Lake, Linda Gilbert, Jack & Elaine Thompson, David Ray and Greg Vass. Seated are Millie Downey and Fleur de Lys Healy

**How Wonderful would it be to know we've Endowed the Museum for Future Generations? What a Great Legacy that Would Be. Coming May 2013.**





by Larry Everett

This report is provided to keep members up with what's happening on the world's largest Internet Auction site. It is not meant as an educational tool, nor as a pricing guide, and we cannot guarantee the accuracy of listings herein.

Greetings from eBay land! Thanks to my many friends that send news to me at: [heartlamps@sbcglobal.net](mailto:heartlamps@sbcglobal.net).

Rose Point:

A gorgeous rarely seen 3400/119 - 12 oz. ball shaped decanter ended at \$379.95 after spirited bidding. A single (as in one, not a pair) 3400/647 - 6" 2-lite candlestick lit up the night as it ended at \$341.99. Oh, by the way, it was Ebony and Gold Encrusted.

Statuesque:

One seller had three 3011/9 - 3 oz. cocktails for sale (all three with Crown Tuscan stem and foot). The first to sell sported a Royal Blue bowl and sold for \$643.99. The second had an Amber bowl and this beauty made \$691.97. The last stem had the ever popular, but very rare, Carmen bowl which caused a tsunami of bidding and ended at \$2,550. I wonder if Rich Bennett will see one of these GE Rose Point during one of his "adventures"?

Other Etchings:

A beautiful pair of Forest Green No. 647 - 5 1/2" 2-lite candlesticks with decagon feet, D/1036 Apple Blossom II Gold Decorate Overlay, (gold rim wear) ended at \$212. A Heatherbloom 3035 water goblet E Rosalie sold for \$78.55 and also in Heatherbloom a #3126 water goblet E Portia sold for \$76.55. The next three items are all Pink and all etched Cleo: A 3077/10 - 63 oz. Jug and Cover sold for \$272, A very rare, No. 184 - 12" Vase flew to \$422.50 and also rare a 1023 - 9 1/2" Vase made \$202.50. Also in Pink, a No. 157 - 7 oz. Footed Marmalade and Cover E 701 sold for \$56. A pair of Crystal Caprice 72 - 6" 2-lite candlesticks (Version 1), GE Daffodil were quickly picked up for \$115 on a "Buy it Now".

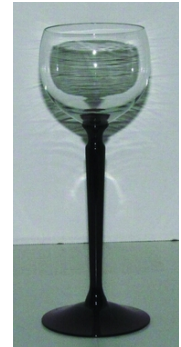
Miscellaneous:

A lovely pair of crystal Caprice 69 - 7 1/2" 2-lite Candelabrum, #5 Prisms (Version 3) ended at \$119.99. An unusual Flashed Primrose No. 102 - 6" Bonbon and Cover with an Art Deco enameled decoration brought \$69.99. A hard to find Night Blue No. 143 - 84 oz. Jug and Cover ended at \$49.99. A Crystal 1222 Turkey with hand painted décor strutted its way to \$750. A 3104 hock with crystal bowl and Amethyst stem and foot rose above the crowd to finish at \$267. A Windsor Blue Seashell 73 - 4" Candlestick ended at \$78.78. A cute 1040 - 3" individual Swan Nut or Mint (Style 2) swam to \$95. And the last item this month was a stunning Royal Blue #1402/87 covered Cookie or Pretzel Jar (no metal Handle) that commanded \$255.

Good Luck at the NCC Auction!



3400/647 - 6" 2-lite candlestick Ebony and Gold Encrusted Rose Point



3104 hock with crystal bowl and Amethyst stem and foot



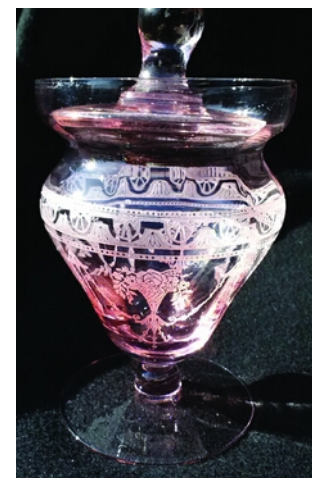
1222 Turkey with hand painted decor



Royal Blue #1402/87 covered Cookie or Pretzel Jar



Flashed Primrose No. 102 - 6" Bonbon and Cover



57 - 7 oz. Footed Marmalade and Cover E 701



Crystal Caprice 69 - 7 1/2" 2-lite Candelabrum, #5 Prisms (Version 3)



**Auction Manager's Note:** The PLC snack bar will not be open. NCC will have coffee, water and snacks available for sale at the rear of the auction room beginning at 8:30 AM.



**Back by popular demand** are Theo's scrumptious boxed lunches, delivered right to PLC in time for the lunch break. So if you don't want to hassle running out to get something and/or want a nice healthy alternative to fast food, we've got it for you. Tax and gratuity are all included in the purchase price.

**Ordering:** A Theo's representative will be in the PLC lobby from 8:30 AM to 9:30 AM on Saturday, day of the auction, to take everyone's orders. You must have cash or check and pay at time of order. They will not be able to take credit cards. Just fill out the handy order form, one per order, and give it to the Theo's representative with your payment. It's that easy!

## **Prepared Boxed Meals:**

### **Sandwiches: \$9.00**

*All sandwich boxed meals include choice of broccoli raisin salad or pasta salad, chips, cookie and one bottled water or can of soda.*

\*Mustard, Mayo & Horseradish sauce will be available.

Served on the side.

**Roast Beef & Cheddar** - on Cracked Black Pepper Bread with lettuce, tomato

**Chicken Salad Croissant** - with lettuce and tomato

**Ham & Swiss on Wheat** - with lettuce, tomato

**Turkey, Bacon, & Mozzarella** - on Whole Wheat with lettuce, tomato

### **Salads: \$9.00**

*All salad boxed meals come with dinner roll or homemade French bread, cookie and one bottled water or can of soda.*

**Chicken Caesar Salad** – mixed greens w/Caesar dressing, parmesan cheese, kalamata olives, pepperoncinis, and grilled breast of marinated chicken.

**Greek Salad** – *our signature salad* – mixed greens w/grilled chicken, onions, tomatoes, cucumbers, marinated mushrooms, feta, kalamata olives, pepperoncinis, croutons and our Greek vinaigrette.

**Smoked Turkey & Mixed Nut Salad** - mixed greens with smoked turkey, mixed nuts, raisins, shredded mozzarella, tomatoes, cucumbers, onions w/choice of dressing.

### **Additions:**

**Cup of Soup: \$2.25**

**Side Salad w/choice of dressing: \$2.25**

**Additional Beverage: \$1.00**

**[www.theosrestaurant.us](http://www.theosrestaurant.us)**

# BOXED MEAL ORDER FORM

We will be taking orders in the AM of the auction. Cash or check.

Name: \_\_\_\_\_

Cell Phone: \_\_\_\_\_

One order per form.

---

## Sandwiches \$9.00 (delivery included)

*All sandwich boxed meals include choice of pasta salad or broccoli raisin salad, chips, cookie, and one bottled water or can of soda.*

	Select One		Select One
Roast Beef & Cheddar	<input type="text"/>	Pasta Salad	<input type="text"/>
Chicken Salad Croissant	<input type="text"/>	Broccoli Raisin	<input type="text"/>
Ham & Swiss on Wheat	<input type="text"/>		
Turkey, Bacon, Mozzarella	<input type="text"/>		

---

## Salads \$9.00 (delivery included)

*All salad boxed meals come with dinner roll or homemade French Bread, cookie, and one bottled water or can of soda*

	Select One
Chicken Caesar	<input type="text"/>
Greek Salad	<input type="text"/>
Smoked Turkey & Mixed Nut Salad	<input type="text"/>

---

<b>Additions:</b>	Soup	Vegetable	<input type="text"/>
	\$2.25	Cream of Broccoli	<input type="text"/>

	Please select type of salad dressing			
<b>Side Salad with Dressing \$2.25</b>	Ranch	<input type="text"/>	Italian	<input type="text"/>
	Fat-Free Ranch	<input type="text"/>	French	<input type="text"/>

---

**Beverages:** *Please select type of beverage. An additional charge of \$1.00 will be assessed for each additional beverage ordered beyond that included in the boxed meal.*

Pepsi	<input type="text"/>	Bottled Water	<input type="text"/>
Diet Pepsi	<input type="text"/>	Sierra Mist	<input type="text"/>



## CHAPTER 8 “Arthur’s Special Creation”

*The continuing story that you are about to read is a fictional novel created for the enjoyment of our Friends. Of course it is always possible that some of the items described may surface – never say never.*

(At the end of Chapter 7, Rich met the master of all cutters: Mr. Herschel “Hand Cut” Hancock.)

Mrs. Burt stated, “We must go back to the showroom later to see more of these beautiful pieces.” As we walked around, we came to one of the many lehrs with dozens of tables covered with glassware. The selectors were removing peach blo Decagon cups and saucers. Another Lehr had peach blo oval dresser compacts and they all had light emerald rose knob handles.

As we walked back to the factory, we felt the intense heat and saw workers busy as bees. The first four shops were making pomona green pieces. “Mr. Bennett, this is a relatively new color, and we have high expectations for it. The first shop is making refractory bowls while another is making the tombstone bookends.” The third and fourth shops had real surprises. One was making small Buddhas. This was definitely one for the books. I knew some opaques were made, but I had never heard of this in pomona green. The fourth shop had another shocker. Five-inch flat top turtle flower blocks. Fantastic.

Next, we saw a shop making bluebell 13-inch swans. Seeing was believing. Who would have ever thought? These are incredible. All I can say is, “Blue is beautiful.” Helen told me to look over at another shop to see something that goes with this particular swan. As I watched the man open the mold, out came a feathered swan lid for this 13-inch swan. Oh, my God. This had to be the swan of swans. “I never knew they made a lid for the 13-inch; I only thought it was the 8 ½ inch size, which I have at home in light emerald.”

“Mr. Bennett, these swans are actually going to become electric lamps. The base and lid will be drilled and fitted with gold- or silver-plated attachments and require a nice parchment shade. And if I may say so, Sir, are very beautiful. I must tell you that we do have these on display in our showroom.” Further ahead was another furnace with 14 pots, and all making carmen. Helen said, “The company received a huge order for this beautiful red glass and each shop will be making something different.” The first two shops we saw the square base and Stratford base Dolphin candlesticks, while another shop is making the 13 ½ inch Mt. Vernon keyhole candelabrum. A real unusual piece was a 5-inch carmen oval flower block that fits the 8 ½ inch swans. “The 8 ½ inch carmen swans have already been made, and to complete the order, we need 400 of these. “ I immediately told Helen, “I have one of these blocks in crystal, but never knew they made them in carmen, although this one has a candle cup in the center of the block and mine doesn’t.”

“We can make you or anyone any item in any color that you choose. If you don’t see it, Sir, please ask. Our factory is here to please you.”

“I really like that attitude, Mrs. Burt, because before I leave this factory, you will have my order.” As we continued our walk around

the furnaces, more items were coming out of the molds. Next, we saw the four-piece desk set all in carmen. I quickly thought back to the 40-plus years I’d collected and how many carmen desks set I’d seen, and the quick answer would be zero.

“Actually, Mr. Bennett, the buyer requested that each piece be etched with certain monograms, with gold encrustation.”

We noticed Mr. Mosser talking with one of the workers. It seemed they were having a little trouble with one of the molds. He noticed us and walked over to say hello again, and explained the importance of glass-house managers and factory foremen. He stated, “Most of our pressers are very experienced, but on this smaller item, Mr. Danford was having a little trouble by cutting off too much glass from the gatherer. He’s used to working on larger items and he’s filling in for someone who’s sick today. He will be fine after they make a few pieces. He just needs to get used to the smaller mold.”

“Orie, I would like to give you the honor of showing Mr. Bennett a very special piece the men are making on the other side of the furnace.”

“Helen, I know the piece you’re referring to. Mr. Bennett, of these 14 pots, there’s one particular shop that’s making a very special piece of glassware and I’m extremely happy you’re here to witness it being made for the very first time. Mr. Bennett designed it himself and it’s to be given to his daughter, Marjorie. It’s a 10-inch-high statue of Marjorie at the age of 10 years young. And as you can probably figure out, carmen is Marjorie’s favorite color. Mr. Bennett wanted to be here, but had to go to New York on business and will be here tomorrow.”

As we walked to the other side of the furnace, we saw several men motioning us to come over. “They’re about to pull out the statue.” I quickly spoke up and told Helen and Mr. Mosser, “You don’t know how much this means to me to be part of this moment.”

“I’m really happy you’re here, Mr. Bennett. Martha is with Arthur and Marjorie has not been told. It’s a huge secret. Everyone should be here tomorrow to see another wonderful piece of Cambridge Glass.”

As the worker opened the mold, he set it on the press. It was absolutely beautiful with incredible detail. It was on a round base similar to a Draped Lady, but without holes. Mr. Mosser points out, “It will be sent to the etching department and etched Marjorie around the base, then our decorating department will apply the gold encrustation with an unveiling Tuesday morning. We’re actually making five statues today in case of any breakage. Whether any of these will be made at a later date will be up to the Bennett family.”

“Well, Mr. Mosser, this is definitely a moment in my life I will never forget, and I thank you for letting me be part of it.”

“Tomorrow should be an even bigger day at the presentation. It’s going to be held in our offices and several of our salesmen are coming in to be part of this.”

Helen states that it’s almost lunchtime and some of the workers will be going to the cafeteria soon and asks if I’m interested.

## “Arthur’s Special Creation” - continued

“Absolutely, Helen. Show me the way.” Along the way she said, “The cafeteria is out from the factory in a separate brick building on the west side of the property. We shouldn’t have any trouble finding a seat. It can seat 150 people.”

As we walked in, I noticed wooden tables and chairs and they actually were using Cambridge Glass salt and pepper shakers and cream and sugars.

As we got in line, I saw a menu board with prices. I guessed this was what was known as the “Good Ol’ Days.” The prices were unbelievable. Five cents for soup, 15 cents for sandwiches or salad, even Coca-Cola was only a nickel. What a deal! Pie was the dessert and was 10 cents per slice. After finding a table, I suddenly realized there wasn’t a brilliant light from walking out of the factory.

“I don’t know if you realize this, Mr. Bennett. We make 50 times more blown glass than pressed glass.”

“Yes, Ma’am. I believe I read that somewhere.”

After eating lunch, we went back in the factory to see some blow shops. They were everywhere, just like the pictures I’ve seen in books. We could see blowers standing on the wood-and-steel dummies blowing glass down into the molds. This was truly an art to watch molten glass being blown. The first 10 or 15 shops were all making different bowls for stemware. I saw one shop making some colored glass, which was light emerald. The piece was a 12-inch 402 Trumpet vase with optic. Now I know why the gatherers’

and blowers’ arms are so huge: by lifting so much glass out of the pots and molds for several hours a day.

Four shops were making fish aquariums in crystal, peach blue, willow blue, and gold krystal. She said, “The men will be quite busy, for the order calls for 400 of each.”

I told her, “I wouldn’t like to be the men or women who had to pack these pieces.”

“We have the utmost confidence in our packing and shipping departments headed up by Mr. Fred Rickey and A. J. Bauer. We like to think that things there are run ship-shape, if you know what I mean.”

I told her, “I’ve never seen so many glass blowers in one factory.”

“And, Mr. Bennett, you probably never will.”

This part of the factory was 240 feet by 95 feet by 55 feet. And the building had a total of 21 lehrs. There seemed to be a steady flow of carry-in boys taking glass over to the lehrs. Once again, we walked over to these steel monsters to view the glass within. As a man opened the lehr door, the heat came streaming out and my eyes became very watered.

As I turned around, I saw many flashes of light, as happened to me earlier. I heard a voice talking to me in the light, but I was still unable to focus. I felt a hand reach out and touch mine. I couldn’t believe it. It was... (to be continued...)

The 78<sup>th</sup> Show Sponsored by Del-Mar-Va Depression Glass Club

### 2013 Show and Sale

Early American, Pattern, Elegant, Art Deco, & Depression-Era  
Glassware, China, Kitchenware, Pottery, Books & Linens

**Special Display: “Vintage American Lamps”**

Saturday, April 27, 2013 10am-5pm  
Sunday, April 28, 2013 10am-3pm

**Duval High School**  
**Greenbelt Road at Good Luck Road, Lanham, MD**

Capital Beltway I-95 (Outer Loop) Exit 22A Route 193E Greenbelt/NASA  
Capital Beltway I-95 (Inner Loop) Exit 23 Kenilworth Ave. – Right Lane,  
To Route 193 East – Greenbelt/NASA (about 2½ miles to Duval H.S.)

\*\*\*Glass Identification - Door Prizes – Snacks\*\*\*

INFO: 301-565-2361 / 410-263-4192; Email: [ybrian@verizon.net](mailto:ybrian@verizon.net); Admission: \$4.00

**How Important is our Museum to the City of Cambridge?  
Let’s Build a Plan for the Future – TOGETHER.**



## The Columbus Wildflowers NCC Study Group Meeting Minutes

On Saturday, December 8th, the Wildflowers held our annual Christmas Party at the home of Linda and Bryan Roberts at 2 pm. We did something different this year, and rather than a potluck, had "Cookies and Cordials with Cambridge." Everyone brought cookies to eat, a Cambridge Cordial to drink from and various cordials to sip and try. Bill Lyle even had a vintage bottle with a pear grown inside it that he had brought home from Europe. So the first part of our gathering was to enjoy each other's company, actually using the following Cordials: a #3121 stem cut Achilles; a #3700 stem cut Cambridge Rose; a Marjorie etched Cordial; a #301 short stem crystal Caprice Cordial with optic top; a #3111 stem Carmen Cordial; a #3102 stem Carmen Cordial; and a Cambridge Square Cordial.

Next, we had a great Show and Tell with a Nude Stem Shell Comport with nude and shell both in Mandarin Gold; two graduated cylinders with the triangle C in white enamel; a Pristine Ice Bucket etched Vichy; a Cordial Decanter with an amber flashing and grape etch; a large Tally Ho stem in Carmen; a Carmen Cordial Decanter; a Carmen #3500 Low Wine with gold silkscreen floral; a pair of #70 Caprice Candlesticks with bobeches; a Cambridge Square Bowl with an experimental Guegold Greek key style etching; an Ebony Vase with gold encrusted Dancing Lady; a late Moderne plate in Smoke; a Crown Tuscan lidded Urn with gold encrusted Diane and a much larger than usual center flower; and a small Crystal Basket with ruffle edge and cutting.

We had a short meeting and took a moment to remember our beloved Marianna Doyle, a very enthusiastic and valued member of our group.

Then, we got into our usually rowdy "Robber Gift Exchange." For some reason, this year was a little sedate, I guess we were more "Cordial" than usual, and for the first time ever, no one stole anyone else's gift. We opened wonderful Cambridge items that we had fun finding throughout the year just for this occasion, which included: a Crown Tuscan Ivy Ball; a Pink Bowl with flipped edge and unusual cutting; a Crystal #3900 covered Candy with cutting; a Green Bowl etched Rosalie; and a Crystal divided Mayo etched Roselyn.

As always, we all had a wonderful time of friendship, fun and glass, and our next meeting will be in April at the home of Barbara Wyrick. Our meeting adjourned at 5:30 pm.

The Wildflowers wish everyone a Very Happy New Year, and new members in the Columbus, Ohio area are always welcome and can contact either Linda Roberts at [lrobert2@columbus.rr.com](mailto:lrobert2@columbus.rr.com) or Barbara Wyrick at [bwyr@ee.net](mailto:bwyr@ee.net)

--respectfully submitted by Barbara Wyrick, Secretary

## The Elegant Study Glass Group NCC Study Group Meeting Minutes

The Elegant Study Glass Group met at the home of Bill and Yvonne Dufft in Shillington, Pa on August 18<sup>th</sup>, 2012. In attendance: President Millie Loucks, Roger Loucks, Bill and Yvonne Dufft, Walter Lee, Alex Wolk, Janice Wolk, Loretta Weeks, Myrle Scott, Ken and Jane Filippini, Don and Louise Swartz, Rick and Cindy Jones and Irene Jagodnik.

The day was started with appetizers, chatting and catching up on glass. Millie, our President opened the meeting and old and new business was discussed including the Endowment Fund. Next meeting will be presented by Wolk's on October 20<sup>th</sup>, 2012. Program was given by Ken as he talked about the different periods of Crackle glass. 1<sup>st</sup> period late 1920 to early 1930, Post 1955 (reopened period) and 2<sup>nd</sup> period 1956 to 1958. Crackle was made by taking blown pieces while hot and dunked in cold water, then re-fired. L E Smith and Imperial made "relief crackle" not cracked through.

Bring and Brag is always most impressive as was Bill and Yvonne's home with all their spectacular glass. Crystal compact with pale blue enameling & gold decorations. #49 belled SS Crown Tuscan Vase, #1296 Gold Krystal Apple Blossom, Wedgewood Jelly with under plate & lid, Diane Crystal Palace Vase, Gold decorated Carmen Rose Point Salad Plate, Jefferson 10 oz. goblet with Danube cutting, Lt Emerald Heirloom covered candy with Willow Gold etch, Pr. Carmen #1338 Tri-level Candlesticks with Mt. Vernon decoration. We proceeded to a most delicious lunch and more glass chatter. A fun time as always. Thank you Bill and Yvonne. Respectfully yours, Gail Duchamp, Secretary

The Elegant Glass Study Group had their annual Christmas Party (Meeting) at the home of Loretta Weeks in Pennsylvania. In attendance were members, President Millie Loucks, Roger Loucks, Alex Wolk, Myrle Scott, Bob Arnold, Loretta Weeks, Paul and Gail Duchamp, Walter Lee and Ken and Jane Filippini.

We started off the celebration with some scrumptious appetizers as well as our usual glass talk.

Any unfinished business was continued consisting of the Endowment Fund, Membership support, Museum, Raffle, and June Convention. Meeting was adjourned and we went on to a wonderfully prepared dinner by Loretta. Delicious dinner and fixings were eaten by all.

Roger and Millie graciously gave us all gifts from Hawaii. Delightful Macadamia Nut! Thank you.

We retired after our dinner into the living room for Bring and Brag. #1242 Carmen Gold Portia Etch Vase, Cobalt Chintz Keyhole Vase, Bluebell with Dresden Rose desk set, Betty, Chrysanthemum Ebony vase, Crystal Marjorie Ruffle Bowl, Heatherbloom Keyhole ashtray, Peachblo covered Candy Majestic with Spiral Optic.

After oohing and aauging over our glass finds, we continued our party with a gift exchange. We opted for glass gifts this year and no one was disappointed. Always a fun exchange and gets us in the Christmas mood.

Desserts were served, so many wonderful desserts you just couldn't choose which one to try! We filled ourselves with delight and said goodnight. Merry Christmas and Happy New Year to all. Respectfully yours, Gail Duchamp. Secretary

# NCC Events

**2013 NCC Auction  
Saturday, March 2, 2013**

\*\*\*\*\*

**2013 Convention  
June 20-23, 2013**

\*\*\*\*\*

**November Quarterly Meeting &  
Educational Program  
November 2, 2013**

*If you know about any upcoming glass shows or other glass events, please pass the word on to us at least six to eight weeks before the show dates. These listings are free of charge.*

## DEALER DIRECTORY

	<b>Connecting Buyers &amp; Sellers!</b>
	Tell us what you are looking for and we help find it.
	<b>CAMBRIDGE GLASS.US</b>
	P. Snyder 740-601-6018
	E-Mail and Find Your Glass!
<b>E-Blast</b>	psnyder@cambridgeglass.us www.cambridgeglass.us
	When you are searching for Cambridge glass, email your request and it is emailed to all members and dealers. P. Snyder, 1500 Edgewood Dr., Circleville, Ohio 43113
<b>Joanne &amp; Janine Bender</b>	
Specializing in Depression Era Glassware We Buy & Sell	
PO Box 1007 Pebble Beach, CA 93953	
831-647-9957	jjdbender@aol.com
831-647-9949	www.benderglass.com
<b>J &amp; L Treasures</b>	
Specializing in Depression Glass Heisey, Cambridge, Fostoria, Morgantown, Tiffin, etc.	
Linda Kilburn PO Box 1257 Burlington, CT 06013	
860-673-4088 (Answering machine - leave message)	
<b>Ohio Valley Antique Mall</b>	
7285 Dixie Highway (Route 4) Fairfield, OH 45014	
Cincinnati's Largest Multi-Dealer Antique Mall Hours: DAILY 9:00 a.m. - 9:00 p.m.	
513-874-7855 www.ohiovalleyantiquemall.com cfaxon@ohiovalleyantiques.com	

## Glass Shows

**March 9-10, 2013**

Metroplex Glass Show & Sale  
Grapevine, TX  
Call: 972-672-6213  
More Info: [meyerantiques@juno.com](mailto:meyerantiques@juno.com)  
[www.meyershow.com](http://www.meyershow.com)

**March 9-10, 2013**

20-30-40's Society DG Show & Sale  
Northlake, Ill  
Call: 630-851-4504  
More Info: [20-30-40society.org](http://20-30-40society.org)

**March 15-16, 2013**

Heart of America DG & Pottery Show  
Independence, MO  
816-308-7495  
hoagc@juno.com  
[www.hoagc.org](http://www.hoagc.org)

**April 6-7, 2013**

Lincoln Land DG & Pottery Show and Sale  
Springfield, Illinois  
Call: 217-546-4790  
Email: [margaret\\_davis37@sbcglobal.net](mailto:margaret_davis37@sbcglobal.net)  
More Info: [www.LincolnLandGlassClub.com](http://www.LincolnLandGlassClub.com)

**April 13, 2013**

Liberty Bell Glass Club Spring Show & Sale  
Pottstown, Pennsylvania  
Email: [LBGlassClub@verizon.net](mailto:LBGlassClub@verizon.net)  
Call: 610-666-7033

**April 13, 2013**

Nutmeg Depression Glass Club All Glass Show & Sale  
Southington, Connecticut  
Email: [lisabert@cox.net](mailto:lisabert@cox.net)  
Call: 860-432-2686

**April 20-21, 2013**

Great Lakes Depression Glass & Pottery Show & Sale  
Madison Heights, Michigan  
More Info: [www.depressionglassclub.com](http://www.depressionglassclub.com)

**April 27-28, 2013**

Del-Mar-Va Depression Glass Club  
Glass, China & Pottery Show & Sale  
Lanham, Maryland  
Call: 301-565-2361

**April 27-28, 2013**

Rocky Mountain Depression Glass Society  
Array of Color 39th Annual Show & Sale  
Castle Rock, Colorado  
More Info: [www.rmdgs.com/](http://www.rmdgs.com/)  
Call: 303-722-5446



# DEALER DIRECTORY

**Dealer Directory - \$24 for 12-months, size limited by box (see below). Includes listing on NCC website.**

## Advertising Rates:

1/8 page \$15      1/4 page \$20  
1/2 page \$30      Full page \$50  
(plus \$5 per photograph)

Electronic submissions should be emailed to:

[ncccrystalball@gmail.net](mailto:ncccrystalball@gmail.net)

Use Word. Mailed submissions and all payments should go to PO Box 416, Cambridge, OH 43725. Deadline is 10th of preceding month. Ads must be paid in advance. Show listings are FREE; send info to PO Box or e-mail address 60 days before event.

### ALADDIN LAMP BOOKS

Aladdin Electric Lamps  
SB, 229 pp., \$24.95 to C.Collectors PP.  
J.W. "Bill" Courter  
brtknight@aol.com  
550 Pioneer Ln. Phone 270-488-2116  
Calvert City, KY 42029

### Max Miller

Elegant Glassware • Books • Fiesta  
...and more  
THE MARKET PLACE  
(713) 467-0450 - BUS 10910 OLD KATY RD.  
(713) 461-1708 - RES HOUSTON TX 77043  
MMXGLASS@aol.com

### Cheshire Cat Antiques

Specializing in elegant depression to mid-century era glass and vintage kitchen glass.

Francee Boches > 305-884-0335  
fboches@cheshirecatantiques.com



### BAKER FAMILY MUSEUM

805 CUMBERLAND ST.  
CALDWELL, OHIO 43724  
740-732-6410  
bakermuseumnellbaker@msn.com

Wed & Thurs 9-4; Fri - Sat 9-5

## Classified Ads - Reach over 1,000 avid collectors of Cambridge Glass

### CRYSTAL LADY

1817 Vinton St. Omaha, NE 68108  
Bill, Joann and Marcie Hagerty  
Shop 402-341-0643 Home 402-391-6730

Specializing in Elegant Glass & Collectibles  
[www.crystalladyantiques.com](http://www.crystalladyantiques.com)

### Glen & Carolyn Robinson White Rose Antiques Specializing in Depression Era Glassware

2454 McFarland Road  
York, SC 29745

803-684-5685  
gandcrobinson@aol.com  
[whiteroseglassware.com](http://whiteroseglassware.com)

### CRYSTALLINE COLORS

Cambridge • Fostoria • Elegant Glass  
Penny Court Mall, Cambridge - 2 booths  
Riverfront Antique Mall  
New Philadelphia, OH (I-77, exit 81)  
Booth #'s 626 and 616

Lynne R. Franks 216-661-7382

### GLASS FROM THE PAST

Maureen Gillis



[www.glassfromthepast1.com](http://www.glassfromthepast1.com)  
email: maureen@glassfromthepast1.com

### Cherished Collectibles

Shopping 24 hours in our online store  
Glassware, Figurines, Collectors' Plates

[www.cherishedcollectibles.com](http://www.cherishedcollectibles.com)  
Elegant and Depression Era Glass

### TWEAK COLLECTIBLES

Specializing in Elegant Glass  
BUY & SELL  
WANTED: CAMBRIDGE TURKEYS  
417-742-3653  
[btummons@aol.com](mailto:btummons@aol.com)

### VIRTUALATTIC AT THE GLASS CHALET

SPECIALIZING IN ELEGANT DEPRESSION ERA GLASS  
Sandra L. Bridwell-Walker PO Box 3448  
William P. Walker Cleburne TX 76033-3448  
Phone: 817-202-0940 [www.virtualattic.com](http://www.virtualattic.com)  
Sandy's Cell: 817-559-0328 [virtualattic@sbcglobal.net](mailto:virtualattic@sbcglobal.net)  
theglasschalet@sbcglobal.net  
Bill's Cell: 817-357-7084

### Daugherty's Antiques Jerry and Shirley Antiques & Collectibles-Mostly Glass

[www.daughertys-antiques.com](http://www.daughertys-antiques.com)  
email: [sdaugh2515@daughertys-antiques.com](mailto:sdaugh2515@daughertys-antiques.com)

Shows & Mail Orders 2515 Cheshire North  
402-423-7426 (evenings) Lincoln, NE 68512

### THE GLASS HOUSE ANTIQUE MALL Furniture, Pottery, Glass Antiques and Collectibles I-70 Exit 146, East on SR 40

8825 E. Pike  
Norwich OH 43767 TEL 740-872-3799

### Milbra's Crystal Buy & Sell

Replacement and Matching  
Milbra Long (817) 645-6066  
Emily Seate (817) 294-9837  
PO Box 784  
Cleburne TX 76033

Specializing in  
Cambridge  
Fostoria, Heisey  
and others

E-mail: [longseat@sbcglobal.net](mailto:longseat@sbcglobal.net)  
[www.fostoriacrystal.com](http://www.fostoriacrystal.com)

### ISAACS ANTIQUES

(740) 826-4015

See our booths in Penny Court Mall in  
Cambridge and at White Pillars Antique Mall  
(Route 40, one mile west of  
I-70 Norwich, OH • Exit #164)

### The American Bell Association International, Inc.

7210 Bellbrook Drive  
San Antonio, TX 78227-1002  
[www.americanbell.org](http://www.americanbell.org)



### MARGARET LANE ANTIQUES

2 E. Main St. New Concord, OH 43762  
Lynn Welker (740) 826-7414

Cambridge Glass Matching Service  
Hours: Mon-Fri 10-12 AM, 1-5 PM  
or by appointment

### Our House Antiques

Linda and David Adams  
Las Vegas, NV  
1-800-357-7169  
[www.OurHouseAntiques.com](http://www.OurHouseAntiques.com)  
email: [David@OurHouseAntiques.com](mailto:David@OurHouseAntiques.com)



National Cambridge Collectors, Inc.  
PO Box 416  
Cambridge OH 43725

website: [www.cambridgeglass.org](http://www.cambridgeglass.org)  
e-mail: [ncccrystalball@gmail.com](mailto:ncccrystalball@gmail.com)

## Friends of Cambridge – Annual Fund

NCC exists through member giving using an Annual Fund system to raise operating funds and to ensure the preservation of Cambridge glass for future enthusiasts. The Annual Fund uses a common member "renewal" date and NCC sends out Annual Fund materials to everyone once a year. There are no monthly reminders or monthly renewal dates. The Annual Fund is NCC's primary means of support and all Annual Fund gift recognition levels are per household and include membership for all adults within the household. Additionally, each household will receive a subscription to the Crystal Ball newsletter, unlimited admissions to the museum, and rights to vote in elections for the Board of Directors. Multiple households at the same address are welcomed. NCC is a 501C(3) organization and Annual Fund gifts are allowed as a tax deduction under Section 170 of the Internal Revenue Code.

### Levels of Membership

Patron	\$35
Benefactor - Century	\$100
Benefactor - Mardi Gras	\$200
Benefactor - Japonica	\$500
President's Circle	\$1,000

President's Circle includes Convention registration for two members in the household and one copy of any new NCC publications.

### *The National Museum of Cambridge Glass*

Located at 136 S. 9th Street  
in downtown Cambridge,  
Ohio

**Closed for the  
season  
see you in April**

