



# Cambridge Crystal Ball

Published by the National Cambridge Collectors, Inc. as a resource which informs, invites and inspires people to encourage the continued preservation of the glass produced by the Cambridge Glass Company of Cambridge, Ohio for future generations.

Issue No. 454

January 2012

## *The Auction and what Really Happens by Frank Wollenhaupt*

I sent my list of 200 items into the auction committee months ago and I just got back a short list of 10 items they would take. Why only 10 items and what takes so long to decide what you're going to take and the publishing of the list and posting of the photos. Can't you work faster and take more of my items?

Not that this is a real person or real questions but I believe that some of you might have thoughts like these. For those people, I thought I would volunteer to help with some of the behind scenes work and give you a first hand look at what goes on.

First off, this is your club and you are allowed to step up and volunteer for any of the projects we have going. The auction is just one of many places where volunteers are needed. Cindy is always looking for help with the bus tours over the holidays.

Several years ago it was decided to keep the auction between 400 and 450 lots. The reason for the 400 to 450 lots is to have a full day auction and keep the bidders until the end. This should also allow all the glass to bring the best price for the consigners.

The Auction committee received over 900 glass listings this



Jack Thompson surveying the task at hand



year and cut them down to just over 400. They tried to make the selection process as even as they could. They didn't take complete lists from anyone and gave all the members equal treatment.

After the selection was made and lists sent out, it was a waiting game for the glass to arrive at the museum or shipped to Mike Arent at COPAC. This would be a good place to thank Mike Arent for allowing NCC to have glass shipped to his place of business and also allowing us a place to store, inspect, photograph and work on the auction glass. Mike's generous donation of space allows the auction committee the opportunity to streamline the procedure of unwrapping, inspecting and photographing all the glass. As everyone that has visited the Museum knows, space is something we do not have! Thanks Mike.

The deadline for delivering the glass to the auction committee is the November quarterly meeting. After the deadline the real fun starts. Jack and his committee

open every box, inspect the glass and try to identify it for the Crystal Ball/Auction list. They spent all day Thursday and most of Friday working on this project.

**Continued on page 8**

**Auction Manager's Note:** Look for all the great group and individual photos at [www.cambridgeglass.org](http://www.cambridgeglass.org). And for all your auction info, click on the "Annual Action" tab. Look for the auction preview article and more great color photos in the February Crystal Ball issue. Don't forget to also thank Frank Wollenhaupt for his help.

# National Cambridge Collectors, Inc.

PO Box 416 Cambridge, OH 43725-0416

## Board of Directors

Cindy Arent	Ken Filippini	Nancy Finley
Les Hansen	Rick Jones	Helen Klemko
Freeman Moore	Mark Nye	David Ray
Mike Strebler	Lynn Welker	Frank Wollenhaupt

## Officers

President	David Ray
Vice-President	Ken Filippini
Secretary	Freeman Moore
Treasurer	Mike Strebler
Sergeant-at-Arms	Mark Nye

Director of Strategic Planning	Rick Jones
Director of Human Resources	David Ray
Chair, Standards Committee	Sharon Miller
	Larry Everett - Committee Member
	Susan Everett - Committee Member
	David Ray - Committee Member
	Mike Strebler - Committee Member

## Member Services

<b>Vice President</b>	Frank Wollenhaupt
Member Relations	(vacant) Director of Member Relations
	Tarzan Deel - Membership Data-base Administrator
Crystal Ball Convention	Helen Klemko - Executive Editor
	Julie Buffenbarger & Nancy Finley - Convention Directors
Digital Media	Alex Citron - Manager of Facebook Operations
Member Meetings	(vacant)
Study Groups	Jeannie Moore - Study Group Coordinator

## Development

<b>Vice President</b>	Larry Everett
Campaigns	Ken & Jane Filippini - Annual Fund Directors
	Larry Everett - Director of the Heritage Society
Events	Jack & Elaine Thompson - Auction Managers
	<a href="mailto:jack1746@roadrunner.com">jack1746@roadrunner.com</a>
	Lynn Welker - Auction Manager
	Joy McFadden - Show Manager
	Mary Beth Hackett - Show Manager
	Larry & Susan Everett - Glass Dash Managers
Projects	Carl Beynon - Jeweler & Scotties Project Manager
Publicity	Frank Wollenhaupt

## Education

<b>Vice President</b>	Les Hansen
Publications	Mark Nye - Director of Publications
Research	Mark Nye - Archivist
Programming	Greg Vass - Director of Programming
NCC History	Mark Nye - Archivist

## Museum

<b>Vice President</b>	Cindy Arent
Public Operations	Sandy Rohrbough - Docent
	Betty Sivard - Docent
	Sally Slattery - Docent
Facilities & Grounds	Carl Beynon - Director of Facilities
Collections	Lynn Welker - Director of Collections
Merchandise Sales	Lynn Welker - Gift Shop Manager
	Cindy Arent - Gift Shop Manager
Community Relations	Cindy Arent

## Administration

<b>Vice President</b>	Mike Strebler
Accounting & Finance	Lisa Neilson - Office Manager
Risk Management	(vacant)
Payroll	(vacant)
Information Technology	David Adams - Webmaster
Legal	(vacant)

## ADDRESS CHANGES

Please send address changes to:  
 Membership - NCC  
 PO Box 416  
 Cambridge, OH 43725  
 or by e-mail to:  
[tarzandeel@verizon.net](mailto:tarzandeel@verizon.net)

## WEBSITES

- **NCC WEBSITE**  
[www.CambridgeGlass.org](http://www.CambridgeGlass.org)
- **MIAMI VALLEY STUDY GROUP WEBSITE**  
[www.mvsg.org](http://www.mvsg.org)

## CONTACTS

NCC Museum (phone)..... (740) 432-4245  
[nccglass@yahoo.com](mailto:nccglass@yahoo.com)  
 David Ray, President.....  
 e-mail: [westervillesh@hotmail.com](mailto:westervillesh@hotmail.com)  
 Freeman Moore, Secretary.....  
 e-mail: [freemanmoore@verizon.net](mailto:freemanmoore@verizon.net)  
 Helen Klemko, Crystal Ball Editor.....  
 e-mail: [ncccrystalball@charter.net](mailto:ncccrystalball@charter.net)

## The National Museum of Cambridge Glass



**Closed for the season  
 - see you in April**



# PRESIDENT'S MESSAGE

## *Reflecting on 2011*

The National Cambridge Collectors, Inc. was blessed with an excellent 2011. NCC's success is a direct result of the generosity and hard work of its membership and Board of Directors. I want to personally thank everyone for their support in 2011 and hope you continue your support in 2012. In this January message, I will reflect on the successes of 2011. The first major event of the year was the March Benefit Auction. Auction Directors, Jack and Elaine Thompson and Lynn Welker, organized and promoted a first-rate glass auction that provided gross commissions of \$8,462. Over 400 lots of Cambridge glass were sold. Many colors, patterns, and etchings were represented in the auction, including a variety of rare and unusual pieces. The Auction Committee has been working since October to prepare for the 2012 Benefit Auction. The complete auction listing is printed in this issue of the Crystal Ball, and with the help of David Rankin, individual photographs can be viewed on the NCC website. As you read through this year's auction list, you will immediately notice the high quality of the items consigned for the 2012 auction. The Benefit Auction is scheduled for Saturday, March 3. Mark your calendars and plan to join fellow NCC members at the March Quarterly Meeting and Benefit Auction.

The 2011 Annual Fund campaign grossed more than \$51,000. From start to finish, NCC members are responsible for facilitating the Annual Fund. Seven years ago, a team lead by NCC Treasurer, Mike Strebler, envisioned transforming NCC from a dues-based organization to a philanthropic organization. Your generosity through the Annual Fund has allowed NCC to increase its Endowment Fund to its current level of \$175,000. Thanks to Mike Strebler, Helen Klemko, Lisa Neilson, Ken and Jane Filippini for launching the Annual Fund and to all of the Friends of Cambridge who have generously supported it. You will be receiving the 2012 Annual Fund mailing in March. I sincerely hope you will continue to support NCC generously.

The fourth week of June marked the Annual Convention. First-year Convention Directors, Julie Buffenbarger and Nancy Finley, added exciting changes to the 2011 convention, which had the theme of "Under the Sea". The picnic at the museum provided everyone with great food and a relaxed atmosphere to meet and socialize with fellow Cambridge glass enthusiasts. The quality of glassware at this year's convention glass show was absolutely outstanding. Each dealer at the show brought their best pieces of Cambridge glass to sell. The selection of glassware available for sale was pleasing to all. On Saturday morning of convention, the Glass Dash provided attendees another opportunity to add more high-quality pieces of glass to their collections. The 2012 Convention theme focuses on the traditional British fox hunt and

other hunting activities – "A Hunting We Will Go!". You can look forward to learning about the details of the 2012 Annual Convention in upcoming issues of the Crystal Ball. Registration begins in April.

First-year Director of Programming, Greg Vass, energized the membership when Rose Point was announced as the topic for the November Quarterly Meeting Program. A record 82 members registered to attend the meeting and program. Lynn Welker led an informative discussion about the introduction, production, and popularity of the Rose Point etching. Members attending the meeting had the opportunity to view many unusual Rose Point items and to hear a live testimonial from a former Cambridge Glass Company worker - Effie Tom. I am pleased to announce NCC has been purchasing equipment to videotape educational programs. Member Dave Rankin has been advising NCC on the items required to successfully create a quality video. To date, a new speaker system and two wireless microphones have been purchased and were used to produce a video of the Rose Point program. A DVD copy of the Rose Point program is available for \$19.95. I must thank Dave Rankin, Lynn Welker, Greg Vass, and everyone who helped make the November Program a huge success.

Finally, everyone's assistance is needed to make 2012 another successful year. I encourage everyone to become more involved in assisting NCC to continue as the premier glass collecting club in the country. You can support NCC by writing articles for the Crystal Ball, giving generously to the Annual Fund, attending the March Benefit Auction and/or Annual Convention, leading an education program, recruiting dealers for the Glass Show and/or Glass Dash, donating glassware to the Museum or gift shop, running for the Board of Directors, or helping at the Museum. There are many other opportunities to become involved in NCC. Please volunteer.

Have a Happy New Year!

*David*

David Ray  
westervillesh@hotmail.com

# Museum Holiday Season a Success! By Cindy Arent

Each year since the new museum opened in 2002, we have seen a steady increase in visitors and the 2011 season was the best yet! Not only did we see more visitors and an increase in sales, but also additional volunteers willing to help at the museum.

The museum officially closed October 31, but the extended holiday season, November and December, is now the busiest time of the year. The first motorcoach group arrived at the museum on November 2<sup>nd</sup> just two days after we closed for the season. Later that evening the museum was the site of the Dickens Victorian Village VIP Reception. Sharon Miller made her famous wassail, and homemade cookies were served to approximately 100 guests. By Thanksgiving weekend we had already greeted 15 bus groups, as well as many visitors during the hours we were open on Saturday.

The Annual Holiday Open House was November 26<sup>th</sup> from noon to four. This event, held in conjunction with Dickens Victorian Village and the Guernsey County Court House Light Show, has also steadily grown since it began six years ago and this year was no exception! Close to 200 visitors toured the museum and bought from the gift shop in just four hours! Next year, we are considering having the Open House both Friday and Saturday during Thanksgiving weekend. The reason is that as we were preparing for the Open House on Friday, we let in several visitors that came to the door and said they would not be in Cambridge on Saturday. In addition to museum docents Betty Sivard, Sandi Rohrbough and Sally Slattery, volunteers helping with the open house were: Carl and Shirley Beynon, Lindy Thaxton, Betty Davis, Sharon Miller, Gary Wiseman, Rich Bennett, Sharon Bachna and Cindy Arent. A few of the NCC members that stopped by were Shirley Patterson, Jack and Elaine Thompson, Nancy Guegold and David and Kathy Lake from Fort Meyers, Florida.

We are very proud of our museum staff and volunteers. The following review was recently posted on the internet by a visitor in November 2011. "The Museum Is Impressive-The Staff Even More So: The museum is not large, but very impressive with the volume of objects they have on display. The staff is very knowledgeable and so friendly that they make you feel like you have come back home." Happy New Year and we look forward to seeing you at the museum in 2012!



During the Holiday Open House, Carl Beynon's great-grandchildren arrived at the museum dressed just like him. Shown is the photo with Carl and Shirley are Brennan McComb, Josie McComb, Drew McGlumphy and Ty McGlumphy.



The National Museum of Cambridge Glass was the site of the 2011 Dickens VIP Reception with over 100 guests in attendance. Shown enjoying the evening at museum are Tom Laughman-Guernsey County Commissioner, Tom Orr-Mayor of the City of Cambridge, Paul Sherry-City Engineer and museum volunteers Cindy Arent, Carl Beynon and Sharon Bachna.



McKenna Guegold and her grandmother Nancy Guegold attended the Holiday Open House. McKenna is the great-granddaughter of Walter Guegold who designed many of the Cambridge etchings including Rose Point. She is holding a piece of Inverted Strawberry that she purchased to add to her collection.



by Larry Everett

This report is provided to keep members up with what's happening on the world's largest Internet Auction site. It is not meant as an educational tool, nor as a pricing guide, and we cannot guarantee the accuracy of listings herein.

Greetings from eBay land! Susan and I wish everyone a very happy new year! Please forward interesting news to me at: [heartlamps@sbcglobal.net](mailto:heartlamps@sbcglobal.net).

Rose Point

The first item of the New Year is a hard to find Pristine 419 round 12" six compartment relish, which sold for \$89.78. The next item is a classic case of mislabeling. Listed as a cordial, but in reality a rare 3121 brandy this beauty was a steal at the "Buy it Now" price of \$29.95. A beautiful pair of manufactured electric mantle lamps made from Crown Tuscan GE (gold encrusted) #278 - 11" vases ended at \$500 for the pair. I wish we knew all the companies that purchased items from Cambridge glass and made them into lamps. A breath taking 13" plate with pierced Rose Point sterling rim marked Wallace 4607-9 sold for \$299.

Statuesque

A pair of 3011 - 7" Cupped Comport, E744 Apple Blossom (tops Gold Krystal) reached \$1,350 for the pair. I love the description "Stems are lovely nudes with tiny wings (angels?)". The seller did not know the manufacturer and they were listed in the depression glass category. A 3011/9 - 3 oz. Cocktail (Forest Green & Crown Tuscan) brought \$255.15 and a 3011/9 - 3 oz. Cocktail (Royal Blue & Crown Tuscan) brought \$759. An interesting side note for this category was the sale of a 4" 3400 Willow Blue lid for a 3400/111 - 5 1/2" Candy Box. This lid sold for \$235 with the teaser that this would make a Moonlight Blue 3011/3 sherbet into the rare covered sweet meat. Hmmm!?!

Other Etchings

The star of this category is a rare and beautiful 1402/100 - Low Sherbet, E752 Diane with a gorgeous Carmen GE bowl that sold to a very happy bidder for \$14.99. That may be the buy of the year! Speaking of great buys, a 1621 - 10" Footed Urn Vase, D/1059 Gold Encrusted Blossom Time ended at only \$185. A beautiful 3500/42 - 12" Urn, D/1001 Gold Encrusted Portia (Crown Tuscan) brought \$239. A pink No. 582 - 4" Puff Box and Cover, E704 sold for \$19.99. A nice Crown Tuscan GE Candle light 1299 - 11" Footed Vase, fetched \$209.07. A rarely seen Pomona No. 300 - 7" 3-footed Candy Box and Cover GE E527 Rose brought \$255.

Miscellaneous

A Caprice 31 - 13" Moonlight Blue Cake Salver (without the 628 candlestick) brought \$571. Also in Moonlight Blue a Caprice 339 - 8 1/2" Vase brought \$214.50 and a Caprice 342 - 6" Vase sold for \$139.50. A pair of Everglade 5 - 10" 2-piece Flower Holders with Royal Blue vases brought \$432.95 and a pair with Carmen vases brought \$406.15. A beautiful Crown Tuscan with Black Enamel decoration 3400/38 - 80 oz. Ball Shaped Jug flew to \$1,414 before finding a new home. A stunning Royal Blue 1336 - 18" Vase was another "Buy it Now" purchase at \$650. There was a knock down drag out fight for an Amethyst 3011/40 - 10" Flower or Fruit Center Bowl. The winner shelled out \$2,054 when the smoke cleared.

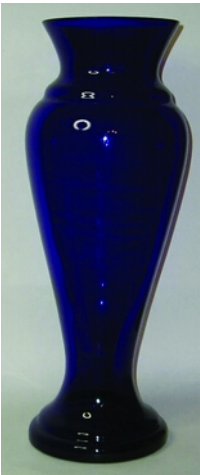
Happy hunting!



Caprice 31 - 13" Moonlight Blue Cake Salver



Crown Tuscan with Black Enamel decoration 3400/38 - 80 oz. Ball Jug



Royal Blue 1336 - 18" Vase



1402/100 - Low Sherbet, GE E752 Diane with a Carmen bowl



3500/42 - 12" Crown Tuscan Urn, D/1001 GE Portia



Everglade 5 - 10" 2-piece Flower Holders with Royal Blue vases



13" plate with pierced Rose Point sterling rim marked Wallace 4607-9



Electric mantle lamps made from Crown Tuscan GE #278 - 11" vases



1621 - 10" Footed Urn Vase, D/1059 GE Blossom Time

## Beautiful Rose Point Glass, a Former Factory Worker, Glass Swapping, and Dickens Characters Make for a Memorable November Weekend

by Greg Vass

The NCC November Meeting and Program was held November 5 in the spacious and well lit upstairs banquet room at Theo's Restaurant in downtown Cambridge. Following a delicious buffet meal, an interesting quarterly meeting and the Show & Tell session, Lynn Welker presented a wonderful informational program on the topic of Rose Point. Lynn began with the inspiration for the design of the etching, which reportedly had its origins with an intricate and rare lacework pattern. This inspiration for Rose Point was marketed as a china pattern from Pope-Gosser, followed by a silverware pattern from Wallace Manufacturing, and finally to the Cambridge Glass Company with a *beautiful* glassware pattern to match it all!



Lynn Welker presented the program on Rose Point.

Many unique items representing Rose Point collections from across the country made their way to Ohio for the benefit of the larger-than-usual November gathering of Friends of Cambridge.

The collection from the NCC museum was represented as well. Three large display tables (there could have easily been so many more) included stemware items from the popular 3121 and 3500 (Gadron) pattern lines to the less available 3106, 7966, and 3105 lines, to the *very* rarely seen 3011 (Statuesque) example. Lynn went into detail about which of these patterns was produced first (3500) and which followed along rather quickly afterward. The homes of very receptive consumers were able to enjoy the possibility of accumulating large selections of serving pieces in the years following Rose Point's 1935 debut in fine department, jewelry, and gift stores. A significant sampling of these items was displayed and given their moment in the spotlight.

A complete Martha-line punch set, a number of rarely seen and very large "supper sets," an embossed ashtray from the 3105 line, a special order gold encrusted Weiss beer

glass, a unusual ball-bottom vase and a number of other unique items in crystal were presented. Lynn spoke about the reasons why gold decorated and encrusted items are not found as much today - their significant cost difference above the regular items when they were originally marketed. Several comparison prices were given from original marketing material and the gold difference really was quite noticeable, even in those days.

A very pleasant bonus was hearing from someone directly involved with the actual production of this glass - Effie Tom - employed by Cambridge Glass from 1945 through 1950. Effie gave some interesting information about her time in the Decorating department of Cambridge, where she enjoyed her job applying Rose Point and several other etched patterns onto the glass we enjoy today.

Employed under the concept of "piece work" where she and her coworkers were compensated based on the number of items completed, Effie concentrated on making every hour spent in the factory very productive!

A focused effort was made to record this program, not only to make this enjoyable evening available to those not present, but to inform and educate those interested in an important aspect of the history of Cambridge Glass in the future. More details on this will be forthcoming.

Following a break to reload the recording equipment, Rose Point items that were fitted with attractive sterling silver rims and bases by the Wallace Manufacturing Company were discussed. Probably the best "Kodak moment" came near the end of the program where examples of Rose Point on vibrant colors – crown tuscan, ebony, carmen, amber and even royal blue - were moved into focus. Much sought after and rarely seen, these items were produced only during the earlier years of Rose Point production.



A representation of the Rose Point silverware pattern from Wallace Manufacturing



A complete Martha-line punch set etched Rose Point

**Beautiful Rose Point Glass, a Former Factory Worker, Glass Swapping, and Dickens Characters Make for a Memorable November Weekend - continued**

The weekend also included several other notable distractions, including the annual November Glass Swap, held at the NCC museum earlier in the day. Seven members had an opportunity to swap their glass for cash with an enthused group of shoppers, who were pleased to spend time in this manner prior to the beginning of the Meeting and Program later on. Many wonderful items changed ownership to the satisfaction of all participating. The museum had a very busy day before the Swap began, having hosted a bus tour earlier. Local shops where glass and other collectables are sold were known to do a brisk weekend of business.



The streetscape in downtown Cambridge was an attraction itself, with dozens of different mannequins in Victorian era dress positioned on the sidewalks, on newly refurbished benches and in other interesting spots in the downtown area. Each grouping of two or more costumed characters have an informational plaque stationed nearby to inform of what aspect of the era they are representing – receiving an education, getting hauled off to jail, etc. As this article reaches your mailbox, you may still have a few days to get to Cambridge and enjoy viewing these Dickens Victorian Village characters, prior to their extended holiday to their off-season location.

If your schedule permits, make plans *now* to attend next year’s November Program and take pleasure in the growing list of additional attractions.



A selection of Rose Point stems on display



Frank Wollenhaupt picking out his favorite item



November Quarterly Meeting, NCC member Bill Alexander of Michigan (right) found time to visit Dickens Victorian Village in downtown Cambridge.

## *The Auction and what Really Happens - continued from front page*

I was not involved with the checking in of the glass but I understand that several items listed as Cambridge glass weren't Cambridge at all. We all need to spend more time identifying our items to help the committee. If you don't have all the catalogs and reference material, you can go to [www.MVSG.org](http://www.MVSG.org) and look through the on-line listings. I also noticed how much dirty glass was sent to the auction. A little dust can be expected but old price stickers and DIRT make a great piece of glass look shabby.

After the glass is inspected and before it is wrapped, the photos need to be taken. Until last year, we (the club) only had group photos to be used in advertising, placement on the web and in the Crystal Ball. This was a way to generate some interest for the auction. Starting last year (2010) Dave Rankin took photos of every item along with 40 different group shots. These were then used for advertising, placement in the Crystal Ball and on the web site, and for the first time, all the items were available for viewing before the auction on the MVSG site and also on Craig's auction site. This really went over great. I think this was one reason last year's auction set records.

Last year Dave took all the photos by himself with some help from Jack and his committee. This year, Dave made a second photo tent which was larger and would allow Jack to set up the group shots while Dave worked on taking the individual shots. Talk about someone stepping up and helping out, Dave Rankin has done just that. Dave has designed and put together these two photo booths on his own. He has spent a lot of time to bring us the best photos possible. We all owe Dave a big thanks and pat on the back. Without him and his photo knowledge, we wouldn't have the exposure that we have today.

We wanted to start early Saturday morning taking the photos so Dave and Larry went over Friday afternoon and set up both of the photo booths. Dave knew from last year that it could be a 10 to 12 hour day. We arrived by 8:00 am and by 8:15 we were taking photos. It was a bit slow starting out till we got in a rhythm. It was decided that we would first take all the pairs and sets of items. Then Jack started putting together the groupings (Lamps, Rubina, Crown, ETC.) I think he put together over 30 of them. While Jack was working on the groups, we were taking photos of the individual items, items not in the group or items that just came from a group. We had two 15 minute breaks and 30 minutes for lunch. We were able to do lunch in 30 minutes because Jack's wife Elaine made us vegetable soup, jello salad and cookies. The day was kind of cool so the soup hit the spot. We finished with the photos right at 3:00. So in six hours, Dave shot just over 600 photos.

Now the fun begins. Jack and his team need to wrap everything up and transport it to the Museum for safe keeping till the Auction weekend. Dave needs to crop the photos, make sure the color is correct on the items and verify that we have

photos of everything. After that is done, and with the auction committee's permission, the photos will be put on the MVSG web site, sent to Helen for the Crystal Ball and sent to Craig to be added to his site.

So as you can see, there are 100's of hours spent behind the scenes just getting the auction ready. This does not include the time spent creating the auction catalog, promotional activities and, of course, setting the auction up on Auction weekend.

The next time you see Mike Arent, Jack Thompson, Elaine Thompson, Dave Rankin, Lynn Welker, Larry Everett and Sharon & Jo Miller be sure to thank them for all the great work they have done for the auction.



Elaine Thompson organizing all the packing material



The two photo booths put together by Dave Rankin



# National Cambridge Collectors, Inc.

## 2012 Benefit Auction

Saturday, March 3, 2012

Pritchard-Laughlin Civic Center

7033 Glenn Highway • US 40, West • Cambridge, Ohio

### INFORMATION

Preview at 9:00 a.m. Auction starts at 10:00 a.m.

Craig Connelly, Auctioneer Admission: \$2.00

All glass in the auction is guaranteed to be Cambridge. The Auction Managers have checked all glass carefully for verification and damage. Any piece purchased should be examined immediately by the purchaser, and returned within five items if not as represented. All damages are indicated in this catalog; last minute changes or addenda will be announced by the Auction Managers immediately prior to the auction. If no color is indicated herein, the item is crystal.

**TERMS:** Payment is expected in cash the day of the sale; checks will be accepted with proper identification.

**CATALOG:** Lots will be sold in the order printed herein. A number in parenthesis ( ) at the end of a listing indicates the number of that item available for sale. The auctioneer will announce whether such multiples are being sold individually or as a lot. If multiple items are being sold individually, a winning bidder may take any number available. If the catalog indicates “set,” “pair” or a similar term, the lot is sold as such.

**MAIL BIDS:** All absentee bids must be accompanied by a separate check for the maximum bid on each lot. Checks are to be made payable to: National Cambridge Collectors, Inc. Bids will be executed secretly and a winning bidder will pay only the final auction price. Refunds for bid overages will be sent to bidders immediately after the auction. If you are not successful, you will be notified by mail and your check(s) returned to you. All absentee bids must be accompanied by a stamped, self-addressed envelope. Any questions can be emailed to the Auction Managers at [jack1746@roadrunner.com](mailto:jack1746@roadrunner.com).

**SHIPPING:** Absentee bidders who wish their items shipped should include a separate check for shipping charges. The check can either include an estimated amount or can be left blank. Items can be shipped to street addresses only.

**WE CANNOT SHIP TO P.O. BOXES.**

**MAILING ADDRESS:** All absentee bids must be mailed to:

**NCC Auction Managers**

**P.O. Box 416**

**Cambridge, OH 43725**

**BIDS MUST BE RECEIVED BY  
THURSDAY, MARCH 1, 2012 TO BE ELIGIBLE**

**QUARTERLY MEETING:** The Quarterly Meeting of the NCC will be held on Friday, March 2nd at 7:30 p.m. A preview of the auction glass will be presented. Show & Tell glass is also welcome at the meeting.

For additional copies of the catalog listing as well as detailed information on the entire auction, please visit the website at [www.cambridgeglass.org](http://www.cambridgeglass.org) under **Annual Auction**.

**Additional copies of this catalog are included with admission to the auction.**

## 2012 NCC Benefit Auction Listing

- 1 \_\_\_\_\_ SS18 - Crown Tuscan 10" 3-Toed Bowl, Charleton Roses Décor
- 2 \_\_\_\_\_ #1066 - Mocha 1 oz. Pousse Café , Optic Bowl, Crystal Stem & Foot
- 3 \_\_\_\_\_ #94 - Ivory Sweet Pea Vase
- 4 \_\_\_\_\_ #279 - Amber 13" Ftd. Vase, Etched Portia, Gold Encrusted
- 5 \_\_\_\_\_ #3400/158 - Madeira Hld. Cocktail Shaker, Unknown Cutting
- 6 \_\_\_\_\_ #1066/4 - Crystal 5-3/8" Blown Candy Box & Cover, Etched Rose Point (tiny nicks inside base)
- 7 \_\_\_\_\_ #78 - Azurite 10" Vase, Black Enamel Peacock Décor and Edge Trim, Very Rare
- 8 \_\_\_\_\_ #3400/156 - Forest Green 12 oz. Decanter, Crystal Stopper, & #3400/1341 - 1 oz. Mushroom Cordials (6), (Set) (stopper has small chips)
- 9 \_\_\_\_\_ #3400/647 - Heatherbloom 6" 2-Lite Candlesticks, Decagon Base, (Pair)
- 10 \_\_\_\_\_ #1431 - Amber 8" Bulb Vase, Partial Cambridge Label
- 11 \_\_\_\_\_ Mardi Gras 3-1/2" H x 5-1/2" D Bowl, Hard To Find
- 12 \_\_\_\_\_ #3105 - Amber Pressed Rose Point Goblet, Cambridge Label
- 13 \_\_\_\_\_ #3011/6 - Royal Blue Statuesque Roemer (flea bite under foot rim), Hard To Find
- 14 \_\_\_\_\_ #3400/134 - Amethyst 13" Vase, Hard To Find
- 15 \_\_\_\_\_ #225 - Crystal Pristine 9-1/2" 2-Part Bowl, Blown, Etched Rose Point, Very Rare
- 16 \_\_\_\_\_ #487 - Amber 12" Oval Cheese & Cracker, Etched #703 Florentine, Gold Encrusted
- 17 \_\_\_\_\_ #693/3000 Crystal 3 oz. Canape Set, Red Enameled Hunt Scene Décor, Gold Trim
- 18 \_\_\_\_\_ #1542 - Crystal 20 oz. Lifesaver Decanter, Charleton Enamel Leaves & Gold Décor
- 19 \_\_\_\_\_ #3011/2 - Forest Green Statuesque Table Goblets (2)
- 20 \_\_\_\_\_ #68 - Ebony 7-1/2" Candlestick, Iridized Gold Cattails Decor
- 21 \_\_\_\_\_ #28 - Peach-Blo Rose du Barry (satin on one side), Everglade 16" Buffalo Hunt Scene Cupped Bowl
- 22 \_\_\_\_\_ #3130 - Crystal 7 oz. Tall Sherbet, Etched Rosepoint, Unusual
- 23 \_\_\_\_\_ W71 - Milk Glass Mount Vernon 40 oz. Decanter, Cambridge Label
- 24 \_\_\_\_\_ #3575 - Crystal Stradivari Regency 10 oz. Ftd. Tumblers, Etched Diane (8)
- 25 \_\_\_\_\_ #935 - Crystal 64 oz. Jug, Bottom 1/2 Frosted, Silver/Satin Swan Lake Décor
- 26 \_\_\_\_\_ #3700 - Pistachio 9 oz. Goblet, Pistachio Stem & Foot, Very Unusual
- 27 \_\_\_\_\_ #104 - Gold Krystal Mount Vernon 12" Celery & Relish
- 28 \_\_\_\_\_ #3011/6 - Topaz Statuesque 5 oz. Roemer, Hard To Find
- 29 \_\_\_\_\_ #1305 - Crown Tuscan 10-1/2" Globe Vase, Keyhole Stem, Etched Rose Point, Gold Encrusted
- 30 \_\_\_\_\_ #3011/7 - Crystal Optic 4-1/2 oz. Claret
- 31 \_\_\_\_\_ #306 - Carmen Pristine 6" Candy Box & Cover
- 32 \_\_\_\_\_ #3105 - Crystal Footed Ice Tea, Pressed Rose Point, Bowl Etched Rose Point, Rare
- 33 \_\_\_\_\_ #316 - Heatherbloom Georgian Sundae
- 34 \_\_\_\_\_ #1236 - Ebony 8" Keyhole Ivy Ball Vases (2)
- 35 \_\_\_\_\_ #3400/4 - Amethyst 12" 4-Toed Bowl, Etched Gloria, Gold Encrusted (gold worn, chipped foot)
- 36 \_\_\_\_\_ #1015 - Crystal Prism Advertising Sign, Gold Encrusted
- 37 \_\_\_\_\_ #51 - Helio 8" Low Ftd. Bowl, Belled, D/610-S Silver Band Overlay
- 38 \_\_\_\_\_ #520 - Amber Budha Lamp (no shade) (chip on top)
- 39 \_\_\_\_\_ Ivory 5" Atomizer
- 40 \_\_\_\_\_ #3900/575 - Crown Tuscan 10" Cornucopia Vase, Etched Rose Point, Gold Encrusted
- 41 \_\_\_\_\_ #3011/1435 - Crown Tuscan Statuesque Epergnes [Candlestick, Crystal Bobeche, #1435 Arm, #2355 Crown Tuscan vases (2)] (Pair), Rare
- 42 \_\_\_\_\_ #1402/25 - Carmen 10-1/2" Service Plate, Silver Garlands Décor
- 43 \_\_\_\_\_ 3400/102 - Amethyst 5" Globe Vase, Satin, White Enamel Grape Décor, Very Rare
- 44 \_\_\_\_\_ #1704 - Crystal 4-1/2" Hat, Etched Chantilly, Very Hard to Find
- 45 \_\_\_\_\_ #30 - Ivory 10" Shallow Belled Bowl, Etched Dresden, Gold Trimmed
- 46 \_\_\_\_\_ #3035 - Heatherbloom 6 oz. Tall Sherbet, Crystal Stem & Foot, Etched #731 (Rosalie)
- 47 \_\_\_\_\_ Mardi Gras 12-5/8" Tall Vase, Rare
- 48 \_\_\_\_\_ #1441 - Crystal 10" Keyhole 2-Lite Candelabrum, w Bobeches & #1 Prisms
- 49 \_\_\_\_\_ #1316 - Peach-Blo 7" Rabbit Box & Cover, Rare
- 50 \_\_\_\_\_ #3500/42 - Crown Tuscan 12" Covered Urn, Etched Portia, Gold Encrusted (trim wear on lid)
- 51 \_\_\_\_\_ #515 - Ivory Rose Lady Figurine
- 52 \_\_\_\_\_ #57 - Rubina 8-1/4" Ftd. Bowl, Honeycomb (good color)
- 53 \_\_\_\_\_ #3011/7 - Royal Blue Statuesque 4-1/2 oz. Claret
- 54 \_\_\_\_\_ #200 - Crystal 7" Candlesticks, Etched #529, (Pair)
- 55 \_\_\_\_\_ Multiple Color Worker's Chain, 36" wide, 15 links long on ends, 7 links long in middle, Includes Carmen & Crown Tuscan
- 56 \_\_\_\_\_ #40 - Helio 10" Bowl, D/610 Gold Band Overlay
- 57 \_\_\_\_\_ #3011/10 - Forest Green Statuesque V Cocktail, Crystal Stem & Foot, Hard To Find
- 58 \_\_\_\_\_ #112 - Amberina 7" Lattice Edge Plate, Very Rare
- 59 \_\_\_\_\_ #3105 - Crystal Sherbet, Pressed Rose Point, Bowl Etched Rose Point, Rare

- 60 \_\_\_\_\_ #13 - Goldenrod Stratford 1-1/2 Pint Jug, Signed, Unusual  
61 \_\_\_\_\_ #3500 - Crystal 9 oz. Goblets, Cut Croesus (6)  
62 \_\_\_\_\_ #3400/92 - Amethyst 32 oz. Decanter & 2-1/2 oz. Barrel Tumblers (6), (Set)  
63 \_\_\_\_\_ #3129 - Crystal 6 oz. Hollow Stem Champagne, Cut Flute Stem, Etched Elaine, Hard To Find  
64 \_\_\_\_\_ #3011 - Crown Tuscan Statuesque Candlesticks, (Pair) (2 different molds)  
65 \_\_\_\_\_ #163 - Crystal Pristine 8" Bone Plate Or Side Salad, Etched Rose Point, Rare  
66 \_\_\_\_\_ #9 - Carmen Mt. Vernon 1 lb. Candy Jar & Cover  
67 \_\_\_\_\_ #3075 - Amber 5 oz. Ftd. Tumblers, Narrow Optic, Etched Imperial Hunt Scene (6)  
68 \_\_\_\_\_ #3500/42 - Crown Tuscan 12" Covered Urn, Charleton Roses Décor  
69 \_\_\_\_\_ #437 - Ivory 9-1/2" Candlesticks, (Pair)  
70 \_\_\_\_\_ #33 - Forest Green Mount Vernon 4-1/2" Comports, Crystal Twist Stem & Foot (2)  
71 \_\_\_\_\_ #279 - Ebony 13" Ftd. Vase, Etched #705, White Gold Encrusted  
72 \_\_\_\_\_ #3700 - Crystal 1 oz. Cordial, Cut Montrose (2)  
73 \_\_\_\_\_ #73 - Amethyst Mount Vernon 5" Butter Tub & Cover, Very Hard To Find  
74 \_\_\_\_\_ Azurite Vase, 8" Tall x 9" Wide, Black Enamel & Gold Décor, Hard To Find  
75 \_\_\_\_\_ #3104 - Light Emerald 5 oz. Tall Hock, Crystal Stem & Foot (2)  
76 \_\_\_\_\_ #3900/24 - Pistachio 10-1/2" Plate, Very Unusual  
77 \_\_\_\_\_ #2651 - Emerald Near Cut Feather 7" Squat Cracker Jar, Carnival Treatment (excellent color & iridescence)  
78 \_\_\_\_\_ #46 - Crown Tuscan Sea Shell 7-1/2" Shell Flower Holder, Charleton Roses Décor (slight trim wear)  
79 \_\_\_\_\_ #1144 - Crystal 5-1/2" Ball w/ Eagle Attached, Rare  
80 \_\_\_\_\_ #332 - Topaz 6-1/2" 2-Hld. 4-Compt. Relish & Cover  
81 \_\_\_\_\_ #3011/3 - Royal Blue Statuesque Champagne  
82 \_\_\_\_\_ #423 - Crystal Pristine 5" Ftd. Ivy Ball, Etched Firenze  
83 \_\_\_\_\_ #441 - Peach-Blo Satin 11" Comport, Etched #703, White Gold Encrusted  
84 \_\_\_\_\_ #133 - Azurite 5" x 3" Cigarette Box w/Ashtray Lid, Unusual Pattern Underneath  
85 \_\_\_\_\_ #3011/9 - Crystal Statuesque 3 oz. Cocktail, Optic  
86 \_\_\_\_\_ #45 - Rubina 9-1/2" Low Ftd. Comport, Honeycomb, Good Color  
87 \_\_\_\_\_ #3400/28 - Forest Green 7" Comport, Crystal Keyhole Stem & Foot  
88 \_\_\_\_\_ SS42 - Amber 8" Flower Center, Crystal Foot  
89 \_\_\_\_\_ #3011/7 - Gold Krystal Statuesque 4-1/2 oz. Claret, Optic  
90 \_\_\_\_\_ #3077 - Peach-Blo Cheese Dish & Cover, Gray Cutting  
91 \_\_\_\_\_ #29 - Ivory 12" Shallow Belled Bowl, Etched #705, Enamel/Gold Trim  
92 \_\_\_\_\_ #512 - Peach-Blo 8-1/2" Rose Lady, Type II Base  
93 \_\_\_\_\_ #3143/39 - Moonlight Blue 86 oz. Ice Lipped Gyro Optic Jug, & 3400/115 - 14 oz. Tumblers (8), (Set)  
94 \_\_\_\_\_ #3011 - Crown Tuscan Statuesque Candlesticks, Etched Rose Point, Gold Encrusted (Pair), Rare  
95 \_\_\_\_\_ #274 - Peach-Blo 10" Bud Vase, Etched #517 (Early Wildflower)  
96 \_\_\_\_\_ #2581 - Amber 8-1/4" Stand Lamps, A Size, (Pair)  
97 \_\_\_\_\_ #3900/575 - Ebony 10" Cornucopia Vase, Charleton Gold Roses Décor  
98 \_\_\_\_\_ Amber Wide Optic Tall Tankard, Etched #703 Gold Encrusted  
99 \_\_\_\_\_ #1613/1615 - Crystal 18" Hurricane Lamps, Cut Manor, Mt. Vernon Bases, (Pair)  
100 \_\_\_\_\_ #1917/384 - Mulberry 5 oz. Covered Syrup & Plate  
101 \_\_\_\_\_ #3011 - Crystal Statuesque Cigarette Box, Short Stem  
102 \_\_\_\_\_ #525 - Green 24 oz. Cocktail Shaker & 3-1/2 oz. Ftd. Tumblers (4), Sponge Acid Tmt., Gold Trim Enameled Fighting Cocks  
Decor On Shaker, (Set)  
103 \_\_\_\_\_ #511 Version 2 - Crystal Tombstone Book Ends (Pair)  
104 \_\_\_\_\_ #1402/76 - Carmen 5" Candlesticks, (Pair), Cambridge & Price Labels  
105 \_\_\_\_\_ #1349 - Crystal 12-1/2" 4-Ftd. Bowl, Etched Marjorie, Signed  
106 \_\_\_\_\_ #68 - Azurite 10" Candlesticks, Etched Laurel Bases, (Pair)  
107 \_\_\_\_\_ #85 - Amber 10" Ftd. Cylinder Vase, Etched 731 (Rosalie) & Rim Etched #524 Betty, Unusual Combination  
108 \_\_\_\_\_ #119 - Ebony 7" Basket, Signed  
109 \_\_\_\_\_ #3011 - Crystal Statuesque 7-3/4" Flared Comport (nude twisted)  
110 \_\_\_\_\_ #104 - Jade 6" Candy Box & Cover, Etched #705, Enamel & Gold Encrusted  
111 \_\_\_\_\_ #420 - Crystal Pristine 18" Buffet Supper Set (#170 Plate, #419 Relish, #533 Mayo w/Ladle), Etched Rose Point, Rare  
112 \_\_\_\_\_ #1206 - Carmen 12 oz. Spiral Optic Tumblers (6)  
113 \_\_\_\_\_ #70 - Helio 8" Candlesticks, (Pair) & #30 - 10" Shallow Belled Bowl, All E519 Gold Band Overlay, (Set)  
114 \_\_\_\_\_ #3400/152 - Crystal 76 oz. Jug, Cut Lucia  
115 \_\_\_\_\_ #432 - Peach-Blo 8-1/2" Rams Head Bowl (scratched)  
116 \_\_\_\_\_ #1402/100 - Crystal Goblet & Wine & Cocktail, Etched Elaine, Gold Encrusted, Hard To Find  
117 \_\_\_\_\_ Rubina 10-1/4" Block Optic Vase (good color)  
118 \_\_\_\_\_ #3500/57 - Crown Tuscan 8" 3-Compt. Candy Box & Cover, Charleton Rooster & Trees Décor (gold wear)  
119 \_\_\_\_\_ #1268 - 6" 2-Lite Candelabrum, Locking Bobeches, All Etched Rose Point (Pair), (small chips under 2 bobeches)  
120 \_\_\_\_\_ #3011/9 - Carmen Statuesque Cocktails (2)  
121 \_\_\_\_\_ #1320 - Royal Blue 14 oz. Ftd. Decanter, Crystal Stopper

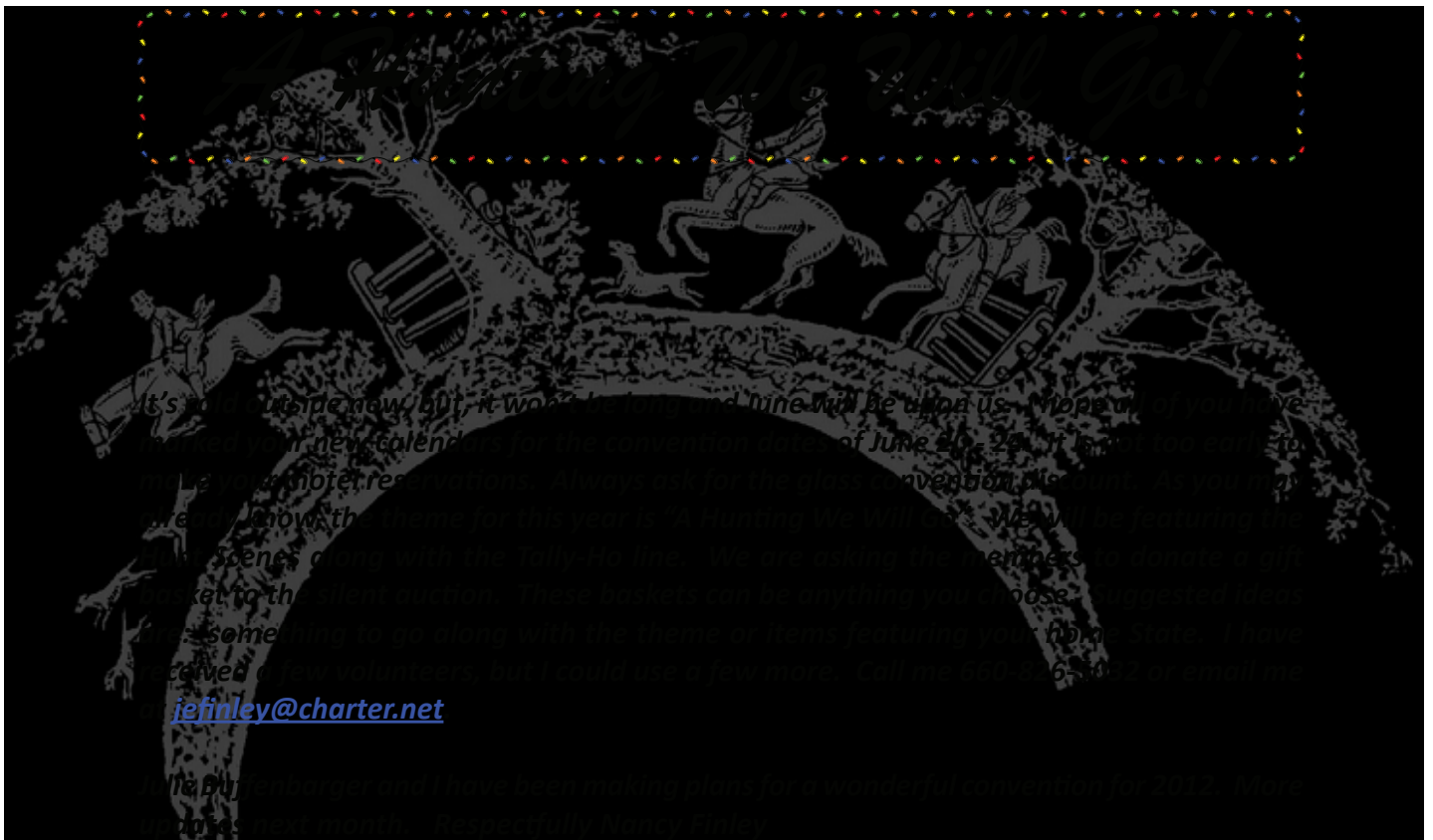
- 122 \_\_\_\_\_ #1222 - Crystal 8" Turkey & Cover  
123 \_\_\_\_\_ #52 - Carmen Mount Vernon 40 oz. Decanter  
124 \_\_\_\_\_ SS11 - Crown Tuscan Statuesque 7" Sea Shell Comport, Charleton Roses Décor  
125 \_\_\_\_\_ #67 - Amber Martha Washington Covered Pretzel Jar  
126 \_\_\_\_\_ #3400/91 - Gold Krystal 8" 3-Compt. 3-Hdl. Relish, Etched Diane  
127 \_\_\_\_\_ #437 - Crystal 9-1/2" Candlesticks, Teal Enamel & Floral Décor, (Pair), Unusual  
128 \_\_\_\_\_ #3105 - Royal Blue Pressed Rose Point Goblet  
129 \_\_\_\_\_ #877 - Light Emerald 11-1/2" Decagon Comport, Etched #731  
130 \_\_\_\_\_ SS67 - Crystal 5" 2-Lite Dolphin Candlesticks, (Pair)  
131 \_\_\_\_\_ #447 - Rubina Mayonnaise, Honeycomb (good color)  
132 \_\_\_\_\_ #8 - Heatherbloom Mt. Vernon Sugar & Cream, (Set)  
133 \_\_\_\_\_ #3400/38 - Crystal 80 oz. Ball Jug, Unusual Orange Enamel Textured Surface on Bottom Half  
134 \_\_\_\_\_ #512 - Crystal Pristine 8-1/2" 3-Ball Candlestick, Hard To Find  
135 \_\_\_\_\_ #1238 - Crown Tuscan 12" Keyhole Ftd. Vase, Etched Portia, Gold Encrusted  
136 \_\_\_\_\_ SS70 - Crystal 3-1/2" Turtle Flower Block (bruise underneath)  
137 \_\_\_\_\_ #3400/95 - Forest Green 4-1/2" Puff Box, Etched Apple Blossom  
138 \_\_\_\_\_ #3400/1185 - Amber 10" 2-Hld. Bowl, Etched Portia, Gold Encrusted, Signed (slight trim wear)  
139 \_\_\_\_\_ #1604 - Crystal 10" Hurricane Lamp, Etched Blossom Time  
140 \_\_\_\_\_ #627 - Willow Blue Frosted 4" Candlesticks, (Pair)  
141 \_\_\_\_\_ #3900/115 - Crystal 76 oz. Jug, Etched Chantilly  
142 \_\_\_\_\_ #3500/26 - Crystal 12" Rams Head Fruit Basket, Cut Adonis  
143 \_\_\_\_\_ SS44 - Crown Tuscan Sea Shell 6" Flower Center  
144 \_\_\_\_\_ #1307 - Amethyst 5" 3-Lite Candlesticks, High Post, (Pair)  
145 \_\_\_\_\_ Ebony Lamp, Gold Encrusted Peacock  
146 \_\_\_\_\_ #518 - Crystal 8-1/2" Draped Lady Figure Flower Holder  
147 \_\_\_\_\_ #1505 - Crystal 6" Flower Bars (2), & #1504 - Crystal 5-1/2" Flower Circles (2), (Set)  
148 \_\_\_\_\_ #3400/4 - Crown Tuscan 12" 4-Ftd. Bowl, Etched Rose Point, Gold Encrusted  
149 \_\_\_\_\_ #168 - Amber 10" Hdl. Sandwich Tray, Etched Imperial Hunt Scene, Gold Encrusted  
150 \_\_\_\_\_ #3106 - Crystal 3 oz. Cocktail, Etched Elaine, Hard To Find  
151 \_\_\_\_\_ #556 - Crystal 8" Plates, Etched Willow, Blue Enamel Encrusted, Gold Band (4)  
152 \_\_\_\_\_ #1307 - Forest Green 3-Lite Candelabrum, Tall Post  
153 \_\_\_\_\_ Peach-Blo Melon Boy Figure Flower Holder, Cambridge Label  
154 \_\_\_\_\_ #22 - Carmen Mount Vernon 3 oz. Ftd. Tumblers (6)  
155 \_\_\_\_\_ #3900/35 - Crystal 13-1/2" 2-Hld. Cake Plate, Etched Wildflower  
156 \_\_\_\_\_ #432 - Jade 8-1/2" Rams Head Bowl  
157 \_\_\_\_\_ #52 - Royal Blue Mount Vernon 40 oz. Decanter, Crystal Stopper  
158 \_\_\_\_\_ #3085 - Amber 2-1/2 oz. Cocktail, Etched Imperial Hunt Scene, Gold Encrusted  
159 \_\_\_\_\_ #3122 - Heatherbloom 1 oz. Cordial, Crystal Stem & Foot  
160 \_\_\_\_\_ SS1 - Crown Tuscan Sea Shell 5" Bread & Butter Plate, Charleton Blue Mist Décor, Charleton Label (some rim gold wear)  
161 \_\_\_\_\_ #4022/338 - Crystal Near Cut 9" Punch Bowl & Foot, Unusual  
162 \_\_\_\_\_ #3500/57 - Crown Tuscan 8" 3-Compt. Candy Box & Cover  
163 \_\_\_\_\_ #1070 - Ebony 36 oz. Pinch Decanter, Silver Overlay Wheat Décor  
164 \_\_\_\_\_ #4004 - Crystal 6-1/4" Tall Comport, etched Marjorie  
165 \_\_\_\_\_ Brown Owl Lamp (chips on base of owl)  
166 \_\_\_\_\_ #70 - Moonlight Blue Caprice 7" Candlesticks & Prisms (Pair)  
167 \_\_\_\_\_ #16 - Crystal Caprice Fingerbowl w/Mayonnaise Liner, Cambridge Label  
168 \_\_\_\_\_ #36 - Crystal Caprice 13" Cake Salver (has stone in glass)  
169 \_\_\_\_\_ #250 - Moonlight Blue Caprice 3-1/2" Vase, Blown  
170 \_\_\_\_\_ #202 - Crystal Caprice Cracker Jar & Cover, Correct Hld. (small chip on foot)  
171 \_\_\_\_\_ #165 - Moonlight Blue Caprice 6" 3-Ftd. Candy Box & Cover  
172 \_\_\_\_\_ #1358/8 - Crystal Epergne [#1357 w/#1437 arm, #2355 - 6" vases(2), #19 2-Lock Bobeches(2)] (Pair), (arms & vases not correct size)  
173 \_\_\_\_\_ #201 - Moonlight Blue Caprice Ice Bucket, 4 Ftd (no tongs) (large foot chip)  
174 \_\_\_\_\_ #236 Crystal Caprice 8" Ftd. Rose Bowl & #1502 - 4 1/2" Flower Block (large chip on block)  
175 \_\_\_\_\_ #184 - Amethyst Caprice 12 oz. Tumbler  
176 \_\_\_\_\_ #74 - Moonlight Caprice 3-Lite Candlestick  
177 \_\_\_\_\_ Mocha Caprice Luncheon Set: #38 - Sugar & Cream, & #22 - 8-1/2" Salad Plates(4), & #17 Cups & Saucers (4), (Set)  
178 \_\_\_\_\_ #342 - Moonlight Blue Caprice 6" Vase  
179 \_\_\_\_\_ #96 - Moonlight Blue Caprice Salt & Pepper Shakers, Glass Tops, (Pair)  
180 \_\_\_\_\_ #117 - Crystal Caprice 3 oz. Oil Bottle  
181 \_\_\_\_\_ #1458 - Crystal 7-1/2" 3-Lite Candelabrum w/#19 Bobeches  
182 \_\_\_\_\_ #136 - Moonlight Blue Caprice 6-1/2"(across)Tall Comport  
183 \_\_\_\_\_ #101 - Moonlight Blue Caprice 3 oz. Oil, Crystal Stopper

184 \_\_\_\_\_ #1564 - Crystal Caprice 5-Lite Candelabra  
185 \_\_\_\_\_ #235 - Crystal Caprice 6" Rose Bowl, 4-Ftd.  
186 \_\_\_\_\_ #65 - Moonlight Blue Caprice 11" 2-Hld. Oval Bowl, 4 Ftd.  
187 \_\_\_\_\_ #94 Crystal Caprice 2-1/2" 2-Compt. Individual Nut & Mint (5)  
188 \_\_\_\_\_ #207 - Moonlight Blue Caprice Cigarette Box & Cover, 3 1/2" x 2 1/2" (Pair)  
189 \_\_\_\_\_ #300 - Crystal Caprice 4-1/2 oz. Clarets (6), 2 w/Labels  
190 \_\_\_\_\_ #21 - Moonlight Blue Caprice 6-1/2" Bread & Butter Plates (8)  
191 \_\_\_\_\_ #310 - Crystal Caprice 10 oz. Tumblers, Tall (6)  
192 \_\_\_\_\_ #236 - Moonlight Blue Caprice 8" Rose Bowl, 4 Ftd. (large foot chip)  
193 \_\_\_\_\_ #187 - Crystal Caprice 35 oz. Decantor (stopper missing, stained)  
194 \_\_\_\_\_ #127 - Moonlight Blue Caprice 5" Mayonnaise Bowl  
195 \_\_\_\_\_ #87 - Crystal Caprice Mustard & Cover & Spoon (Pair)  
196 \_\_\_\_\_ Ebony 4 1/2" Atomizer, (Shape same as new color bk Plate#7, Row3, Item#3)  
197 \_\_\_\_\_ #1337 - Forest Green Cigarette Holder, Crystal Stem & Ashtray Foot  
198 \_\_\_\_\_ #3011/10 - Amethyst Statuesque V Cocktail, Crystal Stem & Foot, Hard To Find  
199 \_\_\_\_\_ Azurite Tall Table Lamp, (made from #779 - 14" vase)  
200 \_\_\_\_\_ #533 - Light Emerald 3-Piece Mayonnaise Set, Etched #732, Gold Trim, Signed  
201 \_\_\_\_\_ #1309 - Crown Tuscan 5" Globe Vase, Etched Diane, Gold Encrusted  
202 \_\_\_\_\_ #3011/3 - Forest Green Statuesque Champagne  
203 \_\_\_\_\_ #3400/38 - Crystal 80 oz. Ball Jug, Silver/Satin Swan Lake Décor  
204 \_\_\_\_\_ #851 - Willow Blue Decagon Ice Pail, Etched #731, Gold Trim, Gold Hld., Signed (no tongs)  
205 \_\_\_\_\_ #1349 - Crystal 12-1/2" 4-Ftd. Bowl, Crimped & #1307 - Candlesticks (Pair), All Etched D997 Chintz, (Set)  
206 \_\_\_\_\_ #518 - Crown Tuscan 8-1/2" Draped Lady Figure Flower Holder (badly cracked)  
207 \_\_\_\_\_ #2651 - Crystal Near Cut Feather Footed Loaf Bread Plate (Banana Stand), Unusual Shape  
208 \_\_\_\_\_ #92 - Helio 12" Stick Vase & #90 - Primrose 8" Stick Vase, (Set)  
209 \_\_\_\_\_ #1236 - Carmen 8" Keyhole Ivy Ball Vase  
210 \_\_\_\_\_ #3105 - Forest Green Cordial, Pressed Rose Point  
211 \_\_\_\_\_ #628 - Peach-Blo 3-1/2" Candlesticks, Satin Bottom, Etched #725, White Gold Encrusted, (Pair)  
212 \_\_\_\_\_ #3900/575 - Crystal 10" Cornucopia Vase, Etched Rosepoint  
213 \_\_\_\_\_ #315 - Amber 28 oz. Decanter, Etched Vintage (Grape)  
214 \_\_\_\_\_ #23 - Azurite 10" Deep Bowl, Etched Betty, Gold Encrusted  
215 \_\_\_\_\_ #3011/7 - Carmen Statuesque 4-1/2 oz. Claret  
216 \_\_\_\_\_ #3600/497 - Crystal Martha 7" Candlesticks w/Prisms, (Pair)  
217 \_\_\_\_\_ #581 - Peach-Blo 4" Puff Box & Cover, & #198 - Cologne (2), (Set) (1 dauber broken)  
218 \_\_\_\_\_ #155 - Helio 8" Plates, Star Bottom, (3)  
219 \_\_\_\_\_ #1236 - Crown Tuscan 7-1/2" Keyhole Ivy Ball Vase  
220 \_\_\_\_\_ #3500 - Crystal 2-1/2 oz. Ftd. Tumbler, Etched Rose Point  
221 \_\_\_\_\_ #1917/329 - Ebony 11-1/2" Service Plate, Sterling Silver Gazelles & Medallions  
222 \_\_\_\_\_ #7966 - Crystal 1 oz. Cordial, Moss Rose Décor (Talisman Rose w/o Gold)  
223 \_\_\_\_\_ #1 - Carmen 4-1/2" Muddler  
224 \_\_\_\_\_ #6004 - Crown Tuscan 5-1/2" Vase, Ebony Foot  
225 \_\_\_\_\_ #1321 - Royal Blue 28 oz. Decanter & #7966 - 2 oz Sherries (4), Silver Grapes & Leaves Décor, (Set)  
226 \_\_\_\_\_ #3011/2 - Smoke Statuesque 9" Table Goblets (4)  
227 \_\_\_\_\_ #512 - Light Emerald 8-1/2" Rose Lady Figure Flower Holder  
228 \_\_\_\_\_ #2367 - Ebony 10" Vase, GoldTrim, Gold Iridized Cattails Décor  
229 \_\_\_\_\_ Crystal Pristine Twin Salad Dressing Bowl (#1402/96 w/o lines), Etched Lily of the Valley, Sample Cuttings  
230 \_\_\_\_\_ #3011/9 -Forest Green & Dark Emerald (3) Statuesque 3 oz. Cocktails, Crystal Stem & Foot (4 Total)  
231 \_\_\_\_\_ #1330 - Royal Blue 5" Sweet Potato Vase (slight stain)  
232 \_\_\_\_\_ #3400/102 - Crystal 5" Globe Vase, Etched Elaine  
233 \_\_\_\_\_ #30 - Willow Blue Everglade 16" Plate  
234 \_\_\_\_\_ #2766 - Emerald Near Cut Thistle 9" Bowl, Gold Décor (two sides flattened)  
235 \_\_\_\_\_ #3400/52 - Crystal 5-1/2" Butter & Cover, Etched Wildflower (minor scratches)  
236 \_\_\_\_\_ Turquoise 8" Trefoil Plate, Rings On Bottom (rings similar to Tally-Ho)  
237 \_\_\_\_\_ #3400/92 - Amber 32 oz. Ball Shaped Decanter, Crystal Stopper, Etched Diane  
238 \_\_\_\_\_ #1273 - Ebony 9-1/2" Candlesticks, Gold Trim (Pair)  
239 \_\_\_\_\_ #279 - Peach-Blo 13" Ftd. Vase, Etched #742, Gold Encrusted Rim  
240 \_\_\_\_\_ #826 - Light Emerald Sani-Shaving Service, Pat. Pending Mark, Hard To Find  
241 \_\_\_\_\_ #1636 - Crystal 4-1/2" Peg Blue Jay for Cambridge Arms  
242 \_\_\_\_\_ #3797/27 - Ebon 6" Salad Bowl, Gold D/Stars  
243 \_\_\_\_\_ #2355 - Azurite 10" Bud Vase, Ruffled Top  
244 \_\_\_\_\_ #767 - Light Emerald 8" Vase, Crimped Top, Aero Optic  
245 \_\_\_\_\_ #7 - Willow Blue Everglade 11" Bowl, 3-Ftd.  
246 \_\_\_\_\_ Farber Duchess Filigree Holder w/Amethyst 14 oz. Decanter, & #7966 - 1 oz. Cordials (6), (Set)

247 \_\_\_\_\_ #554 - Crystal 7" Plates, Etched Willow, Nankin Green Enamel Encrusted (3)  
 248 \_\_\_\_\_ #3400/14 - Ebony 7" Tall Comport, Etched Gloria, Silver Encrusted  
 249 \_\_\_\_\_ #3400/154 - Amethyst 76 oz. Pinched Doulton Jug & #1070 - 14 oz. Pinched Tumblers (4), (Set)  
 250 \_\_\_\_\_ #3500/90 - Peach-Blo Cigarette Holder/Torchere, Crystal Stem & Ashtray Foot  
 251 \_\_\_\_\_ #5 - Rubina 7-1/4" Cupped Bowl, Honeycomb (good color)  
 252 \_\_\_\_\_ #3900/72 - Crystal 6" 2-Lite Candlesticks, Etched Rose Point, (Pair)  
 253 \_\_\_\_\_ Farber #5454 - Amethyst Condiment Set, Salt & Pepper and Oil & Vinegar (missing stoppers), Chrome Holders, Tray & Tops  
 254 \_\_\_\_\_ #3075 - Peach-Blo 12 oz. Tumblers, Etched Hunt Scene, Gold Encrusted (2), (trim wear)  
 255 \_\_\_\_\_ #1528 - Smoke 10" Vase, D/Stars, Gold Encrusted, Paper Label  
 256 \_\_\_\_\_ #119 - Primrose 7" Basket, (10" Tall)  
 257 \_\_\_\_\_ #851 - Gold Krystol Decagon Ice Pail, Etched Apple Blossom, Gold Encrusted, Gold Hld. & Tongs, Signed  
 258 \_\_\_\_\_ Windsor Blue Seashell 2-3/4" 3-Toed Cigarette Snuffer  
 259 \_\_\_\_\_ #3143/39 - Crystal 86 oz. Ice-Lipped Gyro Optic Pitcher, Sterling Silver Flowers Overlay  
 260 \_\_\_\_\_ #1401 - Heatherbloom Jefferson 10 oz. Goblet  
 261 \_\_\_\_\_ Peach-Blo Frosted Melon Boy Figure Flower Holder  
 262 \_\_\_\_\_ 1956 Cambridge Catalog, 1958 Price List, All Original  
 263 \_\_\_\_\_ #3400/69 - Amethyst After Dinner Cups & Saucers, All Signed, (2 Sets)  
 264 \_\_\_\_\_ #3600/425 - Crystal Martha 11" Bowl, Flared, Etched Chantilly  
 265 \_\_\_\_\_ #97 - Ivory 6" 3-Compt. Candy Box & Cover, Black Line Enamel Décor on Lid  
 266 \_\_\_\_\_ #2351 - Crystal Near Cut 21" Electric Lamp (replaced fittings)  
 267 \_\_\_\_\_ #27 - Royal Blue Mount Vernon 3 oz. Wines (6)  
 268 \_\_\_\_\_ #2635 - Crystal Near Cut Fernland 8-3/4" Tall Quart Jug  
 269 \_\_\_\_\_ #1206 - Willow Blue 12 oz. Spiral Optic Tumblers (6)  
 270 \_\_\_\_\_ #3775 - Crystal 1 oz. Cordial, Etched Chantilly  
 271 \_\_\_\_\_ #3400/113 - Royal Blue 35 oz. Decanter w/Stopper, Silver Bands, Original Silver Label (some cloudiness)  
 272 \_\_\_\_\_ #3500 - Crystal 10 oz. Ftd. Tumblers, Etched Elaine (4)  
 273 \_\_\_\_\_ #4 - Green 5-1/2" x 8-1/2" Photo Tray  
 274 \_\_\_\_\_ #3500/57 - Crystal 8" 3-Compt. Candy Box & Cover, Etched Wildflower, Gold Encrusted Top Only  
 275 \_\_\_\_\_ #1402/139 - Royal Blue 10" Top Hat  
 276 \_\_\_\_\_ #9403 - Crystal 12 oz. Tumbler, Yale Bulldogs Décor  
 277 \_\_\_\_\_ #3077 - Light Emerald 9 oz. Goblets, Etched #703, Gold Encrusted (2)  
 278 \_\_\_\_\_ #1217 - Amber Bitters Bottle  
 279 \_\_\_\_\_ Farber #5456 - Milk Glass Cream & Sugar Set, Brass Holders, Tray & Top  
 280 \_\_\_\_\_ #198 - Amber Colognes w/Daubers Intact, (Pair)  
 281 \_\_\_\_\_ #3500/17 - Crystal 12" Ftd. Bowl, Etched Elaine  
 282 \_\_\_\_\_ SS44 - Carmen 6" Flower Center, Crystal Foot  
 283 \_\_\_\_\_ Crystal 16" Tall Original Cambridge Spiral Lamps, Plus Shades (2)  
 284 \_\_\_\_\_ #1284 - Forest Green 10" Vase, Crystal Foot  
 285 \_\_\_\_\_ #623 - Amber Hld. Serving Tray & #1630 - 10 oz. Tall Tumblers (4), Etched #695, Set  
 286 \_\_\_\_\_ #1119 - Crystal Eagle Bookends, (Pair)  
 287 \_\_\_\_\_ #3797/85 - Crystal 32 oz. Decanter, Charleton Light Blue Cross-Hatch Décor, Unusual  
 288 \_\_\_\_\_ #39 - Willow Blue Everglade 14-1/2" Oval Ftd. Plate  
 289 \_\_\_\_\_ #509 - Crystal 2-Kid Figure Flower Holder  
 290 \_\_\_\_\_ #156 - Azurite 8" Plate, E519 Gold Band Overlay  
 291 \_\_\_\_\_ #2750/42 - Crystal Near Cut Colonial Tall May Basket  
 292 \_\_\_\_\_ #3400/38 - Royal Blue 80 oz. Ball Jug  
 293 \_\_\_\_\_ #3500 - Crystal 10 oz. Ftd. Tumblers, Etched Rose Point (4)  
 294 \_\_\_\_\_ #300 - Peach-Blo 6" 3-Toed Candy Box & Cover, Border Etched Willow  
 295 \_\_\_\_\_ #1321 - Amethyst 28 oz. Ftd. Decanter & #7966 - 2 oz. Sherries (6), (Set) (decanter has small nick under base)  
 296 \_\_\_\_\_ #3077 - Willow Blue 1 oz. Cordial, Etched Cleo  
 297 \_\_\_\_\_ #26 - Carmen Mount Vernon 3-1/2 oz. Cocktails (6)  
 298 \_\_\_\_\_ #4 - Crystal 11" Star Candlestick, Hard To Find  
 299 \_\_\_\_\_ #3500/25 - Crown Tuscan 9" Ram's Head Bowl  
 300 \_\_\_\_\_ #3500/37 - Crystal 7" Tall Comport, Etched Rose Point, Gold Encrusted  
 301 \_\_\_\_\_ #3400/79 - Light Emerald 6 oz. Tall Oil, g.s.  
 302 \_\_\_\_\_ #3400/17 - Crystal 3" 4-Toed Nut Dish, Etched Elaine  
 303 \_\_\_\_\_ #1402/52 - Royal Blue Ice Pail, Chrome Hld.  
 304 \_\_\_\_\_ #3900/19 - Crystal Mayonnaise, Etched Diane  
 305 \_\_\_\_\_ #2834 - Crystal 5-1/2 oz. Horn Candy Bottle  
 306 \_\_\_\_\_ #673 - Amethyst 15" Fancy Bowl, Rolled Edge (base chip)  
 307 \_\_\_\_\_ #3400/111 - Willow Blue 5-1/2" Candy Box, Etched Apple Blossom  
 308 \_\_\_\_\_ #3400/34 - Crystal 9-1/2" 2-Hdl. Bowl, Etched Rose Point  
 309 \_\_\_\_\_ #2760 - Crystal Near Cut Daisy Archfoot 5-1/4" Basket, Faintly Signed

310 \_\_\_\_\_ #68 - Azurite 10" Candlesticks, Base Etched #619, Gold Encrusted, (Pair)  
311 \_\_\_\_\_ #1095 - Light Emerald Decagon 3 Piece Sugar & Cream Set, Lightning Bolt Handles, Etched Cleo  
312 \_\_\_\_\_ #1236 - Light Emerald 8" Keyhole Ivy Ball Vase  
313 \_\_\_\_\_ #1090 - Ebony 7" Decagon Comport, Etched #733  
314 \_\_\_\_\_ #3121 - Crystal 1 oz. Cordial, Cut Achilles  
315 \_\_\_\_\_ Silverplate Centerpiece Set (Silver Candlestick, #1563 Arm, 4 Matching Silver Peg Nappies, Gadroon Design, (Set)  
316 \_\_\_\_\_ #511 - Amber Bookend, Etched Dresden, Gold Encrusted, (Pair) (some gold wear, corner base chip)  
317 \_\_\_\_\_ #2631 - Crystal Near Cut Marjorie 34 oz. Water Bottle, Signed  
318 \_\_\_\_\_ #84 - Carmen Mount Vernon 14 oz. Stein, Crystal Handle, Signed  
319 \_\_\_\_\_ #1236 - Dianthus Pink 8" Keyhole Ivy Ball Vase  
320 \_\_\_\_\_ #3400/638 - Crystal 6-1/2" 3-Lite Candlesticks, Etched Rose Point, Cambridge Labels, (Pair)  
321 \_\_\_\_\_ #1070 - Ebony 36 oz. Pinch Decanter, Golf Ball Stopper, Silver Etched Décor On Corners  
322 \_\_\_\_\_ #3400/48 - Crystal 13" 4-Ftd. Shallow Bowl, Fancy Edge, Etched Roselyn  
323 \_\_\_\_\_ #90 - Jade 8" Stick Vase, Gold Trim, (gold trim worn)  
324 \_\_\_\_\_ #157 - Crystal 7 oz. Marmalade & Silver Cover, Etched Rose Point  
325 \_\_\_\_\_ #1040 - 3" Swans (Light Emerald, Style I, Crystal, Style II, Ebony, Style I) (3 Total), Signed, (Ebony chipped)  
326 \_\_\_\_\_ #3400/38 - Amethyst 80 oz. Ball Jug, & 12 oz. Tumblers (6), (Set)  
327 \_\_\_\_\_ #2699/110 - Crystal Near Cut Buzz Saw 4 oz. Hld. Perfume, Original Stopper, Signed  
328 \_\_\_\_\_ #319B3 - Late Emerald Georgian Basket, Crystal Handle (round-ish)  
329 \_\_\_\_\_ #245 - Crystal Pristine 6-Piece Condiment Set, Cambridge Labels  
330 \_\_\_\_\_ #3400/647 - Gold Krystol 6" 2-Lite Keyhole Candlesticks, (Pair)  
331 \_\_\_\_\_ #2671 - Crystal Near Cut 12" Vase, Signed (base chips)  
332 \_\_\_\_\_ #1528 - Smoke 10" Vase, Etched Stars  
333 \_\_\_\_\_ #1327 - Ebony 1 oz. Cordial  
334 \_\_\_\_\_ #2780 - Mulberry Near Cut Strawberry 4" Round Nappy, A Shape, Carnival Treatment, Signed  
335 \_\_\_\_\_ #3900/72 - Crystal 6" 2-Lite Candlesticks, Etched Rose Point, (Pair)  
336 \_\_\_\_\_ #124 - Peach-Blo 3-1/2" Favor Basket, 5" Tall  
337 \_\_\_\_\_ #963 - Light Emerald 10-1/2" 4-Compt. Square Relish, Etched #732  
338 \_\_\_\_\_ #3450 - Carmen Nautilus 2-1/2 oz. Oil (very dark color)  
339 \_\_\_\_\_ #1402/122 - Crystal 10" 3-Compt Bowl, Etched Elaine  
340 \_\_\_\_\_ Amber Honeycomb 6" Ftd. Candy Jar & Cover  
341 \_\_\_\_\_ #2351 - Near Cut Table Lamp, Base Only  
342 \_\_\_\_\_ #4000/165 - Emerald Green Cascade Candy Box & Cover, Charleton Décor  
343 \_\_\_\_\_ #1041 - Crystal Satin 4 1/2" Swan, Style II, Enamel Décor on Beak & Fins  
344 \_\_\_\_\_ Windsor Blue Daisy & Button Hat  
345 \_\_\_\_\_ #3500/57 - Crown Tuscan 8" 3-Compt. Candy Box & Cover, Etched Rose Point, Gold Encrusted (slight trim wear)  
346 \_\_\_\_\_ #1321 - Crystal 28 oz. Decanter, Etched Martha, Gold Encrusted (slight water stain)  
347 \_\_\_\_\_ #56 - Willow Blue Everglade 13" 3-Toed Sandwich Plate  
348 \_\_\_\_\_ #18 - Amber, Forest Green & Crystal Mount Vernon 7 oz. Toilet Bottles, (3 Total)  
349 \_\_\_\_\_ #3400/141 - Peach-Blo 80 oz. Jug, Low Handle  
350 \_\_\_\_\_ #1206 - Willow Blue 76 oz. Jug, Spiral Optic  
351 \_\_\_\_\_ #3035 - Crystal 6 oz. Low Sherbets, Etched Elaine (4)  
352 \_\_\_\_\_ #6 - Helio 6" Bowl  
353 \_\_\_\_\_ #3500 - Crystal 10 oz. Goblets, Cut Adonis (4)  
354 \_\_\_\_\_ #163 - Forest Green Martha 8-1/2" Asparagus Plate  
355 \_\_\_\_\_ #3700 - Crystal 1 oz. Cordial, Cut Laurel Wreath, Cambridge Label  
356 \_\_\_\_\_ #2 - Crystal Birds (Pair) & #3 - Crystal Bird, (Set) (one #2 has tail chip)  
357 \_\_\_\_\_ #2651 - Crystal Near Cut Feather 11-1/2" Punch Bowl & Base, A Shape, Signed  
358 \_\_\_\_\_ SS30 - Crown Tuscan Seashell 4-Toed 3-Compt. Relish, Signed (chip outside edge)  
359 \_\_\_\_\_ #1215/619 - Crystal 3-Pc. Oil & Vinegar Set, Unknown Cutting, Signed, (1 stained)  
360 \_\_\_\_\_ #1137 - Crystal 5-1/2" Blue-jay Figure Flower Holder  
361 \_\_\_\_\_ #1402/7 - Crystal 6 oz. Tall Juice, Etched Elaine  
362 \_\_\_\_\_ #3116 - Crystal 1 oz. Cordial, Cut Corsage  
363 \_\_\_\_\_ #2780 - Near Cut Strawberry Hld. Squat Basket, Signed  
364 \_\_\_\_\_ #65 - Helio 9-1/2" Doric Column Candlesticks, (Pair) (most gold gone)  
365 \_\_\_\_\_ #3600 - 10 oz. Goblets(8) & 4 oz. Oyster Cocktails(8) & 7 oz. Low Sherbets(4), Etched Blossom Time, Gold Trim, (Set)  
366 \_\_\_\_\_ #3011/25 - Crystal Frosted (Ball, Stem & Foot) Statuesque 4-1/2" Ivy Ball, (bowl stained & non-original satin)  
367 \_\_\_\_\_ Crystal Mount Vernon: #25 - 4-1/2 oz. Clarets (7), & #42 - 4-1/2 oz. Low Sherbet, & #87 - 1 oz. Cordials (4), & #19 - 6" &  
B&B Plates (5), & #7 Saucers only (3), (Set)  
368 \_\_\_\_\_ #1236 - Amethyst 8" Keyhole Ivy Ball Vase  
369 \_\_\_\_\_ #3750 - Crystal 1 oz. Cordial, Cut Harvest  
370 \_\_\_\_\_ #597 - Willow Blue Decagon 8-3/8" Plates, Etched Cleo, Signed (6)  
371 \_\_\_\_\_ #39 - Light Emerald 11-1/2" Flat Rim Bowl, Etched #704 (scratched)

- 372 \_\_\_\_\_ Topaz 8 oz. Dog Bottle, no cap
- 373 \_\_\_\_\_ #3778 - Crystal 1 oz. Cordial, Cut Deerfield
- 374 \_\_\_\_\_ #2653 - Crystal Near Cut Ribbon 9" Nappy, C Shape (2 chips)
- 375 \_\_\_\_\_ Light Emerald Covered Candy, Honeycomb, Silver Overlay (same blank as rubina)
- 376 \_\_\_\_\_ #1236 - Royal Blue 8" Keyhole Ivy Ball Vase
- 377 \_\_\_\_\_ #2351 - Near Cut Whiskey Jug (slight roughness on bottom of stopper)
- 378 \_\_\_\_\_ #97 - Azurite 6" Candy Box & Cover
- 379 \_\_\_\_\_ #37 - Peach-Blo Martha Washington 1 lb. Candy Jar (no cover)
- 380 \_\_\_\_\_ Farber #5562 - Amethyst 5-1/2" Tall Comport, Pierced Grape Brass Holder
- 381 \_\_\_\_\_ #101 - Crystal Pristine 32 oz. Cocktail Shaker, Silver Overlay Knob, Etched Chantilly
- 382 \_\_\_\_\_ #861 - Peach-Blo 11" Center Hld. Relish, Etched #517 & #527
- 383 \_\_\_\_\_ #3 - Crystal Everglade 6" 2-Holder Candelabums, (Pair)
- 384 \_\_\_\_\_ #3400/54 - Carmen Cups & Saucers, (2 Sets), Signed
- 385 \_\_\_\_\_ #1917/115 - Crystal 5" Comport, Etched Dresden
- 386 \_\_\_\_\_ #3122 - Forest Green 1 oz. Cordial
- 387 \_\_\_\_\_ #1506/2 - Moonlight Blue & Peach-Blo 5" Novelty Baskets, Both Signed (2 Total)
- 388 \_\_\_\_\_ #513 - Light Emerald 13" Draped Lady Figure Flower Holder (base chip)
- 389 \_\_\_\_\_ #3077 - Peach-Blo 12 oz. Ftd. Tumbler, Etched Cleo, Gold Trim (slight gold wear)
- 390 \_\_\_\_\_ #1018 - Topaz 7-1/2" Sugar Loaf Tray
- 391 \_\_\_\_\_ #3075/6 - Willow Blue 80 oz. Jug w/Cover, (small chip on spout)
- 392 \_\_\_\_\_ #29 - Amber, Forest Green & Crystal Mount Vernon 2-1/2 oz. Mustards & Covers, (3 Total)
- 393 \_\_\_\_\_ #7966 - Crystal 1 oz. Low Cordial, Cut Wedding Rings
- 394 \_\_\_\_\_ #85 - Helio 10" Ftd. Vase, Etched #619, Gold Encrusted (some trim wear)
- 395 \_\_\_\_\_ #221 - Crystal Pristine 8-1/2" 3-Compt Bowl, Etched Rose Point
- 396 \_\_\_\_\_ #50 - Ebony 9-1/2" Ftd. Bowl
- 397 \_\_\_\_\_ #1095 - Light Emerald 3-Piece Sugar & Cream Set, Lightning Bolt Hlds., Ebony Tray
- 398 \_\_\_\_\_ #2760 - Crystal Near Cut Daisy 11" Celery Tray (chips)
- 399 \_\_\_\_\_ #3400/116 - Royal Blue 14 oz. Mugs, Crystal Hld. (4)
- 400 \_\_\_\_\_ #41 - Amber Everglade 7" Comport
- 401 \_\_\_\_\_ #3105 - Crystal Cordial, Pressed Rose Point
- 402 \_\_\_\_\_ SS46 - Crown Tuscan Sea Shell 7-1/2" Flower Holder, Paper Label
- 403 \_\_\_\_\_ #532 - Crystal Pristine 6" Tall Comport, Etched American Beauty, Gold Encrusted





# A Look Back In Time Part II by Mark Nye

## Woman's Club Lecture Builds New Business

### Cambridge Glass Co. -- Stern Brothers Conduct Cooperative Lecture – Table Setting Meeting Before Edgewater, N.J. Woman's Club. Sales Increase Noted.

“As a distinctly forward step to the education of the general buying public to an appreciation of china and glass as a part of the home, Cambridge Glass Company, through their New York representative, Oliver C. Graham, and in cooperation with Stern Bros. Department Store in New York – with china and glass buyer George Minard and his assistant John J. Gleason, Jr., conducted a lecture and table setting instruction before the Edgewater Woman's Club, September 20, at the Edgewater Public Library, New Jersey.

The lectures, dealing in general with the appreciation of glassware followed a regular business meeting of the Woman's Club at 8 P. M. Mr. Graham opened with a most interesting talk on the technical processes of the manufacture of glass, bringing in, also, its qualities of duty and its possibilities as decorative merchandise. Mr. Minard spoke on the merchandise available, in general, in this country today and pointed out the stylistic advantages of current merchandise and brought out the whole merchandising point of the very effective tie-up between Cambridge Glass Company and Stern Bros.

Mr. Gleason spoke chiefly on style, on the hundred and one possibilities for table arrangements, and pointed out to the audience of 150 enthusiastic women the wide realm of attractive tables possible in their own homes.

The whole lecture, which proved to be an exceptionally effective merchandising scheme and, according to reports which followed, a great impetus to business in Stern Bros. department, was prompted and arranged by Mrs. Thomas C. Smith, of the Edgewater Woman's Club, which conducts periodic lectures of interest to women, in cooperation with Mr. Graham of the Cambridge Glass Company and Mr. Minard and Mr. Gleason.

Stores throughout the country have often given lectures either in the department or in some section of the store accompanied by table settings, etc., but it has been found that the smartest merchandising stunt, and the most frequently proven and strongest impetus to immediately increased sales, has been lectures and instructive talks on available merchandise before women's clubs, which at least partially sponsor them.

The table settings featured at the lecture carried Cambridge glassware exclusively, and included displays of all lines. The whole meeting consumed only an hour and a half and the lectures were carefully timed and planned to avoid dryness or any of the over-dose of technical information which so often spoils such meetings and invalidates their real purpose.

Royal Doulton china was used in the formal settings which accompanied the lecture. The tables were not set entirely with glass, since the idea was to explain to the women present the etiquette of complete formal tables. The meeting before the Edgewater Club drew an exceptionally large audience and it proved profitable to Stern Bros. since 150 women were reminded of the values available at that store and were at the same time educated on the fine points of fine quality glassware such as Cambridge. The need has long been felt in the china and glass industry for frequent consumer education on the values of china and glass.”

The preceding was a feature article in the October 1935 issue of Crockery And Glass Journal.

## Cambridge Glass Co. Wins Two Prizes for Table Settings at State Fair

“One of the big features of the Illinois State Fair held at Springfield, ILL., was an exhibit of table settings. These were changed during the fair and the Cambridge Glass Company took first prizes for tables with their glass.

One was a Golden Wedding setting using Cambridge's Gold Rose Point. A ruby glass service plate set off the crystal. And the silverware was washed in gold, also the Rose Point Pattern. Yellow roses were used in the console bowl with their leaved gilded.

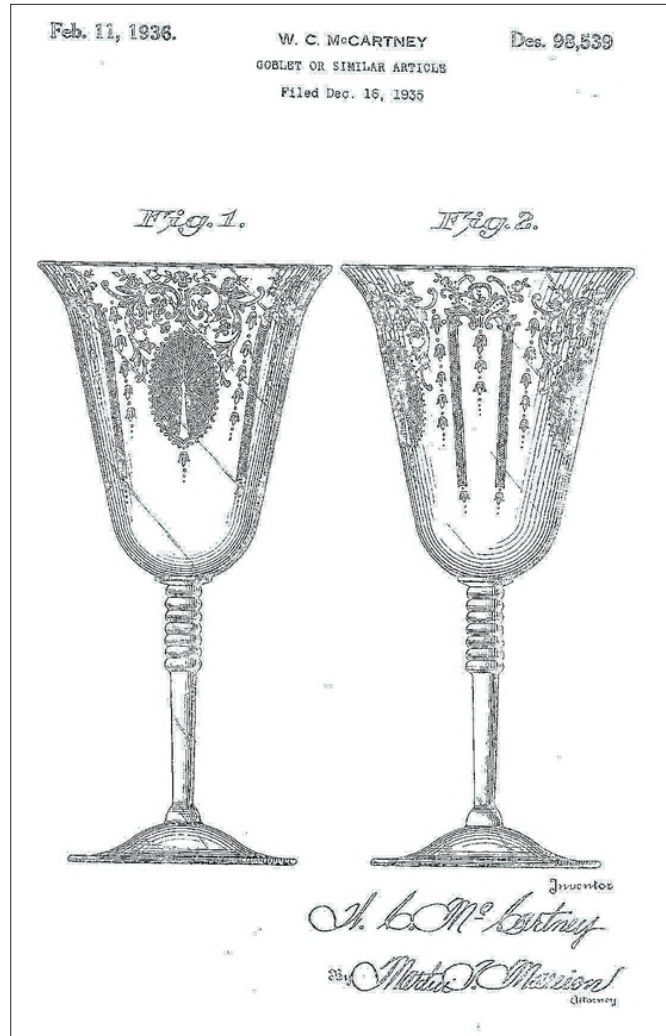
The other was a Bridal Luncheon table set for four. The glassware and the console were Cambridge's Lily of the Valley pattern with the frosted stems. The candlesticks were also of the matching pattern. Under the crystal plates were service plates of green glass and this green and white was repeated in the Lily of the Valley blossoms and leaves in the centerpiece. Green and white mints filled the comports. At each place was a place card of a bride in her bridal veil and a small cup attached with green and white candies.” Crockery And Glass Journal October 1935

## A Look Back In Time Part II- continued

### “Candlelight” - Another Hit

“By special permission of The Towle Silversmiths, Newburyport, Mass., we have created a new deep plate etching on a new shape to be offered with their famous and nationally advertised sterling silver. It will pay you to keep a place in your stock for this wonderful line which will be presented to you as soon as completed. (Patent applied for) The Cambridge Glass Company, Cambridge, Ohio USA A Nation-Wide Sales Force at Your Service.” From a Cambridge advertisement in the December 1935 issue of Crockery and Glass Journal.

Author’s Note: It is not precisely clear what is meant by “a new shape” but probably refers to the stemware line 3114 which appeared along with the etching in the patent illustration. A copy of that illustration accompanies this article.



# National Cambridge Collectors, Inc.

## November 2011 Quarterly Meeting

President David Ray called the November 2011 Quarterly Meeting of the National Cambridge Collectors, Inc. to order on Saturday November 6, 2010 at 7:00 pm. The meeting was held in the meeting room at Theo's Restaurant, Cambridge, OH, with over 80 members in attendance.

Larry Everett moved (second Jeannie Moore) to waive the reading the June 2011 Quarterly Minutes. After hearing no requests for corrections, the minutes of the June 2011 Quarterly Meeting, as printed in the September 2011 issue of the Crystal Ball, were approved.

**Treasurer's Report** – Mike Strebler reported the Annual Fund has done well this year, and exceeded the budget. Mike presented a motion to the Board that will result in a transfer of \$25K from unrestricted funds to the endowment fund at the end of the year.

Committee reports:

**Member Services** – Frank Wollenhaupt reported that stories are always needed for the Crystal Ball. Frank wants people share their ideas and experiences, and get involved by responding to queries and requests for help.

**Convention** – Nancy Finley and Julie Buffenbarger have begun working the schedule and events for the 2012 convention. Nancy suggested that members donate baskets for the silent auction. The baskets could be based on a state theme, or anything related to the convention theme, "A Hunting We Will Go." As in the past, people will be able to show their creativity by providing the center piece for a Friday night table.

**Auction** – Jack Thompson presented the current status of the 2012 benefit auction. 51 consignors, instead the usual 40 consignors, proposed 900 lots, which has been pared down to 400 lots. Items are due this weekend, and the auction committee will verify everything within a couple of weeks. The list will appear in the January 2012 Crystal Ball. It should be an outstanding auction.

**Publicity** – Frank Wollenhaupt has show cards, and will coordinate distribution. Contact him if you need any copies for distribution in your area.

**Programs** – Greg Vass thanked everyone for attending this evening's program on Rose Point and people who helped with tonight's preparations. The program is being recorded by Dave Rankin. Details will be posted later on the NCC website about purchasing a recording of tonight's program. The Board authorized the purchase of microphones and speaker equipment to support recording events and other NCC events. Greg is open to feedback and suggestions for future programs.

**Museum** – Cindy Arent expressed thanks to the museum docents;

Betty, Sandy, and Sally, for an outstanding job at the museum, which is now closed for the season. November and December are expected to be busy with numerous tour buses scheduled. Volunteers to help are always appreciated.

**Facilities** – Carl Beynon reported the roof has been repaired, and appears to have solved the nagging leak problem from the past five years. The repair includes a new 5 ton unit, and drain, and everything is working great.

**New Business:**

**Bylaws** – Rick Jones explained a proposed modification to the bylaws to change the voting and the timing of nominations and annual fund mailing. The Board approved the changes in August, and were printed in the October 2011 Crystal Ball. Rick Jones moved to accept the By-Laws revision (second Mark Nye). Approved.

**Nominating** – Rick Jones reported on behalf of the nominating committee. Three Board members have terms expiring in 2012: Cindy Arent, Helen Klemko and Mark Nye. Helen has declined to seek re-election. The nominating committee offered a slate of five names to the members: Cindy Arent, Larry Everett, Millie Loucks, Mark Nye and Jack Thompson. No further nominations were offered from the floor. Rick Jones moved to accept the slate of candidates (second Jim Finley). Approved.

**Standards Committee** – Sharon Miller reported the committee has completed the requirements for sections "1) Mission, Vision, and Governance" as well as "6) Management", and will be submitting the materials to the American Association for State and Local History for certification at the gold level in the Standards and Excellence Program for History Organizations.

Upon hearing no further old or new business, Larry Everett moved to adjourn, (second by Frank Wollenhaupt). The meeting was adjourned to prepare for the Rose Point program and show & tell.

Meeting adjourned at 7:25 pm  
Respectfully submitted, Freeman Moore

# *Looking Glass Productions* *Presents*

**January 21-22, 2012 – Sat 10-5/Sun 11-4**

Cartersville Looking Glass Show/Sale  
Cartersville Civic Center  
435 S. Main Street  
Cartersville, GA (exit 288 off I-75)  
Admission \$5.00 – good for both days

\*\*\*\*\*

**February 11-12, 2012 – Sat 9-5/Sun 10-4**

San Antonio Looking Glass Show/Sale  
Live Oak Civic Center  
8101 Pat Booker Road  
Live Oak, (San Antonio) TX (exit 172 off I-35)  
Admission \$6.00 – good for both days

\*\*\*\*\*

**March 10-11, 2011 – Sat 10-5/Sun 11-4**

71<sup>st</sup> Metroplex Looking Glass Show/Sale  
Grapevine Convention Center  
1209 S. Main Street  
Grapevine, TX (3 miles NW of DFW Airport)  
Admission \$6.00 – good for both days

\*\*\*\*\*

**For more information contact:  
Pam or Fred Meyer (972)672-6213  
Or visit**

**[www.meyershows.com](http://www.meyershows.com) for discount coupon**

# NCC Books for Sale

**Published by NCC • Members receive a 10% discount**

TITLE		REGULAR PRICE	MEMBER PRICE
<b>1910 NearCut Catalog Reprint</b>	108 pages, paperback, no price guide	\$14.95	<b>\$13.45</b>
<b>1927-29 Catalog Reprint</b>	66 pages, paperback, no price guide, includes identification guide	\$9.95	<b>\$8.95</b>
<b>1930-34 Catalog Reprint</b>	250 pages, paperback with 2000 price guide	\$14.95	<b>\$13.45</b>
<b>1930-34 Catalog Index</b>	Index for above	\$2.00	<b>\$1.80</b>
<b>1949-53 Catalog Reprint</b>	300 pages, paperback, no price guide	\$19.95	<b>\$17.95</b>
<b>Cambridge Colors II (New)</b>	Hardcover with price guide	\$19.99	<b>\$17.99</b>
<b>Caprice</b>	200 pages, paperback, no price guide	\$19.95	<b>\$17.95</b>
<b>Decorates</b>	136 pages, paperback, no price guide	\$14.95	<b>\$13.45</b>
<b>Etchings (2nd Edition)</b>	102 pages, paperback, no price guide	\$17.95	<b>\$16.15</b>
<b>Etchings, Non-Catalogued</b>	70 pages, paperback, no price guide	\$12.95	<b>\$11.65</b>
<b>Etchings: Blossomtime</b>	26 pages, paperback, no price guide	\$7.95	<b>\$7.15</b>
<b>Etchings: Candlelight</b>	30 pages, paperback, no price guide	\$7.95	<b>\$7.15</b>
<b>Etchings: Chantilly</b>	44 pages, paperback, no price guide	\$7.95	<b>\$7.15</b>
<b>Etchings: Diane</b>	53 pages, paperback, no price guide	\$7.95	<b>\$7.15</b>
<b>Etchings: Elaine</b>	64 pages, paperback, no price guide	\$9.95	<b>\$8.95</b>
<b>Etchings: Portia</b>	57 pages, paperback, no price guide	\$7.95	<b>\$7.15</b>
<b>Etchings: Wildflower</b>	42 pages, paperback, no price guide	\$7.95	<b>\$7.15</b>
<b>Rock Crystal Engravings</b>	119 pages, paperback, no price guide	\$17.95	<b>\$16.15</b>
<b>Rock Crystal Engravings (Listings)</b>	Companion to above; lists all pieces in all patterns	\$9.95	<b>\$8.95</b>
<b>Rock Crystal 1940 Illustrated Catalog &amp; Price List</b>		\$14.95	<b>\$13.45</b>
<b>Rose Point - Second Edition</b>	146 pages, paperback, no price guide	\$19.95	<b>\$17.95</b>
<b>Pharmaceutical Catalog No.8 1915-1920 Reprint</b>	68 pages, paperback, no price guide	\$9.95	<b>\$8.95</b>

### How to Order by Mail or from the NCC Website

Send orders to:  
NCC • PO Box 416 • Cambridge, OH 43725

OHIO RESIDENTS PLEASE ADD 7% SALES TAX

Please include your name, complete mailing address and your phone number or e-mail address.

Payments by check or Money Order only, payable to NCC.

Books may also be purchased on the NCC website, [www.cambridgeglass.org](http://www.cambridgeglass.org). Major Credit Cards are only accepted for web purchases.

### SHIPPING/HANDLING:

All items (including books) except Scottys:	
<b>Total order up to \$6</b>	<b>\$3.50</b>
<b>\$6.01 to \$25.00</b>	<b>\$6.50</b>
<b>\$25.01 to \$50.00</b>	<b>\$7.50</b>
<b>\$50.01 to \$75.00</b>	<b>\$8.50</b>
<b>Over \$75.00</b>	<b>\$11.50</b>



South Florida Depression Glass Club  
American Glass, Pottery, Dinnerware  
Show and Sale

February 11 & 12, 2012  
Sat. 10am-5pm & Sun. 10am-4pm

Emma Lou Olson Civic Center  
1801 NE 6th St • Pompano Beach, FL



**FREE  
PARKING**

Admission: \$6.50  
(50¢ off with this ad)  
Info: [www.SFDGC.com](http://www.SFDGC.com)

Directions: corner of NE 6th St.  
and NE 18 Ave., off Rt. 1,  
just north of Atlantic Blvd.



Designs of the Past That Dazzle Today!

# NCC Events

2012 NCC Auction  
Saturday, March 3, 2012  
\*\*\*\*\*

2012 Convention  
June 20-24, 2012

*If you know about any upcoming glass shows or other glass events, please pass the word on to us at least six to eight weeks before the show dates. These listings are free of charge.*



**2012 Glass Sale & Show** 40<sup>th</sup> Year  
Sponsored by The 20-30-40 Glass Society of Illinois  
Visit our website at: [www.20-30-40society.org](http://www.20-30-40society.org)  
Specializing in: *Depression, Elegant, Carnival, Pattern, Art Glass, Victorian, & Contemporary Glassware*  
Saturday, March 10<sup>th</sup>, 2012 - 10am to 5pm  
Sunday, March 11<sup>th</sup>, 2012 - 11am to 4pm  
Door Prizes ♦ Crystal Repair ♦ Glass Identification ♦ Reference Library  
Admission: \$8.00 per Person / \$7.00 with this card  
Location: THE CONCORD PLAZA MIDWEST CONFERENCE CENTER  
401 West Lake Street, Northlake, IL 60164  
Free parking and shuttle bus to front door  
For information, call 630-851-4504

## DEALER DIRECTORY

Joanne & Janine Bender  
Specializing in Depression Era Glassware  
We Buy & Sell

PO Box 1007  
Pebble Beach, CA 93953

831-647-9957 [jjdbender@aol.com](mailto:jjdbender@aol.com)  
831-647-9949 [www.benderglass.com](http://www.benderglass.com)

**J & L Treasures**  
Specializing in Depression Glass  
Heisey, Cambridge, Fostoria, Morgantown,  
Tiffin, etc.

Linda Kilburn  
PO Box 1257  
Burlington, CT 06013

860-673-4088 (Answering machine - leave message)

**Ohio Valley Antique Mall**  
7285 Dixie Highway (Route 4)  
Fairfield, OH 45014  
Cincinnati's Largest Multi-Dealer Antique Mall  
Hours: DAILY 9:00 a.m. - 9:00 p.m.

513-874-7855  
[www.ohiovalleyantiquemall.com](http://www.ohiovalleyantiquemall.com)  
[cfaxon@ohiovalleyantiques.com](mailto:cfaxon@ohiovalleyantiques.com)

## Glass Shows

**January 21-22, 2012**

Cartersville Looking Glass Show & Sale  
Cartersville, GA  
Call: 972-672-6213  
More Info: [meyerantiques@juno.com](mailto:meyerantiques@juno.com)  
[www.meyershows.com](http://www.meyershows.com)

**January 28-29, 2012**

Sanlando DG Show & Sale  
Sanford, FL  
Call: 407-298-3355  
More Info: [allisonglassworks.com/millie.html](http://allisonglassworks.com/millie.html)

**February 11-12, 2012**

San Antonio Looking Glass Show  
San Antonio, TX  
Call: 972-672-6213  
More Info: [meyerantiques@juno.com](mailto:meyerantiques@juno.com)  
[www.meyershows.com](http://www.meyershows.com)

**February 17-19, 2012**

Houston DG Show  
Rosenberg, TX  
Call: 713-410-4780  
More Info: [mmxglass@aol.com](mailto:mmxglass@aol.com)

**February 25-26, 2012**

Arkansas Glasshoppers DG Show & Sale  
Little Rock, AR  
Call: (501)868-4969  
More Info: [bgmarglass@sbcglobal.net](mailto:bgmarglass@sbcglobal.net) or [rpnsc@aol.com](mailto:rpnsc@aol.com)

**February 25, 2012**

Green River Glass Show & Sale  
Kent, Washington  
Call: 253-852-5250  
More Info: [kayswede@msn.com](mailto:kayswede@msn.com)

**March 10-11, 2012**

Metroplex Glass Show & Sale  
Grapevine, TX  
Call: 972-672-6213  
More Info: [meyerantiques@juno.com](mailto:meyerantiques@juno.com)  
[www.meyershows.com](http://www.meyershows.com)

**March 10-11, 2012**

20-30-40's Society DG Show & Sale  
Northlake, Ill  
Call: 630-851-4504  
More Info: [20-30-40society.org](http://20-30-40society.org)

**March 16-17, 2012**

Heart of America DG & Pottery Show  
Independence, MO  
Call: 816-308-7495  
Email: [hoagc@juno.com](mailto:hoagc@juno.com)  
More Info: [www.hoagc.org](http://www.hoagc.org)

# DEALER DIRECTORY

**Dealer Directory - \$24 for 12-months, size limited by box (see below). Includes listing on NCC website.**

## Advertising Rates:

1/8 page \$15    1/4 page \$20  
1/2 page \$30    Full page \$50  
(plus \$5 per photograph)

Electronic submissions should be emailed to:

[ncccrystalball@charter.net](mailto:ncccrystalball@charter.net)

Use Word. Mailed submissions and all payments should go to PO Box 416, Cambridge, OH 43725. Deadline is 10th of preceding month. Ads must be paid in advance. Show listings are FREE; send info to PO Box or e-mail address 60 days before event.

### ALADDIN LAMP BOOKS

Aladdin Electric Lamps  
SB, 229 pp., \$24.95 to C.Collectors PP.  
J.W. "Bill" Courter  
brtknight@aol.com  
550 Pioneer Ln. Phone 270-488-2116  
Calvert City, KY 42029

### Max Miller

Elegant Glassware • Books • Fiesta  
...and more  
THE MARKET PLACE  
(713) 467-0450 - BUS 10910 OLD KATY RD.  
(713) 461-1708 - RES HOUSTON TX 77043  
MMXGLASS@aol.com

### Cheshire Cat Antiques

Specializing in elegant depression to mid-century era glass and vintage kitchen glass.

Francee Boches > 305-884-0335  
fboches@cheshirecatantiques.com

Pull up a Mouse!  
Shop 24 hrs a day at  
[cheshirecatantiques.com](http://cheshirecatantiques.com)



### BAKER FAMILY MUSEUM

805 CUMBERLAND ST.  
CALDWELL, OHIO 43724  
740-732-6410

[bakermuseumnellbaker@msn.com](mailto:bakermuseumnellbaker@msn.com)

Wed & Thurs 9-4; Fri - Sat 9-5

## Classified Ads - Reach over 1,000 avid collectors of Cambridge Glass

### CRYSTAL LADY

1817 Vinton St. Omaha, NE 68108  
Bill, Joann and Marcie Hagerty  
Shop 402-341-0643 Home 402-391-6730

Specializing in Elegant Glass & Collectibles  
[www.crystalladyantiques.com](http://www.crystalladyantiques.com)

Glen & Carolyn Robinson  
White Rose Antiques  
Specializing in Depression Era Glassware

2454 McFarland Road  
York, SC 29745

803-684-5685  
[gandcrobinson@aol.com](mailto:gandcrobinson@aol.com)  
[whiteroseglassware.com](http://whiteroseglassware.com)

### CRYSTALLINE COLORS

Cambridge • Fostoria • Elegant Glass  
Penny Court Mall, Cambridge - 2 booths  
Riverfront Antique Mall  
New Philadelphia, OH (I-77, exit 81)  
Booth #'s 626 and 616

Lynne R. Franks 216-661-7382

### GLASS FROM THE PAST

Maureen Gillis



[www.glassfromthepast1.com](http://www.glassfromthepast1.com)  
email: [glassfromthepast1@comcast.net](mailto:glassfromthepast1@comcast.net)

### Cherished Collectibles

Shopping 24 hours in our online store  
Glassware, Figurines, Collectors' Plates

[www.cherishedcollectibles.com](http://www.cherishedcollectibles.com)  
Elegant and Depression Era Glass

### TWEAK COLLECTIBLES

Specializing in Elegant Glass  
BUY & SELL  
WANTED: CAMBRIDGE TURKEYS  
417-742-3653  
[btummons@aol.com](mailto:btummons@aol.com)

### VIRTUALATTIC AT THE GLASS CHALET

SPECIALIZING IN ELEGANT DEPRESSION ERA GLASS  
Sandra L. Bridwell-Walker PO Box 3448  
William P. Walker Cleburne TX 76033-3448  
Phone: 817-202-0940 [www.virtualattic.com](http://www.virtualattic.com)  
Sandy's Cell: 817-559-0328 [virtualattic@sbcglobal.net](mailto:virtualattic@sbcglobal.net)  
theglasschalet@sbcglobal.net  
Bill's Cell: 817-357-7084

### Daugherty's Antiques Jerry and Shirley Antiques & Collectibles-Mostly Glass

[www.daughertys-antiques.com](http://www.daughertys-antiques.com)  
email: [sdaugh2515@daughertys-antiques.com](mailto:sdaugh2515@daughertys-antiques.com)

Shows & Mail Orders 2515 Cheshire North  
402-423-7426 (evenings) Lincoln, NE 68512

### THE GLASS HOUSE ANTIQUE MALL Furniture, Pottery, Glass Antiques and Collectibles I-70 Exit 146, East on SR 40

8825 E. Pike  
Norwich OH 43767 TEL 740-872-3799

### Milbra's Crystal Buy & Sell

Replacement and Matching  
Milbra Long (817) 645-6066  
Emily Seate (817) 294-9837  
PO Box 784  
Cleburne TX 76033

Specializing in  
Cambridge  
Fostoria, Heisey  
and others

E-mail: [longseat@sbcglobal.net](mailto:longseat@sbcglobal.net)  
[www.fostoriacrystal.com](http://www.fostoriacrystal.com)

### ISAACS ANTIQUES

(740) 826-4015

See our booths in Penny Court Mall in  
Cambridge and at White Pillars Antique Mall  
(Route 40, one mile west of  
I-70 Norwich, OH • Exit #164)

### The American Bell Association International, Inc.

7210 Bellbrook Drive  
San Antonio, TX 78227-1002  
[www.americanbell.org](http://www.americanbell.org)



### MARGARET LANE ANTIQUES

2 E. Main St. New Concord, OH 43762  
Lynn Welker (740) 826-7414

Cambridge Glass Matching Service  
Hours: Mon-Fri 10-12 AM, 1-5 PM  
or by appointment

### Our House Antiques



Linda and David Adams  
Las Vegas, NV  
1-800-357-7169

[www.OurHouseAntiques.com](http://www.OurHouseAntiques.com)  
email: [David@OurHouseAntiques.com](mailto:David@OurHouseAntiques.com)

National Cambridge Collectors, Inc.  
PO Box 416  
Cambridge OH 43725

website: [www.cambridgeglass.org](http://www.cambridgeglass.org)  
e-mail: [ncccrystalball@charter.net](mailto:ncccrystalball@charter.net)

## Friends of Cambridge – Annual Fund

NCC exists through member giving using an Annual Fund system to raise operating funds and to ensure the preservation of Cambridge glass for future enthusiasts. The Annual Fund uses a common member "renewal" date and NCC sends out Annual Fund materials to everyone once a year during March/April. There are no monthly reminders or monthly renewal dates. The Annual Fund is NCC's primary means of support and all Annual Fund gift recognition levels are per household and include membership for all adults within the household. Additionally, each household will receive a subscription to the Crystal Ball newsletter, unlimited admissions to the museum, and rights to vote in elections for the Board of Directors. Multiple households at the same address are welcomed. NCC is a 501C(3) organization and Annual Fund gifts are allowed as a tax deduction under Section 170 of the Internal Revenue Code.

### Levels of Membership

Patron	\$35
Benefactor - Century	\$100
Benefactor - Mardi Gras	\$200
Benefactor - Japonica	\$500
President's Circle	\$1,000

President's Circle includes Convention registration for two members in the household and one copy of any new NCC publications.

## *The National Museum of Cambridge Glass*

Located at 136 S. 9th Street  
in downtown Cambridge,  
Ohio

**Closed for the  
season  
see you in April**

