

Cambridge



Crystal Ball

Published monthly by National Cambridge Collectors, Inc.
to encourage and report the discovery of the elegant and boundless product of the
Cambridge Glass Company of Cambridge, Ohio

Issue No. 372

April, 2004

See Crystal Ball photos on-line, in full color at www.crystalballphotos.org (password on page 5)

Annual Auction Draws Big Crowd Nearly 400 Lots of Spectacular Cambridge Glass

by Lorraine Weinman

Whenever you attend the NCC Annual Benefit Auction you see an enthusiastic gathering of people who appreciate fine glass. The excitement level is high from the moment you enter the room. Over 200 such people crowded the auction room at the Pritchard Laughlin Civic Center in Cambridge, Ohio. Prior to the auction you could hear conversations building about specific items but everyone seemed to have their eyes set on something special. People moved back and forth checking out the glass that soon would be going "home" in many directions. Many cities and states were represented from across the country. In anticipation of winning their prized pieces, some soon-to-be bidders were collecting boxes and paper, preparing to wrap and safely protect the glass of their successful bids.

This year's auction was a major success. The crowd was large, the glass was superb, and it was a fundraising success story for the NCC Museum. Total sales exceeded \$51,000 - an all-time record! Thanks to the hard work of Squeek and Dorothy Rieker, Lynn Welker, and others who assisted them, the auction went well. The hours and hours of work that these people volunteered is most certainly appreciated.

Once again, auctioneer Craig Connelly, his associate John Kennard, and Lynn Connelly of Granville, Ohio, deserve credit for helping to make the day run smoothly. Through



One of 390 lots of beautiful Cambridge Glass up for bids at the 2004 NCC Benefit Auction

their humorous and entertaining approach, they make the time go quickly while still achieving top dollar for each item.

Prior to the beginning of the auction, the Cambridge Cordials Study Group held a 50/50 fundraising raffle. The winner was Barbara Wyrick of Columbus, Ohio.

During the day, 390 lots of Cambridge glassware were sold. The quality was way up this year. There was a particularly nice representation of colors in the auction

continued on page 19

2004 Auction Results on Page 5

Take the President's Challenge • see page 17

National Cambridge Collectors, Inc.

PO Box 416
Cambridge, OH 43725-0416

Please notify us immediately of any address change.

Contacts:

President Rick Jones	(914) 631-1656
Secretary Larry Everett	(937) 675-6491
Crystal Ball Editor Alex Citron	(434) 296-2531
NCC Museum (phone)	(740) 432-4245
(fax)	(740) 439-9223

Membership

Membership is available for individuals at \$20.00 per year, and an additional \$3.00 for associate members (12 years of age and older, residing in the same household). All members have voting rights, but only one issue of The Crystal Ball will be mailed to each member household.

Multi-year memberships are available:
2 years for \$38.00; 3 years for \$56.00.

2003-2004

OFFICERS AND COMMITTEE CHAIRS

President	Richard D. Jones
Vice-President	Tarzan Deel, Jr.
Secretary	Larry Everett
Treasurer	Dennis Snyder
Sergeant-at-Arms	Charles Upton

Acquisitions	Lynn Welker
Archives	Mark A. Nye
Budget & Finance	Mike Strebler
By-Laws	Alex Citron
Crystal Ball	Alex Citron
Endowment	George Stamper
Facilities	Carl Beynon
	Joe Miller
	Sharon Miller
Grants & Fundraising	Doug Ingraham
Long-Range Planning	George Stamper
Member Services	Ken Filippini
Membership - Chairman	Jeff Ross
Membership - Operations	Linda Atkins
	Freeman Moore
Membership - Development	Cindy Arent
Museum	Richard D. Jones
Nominating	David Ray
Program	Bill Hagerty
Projects	Mark A. Nye
Publications	Lorraine Weinman
Publicity	Judy Rhoads
Study Group Advisor	Linda Roberts
Technology/Webmaster	Dorothy Rieker
2004 Auction	Squeek Rieker
	Lynn Welker
	Shelley Cole
2004 Convention	Mary Beth Hackett
2004 Glass Show & Sale	Joy McFadden
	Larry Everett
	Susan Everett
2004 Glass Dash	

Board of Directors:

Cindy Arent; Tarzan Deel, Jr.; Larry Everett;
Ken Filippini; Rick Jones; Sharon Miller;
Dennis Snyder; George Stamper; Mike Strebler;
Charles Upton; Lorraine Weinman; Lynn Welker

Cambridge Crystal Ball

The official publication of National Cambridge Collectors, Inc., a non-profit corporation with tax-exempt status. Published monthly for the benefit of its members. All rights reserved; reproduction in whole or part without written permission of National Cambridge Collectors, Inc., and the author is prohibited.

Executive Editor
Research Editor
Advertising Manager
Circulation

Alex P. Citron
Les Hansen
Jeannie Moore
Sharon & Joe Miller

Advertising Rates

Display Advertising (camera-ready):

Full Page	\$50.00
3/4 Page	\$40.00
1/2 Page	\$30.00
1/4 Page	\$20.00
1/8 Page	\$15.00

(Add \$5.00 for each photograph)

Classified Advertising:

10 cents per word; \$2.00 minimum
(Abbreviations and initials count as words)

Dealer Directory:

\$24.00 for twelve-month contract
Text limited by standard box size (see page 23)
Includes FREE listing on NCC website

- Payment in full must be received before advertising will be run.
- Cambridge Crystal Ball and National Cambridge Collectors, Inc., assumes no responsibility for items advertised and will not be responsible for errors in price, description or other information.
- Advertising copy may be submitted to us by e-mail or regular mail as follows:

Ad copy may be sent by e-mail to NCCcrystalball@aol.com, and must be sent by the 10th of the month preceding publication. Ad will not be run until your check has been received at our PO Box.

Ad copy may be sent by regular mail, along with your check, to our PO Box. Copy sent this way must arrive at our PO Box by the 1st of the month preceding publication.

Submissions to

The Crystal Ball

By mail: P.O. Box 416 Cambridge, OH 43725

E-mail: NCCcrystalball@aol.com

(This E-mail address is for newsletter business, inquiries and submissions only)

Deadlines:

Ad copy by e-mail: 10th of preceding month
Ad copy by regular mail: 1st of preceding month
Articles, study group reports, etc: 10th of preceding month

MEMBERS ONLY

Visit the "Members Only" section of the NCC's website at cambridgeglass.org/NCCmembers

Features available only to NCC Members include:

Reprints of Research Articles

Minutes of Board Meetings

User name: NCC

Password: TriangleC



President's Message:

Progress Through Generosity

For the umpteenth time, let me say how a volunteer organization like ours could not accomplish what we have without the generosity of our members and friends. Rarely, have we had a demonstration of this like we have this month at our annual benefit glass auction.

The gross total of our auction sales topped \$50,000 for the first time ever as far as I know. Traditionally, the sale has a gross of \$38-42M, so this is truly remarkable. I don't yet (as of this writing) have the "net of proceeds" to the club, but I am very confident it will set an all time record.

The club receives a 20% commission of all gross revenue (an agreement we have with anyone who consigns to the auction) less the auctioneer's fees and our promotion fees (PLCC rent, ad expenses, et al). Also, Craig (our longstanding auctioneer) does not take commission on items that are 100% donations to the museum.

An event like this depends on great consignments and active bidders. We had both this year and all of our thanks to those of you who consigned such great merchandise and to those of you who bid on these items. Your generosity toward the club is very much appreciated. And without the hard work of Dorothy and Squeek Rieker and Lynn Welker, there would be no auction. Another outstanding job!

Most any mission-driven non-profit like ours has to depend on special fund-raising to meet their goals. Rarely do membership fees cover the extent of the organization's financial goals. NCC is no exception.

Leading me to write this particular column this month was a question

one of our Board members asked at the Board Meeting. The inquiry was something along these lines - "how long could we afford to stay in business if we didn't have special fund raising?" This is a good question and one I've heard before. The answer is repeatedly - "not very long."

As I pondered where we are, and where we are going, as an organization, I also took a step back. How far have we come as an organization? The answer is amazingly ... VERY FAR.

Think about it ... we bought a \$325,000 building to house a museum. We have spent well over \$100,000 to renovate, furnish and outfit it as an operating museum. And, at the same time over this roughly five year period, we have established an Endowment Fund that is now worth over \$30,000.

Plus, we raised nearly three quarters of what will be required to replace the museum's roof (an expense that was anticipated in the ten year financial model that helped shape our acquisition decision).

With all that, we have a "debt" as expressed in our mortgage that is only in the area of \$65,000. Everything else is free and clear (with apologies to Dennis Snyder if I'm using the wrong language!).

This is really a remarkable accomplishment when you think about it. It is a real testament to the generosity of so many who have permitted us to achieve this level of progress and have a relative small amount of debt - a number which we also want to get RID OF as soon as we can.

The need to do special fund raising has been fundamental to this whole process. Whether it has been the generosity of Depression Glass clubs, the showcase naming gifts, the room naming gifts, the Scottie Dog sales, the Century Club or any of the scores of other initiatives - all has added up to help us accomplish so much.

And, proudly, the work goes on. We are announcing that the Century Club will now be entering its third year. Your \$100 membership in the club will be again directed two-thirds to the roof and one-third to the Endowment Fund. We think we have a good chance of paying for the roof in its entirety as a result of this program. And remember, for those who prefer to support the Endowment Fund 100%, a directed gift specifically to Endowment can and should be made.

Additionally, through the efforts once again of Bill Hagerty, we will do installment three of our Scottie Dog program. We are hoping to raise \$15-20,000 that will be directed toward reducing the mortgage. This is a cornerstone program for NCC and we would not be where we are without it. Our thanks to Bill!!!

Well that's my answer to that Board member's question. We need special promotions to help meet our operating needs. But through the wonderful generosity of our members, community and friends, we have been able to accomplish so much. Progress through generosity, it's a wonderful thing.

People & Places:

NCC Members Contribute to San Antonio Show

by Kent Washburn

Early on the morning of February 14th, all the major highways of the San Antonio metropolitan area were closed due to snow and ice. Yet as the sun began to shine and the snow began to melt, a line formed at the entrance of the Live Oak Civic Center. The Mayor of Live Oak, Henry Edwards, Jr., welcomed the assembled glass collectors to the semi-annual Washburn San Antonio Show and Sale.

The mayor presented Live Oak pins to NCC members Jim & Nancy Finley and John Peterson, special guests of the show. With South Carolina's Steve and Helen Klemko at the head of the line, the doors opened, and another great glass show began.

Jeannie & Freeman Moore, NCC members from Flower Mound, TX, were Cambridge hosts for the show, manning a table of books and some delicious candy treats! They shared winning smiles and a wealth of helpful information with the crowd of collectors, once again proving to be a valuable asset of NCC.

The Finleys erected a 37-foot long display of their fabulous Cambridge

Swans - even more impressive than their display at last June's NCC Convention (if such a thing is even possible). Jim & Nancy's rare Milk Glass Swan Punchbowl served as the display's centerpiece, surrounded by the full range of styles, sizes and colors of Cambridge Swans. Their accompanying presentation was very well received, and solved the mystery of how to measure a swan. Jim is a natural public speaker, and could probably sell anyone the Brooklyn Bridge.

John Peterson, of Elkhart, IN, assisted the Finleys and also shared his detailed knowledge of rare and unusual Cambridge Glass.

Nearly every dealer at the show was offering at least a bit of Cambridge

Glass. David & Linda Adams, of Las Vegas, had a Nude Cigarette Box in frosted crystal, with a jasmine cutting (which apparently changed hands a few times during the weekend). Other dealers had gold-encrusted Rosepoint on Carmen pieces, a Windsor Flying Lady Bowl and several unusual pieces of Caprice.

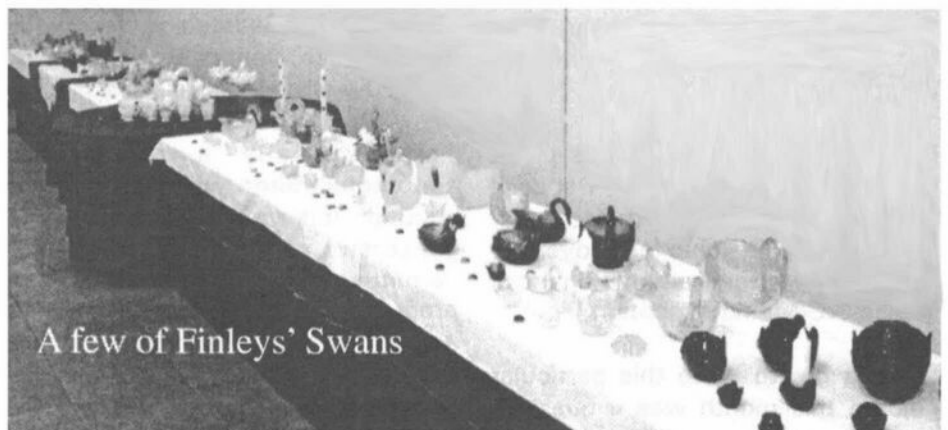
As always, Cambridge Glass and the members of the NCC were valuable parts of the San Antonio show. I'm delighted to have so many enthusiastic and knowledgeable Cambridge collectors participating in this show.

The tradition will continue in September, when NCC's Doug Ingraham, of Minneapolis, will conduct seminars on Rosepoint, plus display some of his fabulous colored Rosepoint pieces. This will be a rare opportunity to see examples from this marvelous, personal collection.

Mark your calendars now for September 18 and 19. See you there!



*The NCC's contingent at the recent San Antonio show:
Front: Nancy Finley, Jeannie Moore, Freeman Moore.
Rear: Jim Finley, Doug Ingraham, Randy Johnson, John Peterson.*




**THE CAT'S MEOW
NCC MUSEUM COLLECTIBLES**
for sale by the Elegant Glass
Collectors Study Group
\$20 each... plus \$5 shipping
Please contact Bill Dufft at
(610) 777-3869 or
billnvon@aol.com

2004 Auction Results

1	40.00	49	70.00	97	275.00	145	50.00	193	70.00	241	115.00
2	57.00	50	130.00	98	25.00	146	75.00	194	50.00	242	25.00
3	40.00	51	65.00	99	105.00	147	300.00	195	200.00	243	25.00
4	45.00	52	85.00	100	50.00	148	80.00	196	25.00	244	160.00
5	20.00	53	50.00	101	25.00	149	425.00	197	100.00	245	55.00
6	85.00	54	260.00	102	25.00	150	45.00	198	210.00	246	65.00
7	48.00	55	90.00	103	300.00	151	45.00	199	35.00	247	75.00
8	45.00	56	105.00	104	150.00	152	140.00	200	95.00	248	525.00
9	80.00	57	70.00	105	20.00	153	5.00	201	60.00	249	95.00
10	75.00	58	250.00	106	40.00	154	55.00	202	60.00	250	85.00
11	45.00	59	65.00	107	40.00	155	160.00	203	80.00	251	105.00
12	30.00	60	40.00	108	110.00	156	50.00	204	275.00	252	50.00
13	80.00	61	70.00	109	60.00	157	75.00	205	200.00	253	55.00
14	35.00	62	225.00	110	30.00	158	200.00	206	65.00	254	100.00
15	85.00	63	85.00	111	35.00	159	85.00	207	30.00	255	2700.00
16	45.00	64	35.00	112	60.00	160	200.00	208	55.00	256	70.00
17	20.00	65	65.00	113	50.00	161	200.00	209	265.00	257	50.00
18	55.00	66	170.00	114	55.00	162	45.00	210	175.00	258	55.00
19	45.00	67	180.00	115	145.00	163	17.50	211	70.00	259	85.00
20	40.00	68	75.00	116	65.00	164	200.00	212	30.00	260	35.00
21	50.00	69	155.00	117	70.00	165	65.00	213	15.00	261	170.00
22	190.00	70	20.00	118	80.00	166	10.00	214	275.00	262	380.00
23	25.00	71	35.00	119	55.00	167	900.00	215	90.00	263	160.00
24	60.00	72	125.00	120	130.00	168	65.00	216	25.00	264	20.00
25	115.00	73	60.00	121	175.00	169	75.00	217	75.00	265	300.00
26	45.00	74	45.00	122	45.00	170	260.00	218	40.00	266	30.00
27	70.00	75	55.00	123	35.00	171	95.00	219	225.00	267	20.00
28	225.00	76	135.00	124	15.00	172	35.00	220	310.00	268	65.00
29	100.00	77	20.00	125	190.00	173	75.00	221	390.00	269	100.00
30	155.00	78	55.00	126	160.00	174	65.00	222	50.00	270	125.00
31	225.00	79	15.00	127	195.00	175	125.00	223	17.50	271	45.00
32	25.00	80	20.00	128	85.00	176	45.00	224	60.00	272	650.00
33	190.00	81	65.00	129	110.00	177	65.00	225	145.00	273	45.00
34	45.00	82	75.00	130	35.00	178	75.00	226	60.00	274	130.00
35	30.00	83	105.00	131	300.00	179	250.00	227	75.00	275	25.00
36	70.00	84	85.00	132	105.00	180	55.00	228	30.00	276	145.00
37	50.00	85	45.00	133	25.00	181	55.00	229	155.00	277	225.00
38	55.00	86	90.00	134	25.00	182	80.00	230	80.00	278	35.00
39	25.00	87	22.50	135	80.00	183	110.00	231	275.00	279	70.00
40	1650.00	88	80.00	136	20.00	184	55.00	232	45.00	280	20.00
41	80.00	89	27.50	137	35.00	185	65.00	233	30.00	281	90.00
42	65.00	90	25.00	138	320.00	186	100.00	234	150.00	282	40.00
43	190.00	91	140.00	139	10.00	187	90.00	235	275.00	283	85.00
44	525.00	92	20.00	140	285.00	188	175.00	236	75.00	284	500.00
45	12.50	93	270.00	141	90.00	189	105.00	237	105.00	285	85.00
46	30.00	94	155.00	142	200.00	190	150.00	238	50.00	286	420.00
47	355.00	95	300.00	143	210.00	191	280.00	239	75.00	287	75.00
48	40.00	96	70.00	144	45.00	192	150.00	240	140.00	288	180.00

>>> *continued on page 7*

Photos on-line in full color at:
www.crystalballphotos.org
password: daffodil



**Announcing the next
comemerative reissue from
the NCC...
The Cobalt Scotties**

**Available at the Convention
in June 2004**

**Pre-Order now for only \$90 per pair (save \$10)
Shipping is \$10, or pick them up at convention and save even more**

*Order by June 1st at this special price... send \$90 to
NCC Cobalt Blue Scotties • PO Box 416 • Cambridge, OH 43725*

(include your name, address and phone #)

add \$10/pair for shipping, or let us know you'll pick them up at the Convention

**Now Open For
The Season**



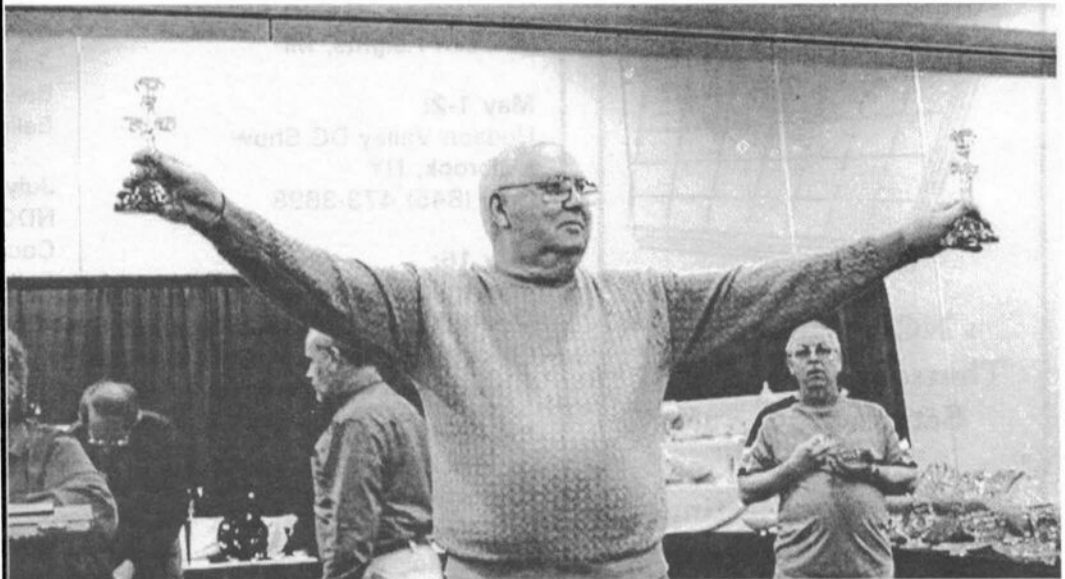
At the Auction:

Results (cont'd from page 5)

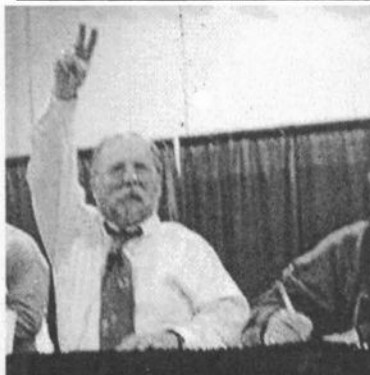
289	80.00	335	180.00	381	45.00
290	75.00	336	100.00	382	50.00
291	130.00	337	50.00	383	70.00
292	400.00	338	27.50	384	35.00
293	20.00	339	75.00	385	45.00
294	85.00	340	70.00	386	70.00
295	375.00	341	100.00	387	45.00
296	40.00	342	40.00	388	30.00
297	30.00	343	200.00	389	40.00
298	65.00	344	45.00	390	110.00
299	115.00	345	110.00		
300	45.00	346	80.00		
301	35.00	347	55.00		
302	25.00	348	150.00		
303	70.00	349	140.00		
304	1650.00	350	115.00		
305	90.00	351	30.00		
306	35.00	352	25.00		
307	70.00	353	110.00		
308	220.00	354	175.00		
309	20.00	355	475.00		
310	175.00	356	350.00		
311	60.00	357	135.00		
312	35.00	358	350.00		
313	70.00	359	75.00		
314	25.00	360	205.00		
315	45.00	361	40.00		
316	70.00	362	130.00		
317	75.00	363	75.00		
318	40.00	364	320.00		
319	305.00	365	85.00		
320	350.00	366	240.00		
321	1700.00	367	90.00		
322	80.00	368	130.00		
323	25.00	369	65.00		
324	65.00	370	55.00		
325	85.00	371	70.00		
326	87.50	372	25.00		
327	275.00	373	150.00		
328	90.00	374	85.00		
329	1000.00	375	115.00		
330	200.00	376	525.00		
331	260.00	377	135.00		
332	95.00	378	65.00		
333	65.00	379	65.00		
334	75.00	380	75.00		



In the midst of the action!



The correct way to show off Cambridge crucifixes

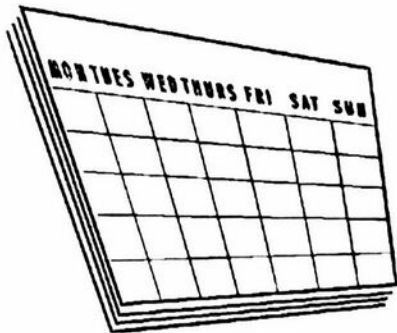


*Above: Ken Rhoads and a simple candlestick
Left: Jim Finley figures out a hurricane
Far Left: Auctioneer Craig Connelly keeps things going*

Events:

If you know about any upcoming glass shows or other glass events, please pass the word on to us at least six to eight weeks before the show dates. These listings are free of charge.

Mark Your Calendar



> NCC Convention
Thursday, June 24 thru
Saturday, June 26

> Quarterly Meeting
Saturday, August 16
Luncheon

> Quarterly Meeting
Saturday, November 6
Dinner & Program

Upcoming Glass Shows

April 24-25:
Rocky Mtn. DG Society Show
Castle Rock, CO
Call: (303) 699-0780

April 24-25:
Hossierland DG Show
Nobleville, IN
Call: (618) 259-5059
E-mail: tuckant@charter.net

April 24-25:
Great Lakes DG Club Show
Madison Heights, MI

May 1-2:
Hudson Valley DG Show
Millbrook, NY
Call: (845) 473-3898

May 16:
Toronto DG Show
Mississauga, ONTARIO
Call: (905) 846-2835
E-mail: walt@waltztime.com

June 3-6:
Imperial Glass Collectors Society
28th Annual Convention & Sale
St. Clairsville, OH
E-mail: info@nigcs.org

June 11-13:
Fostoria Glass Society
Convention & Sale
Moundsville, WV
Call: (304) 845-9188
E-mail: cj_glass@comcast.net

June 11-13:
Old Morgantown Glass Show
Morgantown, WV
Call: (724) 225-8445
Visit www.oldmorgantown.org

June 12-13:
Belleville DG & China Show
Belleville, IL

July 9-11:
NDGA Convention & Sale
Council Bluffs, IA
Call: (515) 963-9210
E-mail: jeff_wdms@earthlink.net

July 17-18:
Tennessee Fostoria Society
Elegant Glass Show & Sale
Nashville, TN
Call: (615) 360-3187
E-mail: fullerre@comcast.net

Freeman Moore wants us all to be sure and check out page 58 in the March issue of "This Old House" magazine. This intriguing mystery will be carefully investigated.

*Convention Registration Form
on Page 13
Register Early*

(you just might win this year's "Early Bird" prize)

Study Groups:

The NCC has several study groups; these are the groups currently active and holding regular meetings. Listed below is contact information for these study groups.

If there is no study group in your area and you are interested in starting or joining a new study group, please contact NCC Study Group Advisor Judy Rhoads at kjrhoads@aol.com.

- #13 - Miami Valley Study Club**
Miami Valley area, Ohio
Larry Everett
db0098@dragonbbs.com
(937) 675-6491

- #14 - The Cambridge Cordials**
Cambridge, Ohio
Lorraine Weinman
blweinman@hotmail.com
(330) 966-9376

- #15 - North Texas Cambridge Study Group**
Dallas area, Texas
Scott Pierce
scottpierce1@msn.com
(817) 427-9510

- #16 - Elegant Glass Collectors**
PA & NJ
Bill Dufft
billnvon@aol.com

- #17 - The Columbus Wildflowers**
Columbus, Ohio
Barbara Wyrick
bwyr@ee.net
(614) 291-0361

- #18 - The Cambridge Triangles**
VA, MD, DC
Alex Citron
NCCcrystalball@aol.com
(434) 296-2531

- #19 - NE Ohio Cambridge Collectors**
Akron-Canton area, OH
Hilda Pfouts
pfoutshi@aol.com

- #20 - South Florida Study Group**
Miami, FL
Linda Gilbert
rosepointbabe@aol.com

Study Group #14 The Cambridge Cordials

On Saturday, February 21, 2004, the Cambridge Cordials Study Group met at The National Museum of Cambridge Glass in order to have a work session. Those in attendance were: Linda Adkins, Cindy and Mike Arent, Rich Bennett, Carl and Shirley Beynon, Kay Marchant, Sharon Miller, Judy Momirov, Jill Ross, Mark Votaw, Lorraine Weinman, Lynn Welker and Mary Welker. John Corl and his sister, Debbie; Norma and Ron Hufford; Kay Mears; David Ray; Betty Sivard; Mike Strebler; Charles Upton; and Frank and Vicki Wollenhaupt were guests.

The Museum was a busy place. A lot was accomplished during the work session. Some of the work done: cleaned up the new education center after the construction, cleaned the three feature display rooms, new photos and prints were hung throughout the Museum, cleaned all restrooms, organized and put some finishing touches on the two feature display rooms, shelves and glass doors in the display cases were cleaned, dusted and wiped down all the cases to remove the dust from the new construction, painted doors and touched up other paint throughout the Museum, started to set up the new education center, moved the new mannequins into place, set up the auditorium in preparation for the tour guide group coming in on Monday, and cleaned the glass-making exhibit. Frank and Vicki Wollenhaupt and Ron and Norma Hufford set up the third feature display room with a wonderful assortment of decal ware pieces and smoker items. John Corl and his sister Debbie completed the changes in the Penny Court displays.

Everyone took a short break to enjoy the covered dish meal. There was so much food...and it was so delicious. This was a chance to visit and share stories since many had

been too busy to talk with all the work going on everywhere in the Museum. A little study group business was conducted informally as we continued to work. Sharon reported on the budget and a couple financial items were completed. It was decided that we would add another work session in March to get the Museum ready for this year's opening.

The next meeting is a work session at the Museum on Saturday, March 20, 2004. The April meeting will be at Linda Adkins' and will be a covered dish event. More will follow on the April meeting.

Study Group #13 Miami Valley Study Club

The meeting of February 10, 2004, was called to order by the presiding officer, Georgia Otten, at 7:00 p.m.

There were 8 members present.

There was a motion to dispense with the reading of the minutes as they had been mailed to each member.

The Treasurer reported no activity in the account during the past month.

OLD BUSINESS:

At last month's meeting, we discussed turning Cambridge labels into stickers for resale. Frank reports the NCC owns the copyright for the Cambridge label. We need only to request the right to use the label.

Our club will be presenting a program at convention. Several possible topics were discussed. Since so few members are present, this will be discussed at next month's meeting.

NEW BUSINESS:

Georgia is serving on the Nominating Committee for NCC. The committee

Study Groups:

Miami Valley (from page 9)

is currently seeking people to run for the Board. There are three seats up for election this year.

There being no further business, the meeting adjourned at 7:30 p.m.

SHOW AND TELL:

Cambridge Standard Graduate, 10 ml measure with original box; #3400/1903 relish tray with Rose Point etching; Opal soap dish; #2899 4" ebony flower frog; #42 Sea Shell crystal flower center with moonstone interior.

PROGRAM:

Frank Wollenhaupt presented a program on decanters.

Respectfully submitted,
Diane Gary,
Secretary Pro Tem

Study Group #17 The Columbus Wildflowers

On Thursday, March 11, 2004, the Wildflowers met at the home of Ken and Jackie Nicol at 7:00 pm. (We had postponed our first Thursday of the month meeting until after the annual NCC auction). Refreshments of Meatballs and Sauerkraut in a Cranberry Sauce, relish tray, and German chocolate cake and brownies were served.

Our meeting began with a program presented by Ken Nicol entitled "Who Made It?" Ken had 25 pieces of beautiful and unusual glass on display and a list of 25 glass manufacturers. The rest of us had time to look at each piece and try to determine who made it. It was a fascinating exercise in just how much there is to know about glass, and needless to say, no one was close to 100%. We then discussed the various pieces, a few of which

included a yellow glass Keg on an aluminum stand by Stevens & Williams of England; a blue Perfume Set on a tray (very close in color to Bluebell), made by New Martinsville Glass; a pink Beehive Decanter by Paden City; Black Horse Bookends by L.E. Smith; a lovely Comport with silver overlay by Fostoria; a pair of green Candlesticks with the same general feeling as Calla Lily by Morgantown; a Black Reclining Ballerina soap dish by Westmoreland (the marked ones are repro's - Westmoreland only made the dish in 1953 and never marked it); and we studied the difference in the controlled bubbles in Pairpoint versus Union Glass.

A "Sunset" color Comport where the color ran from yellow to red made by Co-Operative Flint is sometimes mistakenly sold as Cambridge Tomato.

We discussed that only 3 glass companies of that period made a

continued on page 16

**HUDSON VALLEY
DEPRESSION GLASS CLUB**
Presents
**A SPRING GLASS
EXTRAVAGANZA OF ALL
AMERICAN GLASS AND
POTTERY OF ALL AGES**

May 1 & 2, 2004
Saturday 11-6, Sunday 10-4
MILLBROOK FIREHOUSE,
Front Street, Route 44,
Millbrook, NY

FREE PARKING
Free Glass Identification • Refreshments
Door Prize and
Special Display
Admission \$4.00 With this Ad \$3.50

Info:
Diane Sewall (845) 473-3898
Judy Carroll (845) 883-5668

Visiting Cambridge? Stop by



The Area's Only Authentic Coffee Bar
A Great Place to Relax, Meet up with Friends,
and Enjoy a Treat Between Meetings or While
Shopping Downtown.

Located in The Potter Davis Shops, Cambridge's
New Downtown Mini-mall.

Cool Beans Coffee Bar
710 Wheeling Avenue ♦ Cambridge, Ohio
740-439-9339

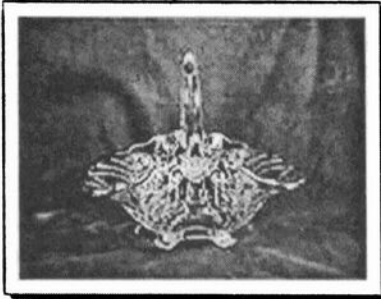


Free Parking Front and Rear ♦ Meeting Space Available
Owned by a Member of National Cambridge Collectors

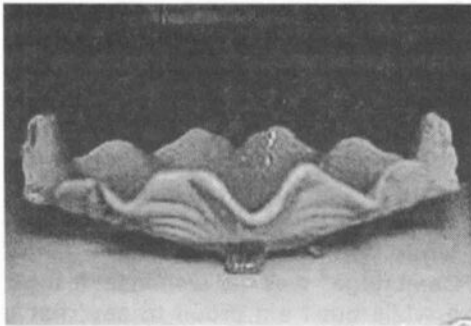
eBay Report:

Caprice:

- A crystal, handled basket, with a floral silver overlay, sold on February. 16 for \$1,000.



- A pair of Dark Emerald Green #1338 (tri-level) candlesticks sold on February 13 for \$209.
- A Moonlight Ice Bucket in near perfect condition (but no tongs) sold on March 11 for \$239.
- An extremely rare Violet Oval Bowl sold on March 7 for \$865.



Enamels:

- A 7 oz. Old Fashioned Tumbler with the enameled skier decoration sold on February 16 for \$383.



- A beautiful Ivory Perfume Atomizer, with an exquisite blue enamel and gold decoration (pictured at right), sold on March 13 for \$519.

Nudes:

- An Amber Ivy Ball sold on February 18 for \$207.
- A Windsor Blue Flying Lady Bowl sold on February 25 for \$2,700.
- A Royal Blue "true" Cordial did not meet the reserve. The high bid was \$385.

Everglade:

- A Forest Green Swan Bowl sold on February 26 for \$122.
- An Amber 2-lite Candlestick sold on March 4 for \$105.

Flower Frogs:

- An 8" Crown Tuscan Draped Lady sold on March 7 for \$1,585.



- A Light Emerald Cockatoo Flower Frog (hard-to-find) sold on March 7 for \$462.



Rosepoint:

- A very rare "tumble-up" Night Set sold on February 25 for \$1,077.
- A Crown Tuscan, two-handled cake platter, gold-encrusted, sold on February 29 for \$261.
- A #3400 four-footed Carmen bowl, gold-encrusted, did not meet the reserve. The high bid was \$1,125.
- An 80 oz #3400 Ball Jug, gold-encrusted Rosepoint did not meet the reserve. The high bid was \$293.
- A nice Martha Hurricane etched Rosepoint sold on March 14 for \$225.

Other Etches:

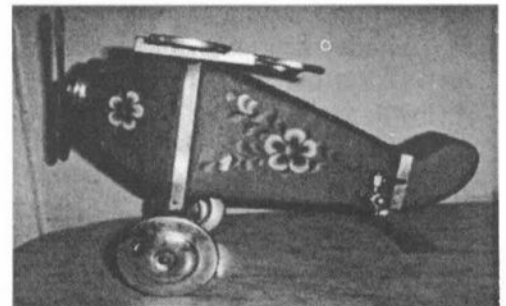
- A Cream & Sugar in Heatherbloom, etched Apple Blossom sold on February 28 for \$248.



- A #1408 Martini Pitcher, etched Diane, sold on February 29 for \$800.
- A #3500/16 Amber bowl, etched Elaine sold on March 8 for \$135.
- An unusual "1066 Covered candy, etched Elaine, sold on March 1 for \$110.
- A seldom seen Ram's Head Punch Set (with tray and cups), etched Minerva, sold on March 18 for \$1,136.

Miscellaneous:

- A very rare Airplane Decanter in blue with hand-painted flowers, sold on March 12 for \$2,475.



Convention Corner

"Somewhere Over the Rainbow"

by Shelley Cole, Convention Chairman

Registration Time Is Here! You'll find the registration form on the facing page. Please note that the deadline for registrations is JUNE 1. In an effort to encourage timely registrations and to help cover the added costs of late registrants, we've implemented a late charge on registrations postmarked after June 1. Please get those registrations in on time!

We've also made it easy to make a donation to NCC. You'll find a line on the registration form for a donation. If you just never remember to sit down and write that check, here's your chance to take care of it all at once. Let us know if you'd like it earmarked for something in particular – Roof Fund, Century Club, Endowment, Museum Acquisitions, etc.

The schedule of events is on page 15 of this issue – be sure to take a look at all of the events that are going on. We have the return of the Picnic on Wednesday evening for those attendees in town at that point and the Program on Candelabra and Dutch Treat dinner on Thursday at Theo's Restaurant. At our quarterly meeting in March a show of hands told us that there were many people interested in taking a field trip to the National Imperial Glass Museum in Bellaire, Ohio, so we'll gather in the parking lot at our museum at 10:00 on Thursday morning and head on over. After our tour of the Imperial Museum, we'll stop for lunch in St. Clairsville, then return to Cambridge in time for registration at the museum and the Candelabra Program.

For those of you who notice that we've combined the times for the

Glass ID and Bring & Brag, don't panic. I know many people like having those events separated. Here's what we'll do – we'll have the ID items on one set of tables and Bring and Brag at another set of tables – that way we do one group first and then the other, but we don't have that 20-30 minute down time between the two. Lynn Welker will be back with us again to do the honors.

And once again, the Cordials Study group will host the annual Cambridge Factory Workers' Reunion at the museum on Sunday afternoon. If you can stay over the extra day, this is an event not to be missed.

We could still use some help during convention. If you can donate an hour or two, please let me know. My phone number is (434) 296-2531. Or e-mail me at slcunicorn@aol.com. But most importantly, get those registration flooding the USPS!!

See you in JUNE!



A Cambridge Glass Love Story

by James Cook

I met Donna in the spring of 2002. I knew, after the first date, I spent the afternoon with the woman I was going to marry although it took me nearly two years to pop the question.

Donna has many passions, one of her biggest is collecting depression glassware, especially Cambridge glass. It didn't take long for this passion to rub off on me. I remember the first time she showed me her collection and the way her eyes lit up as she proceeded to describe the patterns, shapes, colors and dates of production. I was truly impressed by the beauty of the glass as well as her knowledge of it.

In the months that followed I joined her in visiting yard sales, antique shops and auctions looking for the next addition to her collection. In the beginning I was clueless! I would see a piece that I thought resembled something from her collection of Azurite Cambridge, (she loves the opaques), and I would ask "Is that what you collect?" ... "That's not Cambridge" was her response. It took a while but I am proud to say that I can spot a Cambridge compote from across the room of the most cluttered antique store or find a Rosepoint cup and saucer in the middle of a glass show booth filled with different maker's of pattern glass.

Our first Christmas together I got her a 10" Jade compote I found on-line. It was a color she did not have, a color we could collect together and we did. We added several more pieces over the next year. For our second Christmas I went to a December glass show in our area looking for a gift, I found the perfect one. On past visits to Donna's parent's, also depression glass collectors, she pointed out their Azurite Ram's Head console set with envy in her eyes. It was the "Holy Grail" of her opaque collection. Well, I found the Ram's Head in Jade, our color, at the

continued on page 18

Somewhere Over the Rainbow

NCC Convention 2004

Advance Registration Form

Please complete this form and return it no later than June 1, 2004. (Registrations postmarked after June 1 will incur a late charge). Make your check payable to National Cambridge Collectors, Inc. and mail it with your completed registration form to:

National Cambridge Collectors, Inc.
 Convention Registration
 P.O. Box 416
 Cambridge, OH 43725-0416

Each person registering for the convention must pay the registration fee of \$20.00 regardless of which events will be attended. The registration fee includes admission to the NCC Glass Show and Sale, all educational programs and entitles you to receive a Convention Booklet and Souvenir. Please register for all events you plan to attend, including those offered at no charge. For children under ten years old there is no registration fee. However, they will not receive the Convention Booklet or Souvenir.

Show dealers: If you are a member of NCC, Inc. and wish to participate in other convention activities, registration is \$15.00 (regular registration fee less show admission charge). The benefits are the same.

Please list each person registering separately. Names should be given as you wish them to appear on your name badge. Please provide your NCC, Inc. membership number. If registering for more than 4, please list additional members on a separate sheet.

If you would like to receive an email confirmation of receipt of this registration form, please give us your email address. **This is the only way we can provide confirmation of your registration.**

Name of Conventioneers (please print legibly)	Membership #	1 st Convention? (circle one)
_____	_____	Yes No
_____	_____	Yes No
_____	_____	Yes No
_____	_____	Yes No

Email address _____
 (for registration confirmation)

Phone Number (____) _____

over

NCC Convention 2004

Advance Registration Form

Page Two

ACTIVITY	FEE	NUMBER ATTENDING	Total
Registration (postmarked by June 1)	\$20.00	_____	\$ _____
Late Registration (postmarked after June 1)	\$30.00	_____	\$ _____
Dealer Registration	\$15.00	_____	\$ _____
Friday Evening Banquet	\$25.00	_____	\$ _____
Saturday Evening Dinner	\$15.00	_____	\$ _____
Optional Donation to NCC for _____ (i.e. roof fund, museum acquisitions, endowment, etc.)			\$ _____
		Total	\$ _____

There is a choice of entrée for the Friday Evening Banquet. Please indicate how many of each entrée you would like. (Please be sure that the number of entrée choices matches the number of conventioners registering.)

London Broil _____
Chicken Chesapeake _____

This entrée contains crab meat. If you are allergic, we can leave it off. Check here for no crab []

If you have special dietary needs, please let us know here and we will do our best to accommodate you.

ø ø ø ø ø ø ø ø ø ø

For Information and Planning Purposes Only

Please indicate how many will attend the following events:

Picnic, Wednesday Evening _____
Car Pool to Imperial Museum, Bellaire, OH, Thursday morning _____
Dutch Treat Dinner, Thursday evening, Theo's Restaurant _____

During Convention, where will you be staying?

- My own home []
- A friend's home []
- Holiday Inn []
- Comfort Inn []
- Best Western []
- Days Inn []
- Budget Host - Deer Creek []
- Amerihost []
- Travelodge []
- Salt Fork Lodge []
- Other Cambridge Motel []
- Bed & Breakfast []
- Motel Outside Cambridge []
- Other []

Major Field(s) of Cambridge Collecting:
(This information will appear in the Convention Packet.)

Convention 2004:

"Somewhere Over the Rainbow"

Schedule of Events

Wednesday, June 23

6:00 p.m. *Pool Side Picnic at the... Day's Inn, 2328 Southgate Parkway*

Thursday, June 24

10:00 a.m. *Field Trip to... National Imperial Glass Museum*
2:00 p.m. *Registration at the... National Museum of Cambridge Glass*
4:30 p.m. *Program: Candelabra (David Ray) Theo's Restaurant, 632 Wheeling Avenue*
5:30 p.m. *Dutch Treat Dinner Theo's Restaurant*

Friday, June 25

8:00 a.m. *Registration Pritchard Laughlin Civic Center, Galleria*
9:30 a.m. *Orientation Meeting Pritchard Laughlin, Conference Room*
11:00 a.m. *Joint Study Group Meeting Pritchard Laughlin, Conference Room*
2:00 p.m. *Opening of Show & Sale Pritchard Laughlin, Exhibit Hall*
2:00 p.m. *Silent Auction Bidding Pritchard Laughlin, Exhibit Hall*
6:00 p.m. *Closing of Show & Sale*
6:00 p.m. *President's Reception Pritchard Laughlin, Galleria*
6:30 p.m. *Banquet Pritchard Laughlin, Galleria*
8:00 p.m. *Annual Meeting Pritchard Laughlin, Auditorium*

Saturday, June 26

7:00 a.m. *Glass Dash, Early Bird Beech Grove Family Development Center*
8:30 a.m. *Glass Dash, General Admission Beech Grove Family Development Center*
11:00 a.m. *Closing of Glass Dash*
11:00 a.m. *Opening of Show & Sale Pritchard Laughlin, Exhibit Hall*
1:00 p.m. *Glass ID & Bring & Brag Pritchard Laughlin, Conference Room*
3:00 p.m. *Program: TBA (MVSC*) Pritchard Laughlin, Conference Room*
5:00 p.m. *Closing of Show & Sale*
6:30 p.m. *Cocktails Pritchard Laughlin, Galleria*
7:00 p.m. *Supper Pritchard Laughlin, Galleria*
8:00 p.m. *Convention Speaker, Howard Seufer Pritchard Laughlin, Conference Room*

Sunday, June 27

1:00 p.m. *Former Cambridge Glass Company National Museum of Cambridge Glass
Employee's Reunion*

Wildflowers (from page 10)

consistent Red color by using Selenium. Cambridge made the only transparent Red (Carmen), and the two others were both Opaques. One was by Northwood in 1924 - 25, where the slag effect goes from red to beige if you flip the item over and look at the bottom, and Fenton made Mandarin Red from 1924 - 31, where the slag effect goes from red to a black or maroon. We compared these pieces, and we all had a good time and learned a lot!

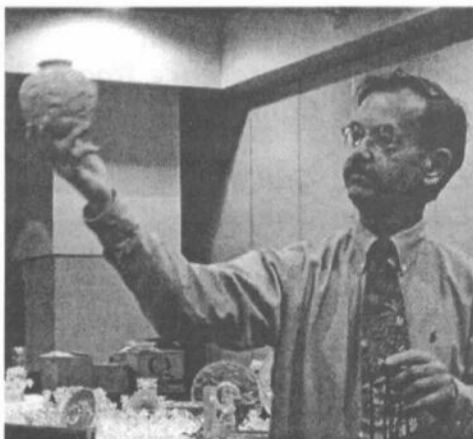
Next, we had a short business meeting where we had been asked to present a program at convention, and David Ray will be giving a program on Candleabra and Bobeches. We discussed some money making ideas, updated our member information, and talked about some recent ebay scams. Linda Roberts also passed out some reference materials she had photocopied for the group.

Our meeting ended with Show and Tell, which included items we had purchased at the NCC auction.

The meeting adjourned at 10:45 PM.

Our next meeting will be April 2nd at the home of David Ray with a topic of "Small Things." New members in the Columbus, Ohio area are always welcome and can contact either Linda Roberts at lrobert2@columbus.rr.com or Barbara Wyrick at bwyr@ee.net

—respectfully submitted
by Barbara Wyrick, Secretary



*Show & Tell at the March
Quarterly Meeting*

That Touch of Elegance

by Georgia G. Otten

I would ask that each of you sit down now and regress...one of my favorite pastimes! I would like you to consider times in your life when you wanted to do something really elegant and how the idea of "something elegant" can change over a period of time. I suppose this will be mostly directed at the lady readers but I certainly do not mean to imply that men cannot or do not think of things elegant! Some do, some don't. Generally speaking, most people understand elegance. Glass collectors surely do! Now go back in time a bit.....

You are somewhere in your twenties. You have your first apartment. Your first job is working out well and you have set aside some money for entertaining. Of course your apartment is small, your good table is the old one that you found in your aunt's basement, but it is clean and a nice tablecloth elevates its status to a "dining" table. Your guest will be the person in your life you would like most to impress. You have the dishes and the no-fail family recipe. You need that one touch of elegance to set the mood. The candlesticks! A nice pair of Cambridge No. 3, 10" Victorian candlesticks. Modest, but elegant.....they were Mother's and she was always so proud to use them and so are you. All is ready! No one will escape this evening without a feeling of elegance and importance!

Life has been good. You are now in your thirties. That first apartment and the aunt's table are only memories. You have a house with a real dining area! This calls for an invitation to your favorite couple to share the evening meal with you and that very special person who is still in your life! It even means you will be "dressing for dinner." A definite time to show off the good life you are experiencing. You now have a drop leaf dining room table and of course you have four matching

chairs. Perhaps you will use that wonderful damask tablecloth. You don't even mind ironing it. Your china is out and the table is set. The menu is planned in several courses but something is missing. Yes, that touch of elegance...the candlesticks! The dining area is still small but you have saved some hard-earned money and acquired a most elegant item to dress up your table. You have acquired a Cambridge No. 1358 3 Holder with bobeches and prisms! Oh those prisms.....absolutely dripping with elegance! The evening will simply be too gorgeous!

The twenties and thirties surely went by quickly. You are now in your forties and you still find entertaining in your home a special time for friends. Life has brought you more than expected and your new home boasts not only a large dining room but also you have a great room! So many opportunities. Your new dining room furniture is polished to perfection, four boards have been added to the table and there are eight upholstered chairs in place. The menu has been chosen, the food catered, and it will be served to your guests. All is ready.....oh yes....don't forget that touch of elegance! Your good fortune has allowed you to acquire many new pieces of Cambridge, for you are now a collector! What will grace your table this evening? How lovely for you and for your guests to enjoy the meal in the twinkling candlelight provided by a pair of #17 Cambridge Arms arrangements... complete with all bobeches and added peg vases for your choice of flowers! Wouldn't you consider that elegant?

The years go on, life styles become a bit more relaxed. Collecting Cambridge continues. Entertaining becomes a bit more casual. Friends carry in food to be shared by the group, or a pizza is ordered. You

The President's Challenge:

The 2004 NCC Convention Silent Auction

President Rick Jones has donated a piece of Cambridge Glass worth at least \$100 to the Silent Auction, and has raised a challenge to all NCC members to follow suit to make this year's Silent Auction the best on record.

Will YOU take the President's Challenge?



E-mail us and let us know what item you'd like to donate to the Silent Auction.

Donated items must be Cambridge Glass, Cambridge Glass factory, or Cambridge-associated ephemera, and be of at least \$25 value.

Only those items of \$100 or higher value will qualify the donor as a President's Challenge Contributor.

Auction proceeds will benefit National Cambridge Collectors, Inc.



Please send an email listing your donation(s) [indicate item/s and value/s] to:

slcunicorn@aol.com

- *Bring your donated item to the Registration Desk at the 2004 NCC Convention on Friday, June 25th between 8:00 a.m. – 1:00 p.m.*
- *Open bidding on auctioned items Friday afternoon at the Show & Sale*
 - *Winning bidders will be announced Friday evening, June 25th.*



President's Challenge Donations to date include:

Light Emerald Draped Lady Flower Frog from Rick & Cindy Jones

Nude Stem Cocktail, Amber/Crystal, from Alex Citron & Shelley Cole

Nude Stem Claret, Carmen/Crystal from Ken & Jane Filippini

Unusual "Shmoo" Salt & Pepper, etched Rosepoint from Doug Ingraham

Forest Green Rumpot Decanter w/Nautilus Stopper & Forman Bros. Chrome Holder
from Bill & Yvonne Dufft

Nominating Committee Report

by Rick Jones, 2004 Chairperson

What a fulfilling process we had this year as we worked to develop the slate that will be presented to the membership as this year's candidates for the Board of Directors. It was my privilege to step in as chairperson. This committee is usually chaired by our most immediate past President. That would have been Tarzan Deel but he excused himself as his was one of the Board seats available for election.

To assist in this process, Jeff Ross, Georgia Otten and Jeannie Moore agreed to serve on the committee and they surveyed the membership far and wide to create a slate of capable, experienced and interested members to make this four year commitment to the Board of Directors.

The seats up for re-election (we elect three each year for 4 year terms) were Cindy Arent, Tarzan Deel and George Stamper. Both Tarzan and George have elected to NOT run for reelection this year. This is one of the few times in recent memory that two incumbents did not seek reelection. Knowing that, we tried diligently to find a diverse group of new candidates – that could reflect our national population and bring needed diversity to the Board.

We were pleased to present a slate that has six candidates from FIVE different states:

Cindy Arent, Ohio
Shelley Cole, Virginia
Bill Dufft, Pennsylvania
Bob Gallagher, Michigan
Freeman Moore, Texas
Frank Wollenhaupt, Ohio

Cindy Arent is, of course, our current Museum Chairperson and has served on the Board for four terms.

Shelley Cole (Citron) is in her second year as Convention Chairperson and has helped found a new study group in the Virginia area as well as coordinated book sales and member promotion at Virginia and DC area shows.

Bill Dufft led an exception program last year at Convention and is one of the leading experts on Cambridge in Farber. He will be leading this year's Silent Auction at Convention.

Bob Gallagher is a noted RosePoint collector and a long-time supporter of NCC. He and his wife Karen were among the first to provide a Room Naming Gift for the museum.

Freeman is now serving as our Member Development Director and will be implementing our regional membership program. He heads our North Texas Study Group and helps promote NCC via book tables and displays at many glass shows.

Frank has the distinction of being one of the first thirty members of NCC and is one of only three (or is it five?) members to have never missed a convention. He is a most prolific researcher of Cambridge Glass and has led many of our November programs, Convention education seminars, as well being an active member of our Miami Valley Study Group.

The Board of Directors approved our recommended slate in its entirety. It was presented and approved at the Quarterly Meeting with the addition of Mark Nye who was nominated from the floor. So, a total of seven candidates will be on the ballot and their statements will appear in next month's Crystal Ball.

Love Story

(continued from page 13)

glass show. Needless to say she was overwhelmed by the gift and for me the find at the glass show was much more thrilling than the on-line purchase the previous year.

Early this year I told Donna I wanted to take her to Cambridge, Ohio for Valentine's Day. Having never been to her "Mecca", she was very excited about the trip. I had a very special day planned for her. The Cambridge Glass Museum was closed for the season at this time but I had contacted Cindy Arent and she was gracious enough to set up a private tour for us! We started out the day with a brief visit to the Heart of Ohio Antique mall on the way to Cambridge. We arrived at the museum at 1:00 and were greeted by Cindy and a friend. They were wonderful hosts. We were blessed with a guided tour of the museum by Lynn Welker, whose knowledge of Cambridge glass was truly incredible. We had an absolutely wonderful afternoon at the museum and Lynn even opened up his antique shop to let us look around. I reserved a room for us at Colonel Taylor's Inn Bed and Breakfast for that evening. After a nice dinner we headed back to our room.

That evening, in front of a warm fire, I serenaded her with a song I composed for her accompanied by my own novice guitar playing. I then got down on my knee and asked her to be my wife....she said yes!

On the way home we decided to finish looking around the Heart of Ohio mall, we found and purchased a beautiful Rosepoint etched, gold-encrusted, Crown Tuscan footed bowl. It was our first piece of Crown Tuscan, a new color for us to collect for years to come as husband and wife.

Our wedding will be in October and we plan to have our guest and buffet tables adorned with depression glass centerpieces from our collection.

2004 Auction (continued from page 1)

with a wide spectrum of colors. Anything in the auction that was decorated did very well. Nudes were very popular and brought some competitive bidding. Opaques seemed to be up this year as well. There were some nice Crystal Caprice pieces, with some rarities, that also did well. Prices ranged from \$15 to \$2700 per piece. This meant that new collectors had a good chance to start their collections and more advanced collectors were able to add unusual or rare pieces to their collections. Some noteworthy pieces

that sold were: a frosted nude claret w/Rockwell Sterling duck overlay, \$2700; an Amethyst nude hoch, \$1700; a Goldenrod Martha Washington 9½" flip bowl, \$525; a Crystal satin 2-piece canapé set w/ horse, rider and dog in red enamel, \$525; a #86 Royal Blue 8" footed cylinder vase w/Sterling Silver overlay, \$1000; a Primrose atomizer with gold and black enamel trim, \$650; a #518 Crown Tuscan 8½" Draped Lady figure flower holder, \$900.

The auction was kind to the absentee bidders as well. There were a number of items won by bidders who were not present and had placed bids prior to the auction. In fact, the largest item in the auction, the #29 Crystal satin Everglade 18" Buffalo Hunt Tray, which is hard to find, was successfully bid on by an absentee bidder.

Additionally, the NCC Museum added a rare #18 Tahoe Blue 10" Seashell bowl and an unusual, experimental Golden Opalescent 6¾" low footed comport to its collection. Both will be displayed in the Museum for all to enjoy.

If you were unable to attend the auction, the Annual Convention and Glass Show & Sale are just around the corner. June will be here before we know it! Mark your calendars now and plan to attend. Both events are located at the Pritchard Laughlin Civic Center in Cambridge, Ohio.

Hope to see you in June!

Cambridge Rock Crystal
Two new books available now!
Volume I: Illustrated Cuttings
Volume II: The Listings
Special member price for both
is \$25.10 plus \$4.00 Shipping
See Page 20 to order.

Elegance

cont'd from page 16

now find yourself in the great room rather than the old, formal dining room. But even there, it's still your Cambridge! Can't you just picture it? No matter the time, no matter the room, there is always a place for that touch of elegance! And the name "Cambridge" is synonymous with elegance!

MY VIEW/GUEST COLUMN

Cambridge through Elmira eyes

Cashew Nuts Eaters Anonymous could open its charter chapter in Cambridge, Ohio. The one-step plan: Avoid Kennedy's Bakery.

Of course, no one would attend the meetings. Why would you? Kennedy's is an institution in town — the local gathering spot for small talk, mega-chocolate brownies and those yummy cashews.

You can't stop at a handful. The buttery flavor subtly seduces you to eschew etiquette rules about sharing cashews.

The swarming tray that houses Kennedy's nuts should be considered a Community Reinvestment Area by the abatement-friendly Cambridge-Guernsey County Community Improvement Corp. It's definitely fueling the local economic appetite.

There's much to like about this region of southeast Ohio, snuggled in the foothills of the Appalachians about 100 miles from Pittsburgh. We were there recently to attend a glass collectors' auction and do the touristy thing.

The similarities between Elmira, N.Y., and Cambridge, Ohio, will make you go hama-hama.

They've had floods. We still talk about ours.

Their Kennedy's is our Light's.

Their Theo's is our Moretti's.

They've got interstates 70 and 77.

We've got routes 15 and 17.

They've got a Seneca Lake. So do we.

They've got meth labs in the news. And so do we.

The differences are quaint.

Cambridge's welcome sign isn't a \$40,000 homage to ghostly icons and Manhattanites. Their sign is square and painted brown, telling visitors that this is a Rotarian-friendly zone.



BILL CHURCH

In Cambridge, you can get a hotel room for \$39.99 a night if you're willing to take the steps to the fourth floor. (We opted instead to climb the lodge stairs at nearby Salt Fork State Park.)

Downtown is small, a bit worn, yet busy. Some buildings have been around since the turn of the last century, but many storefronts were tidy and opened for business. The one-way streets didn't seem to deter traffic, and parking lots were filled behind the stores and along busy Wheeling Avenue.

The county building is on the downtown drag, and easy-to-follow signs point the way. Visitors flock there since tourism brochures fill a large room near the entrance.

Staffers enthusiastically tell you how to get to the National Museum of Cambridge Glass or the Hopalong Cassidy Museum.

Yep, Cambridge has a famous son. William Boyd played the famous Hollywood cowboy. He's remembered through the museum and an annual festival. Locals call it the Hoppy Festival, and they take kindly to strangers who show up the first weekend each May.

The glass museum's entire exhibit

probably could fit comfortably into the lobby of the Corning Museum of Glass, but size doesn't matter. Members of the National Cambridge Collectors didn't have a Fortune 500 company to lean on when floodwaters nearly wrecked their museum in 1998. They regrouped, raised money and relocated to higher (and drier) ground.

The city has a population of 13,000, meaning it would take about 2.5 Cambridges to make one Elmira. But don't let numbers make this comparison.

There's more to Cambridge than those alluring cashews.

Their downtown business owners have figured out how to compete with the frenetic mix of national restaurants, strip shopping centers and concrete-and-glass motels that crowd around the interstates.

Their city-county bond seems strong. Folks had kind things to say about state government's efforts to help downtowns. And business owners weren't shy about sending visitors to other stores.

The similarities? Yeah, they exist. In fact, many positives. They have John Glenn's homesite just down the road. We have Eileen Collins in our backyard.

The differences? Human. Maybe it's more than quaint. All you need to do is look at all the signs.

(Bill Church is executive editor of the Star-Gazette in Elmira, N.Y. His wife collects Cambridge Glass and they attended the National Cambridge Collectors event here March 7. You can reach Bill by writing to him at the Star-Gazette, P.O. Box 285, Elmira, NY 14902, or sending e-mail to bchurch@stargazette.com)

This editorial appeared in the local Cambridge paper. It was written by a recent visitor to Cambridge, who has some nice things to say about the town and our museum. It's good to be appreciated.

The Marketplace:

VIDEOS

"The Crystal Lady" \$15.00

A video copy of an original Cambridge Glass Co. promotional film showing the making of a goblet in the Cambridge factory. 25 minutes, B&W.

NEW: Grand Opening Video \$15.00

A high-quality video record of the Grand Opening of The National Museum of Cambridge Glass. 25 minutes, Color.

SALT & PEPPER TOPS

Salt & Pepper Tops \$6.00 per pair
Polycarbon plastic, will fit most Cambridge shakers such as Rosepoint footed and flat-bottom shakers. Also fit Heisey Rose, Saturn, Plantation, Crystolite and some Orchid. Will fit some Anchor Hocking and Candlewick.

Order 10 or more pairs, pay only \$5 per pair

Books by Gene Florence

Very Rare Glassware (3rd Series)	\$24.95
Very Rare Glassware (5th Series)	\$24.95
Very Rare Glassware (6th Series)	\$24.95
Elegant Glassware (8th edition)	\$19.95
Glassware of the 40s-50s-60s (4th edition)	\$19.95
Glassware of the 40s-50s-60s (5th edition)	\$19.95
Stemware (Cordials) 1920s-1960s	\$24.95

CONVENTION FAVORS

1995 Cranberry Ice Cascade Goblet	\$5.00
1998 Yellow Iridized Cascade Goblet	\$5.00
2000 Carnival Mt. Vernon Juice	\$5.00
2001 Carnival Mt. Vernon Juice	\$5.00
2003 Bluebell Square Sugar/Cigarette	\$5.00

CONVENTION BOOKLETS

Convention Booklets \$5.00/year
• All NCC Conventions 1994 - 2003 •

**NCC Tote Bags
\$10.00**

SCOTTY DOGS

Red Scotty Dog Bookends are still available! \$100.00/pair
2000 fund raiser for NCC Museum; made in original Cambridge molds by Mosser. Marked NCC 2000.

NCC LOGO PINS

Show your pride in being a Cambridge collector and a member of NCC.

Only \$5.00 includes shipping



Ordering Information

NCC Members get a 10% discount on all books so listed on page 17. There are no discounts on any other items.

SHIPPING & HANDLING RATES:

First item	\$3.00
Each additional item	\$1.00

SPECIAL SHIPPING:

- Scottie Dogs: \$10/pair for shipping
- Salt/Pepper Tops: \$3 shipping for any size order
- Jadite Tumblers: \$3 each, \$10 for a set of six
- Logo Pins: shipping included in price

OHIO RESIDENTS:

PLEASE ADD 7.5% SALES TAX

Payments by check or money order only.

Send orders to:

NATIONAL CAMBRIDGE COLLECTORS, INC.
PO BOX 416
CAMBRIDGE, OH 43725

*Be sure to include your complete shipping address and phone number.
Thanks!*

Crystal Ball

Table of Contents for
The Crystal Ball

Issues #69 - #320
(Jan 1979 - Dec 1999)

Only \$2.00

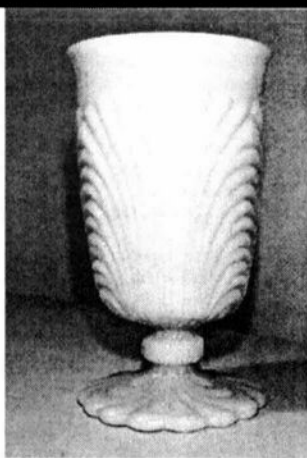
Back Issues of
The Crystal Ball

Sold by the year:

1999 • 2000 • 2001 • 2002

\$5.00 per year

Jadite Tumblers



\$20 each; set of 6 for \$100

plus shipping charges of \$3 each or \$10 for the set of 6

Made for the NCC by Mosser Glass
Marked on the bottom: NCC 2002

The Marketplace:

Books for Sale

FOR ORDERING INFORMATION, SEE FACING PAGE

NCC Members receive a 10% discount on the following books:

1910 Near Cut	108-page reprint of the 1910 Catalog Paperback with price guide	\$14.95
1930-34 Catalog	250-page reprint of 1930 thru 1934 Catalogs Paperback with price guide	\$14.95
1930-34 Index	for above	\$2.00
1949-53 Catalog	300-page reprint of 1949 thru 1953 Catalogs Paperback with price guide	\$14.95
1956-58 Catalog	160-page reprint of 1956 thru 1958 Catalogs Paperback (no price guide)	\$12.95
Caprice	200 pages; lists colors, decorations, reproductions, etc. Paperback with price guide	\$19.95
Colors in Cambridge Glass	128 pages including 60 color plates; fully indexed Hard-cover with price guide	\$19.95
Decorates	136-page Paperback (no price guide)	\$14.95
Etchings, Volume 1	by Miami Valley Study Group; 84 pages Paperback (no price guide)	\$14.95
Etchings, Non-Catalogued	70-page Paperback (no price guide)	\$12.95
Etching: Blossom Time	26-page Paperback (no price guide)	\$7.95
Etching: Candlelight	30-page Paperback (no price guide)	\$7.95
Etching: Chantilly	44-page Paperback (no price guide)	\$7.95
Etching: Diane	53-page Paperback (no price guide)	\$7.95
Etching: Elaine	64-page Paperback (no price guide)	\$9.95
Etching: Portia	57-page Paperback (no price guide)	\$7.95
Etching: Wildflower	42-page Paperback (no price guide)	\$7.95
Rock Crystal Engravings	94-page Paperback (no price guide)	\$14.95
Rosepoint	by Mark Nye; a comprehensive guide to Rosepoint Showing all blanks plus history of the line. 94 pages; Paperback with price guide	\$14.95
Rosepoint Price Guide	Values as of 2000 (<i>This is included with the Rosepoint Book listed above. Price is for the price guide when purchased separately</i>)	\$5.00

The following books do not offer any discounts:

NEW! The Glass Candlestick Book	by Tom Felt and Elaine & Rich Stoer Volume I: Candlesticks from Akro Agate thru Fenton Hardback, 254 pages, full color.	\$24.95
Charleton Decorations	by Michael & Lori Palmer; a comprehensive guide to Charleton; full-color. Hard-cover (no price guide)	\$29.95
1903 Catalog	106-page reprint by Harold & Judy Bennett Paperback (no price guide)	\$5.00
1927-29 Catalog	66-page reprint by Bill & Phyllis Smith Paperback with price guide	\$9.95
1940 Catalog	250-page reprint of the largest Cambridge Catalog (<i>loose 3-hole punched pages</i>) No price guide	\$25.00
1940 Catalog Binder	for above; with Cambridge logo on front	\$5.00
Reflections	by the Degenhart Paperweight & Glass Museum A history of Guernsey County glass production. 45-page Paperback	\$5.00
Stemware	by Mark Nye; shows all Cambridge stemware lines 167 page Paperback (no price guide)	\$19.95
Universal Dinnerware	by Timothy J. Smith. Includes Cambridge Art Pottery, Guernsey earthenware, Oxford Pottery and more. 176 pages, color, Paperback	\$29.95
Welker - Volume I	by Lynn & Mary Welker; reprints from several Cambridge Catalogs. 120 pages, Paperback (no price guide)	\$10.00
Welker - Volume II	by Lynn & Mary Welker; 15 color plates showing choice Pieces from their vast collection	\$5.95



Stems Without Thorns

As the world's largest supplier of old & new china, crystal, silver and collectibles, Replacements, Ltd. has more than 700 different patterns of Cambridge crystal.

And however much we enjoy selling pieces that were once thought irreplaceable, we love buying them as well. Thanks to people like you, our crystal inventory currently numbers in the hundreds of thousands, and the numbers keep growing every year.

So, if you've been unsuccessfully searching for that elusive piece of Cambridge — or any other type of fine crystal — call us for a free list of pieces available in your pattern. And, if you're looking to sell pieces you currently have, we can help you there, too.

REPLACEMENTS, LTD.
China, Crystal & Silver • Old & New

1-800-REPLACE
(1-800-737-5223)

1089 Knox Road,
PO Box 26029, Dept. CB,
Greensboro, NC 27420
www.replacements.com

Wanted:

Looking to purchase Cambridge "Candlelight" etched glass, as well as related Candlelight items (ads, brochures, etc.) Also interested in any information regarding the Candlelight pattern.

Contact:
depglas4me@msn.com

FIND GLASS HERE... a "Wants" ad like this costs less than \$3, and reaches over 1,000 Cambridge collectors. You may locate that one elusive piece, or fill out a set!

For Sale:

Gold Crystal Appleblossom Nut Cups;
10 @ \$65, or best offer
FREE SHIPPING
Carol Koerner 3939 Genesee Ct.
Boise, ID 83709 (208) 362-1066

SELL YOUR GLASS HERE... an ad like this costs just \$2, and reaches over 1,000 Cambridge collectors.

DEALER DIRECTORY

THE GLASS URN

456 West Main Street, suite G
Mesa, AZ 85201 480-833-2702
480-838-5936

Mail Order Shows Open Shop

CAMBRIDGE, FOSTORIA, HEISEY, etc.

THE DEGENHART PAPERWEIGHT AND GLASS MUSEUM, INC.

P.O. Box 186
Cambridge, OH 43725-0186

Intersection of US 22 & I-77
Phone 740-432-2626

GREEN ACRES FARM

2678 Hazelton Etna Rd.
Pataskala, OH 43062
(State Route 310 North)

Sat & Sun 1-7 pm 740-927-1882
Antiques, Crystal Glass & Collectibles

YOUR AD COULD BE HERE
ADVERTISE YOUR SHOP OR SERVICE
JUST \$24 A YEAR
SEE INSIDE FRONT COVER FOR DETAILS

GLASS FROM THE PAST

Maureen Gillis



www.cyberattic.com/~glassfrompast/
email: tomopartners@snet.net
tel: 860-526-3413

ALADDIN LAMP BOOKS

Free History of Aladdin Lamps
Figurine Lamps Wanted
Bill & Treva Courter

3935 Kelfey Rd. Kevil, KY 42053
Phone 270-488-2116 FAX 270-488-2055

Fostoria Glass Society of America

Traveling Ambassadors
Ralph & Joyce Rider

For info: 817-545-5856
E-mail: r.rider@sbcglobal.net

YOUR AD COULD BE HERE
ADVERTISE YOUR SHOP OR SERVICE
JUST \$24 A YEAR
SEE INSIDE FRONT COVER FOR DETAILS

Remember the Century Club in 2004

DEALER DIRECTORY

When writing to these dealers, please enclose SASE

DAUGHERTY'S ANTIQUES
Jerry and Shirley
Antiques and Collectibles • Mostly Glass

www.daughertys-antiques.com
e-mail: sdaugh2515@daughertys-antiques.com

Shows & Mail Orders 2515 Cheshire North
(402) 423-7426 evenings Lincoln NE 68512

Milbra's Crystal Buy & Sell
Replacement and Matching Specilizing in
Cambridge,
Milbra Long (817) 645-6066 Fostoria, Heisy
Emily Seate (817) 294-9837 and others.
PO Box 784
Cleburne TX 76033
E-mail: longseat@sbcglobal.net
www.fostoriacrystal.com

BARNESVILLE ANTIQUE MALL
open 7 days, 8 - 5
Roger, Nancy and Brian Mayhugh
Owners
202 N. Chestnut St. 740-425-2435
Barnesville, Ohio 43713 3 floors
EXIT 202 OFF I-70 • always buying & selling antiques

THE TEAM
ESTATE SALES
Liquidations • Appraisals
Consignments • Senior Services
Estate sales with some style and a bit of flair
ED TUTEN 7007 McVay Place
901-758-2659 Memphis, TN 38119
www.teamestatesale.com

THE GLASS CUPBOARD
P.O. Box 652
West End, North Carolina 27376

Marcia Ellis Cambridge Show
910-673-2884 and Mail Order

FINDER'S ANTIQUE HOUSE

3769 Highway 29 North
Danville, VA 24540

(434) 836-6782

Cambridge • Heisey • Duncan • Fostoria
Open Wed - Sat 11:00 to 5:00 (seasonal hours apply)
Monday thru Saturday 10 - 5:30 Sunday 12 - 5:30

Bogart's Antiques
BUY - SELL - APPRAISE - REFINISH
CANE & REED CHAIRS - CLOCK REPAIR

Jack & Sharon Bogart State Route 40
740-872-3514 shop 7527 East Pike
740-826-7439 home Norwich, OH 43767

BAKER FAMILY MUSEUM
805 CUMBERLAND ST.
CALDWELL, OHIO 43724

740- 732-6410
Mon & Thurs 9-4; Fri - Sat 9-5
Call for Sunday Hours

CRYSTALLINE COLORS
Buy, Sell and Appreciate
Cambridge and other Elegant Glass


I Love Cambridge

Lynne R. Franks 216-661-7382
Ohio Antique Malls

CRYSTAL LADY
Thurs. - Sat. 11-5
1817 Vinton St. Omaha, NE 68108
Bill, Joann and Marcie Hagerty
Shop 402-341-0643 Home 402-391-6730

Specializing in Elegant Glass & Collectibles
www.crystalladyantiques.com

Storck's Antiques
Rick & Joyce
Antiques & Collectibles • Glass & Pottery
Specializing in Fenton, Imperial & Cambridge
Shows & Mail Orders • Storck1@aol.com
Greenfield, MN 55373 • (763) 477-6415

Mother Drucker's
Penny Drucker
 Specializing in Elegant Glassware
Shows and Mail Order
P.O. Box 50261 Phone: 949-551-5529
Irvine, CA 92619 888-MDRUCKER
Website: http://motherdruckers.com

Deborah Maggard, Antiques

Specializing in Cambridge Glass,
American Hand-Made Glass & Victorian Art Glass

Please stop and see our extensive collection of
Cambridge Glass at Riverfront Antique Mall in
New Philadelphia, Ohio (I-77, exit 81)
Booths 805 and 812
You won't be disappointed.

We buy one piece or entire collections.
Please contact me at 440-247-5632
and leave a message, or e-mail at
debmaggard@adelphia.net

P.O. Box 211
Chagrin Falls, OH 44022

JUDY'S ANTIQUES
Judy Bennett
422 S. Ninth Street (corner of Jefferson)
Cambridge, Ohio 43725

Business (740) 432-5855
Residence (740) 432-3045
CAMBRIDGE GLASS MY SPECIALTY


BRIDGES THRU TIME
Elegant Glassware & Antique Collectibles
Located at Alvin Antique Center
2500 South Loop 35 • Alvin, TX 77511

For Web-Storefront and Auctions
Website: www.epier.com/store/BridgesThruTime
E-mail: cambridge@houston.rr.com

THE JONES GROUP
Cindy Jones
Buy and Sell Cambridge Glass

650 Riverside Drive
Sleepy Hollow, NY 10591

914-631-1656 or E-mail Caprice0@aol.com

 **Mary Jane's Antiques**
Early American Pattern Glass
Depression Era Items

2653 Burgener Drive 217-422-5453
Decatur, IL 62521 mjrhumes@aol.com

THE GLASS HOUSE ANTIQUE MALL
Furniture, Pottery, Glass
Antiques and Collectibles
I-70 Exit 146, East on SR 40

8825 E. Pike
Norwich OH 43767 TEL 740-872-3799

GATEWAY ANTIQUE MALL, INC.
JUST NW OF MINNEAPOLIS-ST. PAUL, MN
Next to Super 8 in Rogers, MN
(I-94/101 intersection)

85 Dealers • 7 days; 10 - 6 • 612-428-8286
ELAINE STORCK, OWNER/DIRECTOR

ISAACS ANTIQUES
(740) 826-4015

See our booths in Penny Court Mall in
Cambridge and at White Pillars Antique Mall
(Route 40, one mile west of
I-70 Norwich, OH • Exit #164)

PENNY COURT MALL
637 Wheeling Avenue
Cambridge, Ohio
100 Booths 15,000 sq ft

HOURS: Daily 10-6 Sunday Noon-5
Closed: Easter, Thanksgiving, Christmas
Call for other holiday hours 740-432-4369

MARGARET LANE ANTIQUES

2 E. Main St. New Concord, OH 43762
Lynn Welker (740) 826-7414

Cambridge Glass Matching Service
Hours: Mon-Fri 10-12 AM, 1-5 PM
or by appointment

Our House Antiques
Linda & David Adams
Las Vegas, NV

702-838-1341 or
800-357-7169
Web: www.OurHouseAntiques.com
E-mail: David@OurHouseAntiques.com

Swans Recently Spotted in Texas...



See Page 15 for details.

Important Note About the NCC Website www.cambridgeglass.org

The NCC Website's e-mail has been equipped with a state-of-the-art virus filter. If you send an e-mail to our webmaster and it contains any viruses, worms, trojans, etc., it will not get through.

If you have e-mailed the webmaster and have not heard back, it may mean your original message was deleted by our system. Please be sure your computer is virus-free and try again. Thank you.

NATIONAL CAMBRIDGE COLLECTORS, INC.
P.O. BOX 416
CAMBRIDGE OH 43725-0416

Website: www.cambridgeglass.org
E-mail: NCCcrystalball@aol.com

The New Glass Candlestick Book



Now Available

see page 20 to order
your copy today

**Register early for the
2004 NCC Convention**

FIRST CLASS MAIL
US POSTAGE
PAID
PERMIT No. 3
CUMBERLAND OH 43732

FIRST CLASS MAIL

*Membership Renewal Notice:
If the date above your name
is 04-04, this is your last issue,
and your NCC Membership has expired.
Please renew today.*