

Cambridge Crystal Ball



Published monthly by National Cambridge Collectors, Inc.
to encourage and report the discovery of the elegant and boundless product of the
Cambridge Glass Company of Cambridge, Ohio

Issue No. 371

March, 2004

See Crystal Ball photos on-line, in full color at www.crystalballphotos.org (password on page 5)

Figural Flower Frogs, Part III "The Animals"

by Shelley Cole

This portion of the series on figural flower frogs covers the animals, most of which are birds. Let's start with a list of the various types of animal flower frogs:

Turtle, Flat Top (19 holes)

Nearcut Catalog Reprint

Turtle, Domed Top, Item #70
(19 holes)

1940 Catalog Reprint, page 408

Eagle, Item #514 (10 holes in base)
1927-1929 Catalog Reprint,
page 3

Cockatoo (10 holes in base)

no known catalog references

Heron, 12", Item #1111

Type 2 Base (12 holes in base)
1930-1934 Catalogue Reprint,
page J

1940 Catalogue Reprint, page 409

Heron, 9", Item #1136

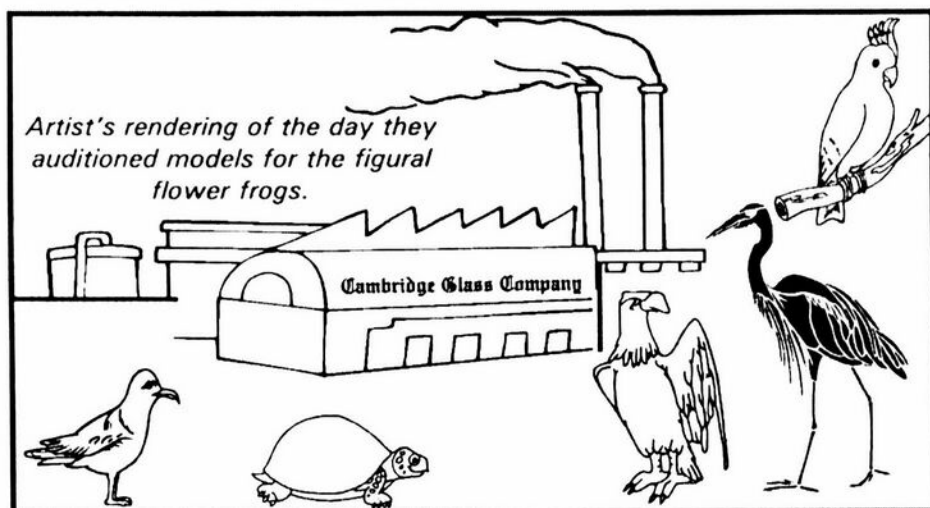
Type 3 Base (8 holes in base)
1940 Catalogue Reprint, page 455
1949-1953 Catalogue Reprint,
page 17
1956-1958 Catalogue Reprint,
page 59

Heron, 9", Item W-119 (Milk Glass)

Type 3 Base (8 holes in base)
1949-1953 Catalogue Reprint,
page W6

Blue Jay, Type 3 Base

1940 Catalogue Reprint, page 455



Artist's rendering of the day they auditioned models for the figural flower frogs.

Seagull, Item 1136

Type 2 Base (10 holes in base)
1940 Catalogue Reprint, page 455
1949-1953 Catalogue Reprint,
page 17
1956-1958 Catalogue Reprint,
page 59

Turtle – First seen in one of the Nearcut catalogues (1914) on a page showing Ebony glass (*pictured at right*). The earliest version had a flat top. It was not seen in catalogues during the 1930s but it reappeared in the 1940's with a domed top and the item number 70. Described as 3.5" with 19 holes for flowers. Also known in Crystal, Crown Tuscan, Royal Blue and a dark green.

From the September 24, 1914 issue of Crockery and Glass Journal... "The Cambridge Glass Company will undoubtedly have a good demand for the new flower holders which D. King Irwin (Cambridge's New York rep) has just placed on display. They include low, squat shaped bowls to be used in conjunction with a glass holder in the form of a turtle representing the reptile in the act of swimming through the water. Numerous round openings hold the flowers."



View.



Top View.

Turtle Flower Holder

continued on page 5

National Cambridge Collectors, Inc.

PO Box 416
Cambridge, OH 43725-0416

Please notify us immediately of any address change.

Contacts:

President Rick Jones	(914) 631-1656
Secretary Larry Everett	(937) 675-6491
Crystal Ball Editor Alex Citron	(434) 296-2531
NCC Museum (phone)	(740) 432-4245
(fax)	(740) 439-9223

Membership

Membership is available for individuals at \$20.00 per year, and an additional \$3.00 for associate members (12 years of age and older, residing in the same household). Of the \$20.00 dues, \$14.00 is considered the cost of a one-year subscription to The Cambridge Crystal Ball. All members have voting rights, but only one issue of The Crystal Ball will be mailed to each member household.

Multi-year memberships are available:
2 years for \$38.00; 3 years for \$56.00.

2003-2004 OFFICERS AND COMMITTEE CHAIRS

President	Richard D. Jones
Vice-President	Tarzan Deel, Jr.
Secretary	Larry Everett
Treasurer	Dennis Snyder
Sergeant-at-Arms	Charles Upton

Acquisitions	Lynn Welker
Archives	Mark A. Nye
Budget & Finance	Mike Strebler
By-Laws	Alex Citron
Crystal Ball	Alex Citron
Endowment	George Stamper
Facilities	Carl Beynon
	Joe Miller
Grants & Fundraising	Sharon Miller
Long-Range Planning	Doug Ingraham
Member Services	George Stamper
Membership - Chairman	Ken Filippini
Membership - Operations	Jeff Ross
	Linda Atkins
Membership - Development	Freeman Moore
Museum	Cindy Arent
Nominating	Richard D. Jones
Program	David Ray
Projects	Bill Hagerty
Publications	Mark A. Nye
Publicity	Lorraine Weinman
Study Group Advisor	Judy Rhoads
Technology/Webmaster	Linda Roberts
2004 Auction	Dorothy Rieker
	Squeek Rieker
	Lynn Welker
	Shelley Cole
2004 Convention	Mary Beth Hackett
2004 Glass Show & Sale	Joy McFadden
	Larry Everett
2004 Glass Dash	Susan Everett

Board of Directors:

Cindy Arent; Tarzan Deel, Jr.; Larry Everett;
Ken Filippini; Rick Jones; Sharon Miller;
Dennis Snyder; George Stamper; Mike Strebler;
Charles Upton; Lorraine Weinman; Lynn Welker

Cambridge Crystal Ball

The official publication of National Cambridge Collectors, Inc., a non-profit corporation with tax-exempt status. Published monthly for the benefit of its members. All rights reserved; reproduction in whole or part without written permission of National Cambridge Collectors, Inc., and the author is prohibited.

Executive Editor
Research Editor
Advertising Manager
Circulation

Alex P. Citron
Les Hansen
Jeannie Moore
Sharon & Joe Miller

Advertising Rates

Display Advertising (camera-ready):

Full Page	\$50.00
3/4 Page	\$40.00
1/2 Page	\$30.00
1/4 Page	\$20.00
1/8 Page	\$15.00

(Add \$5.00 for each photograph)

Classified Advertising:

10 cents per word; \$2.00 minimum
(Abbreviations and initials count as words)

Dealer Directory:

\$24.00 for twelve-month contract
Text limited by standard box size (see page 19)
Includes FREE listing on NCC website

- Payment in full must be received before advertising will be run.
- Cambridge Crystal Ball and National Cambridge Collectors, Inc., assumes no responsibility for items advertised and will not be responsible for errors in price, description or other information.
- Advertising copy may be submitted to us by e-mail or regular mail as follows:

Ad copy may be sent by e-mail to NCCcrystalball@aol.com, and must be sent by the 10th of the month preceding publication. Ad will not be run until your check has been received at our PO Box.

Ad copy may be sent by regular mail, along with your check, to our PO Box. Copy sent this way must arrive at our PO Box by the 1st of the month preceding publication.

Submissions to

The Crystal Ball

By mail: P.O. Box 416 Cambridge, OH 43725
E-mail: NCCcrystalball@aol.com

Deadlines:

Ad copy by e-mail: 10th of preceding month
Ad copy by regular mail: 1st of preceding month
Articles, study group reports, etc: 10th of preceding month

MEMBERS ONLY

Visit the "Members Only" section of the NCC's website at cambridgeglass.org/NCCmembers

Features available only to NCC Members include:

Reprints of Research Articles
Minutes of Board Meetings

User name: NCC Password: TriangleC



President's Message:

Gearing Up in the New Year

As January drew to a close, it was interesting to see how another thaw came to an end. To elaborate ...

NCC is comprised of, and managed by, volunteers. People with jobs, families, obligations, so-called "retired people" who find themselves busier than ever (you know who you are!), teachers, businesspeople, everyday workers, everyday people.

"Our" availability to work on club related activity has a real ebb and flow. Perhaps in the time I've been around, I can sense a "pulse of the club." It is interesting to see how and when people generate the energy to get going on the works of the club.

This year ... the date was around January 20th that's when the "pace" of the club picked up.

This pace takes many forms (and of course it didn't all happen on that date!) and it happens all over the country. The holidays are over, people are getting tired of the cold (except our Southern and Pacific members), they are thinking toward Spring and the work of the club becomes top of mind ...

... we have a museum to open, tours to book, new displays to arrange, cases to be cleaned, an Auction to gear up for, reservations to make, a Convention to plan, new books to finalize, new organizational plans and committee seats to fill, a new slate of candidates for the Board to arrange, incumbents to question and new members to recruit, a Glass Dash to plan, dealers to recruit, a Glass Show to fill, contracts to send out, regional shows to plan for – both displays and book sales, the list goes on and on.

Remarkably, IT ALL GETS DONE! And then some!

One of the jump starters to our 2004 inertia was the wonderful receipt of a naming grant from the Shepard Foundation (I apologize if I'm not using the proper name!). Coupled with this \$10,000 gift, we also received \$7,000 in showcase naming gifts. This met our target budget to complete the Education Center in the back room of the Museum. Our thanks to the generosity of our donors!

Quite fortunately, Dave Edwards and his team (who also built the main museum showcases) had a break in their schedule and started on the backroom cases a couple of weeks ago. From the digital photos Cindy Arent has sent me, the room is shaping up wonderfully. You are not going to recognize it!

We will be opening the museum during Auction weekend. One of our faithful workers – Betty, has agreed to staff the museum so that members in town for the Auction can see what's new at the museum.

Our thanks to the Wollenhaupts and Huffords for agreeing to handle the rotating display room. I understand that their current plans are to display decalware and smokers items. It should be wonderfully educational.

The museum "dining room" is being set in Black and Gold including unusual Lorna and Imperial Hunt Scene pieces in Black and Gold.

We have some new committee slots to announce. Linda Adkins has agreed to transition over from Jeff Ross in membership. She will be handling the operations side of this critical function. Freeman Moore will be handling Member Development – building new membership programs to help keep us vibrant and build even

more momentum to our outreach program – they both will be ably assisted by Ken Filippini who is captaining this whole initiative on behalf of the Board.

Speaking of the Board, we have a wonderful Nominating Committee this year. It includes Georgia Otten, Jeannie Moore and Jeff Ross. The committee will announce their slate for the 2004 Board elections at our March meeting.

Our Treasurer, Dennis Snyder has been busy researching ways we can improve our commerce – including electronically. He has been building a plan for us to create an Ebay Store. While still in the formulative stage, this initiative holds much promise.

By the time you read this, we will be right on top of our Annual Benefit Auction. I can't thank Dorothy and Squeek Rieker enough for their skillful handling of this very complex operation. Lynn Welker, as always, is the best and works very hard to support them in making this one of the premiere events in NCC. The dollars this auction raises to help support club operations are vital to our ability to accomplish and build on our mission.

We have so many people working to move us forward. It is a wonderful thing!

Research & History:

Looking Back: the 1980 Auction

As many of us gather in Cambridge this month for our annual auction, we thought it might be interesting to have a look back 24 years to the 1980 NCC auction; the first for which the auction catalog was included as part of the Crystal Ball.

The first NCC auction was in August 1974. For the first three years, it was done without a printed catalog and included about 250 lots of glass.

In 1977 and 1978, printed catalogs were mailed to members a month before the auction. Then, in January 1980, the catalog was included in the newsletter and the auction itself was moved to March.

The 1980 auction, with 300 lots, also marked the debut of Craig Connelly, who still serves as our auctioneer to this day. The auction was attended by about 200 people.

Interestingly, three lots were withdrawn from the auction at the last minute because they were determined

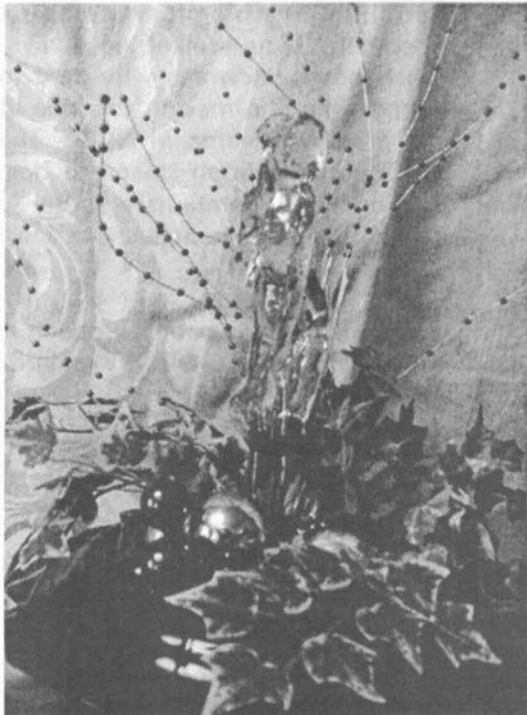
to be non-Cambridge glass. However 21 lots were added on auction day, yielding a true total of 318 lots sold.

The highest price paid in 1980 was \$290 for an Azurite 8" comport decorated with black, enamel peacocks. Other top prices paid were \$235 for a Rubina block-optic 10" vase and \$190 for a pair of Helio Doric Candlesticks.

A few items stand out as being unbelievably inexpensive (this was 24 years ago, of course): an Amethyst #1066 cigarette holder for \$8, a Cinnamon Buffalo Hunt Bowl for \$35, a Primrose 8" bowl with black enamel trim for \$35, a White Rain sherbet for \$30 and a Blue Cloud sherbet for \$25.

Nothing in 1980, however, comes close to the sale of a 17" Mardi Gras bulbous vase at the 1976 auction for \$85 or a Carmen nude cigarette box, with lid, in 1979 for \$45. It's safe to say one would have to spend a bit more lavishly today to buy those pieces. As one might expect, the rarer glass has increased in value over inflation, while the more common items have just about held their own.

Someday, it seems, we may all look back at our 2004 purchases as great bargains.



Using Your Figurative Flower Frogs

by Shelley Cole

There probably is not a better way to arrange flowers than to use a flower frog – especially one with a figure. You just can't go wrong as long as you keep the flowers from hiding the figure. While most of the figures will work with pretty much any bowl, there are a few exceptions. The large Draped Ladies and Bashful Charlottes really do require a good sized bowl to keep them from looking ridiculous. I use the Everglade Buffalo bowls with mine. I was also lucky enough to acquire an entire console set including the #513 Draped Lady on Type 1 base, #755 14" bowl and a pair of #637 candlesticks – all in Bluebell. This bowl also provides the size needed to balance the 13.5" flower frog. Another wonderful compliment to the 8"-9" figurals is the #823 centerpiece. It is pictured with the Mandolin Lady in the 1927-1929 Catalogue Reprint on page 59.

The centerpiece provides a round indentation in which the flower frog sits as well as four candleholders - one at each corner. These pieces are often found with wonderful enameled decorations.

Placing one to two stems into each hole uses just enough flowers to create a lovely display. I usually put taller stems in the back and short stems in the front. I have also floated flowers in the bowl at the feet of a lovely lady.

At left:
A Draped Lady in
an Everglade
Swan Bowl,
decorated with
Christmas greens
and berries.

Research & History:

The Animal Flower Frogs

continued from page 1

Eagle – very little is known about this flower holder. It came out sometime in the 1920s. It had no descriptive name associated with it so we have dubbed it the Eagle. The bird sits perched on a tree stump. This figural flower frog stands about 5.5”.

Cockatoo – as referred to by Bill Smith in his Flower Holders article in C.B. #34. At that point and at the Cambridge Animals presentation in November 2001, there is question as to whether this piece is Cambridge. However, since the quality of glass and color of glass coincide with Cambridge, it is believed to be made by Cambridge. Other similarities between it and the Eagle also point to its being Cambridge Glass. The base is identical to the base used on the Eagle and it stands about the same height. There is at least one example in the National Museum of Cambridge Glass.



This line drawing (from CB # 34) is the only published image we have of the elusive Cockatoo flower frog.

Hérons – from Bill Smith’s article in C.B. #41, “The #1111 is the oldest of the three figures and is possibly the most desirable if one judges in terms of workmanship. It stands 12 inches high and has a type 2 (smooth) base.

“Production of this figure started in the late 1920’s. It was mentioned in an article that appeared in China, Glass and Lamps as being a new product of the Cambridge company at that time. Our earliest catalog reference is the new 1930-1934 Reprint that shows this item on page J. This page would be from late 1930. It also appears in the 1940 catalog which would indicate that it was produced for at least 11 or 12 years.

“The early pieces from this mold had excellent detailing. One can distinguish four distinct feather types on the figure. The rushes that are used to help provide support for the figure are also identifiable as Cattails. As the usage of the mold continued much of the finer detailing was lost.

“This figure is a very complimentary companion piece to the Swan motif Everglade pieces which also show the Heron and Cattail details as part of their general design.

“The #1136 and #W-119 were both made from the same mold so the description will cover both figures.

“These figures are only 9 inches high, have a Type 3 (ribbed) base and no fine detailing. The foliage utilized to provide the additional support has been stylized to a degree and has lost

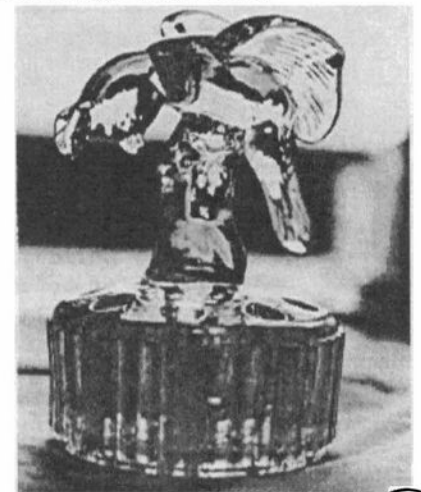
its identity as a particular type of plant.

“Our first reference to the #1136 is the 1940 catalog. The mold number would seem to indicate introduction shortly after the #1111, but this apparently is not the case. We find additional reference to this figure in the June 1949 and the Sept. 1950 catalogs. It was quite possibly one of the items that were carried until the close of the factory.

“The #W-119 designation was given to the Milk Glass production. Mr. W. C. Orme informed us at a past Convention that Milk Glass was introduced in 1953 and that it was produced until the factory closed. From this we know that the mold was still in use, whether they were running other than Milk Glass, we do not know for sure.

“Our reference material does not indicate that there were any of these figures produced in colors.”

Blue Jay – Not much has been written about this flower holder. It has been seen in crystal, moonlight, forest and mandarin gold. The example in my collection shows some detail on the wings, tail and crown as well as defined feet holding onto a smooth stump. This figure was also used as a peg insert with the Cambridge Arms sets.



*Photos on-line in full color at:
www.crystalballphotos.org
password: *springtime**

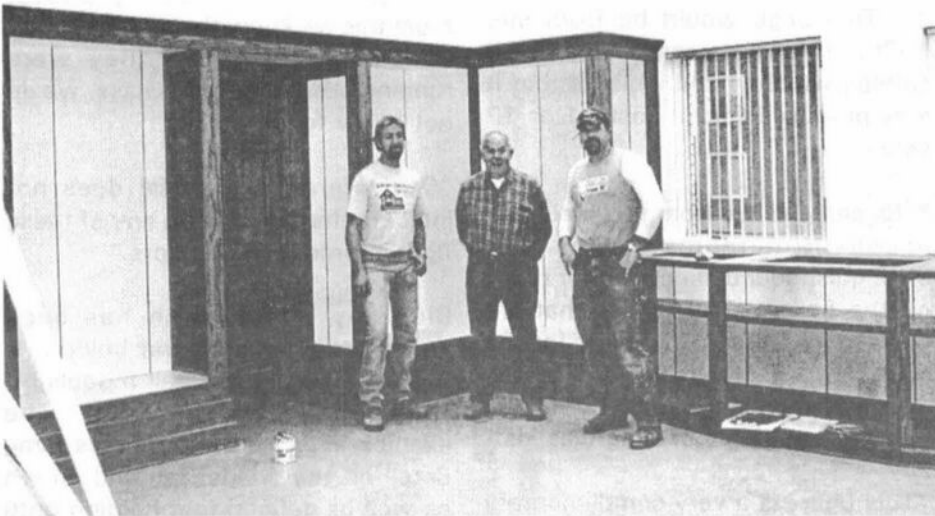
The Museum:



What's New at the NCC Museum

by Cindy Arent
Museum Chairman

A "Mega Work Session" was held on February twenty-first. Twenty-five NCC members converged on the museum with glass for display, vacuum sweepers, Swiffers, and cleaning supplies. Members able to attend were; Carl and Shirley Beynon, Charles Upton, Lynn and Mary Welker, Kay Mears, Frank and Vicki Wollenhaupt, Ron and Norma Hufford, David Ray, Mike Strebler, Sharon Miller, Jeff and Jill Ross, Judy Momirov, Linda Adkins, Lorraine Weinman, Mark Votaw, Rich Bennett, Kay Marchant, Mike and Cindy Arent, John Corl, and Betty Sivard. We were fortunate that Edward's Construction had finished the first phase of building in the Education Center which enabled the NCC crew to clean the room from ceiling to floor. Within the next few weeks, the glass shelving/doors and lighting will be installed. Those of you who will be attending the auction will be able to view the museum progress on Friday, March 5 and Saturday, March 6, from noon to four o'clock each day.



The National Museum of Cambridge Glass is now ready for the 2004 season that unofficially begins on February 23rd when thirty- three tour operators from the Midwest arrive to tour the museum. Each director will receive a packet of information about the museum, glass show & sale and

continued on page 15

**The National Museum
of Cambridge Glass
is currently closed
for the season.**

See you in April!

The dining room display area at the National Museum of Cambridge Glass has been set for the 2004 season with an awesome collection of gold-decorated ebony glassware.

Events:

November's Quarterly Meetings

If your New Year's resolution was to become more active in NCC, this might be a great opportunity for you. While most of us are still feeling the excitement of this year's NCC benefit auction, it is already time to begin thinking about a program for the November Quarterly Meeting 2004.

Two years ago, a small survey was conducted at the convention in order to determine which topics were of the greatest interest to NCC members. From that survey, this year's program, *Reproductions*, was a suggestion from several people. Here are some of the other topics that were suggested: nude stems, Caprice, vases, flower frogs, smoking items, and color comparisons.

Many NCC members are very qualified to lead a presentation on one of these topics or some other topic. If you are that person or know someone who may be willing to lead a discussion for the November program, please email me at westervillesh@hotmail.com. Other topics for future programs would be appreciated. Thank you!

David Ray, Program Chairman

Letters:

Dear NCC,

We have not been able to attend the auction for several years, but I wanted to tell you how inspiring it has been to see the growth and commitment to the overall development of the NCC, both at the museum and with the newsletter and website. You have our sincere appreciation here in central Illinois.

Roger Hawk
Toulon, IL

Convention Corner Somewhere Over the Rainbow

by Shelley Cole, Convention Chair

It's March, Benefit Auction Month for National Cambridge Collectors. Hard to believe we have to be thinking about Convention, but it's true. Have you put the dates in your calendar, PDA or Blackberry yet? Do you have your hotel reservations? If you haven't, why not take care of it right now? The motels, rates and contact numbers are included on page 20 of this issue for your convenience.

Once again, this year, we're going to shake things up a bit – not too much, but a bit. As I mentioned in the December issue, we're going to be lining up for the Show and Sale by handing out numbers. No more standing in line for 7 hours to be first through the door!! This will allow us a bit more freedom to get to meetings during the morning on Friday. We'll have the Orientation meeting with First Time Attendees and Mentors and a joint Study Group Meeting that morning and still have time to catch up with friends, old and new.

We've also moved our Banquet to Friday evening. We had so many dealers coming to the banquet tables sweating and out of breath and more that weren't able to make it at all, that we're going to try it on Friday this year. This will also allow those who have to hit the road for home Saturday afternoon or are just worn out by

then to attend the Banquet as well. The Annual Meeting will follow the Banquet in the Auditorium.

On Saturday we'll have the Glass Dash in the morning and, in the afternoon, more Programs, Glass ID and Bring and Brag followed by a lovely dinner catered by Theo's of Cambridge. Of course, you'll want to find time for one more walk around the Sales floor as well. As a special treat, we'll meet Howard Seufer, who worked as Quality Control Manager for Fenton Glass. He'll be giving us a hands on lesson in making glass. More on that in a later issue.

Planning for the programs is still shaping up, but we do know that David Ray will be presenting a program on Cambridge Candelabra and that the Miami Valley Study Group will be presenting a program. No matter what the topic, we know it will be a program worth seeing. How many of us are now Everglade collectors after seeing their program a couple years ago?

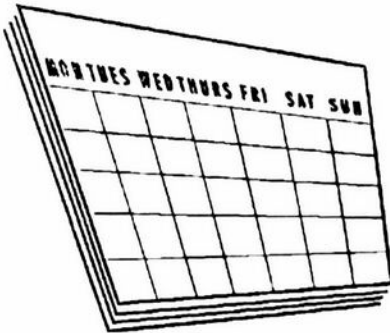
Look for the Registration Form in next month's issue. Who will be the early bird that captures the prize?

Motel Listings on Page 20

Events:

If you know about any upcoming glass shows or other glass events, please pass the word on to us at least six to eight weeks before the show dates. These listings are free of charge.

Mark Your Calendar



- > NCC Convention
Thursday, June 24 thru
Saturday, June 26
- > Quarterly Meeting
Saturday, August 16
(Tentative)
- > Quarterly Meeting
Saturday, November 6
(Tentative)

*Tom Felt, Elaine Stoer
& Rich Stoer's
great new book on
Candlesticks,
including dozens by
Cambridge, is now
available.
See Page 17 to order.*

Upcoming Glass Shows

March 13-14:

20-30-40 Society's
Chicagoland DG Show
North Lake, IL

March 20-21:

Long Island DG Show & Sale
Freeport, NY
Call (516) 798-0492

March 20-21:

Western Reserve DG Club
Show & Sale
Broadview Heights, OH
Call (440) 439-5243

March 27-28:

Nutmeg DG Show
Southington, CT
Call (860) 559-6313
E-mail: eemorse@attbi.com

March 27-28:

All American Glass Show
Washington County Fairplex
Hillsboro, OR
Call (503) 640-9122
E-mail: coeran@aol.com

April 2-3:

North Jersey DG Club's Show
Allendale, NJ
Call (973) 423-1324
E-mail: cdrizzo@aol.com

June 3-6:

Imperial Glass Collectors Society
28th Annual Convention & Sale
St. Clairsville, OH
E-mail: info@nigcs.org

SPRING DEPRESSION GLASS SHOW & SALE

FREEPORT RECREATIONAL CENTER

130 Merrick Road • Freeport (LI), NY

SATURDAY, MARCH 20, 2004 • 12:00 TO 6:00

SUNDAY, MARCH 21, 2004 • 10:00 TO 4:00

*Door Prizes
Reference Books
Unlimited Parking*

*Free Depression Glass
ID & Appraisal
Sunday Only
(limit 6 pieces)*

Grand Prize

Luncheon Set
COBALT MODERNTONE

DONATION \$5.50

WITH THIS AD, 2 FOR \$5.00 EACH

Sponsored by

The Long Island Depression Glass Society, Ltd.

For information, call (516) 798-0492

Study Groups:

The NCC has several study groups; these are the groups currently active and holding regular meetings. Listed below is contact information for these study groups.

If there is no study group in your area and you are interested in starting or joining a new study group, please contact NCC Study Group Advisor Judy Rhoads at kjrhoads@aol.com.

- #13 - Miami Valley Study Club**
Miami Valley area, Ohio
Larry Everett
db0098@dragonbbs.com
(937) 675-6491

- #14 - The Cambridge Cordials**
Cambridge, Ohio
Lorraine Weinman
blweinman@hotmail.com
(330) 966-9376

- #15 - North Texas Cambridge Study Group**
Dallas area, Texas
Scott Pierce
scottpierce1@msn.com
(817) 427-9510

- #16 - Elegant Glass Collectors**
PA & NJ
Bill Dufft
billnvon@aol.com

- #17 - The Columbus Wildflowers**
Columbus, Ohio
Barbara Wyrick
bwyr@ee.net
(614) 291-0361

- #18 - The Cambridge Triangles**
VA, MD, DC
Alex Citron
NCCcrystalball@aol.com
(434) 296-2531

- #19 - NE Ohio Cambridge Collectors**
Akron-Canton area, OH
Hilda Pfouts
pfoutshi@aol.com

- #20 - South Florida Study Group**
Miami, FL
Linda Gilbert
rosepointbabe@aol.com

North Texas Cambridge Study Group #15

October 12, 2003

The North Texas Cambridge Collectors met at Applebee's restaurant for an early October meeting. Our normal meeting day is the last Sunday of the month, but we decided to hold our October meeting in conjunction with the "Age of Elegance" glass show in Waxahachie TX.

We had good participation and shared lots of observations from the show. Freeman and Jeannie Moore reported on events from the NCC table at the show. They had good sales and answered a variety of questions. Several people brought items in for glass-id. With the partnership of Cambridge, Fostoria and Heisy, we were able to ID 100% of the items people brought in.

Our show and tell included: azurite center handled serving tray, King Edward cream and sugar, amber 3400/88 shaped relish dish, milk glass heirloom creamer (missing it's mate), and a 2508 near cut pitcher and glass.

Our next meeting will be December 7 at the Pierce's. This will be our Holiday dinner and gift exchange.

December 6, 2003

Members of the North Texas Cambridge Study Group gathered in Keller Texas at the home of Scott and Gwenell Pierce for our Christmas meeting and exchange. Their house had recently gained two new cabinets, which were used to display some of the cream and sugar collection. Of course, their Caprice was on display as well. A year ago, it gained two cabinets for their Caprice collection. Hum, what will happen next year?

Thanks to the host for providing the main course. Everyone helped make

the meal a success by bringing a dish to share. The meal and conversation made for a grand evening.

After dinner, we moved to the living room for the really fun stuff. Everyone brought a piece of Cambridge glass that they had found for under \$20 for the blind gift exchange. People could select an unopened package or "steal" a package from someone else. However, a particular package could only be stolen twice. Some of the delights that came from under the tree included: moonlight blue Georgian candy dish, amber 3400/88 relish, 3400/48 crystal bowl, Blossomtime creamer, Farber Bros. relish with crystal insert, Cambridge square 3797/26 plate, and Heirloom crystal 5000/50 bowl. Santa's elves had been busy!

There were a few items for Show and Tell: 3400 Crown Tuscan ball jug, 2694 Nearcut pitcher, amber decanter with E703, P.384 mandarin gold bowl with calla lily candleholders, Caprice 10 oz tumbler with frosted foot, Chantilly footed sugar, pink 2 kids flower frog with patent number, moonlight blue Caprice oil, Mount Vernon center handled sandwich tray with E703, Rosepoint sherbet on 3130 stem, and a unique non-Cambridge glass blower statuette on square ashtray.

It was a great evening and thanks to everyone for attending. The January 26 meeting will feature Jeannie Moore talking about Georgian tumblers - Cambridge and otherwise. We developed a list of topics for future meetings: animals, mistakes we've bought, Charleton, candlesticks, cream & sugar, salt & pepper.

Submitted by Freeman Moore

Study Groups:

Study Group #13

Miami Valley Study Club

The meeting of January 13, 2004, was called to order at 7:00 p.m. by the President, Larry Everett.

The meeting was held at the Huber Heights Public Library. There were 16 members present.

There was no Secretary's Report as the minutes were E-mailed to each member. The Treasurer's report was submitted for approval.

OLD BUSINESS:

There was no old business.

NEW BUSINESS:

Dave Rankin stated that he will be taping the program portion of the meeting.

Vicki Wollenhaupt offered some ideas for a program for convention. One idea would be to take digital photographs, and hand out disks rather than paper to the attendees. Disks could then be sold at the museum or on E-bay as a fund raiser. Another idea would be to video record the presentation in advance, and then show pieces of glass live during the showing of the video.

Another idea for a fund raiser would be to copy the Cambridge sticker that was on Bev Acord's package at Christmas. Then the stickers could be sold.

ADJOURNMENT:

There being no further business, the meeting adjourned at 7:30 p.m.

SHOW AND TELL:

Georgian covered candy in Pistachio, #1456 2 ½" ashtray in moonlight; #1455 2 ½" cigarette holder in moonlight; soap dish in turquoise; #3900/38 cream and sugar with Rose Point etching; #3900/1177 Salt & Pepper with Rose Point etching;

#3900/135 3-part relish with Rose Point etching; #238 Alpine Caprice lamp; #3500/37 7" comport with RC Adonis; #3500 Rams head refectory bowl with Elaine etching; Blue Two 9" candlestick; #1045 13" light emerald type 1 swan; #518 8 ½" draped lady flower frog in amber.

PROGRAM:

Larry Everett presented a program on Tumblers.

Respectfully submitted,
Diane Gary
Secretary Pro Tem

Study Group #15 North Texas Cambridge Study Group

On January 25, 2004, Flower Mound, Texas was the site of the first meeting of the year for the North Texas Cambridge Study group. If there was any doubt to the location, we had a yard sign in place (see page 20). Freeman and Jeannie Moore hosted the meeting on a warm and sunny January day. As members arrived, they were given a list of "scavenger hunt" items to find. Since everyone likes to look at glass, the scavenger hunt had them looking for specific items. At the end, the winner was drawn by number and Bert Kennedy got the door prize, a 7516 low sherbet etched E408.

Jeannie was well prepared to talk to us about Georgian tumblers. She had the kitchen counter full of tumblers, sherbets, sundaes, baskets, and even a covered candy. The tumblers were every color from crystal to rubina. She explained the 4 sizes of tumblers. She also had a 2 ½ ounce and 9 ounce Martha (grape) etched tumbler for display. Jeannie had handouts of the Crystal Ball articles by Frank Wollenhaupt and referenced the two books by Measell and Wiggins. She noted that over 11 companies made Georgian

tumblers. One observation was that the candy and basket seem to be made from the same mould.

There were a few items for Show and Tell: moonlight blue caprice large salad bowl, Dianthus pink decagon cream and sugar, Dianthus pink decagon sugar with E733 etching, 1236 Carmen ivy bowl, 3500 individual size amber cream and sugar, Caprice banana boat, Jack in the Pulpit vase with Bennett label, Heirloom 5000/67 candleholders, 3060 stem with E704 where the top border was done in silver.

We looked at upcoming schedules and decided to combine the February and March meetings into one lunchtime meeting on Saturday, March 13 at the Metroplex glass show in Grapevine. The April meeting will be at Gerri Cook's on the topic of "Trick and Treat" - bring your good bargains and what you got took on. The May meeting will be at the Pierces and focus on cream & sugars.

The afternoon concluded with great conversation and snacks.

Submitted by Freeman Moore

Study Group #14 The Cambridge Cordials

December:

On Saturday, December 20, 2003, the Cambridge Cordials Study Group met for their annual holiday get-together meeting at Cindy and Mike Arent's home. Those present were: Linda Adkins, Mike and Cindy Arent, Rich Bennett, Carl and Shirley Beynon, Kathy Chester, Joe and Sharon Miller, Judy Momirov, Mike and Lisa Neilson, Jeff and Jill Ross, Marybelle Teters, Lindy Thaxton, Mark Votaw, Lorraine Weirman, Mary Welker and Lynn Welker. Judy Bennett was our guest.

The house was festively decorated and was picture perfect for the celebration. Possibly the tallest

Study Groups:

Christmas tree in Cambridge, with the most ornaments, was surrounded by the Cordials group. A lavish feast was spread out for all to enjoy...and enjoy we did! Cambridge Glass was still the main topic of the evening. A very short business meeting was conducted. Joe and Sharon provided a treasurer's report.

All joined in for a good time competing in groups singing Christmas carols. Each group had to sing one verse of a carol, in seconds the next group had to start the next song, and so on, with no one repeating any carols. The rounds went on and on, competition was fierce. Memories were good and creativity was alive. Finally the champions emerged with the group of Lynn Welker, Lisa Neilson, Lorraine Weinman, Mark Votaw, Judy Bennett, and Mike Neilson winning in the verse to verse battle. The winners were awarded prizes for their efforts.

Then the Christmas gifts were brought out. Rather than exchange gifts among the group members, it has become tradition to buy gifts to give to the Museum. What wonderful surprises were unwrapped. These were: a vase with an orchid etching, known as "Silvertone Orchid"; a large Crystal hambone ashtray with "The Cambridge Glass Co." etched on the side; an Amethyst #3126 goblet; a Crystal 9 oz. Georgian tumbler; a Gold Krystol #3122 cordial; two arch-foot Daisy nappies with red flashing; an Amber wide optic cocktail with a Rockwell silver rooster on it; and a Sweetheart claret. (See photo)

January:

On Saturday, January 10, 2004, the Cambridge Cordials Study Group had its first meeting of the new year. This was a scheduled work session at the Museum. Those in attendance were: Linda Adkins, Cindy and Mike Arent, Rich Bennett, Shirley and Carl Beynon, Kay Marchant, Sharon Miller, Judy Momirov, Jeff Ross, and

Lynn Welker. Mike Strebler and Charles Upton were guests.

A lot was accomplished during the work session. Tasks accomplished were: cleaned out the backroom in preparation for construction, cleaned the three feature display rooms, cleaned all punch bowl sets on top of the cases, worked on glass inventory, and cleaned glass-making exhibit. Carl worked on changing fluorescent bulbs and ballasts and Charles worked on the book inventory.

During a break in the work, the group watched the videotape of Cambridge Glass factory workers Dan Slay and Whitie Klass. This interesting videotaping was done at the 2003 Workers' Reunion.

The next meeting will also be a planned work session at the Museum on February 21, 2004. There is much to be done to get the Museum ready for the spring opening.

- Submitted by Lorraine Weinman



This year's Christmas gifts from The Cordials to the National Museum of Cambridge Glass. This has become an annual tradition; perhaps other study groups might do the same.

The New Glass Candlestick Book



Now Available

see page 17 to order
your copy today

Quarterly Meeting:

National Cambridge Collectors Inc.

Quarterly Meeting, November 8, 2003

President Rick Jones called the Quarterly Meeting of the National Cambridge Collectors Inc. to order at 7:18 p.m. on November 8, 2003 at the Theo's Restaurant in Cambridge, Ohio.

Mark Nye moved to approve the minutes of the August 23, 2003 Quarterly Meeting as published in the Crystal Ball. Georgia Otten second. Motion carried.

Treasurer Dennis Snyder reported on the organization's financial activities from January 1, 2003 through September 30, 2003. During this period the mortgage was reduced by \$5,925 and as of Nov 5, 2003 the remaining balance on the mortgage was \$67,632. The mortgage was refinanced in March at the rate of 6.375%, with current payments at \$1,012/month. The original mortgage was \$125,000.

Account balances were:

	<u>9/30/03</u>	<u>1/1/03</u>
Operating	\$57,280	\$55,759
Special Activity	\$1,602	\$455
Century Club	\$22,938	\$13,645
Endowment	<u>\$40,285</u>	<u>\$35,480</u>
Total	\$122,105	\$105,339

The total cash balance for the NCC as of 9/30/03 was \$122,105.

COMMITTEE REPORTS:

Acquisitions - Lynn Welker: Lynn reported that Tom Felt (co-author of The Glass Candlestick Book) donated 46 pair and 25 single candlesticks to the NCC. The major acquisitions for the year were the Rosepoint sets that illustrate the etching process. Members donated much of the monies for this acquisition.

Budget and Finance - No report.

Archives - Mark Nye: The layout has been approved for the Bill and Phyllis

Smith Research Room. The room is scheduled to be completed by Convention 2004.

Bylaws - Alex Citron: Membership will be voting on the proposed amendment to the bylaws tonight.

Endowment - George Stamper: no report.

Facilities - Carl Beynon: Repair work on the museum roof is scheduled for the week of July 8 or July 15. The job will take one week to complete and the parking lot will be closed during the repair activities.

Grants and Fundraising - Sharon Miller: Encouraged members to contribute to the Century Club.

Long Range Planning - Mike Strebler: No report.

Member Services - George Stamper: No report.

Membership - Sharon Miller reported for Jeff Ross: 868 Master members, 366 Associate, 6 Honorary, and 5 Life for a total of 1,245.

Museum - Cindy Arent: The museum is closed for the year. A total of 31 tours visited the museum this year, a big thanks to all the volunteers and staff that assisted. The last tour of the year is scheduled for next Saturday.

Nominating - Tarzan Deel: Tarzan Deel recused himself from the nominating committee because his seat is up for re-election. Rick Jones will serve as the chairman of this committee as specified in the By-laws.

Program - David Ray: Lynn Welker and Frank Wollenhaupt will present a program on Cambridge Glass reproductions. David asked that if anyone has ideas for next years program, please send them to him.

Projects - Bill Hagerty: Not present.

Publications - Mark Nye: The Board has approved the publication of the new Rock Crystal Book. It should be available by the March meeting.

Publicity - Lorraine Weinman: Various Internet websites have been updated to include information on the auction, convention and other upcoming activities.

Study Groups - Ken Filippini: No report.

Technology - Linda Roberts: No report.

Convention - Shelley Cole Citron: Working on next year's convention. She asked that if anyone is interested in helping in any capacity, please let her know.

Auction - Squeek and Dorothy Rieker: Lynn Welker reported that the auction glass would be unpacked on Monday. Unfortunately, there were so many items this year, the auction committee had to turn down many good items.

Glass Show and Sale - Mary Beth Hackett and Joy McFadden: Not present.

Glass Dash - Larry and Susan Everett: No report.

Crystal Ball - Alex Citron: No report.

OLD BUSINESS:

Alex Citron presented the proposed by-laws amendment. This amendment was published in the October Crystal Ball. The amendment was read in entirety to the members present. Nancy Finley moved to accept the proposed amendment as published in the Crystal Ball. Frank Wollenhaupt second. Motion carried unanimously.

Rosepoint:

- A lovely #1006 Cigarette Holder, gold-encrusted Rosepoint, sold on February 3 for \$384.



- A lovely #1006 Cigarette Holder, gold-encrusted Rosepoint, sold on February 3 for \$384.

Other Etches:

- A #3400/29 Gold Kristol Ball Jug, etched Apple Blossom sold on January 31 for \$270.
- A beautiful, four-footed 3400 Ebony bowl, gold-encrusted wildflower, sold on February 6 for \$549.



Nudes:

- A Royal Blue cupped comport sold on February 7 for \$260.
- A Moonlight Blue Brandy sold on February 8 for \$230.

Flower Frogs:

- An Ivory 8.5" Draped lady sold on February 1 for \$875.



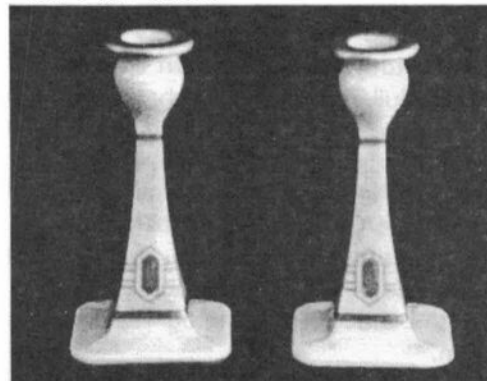
Miscellaneous:

- A very rare owl lamp in brown enamel sold on February 5 for \$745. There was some damage to the base.



Opaques:

- An Ivory Console Set (Ram's Head Bowl and Doric sticks) sold on February 2 for \$355.
- A pair of Primrose candlesticks with black and gold enamel sold on February 3 for \$195.



- A pair of Helio candlesticks with the gold cat tail decoration sold on February 4 for \$330.

Rockwell Silver:

- An absolutely awesome Cordial Set in Royal Blue, decorated with Rockwell Silver irises sold on February 8 for \$3801.



Caprice:

- An extremely rare Moonlight Caprice Cake Salver did not meet the reserve. The high bid was \$1,325.



#31 - 2 Pc. CAKE SALVER

Help Wanted: Articles

The Crystal Ball wants you!

It's been a while since I've shamelessly begged for submissions to The Crystal Ball, so here goes...

I have been pretty seriously short of articles lately. Only because I'm a clever and resourceful guy (and humble too), have we been able to print a full newsletter each month. Yeah, it's pretty easy in January, when the auction list takes up 8 pages. And February wasn't too tough; the Constitution and By-laws ate up another seven pages. But this March issue... I almost had to drag out the old 1906 Catalog reprints again.

Shelley Cole (who conveniently happens to be my wife) has submitted a nice four-part series on Figural Flower Frogs - Part III appears in this issue. Les Hansen, of course, has done a great run of articles on the Hellmers'

Colors. Now Les is almost done with those, and Shelley's only got one part left, so we're fast approaching a big old void. Can you folks help me out?

While scholarly research articles are always sought and welcomed, the Crystal Ball can also use other types of pieces. To make it easier on you, here are some ideas:

- The most surprising find I've ever made.
- I discovered this wonderful shop/mall/flea market, etc.
- How I started collecting - mom's wedding stemware, etc.

The Crystal Ball relies on contributions from you - the members of NCC. You really don't want me to start making stuff up. So spend an evening at the kitchen table and write something. Your fellow members will thank you!
--Alex

November Quarterly Meeting
from page 12

NEW BUSINESS:
None.

Frank Wollenhaupt moved to adjourn. Second by Fred Schaefer. Motion carried.

The NCC Quarterly Meeting was adjourned at 7:49 p.m.

Respectfully submitted,

Larry Everett, Ph.D.
Secretary

Last-Minute Update

Many of the motels in Cambridge have agreed to honor special, reduced rates for auction weekend. Be sure to mention NCC at check-in, and you may save a few dollars.

Hillsboro All★American Glass Show & Sale

featuring
Glassware ★ Pottery ★ Dinnerware



March 27-28, 2004

SAT., 10 am - 5 pm • SUN., 11 am - 4 pm

ADMISSION \$6.00

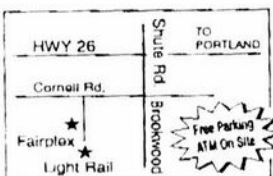
Early Buyers: Saturday, 8 am - 10 am, \$10.00

\$2.00 Discount with this ad or flyer

Glass Seminars

Saturday, 11:30 - Pink Miss America
Saturday, 1:30 - Fostoria Master Etchings
Sunday, 12:30 - Fenton Glass Elephants

Restoration Services • Reference Books • Educational Displays •
Glass Identification (with all donations to benefit the Washington County
Library) These activities available with paid show admission.



WASHINGTON COUNTY FAIRPLEX
874 NE 34th St • Hillsboro, OR
For more info contact Debbie at:
(503) 640-9122

www.glasscastle.com/pnwfa.htm
Sponsored by Pacific NW Fenton Association
Member of Antique & Collectibles Show Promoter Association
Concessions provided by 4-H

FALL SHOW: OCTOBER 9-10, 2004

Celebrating our 30th Anniversary

Western Reserve Depression Glass Club
presents Cleveland's Semi-Annual
Depression Era Glass, Pottery & China Show and Sale

Sat., March 20, 2004 Sun., March 21, 2004
10:00 am - 5:00 pm 11:00 am - 4:00 pm

GLASS IDENTIFICATION

St. Sava Hall

2151 W. Wallings • Broadview Heights, Ohio

- Between Broadview & State Roads •
- Wallings Rd. Exit I-77 - 2 miles west •

RAFFLE Admission \$3.00 FOOD AVAILABLE

Cambridge • Heisey • Duncan Miller
Fostoria • Old Fenton • Akro Agate
McKee • Paden City • Westmoreland
Imperial • American Pottery • American China

Museum 2004

continued from page 6

the National Cambridge Collectors Inc. This tour has been arranged by the Cambridge/Guernsey County Visitors and Convention Bureau. We appreciate the opportunity to present the museum to a large spectrum of the tourism industry.

This season in the Feature Display Room, visitors will learn more about Cambridge Decalware and smoker's items thanks to Ron and Norma Hufford, and Frank and Vicki Wollenhaupt. They arrived on February 21st with boxes and boxes of items which were checked into the museum inventory and then placed on display.

The Museum Sample Room now features Cambridge Arms arrangements, candelabras, and Table Architecture. A bridal arrangement has been designed to copy an original Cambridge Glass Company photo which is also included in the display.

The Dining Room Display, adorned with Ebony/Gold Encrusted Hunt Scene and Lorna on loan from Rick and Cindy Jones, is already dazzling museum guests. Yes....we have walk-up visitors every time we are working in the museum. Many of them drop money in the donation jar. In fact, on Valentine's Day we

received a \$100 donation from one couple after their tour.

Mark Nye, NCC Archivist, will begin working on the Smith Research Library as soon as the auction glass is moved out of the room. The room has already been painted and the plaque and sign have been mounted in the hallway.

The museum inventory is also up to date. Jeff Ross has stepped in as the new inventory computer operator. We recently entered item #2943 into the system. After the 1998 flood, we were forced to re-enter every item as many of the labels were destroyed in the flood. This

means that 2,943 pieces have been entered and numbered since 1999.

The NCC display at Penny Court has also received an update. John Corl spent three days in Cambridge redesigning the display and cleaning the cases. John has once again outdone himself. The display looks great!

Thank you to everyone who has been working both on and off site to make our museum the best it can be! We are very fortunate to have a large group of volunteers ready and willing to go the extra mile. We sincerely appreciate your dedication!



Work Day at the Museum - February 21st

Meet Judy Rhoads: New Study Group Advisor

Several years ago, NCC created the post of Study Group Advisor in an effort to revitalize NCC Study Groups and improve communication. Ken Filippini held that position for several years. During that time, a meeting of representatives of Study Groups was begun at Convention to talk about ideas, issues, and generally get to know each other. During that time, also, several new study groups have been formed. It has been an exciting time with Study Groups experiencing growth and new strength.

Ken Filippini has stepped down from the position of Study Group Advisor in order to assume some new duties within NCC. I have been asked to assume that responsibility, and I am writing this to introduce myself to you.

My husband, Ken, and I have been collecting Cambridge glass for about 20 years, and we have been members of NCC and the Miami Valley (Ohio) Study Group for 15 years. Our Cambridge passions are Wildflower etch, and Ivy Ball Vases.

I look forward to seeing you and other members of your Study Groups at the Study Group meeting during Convention. If I can answer any questions or help you in any way between now and Convention, please do not hesitate to get in touch with me. My home phone number is 937-275-5735, and email address is kjrhoads@aol.com. Hope to see you at the Benefit Auction also! Sincerely,

Judy Rhoads.

The Marketplace:

VIDEOS

"The Crystal Lady" \$15.00

A video copy of an original Cambridge Glass Co. promotional film showing the making of a goblet in the Cambridge factory. 25 minutes, B&W.

NEW: Grand Opening Video \$15.00

A high-quality video record of the Grand Opening of The National Museum of Cambridge Glass. 25 minutes, Color.

SALT & PEPPER TOPS

Salt & Pepper Tops \$6.00 per pair

Polycarbon plastic, will fit most Cambridge shakers such as Rosepoint footed and flat-bottom shakers. Also fit Heisey Rose, Saturn, Plantation, Crystalite and some Orchid. Will fit some Anchor Hocking and Candlewick.

Order 10 or more pairs, pay only \$5 per pair

Books by Gene Florence

Very Rare Glassware (3rd Series) \$24.95

Very Rare Glassware (5th Series) \$24.95

Very Rare Glassware (8th Series) \$24.95

Elegant Glassware (8th edition) \$19.95

Glassware of the 40s-50s-60s (4th edition) \$19.95

Glassware of the 40s-50s-60s (5th edition) \$19.95

Stemware (Cordials) 1920s-1960s \$24.95

CONVENTION FAVORS

1995 Cranberry Ice Cascade Goblet \$5.00

1998 Yellow Irridized Cascade Goblet \$5.00

2000 Carnival Mt. Vernon Juice \$5.00

2001 Carnival Mt. Vernon Juice \$5.00

2003 Bluebell Square Sugar/Cigarette \$5.00

CONVENTION BOOKLETS

Convention Booklets \$5.00/year

• All NCC Conventions 1994 - 2003 •

**NCC Tote Bags
\$10.00**

Ordering Information

NCC Members get a 10% discount on all books so listed on page 17. There are no discounts on any other items.

SHIPPING & HANDLING RATES:

First item \$3.00
Each additional item \$1.00

SPECIAL SHIPPING:

- Scottie Dogs: \$10/pair for shipping
- Salt/Pepper Tops: \$3 shipping for any size order
- Jadite Tumblers: \$3 each, \$10 for a set of six
- Logo Pins: shipping included in price

OHIO RESIDENTS:

PLEASE ADD 7.5% SALES TAX

Payments by check or money order only.

Send orders to:

NATIONAL CAMBRIDGE COLLECTORS, INC.
PO BOX 416
CAMBRIDGE, OH 43725

*Be sure to include your complete shipping address and phone number.
Thanks!*

SCOTTY DOGS

Red Scotty Dog Bookends are still available! \$100.00/pair
2000 fund raiser for NCC Museum; made in original Cambridge molds by Mosser. Marked NCC 2000.

NCC LOGO PINS

Show your pride in being a Cambridge collector and a member of NCC.

Only \$5.00 includes shipping



Crystal Ball

Table of Contents for
The Crystal Ball

Issues #69 - #320
(Jan 1979 - Dec 1999)

Only \$2.00

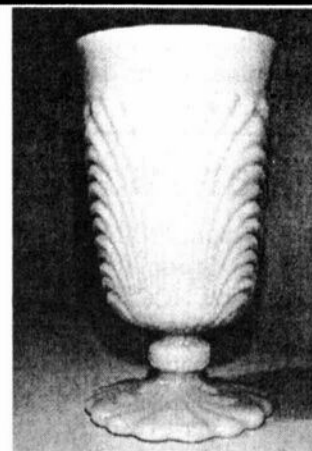
Back Issues of
The Crystal Ball

Sold by the year:

1999 • 2000 • 2001 • 2002

\$5.00 per year

Jadite Tumblers



\$20 each; set of 6 for \$100

plus shipping charges of
\$3 each or \$10 for the set of 6

Made for the NCC by Mosser Glass
Marked on the bottom: NCC 2002

The Marketplace:

Books for Sale

FOR ORDERING INFORMATION, SEE FACING PAGE

NCC Members receive a 10% discount on the following books:

1910 Near Cut	108-page reprint of the 1910 Catalog Paperback with price guide	\$14.95
1930-34 Catalog	250-page reprint of 1930 thru 1934 Catalogs Paperback with price guide	\$14.95
1930-34 Index	for above	\$2.00
1949-53 Catalog	300-page reprint of 1949 thru 1953 Catalogs Paperback with price guide	\$14.95
1956-58 Catalog	160-page reprint of 1956 thru 1958 Catalogs Paperback (no price guide)	\$12.95
Caprice	200 pages; lists colors, decorations, reproductions, etc. Paperback with price guide	\$19.95
Colors in Cambridge Glass	128 pages including 60 color plates; fully indexed Hard-cover with price guide	\$19.95
Decorates	136-page Paperback (no price guide)	\$14.95
Etchings, Volume 1	by Miami Valley Study Group; 84 pages Paperback (no price guide)	\$14.95
Etchings, Non-Catalogued	70-page Paperback (no price guide)	\$12.95
Etching: Blossom Time	26-page Paperback (no price guide)	\$7.95
Etching: Candlelight	30-page Paperback (no price guide)	\$7.95
Etching: Chantilly	44-page Paperback (no price guide)	\$7.95
Etching: Diane	53-page Paperback (no price guide)	\$7.95
Etching: Elaine	64-page Paperback (no price guide)	\$9.95
Etching: Portia	57-page Paperback (no price guide)	\$7.95
Etching: Wildflower	42-page Paperback (no price guide)	\$7.95
Rock Crystal Engravings	94-page Paperback (no price guide)	\$14.95
Rosepoint	by Mark Nye; a comprehensive guide to Rosepoint Showing all blanks plus history of the line. 94 pages; Paperback with price guide	\$14.95
Rosepoint Price Guide	Values as of 2000 (<i>This is included with the Rosepoint Book listed above. Price is for the price guide when purchased separately</i>)	\$5.00

The following books do not offer any discounts:

NEW! The Glass Candlestick Book	by Tom Felt and Elaine & Rich Stoer Volume I: Candlesticks from Akro Agate thru Fenton Hardback, 254 pages, full color.	\$24.95
Charleton Decorations	by Michael & Lori Palmer; a comprehensive guide to Charleton; full-color. Hard-cover (no price guide)	\$29.95
1903 Catalog	106-page reprint by Harold & Judy Bennett Paperback (no price guide)	\$5.00
1927-29 Catalog	66-page reprint by Bill & Phyllis Smith Paperback with price guide	\$9.95
1940 Catalog	250-page reprint of the largest Cambridge Catalog (<i>loose 3-hole punched pages</i>) No price guide	\$25.00
1940 Catalog Binder	for above; with Cambridge logo on front	\$5.00
Reflections	by the Degenhart Paperweight & Glass Museum A history of Guernsey County glass production. 45-page Paperback	\$5.00
Stemware	by Mark Nye; shows all Cambridge stemware lines 167 page Paperback (no price guide)	\$19.95
Universal Dinnerware	by Timothy J. Smith. Includes Cambridge Art Pottery, Guernsey earthenware, Oxford Pottery and more. 176 pages, color, Paperback	\$29.95
Welker - Volume I	by Lynn & Mary Welker; reprints from several Cambridge Catalogs. 120 pages, Paperback (no price guide)	\$10.00
Welker - Volume II	by Lynn & Mary Welker; 15 color plates showing choice Pieces from their vast collection	\$5.95



Stems Without Thorns

As the world's largest supplier of old & new china, crystal, silver and collectibles, Replacements, Ltd. has more than 700 different patterns of Cambridge crystal.

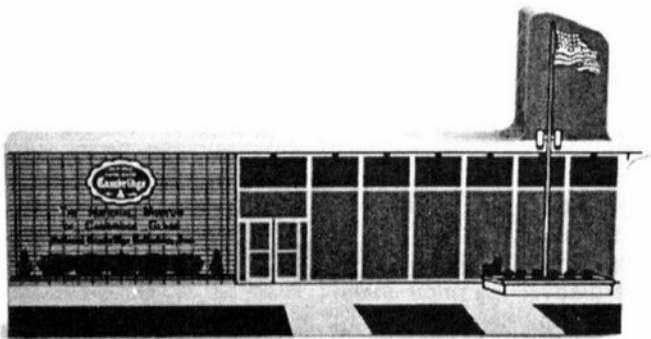
And however much we enjoy selling pieces that were once thought irreplaceable, we love buying them as well. Thanks to people like you, our crystal inventory currently numbers in the hundreds of thousands, and the numbers keep growing every year.

So, if you've been unsuccessfully searching for that elusive piece of Cambridge — or any other type of fine crystal — call us for a free list of pieces available in your pattern. And, if you're looking to sell pieces you currently have, we can help you there, too.

REPLACEMENTS, LTD.
China, Crystal & Silver • Old & New

1-800-REPLACE
(1-800-737-5223)

1089 Knox Road,
PO Box 26029, Dept. CB,
Greensboro, NC 27420
www.replacements.com



THE CAT'S MEOW NCC MUSEUM COLLECTIBLES

for sale by the
Elegant Glass Collectors Study Group

\$20 each... plus \$5 shipping

Please contact Bill Dufft at (610) 777-3869
or billnvon@aol.com

Wanted:

FIND GLASS HERE... a "Wants" ad like this costs less than \$3, and reaches over 1,000 Cambridge collectors. You may locate that one elusive piece, or fill out a set!

For Sale:

SELL YOUR GLASS HERE... an ad like this costs just \$2, and reaches over 1,000 Cambridge collectors.

DEALER DIRECTORY

THE GLASS URN

456 West Main Street, suite G
Mesa, AZ 85201 480-833-2702
480-838-5936

Mail Order Shows Open Shop

CAMBRIDGE, FOSTORIA, HEISEY, etc.

THE DEGENHART PAPERWEIGHT AND GLASS MUSEUM, INC.

P.O. Box 186
Cambridge, OH 43725-0186

Intersection of US 22 & I-77
Phone 740-432-2626

GREEN ACRES FARM

2678 Hazelton Etna Rd.
Pataskala, OH 43062
(State Route 310 North)

Sat & Sun 1-7 pm 740-927-1882
Antiques, Crystal Glass & Collectibles

GLASS FROM THE PAST

Maureen Gillis



www.cyberattic.com/~glassfrompast/
email: tomopartners@snet.net
tel: 860-526-3413

Fostoria Glass Society of America

Traveling Ambassadors
Ralph & Joyce Rider

For info: 817-545-5856
E-mail: r.rider@sbcglobal.net

YOUR AD COULD BE HERE
ADVERTISE YOUR SHOP OR SERVICE
JUST \$24 A YEAR
SEE INSIDE FRONT COVER FOR DETAILS

Remember The Century Club in 2004

DEALER DIRECTORY

When writing to these dealers, please enclose SASE

DAUGHERTY'S ANTIQUES
Jerry and Shirley
Antiques and Collectibles • Mostly Glass

www.daughertys-antiques.com
e-mail: sdaugh2515@daughertys-antiques.com

Shows & Mail Orders 2515 Cheshire North
(402) 423-7426 evenings Lincoln NE 68512

Milbra's Crystal Buy & Sell
Replacement and Matching Specializing in
Cambridge,
Milbra Long (817) 645-6066 Fostoria, Heisy
Emily Seate (817) 294 9837 and others.
PO Box 784
Cleburne TX 76033
E-mail: longseat@sbcglobal.net
www.fostoriacrystal.com

BARNESVILLE ANTIQUE MALL
open 7 days, 8 - 5
Roger, Nancy and Brian Mayhugh
Owners
202 N. Chestnut St. 740-425-2435
Barnesville, Ohio 43713 3 floors
EXIT 202 OFF I-70 • always buying & selling antiques

THE TEAM
ESTATE SALES
Liquidations • Appraisals
Consignments • Senior Services
Estate sales with some style and a bit of flair
ED TUTEN 7007 McVay Place
901-758-2659 Memphis, TN 38119
www.teamestatesale.com

THE GLASS CUPBOARD
P.O. Box 652
West End, North Carolina 27376

Marcia Ellis Cambridge Show
910-673-2884 and Mail Order

FINDER'S ANTIQUE HOUSE
3769 Highway 29 North
Danville, VA 24540
(434) 836 6782
Cambridge • Heisey • Duncan • Fostoria
Open Wed - Sat 11:00 to 5:00 (seasonal hours apply)
Monday thru Saturday 10 - 5:30 Sunday 12 - 5:50


Bogart's Antiques
BUY - SELL - APPRAISE - REFINISH
CANE & REED CHAIRS - CLOCK REPAIR
Jack & Sharon Bogart State Route 40
740 872-4514 shop 7527 East Pike
740 826-7419 home Norwich, OH 43767

BAKER FAMILY MUSEUM
805 CUMBERLAND ST.
CALDWELL, OHIO 43724
740- 732-6410
Mon & Thurs 9-4; Fri - Sat 9-5
Call for Sunday Hours

CRYSTALLINE COLORS
Buy, Sell and Appreciate
Cambridge and other Elegant Glass
I Love Cambridge
Lynne R. Franks 216 661-7382
Ohio Antique Malls

CRYSTAL LADY
Thurs. - Sat. 11-5
1817 Vinton St. Omaha, NE 68108
Bill, Joann and Marcie Hagerty
Shop 402 341-0643 Home 402-391-6730
Specializing in Elegant Glass & Collectibles
www.crystalladyantiques.com

Storck's Antiques
Rick & Joyce
Antiques & Collectibles • Glass & Pottery
Specializing in Fenton, Imperial & Cambridge
Shows & Mail Orders • Storck1@aol.com
Greenfield, MN 55373 • (763) 477-6415



Mother Drucker's
Penny Drucker
Specializing in Elegant Glassware
Shows and Mail Order
P.O. Box 50261 Phone: 949-551-5529
Irvine, CA 92619 888-MDRUCKER
Website: http://motherdruckers.com

Deborah Maggard, Antiques
Specializing in Cambridge Glass,
American Hand Made Glass & Victorian Art Glass
Please stop and see our extensive collection of
Cambridge Glass at Riverfront Antique Mall in
New Philadelphia, Ohio (I-77, exit 81)
Booths 805 and 812
You won't be disappointed.
We buy one piece or entire collections.
Please contact me at 440-247-5632
and leave a message, or e-mail at
debmaggard@adelphia.net
P.O. Box 211
Chagrin Falls, OH 44022

JUDY'S ANTIQUES
Judy Bennett
422 S. Ninth Street (corner of Jefferson)
Cambridge, Ohio 43725
Business (740) 432 5855
Residence (740) 432 3045
CAMBRIDGE GLASS MY SPECIALTY

BRIDGES THRU TIME
Elegant Glassware & Antique Collectibles
Located at Alvin Antique Center
2500 South Loop 35 • Alvin, TX 77511
For Web-Storefront and Auctions
Website: www.epier.com/store/BridgesThruTime
E-mail: cambridge@houston.rr.com

THE JONES GROUP
Cindy Jones
Buy and Sell Cambridge Glass
650 Riverside Drive
Sleepy Hollow, NY 10591
914-631-1656 or E-mail Caprice0@aol.com


Mary Jane's Antiques
Early American Pattern Glass
Depression Era Items
2653 Burgener Drive 217-422-5453
Decatur, IL 62521 mjthumes@aol.com

THE GLASS HOUSE ANTIQUE MALL
Furniture, Pottery, Glass
Antiques and Collectibles
I-70 Exit 146, East on SR 40
8825 E. Pike
Norwich OH 43767 TEL 740-872-3799

GATEWAY ANTIQUE MALL, INC.
JUST NW OF MINNEAPOLIS-ST. PAUL, MN
Next to Super 8 in Rogers, MN
(I 94/101 intersection)
85 Dealers • 7 days; 10 - 6 • 612-428-8286
ELAINE STORCK, OWNER/DIRECTOR

ISAACS ANTIQUES
(740) 826-4015
See our booths in Penny Court Mall in
Cambridge and at White Pillars Antique Mall
(Route 40, one mile west of
I-70 Norwich, OH • Exit #164)

PENNY COURT MALL
637 Wheeling Avenue
Cambridge, Ohio
100 Booths 15,000 sq ft
HOURS: Daily 10-6 Sunday Noon-5
Closed: Easter, Thanksgiving, Christmas
Call for other holiday hours 740 432-4369

MARGARET LANE ANTIQUES
2 E. Main St. New Concord, OH 43762
Lynn Welker (740) 826-7414
Cambridge Glass Matching Service
Hours: Mon-Fri 10-12 AM, 1-5 PM
or by appointment

ALADDIN LAMP BOOKS
Free History of Aladdin Lamps
Figurine Lamps Wanted
Bill & Treva Courter
3935 Kelley Rd. Kevil, KY 42053
Phone 270-488-2116 FAX 270-488 2055

2004 Convention Motel Information

All of these motels are located in Cambridge at Exit 178, Ohio route 209 off Interstate 70. Remember to mention that you are attending the National Cambridge Collectors Convention. There are limited rooms available at these rates. When those rooms are booked, rates may be higher.

- **AMERIHOST** (Indoor pool, in-room amenities)
State Route 209 South
740 439-1505
\$59 single or double includes continental breakfast
- **BEST WESTERN** (Outdoor pool, in-room amenities)
1945 Southgate Parkway
740 439-3581
\$59.95 single or double includes continental bkfst
- **HOLIDAY INN** (Outdoor pool, in-room amenities)
2248 Southgate Parkway
740 432-7313
\$69/night [2 or more night stay]
- **COMFORT INN** (Indoor Pool, in-room amenities)
2327 Southgate Parkway
740 435-3200
\$60 single or double includes continental breakfast
- **DAYS INN** (Outdoor pool, in-room amenities)
2328 Southgate Parkway
740 432-5691
\$59 single or double includes continental breakfast
Book before June 15 for this rate
- **BUDGET HOST – DEER CREEK** (Indoor pool)
2325 Southgate Parkway
740 432-6391
Discounts available – call for rates
Weekly rates available

A Great Idea for Study Groups



Freeman and Jeannie Moore, of Flower Mound, TX, erected this yard sign to help members of the North Texas Study Group find their way to the Moore home for the group's January meeting. Well done!

NATIONAL CAMBRIDGE COLLECTORS, INC.

P.O. BOX 416

CAMBRIDGE OH 43725-0416

Website: www.cambridgeglass.org

E-mail: NCCcrystalball@aol.com

FIRST CLASS MAIL
US POSTAGE
PAID
PERMIT No. 3
CUMBERLAND OH 43732

FIRST CLASS MAIL

*Membership Renewal Notice:
If the date above your name
is 03-04, this is your last issue,
and your NCC Membership has expired.
Please renew today.*