



Cambridge Crystal Ball

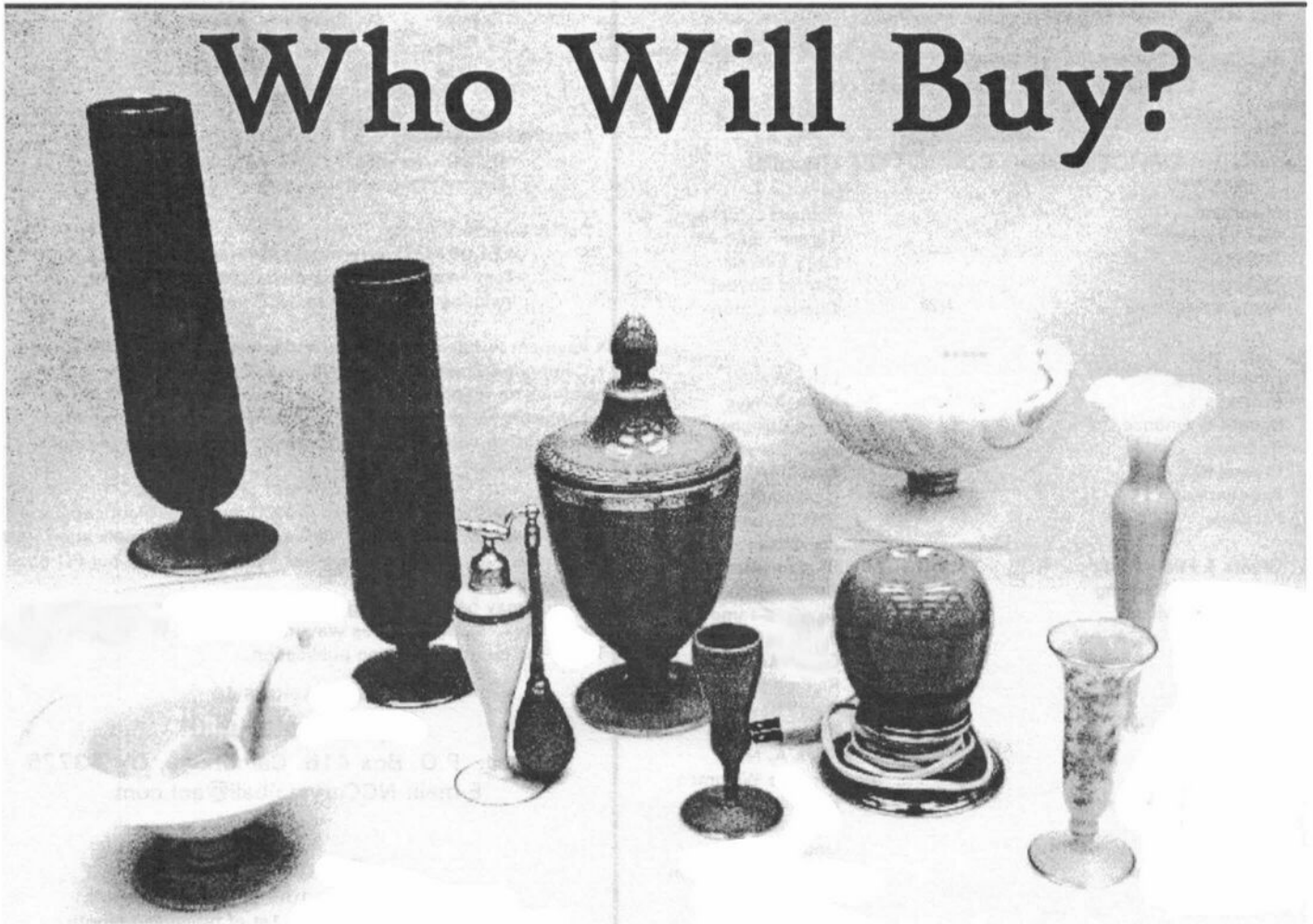
Published monthly by National Cambridge Collectors, Inc.
to encourage and report the discovery of the elegant and boundless product of the
Cambridge Glass Company of Cambridge, Ohio

Issue No. 369

January, 2004

See Crystal Ball photos on-line, in full color at www.crystalballphotos.org (password on page 5)

Who Will Buy?



In this issue...

2004 Auction List

National Cambridge Collectors, Inc.

PO Box 416
Cambridge, OH 43725-0416

Please notify us immediately of any address change.

Contacts:

President Rick Jones	(914) 631-1656
Secretary Larry Everett	(937) 675-6491
Crystal Ball Editor Alex Citron	(434) 296-2531
NCC Museum (phone)	(740) 432-4245
(fax)	(740) 439-9223

Membership

Membership is available for individuals at \$20.00 per year, and an additional \$3.00 for associate members (12 years of age and older, residing in the same household). Of the \$20.00 dues, \$14.00 is considered the cost of a one-year subscription to The Cambridge Crystal Ball. All members have voting rights, but only one issue of The Crystal Ball will be mailed to each member household.

Multi-year memberships are available:
2 years for \$38.00; 3 years for \$56.00.

2003-2004

OFFICERS AND COMMITTEE CHAIRS

President	Richard D. Jones
Vice-President	Tarzan Deel, Jr.
Secretary	Larry Everett
Treasurer	Dennis Snyder
Sergeant-at-Arms	Charles Upton

.....

Acquisitions	Lynn Welker
Archives	Mark A. Nye
Budget & Finance	Mike Strebler
By-Laws	Alex Citron
Crystal Ball	Alex Citron
Endowment	George Stamper
Facilities	Carl Beynon
	Joe Miller
	Sharon Miller
Grants & Fundraising	Doug Ingraham
Long-Range Planning	George Stamper
Member Services	Jeff Ross
Membership	Cindy Arent
Museum	Richard D. Jones
Nominating	David Ray
Program	Bill Hagerty
Projects	Mark A. Nye
Publications	Lorraine Weinman
Publicity	Ken Filippini
Study Group Advisor	Linda Roberts
Technology	Linda Roberts
Webmaster	Shelley Cole Citron
2004 Convention	Dorothy Rieker
2004 Auction	Squeek Rieker
	Lynn Welker
	Mary Beth Hackett
2004 Glass Show & Sale	Joy McFadden
	Larry Everett
2004 Glass Dash	Susan Everett

Board of Directors:

Cindy Arent; Tarzan Deel, Jr.; Larry Everett;
Ken Filippini; Rick Jones; Sharon Miller;
Dennis Snyder; George Stamper; Mike Strebler;
Charles Upton; Lorraine Weinman; Lynn Welker

Cambridge Crystal Ball

The official publication of National Cambridge Collectors, Inc., a non-profit corporation with tax-exempt status. Published monthly for the benefit of its members. All rights reserved; reproduction in whole or part without written permission of National Cambridge Collectors, Inc., and the author is prohibited.

Executive Editor	Alex P. Citron
Research Editor	Les Hansen
Advertising Manager	Jeannie Moore
Circulation	Sharon & Joe Miller

Advertising Rates

Display Advertising (camera-ready):

Full Page	\$50.00
3/4 Page	\$40.00
1/2 Page	\$30.00
1/4 Page	\$20.00
1/8 Page	\$15.00

(Add \$5.00 for each photograph)

Classified Advertising:

10 cents per word; \$2.00 minimum
(Abbreviations and initials count as words)

Dealer Directory:

\$24.00 for twelve-month contract
Text limited by standard box size (see page 19)
Includes FREE listing on NCC website

- Payment in full must be received before advertising will be run.
- Cambridge Crystal Ball and National Cambridge Collectors, Inc., assumes no responsibility for items advertised and will not be responsible for errors in price, description or other information.
- Advertising copy may be submitted to us by e-mail or regular mail as follows:

Ad copy may be sent by e-mail to NCCcrystalball@aol.com, and must be sent by the 10th of the month preceding publication. Ad will not be run until your check has been received at our PO Box.

Ad copy may be sent by regular mail, along with your check, to our PO Box. Copy sent this way must arrive at our PO Box by the 1st of the month preceding publication.

Submissions to

The Crystal Ball

By mail: P.O. Box 416 Cambridge, OH 43725
E-mail: NCCcrystalball@aol.com

Deadlines:

Ad copy by e-mail: 10th of preceding month
Ad copy by regular mail: 1st of preceding month
Articles, study group reports, etc.: 10th of preceding month

MEMBERS ONLY

Visit the "Members Only" section of the NCC's website at cambridgeglass.org/NCCmembers

Features available only to NCC Members include:

Reprints of Research Articles

Minutes of Board Meetings

User name: NCC

Password: TriangleC



President's Message:

Year of "The Tour"

Each year, either in December or January, I tend to do a "year in review" type of column that either looks back, looks forward, or a combination of them both. This December as I write the January column, I'm getting reflective on 2003 ... quite a year!

In 2002, we had a lot of passion and emotion in support of the opening of our new National Museum of Cambridge Glass. This year we moved kind of into an implementation phase ... the museum is an ongoing operating concern.

Our first full year since the Grand Opening is now behind us and it can be regarded as no less than an overwhelming success. We are a success on many levels:

- We hosted about 35 separate bus tours
- We sold a record number of books
- We opened a small gift shop with donated glass and we're selling out!
- Our museum workers from our original museum returned and "resumed their posts" - they were even more enthusiastic and friendly - welcome back Betty and Dorothy.
- Great feedback was given to our historical display
- The rotating display room had a killer display that included Decorated enamels and an amazing Firenze collection. Thanks to Linda Roberts, Barbara Wyrick and Georgia Otten.
- The dining room display was lovingly coordinated by Cindy Arent.
- The Sample Room included the generous loan of a very rare Milk Glass Swan Punch Bowl by Jim and Nancy Finley.

All in all, it was a spectacular year!

The volume of tours is a big deal for several reasons. If I were an out-of-town member (which I guess I am), I could wonder ... "Why is this relevant to me?" Good question!

NCC is a national preservation and education organization. By design, it provides many benefits to the members and to the public at large. Among these is spreading the history, beauty and heritage of Cambridge Glass. For some members, this takes the form of an economic benefit - "holds the value of my collection." Others may like being part of preservation groups where sharing knowledge and education is the only motivation they need. The reality for most members I've talked to is an answer somewhere in between.

Cambridge glass is truly beautiful. It is highly collectible. It is a great conversation starter whether your guests are Cambridge aficionados or not. It is at times practical, at times frivolous and at times, just simply magnificent. Sharing all these feelings gets your juices flowing. What a nice thing to share!

One of the goals of having our museum in its present location was to be seen as more a part of the Cambridge community. It's working! Our relationship with the Chamber of Commerce has never been better. Ohio's tourism board is also promoting tours of the NCC Museum. Response has been at times - overwhelming.

We are so grateful to have dedicated local members who give generously of their time to make our visitors feel special (bus groups of 50 people have been the norm!). We're lucky to have Cindy, Lynn, Charlie, Carl, Sharon, Linda, Richie, Shirley, Jeff, Jill and all the others who have helped make our guests learn a lot about the richness of Cambridge Glass.

As I reflect back on the year in review, I would be remiss if I did not again acknowledge the sad passing of Harold Bennett who built a wonderful museum as a testament to his love of Cambridge Glass. How wonderful that the Bennetts shared this all with us. Our thoughts are with Judy this holiday season.

It is sad to say goodbye to any of our Cambridge friends. Let's pause at the dawn of a new year to lovingly remember the wisdom and joy they shared with us, as Lisa Strebler so eloquently did last month in her tribute to the incomparable Virginia Houston.

For each Cambridge member we lose, we must replace them with the budding novice - those seeking to know the depth of knowledge and love of Cambridge that many of us feel. To that end, 2003 had a record number of regional show sales tables. It is a great gift to help introduce people to the benefits of NCC and why supporting preservation is fundamental to all of our enjoyment of Cambridge Glass.

As I look forward to 2004, I recommit myself to helping take this preservation forward. No doubt, we still have much to do in this club and we are uniquely blessed with many caring members looking for new ways to help. It will be great to tap into these new resources to keep us fresh and motivated. I can't wait! Happy New Year to all.

Events:

If you know about any upcoming glass shows or other glass events, please pass the word on to us at least six to eight weeks before the show dates. These listings are free of charge.

Mark Your Calendar



- > Quarterly Meeting
Friday, March 5th
- > NCC Auction
Saturday, March 6th
- > NCC Convention
Thursday, June 24 thru
Saturday, June 26
- > Quarterly Meeting
Saturday, August 16
(Tentative)
- > Quarterly Meeting
Saturday, November 6
(Tentative)

Upcoming Glass Shows

February 1, 2004:
Long Island Antiques &
Collectibles Market
Freeport, NY
Call (516) 798-0492

February 7-8, 2004:
South Florida DG Show & Sale
Ft. Lauderdale, FL
Call (305)884-0335
E-mail:
fboches@cheshirecatantiques.com

February 14-15, 2004:
Washburn's San Antonio Show
Live Oak, TX
Call (210) 599-0635
E-mail: WashburnK@aol.com

February 20-22, 2004:
Houston DG Show
Rosenburg, TX
Call (409)762-8358

February 28-29, 2004:
Arkansas Glasshoppers Show
Little Rock, AR
Call (501) 375-0435
E-mail: esthermitchell@msn.com

March 5-6, 2004:
Garden State DG Club Show
Laurence Harbor, NJ
E-mail: trash-to-treasures@rcn.com

March 13-14, 2004:
20-30-40 Society's
Chicagoland DG Show
North Lake, IL
E-mail: schmidt.tim@comcast.net

March 27-28, 2004:
Nutmeg DG Show
Southington, CT
Call (860)-559-6313
E-mail: eemorse@attbi.com

ANNUAL WINTER Antiques and Collectibles Market Sunday, February 1st, 2004

10:00 am - 5:00 pm

FREEPORT RECREATIONAL CENTER
130 EAST MERRICK ROAD
FREEPORT, LI, NEW YORK

DONATION \$3.50
ADMIT 2 AT \$3 EACH
WITH THIS FLYER

OVER 45 DEALERS
FOOD ON PREMISES
FREE PARKING

Sponsored by
The Long Island Depression Glass Society, Ltd.

For information call (516) 798-0492

First look at the 2004 Auction:



At left: Swans, Muddlers and Bridge Hounds

Below: All green...



Above: Just a few of the Flower Frogs



Below: Candlesticks of many kinds



*Photos on-line in full color at:
www.crystalballphotos.org
password: elaine*

People & Places:

A Picture Is Worth A Thousand Words

by Ken Filippini

Last month at the Midland Park, NJ Public Library, books were not the only educational items on the shelves. The library has a display case (most libraries do) which they try to fill each month with something both visually interesting and thought provoking. When my wife, Jane, approached the librarian with the concept of a Cambridge Glass display, she was greeted with warm enthusiasm. Of course, the librarian had no idea what Cambridge Glass was or even that Jane was talking about Cambridge, Ohio. However, she agreed to let us set up, I imagine with the hope it would be worthwhile. Setup day came, and we started to load the case. We were just getting started going when we already attracted a small group of interested onlookers. Each piece we unwrapped elicited novel questions, comments, and an awareness of like items seen before. By the time setup was finished, an adhoc discussion had taken place, and an excited librarian was extremely pleased with the display.

The display consisted of the following:

Pink Everglade console bowl # 745
Amber Tally Ho pitcher 1402 / 49
Center handled tray - pink etched
Lorna 3400 / 10
Royal Blue Nautilus decanter # 3450
Jade 9" twist candlesticks
Rose Point 2-handled oval bowl
Green Charleton decorated mint dish
Gold encrusted Diane vase # 278
Alpine Blue Caprice bowl # 66
Carmen vase # 1242
Green handled basket # 119
Amber ice bucket etched Cleo # 851

continued on page 20

Membership Approves By-Laws Change

At the November Quarterly Meeting, the membership of the NCC gave its approval to an amendment to the By-laws.

The amendment, originally proposed by Frank Wollenhaupt, provides for a new system by which Board vacancies will be filled.

In most cases, vacancies on the NCC Board will now be filled by the first runner-up from the most recent Board election.

The new amendment, along with the complete NCC By-laws, will be published in next month's Crystal Ball.

**NCC's new book on the Cambridge
Cuttings (Rock Crystal) will debut
at the March 2004 Auction!!!**

South Florida Depression Glass Club 30th Annual Show & Sale

*Glass Repair
Snack Bar
Door Prizes*

*American Elegant & Depression Glass,
Dinnerware & Pottery*

February 7 & 8, 2004

War Memorial Auditorium

800 N.E. 8th Street

Ft. Lauderdale, FL

*....Special Guests....
Gene and Cathy Florence
well-known authors of
many books on
Depression-Era Glassware*

Saturday 10 am - 5 pm

Sunday 10 am - 4 pm

Admission \$5.00

(50 cents off with this ad)

Directions: I-95 to Sunrise Blvd.
East; turn south on US 1 for two
blocks.

Information:
305-884-0335
fboches@cheshireantiques.com

**The National Museum of Cambridge Glass
is currently closed for the season.**

See you in April!

National Cambridge Collectors, Inc.

2004 Benefit Auction

Saturday, March 6, 2004

Pritchard-Laughlin Civic Center • US 40, West • Cambridge, Ohio

INFORMATION

Preview at 9:00 a.m.

Craig Connelly, Auctioneer

Auction starts at 10:00 a.m.

Admission: \$2.00

All glass in the auction is guaranteed to be Cambridge. The Auction Committee has checked all glass carefully for verification and damage. Any piece purchased should be examined immediately by the purchaser, and returned within five items if not as represented. All damages are indicated in this catalog; last minute changes or addenda will be announced by the Auction Committee immediately prior to the auction. If no color is indicated herein, the item is crystal.

TERMS: Payment is expected in cash the day of the sale; checks will be accepted with proper identification.

CATALOG: Lots will be sold in the order printed herein. A number in parenthesis () at the end of a listing indicates the number of that item available for sale. The auctioneer will announce whether such multiples are being sold individually or as a lot. If multiple items are being sold individually, a winning bidder may take any number available. If the catalog indicates "set," "pair" or a similar term, the lot is sold as such. Lots indicated by an asterisk (*) and bold type are donated items; the entire purchase price for these lots goes to the NCC.

MAIL BIDS: All absentee bids must be accompanied by a separate check for the maximum bid on each lot. Checks are to be made payable to: National Cambridge Collectors, Inc. Bids will be executed secretly and a winning bidder will pay only the final auction price. Refunds for bid overages will be sent to bidders immediately after the auction. If you are not successful, you will be notified by mail and your check(s) returned to you. All absentee bids must be accompanied by a stamped, self-addressed envelope.

SHIPPING: Absentee bidders who wish their items shipped may include a blank check for shipping charges, or may call (740) 453-6403 or (614) 777-8064 within a few days after the auction to make shipping arrangements. Items can be shipped to street addresses only; NO P.O. BOXES.

MAILING ADDRESS: All absentee bids must be mailed to:

Lynn Welker
2 East Main Street
New Concord, OH 43762

BIDS MUST BE RECEIVED BY THURSDAY, MARCH 5th TO BE ELIGIBLE

MOTEL RESERVATIONS: The following is a partial list of motels in Cambridge. Make your reservations early. These are published rates, which may or may not be available for the specific auction dates.

Comfort Inn (from \$58.49)	(740) 435-3200
Holiday Inn (from \$69.70)	(866) 270-5112
Best Western (from \$44.95)	(740) 439-3581
Amerihost (from \$50.99)	(800) 434-5800
Days Inn (from \$36.75)	(740) 432-5691
Deer Creek Inn (from 45.95)	(740) 432-6391
Travelodge (from \$49.50)	(740) 432-7375

QUARTERLY MEETING: The Quarterly Meeting of the NCC will be held on Friday, March 5 at 7:30 p.m. A preview of the auction glass will be presented. Show & Tell glass is welcome at the meeting.

Additional copies of this catalog are \$1, postpaid or are included with admission to the auction.

- 1 _____ #1040 Gold Krystol 3" Swan, Style II, signed
- 2 _____ #1066 Amber 7-oz. Sherbets with Optic (3)
- 3 _____ #41 Forest Green Martha Washington 9-1/2" Covered Urn
- 4 _____ #3035 Carmen 3-oz. Cocktails (3)
- 5 _____ #3 Moonlight Blue 5" Star Candleholder
- 6 _____ P.499 Mandarin Gold Pristine 6-1/2" Calla Lily Candlesticks (pair)
- 7 _____ #1070 Royal Blue 2-oz. Pinch Whiskies (6)
- 8 _____ #1307 Crystal 6-1/2" 3-Lite Candlestick, Etch #760 Rose Chintz
- 9 _____ #3105 Crystal Pressed Rosepoint Tall Sherbets (2)
- 10 _____ #3797/80 Ebon Cambridge Square 8" Footed Bud Vase
- 11 _____ #8701 Peach-blo 10-oz. Tumbler, Etch Cleo
- 12 _____ #3135 Tahoe Blue 12-oz. Footed Tumbler
- 13 _____ #47 Primrose 6-1/2" Footed Mayonnaise with Ladle
- 14* _____ **5-Piece Stackaway Ashtray Set – (4) Moonlight Blue Ashtrays on Wooden Base**
- 15 _____ #3400/141 Crystal 80-oz. Doulton Pitcher with Forest Green Handle
- 16 _____ #518 Crystal 8-1/2" Draped Lady Figure Flower Holder
- 17 _____ #3500/148 Crystal 6" Footed Comport, Silver Floral Decorated
- 18 _____ #3400/638 Crystal 6" 3-Lite Keyhole Candelabra (pair)
- 19 _____ #3575 Odd Color Green Stradivari/Regency Cocktail, Unusual
- 20 _____ #3900/33 Crystal 13" 3-Footed Torte Plate, Etch Chantilly
- 21 _____ #3797 Crystal Cambridge Square 12-oz. Goblets (4)
- 22 _____ SS#18 Crown Tuscan 10" 3-Toed Seashell Bowl, Charleton Gardenia Decoration, Gold Trim
- 23 _____ #274 Crystal 10" Footed Bud Vase, Etch Elaine
- 24 _____ #319/B/2 Smoke Georgian Basket, Smoke Handle
- 25 _____ #519 Peach-blo 2-1/2-oz. Mushroom Tumbler, Etch #731 Rosalie, Unusual
- 26 _____ #1402/37 Forest Green Tally-Ho 2-1/2-oz. Handled Tumblers (3)
- 27 _____ #1066 Crystal 2-oz. Sherry, Etch Portia, Rare
- 28 _____ Azurite Perfume Lamp, Black Enamel Trim, Original Nickle-Plated Fittings
- 29 _____ #3011/13 Forest Green 1-oz. Nude Brandy, Crystal Stem and Foot
- 30 _____ #3011/9 Crown Tuscan 3-oz. Nude Cocktail with Mandarin Gold Bowl
- 31 _____ #3011/3 Carmen Nude Saucer Champagne, Crystal Stem and Foot
- 32* _____ **#870 Amber Decagon 11" Center-Handled Sandwich Tray, Etch Cleo**
- 33 _____ #1309 Gold Krystol 5" Globe Vase, Etch Apple Blossom in Gold Filigree Holder, Unusual
- 34 _____ #1402/94 Crystal Tally-Ho 12" Celery, Gold Encrusted Elaine Etch
- 35 _____ #1138 Crystal 8-1/2" Seagull Flower Holder
- 36 _____ #61 Willow Blue Martha Washington 3-1/2-oz. Cocktail, Tall, Unusual
- 37 _____ #1 Emerald Green 4-1/2" Twist Muddler
- 38 _____ #1402/78 Crystal Tally-Ho 6-oz. Punch Mug, Engraved #690
- 39 _____ #1041 Crystal 4-1/2" Swan, Style III
- 40 _____ P.430 Crystal 12" Bowl, Elaborate Rock Crystal Engraved (has original labels showing different stages of cutting), Very Rare
- 41 _____ #3500/74 Moonlight Blue 4" Ram's Head Candlesticks (pair)
- 42 _____ #1206 Amethyst 76-oz. Twisted-Optic Pitcher and (4) Matching 12-oz. Tumblers
- 43 _____ P.476/169/486/485 Crystal Pristine Punch Bowl, Underplate, (16) 6-oz. Cups, and Ladle
- 44 _____ #25 Goldenrod Martha Washington 9-1/2" Flip Bowl, Rare Color
- 45* _____ **SS#33 Crown Tuscan Seashell 4" 3-Toed Ashtray**
- 46 _____ #1371 Emerald Green Bridge Hound
- 47 _____ #152 Crystal 7-oz. Marmalade and Cover, Etch #3 (horse and man), Rare Etching
- 48 _____ #2759 Crystal 5" 3-Prong Mini Candlestick
- 49 _____ #3130 Gold Krystol 3-oz. Cocktails, Etch Apple Blossom (4)
- 50 _____ #6004 Crown Tuscan 5" Footed Vase, Gold Encrusted Rosepoint Etch
- 51 _____ #168 Avocado Plainware 10" Center-Handled Sandwich Tray
- 52 _____ #3400/38 Royal Blue 12-oz. Tumbler, Etch Lorna, Unusual
- 53 _____ #3400/4 Crystal 12" 4-Toed Flared Bowl, Etch Diane
- 54 _____ SS#110 Crown Tuscan Seashell 4-1/2-oz. Seafood Cocktails (4)
- 55 _____ #1128 Crystal Scotty Dog Bookend with Satin Finish
- 56 _____ #104 Royal Blue Mt. Vernon 12" 5-Part Celery and Relish
- 57 _____ #680 Peach-blo Vanity Box and Cover (minor chip on base)
- 58 _____ #47 Experimental Golden Opalescent 6-3/4" Low Footed Comport, Unusual
- 59 _____ Ivory 8" Tall Deep Comport

- 60 _____ #3400/92 Amethyst 32-oz. Ball Decanter (stained) and (5) Matching 2-1/2-oz. Barrel Whiskies
- 61 _____ #389 Amber 13" 2-Piece 6-Part Relish, Gold Encrusted #711 Border and Liberty Bell Centennial Lodge in one section, Unusual
- 62 _____ SS#7 Crown Tuscan 14" Seashell Sandwich Plate, Charleton Gardenia Decoration, Gold Trim
- 63 _____ #433 Helio 8-1/2" Doric Plate, Gold Laurel Wreath (trim wear)
- 64 _____ #306 Emerald Green 3" Pansy Vase
- 65 _____ #3400/9 Gold Krystol 7" Candy Box and Cover, Etch Gloria, signed (chip to knob)
- 66 _____ W106 Milkglass 6" Seashell Comport, Charleton Enamel Roses (gold trim wear), Unusual
- 67 _____ Rubina 10-1/2" Bowl with Wide Optic, Good Color
- 68 _____ #3400/6 Crystal 11-1/2" Cheese and Cracker, Gold Encrusted Valencia Etch (minor gold trim wear)
- 69 _____ #3700 Crystal 1-oz. Cordial, Unknown Cutting with Cut Stem
- 70 _____ #3103 Carmen 1-oz. Cordial, Crystal Stem and Foot (chip to foot)
- 71 _____ #1327 Forest Green 1-oz. Cordial/Favor Vase (flaw in bowl)
- 72 _____ #3077 Mulberry 1-oz. Cordial
- 73 _____ #1402/100 Carmen Tally-Ho 1-oz. Cordial, Crystal Stem and Foot
- 74 _____ #1236 Amber 8" Ivy Ball, Crystal Keyhole Stem and Foot
- 75 _____ #3500/64 Moonlight Blue 12" 4-Toed 3-Part Celery and Relish, Unusual Color
- 76 _____ Milkglass Cambridge Rolling Pin, Original Imperial Manufacturing Wooden Handles
- 77 _____ #870 Ebony Decagon 11" Center-Handled Sandwich Tray
- 78* _____ #14 Jade 10" Bowl and Twist Candlesticks (set), (bowl scratched)**
- 79 _____ #3400/88 Amber 2-Part Bowtie Relish, signed
- 80 _____ #1 Crown Tuscan 5" Seashell Plate, Charleton Enamel Roses, Gold Trim
- 81 _____ #2660 Crystal Wheat Sheaf NearCut Child's Punch Set with 6 Cups
- 82 _____ #28-1/2 Crystal #1917 NearCut Marmalade, Etch #1 (lid differs from #1917 marmalade, but same shape)
- 83 _____ #2780 Carnival Green Inverted Strawberry NearCut 6-1/2" Bowl, signed
- 84 _____ #2631 Crystal Marjorie NearCut 13"W x 11"H Punch Bowl with Base (chip to bowl and base)
- 85 _____ #2693 Crystal NearCut 8" Tall Jug, signed (bruise to side)
- 86 _____ #2651 Crystal Inverted Feather NearCut 4-5/8" Wines (8), (2 have a chip on foot)
- 87 _____ #2699 Crystal Buzz Saw NearCut 11" Celery (small chip to 2 points)
- 88 _____ #2837 Crystal Peacock NearCut Tumbler, Rare
- 89 _____ #2960 Crystal NearCut 4-Lines Basket
- 90 _____ #2660 Crystal Wheat Sheaf NearCut 10-1/2" Cake Plate, signed (scratched)
- 91 _____ #3400/38 Heatherbloom 80-oz. Ball Jug with Optic (factory repair to rim), Rare
- 92 _____ #3400/10 Lt. Emerald 11" Center-Handled Sandwich Tray, Etch Gloria (small nick on center)
- 93 _____ Ebony Perfume, Original DeVilbiss Silver Fittings and Stopper with Ebony Insert
- 94 _____ SS#10 Crown Tuscan 5" Nude Shell Comport, Charleton Enamel Roses, Mint Gold Trim
- 95 _____ #520 Lt. Emerald Buddha Electric Lamp, Brass-Plated Base, Pleated Paper Shade, Pull Chain
- 96 _____ #1211 Willow Blue Everglade 4" Candlesticks (pair)
- 97 _____ #29 Crystal Satin Everglade 18" Buffalo Hunt Tray, Hard To Find
- 98* _____ #37 Amber Mt. Vernon 11-1/2" Plate with Tab Handles**
- 99 _____ #3400 Emerald Green Pitcher and (6) Ball Bottom Tumblers, All in Farber Holders, Cambridge labels
- 100 _____ #317 Carmen 5-oz. Georgian Tumblers (2)
- 101 _____ SS#2 Crown Tuscan 7" Seashell Salad Plate, Charleton Enamel Roses (gold trim wear)
- 102 _____ #3400/106 Forest Green Ball-Shaped Marmalade (large chip near spoon opening)
- 103 _____ Helio Bitters Bottle, Original Tube Stopper, Hard To Find
- 104 _____ SS#44 Crown Tuscan 6" Footed Seashell Flower Center (2)
- 105 _____ Mt. Vernon Original Paper Easel Display Sign
- 106 _____ #865 Amber Decagon Cups and Saucers, Etch Cleo, all signed but 1 cup (4 sets)
- 107 _____ #70 Crystal Stratford 12-1/2" Bowl with Flashing (mishaped tool mark to edge, flashing is worn)
- 108 _____ Cambridge Carrara Doorknobs, Original Nickle-Plated Fittings (2), Unusual
- 109 _____ #2355 Primrose 8" Footed Bud Vase with Ruffled Top (foot not round)
- 110* _____ #3500/139 Crystal Honey Box with Farber Chrome Top**
- 111 _____ #81 Crystal "Krystolshell" Cream and Sugar
- 112 _____ Amber 14-oz. Decanter in Farber Duchess Lace Holder (wrong stopper) & (6) #1341 Amber 1-oz. Cordials
- 113 _____ #3500/16 Crystal 11" Bowl, Unknown Cutting (badly stained, large chip on foot)
- 114 _____ #1114 Crystal 6" Bashful Charlotte Figure Flower Holder
- 115 _____ #645 Moonlight Blue Epergne, #1438 Arm, #19 Bobeche with Crystal Prisms, and (2) 7" Crystal Vases (large chip to underside of bobeche, incorrect 7" vases), Unusual
- 116 _____ #3116 Crystal 1-oz. Cordial, Cambridge label
- 117 _____ #3700 Crystal 1-oz. Cordial, Engraved King Edward

- 118 _____ #1327 Royal Blue 1-oz. Cordial/Favor Vase
- 119 _____ #3075 Lt. Emerald 1-oz. Cordial, Narrow Optic
- 120 _____ #3400/1240 Gold Krystol 12" 4-Toed Oval Bowl, Etch Apple Blossom & #3400/647 Matching
Decagon 6" 2-Lite Candelabrum (pr)
- 121 _____ #3085 Amber 9-oz. Goblet, Mint Gold Encrusted Hunt Scene, Hard To Find
- 122 _____ W107 Milkglass Seashell 6" Footed Candy Box and Cover
- 123 _____ #3400/4 Crystal 12" 4-Toed Flared Bowl, Gold Encrusted Diane Etch (wear to gold)
- 124* _____ **SS#33 Emerald Green Seashell 4" 3-Toed Ashtray, Charleton Enamel (trim wear, chip on foot)**
- 125 _____ #3011 Amber 7" Nude Flared Comport, Crystal Stem and Foot
- 126 _____ #3011/12 Crystal 3-oz. Nude Wine (no optic)
- 127 _____ #3011/9 Royal Blue 3-oz. Nude Cocktail, Crystal Stem and Foot
- 128 _____ #1236 Crown Tuscan 8" Keyhole Ivy Ball (small chip inside top)
- 129 _____ 4-Piece Game Set, 10-oz. Footed Tumblers; Heart & Diamond with Carmen Foot, Club & Spade
with Ebony Foot (nick on rim of Diamond)
- 130 _____ #851 Amber Decagon Ice Bucket, Chrome Handle, signed
- 131 _____ #1602 Crystal 9" Crucifix Candlesticks (pair), Rare
- 132 _____ #487 Lt. Emerald 5-1/4" Oval Cheese Comport, Etch #715 Willow Scene, Unusual
- 133* _____ **#3500/69 Amber 6-1/2" 3-Part Relish on Farber Chrome Base**
- 134 _____ Caprice Varitone Ashtray Set — #214 Mandarin Gold, #215 Crystal, #216 Tahoe Blue
(large ashtray has minor chips and 2 repairs)
- 135 _____ #3 Crystal Caprice 3-1/2-oz. Cocktails (8)
- 136 _____ #173 Crystal Caprice 6" Cloverleaf Bowl (1 small nick)
- 137 _____ #70 Crystal Caprice 7" Candlesticks with Prism (pair)
- 138 _____ #14 Crystal Caprice 9-oz. Flat Tumblers (4), Hard To Find
- 139 _____ #154 Crystal Caprice 6" 2-Handled Square Bonbon (2)
- 140 _____ #51 Crystal Caprice 9-1/2" 4-Footed Deep Taper Bowl, Unusual Silver Overlay, Red and Green
Morning Glory Enamel Decoration, Rare
- 141 _____ #1 Crystal Caprice 10-oz. Goblets (8)
- 142 _____ #340 Crystal Caprice 9" Ball Vase, Ruffled Top, Hard To Find
- 143 _____ Crystal Caprice Cheese Stand, Rare
- 144 _____ #183 Crystal Alpine Caprice 80-oz. Ball Jug (handle crack) and (4) #184 Matching 12-oz. Ball-Top
Tumblers (large chip to rim of 1)
- 145 _____ #241 Amber Caprice 4-1/4" Vase
- 146 _____ #310 LaRosa Caprice 10-oz. Blown Table Tumbler, 3-7/8" Tall, Rare
- 147 _____ #62 Amethyst Caprice 12-1/2" 4-Footed Belled Bowl (repaired chip on 1 foot, shows wear), Rare
- 148 _____ #165 Moonlight Blue Caprice 3-Footed Candy Box and Cover
- 149 _____ #112 Moonlight Blue Caprice Twin Salad Dressing Bowl with Center Handle and 2 Ladles
- 150 _____ #1338 Moonlight Blue Alpine Caprice 6" 3-Lite Candlesticks (pair), (chip to candlecup and broken
bubble to base of 1 candlestick)
- 151 _____ #6004 Crown Tuscan 10" Footed Vase, Gold Encrusted Rosepoint Etch (not original Sterling Silver Foot)
- 152 _____ #1084 Willow Blue Decagon 13" Service Tray, Etch Cleo, signed (scratched), Rare
- 153* _____ **#3500/61 Crystal 6-1/2" 3-Part Relish with Forest Green Handle (crack in handle)**
- 154 _____ #319 Gold Krystol 9-oz. Georgian Tumbler (original turncard describing manufacture)
- 155 _____ W54 Milkglass 32-oz. Jug, Hard To Find
- 156 _____ SS#21 Crown Tuscan 6" Footed Seashell Candy Box and Cover, Charleton Enamel Roses
Decoration (gold trim wear, chip on finial)
- 157 _____ #3130 Crystal Bell, Etch Portia
- 158 _____ Crystal Covered Powder Box, signed DeVilbiss in Mold, Rare
- 159 _____ #3400/96 Gold Krystol Optic 2-oz. Oil, Crystal Keyhole Stopper, Etch Apple Blossom
- 160 _____ #518 Lt. Emerald 8-1/2" Draped Lady Figure Flower Holder (rough mold seams)
- 161 _____ #575 Crown Tuscan 9" Cornucopia Vase, Gold Encrusted Rosepoint Etch (pair), (gold trim badly worn)
- 162 _____ #68 Azurite 10" Candlesticks, #619 Gold Band Overlay (pair), (gold trim wear)
- 163 _____ Small Crystal Frog Figure (large chips to base)
- 164 _____ Jade Pousse Café, Rare
- 165 _____ #3500/109 Crystal 11" 4-Toed Oval Bowl, Ram's Head Handles
- 166 _____ #1042 Crystal 6-1/2" Swan, Style I, signed (large chip to 1 fin)
- 167 _____ #518 Crown Tuscan 8-1/2" Draped Lady Figure Flower Holder (mfg. crack in bottom), Rare
- 168 _____ #500/122 Lt. Emerald Block-Optic 56-oz. Pitcher and Lid (crack in handle)
- 169 _____ #3400/67 Crystal 12" 5-Part Celery and Relish, Gold Encrusted Diane Etch (minor gold trim wear)

- 170 _____ #1613/1615 Crystal Mt. Vernon 18" Hurricane Lamp with Gold Trim and Gold Encrusted
Wildflower Etch Shade (chip to rim)
- 171 _____ #3105 Royal Blue Pressed Rosepoint 12-oz. Ice Tea
- 172 _____ #3450 Amber Nautilus 40-oz. Decanter (stained)
- 173 _____ SS#18 Crown Tuscan 10" 3-Toed Seashell Bowl
- 174* _____ **#1402/139 Crystal 10-1/2" Tally-Ho Top Hat (slight lavender tinge)**
- 175 _____ Crystal Cambridge Arms Set—(2) #1596 6-1/2" Bases, (2) #1563 4-Candle Arms, (2) #1536 Peg Nappies
- 176 _____ #868 Amber 11" Decagon Cracker Tray, Etch Cleo, Gold Trim and #873 Matching Mayonnaise
Liner, both signed (gold trim wear)
- 177 _____ #3900/575 Mandarin Gold 10" Cornucopia Vase
- 178 _____ #7966 Crystal 9-oz. Goblet, Silk Screen Lily-of-the-Valley (just the etching, no gold applied), Unusual
- 179 _____ #658/2 Crystal Ram's Head with Cornucopia Center, 2-Lite Candelabra with Bobeches and Prisms,
all Etched Elaine (pair)
- 180 _____ #1 Amber Keg Barrel and Ebony Log Base Only
- 181 _____ Royal Blue "Top Hat" Ashtray
- 182 _____ #3900/136 Emerald Green 5-1/2" Comport, Charleton Enamel Decoration
- 183 _____ #3500/67 Crystal 10" 5-Piece Relish Set in Sheffield Silver Co. Tray, Cambridge labels, Unusual
- 184 _____ #1130 Ebony Nautilus 12" Footed Vase, Sterling Silver Decorated (décor is worn)
- 185 _____ #92 Crystal Mt. Vernon Ice Bucket with Chrome Handle and Tongs
- 186 _____ #1238 Royal Blue 12" Vase, Crystal Keyhole Stem and Foot (mfg. flaws near bottom of vase)
- 187 _____ #3400/160 Crystal 12" 4-Toed Oblong Fancy Edge Bowl, Etch Chantilly
- 188 _____ #518 Amber 8-1/2" Draped Lady Figure Flower Holder
- 189* _____ **P.671 Crystal Pristine Ice Tub, Engraved #952 Chesterfield (flea bite to rim)**
- 190 _____ #138 Crystal Round Cream and Sugar, Etch #715 Willow Scene, Blue Enamel Encrusted, Gold
Trim shows wear, Unusual
- 191 _____ #3400/9 Willow Blue 7" Candy Box and Cover, Etch Gloria, signed, Hard To Find
- 192 _____ #518 Peach-blo 8-1/2" Draped Lady Figure Flower Holder
- 193 _____ #1066 Royal Blue 2-oz. Sherry, Rare
- 194 _____ SS#16 Crown Tuscan 7" Footed Seashell Flared Comport, Charleton Harbor Scene Decoration
(slight gold trim wear)
- 195 _____ #7606 Crystal 10-oz. Tall Tumblers, Etch Marjorie (10), Unusual Size
- 196 _____ #3500/64 Crystal 12" 4-Toed 3-Part Celery and Relish
- 197 _____ #3011/40 Crown Tuscan 10" Flying Lady Bowl (large chip to 1 scallop)
- 198 _____ #3400/40 Crystal Footed Sugar Shaker, Etch Apple Blossom, Metal Top, Rare
- 199 _____ #274 Crystal 10" Footed Bud Vase, Etch Diane
- 200 _____ #14 Crystal Everglade 14" Tulips Bowl
- 201 _____ #865 Willow Blue Decagon Cups and Saucers, Etch Cleo, signed (2 sets)
- 202 _____ #3796 Crystal "Circle" 1-oz. Cordial
- 203 _____ #2500 Crystal Chesterfield 1-oz. Pressed Cordial
- 204 _____ #3112 Royal Blue 1-oz. Cordial, Crystal Stem and Royal Blue Foot, Hard To Find
- 205 _____ SS#11 Crown Tuscan 7" Nude Shell Comport, Charleton Enamel Roses, Mint Gold Trim
- 206 _____ #1070 Lt. Emerald 36-oz. Pinch Decanter, Etch Cleo (stained)
- 207 _____ #3125 Gold Krystal Tall Sherbet, Etch Deauville, Crystal Stem and Foot
- 208 _____ #3125 Gold Krystal Goblet, Etch Deauville, Crystal Stem and Foot
- 209 _____ #512 Peach-blo 9-1/2" Rose Lady Figure Flower Holder on Early Scalloped Base (minor base chip)
- 210 _____ #274 Ebony 10" Footed Bud Vase, White Gold Encrusted Apple Blossom Etch
- 211 _____ Small Crystal Squirrel Figure (small chip to base)
- 212 _____ #1040 Crown Tuscan 3" Swan, Style III
- 213 _____ #1066 Amber 12-oz. Goblets with Optic (3), (small nick to foot of 1)
- 214 _____ #1307 Peach-blo 5-1/4" 3-Lite Candlesticks, Etch #760 Rose Chintz (pair), Unusual
- 215 _____ 22-Piece Set: #3400 Gold Krystal with Grey Floral Cutting; (1) 9" Plate, (7) 7" Plates (light use),
(5) Cups & Saucers, and (4) #3130 Tall Sherbets (1 rim chip), all signed but sherbets
- 216* _____ **#972 Lt. Emerald 11" 2-Handled Cake Plate, Etch Cleo, Gold Trim, signed**
- 217 _____ Farber Chrome Cocktails with Royal Blue Inserts (6)
- 218 _____ Similar to #1355 Crystal 2-Lite Candelabra, Unusual Leafy Spray Center (large chip to 1 socket, no
bobeches), Unusual
- 219 _____ #3011/7 Carmen 4-1/2-oz. Nude Claret, Crystal Stem and Foot
- 220 _____ #3011/9 Moonlight Blue 3-oz. Nude Cocktail, Crystal Stem and Foot
- 221 _____ #3011 Royal Blue 7" Nude Flared Comport, Crystal Stem and Foot
- 222 _____ #1371 Amber Bridge Hound, Cambridge label

223 _____ #3797 Crystal Cambridge Square 9-1/2" Bowl, Etch Vanadium Corp. of America 1953 (chip inside base)
 224 _____ #845 Peach-blo Keg Ice Bucket with Chrome Handle, signed
 225 _____ Crystal 9-1/2" Candlestick, All-Over Green Décor, Beautiful Flowers on Base
 226 _____ A56 Crystal 2-1/2-oz. Wine, Cut Roses, Cambridge and partial sample labels
 227 _____ #1400 Carmen Martha Washington 3-1/2-oz. Cocktail
 228 _____ #1040 Peach-blo 3" Swan, Style II, signed
 229 _____ #1136 Crystal 9" Heron Flower Holder
 230 _____ #49 Moonlight Blue Everglade 11" 3-Footed Bowl
 231 _____ #10 Moonlight Blue Everglade 4" 2-Lite Candelabrum (pair), (1 has chip and burst bubble)
 232 _____ #29 Primrose 12" Bowl, #610 Gold Band Laurel Wreath Overlay (gold trim wear)
 233 _____ #611 Forest Green Silent Butler in Farber Chrome Holder (chrome is pitted)
 234 _____ #3400/67 Gold Krystal 12" 5-Part Relish, Etch Apple Blossom in Gold Filigree Handled Tray, Unusual
 235 _____ #235 Carrara Community Pomade Box and Cover
 236 _____ #1040 Carmen 3" Swan, Style III (bottom is pitted)
 237 _____ #773 Lt. Emerald 12" Swirl-Optic Vase
 238 _____ #1066 Crystal Oval Cigarette Holder with Ashtray Foot
 239 _____ #73 Crystal Arcadia 6" 2-Lite Candlestick
 240 _____ Amethyst 14-oz. Decanter in Farber Duchess Lace Holder and (4) #7966 Amethyst 1-oz. Cordials
 241 _____ #1917/87 Azurite Plainware 1-Pound Covered Candy, #610 Gold Band Overlay (gold trim wear)
 242 _____ Crystal Ruffled Cigarette Holder, Etch Chantilly, Sterling Silver Base (damage to silver)
 243 _____ #3900/67 Crystal Corinth 4-1/2" Candlesticks (pair)
 244 _____ #6004 Crown Tuscan 10" Footed Vase, Gold Encrusted Rosepoint Etch
 245 _____ #85/2366 Jade 10-1/2" Cylinder Vase, #610 Gold Band Laurel Wreath Overlay (gold trim wear)
 246 _____ SS#30 Crown Tuscan 9" 4-Toed 3-Part Seashell Relish, Charleton Enamel Roses (gold trim wear)
 247 _____ #11 Heatherbloom Mt. Vernon 7-1/2" Footed Comport
 248 _____ #693/3000 Crystal Satin 2-Piece Canape Set with Horse, Rider, and Dog in Red Enamel, Hard To Find
 249 _____ P.569 Carmen Pristine 9" Crimped Vase or Bowl
 250 _____ #432 Ebony 8-1/2" Footed Bowl with Ram's Head Handles (nicks on base, scratched) and #65
 Ebony 9-1/2" Doric Column Candlesticks (pair), (bases unfinished, crack in top of 1)
 251 _____ W120 Milkglass 8" Dresden Lady Figure
 252 _____ #1402/92 Crystal Tally-Ho 10" 2-Handled 4-Compartment Relish, Gold Encrusted Minerva Etch
 253 _____ #2 Lt. Emerald Beverage Set with Ebony Tray, Smith 1927 cat., pg. 20 (stopper badly damaged)
 254 _____ #3400/38 Royal Blue 80-oz. Ball Jug with Crystal Handle
 255 _____ #3011/7 Frosted 4-1/2-oz. Nude Claret, Rockwell Sterling Silver Duck Overlay, Rare
 256 _____ #3797 Crystal Cambridge Square Wines (4)
 257 _____ #556 Crystal 8" Plate, Etch #715 Willow Scene, Blue Enamel Encrusted with Gold Bands
 258 _____ Jade Rolled-Rim Comport, 10"W x 7"H
 259 _____ #3400/98 Carmen Ball-Shaped Cream and Sugar in Farber Holders, Cambridge labels
 260 _____ #3797/67 Ebon Cambridge Square 3-1/2" Cupped Candlesticks (pair), Cambridge label
 261 _____ #1 Mulberry 4-1/2" Twist Muddler
 262 _____ #7 Avocado Martha Washington 11" Flip Bowl, Rare
 263 _____ #1613 Crystal Mt. Vernon 9-1/2" Hurricane Bases w/ Bobeches & Prisms, non-Cambridge Shades (pr)
 264 _____ #6004 Crown Tuscan 10" Footed Vase (bruise to rim)
 265 _____ #3400/100 Peach-blo 13-oz. Tumblers, Etch Gloria (4)
 266 _____ #1076 Amber Decagon Cream Soups and Saucers, Etch Cleo, all signed (4 sets), (1 without saucer)
 267 _____ #3500/68 Crystal 5-1/2" 2-Compartment Relish, Etch Chantilly, Sterling Silver Base
 268 _____ #1321 Amber 28-oz. Footed Decanter and (6) #7966 Amber 2-oz. Sherries (large chip on 1 foot)
 269 _____ #1402/100 Carmen Tally-Ho Claret, D/1007 Gold Silk Screen, Crystal Stem/Foot (minor trim wear on foot)
 270 _____ #789 Amber 6-1/2" Footed Vase, #732 Etch, Gold Trim (etching slip on edge)
 271 _____ #680 Bluebell Vanity Box and Cover (repair under lid)
 272 _____ Primrose Atomizer, Gold & Black Enamel Trim, Mint Original Gold Fittings, partial DeVilbiss label, Rare
 273 _____ #300 Crystal 6" Candy Box with Carmen Rose Finial on Cover, signed (scratched)
 274 _____ #3400/113 Ebony 35-oz. Decanter and (4) Ebony 2-1/2-oz. Barrel Tumblers, All in Farber Holders
 275 _____ #851 Lt. Emerald Decagon Ice Bucket, Chrome Handle, signed (large straw mark to bottom)
 276 _____ #3400/38 Crystal 80-oz. Ball Jug, Sterling Silver Overlay of Grape Decoration
 277 _____ SS#21 Windsor Blue Seashell 6" Footed Candy Box and Cover, signed (flaw to finial)
 278 _____ #3400/67 Gold Krystal 12" 5-Part Relish, Etch Apple Blossom (bottom is scratched)
 279 _____ Ivory Wetherford 8" Bowl with Petal Edge
 280 _____ #555 Crystal 8" Plate with Sterling Silver Rim, Etch Elaine
 281 _____ #1042 Emerald Green 6-1/2" Swan, Style III

- 282 _____ #758/759/445 Amber Decagon 3-Piece Mayonnaise Set, Grey Floral Cut, signed (mayo scratched)
- 283 _____ Mulberry 9-1/2" 14-Panel Bowl, signed and Mulberry 7" Twist Candlesticks (pair)
- 284 _____ SS#18 Tahoe Blue 10" 3-Toed Seashell Bowl (scratched), Rare
- 285 _____ #94 Primrose Sweet Pea Vase, 8-1/4"W x 7"H
- 286 _____ #968 Crystal Cocktail Icers with Inserts, Etch Wildflower (4 sets)
- 287 _____ #3 Frosted Bird (has nicks)
- 288 _____ #2 Amber Rooster Muddler, Rare
- 289 _____ #6004 Crown Tuscan 6" Footed Vase, Gold Encrusted Portia Etch
- 290 _____ #1400 Amber Martha Washington 1-oz. Cordial
- 291 _____ #1327 Carmen 1-oz. Cordial/Favor Vase
- 292 _____ #3500 Crystal 1-oz. Cordials, Mint Gold Encrusted Elaine Etch (2)
- 293 _____ #1307 Crystal 5-1/4" 3-Lite Candlestick, Etch #756 (mfg. flaw to 1 candlecup)
- 294 _____ #782 Amber 8-1/2" Vase, Etch #717
- 295 _____ #514 Peach-blo 5-1/2" Eagle Flower Holder (minor chip to base), Rare
- 296 _____ #1236 Carmen 8" Ivy Ball, Crystal Keyhole Stem and Foot (repair to top)
- 297 _____ #3400/4 Crystal 12" 4-Toed Flared Bowl, Gold Silk Screen Apple Blossom (gold trim wear)
- 298 _____ #1095 Willow Blue Decagon 3-Piece Cream, Sugar, and Holder, sugar signed
- 299 _____ #2970 Gothic Combination Autosaucer, Ice Cream, and Wafer Tray
- 300 _____ #3400/647 Crystal 6" 2-Lite Keyhole Candlesticks, Etch Apple Blossom (pair)
- 301 _____ #627 Peach-blo 4" Candlestick, Etch Cleo
- 302 _____ #3900/166 Crystal 14" Torte Plate, Etch Diane (lightly scratched)
- 303 _____ #1043 Crown Tuscan 8-1/2" Swan, Style III (very rough mold seams)
- 304 _____ #3400/4 Crystal 12" 4-Toed Bowl, Etch Rosepoint (shows four stages of gold encrusting process),
Extremely Rare
- 305 _____ #3143/38 Mocha 80-oz. Gyro-Optic Ball Jug, Crystal Handle & (6) #3143/50 Matching 13-oz. Tumblers
- 306 _____ #147 Crystal 8-oz. Marmalade, Etch Diane, Sterling Silver Base, Cover, and Ladle (etching slip to rim)
- 307 _____ #2780 Carnival Amethyst Inverted Strawberry NearCut 4" Nappy, signed (strong mold lines inside)
- 308 _____ Duchess NearCut Night Light (kerosene lamp) with Wick, Chimney, and Fittings
- 309 _____ #2635 Crystal Fernland NearCut 9" Bowl, Round A-Shape
- 310 _____ #2651 Crystal Feather NearCut Banana Stand, signed, Unusual
- 311 _____ #2653 Crystal Ribbon NearCut Cracker Jar and Cover, signed (small chip on jar and lid)
- 312 _____ #2695 Crystal NearCut 1/2-Gallon Tankard, signed (base chips)
- 313 _____ #2699 Crystal Buzz Saw NearCut Basket with Rope Handle, signed (chip to foot)
- 314 _____ #2760 Crystal Daisy NearCut 10" 4-Footed Bowl, signed (chips to feet)
- 315 _____ #2693 Crystal NearCut 9" Nappy, A-Shape, signed
- 316 _____ #855 Ebony Decagon 11" Flip Bowl, signed and #627 Matching 4" Candlesticks (pair)
- 317 _____ #165 Emerald Green Cascade 3-Footed Candy Box and Cover
- 318 _____ #3400/1240 Crown Tuscan 12" 4-Toed Oval Bowl, Gold Encrusted Chintz Etch, Crown Tuscan
signature (gold badly worn)
- 319 _____ #3011/2 Carmen Nude Table Goblet, Crystal Stem and Foot
- 320 _____ #3011/9 Tahoe Blue 3-oz. Nude Cocktail, Crystal Stem and Foot, Hard To Find
- 321 _____ #3011/5 Amethyst Nude 6-oz. Hoch, Crystal Stem and Foot
- 322 _____ SS#66 Crown Tuscan 4" Dolphin Footed Seashell Candlesticks (pair)
- 323 _____ #15 Ebony 9" Shallow Bowl, #619 Gold Band Overlay (gold trim wear)
- 324 _____ #6 Primrose 6" Plainware Bowl, Black Enamel Trim, signed
- 325 _____ #300 Lt. Emerald 7" Candy Box with Moonstone Interior, Etch #725, Gold Trim, signed
- 326 _____ #3500 Crystal 7-oz. Tall Sherbets, Mint Gold Encrusted Elaine Etch (5), (rim chip on 1)
- 327 _____ #1456 Crystal 7-1/2" 3-Lite Candelabra, Large Pressed Arm, 5 Bobeches with Prisms
- 328 _____ #1305 Crown Tuscan 10-1/2" Keyhole Urn Vase
- 329 _____ #86 Royal Blue 8" Footed Cylinder Vase, Sterling Silver Overlay, Rare
- 330 _____ #3500/94 Crystal 2-Lite Ram's Head Candlesticks with Ram's Head Center (pair)
- 331 _____ #1630 Rubina 12-oz. Tumblers (2)
- 332 _____ #993 Crystal 12" 4-Footed Bowl, Engraved similar to Minuet, Cambridge label
- 333 _____ #85/2366 Azurite 10-1/2" Cylinder Vase, #619 Gold Band Overlay, Gold Trim
- 334 _____ #47 Crown Tuscan Seashell 9-1/2" Cornucopia Vases (2), Cambridge label (burst bubble to 1 base)
- 335 _____ P.499 Emerald Green Pristine 6-1/2" Calla Lily Candlesticks (pair)
- 336 _____ #3143/39 Moonlight Blue 86-oz. Gyro-Optic Ice-Lipped Pitcher (scratched) & (6) #3143/50
Matching 13-oz. Tumblers (rim chip with repair to 1)
- 337 _____ #811 Amber 9-1/2" Decagon Dinner Plates, Etch Cleo, all signed (4)
- 338 _____ #3400/90 Crystal 6" 2-Part 2-Handled Relish, Gold Encrusted Wildflower Etch (slight gold trim wear)

- 339 _____ #3400/150 Royal Blue 12-oz. Mug, Crystal Handle
- 340 _____ #1540 Crystal 28-oz. Square Decanters (2), (no-show chips to both stoppers)
- 341 _____ #3075 Peach-blo Low Sherbets, Etch Hunt Scene, Lt. Emerald Foot (2), (rim repairs to both)
- 342 _____ #1563 Crystal Cambridge Arms, 4-Candle Arm (2)
- 343 _____ #1636 Crystal 4" Peg Blue Jay for Cambridge Arms
- 344 _____ #3400/14 Gold Krystol 7" Tall Comport, Etch Apple Blossom
- 345 _____ #3450 Crown Tuscan Nautilus 4" Sugar
- 346 _____ #45 Amber 10" Footed Comport with Rolled Edge, Etch #715 Willow Scene
- 347 _____ P.430 Crystal 12" Belled Bowl, Etch Chantilly, Sterling Silver Base
- 348 _____ Blue I #1917/88 1/2-Pound Covered Candy Jar with Optic, Grey Floral Cutting, signed
- 349 _____ #3400/74 Crystal 5" 4-Toed Master Nut Dish, Mint Gold Encrusted Diane Etch, signed
- 350 _____ #1119 Crystal Eagle Bookends (pair)
- 351 _____ Ebony Plainware Basket, 3"W x 5-1/2"H
- 352 _____ #3400/10 Crystal 11" Center-Handled Sandwich Tray, Etch Wildflower
- 353 _____ #1005 Crystal 6-1/2" Vase with Ebony Foot, Etch #732
- 354 _____ #42 Crown Tuscan 12" Covered Urn
- 355 _____ #513 Dark Amber Frosted 13" Draped Lady Figure Flower Holder
- 356 _____ #1043 Carmen 8-1/2" Swan, Style III
- 357 _____ #1402/37 Royal Blue Tally-Ho 2-1/2-oz. Handled Tumblers (8)
- 358 _____ #109 Lt. Emerald Mt. Vernon 9-1/2" Dolphin Candlesticks (pair)
- 359 _____ #676 Bluebell 11-1/2" Flip Bowl, Etch #704
- 360 _____ Crown Tuscan Dolphin 5" 2-Lite Candlesticks (1 lite on nose, 1 lite on tail), (pair)
- 361 _____ Crystal 6-1/2" Round Comport, Etch Chantilly, Sterling Silver Base
- 362 _____ #3400/6 Forest Green 5-1/2" Cheese Comports, Etch Diane (2)
- 363 _____ #45 Helio 9-1/2" Footed Comport, #610 White Gold Band Overlay (trim wear)
- 364 _____ #1322 Royal Blue 26-oz. Decanter with #1 Crystal Jigger Stopper
- 365 _____ #207 Crystal Caprice Cigarette Box & Cover and (4) #213 2-1/2" Shells, Original Cambridge Box (set)
- 366 _____ #4 Crystal Caprice 5-oz. Low Sherbets (6)
- 367 _____ #1569 Crystal Caprice 5-Lite Candelabrum #1357 with #1573 Arm, #19 Bobeche, #1 3" Prisms (large chip to leaf point)
- 368 _____ #11 Crystal Caprice 5-oz. Footed Tumblers (4)
- 369 _____ #1338 Crystal Caprice 6" 3-Lite Candlesticks (pair) and #53 10-1/2" 4-Footed Crimped Bowl
- 370 _____ W124 Milkglass Caprice 4-1/2" Vase
- 371 _____ #300 Mocha Caprice Blown Fingerbowl and Underplate, Rare
- 372 _____ #32 Moonlight Blue Caprice 11" 4-Footed Cabaret Plate (scratched)
- 373 _____ Moonlight Blue Caprice Cheese Stand, Rare
- 374 _____ #173 Moonlight Blue Caprice 6" Cloverleaf Bowl
- 375 _____ #136 Moonlight Blue Caprice 6" Tall Footed Comport, Sterling Berries & Grapes Overlay, Hard To Find
- 376 _____ #340 Moonlight Blue Alpine Caprice 9" Ball Vase, Ruffled Top, Rare
- 377 _____ #61 Moonlight Blue Alpine Caprice 12-1/2" 3-Footed Crimped Bowl
- 378 _____ #3400/45 Crystal 11" 4-Toed Bowl, Gold Encrusted Rosepoint Etch (gold worn inside bottom)
- 379 _____ #3400/10 Crystal 11" Center-Handled Sandwich Tray, Etch Rosepoint, Gold Trim Wear
- 380 _____ #1617 Crystal Hurricane Lamp, Etch Rosepoint (shade has rim repair)
- 381 _____ #3900/19 Crystal Footed Mayonnaise, Etch Rosepoint (no ladle)
- 382 _____ #1349 Crystal 11" 4-Toed Crimped Bowl, Etch Rosepoint (lightly scratched)
- 383 _____ #3400/647 Crystal 6" 2-Lite Candelabrum, Etch Rosepoint (pair)
- 384 _____ #3900/26 Crystal 11" 3-Footed Plate, Etch Rosepoint (light use)
- 385 _____ #3900/131 Crystal 8" 2-Handled Footed Bonbon Plate, Etch Rosepoint
- 386 _____ #3400/4 Crystal 12" 4-Toed Flared Bowl, Etch Rosepoint
- 387 _____ #3400/91 Crystal 8" 3-Part Relish, Gold Encrusted Rosepoint Etch
- 388 _____ #3900/167 Crystal 14" Torte Plate, Etch Rosepoint
- 389 _____ #3500/64 Crystal 12" 4-Toed 3-Part Celery and Relish, Etch Rosepoint
- 390 _____ #3900/74 Crystal 3-Lite Candelabrum, Etch Rosepoint (pair)



EBay Report

Nudes:

- A pair of Crown Tuscan Candlesticks, decorated with gold, sold on 11/18 for \$422.
- A Forest Green Cocktail with frosted stem did not sell (reserve not met). The high bid was only \$75.
- A Carmen Cocktail with frosted stem, however, did sell on 11/30. The price was \$228.
- A Crystal Flared Comport, etched Diane, sold on 12/8 for \$762.
- An amber single candlestick sold on 12/9 for \$201.
- A Royal Blue true Cordial sold on 12/15 for \$432.

Flower Frogs:

- A 13" Draped Lady in frosted Light Emerald did not sell (reserve not met). the high bid was \$255.
- A Rose du Barry (frosted pink) Two Kid sold on 11/30 for \$258.
- A Peachblo Mandolin Lady sold on 12/15 for \$536.
- A frosted Light Emerald Rose lady sold on 12/15 for \$360.

Caprice:

- A 7.5" ruffled Top Vase in Moonlight did not sell (reserve not met). the high bid was \$178.



- A pair of La Rosa #70 candlesticks sold on 12/4 for \$113.
- A hard-to-find Moonlight 32 oz. Ball Pitcher did not sell (reserve not met). The high bid was \$207.
- A pretty pair of #1338 tri-level candlesticks in Moonlight Alpine sold on 12/12 for \$205.

Rosepoint:

- A gorgeous 17" platter with Wallace Sterling edge did not sell (reserve not met). The high bid was \$760.
- A gold-encrusted 3400 tall vase sold on 11/23 for \$310.
- A rarely seen #135 Oil Bottle sold on 11/30 for \$477.



- A Crystal Pressed Rosepoint Goblet, with the bowl etched Rosepoint, sold on 12/1 for \$416.

Nautilus:

- A #1130 Dianthus Pink Nautilus Vase, etched Rosalie, sold on 12/11 for \$885.

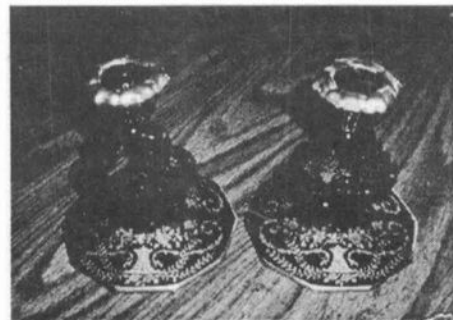


Miscellaneous:

- A 3400 80 oz Ball Jug in Crown Tuscan (undecorated) sold on 11/19 for \$535.
- A Royal Blue 3104 wine sold on 12/14 for \$149.
- A rare keyhole ivy ball in Heatherbloom sold on 12/5 for \$527.
- A tall Decanter in Light Emerald, with Hunt Scene etch sold on 11/30 for \$381.



- A pair of Carmen single-light keyhole candlesticks with gold-encrusted Portia sold on 12/16 for \$700.



- A Willow Blue #1005 Vase, etched Cleo did not sell (reserve not met). The high bid was \$324.
- A fabulous Azurite Console Set with a gold decoration sold on 12/2 for \$765.



Study Groups:

The NCC has several study groups; these are the groups currently active and holding regular meetings. Listed below is contact information for these study groups.

If there is no study group in your area and you are interested in starting or joining a new study group, please contact the Crystal Ball or call NCC Study Group Advisor Ken Filippini at (201) 670-0990.

- #13 - **Miami Valley Study Club**
Miami Valley area, Ohio
Larry Everett
db0098@dragonbbs.com
(937) 675-6491

- #14 - **The Cambridge Cordials**
Cambridge, Ohio
Lorraine Weinman
blweinman@hotmail.com
(330) 966-9376

- #15 - **North Texas Cambridge Study Group**
Dallas area, Texas
Scott Pierce
scottpierce1@msn.com
(817) 427-9510

- #16 - **Elegant Glass Collectors**
PA & NJ
Bill Dufft
billnvon@aol.com

- #17 - **The Columbus Wildflowers**
Columbus, Ohio
Barbara Wyrick
bwyr@ee.net
(614) 291-0361

- #18 - **The Cambridge Triangles**
VA, MD, DC
Alex Citron
NCCcrystalball@aol.com
(434) 296-2531

- #19 - **NE Ohio Cambridge Collectors**
Akron-Canton area, OH
Hilda Pfouts
pfoutshi@aol.com

- #20 - **South Florida Study Group**
Miami, FL
Linda Gilbert
rosepointbabe@aol.com

Study Group #17

The Columbus Wildflowers

On Thursday, December 4th, 2003, the Wildflowers met at the home of Rose MacConkey at 6:00 pm for our annual Christmas Potluck & Gift Exchange. Our first order of business was to enjoy a wonderful dinner of honey baked ham with all the side dishes including potatoes, sweet potatoes, carrots, green bean casserole, spinach soufflé and broccoli with rice, and then a variety of delicious desserts – Blackberry pie, Texas sheet cake, and Turtle cake with ice cream

In place of a formal meeting, our hostess, Rose MacConkey, read two humorous pages entitled "Real Church Bloopers" and "Why Santa Must Be a Woman." Then we had three fun and rowdy Christmas Contests. Ralph Warne won a pair of Christmas ornament candlesticks for the Holiday Word Scramble (with some Cambridge glass words thrown in), Linda Roberts won Christmas placemats for the "Little Known Christmas Facts," and Linda Speakman won a Christmas Tree soap dispenser for "What's in the Bag?"

Next came our rousing "Robber Gift Exchange" where we could choose a gift off the table or steal someone else's. After the dust settled, we all had wonderful gifts including: a Crystal Doulton Jug; tall Light Emerald Comport with very unusual etching; King Edward cut Cream and Sugar with Sterling feet; #3400 three part Relish etched Wildflower; #3900 footed Torte Plate etched Rosepoint; an eight inch, four-footed Shell Candy dish in Milkglass; a #1238 Amethyst Vase with crystal Keyhole stem; and a #3400 Crystal small Ball Decanter with stopper.

Our meeting concluded with an exciting Show and Tell of items recently found by members which included: Crystal Nearcut Spade from the Bridge set; Crown Tuscan

3-part Covered Candy with Charleton Gardenia; a Gold Encrusted Rosepoint Ice Bucket; a Heisey Lariat Cigarette Box with Charleton decoration; #272 Light Emerald 10 inch vase with etched gold rim; Crystal Wildflower Wine with #3121 stem; tall Carmen flare top vase with crystal Keyhole stem; Gold Encrusted Portia tall Sherbet; Thistle Near Cut Basket; an Imperial Carmen Caprice three footed bowl (Cambridge only made it in Crystal and Moonlight Blue); a Crystal Caprice three foot Covered Candy; the large #1299 Crystal footed vase etched Wildflower; a Forest Green Asparagus Plate; Satin Decalware Pristine Dinner Plate; a Vanity Lamp with Cambridge Square Candlestick Base and Heisey Candlestick portion of the stem; Sterling Comport Base with Diane etched insert; tall Achilles cut Vase with unusual fitted flower frog insert; an Amber perfume with cutting; and an Amber Perfume with floral silver overlay.

Everyone had a great time, and our January 8th meeting will be at the home of Linda Roberts. Our meeting adjourned at 10:00 PM.

New members in the Columbus, Ohio area are always welcome and can contact either Linda Roberts at lrobert2@columbus.rr.com or Barbara Wyrick at bwyr@ee.net

—respectfully submitted by Barbara Wyrick, Secretary

Study Group #13

Miami Valley Study Club

The meeting of November 4 was called to order at 7:00 p. m. by the President, Larry Everett. In attendance were Larry and Susan Everett, Diane Gary, Ron and Norma Hufford, Mac and Georgia Otten, David Rankin, Ken and Judy Rhoads, Fred Schaefer, Frank and Vicki Wollenhaupt.

It was moved and seconded to dispense with the reading of the

minutes as they had been sent to each member. The treasurer's report lists a balance on hand of \$312.61.

OLD BUSINESS:

Diane Gary will have the Christmas party on Sunday December 7 at her house.

There will be a \$15.00 gift exchange for those wishing to participate.

NEW BUSINESS:

There was no new business.

Frank Wollenhaupt moved to adjourn the meeting. It was seconded by Ken Rhoades.

SHOW AND TELL:

3700 RCE Tempo, 1oz. Cordial
3779 etch Daddodil 1oz. Cordial
3103 REC King Edward 2oz. Sherry Harvest 6 1/2" vase
1314 Royal Blue 3" Footed Ashtray
2671 12" heavy imitation cut glass straight sided vase marked Near Cut 2800/235 Community Azurite 3 3/4" pin tray signed with large mark
2800/234 Community Primrose covered soap dish
W128 7 1/2" Daffodil Milk Glass vase
8701 Decalware 10oz. Tumbler
Topaz door knob
2351 Near Cut bell shape tumbler.

PROGRAM:

We held a "Book Look" with the 1949 to 1953 catalog, identifying unusual, confusing or puzzling items.

Respectfully submitted,

Norma Hufford

Attention...

NCC members in eastern Massachusetts or Rhode Island

interested in forming a study group, please contact The Crystal Ball, and we'll get you together with others in your area.

e-mail:

NCCCrystalball@aol.com

Letters:

Dear Crystal Ball,

Do you know if there's a complete list of the Caprice molds owned by Summit? Also, is there any way to be sure if a piece of Caprice seen on eBay is Cambridge or Summit?

- Harold Stoetzer

Mark Nye responds:

Dear Harold,

There is no easy way to document Summit production. Their catalogs and price lists are virtually impossible to obtain, if available at all. Plus, in the past, the owners were not always cooperative when being asked about production. So the answer to your basic question is no, no up-to-date list of all the Summit Caprice pieces/colors exists. However, I am reasonably sure that the list of Summit Caprice molds published in the Caprice book is accurate and that Summit has no other Caprice molds.

Based on this and on what we know about Cambridge Caprice production, the repro problem can be limited. No significant information regarding Caprice in color has come to light since the Caprice book was published. Thus by becoming familiar with what Cambridge produced in color you can easily spot all the odd colors from Summit production that appear on Ebay, in flea markets, malls, etc.

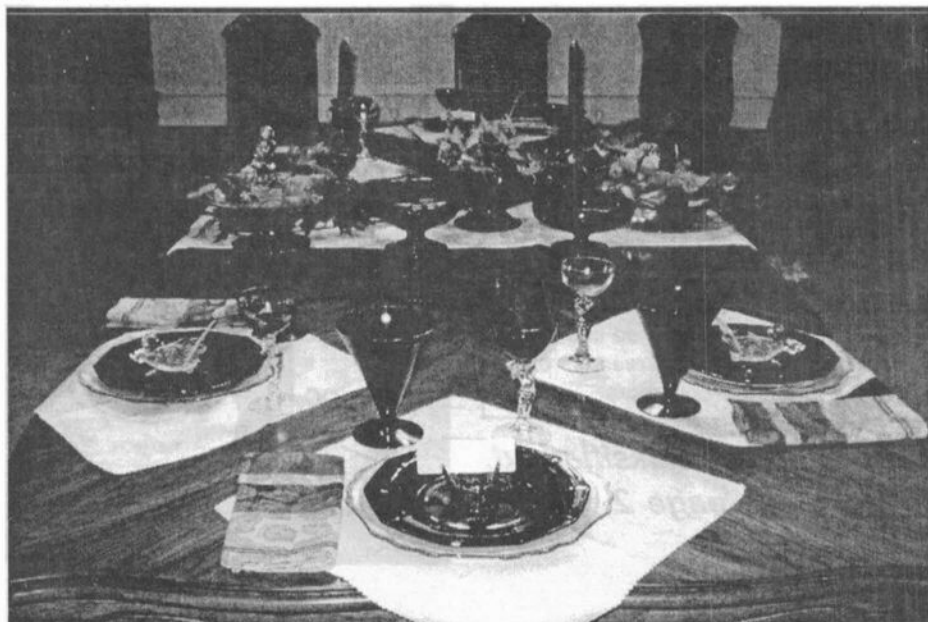
Rest assured Cambridge did not produce Caprice with the Shirley Temple decal nor did they make Jadite or slag Caprice! To the best of my knowledge, there has never been a piece of Crystal Caprice produced by Summit. Thus the only real problem in the Caprice line is Moonlight Caprice, and specifically those molds owned by Summit. Summit does not, or at least I have not known them to do so in the past, do any hand finishing or shaping. Thus the pieces they sell are just as they come from the mold. Being familiar with how the Cambridge pieces appear will enable a collector to spot the odd shapes when handling or seeing the actual piece but this is rarely helpful on eBay.

So, is there any sure way to spot Summit Moonlight Caprice on eBay? I don't think so. Of course the early pieces had the dimple but I am not sure if Summit is still using that "mark" or not or if it has worn from the molds.

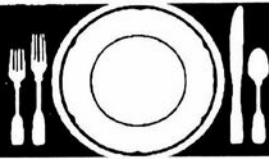
I guess that bottom line is that if Summit has the mold, I too would not buy a piece of Moonlight Caprice on eBay unless I personally knew the seller or if they have a reputation for being a knowledgeable and honest dealer.

I hope this is of help to you.

Mark



*Thanksgiving table set with beautiful Cambridge Glass.
Shared with us by John & Dorothy Alden*



Stems Without Thorns

As the world's largest supplier of old & new china, crystal, silver and collectibles, Replacements, Ltd. has more than 700 different patterns of Cambridge crystal.

And however much we enjoy selling pieces that were once thought irreplaceable, we love buying them as well. Thanks to people like you, our crystal inventory currently numbers in the hundreds of thousands, and the numbers keep growing every year.

So, if you've been unsuccessfully searching for that elusive piece of Cambridge — or any other type of fine crystal — call us for a free list of pieces available in your pattern. And, if you're looking to sell pieces you currently have, we can help you there, too.

REPLACEMENTS, LTD.
China, Crystal & Silver • Old & New

1-800-REPLACE
(1-800-737-5223)

1089 Knox Road,
PO Box 26029, Dept. CB,
Greensboro, NC 27420
www.replacements.com

Wanted:

FIND GLASS HERE... a "Wants" ad like this costs less than \$3, and reaches over 1,000 Cambridge collectors. You may locate that one elusive piece, or fill out a set!

For Sale:

- Rosepoint 3121 10 oz Tumblers (2)
- Rosepoint 3121 12 oz Tumbler (1)
- Rosepoint 3400/67 5-part Celery & Relish

\$35 each, UPS extra
Call (937) 390-3617

SELL YOUR GLASS HERE... an ad like this costs less than \$2, and reaches over 1,000 Cambridge collectors.

*To place your classified ad,
see page 2*

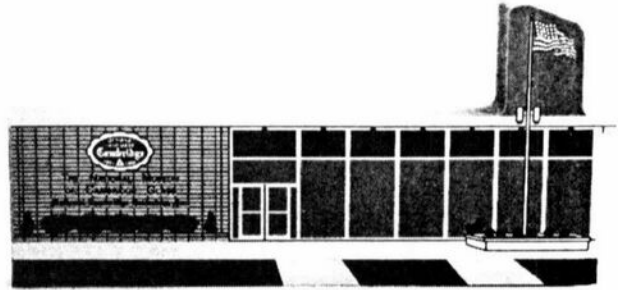
Measuring Tape

You're in a shop and you spy a swan - what size is it?
You see a stem - is this the 6" one I'm looking for?
Carry this and your life is simplified!

Official souvenir of the
Grand Opening of the
National Museum of
Cambridge Glass



\$5.00



THE CAT'S MEOW NCC MUSEUM COLLECTIBLES

for sale by the Elegant Glass Collectors Study Group

\$20 each... plus \$5 shipping

Please contact Bill Dufft at (610) 777-3869
or billnvon@aol.com



DEALER DIRECTORY

THE GLASS URN

456 West Main Street, suite G
Mesa, AZ 85201 480-833-2702
480-838-5936

Mail Order Shows Open Shop

CAMBRIDGE, FOSTORIA, HEISEY, etc.

THE DEGENHART PAPERWEIGHT AND GLASS MUSEUM, INC.

P.O. Box 186
Cambridge, OH 43725-0186

Intersection of US 22 & I-77
Phone 740-432-2626

GREEN ACRES FARM

2678 Hazelton Etna Rd.
Pataskala, OH 43062
(State Route 310 North)

Sat & Sun 1-7 pm 740-927-1882
Antiques, Crystal Glass & Collectibles

ALADDIN LAMP BOOKS

Free History of Aladdin Lamps
Figurine Lamps Wanted
Bill & Treva Courter

3935 Kelley Rd. Kevill, KY 42053
Phone 270-488-2116 FAX 270-488-2055

Madison Avenue Antiques

1851 Madison Avenue
Council Bluffs, IA 51503
Phone: (712) 388-2192



Antiques

Just east of I-80 at exit 5

Antiques & Collectibles - 100+ Dealers
Open Daily 10 am - 8 pm

DEALER DIRECTORY

When writing to these dealers, please enclose SASE

DAUGHERTY'S ANTIQUES
Jerry and Shirley
Antiques and Collectibles • Mostly Glass

www.daughertys-antiques.com
e-mail: sdaugh2515@daughertys-antiques.com

Shows & Mail Orders 2515 Cheshire North
(402) 423-7426 evenings Lincoln NE 68512

Milbra's Crystal Buy & Sell
Replacement and Matching Specifying in
Cambridge,
Fostoria, Heisy
and others.

Milbra Long (817) 645-6066
Emily Seate (817) 294-9837
PO Box 784
Cleburne TX 76033
E-mail: longseat@sbcglobal.net
www.fostoriacrystal.com

BARNESVILLE ANTIQUE MALL
open 7 days, 8 - 5
Roger, Nancy and Brian Mayhugh
Owners

202 N. Chestnut St. 740-425-2435
Barnesville, Ohio 43713 3 floors
EXIT 202 OFF I-70 • always buying & selling antiques

THE TEAM
ESTATE SALES
Liquidations • Appraisals
Consignments • Senior Services
Estate sales with some style and a bit of flair

ED TUTEN 7007 McVay Place
901-758-2659 Memphis, TN 38119
www.teamestatesale.com

THE GLASS CUPBOARD
P.O. Box 652
West End, North Carolina 27376

Marcia Ellis Cambridge Show
910-673-2884 and Mail Order

FINDER'S ANTIQUE HOUSE
3769 Highway 29 North
Danville, VA 24540

(434) 836-6782

Cambridge • Heisy • Duncan • Fostoria
Open Wed - Sat 11:00 to 5:00 (seasonal hours apply)
Monday thru Saturday 10 - 5:30 Sunday 12 - 5:30

Bogart's Antiques
BUY - SELL - APPRAISE - REFINISH
CANE & REED CHAIRS - CLOCK REPAIR

Jack & Sharon Bogart State Route 40
740-820-3514 shop 7547 East Pike
740-820-7410 home Norwich, OH 43767

BAKER FAMILY MUSEUM
805 CUMBERLAND ST.
CALDWELL, OHIO 43724

740- 732-6410
Mon & Thurs 9-4; Fri - Sat 9 - 5
Call for Sunday Hours

CRYSTALLINE COLORS
Buy, Sell and Appreciate
Cambridge and other Elegant Glass

I Love Cambridge


Lynne R. Franks 216-661-7382
Ohio Antique Malls

CRYSTAL LADY
Thurs. - Sat. 11-5
1817 Vinton St. Omaha, NE 68108
Bill, Joann and Marcie Hagerty
Shop 402-341-0643 Home 402-391-6730

Specializing in Elegant Glass & Collectibles
www.crystalladyantiques.com

Storck's Antiques
Rick & Joyce
Antiques & Collectibles • Glass & Pottery
Specializing in Fenton, Imperial & Cambridge
Shows & Mail Orders • Storck1@aol.com
Greenfield, MN 55373 • (763) 477-6415

Mother Drucker's
Fanny Drucker
Specializing in Elegant Glassware
Shows and Mail Order

 P.O. Box 50261 Phone: 949-551-5529
Irvine, CA 92619 888-MDRUCKER
Website: http://motherdruckers.com

Deborah Maggard, Antiques
Specializing in Cambridge Glass,
American Hand-Made Glass & Victorian Art Glass

Please stop and see our extensive collection of
Cambridge Glass at Riverfront Antique Mall in
New Philadelphia, Ohio (I-77, exit 81)
Booths 805 and 812
You won't be disappointed.

We buy one piece or entire collections.
Please contact me at 440-247-5632
and leave a message, or e-mail at
debmaggard@adelphia.net

P.O. Box 211
Chagrin Falls, OH 44022

JUDY'S ANTIQUES
Judy Bennett
422 S. Ninth Street (corner of Jefferson)
Cambridge, Ohio 43725

Business (740) 432-5855
Residence (740) 432-3045

CAMBRIDGE GLASS MY SPECIALTY


BRIDGES THRU TIME
Elegant Glassware & Antique Collectibles
Located at Alvin Antique Center
2500 South Loop 35 • Alvin, TX 77511

For Web Storefront and Auctions
Website: www.epicr.com/store/BridgesThruTime
E-mail: cambridge@houston.rr.com

THE JONES GROUP
Cindy Jones
Buy and Sell Cambridge Glass

650 Riverside Drive
Sleepy Hollow, NY 10591

914-631-1656 or E-mail Caprice0@aol.com

 **Mary Jane's Antiques**
Early American Pattern Glass
Depression Era Items

2653 Burgener Drive 217-422-5453
Decatur, IL 62521 mjhumes@aol.com

THE GLASS HOUSE ANTIQUE MALL
Furniture, Pottery, Glass
Antiques and Collectibles
I-70 Exit 146, East on SR 40

8825 E. Pike
Norwich OH 43767 TEL 740-872-3799

GATEWAY ANTIQUE MALL, INC.
JUST NW OF MINNEAPOLIS-ST. PAUL, MN
Next to Super 8 in Rogers, MN
(I-94/101 intersection)

85 Dealers • 7 days; 10 - 6 • 612-428-8286
ELAINE STORCK, OWNER/DIRECTOR

ISAACS ANTIQUES
(740) 826-4015

See our booths in Penny Court Mall in
Cambridge and at White Pillars Antique Mall
(Route 40, one mile west of
I-70 Norwich, OH • Exit #164)

PENNY COURT MALL
637 Wheeling Avenue
Cambridge, Ohio
100 Booths 15,000 sq ft

HOURS: Daily 10-6 Sunday Noon-5
Closed: Easter, Thanksgiving, Christmas
Call for other holiday hours 740-432-4369

MARGARET LANE ANTIQUES
2 E. Main St. New Concord, OH 43762
Lynn Welker (740) 826-7414

Cambridge Glass Matching Service
Hours: Mon-Fri 10-12 AM, 1-5 PM
or by appointment

YOUR AD COULD BE HERE
ADVERTISE YOUR SHOP OR SERVICE
JUST \$24 A YEAR
SEE INSIDE FRONT COVER FOR DETAILS

Library Project Success Story

from page 6

Azurite bowl with gold band
Rubina honeycomb comport
Ivory tall comport
Green 2-kid flower frog #509
Center-handle tray etched Minerva
gold encrusted 3400/10
Rose Point banana boat, gold encrusted
Amethyst keyhole vase #1237
Royal Blue keyhole vase #1234
Moonlight Everglade bowl #39
Large Ebon bowl with gold birds

We had a framed picture of the Cambridge factory, and one of the NCC logo. On a table nearby we had Club membership forms, which mostly disappeared, Museum brochures, local glass club show promotion cards, and our card. After the month was over, all items were depleted. Many people sought us out, some at the local glass show and others by calling us on the phone. Some just wanted to express their

enjoyment of the display. Others to ask questions or to recall their experiences with Cambridge Glass, both recent, and also childhood memories. All in all, the experience was positive as well as rewarding.

Originally, our goal was to increase awareness of NCC, and attract new members by showing off the intrinsic beauty of Cambridge Glass. While this still seems like a worthwhile goal, our perception of the value of the library display project has changed somewhat.

Brian Herbert said, "Is the subject or the observer the greater influence." In applying this to the display scenario we realize that the lesson learned by the viewer, and his increase in knowledge is the ultimate goal. Recently a club member

reminded me that one of NCC's missions is education, and what better venue than a library to accomplish this.

Many club members express interest in helping NCC. If this is true, and you are looking for a way to do something that is both rewarding and purely altruistic and not about money, here is an avenue you will want to go down. If you are interested in doing a display, please contact me and I will get you a packet that contains the pertinent information. It is really an easy and fun project, with many rewards.

You can contact me (Ken Filippini) at
(201)670-0990
or lobstrboy1@aol.com

See You at the Auction!!!

March 6, 2004



NATIONAL CAMBRIDGE COLLECTORS, INC.
P.O. BOX 416
CAMBRIDGE OH 43725-0416

Website: www.cambridgeglass.org
E-mail: NCCcrystalball@aol.com

FIRST CLASS MAIL
US POSTAGE
PAID
PERMIT No. 3
CUMBERLAND OH 43732

FIRST CLASS MAIL

*Membership Renewal Notice:
If the date above your name
is 01-04, this is your last issue,
and your NCC Membership has expired.
Please renew today.*