

Cambridge Crystal Ball



Published monthly by National Cambridge Collectors, Inc.
to encourage and report the discovery of the elegant and boundless product of the
Cambridge Glass Company of Cambridge, Ohio

Issue No. 354

October 2002

The Cambridge Glass Company Sample Room Glass

by Cindy Arent

The glassware from the Sample Room at The Cambridge Glass Company has been returned to Cambridge, Ohio, as the latest NCC Museum acquisition. Following is a brief history of the Sample Room glassware since it left the Cambridge factory.

The Cambridge Glass Company closed in 1958 and the contents liquidation began at that time. In 1960, the Imperial Glass Corporation bought all of the Cambridge assets, except the building and grounds. Items acquired included moulds, tools, and a large quantity of Cambridge production which was still in the showroom. All of these pieces were moved to the Imperial factory in Bellaire, Ohio. In late 1975, shortly after the Bellaire Glass and Artifacts Museum opened, Imperial (now owned by Lenox) offered the Bellaire Glass and Artifacts Museum their choice of the Cambridge pieces which they would incorporate into the glass display at their museum. They chose several hundred pieces and moved them to their museum. The Bellaire Glass and Artifacts Museum closed in 1995. Since that time the glassware has been in storage.

At the 2002 Imperial Glass Collectors Society Convention, Willard Kolb spoke to attorney Richard Lancione, who represents the Bellaire Glass and Artifacts Museum. Willard mentioned that the NCC might be interested in purchasing the Sample Room glassware from them. Willard took the inventory list to Lynn Welker so a fair offer could be made by NCC. Since that time, Willard has worked diligently with Bellaire board members Helen Clark, Bill Starrett, Lucile Kennedy, Ralph Hadley, and Alice Starrett. Willard submitted an offer from NCC and it was accepted by their board of directors. If it had not been for these people working cooperatively, the glassware would not have been acquired by our museum. The NCC owes all of these people a "THANK YOU" for their hard work and effort.

On Saturday, August 17, a truck and two vans traveled to Bellaire to retrieve 40 boxes of Cambridge glass. NCC members making the trip were Carl and Shirley Beynon, Rich and Steve Bennett, Sharon Miller,

(Continued on page 4)



Inside This Issue:

Smooth Transitions
And the winner is ... Cambridge Arms
Museum News and Notes
November Quarterly Meeting
NCC at Great Northeast Show
August Quarterly Meeting Minutes
NCC in Lee's Summit, MO
Something interesting...

Cambridge Crystal Ball

Official publication of National Cambridge Collectors Inc., a non-profit corporation with tax exempt status. Published once a month for the benefit of its members. All rights reserved; reproduction in whole or in part without written permission of NCC and the author is prohibited.

Membership is available for individual members at \$20.00 per year and an additional \$3.00 for associate members (12 years of age and older, residing in the same household). Of the master member dues, \$14.00 is credited to a one-year subscription to the *Crystal Ball*. All members have voting rights, but only one *Crystal Ball* per household. Multi-year memberships are available: 2 years for \$38.00, 3 years for \$56.00.

2001-2002

OFFICERS AND COMMITTEE CHAIRPERSONS

President	Richard D. Jones
Vice President	Tarzan Deel
Secretary	Ken Filippini
Treasurer	Dennis Snyder
Sergeant-at-Arms	Charles Upton
Acquisitions	Lynn Welker
Budget & Finance	Mike Strebler
By-Laws	Bud Walker
Corresponding Secretary	Charles Upton
Endowment	George Stamper
Facilities	Carl Beynon, Joe Miller
Grants and Fundraising	Sharon Miller
Long-Range Planning	Mike Strebler
Member Services	George Stamper
Membership	Larry Everett
Museum	Cindy Arent
Nominating	Tarzan Deel
Non-Glass Items	Carl Beynon, Bill Hagerty
Program	David Ray
Projects	Bill Hagerty
Publications	Mark A. Nye
Publicity	Cynthia A. Arent
Study Group Advisor	Ken Filippini
Technology	Linda Roberts
WebMaster	Linda Roberts
2002 Convention	Mark A. Nye
2002 Auction	Squeek and Dorothy Rieker, Lynn Welker
2002 Glass Show	Mary Beth Hackett, Joy McFadden
2002 Glass Dash	Larry and Susan Everett
<i>Crystal Ball</i> Editor	Lorraine Weinman
<i>Crystal Ball</i> Circulation Directors	Sharon and Joe Miller

Internet website www.cambridgeglass.org

THE NEW NATIONAL CAMBRIDGE COLLECTORS MUSEUM AT 136 SOUTH NINTH STREET IN CAMBRIDGE, OHIO, IS NOW OPEN.

THE NCC MUSEUM DISPLAY IS STILL LOCATED ON WHEELING AVENUE IN PENNY COURT MALL IN DOWNTOWN CAMBRIDGE, OHIO.

ADVERTISING RATES
(effective November 1, 2001)

Display Rates (camera ready ads preferred)

Unit	Rate
Full Page	\$50.00
3/4 Page	\$40.00
1/2 Page	\$30.00
1/4 Page	\$20.00
1/8 Page	\$15.00

(\$5.00 additional if a photograph is included in display ad)

Classified Rates

10 cents a word \$2.00 minimum

Abbreviations and initials count as words. Type sizes cannot be mixed in classified ads. **Payment in full must accompany all ad copy.** Contact Editor for copy assistance.

Dealer Directory

Six Line Maximum \$24.00 for 12 month contract

Also included - Listing on our Internet site at:

www.cambridgeglass.org

Cambridge *Crystal Ball* assumes no responsibility for items advertised and will not be responsible for errors in price, description, or other information.

Advertising copy, letters, articles, must be received by the 5th of preceding month to be considered for publication in the next issue.

Opinions or information stated in any signed article or letter printed in the *Crystal Ball* are those of the author and may not agree with National Cambridge Collectors, Inc. The Editor reserves the right to refuse and to edit any material submitted for publication to conform to the editorial style of the *Crystal Ball*. Members are encouraged to write to NCC and the *Crystal Ball* sharing their knowledge and questions.

Please address all correspondence (include SASE) to:
(or E-Mail NCC_CrystalBall@yahoo.com)

National Cambridge Collectors, Inc.
P.O. Box 416
Cambridge, OH 43725-0416

President Rick Jones	914-631-1656
Vice President Tarzan Deel	540-869-3949
Secretary Ken Filippini	201-670-0990
Membership	email: db0098@dragonbbs.com
NCC Museum: Phone	740-432-4245
Fax	740-439-9223

Please notify us immediately of any address change.

Obituary Policy: (Effective November 1, 2001) Obituary notices of ¼ page or less will be printed free. Larger notices will be billed at the standard display ad rate.

**2002
Calendar Planning**

November 2, 2002 (registration due **before** Oct. 19)

November Quarterly Meeting
Education Program on Bar-Related Items
Holiday Inn
Cambridge, Ohio

Social Hour at 5:00 p.m.
Dinner Buffet at 6:00 p.m.
Program/Quarterly Meeting at 7:30 p.m.

MARK YOUR CALENDAR NOW...



**THE NATIONAL MUSEUM OF
CAMBRIDGE GLASS
IS NOW OPEN!**

136 South Ninth Street in Cambridge, Ohio

The museum is handicapped accessible with plenty of parking. It is open April through October: Wednesday - Saturday, 9 a.m. to 4 p.m.; and Sunday, noon to 4 p.m. Closed Easter and July 4. Admission: Adults, \$2; Members and children under 12, free. Phone 740 432-4245.

President's Message



Smooth Transitions

One of the greatest things about the last few years in NCC has been how many people have come forward and said they want to be more involved. We have a lot of very talented members and harnessing this enthusiasm is going to be an important element of our ongoing success as an organization.

This year, a number of changes are taking place in key positions within the club. Normally, that's a very risky thing. However, we are so prepared for this, have such capable people ready to go, and have previous chairs who are very cooperative in insuring a very smooth transition.

The first place to start is probably this newsletter. After seven years as our editor, Lorraine Weinman is stepping down to attend to items in her personal life. Lorraine has been so committed to the *Crystal Ball* – one of the most demanding jobs in NCC. It requires meeting monthly deadlines, networking with members and the outside world, recruiting articles and ads. It's a very tough job for one person so do. So tough in fact, that we are replacing her with more than one person – it's a whole new team.

Leading the charge will be Alex Citron, a member from Virginia who works professionally in the newsletter business. He'll be assisted on the content front by Les Hansen of Minnesota. They are also talking to a long-time member to help out on important research for articles and look at "re-dos" of early *Crystal Ball* articles – updating them with newer knowledge. We are also talking to a member about taking on the important role of advertising and marketing.

Lorraine is not leaving, she's moving – moving on to head up Publicity. This is also a very important position for the club, but does not have the same monthly deadline requirements. This job has been handled for as long as I can remember by Cindy Arent. Cindy has been occupied by the enormously important and demanding work at our new Museum. This will give her relief from one of her tasks.

Also needing relief was Jeff Ross, who is our long-standing membership chairperson. He has done a great job for NCC but now has two young children to care for – talk about time demands! Again, we are fortunate to have Dr. Larry Everett who is ready, willing, and able to step in and put his own unique stamp on this position. There is no more important task than membership and we know Larry has many new and fresh ideas to build our total membership and increase the value of membership to our existing members. I can't thank Jeff enough for all he has done, how much support he has provided me through the years and all the unsung hours he has spent in behalf of the club.

We've also turned over our Budget and Finance Committee in a long-planned transition. First, we had a year to build a plan for Charlie Upton's retirement as treasurer. You talk about tough shoes to fill. Charlie has been Mr. Everything for the last

several years. Fortunately, Dennis Snyder had worked with him in many accounting areas and is now ably assisting Lisa Neilson who is "staffing" our club office.

Again, ready and raring to go was Mike Strebler, our newest NCC Board member. Mike is taking over Budget and Finance, a great spot for him as he works as CFO for a non-profit trade association. His 9-to-5 experience will benefit us greatly in the 24/7 world of National Cambridge Collectors. Our heartfelt thanks to Charlie, Dennis, and Mike, who have been the backbone of our financial operations.

And finally, for now, is a change at Convention. I believe that all events need to be "freshened" every so often and in 2003 we will have new convention chairs – Georgia Otten of Dayton, Ohio, and Shelley Citron of Charlottesville, Virginia. They too have very tough shoes to fill as Mark Nye has been doing an extraordinary job with Convention for many years. Shelley and Georgia are very creative and energetic. We look forward to a lot of new ideas from them – but they're going to need your help. This is a very big position and requires a lot of teamwork and volunteers from the membership for making our showcase week as good as it can be.

Here too, Mark is not leaving - he is taking on a very important role for the club – tackling our museum-owned paper. Much of the paper was damaged in the flood of 1998. Mark is going through the painstaking process of accounting what we have – not just what was flood damaged, but in overall paper inventory. This will help shape decisions on how we organize the research area of the new museum - another very big job. Oh, by the way, Mark will continue as our lead book author. He has two more in the pipeline. What a treasure to NCC Mark Nye is!!!

As you can see, a lot is happening and it is really good – new people are getting involved, events are being freshened, people are being freshened and we hope it all adds up to an even better experience of being a member of NCC.

Bill

Have you visited our website lately?

Come see the changes!

There's often something new...

<http://www.cambridgeglass.org>

(SAMPLE ROOM GLASS—Continued from page 1)

and Cindy Arent. Officers Bill Starrett, Helen Clark, Ralph Hadley, and Alice Starrett of the Bellaire Glass and Artifacts Museum welcomed us warmly and helped load the boxes.

When we arrived back at the museum, it didn't take long to open the boxes because we were so excited! A few of the items unpacked were 10 pieces of Mardi Gras. [Part of this is pictured on the cover.] NCC Museum employee Dorothy Golden, who also worked at The Cambridge Glass Company, was very excited because she suggested the name "Mardi Gras" when Cambridge management was searching for a name for the new line. Initially, Dorothy said that they were going to name the line "Confetti." However, because it was Mardi Gras time in New Orleans, Dorothy suggested they name it Mardi Gras.

After the NCC Quarterly meeting on August 24, a group of members cleaned the glassware at the museum. Members were very careful not to remove the original Sample Room labels. The glassware is now ready to be numbered, entered into the museum inventory system, and placed in the "Museum Sample Room Exhibit" and display cases. Again, thank you to everyone who worked on this project. We are very fortunate to have so many members and friends working for the betterment of our organization.



Pictured above are some of the volunteers who helped clean the newly acquired Sample Room glass.



Officers of the Bellaire Glass and Artifacts Museum (L-R Alice Starrett, Helen Clark, Bill Starrett) met NCC members at their storage area to help load the Cambridge "Sample Room" glass.

IN MEMORY OF PAM EARUSSI

Word has come to us of the passing of long-time NCC member and glass show dealer Pam Earussi. Pam passed away on August 29, 2002.

Pam is preceded in death by her husband Bill. She is survived by her children, Laura and Windsor Tracy, Lisa Earussi, and George and Mindy Earussi.

Pam and Bill started collecting Cambridge when Pam's mother gave them a Cambridge pitcher and glasses that she had received as a wedding gift. She was secretary of the Elegant Glass Study Group.

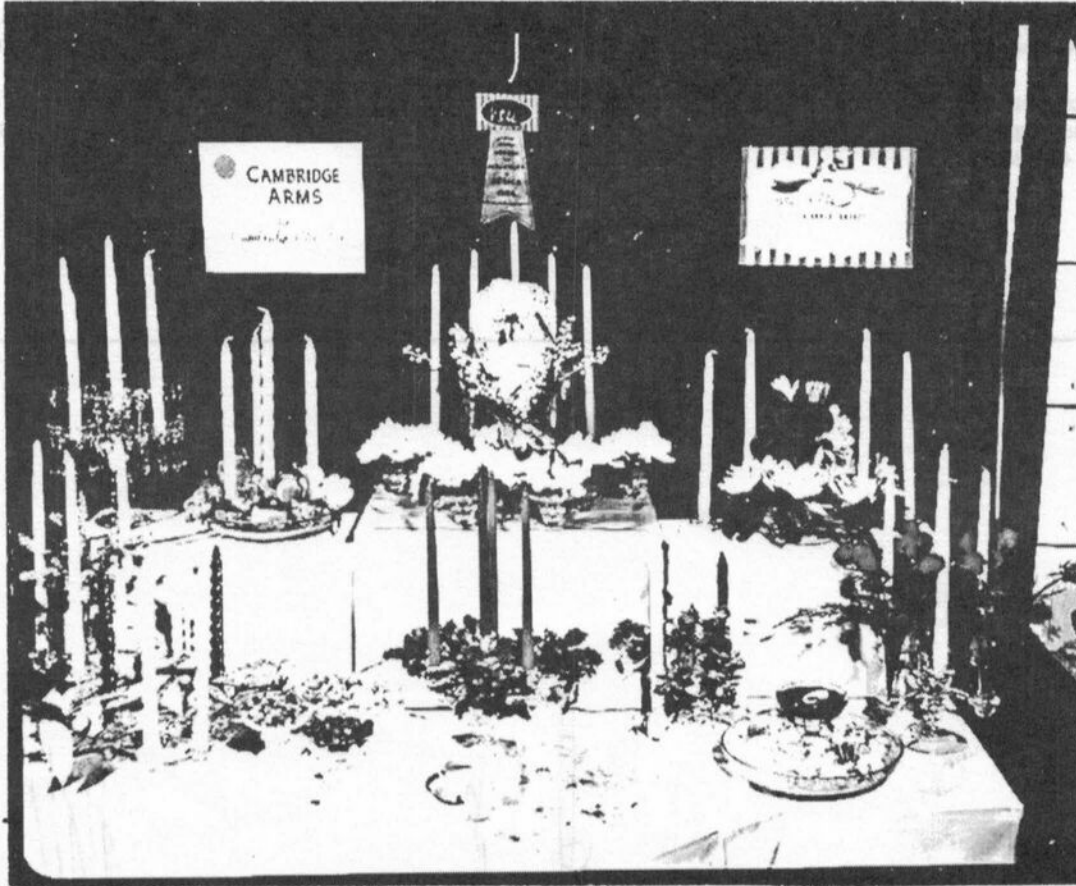
Pam was well-known to many of us and will be missed. We wish to extend heartfelt sympathy to her friends and family.



From the Sample Room collection: pictured are two pink crackle nude stems and an all-pink nude stem ashtray.

And the winner is ... Cambridge Arms

by Cindy Arent



The Cambridge Glass Company - November 1955

This photo shows the Cambridge Arms display in the "Starlight Room" at the Waldorf Astoria Hotel in New York City. The Cambridge Glass Company won the grand award for versatility in design and use over all of the merchandise displayed.

The following information was taken from a file that Cambridge Glass Company sales representative Andy Anderson kept in his records. Mr. Anderson lived in Minnesota and was a salesman for The Cambridge Glass Company for 25 years. Both Andy and his wife Nan were very good friends with Mary Martha Mitchell. Mr. Anderson's file on Cambridge Arms was sent by Mrs. Anderson to Mary Martha Mitchell after her husband passed away.

The Cambridge Arms line was first manufactured in 1948, and was produced until the final plant closing. Wilbur L. Orme invented the very versatile line for The Cambridge Glass Company. The first patent was received in September 1948 (Patent Number D151,067), and again in August 1949 (Patent Number D154,701 and Number D154,796).

During this time period, department store windows hosted beautiful displays of Cambridge Arms arrangements. Included in this article are photos from store windows in Minnesota and South Dakota. Thus the popularity of this line continued to expand.

In the fall of 1955, veteran Cambridge Glass Company salesman Andy Anderson began planning the Cambridge Arms display for the 5th Annual Hess Brothers of Philadelphia "Versatility in Design and Use" trade show to be held that November in New York City. On

(Continued on page 6)

(CAMBRIDGE ARMS—(continued from page 5)

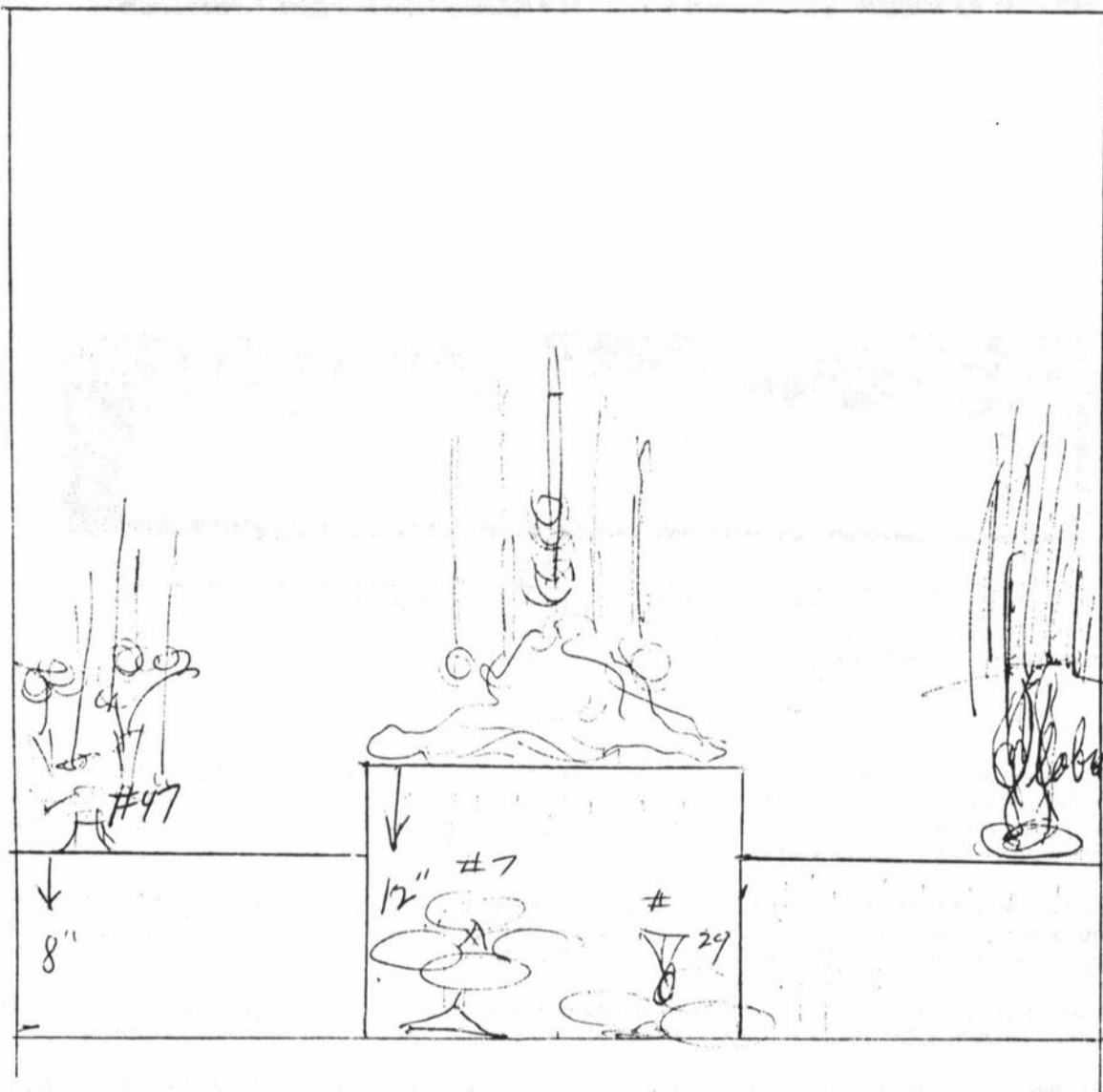
page 7, is the letter written to Mr. Anderson by Mary Martha Mitchell, as well as the design "scratch sheet" used by Anderson as he tallied the number of each item that he would need for his display. The pencil design drawing used for the presentation is also included on page 8.

Finally, on November 15, 1955, the hard work and effort culminated at the Hess Brothers trade show in the "Starlight Room" at the Waldorf Astoria in New York City. The Cambridge Glass Company had won the Grand Award surpassing all competition. The photo of the display was taken on that day.

The company printed a Cambridge Arms advertising booklet which describes their product. The booklet states "A sparkling new idea in decorative arrangements has been created by The Cambridge Glass Company. Scores of different arrangements in gleaming crystal-clear glass are possible by using the basic units illustrated below."

"Whether the setting is casual or formal, these lovely crystal appointments will enhance your table with rare beauty and charm. And...with a little experimentation...you may enjoy the thrill of creating your own arrangements...with sparkling Cambridge Arms!"

Now is the time to unpack your Cambridge Arms collection or start collecting a set. Use your innovation to create your own unique arrangement! You might begin by trying some ideas for the holiday season. Then, submit a photo of your favorite creation to share with others in the *Crystal Ball*.



The Cambridge Glass Company

CAMBRIDGE, OHIO

11 October 1955

Dear Andy:

I have your note regarding exhibit at the Waldorf and everyone here feels that your plan is terrific! So proceed with the shelves and getting the material and advise us the number of items you will need shipped from the plant.

I also understand that you will take care of the candles and flowers, etc.

We will also include with the glass shipment the Cambridge Arms booklets.

When we have the reservations for hotel in New York and when the Cambridge people will arrive in New York - I will advise you.

If there is anything else you would like me to do at this end, Andy, please let me know -- because as you say -- "We gotta win!"

I hope that you are feeling ^{much} better, Andy, and for heavens sake take care of yourself -- because Hess Bros. haven't seen anything until they see you in action.

Best regards.

Sincerely,

A handwritten signature in cursive script, appearing to read "Marsha". The signature is written in black ink and is positioned below the typed name "Marsha".

Museum News & Notes



The Museum has been busy! Among the visitors to the Museum was this 4th Grade class from Park Elementary School in Cambridge. The students enjoyed watching the "Crystal Lady" video in the Museum auditorium. Also pictured, the Russell Booth family also viewed the video on the wonderful new 25" television they donated to the Museum. Now viewing will be so much easier for groups. Below the Booth family, pictured is Bill Douglas with Cindy Arent in the Glassmaking Display area. Mr. Douglas is the club/museum director for The National Heisey Glass Museum in Newark, Ohio. He was able to tour our Museum after attending a meeting in Cambridge regarding tourism, publicity, and a Guernsey and Licking counties "Glass Partnership." Cindy Arent and Lorraine Weinman attended this meeting to represent The National Museum of Cambridge Glass. Plans have been made to continue this discussion in November.



Several tours are planned for the Museum in the near future. In conjunction with its 11th annual Glass Gathering, the West Virginia Museum of American Glass, Ltd. in Cambridge, Ohio, participants will visit our Museum near the end of October.

Please make YOUR plans to visit soon since the Museum will close for the season at the end of October. (And reopen in April 2003.)

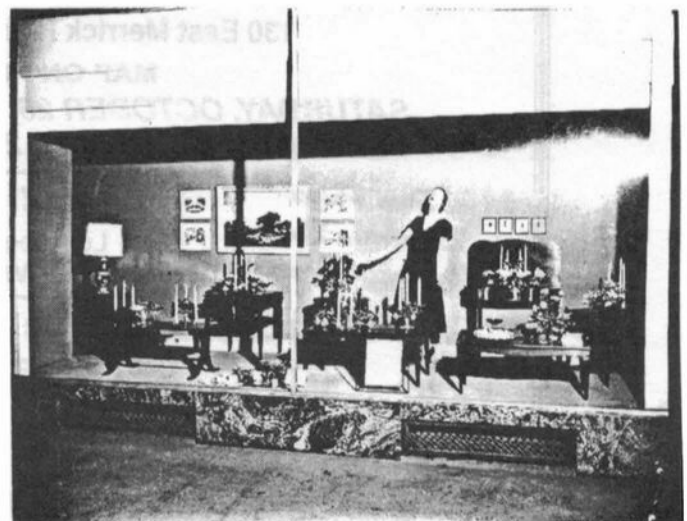
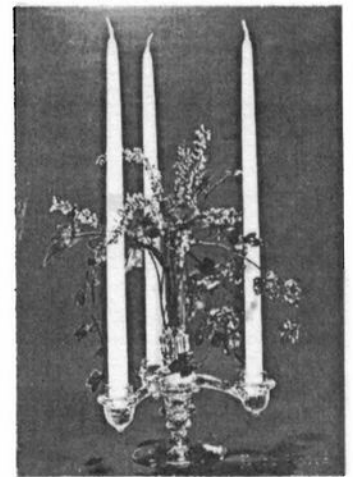


Cambridge Memories ...

From the same timeframe as the Cambridge Arms article: (to the right) In Mr. Anderson's file, this unit was noted as being a "good seller as a starter set." It included a #1563 4 Candle Arm, #628 Candlestick, 1633 Peg Vase and sold for \$6.00 per set.

(below, left) Kelley's Department Store window display - Madison, South Dakota.

(below, right) Cambridge Arms display in the window of Power's Dry Goods in Minneapolis, Minnesota.





47th annual fall
EASTERN NATIONAL ANTIQUES SHOW & SALE

Member
Professional Show Manager
PSMA
Association, Inc.

STATE FARM SHOW COMPLEX, CAMERON & MACLAY STREETS
EXIT 67, I-81, HARRISBURG, PA

NOVEMBER 22, 23, 24, 2002
Friday: 11-7 • Saturday: 11-6 • Sunday: 11-5


THE PREMIERE GLASS SHOW IN AMERICA

300 BOOTHS OF QUALITY ANTIQUES FEATURING



ART GLASS * CUT & PRESSED GLASS * CHINA * CRYSTAL * Slag Glass
Depression Glass * Heisey * ART POTTERY * PORCELAINS * ORIENTALIA
LAMPS * SILVER * JEWELRY * CLOCKS & WATCHES * TOYS & DOLLS
COLLECTIBLES * PRINTS * BOOKS * REFERENCE BOOKS
TRIBAL ART * PRIMITIVES * BRONZES * AMERICANA * ART NOUVEAU
ART DECO * Quilts & Linens AND MUCH, MUCH MORE

SPECIAL EXHIBITS & SERVICES
Old Morgantown Glass Collectors * H.C. Fry Glass Society
Early American Pattern Glass Society
Fostoria Glass Society of America * Heisey Collectors of America
National Cambridge Collectors Club
West Virginia Museum of American Glass, Ltd.
Sylvio's Glass Repair * Jewelry Cleaning * Collectibles Insurance Agency

ADMISSION \$6.00 * \$ 5.50 WITH THIS CARD—GOOD FOR ALL 3 DAYS
SHOW INFORMATION: 610-437-5334 * E-MAIL: JCMARIA@AOL.COM



FALL DEPRESSION GLASS SHOW & SALE

FREEPORT RECREATIONAL CENTER

130 East Merrick Road, Freeport, LI, NY

MAP ON REVERSE

SATURDAY, OCTOBER 26, 2002 • 12:00 TO 6:00 PM
SUNDAY, OCTOBER 27, 2002 • 10:00 TO 4:00 PM



Door Prizes
Reference Books
Unlimited Parking

Grand Prize
Luncheon Set
RED CROW'S FOOT

Free Depression Glass
ID & Appraisal
Sunday Only
(Limit 6 Pieces)

DONATION \$5.50 WITH THIS FLYER • 2 FOR \$5.00 EACH

Sponsored By
The Long Island Depression Glass Society, Ltd.
For Information Call (516) 798-0492

November Quarterly Meeting

Have you mailed your reservation to attend the November Quarterly Meeting of NCC, Inc.? Well, if you haven't, you still have about two more weeks. For only \$14.50, you can enjoy a fantastic dinner buffet and a very informative program on Cambridge Glass presented by Lynn Welker. As stated in the September issue of the *Crystal Ball*, this year's program topic is bar-related items. I know many of you have been searching your collections to find items to bring. But, for those of you who may be having difficulty, I have compiled a list of bar-related items that may assist you. (Do not consider this to be a complete list of all Cambridge bar-related items.)

Cocktail Shaker
Cocktail Churn
Square Decanter
Wine Decanter
Keg Set
Cordial
Old Fashioned
Hock
Cocktail
Samovar

Martini Cocktail Shaker
Pinch Decanter
Decanter in Farber Holder
Ice Bucket
Martini Pitcher
Wine
Shot Glass
Roemer
Brandy
Beer Mug

Cocktail Mixer
Ball Decanter
Cordial Decanter
Ice Tub
Bitters Bottle
Claret
Double Shot Glass
Sauterne
Brandy Inhaler
Dog/Cat Bottle

The majority of these items are found in the 1940s catalog reprint. I hope this gives a better idea of items that are considered bar-related. If you are willing to share a couple/few items from your collection, please plan to bring them to the November Meeting. Try to have all glass for the display at the Holiday Inn by 5:30 p.m. Glass identification and recent finds are also welcome. If you have any questions concerning the November Program, or if you would like to present a future program, please contact me at westervillesh@hotmail.com.

See you in November.

NOVEMBER QUARTERLY MEETING REGISTRATION FORM

Saturday, November 2, 2002
Cambridge Holiday Inn



Name(s) _____

Number Attending _____

Amount Enclosed _____
 (\$14.50 per member)

Mail to:

National Cambridge Collectors, Inc.
 P.O. Box 416
 Cambridge, OH 43725-0416

NCC at Great Northeast Show

by Freeman Moore



Crackle. Smoke. Champaign. Sauterne. Pistachio. Sweetmeat. These describe just some of the Cambridge nudes displayed at the Great Northeast Depression Era Glass and China show. This was held August 10 and 11 in White Plains, New York, at the Westchester County Center. As you entered the show, you were greeted with the sight of the NCC table. NCC has been fortunate to have been offered a table for several years. Now, once you look past the NCC table, you'll find 58 dealers taking over the floor and stage of the huge Center.

The NCC table was staffed by several people throughout the two days. Ken and Jane Filippini organized the main table and display. Tarzan Deel provided the Royal Blue Mt Vernon candy dish, which he happened to pick up at the show. Jeannie and Freeman Moore provided relief and friendly faces to people stopping by the table. Alex and Shelley Citron also provided relief duty. Book sales were brisk and the good word of Cambridge was spread.

People repeatedly asked if the "Show" part of the NCC table was for sale. We had to say "no - this is the 'show' part and the dealers represented the 'sale' part. It was easy to see why people were interested in the Cambridge display. Two wooden display cases of Cambridge nudes anchored the 8-foot table. The centerpiece of the table was divided among Carmen and Amber flying lady bowls. The cases were topped off by Crown Tuscan and Willow Blue flying lady bowls. It seemed like the display cases held nudes of every size or color. Thanks to Ken and Jane for setting up a display that caught the attention of attendees.

REGISTRATION FORM
ON OTHER SIDE
FOR THE
NOVEMBER QUARTERLY MEETING
AND
EDUCATIONAL PROGRAM

National Cambridge Collectors Inc.

Quarterly Meeting Minutes

August 24, 2002

As a prelude to the afternoon's program, Cindy Arent opened the luncheon by discussing NCC's purchase of original Cambridge factory Sample Room glass from the Bellaire Glass and Artifacts Museum. Cindy gave a short history of the glass, which began its journey in 1958 when the factory closed, to Imperial Glass who purchased it. In 1970, the president of Imperial transferred the glass to the Bellaire Museum, where it was on display until they closed around 1991. Since then, the glass has remained in storage. NCC lifetime member Willard Kolb has recently been working with the board of directors for the Bellaire Museum, and has tendered an offer of \$8,000 on behalf of NCC, that offer has been accepted.

The glass has made its way home to NCC for its final resting place in the NCC Museum. Cindy relayed that there were 40 boxes of glass, which included 10 pieces of Mardi Gras, several crackle Nudes, and other interesting pieces many with original sample room labels. Cindy introduced Willard, and thanked him for all the work he put in to procure this piece of history for NCC. Willard discussed how this purchase came about, and informed us that the glass was purchased with the understanding that any duplicates owned by NCC could be auctioned off. Cindy invited all those present to come to the Museum after the meeting to help wash the glass.

President Rick Jones then called the official Quarterly Meeting of the National Cambridge Collectors, Inc. to order at 1:30 p.m. on August 24, 2002, at the meeting room in Theo's restaurant. A motion was made by Mark Nye, and seconded by Georgia Otten to dispense with the reading of the June 29, 2002 Quarterly Meeting minutes. The motion carried and the minutes were approved as published in the *Crystal Ball*.

Treasurer's Report – In Dennis Snyder's absence, Mike Strebler reported that NCC has about \$82,000 in cash and investments, along with another \$20,000 in the Endowment Fund. Mike reported on significant discussion by the NCC Board concerning NCC's investment portfolio, and said that the Board had voted to reduce risk by liquidating the NCC portfolio and to invest the funds in interest bearing accounts. Mike said that Budget & Finance would look into what would be the best available interest rates. Rick explained why the Board made this decision at this time, stating that a two- to three-month period of risk free money management seemed prudent based on the uncertainty of the market. Further the Board felt it was time again for NCC to try and refinance the Museum mortgage in order to take advantage of the lower interest rates.

Budget and Finance – Mike Strebler reported that he was in the process of developing a monthly budget for NCC.

By-Laws – Bud Walker read a proposed change to the By-Laws. Proposed change to By-Laws Article III - Board of Directors Section I (d) reads:

It may fill vacancies that occur during the year. The president shall appoint, and the Board confirms by two-thirds vote of those in attendance, a member to fill any vacancy occurring. Said

appointee shall serve for the balance of the term being vacated.

Proposed change by Frank Wollenhaupt: "As soon as practical after the new board members are announced, the number of votes received by each candidate shall be made available to all club members and published in the *Crystal Ball*. Should there be a board vacancy, the president shall, within 30 (thirty) days, fill the vacancy with the candidate that received the most votes in the immediate past general election that wasn't elected to the board. If this person chooses not to serve, the candidate with the next highest number of votes will be asked to serve. Should there be no candidate remaining that received votes from the most recent general election: the president shall nominate an at-large candidate from the general membership. A nominee must receive majority board approval before the vacant seat is deemed filled. Board members not elected by the general membership shall serve a term that expires when the next newly elected board members are seated. Their seat(s) brought about by the vacancy. All elected and appointed board members may seek re-election as incumbents."

After reading this proposal, Bud reported that based on a couple of items, for instance publishing the number of votes in the *Crystal Ball*, the Board decided to vote it down in its current form. Bud said that the Board liked the concept but felt it needed some refinement. Discussion followed and it was decided to refer this matter back to the By-laws committee for further review.

Fund Raising – Sharon Miller reported that the Century Club has 238 members: raising funds that total \$25,239 year to date.

Membership – Larry Everett reported that NCC has total members of 1289, up from June's total of 1245: Master Members – 903, Associate Members – 376, Honorary – 6, Lifetime – 4.

Museum – Cindy Arent reported that work goes on, that all donated glass from Convention had been numbered and put on display. Cindy said that Carl was in the process of moving the showcase plaques from the bottom of the cases to the top; that more pictures had been hung, some being original photos; that the local Lion's Club had a luncheon and meeting in the Museum back room, and then donated \$100 to the Century Club; and that the Heisey Club donated 25 books to the NCC Museum for the clubs library, and also donated negatives for what appeared to be the Cambridge laboratory line. Cindy also reported that the Guernsey County Historical Society tour group visited the Museum. Cindy showed a picture of a trunk that is believed to have been used by the Cambridge factory to ship glass around the country, and this trunk is now in the possession of NCC. She also reported that the Cambridge Cordials will donate several glass cases that were purchased from the Bellaire Museum.

Non-glass – Rick Jones reported that under the club's restructure plan a new category called Education will be headed

(Continued on page 14)

QUARTERLY MEETING MINUTES—(Continued from page 13)

by Sharon Miller and Mark Nye. Mark Nye will take over under non-glass, all control and disposition of the club's paper products - to include all stored materials at the Storage Building. Mark briefly reported on the current state of the paper in the Storage Building, what steps needed to be taken at this time, and that he'll report back in November.

Programs – David Ray announced that the program for the November Quarterly Meeting will be on bar related items and that Lynn Welker will be the program moderator. The Quarterly Meeting will be held at the Holiday Inn on November 2, 2002. Cocktail hour begins at 5:00 p.m., all glass items need to be in by 5:30 p.m., dinner at 6:00 p.m., Quarterly Meeting at 7:00 p.m. to be followed by the program. David requested that donators to the program should bring items such as decanters, shakers, martini sets, ice buckets, bitters bottles, etc. The more that people bring, the better the program will be.

Publications – Mark Nye reported that the proposed book on Rock Crystal has hit a snag - the reproduction of the illustrations was not working as well as he hoped. Mark is giving this issue further thought. Mark also reported that the book on the History of Cambridge Glass is a slow ongoing process.

Publicity – Cindy Arent reported that work on a one-page Museum brochure is ongoing, that Alex and Shelly Citron are taking over this project and will donate the monies needed to produce the first printing.

Study Groups – Ken Filippini - no report

Technology and the Web – Linda Roberts reported that the board minutes continue to be loaded onto the web, and that traffic continues to be heavy. Georgia Otten brought into discussion the web page and suggested that NCC's could be updated and also suggested that the Imperial Glass page could be used as a model.

Crystal Ball – Rick Jones reported that in the vein of reorganization, the *Crystal Ball* editor would switch from Lorraine Weinman to Alex Citron around November. The members in attendance thanked Lorraine for the seven long years of tireless effort she had given to this post. Alex reported that some of the exciting changes that are envisioned include getting some color into the *Crystal Ball* and perhaps development of electronic distribution via email. Rick elaborated on the setting up of a *Crystal Ball* committee to include such possible posts as content editor, research editor, advertising & marketing manager, etc. Les Hansen has volunteered to serve in a senior position focused on generating new content from members and others.

Convention – Rick Jones reported on another phase of the club's transition ... "to freshen" the convention, Georgia Otten and Shelley Citron had been invited to serve as chairs. Thanks to Mark Nye for the yeoman job he has done as convention chair for many years!!!

Glass Dash – Larry and Susan Everett have graciously agreed to continue running the glass dash, and reported that this year's attendance was record setting. Larry thanked the Miami Valley Study Group for all their assistance.

Events – Rick Jones announced that Ken Filippini would be taking on the new post of Events chairman. This post will help facilitate with coordination and be a clearing house to help individual event chairmen such as glass dash, glass show, auction, etc. with their needs.

Auction – Rick reported that Dorothy and Squeak Rieker would once again chair this year's auction, which will take place the first weekend in March.

Old Business – None

New Business – Georgia Otten thanked Ken and Judy Rhoads for this year's mentoring program, stating that there has been tremendous favorable response. Ken Rhoads in turn thanked Judy and all the NCC members who functioned as mentors, which was why Ken felt the program was such a success.

Alex Citron made a motion to adjourn the meeting; Judy Rhoads seconded the motion. The motion carried and the meeting was adjourned at 2:30 p.m.

—Respectfully submitted by Ken Filippini



Letter from the Editor:

As you probably read in the "President's Message," I will be stepping down as editor of the *Crystal Ball* as of this issue. I would like to thank the membership for the opportunity to serve as the *Crystal Ball* editor for the last seven years. I would also like to thank everyone who contributed articles and ideas. I think the *Crystal Ball* has grown tremendously and I am proud of the job we have done to try to keep it responsive to the needs of the club.

The *Crystal Ball* is the primary organ for club communications. As such, I have been particularly pleased to see more information coming in from study groups, committee chair people, individuals, and the leadership. These kinds of stories keep everyone informed about the challenges facing the club. They emphasize solutions being taken and calls for volunteer action. We have also had many wonderful articles about glass. The club is blessed with many people with both the knowledge of their chosen subjects and the ability to convey that knowledge in writing.

As we go forward, I will be chairing the Publicity committee and will be submitting articles to keep you posted on our progress.

Again I would like to thank you all for your support and contributions.

Lorraine

NCC in Lee's Summit, MO

by Shelley Citron

The National Depression Glass Association was kind enough to allow NCC to set up a Membership/Book Sales table at their convention in Lee's Summit, Missouri, July 18-20. The meetings and seminars took place at the Summit Inn & Suites while the sales and displays were across the street at the John Knox Pavilion.

President of NDGA, Kent Washburn was at our NCC Convention this year as an honored guest at the Grand Opening as well as a dealer at the show. During the NDGA business meeting he had very kind words to say about NCC, our new museum, and our convention. Close to 20 members of NCC attended the annual meeting. (And we have it on good authority that a few more were standing in line to be first into the sale.)

Seminars were given on Imperial Milk Glass, Slag, and Opaques; Imperial Candlewick; Rare and Decorated Tiffin; and Cambridge Glass. Jim Rose, who presented the Cambridge seminar, is the owner of an impressive collection

of Moonlight Blue Caprice which was on display at the show. Some of the other 23 displays presented Hall Pottery, Franciscan Duet, Tom & Jerry Sets, Westmoreland Dresser Sets, and Fostoria Seville. Another Cambridge-themed display was Farberware with Cambridge inserts owned by Helen and Gene Allen. This was also a beautiful and impressive collection.

Another aspect of the show was the display of a portion of the NDGA Glass Collection. In 1999, the board of directors of NDGA authorized establishment of a National Glass Collection. NDGA accepts glass donations and displays it at shows across the country. At each convention they show a representative sample of the donations from the preceding year. Glass from all companies is displayed. This year, in addition to the glass, the program from our Museum Grand Opening and a section of the ribbon were on display along with a pair of Amber single-light, Keyhole candlesticks, etched Diane.

The sales floor was filled with beautiful glass and pottery from all manufacturers. Thirty-two dealers came from across the country – Washington to Florida, New Jersey to Texas. And the buyers came from across the country – more than 1,200 of them. Everyone seemed to find something to take home.

NCC had a prime location just inside the main door to the Pavilion. Everyone passed us coming in and going out and many of them stopped to chat, ask questions, look at and buy the books and Scottie Dog Bookends. Sales were very strong and seven pair of Scotties went home with new owners.

Members of NCC should be very proud of the amount of research that we have made available to collectors. Sitting at that table with all of those titles was a good feeling. The first time I helped out at a book table, I felt very intimidated and not really sure I was up to the task. But I soon saw how much I would learn by sitting at that table. Not one of us knows it all (okay, maybe Lynn does) but it's okay to say, "I just don't know." That's what gets us looking for the answers.

David Adams, a dealer/collector from Las Vegas has been collecting Cambridge Flower Frogs for years. He has extensive information on Flower Frogs on his web site, www.ourhouseantiques.com. He, like so many of us was sure that the Draped Lady with the ribbed base was made by Imperial. Looking through the 1956 Cambridge Catalog Reprint this past weekend he came upon a picture of the Draped Lady with an apparently ribbed base. There he stood with a light blue (Moonlight?) Draped Lady with a ribbed base that he had been sure was Imperial. Now the question is, could it be Cambridge??

This is one of things I love about collecting Cambridge glass – the detective work. Next time you are asked to help out with a book table, say yes – you won't regret it. Better yet, talk to the organizers of local glass shows. They'd probably love to have NCC set up a table.



NATIONAL STUDY GROUPS



Some Study Groups already exist. Listed below is contact information if you are interested in a group in your area. If there is no group in your area and you are interested in starting or being a member of a study group, please contact the *Crystal Ball*. It is very easy to get your group going once you find other interested members.

Study Group #13—The Miami Valley (Ohio) Study Club

Contact: Larry Everett
db0098@dragonbbs.com
937 675-6491

Study Group #14—The Cambridge Cordials

Contact: Lorraine Weinman
blweinman@hotmail.com
330 966-9376

Study Group #15—North Texas Cambridge Study Group

Contact: Scott Pierce
scottpierce1@msn.com
817 427-9510

Study Group #16—Elegant Glass Collectors

Contact: Bill Dufft
billnvon@aol.com

**Study Group #17—The Cambridge Wildflowers
(Columbus, Ohio)**

Contact: Barbara Wyrick
bwyr@ee.net
614 291-0361

Study Group #18—Virginia-Maryland-DC Study Group

Contact: Alex Citron
apcpenguin@aol.com

Study Group #16 Elegant Glass Collectors

The Elegant Glass Collectors study group met on Sunday, August 18, 2002, at the home of Gail and Paul DuChamp. Members attending were Ken and Jane Filippini, Charles and Loretta Weeks, Bill and Yvonne Dufft, and Alex Wolk. The group welcomed new members Diana and Charlie Rizzo, Joanne Berringer, Myrle Scott, Craig and Lori Kratchovil, Tom Mintz, and Cathy Comora.

Ken Filippini asked for help in gathering information about each study group's history, founding members, programs done, projects, etc. He also advised the group that he is working on a packet on "How to Start a Study Group" and asked each member to think of suggestions on this subject and also what a study group can do to help NCC and come up with ideas for future study group programs.

We also had a discussion on the upcoming Harrisburg Pennsylvania show. Bill Dufft will contact the show coordinator to determine if the case we use for display will be without charge. The theme for the case was decided to be Cambridge vases. If the display is a "go," then members should bring vases to Loretta and Charlie's house at the next study group meeting.

There was an election of officers - elected president was Jane Filippini, secretary, Pam Earussi, and treasurer Bill Dufft.

Show and Tell included a Carmen Mt. Vernon pedestal candy box, Carmen 6" vase from the 1950 period, Carmen Tally Ho candlesticks, unusual Cambridge Square shrimp icers where the bottom is gold and the cup is edged in gold, 1324 black and white enamel decorated decanter with golf ball stopper, green 3400 cabinet flask with nautilus stopper, Farber cheese and cracker set with Roxbury cutting, pink Rosalie 3" vase with pink flower frog insert.

The DuChamps served a wonderful luncheon surrounded by their flower frog collection.

Our next meeting will be October 19 at the home of Charles and Loretta Weeks and there will be a program on Crown Tuscan moderated by Charlie Weeks.

—submitted by Jane Filippini for Pam Earussi

DO YOU BELONG TO A STUDY GROUP?

Right now there are people in the following areas wanting to start Study Groups:

**Canton/Massillon/Northeast Ohio
Florida
Michigan**

If you are in these areas and have an interest in sharing stories, learning more about glass, and having fun with fellow Cambridge glass collectors, write to Ken Filippini at the NCC P.O. box or call (201) 670-0990.

Have a question you would like answered?

Is there something that you would like to share with fellow NCC members?

Send your correspondence to the *Crystal Ball* c/o the NCC address.

We'd like to hear from you.

Something Interesting ...

I found this paper while cleaning out some of my papers that I have accumulated over the past 48 years of collecting Cambridge Glass. I don't remember where it came from and don't know enough about the making of glassware to authenticate the terms. These terms may have been terms used during the years that the factory existed and may not apply to today's glassmaking. I found the terms interesting and pass it along to you for your reading.

— Charles Upton

WHAT TO LOOK FOR WHILE INSPECTING GLASSWARE

Explanations of terms are given below:

CRACKED	WARPED	NOT FULL (12)
CRACKED FOOT	MISFITS	IRON ON BOTTOM (13)
CRACKED HANDLE	FINE GLASS (9)	SHEAR MARKS (14)
CHIPPED EDGES	TWISTED STEM	ROCKY (15)
CHIPPED BOTTOM	SUNK TOP	PRESSED UP (16)
CROOKED	OPEN MOULD (10)	PRESSED OVER (17)
CROOKED HANDLE	CRUSHED BOTTOM	MARKED FROM TOOLS
CROOKED KNOB	TOO HEAVY	WAVY
CRIZZLED (1)	TOO LIGHT	BLISTERED (18)
CORDY (2)	FLAT	BAD BOTTOMS
DIRTY (3)	FLAT FEET	RUN DOWN (19)
SEEDY (4)	NOT MELTED (11)	ASBESTOS DIRT (20)
STONY (5)	NOT POLISHED	MELTED TOO MUCH (21)
STUCK (6)	BAD EDGES	PINCHED (22)
SUNK (7)	BAD SHAPE	
SUCKED (8)	BULGED OUT	

Explanation of terms: (Some terms are self explanatory. Others are listed below).

1. CRIZZLED - Very fine surface cracks (with spider web-like effect) caused by the mould or plunger not being hot enough. Crizzle marks are not cracks running through the entire depth of the glass.
2. CORDY - Fine wavy or distorted lines caused by poor quality glass that has a different density than the rest of the piece.
3. DIRTY - Rough places caused by flecks of dust or dirt in the mould. Also caused by impurities on tools (oil, beeswax or dirt).
4. SEEDY - Minute bubbles caused by impurities in glass. Occurs when glass batch has not been "cooked" long enough to remove impure agents.
5. STONY - Stones are caused by small chunks of lime or other impurities that were not dissolved or melted during the "cooking" of the glass.
6. STUCK - A rough place caused by hitting the glass piece on something when warming in or re-heating the piece.
7. SUNK - Glass piece has fallen out of shape. This is caused by the piece being too hot when turned out of mould.
8. SUCKED - Glass piece has been pulled up or sucked up and out of shape when plunger was too hot causing glass to stick to plunger.
9. FINE GLASS - Tiny particles of powdered glass that fall down onto a piece of glass and stick to it.
10. OPEN MOULD- A crease caused by a joint in the mould when the mould is not completely closed.
11. NOT MELTED- Rough edges are caused by not getting the glass piece hot enough when warmed-in on the glazer.
12. NOT FULL - Glass piece not filled out completely due to the gather of glass being gathered short.
13. IRON ON BOTTOM- Iron (or scale) on bottom of glass piece caused by mould or plunger being too hot.
14. SHEAR MARKS- A rough, irregular crease caused by the improper cutting of the gather of glass by the presser.
15. ROCKY - Glass piece rocks on its foot or base. May have been caused by too quick a removal from the mould.
16. PRESSED UP- Appearance of a thin edge of glass pressed up between the plunger and the ring.
17. PRESSED OVER- Appearance of a thin edge of glass between ring and mould caused by the presser cutting the gather too heavy.
18. BLISTERED - An unwanted bubble or air trap caused from air getting into the glass while being gathered.
19. RUN DOWN - (Same as SUNK).
20. ASBESTOS DIRT- Asbestos stuck to glass. Caused by putting the object on asbestos paper when it was too hot.
21. MELTED TOO MUCH- Glass piece became lopsided. Caused by leaving piece on glazer too long and thus getting too hot. Could also refer to color burn out.
22. PINCHED - A squeezed glass piece caused by too much pressure having been exerted by the pinchers (tools that hold a hot glass piece as it is carried from mould to lehr).

~ GLASS ~ MARKETPLACE

Time to Advertise Here!

**Check our reasonable rates
on page 2**

UPCOMING EVENTS

- Oct. 12-13 Elegant and Depression Glass Show and Sale
Waxahachie, Texas
Information: (817) 545-5856 or (972) 396-8832
- Oct. 12-13 Atlanta Elegant Glass Show & Sale
Marietta, Georgia
Information: www.dixielandheisey.org
- Oct. 26-27 Upper Midwest Depression Era Glass/Pottery Show
Bloomington, Minnesota
Information: (651) 770-1567
- Oct. 26-27 Fall Depression Glass Show & Sale
Freeport, Long Island, New York
Information: (516) 798-0492
- Oct. 26-27 27th Annual Depression Glass Show & Sale
Lakeland, Florida
Information: www.glassaholics.com
- Nov. 16 Fostoria Glass Collectors Annual Benefit Auction
Orange, California
Information: (714) 526-4773
www.fostoriacollectors.org/
- Nov. 22-24 Eastern National Antiques Show & Sale
Harrisburg, Pennsylvania
Information: (610) 437-5534
JCMAENA@aol.com
- Feb. 1-2 South Florida Depression Glass Show & Sale
Ft. Lauderdale, FL
Information: (954) 985-1120
trainmon@bellsouth.net

Know of any interesting events or shows coming up?
Please let us know, and as space allows, we will print information
about these events.

WE CLEAN CLOUDY GLASS! SATISFACTION GUARANTEED

Yes, *it is true* that we really can restore the interior of your cruet, vase, decanter and other internally etched items back to near original condition.

We do not oil, wax or cover up the sickness in any way! We actually remove it.

No items are too sick to clean! If we cannot clean an item to meet your satisfaction, the cleaning is FREE!

Send no money up front When we return your item a bill will be enclosed for the postage and cleaning. If you are not satisfied, only the return postage is requested.

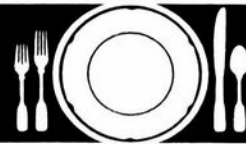
Most items clean in 7-8 weeks. All glass is handled and cleaned at your risk. Some very cloudy items may take several additional weeks.

Cocktail Shaker	\$35-\$40.00	Salt Shaker (1)	\$25.00
Cologne	\$30.00	Salt Shaker (2)	\$45.00
Cruet	\$30.00	Vases (under 10")	\$30-\$35.00
Decanter	\$35-\$45.00	Vinegar & Oil	\$30.00
Lavendar Jar	\$25-\$35.00	Water Bottle	\$35-\$40.00

Ship to: Kim Carlisle & Associates
28220 Lamong Road, Dept. C
Sheridan, IN 46069
(317) 758-5767

kcarlisl@indy.net

2002



Stems Without Thorns

As the world's largest supplier of old & new china, crystal, silver and collectibles, Replacements, Ltd. has more than 700 different patterns of Cambridge crystal.

And however much we enjoy selling pieces that were once thought irreplaceable, we love buying them as well. Thanks to people like you, our crystal inventory currently numbers in the hundreds of thousands, and the numbers keep growing every year.

So, if you've been unsuccessfully searching for that elusive piece of Cambridge — or any other type of fine crystal — call us for a free list of pieces available in your pattern. And, if you're looking to sell pieces you currently have, we can help you there, too.

REPLACEMENTS, LTD.
China, Crystal & Silver • Old & New

1-800-REPLACE
(1-800-737-5223)

1089 Knox Road,
PO Box 26029, Dept. CB,
Greensboro, NC 27420
www.replacements.com

DEALERS



DIRECTORY

NOTE: When writing to the dealers listed here, please enclose a SASE!

<p>DAUGHERTY'S ANTIQUES Jerry and Shirley Antiques and Collectibles * Mostly Glass www.daughertys-antiques.com Shows & Mail Orders 2515 Cheshire No 402-423-7426 Evenings Lincoln NE 68512</p>	<p>CRYSTALLINE COLORS Buy, Sell, and Appreciate Cambridge and Other Elegant Glass I Love Cambridge Lynne R. Franks 216-661-7382 Ohio & Western PA Antique Malls</p>	<p>THE JONES GROUP Cindy Jones Buy and Sell Cambridge Glass 650 Riverside Drive Sleepy Hollow, NY 10591 914-631-1656 or E-Mail Caprice0@aol.com</p>
<p>Milbra's Crystal Replacement and Matching Buy & Sell Specializing in Cambridge Milbra Long (817) 645-6066 Emily Seate (817) 294-9837 PO Box 784, Cleburne, TX 76033 E-mail longseate@flash.net Fostoria Heisey and others</p>	<p>Deborah Maggard, Antiques Specializing in Cambridge Glass, American Hand Made Glass & Victorian Art Glass Please stop and see our extensive collection of Cambridge Glass at Riverfront Antique Mall in New Philadelphia, Ohio (Exit 81 off I-77) Booths 805 and 812 You won't be disappointed! We buy one piece or entire collections, please contact me at 440-247-5632 & leave a message or email at debmaggard@worldnet.att.net PO Box 211 Chagrin Falls, Ohio 44022</p>	<p>Mary Jane's Antiques Early American Pattern Glass Depression Era Items  2653 Burgener Drive 217-422-5453 Decatur, IL 62521 mjhumes@aol.com</p>
<p>THE GLASS URN 456 West Main Street, Suite G Mesa, AZ 85201 480-833-2702 480-838-5936 Mail Order Shows Open Shop CAMBRIDGE, FOSTORIA, HEISEY, ETC.</p>	<p>THE DEGENHART PAPERWEIGHT AND GLASS MUSEUM, INC. P O Box 186 Cambridge, Ohio 43725-0186 Intersection of US 22 & I 77 Phone 740-432-2626</p>	<p>GATEWAY ANTIQUE MALL, INC. JUST NW OF MINNEAPOLIS-ST. PAUL, MN Next to Super 8 in Rogers, MN (I-94/101 Intersection) 85 Dealers 7 Days, 10-6 612-428-8286 ELAINE STORCK, OWNER/DIRECTOR</p>
<p>THE DEGENHART PAPERWEIGHT AND GLASS MUSEUM, INC. P O Box 186 Cambridge, Ohio 43725-0186 Intersection of US 22 & I 77 Phone 740-432-2626</p>	<p> Mother Drucker's Fanny Drucker Specializing in Elegant Glassware Shows and Mail Order P.O. Box 50261 Phone: 949-551-5529 Irvine, CA 92619 888-MDRUCKER Website: http://motherdruckers.com</p>	<p>Storck's Antiques Rick & Joyce Antiques & Collectables - Glass & Pottery Specializing in Fenton, Imperial & Cambridge Shows & Mail Orders - Storck1@aol.com Greenfield, MN 55373 (763) 477-6415</p>
<p>THE GLASS CUPBOARD P O Box 652 West End, North Carolina 27376 Marcia Ellis Cambridge Show 910-673-2884 and Mail Order</p>	<p>JUDY'S ANTIQUES Judy Bennett 422 S. Ninth Street (Corner of Jefferson) Cambridge, Ohio 43725 Bus 740-432-5855 Res 740-432-3045 CAMBRIDGE GLASS MY SPECIALTY</p>	<p>ISAACS ANTIQUES (740) 826-4015 See our booths in Penny Court Mall in Cambridge and White Pillars Antique Mall at Rt. 40, one mile west of I-70 Norwich Exit #164</p>
<p>FINDER'S ANTIQUE HOUSE 3769 Highway 29 North Danville, VA 24540 (434) 836-6782 Cambridge-Heisey-Duncan-Fostoria Open Wed -Sat 11:00 to 5:00 (Seasonal Hours Apply)</p>	<p>GREEN ACRES FARM 2678 Hazelton Etna Rd., Pataskala, OH 43062 (State Route 310 North) Sat & Sun 1-7 PM 740-927-1882 Antiques, Crystal Glass and Collectibles</p>	<p>CRYSTAL LADY Thurs - Sat 11-5 1817 Vinton St., Omaha, NE 68108 Bill, Joann, and Marcie Hagerty Shop 402-341-0643 Home 402-391-6730 Specializing in Elegant Glass & Collectibles www.crySTALLADYANTIQUES.COM</p>
<p>YOU CAN ADVERTISE YOUR ANTIQUe SHOP HERE!</p>	<p>The National Museum of Cambridge Glass 136 South Ninth Street Cambridge, Ohio (740) 432-4245 Open April through October Wednesday-Saturday 9 a.m. to 4 p.m. Sunday noon to 4 p.m. Closed Easter and July 4 Admission \$2 (members and children under 12 free)</p>	<p>PENNY COURT MALL 637 Wheeling Avenue Cambridge, Ohio 100 Booths 15,000 sq. ft. HOURS: Daily 10-6 Sunday Noon-5 Closed Easter, Thanksgiving, Christmas Call for Other Holiday Hours 740-432-4369</p>
<p>Mon thru Sat 10-5:30 Sundays 12-5:30 Bogart's Antiques BUY—SELL—APPRAISE—REFINISH CANE & REED CHAIRS - CLOCK REPAIR Jack & Sharon Bogart St. Rte 40 740-872-3514 Shop 7527 East Pike 740-826-7439 Home Norwich, Ohio 43767</p>	<p>ALADDIN LAMP BOOKS Free List Figurine Lamps Wanted Bill & Treva Courter 3935 Kelley Rd Kevill, KY 42053 Phone 270-488-2116 FAX 270-488-2055</p>	<p>MARGARET LANE ANTIQUES 2 E. Main St., New Concord, OH 43762 Lynn Welker 740-826-7414 Cambridge Glass Matching Service Hours Mon-Fri 10-12 AM, 1-5 PM or by Appointment</p>
<p>YOU CAN ADVERTISE YOUR ANTIQUe SHOP HERE!</p>	<p>DEXTER CITY ANTIQUE MALL P. O. Box 70, Dexter City, Ohio 45727 (740) 783-5921 Located on Ohio St. Rt. 821 Between Exits 16 & 25 off I-77 Just 30 min. South of Cambridge, Ohio</p>	



Snack Bar • Door Prizes

South Florida Depression Glass Club 29th Annual Show & Sale

February 1 & 2, 2003

War Memorial Auditorium
800 N.E. 8th Street
Ft. Lauderdale, FL

Early Buyers Preview Sat. 9 -10 am
Saturday 10 am -5 pm
Sunday 10 am -4 pm

Regular Admission: \$5.00
Preview Admission: \$10.00
(50¢ off with this card)

Directions:
Rt. 95 to Sunrise Blvd. East,
turn South on US 1 for 2 blocks

Information:
954-985-1120
trainmon@bellsouth.net



Bar-Related Items Program

Have you sent your registration yet?
Time is running out!

See page 11...

National Cambridge Collectors Inc
PO Box 416
Cambridge OH 43725-0416

<http://www.cambridgeglass.org>
e-mail: NCC_CrystalBall@yahoo.com

FIRST CLASS MAIL
U.S. POSTAGE
PAID
PERMIT NO. 3
CUMBERLAND, OH 43732

FIRST CLASS MAIL

Membership Renewal Notice

If the date on your address label is 10-2002,
this is your **LAST ISSUE** of the Crystal Ball.
Please take a moment and renew now. Thank you!