



Cambridge Crystal Ball

Published monthly by National Cambridge Collectors, Inc.
to encourage and report the discovery of the elegant and boundless product of the
Cambridge Glass Company of Cambridge, Ohio

Issue No. 323

March 2000

CHEESE PRESERVERS

by Mark Nye

We learn from the letters published this month that the 1571 square shaped cheese preserver jar was introduced in the fall of 1942. There remains some internal Cambridge correspondence that indicates preliminary planning for the smaller cheese preserver jar had begun by early May 1942. A review of the mold order book did not turn up a mold order for the 1571 jar. However, an order for a private mold for Dorset Foods, New York, NY, was recorded on August 17, 1942. The entry read: "0655 cheese preserver jar and cover, as per drawing and model that Kimbel has." In September the entry for another order read "New plunger for 0655 Cheese Jar with 2" high partitions. Make present partitions a little longer. Sides not so heavy."

(Continued on page 9)

Inside This Issue:

The Cambridge Swans - Part VI
2000 NCC Convention
Tentative Convention Schedule
Convention Motel Information
November Quarterly Meeting Minutes



1571 Cheese Preserver Jar

This covered Cheese Preserver Jar fills a long felt need for a container which will keep cheese in the condition in which it is purchased. And it is so easily used. Just follow the simple directions given on the cover. The solution will conserve and improve the flavor.

THE CAMBRIDGE GLASS CO.
CAMBRIDGE, OHIO

Cambridge Crystal Ball

Official publication of National Cambridge Collectors Inc., a non-profit corporation with tax exempt status. Published once a month for the benefit of its members. All rights reserved; reproduction in whole or in part without written permission of NCC and the author is prohibited.

Membership is available for individual members at \$17.00 per year and an additional \$3.00 for associate members (12 years of age and older, residing in the same household). Of the master member dues, \$12.00 is credited to a one-year subscription to the *Crystal Ball*. All members have voting rights, but only one *Crystal Ball* per household. **Multi-year memberships are available: 2 years for \$33.00, 3 years for \$49.00.**

1999-2000

OFFICERS AND COMMITTEE CHAIRPERSONS

| | |
|---|---|
| President | Tarzan Deel |
| Vice President | Richard D. Jones |
| Secretary | Sharon Miller |
| Treasurer | Charles Upton |
| Sergeant-at-Arms | Michael Neilson |
| Acquisitions | Lynn Welker, Lynne Franks |
| Budget & Finance | Dennis Snyder |
| By-Laws | Bud Walker |
| Corresponding Secretary | Charles Upton |
| Technology | Linda Roberts |
| Membership | Jeff Ross |
| Museum Relocation | Richard D. Jones |
| Museum Facilities | Carl Beynon, Joe Miller |
| Museum Interior | Lynn Welker, J.D. Hanes, Marybelle Teters |
| Non-Glass Items | Carl Beynon |
| Nominating | Rick Jones |
| Program | Bill Hagerty |
| Projects | Bill Hagerty |
| Publications | Mark A. Nye |
| Publicity | Cynthia A. Arent |
| Study Group Advisor | Marybelle Teters |
| 2000 Convention | Mark A. Nye |
| 2000 Auction | Squeek and Dorothy Rieker, Tom and Noreen Kullman, Lynn Welker |
| 2000 Glass Show | Mary Beth Hackett, Joy McFadden |
| 2000 Glass Dash | Bud Walker |
| <i>Crystal Ball</i> Editor | Lorraine Weinman |
| <i>Crystal Ball</i> Circulation Directors | Lisa and Mike Neilson |
| WebMaster | Linda Roberts |

Internet website: www.cambridgeglass.org

DUE TO FLOODING IN CAMBRIDGE, OHIO, THE NATIONAL CAMBRIDGE COLLECTORS' MUSEUM OF CAMBRIDGE GLASS AT 9931 EAST PIKE ROAD WILL NOT BE OPEN.

THE TEMPORARY NCC MUSEUM IS LOCATED IN PENNY COURT MALL IN DOWNTOWN CAMBRIDGE, OHIO.

ADVERTISING RATES

Display Rates (camera ready ads preferred)

| Unit | Members | Non-Members |
|-----------|---------|-------------|
| Full Page | \$45.00 | \$60.00 |
| 3/4 Page | \$35.00 | \$50.00 |
| 1/2 Page | \$25.00 | \$35.00 |
| 1/4 Page | \$15.00 | \$25.00 |
| 1/8 Page | \$10.00 | \$15.00 |

(\$5.00 additional if a photograph is included in display ad)

Classified Rates

10 cents a word \$2.00 minimum

Abbreviations and initials count as words. Type sizes cannot be mixed in classified ads. **Payment in full must accompany all ad copy.** Contact Editor for copy assistance

Dealer Directory

Six Line Maximum \$24.00 for 12 month contract

Also included - Listing on our Internet site at:

www.cambridgeglass.org

Cambridge *Crystal Ball* assumes no responsibility for items advertised and will not be responsible for errors in price, description, or other information.

Advertising copy, letters, articles, must be received by the 5th of preceding month to be considered for publication in the next issue.

Please address all correspondence (include SASE) to:
(or E-Mail NCC_Crystal_Ball@compuserve.com)

National Cambridge Collectors, Inc.

P.O. Box 416

Cambridge, OH 43725-0416

| | |
|---------------------------|---|
| President Tarzan Deel | 540-869-3949 |
| Vice President Rick Jones | 914-631-1656 |
| Secretary Sharon Miller | 740-685-6513 |
| Membership | email: jaross@cambridgeoh.com |
| NCC Museum: Phone | 740-432-4245 |
| Fax | 740-439-9223 |

Please notify us immediately of any address change.

Opinions or information stated in any signed article or letter printed in the *Crystal Ball* are those of the author and may not agree with National Cambridge Collectors, Inc. The Editor reserves the right to refuse and to edit any material submitted for publication to conform to the editorial style of the *Crystal Ball*. Members are encouraged to write to NCC and the *Crystal Ball* sharing their knowledge and questions!

President's Message

Convention Time is Almost Here

As I write this, it is still February and the auction and quarterly meeting have not been held as yet. There isn't much to inform you about as we haven't met this year as a board, which happens before the quarterly meeting. I can say that the election committee has been working hard at putting together a slate for this year's board of directors elections.

Not much has happened with the museum effort as more is to happen at the March quarterly meeting. I do know people have been busy putting ideas together and I have been looking forward to hearing about the latest information.

June and the convention is not too far away. Mark will no doubt have some more information on the convention events in the coming issues.

You should have the latest order form for the red Scotty Dog bookends by now ... have you ordered yours yet?

I hope everyone is making an effort at signing up a new member this year. I believe that anyone can benefit from joining a group like ours and we can certainly learn from new people too.

I will have more to pass along in April.

Tarzan

“CAPRICE” Program by the Miami Valley Study Group

Date: May 9, 2000

Time: 6:00 p.m.

Location: Huber Heights Public Library
6160 Chambersburg Road
Huber Heights, Ohio 45424

(In the Huber Center shopping center just south of I-70 at the approximate intersection of Chambersburg Road and Route 201 which is Brandt Pike)

The Miami Valley Study Group has made special arrangements at the library for our May 9 meeting. David Ray will be leading a program on “Caprice” and our goal is to have an example of every known piece of Caprice on display. The meeting will begin at 6:00 p.m.

We cordially invite any member or interested person to attend. There will be at least 200 pieces of Caprice on display on May 9, and it is only for one evening! We are excited about this presentation and hope to have many guests.

The Cambridge Swans

Part VI - Mold Orders

by Les Hansen

Following publication of the first several articles of this series, Willard Kolb provided me with photocopies of mold orders from original records of the Cambridge Glass Company. They offer very useful information on the approximate time of introduction of the swans and, especially, of the supplemental pieces for the swans. Therefore, this final article on the Cambridge swans will fill some gaps regarding production periods that were missing in Part I and Part IV of the series.

Mold Orders Affecting Swans

| Date | Order No. | Item Number & Description | Item Appearance |
|----------|-----------|-----------------------------------|----------------------|
| 1-12-28 | 3333 | 1040 Very small swan (3") | Fall 1928 catalog |
| 1-12-28 | 3334 | 1041 Small swan (4½") | Fall 1928 catalog |
| 1-12-28 | 3335 | 1042 Small medium swan (6½") | Fall 1928 catalog |
| 1-12-28 | 3336 | 1043 Medium large swan (8½") | Fall 1928 catalog |
| 1-12-28 | 3337 | 1044 Large swan (10") | Fall 1928 catalog |
| 1-12-28 | 3338 | 1045 Extra large swan (13") | Fall 1928 catalog |
| 1-14-28 | 3339 | 1050 Candlestick insert (for 4½") | Fall 1928 catalog |
| 3-30-28 | 3416 | 1047 Cover for 6½" swan | Perhaps not produced |
| 3-30-28 | 3417 | 1048 Cover for 8½" swan | Unknown |
| 7-19-28 | 3477 | 1051 Oval liner for 8½" swan | Perhaps not produced |
| 9-24-28 | 3515 | 1052 Oval liner for 10" swan | Fall 1928 catalog |
| 5-28-30 | 3853 | 1221 Large swan or aquarium | Production delayed? |
| 10-20-30 | 3918 | 1221 Swan aquarium | Production delayed? |
| 1935 | 71 | 1221 Swan punch bowl | CL#41 (1937) |
| 1935 | 72 | 1221 Swan punch cup | CL#41 (1937) |
| 1-05-37 | 5205 | 1492 Alter 1048 (8½" cover) | CL#31 (1-6-1937) |

Nothing new is gleaned from the first seven mold orders that are listed. Molds ordered during January 1928 were in production by fall 1928. The two mold orders during March 1928 were for covers (#1047 and #1048) for the 6½" and 8½" swans. Notations on the mold orders indicate that the 6½" swan with cover was to be used as a ½-pound candy box and the 8½" swan with cover was to be used as a 1-pound candy box. Because these covers were ordered in March 1928, the molds for the covers could have been made in time for these items to be included in the fall 1928 catalog; however, they were not in that catalog. Obviously, the cover for the 8½" swan is the cover described in Part IV of this series of articles that had feather detail to match the Type 1 swan it covered. This cover doesn't have a knob of any sort, and only a couple of these have been reported to date – both in light emerald. As far as I know, a cover for a 6½" swan has not been reported to date; therefore, the mold for this cover may have never been made. However, a cover (with feather detail) for a 6½" swan could surface in the future, because Cambridge glass items previously unknown to exist appear with regularity.

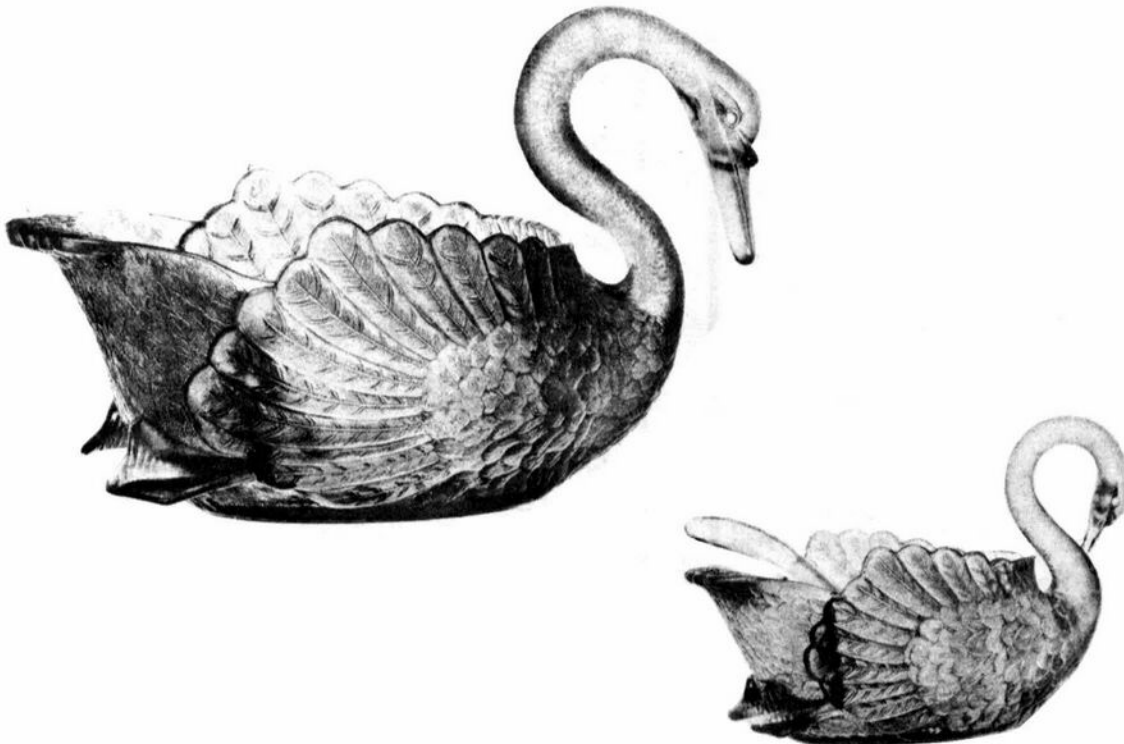
During July and September of 1928, molds were ordered for oval liners for the 8½" (#1051) and 10" (#1052) swans. The mold order for the 8½" swan liner indicated that the liner was to be used as a "fern dish;" however, the mold order for the 10" swan liner (a flowerpot) had a notation to "make this size [10"] first" and also to "get castings for the 1051 [8½"]– but do not start." I am unaware of the existence of an oval liner for an 8½" swan; therefore, the notation on the mold order for the 10" swan liner might suggest that the mold for the 8½" swan liner might have never been made. Interestingly, the mold for the 10" swan liner was not ordered until September 24, 1928; yet, this liner was illustrated in the fall 1928 catalog. Either the mold was quickly made or, more than likely, the catalog illustration was developed without using an actual liner.

Mold orders were issued three times for the #1221 swan punch bowl. The first two mold orders were during May and October of 1930, and the third one dates to sometime in 1935. As far as I know, the first reference to the swan punch bowl

being offered for sale is in Circular Letter #41 of the Cambridge Glass Factory from 1937 that was reproduced in issue #192 of the *Crystal Ball*. The latter two mold orders do not appear to be orders to alter an existing mold, so perhaps the making of a mold for the swan punch bowl was held up for some reason on two occasions. Certainly, the extreme size of the punch bowl suggests that the mold would have been a very difficult one to make. The initial mold order (5-28-30) had a notation to "leave out a great deal of feather detail." Even though the mold for the swan punch bowl probably wasn't completed until sometime in 1935 or later, this notation fits with earlier conjecture that the swan punch bowl was made in only Type 2 (some feather detail) and Type 3 (no feather detail).

Occasionally, Cambridge glass collectors hear that the 16" swan punch bowl was originally introduced as a fish bowl or aquarium. This has always surprised me, because the swan punch bowl would, practically speaking, make a lousy aquarium. The glass is extremely thick on the outside body walls of this swan, so light is heavily refracted when passing through the swan from any angle. Certainly, a swimming fish would be difficult to detect from a side view of a swan punch bowl filled with water. The two early mold orders could explain the basis of the aquarium theory. The original concept (in 1930) for the swan punch bowl might have been that it was to be used as an aquarium. However, by the time the mold for this big bird was ordered for the final time (in 1935) or was completed (sometime between 1935 and 1937), the intended use for this swan probably was only as a punch bowl. Circular Letter #41 from 1937 states only that this item is a punch bowl. Furthermore, the first and only mold order for a swan punch cup was in 1935, at the same time as the last mold order for the swan punch bowl. Perhaps reference materials from 1935 to 1937 will surface in the future and help to clarify whether Cambridge ever marketed the 16" swan as an aquarium.

The last entry in the mold order list for swans is for the #1492 cover for the 8½" swan, which was a reworking of the #1048 cover for the 8½" swan. A notation on the mold order indicates, "Make cover plain and put rose knob on it." This mold order was dated January 5, 1937, and it had an immediate impact at the factory, because Circular Letter #31 was issued to sales agents on the very next day (January 6, 1937). It stated that "we have changed the design [to Type 2, with most feather detail removed] of the swan [8½"] and have made a cover for it [the #1492 without feather detail and with a rose knob]". Whether this announcement was made to gauge demand before the mold was actually altered, or if the mold was quickly altered and put into production shortly after January 5, 1937 is unknown. The altered cover with a rose knob for the 8½" swan was made in crystal and moonlight (probably for a very short period of time) and is highly prized by swan collectors today.



2000 NCC Convention

by Mark Nye, Convention Chairman

A tentative Convention event schedule is published on page 7. The banquet speaker will be Gay LeCleire Taylor, curator of the Museum of American Glass at Wheaton Village. In addition to the banquet speaker, at least two programs are planned: one dealing with the evolution of Cambridge Glass designs through its 50 plus years of operation, and the other will be buying glass, 21st Century Style. The banquet speaker will be Gay LeCleire Taylor, curator of the Museum of American Glass at Wheaton Village.

Motel information is also published on page 8. There are no rate increases this year. You must specify you are attending the Cambridge Glass Convention to get the stated rates. Please make your reservations as soon as possible. The Amerihost now provides an iron, ironing board, and hairdryer in each room at no extra charge. Their rate includes a continental breakfast while the Holiday Inn rate includes a full breakfast. There is a new motel this year, the Comfort Inn. It is in the same area as the Budget Host Deer Creek Motel. Again, you must specify you are attending the Cambridge Glass Convention to obtain the stated rate.

As explained in the February issue, the Convention registration form will appear in the May issue. More convention information will appear in the April issue.

Cambridge or Bust June 2000 !



HILLSBORO
ALL★AMERICAN
7th annual
GLASS SHOW & SALE
Featuring American
glassware ★★ pottery
and ★ dinnerware

March **Washington**
25 & 26, 2000 **County Fairplex**
Sat. 9 am to 5 pm 874 N.E. 34th Street
Sun. 11 am to 4 pm Hillsboro, Oregon

Special Guests
Donna & Ron Miller Old Stuff **Teri Steele** The Daze
Juanita Williams Author **Robby Miller** ACDA Rep.

Glass Repair • Reference Books • Educational Display
Glass ID -- \$1.00 Donations benefit Washington Co. Library

Admission \$5.00
with flyer \$3.00

For information: Debbie (503) 640-9122
Sponsored by Pacific NW Fenton Assoc.
Member of Antique & Collectibles Show Promoter Assoc.

Tentative
2000
Calendar Planning

Mark your calendars now with these important events during the coming year:

June 21-25
2000 National Cambridge Collectors' Convention
Pritchard Laughlin Civic Center
Cambridge, Ohio

June 23-25
NCC Glass Show and Sale
Pritchard Laughlin Civic Center
Cambridge, Ohio

June 24
"Glass Dash" ("flea" market)
Beech Grove Family Development Center
Cambridge, Ohio

June 25
NCC Annual Meeting
Pritchard Laughlin Civic Center
Cambridge, Ohio

August 26
August Quarterly Meeting
Theo's Restaurant/Coney Island (tentative)
Cambridge, Ohio

**NATIONAL CAMBRIDGE COLLECTORS, INC.
27th ANNUAL CONVENTION - JUNE 2000
TENTATIVE EVENT SCHEDULE**

WEDNESDAY, JUNE 21

6:00 p.m. Dutch Treat Dinner Site to be announced

THURSDAY, JUNE 22

9:00 a.m. Registration Desk Opens Pritchard Laughlin Civic Center
 10:00 a.m. Smith Auction (Not sponsored by NCC) Pritchard Laughlin Civic Center Galleria
 4:00 p.m. Orientation Session - First Timers Conference Room - Pritchard Laughlin Civic Center
 7:00 p.m. Get Acquainted Picnic (full picnic meal served) Cash Bar Pool Side - Best Western Motel

FRIDAY, JUNE 23

8:00 a.m. Continental Breakfast Pool Side Best Western Motel
 8:30 a.m. Local Glass Factory Tours Boyd and Mosser Factories
 9:00 a.m. Registration Desk Opens Pritchard Laughlin Civic Center
 1:00 p.m. Program - Evolution of Cambridge Glass Conference Room - Pritchard Laughlin Civic Center
 4:30 p.m. Glass Show Opens Exhibit Hall - Pritchard Laughlin Civic Center
 7:30 p.m. Convention Chairman's Reception - Cash Bar Galleria - Pritchard Laughlin Civic Center
 8:00 p.m. Friday Night Supper Galleria - Pritchard Laughlin Civic Center
 9:00 p.m. Mini-Auction Galleria - Pritchard Laughlin Civic Center
 TF Pool Side Party (BYOB) Budget Host Deer Creek Motel

SATURDAY, JUNE 24

7:00 a.m. Glass Dash Opens Beech Grove Family Development Center
 11:00 a.m. Glass Show Opens Exhibit Hall - Pritchard Laughlin Civic Center
 1:00 p.m. Buying Glass-21st Century Style Conference Room - Pritchard Laughlin Civic Center
 3:00 p.m. Glass Identification - Lynn Welker Conference Room - Pritchard Laughlin Civic Center
 4:00 p.m. Bring & Brag - Lynn Welker Conference Room - Pritchard Laughlin Civic Center
 6:30 p.m. President's Reception - Cash Bar Galleria - Pritchard Laughlin Civic Center
 7:00 p.m. Annual Banquet Galleria - Pritchard Laughlin Civic Center
 TF Speaker Theater - Pritchard Laughlin Civic Center
 TF Pool Side Party (BYOB) Budget Host Deer Creek Motel

SUNDAY, JUNE 25

8:30 a.m. Buffet Breakfast Galleria - Pritchard Laughlin Civic Center
 9:30 a.m. 27th Annual Meeting NCC, Inc. Galleria - Pritchard Laughlin Civic Center
 11:00 a.m. Glass Show Opens Exhibit Hall - Pritchard Laughlin Civic Center
 1:30 p.m. Cambridge Glass Co. Workers Reunion Pritchard Laughlin Civic Center

2000 NCC CONVENTION MOTEL INFORMATION

The following motels are all located in Cambridge at Exit 178, Ohio Route 209, off of Interstate 70:

AMERIHOST CAMBRIDGE

State Route 209 South
740-439-1505
Reservations 800-434-5800
\$62 single or double (includes continental breakfast)

BEST WESTERN CAMBRIDGE

1945 Southgate Parkway
740-439-3581
No extra for children
One week cancellation notice
Approximately 50 rooms available
\$55 single or double

BUDGET HOST DEER CREEK MOTEL

2325 Southgate Parkway
740-432-6391
Reservations 800-637-2917
24 hours cancellation notice
Approximately 50 rooms available
\$45.95 single / \$52.95 double

COMFORT INN

2327 Southgate Parkway
740-435-3200
\$55 single or double

DAYS INN CAMBRIDGE

2328 Southgate Parkway
740-432-5691
\$63 (subject to availability)

HOLIDAY INN CAMBRIDGE

2248 Southgate Parkway
740-432-7313
One week cancellation notice
Approximately 20 rooms available
\$65 (includes breakfast)

TRAVELODGE OF CAMBRIDGE

State Route 209 North
740-432-7375
One week cancellation notice
Approximately 15 rooms available
Call for rates

...and west of Cambridge in nearby New Concord:

BOGART'S BED & BREAKFAST

62 West Main Street
New Concord, OH
740-826-7439 or 740-872-3514
Call for rates

To obtain the quoted rate at any of the motels, you must specify you are attending the NCC, Inc. Convention. (Most places recognize "Cambridge Glass Convention" more than they do "NCC.") It is strongly recommended that NCC members and friends attending the 2000 Convention book their reservations as soon as possible. In every instance there are only a certain number of rooms available at the stated group rate. When these are booked, you may have to pay a higher rate.

***Plan now to attend NCC Convention 2000
Make your reservations early!***

(CHEESE PRESERVERS - Continued from page 1)

It is possible Cambridge used the same mold for its 1571 jar as it used to produce jars for Dorset Foods but with the second plunger. The other possibility is that the order for Dorset Foods did not progress, for reason or reasons unknown today, beyond making the mold. However, from the surviving correspondence to the Wisconsin Cheese Mart it does appear that Cambridge planned all along to use the 0655 mold for their own use as the 1571 jar.

Both the 1570 and 1571 cheese preserver jars remained in the Cambridge line through the fall 1956. Sometime between then and 1958 production of the jars ceased.

(The following pages 10-14 contain copies of the actual correspondence mentioned in this article.)

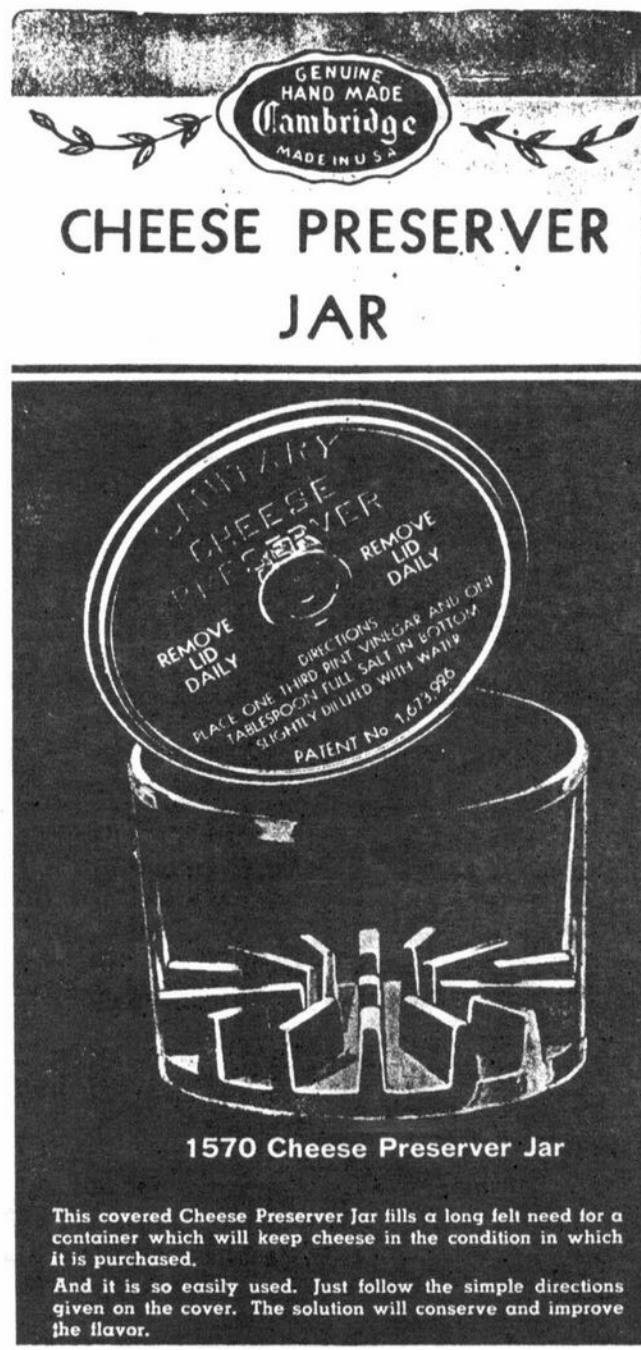
GLASS DASH

As in previous years, NCC has held an all-glass show and sale in the Beech Grove Family Center on Route 209 South. It is known as a Glass Dash, due to the fact that our dealers begin unpacking and setting up at the same time as the early-bird buyers are allowed onto the showroom floor. This creates a small, mad dash, but it is the fairest way to give everyone a chance at the rare and unusual pieces.

Early Bird admission is \$10 and the doors open at 7:00 a.m. Regular admission is \$2 and starts at 8:00 a.m. The show closes at 12:00 noon. These hours are set so that our dealers and all club members have an opportunity to attend the Glass Dash, then go back to the Pritchard Laughlin Civic Center and enjoy the Big Glass Show.

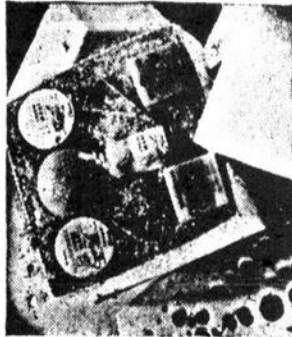
Hope to see you at the Glass Dash, Saturday, June 24, 2000.

Any questions, contact Bud Walker, 420 Heidelberg Ave., Egg Harbor, NJ 08215 or 609-965-2413 or email budw@bellatlantic.net.



The CAMBRIDGE GLASS CO.
Cambridge, Ohio

Wholesale and Retail



Gift Boxes
Our Specialty

Phone Broadway 35444

WISCONSIN CHEESE MART, Inc.

1036 North Third Street
Milwaukee, Wis.

Sept 5, 1947

The Cambridge Glass Co.
Cambridge Ohio.

Att. Mr. Anderson

Dear Sir: Please ship at once via

Freight collect

50 - C.T.N.S. - # 1570 - Cheese Preserver
Covers

~~© 1125 boxes plus carton charge~~

* Advise: do you have above in square
or in smaller or larger sizes

Very truly yours
Wisconsin Cheese
Mart Inc
A.E. Truelle

September 9th, 1942

Wisconsin Cheese Mart, Inc.
1036 N. Third Street
Milwaukee, Wis.

Gentlemen:

This will acknowledge your order dated September 5th and we are pleased to advise that we are entering your order for the 50 only #1570 Cheese Preserver & Cover, and shipment will come forward immediately.

At the present time we do not have any other Cheese Preserver than the #1570, but we are working on the mold for another cheese jar at this time and this will probably be completed within the next few weeks and as soon as completed, we will send you a sample and give you the price.

Yours truly,
THE CAMBRIDGE GLASS COMPANY

C.E. Willis/ws

cc-Anderson

October 23, 1942.

Wisconsin Cheese Mart, Inc.
1036 N. Third St.
Milwaukee, Wis.

Gentlemen:

Will you please refer to your letter of September 8th. and our reply of September 9th. We have just recently made the new cheese jar and cover, our #1571, and a sample was sent to you October 19th. The price of this jar is \$8.40 per dozen, net, plus carton charge of \$.10¢ each.

We trust you will be well pleased with this item, and that we will be favored by a nice order from you.

Very truly yours,

THE CAMBRIDGE GLASS COMPANY

C.F. Willis/ned
c.c. Anderson

Dealers in Wisconsin and Foreign Cheese
Wholesale and Retail

Other Fancy Food
Products

Cheese Jars

WISCONSIN CHEESE MART, Inc.

Phone Broadway 3544 — 1036 N. Third Street

Milwaukee, Wis.
October 24, 1942.

Cambridge Glass Company
Cambridge, Ohio

Gentlemen:

This is to acknowledge receipt of your new square cheese preserver for which we extend our thanks.

We are much pleased with the shape and construction and feel sure that it will find a ready market.

Will you please quote us prices f.o.b. your factory?

Very truly yours,

WISCONSIN CHEESE MART

A. E. Mueller

A. E. Mueller, Pres.

*quote us prices f.o.b. factory.
but did not
pay f.o.b. factory.*

Handy

CHEESE PRESERVERS.

October 27th, 1942.

Wisconsin Cheese Mart
1036 N. Third Street
Milwaukee, Wisconsin.

781
L. E. M.

Gentlemen:

Mr. A. E. Mueller, Pres.

We thank you for your letter of the 24th and are glad to know you like the new #1571 Cheese Jar & Cover, and believe it will sell.

We wrote you on the 23rd quoting a price of \$8.40 per dozen net, which price is f.o.b. Cambridge, Ohio, with regular charge for packages. The charge for individual cartons for this item is 10¢ each.

Trusting we may soon have your order, we are

Yours truly,
THE CAMBRIDGE GLASS CO.

Secretary

WCMc/CD

CC/Anderson

November Quarterly Meeting

National Cambridge Collectors, Inc.

November 6, 1999

The Quarterly Meeting of the National Cambridge Collectors, Inc. was held on November 6, 1999, at the Holiday Inn in Cambridge, Ohio, at 5:00 p.m.. A buffet dinner was enjoyed by approximately 60 members and guests. Following the dinner, president Tarzan Deel called the meeting to order. A motion was made by Bud Walker and seconded by Georgia Otten to dispense with the reading of the minutes. The motion carried.

Charles Upton gave the treasurer's report. The fund balances as of September 30, 1999, were as follows: Operating Fund - \$19,805; Museum Fund - \$36,840; Building Fund - \$165,171; Endowment - \$13,390. Charles reported that membership income is up as well as book sales revenue. The Scottie Dog project has made a profit of \$44,863.

Acquisitions: No report

Budget/Finance: Rick Jones reported that membership income is up, but *Crystal Ball* costs are also on the rise. This situation needs to be monitored closely and the possibility exists that membership dues may have to be raised in the future. The use of available technology through the website may be a creative way to communicate more cheaply and extensively to the membership.

Technology/Website: Linda Roberts reported that approximately 140 persons are looking at the website daily. A members-only site is being established and will be password protected. Linda is also establishing two chat rooms that will be password protected. These chat rooms will be available to members only and can be used as a method of discussion about the museum relocation and other pertinent topics among the membership. Linda is continuing to put new items on the members-only sector of the web. A big thank you was extended to Linda for her outstanding job with resurrecting the website.

Membership: In the absence of Jeff Ross, Sharon Miller gave the following membership report: master members - 984; associate members - 370; honorary members - 4; lifetime members - 4; grand total - 1362.

Museum Relocation: Rick Jones reviewed the five sub-committees that had been established in August to help with the relocation project. The Design sub-committee of Mike Neilson, Les Hansen, Carl Beynon, Bud Walker, and Georgia Otten met on Friday November 5, 1999, for the purpose of organization. Rick Jones, Cindy Arent, and Tarzan Deel were also in

attendance. Georgia Otten was appointed secretary of the committee. A report will be forthcoming. At this time, the committee is checking various architectural possibilities with the University of Minnesota, The Ohio State University, and the University of Cincinnati. They are also looking at interior possibilities such as storage and education sections and the display of the glass itself, which will be rotating in nature. The committee will be sending out a survey to the membership. While nothing is set in stone, the committee will remain active and aggressive in pursuing ideas and design plans. It is hoped that a more detailed report will be possible at the March meeting. Anyone is welcome to join the various sub-committees.

Facilities: No report

Interior: No report

Non-Glass: The mannequin head mold and the Buddha mold are now housed in the storage building.

Program: No report

Projects: Bill Hagerty announced that of the 688 pairs of Scottie Dog bookends made, 604 have been sold. The project has gone very well. Bill also reported that there are 75 pair of salt and pepper tops still available. Linda Roberts suggested that these be advertised on the website.

Publicity: No report

Publicity: No report

Convention: No report

Auction: Lynn Welker reported that the auction will be held the first weekend in March. Consignment glass is now being accepted. The preview will be on Friday evening, March 4, 2000, and the auction on Saturday, March 5, 2000.

Glass Show: Mary Beth Hackett and Joy McFadden have agreed to co-chair this event.

Glass Dash: Bud Walker reported that the Dash will be held at the same location as last year.

Crystal Ball: No report

(Continued on page 16)

NATIONAL STUDY GROUP REPORTS



Study Group #13 The Miami Valley (Ohio) Study Club

The February meeting of the Miami Valley (Ohio) Study Club was held at the Huber Heights Public Library. Nineteen members were present.

During the business meeting we discussed special arrangements for our May 9 meeting and program on Caprice. We also were brought up to date on the progress of the Museum Design Committee from member Georgia Otten. Some of our members have been helping Phyllis Smith prepare her glass for her auction in June, and more members are planning to help her with additional preparation in the next few months.

Our program on "Hurricane Lamps" was led by Larry Everett and included many examples that members had brought in for display and an informative handout.

Programs in future months: March 14 - "Avocado"
April 11 - "Ivy Ball Vases"
May 9 - 6:00 p.m. - "Caprice"

Show and Tell: #1299 11" footed vase, etched Rose Point; Turquoise (Blue) queen salt and pepper on two bottle castor tray; Topaz #198 perfume; #463 Amber dolphin handled 12" oval bowl; Moonlight triangular prism sign; #577 8" Horn of Plenty; club tumbler from the game set; Marigold Carnival Feather sherbet; Green Carnival Wheatsheaf cologne bottle without stopper; #636 9 1/2" candleholder, pair, very light Pink; pair of original version (discontinued before 1939) Caprice #69 candelabra with attached Shell bobeches and long prisms; #197 6 oz. oil, ground stopper Iron mold, blown, etched Marjorie (ref: Welker, Book I, p. 100).

—Submitted by Judy Rhoads, Secretary

**SEE INFORMATION ABOUT THE
MAY 9 MEETING
ON "CAPRICE"
ON PAGE 3**

INTERESTED IN JOINING A STUDY GROUP IN THE COLUMBUS, OHIO, AREA?

**CONTACT LINDA ROBERTS AT 614-337-9775 OR
EMAIL LINDA AND BRYAN AT:**

lrobert2@columbus.rr.com

(QUARTERLY MEETING - Continued from page 15)

Old Business: None

New Business: Linda Roberts announced that she is interested in establishing/co-founding a study group in the Columbus, Ohio, area. Please contact her if interested. Anna Walker announced that their study group has sponsored a 1940 catalog binder project. It is a very attractive cover and will now be sold by NCC, Inc. Anna also announced that the Harrisburg Show will be held the last weekend in April. The Cambridge Cordials announced that they will be selling another calendar for the year 2001. Charles Upton shared a copy of a new catalog containing Cambridge Art Pottery and Cambridge Universal Pottery. The price will be \$34.95 and will be available in March 2000.

There being no further business, a motion was made by Jim Finley and seconded by Charles Upton to adjourn the business portion of the meeting. The motion carried. Lynn Welker conducted a Show and Tell featuring some wonderful pieces of Cambridge.

The program for the evening was presented by Terry Whitmyer who is a member of the Candy Container Collectors of America. He shared some interesting facts about the organization and the various shapes and mediums of candy containers. It was interesting to note that candy containers date back to the 1876 Philadelphia Centennial Exposition. He noted that these containers were classified as toys or souvenirs at the time. Mr. Whitmyer gave a handout of the various candy containers manufactured by the Cambridge Glass Company. He displayed many examples of the containers and emphasized that these collectibles are becoming very difficult to find. It was a most interesting and informative program.

—Respectfully submitted by Sharon Miller, secretary



NEW

Now you can order a pair of Ruby (Red) Scotties!

The price is the same as the blue scotties.

You will have a pair (or more) of wonderful Ruby Scotties AND help with the NCC museum.

ORDER NOW!

WON'T YOU HELP?

The Ohio flood of 1998 destroyed the National Cambridge Collectors' Museum. Due to our great loss we are offering the public an opportunity to help by purchasing a special edition of Scottie Dog bookends. These Scotties will be made from the original Cambridge Glass mold in a "Ruby" (Red) color, and will be clearly marked with the N.C.C. name, date of 2000 and Mosser logo. This color will be limited to production during the year 2000. The cost will be \$100 per pair. Shipping charge is \$10 per pair. If you are an Ohio resident, you will be subject to 6 1/2% sales tax (\$6.50 per set).

THANKS!!!!

Order blank

Name: (please print) _____

Address: _____ Phone (____) _____ - _____
(UPS requires a street address) (Required if you give a P.O. Box)

City: _____ State: _____ Zip Code _____ - _____

| | | | | | | |
|--------------------------------|-------|---|----------|------|-------------------------|------------------|
| No. of pair FROSTED (Blue) | _____ | X | \$100.00 | = \$ | _____ | |
| No. of pair NON-FROSTED (Blue) | _____ | X | \$100.00 | = \$ | _____ | Check # \$ _____ |
| No. of pair NON-FROSTED (Ruby) | _____ | X | \$100.00 | = \$ | _____ | |
| Shipping - \$10.00 per pair | _____ | X | \$10.00 | = \$ | _____ | Amount \$ _____ |
| Sales tax (if Ohio Resident) | _____ | | | \$ | _____ (\$6.50 per pair) | Date _____ |
| Total of order | | | | = \$ | _____ | |

Make checks payable to: N.C.C., Inc.

Mail to: National Cambridge Collectors, Inc.
 P. O. Box 416
 Cambridge, OH 43725-0416

P.S. Those of you who are dealers and are buying the above Scotties for resale, and will not be paying the State of Ohio Tax, will have to sign a tax exempt form for such and all lines must be filled out completely to be exempt from paying the State of Ohio Sales Tax.

The undersigned hereby claims exemption to purchase of tangible personal property from the National Cambridge Collectors, Inc. on and after February 5, 1999 and certifies that this claim is based upon the purchaser's proposed use of the items purchased, the activity of the purchaser, or both as shown hereon: (Exemption Number from Rule #93.

 (Purchaser's Name)

 (Purchaser's Address)

 (Purchaser's Activity)

 (By - Signature and Title)

 (Date Signed)

 (Vendor's License Number)

~ GLASS ~ MARKETPLACE

Classifieds

FOR SALE: Assorted Cambridge Crystal and Candelabra, big footed bowls, plates, vases, candy dishes. **Helen Lenhart, 1531 Zener St., Pocatello, ID 83201.** Phone **208-237-0639.**

Have you visited our website lately?



Come see the changes!

There's often something new...

<http://www.cambridgeglass.org>

Bogart's Bed & Breakfast

62 W. Main Street, New Concord
New Concord lodging in 1830 Federal
Style home, decorated with
antiques throughout.



Bogart's Antiques

7527 E. Pike, Norwich, OH
Quality Antiques Bought & Sold

OWNERS: Jack & Sharon Bogart

740-826-7439 or 740-872-3514

www.bedandbreakfastohio.com Reservations by phone

WE CLEAN CLOUDY GLASS! SATISFACTION GUARANTEED

Yes, it is true that we really can restore the interior of your cruet, vase, decanter and other internally etched items back to near original condition.

We do not oil, wax or cover up the sickness in any way! We actually remove it.

No items are too sick to clean! If we cannot clean an item to meet your satisfaction, the cleaning is FREE!

Send no money up front. When we return your item a bill will be enclosed for the postage and cleaning. If you are not satisfied, only the return postage is requested.

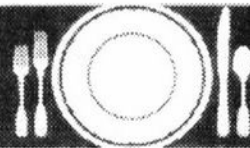
Most items clean in 7-8 weeks. All glass is handled and cleaned at your risk. Some very cloudy items may take several additional weeks.

| | | | |
|-----------------|--------------|-------------------|--------------|
| Cocktail Shaker | \$35-\$40.00 | Salt Shaker (1) | \$25.00 |
| Cologne | \$27.50 | Salt Shaker (2) | \$42.50 |
| Cruet | \$27.50 | Vases (under 10") | \$30-\$35.00 |
| Decanter | \$35-\$45.00 | Vinegar & Oil | \$30.00 |
| Lavendar Jar | \$25-\$35.00 | Water Bottle | \$35-\$40.00 |

Ship to: Kim Carlisle & Associates
28220 Lamong Road, Dept. C
Sheridan, IN 46069
(317) 758-5767

kcarlis@indy.net

2000



Stems Without Thorns

As the world's largest supplier of old & new china, crystal, silver and collectibles, Replacements, Ltd. has more than 700 different patterns of Cambridge crystal.

And however much we enjoy selling pieces that were once thought irreplaceable, we love buying them as well. Thanks to people like you, our crystal inventory currently numbers in the hundreds of thousands, and the numbers keep growing every year.

So, if you've been unsuccessfully searching for that elusive piece of Cambridge — or any other type of fine crystal — call us for a free list of pieces available in your pattern. And, if you're looking to sell pieces you currently have, we can help you there, too.

REPLACEMENTS, LTD.

China, Crystal & Silver • Old & New

1-800-REPLACE
(1-800-737-5223)

1089 Knox Road,
PO Box 26029, Dept. CB,
Greensboro, NC 27420
www.replacements.com

DEALERS



DIRECTORY

NOTE: When writing to the dealers listed here, please enclose a SASE!

| | | |
|--|---|--|
| <p>DAUGHERTY'S ANTIQUES Jerry and Shirley</p> <p>Antiques and Collectibles * Mostly Glass</p> <p>Shows & Mail Orders 2515 Cheshire No. 402-423-7426 Evenings Lincoln NE 68512</p> | <p>YOU CAN ADVERTISE YOUR ANTIQUE SHOP HERE!</p> | <p>THE JONES GROUP Cindy Jones</p> <p>Buy and Sell Cambridge Glass 650 Riverside Drive Sleepy Hollow, NY 10591 914-631-1656 or E-Mail Caprice0@aol.com</p> |
| <p>Milbra's Crystal Buy & Sell Replacement and Matching Specializing in: Cambridge Milbra Long (817) 645-6066 Fostoria Emily Seate (817) 294-9837 Heisey PO Box 784, Cleburne, TX 76033 and others E-mail: longseat@flash.net</p> | <p>CRYSTALLINE COLORS Buy, Sell, and Appreciate Cambridge and Other Elegant Glass I Love Cambridge</p> <p>Lynne R. Franks 216-661-7382 Ohio & Western PA Antique Malls</p> | <p>Mary Jane's Antiques Mary Jane Humes 2653 Burgener Dr., Decatur, IL 62521 Glass: Cambridge, Fostoria, New Martinsville, Duncan Miller, Imperial and Early Pressed mjhumes@aol.com 217-422-5453</p> |
| <p>THE GLASS URN 456 West Main Street, Suite G Mesa, AZ 85201 602-833-2702</p> <p>Mail Order Shows Open Shop</p> <p>CAMBRIDGE, FOSTORIA, HEISEY, ETC.</p> | <p>YOU CAN ADVERTISE YOUR ANTIQUE SHOP HERE!</p> | <p>GATEWAY ANTIQUE MALL, INC. JUST NW OF MINNEAPOLIS-ST. PAUL, MN Next to Super 8 in Rogers, MN (I-94/101 Intersection)</p> <p>85 Dealers 7 Days, 10-6 612-428-8286 ELAINE STORCK, OWNER/DIRECTOR</p> |
| <p>THE DEGENHART PAPERWEIGHT AND GLASS MUSEUM, INC.</p> <p>P O Box 186 Cambridge, Ohio 43725-0186 Intersection of US 22 & I 77 Phone 740-432-2626</p> | <p>D & D ANTIQUES Columbus, Ohio</p> <p>Dick Sifko SHOWS ONLY</p> | <p>JAMESTOWN ANTIQUES 16 E. Washington St., Jamestown, OH 45335 Rosepoint and Cambridge our Specialty</p> <p>Buy (937) 675-6491 Sell Susan and Larry Everett</p> |
| <p>THE GLASS CUPBOARD P O Box 652 West End, North Carolina 27376</p> <p>Marcia Ellie 910-673-2884 Cambridge Show or winter 941-379-3302 and Mail Order</p> | <p>JUDY'S ANTIQUES Judy Bennett 422 S. Ninth Street (Corner of Jefferson) Cambridge, Ohio 43725 Bus 740-432-5855 Res 740-432-3045</p> <p>CAMBRIDGE GLASS MY SPECIALTY</p> | <p>Horse'n Around Antiques Kelvin and Heather Moore Exit 69 on Interstate 64 Woodlawn, IL 62898 e-mail hmoore@midwest.net TEL: 618-735-9114</p> <p>Specializing in Cambridge and other Elegant Glass</p> |
| <p>FINDER'S ANTIQUE HOUSE 3769 Highway 29 North Danville, VA 24540 (804) 836-6782 Cambridge-Heisey-Duncan-Fostoria</p> | <p>GREEN ACRES FARM 2678 Hazelton Etna Rd., Pataskala, OH 43062 (State Route 310 North)</p> <p>Sat & Sun 1-7 PM 740-927-1882 Antiques, Crystal Glass and Collectibles</p> | <p>CRYSTAL LADY 1817 Vinton St., Omaha, NE 68108</p> <p>Bill, Joann, and Marcie Hagerty Bus 402-341-0643 Res 402-391-6730 Specializing in Elegant Glass & Collectibles</p> |
| <p>YOU CAN ADVERTISE YOUR ANTIQUE SHOP HERE!</p> | <p>YOU CAN ADVERTISE YOUR ANTIQUE SHOP HERE!</p> | <p>PENNY COURT MALL 637 Wheeling Avenue Cambridge, Ohio 100 Booths 15,000 sq ft HOURS: Daily 10-6 Sunday Noon-5 Closed: Easter, Thanksgiving, Christmas Call for Other Holiday Hours 740-432-4369</p> |
| <p>MICHAEL KRUMME Cambridge and other elegant glassware</p> <p>(323) 857-0140 e-mail mkrumme@pacbell.net website http://www.glassshow.com PO Box 48225 Los Angeles CA 90048-0225 Send your want list</p> | <p>Warren and Mary Welsh Cambridge & Other Elegant Glassware</p> <p>3635 Saddle Rock Rd., Colorado Springs, CO 80918 (719) 531-5866 WELS@EARTHLINK.NET</p> <p>MAIL ORDER SHOWS</p> | <p>MARGARET LANE ANTIQUES 2 E. Main St., New Concord, OH 43762 Lynn Welker 740-826-7414</p> <p>Cambridge Glass Matching Service Hours Mon-Fri 10-12 AM, 1-5 PM or by Appointment</p> |
| <p>ISAACS ANTIQUES (740) 826-4015</p> <p>See our booths in Penny Court Mall in Cambridge and White Pillars Antique Mall at Rt. 40, one mile west of I-70 Norwich Exit #164</p> | <p>ALADDIN LAMP BOOKS Free List Figurine Lamps Wanted Bill & Treva Courter</p> <p>3935 Kelley Rd. Kevil, KY 42053 Phone/FAX 502-488-2116</p> | <p>DEXTER CITY ANTIQUE MALL P. O. Box 70, Dexter City, Ohio 45727 (740) 783-5921</p> <p>Located on Ohio St. Rt. 821 Between Exits 16 & 25 off I-77 Just 30 min. South of Cambridge, Ohio</p> |



**Have you ordered your
Ruby (Red) Scotties
yet?
(see page 17)**

Recent Finds

Looking for recent "finds."

Have you found something recently that you would like to share the fun and excitement of with other members??

We would love to see!! Please send photos...or even just tell us about it!

**CHECK OUT NCC'S
REASONABLE
ADVERTISING RATES...**

*You never know who or what
you are missing!*

(see page 2 for details)

National Cambridge Collectors Inc
PO Box 416
Cambridge OH 43725-0416
<http://www.cambridgeglass.org>
e-mail: NCC_Crystal_Ball@compuserve.com

FIRST CLASS MAIL
U.S. POSTAGE
PAID
PERMIT NO. 1
CAMBRIDGE, OH

FIRST CLASS MAIL

Membership Renewal Notice

**If the date on your address label is 3-2000,
this is your LAST ISSUE of the Crystal Ball.**
Please take a moment and renew now. Thank you!