

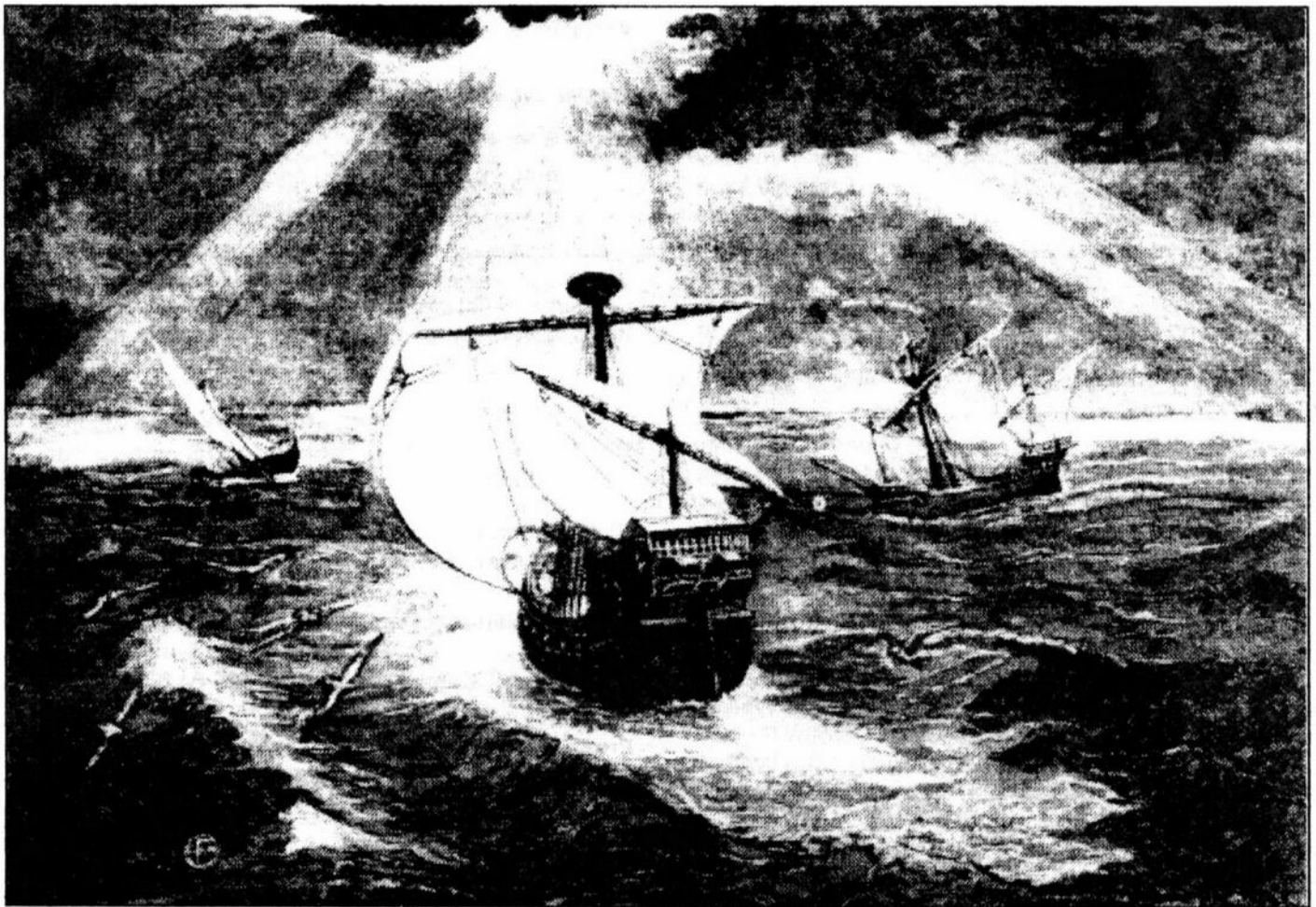


# Cambridge Crystal Ball

Published monthly by National Cambridge Collectors, Inc.  
to encourage and report the discovery of the elegant and boundless product of the  
Cambridge Glass Company of Cambridge, Ohio

Issue No. 307

November 1998



### *Inside This Issue:*

Thank You, Lynn Welker!!!  
Nautilus  
August Quarterly Meeting Minutes  
Project Update Report  
November, Harrisburg, and Thanksgiving  
Tips on Keeping a Collection Under Control

# *Nautilus*

(See pages 4 - 9)

## Cambridge Crystal Ball

Official publication of National Cambridge Collectors Inc., a non-profit corporation with tax exempt status. Published once a month for the benefit of its members. All rights reserved; reproduction in whole or in part without written permission of NCC and the author is prohibited.

Membership is available for individual members at \$17.00 per year and an additional \$3.00 for associate members (12 years of age and older, residing in the same household). Of the master member dues, \$12.00 is credited to a one-year subscription to the *Crystal Ball*. All members have voting rights, but only one *Crystal Ball* per household. **Multi-year memberships are available: 2 years for \$33.00, 3 years for \$49.00.**

### 1997-1998

#### OFFICERS AND COMMITTEE CHAIRPERSONS

President .....	Richard D. Jones
Vice President .....	Tarzan Deel
Secretary .....	Lynne Verbsky
Treasurer .....	Charles Upton
Sergeant-at-Arms .....	Tarzan Deel
Acquisitions .....	Kelvin Moore
Budget & Finance .....	Dennis Snyder
By-Laws .....	Bud Walker
Corresponding Secretary .....	Charles Upton
Technology .....	Tarzan Deel
Membership .....	Jeff Ross
Museum Expansion/Relocation .....	Willard Kolb
Museum Facilities .....	Carl Beynon, Joe Miller
Museum Interior .....	J.D. Hanes, Marybelle Teters
Non-Glass Items .....	Tarzan Deel
Nominating .....	Joy McFadden
Program .....	Bill Hagerty
Projects .....	Bill Hagerty
Publications .....	Mark A. Nye
Publicity .....	Cynthia A. Arent
Study Group Advisor .....	Marybelle Teters
1999 Convention .....	Mark A. Nye, Bud Walker
1999 Auction .....	Squeek and Dorothy Rieker, Tom and Noreen Kullman, Lynn Welker
1999 Glass Show .....	Mary Beth Hackett, Joy McFadden
1999 Glass Dash .....	Bud Walker
<i>Crystal Ball</i> Editor .....	Lorraine Weinman
<i>Crystal Ball</i> Circulation Directors .....	Lisa and Mike Neilson
WebMaster .....	Don Stevens

Internet website: [www.cambridgeglass.org](http://www.cambridgeglass.org)

**DUE TO THE RECENT FLOODING IN CAMBRIDGE, OHIO, THE NATIONAL CAMBRIDGE COLLECTORS' MUSEUM OF CAMBRIDGE GLASS AT 9931 EAST PIKE ROAD WILL NOT BE OPEN UNTIL FURTHER NOTICE.**

## ADVERTISING RATES

### Display Rates (camera ready ads preferred)

Unit	Members	Non-Members
Full Page	\$45.00	\$60.00
3/4 Page	\$35.00	\$50.00
1/2 Page	\$25.00	\$35.00
1/4 Page	\$15.00	\$25.00
1/8 Page	\$10.00	\$15.00

(\$5.00 additional if a photograph is included in display ad)

### Classified Rates

10 cents a word \$2.00 minimum

Abbreviations and initials count as words. Type sizes cannot be mixed in classified ads. **Payment in full must accompany all ad copy.** Contact Editor for copy assistance.

### Dealer Directory

Six Line Maximum \$24.00 for 12 month contract

Also included - Listing on our Internet site at:

[www.cambridgeglass.org](http://www.cambridgeglass.org)

Cambridge *Crystal Ball* assumes no responsibility for items advertised and will not be responsible for errors in price, description, or other information.

**Advertising copy, letters, articles, must be received by the 5th of preceding month to be considered for publication in the next issue.**

Please address all correspondence (include SASE) to:  
(or E-Mail [NCC\\_Crystal\\_Ball@compuserve.com](mailto:NCC_Crystal_Ball@compuserve.com))

### National Cambridge Collectors, Inc.

P.O. Box 416

Cambridge, OH 43725-0416

President Rick Jones	914-631-1656 or E-Mail <a href="mailto:Caprice0@aol.com">Caprice0@aol.com</a>
Vice President Tarzan Deel	540-869-3949
Secretary Lynne Verbsky	216-661-7382
NCC Museum: Phone	740-432-4245
Fax	740-439-9223

**Please notify us immediately of any address change.**

Opinions or information stated in any signed article or letter printed in the *Crystal Ball* are those of the author and may not agree with National Cambridge Collectors, Inc. The Editor reserves the right to refuse and to edit any material submitted for publication to conform to the editorial style of the *Crystal Ball*. Members are encouraged to write to NCC and the *Crystal Ball* sharing their knowledge and questions!

## President's Message



# *Thank You, Lynn Welker !!!*

Ever since I joined this club in 1987, one of my favorite days of the year has been the first Saturday in March. That is the date of the annual benefit auction of Cambridge Glass. For as long as I've been a member, and for many years before that, this event has been chaired by Lynn Welker.

But now, for 1999's event, Lynn is relinquishing his position as chairperson of our annual auction. Where do I start to describe the enormity of the contributions that Lynn Welker has made to this event?

Lynn has been talking for a few years now about his desire to relieve his workload. An enormous amount of work goes into coordinating this event and it can consume much of his time in the fall and winter. Lynn has a business to run, a family he wishes to spend time with, and believe it or not, a need to actually take some "personal" time to enjoy life! Few people in our club deserve that more than Lynn. His contributions to NCC have been vast.

For those who are new to the club or may not understand the importance of this auction to NCC, let's give a little insight.

The first Saturday in March every year, NCC stages an auction of Cambridge Glass. This event has been conducted continuously for, I believe, 20 years. The event has many goals, but the two most notable are to provide a benefit to members and to raise money for our Museum Fund.

The people who consign glass to the Auction agree to provide a 20% consignment fee. (Most auctions work on a 10% commission.) That fee goes entirely to NCC. After expenses, this event usually raises \$6-7,000 for the NCC Museum. The Auction and our Mini-Auction at the June Convention are probably our two biggest fundraisers that have permitted us to operate a fine Museum of Cambridge Glass.

This year, our needs are even more acute as we look to build the treasury so we may construct a new and even better club museum.

This year for the first time, in who knows when, you'll see new names on page 2 next to Auction Committee.

We are very lucky that Squeek and Dorothy Rieker of Columbus, Ohio, have agreed to take on the primary coordinating task. It was with great trepidation that they agreed to this; they knew they were following a legend.

The 1999 Auction is an important transition year. Lynn is supplying his wealth of historical knowledge to help build a smooth transition. He also will be handling all the mail bids for the Auction, a huge job unto itself.

The average person who attends this auction may not understand all the hard work that goes into making this auction work. It's been through Lynn's diligence that the process seems smooth and seamless. The reality is that it is six to seven months of hard work that has many steps with corresponding deadlines.

In September we request consignments. These are evaluated and lots selected for auction. In October, the consignors are notified about what glass is selected and must ship that glass in November. The glass is reviewed for condition and accuracy of description. This, itself, is a huge task and we are fortunate that Tom and Noreen Kullman of Zanesville, Ohio, have agreed to help in this process by receiving and reviewing the glass.

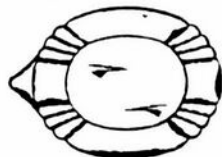
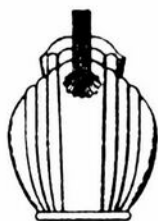
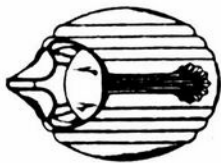
By the first week of December, the Auction catalog is developed so it may be published in the January *Crystal Ball*. Then an article is written for the February issue to highlight the auction for members.

This is an enormous amount of work and I haven't even discussed the auction and its follow-up needs! For years, Lynn Welker handled all of this with some assistance from volunteers. I know better today just how much work was involved and how lucky we have been to have Lynn quarterbacking this project.

Thanks so much from all of us, Lynn!

89,828. JUG OR SIMILAR ARTICLE. JESS CLAIR KELLY, Cambridge, Ohio. Filed Feb. 16, 1933. Serial No. 47,281. Term of patent 7 years.

89,828



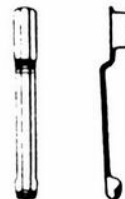
The ornamental design for a jug or similar article, substantially as shown.

89,829. PENCIL CLIP OR SIMILAR ARTICLE. JULIUS C. HOCHMAN, New York, N. Y., assignor to Eagle Pencil Company, New York, N. Y., a Corporation of Delaware. Filed Feb. 27, 1933. Serial No. 47,329. Term of patent 14 years.



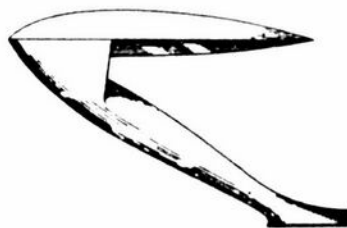
The ornamental design for a pencil clip or similar article, as shown.

89,830. PENCIL CLIP OR SIMILAR ARTICLE. ROBERT J. HILL, Cranston, R. I., assignor to Eagle Pencil Company, New York, N. Y., a Corporation of Delaware. Filed Feb. 27, 1933. Serial No. 47,336. Term of patent 14 years.



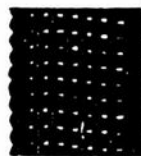
The ornamental design for a pencil clip or similar article as shown.

89,831. AUTOMOBILE RADIATOR ORNAMENT OR SIMILAR ARTICLE. THOMAS L. HIBBARD, Birmingham, Mich., assignor to Ternstedt Manufacturing Company, Detroit, Mich., a Corporation of Michigan. Filed Feb. 27, 1933. Serial No. 47,340. Term of patent 7 years.



The ornamental design for an automobile radiator ornament or similar article substantially as shown.

89,832. ELASTIC LACE BRAID. OTTO EUGENE HUBER, Reading, Pa., assignor to Narrow Fabric Company, West Reading, Pa., a Corporation of Pennsylvania. Filed Oct. 10, 1932. Serial No. 45,283. Term of patent 14 years.



The ornamental design for an elastic lace braid, shown and described.



# *Nautilus*

by Mark Nye

On February 16, 1933, Jess Clair Kelly, on behalf of the Cambridge Glass Co., filed a design patent application that read:

"Be it known that I Jess Clair Kelly, a citizen of the United States of America, and resident of Cambridge, county of Guernsey, and state of Ohio, have invented a new, original and ornamental design for a Jug or Similar Article, of which the following is a specification, reference being had to the accompanying drawing in which Figure 1 is a stop plan view of a jug or similar article showing my new design; Figure 2 is a side elevation of the same; Figure 3 is a rear view of the same; Figure 4 is a bottom view of the same. I claim: The ornamental design for a jug or similar article substantially as shown."

Mr. Kelly was issued design patent No. 89828 for the "jug or similar article." Later advertising for the line indicated it was also covered by design patent 84482 which was issued for the 3400 line ball jug.

In the interest of space the original drawings are replaced with a page from the U.S. Patent Office Official Gazette showing all four drawings in a reduced size. The originals were two to a page.

Assigned the line number 3450, the new line was named Nautilus and appeared on a supplemental catalog page issued circa early 1934. It was also the subject of a four-page pamphlet that is undated but was issued some time in the mid to late 1930s. It is reprinted here.

Both the patent application drawings and the ones printed in the Official Gazette show a reeded handle. Neither the catalog page nor the pamphlet illustrations indicate a reeded handle. Both show a plain, applied handle and the amethyst jug in my collection has the plain handle.

Crown Tuscan is not mentioned as one of the available colors. However, at the bottom of the price list page is the statement "All handles and stoppers are crystal except on Crown Tuscan." Other than the two vases, this author does not know what other Nautilus items were made in Crown Tuscan. I would be interested in hearing from collectors who may have pieces of Nautilus in Crown Tuscan.

To round out the Nautilus line, Cambridge used the wine and five flat tumblers from the 3078 stemware line. This line was introduced in 1933.

The only trade journal reference to the Nautilus line I was able to locate was in the October 1934 issue of *China, Glass and Lamps*.

A decanter and wine glass were illustrated with this caption:

"The Nautilus design is an outstanding creation. Wine sets are especially attractive because of the striking decanter and the handsome glasses. Done in Crystal, Amber, Royal Blue, Forest Green, Amethyst and Carmen and combination of Crystal and color."

The Nautilus line was discontinued sometime prior to 1940 as the catalog issued that year failed to make mention of it.

---

---

---

# *Nautilus*

---

---

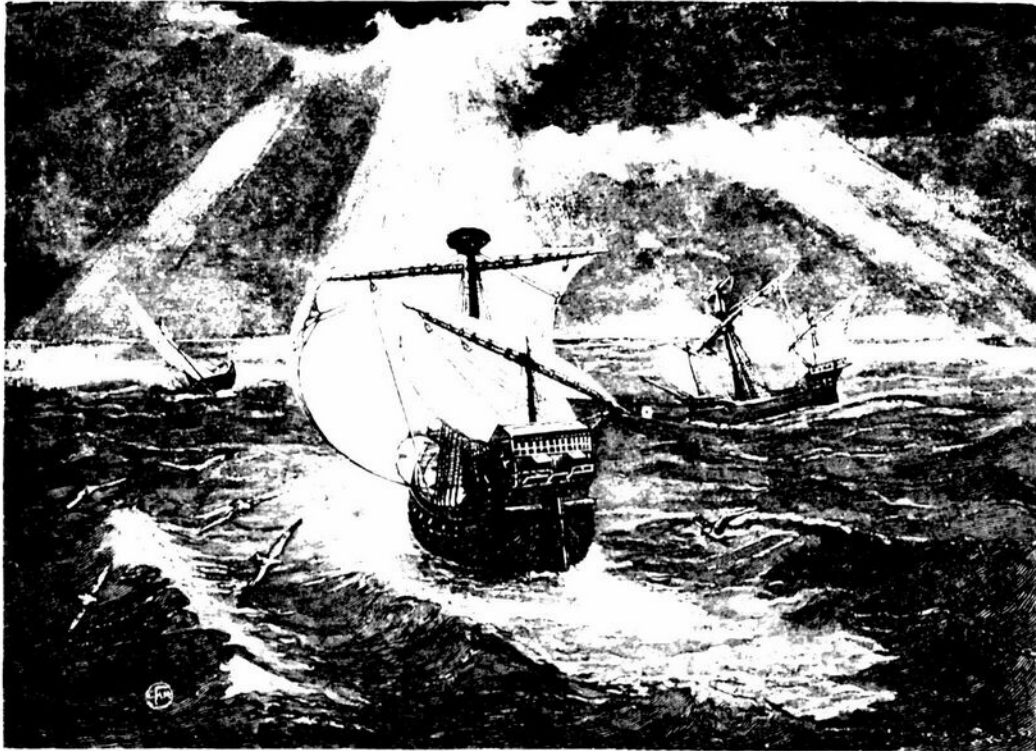
---

ONE OF THE MOST OUTSTANDING  
CREATIONS OF THE YEAR

---

---

---



---

---

---

THE CAMBRIDGE GLASS COMPANY  
CAMBRIDGE, OHIO

---

---

---



# Nautilus

PATENT 84482 and 89928



9 in. Vase



7 in. Vase



1 oz.



2 oz.



5 oz.



12 oz.



15 oz.



Oil & Vinegar Set



Salt & Pepper Set



Perfume



Cream & Sugar Set



2 1/2 oz.  
Wine



80 oz. Jug



40 oz. Decanter



28 oz. Decanter



14 oz. Decanter



# *Nautilus Design*

3 4 5 0

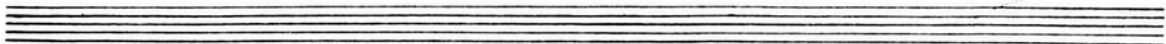
(DESIGN PATENTS 84482 and 89828)

Made in the following colors: Carmen (our Ruby), Crystal, Amber, Royal Blue, Forest Green,  
and Amethyst.

	<i>Crystal</i>		<i>Carmen</i>
	<i>Royal-blue</i>		<i>Per Doz.</i>
	<i>Forest-Green</i>		
	<i>Amber</i>		
	<i>Amethyst</i>		
	<i>Per Doz.</i>		
3450 — 84 oz. Hdl. Jug.....	\$24.75		\$49.50
3450 — 40 oz. Hdl. Wine Decanter G.S.....	24.75		49.50
3450 — 28 oz. Hdl. Whiskey Decanter G.S.....	24.75		49.50
3450 — 14 oz. Hdl. Cordial Decanter G.S.....	16.50		33.00
3450 — 2½ oz. Hdl. Oil or Vinegar G.S.....	9.90		18.50
3450 — 3-pc. Oil and Vinegar Set (2-Oils on Tray).....	26.40		43.50
3450 — Hdl. Salt and Pepper Shaker Chrom. Plated Top.....	12.40	Doz. Pr.	21.50
3450 — 3-pc. S & P Shaker Set (2-Shakers on Tray).....	17.90		27.00
3450 — Hdl. Sugar & Cream.....	20.60	Doz. Pr.	41.25
3450 — 1½ oz. Hdl. Perfume — G.S.....	9.90		19.80
3450 — 3½ in. Puff Box and Cover (Not Illustrated).....	12.40		24.75
3450 — 1 oz. Cordial Tumbler.....	2.50		4.50
3450 — 2 oz. Whiskey Tumbler.....	2.50		4.75
3450 — 5 oz. Tumbler.....	2.90		5.65
3450 — 12 oz. Tumbler.....	4.50		7.90
3450 — 15 oz. Tumbler.....	6.60		9.90
3450 — 2½ oz. Stemmed Wine — Crystal.....	4.75		..
3450 — 2½ oz. Stemmed Wine — Crystal W/A-Rb.-Ame-Fg. Foot.....	5.00		..
3450 — 2½ oz. Stemmed Wine — Crystal W. Carmen Foot.....	..		7.50
3450 — 7 in. Ftd. Vase.....	20.60		41.25
3450 — 9 in. Ftd. Vase.....	24.75		49.50
3450 — 3½ in. 2-Hdl. Vase.....	10.40		20.60
3450 — 7 pc. Water or Beverage Set — 1 Jug W 6-12 oz. Tumblers.....	51.75		96.90
3450 — 7-pc. Wine Set — 1-40 oz. Decanter W 6-2 oz. Tumblers.....	39.75		78.00
3450 — 7-pc. Wine Set — 1-40 oz. Decanter W 6-2 oz. Stemmed Wine Crystal.....	53.25		..
3450 — 7-pc. Wine Set — 1-40 oz. Decanter W 6-2 oz. Stemmed Wine Crvs Colored Foot.....	54.75		..
3450 — 7-pc. Wine Set — 1-40 oz. Decanter W 6-2 oz. Stemmed Wine Crvs Carmen Foot.....	..		91.50
3450 — 7-pc. Whiskey Set — 1-28 oz. Decanter W 6-2 oz. Tumblers.....	39.75		78.00
3450 — 7-pc. Cordial Set — 1-14 oz. Decanter W 6-1 oz. Tumblers.....	31.50		60.00

(All Handles and Stoppers are Crystal Except on Crown Tuscan)

(All Trays are Crystal)





---

---

---

QUALITY



ORIGINALITY SALABILITY

OUR service is Quality with correct designs and popular prices, and to produce glassware of distinction, which you sell readily at a profit.

THE CAMBRIDGE GLASS CO.  
CAMBRIDGE, OHIO

« « Permanent Displays and Sales Offices » »

THE CAMBRIDGE GLASS COMPANY,  
184 Fifth Avenue,  
NEW YORK, N. Y.

A. H. RENWICK,  
946 South Flower Street,  
LOS ANGELES, CALIFORNIA

THE CAMBRIDGE GLASS COMPANY,  
Room 1547 - The Merchandise Mart  
CHICAGO, ILLINOIS

JOHN A. NIXON  
924 Filbert Street, - 2nd Floor,  
PHILADELPHIA, PA.

# August Quarterly Meeting Minutes

## Coney Island Restaurant

### Cambridge, Ohio

### August 22, 1998

Before beginning the official report, I would like to give a big "Thank You!" to Mike Neilson and Cindy Arent. They made sure that all of our very important meetings were recorded on tape in my absence. I missed all of you very much and hope that I will never have to miss a meeting again. Unfortunately, once in a while, work comes before glass, although I do not personally agree with that!

A discussion took place about the glass which had been loaned to the museum by club members. It was stated that we want to make sure anyone who loaned glass that was broken during the flood is treated fairly. All large loans have now been returned.

**Publicity:** Cindy Arent reported that we will not run the ads which we normally do, such as the ad in Ohio Pass, since there is no museum. We may not be in Penny Court for a full year, so we will also not run the ad in the Guernsey County visitors' brochure.

A press kit with pictures, the *Crystal Ball* flood issue, and a cover letter, will be put together and sent out to DG clubs and shows. We will have extra flood issues to sell.

**1999 Convention:** Mark Nye was working on a theme about "It's a Small, Small World" with the idea of featuring the smaller pieces made by Cambridge. Since the flood, however, we do not know what we may do for the theme.

**1999 Auction:** Lynn Welker will be pulling out as auction chair. We are moving in replacements for Lynn's roles, and Tommy Kullman, Squeek Rieker, and Mike Neilson have been selected. An ad in the *Crystal Ball* has instructions to send auction lists, in care of the NCC, to the post office box. [EDITOR'S NOTE: The deadline was October 1, 1998.] This will be a transition year, but we will continue to operate as before. We will do our best to give tribute to all Lynn has done over the many years. Lynn stated that he will still help with absentee bids.

**1999 Glass Dash:** Bud Walker reported that the Glass Dash will be the same. It was very successful in 1998, raising over \$2,800, and Bud hopes that we can raise \$3,000 next year. The dealers were also satisfied. We expect to have more applications for dealers than we have space. A discussion followed about how to handle

this situation.

Special Applause for Lorraine: Members present at the meeting gave a special applause to Lorraine Weinman for the two fabulous flood issues which she put together.

**Old Business:** None.

**New Business:** Dennis Snyder discussed raising cash for a new museum building, furnishings, and grounds, somewhere in the range of \$250,000 to \$300,000. We may need professional fundraisers and people who know how to get grant money.

Members discussed our current location and other possible sites. We seem to be leaning somewhat toward looking for an existing structure rather than attempting to build from scratch since it is much cheaper.

Today, some of the Board members looked at a piece of property off of Interstate 77 and state Route 40. Owners are asking \$169,000 for the property which is currently for sale. There is also an adjacent piece of property, which has a storage building on it, with a lease expiring in the year 2000. For comparison, Board members had also looked at a downtown building, but the cost was prohibitive. Whatever we do, we do not want to get ourselves in a situation where we must keep up with a high overhead for upkeep and maintenance every year.

A discussion took place about asking study groups to work for a specific item when raising money. It was also stated that we must do something now, close to the time of the disaster.

We are looking for fundraising ideas. We are also looking for volunteers for two newly-formed committees. The first committee will be dedicated to investigating grant money and approaching the state. The second committee is designated to create smart, sensible fundraising projects.

Frank Wollenhaupt suggested that we publish our own book of rare Cambridge glass. Glass could be photographed by color and by etching. No one else could

*(Continued on page 11)*



# Project Update Report

## The Scottie Dog Bookend

by Bill Hagerty

At our August National Cambridge Collectors Board meeting, it was decided that if NCC could make Scottie Dog bookends and sell them as a fundraiser to acquire a different building that, say selling them for \$100 a pair X say 400 limited pairs, that would give us a start for another building. We were also approached by a nonglass club called the Wee Scots, who said they would, as a fundraiser, buy the Scotties.

At this time we have two molds at Mosser Glass that from a test run has made six Scotties. We plan to make them in a light blue color. We know they cannot be run until mid-January.

I know that everyone has questions about this project, but we can go no further until the price is set, the number is set, and many more questions are addressed.

The Board will be discussing and deciding these issues and we will let you know soon.

*(Continued from page 10)*

get the glass together as we could!

Dennis Snyder made a suggestion of raising money by selling bricks with donors' names.

A new Internet auction is starting up, with the promoters looking for 20 clubs and with each club submitting 25 pieces of glass. We would need to find out how they might use our name in the future.

President Rick Jones discussed communication efforts with regional glass clubs. Many local clubs would like to focus on Cambridge for their donations. People are concerned and they care. Rick attended a meeting of the NDGA, and he was the first officer of any major glass club who had ever done so. They want to promote education and preservation as we do.

Rick thanked everyone for all of their help, and the meeting was adjourned.

**Respectfully submitted,**  
**Lynne R. Verbsky**  
**Secretary**

### **WE CLEAN CLOUDY GLASS!** **SATISFACTION GUARANTEED**

**Yes, it is true that we really can restore the interior of your cruet, vase, decanter and other internally etched items back to near original condition!**

**We do not oil, wax or cover up the sickness in any way! We actually remove it.**

**No items are too sick to clean! If we cannot clean an item to meet your satisfaction, the cleaning is FREE!**

**Send no money up front. When we return your item a bill will be enclosed for the postage and cleaning. If you are not satisfied, only the return postage is requested.**

**Most items clean in 6-8 weeks. All glass is handled and cleaned at your risk. Some very cloudy items may take several additional weeks.**

Cruet	\$20.00	Cocktail Shaker	\$30.00
Vinegar & Oil	\$25.00	Salt Shaker (one)	\$25.00
Cologne	\$20.00	Salt Shaker (pair)	\$35.00
Decanter	\$30.00	Water Bottle	\$30.00
Vases (under 12")	\$25.00	Lavender Jar	\$20-30.00

Ship to: **Kim Carlisle & Associates**  
28220 Lamong Road, Dept. C  
Sheridan, IN 46069  
(317) 758-5767

# *November, Harrisburg, PA, and THANKSGIVING*

by John Corl

What do these three have in common?

This year, these three are very important with regard to what they have in common, especially for the members of NCC. Let me explain.

In November, specifically the weekend of November 20, 21, and 22, the members of the Elegant Glass Collectors study group will again be setting up a display of Cambridge glass at the Great Eastern Antique Show and Sale at the Farm Show building in Harrisburg, PA. This is the weekend before the Thanksgiving holiday. It seems so appropriate, for we as fellow National Cambridge Collectors club members have a lot to be thankful for this year. We can be thankful for the great group of people who worked feverishly to "rescue" as much of the glass and other items from the rising flood waters this June as was possible in the time they had before they had to flee the rising water themselves. Without their efforts, it would have been a much greater loss for the NCC Museum and its contents. We can be thankful for the countless, unselfish hours that people put in after the waters receded to gather, clean, and otherwise make sure the

glass was again safe and secure. NOW, it's OUR TURN!

With this in mind, we plan to set up a display of Cambridge glass, featuring the "Etchings" and the book of the same name. We will be a "point of contact" for information on membership and books on Cambridge glass.

Please jot down the dates for this show and plan to drive to Harrisburg to meet your fellow members from the Northeast part of this great country. We are looking forward to seeing all the people that stopped by to say hello and talk Cambridge glass last spring when we set up. We are looking forward to a very successful endeavor this November. We all need to do our part to help establish a new museum. PLEASE STOP BY. We can use the input and help from all members. "The more the merrier" has never been spoken in a more appropriate context. WE all look forward to seeing everyone. Let's make this November in Harrisburg, a true time for Thanksgiving. Till then, Best Wishes from all the members of the Elegant Glass Collectors study group.

---

## **NCC Museum Flood Media Kits are READY NOW!**

Please contact National Cambridge Collectors, Inc. if you are interesting in receiving a Media Kit to help with fundraising efforts. If you know a group or organization that would like to help, please let us know. The mailing address is: National Cambridge Collectors, Inc., P.O. Box 416, Cambridge, OH 43725-0416. Phone: 740-432-4245. FAX: 740-439-9223. E-Mail: [NCC\\_Crystal\\_Ball@compuserve.com](mailto:NCC_Crystal_Ball@compuserve.com).



**VISIT THE NCC WEBSITE  
TODAY**

**WWW.CAMBRIDGEGLASS.ORG**



# Tips on Keeping a Collection Under Control

## or

# How Many More Rooms Full of Glass Can There Be?

by Luene B. Brandt

We've all been there. You are dragged to "The Event." You now aimlessly wander through a "Flea Market," money burning a hole in your pocket. You are in need of a distraction. There! On that table ... What is that?

The shiny glass object has your attention. Its beauty draws you closer to it. You are intrigued by its shape, pattern, color, etching, memories it sparks? Pick one or all. Whatever! You pick it up and, as you fondle it, you decide that this piece of beauty should occupy a space in your home.

Now some fun begins! After all, you are in a flea market and dickering is definitely called for. So "How much is this?" you ask. (Real flea market vendors don't always have prices.) Or, if the price is marked, "Can you do any better?" or "Is this the best you can do?" you try. The seller and you agree on the value of the piece. It gets bundled up, maybe not to your satisfaction, but you carry it away with pride, joy, and relief. "The Addiction" begins.

That's how I started my glass collecting. Was my first piece of glass Cambridge? Definitely not. But, it did spark that interest in old glassware. As that spark grew into a bigger flame, so did the number of glassware pieces. And too, the knowledge about the different patterns and pieces and the companies that produced them.

My first pieces of Cambridge were a service for six in pink Cleo, with 12 stemmed water goblets. So a service of 12 should be completed, right? That's what I set about doing. In South Florida, not necessarily an easy task. However, I found a relatively local glass collecting club, learned about *The Daze* newsletter, discovered Glass Shows! These aided the quest for the elusive "Service For Twelve."

Of course, having found out about the existence of Cambridge Glass Company, I wanted to know more. I discovered the Cambridge Glass Collectors' Club. And ... the club sponsored a glass show and sale ... in June ... in, of all places, Cambridge, Ohio. Well, school was out! (I teach.) A perfect place to take a summer trip.

Now, my first visit to the annual show and sale was when "The Event" took place in the high school gym in Cambridge. No air conditioning? In summer? Well, fans were in place if my memory serves me correctly. And no air conditioning did not discourage the looking and buying by this collector.

Fanning the flames of interest were those dealers who

were collectors/dealers. They, along with many other club members, answered an array of questions fired at them by this novice collector. Dealers became a captured resource as they sat at their booths. Other club members could escape. I learned some history, gossip, and speculations during those question-and-answer sessions. There were also programs to attend to find out even more information!

Another devoted collector was forged during that convention.

My interest in Cambridge glassware expanded. So did the collection, of glassware and books. Books? Of course! ... to help identify what was and what wasn't Cambridge. More cabinets, shelves, ... boxes? were added to the home site. Just could not pass up those bargains.

Again we all have experienced this phenomena. There are differing ways to solve the problem. Become a dealer. This can take the form of advertising in the various antique and collectable newspapers. Or, you like to travel? Find out about the various glass shows and sales across the country or various antiques shows, flea markets, or your own yard sale.

You can't bear to ask money for these treasures? All right. How about the barter system. There are those out there who are sometimes willing to trade with you. You trade your million-dollar piece for two of their half-a-million dollar pieces. Warning!! Usually you're the one giving up two pieces.

For me, I've done many of the above. What I found really works is I have to limit my collecting. Okay, I'm being practical ... something I am not often accused of doing. Find different ways to combine what you collect. I really like Cambridge's stems and their cuttings. So, to save on space and have a method to my madness, I try to collect stems with cuttings.

You want table settings, but the "Service For Twelve" in 20 different patterns is not within your reach? Why not mix and match your place settings? Fiesta collectors have been doing this for years. Put that plain, white tablecloth on your table and let the pretty colors of Cambridge do your decorating.

When all else fails, buy the house next door. Then you have a place to live and your collection will have a place to reside.

Good Luck!!!



# NATIONAL STUDY GROUP REPORTS

## **Study Group #14 The Cambridge Cordials**

On Saturday, August 15, 1998, the Cambridge Cordials study group met at the home of Mike and Lisa Neilson. The following members were present: Cindy and Mike Arent, Kathy Chester, Mary Welker, Lynn Welker, Sharon and Joe Miller, Lisa and Mike Neilson, Lorraine Weinman, and J.D. Hanes.

The topic for the evening was reorganization and planning for the coming months. A calendar of meetings was set up and members volunteered to host the meetings. The meetings will be as follows: October 17, hosted by Judy Momirov; the Christmas meeting, December 19, hosted by Mary and Lynn Welker; February 20, tentatively hosted by Cindy and Mike Arent; April 17, hosted by Sarah Carpenter; May 15, hosted by Kathy Chester. The meeting themes will be determined by the host and/or as determined by the study group's needs.

Under current business, the members voted to pay for a banner to be donated for the temporary NCC Museum in Penny Court Antique Mall.

Discussion then continued to the topic of fundraising. Raffles and other fundraising efforts were discussed.

At this point, the business portion of the meeting came to an end. Everyone adjourned to the kitchen and dining room to a splendid feast prepared by Lisa Neilson. Mary Welker provided the dessert.

With appetites satisfied, the Cordials retired to the living room to enjoy an excellent "Show & Tell" session. It was a wonderful hands-on "show." Among the items on display and passed around were: a Helio Community covered soap dish; a Royal Blue sherry decanter with Sterling flamingo decoration; an Ebony boudoir lamp, gold-encrusted Lady with lamp; a Royal Blue #3400 bowl, gold-encrusted Wildflower; an Ebony atomizer, gold-encrusted butterflies and dragonfly; a Pamona vase; a Yale Bulldog tumbler; a Bluebell bunny box; a Bluebell dresser compact, early gold-encrusted Wildflower; a pressed Rosepoint ashtray; an Enamel Lady Blowing Bubbles cocktail mixer.

The evening was completed with a presentation by Mike Neilson of his trip to the Great Northeast Show in New York and a visit to the home of Rick and Cindy Jones. He

and Lisa also shared wonderful stories and memories about their family trip into Manhattan.

The next Cambridge Cordials meeting is scheduled to be Saturday, October 17, at the home of Judy Momirov.

~~~~~

## **Study Group #16 Elegant Glass Collectors**

On September 27, 1998, the Elegant Glass Collectors met at the home of Loretta and Charlie Weeks. Members attending were: Charlie and Loretta Weeks, Pam Earussi, John Corl, Bill and Leslie Connor, Bud and Anna Walker. Guests were: Dean and Kathy Stolberg.

We reviewed the Etchings Book, identifying what glass we have in our collections to make available for display in Harrisburg, at the show November 20, 21, 22, 1998. We heard an update on the Scotty Bookends, which we hope will help raise money for the NCC club, and ultimately a new NCC Museum. We heard a firsthand report from Bud Walker who spent over a week in Cambridge, Ohio, helping to clean up. Charlie proposed a holiday get-together in December.

Show and Tell included: a Crystal Cornucopia centerpiece with candleholders; a silver overlay Sea horse rose bowl, acid frosting; a Pristine hurricane lamp; a Crystal Gadroon ram's head bowl with Wildflower etch; a nude stem, gold etch, with gold-encrusted Portia etch on Crystal foot; a gold-encrusted Doulton pitcher, Wildflower etch; a Blue II 4-part, handled sweetmeat; a nude stem Cobalt comport; a Mulberry kerosene lamp.

—Submitted by Pam Earussi

***Look What's Back!***

**The Caprice book  
will be back in stock by  
December 1**

# AT CONVENTION



**Group #13**  
**The Miami Valley (Ohio)**  
**Study Group**

To the Left: (left to right) George Stamper, Bev Stamper, John Wilt, Helen Wilt, Norma Hufford, Judy Rhoads, Ken Rhoads, Vicki Wollenhaupt, Frank Wollenhaupt, Mac Otten, Ron Hufford, Phyllis Smith, Georgia Otten, Mark Smith.

**Group #14**  
**The Cambridge Cordials**  
**Study Group**

To the Right: (left to right) Mike Arent, Cindy Arent, Rich Bennett, Judy Momirov, Carl Beynon, Mary Welker, Sharon Miller, Shirley Beynon, Joe Miller, Lorraine Weinman, Lynn Welker, Jeff Ross.



**Group #16**  
**Elegant Glass Collectors**  
**Study Group**

To the Left: (left to right) Diane Chamberlain, Ed Chamberlain, Pam Earussi, Sharon Renz, Laura Tracy, Bonnie Stevens, Don Stevens, John Corl, Bud Walker, Anna Walker.



**NEIL & ROBERTA ROSS**  
**PO BOX 485**  
**MONTVALE VIRGINIA 24122**

**BLOSSOMTIME**

|                                        |        |
|----------------------------------------|--------|
| 8" Plate Martha (3) .....              | 24.00  |
| Relish 3 Part Martha .....             | 60.00  |
| Ice Bucket Martha .....                | 145.00 |
| <b>CAPRICE BLUE</b>                    |        |
| #58 12 1/2" Alpine Bowl .....          | 135.00 |
| #65 Bowl 12" Oblong .....              | 125.00 |
| #136 7" Tall Compote .....             | 120.00 |
| #165 6" 3 Footed Candy & Cover .....   | 225.00 |
| #42 3 Piece Cream, Sugar & Tray .....  | 130.00 |
| #213 Ash Tray W/ Card Holder (5) ..... | 18.00  |
| #300 Goblet 9 oz. (4) .....            | 55.00  |

**CHANTILLY**

|                                             |        |
|---------------------------------------------|--------|
| Bowl 10 1/2" 3 Part Pristine S/S Base ..... | 225.00 |
| P306 Candy & Cover .....                    | 135.00 |
| 3625 Goblet 10 oz. (8) .....                | 42.00  |
| 1177 Salt & Pepper .....                    | 65.00  |
| Cream & Sugar Ind. 3500 .....               | 65.00  |
| P671 Ice Tub S/S Base .....                 | 175.00 |
| P286 2 Part Mayo S/S Base .....             | 125.00 |
| Vase 10 1/2" S/S Base .....                 | 125.00 |
| 3400 Cruet (2) .....                        | 125.00 |
| Vase Bud 10 1/2" .....                      | 100.00 |
| Plate B&B Martha (8) .....                  | 24.00  |
| Plate 7 1/2" Martha (8) .....               | 28.00  |
| Plate 8 1/2" Martha (12) .....              | 28.00  |
| M440 12 1/2" Martha Bowl .....              | 125.00 |
| Cup & Saucer Martha (8) .....               | 50.00  |
| Cup & Saucer 3900 .....                     | 50.00  |

**ROSEPOINT**

|                                        |        |
|----------------------------------------|--------|
| Cup & Saucer 3900 (7) .....            | 50.00  |
| Plate 9 1/2" Dinner 3400 (4) .....     | 100.00 |
| Cheese & Cracker .....                 | 195.00 |
| 1066 Compote .....                     | 150.00 |
| 3900/67 Candle Pair .....              | 135.00 |
| 3400/52 Butter & Cover .....           | 225.00 |
| 3500 Cream & Sugar Ind. .....          | 65.00  |
| 3500 Parfait (5) .....                 | 115.00 |
| 7966 2 oz. Sherry (5) .....            | 150.00 |
| 3500 Oyster Cocktail (2) .....         | 60.00  |
| 3500 10 oz. Goblet Long Bowl (4) ..... | 48.00  |
| 3121 12 oz. Ice Tea (10) .....         | 45.00  |

**CORDIALS**

|                           |       |
|---------------------------|-------|
| 3121 Rosepoint (6) .....  | 95.00 |
| 3121 Elaine .....         | 95.00 |
| 3122 Diane .....          | 75.00 |
| 1066 All Light Blue ..... | 45.00 |
| 1066 Amethyst (2) .....   | 55.00 |
| 3035 Amethyst (2) .....   | 55.00 |
| 3600 Chantilly .....      | 65.00 |
| 3779 Roselyn .....        | 75.00 |

**ELAINE**

|                                  |        |
|----------------------------------|--------|
| Cup & Saucer 3400 (8) .....      | 50.00  |
| 3500/67 6 Piece Relish 12" ..... | 275.00 |
| 3400/851 Ice Pail .....          | 135.00 |
| Plate 8 1/2" 3400 (8) .....      | 30.00  |
| 3500 Parfait (6) .....           | 90.00  |
| 3500 Ice Teas 12 oz. (7) .....   | 45.00  |

**DECAGON LT/BL**

|                                   |        |
|-----------------------------------|--------|
| Cup & Saucer (8) .....            | 20.00  |
| 3077 Tall Sherbert (3) .....      | 28.00  |
| 3077 Goblet (3) .....             | 33.00  |
| Bowl 12 1/2" (2) .....            | 80.00  |
| Plate 8 1/2" (8) .....            | 22.00  |
| 1147 Ice Bucket .....             | 125.00 |
| Cream Soup & Liner .....          | 35.00  |
| 3077 Fruit Salad (7) .....        | 25.00  |
| 3077 Low Sherbert (4) .....       | 24.00  |
| Cup & Saucer Cleo (5) .....       | 33.00  |
| 1167 8" 2 Handle Pickle (2) ..... | 20.00  |

**DIANE**

|                                        |        |
|----------------------------------------|--------|
| Cup & Saucer 3400 (8) .....            | 50.00  |
| Plate 9 1/2" Dinner 3400 (4) .....     | 70.00  |
| 3400/1240 Bowl 12" Oblong Footed ..... | 125.00 |
| Plate 8 1/4" 3400 (12) .....           | 22.00  |
| Plate B&B 3400 (12) .....              | 20.00  |
| Compote 3500 (2) .....                 | 60.00  |
| 1066 Ash Tray .....                    | 275.00 |
| Cheese & Cracker .....                 | 135.00 |
| 1338 3 Lite .....                      | 100.00 |
| 3122 Sherbert Tall (12) .....          | 30.00  |
| 3122 Sherbert Low (3) .....            | 24.00  |
| 3122 Goblet 9 oz. (10) .....           | 38.00  |
| 647 Candle 2 Lite Keyhole Pair .....   | 125.00 |
| Butter 3400/52 W/ Cover .....          | 195.00 |
| Regency Cocktails (3) .....            | 75.00  |
| Regency Tall Sherbert (8) .....        | 50.00  |

**WILDFLOWER**

|                                           |        |
|-------------------------------------------|--------|
| Cup & Saucer 3400 (7) .....               | 50.00  |
| 3400/851 Ice Pail Chrome Handle .....     | 150.00 |
| 1238 Vase Keyhole 12" .....               | 150.00 |
| 3400/175 Cocktail Shaker #10 Top .....    | 195.00 |
| 3400/647 Candle 2 Lite Keyhole Pair ..... | 125.00 |
| 3400/52 Butter & Cover .....              | 200.00 |
| 3400/9 7" Candy & Cover .....             | 185.00 |
| 3900 Cream & Sugar .....                  | 75.00  |
| Cheese & Cracker .....                    | 135.00 |
| 3500 Cream & Sugar Ind. .....             | 65.00  |
| 3121 Sherbert Tall (13) .....             | 35.00  |
| 3121 Cocktail (8) .....                   | 30.00  |

**DECAGON PINK**

|                             |       |
|-----------------------------|-------|
| Cup & Saucer (4) .....      | 20.00 |
| Plate 8 1/2" (6) .....      | 18.00 |
| Plate B&B (10) .....        | 15.00 |
| Cream Soup & Liner .....    | 35.00 |
| 3075 Sherbert Low (4) ..... | 15.00 |
| 3077 Goblet (2) .....       | 28.00 |
| 3077 Tumbler (5) .....      | 28.00 |
| 3075 Goblet .....           | 22.00 |

All prices each. All glass Mint. Shipping extra. No returns without prior approval with our label intact within 10 days. Checks will be held until cleared.

540 947-2399 BEFORE 9 PM EASTERN

Please call after 11/5/98. Thank you.



## CAMBRIDGE GLASS BOOKS FOR SALE

By National Cambridge Collectors, Inc.

### Colors in Cambridge Glass

128 pages, 60 color plates, full index. Hardbound w/valueguide ..... 19.95

### 1910 Nearcut

108-page reprint of original 1910 catalog. PB w/valueguide ..... 14.95

### 1930-1934 Cambridge Glass Co. Catalog Reprint

250-page reprint of original catalog. PB w/value guide ..... 14.95

### 1949-1953 Cambridge Glass Co. Catalog Reprint

300-page B&W reprint of original catalog. B&W paperback with value guide ..... 14.95

### Cambridge Caprice

200-page book illustrating one of the most popular lines of Cambridge Glass. Lists color, decorations, reproductions and rare pieces.

Paperback with value guide ..... 19.95

### 1940's Cambridge Glass Co. Catalog Reprint

250-page reprint of original catalog and all well known supplemental pages. Drilled, ready for placement in your own three-ring binder. Due to its size, the reprint does not include a value guide B&W. 34.95

### Cambridge Rose Point by Mark Nye

94-page book listing of Rose Point from several sources: catalogs, trade journals, price lists, etching plates, and other surviving company records. One of the most popular lines of The Cambridge Glass Company, showing the many blanks on which Rose Point might be found along with the history and production life of the line. B&W paperback with value guide ..... 14.95

### Etchings by Cambridge, Vol. 1 By the Miami Valley Study Group

84-page book showing samples of plate etchings applied by The Cambridge Glass Company. B&W paperback. Due to the style of publication this book does not have a value guide ..... 14.95

### The Home of "Near-Cut" Factory Post Card

B&W picture of The Cambridge Glass Company post card ..... 50

### Crystal Lady Video

Approximate 25 minute video copy of old Cambridge Glass Co. film showing the making of a goblet in the Cambridge factory ..... 15.00

### Rose Point Value Guide (Included with Rose Point Book purchase)

Updated value guide only, includes postage ..... 5.00

**For N. C. C. Members, the above publications at a 10% discount**

Other books on Cambridge Glass

### Cambridge Glass 1927-1929 by Bill and Phyllis Smith

66-page reprint of original catalog. B&W paperback with updated value guide ..... 7.95

### Cambridge Stemware by Mark A. Nye

167 page book showing as many known Cambridge stems known at the time of publication. B&W paperback. No value guide ..... 19.95

### Cambridge Glass Company by Mary, Lyle and Lynn Welker

120 pages of reprints from eight old catalogs. B&W paperback. No value guide ..... 10.00

### Cambridge, Ohio Glass in Color II by Mary, Lyle and Lynn Welker

15 Color plates showing choice pieces from their collection. Spiralbound. No value guide ..... 5.95

### Cambridge Glass Company 1903 by Harold & Judy Bennett

106-page reprint of original catalog. B&W paperback N/value guide 7.50

### Reflections by the Degenhart Paperweight & Glass Museum

45-page book giving a history of all 18 glass companies in Guernsey County. B&W paperback with pictures ..... 5.00 including postage

address orders to:

Books, National Cambridge Collectors, Inc.

P. O. Box 416

Cambridge, OH 43725-0416

Please add postage and handling to your order (first book, \$3.00; each additional book \$1.00). Ohio residents add 6 1/2% state sales tax.

Only check or money order. NO CASH, NO CHARGE CARDS.

Dealer Discounts Available. Please Write!

## OTHER ITEMS FOR SALE FROM THE NATIONAL CAMBRIDGE COLLECTORS GLASS MUSEUM

### Brochures:

|                       |      |
|-----------------------|------|
| Cambridge Arms.....   | 1.00 |
| Cambridge Square..... | 25   |
| Chantilly.....        | 25   |
| Laurel Wreath.....    | 10   |
| Lynbrook.....         | 10   |
| Martha.....           | 25   |
| Regency.....          | 25   |
| Rock Crystal.....     | 10   |
| Rose Point.....       | 50   |
| Roxbury.....          | 10   |
| Star.....             | 10   |

*Please include SASE for above brochures*

**Cup Plates** showing Cambridge Pencil dog in bottom. Made by Pairpoint in Crystal, Teal Green & Amethyst. Boxed ..... ea ..... 2.00

*Please include \$3.00 shipping & handling on each order*

The following Convention Favors are marked with the N.C.C. name & yr.

### Convention favors

|                                                     |      |
|-----------------------------------------------------|------|
| 1984 Pink, 2 1/2 oz. Georgian Tumbler.....          | 2.00 |
| 1985 Amber, 2 1/2 oz. Georgian Tumbler.....         | 2.00 |
| 1986 Yellow, 2 1/2 oz. Georgian Tumbler.....        | 2.00 |
| 1987 Lt. Blue, Marjorie Punch Cup.....              | 2.00 |
| 1988 Cobalt, Cambridge Square Cigarette Holder..... | 2.00 |
| 1989 Teal Green, Mt. Vernon Cordial.....            | 2.00 |
| 1991 Cobalt Blue, Mt. Vernon Cordial.....           | 2.00 |
| 1994 Crystal Iridized, Cascade Goblet.....          | 5.00 |
| 1995 Cranberry Ice, Cascade Goblet.....             | 5.00 |
| 1996 Carnival, Cascade Goblet.....                  | 5.00 |
| 1997 Green, Opal Edge, Cascade Goblet.....          | 5.00 |

**Eagle book end**, Fund raiser, Cobalt blue..... 30.00

**Prism** with "Cambridge" on one side. Fund raiser, Mint Julep..... 15.00

*Please include \$3.00 shipping & handling on each order of 5 items*

### Books by Gene Florence

Hardbound color with value guides

|                                                                          |       |
|--------------------------------------------------------------------------|-------|
| Stemware Identification featuring cordials, 1920 - 1960's - 158 pgs..... | 24.95 |
| Very Rare Glassware of the Depression Years, Vol. 1 - 127 pgs.....       | 24.95 |
| Very Rare Glassware of the Depression Years, Vol. 2 - 140 pgs.....       | 24.95 |
| Very Rare Glassware of the Depression Years, Vol. 3 - 143 pgs.....       | 24.95 |
| Very Rare Glassware of the Depression Years, Vol. 4 - 143 pgs.....       | 24.95 |

*Shipping is \$3.00 for first book and \$1.00 for each additional book*

**Salt & Pepper tops**, Polycarbon plastic, will fit most regular sized Cambridge shakers such as Rose Point ftd and flat bottomed shakers. Also fit Heisey Rose, Saturn, Plantation, Crystalite and some Orchid. Fit some Anchor Hocking and Candlewick. made from the same material used to make taillight lenses for autos.

Price: 1 to 9 pairs @ \$6 per pair - 10 or more pairs @ \$5 per pair

*Shipping & Handling is \$3.00 per order on S&P tops*

Send all orders to:

National Cambridge Collectors, Inc.

P. O. Box 416

Cambridge, Ohio 43725-0416

# ~ GLASS ~ MARKETPLACE

## Classifieds

**WANTED:** Rare or unusual pieces of Cambridge Glass especially Opaques or Carnival. Also Cambridge Art Pottery. Top prices for outstanding pieces. **Call collect 609-965-2413.**

**WANTED:** "Any piece of Cambridge Etch 520, in pink." Please e-mail at [dhmjh@ibm.net](mailto:dhmjh@ibm.net) or phone (714) 538-6656. Thanks. Mary Jane.

**WANTED:** Cambridge Georgian tumblers, 12-oz. size, in Cobalt, light or dark Emerald, Heatherbloom, Crystal, or Amber. Please call (214) 977-1302 (office) or (972) 699-1730 (home). Thanks! Lucia Bryant.

**WANTED:** Rare or unusual pieces of Cambridge Glass, Rose Point, 3106 Rose Point stems, Marjorie etched items, decorated opaques, Cambridge Art Pottery, nude stems, swans, and novelty items. **Contact Jim & Nancy Finley, 711 W Broadway, Sedalia, MO 65301, (660) 826-5032 or e-mail: [nFinley@iland.net](mailto:nFinley@iland.net).**

**WANTED:** Inserts for 3400/41 frappe. See 1930-1934 book, page 32-4. **Jim Kennon 813-869-7013, [jkennon@att.net](mailto:jkennon@att.net).**

## ADVERTISE HERE NOW!

You never know who you are missing.

### Bogart's Bed & Breakfast

62 W. Main Street, New Concord  
New Concord lodging in 1830 Federal  
Style home, decorated with  
antiques throughout.



### Bogart's Antiques

7527 E. Pike, Norwich OH  
Quality Antiques Bought & Sold

OWNERS: Jack & Sharon Bogart  
872-3514 or 826-7439

## The DAZE Inc.

**SPECIAL OFFER**  
to NC Friends  
12.30.05  
the 7 year subscription price  
shown on this form is based on the

The Original National monthly newspaper dedicated to the buying, selling and collecting of American made glassware china, and pottery from this century. We educate and inform you each month with feature articles by top notch writers, readers letters, club happenings, reproduction news, show reports and there are hundreds of dealers to help you fill in the missing pieces of your collection. "Keep up with what's happening" . . . Subscribe today!

Name \_\_\_\_\_

Street \_\_\_\_\_

City \_\_\_\_\_

State \_\_\_\_\_ Zip \_\_\_\_\_

1 year \$21.00     2 years \$40.00     \$2.00 Single Copy

Subscription Hot Line: 1-800-336-9927

Exp. Date \_\_\_\_\_ Card No. \_\_\_\_\_

Signature \_\_\_\_\_

### Orders to:

**The Daze, Inc., Box 57, Otisville, MI 48463**

Please allow 30 days for your first issue - Canadian Subscribers, add \$1.00 per year and subscribe by charge card only! This Special Offer may not be combined with any other special offer.

Offer Expires December 31, 1998



## Stems Without Thorns

As the world's largest supplier of discontinued and active china, crystal, flatware and collectibles, Replacements, Ltd. has over 325 different patterns of Cambridge crystal.

And however much we enjoy selling pieces which were once thought irreplaceable, we love buying them as well. Thanks to people like you, our crystal inventory currently numbers in the hundreds of thousands, and the numbers keep growing every year.

So, if you've been unsuccessfully searching for that elusive piece of Cambridge - or any other type of fine crystal - call us for a free list of pieces available in your pattern. And, if you're looking to sell pieces you currently have, we can help you there, too.

## REPLACEMENTS, LTD.

China, Crystal & Flatware • Discontinued & Active

1-800-REPLACE  
(1-800-737-5223)

1089 Knox Road,  
PO Box 26029, Dept. CB,  
Greensboro, NC 27420



## DEALERS



## DIRECTORY

NOTE: When writing to the dealers listed here, please enclose a SASE!

|                                                                                                                                                                                                                                                                     |                                                                                                                                                                                                                  |                                                                                                                                                                                                                                        |
|---------------------------------------------------------------------------------------------------------------------------------------------------------------------------------------------------------------------------------------------------------------------|------------------------------------------------------------------------------------------------------------------------------------------------------------------------------------------------------------------|----------------------------------------------------------------------------------------------------------------------------------------------------------------------------------------------------------------------------------------|
| <p><b>DAUGHERTY'S ANTIQUES</b><br/>Jerry and Shirley</p> <p>Antiques and Collectibles * Mostly Glass</p> <p>Shows &amp; Mail Orders 2515 Cheshire No<br/>402-423-7426 Evenings Lincoln NE 68512</p>                                                                 | <p><b>"HAPPINESS IS"</b><br/>Buddy and Kathy Stultz</p> <p>3106 Warren Court, Glen Allen, VA 23060<br/>804-672-8102</p> <p>Specializing in American Made Glass<br/>We Buy &amp; Sell, Shows &amp; Mail Order</p> | <p><b>THE JONES GROUP</b><br/>Cindy Jones</p> <p>Buy and Sell Cambridge Glass<br/>650 Riverside Drive<br/>Sleepy Hollow, NY 10591<br/>914-631-1656 or E-Mail Caprice0@aol.com</p>                                                      |
| <p><b>Milbra's Crystal</b> Buy &amp; Sell<br/>Replacement and Matching Specializing in<br/>Cambridge<br/>Milbra Long (817) 645-6066 Fostoria<br/>Emily Seate (817) 294-9837 Heisey<br/>PO Box 784, Cleburne, TX 76033 and others<br/>E-mail: longseat@flash.net</p> | <p><b>YOU CAN ADVERTISE YOUR<br/>ANTIQUe SHOP HERE!</b></p>                                                                                                                                                      | <p><b>MARY JANE'S ANTIQUES</b><br/>Mary Jane Humes</p> <p>2653 Burgener Dr., Decatur, IL 62521<br/>Depression Era Items<br/>Cambridge and Other Elegant Glass<br/>mjhumes@aol.com 217-422-5453</p>                                     |
| <p><b>THE GLASS URN</b><br/>456 West Main Street, Suite G<br/>Mesa, AZ 85201 602-833-2702</p> <p>Mail Order Shows Open Shop</p> <p>CAMBRIDGE, FOSTORIA, HEISEY, ETC.</p>                                                                                            | <p><b>ANTIQUES ON THE MALL</b><br/>SPECIALIZING IN CAMBRIDGE GLASS</p> <p>Bogart's - Bldg. #3 - Norwich, OH</p> <p>Virginia Bennett 740-432-4483<br/>64183 Warne Drive, Cambridge, OH 43725</p>                  | <p><b>GATEWAY ANTIQUE MALL, INC.</b><br/>JUST NW OF MINNEAPOLIS-ST. PAUL, MN<br/>Next to Super 8 in Rogers, MN<br/>(I-94/101 Intersection)</p> <p>85 Dealers 7 Days, 10-6 612-428-8286<br/>ELAINE STORCK, OWNER/DIRECTOR</p>           |
| <p><b>THE DEGENHART PAPERWEIGHT<br/>AND GLASS MUSEUM, INC.</b></p> <p>P.O. Box 186<br/>Cambridge, Ohio 43725-0186<br/>Intersection of US 22 &amp; I 77<br/>Phone 740-432-2626</p>                                                                                   | <p><b>D &amp; D ANTIQUES</b></p> <p>Columbus, Ohio</p> <p>Dick Slifko SHOWS ONLY</p>                                                                                                                             | <p><b>JAMESTOWN ANTIQUES</b><br/>16 E. Washington St., Jamestown, OH 45335</p> <p>Rosepoint and Cambridge our Specialty<br/>Shows and Shop (chance or appt.)</p> <p>Buy (937) 675-6491 Sell<br/>Susan and Larry Everett</p>            |
| <p><b>THE GLASS CUPBOARD</b></p> <p>P.O. Box 652<br/>West End, North Carolina 27376</p> <p>Marcia Ellis Cambridge, Heisey<br/>910-673-2884 Shows, Mail Order</p>                                                                                                    | <p><b>JUDY'S ANTIQUES</b><br/>Judy Bennett<br/>422 S. Ninth Street (Corner of Jefferson)<br/>Cambridge, Ohio 43725<br/>Bus 740-432-5855<br/>Res 740-432-3045<br/>CAMBRIDGE GLASS MY SPECIALTY</p>                | <p><b>Horse'n Around Antique Mall</b><br/>Kelvin and Heather Moore</p> <p>Rte. 1, Box 272<br/>Woodlawn, IL 62898<br/>Interstate 64 Exit 69<br/>TEL: 618-735-2222</p>                                                                   |
| <p><b>FINDER'S ANTIQUE HOUSE</b><br/>3769 Highway 29 North<br/>Danville, VA 24540<br/>(804) 836-6782<br/>Cambridge-Heisey-Duncan-Fostoria</p>                                                                                                                       | <p><b>GREEN ACRES FARM</b><br/>2678 Hazelton Etna Rd., Pataskala, OH 43062<br/>(State Route 310 North)</p> <p>Sat &amp; Sun 1-7 PM 740-927-1882<br/>Antiques, Crystal Glass and Collectibles</p>                 | <p><b>CRYSTAL LADY</b><br/>1817 Vinton St., Omaha, NE 68108</p> <p>Bill, Joann, and Marcie Hagerty<br/>Bus. 402-341-0643 Res. 402-391-6730<br/>Specializing in Elegant Glass &amp; Collectibles</p>                                    |
| <p><b>YOU CAN ADVERTISE YOUR<br/>ANTIQUe SHOP HERE!</b></p>                                                                                                                                                                                                         | <p><b>YOU CAN ADVERTISE YOUR<br/>ANTIQUe SHOP HERE!</b></p>                                                                                                                                                      | <p><b>PENNY COURT MALL</b><br/>637 Wheeling Avenue<br/>Cambridge, Ohio<br/>100 Booths 15,000 sq. ft.<br/>HOURS: Daily 10-6 Sunday Noon-5<br/>Closed: Easter, Thanksgiving, Christmas<br/>Call for Other Holiday Hours 740-432-4369</p> |
| <p><b>MICHAEL KRUMME</b><br/>Cambridge and other elegant glassware</p> <p>(213) 874-GLASS e-mail: mkrumme@pacbell.net<br/>website: http://www.glassshow.com<br/>PO Box 48225<br/>Los Angeles CA 90048-0225 Send your want list</p>                                  | <p><b>Warren and Mary Welsh</b><br/>Cambridge &amp; Other Elegant Glassware</p> <p>3635 Saddle Rock Rd., Colorado Springs, CO 80918<br/>(719) 531-5866<br/>WELS@EARTHLINK.NET</p> <p>MAIL ORDER SHOWS</p>        | <p><b>MARGARET LANE ANTIQUES</b></p> <p>2 E. Main St., New Concord, OH 43762<br/>Lynn Welker 740-826-7414</p> <p>Cambridge Glass Matching Service<br/>Hours Mon-Fri 10-12 AM, 1-5 PM or by Appointment</p>                             |
| <p><b>ISAACS ANTIQUES</b><br/>(740) 826-4015</p> <p>See our booths in Penny Court Mall in Cambridge<br/>and East Pike Antique Mall at Rt. 40, one mile west<br/>of I-70 Norwich Exit #164</p>                                                                       | <p><b>ALADDIN LAMP BOOKS</b><br/>Free List<br/>Figurine Lamps Wanted<br/>Bill &amp; Treva Courter</p> <p>3935 Kelley Rd. Kevil, KY 42053<br/>Phone/FAX 502-488-2116</p>                                          | <p><b>DEXTER CITY ANTIQUE MALL</b></p> <p>P. O. Box 70, Dexter City, Ohio 45727<br/>(740) 783-5921</p> <p>Located on Ohio St. Rt. 821<br/>Between Exits 16 &amp; 25 off I-77<br/>Just 30 min. South of Cambridge, Ohio</p>             |

1 • 9 • 9 • 8

# EASTERN NATIONAL ANTIQUES SHOW

**More than 350 dealers from  
across the Nation featuring:**

*Decorative Accessories • Objects D'Art • Glass • China  
Porcelains • Pottery • Quilts • Fine Art • Collectibles • Silver  
Lamps • Jewelry • Clocks • Toys • Dolls • Games • Prints  
Books • Postcards • Maps • Primitives • 18th & 19th Century  
Furniture • Tools • Primitives and much more*

## **Plus Special Exhibits & Restorers**

- *Antiquing on the Internet*
- *National Cambridge Collectors Club*
- *Early American Pattern Glass Society*
- *Sylvio the Glassman- Glass/China Repair*
- *Veronique's Antiques- Metal Restoration*
- *Organically Yours Products- Jewelry Cleaning*

State Farm Show Building  
Cameron St. Exit 23, I-81 • Harrisburg, Pennsylvania

# November 20-22

Friday 11-7 Saturday 11-6 Sunday 11-5

*Admission \$8.50-\$5.00 with this ad • Free Parking*

CHAMBERS ASSOCIATES • P.O. Box 1786, Allentown, PA 18105  
610/437-5534

National Cambridge Collectors Inc  
PO Box 416  
Cambridge OH 43725-0416

<http://www.cambridgeglass.org>  
e-mail: [NCC\\_Crystal\\_Ball@compuserve.com](mailto:NCC_Crystal_Ball@compuserve.com)

FIRST CLASS MAIL  
U.S. POSTAGE  
PAID  
PERMIT NO. 1  
CAMBRIDGE, OH

## FIRST CLASS MAIL

### *Membership Renewal Notice*

**If the date on your address label is 11-98,  
this is your LAST ISSUE of the Crystal Ball.  
Please take a moment and renew now. Thank you!**