



Cambridge Crystal Ball

Published monthly by National Cambridge Collectors, Inc.
to encourage and report the discovery of the elegant and boundless product of the
Cambridge Glass Company of Cambridge, Ohio

Issue No. 280

August 1996

1996 Convention Highlights and Memories

Hundreds of glass collectors from 27 states gathered in Cambridge for the 23rd annual National Cambridge Collectors' convention. It was an opportunity to share their interests and to add new pieces to their collections.

This year's event began on Thursday with a tour of the Fenton factory. Added to the program was an orientation session at the Pritchard Laughlin Civic Center which introduced the 22 convention first-timers to Cambridge and the convention. Later that evening there was a picnic where members could renew old friendships, share stories about their collecting and meet new fellow collectors.

Friday morning saw many members enjoying coffee and conversation at the National Cambridge Collectors' Museum. That afternoon, Mark Nye, a noted author and expert on glass, presented a program about Cambridge glass in the 1940s. Mark discussed the lines and pieces of glass that were introduced in the 1940s, as well as the glass which continued to be made during that time. Among the items introduced in the '40s were: top hats, the eagle handle relish, the Dresden Lady, the Arcadia line,

(Continued on page 12)



CAUTION! - You have to be quick to beat out some people to be first in line for the Antique Show and Sale. Ed Dudley, Jim Finley, Alberta Dudley and Nancy Finley had the favored spots in line this year.
(Photo by Cindy Arent)

Inside This Issue:

Some Things To Think About

How It All Began
Near Cut

Annual Meeting Minutes

Cambridge Crystal Ball

Official publication of National Cambridge Collectors Inc., a non-profit corporation with tax exempt status. Published once a month for the benefit of its members. All rights reserved; reproduction in whole or in part without written permission of NCC and the author is prohibited.

Membership is available for individual members at \$17.00 per year and an additional \$3.00 for associate members (12 years of age and older, residing in the same household). Of the master member dues, \$12.00 is credited to a one-year subscription to the *Crystal Ball*. All members have voting rights, but only one *Crystal Ball* per household. **Effective 1/1/96, multi-year memberships are available: 2 years for \$33.00, 3 years for \$49.00.** Back issues of the *Crystal Ball* are available for \$1.00 each or 12 issues for \$10.00. Complete sets for \$79.00.

1995-1996

OFFICERS AND COMMITTEE CHAIRPERSONS

President	Richard D. Jones
Vice President	Mark A. Nye
Secretary	Bud Walker
Treasurer	Charles Upton
Sergeant-at-Arms	Tarzan Deel
Acquisitions	Joe Andrecjak
Budget & Finance	Mark A. Nye
By-Laws	Charles Upton
Long-Range Planning	Tarzan Deel
Membership	Jeff Ross
Museum Expansion/Relocation	Willard Kolb
Museum Facilities	Carl Beynon, Joe Miller
Museum Interior	J.D. Hanes
Non-Glass Items	Tarzan Deel
Nominating	Joy McFadden
Program	Bill Hagerty
Projects	Tarzan Deel
Publications	Mark A. Nye
Publicity	Cynthia A. Arent
Study Group Advisor	Marybelle Moorehead
1996 Convention	Mark A. Nye, Bud Walker
1996 Auction	Lynn M. Welker
1996 Antique Show	Mary Beth Hackett, Joy McFadden
1996 Flea Market	Mike Arent
<i>Crystal Ball</i> Editor	Lorraine Weinman

National Cambridge Collectors Inc. owns and operates the **Museum of Cambridge Glass** at 9931 East Pike Road, Cambridge, Ohio. Open April through October 9AM-4PM Wednesday through Saturday and Noon-4PM on Sunday. March open Friday-Sunday. Closed November-February, Easter, July 4th.

ADVERTISING RATES

Display Rates (camera ready ads preferred)

Unit	Members	Non-Members
Full Page	\$45.00	\$60.00
3/4 Page	\$35.00	\$50.00
1/2 Page	\$25.00	\$35.00
1/4 Page	\$15.00	\$25.00
1/8 Page	\$10.00	\$15.00

Classified Rates

10 cents a word \$2.00 minimum

Abbreviations and initials count as words. Type sizes cannot be mixed in classified ads. **Payment in full must accompany all ad copy.** Contact Editor for copy assistance.

Dealer Directory

Six Line Maximum \$24.00 for 12 month contract

Cambridge Crystal Ball assumes no responsibility for items advertised and will not be responsible for errors in price, description, or other information.

Advertising copy, letters, articles, must be received by the 5th of preceding month to be considered for publication in the next issue.

Please address all correspondence (include SASE) to:

National Cambridge Collectors, Inc.
P.O. Box 416
Cambridge, OH 43725-0416

President Rick Jones	914-631-1656
Vice President Mark Nye	517-592-3578
Secretary Bud Walker	609-965-2413
NCC Museum: Phone and Fax	614-432-4245

Please notify us immediately of any address change.

Opinions or information stated in any signed article or letter printed in the *Crystal Ball* are those of the author and may not agree with National Cambridge Collectors, Inc. The Editor reserves the right to refuse and to edit any material submitted for publication to conform to the editorial style of the *Crystal Ball*. Members are encouraged to write to NCC and the *Crystal Ball* sharing their knowledge and questions!

President's Message

Some Things to Think About

It has been suggested that I keep this column short and sweet this month. Not my normal "novel."

We have much to report on this month. Notably, our very successful 1996 Convention. We want to share highlights with our members who could not join us, and relive pleasant memories for the couple hundred of you who were our guests this June.

First, for those of you who have not yet scanned to the bottom of this column to the signature, my name is Rick Jones and I have been reelected as your president. It was touch and go for a while. I started a new business this year and my time was getting very pressed. My inclination was to not seek reelection, but several club friends persuaded me otherwise. To those culprits, I will always harbor anger, and great thanks, because my passion for things Cambridge remains very strong.

Our convention, in short, was terrific. Mark Nye is to be commended for his outstanding job in coordinating this immense task. There were dozens of supporting troops ... those who knew their roles months in advance and those who chipped in during the spur of the moment. You are all important and we owe you big thanks!!!

Also, I sensed the best comradery and inclusion in years. First-time attendees were recognized, involved and saluted. No more stepchildren here. Members from all regions attended and were involved. My thanks to our friends from Nevada, Texas and Dayton for their constructive contributions and affinity for our club.

Since I've already exceeded most people's definition of brief, let me leave you with some things to think about.

- For those of you who traveled a great distance to the convention, please share your stories. (Are you listening Ra Nae?)

- For those who have been disappointed in the club, please share your feelings. (My thanks to those of

you who called in early July about your "lost" book orders. We'll try to get things to you ASAP.)

- Next month, we'll be publishing in the *Crystal Ball* a survey called Cambridge 2000. It was designed by our Long Range Planning Committee led by Tarzan Deel. Its limited release to a handful of members generated significant response, some of it quite controversial. Great dialogue, important to hear. Now, I'd like it exposed to the whole membership. Let's hear from you. Where do you think this club should be come the new millennium?

- There is a groundswell to increase the club's visibility regionally. How can you help promote NCC at a regional glass show? Would **you** like to host a quarterly meeting outside the confines of Cambridge, Ohio? Give it some thought.

- What should be our priorities as we face the new club fiscal year? I WANT TO HEAR FROM YOU.

All my best and let's keep talking.

Rick

EDITOR'S NOTE:

Due to the excitement of the 1996 Convention, Murphy's Law and some other unforeseen events, this month's *Crystal Ball* is later than usual.

Hopefully this has not caused you any inconvenience, and it will be back to its usual delivery next month.

Fernland.

No. 2635.

SCALE HALF SIZE.



6 inch Comport, J Shape.
Packed 4 dozen in a barrel.



6 inch Comport, K Shape.
Packed 4 dozen in a barrel.



6 inch Comport, M Shape
Packed 4½ dozen in a barrel.



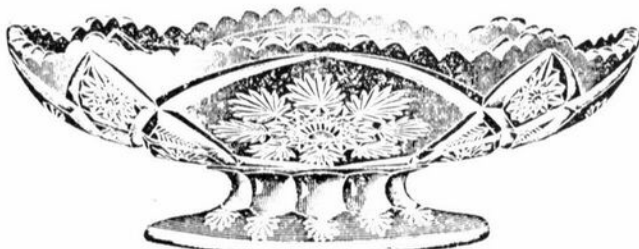
6 inch Comport, G Shape.
Packed 4 dozen in a barrel.



6 inch Comport, C Shape.
Packed 4½ dozen in a barrel.



6 inch Comport, E Shape.
Packed 4½ dozen in a barrel.



6 inch Comport, H Shape.
Packed 4½ dozen in a barrel.



6 inch Comport, F Shape.
Packed 4 dozen in a barrel.

How It All Began

by Mark Nye

At the NCC Convention this past June, I received a request for an article on Near Cut or the Near Cut era. It's been awhile since there has been such an article, so this month we travel back in time to 1902. Before we begin, perhaps a word or two about the term "Near Cut" is in order for novice readers.

Written as one or two words, Nearcut or Near Cut, the term is a trademark used both on glass and in print by Cambridge starting around 1903-1904. It was designed to describe the ware Cambridge was making that imitated, and often quite well, actual cut glass. The Near Cut era lasted until the early 1920s when the Cambridge lines changed and a new trademark, the familiar C in a triangle was developed.

In the beginning, Cambridge was owned by National Glass Company and it was they who built the factory and hired Arthur J. Bennett to operate the facility for them. Construction began in 1901 and production commenced at the completed Cambridge Glass Co. factory in May 1902. Construction of the factory was chronicled in the trade journals, including *China, Glass and Lamps* (CGL). The following quotes, all taken from CGL, take us through the final months of construction and the start of Cambridge Glass Co. production.

"The National Glass Co.'s two important plants under construction were expected to be in operation this month. The Rochester works have the foundation and steel girders for the first floor in place with a small portion of the frame for the first story erected. Their Cambridge plant has the building erected and the majority of the machinery installed...."

CGL Feb. 2, 1902

"Arthur J. Bennett, who left New York to take the presidency of the Cambridge Glass Co., Cambridge, Ohio, says that there is every prospect that the factory will be making glass early next month. Severe weather and the difficulty in obtaining building material retarded progress, but now everything seems to be going ahead. He says the factory is about as near perfect as can be, and with natural gas and good shipping facilities they will be able to hold their own with any of the other factories."

CGL March 20, 1902

"The Cambridge plant of the National Glass Co., it is now announced by its managers, will be completed and making glass on May 1. It will make general lines of glassware, tumblers, tableware, etc. It is a three furnace plant and one of the most complete extant."

CGL April 10, 1902

"Thos. G. Edge, who will handle in this market <New York City - Ed. note> the product of the Cambridge Glass Co., has just received their catalogue. It contains 140 pages of cuts, which include about everything that is made in table glass. It is expected that in another week the factory will be turning out ware."

CGL April 27, 1902

"The Cambridge Glass Works, a model three furnace plant with every modern improvement, commenced making glass this week."

CGL May 8, 1902

By September 1902 Cambridge advertisements were appearing in the trade journals. The first known advertisement appeared in the September 25, 1902 issue of CGL. Without illustrations, its text read: "A.J. Bennett, President. The Cambridge Glass Co. Cambridge, Ohio, Manufacturers of Pressed and Blown Tableware and Specialties. We also operate the Canton Glass Works and make the full line of Druggists' glassware, Fish Globes, Cake Covers, etc. Catalogs and Price Lists mailed on application. Special attention to the making and working of Private Moulds. Pressed Vault, Sidewalk and Skylight Glass. New York Agency - Thos. G. Edge, 66 West Broadway. Resident agents in all the large cities. Traveling salesman in every State. Write us and we will have our salesman call upon you." <Capitalization in this and other ad copy is that used by Cambridge.> This same advertisement then appeared in the next five issues of CGL.

A new advertisement appeared in the November 6, 1902 issue of CGL and it ran for four more weeks, ending with the December 4 issue. It stated the Cambridge Glass Co. was a manufacturer of high-grade tableware and specialties, druggist glassware, etc. It also listed the names and addresses of nine agents where samples could be seen. New York, Philadelphia, Baltimore, Chicago, Indianapolis,

(Continued on page 7)

Radium.

No 2626.

SCALE, HALF SIZE



Berry Sugar.
Packed 14 dozen in a barrel.



Berry Cream.
Packed 17 dozen in a barrel.



Sugar and Cover.
Packed 6 $\frac{1}{4}$ dozen in a barrel.



Spoon.
Packed 9 dozen in a barrel.

Sets pack 1 $\frac{1}{2}$ dozen in a barrel.



Cream, Stuck Handle.
Packed 8 dozen in a barrel.



Butter and Cover.
Packed 4 $\frac{1}{2}$ dozen in a barrel.

St. Louis, Kansas City (MO), Denver, and San Francisco all had resident Cambridge agents as 1902 came to a close.

The December 11, 1902 Cambridge advertisement in CGL read: "The Cambridge Glass Co. Cambridge, O., manufacturers of Pressed and Blown Glassware of every description. Special reasons why you should be interested in us: This factory produces the highest class of glassware. We make prompt shipment and give out trade very consideration and attention. The variety is immense and the capacity equal to the demand. Our new catalog of regular table glassware and druggist specialties will be ready in January. Make your application and we will put your name on the mailing list, and we will also keep you posted on new additions to our line from time to time."

No additional advertisements appeared in CGL until January 1904 when Line No. 2626 or Radium as well as the "Near-Cut" trade mark first appeared in the January 21, 1904 issue. The list of cities having show rooms now numbered 12. Denver and Indianapolis had been dropped but added were Pittsburgh, Buffalo, Cincinnati, Portland, and Seattle.

"Something Entirely New for 1905 In Near Cut Glass. Its the Acme of Glassmaking. Jobbers and first-class retailers must have it. Samples will be ready January 1st, 1905. Made Exclusively by The Cambridge Glass Co. Cambridge, Ohio." Thus read a full-page advertisement in the December 15, 1904 issue of CGL.

At the 1905 Pittsburgh Exhibit, the Cambridge Glass Co. had two rooms at the Monongahela House hotel. "In 41 and 42, three lines of new table patterns are displayed by Arthur Bennett of the Cambridge Glass Co. Two are heavy imitation cut, and one a kind of basketwork pattern. The figures are new and in harmonious proportions." CGL Jan. 12, 1905

One of the lines described in the preceding paragraphs in No. 2631 or Marjorie as it appeared in a full page advertisement in the February 9, 1905 issue of CGL with the caption "We invite you to inspect our New Line of "Near-Cut" Glass out for 1905. It is a fine line of heavy pressed glass, the nearest to cut glass ever made. The metal is of clear crystal and of very brilliant finish. Don't fail to see it." Without line numbers or names it is impossible to say with certainty what the other two line numbers may have been. Fernland with a line number of No. 2630 is a good candidate as is No. 2700 for the "basketwork pattern."

(To Be Continued)

"NEARCUT" DESIGN 2631.



Cream.



Covered Sugar.



Spoon Holder.

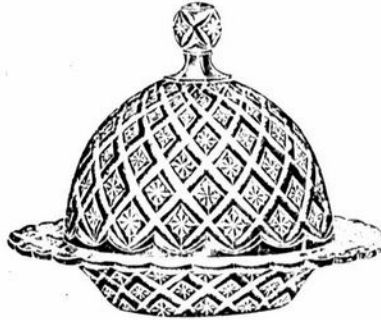


No. 2700 Ware.

SCALE, THIRD SIZE



Sugar and Cover.
Packed 6 dozen to a barrel.



Butter and Cover.
Packed 4½ dozen in a barrel.

Set packed 1¼ dozen in a barrel.



Cream.
Packed 10½ dozen in a barrel.



Spoon.
Packed 11 dozen in a barrel.



Teal Celery.
Packed 5 dozen in a barrel.



6 ounce Oil, D. S.
Packed 10 doz. in a barrel.



Molasses Can, N. T., 13 oz.
Packed 9½ dozen in a barrel.

~ NATIONAL STUDY GROUP REPORTS ~

Study Group #11

The Cambridge Nudes

The Cambridge Nudes met June 9, 1996 at the home of Bob Cole. Members in attendance were: Jim and Rose Curnutt, Bob Cole, B.J. Kersey, Larry Powers, Toby Mack, Marti DeGraff, Mary and Walter Kreitling, Mary Sue Lyon. Guests were: Diane and Don Enz, Barb and Norm Balliet, Lory and Bob Wellbeloved, Etta Nerjes.

The members gathered at Bob's home in Gurnee, IL following the morning's activity of searching The Grays Lake Flea Market for that elusive glass treasure. Joining the 10 Nudes were their guests.

The program consisted of limited explanations of how some of the show and tell items were made and/or decorated. Also a special thank you was extended to Mrs. Georgann Dusek of Beacon Hill Antiques, Orland Park, IL for her gracious donation to the NCC Museum of a custom-made piece of Rose Point for Wallace Sterling Company and its sterling silver holder in March of this year. The donation was channeled through a member of the Nudes as Mrs. Dusek is not a member of NCC, but is interested in the preservation of glass history and artifacts.

With the completion of the short program we engaged in a session of show and tell with the following items being in evidence:

274 Ivory 12 in. vase, Iris enameled decoration; 3400/29 Heatherbloom/crystal 7 in. tall comport; 206 Helio ftd. perfume, gold decoration, DeVilbiss atomizer; 197 Peach Blo 6 oz. tal oil G.S., etched 760;7966 Crown Tuscan 2 oz. sherry, gold encrusted etch Portia, black CT stamp; 1402/64 Crystal 10 1/2 in. low ftd. Tally Ho bowl, etched 718 (Royal Hunt); 1070 Amber 36 oz. pinch decanter and stopper with two 3000 3 oz. tumblers (gold band on foot), etched Cleo; 674 Lgt. Emerald console bowl (5mm mark) and two 728 candlesticks, gold encrusted "Lotus Glass Company" etching Xenia (895); Ebony boudoir lamp, gold encrusted etching Dancing Girl; 3450 Nautilus Forest Green 28 oz. decanter in Farber holder and six 1 oz. tumblers; Bohemian lgt. green 3 oz. whiskey tumbler enameled "Hotel Crsa Johann"; Crystal decanter, press cut decoration, circa 1955, probably French mfg.; Crystal two-light candlabrum, press cut decoration, 30% lead crystal, 1960s West German mfg.; Crystal 1893 World's Fair 3 oz. whiskey tumbler, mfg. unknown; two Crystal 3 oz. whiskey

tumblers with silver deposit decoration, mfg. unknown; Hawkes Crystal 5 in. magnum decanter stopper, umbrella type, tear drop, copper wheel engraving Oregon, Hawkes trefoil acid stamp; Hawkes 7 in. ftd. comport, rolled edge (A.H. Heisey blank No. 1511-Tourjours-Diamond H mark-circa 1940), medium blue stain over crystal, sterling rim and foot decoration, gray copper wheel engraving through stain, Hawkes trefoil acid stamp; Northwood (Indiana, PA plant) Canary Yellow Opalescent 8 in. jelly compote in Inverted Fan and Feather pattern; Fostoria 2484 Crystal Baroque 9 in. three-light candlabrum; Fostoria Crystal 6 oz. tumbler, white silk screened "Merry Christmas, Fostoria Glass Company, Moundsville, West Virginia"; Fostoria 824 Amethyst (Silver Mist finish) Jenny Lind Pitcher; Fostoria 2349 Green cigarette; Fostoria 500 (Atlanta) aka Atlanta Lion or Lion Head 9 1/4 in. ftd. sq. cake salver (this piece is being donated to the Fostoria Glass Museum by Mary Sue Lyon); Fostoria 2309 Orchid 3 3/4 in. flower block, 1-5-10 holes through; Fostoria Wild Rose syrup can, spun nickel top, cold applied enamel and gold decoration; Fostoria 575 (Carmen) Crystal cologne and stippled drip stopper; Fostoria 2322 Crystal cologne, drip stopper and 2338 Crystal puff and cover, both decorated gold and orange; Crystal sea horse stem 6 oz. saucer champagne, mfg. unknown; Fostoria Green flower block, 1-6-12-12 holes through except outer holes blind; Iridized Lgt. Green 3 in. ruffled peg vase with machine trailed threading of Swedish origin; two hexagonal decanters, possibly Paden City contract pieces, one in green in a handled holder with an unidentified etching, the other in a vaseline yellow used as the center standard for the metal ferris wheel type of holder for six matching color 1 oz. whiskey tumblers, the latter set etched in a grape leaf cluster and leaf pattern by an unknown decorator.

The meeting was completed by a delightful repast served by Mr. Cole.

- Submitted by B.J. Kersey

(Continued on page 10)

1996 Calendar Planning

The following are tentative dates for major club activities during 1996:

August 24	Quarterly Meeting/Picnic
November 2	Quarterly Meeting/Program

*(Continued from page 9)***Study Group #13****The Miami Valley (Ohio) Study Club**

The monthly meeting of the Miami Valley Study Club was called to order at 6:58 p.m. on Tuesday, May 14, 1996 at the Huber Heights Library by President Georgia Otten. Fourteen members were present: John and Helen Wilt, Frank and Vicki Wollenhaupt, Judy Rhoads, Dave and Sue Rankin, George and Beverly Stamper, Mac and Georgia Otten, Fred Schaeffer, Norma and Ron Hufford.

Congratulations were extended to the new officers:

President - George Stamper
 Vice President - Ron Hufford
 Secretary - Dave Rankin
 Treasurer - Mac Otten

Summer activities include a picnic at Phyllis Smith's in Columbus on July 13 and a pig roast on Sept. 14 at the Stamper's. That will be our annual "Summer Finds" meeting. At least 15 of our members will be attending Convention this year.

Program: The program on Caprice in Colors was led by the Stampers and the Rhoads. Members brought over 60 pieces of Caprice for illustration. Sixteen of the eighteen colors that Caprice was made in were represented. An informational handout accompanied the discussion that was led by George Stamper. His discussion of unanswered questions and anomalies reflected his research and knowledge of Caprice. The program was videotaped for future reference.

Show and Tell: #1596 6 1/2" candlestick; #3400/4 12" Amethyst 4 toe bowl, etched gold-encrusted Gloria; #3126 Gold Krystol 1 oz. cordial; #1070 Peach-blo 32 oz. pinch decanter, etched modified Adam, border #725, acorns; 7 1/2" epergne vases, etched RosePoint; Rubina 3 pc. night set; #493 Virginian 2 1/2" candlestick; #1338 Caprice Mandarin Gold 3 lite candlestick; #501 Virginian 6" double candlestick; Everglade (Springtime) vase, black satin.

-Submitted by Judy Rhoads, Secretary

Study Group #16**Elegant Glass Collectors**

The Elegant Glass Collectors met Thursday, June 20, 1996 in the Walkers' motel room, Deer Creek Inn, Cambridge, OH. Members attending were: Bud

and Anna Walker, Don and Bonnie Stevens, John Corl. Guests were: George Fogg, Frank Maloney.

Recent finds were displayed. Unusual finds were: a Cobalt tall bitters bottle, and smaller bottle, 3400 line, some Cobalt coasters, and unusual Nearcut early pieces from the 1903 catalog: a 2660 footed Wheat Sheaf Nearcut goblet, an early 1903 patterned wine, a #130 square candy plate, a #2729 10 oz. berry cream pitcher, a #2658 4 oz. mug, a #2636 creamer and wine, a #2651 Inverted Feather whiskey, a #668 3/4 oz. cordial, a #2508 D-shaped nappy, a pitcher and champagne in Guernsey #2692, and a "watch cover" which has a knob, and is circular, which is designed to cover a pocket watch. Plans were made to sit together at the banquet and also to meet at the Great Northeast Depression Era Glass and Pottery Show at the Westchester County Center, White Plains, NY on Sunday, August 11, at 10:00 a.m. or thereafter. Show your Cambridge membership card for the discounted rate. A packed lunch will help save money for glass. Supper will be at a nearby restaurant.

-Submitted by Pamela Earussi

Cambridge For Sale

line #	description	price
#39	11 1/2" flat rim console bowl and pair of 9 1/2" candlesticks, Avocado, set	\$165 00
#92	11" stick vase, Helio	\$50 00
#95	Caprice individual shakers, glass lids	\$45 00
#243	Caprice 8 1/2" vase, Amber	\$65 00
#3121	blown lid for stemmed covered candy, <u>Wildflower</u> etch	\$30 00
#3600	cordials, <u>Chantilly</u> etch (4) each ..	\$52.50
swan	10 1/2", Ebony, Type I, marked ...	\$395 00

MICHAEL KRUMME

P.O. Box 5542

Santa Monica, CA 90409-5542

(213) 936-4214

7 AM to 10 PM Pacific

UPS shipping is INCLUDED in all prices! If I'm not in, please leave a message. ALL calls will be returned. "Do you still have?" calls are welcome any time, no matter how late you get your *Crystal Ball*. Send your detailed want list for elegant glass - I search, all lists are kept on file. My personal wants: Tally Ho flat punch cups in crystal, any number; one #3500 Gadroon individual creamer, Diane etch; ebony #1228 9" "pillow" vase, no decoration.



Former Cambridge Glass Co. Workers Reunion



Antique Show and Sale Dealers

(Continued from page 1)

cornucopia candleholders, bookends. An interesting historical glass film titled "The Crystal Lady" was then shown.

The Antique Show and Sale opened its doors Friday afternoon at 4:30 p.m. and continued with hours until Sunday afternoon. This annual event sees anxious buyers camping out early in the day to hold the prestigious places in line for the opening. For the second year in a row, Ed and Alberta Dudley of Columbus were first in line. Their arrival at 8:45 a.m. beat out Jim and Nancy Finley by a mere seven minutes. Following them in line were: Nyla and Brute Stanton, Joe Adorjan, Rich Bennett, Mike and Lisa Neilson and many other glass collectors hoping to be the first to find and purchase rare and unique pieces of Cambridge glass. There were 24 dealers present this year coming from New York, Florida, California and many states in between. The showroom literally sparkled with all the crystal and colored glass on display. RosePoint, Carmen and Cobalt Blue pieces were among the favorite items to be purchased this year.

Those dealers present were: T.P. Antiques, Hank Pugliese, Erie, PA; Falira's Antiques, Falira Lisak, Monroeville, PA; Crows Nest, Constance Crow, Austin, TX; Priscilla's Glass Gallery, Priscilla Southworth, Titusville, FL; Roy and Cynthia Ash, Marietta, OH; Hardtimes Glassware, Sam and Rebecca Collings, Brookfield, OH; The Glass Cupboard, Marcia and Bob Ellis, West End, NC; Tom and Noreen Kullman, Zanesville, OH; The Glass Seekers, Pamela Earussi, Lansdale, PA; Berkeley Antiques, George Fogg and Frank Maloney, Boston, MA; Margaret Lane Antiques, Lynn Welker, New Concord, OH; Sentimental Journey, Cliff and Lydia McNeil, East Palatka, FL; Antique Menagerie, Kelvin Moore, Tecumseh, MI; John and Philip Parr, San Francisco, CA; To Each His Own Memories, Neil Ross, Montvale, VA; Unger Junction, Neil and Eddie Unger, Rolling Meadows, IL; Leasures Treasures, Leora Leasure, Eighty Four, PA; Florence and Joe Solito, Tolland, CT; Bowmans Cambridge Corner, Margaret F. Bowman, Asheville, NC; Rick and Cindy Jones, North Tarrytown, NY; Everett's Collectibles, Glen Everett, Marysville, WA; Cecile Taylor, Marysville, WA; Thomas K. Smith, Indianapolis, IN; and Kevin Coughlin, Ansonia, CT. (Photograph of dealers is on Page 11.)

Following the Friday evening dinner, the notorious mini-auction was held. Once again Willard Kolb from

St. Clairsville persuaded buyers to go even further in their bidding to purchase glass and items donated to be auctioned. This highly entertaining event raised \$6,666 to benefit the National Cambridge Collectors' Museum. A Cambridge baby bottle went for \$1,200 and was then donated to the museum. Among the non-glass items auctioned were: Cleo etched napkins, a Caprice Ball Jug quilted wall-hanging, a watercolor by Paul White.

Early Saturday morning, interested collectors found their way to the flea market at Beech Grove Family Development Center. Many exciting purchases were made before breakfast from the 20 dealers set up there. The flea market was a success with a profit of around \$2,100. Saturday afternoon, Mark Nye presented a session discussing the Rock Crystal engravings in the 1940s. Convention attendees saw examples of the many engravings and were able to have their questions answered. This program was followed by the ever popular Glass Identification and Bring and Brag sessions presented by Lynn Welker, local glass authority. The room was filled with anxious collectors as Lynn identified glass and verified Cambridge pieces. Later observers were in awe of the many rare Cambridge pieces that collectors brought to impress and share with fellow interested collectors.

Following the Saturday night banquet, Willard Kolb spoke about the Rodefer Glass Company. The Rodefer Glass Company was the oldest company owned by one family in one location and was in operation for 105 years in Bellaire, Ohio. It was a private mold company that was used by a large number of the glass companies such as: Cambridge, Fostoria, Paden City, New Martinsville, C.F. Monroe, Smith Brothers Glass Co., H.J. Hall, and many others.

Sunday morning, the annual meeting followed a buffet breakfast. The newly elected board of directors members had been previously announced. They were: Cindy Arent, Tarzan Deel Jr., MaryBelle Moorehead. The board positions are: President, Rick Jones; Vice President, Mark Nye; Secretary, Bud Walker and Treasurer, Charles Upton.

The annual Cambridge Glass Company workers' reunion Sunday afternoon saw 46 former workers in attendance. This chance to visit and reminisce was added to by the opportunity for the former workers to visit the show and sale and see many of the pieces

(Continued on page 14)

Convention 1996 Photo View

Photographs by Mike Neilson and Cindy Arent



Friday evening auction: Rick Jones, Auctioneer Willard Kolb, George Fogg. Sitting- Suzanne Smith and Jack Smith. (Arent)



Early birds at the Flea Market found that getting up early paid off. (Neilson)



Coffee with Cambridge - L-R, Fleur de Lis Healy, Leonard Healy, Ben Swindler, Emil Kleemann, Margaret Swindler enjoying the NCC museum. (Arent)



Lynn Welker's booth at Antique Show and Sale: L-R, Janice Hughes, Mary Welker, Lynn Welker, Kay Mears (Neilson)



Margaret and Tom Bowman were new dealers at the show this year. Being held are: Ebony gold encrusted urn and Amber gold encrusted Portia ball jug. (Neilson)



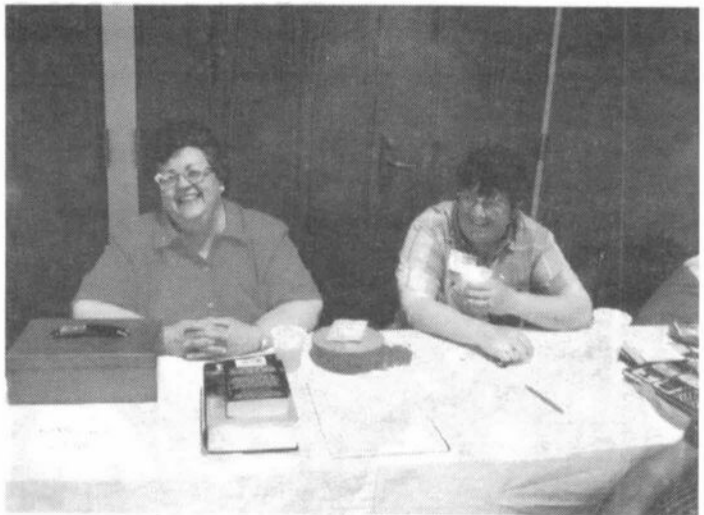
Enjoying the Saturday evening banquet: L-R, Gwen Cortese, Sarah Carpenter, Sharon Miller, Mary Martha Mitchell. (Arent)

(Continued from page 12)

of glass that they once helped make.

Those former workers in attendance were: Kenneth Giesey, Mary Martha Mitchell, Gwen Cortese, Margaret Sowinski, Dorothy Golden, Helen Hosko, Edna Powell, Paul O'Malley, Mabel Burris, Mary Wiggington, Wilma Headley Watson, Elva Voltz, Maxine Shaffer Weisenstine, Minnie Johns, Mary Holliday, Mary Benedick, Clara Valentine, Betty Frontz, Harriett Cantor, Faye Bonnell Culbertson, Effie Tucker Tom, Beatrice Saltz Horton, Fern Lengen, Jeannie Selock, Shirley Barnett, Dorothy Black Church, Mabel P. Williams, Daisey Moffatt Hagan, George Buttress, Ralph Whitis, Jim Boyd, Bill Boyd, Raymond Slifko, Bob Selock, John Krak, Herman Jones, Vada Wilson, Alice Howell, Don Frontz, Ed Lehotay, Harold Conrath, Bill Frost, Leroy Conrath, Richard Long, Vernon Mercer, Jake McCall, Pauline Tickhill, Clyde Shaffer, and Ralph Cramblett. (See photograph on Page 11.)

As the convention wound down late Sunday afternoon, many of those in attendance felt that it had been a very good convention, one to be remembered. New acquisitions to collections were on their way home. New and old friends also were taking home many shared stories and memories of this successful convention.



Antique Show Chairpersons: Joy McFadden and Mary Beth Hackett (Neilson)



Eager collectors move into the preview Friday night. L-R, Bonnie Stevens, Don Stevens, Doris Shepherd, Albert Shepherd. (Arent)



Helping assemble reprint pages for the 1940 Catalog are: L-R, Marge Kleemann, Emil Kleemann, Janice Applegate. (Arent)



Dale Snode, our security guard, looks over a wonderful display of Cambridge glass. (Neilson)

ANNUAL MEETING MINUTES

by Bud Walker, Secretary

Sunday, June 23, 1996

Upon completion of a delicious buffet breakfast, which was well attended by members who attended the 23rd annual convention of the National Cambridge Collectors Inc., President Rick Jones called the meeting to order. President Jones introduced Dennis Snyder who in conjunction with Charles Upton have revamped our method of accounting which will allow more of this work to be done in house which will offer better inventory control and lower our accounting costs. Gross income was reported to be fourteen hundred dollars. Of this, thirteen hundred and six dollars were payment of dues.

Report of Committees-

- **Acquisitions:** Reported the purchase of a Primrose ivy ball, a Carnival Buzz Saw Near Cut piece and a Marjorie tall vase made to hold a candle. These unusual pieces were purchased during the auction and show.
- **By Laws:** Reported no changes.
- **Long-Range Planning:** No report at this time other than a plan is being formulated that will carry us beyond the year 2000.
- **Membership:** Reported there are 955 members, 378 associate members, 5 honorary and three lifetime members, for a total of 1341. The book table reported that they had signed up 10 new members during the convention.
- **Relocation/New Museum:** No report at this time.
- **Facilities:** Reported that the water and sewer line at the museum will require repairs and upgrading.
- **Mini Auction:** It was reported that this year's auction raised \$6,666.66. This money is used in the operation of our museum, and we all owe our auctioneer a big "thank you" for the job he does.
- **Non Glass:** The last of the turn cards are ready to send to Corning to be put on microfilm.
- **Nominating:** No report.
- **Program:** Reported that our November meeting will be at the Cambridge Country Club, and an interesting program on different glass companies will be presented.
- **Projects:** Reported that we still have a few

prism signs left. If anyone wants one they are on a first-come basis. The group is currently working on salt shaker caps. The 40s catalog has been corrected and is now on sale.

- **Study Groups:** Several groups reported and Georgia Otten reported they hope to have the first book of a three book series on Cambridge etchings ready for the 1997 Convention, if all goes as planned.
- **Publicity:** Reported on the excellent coverage we have received in the local newspapers. We also were covered by the local radio station. The city of Cambridge is beginning to realize the impact the convention has on the local economy.
- **Flea Market:** It was reported that the 1996 flea market profit was \$2140. This was the best year ever for this worthwhile fundraising event.
- **Antique Show:** Thanked all the dealers.
- **Convention:** The best ever, thanks to everyone who helped.

President Jones thanked the dealers and all those who helped in any way to make this convention one of the finest we have ever had. He also thanked all those who attended the convention and supported the organization through their generous donations and purchases from our dealers. Without this support there would be no convention and Cambridge Glass would not have the recognition it so richly deserves. President Jones closed the meeting wishing all those in attendance a safe journey home.

WE CLEAN CLOUDY GLASS! SATISFACTION GUARANTEED

Yes, it is true that we really can restore the interior of your cruet, vase, decanter and other *internally* etched items back to near original condition!

We do not oil, wax or cover up the sickness in any way! We actually **remove** it.

No items are too sick to clean! If we cannot clean an item to meet your satisfaction, the cleaning is **FREE!**

Send no money up front. When we return your item a bill will be enclosed for the postage and cleaning. If you are not satisfied, only the return postage is requested.

Most items clean in 6-8 weeks. All glass is handled and cleaned at your risk. Some very cloudy items may take several additional weeks.

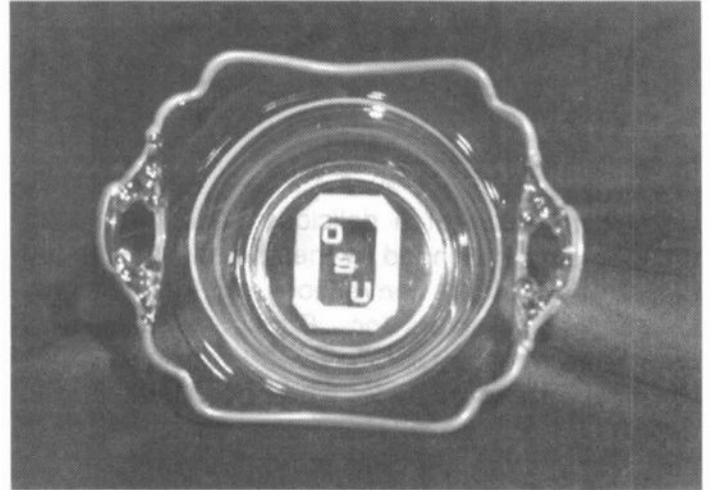
Cruet	\$20.00	Cocktail Shaker	\$30.00
Vinegar & Oil	\$25.00	Salt Shaker (one)	\$15.00
Cologne	\$20.00	Salt Shaker (pair)	\$25.00
Decanter	\$30.00	Water Bottle	\$30.00
Vases (under 12")	\$25.00	Lavender Jar	\$20-30.00

Ship to: **Kim Carlisle & Associates**
28220 Lamong Road, Dept. C
Sheridan, IN 46069
(317) 758-5767

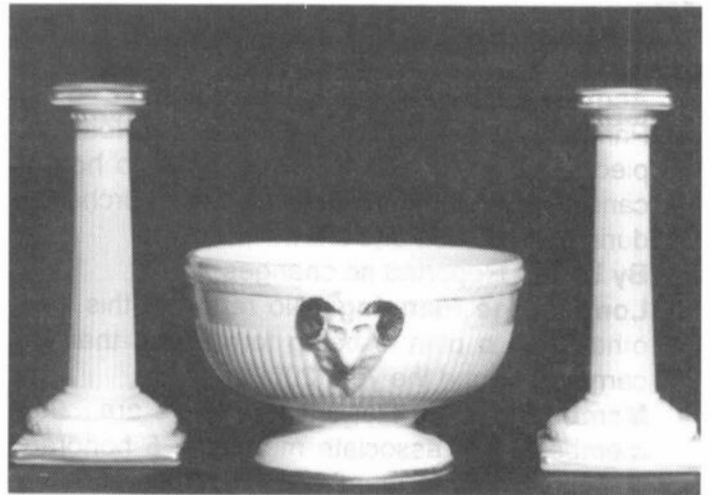


RECENT FINDS

- Blue Alpine Caprice #178 Doulton Pitcher
- Wildflower gold encrusted lamp
- Lt. Emerald dresser compact w/silver oriental overlay design
- Avocado egg cup
- Ivory Samovar
- Royal Blue Tally Ho tankard pitcher and 6 goblets, all w/silver overlay design
- Amber #1338 Gadroon style 3 lite candlesticks
- Caprice Nude ivy ball vase
- 13" vase etch #742 w/Ebony foot
- Crystal turkey and Crystal Chantilly cornucopias
- Ivory Rams Head bowl and sticks w/mint gold decoration
- "OSU" decorated jelly bowl
- Crown Tuscan 11" basket
- #3400/9 7" Crystal candy box and cover gold encrusted "Diane"



"OSU" Decorated Jelly Bowl



Ivory Rams Head Bowl and Sticks

Bogart's

Bed & Breakfast

62 W. Main Street, New Concord
New Concord lodging in 1830 Federal
Style home, decorated with
antiques throughout.



Bogart's Antiques

7527 E. Pike, Norwich OH
Quality Antiques Bought & Sold

OWNERS Jack & Sharon Bogart
872-3514 or 826-7439



Crystal Turkey and Crystal Chantilly Cornucopias

ISAACS ANTIQUES

We are taking this opportunity to thank you
for your past patronage.

We invite you to attend our
retirement sale to liquidate the entire inventory.

Thanks to All of You,
Doris and Roy

ISAACS ANTIQUES



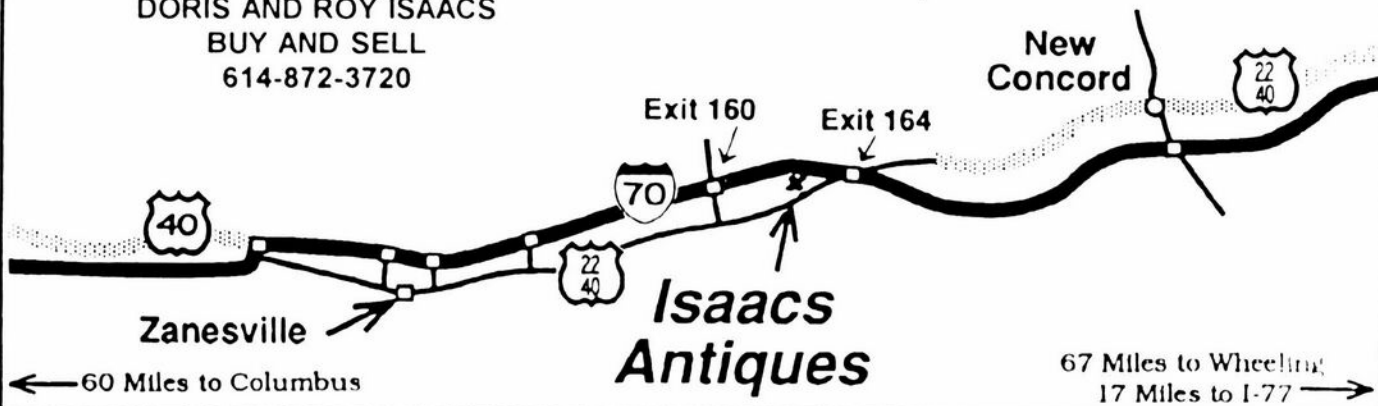
WE FEATURE GLASSWARE OF: CAMBRIDGE,
HEISEY, FENTON & FOSTORIA
Plus Art Pottery & a General Line of Antiques

DORIS AND ROY ISAACS
BUY AND SELL
614-872-3720

7525 East Pike
Norwich, Ohio 43767
614-872-3720

In East Pike Antique Complex - Rt. 40,
One Mile West of I-70 Norwich Exit #164

Hours 10 - 5:30 Mon. - Sat.
12 - 5:30 Sun.
Open Year Round



~ GLASS ~ MARKETPLACE

Classifieds

WANTED: Two Monkeys Lamp - Crown Tuscan Scottie or Pouter Pigeon - Also looking for #2800/234 Crystal Community Wash Basin. **If you have or find, call collect 1-609-965-2413.**

WANTED: Cambridge Arms, Epergnnes plus Accessory Pieces. Vases #2355 any size and bobeches #327. **Jody Stacken, 3022 Quail Creek Dr., Topeka, KS 66614. (913) 272-7118.**

WANTED: Hard to find Rose Point, Rose Point #3106 stems, Nude stems, and novelty items. Write price and description. **Nancy and Jim Finley, 711 West Broadway, Sedalia, MO 65301. Phone (816) 826-5032 or 827-0101.**

WANTED: HUNTING FOR HO. Tally-Ho; cocktail shakers, jugs, candlesticks and vases in colors. Please call me if you have any to sell. Thanks! **Cindy Jones (914) 631-1656.**

FOR SALE: 1930s Cambridge crystal punch bowl on pedestal base, cut Wild Rose pattern with 12 cups - two slightly damaged. In catalog reprint 1976. Asking \$400. **Lore Gollnick, 5510 61st St. East, Bradenton, FL 34203.**

Sometimes a mouth that is shut
Says more than one that is open . . .
Consideration for the one who is hurt
By comment unkind and coping.
A touch upon a bent shoulder
That shows you are standing by,
Or a wave to one who is going
After a critical "Goodbye."
A comment often says too much
When words add only distortion.
A friendly pat disarming a slur
Bringing a joint agreement potion.
A card to fit the occasion
Is a modern way to cope,
With a hand-written message
Better yet, - to say "I hope."
(Paul E. White 5/26/96)

The **DAZE** Inc.

SPECIAL OFFER
to NCC friends
\$2.00 OFF
the 1 year subscription price
when on this form or copy of it.

The Original National monthly newspaper dedicated to the buying, selling and collecting of American made glassware china, and pottery from this century. We educate and inform you each month with feature articles by top notch writers, readers letters, club happenings, reproduction news, show reports and there are hundreds of dealers to help you fill in the missing pieces of your collection. "Keep up with what's happening" . . . Subscribe today!

Name _____
Street _____
City _____
State _____ Zip _____
[] 1 year \$21.00 [] 2 years \$40.00 [] \$2.00 Single Copy
Subscription Hot Line: 1-800-336-9927
Exp. Date _____ Card No. _____
Signature _____

Orders to:
The Daze, Inc., Box 57, Otisville, MI 48463
Please allow 30 days for your first issue - Canadian Subscribers, add \$1.00 per year and subscribe by charge card only! This Special Offer may not be combined with any other special offer.
Offer Expires December 31, 1997



Stems Without Thorns

As the world's largest supplier of discontinued and active china, crystal, flatware and collectibles, Replacements, Ltd. has over 325 different patterns of Cambridge crystal.

And however much we enjoy selling pieces which were once thought irreplaceable, we love buying them as well. Thanks to people like you, our crystal inventory currently numbers in the hundreds of thousands, and the numbers keep growing every year.

So, if you've been unsuccessfully searching for that elusive piece of Cambridge - or any other type of fine crystal - call us for a free list of pieces available in your pattern. And, if you're looking to sell pieces you currently have, we can help you there, too.

REPLACEMENTS, LTD.
China, Crystal & Flatware • Discontinued & Active

1-800-REPLACE
(1-800-737-5223)

1089 Knox Road,
PO Box 26029, Dept. CB,
Greensboro, NC 27420

DEALERS



DIRECTORY

NOTE: When writing to the dealers listed here, please enclose a SASE!

<p>DAUGHERTY'S ANTIQUES Jerry and Shirley</p> <p>Antiques and Collectibles * Mostly Glass</p> <p>Shows & Mail Orders 2515 Cheshire No 402-423-7426 Evenings Lincoln NE 68512</p>	<p>"HAPPINESS IS" Buddy and Kathy Stultz</p> <p>3106 Warren Court, Glen Allen, VA 23060 804-672-8102</p> <p>Specializing in American Made Glass We Buy & Sell, Shows & Mail Order</p>	<p>THE MUTED SWAN ANTIQUES</p> <p>5486 Peachtree Rd. Chamblee, GA 30341 Heart of Chamblee Antique Row Specializing in Cambridge, Heisey and Fostoria</p> <p>Bill & Pat Miller 404-451-7620</p>
<p>Milbra's Crystal Buy & Sell Replacement and Matching Specializing in Cambridge Milbra Long (817) 645-6066 Fostoria Emily Seate (817) 294-9837 Heisey PO Box 363, Rio Vista, TX 76093 and others</p>	<p>BUY-SELL _____ (513) 390-3617</p> <p>Taste of Honey Glassware - Collectibles</p> <p>Clarke West 4888 Brannan Dr. E Carole West Springfield, OH 45502</p>	<p>ARMORY ANTIQUES 168 West Main Street Plain City, OH 43064</p> <p>QUALITY THINGS Cambridge, Heisey, China, Silver, Furniture Mon-Sat 10-5 VISA/MC 614-873-4890</p>
<p>THE GLASS URN 456 West Main Street, Suite G Mesa, AZ 85201 602-833-2702</p> <p>Mail Order Shows Open Shop</p> <p>CAMBRIDGE, FOSTORIA, HEISEY, ETC</p>	<p>ANTIQUES ON THE MALL SPECIALIZING IN CAMBRIDGE GLASS</p> <p>Bogart s - Bldg #3 - Norwich, OH</p> <p>Virginia Bennett 614-432-4483 64183 Warne Drive, Cambridge, OH 43725</p>	<p>GATEWAY ANTIQUE MALL, INC. JUST NW OF MINNEAPOLIS-ST. PAUL, MN Next to Super 8 in Rogers, MN (I-94/101 Intersection)</p> <p>85 Dealers 7 Days, 10-6 612-428-8286</p> <p>ELAINE STORCK, DIRECTOR</p>
<p>ETTELMAN'S DISCONTINUED CHINA & CRYSTAL Cambridge a Specialty</p> <p>PO Box 6491-CB Corpus Christi TX 78466</p> <p>Phone 512-888-8391 Include S A S E</p>	<p>D & D ANTIQUES</p> <p>Columbus, Ohio</p> <p>Dick Slifko SHOWS ONLY</p>	<p>RONI SIONAKIDES</p> <p>6565 W Herbison Rd DeWitt, MI 48820</p> <p>517-669-5981</p> <p>Fostoria, Tiffin, Duncan, Cambridge</p>
<p>THE GLASS CUPBOARD</p> <p>P O Box 652 West End, North Carolina 27376</p> <p>Marcia Ellis Cambridge, Duncan, Heisey 910-673-2884 Shows, Mail Order</p>	<p>JUDY'S ANTIQUES Judy Bennett 422 S Ninth Street (Corner of Jefferson) Cambridge, Ohio 43725</p> <p>BUYING Ph 614-432-5855 SELLING</p> <p>CAMBRIDGE GLASS MY SPECIALTY</p>	<p>YOU CAN ADVERTISE YOUR ANTIQUÉ SHOP HERE!</p>
<p>FINDER'S ANTIQUE HOUSE New Home of Elegant Glassware 1169 Piney Forest Rd. Danville, VA 24540 (804) 836-6782 Cambridge-Heisey-Duncan-Fostoria</p>	<p>GREEN ACRES FARM</p> <p>2678 Hazelton Etna Rd., Pataskala, OH 43062 (State Route 310 North)</p> <p>Sat & Sun 1-7 PM 614-927-1882 Antiques, Crystal Glass and Collectibles</p>	<p>CRYSTAL LADY</p> <p>1817 Vinton St., Omaha, NE 68108</p> <p>Joann D. Hagerty</p> <p>Bus 402-341-0643 Res 402-391-6730 Specializing in Elegant Glass & Collectibles</p>
<p>ASK Specializing in Cambridge Wide variety</p> <p>Booth #14 in the Antique Mall of Boswell 90 miles south Chicago, right on U.S. 41 7 days a week 10-5, except Sun. 12-5 (317) 869-5525</p>	<p>FLORENCE SOLITO 54 Old Stafford Rd., Tolland CT 06084</p> <p>Stock All Elegant Glassware Mail Order Since 1978 Send Wants</p> <p>203-872-3294 Satisfaction Guaranteed</p>	<p>YOU CAN ADVERTISE YOUR ANTIQUÉ SHOP HERE!</p>
<p>MICHAEL KRUMME Cambridge*Heisey*Fostoria*Duncan*Miller*Paden City New Martinsville*Fenton*Tiffin*Imperial*Morgantown</p> <p>I search - Send detailed want list - all kept on file PO Box 5542 Santa Monica, CA 90409</p>	<p>YOU CAN ADVERTISE YOUR ANTIQUÉ SHOP HERE!</p>	<p>MARGARET LANE ANTIQUES</p> <p>2 E. Main St., New Concord, OH 43762 Lynn Welker 614-826-7414</p> <p>Cambridge Glass Matching Service Hours Mon-Fri 10-12 AM, 1-5 PM or by Appointment</p>
<p>GLASS RESTORATION</p> <p>BRILLIANT DON & LYNNE CRYSTAL WORMLAND ELEGANT MT. CLEMENS, MICH DEPRESSION 810-468-3519</p>	<p>ALADDIN LAMP BOOKS Free List Figurine Lamps Wanted Bill & Treva Courter 3935 Kelley Rd Kevil, KY 42053 Phone/FAX 502-488-2116</p>	<p>DEXTER CITY ANTIQUE MALL</p> <p>P. O. Box 70, Dexter City, Ohio 45727 (614) 783-5921</p> <p>Located on Ohio St. Rt. 821 Between Exits 16 & 25 off I-77 Just 30 min South of Cambridge, Ohio</p>

Great Northeast Depression Era Glass and Pottery Show

Westchester County Center, White Plains, N.Y.

August 10, 1996 10 a.m. to 5 p.m.

August 11, 1996 10 a.m. to 4 p.m.

Second great year! Already known as one of the finest depression glass and pottery shows in the nation. The nation's largest metropolitan area hosts a show of immense national caliber. Over 50 renowned dealers from around the country will bring the best merchandise. The widest variety, from A to Z to Elegant to China. The Rarest of the Rare.

Visit the National Cambridge Collectors booth at the show. Meet members, buy Cambridge books and favors on hand. This is a show that lived up to its word of mouth. This is not a show you will browse in an hour or two. Plan to spend the day. You will be delighted with the scope and quality of the merchandise. It's over 25,000 square feet!

White Plains is centrally located just 20 miles north of New York City. For directions, contact the County Center at 914-285-4050 or fax a request to 914-631-8278.

General Admission \$6.00. NCC members with their card or this ad, just \$5.00.

Quick, close your eyes. What's the best glass show in the country? Coming August 10-11.

National Cambridge Collectors Inc
PO Box 416
Cambridge OH 43725-0416

FIRST CLASS MAIL
U.S. POSTAGE
PAID
PERMIT NO. 1
CAMBRIDGE, OH

FIRST CLASS MAIL

Membership Renewal Notice

**If the date on your address label is 8-96,
this is your LAST ISSUE of the Crystal Ball.**

Please take a moment and renew now. Thank you!