



# Cambridge Crystal Ball

Published monthly by National Cambridge Collectors, Inc.  
to encourage and report the discovery of the elegant and boundless product of the  
Cambridge Glass Company of Cambridge, Ohio

Issue No. 268

August, 1995

## **CAMBRIDGE GLASS COLLECTORS CONVENTION**

By Lorraine Weinman

Hundreds of glass collectors from 23 states and Canada gathered this past weekend in Cambridge. It was an opportunity to share their interest and add wonderful new pieces to their collections.

This year's event, the 22nd annual National Cambridge Collectors' convention began on Thursday with a tour of the Dalzell-Viking factory. Later that morning, a golf outing was underway. Winning the golf tournament was Bill Hagerty, who received a 1940 catalog reprint and binder as his prize. That evening, NCC members attended a picnic in the park followed by entertainment by the Cambridge City Band.

Friday morning saw many members enjoying coffee and conversation at the NCC Museum followed by a tour of the Bennett Cambridge Glass Museum. That afternoon, Mark Nye, a noted author and expert on glass, presented a speech on Cambridge Glass of the 1930's. Colors, lines and etchings introduced and popular at that time were highlighted.

The 1930's saw the introduction of many of the popular lines such as Rose Point, Caprice, Wildflower, Candlelight and Chantilly. Slide programs about Cambridge colors and figurals were also presented.

The Antique Show and Sale opened its doors Friday afternoon and continued with hours until Sunday afternoon. This annual event sees anxious buyers

camping out early in the day to hold the prestigious places in line for the opening. First in line this year, with an arrival time of 9:30, were Ed and Alberta Dudley of Columbus. Six new dealers were added to the show's veteran dealers. According to several dealers, sales were really hot in nude stemmed items, Japonica, rare Rose Point items, ebony pieces with gold encrusting and rare pieces in general.

Following the Friday evening dinner, the mini-auction was held with Willard Kolb from St. Clairsville, Ohio persuading buyers to go even further in their bidding to purchase glass and items donated to be auctioned. This highly entertaining event saw \$5,555 raised to benefit the NCC Museum. A "created" Cambridge Glass piece (Mr. Bennett's Magic Lamp) reappeared this year and realized \$1,200, while a novelty empty wine bottle brought \$775 (through member donations of \$25/each). A quilted "Triangle C" wall hanging made by member Sarah Carpenter brought \$65 in the auction. A painting and prints by Paul White and Kathie Young were also among the prizes taken home that night.

A Cambridge notebook/datebook from the '30s which was given to employees realized \$400 and was then donated to the museum. The auction is a very popular and rousing evening event. Willard Kolb again did a fabulous job!

(continued on page 17)

# Cambridge CRYSTAL BALL

# ADVERTISING RATES

Official Publication of National Cambridge Collectors Inc., a non-profit corporation with tax exempt status. Published once a month for the benefit of its members. All rights reserved; reproduction in whole or in part without written permission of NCC and the author is prohibited.

Membership is available for individual members at \$17.00 per year and an additional \$3.00 for associate members (12 years of age and older, residing in the same household). Of the master member dues, \$12.00 is credited to a one-year subscription to The Crystal Ball. All members have voting rights, but only one Crystal Ball per household. Back issues of the CRYSTAL BALL are available for \$1.00 each or 12 issues for \$10.00.

## 1995-1996

### OFFICERS AND COMMITTEE CHAIRPERSONS

President.....	Richard D. Jones
Vice-President.....	Mark A. Nye
Secretary.....	Bud Walker
Treasurer.....	Charles Upton
Sergeant-at-Arms.....	Cynthia A. Arent
Acquisitions.....	Joe Andrecjak
Budget & Finance.....	Mark A. Nye
By-Laws.....	Charles Upton
Long-Range Planning.....	Rick Jones, Tarzan Deel Mike Arent
Membership.....	Jeff Ross
Museum Expansion/Relocation.....	Willard Kolb J.D. Hanes
Museum Facilities.....	Carl Beynon, Joe Miller
Museum Interior.....	J.D. Hanes
Non-Glass Items.....	Tarzan Deel
Nominating.....	Mark A. Nye
Program.....	Open
Projects.....	Tarzan Deel
Publications.....	Mark A. Nye
Publicity.....	Cynthia A. Arent
Study Group Advisor.....	Marybelle Moorehead
1995 Convention.....	Mark Nye
1995 Auction.....	Lynn M. Welker
1995 Antique Show.....	Mary Beth Hackett, Charles Upton
1995 Flea Market.....	Marybelle Moorehead
CRYSTAL BALL Editors.....	Rick Jones, Mark Nye
Managing Editor.....	J.D. Hanes

National Cambridge Collectors, Inc. owns and operates the **Museum of Cambridge Glass** at 9931 E. Pike Road Cambridge, Ohio. Open April through October 9AM-4PM Wednesday through Saturday and Noon-4pm on Sunday. March open Friday-Sunday. Closed November-February, Easter, July 4th.

### Display Rates (camera ready ads preferred)

<u>Unit</u>	<u>Members</u>	<u>Non-Members</u>
Full Page	\$45.00	\$60.00
3/4 page	\$35.00	\$50.00
1/2 page	\$25.00	\$35.00
1/4 page	\$15.00	\$25.00
1/8 page	\$10.00	\$15.00

### Classified Rates

10 cents a word \$2.00 minimum

Abbreviations and initials count as words. Type sizes cannot be mixed in classified ads. Payment in full must accompany all ad copy. Contact Editor for copy assistance

### Dealer Directory

Six Line Maximum \$24.00 for 12 month contract

Cambridge CRYSTAL BALL assumes no responsibility for items advertised and will not be responsible for errors in price, description, or other information.

**Advertising copy, letters, articles, must be received by the 5th of preceding month to be considered for publication in the next issue.**

Please address all correspondence (include SASE) to:

**National Cambridge Collectors, Inc.  
P.O. Box 416, Cambridge, Ohio, 43725-0416**

President/Co-Editor Rick Jones:	914-631-1656
VP/Co-Editor Mark Nye	517-592-6200
Secretary Bud Walker	609-965-2413
NCC Museum, Phone and Fax	614-432-4245

**Please notify us immediately of any address change.**

Opinions or information stated in any signed article or letter printed in the CRYSTAL BALL are those of the author and may not agree with National Cambridge Collectors, Inc. The Editor reserves the right to refuse and to edit any material submitted for publication to conform to the editorial style of the CRYSTAL BALL. Members are encouraged to write to NCC and the Crystal Ball sharing their knowledge and questions!

## **FOLLOW-UP TO MR. BENNETT'S MAGIC LAMP AND OTHER THOUGHTS**

**By Bud Walker**

The 1995 Cambridge Glass Convention is now history. To those who could not attend, you missed the best convention ever. The quality of glass at the show and flea market was outstanding. There was something for everyone.

Thanks to the effort of our auctioneer, Willard Kolb, and a group of Cambridge lovers, I am no longer the owner of Mr. Bennett's lamp. It was purchased by a group of Cambridge Glass lovers who donated the piece and \$1,200.00 to the museum, where it will spend the next year. From all of the beautiful pieces that were donated at the convention, it's apparent that the lamp is going to have the same effect on the museum collection. If you have been thinking of donating funds or a piece from your collection, this is the year to act. I'm sure Mr. Bennett's little lamp will reward those who remember the museum, which is dedicated to preserving the glass that he and his boys made.

In closing, I would like to thank all of those who helped make our convention a success. To those who helped me at the flea market, I want to say thanks; without you we could never have pulled it off. I have learned not to name names, if you do you will usually forget someone, but you all know who you are. I look forward to helping next year's chairperson, Mike Arent. I hope I can help him as much as he and Cindy helped me.

---

## **CONVENTION OPEN HOUSE AT DEXTER CITY ANTIQUE MALL**

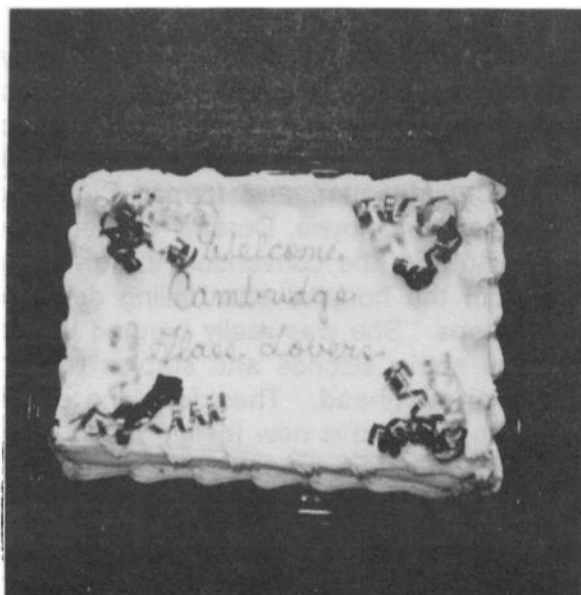
**By Bud Walker**

The visitors to this year's convention who took the time to visit the Dexter City Antique Mall's open house on Friday June 23, were in for a real treat.

As you can see by the photograph, the mall went all out to welcome the conventioners. In addition to the beautiful cake, there was punch, coffee, cookies and candy. While we were there, dealers kept bringing in more and more delicious food.

In addition to all the food, most of the dealers were present. This meant that tight fisted collectors like Willard Kolb and myself could negotiate for the best deal possible. Yours truly ended up with a large Bashful Charlotte in frosted Peach Blo. In addition to the flower frog, I found a beautiful Steuben crystal vase. To make my trip complete one of the dealers had a piece of the airship Shenandoah which crashed in Ava, Ohio on September 3, 1925. To an avid airship memorabilia collector, this was quite a find.

Needless to say I was so glad we made the trip, and would like to thank all of those at the mall, who made us feel so welcome. It's this kind of treatment that makes my visits to Ohio so pleasurable.



---

## **1995 ELECTION RESULTS**

At the Convention's Friday night dinner Membership Chairperson Jeff Ross announced the results of the 1995 Board of Directors election: the three current Board members: Jeffery D. Hanes, Bud Walker, and Lynn Welker, were all reelected.

After the Annual Meeting of the membership on Sunday morning, the Board of Directors met to elect officers for 1995/1996 terms. The new officers are: President: Rick Jones, Vice-President: Mark Nye, Secretary: Bud Walker, Treasurer: Charles Upton

The next Board meeting will be held Friday night August 25th at 6 p.m. at the NCC Museum and is open to all members.



## Museum Moments

# ***Despite "Murphy", The Convention's a Big Hit***

By J.D. Hanes

Beautiful! Wonderful! Outstanding! The best one ever! These are just some of the comments I heard about this year's Glass Show and Sale at the convention. For those of you who did not get to attend, you really missed something special. A great round of applause and thanks need to go to the show co-chairpersons, Mary Beth Hackett and Charles Upton, and to all of the dealers in the show that brought all of these outstanding items. Thanks also must go to Mark Nye for the convention activities, which get better every year.

As Mark and I say sometimes Murphy, of "Murphy's Law", always appears. It's either that or a ghost from the Shenandoah Inn. Murphy hit me a couple of times this year. The first was when my relief worker for the Museum, and former Cambridge Glass Company employee, Dorothy Golden called me on Thursday of the convention. She had just returned from the hospital after falling down her basement steps. She was really banged up, and had to have some stitches and staples put in a severe cut on her head. Thankfully she did not break any bones, and is now feeling much better. The Board of Directors modified the hours of the museum for the weekend so I could attend some of the functions, and I greatly appreciate that.

The second time that "Murphy" hit was when we were checking in the glass donations from the convention. One of the receipts is missing. If you are the one who donated a #1066 cocktail in Mandarin Gold and/or a #3121 tall Sherbet in Crystal, etched Rose Point, please drop a line to the post office box or call me at the museum. We have searched everywhere for the receipt and cannot find it. I know that "Murphy" must have it in his pocket!

Now on to other things to share with you. The Friday night Mini-Auction or "pocket picking" lead by our faithful friend and "auctioneer" Willard Kolb was great. We had many nice items and raised \$5,555.00 for your Museum Fund. Those who donated items for the mini-auction in random order were: Rick & Cindy Jones; James & Rose Curnutt; Roy & Doris Isaacs; Tarzan Deel; Frank Maloney; George Fogg; Mr. & Mrs. Floyd Hoffman; Mike &

Cindy Arent; Clarke & Carole West; Ed & Diane Chamberlain; Willard Kolb; Dick Storck; Shirley Ladouceur; Anonymous; Priscilla Southworth; Eloise Lytle; Sarah Carpenter; Joanne Paul; Paul White; James & Rita VanSkiver; Bud & Anna Walker; Lynne Verbsky; Kathie Young; Joyce & W.T. Dawson; Dan Miecznikowski; Walt & Mary Kreitling; Linda Roberts; Joy McFadden; Dorothy Springer; Fred Lovejoy; Bob & Marcia Ellis; Mark Nye; Mrs. George Stone; Frank & Elva Brodnick; Kelvin Moore; the Auction Committee; the Museum Interior Committee; and the Non-Glass Items Committee. We had a total of 69 lots. Many of these were fun type items and added to the evening's enjoyment.

Of course, we need buyers and bidders to make the mini-auction successful. The successful buyers were: Beverly Hanson; Willard Kolb; Bud Walker; Anna Walker; Roy & Doris Isaacs; Joyce Dawson; James & Rose Curnutt; Dale Snode; Mark Nye; J.D. Hanes; Rick & Cindy Jones; Lynne Verbsky; Marcy Allenbaugh; Joy McFadden; Judy Momirov; Bill Hagerty; Sharon Miller; Ed & Diane Chamberlain; Tarzan Deel; Paul White; Cindy Arent; Mary Martha Mitchell; Lindy Thaxton; Gwen Cortese; Sarah Carpenter; Carl & Shirley Beynon; Elaine Storck; Charles Upton; Bill & Joanne Carle; Kathie Young; Bonnie Stevens; Alexandra (Sandy) O'Donnell; Kathryn Hetherwick; Eloise Lytle; Janet Hector; Marilyn Borresen; Gerald Burske; Sharon & Kelvin Moore; Jim & Sandy Buffenbarger; Clarke & Carole West; Fred Schaefer; Jeff Ross; and Don & Lynne Wormland. We thank all of you for supporting your museum and its mission, whether or not you were successful in buying an item. You are all wonderful people.

We received many nice donations at the convention for the museum. First, I will list items that were donated to the museum from the people who bought them at the mini-auction.

From *Lynne Verbsky* a #3776 goblet in Crystal etched Candlelight.

From *Jim & Sandy Buffenbarger* a shot glass in Amber.

From *Bill Hagerty and Roy & Doris Isaacs* a Cambridge Glass Company notebook/datebook from 1946, that was given to employees of the factory.

From *Willard Kolb and Bill Hagerty and Roy & Doris Isaacs and Ed & Diane Chamberlain and Bud & Anna Walker* the A.J. Bennett "See into the future lamp".

From *Roy & Doris Isaacs* a #4000/67 Cascade 5" candlestick in Crystal.

Next listed are donations received during the week of the convention and over that weekend:

From *James & Rita VanSiver* a #3797 Cambridge Square Sherbet made by Imperial with an Amber bowl, and Crystal base; a #1955 tumbler in Pistachio Crackle; #3112 Sherbet in Crystal etched Ye-Olde-Ivy; and a #3112 Goblet in Crystal etched Ye-Olde-Ivy

From *Lynn Welker* a #W54 32 oz. jug in Milk Glass.

From *James & Rose Curnutt* a #1402/95 Tally-Ho Twin Salad Dressing Bowl in Crystal, with a grey cut vegetable decoration.

From *Cliff & Lydia McNeil* a #1400 Martha Washington 10 oz. goblet in Amber, etched Grapes.

From *John Parr* a #1402/3 Tally-Ho 10 oz. goblet in Crystal with red and black enamel decoration D/1007; a #1402/22 7" tea plate with red and black enamel decoration D/1007; and a #3109 6 oz. hollow stem Champagne in Crystal, etched Rose Point.

From *Kelvin Moore* a Regency cocktail with an unusual green bowl and Crystal stem and foot; #3700 5 oz. footed tumbler in Crystal with a sample room label; #3121 6 oz. sherbet in Crystal, etched Wildflower with a sample room label; #2760 Nearcut Daisy Arch Foot cup in Crystal, signed; #400 12 oz. ball bottom tumbler, in Crystal; #3775 Claret in Crystal, etched Chantilly; #1066 parfait with a Carmen bowl and Crystal stem and foot; and a German porcelain flower frog that appears to be a miniature of the Cambridge Draped Lady.

From *Milbra Long & Emily Seate* a Pristine #245 6 piece condiment set in Crystal.

From *Bill Hagerty* a #3900/22 8" salad plate in Crystal, etched Rose Point, made by Imperial with Imperial labels.

From *Doris & Roy Isaacs* a #173 12" center handled sandwich tray in Avocado; #3122 sherbet in Crystal with Platinum trim; #7606 tall tumbler in Crystal, etched Marjorie; #3121 sherbet in Crystal with an unidentified cutting; #2972 Nearcut bottle/candlestick in Crystal; #1402/10 Tally-Ho cocktail in Forest Green; and a Mt. Vernon electric lamp in Crystal.

From *Tarzan Deel* a #2800 Community 11" X 8 1/2" dresser tray in Ivory.

From *Beverly Hanson* a notebook/datebook that the Cambridge Glass Company gave to employees and customers.

From *Ed & Diane Chamberlain* 4 of #300 2 1/2 oz. sherrys, one each of Pink, Pistachio, LaRosa and Amethyst.

From *Charles & Loretta Weeks* a #3550/124 Caprice 8 1/2" 3 part celery and relish in Moonlight Blue with a sterling silver overlay decoration.

From *Ginny & Bob Marotto* a #3400/100 76 oz. ice lipped jug in Crystal, frosted all over with a sterling silver overlay decoration.

From *Richard & Anne Kinsell* a #1042 6" swan in Mandarin Gold; #3400/38 80 oz. ball jug in Forest Green; Mt. Vernon #52 40 oz. decanter and stopper in Crystal; and six Mt. Vernon 3 oz. tumblers in Crystal.

From *Beverly Ales* a #2631 Nearcut Marjorie knife rest, in Crystal.

From *Dale & Doris Shepherd* a #1355 2 light candlestick in Crystal with the Alpine decoration; and a Caprice book that has been done in a hard back cover.

From *Joe Andrejczak* a #1322 26 oz. decanter in Crystal.

From *Frank & Phyllis Hayes* a #3790 Simplicity Ice Tea in Crystal, cut Lily of the Valley; #7966 sherbet in Crystal, cut Flame; and a #1957 Sonata sherbet in Crystal.

From *Mary & Walt Kreitling* a #867 Decagon cream and sugar in Willow Blue etched #738.

From *Pam Earussi* a #385 8 1/2" 3 part relish in Amber etched Cleo.

From *Ed & Alberta Dudley* a set of photograph reproductions that were taken at the Cambridge Glass factory in 1949.

From *Elaine Storck* a #95 1 pound candy jar and cover in Azurite; a Virginian ashtray in Crystal; #1401 Goblet in Forest Green; #3500 sherbet, optic, in Crystal; #317 5 oz. Georgian tumbler in Forest Green; a Moonlight Blue coaster in a Farber chrome holder; #883 ashtray in Willow Blue.

From *Roy & Cynthia Ash* a #2651 Feather Nearcut cruet in Crystal, signed.

From *Bud & Anna Walker* a #3400/54 cup and saucer in Crystal with an unidentified cutting and a #3400/60 6" bread and butter plate with the same cutting.

From *Joy McFadden* a 13" Peach Blo platter gold encrusted etch floral pattern with a 22 karat gold label and signed and a #3121 low footed comport in Crystal, etched Rose Point.

From *Brooke Allen* in memory of Mike & Susan Allen a pair of #69 7 1/2" candlesticks in Helio and a #45 Special Article 9 1/2" low footed comport with gold decorated edge.

From *B.J. Kersey* in loving memory of his wife Jane Kersey a #7606 2 piece canape set in Crystal etched Marjorie.

From *W.T. and Joyce Dawson* in memory of Lyle Welker a #274 bud vase in Ebony with white gold encrusted Gloria etch and a #388 4" ashtray in Amber etched Lorna.

From *W.T. and Joyce Dawson* in memory of Doyle Hanes a Sea Shell #31 8" oval dish in Crown Tuscan with the Charleton "Blue Mist" decoration.

From *Priscilla Southworth* in memory of Doyle Hanes a #3121 goblet with a Crystal bowl and Forest Green stem and foot.

From *Bob & Marcia Ellis* in memory of Doyle

Hanes, a monetary donation.

From *J.D. Hanes* in memory of his dad, Doyle Hanes, a #3200 Cut Wild Rose Punch Bowl and Base in Carmen.

We want to thank all of you for these wonderful donations. These greatly enhance the displays of your museum. I think that A.J. Bennett's lamp is already working for the museum!

Also during the weekend, the Acquisitions Committee under the fine leadership of Joe Andrejcek, purchased the following items for the museum: #1402 Tally-Ho goblet in Royal Blue with a sterling silver overlay decoration; a pair of #628 candlesticks in Crown Tuscan; #3143 goblet, tall sherbet and iced tea in Gyro Optic, Crystal; #3400/16 6 oz. footed creamer in Light Emerald etch Apple Blossom with enamel in the "medallion" part of the etching; #487 12" oval cheese and cracker in Amber with a gold encrusted unidentified etching; #2631 Nearcut Marjorie punch bowl in Ebony with a Crystal base; #2630 Nearcut Daisy arch foot large punch bowl, base and 12 cups; #3011 Nude stem goblet, with a Forest Green Bowl, Crystal stem and foot with gold trim on the bowl and foot; a pair of Doric Column candlesticks in Ebony; a 9" footed Ram's Head bowl in Ebony; #62 comport in Primrose; #1338 3 light candlestick in Crystal with an unidentified cutting on the base and a #3015 goblet in Peach Blo etched Lorna.

Also I need to thank Lynn Welker, Joy McFadden and Jeff Ross for all of their help on organizing the donations, writing the receipts and making sure that all items were wrapped and put in boxes. I don't know what I would do without you! And, of special note, is all the work by Sarah Carpenter the week in advance of convention. Thanks!

Referring back to the beginning of this article and things not going as planned, another one of these would be the great response that we had to the special sale of the Crystal Ball back issues. Response to this sale was greater than expected and we wanted to have some extra sets for sale at the club table in the glass show. On Thursday, we realized that we were not as far ahead as we thought on these. So a work group formed on Thursday afternoon to finish these sets.

(continued on page 12)



## President's Message

# Setting a New Agenda for Growth

I am very pleased to be writing to you this month as the new President of our club. We should all thank Joy McFadden for her tremendous service as President for the last several years. We have a much stronger and healthier club as a result of all of her efforts.

I feel a little like a second generation member of National Cambridge Collectors Inc. My wife Cindy and I joined N.C.C. in the mid-1980's. She had started as a Caprice collector in 1979, but it wasn't until six years later that we learned there was a national organization. After we were married in 1982, we mostly shopped antique shows and stores searching for this crystal pattern *she* collected. In 1985 or 1986 on a visit to Ohio to see family, we happened upon Judy's Antiques and then, Margaret Lane Antiques. I was awestruck by the beauty and quantity of Caprice there was available. At that point, the "bug" got me and I've been "diseased" ever since. I've called the building of what is now "our" collection, an adult treasure hunt.

We will be forever indebted to the late John McNabb for kicking our collection into hyper-gear. He shared with us a numerological guide to Caprice that he and Lenora had painstakingly created over many years of pouring over catalog pages. This was well in advance of the Club publishing the Caprice book last year.

I've learned that collecting is tremendous fun and a great stress reliever. Five years ago, I was working at Reader's Digest when McKinsey came through with a corporate reorganization. On one fateful day, 28% of the staff was laid off. Fortunately, I was not one of them. The stress, however, was ungodly. What got me through, was escaping into my world of Cambridge. I'd work on the collection and dream of what "hole" I could fill in next. It was a passion and an escape that helped through trying times.

Also critical to my enjoyment has been the focus on learning and preservation. The educational role that N.C.C. plays is of enormous value to all collectors. Also, as Jim Finley reminded me of at Convention, many of us have major *investments* in our collections. Our Club's preservation and promotion roles help secure these assets. That is an

enormous trust the membership places in the Board of Directors and the officers of NCC.

So, as I look at the next year, here are some of my priorities:

We must continue to build our financial security. Our leadership has to be open and inclusive about how our money is raised and spent. Meeting the operating needs of our Museum is always a challenge. Member participation over and above dues are critical to keeping this important facility open, operating, and growing.

We need a realistic plan for Museum Expansion and Relocation. What do we need long-term? What is it going to cost and what are our fund-raising plans? Should we have an Endowment Fund and a plan for wills and bequests? How can we all remember the enjoyment Cambridge has given us?

We need to retain our first year members at a greater rate than we currently do. This entails building a better understanding of why people do not renew their memberships. Our excellent Membership Chairperson, Jeff Ross, is committed to growing and maintaining our membership.

We must keep J.D. Hanes. He is a phenomenal asset to this club. He is dedicated and a pleasure to work with. For him, NCC is both a job and a passion. Let's make sure its a *good* job that allows him to meet his life needs.

We need an even larger volunteer network. Our Board and a circle of members does a tremendous amount of unheralded work. I envision a Club that is even more inclusive. If you volunteer to help, trust me, we will find something productive you can do to lend a hand.

The agenda is a bold one and cannot succeed without *your* help. With your support, we will get even stronger and build on our promise to preserve and promote Cambridge Glass. Please drop me a note with your thoughts. It's your club, please let your voice be heard.

*Rick*

# **CONVENTION 1995**

**By Convention Chairperson**

**Mark Nye**

Convention 1995 has passed into history. After months of planning and preparation, the convention itself passes so quickly that it hardly seems right. A full report on convention activities appears elsewhere in this issue.

This year we had 203 registrants from 23 states coast to coast. It is always a pleasure to welcome first time attendees, members and guests of members, and this June that welcome was extended to 38 individuals: Beverly Ales; Jim and Rae Ann Bergman; Ron and Eileen Borem; Jerry, Tom and Tracy Burske, John Corl, Zeke and Eve Cunningham; Jane Fagg, George and Jo Foglesong; Fleur De Ly Healy; Don and Diane LaTourette, Dr. Michael Mastel; Nancy Misel; Sharon McNeil; John Parr; Ramona Reed; George and Bev Stamper; Donald and Bonnie Stevens; Harold and Ann Stoetzer; Sharen Theis; Robert and Barbara Trebilcock; Bart, Bill and C.L. Wales; Patti Buenting Walsh; Doddie Williams; Michael Wyse; Michael Young.

The winner of the early registration drawing was Marcy Allenbaugh. Her prize was a 3015 goblet, etched Lorna, donated by the Convention Chair. The banquet door prize, a W.54 Milk Glass jug, was won by Lynn Welker who donated it to the Museum. On Sunday morning, a Tally Ho sugar etched Elaine went to one of our caterer's waitresses.

The 1995 convention souvenir is a Cascade goblet produced in a color named Cranberry Ice by its maker Mosser Glass and engraved NCC 1995. A limited number of these goblets are available at \$5.00 each plus \$3.00 shipping and handling. The 1995 Convention Souvenir Booklet is also available for purchase, the price being \$5.00 which includes postage and handling.

My thanks go to all who assisted me in making the 1995 convention a successful one with a special thanks to J. D. Hanes who is constantly oiling the wheels to keep things going. Last but not least a big thank you goes to the 203 people who attended the convention. Without you, there would not be a convention.

Watch this space in the coming months for announcements about the 1996 Convention.

## ***What Ho! Stimulators***

**By Mark Nye**

In keeping with the theme of the recently concluded 1995 convention, the following is taken from the December 1931 issue of CHINA, GLASS AND LAMPS.

"Much ingenuity in decoration has been used by American glassware manufacturers in endeavoring to aid stimulation of trade. Fourteen ounce tumblers have been very popular in homes, clubs, and gathering places and the seven-ounce tumbler with the heavy bottom also has had a variety of uses.

As its contribution to those occasions of more or less popularity, the Cambridge Glass Co., Cambridge, Ohio, has worked out an extensive line of decorations on its seven and fourteen ounce tumblers. Five of the decorations are illustrated. These are applied to the two sizes of tumblers and come in a choice of color combinations on crystal glass.

The designs are applied by a special process and will not come off. The 14-ounce tumbler to the left, is one in red and black and is quite expressive. The dog on the first seven-ounce tumbler is in black and the lines are in red and blue. The feathered animal motif in the center has wording in black with lines in green. The smaller tumbler with the title 'Three Canny Scots' is done in black decoration. The polo motif is in green with parallel bands of red below.

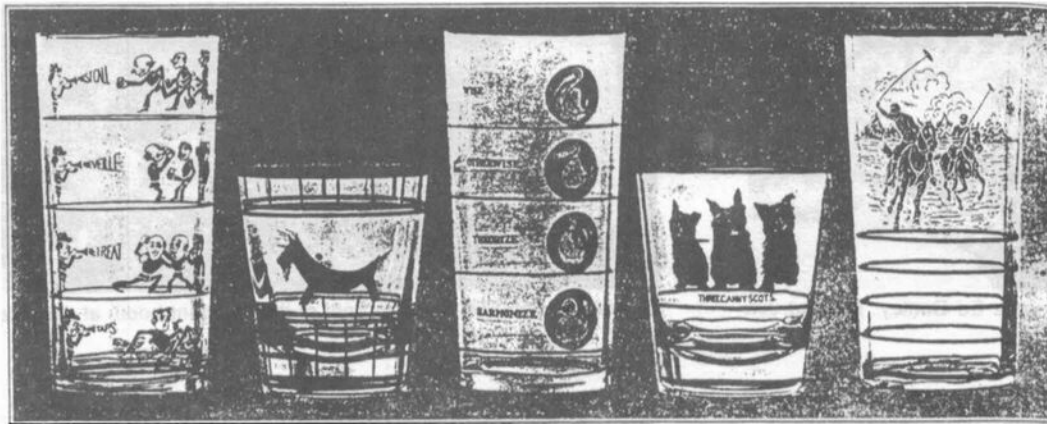
These are only a few of the items in this line made by the Cambridge Glass Co. in their new decorating process. Others are quite as interesting."

The items described in the preceding and seen in the illustration taken from CGL appeared, with a number of others, on a 1931 supplemental catalog page captioned "Sport Novelties."

The opposite page features a copy of the reprint that promotes Sports Novelties to the trade...



## What Ho! Stimulators!



MUCH ingenuity in decoration has been used by American glassware manufacturers in endeavoring to aid stimulation of trade. Fourteen ounce tumblers have been very popular in homes, clubs and gathering places and the seven-ounce tumbler with the heavy bottom also has had a variety of uses.

As its contribution to those occasions of more or less popularity, the Cambridge Glass Co., Cambridge, Ohio, has worked out an extensive line of decorations on its seven and 14-ounce tumblers. Five of the decorations are illustrated. These are applied to the two sizes of tumblers and come in a choice of color combinations on crystal glass.

The designs are applied by a special process and will not come off. The 14-ounce tumbler to the left, is done in red and black and is quite expressive. The dog on the first seven-ounce tumbler is in black and the lines are in red and blue. The feathered animal motif in the center has wording in black with lines in green. The smaller tumbler with the title "Three Canny Scots" is done in black decoration. The polo motif is in green with parallel bands of red below.

These are only a few of the items in this line made by the Cambridge Glass Co. in their new decorating process. Others are quite as interesting.

men customers come in for the express purpose of buying, they tell you what they want, buy it and leave, without any waste of time. Why—"

At this point Marian's knowing laugh interrupted Anne's little speech. "Don't you think," she inquired, "that you might be a bit prejudiced in favor of men, just now?"

"Why should I be?" But as she asked the question, Anne was too busy gathering up her purse, gloves and luncheon check to look directly at Marian. And Marian answered the question with another.

"How's the boy friend from New York, these days?"

"Now, Marian, you know he's no 'boy friend.' He—I suppose you mean the china salesman, don't you?"

"You know very well that's who I mean. Don't try to pull the wool over the eyes of an old married woman like me. When you begin to dodge questions like that, I know that something's in the wind."

"I've got to run, honestly, Marian." Anne said rising hastily. Then her eyes met Marian's and she laughed self-consciously. "There ought to be a letter from him waiting for me at the store."

TO BE CONTINUED

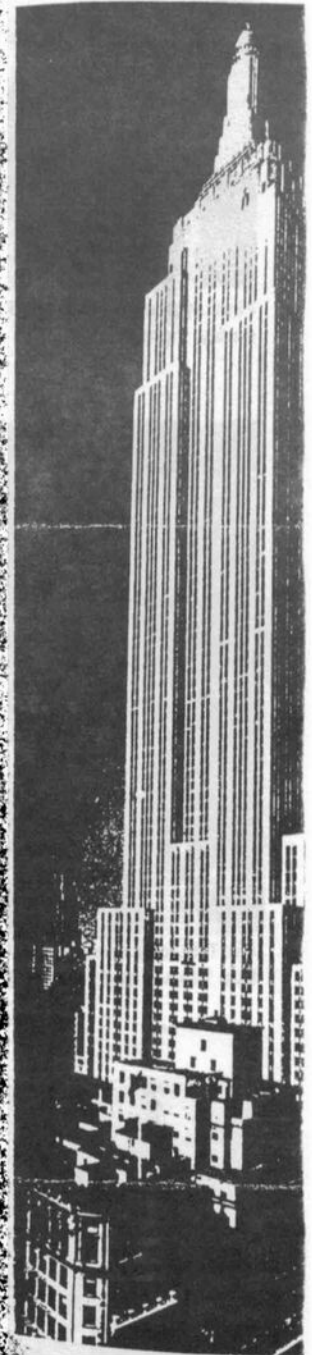
### GEO. L. DAVIS CO. HAS LEADING LINES IN GLASS AND POTTERY TO REPRESENT

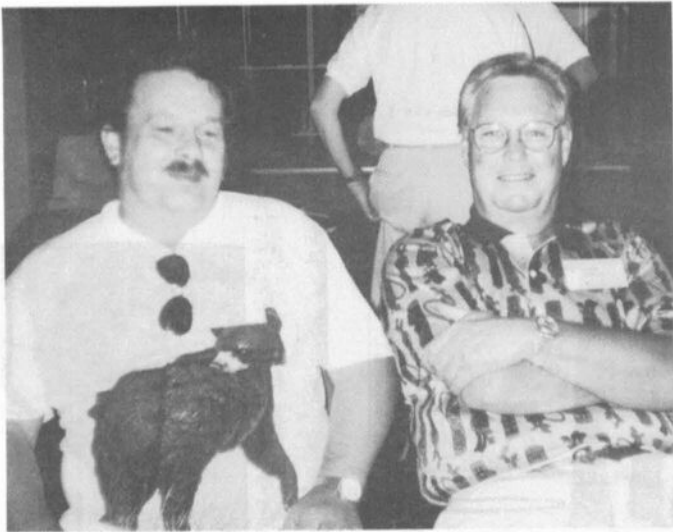
After a recent trip to New York, George L. Davis, of Minneapolis, announced that he would continue the Geo. L. Davis Co. as manufacturers' agent in his territory for leading lines. Mr. Davis for more than 30 years has been representing factories in the Northwestern territory. His headquarters will continue to be in Minneapolis.

The lines to be represented by Mr. Davis include A. H. Heisey & Co., glassware; Roseville Pottery Co., art pottery; Homer Laughlin China Co., dinnerware; Harper I. Ransburg Co., decorated glass; Earl W. Newton Co., rock crystal; Mutual China Co., importers, and others.

### CHINAWARE PLANT FOR EAST LIVERPOOL

The seven-kiln pottery in East Liverpool formerly operated by the Smith-Phillips China Co. has been sold by the American Chinaware Corp's receiver to F. H. Johnson, of Summitville, Ohio. Mr. Johnson is associated with John I. Bahl and plans to produce high grade china dinnerware. Mr. Bahl is an experienced ceramist and has been connected with several china potteries. Experimental work will be started at once.





First in line for the 1995 glass show were Ed Dudley, left and Jim Finley, right.



Marcia and Bob Ellis stand in front of their elegant booth at the glass show.



Our fabulous auctioneer Willard Kolb (center) is surrounded by helpers Bud Walker and George Fogg at the mini-auction Friday evening.



Sharon Moore with her classy booth at the glass show.



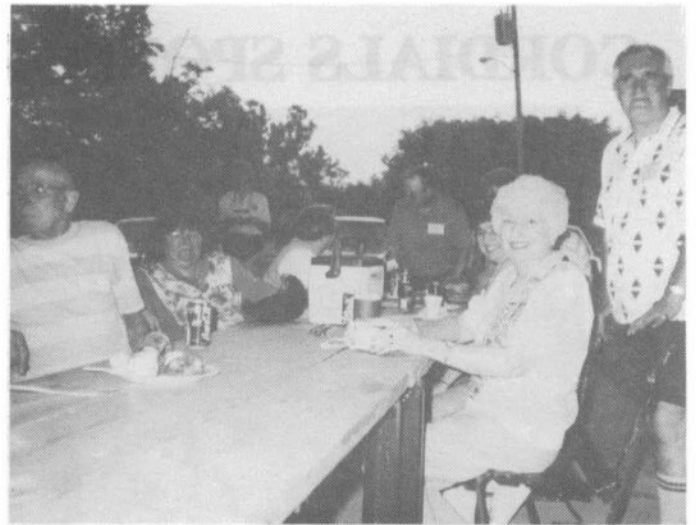
Lynn Welker with a very rare Rubina punch bowl at the "Bring and Brag" session on Saturday.



Georgia and Mac Otten watch their booth during the Saturday morning flea market.



Mark Nye (left) talks to the audience at the Thursday evening band concert. Cambridge City Band director and NCC member Berk Jones (right) did a wonderful job!



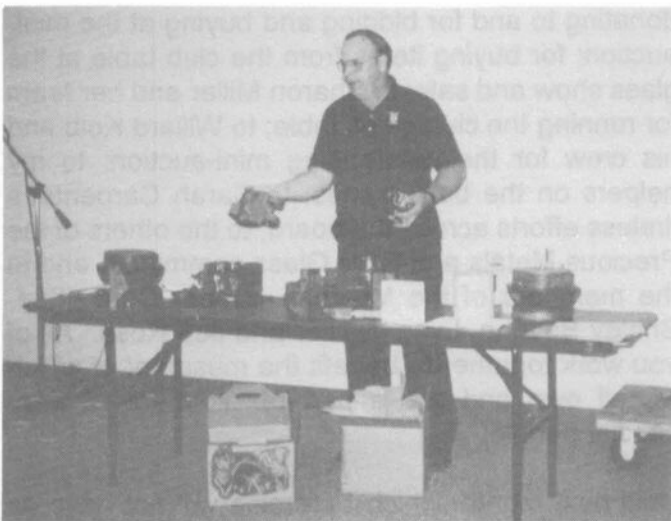
Mac Otten, Judy Rhoads, Beverley Hanson, Mark Nye and others enjoy the Thursday evening concert.



Former Cambridge Glass employee Shirley Bonnell (right) and her guest enjoy looking at the display in the booth of Florence Solito.



Club sales table chairperson Sharon Miller totals her brisk sales on Sunday afternoon.



Program on mould making Saturday afternoon.



Left to right, Gwen Cortese, Mary Martha Mitchell and Beverley Hanson enjoy convention activities.



# CORDIALS SPONSOR WORKER'S REUNION



Former employees of The Cambridge Glass Co. reunited on Sunday afternoon to share memories during the annual National Cambridge Collectors' Show and Sale at the Pritchard Laughlin Civic Center.

Pictured are, front row l to r, Edna Stevens Nicholson, Margaret Griffith, Mildred Bowman, Mary Wiggington, Mabel Burris, Betty Frontz, Edna Powell, Gwen Cortese, Paul O'Malley, Effie Tucker Tom, Helen Hosko, Margaret Sowinski and Minnie Johns; middle row, Ed Lehotay, John Krak, Harold Conrath, Maxine Shaffer Weisenstine, Clyde Shaffer, Velva Vandenberg, Mary Martha Mitchell, Elva Voltz, Wilma Headley, Jeannie Selock, Audrey Bonnell Mc Dowell, Vada Wilson, Shirley Bonnell, Fern Lengen, Alice Howell and Kenneth Giesey; back row, Mary Benedick, Donald Frontz, Raymond Slifko, Billy Frost, Leroy Conrath, Ralph Whitis, Bob Selock, Faye Bonnell Culbertson, Harriet "Sis" Cantor, Ralph Cramblett, James Boyd, and Bill Boyd. Present but not pictured: Richard Long, Daisy Moffatt Hagan, Mabel Proctor Williams, Pauline Tickhill, and Dorothy Mc Farland.

---

## MUSEUM MOMENTS (from page 6)

I really have to thank Clarke West, Tarzan Deel, Rick Jones, Cindy Jones and Jeff Ross for their help on these. While others were having the "Picnic with the Band in the Park", we were having "Pizza with Cambridge" at the museum putting these sets together. It was a lot of work and these are very dedicated people. But I won't lie to you, we also had fun doing these sets, however, by 11:30 PM we were getting a little silly. Also Jeff and I realized that we had to be back at the museum at 7:30 AM to prepare for the "Coffee with Cambridge" on Friday morning. Anyway, a different way to spend part of the convention!

In closing I want to again thank: all of you for your

donations to the museum during the weekend; for donating to and for bidding and buying at the mini-auction; for buying items from the club table at the glass show and sale; to Sharon Miller and her team for running the club sales table; to Willard Kolb and his crew for the outstanding mini-auction; to my helpers on the back issues; to Sarah Carpenter's tireless efforts across the board; to the others of the Precious Metals and Rare Glass committee; and to the members of the Museum Interior Committee, Shirley Beynon, Lynn Welker and Jeff Ross. All of you work together to benefit the museum, of which we all own and are a part of. You are all very special people.

Until next month, which I promise will not have as long of an article as this, Happy Cambridge Hunting!

---

# NATIONAL STUDY GROUP REPORTS

---

## **The Cambridge Nudes Study Group #11**

Eleven Nudes mustered for a short meeting between "Bring and Brag" and the Convention Annual Banquet sessions at the Pritchard Laughlin Civic Center in Cambridge. A short discussion was held on what help the Nudes might be able to provide to the Miami Valley Study Group in their current work on producing a publication on Cambridge etchings. Also it was the consensus of opinion that this year's Show and Sale collectively was the best that any of us had had the opportunity to attend.

Following the short meeting a hurried session of show and tell was held, with the following items being in evidence: #3400/94 3 1/2" Gold Krystol puff box etch Apple Blossom; Blue Bell gold decorated powder box etched #704; #1066 6 oz. cafe parfait, Carmen bowl, Crystal stem and foot; #9403 14 oz. Crystal tumbler with black and yellow Polo decoration (D983); #305 Crystal Pristine candy box and cover, gold decorated; #81 Royal Blue Martha Washington 8" footed comport with sterling overlay; Azurite 2 1/2" top hat with "#66 F&AM 1822-1922 Cambridge" on the brim; #3075 Peach Blo 9 oz. goblet, gold encrusted etch #718-Imperial Hunt Scene, with platinum banding decoration; #3104 Royal Blue/Crystal sherbet; Cobalt II barrel tumbler from the #1 keg set; #3500/27 Ivory 8" Ram's Head bowl; #3011/5 Crystal (optic) nude stem Hoch etched Vichy; two #7606 Crystal 9 oz. goblets, etched Marjorie; 6 Regency cordials in the following colored bowls over Crystal stems - Pistachio, Mocha, Gold Krystol, Amethyst, Moonlight and Tahoe; Three #7966 Amethyst sherries; #842 12" Light Emerald Decagon bowl, etched #738, signed; #1070 36 oz. Light Emerald pinch decanter with Art Deco sterling overlay and unknown cutting; #SS46 7 1/2" shell flower holder in Crown Tuscan with Charleton decoration; #23 12 1/2" Crystal Martha Washington plate with sterling overlay; #3060 9 oz. goblet with Gold Band etched #704; #691/7606 2-piece Crystal Canape Set etched Marjorie; Westmoreland crystal cologne bottle with stopper

with gold encrusted Roseate etching by Lotus; Morgantown 5 oz. Crystal tumbler etched Sunrise Medallion (#758) with red and black enamel bands at the rim; Fostoria #6017 Crystal cordial (Sceptre Stem) with Cynthia cutting; Fostoria #5099 Topaz/Crystal cordial; Fostoria #835 Jenny Lind blown 13 oz. Milk Glass tumbler; Dorflinger Crystal 7 oz. goblet champagne triple etched Kalana Poppy; Wilhelm Kralik Crystal 8 oz. goblet decorated with gold with orange highlights enameling; Crystal 12 oz. pilsner beer glass with multicolored duck enameled decoration of undetermined origin.

- **B. J. Kersey**

\*\*\*\*\*

## **Elegant Glass Collectors - Mid-Atlantic Study Group #16**

Our meeting on June 22, 1995 was after the picnic and band concert at the Cambridge City Park during the Convention. The meeting was held in Ed and Diane Chamberlain's room at the Deer Creek Motel. We had five members and three guests present.

The meeting was mainly a "get together" to renew friendships; discuss activities planned for the Convention, such as Anna Walker arranging flowers for the banquet centerpieces, and helping Bud and Anna Walker with the Flea Market; and other items.

Show and Tell consisted of purchases made in the area. Items included: an experimental color of a Sea Shell line plate; a Marigold flashing on a Gold Krystol Heirloom footed sugar; and a lovely rock crystal cut cup and saucer in the #3400 line which is to go to the Museum.

- **Pam Earussi**

---

## **QUARTERLY MEETING - August 26**

The annual picnic will start at 12 noon. Interested members are asked to help at 10 am with a cleanup session in the Storage Building. Please help NCC!

## CAMBRIDGE GLASS BOOKS FOR SALE

*By National Cambridge Collectors, Inc.*

### **Colors in Cambridge Glass**

128 pages, 60 color plates, fully indexed, Hardbound with price guide \$19.95

### **1930-1934 Cambridge Glass Company Catalog**

#### **Reprint**

250 page reprint of original catalog, Paperback with price guide \$14.95

### **1949-1953 Cambridge Glass Company Catalog**

#### **Reprint**

300 page reprint of original catalog, Paperback with price guide \$14.95

### **1956-1958 Cambridge Glass Company Catalog**

#### **Reprint**

164 page reprint of original catalog, Paperback \$12.95

### **Cambridge Caprice**

200 page book illustrating the most popular line of Cambridge Glass. Lists color, decorations, reproductions and rare pieces. Paperback with value guide \$19.95

*For NCC Members, these publications at a 10 percent discount.*

*By Bill & Phyllis Smith*

### **Cambridge Glass 1927-1929**

66 page reprint of original catalog, Paperback with identification guide \$7.95

*By Cambridge Buffs Study Group*

### **Nearcut** (Temporarily Out-of-Stock)

108 page reprint of 1910 Cambridge Catalog, Paperback with price guide \$9.95

**Price Guide**, Price alone, includes postage \$3.00

*By Mark A. Nye*

### **Cambridge Rose Point**

94 Pages, fully indexed, Paperback with Value Guide \$12.95

### **Value Guide**

Updated value guide for Rose Point Book, Included with above. Price alone, includes postage \$5.00

**Cambridge Stemware NEW.** 2nd edition. Same format as original. \$19.95

*By Mary, Lyle and Lynn Welker*

### **Cambridge Glass Company**

120 pages of reprints from eight old catalogs, Paperback \$10.00

### **Cambridge, Ohio Glass in Color II**, Spiralbound \$5.95

*By Harold and Judy Bennett*

### **1903 Cambridge Glass Company Catalog Reprint**

106 page reprint of an original catalog, Paperback \$7.50

*By Degenhart Paperweight and Glass Museum*

**Reflections**, 45 page book giving a history of all 18 glass companies in Guernsey County. Paperback, with pictures. \$5.00 including postage

**Address orders to: Books, National Cambridge Collectors, Inc., PO Box 416, Cambridge OH 43725-0416**

Please add postage and handling to your order (first book, \$2.00; each additional book, 50 cents), Ohio residents add 6 1/2% state sales tax. Please send only check or money order, NO CASH, NO CHARGE CARDS. *Dealer Discounts Available - Please Write!*

## ASK NCC: LETTERS FROM MEMBERS AND FRIENDS

Dear NCC:

To all of the people that made our first visit to a Cambridge Convention a real great time we say "THANK YOU".

My wife, Eve and I made a lot of new friends, enjoyed the get-togethers, learned a lot, and of course "enhanced" my collection of Carmen at the sale.

We all know how busy we get when we retire, but in spite of the hectic schedule, we're making space on the 1996 calendar for the Convention.

Thanks again to all the members for their hard work -- it showed.

Zeke and Eve Cunningham  
Palm Beach Gardens, Florida

---

Dear Zeke and Eve:

Our thanks for your very kind letter. The Convention represents the culmination of hundreds of hours donated by volunteers. Your recognition, I'm sure, means a lot to all of them.

For members who have never attended an NCC Convention, we hope you consider it for 1996. Take it from Zeke and Eve, it's a good time!

Rick

---

## TECHNOLOGY DONATION

The Board would like to acknowledge a significant donation to the Museum that was announced at the 1995 Annual Meeting of the membership.

Kelvin and Sharon Moore, devoted members and dealers at our Glass Show, have donated a 386 computer loaded with considerable software to our NCC Museum. It also includes a CD/Rom.

The computer will vastly enhance our capabilities in managing membership files, correspondence, and publishing the Crystal Ball. Thanks, guys!



**FIRST TIME CONVENTION  
ATTENDEES 1995**

Beverly Ales  
Jim and Rae Ann Bergman  
Ron and Eileen Borem  
Jerry, Tom and Tracy Burske  
John Corl  
Zeke and Eve Cunningham  
Jane Fagg  
George and Jo Foglesong  
Fleur De Ly Healy  
Don and Diane LaTourette  
Dr. Michael Mastel  
Nancy Misel  
Sharon McNeil  
John Parr  
Ramona Reed  
George and Bev Stamper  
Donald and Bonnie Stevens  
Harold and Ann Stoetzer  
Sharen Theis  
Robert and Barbara Trebilcock  
Bart, Bill and C.L. Wales  
Patti Buenting Walsh  
Doddie Williams  
Michael Wyse  
Michael Young

**PICNIC WITH  
CAMBRIDGE**

**QUARTERLY MEETING  
AUGUST 26, 1995  
12 NOON**

**N.C.C MUSEUM**

**Come to our annual potluck picnic. Bring a dish of food, and hopefully, a glass donation for our Museum.**

**Hey, volunteers! Come at 10:00 a.m. and help a service crew of members working on our Museum and the Storage Building.**

**At 6 p.m. the night before, the Board of Directors will meet at the Museum. All members welcome!**



Glass show dealers and new members, Lydia and Cliff McNeil from Florida, show off Gold Encrusted Ebony. Wow!

## WE CLEAN CLOUDY GLASS!

### \*\* SATISFACTION GUARANTEED \*\*

YES, IT IS TRUE THAT WE REALLY CAN RESTORE THE INTERIOR OF YOUR CRUET, VASE, DECANTER AND MOST OTHER INTERNALLY ETCHED ITEMS BACK TO NEAR ORIGINAL CONDITION!

WE DO NOT OIL, WAX OR COVER UP THE SICKNESS IN ANY WAY! WE ACTUALLY REMOVE IT.

NO ITEMS ARE TOO SICK TO CLEAN! IF WE CANNOT CLEAN YOUR ITEM TO MEET YOUR SATISFACTION, THE CLEANING IS FREE!

WE ARE SO CONFIDENT IN OUR SERVICE THAT WE ASK THAT YOU SEND NO MONEY. WHEN WE RETURN YOUR ITEM A BILL WILL BE ENCLOSED FOR THE POSTAGE & CLEANING. IF YOU ARE HAPPY, PLEASE SEND PAYMENT; IF NOT, RETURN THE BILL MARKED "NOT SATISFIED".

PLEASE ALLOW 6-8 WEEKS FOR REDELIVERY OF MOST ITEMS. ALL GLASS IS HANDLED AND CLEANED AT YOUR RISK. SOME VERY CLOUDY ITEMS MAY TAKE SEVERAL ADDITIONAL WEEKS.

CRUET	\$20.00	COCKTAIL SHAKER	\$30.00
COLOGNE	\$20.00	SALT SHAKER (SINGLE)	\$15.00
WATER BOTTLE	\$30.00	SALT SHAKER (PAIR)	\$25.00
DECANTER	\$30.00	CRUSHED FRUIT JAR	\$30.00
VASES (UNDER 12 IN.)	\$25.00	LAVENDER JAR	\$20-30.00

ALL OTHERS WRITE FOR QUOTE

SHIP TO: CARLISLE & ASSOCIATES  
28220 LAMONG ROAD, DEPT. C  
SHERIDAN IN 46069  
(317) 758-5767 AFTER 6:00 P.M.

## RECENT FINDS

Our thanks to those of you who sent the following submissions:

2 Crown Tuscan, Charleton decorated Flying Lady Bowls.

8 1/2" Crown Tuscan swan, gold decorated.

Prism Sign, gold encrusted "Cambridge Glass", mint condition.

Small round ashtray, signed, etched "Welcome 308th Engineers, Aug. 1-2, 1936, Cambridge, Ohio."

If you've found something to add to the list, please jot J.D. a note at the Museum box number or send us a FAX at 614-432-4245. We'd love to hear from you.

The

# DAZE Inc.

SPECIAL OFFER

to NCC friends

\$2.00 OFF

the 1 year subscription price when on this form or copy of it.

The Original National monthly newspaper dedicated to the buying, selling and collecting of colored glassware and china including Depression Glass and the Elegant Glass (Cambridge, Heisey, Fostoria, etc.) We educate and inform you each month with feature articles by top notch columnists, readers "finds", club happenings, show news and a multitude of ads. Find those missing pieces to your American-made glass, china and pottery collection. Can't identify it? Perhaps we can help "keep up with what's happening" with a subscription to the DAZE. Buy, sell or trade from the convenience of your easy chair.

Name \_\_\_\_\_

Street \_\_\_\_\_

City \_\_\_\_\_

State \_\_\_\_\_ Zip \_\_\_\_\_

1 year \$21.00    2 years \$40.00    \$2.00 Single Copy

Subscription Hot Line: 1-800-336-9927

Exp. Date \_\_\_\_\_ Card No. \_\_\_\_\_

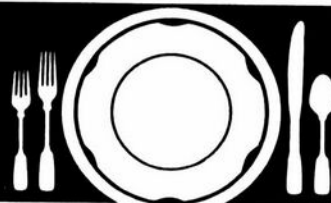
Signature \_\_\_\_\_

Orders to:

**The Daze, Inc., Box 57, Otisville, MI 48463**

Please allow 30 days for your first issue - Canadian Subscribers, add \$1.00 per year and subscribe by charge card only! This Special Offer may not be combined with any other special offer.

Offer Expires December 31, 1995



## Our Stems

### Don't Have Thorns

As the world's largest supplier of discontinued china, crystal and flatware, Replacements, Ltd. has 54,000 different patterns and 2.1 million pieces.

We have Rosepoint, Rambling Rose, Midnight Rose, Rosebud, Rosechintz, . . .

And these stems don't have thorns.

## REPLACEMENTS, LTD.

1089 Knox Road • PO Box 26029  
Greensboro, NC 27420 • Dept CB

Everyday 8am-10pm

**Call 1-800-562-4462**

## CONVENTION (from page 1)

Early risers found their way to the Flea Market at the Beech Grove Family Development Center before the first rays of sun appeared Saturday morning. Many exciting purchases were made before breakfast.

Saturday afternoon, Lynn Russi and Bob Hill presented a program outlining and detailing the art of mould making. Lynn Russi is a retired mould maker who worked at the Fenton Glass Company for 28 years, while Bob Hill was the supervisor of the mould shop at Fenton since 1969.

Highlights of the afternoon were the ever popular Glass Identification and Bring and Brag sessions presented by Lynn Welker, local glass authority. The room was filled with anxious collectors as Lynn Welker identified glass and verified Cambridge pieces. Later, observers were in awe of the many rare Cambridge pieces that collectors brought to impress and share with fellow interested collectors. This year's show saw the first-time appearance of a Rubina punch bowl which is a very, very rare piece of Cambridge glass.

Following the Saturday night banquet, D. Thomas O'Connor, editor of "Glass Collector's Digest" spoke about Kemple glass. He presented some interesting information with slides to highlight his speech. Lynn Welker won the Milk glass pitcher door prize, which he donated to the NCC museum.

Sunday morning, the annual meeting followed a buffet breakfast. The following board members were reelected: J.D. Hanes, Lynn Welker, and Bud Walker.

The annual Cambridge Glass Company workers' reunion Sunday afternoon saw 51 former workers in attendance. This chance to visit and reminisce was added to by the opportunity for the former workers to visit the show and sale and see many of the pieces of glass that were once so familiar to them.

As the convention wound down late Sunday afternoon, many of those in attendance were happily taking some new acquisitions to put in their collections. Not only had they found some treasures but they had visited with and shared many stories and memories with old and new friends.

**ROBERT W. RILEY**  
**PO BOX 4180**  
**SPRINGFIELD MA 01101**  
**(413) 739-3669 8PM - MIDNIGHT**  
**P & I EXTRA**

### NEARCUT

#2660 Toy Wheat Sheaf punch bowl	\$45.00
#2630 Green Toy Colonial spooner	\$28.00
#1 Nearcut toy water pitcher	\$25.00
#2631 Marjorie water bottle	\$45.00
#2651 Feather 8" plate, signed	\$18.00
#2651 Feather 9" ruffled bowl (E shape)	\$25.00
#2699 Buzz Saw 9" bowl (A shape)	\$25.00
#2760 Daisy footed oval banana boat	\$22.00
#2766 Inverted Thistle 9" bowl (A shape)	\$30.00
#1012 Wheatsheaf blown s & p (no tops)	\$20.00

### ETCHED

#3400/14 7" tall comport etch Portia w/gold trim	\$75.00
#3900/100 6 oz. oil etch Rose Point	\$100.00
#1327 1 oz. favor vase/cordial etch Chantilly	\$28.00

### CLEAR

#3104 5 oz. tall hock (12) set	150.00
#3797/67 Square 4" candlesticks, pair	\$20.00
#3797 Square 10" oval bowl	\$25.00
#3797/151 Square 3 1/2" ashtray (2) each	\$10.00
#3797/120 Square 2 part 6" relish	\$12.00
#104 Mt. Vernon 12" celery & relish	\$25.00
#400 3 oz. cocktail with ball bottom (6) set	\$75.00
#400 14 oz. tumbler with ball bottom (5) set	\$75.00
Dolphin candlesticks, Mt. Vernon base, pr	110.00

### COLORS

#1066 Pink 3 oz. low cocktails, clear stem & foot (6)	\$90.00
#3103 Clear 6 oz. low sherbets, stem only Carmen (8)	100.00
#647 Lt. Emerald 2 lite keyhole decagon sticks, pair	\$75.00
#638 Amber 3 lite keyhole decagon sticks, pair	\$75.00
#3500/79 Amethyst 3" basket	\$60.00
#15 Helio 8" bowl with gold floral border	\$40.00
#94 Mulberry sweet pea vase with heavy gold border	\$75.00
#627 Amber 4" candlesticks, pair	\$20.00
#345 Amber Caprice 5" vase with polished top	\$80.00
#1040 Royal Blue 3" swan, signed	\$90.00
#2971 Eleanor Blue mayo ladle	\$40.00
Moonlight Blue Caprice #38 cig. box & 4 #32 ashtrays	\$75.00
#57 Moonlight Bl. Everglades 15" 3 toed sandwich plate	100.00



# ~ GLASS MARKETPLACE ~

## Classifieds

**MAIL BIDS:** #316 Blossomtime etch Apple candy box and cover with Carmen stem. Right to refuse all bids. Bids close August 20, 1995. **S. Smith, 4959 Arbor Way, Sylvania, Ohio 43560.**

**WANTED:** Hard to find Rose Point, Rose Point #3106 stems, Nude stems, and novelty items. Write price and description. **Nancy and Jim Finley, 711 West Broadway, Sedalia, MO 65301. Phone 816-826-5032 or 827-0101.**

**WANTED:** #2800 Community Crystal Basin, 15 1/2" in diameter. Pictured on page 107 of Welker Reprint Book One. **Bud Walker, (609)-965-2413.**

**WANTED:** Cambridge Arms, Epergues plus Accessory Pieces. Vases #2355 any size and bobeches #327. Looking for a 10" or 12" Everglades Bowl and Candlesticks to buy. **Jody Stacken, 3022 Quail Creek Dr, Topeka KS 66614. (913) 272-7118**

**WANTED:** Cambridge Bridge Hounds (Pencil Dogs) - Interested in all colors (except amber, amethyst, crown tuscan, forest green, emerald, ebony, mocha, smoke, and tahoe blue). Contact **Lorraine Weinman, 5526 Fullview Hts., Athens, OH 45701, (614) 594-3305**

**WANTED:** Advertisers interested in strong reach and results among buyers of Cambridge Glass. Contact the Crystal Ball. See page two.

## ANNOUNCING THE PUBLICATION OF JANUARY 1, 1940 CAMBRIDGE CATALOG



This is the long awaited reprint of the January 1, 1940 Cambridge catalog, complete with all the known supplemental pages. It is not bound but comes drilled, ready for placement in your own three ring note book cover. The original was not bound; rather it too was in a three post binder. The 1940 catalog was the largest of the Cambridge catalogs and with the supplements contained over 250 pages. Shown in it are Blossom Time, Candlelight, Diane, Portia, Elaine, Wildflower, Rose Point, all the blanks then in production, complete stemware lines, and much, much more. This catalog contains many items not seen in any other catalog reprint. It is completely indexed by line, type of item and etchings. Due to its size and the number of items shown, the reprint does not include a value guide. This is a one time printing and members are urged to purchase their copy before supplies are exhausted.

List Price - \$34.95 plus \$3.00 shipping & handling  
( NCC, Inc. members - \$31.45 plus \$3.00 shipping & handling)

NCC, Inc.  
P.O. 416  
Cambridge, OH 43725-0416

# DEALERS



# DIRECTORY

NOTE: When writing to the Dealers listed here, please enclose a SASE!

<p><b>DAUGHERTY'S ANTIQUES</b>  <b>Jerry and Shirley</b>                  Antiques and Collectibles • Mostly Glass                  Shows &amp; Mail Orders 2515 Cheshire No.                  402-423-7426 Evenings Lincoln NE 68512</p>	<p><b>"HAPPINESS IS"</b>  <b>Buddy and Kathy Stultz</b>                  3106 Warren Court, Glen Allen, VA 23060                  804-672-8102                  Specializing in American Made Glass                  We Buy &amp; Sell, Shows &amp; Mail Order</p>	<p><b>THE MUTED SWAN ANTIQUES</b>                  5486 Peachtree Rd. Chamblee, GA 30341                  Heart of Chamblee Antique Row                  Specializing in                  Cambridge, Heisey and Fostoria                  Bill &amp; Pat Miller 404-451-7620</p>
<p><b>Milbra's Crystal</b> Buy &amp; Sell                  Replacement and Matching Specializing in                  Cambridge                  Milbra Long (817) 645-6066 Fostoria                  Emily Seate (817) 294-9837 Heisey                  PO Box 363, Rio Vista, TX 76093 and others</p>	<p>BUY-SELL. (513) 390-3617  <b>Taste of Honey</b>                  Glassware - Collectibles                  Clarke West 4888 Brannan Dr. E.                  Carole West Springfield, OH 45502</p>	<p><b>ARMORY ANTIQUES</b>                  168 West Main Street                  Plain City, OH 43064  <b>QUALITY THINGS</b>                  Cambridge, Heisey, China, Silver, Furniture                  Mon-Sat 10-5 VISA/MC 614-873-4890</p>
<p><b>THE GLASS URN</b>                  456 West Main Street, Suite G                  Mesa, AZ 85201 602-833-2702                  Mail Order Shows Open Shop                  CAMBRIDGE, FOSTORIA, HEISEY, ETC.</p>	<p><b>ANTIQUES ON THE MALL</b>                  SPECIALIZING IN CAMBRIDGE GLASS                  Bogart's - Bldg #3 - Norwich, OH                  Virginia Bennett 614-432-4483                  64183 Warne Drive, Cambridge, OH 43725</p>	<p><b>GATEWAY ANTIQUE MALL, INC.</b>                  JUST NW OF MINNEAPOLIS-ST PAUL, MN                  Next to Super 8 in Rogers, MN                  (I-94/101 Intersection)                  85 Dealers 7 Days, 10-6 612-428-8286                  ELAINE STORCK, DIRECTOR</p>
<p><b>ETTELMAN'S DISCONTINUED                  CHINA &amp; CRYSTAL</b>                  Cambridge a Speciality                  P.O. Box 6491-CB Corpus Christi TX 78466                  Phone 512-888-8391 Include S.A.S.E.</p>	<p><b>D &amp; D ANTIQUES</b>                  Columbus, Ohio                  Dick Slifko SHOWS ONLY</p>	<p><b>RONI SIONAKIDES</b>                  6565 W. Herbison Rd. DeWitt, MI 48820                  517-669-5981                  Fostoria, Tiffin, Duncan, Cambridge</p>
<p><b>THE GLASS CUPBOARD</b>                  P. O. Box 652                  West End, North Carolina 27376                  Marcia Ellis Cambridge, Duncan, Heisey                  910-673-2884 Shows, Mail Order</p>	<p><b>JUDY'S ANTIQUES</b>                  Judy Bennett                  422 S. Ninth Street (Corner of Jefferson)                  Cambridge, Ohio 43725                  BUYING Ph.614-432-5855 SELLING                  CAMBRIDGE GLASS MY SPECIALTY</p>	<p><b>YOU CAN ADVERTISE YOUR                  ANTIQUE SHOP HERE!</b></p>
<p><b>FINDER'S ANTIQUE HOUSE</b>  <i>New Home of Elegant Glassware</i>                  1169 Piney Forest Rd.                  Danville, VA 24540                  (804) 836-6782                  Cambridge-Heisey-Duncan-Fostoria</p>	<p><b>GREEN ACRES FARM</b>                  2678 Hazelton Etna Rd., Pataskala, OH 43062                  (State Route 310 North)                  Sat &amp; Sun 1-7 PM 614-927-1882                  Antiques, Crystal Glass and Collectibles</p>	<p><b>CRYSTAL LADY</b>                  1817 Vinton St., Omaha, NE 68108                  Joann D. Hagerty                  Bus. 402-341-0643 Res. 402-391-6730                  Specializing in Elegant Glass &amp; Collectibles</p>
<p><b>ASK</b>                  Specializing in Cambridge. Wide variety.                  Booth #14 in the Antique Mall of Boswell                  90 Miles south Chicago, right on U.S. 41.                  7 days a week 10-5, except Sun. 12-5                  (317) 869-5525</p>	<p><b>FLORENCE SOLITO</b>                  54 Old Stafford Rd, Tolland CT 06084                  Stock All Elegant Glassware                  Mail Order Since 1978                  Send Wants                  203-872-3294 Satisfaction Guaranteed</p>	<p><b>YOU CAN ADVERTISE YOUR                  ANTIQUE SHOP HERE!</b></p>
<p><b>MICHAEL KRUMME</b>                  Cambridge • Heisey • Fostoria • Duncan Miller • Paden City                  New Martinsville • Fenton • Tiffin • Imperial • Morgantown                  I search - Send detailed want list - all are kept on file                  PO Box 5542                  Santa Monica, CA 90409</p>	<p><b>YOU CAN ADVERTISE YOUR                  ANTIQUE SHOP HERE!</b></p>	<p><b>MARGARET LANE ANTIQUES</b>                  2 E. Main St., New Concord, OH 43762                  Lynn Welker 614-826-7414                  Cambridge Glass Matching Service                  Hours Mon-Fri 10-12AM, 1-5PM or by Appointment</p>
<p><b>GLASS RESTORATION</b>                  BRILLIANT CRYSTAL ELEGANT DEPRESSION                  DON &amp; LYNNE WORMLAND                  MT. CLEMENS, MICH                  810-468-3519</p>	<p><b>ALADDIN LAMP BOOKS</b>                  Free List                  Figurine Lamps Wanted                  Bill &amp; Treva Courter                  3935 Kelley Rd. Kevil, KY 42053                  Phone/FAX 502-488-2116</p>	<p><b>YOU CAN ADVERTISE YOUR                  ANTIQUE SHOP HERE!</b></p>

# ISAACS ANTIQUES



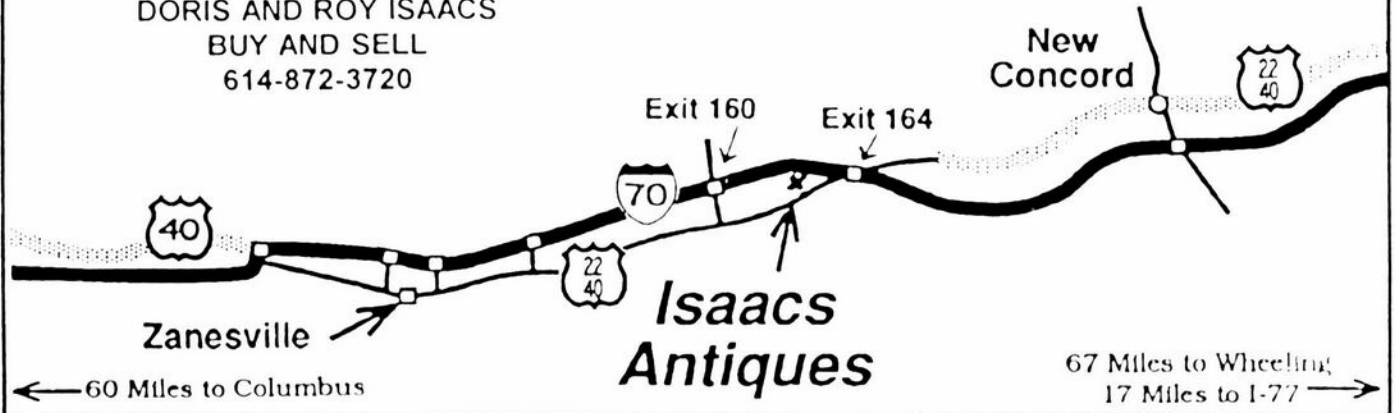
WE FEATURE GLASSWARE OF: CAMBRIDGE,  
HEISEY, FENTON & FOSTORIA  
Plus Art Pottery & a General Line of Antiques

DORIS AND ROY ISAACS  
BUY AND SELL  
614-872-3720

7525 East Pike  
Norwich, Ohio 43767  
614-872-3720

In East Pike Antique Complex - Rt 40,  
One Mile West of I-70 Norwich Exit #164

Hours 10 - 5:30 Mon. - Sat.  
12 - 5:30 Sun.  
Open Year Round



## Bogart's Bed & Breakfast

62 W. Main Street, New Concord  
New Concord lodging in 1830 Federal  
Style home, decorated with  
antiques throughout.



**Bogart's Antiques**  
7527 E. Pike, Norwich OH  
Quality Antiques Bought & Sold

OWNERS: Jack & Sharon Bogart  
872-3514 or 826-7439

Membership Renewal Notice  
This is your last issue of the **CRYSTAL BALL**, if the date on your address label reads 8-95.  
*Please renew now!*

National Cambridge Collectors, Inc.  
PO Box 416  
Cambridge, Ohio 43725-0416

Forwarding and Return  
Postage Guaranteed

FIRST CLASS MAIL  
U.S. POSTAGE  
PAID  
Cambridge, Ohio  
43725  
Permit No. 1

Please deliver promptly, dated material.  
**FIRST CLASS MAIL**

## Visit YOUR Museum

N.C.C. Museum of Cambridge Glass

Hours: Wednesday through Saturday  
9:00 AM to 4:00 PM

Sunday Noon to 4:00 PM

Closed Mondays and Tuesdays

Located 1/8 mile east of Interstate 70 on  
US Route 40 at Cambridge, Ohio

Telephone and Fax (614) 432-4245