



Cambridge Crystal Ball

Published monthly by National Cambridge Collectors, Inc.
to encourage and report the discovery of the elegant and boundless product of the
Cambridge Glass Company of Cambridge, Ohio

Issue No. 248

December 1993



From your
Officers, Board of Directors
and
CRYSTAL BALL Staff



Cambridge CRYSTAL BALL

Official Publication of National Cambridge Collectors, Inc. a non-profit corporation with tax exempt status. Published once a month for the benefit of its members. All rights reserved; reproduction in whole or in part without written permission of NCC and the author is prohibited. Membership is available for individual members at \$17 per year and additional members (12 years of age and residing in household) at \$3 each. \$12.00 of the \$17.00 annual dues is for a 1 year subscription to the Cambridge CRYSTAL BALL. All members have voting rights, but only one CRYSTAL BALL will be mailed per household. Foreign mailings subject to a postage surcharge. Back issues of the CRYSTAL BALL are available (beginning with Issue No. 1, May 1973) for members only. Cost: \$1.00 each or 12 issues for \$10.00.

1993-94 Officers & Committee Chairpersons

President	Joy R. McFadden
Vice-President	Mark A. Nye
Secretary	Richard Jones
Treasurer	David B. Rankin
Sergeant-at-Arms	Cynthia A. Arent
Acquisitions	Joe Andrejcek
Budget & Finance	David B. Rankin
By-Laws	Charles Upton
Membership	Jeff Ross
Museum Expansion/Relocation	Willard Kolb, J. D. Hanes
Museum---Facilities	Doyle Hanes
Museum---Interior	J. D. Hanes
Non-Glass Items	Judy Momirov, Tarzan Deel
Nominating	Mark A. Nye
Program	Willard Kolb
Project	Tarzan Deel
Publications	Mark A. Nye
Public Relations	Mark A. Nye
Publicity	Cynthia A. Arent
Study Group Advisor	Judy Momirov
1994 Auction	Lynn M. Welker
1994 Antique Show	Mary Beth Hackett
1994 Convention	Mark A. Nye
1994 Flea Market	Mike Arent
CRYSTAL BALL Editor	Sue Rankin

Classified Advertising Rates

10 cents per word \$2.00 Minimum
We cannot mix type size in classified advertisements. Abbreviations and initials will count as words. Payment in full must accompany all ads.

Display Advertising Rates

(Camera-ready ads preferred)	Members	Non-Members
1/8 page	\$10.00	\$15.00
1/4 page	15.00	25.00
1/2 page	25.00	35.00
3/4 page	35.00	50.00
Full page	45.00	60.00

Dealers Directory

Six-line maximum \$24.00 for 12 months

Cambridge CRYSTAL BALL assumes no responsibility for items advertised and will not be responsible for errors in price, description or other information.

Advertising copy, articles, club news and notices must be in our P.O. Box by the 5th of each month to assure publication in our next issue.

Paid advertisements containing reproductions or new glass will not knowingly be accepted for publication.

Opinions or information stated in any signed article or letter printed in the CRYSTAL BALL are those of the authors and may or may not agree with National Cambridge Collectors, Inc. The Editor reserves the right to refuse and to edit any material submitted for publication to conform with the editorial style of the CRYSTAL BALL.

Please Address All Correspondence to:

National Cambridge Collectors, Inc.
P.O. Box 416, Cambridge, Ohio 43725-0416
President -- Joy R. McFadden 614/885-2726
Secretary -- Richard Jones 914/631-1656
Editor -- Sue Rankin 513/833-4626
NCC Museum /J. D. Hanes -- 614/432-4245

Please notify us immediately of any change in your address.

Please enclose an SASE when requesting information.

CAMBRIDGE GLASS BOOKS FOR SALE

By National Cambridge Collectors, Inc.

- **Colors in Cambridge Glass ***
128 pages, 60 color plates, fully indexed
Hardbound with price guide. \$19.95
 - **1930-34 Cambridge Glass Company Catalog Reprint ***
250-page reprint of original catalog
Paperback with price guide. \$14.95
 - **1949-53 Cambridge Glass Company Catalog Reprint ***
300-page reprint of original catalog
Paperback with price guide. \$14.95
 - **1956-58 Cambridge Glass Company Catalog Reprint ***
164-page reprint of original catalog
Paperback. \$6.95
- * For NCC members only, the above publications are available at a 10 percent discount.

By Bill and Phyllis Smith

- **Cambridge Glass 1927-1929**
66-page reprint of original catalog
Paperback w/identification guide. \$7.95

By Cambridge Buffs Study Group

- **Nearcut**
108-page reprint of 1910 Cambridge catalog
Paperback with price guide. \$9.95
- **Price Guide**
Updated price guide for Nearcut Catalog
reprint (including postage). \$3.00

By Mark A. Nye

- **Cambridge Rose Point**
94 pages, fully indexed
Paperback with updated value guide. \$12.95
- **Value Guide**
Updated value guide for Rose Point book
(including postage). \$5.00

By Mary, Lyle and Lynn Welker

- **Cambridge Glass Company**
120 pages of reprints from eight old catalogs
Paperback. \$10.00
- **Cambridge, Ohio Glass in Color II**
Spiralbound. \$5.95

By Harold and Judy Bennett

- **1903 Cambridge Glass Company Catalog Reprint**
106-page reprint of an original catalog
Paperback. \$7.50

Address your orders to:

Books
National Cambridge Collectors, Inc.
P.O. Box 416
Cambridge, OH 43725-0416

Please add postage and handling to your order (first book, \$2.00; each additional book, 50 cents). Ohio residents add 6½ percent state sales tax.

Dealer discounts available - please write!

SMOKERS ITEMS

PART II

by Mark A. Nye

During the second half of the 1930s, Cambridge used, instead of a formal catalog, a series of brochures that covered the various types of articles they sold. These brochures resembled catalog pages and were most likely assembled into a catalog by their recipients. During the years the brochures were used, their content varied. Initially, color and price information was included directly under the item illustration. Later, this information was removed and supplied by means of a separate price list.

Unfortunately, a complete set of the brochures, either the early or late versions, has not been found. The library at the Corning Museum of Glass has a microfiche copy of a set that contains both early and late pages. The information for this and future articles comes from this set.

One brochure dealt with smokers items. The quality of the paper copies obtained from the microfiche of this brochure is so poor they cannot be reprinted here. The first page began with the caption "SMOKERS ITEMS" and it appears at the top of the next page in its original style. (Even the caption had to be computer enhanced and cleaned up before its reproduction here.) The Corning microfiche copy of this brochure contains four pages. For each item shown, price and color information appears directly below the illustration. Prices are given for plain and etched ware, but information regarding what etchings, if any, were available on a specific item did not appear. It is entirely possible that the presence of a price for an etched item did not necessarily mean it was available etched in that color or colors. Rather, it might be a case of, if available etched in this color, this is what the price would be.

Among the ash trays pictured on the brochure's first page are the 387-391 series discussed in a prior article. On this page it states all were available in Crystal, Amber, Emerald, Dianthus Pink, Forest Green, Royal Blue and Ebony. In addition, the six-inch No. 390 was to be had in Carmen. While the smallest, the 2½ inch No. 387, was offered plain only. Prices for etched ware were provided for the other three in the colors of Crystal, Amber, Emerald, Dianthus Pink and Forest Green.

Prominently featured on the first page is the Nude or No. 3011 Figure ash tray. Its caption provided prices for pieces in the colors of Crystal, Amber, Forest Green, Gold Krystol, Royal Blue, Amethyst and in Crown Tuscan with an Ebony foot. Prices were provided for the piece etched in the colors of Crystal, Amber, Forest Green and Gold Krystol.

Probably the most unusual ash tray seen on this page is the 3400/146 four-inch handled ash tray. I was unable to locate an illustration of this item in any of the available catalog reprints. It is similar in style to the Tally Ho 1402/86 handled ash tray. The 3400/146 differs in that it is made from what appears to be a small 3400 line bowl. The handle is very likely the same one used for the Tally Ho piece. No prices were given for the 3400/146 ash tray etched but were provided for plain Crystal, Forest Green, Royal Blue and Amethyst.

The No. 1314 three-inch footed ash tray is illustrated on page 34-12 of the 1930-34 catalog reprint. In the brochure being discussed here, it was offered in the colors of Crystal, Forest Green, Gold Krystol, Heatherbloom, Royal Blue, Amethyst and Carmen. Prices were also provided for etched versions in the colors of Crystal, Forest Green, Gold Krystol and Heatherbloom.

Other ash trays appearing on this page are the Mt. Vernon #60 and #63, the Gadroon line #129 and #130 and the combination cigarette holder and ash tray set, No. 1455/1456. Illustrations of these pieces will be found in the Welker Catalog Reprint I.

Page two of the brochure features 21 items, all of them ash trays. It is on this page that one of the more unusual Cambridge ash trays, the No. 3105 three-inch ash tray, appears. The No. 3105 line is more commonly known as Pressed Rose Point stemware. The 3105 ash tray consists of the cone base from a Pressed Rose Point stemware item and a cast foot. It is captioned as made in Crystal only. This is consistent with the stemware line since only the bowls were in color.

It is on this page that the No. 1040 swan ash tray is

SMOKERS ITEMS

MANUFACTURED BY
THE CAMBRIDGE GLASS CO
CAMBRIDGE OHIO

captioned as available in Crystal, Amber, Emerald, Dianthus Pink, Forest Green, Royal Blue, Gold Krystol and Carmen.

Four items from the Sea Shell line also make an appearance on this page, the ash trays #32, #33 and #34 and the five-inch plate known as SS 1. While captioned as the five-inch plate, its intended purpose here was as an ash tray. The 2 1/4 inch Sea Shell No. 32 ash tray was offered in Crystal, Amber, Royal Blue, Coral, Moonstone and Carmen; the No. 34 in Crystal, Coral and Moonstone; and the plate and No. 33 ash tray in only two colors, Coral and Moonstone.

The six-inch No. 1313 ash tray consists of the 390 ash tray on, what today is commonly called, the "keyhole" stem. It is captioned as made in Crystal, Forest Green, Gold Krystol, Heatherbloom and Carmen plain, and etched in Crystal, Forest Green, Gold Krystol and Heatherbloom. Made from the four-inch No. 388 ash tray and a foot from the 3400 line, the No. 1311 footed ash tray was made in the same colors as the No. 1313 with the addition of Carmen.

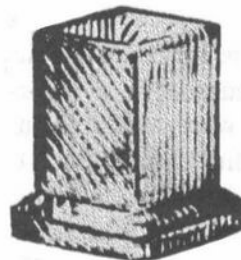
Three ash trays from the Tally Ho line appear on this page. They are the 1402/85 four-inch ash tray, the 1402/86 four-inch handled ash tray and the 1402/86 two-piece ash well and cover. The cover of the latter consists of the 1402/86 handled ash tray. For illustrations of the three items, see page 33-4 of the 1930-34 Cambridge Catalog Reprint. All three items were manufactured in the colors of Crystal, Amber, Forest Green, Royal Blue and Carmen. The Gadroon line is again represented with the 3500/131 four-inch oval ash tray, plain or etched in Crystal

only, and the 3500/124 3500/128 series of nesting ashtrays. From the latter group, only the smallest, the 3 1/4 inch No. 124 and the 4 1/4 inch No. 127 were made in color, Amber, Royal Blue and Carmen. According to the captions, all were being offered in Crystal, plain or etched as were the Amber versions of numbers 124 and 127.

Four additional ash trays appeared on page two; these being the Crystal 1457 three-inch and 1458 four-inch ash trays, the 1454 Carmen, Emerald and Royal Blue ash tray with lugs and the 617 three-inch ash tray that came in Crystal, Amber and Royal Blue. The 617 ash tray is nothing more than the cover to the No. 617 cigarette jar. Illustrations of numbers 1457 and 1458 (different sizes of the same style ash tray) will be found in Welker I.

To be continued

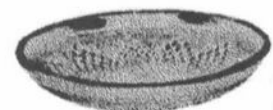
Happy Holidays to all my readers.



1455-2 1/2 x 2 1/2 in.
Cigarette Holder



Mt. Vernon 60
3" Ash Tray



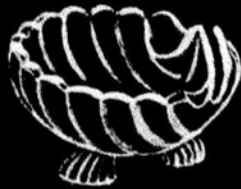
Mt. Vernon 63
3 1/2" Ash Tray



SMOKERS' ITEMS



1040
Swan Ash Tray



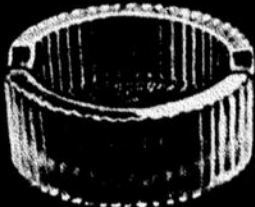
Caprice 213—2 1/2 In.
Ftd. Ash Tray



Caprice 212—3 1/2 In.
Ash Tray



Shell 32—2 1/2 In.
3 Toed Ind. Nut Dish



1457—3 In.
Ash Tray



Caprice 206—3 In.
Triangle Ash Tray



Shell 34—3 In.
3 Toed Ash Tray



1458—4 In.
Ash Tray



Caprice 210—4 1/2 In.
Triangle Ash Tray



Shell 33—4 In.
3 Toed Ash Tray



Caprice 95—2 In.
4 Ftd.



Shell 37—4 In.
3 Toed Ash Tray



3500 129—3 1/2 In.
Square Ash Tray



1456—2 1/2 In.
Ash Tray



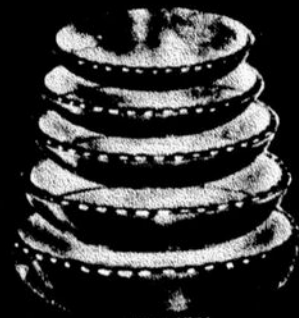
Shell 38—4 1/2 In.
3 Toed Bon Bon



3500 131—4 1/2 In.
Oval Ash Tray



3011
Figure Ash Tray
"Statuesque"



3500/124—3 1/2 In. Ash Tray
3500/125—3 1/2 In. Ash Tray
3500/126—4 In. Ash Tray
3500/127—4 1/2 In. Ash Tray
3500/128—4 1/2 In. Ash Tray
Nest of Above 5 Ash Trays



3500 130—4 In.
Oval Ash Tray

HIDDEN TREASURES

by Rich Bennett

We Cambridge Glass collectors always hear about those fantastic pieces of glass that are out there, but we just can't get our hands on them.

This article is about more Cambridge Glass than anyone can imagine, thousands upon thousands of pieces. That's just it - pieces! I'm referring to the Cambridge Glass dump. Here is a place that any true collector, I feel, would enjoy. Finding the unknown! A place many people probably felt was buried along with our factory. But it wasn't! The dump survived, and I, for one, intend to keep it alive!

This adventure started over two years ago. Our factory had vanished. The land was bare. But I knew from that moment on it was time to find "Hidden Treasures." Walking the ground of this famous factory would give any collector a wonderful feeling, knowing that almost anywhere they walked there had been those great workers who produced such beautiful glass.

It didn't take long to find pieces of glass. I started out west of the factory and found many different colors and shapes. One of the first molded pieces I found was a Community Pattern #2800/234 brush vase in Helio, two-thirds intact. I was elated to find a piece this size, considering how long it had been since the factory had closed.

I walked further west, in the direction of the actual dump, not knowing exactly what was ahead of me. Former glass workers had told me "a dump" was located on the far west side of the grounds. As I came to a huge wooded area, I could see small leaf and vine-covered mounds which meant that digging wasn't going to be easy!

I walked toward the mounds realizing that over the years the glass had been covered over. Using a few tools I had brought along, I started pulling the leaves and vines away. There before me lay glass! Thousands of pieces of Cambridge Glass! I recognized most of the pieces and colors. There were pieces of Azurite, Topaz, Primrose, Helio, Ebony, Jade, Carrara, Light Emerald, Carmen, Crystal, Willow Blue, Forest Green and Crown Tuscan in various shapes: Bowls, candlesticks, stemware, nut dishes, door knobs, nudes, swans, bridge sets, et cetera.

The most interesting find was the "Bridge Sets." I found over 80 of the bases of Ebony Clubs and Spades and yet only a handful of the Carmen Diamonds and Hearts.

From that point on I knew my weekends were about to change. Here I stood in an area that can, and will, open many doors. The mysteries of the unknown were at my feet.



Dear Santa,

How are you? We are fine. We hope that Mrs. Claus is fine also, as well as all of your reindeer.

We have been good boys and girls this year, although some people may not think so.

Here is what we would like for Christmas:

Donations to the Museum of Cambridge Glass of:

- 1) Moonlight Blue Caprice.
- 2) Nude Stem Cocktails.
- 3) almost anything in the following colors: Primrose, Jade, Helio, Azurite, Blue I, Blue II, Windsor Blue, Ebony, Heatherbloom, Royal Blue, Carmen, Ebon and Pistachio. We really don't need any more stems, but anything else in these colors would be good.
- 4) shelves for the museum office or the money to buy them.

Now Santa, we know that you might look at this list of glass and say that we have some of these already. That's true, but the museum doesn't own it. It is all on loan from some very nice people who support the museum.

Santa, we would also like to ask you for some things

for the members and supporters of National Cambridge Collectors.

- 1) Many \$20.00 bills for our friends from Omaha.
- 2) Getting to stay home for our friend who lives in Michigan/Florida.
- 3) More admissions and sales for our treasurer.
- 4) A truck load of her favorite beverage for our friend, the McDonald's™ Manager.
- 5) A full bottle for our mini-auctioneer.
- 6) Free long distance phone calls for our President.
- 7) Old catalogs and advertising for "Cliff & Norm" from Boston.
- 8) For all of the members of NCC to find that special piece of Cambridge Glass that they have been searching for, to have a healthy and prosperous 1994, to have a wonderful holiday season, and to be able to visit the museum and attend the Auction and Convention in 1994.

Well Santa, we guess that is all that we want for Christmas this year. Take care of yourself.

The Museum Interior Committee

J. D. Hanes Shirley Beynon Vivien Clark
Marybelle Moorehead Jeff Ross Lynn Welker

WE GET LETTERS

Dear Sue,

We've been collecting Cambridge glass for about 2 years now and truly enjoy your newsletter. We have just about all of the reference books and are eagerly awaiting the etching book.

We're writing to thank J. D. Hanes and Lynn Welker for their recommendation on the swan lamps. We recently found these swans at the unheard of price of



\$180.00 for the pair. We were unsure of the rarity of the lamps, but Lynn directed us to the right decision. We've enclosed a photo of the lamps.

Along with our thanks, we also have a question. Would you know how many lines were produced with sterling silver bases? We recently purchased two cornucopias with a sterling base that bears the mark of the silversmith. The mark is a bearded man, crown, and either a D or S..

This is actually one of the many questions that we have, but we'll save the remainder for our first trip to the convention next year. Thanks for any help you can give us!

Sincerely,

Kathy and Glenn Corbett
California

Dear Kathy and Glenn:

All I can say is Wow! The picture says it all.

Now to your question regarding lines produced for sterling silver bases. Cambridge produced many pieces for other companies, including R. Wallace, International Silver, Gorham, Farber Bros. and decorating companies. Many of these pieces were made in what were called "private molds." Unfortunately, our information in this area is very sketchy. More research needs to be done.

We have prepared the following partial list strictly from memory and it is subject to error:

#3400/68 cream and sugar with various etchings.

#3400/141 80 oz. Doulton jug.

#3121 candlestick.

Pristine #312 candy box & cover, silver knob shape is different from #312 knob.

Pristine #285 2-part mayonnaise.

Pristine #126 13" shallow bowl.

Martha #495 2-lite candlestick.

Examination of the limited information on private molds made for Wallace, International and Gorham suggests that there are many more possibilities.

Perhaps, our readers can supply information on other pieces in sterling silver bases.

Sue

November Quarterly Meeting

by Sue Rankin

The weather was typical for Ohio in November, cold and gray with snow flurries. But, the weather aside, 36 hardy souls attended the NCC Quarterly Meeting Saturday, November 6 - members from as far away as New York, New Jersey and Michigan. Where were you?

Willard Kolb welcomed everyone and J. D. Hanes gave the invocation. Dinner followed. It was the best ever for a Quarterly Meeting, despite the ice in the iceberg lettuce.

President Joy McFadden called the business meeting to order at 8:15 p.m. Committee reports show that many people are devoting much time and energy to advancing NCC. Mark Nye reported that the Caprice Book is currently undergoing its final proof-reading. He hopes to have it to the printer by early January and available for sale at the Auction. Sue White of St. Louis has done the artwork for the cover and it is wonderful! This book has taken longer than anyone imagined when the project started, but it looks to be well worth the wait.

Lynn Welker said that the Auction will be held Saturday, March 5, 1994, at the Pritchard Laughlin Civic Center. He reminded everyone that those that attend the Quarterly Meeting on March 4 at 7:30 p.m. will be treated to a preview of the items for sale.

Plans for Convention 1994 are coming right along with Chairman, Mark Nye, announcing that the theme will be "The Roaring 20s." Make your plans now to attend and to join in the spirit by bringing your 20s costume.

President McFadden announced the appointment of the Nominating Committee. If you wish to serve on the Board of your organization please let the Committee know. You can contact them through the PO Box or contact Mark Nye, Chairman; Georgia Otten; Rich Bennett; Willard Kolb or Ed Chamberlain directly.

Under New Business, J. D. Hanes reported that mail service into and out of Cambridge has become nearly impossible. If you have sent anything to NCC and have not received a reply, please try again. J. D.

reported that he had received six pieces of mail on October 29 postmarked October 1 through 6 including one mailed in Cambridge. He is trying to resolve this problem, but doesn't hold out much hope of quick success.

Following the business meeting, J. D. Hanes introduced our speaker, John Boyd, President of Boyd's Crystal Art Glass.



Mr. Boyd, a fourth generation glass-maker, is very interested in modernizing and computerizing the glass-making business. He is also responsible for the development of many of their new colors.

John related that his grandfather used much guesswork in designing colors. He, on the other hand, has been attempting to be more precise and scientific in standardizing and quantifying their color formulas so that a particular color will always be the same, both within a batch and from batch to batch. Glass colors can vary not only due to differences in quantity and quality of ingredients but also due to differences in temperature in the tank and barometric pressure. A ten degree difference both in the tank and the kiln can change the color, or sometimes destroy the piece altogether.

Helped by his able assistant and wife, Karen, he showed many of the items and colors for which Boyd's are famous. He also showed a video depicting the building of a new tank and some glass being made. The new tank is a 1,500-pound tank, small by

today's standards, but large enough for one 8-hour shift. Their new tank also has a recuperator, which helps to recycle heat. After labor, gas for heating the tank is their largest expense.

John discussed the ingredients that make each color unique and why some colors are harder than others to produce. Cobalt, the coloring agent in Royal Blue, can cost up to \$40 per pound, but to make a pale blue you only need a pinch. Uranium dioxide, used in Vaseline or Topaz colored glass along with Primrose and Avocado, is highly regulated and hard to come by. He believes that it won't be many more years before Vaseline will no longer be made. Crown Tuscan is made with selenium and orange is made with selenium and cadmium sulfide. Purple uses manganese but they must watch the heat. Obviously, getting the colors right is not an easy job.

Boyd's Black glass is black, no green or purple is seen if held to the light.

Most of their production is in molds that they have designed themselves and many are named for family members. Their butterfly is made in a new mold that was made using his grandfather's Cambridge butterfly as the pattern. Unfortunately, the moldmaker broke the original butterfly.

This report just scratches the surface of the information provided by Mr. Boyd. For those of us attending, it was a very informative and enjoyable evening; you should have been there too.

Following Mr. Boyd's talk, Lynn Welker conducted show and tell. This was also a RARE treat in every sense of the word.



Lynn Welker Conducting "Show and Tell" shown holding a 3500/42 Covered Urn with Charleton Decoration



Rose Lady with Gold, Silver & Enamel Decoration



Frog Vase in Rubina!



Part of Show & Tell Table Showing Marigold Carnival Squat Vase (bottom center), Ebony Tall 2-lite Candlestick and Round Cigarette Box with Silver Overlay Decoration along with the Rose Lady and Frog Vase



Sampling of Items Made by Boyd's Crystal Art Glass as Presented by John Boyd

Club News

National Cambridge Collectors Inc.
Quarterly Membership Meeting
November 6, 1993
Theo's Coney Island, Cambridge, Ohio

The Quarterly Meeting was called to order at 8:10 p.m. by President Joy McFadden. The reading of the August minutes was waived as they have been published in the CRYSTAL BALL.

TREASURER'S REPORT

Dave Rankin delivered the Treasurer's Report as follows:

Cash Balance:

Checking Account as of 11/4/93	\$30,818.22
Money Market Account as of 9/30/93	<u>53,217.13</u>
Total	84,035.35

Net Income Year-to-date through September 30, 1993:

Operating	\$4,236
Museum	<u>3,071</u>
Total	\$7,307

COMMITTEE REPORTS

ACQUISITIONS: No report

BUDGET and FINANCE: No report

BY-LAWS: No report

MEMBERSHIP: Jeff Ross reported that there are currently 1045 Master Members, 384 Associates, 3 Lifetime, and 5 Honorary members for a total of 1437.

MUSEUM EXPANSION/RELOCATION: J. D. Hanes, co-chairman, reported that Charles Upton is checking with the Ohio EPA on our ability to expand on the current site. He further reported that they are also looking at other sites and asked the membership for any ideas or suggestions as well as donations toward this effort.

MUSEUM FACILITIES: J. D. Hanes reported for the chairman, Doyle Hanes, that new security lights for the storage building have been donated by Joy McFadden. The committee is planning to improve

the landscaping next spring and is seeking volunteers to help with this effort.

MUSEUM INTERIOR: Chairman J. D. Hanes reported that the Museum is now closed for the season. Total visitors for 1993 were 958, not including the convention week. This was within 5% of the 1992 level despite bridge access off I-77 being closed for four months. For 1994, museum hours are being expanded. Wednesday through Saturday we will open at 9:00 a.m. instead of 10:00 a.m. During March the museum will be open on Friday and Saturday from 9:00 a.m. to 4:00 p.m. and Sunday from Noon to 4:00 p.m.. April through October the museum will be open Wednesday through Saturday 9:00 a.m. to 4:00 p.m. and Sunday Noon to 4:00 p.m. Other hours can be arranged by appointment. Various displays in the back room will be changed and new donations included. The museum is actively soliciting donations of cash, glass and glass cleaning items like used towels. Contact J. D. Hanes if you wish a list of the club owned glass in the museum.

NON-GLASS ITEMS: Tarzan Deel, co-chairman, reported that the Cordials study group voluntarily cleaned the storage building and some turn tickets. He thanked them for their hard work and said that additional volunteers are needed for this task.

PROGRAM: Willard Kolb, chairman, reported that a program had been planned for this meeting.

PROJECT: Chairman Tarzan Deel reported that an exciting and affordable new fund-raising project is under development. Details will be reported in future CRYSTAL BALLS.

PUBLICATIONS: Chairman Mark Nye said that the Caprice book is at the proofreading and cover design stages. It will be available in early 1994. The committee is exploring a reproduction of the 1940 catalog (over 330 pages!) This book would probably cost \$49.95 and the book would be drilled for placement in a ring binder and shrink wrapped. The stemware book is complete and awaiting financing.

PUBLIC RELATIONS: No report

PUBLICITY: No report

STUDY GROUP ADVISORY: President McFadden reported that the Club had heard there was interest in a Columbus group but it needs an organizer. If you would like to volunteer to create this new group,

please contact Joy McFadden who can give start-up assistance.

1994 AUCTION: Lynn Welker, chairman, reported the Auction will be held on March 5, 1994, at the Pritchard Laughlin Civic Center with more lots than there were in 1993. Approximately 40 of the lots will be 100% donations to the Museum Fund. An Auction Preview will be held with the quarterly meeting at 7:30 p.m. on March 4, 1994, at the same location.

1994 ANTIQUE SHOW: Chairman Mary Beth Hackett reported that there will be some changes next year and complete details will be reported at the next meeting.

1994 CONVENTION: Vice-president and Convention Chairman, Mark Nye, said the theme of the 1994 convention will be "The Roaring 20s." Among the activities being discussed are a golf tournament, a Cambridge historical site tour, and a tour of the Fenton Glass Company. He hopes to have a Costume Party Friday night. Convention fees will probably have to be increased, but members will receive more for their money. We will provide a Convention favor to all attendees rather than a Banquet favor as in prior years. He also hopes to provide programs both Friday and Saturday afternoons. More details will be forthcoming early next year. Watch your CRYSTAL BALL. This should be our best Convention ever.

1994 FLEA MARKET: Chairman Mike Arent said the location will be the same as last year but changes are being made to the Early Buyer program to ensure fairness to all. He welcomes any suggestions.

CRYSTAL BALL: Editor Sue Rankin noted that the new automated delivery system is significantly aiding out-of-state delivery. She and Dave have given prompt delivery much attention this year and their efforts are paying off, to the benefit of all members.

NOMINATING: President McFadden announced the appointment of the nominating committee for next year's three available Board seats. Mark Nye will be chair. Willard Kolb, Georgia Otten, Rich Bennett, and Ed Chamberlain will serve as committee members. Mark Nye encouraged anyone interested in running for the Board to let a member of the committee know. Letters can be sent to the NCC Post Office Box.

President McFadden asked Secretary Rick Jones to say a few words about the article in the November CRYSTAL BALL announcing the dues increase. Rick said that for Master Members dues will increase from \$15 to \$17 per year effective January 1, 1994. Rick also mentioned that advertising rates in the CRYSTAL BALL will be raised on that date also. These increases, along with other measures, are designed to insure the financial stability of NCC.

OLD BUSINESS - None

NEW BUSINESS

J. D. Hanes made an important announcement. There have been significant mail delivery problems recently in Cambridge. Some mail has taken over three weeks to reach us. If you have sent correspondence and not received a response, PLEASE resubmit it. We want to make sure that we've heard from you and responded. It's important.

The meeting was adjourned at 8:50 p.m. and followed by the program from John Boyd and Show and Tell.

Respectfully submitted,
Richard D. Jones
Secretary

Study Club News

Study Group #13 - Southwest Ohio "Miami Valley, Ohio"

The Miami Valley (Ohio) Study group held their meeting on October 12, 1993, at the Huber Heights Public Library. There were twelve members present.

During the business meeting, there was discussion of plans for our Christmas party and gift exchange at Phyllis Smith's house on December 17. President Georgia Otten also appointed a nominating committee for next year's officers, and we adjusted our yearly program schedule.

During Show and Tell, members displayed and discussed the following items: Archfoot or Daisy bowl in Carrara or milkglass; Avocado cigarette box; Carmen Sonata candlesticks; #3400 creamer in Gold Krystol; a pair of Cambridge Arms; #3787 9-1/2" Light Emerald vase, etched Dragon; #638 Cinnamon Decagon 3-lite candleholder; #2899 Azurite 3-1/2"

flower block; Plainware #78 Bluebell 6" 3-compartment candy box; #3500/78 Ramshead 6" candy box and cover with gold encrusted Rose Point; and a Primrose candlestick.

For our program, Frank Wollenhaupt led a very informative discussion about reproductions and reissues made by Summit. Many examples and an especially helpful booklet, created by Frank and Vicki, given to each family, added much to the presentation. We gained much information about how to tell Summit's glass from Cambridge as well as information about the glassmaking process. The program was filmed on videotape so that others may profit from Frank's wealth of knowledge.

Submitted by
Judy Rhoads

Study Group #16 - Mid-Atlantic "Elegant Glass Collectors"

On September twenty-sixth, the members of the Elegant Glass Collectors were scheduled to meet at Adamstown, Pennsylvania for an outdoor meeting at Shupps Grove flea market. Due to the inclement weather, only four members were able to attend. Because of the heavy rains, members from Maryland, New Jersey and New York were unable to attend. However, some of our members could get together the following weekend, October 2, at the Delmarva depression glass show.

The Delmarva show is not a large show, but what it lacks in size it makes up in quality. There were more fine pieces of Cambridge glass offered than have been seen in some time. The Chamberlain's took home a #3011 nude stem cocktail with a green bowl. The Walkers found a decanter and 1 ounce cordial in crystal with gold stripes. They believe it was made during the reopened period. It will require Lynn Welker's expertise for positive identification.

Our group had a lively discussion concerning the reissues of Moonlight Blue Caprice that have started appearing on the east coast. Upon close examination, one can see that the quality and feel of the reissued pieces is not up to the quality of true Cambridge pieces. All agreed that we collectors should work together to put a stop to reissued pieces that are not marked as such. Due to the lack of concern of a few individuals, the value of Moonlight Blue Caprice could be seriously affected in the future - all

for a quick dollar.

Some of our members are looking forward to attending the November quarterly meeting, and the delicious home made pies at Coney Island. Hope to see everyone at the November meeting.

Submitted by
Bud Walker

THE CORDIALS' CHRISTMAS WISH LISTS by Rich & Sally Bennett

CINDY ARENT: A 19" Crown Tuscan Floor Vase, Gold Encrusted Candlelight and a Carrara Mannequin Head, Gold Silk Screened "Cambridge Glass Co." on base.

MIKE ARENT: A Crown Tuscan Cambridge Arms Candelabra with Crown Vases and Peg Nappies; A Crown Tuscan Ball Jug with Silver Seahorse decoration; and, a Crown Tuscan Monkey Lamp!

RICH BENNETT: A Carmen Mannequin Head with Gold Encrusted Rose Point Necklace; An Ebony 15" Martha Blank Punch Bowl, Gold Encrusted Rose Point with underplate and cups along with Ebony ladle with Gold Encrusted Rose Point Medallion on handle; and, for the 12 days of Christmas: 12 different colored Sweetmeat Nudes with Japonica decoration

SHIRLEY BEYNON: A Heatherbloom Mannequin Head; A 5" Star Candlestick Holder with Carmen, Milk Glass and Royal Blue Combo; and, A Carmen Owl Lamp with Japonica decoration!

CARL BEYNON: A Mardi Gras Prism Sign; A Pair of Ebon Tombstone Bookends with Gold Encrusted Picture of Cambridge Glass Factory; and, a four-piece Game Set all with Carmen feet, Gold Encrusted Wildflower.

J. D. HANES: An all Ebony Gold Encrusted Gloria Nude Cigarette box; a Crown Tuscan Gold stippled Swan Punch bowl and cups; and, a Carmen Ball Jug, Gold Encrusted Hunt Scene.

DOYLE HANES: A Heatherbloom Mannequin Head; a Carmen Cambridge Square Punch Bowl and cups, gold stippled; and, a Mardi Gras Bridge Hound.

JEFF ROSS: A Moonlight Blue Caprice Punch Bowl with Japonica decoration with underplate and 12 cups; Dinner Service for 12 in Mardi Gras Caprice in original paper and boxes; and, a Life-size Nude Com-pote in crystal, with any color dish!

SHARON MILLER: A 10" Rubina signed Swan; a Crystal Nude with Carmen Everglades Ivy Ball; and, a Heatherbloom Swan Punch Bowl with 24 cups.

JOE MILLER: An Ebon Pencil Dog with Gold Col-lar; and, a Crown Tuscan Keg Set with Charleton decoration!

JUDY MOMIROV: A Complete Dinner set for six Encrusted Candlelight on Pink 3500 Gadroon line; a 13" Pink Rose Lady Flower Frog with Gold Roses; and, a Pink Rocking Horse Candy Container, un-opened with original candy!

LORRAINE WEINMAN: A Pink Swan with Green Rose Knob lid; a Crown Tuscan Swan with Charle-ton decoration with a Moonlight blue Rose Knob lid; and, a Crown Tuscan Nude Stem with Charleton decoration on the foot and a Moonlight blue cocktail bowl!

KEVIN WEINMAN: A Moonlight blue Bud Vase with Gold Encrusted Wildflower; a Royal Blue Nude Stem with Crystal Bowl etched in Candlelight; and, a set of Heatherbloom Glasses with Silver Hunt Scene!

EDITOR'S NOTE: The Cordials obviously dream in Technicolor since most of their wishes are very im-probable, but we wish them a Merry Christmas, even if they don't get what they asked for.

**Glass Fanatics on the Prowl
Saturday, October 9, 1993**

by R. F. (Bud) Walker

The day was clear and warm, but fall was in the air, when Willard and Norma Kolb of Saint Clairsville, Ohio arrived at the Walkers' home in South Jersey. After checking Bud's collection of Cambridge, we decided to do a little glass hunting in the area. We headed for the flea market at Lambertville, New Jersey. Finding nothing worthy of our collections, we went on to visit the shops in Lambertville and New Hope, Pennsylvania. We found a few interest-ing pieces but they were priced beyond our budgets, since we are both pretty tight when it comes to getting our wallets out. We enjoy finding hidden

bargains. After leaving New Hope, we headed for Lahaska as they have a small flea market there. Here we found success. Willard purchased a small Candlewick basket, the handle was cracked but the two-dollar price was right. It was a one of a kind piece. While Willard was making his big purchase, Bud found an 8-inch Carmen shell vase for fifteen dollars. What a buy! There was one small problem; the crystal base was missing. Upon further investi-gation, Bud found that the dealer had forgotten and left the base at home. Arrangements were made for the dealer to deliver the base to Teresa, who has a shop there. So, with a little luck and a little glue, we will have a nice Carmen shelf piece.

As one's collection grows it becomes more difficult to find unique pieces, but I think you will agree that these pieces are different. This concluded our low budget glass hunting. After a fabulous chicken potpie dinner at a little Methodist church, the glass hunters called it a day.

WE GET LETTERS

Dear Sue,

Please reference the October article on lemon squeez-ers.

I have the second model with the following Patent imprint: "PATENTED JAN 6TH 1909 NO 912443."

Would you please explain how my later model has (1) the original patent no., and (2) an earlier patent date than attributed to either model of lemon squeez-ers in the article?

Fred Schaefer
Ohio

Dear Fred,

The article on lemon squeezers has raised several questions including yours. We can be fairly certain that economics played a role in not changing the patent number or date to reflect the later patent.

Since all patents were issued and dated on Tuesdays, January 6, 1909 is clearly a bad date. The 1909 calendar just happens to be the same as 1993 so you can check this fact. The reason for the January 6, 1909, date remains a mystery. This date does not coincide with the date of the patent application or

the issuance date of either patent. We can find no activity on this date related to these patents.

If this date is the result of some sort of mistake, I can suggest how it might have happened: Verbal communication. If you write the date using the pure number format, the issue date is 2/16/09. If you read the numbers aloud, one at a time you get: two one six zero nine. If someone communicated the date in this fashion and the first number was not heard or not written down clearly, you get one six zero nine or 1/6/09. Now is that a stretch or not?

As additional followup information to the original article, we have learned that there is a third version. This version may fall between the two versions shown in the patents. This version has the additional lugs (dam) added to the spout area referenced as key 10 in the second patent but does not have the lugs (reference 14) back near the handle.

Since the original article was published, Mark has learned that the lemon squeezers were also produced in Cobalt (I or II), Peach-blo and Light Emerald probably in the mid 1920s.

Sue

The
DAZE
Inc.

SPECIAL OFFER
to NCC friends
\$2.00 OFF
the 1 year subscription price
when on this form or copy of it.

The Original National monthly newspaper dedicated to the buying, selling and collecting of colored glassware and china including Depression Glass and the Elegant Glass (Cambridge, Heisey, Fostoria, etc.) We educate and inform you each month with feature articles by top notch columnists, readers "finds", club happenings, show news and a multitude of ads. Find those missing pieces to your 30s, 40s, or 50s pattern. Can't identify it? Perhaps we can help "keep up with what's happening" with a subscription to the DAZE. Buy, sell or trade from the convenience of your easy chair.

Name _____
Street _____
City _____
State _____ Zip _____

1 year \$21.00 2 years \$41.00 \$2.00 Single Copy

Exp. Date _____ Card No. _____

Signature _____

Orders to The Daze, Inc., Box 57, Otisville, MI 48463

Please allow 30 days for your first issue. Canadian Subscribers, add \$1.00 per year and subscribe by charge card only! This Special Offer may not be combined with any other special offer.
Offer Expires December 31, 1993

COLUMBUS ANTIQUE FLEA MARKET

12th
Year

(ANTIQUES AND COLLECTIBLES)

12th
Year

December 12th

Ohio State Fairgrounds - Lausche Building - Off I-71 Exit 17th Ave.

SUNDAY ONLY - 7 am-4 pm

Early buyers welcome 4 AM

Watch For The

1994 SCHEDULE 1994

150 Quality Dealers

SELLING: Advertising, Art Deco, books, Cambridge, clocks, coins, collectibles, depression glass, dolls, Fiesta, fine early furniture, Heisey, jewelry, lamps, oak furn., postcards, pottery, good primitives, tools, toys.

Show admission \$1.50 * Children under 12 free

Heated/Air Conditioned * Concession



*"The Friendly
Family Business"*

4214 North High Street, Columbus, Ohio 43214
(614) 267-8163 (614) 263-6830 (614) 885-2352

Elegant Glassware

Barbara & Cindy Brock

Rt. 1 Box 66AC
Callands, VA 24530

(804)724-6762
S & H Extra

Crystal:

#39 Arcadia 12-1/2" oval bowl	\$55.00
Caprice #62 12-1/2" belled bowl	\$47.00
Cap #65 11" 2 hdl 4 ftd oval bowl	\$47.00
Martha oval 12" Platter	\$14.00
Mt. Vernon 3-1/2 oz cocktails (4) ea	\$ 9.50
Cascade #136 5-1/2" comport	\$30.00
Tally-Ho syrup	\$37.00
#3400/68 creamer & sugar	\$15.00

Etchings:

#3500/64 10" celery & rel. Elaine	\$60.00
#3077 12 oz ftd tum Cleo (2) ea	\$10.00
#326 Martha basket Blossom Time	\$37.00
#3500/64 10" cel. & rel. Valencia	\$60.00
#487 12" oval cheese & cracker light green etch #725	\$45.00
#3400/167 12" 5 pt celery & relish yellow Apple Blossom	\$45.00

Colors:

#36 Centennial pink 3pt cov candy	\$55.00
#48 Everglades lt. blue 10" bowl	\$75.00
#3400/67 12" 5 pt rel lt blue	\$40.00
SA#45 9-1/2" low ftd cmpt Helio	\$34.00
SA#70 8" stix & SA#45 9-1/2" low ftd comport Primrose, Greek key trim	\$225.00
#1236 7-1/2" ivy ball Amber/Crys	\$23.00
#33 Mt Vernon 6" comport Amber/Crystal	\$45.00
#3143/39 Pitcher Optic Mocha	\$55.00
Stackaway Ash Tray (4) set Mandarin Gold wood stand original sticker	\$25.00

Want lists maintained
Please call or write

ANNE AND DICK KINSELL

2000 INDIAN TRAIL DRIVE
WEST LAFAYETTE, IN. 47906
317-463-9724

ALL ITEMS PRICED EACH
EXCEPT WHERE NOTED
(UPS \$3.50 MINIMUM)

SWANS

3.5" CRYSTAL, STYLE 1 (3) SIGNED	\$26.00
3.5" CR. TUSCAN, STYLE 3 (2)	\$38.00
3.5" COBALT STYLE 2 (2) SIGNED	\$110.00
3.5" COBALT STYLE 2 (SMALL FOOT CHIP) SIGNED	\$85.00
3.5" LT GR STYLE 2 SIGNED	\$40.00
4.5" CRYSTAL STYLE 1 SIGNED	\$32.00
4.5" PINK STYLE 1 SIGNED	\$54.00
8.5" YELLOW STYLE 3	\$125.00

2.5 OZ GEORGIAN TUMBLERS

CARMEN	\$25.00
AMETHYST SIGNED	\$25.00
MOONLIGHT BLUE	\$35.00

5 OZ. G. TUMBLERS

HEATHERBLOOM (4)	\$40.00
------------------	---------

CANDLESTIX AND BOWL

HEATHERBLOOM 3400/647 PR. STIX & 3400/4 12" BOWL ALL ETCHED PORTIA	SET \$450.00
--	--------------

NUT DISHES 3400/71

MANDARIN GOLD (SMALL IN GLASS FLAW)	\$26.00
CARMEN	\$49.00

LT EMERALD 13.5" DRAPED

LADY #513	\$250.00
-----------	----------

PEARL MIST #20 10.5" EVER- GLADES VASE

\$65.00

WANTED:

CRYSTAL CAPRICE FTD BOTTOM FOR
#165, 6"
CARMEN MT. VERNON TOP FOR 8" URN
PINK 2 CANDLE EVERGLADES
CANDLEABRA #1211
CRYSTAL EVERGLADE CNDSTX #1209
ROSEPOINT MANTLE FOR HURRICANE
BASE #1613
BALL CREAMER EBONY WITH CLEAR
HANDLE 3400/98

Classified

WANTED TO BUY: Rose Point #3106 stems. Write price and description. **Nancy & Jim Finley**, 711 West Broadway, Sedalia, MO 65301. Phone: (816) 826-5032 or 827-0101.

WANTED: Small ruby red barrel wine glasses (#3109) and accompanying glass tray. **James Willmann**, 10419 N.E. Old Creosote Rd., Bainbridge Is., WA 98110. (206) 842-5991.

WANTED: Crystal Tally-Ho flat punch cups, any number, to add to my set. **Michael Krumme**, PO Box 5542, Santa Monica, CA 90409. (213) 936-4214.

GLASS EPERGNES WANTED: New York City epergne collector seeking epergnes of any origin. Particularly desirous of unusual shapes, colors, those with hanging baskets or tulips, and any which are of definite American manufacture. Send photos only: **Ann Aikens**, 810 7th Ave, 36th floor, New York, NY 10019. Phone (212) 830-2072. Fax (212) 830-5199.

WANTED: Everglade or leaf line bowl (1207) and two Lily shaped flower holders as shown on Page 33-22 of The Cambridge Glass Company book. Also Duncan Miller Caribbean punch cups with assorted colored handles and Cambridge Swan Punch cups. Contact **Wade Sands**, P.O.Box 1390 Hines, IL 60141 or 312-296-6779.

WANTED: Crystal Caprice #1 Goblet, Crystal; Caprice footed tumblers #9, 12 oz, or #10, 10 oz; arm for #75 Epergne with two bud vases. Write, including prices to **Fran Joiner**, 3326 White Castle Way, Decatur, GA 30034.

FOR SALE: Cambridge Caprice Crystal 90 pcs. Cambridge Colors 85 pcs. Misc. Cambridge. Send SASE for list. **County Line Antiques**, 2021 S County Line Rd., St. Johns, MI 48879

INVENTORY CLEARANCE SALE

Cup Plates - Crystal, Cobalt, Amethyst or Teal	4.00
Scotty Dog Book Ends - Ebony Frosted, marked '1979 NCC'	15.00
Eagle Book Ends - Cobalt Blue	30.00
NCC Convention Favors:	
1980 Windsor Paperweight	5.00
1982 Gold Paperweight	5.00
1983 Blue Georgian Tumbler	5.00
1984 Amber Georgian Tumbler	5.00
1985 Pink Georgian Tumbler	5.00
1986 Gold Georgian Tumbler	5.00
1987 Light Blue Nearcut Martha Punch Cup	5.00
1988 Cobalt Cambridge Square Cigarette Holder	8.00
1989 Teal Mt. Vernon Cordial	8.00
1990 Pink Mt. Vernon Cordial	8.00
1991 Cobalt Mt. Vernon Cordial	8.00
1992 Ebony Mt. Vernon Cordial	8.00
1993 Light Green Caprice Ash Tray	7.00
Items by Cambridge Buff's Study Group:	
Lapel pins, black & gold	1.00
Tie tacks, black & gold	1.00

Postage & Insurance Extra
Ohio Residents Add 6½% Sales Tax

National Cambridge Collectors, Inc.
PO Box 416
Cambridge, OH 43725-0416

ADDITIONAL BOOKS FOR SALE

By the Degenhart Paperweight and Glass Museum

- **Reflections**
45 pages, histories of all glass factories in Guernsey County, Ohio
Paperback (includes postage) \$5.00

By Hector Bolitho

& the Jamestown Glasshouse Foundation

- **The Glass House - Jamestown Virginia**
32 pages giving history and restoration of the first glasshouse in America
Paperback (includes postage) \$1.50

LYNN WELKER

2 East Main Street
Phone (614) 826-7414

No Calls November 26-28

New Concord, OH 43762
UPS Extra, Excess ref.

CAPRICE:

#300 2½ oz. wines	(6)	\$22
#300 6 oz. low sherbets	(5)	\$10
#300 3 oz. cocktails	(2)	\$15
#17 cups and saucers	(8)	\$10
#180 5 oz. tumblers	(6)	\$16
#170 6½" club dish		\$30
#125 12" 3 pt. celery/relish		\$50
#167 6" candy box & cover		\$35
#65 11" oval hld. ftd. bowl		\$28
#136 7" tall comport		\$30
#130 7" low ftd. comport,hld.		\$14
#1338 3 lite stairstep csticks	(pr)	\$50
#70 7" candlesticks	(pr)	\$45
#24 9½" dinner plates	(2)	\$30
#184 12 oz. tumblers	(2)	\$16

CHANTILLY:

#3625 cocktails	(3)	\$20
#3625 iced teas	(3)	\$20
#3625 tall sherbets	(6)	\$18
#207 8" 3 pt. oval relish		\$38
#285 2 compt. salad dress,ss/ft		\$40

DAFFODIL:

Cups and square saucers	(3)	\$35
-------------------------	-----	------

DIANE:

#3122 cordials	(6)	\$45
#3400/4 12" 4 ftd. bowl		\$45

PORTIA:

#3900/126 12" 3 pt. celery/rel.		\$40
#1359 10½" bowl		\$45
#1338 3 lite stairstep cstick		\$35
#3130 original bell, Camb.label		\$65

WILDFLOWER:

#3121 2½ oz. wines	(3)	\$30
#3500/64 12" 3 pt. celery/rel.		\$40
#3400/4 12" 4 ftd. bowl		\$45
#3900/62 12" 4 ftd. bowl		\$50
#3400/11 3 pc. mayo set		\$55
#3121 tall blown comport, gold		\$50
#3900/35 13½" hld. cakeplate		\$45
#3400/67 12" 5 pt. celery/rel.		\$50

CUTTINGS:

Adonis #3500 cocktails	(8)	\$24
Croesus #3500/12-15" cel/relish		\$50
Harvest #3750 goblets	(4)	\$18
Harvest #3750 tall sherbets	(10)	\$16
Maryland #3139 goblets	(7)	\$15
Maryland #993 12½" ftd. bowl		\$45
Radiant Rose #3139 goblets	(6)	\$18
Rondo #7966 low sherbets	(6)	\$10

FLOWER FIGURES:

Moonlight Blue #518-8½" Dr.Lady	\$225
Lt. Emerald #509-8½" Two Kid	\$150
Crystal #1114-6" Bashful Charlotte	\$40
Amber Cleo 10½" flip bowl	\$40
SWANS: (* signed)	
Crystal 8½", Style III	\$45
Crystal 4½", Style III	\$25
Lt. Emerald 4½", Style I *	\$65
Ebony 3", Style I	\$45
Gold Krystol, Style II *	\$40
Crystal, Style II *	\$16
Crown Tuscan 3", Style III	\$30
Mandarin Gold 3", Style III	\$35

FIGURALS:

Scottie #1128 bookend	\$65
Nude cocktails: Amber, Gold Krystol, Forest Green (ea)	\$75
Nude Forest Green claret	\$85

Miscellaneous:

Hunt Scene #1402/5 Tally-Ho sherb(4)	\$30
Royal Blue blown Tally-Ho tall gob,	
Rockwell platinum grape decor	\$95
Sunset flared whiskey, super color	\$50
Sunset Gyro Ranch tumb.super color	\$75
Emerald Gyro #3900/117 20 oz. pitch	\$45
Crown Tuscan gold Rosepoint 10"vase	\$125
Crown Tuscan #3500-12" covered urn, gold encr Diane mint, acid signed	\$275
Ebony gold Blossomtime tall comport	\$200
Amber gold Portia 12½" hld. tray	\$85
Amber gold Minerva 12" 3pt.cel/rel	\$85
Carmen #3035 cordial, crystal stem	\$45
Primrose small basket	\$55
Emerald pressed Rosepoint champagne	\$50
Cambridge factory paperweight,gold	\$100
Milkglass Mt.Vernon urn salt dip	\$20
Gold Krystol keyhole sgl. csticks (pr)	\$30
Stradivarius low sherbets (4)	\$12
Carmen top hat ashtray	\$20
Amber #1321 28 oz. ftd. decanter	\$32
Green Nearcut #2351 Carnival cup	\$125
Amber Caprice 6" vase	\$75
CANDLESTICKS:	
#1307 3 lite candlesticks (pr)	\$35
#1563 Camb. Arms 4 candlearm (ea)	\$15
Lyre 2 lite 10" candelabra with large bobeches & prisms	\$150
Appleblossom 3 lite keyholes (pr)	\$60
Crystal dolphins, several different	Call.

PRICES EACH.

UPS EXTRA.

EXCESS REFUNDED.

RETURN PRIVILEGE.

ISAACS ANTIQUES



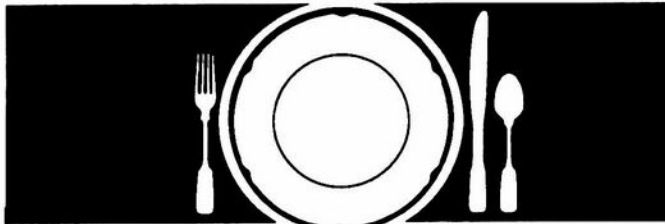
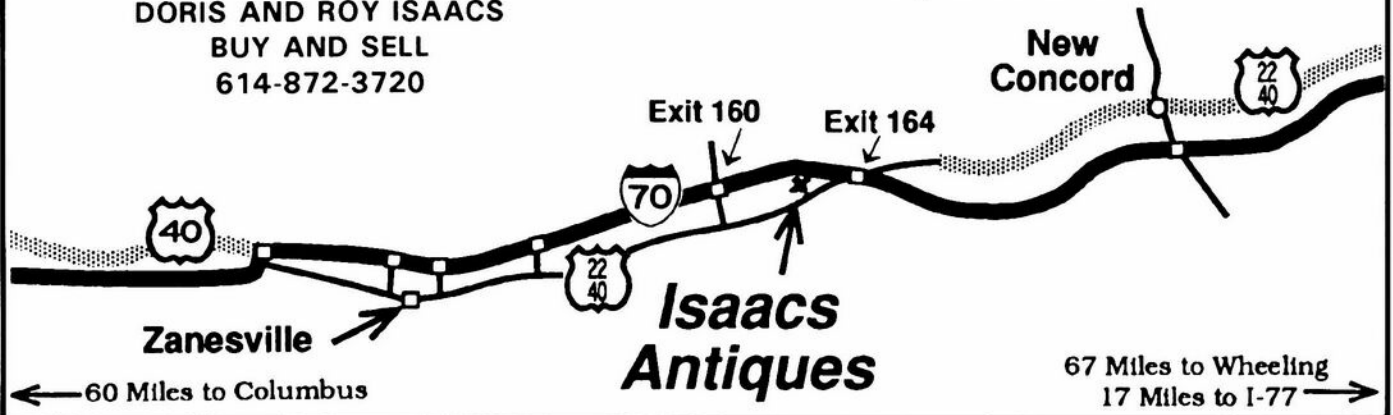
WE FEATURE GLASSWARE OF: CAMBRIDGE,
HEISEY, FENTON & FOSTORIA
Plus Art Pottery & a General Line of Antiques

DORIS AND ROY ISAACS
BUY AND SELL
614-872-3720

7525 East Pike
Norwich, Ohio 43767
614-872-3720

In East Pike Antique Complex - Rt. 40,
One Mile West of I-70 Norwich Exit #164

Hours 10 - 5:30 Mon. - Sat.
12 - 5:30 Sun.
Open Year Round



How to Find Those Missing Pieces.

The world's largest source of discontinued china, crystal and flatware, Replacements, Ltd., buys and sells over 45,000 different patterns.

If you need a piece, or several pieces to add to your collection ... or if you'd like to sell some unneeded extras ... call or write us. We can provide you with a complete printout of available pieces in your pattern. Or we'll let you know our prices for the pieces you wish to sell.

Replacements, Ltd. — a 100,000 square foot facility; 1.5 million pieces; over 500,000 satisfied customers. Contact us, or come see our showroom. Let us help you complete your collection ... or maybe you'll help add to ours.

REPLACEMENTS, LTD.

Call 1-800-562-4462. Or write:
1089 Knox Road • P. O. Box 26029 • Dept. CB
Greensboro, NC 27420

OVER 7000 CAMBRIDGE PIECES

WE CLEAN CLOUDY GLASS!

**** SATISFACTION GUARANTEED ****

YES, IT IS TRUE THAT WE REALLY CAN RESTORE THE INTERIOR OF YOUR CRUET, VASE, DECANTER AND MOST OTHER INTERNALLY ETCHED ITEMS BACK TO NEAR ORIGINAL CONDITION!

WE DO NOT OIL, WAX OR COVER UP THE SICKNESS IN ANY WAY! WE ACTUALLY REMOVE IT.

NO ITEMS ARE TOO SICK TO CLEAN! IF WE CANNOT CLEAN YOUR ITEM TO MEET YOUR SATISFACTION, THE CLEANING IS FREE!

WE ARE SO CONFIDENT IN OUR SERVICE THAT WE ASK THAT YOU SEND NO MONEY. WHEN WE RETURN YOUR ITEM A BILL WILL BE ENCLOSED FOR THE POSTAGE & CLEANING. IF YOU ARE HAPPY, PLEASE SEND PAYMENT; IF NOT, RETURN THE BILL MARKED "NOT SATISFIED".

PLEASE ALLOW 6-8 WEEKS FOR REDELIVERY OF MOST ITEMS. ALL GLASS IS HANDLED AND CLEANED AT YOUR RISK. SOME VERY CLOUDY ITEMS MAY TAKE SEVERAL ADDITIONAL WEEKS.

CRUET	\$20.00	COCKTAIL SHAKER	\$30.00
COLOGNE	\$20.00	SALT SHAKER (SINGLE)	\$15.00
WATER BOTTLE	\$30.00	SALT SHAKER (PAIR)	\$25.00
DECANTER	\$30.00	CRUSHED FRUIT JAR	\$30.00
VASES (UNDER 12 IN.)	\$25.00	LAVENDER JAR	\$20-30.00

ALL OTHERS WRITE FOR QUOTE

SHIP TO: CARLISLE & ASSOCIATES
28220 LAMONG ROAD, DEPT. C
SHERIDAN IN 46069
(317) 758-5767 AFTER 6:00 P.M.

DEALERS



DIRECTORY

NOTE: When writing to the Dealers listed here, please enclose a SASE!

<p>DAUGHERTY'S ANTIQUES Jerry and Shirley Antiques and Collectibles * Mostly Glass Shows & Mail Orders 2515 Cheshire No. 402-423-7426 Evenings Lincoln NE 68512</p>	<p>BENICIA ANTIQUE SHOP 305 First Street Benicia, California 94510 OPEN 11 AM - 5 PM Closed Monday Z. E. LOPES 707-745-0978 VISIT HISTORIC BENICIA and its 28 shops Off Interstate 80 North of San Francisco</p>	<p>THE MUTED SWAN ANTIQUES 5486 Peachtree Rd. Chamblee, GA 30341 Heart of Chamblee Antique Row Specializing in Cambridge, Heisey and Fostoria Bill & Pat Miller 404-451-7620</p>
<p>MILBRA'S CRYSTAL MATCHING P.O. Box 363, Rio Vista, TX 76093 Milbra Long 817-645-6066 FOSTORIA * CAMBRIDGE * HEISEY TIFFIN, LENOX, OTHERS BUY AND SELL</p>	<p>ANTIQUE ON THE MALL SPECIALIZING IN CAMBRIDGE GLASS Bogart's - Bldg #3 - Norwich, OH Virginia Bennett 614-432-4483 64183 Warne Drive, Cambridge, OH 43725</p>	<p>ARMORY ANTIQUES 168 West Main Street Plain City, OH 43064 QUALITY THINGS Cambridge, Heisey, China, Silver, Furniture Mon-Sat 10-5 VISA/MC 614-873-4890</p>
<p>THE GLASS URN 456 West Main Street, Suite G Mesa, AZ 85201 602-833-2702 Mail Order Shows Open Shop CAMBRIDGE, FOSTORIA, HEISEY, ETC.</p>	<p>ANTIQUE ON THE MALL SPECIALIZING IN CAMBRIDGE GLASS Bogart's - Bldg #3 - Norwich, OH Virginia Bennett 614-432-4483 64183 Warne Drive, Cambridge, OH 43725</p>	<p>GATEWAY ANTIQUE MALL, INC. JUST NW OF MINNEAPOLIS-ST PAUL, MN NE Corner Intersection of I-94/101, Rogers, MN (Look for our High Sign) 50 Dealers 7 Days, 10-6 612-428-8286 ELAINE STORCK, DIRECTOR</p>
<p>ETTELMAN'S DISCONTINUED CHINA & CRYSTAL Cambridge a Speciality P.O.Box 6491-CB Corpus Christi TX 78466 Phone 512-888-8391 Include S.A.S.E.</p>	<p>D & D ANTIQUES Columbus, Ohio Dick Slifko SHOWS ONLY</p>	<p>RONI SIONAKIDES 6565 W. Herbison Rd. DeWitt, MI 48820 517-669-5981 Fostoria, Tiffin, Duncan, Cambridge</p>
<p>THE GLASS CUPBOARD P. O. Box 652 West End, North Carolina 27376 Marcia Ellis Cambridge, Duncan, Heisey 919-673-2884 Shows, Mail Order</p>	<p>JUDY'S ANTIQUES Judy Bennett 422 S. Ninth Street (Corner of Jefferson) Cambridge, Ohio 43725 BUYING Ph.614-432-5855 SELLING CAMBRIDGE GLASS MY SPECIALTY</p>	<p>"HAPPINESS IS" Buddy and Kathy Stultz 3106 Warren Court, Glen Allen, VA 23060 804-672-8102 Specializing in American Made Glass We Buy & Sell, Shows & Mail Order</p>
<p>ELEGANT GLASSWARE Barbara & Cindy Brock Rt. 1, Box 66AC, Callands, VA 24530 804-724-6762 Cambridge - Heisey - Duncan - Fostoria</p>	<p>GREEN ACRES FARM 2678 Hazelton Etna Rd., Pataskala, OH 43062 (State Route 310 North) Sat & Sun 1-7 PM 614-927-1882 Antiques, Crystal Glass and Collectibles</p>	<p>YOU CAN ADVERTISE YOUR ANTIQUE SHOP HERE!</p>
<p>YOU CAN ADVERTISE YOUR ANTIQUE SHOP HERE!</p>	<p>FLORENCE SOLITO 54 Old Stafford Rd, Tolland CT 06084 Stock All Elegant Glassware Mail Order Since 1978 Send Wants 203-872-3294 Satisfaction Guaranteed</p>	<p>CRYSTAL LADY 1817 Vinton St., Omaha, NE 68108 Joann D. Hagerty Bus. 402-341-0643 Res. 402-391-6730 Specializing in Elegant Glass & Collectibles</p>
<p>YOU CAN ADVERTISE YOUR ANTIQUE SHOP HERE!</p>	<p>REMEMBRANCES 7597 Daphne Dr., No. Syracuse NY 13212 Shirley S. Ladouceur 315-458-5297 ANTIQUES and COLLECTIBLES MAIL ORDER SHOWS APPOINTMENTS</p>	<p>MARGARET LANE ANTIQUES 2 E. Main St., New Concord, OH 43762 Lynn Welker 614-826-7414 Cambridge Glass Matching Service Hours Mon-Fri 10-12AM, 1-5PM or by Appointment</p>
<p>GLASS RESTORATION BRILLIANT DON & LYNNE CRYSTAL WORMLAND ELEGANT MT. CLEMENS, MICH DEPRESSION 313-468-3519</p>	<p>WATKINS (Fine Quality) CAMBRIDGE GLASS SHOP 1429 Marquand Ave. (Corner of Woodlawn) Cambridge, OH 614-432-4460 Lana Watkins</p>	<p>HELEN & JIM KENNON Heisey, Cambridge, Fostoria, Duncan, Imperial, Fenton, Tiffin P.O. Box 114, Brookville, OH 45309 PH: 513-833-5406 SHOWS ONLY</p>



National Cambridge Collectors, Inc.
P. O. Box 416, CAMBRIDGE, OHIO 43725-0416

A nonprofit organization dedicated to the preservation and study of Cambridge Glass

You Are Cordially Invited
To Become A Member of

NATIONAL CAMBRIDGE COLLECTORS, INC.

Benefits derived from membership include: receipt of our club publication, The Cambridge CRYSTAL BALL; informative Quarterly Meetings; Antique shows; Auctions; other special events; and unlimited admission to the museum.

The Cambridge CRYSTAL BALL is published the first of each month. This newsletter contains educational and interesting articles, questions and answers, information on reproductions and reissues, notices of all club functions, classified advertisements, dealers directory, and many other features of interest to collectors of Cambridge Glass.

Yearly dues are \$17.00 for individual Members and \$3.00 for each Associate Member. \$12.00 of the \$17.00 annual dues is for a 1 year subscription to the Cambridge CRYSTAL BALL. All members have voting rights, but only one issue of the CRYSTAL BALL will be mailed per household.

Name (please print) _____ \$17.00

Mailing Address _____

City _____ State _____ Zip + 4 _____

Associate Members: (Must be at least 12 years of age and living in the same household.)

1. Name _____

2. Name _____

3. Name _____

Total number of Associate Members _____ @ \$3.00 each \$ _____

TOTAL AMOUNT ENCLOSED: \$ _____

Please make check payable to: NATIONAL CAMBRIDGE COLLECTORS, INC.

Recommended by _____

Membership Renewal Notice

This is your last issue of the *CRYSTAL BALL*, if the date on your address label reads 12/93.

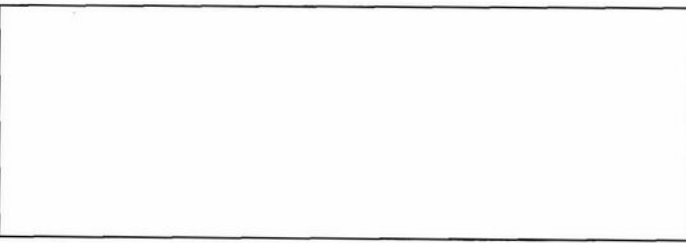
Please renew now!

National Cambridge Collectors, Inc.
P.O.Box 416, Cambridge, Ohio 43725-0416

NON PROFIT ORGANIZATION
U. S. POSTAGE PAID
Dayton, OH Permit #974

FORWARDING AND RETURN POSTAGE GUARANTEED

PLEASE DELIVER PROMPTLY, DATED MATERIAL.



NCC Museum is closed for the winter season. It will reopen March 4, 1994.