



# Cambridge Crystal Ball

Published monthly by the National Cambridge Collectors, Inc.  
to encourage and report the discovery of the elegant and boundless product  
of the Cambridge Glass Company of Cambridge, Ohio

Issue No. 230

June 1992

## CONVENTION SPEAKERS

Once again, National Cambridge Collectors is proud to announce that we have, as our Convention Speakers, two gentlemen who are very well known and knowledgeable in the field of collectible glassware. Both men have spoken to us previously and were so well received that it was only fitting we ask them for a return visit. Be sure your Registration form is returned to reach us no later than JUNE 15th. You won't want to miss a word that these two gentlemen have to say!

### BANQUET SPEAKER



**DR. JAMES S. MEASELL**

It has been ten years since we had the privilege of listening to Dr. James S. Measell speak to us on the subject of "There's More to Glass Collecting than Just Collecting Glass." Although this will be the title of his talk again this year, you will not be hearing the same speech. This subject is almost limitless in scope and Dr. Measell has a way of speaking that is both fascinating and entertaining, as well as educational.

A teacher of Speech Communication at Wayne State University in Detroit. Dr.

Measell is also Director of Glass History Research for Antique Publications.

Dr. Measell has authored, co-authored, and edited a total of ten books pertaining to such subjects as: Greentown, Findlay, Northwood, Iridescent, Fenton and Dugan/Diamond glass. In addition he has also written articles for such publications as: Glass Collectors Digest; Antique Trader, Hobbies; and other publications, including five articles for the Cambridge CRYSTAL BALL.

A distinguished speaker, he has spoken to many organizations on the topic of Greentown, Findlay and Northwood glass. These include: Corning Museum of Glass; Henry Ford Museum Col. Club; Great Lakes D. G. Club; Nat'l. Duncan Glass; Nat'l. Early American Glass; Fenton Art Glass Col.; Glass Col. of Toledo; Stretch Glass Soc.; Fry Glass Soc.; and the American Carnival Glass Assoc.

We are indeed fortunate that Dr. Measell has accepted our invitation to speak with us.

continued on page 3

# Cambridge Crystal Ball

Official Publication of National Cambridge Collectors, Inc. a non-profit corporation with tax exempt status. Published once a month for the benefit of its members.

Membership is available for individual members at \$15 per year and additional members (12 years of age and residing in household) at \$3 each. All members have voting rights, but only one *Crystal Ball* will be mailed per household.

Back issues of the *Crystal Ball* are available (beginning with Issue No. 1, May 1973) for members only. Cost: \$1.00 each or 12 issues for \$10.00.

## 1991-92 Officers & Committee Chairpersons

President	Joy R. McFadden
Vice-President	Marybelle Moorehead
Secretary	David B. Rankin
Treasurer	David B. Rankin
Sergeant-at-Arms	Judy Momirov
Acquisitions	Joe Andrejak
Budget & Finance	David B. Rankin
By-Laws	Marybelle Moorehead
Convention Facilities	J. D. Hanes, Judy Momirov
Membership	Phyllis D. Smith
Museum---Facilities	Doyle Hanes
Museum---Interior	J. D. Hanes
Non-Glass Items	J. D. Hanes
Nominating	Mark A. Nye
Program	Cynthia A. Arent
Project	R. Clarke West
Publications	Mark A. Nye
Public Relations	Phyllis D. Smith
Publicity	Cynthia A. Arent
Study Group Advisor	Judy Momirov
1992 Auction	Lynn M. Welker
1992 Antique Show	Mary Beth Hackett
1992 Convention	Marybelle Moorehead
1992 Flea Market	Marlene & Harold Snyder
Crystal Ball Editor	Phyllis D. Smith

## Classified Advertising Rates

10 cents per word \$2.00 Minimum  
We cannot mix type size in classified advertisements. Abbreviations and initials will count as words. Payment in full must accompany all ads.

## Display Advertising Rates

(Camera-ready ads preferred)	Members	Non-Members
1/8 page	\$6.00	\$10.00
1/4 page	10.00	15.00
1/2 page	18.00	25.00
3/4 page	25.00	35.00
Full page	33.00	45.00

## Dealers Directory

Five-line maximum \$18.00 for 12 months

Cambridge *Crystal Ball* assumes no responsibility for items advertised and will not be responsible for errors in price, description or other information.

Advertising copy, articles, club news and notices must be in our hand by the 10th of each month to assure publication in our next issue.

Paid advertisements containing reproductions or new glass will not knowingly be accepted for publication.

Opinions or information stated in any signed article or letter printed in the *Crystal Ball* are those of the authors and may or may not agree with National Cambridge Collectors, Inc. The Editor reserves the right to refuse and to edit any material submitted for publication to conform with the editorial style of the *Crystal Ball*.

## Please Address All Correspondence to:

National Cambridge Collectors, Inc.  
P.O. Box 416, Cambridge, Ohio 43725  
President -- Joy R. McFadden 614/885-2726  
Secretary -- David B. Rankin 513/833-4626  
Editor -- Phyllis Smith 513/323-3888  
N.C.C. Museum -- 614/432-4245

Please notify us immediately of any change in your address.

Please enclose an SASE when requesting information.

# CAMBRIDGE GLASS BOOKS FOR SALE

By National Cambridge Collectors, Inc.

- **Colors in Cambridge Glass \***  
128 pages, 60 color plates, fully indexed  
Hardbound with price guide. . . . . \$19.95
  - **1930-34 Cambridge Glass Company Catalog Reprint \***  
250-page reprint of original catalog  
Paperback with price guide. . . . . \$14.95
  - **1949-53 Cambridge Glass Company Catalog Reprint \***  
300-page reprint of original catalog  
Paperback with price guide. . . . . \$14.95
  - **1956-58 Cambridge Glass Company Catalog Reprint \***  
164-page reprint of original catalog  
Paperback. . . . . \$6.95
- \* For NCC members only, the above publications are available at a 10 percent discount.

By Bill and Phyllis Smith

- **Cambridge Glass 1927-1929**  
66-page reprint of original catalog  
Paperback w/identification guide. . . . . \$7.95

By Cambridge Buffs Study Group

- **Nearcut**  
108-page reprint of 1910 Cambridge catalog  
Paperback with price guide. . . . . \$9.95
- **Price Guide**  
Updated price guide for Nearcut Catalog  
reprint (including postage). . . . . \$3.00

By Mark A. Nye

- **Cambridge Rose Point**  
94 pages, fully indexed  
Paperback with value guide. . . . . \$12.95
- **Value Guide**  
Updated value guide for Rose Point book  
(including postage). . . . . \$5.00

By Mary, Lyle and Lynn Welker

- **Cambridge Glass Company**  
120 pages of reprints from eight old catalogs  
Paperback. . . . . \$10.00
- **Cambridge, Ohio Glass in Color II**  
Spiralbound. . . . . \$5.95

By Harold and Judy Bennett

- **1903 Cambridge Glass Company Catalog Reprint**  
106-page reprint of an original catalog  
Paperback. . . . . \$7.50

## Address your orders to:

Books  
National Cambridge Collectors, Inc.  
P.O. Box 416  
Cambridge, OH 43725

Please add postage and handling to your order (first book, \$2.00; each additional book, 50 cents), Ohio residents add 6 percent state sales tax.

Dealer discounts available - please write!

# President's Message

JUNE! This is my last chance to remind you to get busy. Your Registration for the 1992 Convention functions is due by JUNE 15th; and your Ballots for the Board of Directors are due by JUNE 19th.

Cindy, Tarzan, Marybelle and Georgia are running for the three available positions on the Board of Directors. Read the resumes in the May 1992 CRYSTAL BALL and make your selections.

June is such an exciting time in glass country. You can't go wrong. Just check the CRYSTAL BALL ads. June 12 - 14 is the Morgantown Collectors Convention in Morgantown, West Virginia; and the Fostoria Glass Society Convention in Moundsville, West Virginia. On the 13th and 14th Imperial Glass Collectors have their Convention in St. Clairsville, Ohio. June 18 thru 21 the Heisey Collectors of America host their Convention in Newark, Ohio. The Tiffin Glass Collectors Club will meet June 26 thru 28 in Tiffin, Ohio and last, but definitely not least, the National Cambridge Collectors will converge on Cambridge, Ohio June 26, 27 and 28.

July will continue the Convention season with the National Depression Glass Convention to be held July 11 and 12 in Tulsa, Oklahoma and the National Duncan Glass Society Convention to be held July 18 and 19 in Washington, Pennsylvania. The last glass convention is Fenton Art Glass Collectors of America, Inc., on August 4 thru 7 in Parkersburg & Williams-town, West Virginia.

I will look forward to meeting and greeting each of you at the Cambridge convention.

JOY

SPEAKERS . . . . . continued from page 1

## SATURDAY BREAKFAST SPEAKER

Mark Nye has been a guest speaker at our Conventions more than once. In 1985 he was our Banquet speaker and his topic was "Those Were The Years." In 1986 he spoke during the Saturday breakfast and his subject was "Whats New in the Cambridge Showroom." This year he will speak to us during the Saturday morning breakfast and his topic will be "The Glass Menagerie," in keeping with our Convention theme of "Cambridge Novelties."

Mark is well known to Cambridge collectors throughout the country. He has written articles on Cambridge glass for The DAZE, the CRYSTAL BALL, and the Glass Review magazine. Beginning in 1981, he has contributed over 100 articles to the CRYSTAL BALL.



MARK A. NYE  
Saturday Breakfast Speaker

Mark has also written two books pertaining to Cambridge. "Cambridge Stemware" in 1985 and "Rosepoint" in 1989. He completed an updated Value Guide for the Rosepoint book this year. Currently he is working on a Caprice book and an updated version of his Stemware book.

Joining N.C.C. in 1978, Mark was elected to the Board of Directors in 1986 and again in 1990. He was elected vice-president in 1986 and 1987, and president 1988 thru June 1991. He has served three years as Convention chairman; and has been a member of the Museum, Acquisitions, Nominating and several other committees.

Mark is single and makes his home in Miami, Florida. He spends quite a bit of his time travelling and guesting at glass shows all over the country. During these guest appearances, he always promotes N.C.C.

---

Attending this year's Convention will prove to be educational as well as entertaining. If you haven't sent your Registration form in, please do not wait any longer.

## DEADLINE FOR CONVENTION REGISTRATION

JUNE 15TH  
Must be received by this date!

---

## DEADLINE FOR RETURNING BALLOT(s)

JUNE 19th  
Must be received by this date!

---

NATIONAL CAMBRIDGE COLLECTORS, INC.

19th ANNUAL CONVENTION  
June 25 - 28, 1992

TENTATIVE SCHEDULE of EVENTS

---

THURSDAY - June 25th

- 10:00 am - Convention Office Opens at the MUSEUM. Registration packets available for pick up.
- 4:00 pm - Convention office closes.
- 7:00 pm - Convention Chairman's Reception at the MUSEUM. Refreshments. Registration Required. Casual Dress.

FRIDAY - June 26th

- 10:00 am - Convention Office Opens at the MUSEUM. Registration packets available for pick up.  
Rest of the day to yourself to discover Cambridge and the surrounding area. Maybe a trip to Fenton, Mosser, Boyd's or one of the many antique shops in the area.
- 4:00 pm - Convention Office Closes.
- 4:30 pm - Registration packets can be picked up at Civic Center.
- 5:00 pm - ANTIQUE SHOW Opens. Name Tag REQUIRED. Closes at 8 pm.
- 8:15 pm - Opening Session at the Civic Center. Cash Bar, Dinner, Announcements, Mini-Auction. Name tag REQUIRED.

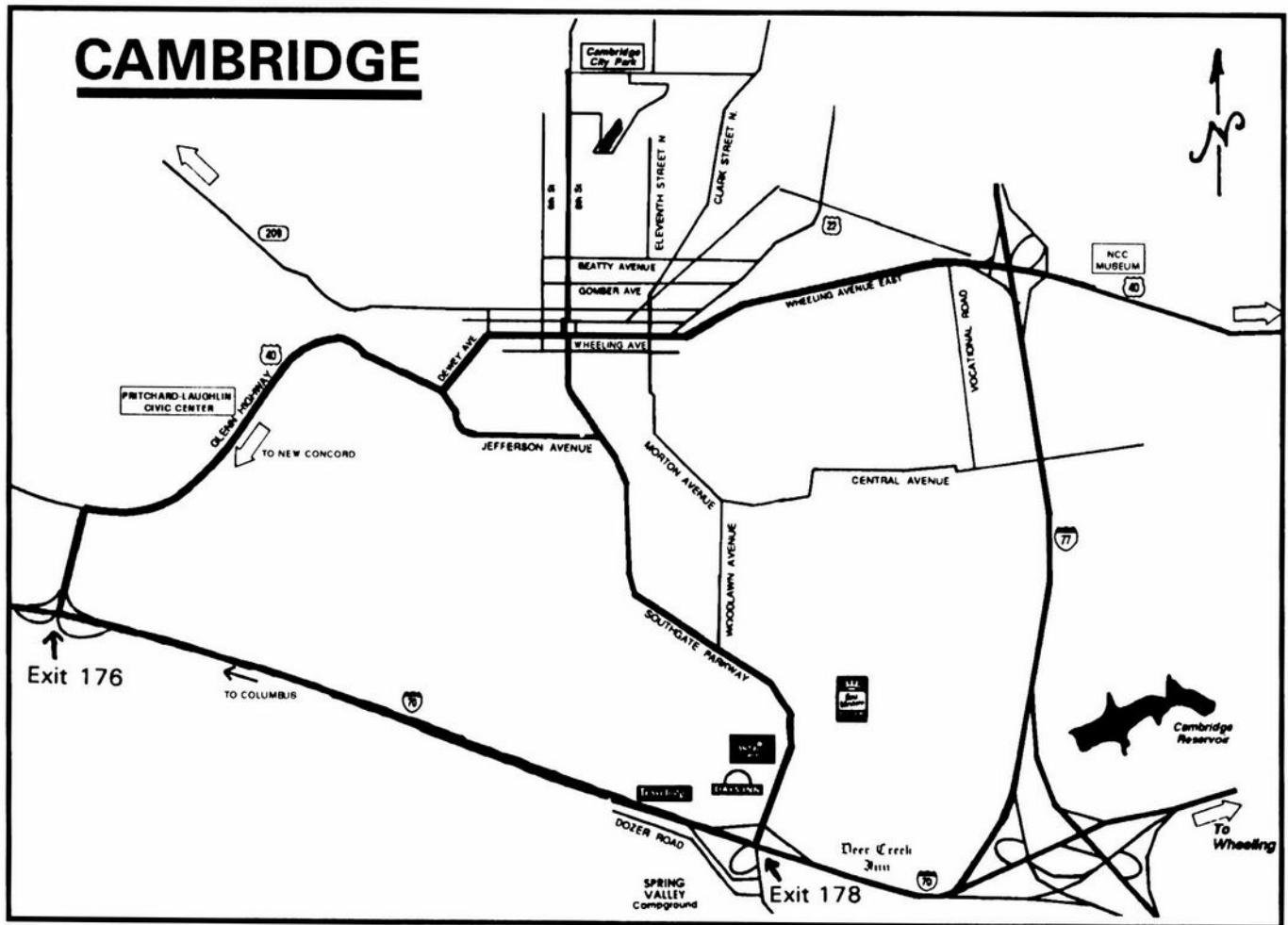
SATURDAY - June 27th

- 4:30 - 6 am - Flea Market set up. DEALERS ONLY!  
At City Park Large Pavilion.
- 6:00 am - Flea Market Opens to Early Bird shoppers. Admission Fee.
- 7:00 am - Flea Market opens to regular shoppers. Admission Fee.
- 8:00 am - Buffet Breakfast at Civic Center. Name Tag REQUIRED.
- 9:15 am - Saturday Morning Program.  
Speaker: Mark Nye. Topic: "The Glass Menagerie."
- 11:00 am - Antique Show Opens. Closes at 5:30 pm.  
Registration packets can be picked up at ticket booth.
- 12:01 pm - Slide Program. Conference rooms.
- 3:00 pm - Show and Tell. Leader Lynn Welker.  
Bring your interesting or unidentified items for discussion.
- 6:30 pm - President's Reception - Civic Center Galleria. Cash Bar.
- 7:00 pm - Annual Banquet. Name Tag REQUIRED.  
Speaker: Dr. James S. Measell. Topic: "There's More to Glass Collecting than Just Collecting Glass."

SUNDAY - June 28th

- 8:00 am - Buffet Breakfast at Civic Center. Name Tag REQUIRED.  
N.C.C. Annual Meeting to follow.
- 11:00 am - Antique Show reopens. Closes at 4 pm.
- 1:30 pm - Former Cambridge Glass Workers Reunion.  
At the N.C.C. Museum. Phyllis Smith, Leader.





## DIRECTIONS TO THE PRITCHARD-LAUGHLIN CIVIC CENTER

by J. D. HANES

Following are different routes that members can use to get to the Pritchard-Laughlin Civic Center from the Motels on Southgate Parkway. These routes are listed in the order of the easiest and least confusing ways to travel. See the map for clarification. A map will also be included in your Convention packet.

**ROUTE #1** - From Southgate Parkway enter I-70 W toward Columbus. Take the next Exit (#176 U.S. 40), turn right and go to the traffic light. At the light, turn right again. It is approximately 1/2 mile to the Civic Center, which will be on your left.

**ROUTE #2** - Go North on Southgate Parkway toward Cambridge. This will dead-end in front of the Guernsey County Courthouse (Wheeling Avenue). Turn left on Wheeling and follow the signs for U.S. 40 West. At the 3rd traffic light turn left over the viaduct bridge (Dewey Avenue). At the next stop sign, turn right. Continue approximately 1 mile to the Civic

Center which will be on your right, just past the State Highway Patrol barracks.

**ROUTE #3** - Go North on Southgate Parkway toward Cambridge. At Jefferson Avenue, turn left (this is about 1/8 mile beyond the traffic light at Bruney-LaMarca Motors). Follow Jefferson Avenue to the 4th stop sign. This will be the intersection of Dewey Avenue and U.S. 40. Go straight thru the intersection onto U.S.40 W. Continue approximately 1 mile to the Civic Center which will be on your right, just past the State Highway Patrol barracks.

For those of you not staying in Cambridge for the Convention, but will be attending the Antique Show, use I-70 East or West. Use Exit #176 and follow the directions given in ROUTE #1.

If you need further clarification on these routes, write to the Club P.O. box, or phone the Museum at 614/432-4245.

# Museum Moments

by J. D. HANES

As I write this in early May, I have been watching the events unfold in the Los Angeles area. I do hope that all of our members who live in that area have not been harmed by the outbreaks of violence.

Now on to other things. It doesn't seem possible that when you read this the Convention will be about three weeks away. Time can sure fly!

On the thought of Convention, if you are bringing a glass donation for the Museum, would you please give it to a member of the Museum Interior committee. Those on the committee are: Marybelle Moorehead, Lynn Welker, Shirley Beynon, Jeff Ross and J.D. Hanes. By doing this, you will be given a temporary receipt and be assured that you will receive full and proper credit for your donation. This will also reduce confusion and the possibility that an item could be misplaced.

I am looking forward to seeing all of you at the Convention and hope to meet those of you whose names are familiar, but not the face. We hope you will like the new exterior of the Museum, as well as the changes the committee has made to the interior.

In April we were visited by Brook and Barbara Elliot. They are a husband and wife team of free-lance travel writers from Richmond, Kentucky. They have had articles in many national publications, such as: Ladies Home Journal, Sports Afield, and Outdoor Life. The article they were working on is, What to See and Do Along the Old National Road. This article will be in the magazines: Touring America and Highways. They spent about two hours at the Museum and mold storage building. We had a great time talking about the club, museum and glass. It will be nice getting some more national exposure for the Museum and the club.

A very nice donation to the Museum has been received and it was hoped that we would have a photo to go with this article, but none turned out good enough to use. Dr. and Mrs. Thomas Swan of Cambridge called to ask if we would be interested in a picture of the factory. Of course the answer was yes. I figured it would be a small one like in some

of the catalogs, but did I get a surprise! What they brought is a drawing type picture of the factory, in the original frame, and it is approximately 15" x 30" in size. Dr. Swan had a patient give him the picture to display in his office. Since Dr. Swan is retiring, he thought that it should be put in another place where many people could enjoy it, and thought of us. Please make sure to see it the next time you are at the Museum. We have placed it next to the insurance floor plan drawing, to make a nice display, of both the inside and the outside of the factory.

In closing, let me wish you all safe travel to the Convention. It promises to be one of the best ever! Hope you all enjoy it.

---

## MUSEUM FIELD TRIP

by CINDY ARENT

Approximately 200 fifth grade students from the Rolling Hills School district toured the N.C.C. Museum and storage building in March.



Future collectors line up to tour the N.C.C. Museum. These 5th graders had studied the art of glassmaking before the field trip. Note the new siding on the exterior of the Museum.

During the day they also visited the Longaberger Basket Company factory and had lunch at the Market House Inn in Zanesville.

In preparation for the field trip, J.D. Hanes had visited each of the elementary schools to talk with the students about Cambridge glass. Art instructors, Ginger Rutter and John Grimes, had also shown "The Crystal Lady" video, which the students received with much interest. The tape had been donated to the school district by the N.C.C., at the request of the art department.

continued on page 14

# WORKER OF THE MONTH

by JEFF ROSS

Our April Worker of the Month was Nettie Bohannon. Nettie worked in the Paint Shop of the Etching Department for 16 years. Her job entailed painting the wax onto the glass in preparation for the acid dip.



NETTIE BOHANNON

Nettie described her first day of work at Cambridge Glass as a bitterly cold morning in 1933. Like many of the workers who lived south of Cambridge in the communities of Byesville and Pleasant City, Nettie relied on the bus to get her to the plant. She recalled that she caught the bus at 5:30 a.m. every morning in order to be at work by the 6:45 a.m. start time.

She was hired by Mr. Roy Pritchard, head of the Decorating Department, to work in the Etching Department. She stated that it took her about a month to get comfortable with working with the wax due to the varying etching patterns and the different consistencies of the wax. Larger pieces required the wax to be thick, while other smaller items were painted with thinner wax. The area to be covered was the determining factor.

Nettie described the paint shop as a series of tables where the women would sit across from one another to work. Each woman had heat controls to regulate the temperature and thickness of the wax. Each worker was provided with a basic 1" brush, but any other brushes needed were the responsibility of the individual worker. Nettie recalled

that it took six to eight brushes of various sizes to do the job.

Most of the ware that she worked with was crystal. Occasionally she helped with sample pieces to be used at trade shows, etc. Rosepoint was the easiest pattern to cover according to Nettie. She mentioned that she could cover about 20 Rosepoint stems in an hour. Elaine and Candlelight were the most difficult. Covering the Caprice pattern for the Alpine treatment was also a tedious task, according to Nettie. She recalled that one woman in the department did nothing but Alpine.

The women in the paint shop were on an hourly wage. Nettie started at 40¢ an hour and when she left 16 years later, she was making one dollar an hour. Some positions in the Etching Department were on a piece rate system. Nettie stated that all of the painters were women, as were most of the 120 positions in the Etching Department.

Although Nettie enjoyed her work, she said that most days she spent her 40 minute lunch hour at the employee cafeteria to "get away" from the factory. The work was tedious and she thought that she did better when she got away from it for awhile. Nettie stated that Mr. Pritchard was "A-1" to work for, as were the other supervisors.

There were only two regrets that Nettie expressed. The first was that she didn't buy more glass when she worked at the factory. But, as she said, money was scarce and no one realized how valuable the ware would become. At the time, it was a job and a livelihood.

The second regret was that in all of the time that she worked at the plant, she never did tour the entire factory. At the time, she and most others thought that there would always be a Cambridge Glass plant to tour.

We appreciate the time that Nettie took to be with us in April. Her comments and experiences were a valuable addition to our living library of Former Workers.



# NOVELTY ITEMS

## PART IV

by MARK A. NYE

The Cambridge "General Catalog of Pressed and Iron Mold Blown Glassware" issued circa 1917-1918 contained several pages of novelty items. Not all of these pages were labeled as Novelties, but on those that were not, the items shown are, without question, novelties.

On the following page, entitled "Near Cut Novelties and Kitchen Utensils" a wide variety of items were illustrated. While some of the items shown were, without question, of Cambridge origin (for example the Bennett juice extractors), others were no doubt made using molds first used by other factories. In the latter category are such items as the glass hatchet, glass tomahawk and the measuring jug with glass funnel cover. These molds could have been brought to Cambridge from other factories in the National Glass Company consortium at the time of its founding or shortly thereafter.

With the exception of the juice extractors, most of the items seen on this page are seldom found today, partly because they are virtually impossible to identify as being of Cambridge origins. For instance, looking at the "handy funnel" or the coffee percolator top illustrations, would you recognize either of these as being Cambridge?

The big question about this page is which items Cambridge considered novelties and which are simply kitchen utensils. Most certainly the hatchet and tomahawk are novelties; and I would call the measuring jug with glass funnel cover a novelty. On the other hand, by no stretch of the imagination could such items as finger bowls and measuring cups be called novelties. Debatable items include the castor cups or stove rests, and the glass fork and spoon.

The fate of all the molds used to produce the items seen on this has yet to be determined. It is known the molds for the Cambridge and Boston measuring cups were destroyed during the early 1940s, as were those used to produce the #2560 hatchet and the egg separator.

A page with the heading "No. 2699 Fancy Novelties" (see page 10) illustrated five items

from the Buzz Saw line. While at first glance these might not be thought of as novelties, a closer look reveals that three of the items are assembled using the other three; and that is probably the reason Cambridge referred to them as novelties. Catalog No. 10, issued approximately two years later, did not refer to these pieces as novelties and simply included them with the balance of the Buzz Saw line.

The third page (page 11) labeled as showing novelties, this one captioned "Near Cut Novelties and Specials," presents a problem. What are the novelties? The tube and bud vases are unique in their shapes; a claret jug is certainly not a common item, nor are cigar band trays. Do these qualify as novelties? Yes, they probably do.

Figural glass candy containers are generally thought of as novelties, and in 1918 Cambridge was offering a wide selection. (see page 12) Not all of the items shown on this catalog page, entitled "Glass Containers" were for candy, however. Included among the 25 candy containers illustrated were: three jugs; the #2672 bottle candlestick; the dog and cat bottles; a bottle horn; and the #2827 4 oz. Sheaf of Wheat. Identified prior to its appearance on this catalog page, as a candy bottle, the Sheaf of Wheat was later identified, on a Cambridge factory list of molds destroyed, as a shaker. In this appearance, however, it was being promoted as a candy container.

During its early years, the Cambridge Glass Company issued a number of catalogs, both general and specialty, and not all of these are known today. Thus, we cannot be sure when the figural candy containers were first made. Those containers with item numbers in the #2600 and #2800 series are probably of Cambridge origin. That is, the molds were created by Cambridge, and most likely first made between 1915 and 1918. It is possible, however, these candy containers were in production prior to 1915. Whether or not all those containers that have no item number were designed by Cambridge has not been determined. It is very possible some of them were not.

continued on page 13



2560 Glass Hatchet.

Kitchen Spice Set. Clear Glass Jars, Nickel Plated Caps, Hard Wood Mission Rack, Letters put on in White Enamel, Each Set in corrugated Carton.

2674. Bennett Patented Lemon Extractor. Also made in large size.

2761. Orange or Grape Fruit Extractor.

2698. Bennett Patented Lemon Extractor.

2561. Glass Tomahawk.

2857. Regulation Size Glass Rolling Pin. Wood Screw Handle. Also made all Glass, 2858

2847. Finger Bowl.

Egg Separator.

Handy Funnel. Made in 2 and 4 oz. sizes.

Glass Spoon.

Glass Fork.

2586. Measuring Jug. With Glass Funnel Cover.

2847. Finger Bowl.

Boston Measuring Cup.

Cambridge Measuring Cup.

2641. Cigar Band, Ash or Stamp Trays. Made in 4½, 5½, 6½, 7½, 8½ in. sizes.

0141. Ash Tray.

2850. 4½ in. Ice Tea Plate.

2641. Butter or Cheese Plate and Cover.

2744. Large Hotel Oil or Catsup.

2752. Large Restaurant Oil.

2743. Square Hotel Oil.

2737. Finger Bowl. Star Bottom.

2738. Finger Bowl. Optic.

2590. Plain Star Bottom Nappy. All sizes.

2617. Finger Bowl.

2590. 5 in. Plain Plate for Finger Bowls, Custards and Sherbets.

1081 Oyster Cocktail, 2 Pieces.

2790. 4½ in. Coaster.

1082. Oyster Cocktail Glass.

2751. Coaster.

2849. 6 in. Finger Bowl Plate.

2849. Finger Bowl.

2807. Caster Cup or Stove Rest.

2855. Caster Cup or Stove Rest.

2557. Plain Dipper.

2846. Crimp Finger Bowl.

2787. Caster Cup or Stove Rest.

2856. Caster Cup or Stove Rest.

2556. Measuring Dipper.

Coffee Percolator Top.

Grape Fruit Liner.

2850. 3½ in. Nappy.

2754. Caster Cup or Stove Rest.



12 in. Orange Bowl and Foot.



Three-piece Epergne.



14 in. Two-piece Vase.



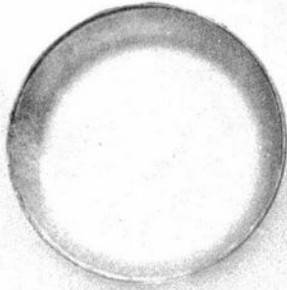
Two-piece Epergne.



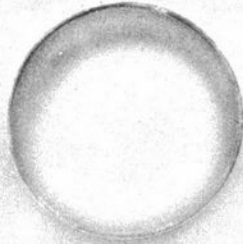
12 in. Fruit Bowl.



9 in. Sweet Pea Vase.



2375. 6 in. Cigar Band Tray.



2374. 5 in. Cigar Band Tray.



Cube Toothpick.  
Cut all over.



2960. Toothpick.



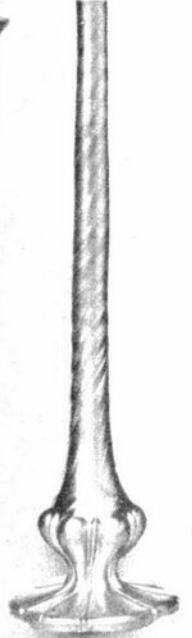
2889. 6 in. Candlestick.



2400  
Horseradish  
Jar, G/S



2370  
Tube Vase.  
Made in  
10, 12, 14 in. sizes



2361. Bud Vase.



2903  
Bed Room Bottle and Tumbler.



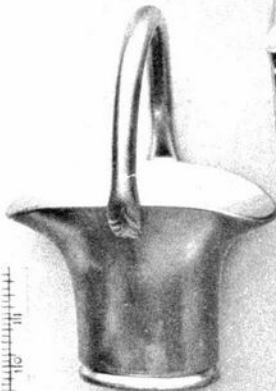
2376  
Bed Room Bottle and Tumbler.



0115. 2 lb. Square Butter Plate and Cover.  
For Refrigerator Use.



071. Cigarette Box and Cover.



082. Handled Basket.



2895. 7 1/8 in. Fern Dish. No Liner.



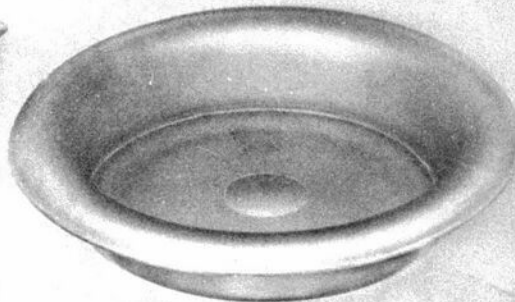
96. 1/2 Gal. Tankard, Optic.  
Metal Strainer Top.



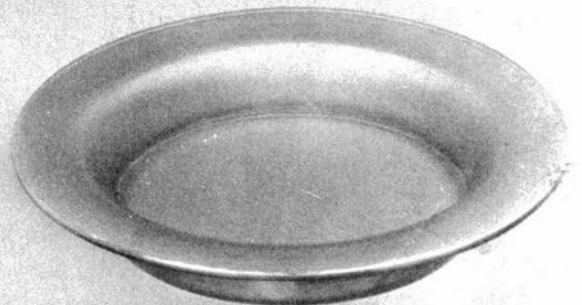
94. Claret Jug.



2881. 6 in. Footed Vase.



093. 11 in. Flower Bowl. Shape No. 3



093. 11 in. Flower Bowl. Shape No. 1





175. Candy Jar.  
4, 8 and 12 oz. sizes.



100. 4 oz.  
Extra Tall  
Candy Jar.



100  
Candy Jar,  
1/4, 1, 2, 4, 6, 8, 12,  
16 and 32 oz. sizes.



150. 12 oz.  
Candy Jar.



2630. 6 oz.  
Candy Jar.



2669. 4 oz. Jug.  
2675. 2 oz. Jug.



2667. 4 oz. Jug.  
2668. 2 oz. Jug.



Plain Jug.  
4 and 8 oz. sizes.



2 1/2 oz. Rabbit.



2828. 4 oz. On-the-Hog.



3 oz.  
Standing Elephant.



2830. 4 oz. Squirrel.



2 oz.  
Elk Tooth Bottle.



3 oz.  
Irishmen's Head.



3 oz. Tipperary Hat.



2838. 3 oz.  
Cambridge Automatic  
Revolver.



7 oz. U. S. Dreadnaught Boat.



1 1/2 oz. Battle Ship.



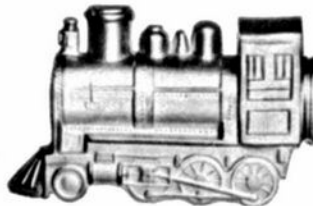
1 1/2 oz. Hobby Horse.



2842. 1 1/2 oz. Small Revolver.



3 oz. Air Ship.



2844 1/2. 3 oz. Large Engine.



2844. 1 1/2 oz. Small Engine.



2843. 5 1/2 oz. Large Revolver.



2814  
2 1/2 oz. Clock.



2616. 1 1/2 oz.  
Plain Candy Horn.



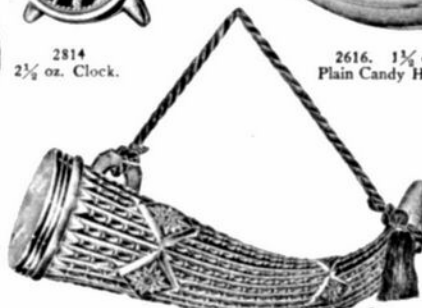
2845. 2 1/2 oz. Automobile.



2829. 3 1/2 oz. Owl.



Glass Dog and Cap.  
8 and 22 oz. sizes.



2833. Candy Horn.  
2 and 5 1/4 oz. sizes.



2827. 4 oz. Sheaf of Wheat.



2834. 5 1/4 oz. Bottle Horn.



2672. 5 oz. Bottle Candlestick.



NOVELTIES . . . . . continued from page 8

An early reference to four of the items: the Sheaf of Wheat, the Owl candy bottle; the On-the-Hog candy bottle; and the Squirrel candy bottle, contained the following note.

"Something Entirely New in Candy Bottles. As these are new and have never been made we can only estimate capacity. All fitted with Metal Screw Cap."

However, the reference, which comes from an unidentified source, was illustrated. Since the items had not been made, it is hard to tell what was used for the illustrations. Most likely it was the models from which the molds were made.

While Cambridge did make a glass clock body, purchase works and sell a glass clock (it also being a novelty item), this is not the clock shown on the glass container page. This clock is another of glass figural candy containers.

How long the figural candy containers, which were probably made mostly in crystal, remained in the Cambridge line, is not known. None of them appeared in Catalog No. 10, issued in 1920, or in later Cambridge catalogs. Not being illustrated in Catalog No. 10 does not necessarily mean all of the candy containers had been discontinued by 1920, but it is an indication. They were probably out of the Cambridge line by 1927 and at the latest by 1930.

The molds for the Tipperary Hat, the Sheaf of Wheat and the Revolvers, were destroyed during the early 1940s. The molds for the balance of the figural candy containers do not appear on the 1955 mold inventory list. It is unlikely they were overlooked during the inventory and thus were no longer in existence at the time the inventory was taken. As yet, it has not been determined if the molds were destroyed prior to 1940 or sometime during the middle to late 1940s.

In addition to the candy containers, several other novelty items also appeared on the same catalog page. The #2834 bottle horn is simply the large size candy horn with different top. The #2672 bottle candlestick was covered in the first article of this series; and the cat and dog bottles await a future article.

---

HAPPY FATHER'S DAY

## MOTEL INFORMATION

**BEST WESTERN CAMBRIDGE**  
1945 Southgate Parkway - Exit #178  
614/439-3581

\$49.00 single or double. No extra for children. One week cancellation notice

---

**CAMBRIDGE FAIRDALE INN**  
6405 Glenn Highway - Exit 176  
416/432-2304

\$25.00 single. \$30 double. No extra for children. One week cancellation notice.

---

**CAMBRIDGE TRAVELODGE**  
Southgate Parkway - Exit 178  
614/432-7375

10% off prevailing rate. One week cancellation notice.

---

**DAYS INN CAMBRIDGE**  
2328 Southgate Parkway - Exit 178  
614/432-5691

\$53.00 single, double, triple or Quad occupancy. Children free. Cancellation policy depends on type of reservation.

---

**DEER CREEK MOTEL AND RESTAURANT**  
2325 Southgate Parkway - Exit 178  
614/432-6391

For reservations: 1-800-637-2917  
\$27.95 single. \$33.95 double. \$5 extra per person. 24 hour cancellation notice.

---

**EL RANCHO**  
6653 Glenn Highway - Exit 176  
614/432-2373

\$32.50 single. \$39.50 double. Over age 12 \$3.00 extra. One week cancellation notice. Additional discount for Thursday-Saturday stay.

---

**HOLIDAY INN CAMBRIDGE**  
Southgate Parkway - Exit 178  
614/432-7313

\$49.00 single. \$53 double. No extra for children. One week cancellation notice.

---

Rates do not include 12% sales and bed tax. Mention N.C.C. for special rate.

---

# Study Club News

---

## STUDY GROUP #13 - SOUTH WEST OHIO "MIAMI VALLEY, OHIO"

The Miami Valley Study Group held their meeting April 14th at the Huber Heights Public Library. There were 11 members present.

Various items of business were discussed, including an update on the Etching book project. The program consisted of the showing of the film "The Crystal Lady."

Show & Tell produced the following pieces: crown tuscan pencil dog with paper label; crystal #3400 10" vase E/Rosepoint; blue bell #680 vanity compact; topaz perfume with a perfect dauber, hand painted and found in the original box; crystal Heisey candy jar bottom w/gold border E/619 (NOTE: this is a Cambridge etching which we have found documented on the etching plates). We also admired several unusual Heisey pieces, including: five trial blue stems; a crystal vase; and four pieces cut Churchill.

submitted by Sue Rankin

---

## STUDY GROUP #14 - CAMBRIDGE, OHIO "THE CAMBRIDGE CORDIALS" Contact person - Judy Momirov Phone: 614/432-2896

The Cambridge Cordials held their meeting April 25th at the home of Jeff Ross. There were nine members and three guests present.

Our special guest and former Cambridge Glass Company employee was Nettie Bohannon. She was employed in the etching department (see story on page 7). After talking with Mrs. Bohannon, discussion turned to glass, convention and mold cleaning.

Items on display for Show & Tell were: #523 one-bun Geisha w/flower frog base, in light emerald; #3121 cordial E/Rosepoint; crystal small Cambridge Square bowl made for the Vanadium Corporation; crystal bell E/Diane; Ribbon footed tall comport; #140 8½" center handled sandwich tray in light emerald, gold encrusted "Early Wildflower" (our groups name); Everglade vase in crown tuscan; #3051 5 oz. tumbler in amber w/gold encrusted Hunt Scene; azurite bowl w/iridescent exterior and early, crude, lily-of-the-valley etch; #3400/1

13" square bowl in ebony gold encrusted Gloria; #3500/64 10" 3-part relish in amber gold encrusted Diane and Chintz; #1102 3" cranberry in peach-blo E/Cleo; #3115 9 oz. goblet with topaz bowl and willow blue stem and foot E/#731; #3400/175 cocktail shaker etch Wildflower; #652 celery w/decalware flowers; unknown crystal goblet w/platinum band; and a W112 Sea Shell creamer in milk glass. Since Jeff and his family are dairy farmers, our group leader, Cindy Arent, thought this creamer would be an appropriate item, for meeting at the farm. However, we never did get her to go and milk a cow!

Our next meeting will be held on May 16th at 3 p.m. at the Museum storage building; and we will be working on cleaning and inventory of the molds.

submitted by J.D. Hanes

---

## MUSEUM . . . . . continued from page 6

The students toured the buildings in small groups. Charles Upton and Lynn Welker provided the fifth graders with a tour of the Museum and answered their questions about the glass exhibits. Mike Arent was stationed in the mold building where he explained how the various tools were used in the glass making process. The students showed interest in the glass press and the swan punch bowl mold. I'm sure you can also guess the other mold that drew a crown of boys . . . (#3011).

We hope that we have sparked a few future Cambridge Glass collectors. I can say that they definitely have a good background in the art of handmade glassware. We are very proud of the students and the art program in our school district.

---

## CAMBRIDGE GLASS ON DISPLAY

by BUD & ANNA WALKER

The Jones Museum of Glass & Ceramics, Sebago, Maine, is putting on a display of silver overlay and the Cambridge Glass Company is well represented.

We are pleased that our #3400/92 Ball jug in royal blue with silver overlay "Just a Little Swallow"; and our ebony cocktail shaker with silver Hunt Scene, will both be displayed. We understand that the Jones Museum is one of the finest glass museums in the country.

## WE NEED YOUR HELP

The Miami Valley Study Group needs your help in its efforts to produce a complete and comprehensive book on the etchings and decorates of the Cambridge Glass Company.

First, we need your help in verifying etching names and numbers. If you have advertising or other printed literature, not previously published by NCC, or pieces of glass with original factory labels identifying etchings or decorates, we would like to see it.

If you are planning to attend the NCC Convention, please bring the items with you. We will arrange to copy the information or photograph the pieces of glass and take rubbings of the etchings.

If you can't attend the Convention, please send us a GOOD copy of any literature, or the complete information from original factory labels along with a photograph of the piece and a rubbing of the etching.

Second, if you have an etching that you can't identify, bring it to the Convention or send us a rubbing and a good photo of the item. We will research it for possible inclusion in our book.

All information should be sent to Miami Valley Study Group, c/o Wollenhaupt, P. O. Box 303, Dayton, Ohio 45401

Be true to your work,  
your word and your friend.

Thoreau

## — Classified —

**WANT TO BUY:** Rosepoint #3106 stems. Write price and description. Nancy & Jim Finley, 816 South Barrett, Sedalia, MO 65301. Phone: (816) 826-5032 or 827-0101.

**N.C.C. FLEA MARKET:** June 27, 1992. Setup 4:30-6 am (Dealers ONLY). Early Bird admission will be \$5 from 6-7 am. General admission from 7 am - 12 noon. NEW LOCATION!! Cambridge City Park, Large Pavilion. For Contract or additional information, write to: **Marlene & Harold Snyder**, Flea Market Chairpersons, P.O. Box 416, Cambridge, OH 43725.

	FOSTORIA	HEISEY	
	<b>Old Morgantown Glass</b>		
	Collectors' Guild		
FRY			TIFFIN
	<b>3RD ANNUAL CONVENTION GLASS DISPLAY AND PREMIER SALE</b>		
	<b>June 12, 13, 14th St. Mary's Church Morgantown, WV I-79 exit 155, 1 mile</b>		
IMPERIAL	<b>FRI. 7-9 PM PREMIER SHOW &amp; SALE \$5.00 ADMISSION</b>		CONSOLIDATED
	<b>SAT. 9AM-5PM SHOW &amp; SALE \$2.50 ADMISSION</b>		
	<b>1-3PM EDUCATIONAL SEMINARS 6:30 CONVENTION BANQUET &amp; SILENT AUCTION</b>		
SENECA	<b>ADVANCE RESERVATIONS REQUIRED SUNDAY 12 NOON-4PM \$2.50 ADMISSION PARKING AT DOOR PUBLIC INVITED</b>		DUNCAN
	<b>INQUIRIES: OMGCG, BOX 894, MORGANTOWN, WV 26507</b>		
	MORGANTOWN CAMBRIDGE		

## — Classified —

**NEEDED:** Large punch bowl to fit on base of Slewed Horse Shoe (Radiant Daisy; U.S. Peacock). Made by U.S. Glass Co. Ref: Kamm 8-15. Must turn yellow under black light. **Berniece Lemaster**, 3212 Cabot Dr., #1, Anaheim, CA 92804. 714/827-2125.

**WANTED:** #3122 stems, etched Diane. (3) 9 oz. goblets; (1) 7 oz. tall sherbet; and (1) 3 oz. cocktail. **Therese Mattas**, 902 Ridge Square #118, Elk Grove Village, IL 60007.

## AN EXPRESSION OF SYMPATHY

JEAN L. DIENER  
Las Cruces, New Mexico  
died October 1991

N.C.C. sends condolence to Jean's husband William, other family members and friends.

# ISAACS ANTIQUES



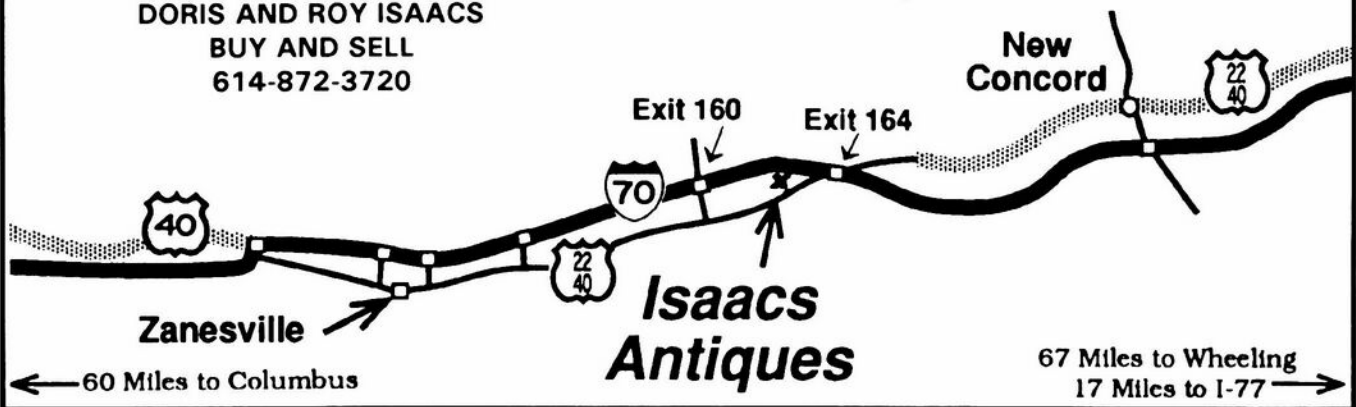
WE FEATURE GLASSWARE OF:  
CAMBRIDGE, HEISEY, FENTON & FOSTORIA  
Plus Art Pottery & a General Line of Antiques

**DORIS AND ROY ISAACS**  
BUY AND SELL  
614-872-3720

7525 East Pike  
Norwich, Ohio 43767  
614-872-3720

In East Pike Antique Complex - Rt. 40,  
One Mile West of I-70 Norwich Exit #164

**Hours 10 - 5:30 Mon. - Sat.**  
**12 - 5:30 Sun.**  
**Open Year Round**



**How to Find Those Missing Pieces.**

The world's largest source of discontinued and obsolete crystal -- as well as china and flatware -- Replacements, Ltd., buys and sells over 36,000 different patterns.

If you need a piece or several pieces to add to your collection ... or if you'd like to sell some unneeded extras ... call or write us. We can provide you with a complete printout of available pieces in your pattern. Or we'll let you know our prices for the pieces you wish to sell.

Replacements, Ltd.: a 100,000 square foot facility; 1.4 million pieces; over 600,000 satisfied customers. Contact us, or come see our showroom. Let us help you complete your collection ... or maybe you'll help add to ours.

**REPLACEMENTS, LTD.**

Call (919) 697-3000, FAX (919) 697-3100, or write:  
1099 Knox Road • P. O. Box 28029, Dept. C • Greensboro, NC 27420

**OVER 6800 CAMBRIDGE PIECES**

The **DAZE** INC.

\*SPECIAL OFFER to NCC friends \$2. off the 1 year subscription price when on this form or copy of

The Original National monthly newspaper dedicated to the buying, selling & collecting of colored glassware and china including Depression Glass and the Elegant Glass (Cambridge, Heisey, Fostoria, etc.) We educate and inform you each month with feature articles by top notch columnists, readers "finds", club happenings, show news and a multitude of ads. Find those missing pieces to your 30s, 40s or 50s pattern. Can't identify it? Perhaps we can help "Keep up with what's happening with a subscription to the DAZE. Buy, sell or trade from the convenience of your easy chair.

Name \_\_\_\_\_ Street \_\_\_\_\_

City \_\_\_\_\_ State \_\_\_\_\_ Zip \_\_\_\_\_

1 yr \$19    2 yrs \$37    \$2. Single Current Copy

Exp date \_\_\_\_\_ Card No. \_\_\_\_\_

Signature \_\_\_\_\_

Orders to D.G.D., Box 57NC, Otisville, MI 48463  
Please allow 30 days for your first issue - Canadian subscribers, add \$1 per year and subscribe by charge card only! This Special Offer may not be combined with any other special offer.



1992 TWELFTH ANNUAL

*Fostoria Glass Society*  
**CONVENTION  
SHOW & SALE**

**DELFT NORONA MUSEUM**

Eighth Street & Jefferson Avenue  
Moundsville, West Virginia

<b>Friday, June 12, 1992</b>	Premiere Admission \$4.00
Premiere Show and Sale	6:00 P.M. - 9:00 P.M.
<b>Saturday, June 13, 1992</b>	General Admission \$2.00
Show and Sale	11:00 A.M. - 5:00 P.M.
Glass Auction	6:00 P.M.
Vol. Fire Dept.	First Street Moundsville
	2 blocks East of Fostoria Glass Factory
<b>Sunday, June 14, 1992</b>	
Flea Market	10:00 A.M. - 2:00 P.M.
Show and Sale	11:00 A.M. - 4:00 P.M.

**Moundsville Chapter Flea Market**  
June 14th, 1992

Set-up 8:00 A.M. \$15 Per Couple Fee  
Early Buyer Fee \$15 Per Couple  
Free Admission at 10:00 A.M.  
Contact Ralph Wright - (304) 845-2748

For More Information Contact:

Fostoria Glass Society of America, Inc.  
P.O. Box 826 Moundsville, W. Va. 26041  
Or Call (304) 242-2720  
(304) 737-2006



16th ANNUAL  
**NATIONAL IMPERIAL  
GLASS COLLECTORS'  
SOCIETY  
CONVENTION**

Stone Crab / Hampton Inn • St. Clairsville, Ohio

**SHOW & SALE**

Saturday, June 13 • 1:00 p.m. to 5:00 p.m.

Sunday, June 14 • 12:00 noon to 4:00 p.m.

**Guest: Teri Steele, Editor / Publisher "DAZE"**  
**ADMISSION: \$2.00**

**SEMINAR**

Saturday, June 13 • 9:00 a.m. to 10:00 a.m.

**Open to public - FREE ADMISSION**  
**BANQUET & DISPLAYS**

**FOR INFORMATION, WRITE:**

**National Imperial Glass  
Collectors' Society, Inc.**

P.O. Box 534 - Bellaire, OH 43906

Or phone: (419) 637-2695,

(216) 481-3628 or (410) 995-1254

**HEISEY COLLECTORS OF AMERICA, INC.**

*presents*

*America Discovers Heisey*  
**1992 Convention**

*Discover Your Dreams*

**1992 Twenty-first Annual Antique Show and Sale**

*Discover the Beauty*

**Heisey Glass Display**

**OSUN-COTC Newark Campus**

Country Club Drive, Newark, OH

(Wednesday, June 17th Members only Weiner Roast)

**Thursday, June 18<sup>th</sup> 5 p.m. to 9 p.m.\***

\* Thursday Preview - Registered Members, \$7.00,

Non-registered Members and General Public, \$10.00.

**Friday, June 19<sup>th</sup> 12 Noon to 7 p.m.**

**Saturday, June 20<sup>th</sup> 12 Noon to 5 p.m.**

**Sunday, June 21<sup>st</sup> 12 Noon to 5 p.m.**

(Display open Friday June 19th, 11 a. m. until Noon, Dealers Only)

**Donations \$ 2.50**

**50 cents off with Ad**

*Benefits the National Heisey Glass Museum*

**TIFFIN GLASS COLLECTORS' CLUB**  
**7TH ANNUAL ANTIQUE SHOW AND SALE**

*Featuring "Tiffin" and other glass of the Depression Era*



**TIFFIN UNIVERSITY**

Gillmor Center

155 Miami Street

Tiffin, Ohio



Friday, June 26, 1992 - 7:00 p.m. to 9:00 p.m.

Premier Admission \$5.00

Saturday, June 27, 1992 - 10:00 a.m. to 5:00 p.m.

Sunday, June 28, 1992 - 11:00 a.m. to 4:00 p.m.

General Admission \$2.00 (Good Both Days)

For more information, call

(419) 447-4452



BOX 52572 • TULSA, OK 74152  
918 744-5409

MINT UNLESS NOTED - UPS & INS. EXTRA

CAPRICE

- #2 blue tall sherbet (10).....\$ 31
- #22 blue 8½" plate (3).....\$ 31
- #17 blue cup & saucer (3).....\$ 34
- #136 crystal 7" compot.....\$ 35
- #136 crystal alpine 7" compot...\$ 38
- #300 cryst 10 oz. ftd. tumb (4)...\$ 14

CAPRICE SCARCITIES

- Milk glass W90 3 oz. oil  
w/original stopper.....\$225
- 8½" pistachio plate (2).....\$ 39
- Pink cups (2) no saucers.....\$ 30
- 8½" blue alpine plates (2).....\$ 37
- #208 deep emer. grn. Dolphin ftd.  
box w/lid gold/white dec.....\$110

SWANS (ALL ARE "3RD GENERATION)

- Deep emerald green 8½".....\$165
- Light gold 8½".....\$155
- Milk glass 6½".....\$225
- Everglade #18 14" bl. swan plate.\$165

FIGURAL FLOWER FROGS

- Lt. blue 8½" Draped Lady.....\$375
- Frosted amber 13" Draped Lady....\$245
- Peach-blo 13" Draped Lady.....\$275
- Frosted cryst. 8½" Two-kids.....\$ 85

ELAINE GOLD ETCH #3500 STEM

- Goblet (6).....\$ 26
- Iced tea (3).....\$ 24
- Champagne (8).....\$ 20
- #3400 8" plate (6).....\$ 13

ROSEPOINT ETCH #3121 STEM

- Goblet (8).....\$ 34
- Iced tea (8).....\$ 33
- Champagne (8).....\$ 31
- Oyster cocktail (8).....\$ 32
- Sherbet (8);#3400 cup/saucer (8).\$ 35
- #647 2-lite keyhole candlesticks.\$ 60
- #6004 8" ftd. flower holder.....\$ 55
- #3400/90 6" 2-part relish.....\$ 35

APPLE BLOSSOM ETCH - YELLOW

- 8½" #3400 plates (10).....\$ 16

See you in Tulsa, July 11-12 at the  
National Depression Glass Association  
Convention & Show. Y'all come!



EIGHTEENTH ANNUAL CONVENTION  
SHOW AND SALE

TULSA, OKLAHOMA  
TULSA CONVENTION CENTER  
(7th St. & Houston Ave. in Downtown Tulsa)

**JULY 11 & 12, 1992**

Sat. 10 a.m. to 5 p.m. Sun. 11 a.m. to 5 p.m.  
Admission: \$2.50 (good both days)

Top quality dealers from across the United States present an  
outstanding display of Depression Era Glassware including  
Cambridge, Imperial, Heisey, Fenton & Fostoria; china; pottery  
and related items of the era.

DISPLAYS! SLIDE PROGRAMS! SEMINARS! SPECIAL GUESTS! DOOR PRIZES!  
Information:  
Art & Shirley Moore  
N.D.G.A.

P. O. Box 69843  
Odessa, Texas 79769  
PUBLIC WELCOME!  
(918) 747-4164

• IMPERIAL • OLD PRESSED GLASS •

TIFFIN • DUNCAN MILLER • FENTON • HEISEY  
The National Duncan  
Glass Society  
Presents  
17th Annual Duncan & Miller Convention  
Show, Sale and Auction  
July 18 & 19 11:00 A.M. to 5:00 P.M.  
Alpine Club  
735 Jefferson Ave., Washington, PA  
1-70 Exit 6 ½ Mile  
Auction Saturday, July 18, 6:30 P.M.  
Washington Co. Fairground, 4-H Building  
Guest Speakers, Authors and Book Sales  
Door Prizes  
ADMISSION: \$2.50  
For Information Call: (304) 737-2006  
NEW MARTINSVILLE • PADEN CITY • MORGANTOWN  
CAMBRIDGE • FOSTORIA • FRY •



# DEALERS



# DIRECTORY

NOTE: When writing to the Dealers listed here, please enclose a SASE!

<p><b>YOU CAN ADVERTISE YOUR ANTIQUE SHOP HERE!</b></p>	<p><b>BENICIA ANTIQUE SHOP</b> 305 First Street Benicia, California 94510</p> <p><b>OPEN 11 AM - 5 PM</b> Closed Monday</p> <p>Z. E. LOPES 707-745-0978</p> <p><b>VISIT HISTORIC BENICIA</b> and its 28 shops Off Interstate 80 North of San Francisco</p>	<p><b>THE MUTED SWAN ANTIQUES</b> 5486 Peachtree Rd. Chamblee, GA 30341 Heart of Camblee Antique Row Specializing in Cambridge, Heisey and Fostoria</p> <p>Bill &amp; Pat Miller 404-451-7620</p>
<p><b>MILBRA'S MATCHING SERVICE</b> P.O. Box 363, Rio Vista, TX 76093 Milbra Long 817-645-6066 FOSTORIA * CAMBRIDGE * HEISEY DEPRESSION ERA GLASSWARE BUY AND SELL</p>	<p><b>ANTIQUE'S ON THE MALL</b> SPECIALIZING IN CAMBRIDGE GLASS Stagecoach Mall - Bldg 3 - Norwich, OH Virginia Bennett 614-432-4483 64183 Warne Drive, Cambridge, OH 43725</p>	<p><b>ARMORY ANTIQUES</b> 168 West Main Street Plain City, OH 43064</p> <p><b>QUALITY THINGS</b> Heisey, China, Silver, Furniture Mon-Sat 10-5 VISA/MC 614-873-4890</p>
<p><b>THE GLASS URN</b> 456 West Main Street, Suite G Mesa, AZ 85201 602-833-2702</p> <p>Mail Order Shows Open Shop</p> <p>CAMBRIDGE, FOSTORIA, HEISEY, ETC.</p>	<p><b>D &amp; D ANTIQUES</b> Columbus, Ohio</p> <p>Dick Slifko SHOWS ONLY</p>	<p><b>GATEWAY ANTIQUE MALL</b> 21122-134th Avenue North, Rogers, MN 55374 I-94 &amp; 101 (Exit #207, Turn North) Open 10-6, 7 Days 612-428-8286 Elaine Storck, Proprietor* Diane Overson, Mgr.</p>
<p><b>ETTELMAN'S DISCONTINUED CHINA &amp; CRYSTAL</b> Cambridge a Speciality</p> <p>P.O.Box 6491-CB Corpus Christi TX 78466 Phone 512-888-8391 Include S.A.S.E.</p>	<p><b>JUDY'S ANTIQUES</b> Judy Bennett 422 S. Ninth Street (Corner of Jefferson) Cambridge, Ohio 43725 BUYING Ph.614-432-5855 SELLING CAMBRIDGE GLASS MY SPECIALTY</p>	<p><b>DEER TRAIL ANTIQUES</b> RONI SIONAKIDES 517-669-5981 6565 W. Herbison Rd. DeWitt, MI 48820 Fostoria, Tiffin, Duncan, Cambridge</p>
<p><b>THE GLASS CUPBOARD</b> 39 Shire Oaks Drive Pittsford, New York 14534</p> <p>Marcia Ellis Cambridge, Duncan Miller 716-586-7596 Shows, Mail Order, Appt.</p>	<p><b>GREEN ACRES FARM</b> 2678 Hazelton Etna Rd., Pataskala, OH 43062 (State Route 310 North)</p> <p>Sat &amp; Sun 1-7 PM 614-927-1882 Antiques, Crystal Glass and Collectibles</p>	<p><b>"HAPPINESS IS"</b> Buddy and Kathy Stultz 3106 Warren Court, Glen Allen, VA 23060 804-672-8102</p> <p>Write or Call Us ----- We Do Ship</p>
<p><b>ELEGANT GLASSWARE</b> Barbara Brock 26 Fayette St. Martinsville, VA 24112 804-724-6762</p> <p>Cambridge - Heisey - Duncan - Fostoria</p>	<p><b>HERITAGE ANTIQUES</b> 5485 Manchester Rd. (Rt. 93) Akron, Ohio 44319</p> <p>Rosemary DePue Open Tues-Sat 12-5 (216) 882-2348</p>	<p><b>CRYSTAL LADY</b> 1817 Vinton St., Omaha, NE 68108 Joann D. Hagerty Bus. 402-341-0643 Res. 402-391-6730 Specializing in Elegant Glass &amp; Collectibles</p>
<p><b>YOU CAN ADVERTISE YOUR ANTIQUE SHOP HERE!</b></p>	<p><b>REMEMBRANCES</b> 7597 Daphne Dr., No. Syracuse NY 13212 Shirley S. Ladouceur 315-458-5297</p> <p>ANTIQUES and COLLECTIBLES MAIL ORDER SHOWS APPOINTMENTS</p>	<p><b>CROW'S NEST ANTIQUES</b> Constance Crow Buying &amp; Selling Elegant Depression Era Glassware</p> <p>Austin Antique Mall 8822 McCann Austin, TX 78758 512-371-0244</p>
<p><b>GLASS RESTORATION</b> BRILLIANT CRYSTAL ELEGANT DEPRESSION DON &amp; LYNNE WORMLAND MT. CLEMENS, MICH 313-468-3519</p>	<p><b>WATKINS</b> (Fine Quality) <b>CAMBRIDGE GLASS SHOP</b> 1429 Marquand Ave. (Corner of Woodlawn) Cambridge, OH 614-432-4460 Lana Watkins</p>	<p><b>MARGARET LANE ANTIQUES</b> 2 E. Main St., New Concord, OH 43762 Lynn Welker 614-826-4418</p> <p>Cambridge Glass Matching Service Hours Mon-Fri 1-5 PM or by Appointment</p>
<p><b>GLASS RESTORATION</b> BRILLIANT CRYSTAL ELEGANT DEPRESSION DON &amp; LYNNE WORMLAND MT. CLEMENS, MICH 313-468-3519</p>	<p><b>HELEN &amp; JIM KENNON</b> Heisey, Cambridge, Fostoria, Duncan, Imperial, Fenton, Tiffin P.O. Box 114, Brookville, OH 45309 PH: 513-833-5406 SHOWS ONLY</p>	

..... NEWSLETTERS ..... AUCTIONS ..... SEMINARS ..... SHOWS .....

**Have More Fun Collecting Glass - Join A National Glass Club**  
**Become More Knowledgeable About Your Collectable Glass**

The national glass collecting clubs listed below have each been organized to serve you, the collector. Each club is dedicated to the education of the collector, and the preservation of their particular type or manufacture of glassware. Each would appreciate the opportunity to help you achieve more satisfaction from your collection.

If you are interested in membership in any of these organizations, check the list below. The appropriate club(s) will acknowledge your application with either a membership card (if remittance is enclosed) or additional information as required. MAIL TO:

**NATIONAL GLASS CLUBS**  
**P.O. BOX 826, MOUNDSVILLE, WV 26041**

My Name Is \_\_\_\_\_  
 Address: \_\_\_\_\_  
 City: \_\_\_\_\_ State: \_\_\_\_\_ Zip +4 \_\_\_\_\_

I am interested in the following club(s):

<input type="checkbox"/> Fenton Art Glass Collectors of America, Inc. ....	\$15.00
<input type="checkbox"/> Fostoria Glass Society of America, Inc. ....	\$12.50
<input type="checkbox"/> Heisey Collectors of America, Inc (family add \$2.50) .....	\$18.50
<input type="checkbox"/> National Cambridge Collectors, Inc. ....	\$15.00
<input type="checkbox"/> National Depression Glass Assoc. Inc. ....	\$12.00
<input type="checkbox"/> National Imperial Glass Collectors Society .....	\$12.00
<input type="checkbox"/> National Duncan Glass Society .....	\$12.50
<input type="checkbox"/> Tiffin Glass Collectors Club .....	\$10.00
<input type="checkbox"/> Old Morgantown Glass Collectors Guild .....	\$15.00

Please make check payable to the name of the organization you wish to join.

..... NEWSLETTERS ..... AUCTIONS ..... SEMINARS ..... SHOWS .....



17th Annual  
**NATIONAL CAMBRIDGE COLLECTORS**  
**ANTIQUE SHOW & SALE**  
 (& 19th Annual NCC Convention)  
**PRITCHARD LAUGHLIN CIVIC CENTER**  
 INTERSTATE 70 -- EXIT 17E -- 1/2 MILE EAST ON ROUTE 40  
**CAMBRIDGE, OHIO**  
**JUNE 26, 27, 28, 1992**

HOURS	
FRIDAY, JUNE 26th (PREVIEW ADMISSION \$5.00)	5:00-8:00
SATURDAY, JUNE 27th	11:00-5:30
SUNDAY, JUNE 28th (ADMISSION \$2.50)	11:00-4:00

OFFERING CAMBRIDGE AND OTHER FINE GLASSWARE  
 including Heisey, Imperial, Fenton, Duncan, Tiffin, etc.

National Cambridge Collectors, Inc.  
 P. O. Box 416, Cambridge, Ohio 43725

**FIRST CLASS MAIL**

**FIRST-CLASS MAIL**  
**U.S. POSTAGE PAID**  
 So. Vienna, Ohio 45369  
 Permit No. 15

**NCC Museum of Cambridge Glass**

The museum is located on U.S. Route 40, one-eighth mile east of I-77 near Cambridge. Hours: 10 a.m. to 4 p.m., Wednesday through Saturday; noon to 4 p.m., Sunday (March through October). Phone 614/432-4245.  
**Closed Mondays, Tuesdays, Easter and the Fourth of July.**

**Membership Renewal Notice**

This is your **last** issue of the *Crystal Ball*—if the date on your address label reads 6-92.  
*Please renew now!*