



# Cambridge Crystal Ball

Published monthly by the National Cambridge Collectors, Inc.  
to encourage and report the discovery of the elegant and boundless product  
of the Cambridge Glass Company of Cambridge, Ohio

Issue No. 228

April 1992

## Cambridge collectors' auction is great success

By CINDY ARENT  
Special to the Jeff

The annual National Cambridge Collectors' all Cambridge Glass auction scored another success this year.

More than 339 lots of glass were organized for sale by auction chairman, Lynn Welker, and his committee at the Shenandoah Inn, Old Washington. The annual auction marked the reopening of the club museum on Route 40 east for the season. Proceeds from the auction are used for museum improvements and glass acquisitions.

Bidding was spirited throughout the day as both local and out-of-state attendees bid on their favorite pieces of Cambridge glass. The glassware available was a good representation of the expansive line produced here in Cambridge by The Cambridge Glass Co. between 1902 and 1958.

A few of the rare and unusual items on the block were: royal blue 11 inch vase/sterling silver overlay \$300, peachbloss 13 inch vase/etch 717/gold trim \$250, windsor blue six inch seashell compot \$125, ivory 12 inch bowl/enamel basket of flowers \$175, Mardi Gras 5 1/2 inch ball vase \$380, primrose seven inch basket/black enamel trim \$175, pink nude champagne \$225, Glassworker's Portiere (glass chains for door



A large crowd was on hand Saturday morning for the annual National Cambridge Collectors auction of Cambridge Glass at the Shenandoah Inn in Old Washington. Looking over several pieces auctioned off are Lynn Welker, I, auction chairman, and Craig Connelly, auctioneer.

frame) \$375, topaz caprice 14 inch plate \$470, and a Carmen Nautilus lamp/gold silkscreen decoration \$320. Prices for the more common items could be found for as low as \$5 for a Sonata tall sherbet.

Prior to the auction, a preview was Friday evening in conjunction with the quarterly meeting. President Joy McFadden called the meeting to order and had committee chairmen give reports. Mary Beth Hackett, antique show chairman, announced that due to the move to a larger facility more dealers would be needed for the June antique show this year.

J.D. Hanes reported for 1992 convention chairman Marybelle Moorehead. He gave a rough outline of convention activities and times that they would be.

Following the meeting, auction chairman Lynn Welker presented an auction preview and highlighted various pieces of auction glass. He then gave a show and tell session and answered questions about the glassware that members had brought for identification. A raffle of a Cambridge glass sunset tumbler was conducted by the Cambridge Cordials study group. The tumbler was won

by Jeff Ross.

The National Cambridge Collectors Inc. hopes to generate more local interest this season as the annual June Convention moves to the new Pritchard Laughlin Civic Center. The glass show and sale is open to the public and will run June 26-28. The club will also host a flea market at the Cambridge City Park large pavilion June 27 from 7 a.m. to noon and is also open to the public.

For more information about The National Cambridge Collectors or the antique show and sale, write to N.C.C., P.O. Box 416, Cambridge, Ohio 43725, or call 432-4245.

THE DAILY JEFFERSONIAN, Cambridge, Ohio

Monday, March 2, 1992

See inside, pages 10 & 11, for related story and Auction results.

# Cambridge Crystal Ball

Official Publication of National Cambridge Collectors, Inc. a non-profit corporation with tax exempt status. Published once a month for the benefit of its members.

Membership is available for individual members at \$15 per year and additional members (12 years of age and residing in household) at \$3 each. All members have voting rights, but only one *Crystal Ball* will be mailed per household.

Back issues of the *Crystal Ball* are available (beginning with Issue No. 1, May 1973) for members only. Cost: \$1.00 each or 12 issues for \$10.00.

## 1991-92 Officers & Committee Chairpersons

President	Joy R. McFadden
Vice-President	Marybelle Moorehead
Secretary	David B. Rankin
Treasurer	David B. Rankin
Sergeant-at-Arms	Judy Momirov
Acquisitions	Joe Andrejcek
Budget & Finance	David B. Rankin
By-Laws	Marybelle Moorehead
Convention Facilities	J.D. Hanes, Judy Momirov
Membership	Phyllis D. Smith
Museum---Facilities	Doyle Hanes
Museum---Interior	J.D. Hanes
Non-Glass Items	J.D. Hanes
Nominating	Mark A. Nye
Program	Cynthia A. Arent
Project	R. Clarke West
Publications	Mark A. Nye
Public Relations	Phyllis D. Smith
Publicity	Cynthia A. Arent
Study Group Advisor	Judy Momirov
1992 Auction	Lynn M. Welker
1992 Antique Show	Mary Beth Hackett
1992 Convention	Marybelle Moorehead
1992 Flea Market	Marlene & Harold Snyder
Crystal Ball Editor	Phyllis D. Smith

## Classified Advertising Rates

10 cents per word \$2.00 Minimum  
We cannot mix type size in classified advertisements. Abbreviations and initials will count as words. Payment in full must accompany all ads.

## Display Advertising Rates

(Camera-ready ads preferred)	Members	Non-Members
1/8 page	\$6.00	\$10.00
1/4 page	10.00	15.00
1/2 page	18.00	25.00
3/4 page	25.00	35.00
Full page	33.00	45.00

## Dealers Directory

Five-line maximum \$18.00 for 12 months

Cambridge *Crystal Ball* assumes no responsibility for items advertised and will not be responsible for errors in price, description or other information.

Advertising copy, articles, club news and notices must be in our hand by the 10th of each month to assure publication in our next issue.

Paid advertisements containing reproductions or new glass will not knowingly be accepted for publication.

Opinions or information stated in any signed article or letter printed in the *Crystal Ball* are those of the authors and may or may not agree with National Cambridge Collectors, Inc. The Editor reserves the right to refuse and to edit any material submitted for publication to conform with the editorial style of the *Crystal Ball*.

## Please Address All Correspondence to:

National Cambridge Collectors, Inc.  
P.O. Box 416, Cambridge, Ohio 43725  
President -- Joy R. McFadden 614/885-2726  
Secretary -- David B. Rankin 513/833-4626  
Editor -- Phyllis Smith 513/323-3888  
N.C.C. Museum -- 614/432-4245

Please notify us immediately of any change in your address.

Please enclose an SASE when requesting information.

# CAMBRIDGE GLASS BOOKS FOR SALE

By National Cambridge Collectors, Inc.

- **Colors in Cambridge Glass \***  
128 pages, 60 color plates, fully indexed  
Hardbound with price guide. . . . . \$19.95
  - **1930-34 Cambridge Glass Company Catalog Reprint \***  
250-page reprint of original catalog  
Paperback with price guide. . . . . \$14.95
  - **1949-53 Cambridge Glass Company Catalog Reprint \***  
300-page reprint of original catalog  
Paperback with price guide. . . . . \$14.95
  - **1956-58 Cambridge Glass Company Catalog Reprint \***  
164-page reprint of original catalog  
Paperback. . . . . \$6.95
- \* For NCC members only, the above publications are available at a 10 percent discount.

By Bill and Phyllis Smith

- **Cambridge Glass 1927-1929**  
66-page reprint of original catalog  
Paperback w/identification guide. . . . . \$7.95

By Cambridge Buffs Study Group

- **Nearcut**  
108-page reprint of 1910 Cambridge catalog  
Paperback with price guide. . . . . \$9.95
- **Price Guide**  
Updated price guide for Nearcut Catalog  
reprint (including postage). . . . . \$3.00

By Mark A. Nye

- **Cambridge Rose Point**  
94 pages, fully indexed  
Paperback with value guide. . . . . \$12.95
- **Value Guide**  
Updated value guide for Rose Point book. . . . . \$5.00

By Mary, Lyle and Lynn Welker

- **Cambridge Glass Company**  
120 pages of reprints from eight old catalogs  
Paperback. . . . . \$10.00
- **Cambridge, Ohio Glass in Color II**  
Spiralbound. . . . . \$5.95

By Harold and Judy Bennett

- **1903 Cambridge Glass Company Catalog Reprint**  
106-page reprint of an original catalog  
Paperback. . . . . \$7.50

## Address your orders to:

Books  
National Cambridge Collectors, Inc.  
P.O. Box 416  
Cambridge, OH 43725  
Please add postage and handling to your order (first book, \$2.00; each additional book, 50 cents), Ohio residents add 6 percent state sales tax.

Dealer discounts available - please write!

# President's Message

It is early March as I write this article which will appear in the CRYSTAL BALL on April 1, 1992. Two days ago it was 75° and now the temperature is in single digits, with below zero wind chill factor and, of course, I have a cold!

The Auction was fun. We saw some fun new faces for the first time and really missed some of our regular bidders. (I know there is other Auction information in this issue.) I did not even make a bid this year, but never fear, because I didn't get out of the vicinity without making purchases for my collection.

Our next big event is the annual Convention and you had better be making your plans. I stopped by the Pritchard-Laughlin Civic Center, with the Show chairmen, during our weekend in town. J. D. Hanes had assisted in arranging a "look-see," so some details could be checked.

Our dinner companions, J. D. and Doyle Hanes, Tarzan Deel and Jeff Ross, accompanied us for this "look-see." I cannot convey to you how enthusiastic we became as we began to envision our Convention activities and Antique Show, in this beautiful facility.

If you tired of the previous site, don't sit out the Show and Convention this year. The rooms are airy and well lit, ease of loading and unloading will not be believed by the dealers, and everything is clean and new!

Show chairperson Mary Beth Hackett wants you to know there is space in the Show for a few dealers, but she must hear immediately of your interest. Send your inquiries to the Club address.

The Museum is open for the season. Before this goes to press, the Museum should have been resided. The Acquisitions Committee added a couple new items, purchased at the Auction, and some of the displays have been reorganized. This is a big job and I truly appreciate the hard work of Committee workers who do the day to day work at the Museum and storage building, both inside and outside.

The Flea Market site for Convention is also new. Harold and Marlene Snyder will send out contracts about the time you receive this issue. If you would like to receive a Contract or wish additional information, please write to

the Snyders at the club address.

Is there something special you would like to see happen during Convention? If so, write to us and we will consider it.

Phyllis Smith will be directing the planning for the Former Worker's Reunion, with able assistance from the two Cambridge Study Clubs. She wanted to do this since this was Bill's special project, which he really enjoyed!

Make Convention plans without delay! You won't be sorry.

JOY

**EDITOR'S NOTE:** For the benefit of our new members, we are once again reprinting the list of Motels in the Cambridge area. If you have not made your reservations, please don't procrastinate any longer. Rooms are going fast. See pages 12 and 13 of this issue for further Convention information.

Don't put off till tomorrow what you need to do today!



17th Annual  
**NATIONAL  
CAMBRIDGE  
COLLECTORS**

**ANTIQUÉ SHOW & SALE**  
(& 19th Annual NCC Convention)

**PRITCHARD LAUGHLIN CIVIC CENTER**  
INTERSTATE 70 -- EXIT 17 -- 1/2 MILE EAST ON ROUTE 40  
**CAMBRIDGE, OHIO**

**JUNE 26, 27, 28, 1992**

HOURS	
FRIDAY, JUNE 26th (PREVIEW ADMISSION \$5.00)	5:00-8:00
SATURDAY, JUNE 27th	11:00-5:30
SUNDAY, JUNE 28th (ADMISSION \$2.50)	11:00-4:00

**OFFERING CAMBRIDGE AND OTHER FINE GLASSWARE**  
Including Heisey, Imperial, Fenton, Duncan, Tiffin, etc.

# Novelty Items

## PART II

by MARK A. NYE

The following paragraph comes from the "China, Glass & Lamps" description of the 1915 Pittsburg Show Cambridge display.

"The popular Community Colonial line is there in all its pristine glory with many additions in the shape of novelties and staple items, also the ever popular Nearcut ware."

What items from the #2800 or Community line did the author of this write-up consider novelties? One can only guess, based on what generally was considered staple items at the time and what was called novelties in catalogs, advertisements and other trade articles. Certainly, butter dishes, spoon holders, creams and sugars, basic oil bottles, nappies and most jugs would not be considered novelties as these were staple items in most, if not all, lines. The #13 7 oz. catsup bottle would probably be considered a novelty, or at least this author would consider it so since it was not a staple item. Would any of the seven oil bottles seen on the same catalog page as the catsup bottle (see page 5) be considered a novelty? Probably not.

The Community #68 ice jug and cover (shown on page 6) with its molded glass handle is most certainly a novelty since most, ice buckets or pails, have a metal bail for a handle. Footed cream pitchers and sugar bowls are debatable, but, at the time, might have been considered a novelty, as most sugars and creams would have been flat. The other pieces on the same catalog page are standard items for the period.

From its illustration, the #59 5" Almond Shell,



59. 5 in. Almond Shell, Handled

handled, appears to be unique in shape and certainly in its size and intended use. Thus, it could be termed a novelty.

While celery trays are not unique and cer-

tainly not novelties, the #40 9" Canoe pickle could be considered a novelty, as is the case for the #38 individual oval olive. On this same catalog page, the #131 ice tub is a standard item, while the #127 Tobacco Jar and cover is not and I would certainly call it a novelty. (see page 7) Not only is it a tobacco jar, but there also appears to be holes in the handles; holes most likely intended to hold pipes. It also has a cupped base, perhaps intended for use as an ash receiver.

Continuing with this same catalog page, with the exception of the footed sandwich tray and the #17 shaker, the remaining illustrated items could all be considered novelties.

The high and low footed bowls and covers, #103, #104, and #105, (see page 8) are unusual enough to be considered novelties and probably would not have been considered a staple item during the first decades of the 20th century. Footed bowls without covers were more common and would not have been considered a novelty. The three sizes of the #116 footed Rose bowl and the #117 Lilly bowl, in my view, would have been rather unusual items, since most flower bowls are not footed, and hence, qualify as novelties. The little #144 Mustard and cover is unusual because of its handle and was probably considered a novelty.



74. Ice Tea Tumbler Plate

Other items from the Community line that might have been considered novelties are:

the #74 ice tea tumbler plate;

the #79 footed puff box and cover; and the #93 ice cream cone holder.



79. Puff Box and Cover



93. Ice Cream Cone Holder.

continued on page 9





1. Butter Dish and Cover.



1. Spoon Holder.



1. Cream Pitcher.



1. Sugar Bowl and Cover.



6. 7 oz. Squat Oil Bottle.



7. 8 oz. Squat Oil Bottle.



8. 8 oz. Tall Oil Bottle.



9. 5 oz. Tall Oil Bottle.



10. 6 oz. Tall Oil Bottle.



11. 4 oz. Tall Oil Bottle.



12. 8 oz. Tall Oil Bottle.



13. 7 oz. Catsup Bottle.



14. 7 oz. Tall Syrup Jug.  
Ewer Cast Nickel Top.



15. 8 oz. Squat Syrup Jug.  
O. K. Cast Nickel Top.



16. 13 oz. Tall Syrup Jug  
Ewer Cast Nickel Top.



75. 7 oz. Cologne Bottle



66. 1/4 Gal. Low Jug.



65. 3 Pint Pitcher.



67. 1/4 Gal. Tall Tankard.



64. Squat Jug.  
Made in five sizes.



70. Tall Water Bottle.



69. Squat Water Bottle.



68. Ice Jug and Cover.



5. 5 oz. Low Footed Sugar Bowl.



5. 5 oz. Low Footed Cream Pitcher.



4. 5 oz. Tall Footed Cream Pitcher.



2. 6 oz. Hotel Cream Pitcher.



2. 9 oz. Hotel Sugar Bowl.



4. 4 oz. Tall Footed Sugar Bowl.



63. 2 oz. Ind. Hotel Cream Pitcher.



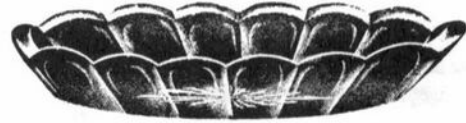
3. 5 oz. Berry Sugar Bowl.



3. 5 oz. Berry Cream Pitcher.



39. 12 in. Celery Tray.



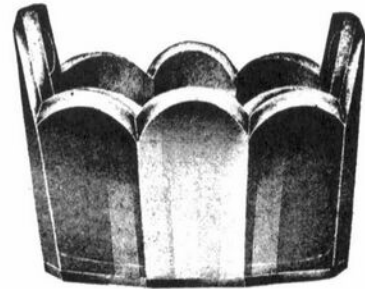
39. 9 in. Celery Tray.



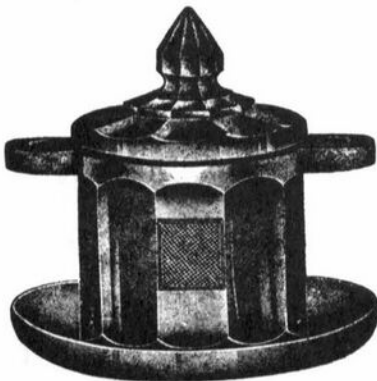
40. 9 in. Canoe Pickle.



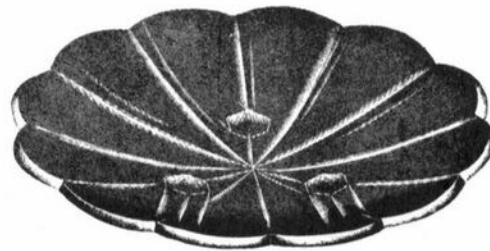
118. Violet Holder.



131. Ice Tub.



127. Tobacco Jar and Cover.



92. 10 in. Footed Sandwich Tray.



22. Toothpick Tray.



2800-18. Ind. Salt.



37. 3 1/4 in. Ind. Butter Plate.



38. 3 1/4 in. Ind. Oval Olive.



21. Footed Ind. Salt.



19. Hexagon Ind. Salt.



17. Shaker.



20. Tub Ind. Salt.



103. High Foot Bowl and Cover.  
Two Sizes.



104. High Foot Bowl and Cover on Plate.



98. 6 1/2 inch Bowl.  
99. 7 1/4 inch Bowl.  
100. 8 1/2 inch Bowl.  
A Round.



98. 7 inch Bowl.  
99. 8 inch Bowl.  
100. 9 inch Bowl.  
D Shallow.



116. Footed Rose Bowl.  
Three Sizes.



117. Lilly Bowl.  
Three Sizes.



105. Low Foot Bowl and Cover on Plate.



144. Mustard and Cover.

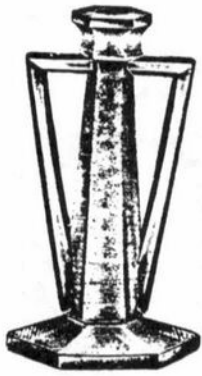


101. 6 inch Low Foot Bowl, C Belled.  
also make  
101. 6 inch, A Round.  
101. 6 1/4 inch, D Shallow.

Copyright © 1911 by the American Crystal Company, New York, N. Y.



NOVELTIES . . . . . continued from page 4



110. 7 in. Candlestick

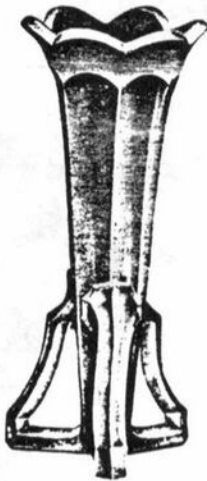
Additional items that might have been considered novelties, from the Community line, are:

the #110 two-handled candlestick;



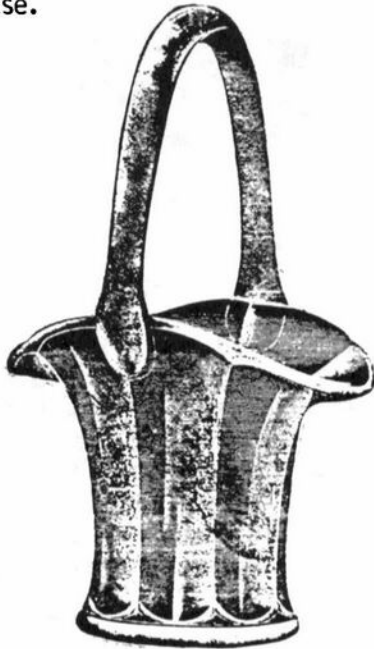
112. 8 inch Vase.

the #112 two-handled vase;



114. 9 1/2 inch Vase.

and the rather unusual #114 vase.



122-123-124-125-126-135 Basket

Several of the Community items deemed to be novelties were also made in ebony, as well as crystal. These include: the #59 almond shell; the baskets; the tobacco jar and cover; the ice jug and cover; the two-handled candlestick and vase; the #114 vase; the canoe

pickle; and three other items not previously mentioned. These being the #165 and #166 footed Violet holders and the #167 Nasturtium vase.



2800/164. 5 1/2 in. Footed Violet Holder.



2800/165. 5 1/2 in. Footed Violet Holder.



2800/167. 6 in. Nasturtium Vase.

As seen in this article and the previous one, while there is no doubt about some items being novelties, it was, and is, often the eye of the beholder that determines if an item should be considered a novelty or not.

to be continued.....

ANSWER TO LAST MONTH'S QUESTION

QUESTION: "What is a #11 leg?"

ANSWER: The #1238 Vase - shown on pg. 26 of the 1949-53 Catalog Reprint. According to an old Cambridge factory turncard, dated 12-17-51, the stem on this vase was also known as the #11 leg fancy stem, aka keyhole stem. On that date, a total of 323 vases were made, of which 88 were bad and 235 were good - all in crystal.

In Memoriam

FREDERICK C. KRAUSS  
Asheville, North Carolina

Word has been received that longtime N.C.C. member, Frederick C. Krauss, passed away on February 12, 1992. Fred joined N.C.C. in March 1978.

He is survived by his wife, Dorothy, and other family members and friends.

We extend our sympathy to you Dorothy and hope it will be of comfort for you to know that others care.

# Auction shows glassware hasn't lost luster

By David Jacobs  
Dispatch Staff Reporter

OLD WASHINGTON, Ohio — The past was as clear as glass for Mary Martha Mitchell yesterday.

Her life's work was before her eyes at the All Cambridge Glass Auction in the Shenandoah Inn near here, in Guernsey County.

"I am very proud of these glass products," Mitchell said of 500 Cambridge Glass Co. items up for bid. "When you pick them up and hold them, you see the quality in them."

Mitchell, 84, is the last living president of the company, which closed in 1958. It was once the world's largest glass producer, she said, making an estimated 100,000 pieces a year and employing 850.

"We had very, very good workers," she said. "They took a lot of time to make the glass."

Mitchell, who worked there from 1927 to 1958, recognized much of the glassware auctioned yesterday. She was not interested in bidding.

"I'm just here to watch because this glass means so much to me," she said. "The products are getting harder and harder to find. They are either in museums or people are keeping them."

The auction was organized by the non-profit National Cambridge Collectors Inc. The glass enthusiasts have held the auction since the 1970s to help maintain a Cambridge Glass museum east of Cambridge, Ohio.

More than 100 people signed up to bid. Products included glass pitch-

ers, lamps, bowls, plates and novelty items. They were made between 1901 and 1954.

Dave Rankin, 49, of Brookville, Ohio, bought an ice cream sundae dish for \$50. He thinks it was made about 1915. "This dish has a special finish that is highly desirable," he said. "They are not easy to come by."

Lynn Welker, auction organizer, said Cambridge Glass is known for its decorations. "These include silver inlays, gold enamels and paints. They also had 50 colors."

Welker has amassed a collection of 6,000 to 7,000 Cambridge Glass products. The company generally did not use logos, but Welker has no trouble spotting Cambridge Glass.

"It's like anything else," he said. "You learn it."



Mary Martha Mitchell

Cleveland Plain Dealer - February 18, 1992

## TODAY'S PROFILE

### Emeritus school board member made history

Donald E. Armbrecht has seen a lot of Avon Lake history — and has made some as well.

After 32 years on the Avon Lake school board, Armbrecht is now school board member emeritus, a post he finds "most unusual and sincerely appreciated."

While a board member, Armbrecht helped organize curriculum-developing sessions between board members and teachers and was partly responsible for starting a program that brought state legislators from Lorain County together with area school superintendents and board members.

He also was a vocal critic of state education mandates handed down without the money to pay for them.

"I like to think that speaking out in a reasonable way when encountering conditions that do not seem proper should help make this a better world," he said. "I am proud of the help I have given in maintaining the reputation of the Avon Lake School District as one of the most outstanding of the districts in the state of Ohio."

Armbrecht's longevity on the board is nearly matched by his involvement with other community organizations, such as the Avon Lake United Church

### Donald E. Armbrecht



■ Age: 77

■ Born in Findlay, O., where he lived for 32 years.

■ Worked for 42 years as a quality-control engineer and manager for Union Carbide.

■ Was given the first key to the city 25 years ago

of Christ, where he has been a church council member for 25 years, and the Avon Lake Kiwanis, of which he has been a member for 29 years. He has been president and lieutenant governor of that group.

He also has been president and vice president of the local chapter of the American Association of Retired Persons and served on the Avon Lake Board of Zoning Appeals.

He credits his wife of 55 years as his inspiration for his work and community service: "I am most proud of my wife, Odulla, and our three sons and their families."

We add our congratulations to longtime N.C.C. member and former Board member, Donald E. Armbrecht.

## AUCTION GLASS BROUGHT HIGH PRICES



Item #258, the extremely unusual, in Topaz, 14" Caprice plate, sold for \$470. The lovely 7" Primrose basket w/black enamel trim went for \$175, as did the equally lovely Ivory 12" bowl w/enamel basket of flowers. The hard to find Avocado footed cream & sugar set made a bidder very happy for \$90; while the 10" stick vase in Primrose auctioned off for \$25.

### 1992 AUCTION LIST CORRECTIONS (indicated on the Auction Results with an \*)

- 209 - Sold by Cambridge although not made or decorated by Cambridge.
- 217 - Possibly made by Imperial in a Cambridge mold
- 228 - Chip on divider
- 242 - Caprice #340, not #339
- 332 - 5 items, not 6

## 1992 Auction Results

1	135.00	58	30.00	115	40.00	172	22.00	229	5.00	286	10.00
2	35.00	59	20.00	116	35.00	173	45.00	230	22.50	287	17.50
3	50.00	60	12.50	117	40.00	174	24.00	231	25.00	288	17.50
4	95.00	61	250.00	118	60.00	175	20.00	232	12.50	289	20.00
5	25.00	62	85.00	119	280.00	176	35.00	233	25.00	290	5.00
6	35.00	63	30.00	120	60.00	177	60.00	234	20.00	291	17.50
7	40.00	64	60.00	121	140.00	178	15.00	235	7.50	292	55.00
8	12.50	65	22.50	122	40.00	179	25.00	236	35.00	293	37.50
9	20.00	66	22.50	123	40.00	180	100.00	237	17.50	294	290.00
10	17.50	67	55.00	124	15.00	181	40.00	238	24.00	295	50.00
11	35.00	68	20.00	125	60.00	182	80.00	239	60.00	296	75.00
12	45.00	69	90.00	126	35.00	183	50.00	240	55.00	297	230.00
13	35.00	70	10.00	127	35.00	184	35.00	241	65.00	298	80.00
14	45.00	71	25.00	128	80.00	185	30.00	242	85.00*	299	30.00
15	20.00	72	7.50	129	135.00	186	25.00	243	22.50	300	45.00
16	15.00	73	12.50	130	110.00	187	25.00	244	5.00	301	50.00
17	27.50	74	160.00	131	45.00	188	200.00	245	50.00	302	35.00
18	20.00	75	110.00	132	380.00	189	85.00	246	95.00	303	27.50
19	20.00	76	25.00	133	25.00	190	40.00	247	90.00	304	40.00
20	22.50	77	30.00	134	45.00	191	27.50	248	20.00	305	10.00
21	12.50	78	110.00	135	70.00	192	160.00	249	90.00	306	35.00
22	40.00	79	17.50	136	120.00	193	40.00	250	40.00	307	40.00
23	50.00	80	50.00	137	105.00	194	250.00	251	180.00	308	12.50
24	12.50	81	50.00	138	20.00	195	225.00	252	66.00	309	17.50
25	60.00	82	15.00	139	10.00	196	185.00	253	55.00	310	20.00
26	35.00	83	20.00	140	175.00	197	50.00	254	65.00	311	7.50
27	20.00	84	40.00	141	55.00	198	50.00	255	80.00	312	5.00
28	30.00	85	30.00	142	45.00	199	20.00	256	120.00	313	17.50
29	15.00	86	15.00	143	15.00	200	65.00	257	70.00	314	25.00
30	15.00	87	65.00	144	105.00	201	7.50	258	470.00	315	10.00
31	15.00	88	40.00	145	20.00	202	45.00	259	35.00	316	25.00
32	17.50	89	12.50	146	24.00	203	55.00	260	30.00	317	25.00
33	15.00	90	15.00	147	20.00	204	12.50	261	8.00	318	35.00
34	15.00	91	10.00	148	10.00	205	45.00	262	10.00	319	75.00
35	20.00	92	40.00	149	15.00	206	30.00	263	40.00	320	40.00
36	7.50	93	210.00	150	15.00	207	40.00	264	50.00	321	25.00
37	45.00	94	35.00	151	40.00	208	375.00	265	35.00	322	16.00
38	35.00	95	25.00	152	20.00	209	205.00*	266	17.50	323	12.50
39	120.00	96	125.00	153	17.50	210	135.00	267	30.00	324	10.00
40	35.00	97	125.00	154	40.00	211	320.00	268	35.00	325	12.50
41	40.00	98	35.00	155	15.00	212	10.00	269	35.00	326	20.00
42	55.00	99	7.50	156	30.00	213	60.00	270	25.00	327	15.00
43	10.00	100	5.00	157	40.00	214	70.00	271	30.00	328	7.50
44	12.50	101	15.00	158	35.00	215	90.00	272	140.00	329	5.00
45	40.00	102	55.00	159	25.00	216	125.00	273	40.00	330	5.00
46	15.00	103	15.00	160	45.00	217	15.00*	274	12.50	331	20.00
47	25.00	104	105.00	161	35.00	218	40.00	275	35.00	332	20.00*
48	17.50	105	25.00	162	20.00	219	115.00	276	22.50	333	15.00
49	145.00	106	145.00	163	20.00	220	145.00	277	20.00	334	25.00
50	95.00	107	80.00	164	35.00	221	30.00	278	45.00	335	30.00
51	300.00	108	35.00	165	10.00	222	70.00	279	10.00	336	5.00
52	110.00	109	90.00	166	50.00	223	22.50	280	60.00	337	25.00
53	70.00	110	30.00	167	15.00	224	70.00	281	35.00	338	45.00
54	55.00	111	95.00	168	30.00	225	5.00	282	50.00	339	20.00
55	30.00	112	175.00	169	105.00	226	50.00	283	30.00		
56	17.50	113	15.00	170	160.00	227	30.00	284	15.00		
57	40.00	114	15.00	171	15.00	228	10.00*	285	5.00		

\* Auction Corrections - See previous page

# MOTEL INFORMATION

## CAMBRIDGE FAIRDALE INN

6405 Glenn Highway, Cambridge, Ohio 43725. 614-432-2304. Located at the intersection of Interstate 70, Exit 176 and U.S. Routes 22 and 40, two miles west of the Courthouse. Clean comfortable rooms at reasonable rates. Close to The Living Word Outdoor Drama. AAA and Mobile rated, senior citizen rates.

\$25.00 Single, \$30.00 Double. No extra for children. One week cancellation notice. Approximately 6 rooms available.

## DEER CREEK MOTEL AND RESTAURANT

2325 Southgate Parkway, Cambridge, Ohio 43725. 614-432-6391. Located at Exit 178 off of Interstate 70, State Route 209 south. Also Exit 44B on Interstate 77. Pool, color TV, air conditioning and waterbeds. For reservations, call 1-800-637-2917.

\$27.95 Single, \$33.95 Double. \$5.00 extra per person. 24 hour cancellation notice. Approximately 80 rooms available.

## EL RANCHO

6653 Glenn Highway, Cambridge, Ohio 43725. 614-432-2373. Located at Interstate 70, Exit 176, turn right. Five minutes from The Living Word Outdoor Drama. In-room coffee, color cable TV, direct dial telephone. Walking distance to restaurant. AAA, senior citizen and commercial rates.

\$32.50 Single, \$39.50 Double. Over age 12 \$3.00 extra. One week cancellation notice. Additional discount for Thursday-Saturday stay. Approximately 30 rooms available.

## BEST WESTERN CAMBRIDGE

1945 Southgate Parkway, Cambridge, Ohio 43725. 614-439-3581. Located at Exit 178 off Interstate 70. Two story wood constructed building with exterior corridors and entrances. 95 guest rooms, cocktail lounge, 24-hour restaurant, outdoor pool, playground, complimentary morning coffee, free HBO, ESPN and ample parking.

\$49.00 Single or Double. No extra for children. One week cancellation notice. Approximately 50 rooms available.

## HOLIDAY INN-CAMBRIDGE

P.O.Box 1270, Cambridge, Ohio 43725. 614-432-7313. Located at Interstate 70, Exit 178, travel north on State Route 209, 1/16th of a mile to the west side of State Route 209. The Landing Restaurant, The Dockside Lounge, meeting and banquet facilities with seating from 140-240 persons. 107 newly remodeled sleeping rooms. Free Showtime, ESPN, CNN and WTBS.

\$49.00 Single, \$53.00 Double. No extra for children. One week cancellation notice. Approximately 25 rooms available.

## CAMBRIDGE TRAVELODGE

P.O.Box 158, Southgate Parkway, Cambridge, Ohio 43725. 614-432-7375. Exit 178 off of Interstate 70, 48 newly renovated rooms, heated pool, whirlpool, sauna, HBO, ESPN, senior citizen rates, AAA three-diamond rating. Complimentary coffee and doughnuts, restaurants nearby.

10% off prevailing rate. One week cancellation notice. Approximately 15 rooms available.

## DAYS INN CAMBRIDGE

2328 Southgate Parkway, Cambridge, Ohio 43725. 614-432-5691. Located at Exit 178 off of Interstate 70. 103 guest rooms, complimentary continental breakfast. Pool, meeting rooms, king suites, HBO, ESPN, restaurant and lounge adjacent.

\$53.00 Single, Double, Triple or Quad occupancy. Children free. Cancellation policy depends on type of reservation. Approximately 45 rooms available.

Rates do not include 12% sales and bed tax. Remember to mention National Cambridge Collectors for the special rate.

**GUERNSEY COUNTY VISITORS & CONVENTION BUREAU  
2250 SOUTHGATE PARKWAY  
P.O. BOX 427  
CAMBRIDGE, OHIO 43725  
614-432-2022**



# ANNUAL CONVENTION

Notes from Convention Chairman Marybelle Moorehead

Let me take this time to bring you up-to-date on the plans for this year's Convention.

As you know, the theme for the Convention is "Cambridge Novelties." For the table decorations at the Banquet on Saturday evening, I am requesting that you please loan us any swans that you may have. We can use them in all sizes.

The food catering will be done by Riesbeck's of Cambridge. They have very good food and a wonderful reputation in the area. With the nice spaces to work with at the Civic Center for the food functions, these (our meals) should be some of the best that we have had in years. The Galleria for the Banquet should help us to make the Banquet an elegant event again.

On the subject of food functions, Mark Nye will be the Saturday Breakfast Speaker; and Dr. James Mease'll will be the Saturday Banquet Speaker. There will be more about these two men in the next issue of the CRYSTAL BALL.

Now, for some of the changes this year due to the location change. Your Registration Packets can be picked up at the Museum on Thursday and Friday. After the Show opens on Friday evening, we will have them at the Civic Center for pickup the rest of the weekend.

The Thursday night "Get Acquainted Party" will be held at the Museum. I am taking this back into what Mark Nye had originally intended when he started this a few years ago - a social type, non-structured event. This will be a time to get to meet your old friends and to make new ones, as well as a Museum Open House. The tentative times will be from 6 - 8 pm. The refreshments will be punch, chips and other light snacks.

Since we are having the Thursday night event at the Museum, I have decided to discontinue the "Coffee with Cambridge" on Friday morning. I am working on a couple of ideas for Friday and will let you know next month as to what will be on the agenda for them.

As always, we can use volunteers to help. Some things you could help with are:

The sales of the club items.

Preparing packets prior to Thursday, if you are in town early.

Mary Beth Hackett might need you to help with ticket sales for the Show.

Harold & Marlene Snyder might need your help with the Flea Market setup.

Any number of other things that invariably come up at the last moment.

Until next month, keep thinking CONVENTION 1992 !

---

---

# Club News

---

---

National Cambridge Collectors, Inc.  
Quarterly Membership Meeting  
February 28, 1992  
Shenandoah Inn, Old Washington, Ohio

The meeting was called to order at 8:15 PM by President Joy McFadden.

By motion duly made and seconded reading of the minutes of the last meeting were dispensed with. There were no corrections.

Treasurer's report by Dave Rankin: As of December 31, 1991, operating fund equity was \$28,379 and museum fund equity was \$151,366 for a total of \$179,745. As of today, the checking account balance is \$11,377.99 and the money market account is \$50,219.38 for a total of \$61,597.37.

President McFadden announced that Joe Andrejcek had been appointed to fill the incomplete term of Bill Smith on the Board of Directors.

## COMMITTEE REPORTS:

**MEMBERSHIP:** Chairman Phyllis Smith reported that we have 1042 individual members, 387 associates, 2 lifetime regular members and 5 honorary members for a total of 1436.

**CRYSTAL BALL:** Editor Phyllis Smith reported that the March Issue was mailed today. She encouraged more people to advertise in the Crystal Ball. Reports from advertisers indicate that results from these ads are good.

**PUBLIC RELATIONS:** Mark Nye reported that he will be a guest at the Arlington, Texas show March 20-21. J. D. Hanes will be presenting a talk at a local church and another talk to 150 5th grade students.

**BUDGET AND FINANCE:** Chairman Dave Rankin reported that the 1992 budget had been presented to and accepted by the Board of Directors at a meeting earlier today. The budget calls for profitable member operations and break-even museum operations.

**AUCTION:** Chairman Welker reported that the 1992 auction is ready to go on schedule tomorrow.

**ANTIQUe SHOW AND SALE:** Chairman Mary Beth Hackett reported that 24 contracts had been mailed and 17

have already been signed and returned. Two additional dealers have provided acceptance by phone. She also reported that booth spaces are still available at this year's new show site at the convention center.

**FLEA MARKET:** Chairman Marlene Snyder reported that this year's flea market will be held at the large pavilion at the Cambridge city park. Dealer setup will be 4:30-6 AM. Early bird admission will be \$5 from 6-7 AM with general admission from 7am - 12 noon. Contracts will be mailed at the end of March. Inquiries should be addressed to J. D. Hanes or Marlene Snyder in care of NCC.

**MUSEUM INTERIOR:** Chairman J. D. Hanes reported that a special display has been completed at the museum in line with this year's convention theme of Cambridge novelties. He also reported that the museum will be closed for a short duration while repairs to the museum exterior are made.

**NON-GLASS ITEMS:** Chairman J. D. Hanes had no report.

**MUSEUM EXTERIOR:** Chairman Doyle Hanes reported that repairs to the museum exterior should start in about one week.

**BYLAWS:** Chairman Marybelle Moorehead had no report.

**CONVENTION:** J. D. Hanes reported for chairman Moorehead that the speakers for the convention will be Mark Nye at the Saturday morning breakfast and Dr. James Measell at the banquet. Convention packets can be picked up at the NCC museum Thursday and Friday. The Thursday chairman's reception will be held at the museum. Reisbeck's has been selected to cater the functions at the convention center. A request was made for participants to bring swans for table decorations. Look for additional details in the April issue of the Crystal Ball.

**STUDY GROUP ADVISORY:** Chairman Judy Momirov offered assistance to anyone interested in forming local study groups.

**PROGRAM AND ENTERTAINMENT:** Chairman Cindy Arent had no report.

**PUBLICITY:** Chairman Arent reported that convention advertisements had been placed in the Treasure Chest, Ohio Collectors Guide, Daze, Antique Week, New York/Pennsylvania Collector and Glass Collectors Digest.

**PROJECTS:** There was no report from chairman Clarke West.

ACQUISITIONS: Chairman Joe Andrejčak had no report.

PUBLICATIONS: Chairman Mark Nye reported he had the Rose Point price guide ready for the printer. The Caprice book has been started and he requested assistance from anyone interested in helping with the book.

CONVENTION FACILITIES SPECIAL COMMITTEE: Cochairman J. D. Hanes reported that there was no additional information to report at this time.

OLD BUSINESS: President McFadden reported that the manufacturer is still having trouble producing the "Committed to Cambridge" awards. The complete list of those still due to receive an award is known and the awards will be given when they finally become available.

NEW BUSINESS: Mark Nye, Chairman of the nominating committee, reported that the terms of board members Clarke West, Marybelle Moorehead and Cindy Arent expire this year. The nominating committee consisting of Tarzan Deel, Charles Upton and Vicki Wollenhaupt offered the following nominations for these three positions: Cindy Arent, Tarzan Deel, Marybelle Moorehead and Georgia Otten. There being no nominations from the floor a motion was made by Frank Wollenhaupt, seconded by Norma Hufford, that nominations be closed. Motion carried.

The next meeting will be the annual meeting that will follow breakfast on Sunday, June 28, 1992, at the Pritchard-Laughlin convention center.

Upon motion duly made and seconded the meeting was adjourned at 8:52 PM.

Submitted by  
David B. Rankin, Secretary

---

---

## *Study Club News*

---

### STUDY GROUP #13 - SOUTH WEST OHIO "MIAMI VALLEY, OHIO"

The Miami Valley (Ohio) Study Group held their meeting February 11th at the Huber Heights Public Library. There were ten members present.

President Norma Hufford reported that Clarke West had resigned as Treasurer, and Mac

Otten was elected to replace him.

Work continues on the Etching book, but it looks to be a long, involved project.

"Show & Tell" produced the following pieces: ivory 13" Draped Lady on #1 style base; crystal Pristine #490 2½" round candlesticks; crystal Feather 9" ftd. Banquet bowl; carmen 9" #1237 vase w/crystal stem & foot; amber topped #3011 brandy; amber topped #3011 cocktail; forest green topped #3011 brandy; mocha Caprice cream & sugar; gold krystal #3130 goblet E. Apple Blossom; gold krystal #34/1093 2-part relish E. Apple Blossom; Regency cordial w/moonlight blue bowl and crystal stem & foot; crystal #3200 Cut Wild Rose punch cup; crystal #3400/38 12 oz. tumbler E. Diane and a crystal pressed Rosepoint wine.

Also displayed, a pistachio Caprice cup; bluebell #3085 5 oz. ftd. tumbler; helio #532 6½" comport; amber matching powder box and hair receiver w/celluloid lids; crystal #3400 cheese R.C. engraved #541; carmen #1066 cigarette holder/match holder with crystal stem and ashtray foot; amethyst #1330 5" sweet potato vase; crystal Feather piece - not identified - looks like a small spittoon; crystal ftd. tumbler etched Cupid; crystal #1066 oval cigarette holder w/ashtray foot engraved Lucia; crystal Strawberry wine signed Near Cut; mandarin gold #1066 stemmed blown candy and cover; amber pulled stem cocktail etched and enamel encrusted Fighting Cocks.  
submitted by Sue Rankin

---

STUDY GROUP #14 - CAMBRIDGE, OHIO  
"THE CAMBRIDGE CORDIALS"  
Contact person - Judy Momirov  
Phone: 614/432-2896

The Cambridge Cordials met on Saturday, February 15th at the home of Rich and Sally Bennett. There were nine members present.

Our hosts were unable to obtain a former worker for an interview, so Rich presented a program on colors. Almost all colors of Cambridge's production were on display from our hosts collection, as well as "Show & Tell" items.

Among the items were: #3400/156 12 oz. decanter in carmen w/gold encrusted Bordeaux etch; Everglade #20 10½" vase in violet;

continued on page 16

# Museum Moments

by J. D. HANES

It was nice to get to see many of you over Auction weekend. The Museum opened on Sunday, March 1st, for the season.

We received many donations over the weekend and during February. They are as follows.

Swede and Kay Larsson: #3400/4 12" bowl, amber, gold encrusted Wildflower.

Paul White: Blue I 5½" basket with the rope type handle; #300 3-ftd. 6" covered candy in amber, etched #704; #7 Mt. Vernon cup & saucer in royal blue; and a #3400/91 8" 3-part relish in amber.

Joe Andrejcek: #39 Martha Washington 10" covered urn in peach-blo with a gaudy black plaster decor.

Carol Sweeney: #3085 6 oz. sherbet in light emerald etched Hunt Scene.

Kelvin Moore: Everglade #34 12 oz. ftd. tumbler in crystal with a buffed satin finish; and an Everglade #40 6" ruffled comport in crystal.

The following items were donated in "Memory of Bill Smith.

Kelvin Moore: #87 vase in light emerald, etched Betty.

Mark Nye: #2696 2-hdld. covered cracker jar in crystal.

Everett and Shirley Patterson: #12 12½" bowl in ebony with an enamel floral decor and gold trim; and a #2899 5" flower block in ebony with an enamel dots trim.

Also, with some of the money that has been donated in Bill's memory, the Acquisitions Committee (during the Auction) purchased the #119 Primrose 7" basket with the black enamel trim.

We have also received other monetary donations in "Memory of Bill" from: Anonymous; Fenton Art Glass Collectors of

America; and Carrie Louise Stone. These total an additional \$125.

This will about do it for this month. Until next time, may you all keep well and keep searching for Cambridge.



May the Easter Bunny bring you a great big Cambridge basket or a Cambridge Rabbit.

STUDY CLUB NEWS. . continued from page 15

special article #101 5" bonbon and cover in helio w/gold trim and iridescent type finish; examples of some colors in cullet from the Cambridge Glass Company dump; and Jefferson stems in mandarin gold.

The next meeting will be held on March 21st at the home of Doyle and J. D. Hanes; and the April meeting will be held on April 11th at the home of Jeff Ross.

submitted by J. D. Hanes

## PERFUME & SCENT BOTTLE COLLECTORS PLANNING CONVENTION

The Perfume and Scent Bottle Collectors Association have announced plans for their Fourth Annual Convention to be held May 15-17, 1992, in Atlanta, Georgia at the Hyatt Atlanta Airport Hotel.

Headlining the event will be the Perfume Bottle Show and Sale. About 30 dealers are expected. For the first time, the Show will be open to the public on Saturday, May 16th from 10 am to noon; and on Sunday, May 17th from 9 am to 1 pm. Over 4,000 highly collectible and rare bottles will be offered for sale.

Additional information on this Convention and Show can be obtained from Marti DeGraaf and Toby Mack, Convention Co-Chairs, 1805A N. Mohawk St., Chicago, IL 60614. Phone: (312) 951-5954.



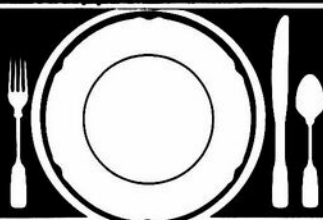
**— Classified —**

**WANT TO BUY:** Rosepoint #3106 stems. Write price and description. Nancy & Jim Finley, 816 South Barrett, Sedalia, MO 65301. Phone: (816) 826-5032 or 827-0101.

**FOR SALE:** All #3798 Cambridge Square - 10 sherbets @ \$7 each, 9 wines @ \$13 each, 6 ice teas @ \$9 each; or all 25 pieces for \$200. Ruth Donnell, 18340 State Route 23, Pemberville, OH 43450. Phone: (419) 287-3887.

**N.C.C. FLEA MARKET:** June 27, 1992. Setup 4:30-6 am (Dealers ONLY). Early bird admission will be \$5 from 6-7 am. General admission from 7 am - 12 noon. **NEW LOCATION!!** Cambridge City Park, Large Pavilion. For Contract or additional information, write to: Marlene & Harold Snyder, Flea Market Chairpersons, P.O. Box 416, Cambridge, OH 43725.

HAVE A VERY HAPPY EASTER!



**How to Find Those Missing Pieces.**

The world's largest source of discontinued and obsolete crystal -- as well as china and flatware -- Replacements, Ltd., buys and sells over 36,000 different patterns.

If you need a piece or several pieces to add to your collection ... or if you'd like to sell some unneeded extras ... call or write us. We can provide you with a complete printout of available pieces in your pattern. Or we'll let you know our prices for the pieces you wish to sell.

Replacements, Ltd.: a 100,000 square foot facility; 1.4 million pieces; over 600,000 satisfied customers. Contact us, or come see our showroom. Let us help you complete your collection ... or maybe you'll help add to ours.

**REPLACEMENTS, LTD.**

Call (919) 697-3000, FAX (919) 697-3100, or write:  
1089 Knox Road • P. O. Box 28029, Dept. C • Greensboro, NC 27420

OVER 6800 CAMBRIDGE PIECES

**L. A. MANESS**

RT. 1, BOX 552, ASHLAND, VA 23005  
(804)798-1825

C = MARKED      UPS \$4 EACH CTN

Apple Blossom 6" plate,  
(6) each.....\$ 10  
Apple Blossom 8½" plate  
(4) each.....\$ 12  
Chantilly duo candlesticks, pr...\$ 60  
Diane 9 oz. goblet #3122  
(5) each.....\$ 27  
#1506/4 blue 5" novelty  
basket C.....\$ 45

CASCADE CRYSTAL

Cream & sugar, set.....\$ 18  
Plate, 6½" (6) each.....\$ 7  
sherbet (10) each.....\$ 9  
5 oz. flat tumbler (5) each.....\$ 10  
12 oz. flat tumbler (8) each.....\$ 12

VISA/MASTERCARD WELCOME

W A N T E D

CAMBRIDGE #3450 NAUTILUS

14 oz. Decanters - Carmen or Emerald

Also odd trays and stoppers

MIKE & JULIE OPACK

1815 Berwick Circle  
Duluth, MN. 55811  
(218) 728-5410

Congratulations to the person who topped our mail bid for the carmen Nautilus 28 oz. Decanter at the February 29th Auction.

If you'll drop us a line, or call, we have a proposition you may find interesting.

# COLUMBUS ANTIQUE FLEA MARKET

11th  
Year

(ANTIQUES AND COLLECTIBLES)

11th  
Year

## APRIL 5th

Ohio State Fairgrounds - Lausche Building - Off I-71 Exit 17th Ave.

SUNDAY ONLY - 7 am-4 pm

Early buyers welcome 4 AM

### 1992 SCHEDULE 1992

SEPTEMBER 6th \* OCTOBER 11th \* NOVEMBER 8th \* DECEMBER 13th

150 Quality Dealers

SELLING: Advertising, Art Deco, books, Cambridge, clocks, coins, collectibles, depression glass, dolls, Fiesta, fine early furniture, Heisey, jewelry, lamps, oak furn., postcards, pottery, good primitives, tools, toys.

Show admission \$1.50 \* Children under 12 free

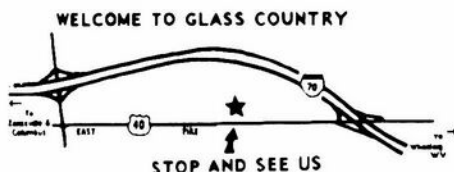
Heated/Air Conditioned \* Concession



*"The Friendly  
Family Business"*

4214 North High Street, Columbus, Ohio 43214  
(614) 267-8163 (614) 263-6830 (614) 885-2352

## Stage Coach Antique Mall



RT. 40 ONE-HALF MILE WEST OF I-70 EXIT #164  
MANY DEALERS - WIDE SELECTION - PLENTY PARKING

WE FEATURE GLASSWARE OF:  
CAMBRIDGE, HEISEY, FENTON & FOSTORIA  
Plus Art Pottery & a General Line of Antiques

**DORIS AND ROY ISAACS**  
BUY AND SELL  
614-872-3720



7525 EAST PIKE  
NORWICH, OHIO 43767

MON THRU SAT 10-5:30 SUN 12-5:30  
SUMMER EVENING HOURS BY CHANCE

## The DAZE

**\*SPECIAL OFFER**  
to NCC friends \$2. off  
the 1 year subscription  
price when on this form  
or copy of.

The Original National monthly newspaper dedicated to the buying, selling & collecting of colored glassware and china including Depression Glass and the Elegant Glass (Cambridge, Heisey, Fostoria, etc.) We educate and inform you each month with feature articles by top notch columnists, readers "finds", club happenings, show news and a multitude of ads. Find those missing pieces to your 30s, 40s or 50s pattern. Can't identify it? Perhaps we can help "Keep up with what's happening with a subscription to the DAZE. Buy, sell or trade from the convenience of your easy chair.

Name \_\_\_\_\_ Street \_\_\_\_\_

City \_\_\_\_\_ State \_\_\_\_\_ Zip \_\_\_\_\_

1 yr \$19 2 yrs \$37 \$2. Single Current Copy

Exp date \_\_\_\_\_ Card No. \_\_\_\_\_

Signature \_\_\_\_\_

Orders to D.G.D., Box 57NC, Otisville, MI 48463

Please allow 30 days for your first issue - Canadian subscribers, add \$1. per year and subscribe by charge card only! This Special Offer may not be combined with any other special offer.

# DEALERS



# DIRECTORY

NOTE: When writing to the Dealers listed here, please enclose a SASE!

<p><b>SANDY'S ANTIQUE MALL</b> 617 Wheeling Ave. Cambridge, OH 43725 Phone 614-432-2570</p> <p><b>COLLECTOR'S ITEMS</b></p> <p>Summer 9-6 Daily * Winter 9-4:30 Mon-Sat</p>	<p><b>BENICIA ANTIQUE SHOP</b> 305 First Street Benicia, California 94510</p> <p><b>OPEN 11 AM - 5 PM</b> Closed Monday</p> <p>Z. E. LOPES 707-745-0978</p> <p><b>VISIT HISTORIC BENICIA</b> and its 28 shops Off Interstate 80 North of San Francisco</p>	<p><b>THE MUTED SWAN ANTIQUES</b> 5486 Peachtree Rd. Chamblee, GA 30341 Heart of Camblee Antique Row Specializing in Cambridge, Heisey and Fostoria</p> <p>Bill &amp; Pat Miller 404-451-7620</p>
<p><b>MILBRA'S MATCHING SERVICE</b> P.O. Box 363, Rio Vista, TX 76093 Milbra Long 817-645-6066 FOSTORIA * CAMBRIDGE * HEISEY DEPRESSION ERA GLASSWARE BUY AND SELL</p>		<p><b>ARMORY ANTIQUES</b> 168 West Main Street Plain City, OH 43064</p> <p><b>QUALITY THINGS</b> Heisey, China, Silver, Furniture Mon-Sat 10-5 VISA/MC 614-873-4890</p>
<p><b>THE GLASS URN</b> 456 West Main Street, Suite G Mesa, AZ 85201 602-833-2702</p> <p>Mail Order Shows Open Shop</p> <p>CAMBRIDGE, FOSTORIA, HEISEY, ETC.</p>	<p><b>ANTIQUES ON THE MALL</b> SPECIALIZING IN CAMBRIDGE GLASS</p> <p>Stagecoach Mall - Bldg 3 - Norwich, OH Virginia Bennett 614-432-4483 64183 Warne Drive, Cambridge, OH 43725</p>	<p><b>GATEWAY ANTIQUE MALL</b> 21122-134th Avenue North, Rogers, MN 55374 I-94 &amp; 101 (Exit #207, Turn North) Open 10-6, 7 Days 612-428-8286 Elaine Storck, Proprietor* Diane Overson, Mgr.</p>
<p><b>ETTELMAN'S DISCONTINUED CHINA &amp; CRYSTAL</b> Cambridge a Speciality</p> <p>P.O.Box 6491-CB Corpus Christi TX 78466 Phone 512-888-8391 Include S.A.S.E.</p>	<p><b>D &amp; D ANTIQUES</b> Columbus, Ohio</p> <p>Dick Slifko SHOWS ONLY</p>	<p><b>DEER TRAIL ANTIQUES RONI SIONAKIDES</b> 517-669-5981 6565 W. Herbisoq Rd. DeWitt, MI 48820 Fostoria, Tiffin, Duncan, Cambridge</p>
<p><b>THE GLASS CUPBOARD</b> 39 Shire Oaks Drive Pittsford, New York 14534</p> <p>Marcia Ellis Cambridge, Duncan Miller 716-586-7596 Shows, Mail Order, Appt.</p>	<p><b>JUDY'S ANTIQUES</b> Judy Bennett 422 S. Ninth Street (Corner of Jefferson) Cambridge, Ohio 43725 BUYING Ph.614-432-5855 SELLING CAMBRIDGE GLASS MY SPECIALTY</p>	<p><b>"HAPPINESS IS"</b> Buddy and Kathy Stultz 3106 Warren Court, Glen Allen, VA 23060 804-672-8102 Write or Call Us ----- We Do Ship</p>
<p><b>ELEGANT GLASSWARE</b> Barbara Brock 26 Fayette St. Martinsville, VA 24112 804-724-6762 Cambridge - Heisey - Duncan - Fostoria</p>	<p><b>GREEN ACRES FARM</b> 2678 Hazelton Etna Rd., Pataskala, OH 43062 (State Route 310 North) Sat &amp; Sun 1-7 PM 614-927-1882 Antiques, Crystal Glass and Collectibles</p>	<p><b>CROW'S NEST ANTIQUES</b> Constance Crow Buying &amp; Selling Elegant Depression Era Glassware Austin Antique Mall 8822 McCann Austin, TX 78758 512-371-0244</p>
<p><b>YOU CAN ADVERTISE YOUR ANTIQUe SHOP HERE!</b></p>	<p><b>PATCHES OF VIRGINIA</b> Specializing in China and Glass Virginia T. Houston 34116 Roberts Rd., Eastlake, OH 44095 Phone: 216-975-8315</p>	<p><b>CRYSTAL LADY</b> 1817 Vinton St., Omaha, NE 68108 Joann D. Hagerty Bus. 402-341-0643 Res. 402-391-6730 Specializing in Elegant Glass &amp; Collectibles</p>
<p><b>YOU CAN ADVERTISE YOUR ANTIQUe SHOP HERE!</b></p>	<p><b>REMEMBRANCES</b> 7597 Daphne Dr., No. Syracuse NY 13212 Shirley S. Ladouceur 315-458-5297 ANTIQUES and COLLECTIBLES MAIL ORDER SHOWS APPOINTMENTS</p>	<p><b>MARGARET LANE ANTIQUES</b> 2 E. Main St., New Concord, OH 43762 Lynn Welker 614-826-4418 Cambridge Glass Matching Service Hours Mon-Fri 1-5 PM or by Appointment</p>
<p><b>GLASS RESTORATION</b></p> <p>BRILLIANT DON &amp; LYNNE CRYSTAL WORMLAND ELEGANT MT. CLEMENS, MICH DEPRESSION 313-468-3519</p>	<p><b>WATKINS</b> (Fine Quality) <b>CAMBRIDGE GLASS SHOP</b> 1429 Marquand Ave. (Corner of Woodlawn) Cambridge, OH 614-432-4460 Lana Watkins</p>	<p><b>HELEN &amp; JIM KENNON</b> Heisey, Cambridge, Fostoria, Duncan, Imperial, Fenton, Tiffin P.O. Box 114, Brookville, OH 45309 PH: 513-833-5406 SHOWS ONLY</p>



National Cambridge Collectors, Inc.

P. O. Box 416, Cambridge, Ohio 43725

A nonprofit organization dedicated to the preservation and study of Cambridge Glass

You Are Cordially Invited  
To Become A Member Of The

NATIONAL CAMBRIDGE COLLECTORS, INC.

Benefits derived from membership include: receipt of our club publication, The Cambridge CRYSTAL BALL; informative Quarterly Meetings; Antique Shows; Auctions; other special events; and unlimited admission to the museum.

The Cambridge CRYSTAL BALL is published the first of each month. This newsletter contains educational and interesting articles, questions and answers, information on reproductions and reissues, notices of all club functions, classified advertisements, dealers directory, and many other features of interest to collectors of Cambridge Glass.

Yearly dues are \$15.00 for Individual Members and \$3.00 for each Associate Member. All members have voting rights, but only one issue of the CRYSTAL BALL will be mailed per household.

Name (please print) \_\_\_\_\_ \$15.00

Mailing Address \_\_\_\_\_

City \_\_\_\_\_ State \_\_\_\_\_ Zip \_\_\_\_\_

Associate Members: (Must be at least 12 years of age and living in the same household.)

1. Name \_\_\_\_\_

2. Name \_\_\_\_\_

3. Name \_\_\_\_\_

Total number of Associate Members \_\_\_\_\_ @ \$3.00 each ..... \$ \_\_\_\_\_

TOTAL AMOUNT ENCLOSED: \$ \_\_\_\_\_

Please make check payable to: NATIONAL CAMBRIDGE COLLECTORS, INC.

Recommended by \_\_\_\_\_

# Happy Easter

by PAUL E. WHITE

When in the news the Easter Bunny  
Begins to take the Ground Hog's place  
The Girls in all their finery  
And baby chicks begin their race.  
St. Patrick and the Valentines  
Bring greens and reds galore  
But they can't touch sweetie's glamour  
When the Easter Parade's in store.  
With an orchid on her shoulder -  
Curly peeping beneath her chapeau  
Over pastel skirts and blouses,  
Boys, you've no place in this show!  
Easter means it's springtime  
Springtime means summer's not far,  
And all the drab of the winter  
Bows out to the Easter Bazaar!

## NCC Museum of Cambridge Glass

The museum is located on U.S. Route 40, one-eighth mile east of I-77 near Cambridge. Hours: 10 a.m. to 4 p.m., Wednesday through Saturday; noon to 4 p.m., Sunday (March through October). Phone 614/432-4245.  
Closed Mondays, Tuesdays, Easter and the Fourth of July.

National Cambridge Collectors, Inc.  
P. O. Box 416, Cambridge, Ohio 43725

FIRST-CLASS MAIL  
U.S. POSTAGE  
PAID  
So. Vienna, Ohio  
46369  
Permit No. 15

FIRST CLASS MAIL

## Membership Renewal Notice

This is your last issue of the *Crystal Ball*—if the date on your address label reads 4-92.  
Please renew now!