

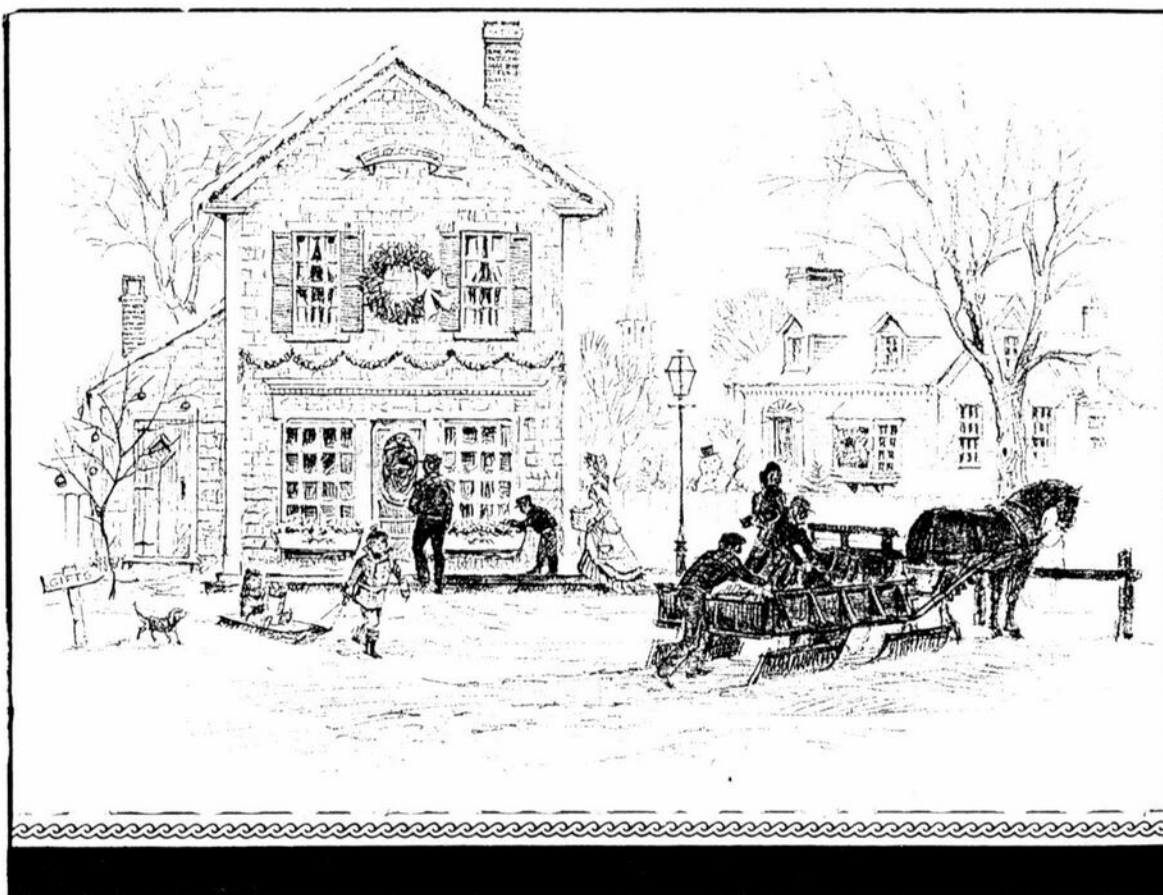


Cambridge Crystal Ball

Published monthly by the National Cambridge Collectors, Inc.
to encourage and report the discovery of the elegant and boundless product
of the Cambridge Glass Company of Cambridge, Ohio

Issue No. 224

December 1991



*At this beautiful season
may your heart know every
happiness*

WARMEST WISHES
FOR THE HOLIDAY SEASON
From your
Officers, Board of Directors
and
CRYSTAL BALL Staff

Cambridge Crystal Ball

Official Publication of National Cambridge Collectors, Inc. a non-profit corporation with tax exempt status. Published once a month for the benefit of its members.

Membership is available for individual members at \$15 per year and additional members (12 years of age and residing in household) at \$3 each. All members have voting rights, but only one *Crystal Ball* will be mailed per household.

Back issues of the *Crystall Ball* are available (beginning with Issue No. 1, May 1973) for members only. Cost: \$1.00 each or 12 issues for \$10.00.

1991-92 Officers & Committee Chairpersons

President	Joy R. McFadden
Vice-President	Marybelle Moorehead
Secretary	David B. Rankin
Treasurer	David B. Rankin
Sergeant-at-Arms	Judy Momirov
Acquisitions	Joe Andrejcek
Budget & Finance	David B. Rankin
By-Laws	Marybelle Moorehead
Convention Facilities	J.D. Hanes, Judy Momirov
Membership	Phyllis D. Smith
Museum--Facilities	Doyle Hanes
Museum--Interior	J.D. Hanes
Non-Glass Items	J.D. Hanes
Nominating	Mark A. Nye
Program	Cynthia A. Arent
Project	R. Clarke West
Publications	Mark A. Nye
Public Relations	Phyllis D. Smith
Publicity	Cynthia A. Arent
Study Group Advisor	Judy Momirov
1992 Auction	Lynn M. Welker
1992 Antique Show	Mary Beth Hackett
1992 Convention	Marybelle Moorehead
1992 Flea Market	Marlene & Harold Snyder
Crystal Ball Editor	Phyllis D. Smith

Classified Advertising Rates

10 cents per word \$2.00 Minimum
 We cannot mix type size in classified advertisements. Abbreviations and initials will count as words. Payment in full **must** accompany all ads.

Display Advertising Rates

(Camera-ready ads preferred)	Members	Non-Members
1/8 page	\$6.00	\$10.00
1/4 page	10.00	15.00
1/2 page	18.00	25.00
3/4 page	25.00	35.00
Full page	33.00	45.00

Dealers Directory

Five-line maximum \$18.00 for 12 months

Cambridge *Crystal Ball* assumes no responsibility for items advertised and will not be responsible for errors in price, description or other information.

Advertising copy, articles, club news and notices must be in our hand by the 10th of each month to assure publication in our next issue.

Paid advertisements containing reproductions or new glass will not knowingly be accepted for publication.

Opinions or information stated in any signed article or letter printed in the *Crystal Ball* are those of the authors and may or may not agree with National Cambridge Collectors, Inc. The Editor reserves the right to refuse and to edit any material submitted for publication to conform with the editorial style of the *Crystall Ball*.

Please Address All Correspondence to:

National Cambridge Collectors, Inc.
 P.O. Box 416, Cambridge, Ohio 43725
 President -- Joy R. McFadden
 Secretary -- David B. Rankin
 Editor -- Phyllis Smith 513/323-3888
 N.C.C. Museum -- 614/432-4245

Please notify us immediately of any change in your address.

Please enclose an SASE when requesting information.

CAMBRIDGE GLASS BOOKS FOR SALE

By National Cambridge Collectors, Inc.

- **Colors in Cambridge Glass***
 128 pages, 60 color plates, fully indexed
 Hardbound with price guide \$19.95
 - **1930-34 Cambridge Glass Company Catalog Reprint***
 250-page reprint of original catalog
 Paperback with price guide \$14.95
 - **1949-53 Cambridge Glass Company Catalog Reprint***
 300-page reprint of original catalog
 Paperback with price guide \$14.95
 - **1956-58 Cambridge Glass Company Catalog Reprint***
 164-page reprint of original catalog
 Paperback \$6.95
- *For NCC members only, the above publications are available at a 10 percent discount.

By Bill and Phyllis Smith

- **Cambridge Glass 1927-1929**
 66-page reprint of original catalog
 Paperback w/identification guide \$7.95

By Cambridge Buffs Study Group

- **Nearcut**
 108-page reprint of 1910 Cambridge catalog
 Paperback with price guide \$9.95

By Mark A. Nye

- **Cambridge Rose Point**
 94 pages, fully indexed
 Paperback with value guide \$12.95

By Mary, Lyle and Lynn Welker

- **Cambridge Glass Company**
 120 pages of reprints from eight old catalogs
 Paperback \$10.00
- **Cambridge, Ohio Glass in Color II**
 Spiralbound \$5.95

By Harold and Judy Bennett

- **1903 Cambridge Glass Company Catalog Reprint**
 106-page reprint of an original catalog
 Paperback \$7.50

Address your orders to:

Books
 National Cambridge Collectors, Inc.
 P.O. Box 416
 Cambridge, OH 43725

Please add postage and handling to your order (first book, \$2.00; each additional book, 50 cents). Ohio residents add 6 percent state sales tax.

Dealer discounts available—please write!



President's Message

When you read this, it will be December. Thanksgiving is past and Christmas is just three weeks away. I hope you had a special Thanksgiving holiday with family and friends and may I wish you all a Blessed and Joyous Christmas Season.

Begin to make your plans now for 1992. The first event will be the:

Quarterly Meeting

Friday, February 28th - 8 P.M.

The program will be the Preview for the Annual Auction.

The All-Cambridge Glass Auction
Shenandoah Inn, Old Washington, Ohio
Saturday, February 29th - 10 A.M.

Auction Chairman Lynn Welker reports a nice selection of items for sale and that the Auction List will be included in the January issue of the CRYSTAL BALL.

The 1992 Antique Show & Sale will move to the new Pritchard-Laughlin Civic Center in Cambridge. It is a lovely new facility. Several motels in Cambridge have agreed to hold blocks of rooms; and information appears elsewhere in this issue. Consider this a reminder to make your reservations NOW.

There is a special six month presentation (April thru September 1992) in Columbus, Ohio, called "Ameriflora." This event is being advertised worldwide, and recent information indicates Disney involvement. Rooms are going fast, over a large area of the state, including Cambridge, due to "Ameriflora."

A committee is still working on details. One of the prime concerns for the committee will be to limit your travel, as much as possible, to and from events. Further details will be available at the February meeting and in future issues of the CRYSTAL BALL.

Clarke West submitted his resignation as Treasurer to the Board of Directors, at the November meeting. The Board accepted his resignation and appointed David Rankin to fill the remainder of this term. Therefore, David will now serve as Recording Secretary and Treasurer. Clarke West will continue to serve on the Board of Directors.

Phyllis Smith notified the Board of her intention and desire to continue to serve as Membership Chairman and CRYSTAL BALL Editor.

We appreciate her dedication during these personally difficult times.

Finally, the Board approved an expenditure to apply new siding to the Museum. Weather permitting, it will be completed before the Museum opens for the 1992 season.

May you enjoy a Peaceful and Blessed Holiday Season.

In Memoriam

JABE TARTER
Akron, Ohio

Jabe Tarter, 76, died Friday, November 1, 1991, at Akron General Medical Center. Tarter, whose popular antiques column appeared in the Beacon Journal for 15 years, was member #1 of the National Cambridge Collectors. During the early years of N.C.C., he contributed several articles to the Cambridge CRYSTAL BALL.

He is survived by two sisters, a brother-in-law, and his friend of 46 years, Paul Miller. He was preceded in death by his parents, his wife, two sons, and eleven brothers and sisters.

Donations may be made to the Kent State University Museum, Tarter-Miller Glass Gallery, at Rockwell Hall, Kent, OH 44242.

RALPH L. WILSON
Byesville, Ohio

Ralph L. Wilson, 82, died Friday, October 25, 1991, at his home. He was an employee of the Cambridge Glass Co. from 1925 until it closed.

Ralph started at the bottom and worked his way up to the position of glass blower. His wife of fifty years, Pearl, finished and packed glass for export at the factory from 1936 to 1943.

Survivors include his wife, a son, two daughters, a brother, a sister, 10 grandchildren, and 11 great-grandchildren. N.C.C. member Debbie (Wilson) Lauer is a grandchild.

MOTEL INFORMATION

CAMBRIDGE FAIRDALE INN

6405 Glenn Highway, Cambridge, Ohio 43725. 614-432-2304. Located at the intersection of Interstate 70, Exit 176 and U.S. Routes 22 and 40, two miles west of the Courthouse. Clean comfortable rooms at reasonable rates. Close to The Living Word Outdoor Drama. AAA and Mobile rated, senior citizen rates.

\$25.00 Single, \$30.00 Double. No extra for children. One week cancellation notice. Approximately 6 rooms available.

DEER CREEK MOTEL AND RESTAURANT

2325 Southgate Parkway, Cambridge, Ohio 43725. 614-432-6391. Located at Exit 178 off of Interstate 70, State Route 209 south. Also Exit 44B on Interstate 77. Pool, color TV, air conditioning and waterbeds. For reservations, call 1-800-637-2917.

\$27.95 Single, \$33.95 Double. \$5.00 extra per person. 24 hour cancellation notice. Approximately 80 rooms available.

EL RANCHO

6653 Glenn Highway, Cambridge, Ohio 43725. 614-432-2373. Located at Interstate 70, Exit 176, turn right. Five minutes from The Living Word Outdoor Drama. In-room coffee, color cable TV, direct dial telephone. Walking distance to restaurant. AAA, senior citizen and commercial rates.

\$32.50 Single, \$39.50 Double. Over age 12 \$3.00 extra. One week cancellation notice. Additional discount for Thursday-Saturday stay. Approximately 30 rooms available.

BEST WESTERN CAMBRIDGE

1945 Southgate Parkway, Cambridge, Ohio 43725. 614-439-3581. Located at Exit 178 off Interstate 70. Two story wood constructed building with exterior corridors and entrances. 95 guest rooms, cocktail lounge, 24-hour restaurant, outdoor pool, playground, complimentary morning coffee, free HBO, ESPN and ample parking.

\$49.00 Single or Double. No extra for children. One week cancellation notice. Approximately 50 rooms available.

HOLIDAY INN-CAMBRIDGE

P.O.Box 1270, Cambridge, Ohio 43725. 614-432-7313. Located at Interstate 70, Exit 178, travel north on State Route 209, 1/16th of a mile to the west side of State Route 209. The Landing Restaurant, The Dockside Lounge, meeting and banquet facilities with seating from 140-240 persons. 107 newly remodeled sleeping rooms. Free Showtime, ESPN, CNN and WTBS.

\$49.00 Single, \$53.00 Double. No extra for children. One week cancellation notice. Approximately 25 rooms available.

CAMBRIDGE TRAVELODGE

P.O.Box 158, Southgate Parkway, Cambridge, Ohio 43725. 614-432-7375. Exit 178 off of Interstate 70, 48 newly renovated rooms, heated pool, whirlpool, sauna, HBO, ESPN, senior citizen rates, AAA three-diamond rating. Complimentary coffee and doughnuts, restaurants nearby.

10% off prevailing rate. One week cancellation notice. Approximately 15 rooms available.

DAYS INN CAMBRIDGE

2328 Southgate Parkway, Cambridge, Ohio 43725. 614-432-5691. Located at Exit 178 off of Interstate 70. 103 guest rooms, complimentary continental breakfast. Pool, meeting rooms, king suites, HBO, ESPN, restaurant and lounge adjacent.

\$53.00 Single, Double, Triple or Quad occupancy. Children free. Cancellation policy depends on type of reservation. Approximately 45 rooms available.

Rates do not include 12% sales and bed tax. Remember to mention National Cambridge Collectors for the special rate.

**GUERNSEY COUNTY VISITORS & CONVENTION BUREAU
2250 SOUTHGATE PARKWAY
P.O. BOX 427
CAMBRIDGE, OHIO 43725
614-432-2022**

Motel Information

1992 Convention Lodging Facilities

by JUDY MOMIROV and J. D. HANES
Convention Facilities Co-chairpersons

It probably seems strange to have an article in the December issue concerning the 1992 Convention. However, with the move to the Pritchard-Laughlin Civic Center, and with the summer tourist season and upcoming events in the Cambridge area, you will need to make your motel reservations EARLY!!!

Columbus, Ohio will be hosting the AmeriFlora Exhibition, celebrating the 500th anniversary of Christopher Columbus' landing in the New World. Believe it or not, there are tour groups that have already made reservations, in the Cambridge area, for this exhibit.

Listed on the previous page are lodging facilities with which we have negotiated special rates for the 1992 Convention. The descriptions for the properties are taken from the tourist guide, published by the Cambridge/Guernsey County Visitors and Convention Bureau, and are being used with their permission.

Being listed here does not imply any endorsement by the National Cambridge Collectors or its Board of Directors. These are listed only as a convenience and service to you, our members.

The properties listed with an address of Route 40 or Glenn Highway are located approximately one-half mile from the Pritchard-Laughlin Civic Center. The other properties are on State Route 209 at I-70, also known as Southgate Parkway. Distance from the Southgate Parkway hotels is approximately three to four miles from the Civic Center. Maps showing the Civic Center will be provided.

Again, we want to emphasize, **Please make your reservations EARLY, and mention N.C.C. when making them, in order to receive their special rates.**

If you have any questions about the properties please contact them directly, or call or write to the:

**Guernsey Co. Visitors & Convention Bureau
2250 Southgate Parkway - P.O. Box 427
Cambridge, OH 43725 --- Phone: 614/432-2022**

Museum Moments

by J. D. HANES

As you know, the Museum closed for the season on October 31st. Even though we are officially closed there will be plenty of work going on this winter. The glass needs to be cleaned and rearranged, dusting to be done, continuation of the physical inventory, and re-numbering of all items is to be finished!

This year saw a marked increase in attendance. Visitors this year, not including the members who visited during the Auction, Convention or August Quarterly meeting, totaled 1,001, an increase of 222 over last year. We think the extra advertising done on local and national levels has paid off very well.

Many of you have asked about receiving a list of Museum owned glass. This list is now available in a computer printout. This can be used in helping to find items to donate to the Museum. The Museum Interior committee had thought of printing this list in the C.B. However, to list these items properly, it would take over two years, using two pages each month. Those of you interested in having a copy of this printout may send \$2, to cover printing and postage, to the club address. You can update your copy as items are donated and listed in the C.B. each month.

In October I was guest speaker for the Three Rivers D.G. Club in Pittsburgh. It was a real pleasure to present a program on Cambridge Glass to this nice group of people.

Also in October we had a charter bus of glass enthusiasts from the Bellaire Glass & Artifacts Museum. These folks are very interested in keeping the heritage of American handmade glass alive. They were touring glass museums in the area, and ours was their first stop.

I had hoped that the loan contracts and inventory updates would be returned by now. Many of you have expressed interest in seeing the total of museum owned items, versus those on loan. The idea being that it would help encourage donations. When these are all returned, I will pass this information along to you.

It seems strange to be writing an article on November 1st and suddenly realizing that the next article won't appear until 1992. May you all have a Blessed Holiday Season.

WORKER OF THE MONTH

RICHARD LONG

by Judy Momirov

The Cambridge Cordials' Worker of the Month is Richard Long of Cambridge, Ohio. Mr. Long worked in the Hot Metal Department, working with the pressed wares line. He began working at the Cambridge Glass plant in 1925, when he was a sophomore in high school. After school was out for the day, Richard would put in an evening shift at the factory, and on Fridays he would often be asked to work the night shift as well. At that time, according to the Child Labor Laws, only those fifteen or older could work past 10 P.M.; and it was not unusual to be asked to work a double shift. One of the first jobs he remembers was making doorknobs with Jake Matthews. About 600 could be made in a turn and these were made constantly, year in and year out.

Working in the Head Shop as a finisher, it was common for him to work with candlesticks, bowls, vases, and large items such as the punch bowls. That department consisted of a Presser, the Glass Gatherer, and a Turnout Boy as a helper and then a Finisher and two Warm End Boys. As a finisher, it was his job to take a piece of pressed ware and reheat it in the Glory Hole to polish it or to heat it so that it would be pliable in order to change the shape. Mr. Long would take a punty or 5' pipe with a solid end and gather some red hot glass which he would then roll on marble to flatten or point the end. This would then be pressed against a portion of a pressed piece to attach it so that the piece could then be returned to the furnace. If polishing, the piece would be heated to burn off the rough edges or glaze it. Mr. Long commented that Cambridge spent extra money on finishing or polishing in order to improve the quality of their glassware. A piece of glass would also need to be reheated in order to change the appearance of the ware. Various shapes were created from one mold design; a bowl might become a plate or a flip bowl or the top edges could be fluted or curved to attain a pleasing shape. All of this work was done in the Hot Metal department.

Another type of work done by the men in this department was the swung vase. The shape of the vase would be elongated by a worker, taking the vase and repeatedly swinging it back and forth until the desired length or



RICHARD LONG

shape was reached. Mr. Long indicated that these were generally made from a mold such as a cracker jar but using a smaller plunger when the mold was poured to allow thicker sides so there would be adequate glass for the stretching process. This was heavy work and therefore required a man of some strength. These vases were often made at night because a great deal of space was needed to complete this process.

Strength was also required to gather enough glass for some of the large items such as punch bowls. A Swan punch bowl might require two men and as much as 15 lbs. of glass. Two or three men would be needed to push the levers down on the mold of a large punch bowl. Afterwards the finisher would set the punch bowl on a paddle which had a place to hold the head of a swan, and he would return it to the Glory Hole to polish it. Then the swan's head would be turned to the proper position.

One type of glass that Mr. Long found to be particularly interesting was the Optic ware. A blower would blow the glass in an optic mold which had iron strips down the sides of the mold. This would cause marks on the glass, and then the worker would blow it out, creating a perfect optic pattern.

He continued to work at the Glass House until June 7, 1939 when a tragic accident ended his
continued on next page

QUARTERLY MEETING REPORT

by CINDY ARENT

The National Cambridge Collectors met at the Holiday Inn, Cambridge Ohio, for their November Quarterly meeting. There were 43 members present.



Lynn Welker admires a Japonica Vase

Following the dinner, Lynn Welker conducted the "Show & Tell" session. Some of the more unusual items brought by members were: a royal blue keyhole stem urn vase with Japonica (Hawthorne) decoration; a tomato Decagon salad plate; an #1066 ivy ball with Blossom Time etching; a carnival Inverted Strawberry covered butter; an early blue crackle covered pitcher with gold stipple; a topaz Caprice 3-part relish; an experimental ivory tankard; a divided relish with enameled Civil War man and woman; and a bud vase with Dorothy Thorpe decoration.



"Show & Tell" table at Quarterly Meeting

The business meeting was called to order by president Joy McFadden. She called on various committee chairpersons for reports. It was announced by Marybelle Moorehead that the

theme for the 1992 Convention will be "Cambridge Novelties." She also stated that she would like for the banquet table decorations to be the Cambridge swans.

During the Antique Show report, Mary Beth Hackett stated that the 1992 Antique Show & Sale will be held at the new Pritchard-Laughlin Civic Center in Cambridge. Most functions throughout the Convention weekend will be held at the facility.

The program for the evening was provided by the Miami Valley Study Group. Ron Hufford introduced the program. He explained that due to the death of Study Group member Bill Smith, they were unable to put together a presentation. However, with the permission of Phyllis Smith, a video tape made recently of Bill, presenting a program to another glass group, would be shown. During the tape, Bill explained the Etching process from start to finish, using information he had gathered from research and talking to former workers from the Etching Department.

A raffle sponsored by the Cordials Study Group was won by Norma Hufford. The next Quarterly meeting will be February 28, 1992, at 8 PM in the Shenandoah Inn, Old Washington, Ohio. The Annual All-Cambridge Glass Auction will be held the following day beginning at 10 AM. Complete details will be included in the January 1992 newsletter.

WORKER continued from page 6

career. He recalled that at the time first aid was merely some iodine and a bandaid or some Blackjack for burns. That day, an oil tank under a Glory Hole exploded, blowing out the end of the tank which caught Mr. Long across the hip area, throwing him some 20 feet over the head of the finisher and over some pots of molten glass. The boom was heard over five miles away. Luckily, a nurse, Mr. Hurd, was passing by and stopped to be of help. He indicated that this was no time for a bandaid and that this man needed hospital care immediately. Mr. Long spent 75 days in Swan Hospital, unable to walk because of a crushed pelvis. Since he was unable to return to the work which he did previously, he decided to retrain for another career. He remembers the Glass House as a place where men took great pride in creating the quality glassware for which Cambridge Glass was known.

HURRICANE LAMPS

by MARK A. NYE

This type of candleholder derives its name from the presence of the glass shade (aka chimney) designed to shield the candle flame from breeze and light wind; whether or not it would function in a hurricane is something I would rather not undergo the experience to find out. Cambridge hurricane lamps usually, but not always, consist of four components: shade, candleholder (which serves as the lamp base), bobèche, and prisms; and can be broken down into their components, that is, they are not a fixed unit. The bobèche and prisms are decorative in nature and could be omitted from any of the Cambridge hurricane lamps without altering the basic function of providing candlelight in the presence of a breeze or light wind.

The January 1940 edition was the first Cambridge catalog to feature hurricane lamps. It is, however, no doubt safe to assume this type of candleholder entered the Cambridge line prior to that date, probably sometime during the second half of the 1930s. The initial 1940 catalog devoted a single page to showing three hurricane lamps and its price list makes mention of a fourth with a note "not illustrated." As happened with previous catalogs, supplemental pages began to be issued and three pages (one as early as June 1940) were dedicated to illustrating this item. A fourth supplemental page showed an additional hurricane lamp along with three other items.

The June 1949 Cambridge catalog pictured three hurricane lamps on one page and, sometime later, three additional hurricane lamps, all part of the Cambridge Arms line, became available. From the catalog issued following the reorganization and reopening in 1955, one could have ordered any one of four hurricane lamps or five shades. There was no longer a page or section devoted to hurricane lamps; those being offered appeared on several different pages. Hurricane lamps and shades were discontinued sometime between October 1956 and the issuance of the 1958 price list, thus ending a twenty year stint in the Cambridge line.

In addition to being offered undecorated, hurricane lamps, like candleholders, candelabra and epergnes, were available with the popular Cambridge etchings and a few rock crystal engravings. It is doubtful hurricane

lamps in color, shades or bases, were ever offered.

Note that in all cases, while the candlestick remains unaltered in appearance, if it was to be used as a hurricane lamp base, a collar to hold the shade or chimney was added to the top of the candle socket.

The #1590 hurricane lamp consists of the #1588 candlestick, two #23 bobèches, 10 #5 prisms and two chimneys (no number provided). The #1601 utilizes the Pristine #506 candlestick, #27 bobèche, six #4 prisms and the same chimney as #1590. The very familiar candlestick #648 is the base for the #1603 hurricane lamp and completing it is a #27 bobèche, six #1 2½" prisms and chimney.

The #1601 and #1603 were available, from the 1940 catalog, etched Blossom Time, Chantilly, Diane, Portia, Elaine, Rose Point and Wildflower. As listed in the January 1940 price list, #1601 came with an etched chimney or shade and plain base, while the #1603 had a plain chimney and etched shade. The #1590 is known with Rose Point etched shades and a plain base.

The fourth and originally not illustrated lamp is the #1607 consisting of the Mt. Vernon #131 candlestick, #27 bobèche, six #4 prisms and chimney. This item was later illustrated on a supplemental catalog page and will be seen on one of the catalog pages illustrating this article. (see page 10)

The first of the supplemental pages, to be issued showing hurricane lamps, was page 263 and probably was distributed in late spring 1940. The #1607 was finally illustrated as were five other hurricane lamps.

The #1604 was covered by a design patent applied for in February 1940, and issued the following August. Quoting from the patent:

"The essential feature of the design resides in the lamp base comprising a bowl having a candle socket provided in its bottom at the center of the bowl, the candle socket being encircled by a concentric circular partition wall located at a spaced distance from the candle socket."

continued on page 14



The Cambridge Glass Company



HURRICANE LAMPS



1590 Twin Hurricane Lamp
Height 9½ in.



1601
Hurricane Lamp
Height 8 in.



1603 Hurricane Lamp
Height 10 in.

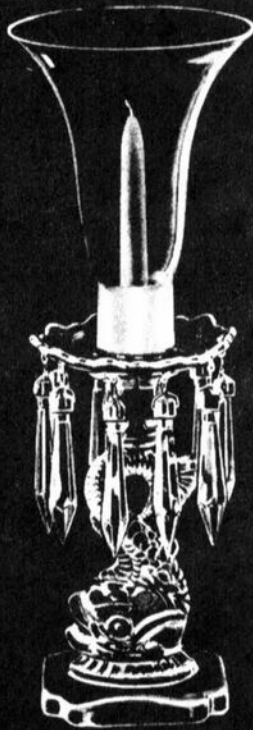
JANUARY 1, 1940



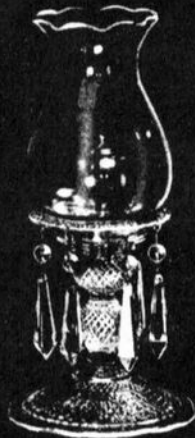
The Cambridge Glass Company



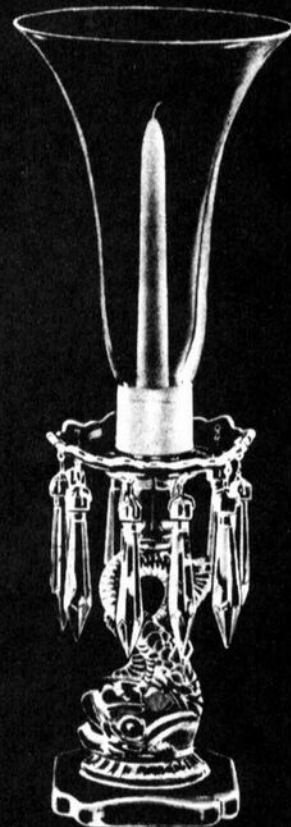
Hurricane Lamps



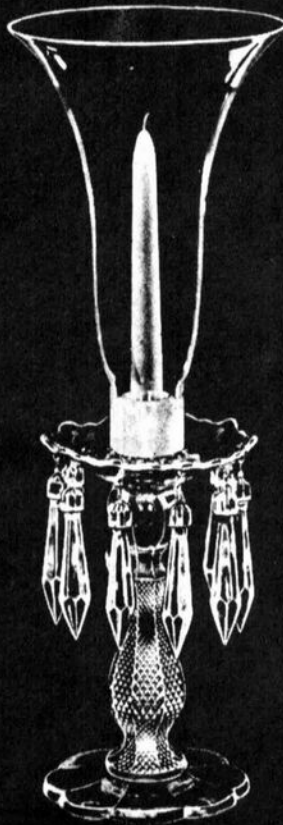
1612/1614 - 16 in.



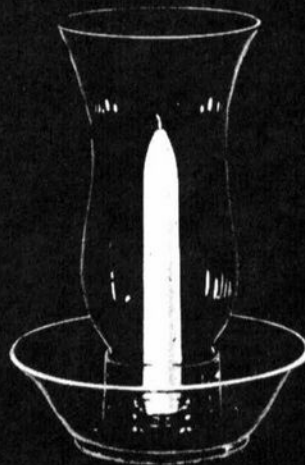
1607 - 9 in.



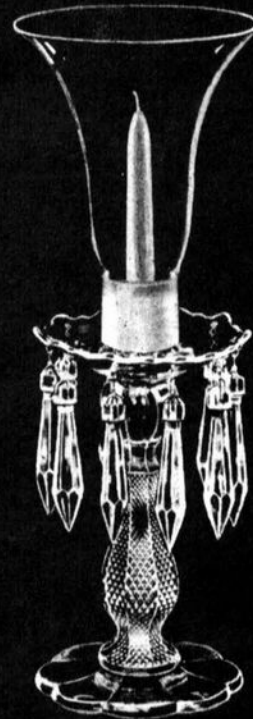
1612/1615 - 18 in.



1613/1615 18 in.



1604 10 in
Patent 121,759



1613/1614 - 16 in.



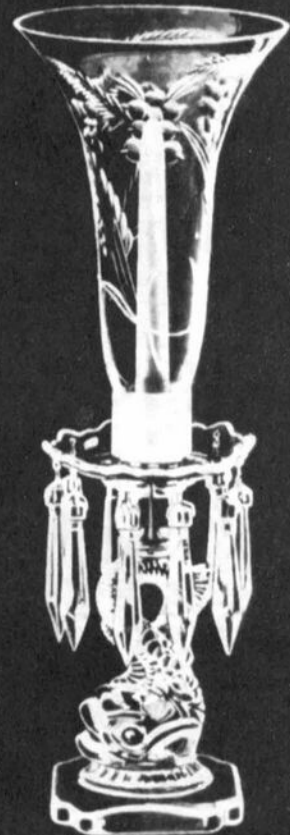
The Cambridge Glass Company



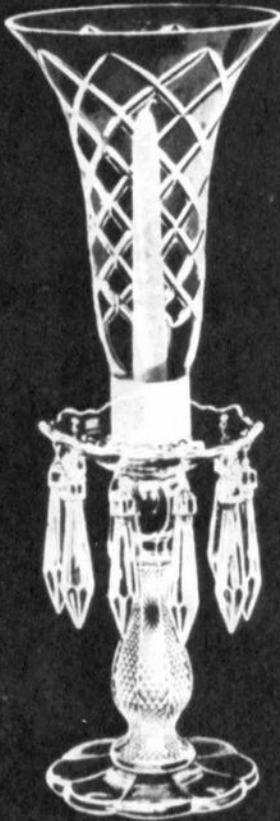
Hurricane Lamps



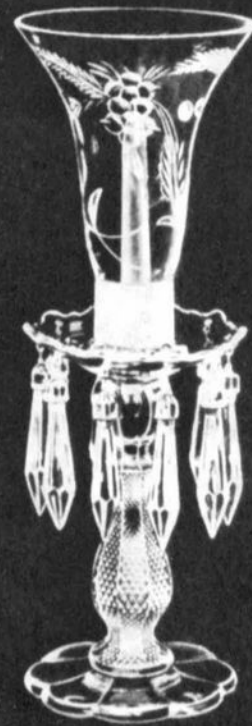
1612/1614—18 in.
R. C. Eng. Manor (1003)



1612/1615—18 in.
R. C. Eng. Montrose (1004)



1613/1615—18 in.
R. C. Eng. Manor (1003)



1613/1614—16 in.
R. C. Eng. Montrose (1004)

Cambridge, Ohio - - - U. S. A.



The Cambridge Glass Company



Hurricane Lamps



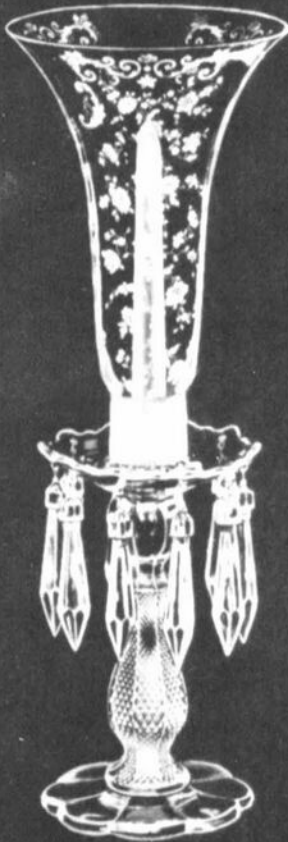
1612/1614—16 in.
Etched Rose Point



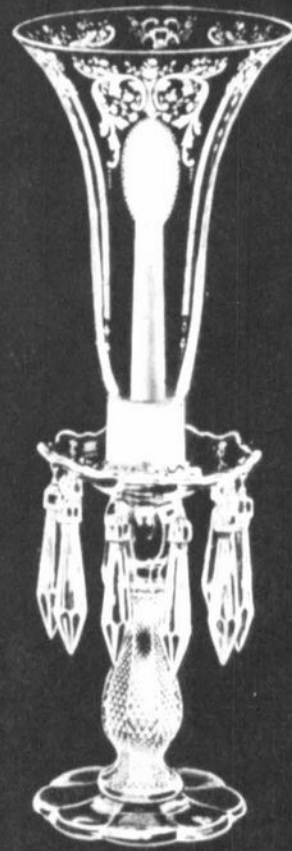
1613/1614—16 in.
Etched Blossom Time



1612/1615—18 in.
Etched Wildflower



1613/1615—18 in.
Etched Chantilly



1613/1615—18 in.
Etched Candlelight

Cambridge, Ohio - - - U. S. A.

Club News

National Cambridge Collectors, Inc.
Quarterly Membership Meeting
November 2, 1991
Holiday Inn, Cambridge, Ohio

The meeting was called to order at 8:10 PM by President Joy McFadden. In attendance were 42 members including 11 board members.

By motion duly made and seconded reading of the minutes of the last meeting were dispensed with. There were no corrections.

President McFadden reported that Clarke West had resigned as treasurer and that Dave Rankin had been elected to replace him at the board meeting earlier this date.

Treasurer's report by Dave Rankin: As of September 30, 1991, checking account balance \$7,365.40; money market account \$49,338.52 for a total of \$56,703.92.

President McFadden announced the following additional committee appointments:

Budget and Finance: Dave Rankin, Chairman.

Acquisitions: Joe Andrejcek, Chairman; Lynn Welker, J.D. Hanes, Doris Isaacs and Joy McFadden additional members.

Nominating: Mark Nye, Chairman; Vicki Wollenhaupt, Charles Upton. Tarzan Deel was also appointed pending his acceptance.

Non-glass: Mike Arent and Tarzan Deel were appointed as additional members of the committee.

Possible candidates for replacement of board member Bill Smith, deceased September 19, 1991, are still under consideration.

COMMITTEE REPORTS:

MEMBERSHIP: Mark Nye read a written report from Chairman Phyllis Smith; 1037 individual members, 387 associates, 7 honorary for a total of 1431.

CRYSTAL BALL: Mark Nye read a written report from Editor Phyllis Smith indicating that both the October and November Crystal Ball mailings were on time in spite of the loss of her spouse. She thanked the Hufford's, Wollenhaupt's and Rankin's of the Miami Valley study group for assisting with the mailings. She also thanked everyone for the expressions of sympathy extended to her and her family

during the last few weeks. She also stated that she would continue as editor at least through the 1992 convention including the July, 1992 issue.

PUBLIC RELATIONS: Mark Nye read a written report from Chairman Phyllis Smith indicating that the Michigan D.G. show was the only event on their schedule and that she had to cancel.

BUDGET AND FINANCE: no report from Dave Rankin, Chairman.

AUCTION: J.D. Hanes reported for chairman Welker that the 1992 auction is full and the lists of accepted glass will be mailed to the consignees during the following week. Due to the large amount of glass offered, he will select only part of each consignee's list for actual sale. He will confirm the availability of the Shenandoah Inn as the auction location.

ANTIQUÉ SHOW AND SALE: Chairman Mary Beth Hackett reported that the show and sale will be at the Pritchard Laughlin Civic Center next year. More details will be announced as they become available.

FLEA MARKET: The flea market will tentatively be held at the pavilion at the Cambridge city park next year.

MUSEUM INTERIOR: Chairman J.D. Hanes reported that an attendance record was set in the 1991 season with 1004 visitors, 225 more than 1990. These figures exclude attendance during the open house at the convention. Visitors came from 31 states and 3 foreign countries: Canada, England and France. He also reported that 8 updated loaned glass lists had not yet been returned. The list of items owned by NCC is available and, due to the size of the list, will be mailed for \$2.00 postage and handling.

MUSEUM EXTERIOR: Chairman Doyle Hanes reported that several shingles had been blown off the museum roof and had been replaced. Due to the condition of the shingles, the roof will have to be watched carefully. No leaks have been detected. The board has authorized re-siding the exterior.

NON-GLASS ITEMS: Chairman J. D. Hanes reported that the committee was seeking assistance from several knowledgeable glass people to appraise the molds owned by NCC for insurance valuation purposes.

BYLAWS: Chairman Marybelle Moorehead had no report.

CONVENTION: Chairman Moorehead reported that the convention is still scheduled for June 25-28, 1992. This year's theme will be "Cambridge Novelities" and swans will be used as centerpieces.

STUDY GROUP ADVISORY: Chairman Judy Momirov reported that the Miami Valley study group is proceeding with the etching book project and that the Cambridge Cordials study group will continue with the worker of the month interviews.

PROGRAM AND ENTERTAINMENT: Chairman Cindy Arent had no report.

PUBLICITY: Chairman Arent reported that advertisements had been placed in the Treasure Chest and Ohio Travel Guide and that the board had authorized placement of an ad in the 1-800-BUCKEYE magazine.

PROJECTS: Chairman Clarke West reported that no projects were started yet.

ACQUISITIONS: Chairman Joe Andrejcek was not present, no report.

PUBLICATIONS: Chairman Mark Nye reported that the Miami Valley study group is proceeding with the etching book and he hopes to have the updated Rose Point book by the auction. The stemware book update is next on the schedule and may be ready by the convention.

CONVENTION FACILITIES SPECIAL COMMITTEE: Cochairman J. D. Hanes reported that the annual convention will be moved to the Pritchard Laughlin Civic Center and, if possible, all events will be held at the civic center except the Thursday night session. Approximately 250 motel rooms are available but it should be emphasized that it is important to make motel reservations as soon as possible. A list of motels will be published in the December Crystal Ball.

OLD BUSINESS: None.
NEW BUSINESS: None.

The next meeting will be at 8:00 PM February 28, 1992 at the Shenandoah Inn.

Upon motion duly made and seconded the meeting was adjourned at 8:40 PM.

Submitted by,
David B. Rankin

HURRICANE LAMPS . . continued from page 8

In addition to being available plain, the #1604 was available engraved #1008; #988; and #1003 (Manor).

The #1612/1614 and #1612/1615 both make use of a variant of the #50 Dolphin candlestick, known, in this instance, as #1612; the variation being the addition of the collar to hold the chimney. Likewise, #1613/1615 and #1613/1614 have as their base candlestick the #1613, a variant of the 8" Mt. Vernon #35 candlestick. The last four digits of each item number designate the shade and all four incorporate a #29 bobèche and 10 #10 prisms.

The #1614 and #1615 shades have been documented etched Rose Point. The four lamps using these shades will have plain or not etched bases. These same two shades engraved Manor and Montrose combined with bases #1612 and #1613, bobèche and prisms into hurricane lamps were also being offered during spring and summer 1940 and probably for sometime after that.

At some point in time, hurricane lamps #1612/1614, #1612/1615, #1613/1614, and #1613/1615 also became available with shades etched Blossom Time, Wildflower, Chantilly and Candlelight and were illustrated on a catalog page issued sometime during the early 1940s. Were they also etched Elaine, Portia, and Diane? Probably, although at this time I have no documentation in my possession to prove this. Collectors having examples are asked to write.

The final hurricane lamp shown in the 1940 catalog and its supplemental pages is the #1617 consisting of the Martha line #494 4" candlestick (with added collar) and a chimney. Since as designed, this basic candlestick has an attached bobèche, none was added for the hurricane lamp.

By June of 1949, all of the hurricane lamps discussed here, with the exception of the #1603 and #1617, had been discontinued.

I would like to take this opportunity to wish all my readers Merry Christmas, Happy Hanukkah, Happy Holidays.



— Classified —

FOR SALE: Several pieces Heatherbloom, Candlelight stemware, and Elaine pieces. 804/724-6762.

FOR SALE: Rosepoint. 4½" dome lid (minor nicks) with underplate \$450; mushroom cordial \$75; individual ftd. nut \$75; #38 juice tumblers (3) \$52 each; #38 12oz. tumblers (6) \$55 each; ftd. vinegar & oil, neck repaired \$100; ftd. marmalade glass lid \$120; #3400/54 cups & saucers (4 sets) \$42 per set. **B. J. Hanson**, 4730 Rim Rock Road., Oceanside, CA 92056.

Study Club News

STUDY GROUP #13 - SOUTH WEST OHIO "MIAMI VALLEY, OHIO"

The Miami Valley (Ohio) Study Group held their meeting October 8th at the Huber Heights Public Library. There were ten members present. Our Christmas party will be a joint dinner with the Fostoria Study Group on December 10th.

There was further discussion of the Etching book project and it was decided to proceed although Bill Smith and his expertise will be sorely missed.

"Show & Tell" produced the following pieces: topaz caprice #122 8" 3-part relish; gold krystal Mt. Vernon #9 8" covered urn; amethyst Mt. Vernon #32 6" cereal; peachblo Wetherford covered candy; primrose basket w/black decoration; and a carmen Mt. Vernon salt & pepper. submitted by Susan Rankin

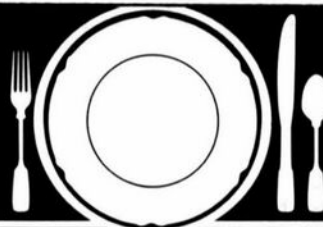
Aladdin

ELECTRIC LAMPS, 1930-1956

ALADIN • VELVEX • OPALIQUE • ALACITE

Deluxe Hardbound - Color - 229 pages
\$24.95 ppd. - Add \$3 for first class

Order your Book from the Author:
J.W. COURTER
R-1 • Simpson, IL 62985



How to Find Those Missing Pieces.

The world's largest source of discontinued and obsolete crystal -- as well as china and flatware -- Replacements, Ltd., buys and sells over 36,000 different patterns.

If you need a piece or several pieces to add to your collection ... or if you'd like to sell some unneeded extras ... call or write us. We can provide you with a complete printout of available pieces in your pattern. Or we'll let you know our prices for the pieces you wish to sell.

Replacements, Ltd.: a 100,000 square foot facility; 1.4 million pieces; over 600,000 satisfied customers. Contact us, or come see our showroom. Let us help you complete your collection ... or maybe you'll help add to ours.

REPLACEMENTS, LTD.

Call (919) 697-3000, FAX (919) 697-3100, or write:
1089 Knox Road • P. O. Box 26029, Dept. C • Greensboro, NC 27420

OVER 6800 CAMBRIDGE PIECES

L. A. MANESS

RT. 1, BOX 552, ASHLAND, VA 23005
(804) 798-1825

C = MARKED P & I \$3.50 CTN

#3900 line Carnation 5-part relish.....	\$ 39
SS#16 crown tuscan 7" compote C.	\$ 65
SS#18 crown tuscan 3-ftd. 10" bowl C.....	\$ 85
Diane 9 oz. goblet w/#3122 stem (5) each.....	\$ 25
Diane 5 oz. ftd. tumbler (6) ea.	\$ 20
<u>DECAGON</u>	
Lt. emerald cup & saucer C (8) set.....	\$ 15
Lt. emerald 7½" plate C (4) each.....	\$ 10
Gold krystal cup & saucer C (3) set.....	\$ 15
Gold krystal 8-3/8" plate C (6) each.....	\$ 11
Gold krystal 11" center hdl. plate.....	\$ 45

VISA/MASTERCARD WELCOME



N.C.C. CHRISTMAS SHOPPING SUGGESTIONS



For a Merry Cambridge Christmas, there are many items available from N.C.C. to make any Cambridge collector happy on Christmas morning. Be sure to place your order early and we will do our best to make sure everything arrives in plenty of time for Christmas giving.

Ohio residents add 6% State Sales Tax. Send your order, along with check or money order to cover same, to:

National Cambridge Collectors, Inc.
P. O. Box 416
Cambridge, OH 43725

MEMBERSHIP in N.C.C. is always a welcome gift and it keeps giving all year long. We will send a Christmas card signed as you request, along with membership card(s), and all information, to the person of your choice. Please send all needed information to reach us no later than December 5th. Individual Membership \$15 - Associates (at least 12 years of age and living in the same house) \$3. each.

BOOKS are always a welcome gift - especially so if you collect Cambridge Glass. For a list of all available Cambridge books, please see our Book ad on page 2 this issue. Please follow instructions in the ad concerning sales tax and P&I. **Updated (1990) Price Guides** are now available to **NCC MEMBERS ONLY** for the 1930-34 & 1949-53 Reprints at \$3.00 each; and the NCC Color Book at \$2. These prices include P&H.

CRYSTAL BALL BACK ISSUES make a nice addition to any Cambridge collectors' library. We have all back issues beginning with Issue #1 and continuing thru the current issue. Cost is \$10 for 12 issues and \$1 each for quantities less than 12. Write for information on issues concerning a particular pattern, etc.

CRYSTAL BALL BINDERS - top quality, clear vinyl covered, 1½", 3-ring, loose leaf, holds approximately 20-24 issues. \$6 plus \$1 P&H.

BOOKENDS - Scotty, black frosted (3rd in the Museum Reissue Series); Eagle, cobalt blue

(4th of the Museum Reissue Series). A few left at \$30.00 each (your choice), plus \$3 P&I.

CUP PLATES - with bulldog replica and NCC name - crystal, amethyst and teal (limited numbers of each) \$7 plus \$1 P&I.

CONVENTION FAVORS - add \$1.50 each P&I. Paperweight w/NCC logo and date - gold krystal (1982) \$14 each. Windsor blue (1980) \$16.

Georgian Tumbler, 2½ oz. w/NCC logo and date - amber (1985); gold krystal (1986) \$14 each; marked N.C.C. no date - pink (1984) \$12; marked "10th Anniversary 1973 N.C.C. 1983" cobalt blue (1983) \$18.

Nearcut Marjorie Punch Cup, light blue, marked "N.C.C. Convention 1987" in gold \$16. Cambridge Square Cigarette Holder, cobalt blue, marked "N.C.C. Convention 1988" in gold \$20.

Mt. Vernon Cordial, teal blue, marked "N.C.C. Convention 1989" in gold \$20.

Mt. Vernon Cordial pink, marked "N.C.C. Convention 1990" in gold \$15.

PAMPHLETS - reprints of original Cambridge booklet, pamphlets and leaflets - priced each, includes P&I.

Booklet "Cambridge Arms" \$2.

Pamphlet "Blossom Time," "Rose Point," "Chantilly," "Cambridge Square," "Martha" \$1. Leaflet "Rondo," "Star," "Laurel Wreath," "Roxbury," "Lynbrook" 50¢.

MARBLE (new 1988) milk glass, marked "The Cambridge Glass Co., Est. 1901" \$5 each.

T-SHIRT orange w/N.C.C. logo in black \$5 each (write for available sizes).

VCR TAPE - "The Crystal Lady." Movie of factory and workers, made from old 16mm film - 20 minutes. \$15 each, plus \$2 P&I.

NEW BOOK - "National Trail & Old Forty in Verse & Pictures." by Paul E. White. 40 pages - spiral bound. \$4.95 each, plus \$1 P & H.

LYNN WELKER

2 EAST MAIN STREET, NEW CONCORD, OHIO 43762
Phone: 614/826-7414

Prices Each.	UPS Extra.	Excess Refunded.	Return Privilege.
ADONIS		CUTTINGS	
#3500 champagne.....	\$ 22	Lucia #615 cigarette box.....	\$ 40
#3500 cocktail.....	\$ 24	Lucia #394 10" 5-part celery & relish.....	\$ 35
#3500 goblet.....	\$ 24	Lynbrook #3790 cocktails (4).....	\$ 10
Much more, write or call.		Achilles #3121 champagne.....	\$ 22
CHANTILLY		Montrose #3121 bell, original....	\$ 60
#3625 goblets (5).....	\$ 20	Rondo #555 7½" plates, w/labels (6).....	\$ 7
#3625 champagnes (4).....	\$ 18	SWANS	
#3625 cocktails (6).....	\$ 20	Lt. emerald 3" style I, signed...\$	35
#3625 sherbets (2).....	\$ 15	Peachblo 3" style I, signed.....\$	35
Martha sugar & cream, pair.....	\$ 30	Gold krystal 3" style II, signed.\$	40
#3500/64 12" celery & relish....	\$ 40	Emerald 3" style III.....	\$ 35
#1617 hurricane lamp, complete..	\$ 100	Mandarin gold 3" style III.....	\$ 35
DAFFODIL		Carmen 3" style III.....	\$ 75
#3779 9 oz. low stem goblet (4).\$	25	Crown tuscan 3" style III.....	\$ 32
DIANE		Milk glass swan punch cup.....	\$ 40
#3122 goblets (11).....	\$ 18	#3011 NUDES	
#3122 12 oz. iced teas (7).....	\$ 20	Royal blue cocktail.....	\$ 100
#3122 cocktails (12).....	\$ 16	Royal blue goblet.....	\$ 120
#3122 wines (2).....	\$ 30	Pistachio brandy.....	\$ 120
#3400 6" plates (6).....	\$ 8	Forest green claret.....	\$ 80
PORTIA		Amethyst ivy ball.....	\$ 140
#3900/136 5½" comport.....	\$ 40	#11 crystal lg. Shell comport....	\$ 100
#3130 bell, Cambridge label.....	\$ 70	FIGURALS	
ROSEPOINT		#1111 12" Heron flower frog.....	\$ 95
#3121 champagnes (8).....	\$ 20	#3500/78 Ram's Head cov'd. candy gold encrusted Elaine.....	\$ 150
#3400 8½" plates (8).....	\$ 12	#1123 Dresden Lady figure.....	\$ 100
#3400 cups & saucers (4).....	\$ 30	MISC. COLORS	
CAPRICE - Crystal		#3500/74 moonlight Ram's Head candlesticks, pair.....	\$ 100
#300 oyster cocktails (6).....	\$ 15	#119 carmen basket, crystal handle, 11" tall.....	\$ 85
#300 cocktails (8).....	\$ 15	#646 amber candlesticks, etched Apple Blossom (keyhole) pair.\$	45
#17 cups & saucers (4).....	\$ 12	#18 C. tuscan 10" Shell bowl.....	\$ 50
#180 5 oz. tumblers (6).....	\$ 16	#21 C. tuscan 6" cov'd. candy, w/gold.....	\$ 60
#98 individual cruets (2).....	\$ 18	Ivory Wetherford berry dish.....	\$ 25
#67 candlesticks, pair.....	\$ 20	#3900 mandarin gold 13" cakestand, very rare, original label....	\$ 50
Rare cheese stand.....	\$ 125	#345 amber Caprice 5½" vase.....	\$ 60
Much more, write or call.		Helio 5½" basket.....	\$ 55
MT. VERNON		Green Cleo 9½" dinners, wear (6).\$	20
#21 5 oz. ftd. juices (6).....	\$ 6		
#3 10 oz. ftd. tumblers (5).....	\$ 6		
#20 12 oz. ftd. iced teas (6)...	\$ 8		
#27 3 oz. wines (4).....	\$ 7		
#52 amber 40 oz. decanter.....	\$ 50		

The

DAZE

***SPECIAL OFFER**
to NCC friends \$2. off
the 1 year subscription
price when on this form
or copy of

The Original National monthly newspaper dedicated to the buying, selling & collecting of colored glassware and china including Depression Glass and the Elegant Glass (Cambridge, Heisey, Fostoria, etc.) We educate and inform you each month with feature articles by top notch columnists, readers "finds", club happenings, show news and a multitude of ads. Find those missing pieces to your 30s, 40s or 50s pattern. Can't identify it? Perhaps we can help "Keep up with what's happening with a subscription to the DAZE. Buy, sell or trade from the convenience of your easy chair.

Name _____ Street _____

City _____ State _____ Zip _____

1 yr \$19 2 yrs \$37 \$2. Single Current Copy

Exp date _____ Card No. _____

Signature _____

Orders to D.G.D., Box 57NC, Otisville, MI 48463

Please allow 30 days for your first issue - Canadian subscribers, add \$1. per year and subscribe by charge card only! This Special Offer may not be combined with any other special offer.

Stage Coach
Antique Mall

WELCOME TO GLASS COUNTRY!



RT. 40 ONE-HALF MILE WEST OF I-70 EXIT #164
MANY DEALERS - WIDE SELECTION - PLENTY PARKING

WE FEATURE GLASSWARE OF:
CAMBRIDGE, HEISEY, FENTON, & FOSTORIA
Plus Art Pottery & a General line of Antiques

DORIS AND ROY ISAACS
BUY AND SELL
614-872-3720



7525 EAST PIKE
NORWICH, OHIO 43767

MON THRU SAT 10-5:30 SUN 12-5:30
SUMMER EVENING HOURS BY CHANCE

COLUMBUS ANTIQUE FLEA MARKET

(ANTIQUES AND COLLECTIBLES)

DECEMBER 8th

Ohio State Fairgrounds—Lausche Building—Off I-71 Exit 17th Ave.

SUNDAY ONLY—7:00 AM TO 4:00 PM

SCHEDULE

JANUARY 12th ** MARCH 1st ** APRIL 5th ** SEPTEMBER 6th
OCTOBER 11th ** NOVEMBER 8th ** DECEMBER 13th

150 Quality Dealers

Show admission \$1.50 • Children under 12 free

Heated/Air Conditioned • Concession



*"The Friendly
Family Business"*

4214 North High Street, Columbus, Ohio 43214
(614) 267-8163 (614) 263-6830 (614) 885-2352

DEALERS



DIRECTORY

NOTE: When writing to the Dealers listed here, please enclose a SASE!

<p>SANDY'S ANTIQUE MALL 617 Wheeling Ave. Cambridge, OH 43725 Phone 614-432-2570</p> <p>COLLECTOR'S ITEMS</p> <p>Summer 9-6 Daily * Winter 9-4:30 Mon-Sat</p>	<p>BENICIA ANTIQUE SHOP 305 First Street Benicia, California 94510</p> <p>OPEN 11 AM - 5 PM Closed Monday</p>	<p>THE MUTED SWAN ANTIQUES 5486 Peachtree Rd. Chamblee, GA 30341 Heart of Camblee Antique Row Specializing in Cambridge, Heisey and Fostoria</p> <p>Bill & Pat Miller 404-451-7620</p>
<p>MILBRA'S MATCHING SERVICE P.O. Box 363, Rio Vista, TX 76093 Milbra Long 817-645-6066 FOSTORIA * CAMBRIDGE * HEISEY DEPRESSION ERA GLASSWARE BUY AND SELL</p>	<p>Z. E. LOPES 707-745-0978</p> <p>VISIT HISTORIC BENICIA and its 28 shops Off Interstate 80 North of San Francisco</p>	<p>Elegant Depression Era Glassware</p> <p>ABBA ANTIQUES 1157 Charlie Lane Liburn, GA 30247 Bill & Barbara Adt 404-279-1942 Shows, Mail Order & by Appointment</p>
<p>THE GLASS URN 456 West Main Street, Suite G Mesa, AZ 85201 602-833-2702</p> <p>Mail Order Shows Open Shop</p> <p>CAMBRIDGE, FOSTORIA, HEISEY, ETC.</p>	<p>ANTIQUES ON THE MALL SPECIALIZING IN CAMBRIDGE GLASS Stagecoach Mall - Bldg 3 - Norwich, OH Virginia Bennett 614-432-4483 64183 Wayne Drive, Cambridge, OH 43725</p>	<p>GATEWAY ANTIQUE MALL 21122-134th Avenue North, Rogers, MN 55374 I-94 & 101 (Exit #207, Turn North) Open 10-6, 7 Days 612-428-8286 Elaine Storck, Proprietor* Diane Overson, Manager</p>
<p>ETTELMAN'S DISCONTINUED CHINA & CRYSTAL Cambridge a Speciality</p> <p>P.O.Box 6491-CB Corpus Christi TX 78466 Phone 512-888-8391 Include S.A.S.E.</p>	<p>D & D ANTIQUES Columbus, Ohio</p> <p>Dick Slifko SHOWS ONLY</p>	<p>DEER TRAIL ANTIQUES RONI SIONAKIDES 517-669-5981 6565 W. Herbison Rd. DeWitt, MI 48820 Fostoria, Tiffin, Duncan, Cambridge</p>
<p>THE GLASS CUPBOARD 39 Shire Oaks Drive Pittsford, New York 14534</p> <p>Marcia Ellis Cambridge, Duncan Miller 716-586-7596 Shows, Mail Order, Appt.</p>	<p>JUDY'S ANTIQUES Judy Bennett 422 S. Ninth Street (Corner of Jefferson) Cambridge, Ohio 43725 BUYING Ph.614-432-5855 SELLING CAMBRIDGE GLASS MY SPECIALTY</p>	<p>"HAPPINESS IS" Buddy and Kathy Stultz 3106 Warren Court, Glen Allen, VA 23060 804-672-8102 Write or Call Us ----- We Do Ship</p>
<p>ELEGANT GLASSWARE Barbara Brock 26 Fayette St. Martinsville, VA 24112 804-724-6762 Cambridge - Heisey - Duncan - Fostoria</p>	<p>GREEN ACRES FARM 2678 Hazelton Etna Rd., Pataskala, OH 43062 (State Route 310 North) Sat & Sun 1-7 PM 614-927-1882 Antiques, Crystal Glass and Collectibles</p>	<p>CROW'S NEST ANTIQUES Constance Crow Buying & Selling Elegant Depression Era Glassware Austin Antique Mall 8822 McCann Austin, TX 78758 512-371-0244</p>
<p>THE HITCHING POST 7467 S. R. 88 Ravenna, OH 44266 Ph. 216-296-3686 D. McDaniel CAMBRIDGE - HEISEY - GENERAL LINE</p>	<p>PATCHES OF VIRGINIA Specializing in China and Glass Virginia T. Houston 34116 Roberts Rd., Eastlake, OH 44095 Phone: 216-975-8315</p>	<p>CRYSTAL LADY 1817 Vinton St., Omaha, NE 68108 Joann D. Hagerty Bus. 402-341-0643 Res. 402-391-6730 Specializing in Elegant Glass & Collectibles</p>
<p>YOU CAN ADVERTISE YOUR ANTIQUe SHOP HERE!</p>	<p>REMEMBRANCES 7597 Daphne Dr., No. Syracuse NY 13212 Shirley S. Ladouceur 315-458-5297 ANTIQUES and COLLECTIBLES MAIL ORDER SHOWS APPOINTMENTS</p>	<p>MARGARET LANE ANTIQUES 2 E. Main St., New Concord, OH 43762 Lynn Welker 614-826-4418 Cambridge Glass Matching Service Hours Mon-Fri 1-5 PM or by Appointment</p>
<p>GLASS RESTORATION BRILLIANT DON & LYNNE CRYSTAL WORMLAND ELEGANT MT. CLEMENS, MICH DEPRESSION 313-468-3519</p>	<p>WATKINS (Fine Quality) CAMBRIDGE GLASS SHOP 1429 Marquand Ave. (Corner of Woodlawn) Cambridge, OH 614-432-4460 Lana Watkins</p>	<p>HELEN & JIM KENNON Heisey, Cambridge, Fostoria, Duncan, Imperial, Fenton, Tiffin P.O. Box 114, Brookville, OH 45309 PH: 513-833-5406 SHOWS ONLY</p>



National Cambridge Collectors, Inc.

P O Box 416, Cambridge, Ohio 43725

A nonprofit organization dedicated to the preservation and study of Cambridge Glass

You Are Cordially Invited
To Become A Member Of The

NATIONAL CAMBRIDGE COLLECTORS, INC.

Benefits derived from membership include: receipt of our club publication, The Cambridge CRYSTAL BALL; informative Quarterly Meetings; Antique Shows; Auctions; other special events; and unlimited admission to the museum.

The Cambridge CRYSTAL BALL is published the first of each month. This newsletter contains educational and interesting articles, questions and answers, information on reproductions and reissues, notices of all club functions, classified advertisements, dealers directory, and many other features of interest to collectors of Cambridge Glass.

Yearly dues are \$15.00 for Individual Members and \$3.00 for each Associate Member. All members have voting rights, but only one issue of the CRYSTAL BALL will be mailed per household.

Name (please print) _____ \$15.00

Mailing Address _____

City _____ State _____ Zip _____

Associate Members: (Must be at least 12 years of age and living in the same household.)

1. Name _____

2. Name _____

3. Name _____

Total number of Associate Members _____ @ \$3.00 each \$ _____

TOTAL AMOUNT ENCLOSED: \$ _____

Please make check payable to: NATIONAL CAMBRIDGE COLLECTORS, INC.

Recommended by _____

N.C.C. MEMBERSHIP IS A PERFECT CHRISTMAS GIFT!

Merry Christmas!

by Paul E. White

It's Christmas
And the tree'll be trimmed
In memory of those
Who joined us wrapping presents
And helped us tie the bows.
Who joined in singing carols
And gathering at the feast
In memory of the Birthday
Of a saviour from the east.
At year's end we'll remember
Beginnings from the past
As friendships still surround us
And support us, first and last.
The Holidays are gracious
Our chance to thank you all,
For those who send best wishes
Dear ones, who write and call.

DECEMBER 1991

NCC Museum of Cambridge Glass

The museum is located on U.S. Route 10, one eighth mile east of I-77 near Cambridge. Hours: 10 a.m. to 4 p.m., Wednesday through Saturday; noon to 4 p.m., Sunday (March through October). Phone 614/432-4245.
Closed Mondays, Tuesdays, Easter and the Fourth of July.

National Cambridge Collectors, Inc.

P O Box 416 Cambridge Ohio 43725

FIRST CLASS MAIL

FIRST-CLASS MAIL
U.S. POSTAGE
PAID

So. Vienna, Ohio
45369
Permit No. 15

Membership Renewal Notice

This is your **last** issue of the *Crystal Ball*—if the date on your address label reads 12-91.

Please renew now!