



# Cambridge Crystal Ball

Published monthly by the National Cambridge Collectors, Inc.  
to encourage and report the discovery of the elegant and boundless product  
of the Cambridge Glass Company of Cambridge, Ohio

Issue No. 222

October 1991

## President's Message

The older I get, the faster time seems to fly. No sooner does one CRYSTAL BALL arrive and it is time for me to write another article.

It seems impossible that summer is over and school has already started. The days are getting shorter, garage sales are drawing to



a close, and football season has started. Before you know it, Christmas shopping will be upon us.

I hope you are planning to attend the November Quarterly meeting to be held at

**The Holiday Inn, Cambridge, Ohio  
November 2nd - beginning at 6 pm**

Information and reservation forms appeared in the September CRYSTAL BALL and are repeated in this issue as well. The Miami Valley Study Club will present the program on Etchings. This program promises to be informative and educational. I hope to see all of you there.

By the time you read this article, the deadline will have passed for Lynn Welker to receive your list of glass consigned to the Auction. He will contact you later with details on receiving your glass.

I would like to say thank you to those of you who have written with words of encouragement and suggestions. All of your suggestions are welcome and encouraged. I will pass the suggestions to the appropriate committee for consideration. Remember, this is your club and the Board members represent you in all that we do to improve our organization.

Till I see you in November  
--- Happy Collecting!



## Halloween

\*\*\*\*\*

# Cambridge Crystal Ball

Official publication of National Cambridge Collectors, Inc., a non-profit corporation with tax exempt status. Published once a month for the benefit of its members.

Membership is available for individual members at \$15 per year and additional members (12 years of age and residing in household) at \$3 each. All members have voting rights, but only one *Crystal Ball* will be mailed per household.

Back issues of the *Crystal Ball* are available (beginning with Issue No. 1, May 1973) for members only. Cost: \$1.00 each or 12 issues for \$10.00.

## 1990-91 Officers & Committee Chairpersons

President .....	Joy R. McFadden
Vice-President .....	Marybelle Moorehead
Secretary .....	David B. Rankin
Treasurer .....	R. Clarke West
Sergeant-at-Arms .....	Judy Momirov
Acquisition .....	Joy McFadden
Budget & Finance .....	David B. Rankin
By-Laws .....	Marybelle Moorehead
Membership .....	Phyllis D. Smith
Museum—Facilities .....	Doyle Hanes
Museum—Interior .....	J. D. Hanes
Non-Glass Items .....	J. D. Hanes
Nominating .....	Willard P. Kolb
Program .....	Cynthia A. Arent
Project .....	R. Clarke West
Publications .....	William C. Smith
Public Relations .....	Bill & Phyllis Smith
Publicity .....	Cynthia A. Arent
Study Group Advisor .....	Judy Momirov
1991 Auction .....	Lynn M. Welker
1991 Antique Show .....	Joy R. McFadden, Mary Beth Hackett
1991 Convention .....	Marybelle Moorehead
1991 Flea Market .....	Marlene & Harold Snyder
Crystal Ball Editor .....	Phyllis D. Smith

## Classified Advertising Rates

10 cents per word \$2.00 minimum  
We cannot mix type size in classified advertisements. Abbreviations and initials will count as words. Payment in full **must** accompany all ads.

## Display Advertising Rates

(Camera ready ads preferred)	Members	Non-Members
1/8 page .....	\$ 6.00	\$10.00
1/4 page .....	10.00	15.00
1/2 page .....	18.00	25.00
3/4 page .....	25.00	35.00
Full page .....	33.00	45.00

## Dealers Directory

Five-line maximum ..... \$18.00 for 12 months

Cambridge *Crystal Ball* assumes no responsibility for items advertised and will not be responsible for errors in price, description or other information.

*Advertising copy, articles, club news and notices must be in our hands by the 10th of each month to assure publication in our next issue.*

Paid advertisements containing reproductions or new glass will not knowingly be accepted for publication.

Opinions or information stated in any signed article or letter printed in the *Crystal Ball* are those of the authors and may or may not agree with National Cambridge Collectors, Inc. The Editor reserves the right to refuse and to edit any material submitted for publication so as to conform with the editorial style of the *Crystal Ball*.

### Please Address All Correspondence to:

National Cambridge Collectors, Inc.  
P.O. Box 416 Cambridge, Ohio 43725

**President** — Joy R. McFadden, 614/885-2726

**Secretary** — David B. Rankin, 513/833-4626

**Editor** — Phyllis Smith, 513/323-3888

**N.C.C. Museum** — 614/432-4245

Please notify us immediately of any change in your address.

Please enclose an SASE when requesting information.

# CAMBRIDGE GLASS BOOKS FOR SALE

*By National Cambridge Collectors, Inc.*

- **Colors in Cambridge Glass\***  
128 pages, 60 color plates, fully indexed  
Hardbound with price guide ..... \$19.95
  - **1930-34 Cambridge Glass Company Catalog Reprint\***  
250-page reprint of original catalog  
Paperback with price guide ..... \$14.95
  - **1949-53 Cambridge Glass Company Catalog Reprint\***  
300-page reprint of original catalog  
Paperback with price guide ..... \$14.95
  - **1956-58 Cambridge Glass Company Catalog Reprint\***  
164-page reprint of original catalog  
Paperback ..... \$6.95
- \*For NCC members only, the above publications are available at a 10 percent discount.

*By Bill and Phyllis Smith*

- **Cambridge Glass 1927-1929**  
66-page reprint of original catalog  
Paperback w/identification guide ..... \$7.95

*By Cambridge Buffs Study Group*

- **Nearcut**  
108-page reprint of 1910 Cambridge catalog  
Paperback with price guide ..... \$9.95

*By Mark A. Nye*

- **Cambridge Rose Point**  
94 pages, fully indexed  
Paperback with value guide ..... \$12.95

*By Mary, Lyle and Lynn Welker*

- **Cambridge Glass Company**  
120 pages of reprints from eight old catalogs  
Paperback ..... \$10.00
- **Cambridge, Ohio Glass in Color II**  
Spiralbound ..... \$5.95

*By Harold and Judy Bennett*

- **1903 Cambridge Glass Company Catalog Reprint**  
106-page reprint of an original catalog  
Paperback ..... \$7.50

### Address your orders to:

Books  
National Cambridge Collectors, Inc.  
P.O. Box 416  
Cambridge, OH 43725

Please add postage and handling to your order (first book, \$2.00; each additional book, 50 cents). Ohio residents add 6 percent state sales tax.

**Dealer discounts available—please write!**

# Museum Moments

by J. D. HANES

By the time most of you are reading this, we will have about one month left for this year's season at the Museum. If you are looking for a nice weekend trip to see Mother Nature's wonders of the fall foliage, may I suggest a trip to the Museum and southeastern Ohio. It really is beautiful around here this time of year.

We did get some nice donations for the Museum, in August. Let me tell you about those now.

**Bob & Marcia Ellis:** #SS66 4" candlestick in crown tuscan; #1130 11" vase in royal blue; #2868 Fan footed. sherbet in crystal, signed Nearcut; and a #2868 Fan punch cup in crystal, signed Nearcut.

**Tarzan Deel, Jr.:** #3400/67 12" celery and relish with a Lotus decoration of cut flowers and Sterling silver overlay.

**Teri Steele:** #3400/92 32 oz. decanter and 6 #3400/92 2½ oz tumblers in a pale amethyst, not heatherbloom or sun colored. It appears to be a mis-colored batch of amethyst.

There is one other donation that I have overlooked. At the time of the Auction, Bud Walker, of New Jersey, gave us some pictures for the Museum. They are family type pictures of the Bennett and Orme families. These are copies of the originals which are owned by Darlene Orme. Darlene is the widow of Wib Orme, and lives near Bud in New Jersey. She gave him permission to have copies of these made to give to the Museum. I am sorry that I overlooked these, Darlene and Bud. They are a nice addition to our collection of pictures.

We appreciate all of the donations that we have received this year. Especially getting the decanter set from Teri. That set had a long trip to Cambridge from Oregon. I will not go into detail here, but you can ask Mark Nye or myself about it.

Kelvin Moore, of Illinois, was here for a Sunday afternoon, to look through the etching books. He found a lot of the information that he was looking for. We thank the Miami Valley Study Group for their work on cleaning and printing these plates. These are a great research tool for everyone to use.

One comment that I heard at Convention this year was, that sometimes members are not sure as to who is on what committee. So, I thought that I would tell you who the Museum Interior Committee members are for this year. As you know by now, our new president, Joy McFadden, asked me to be the chairman of this committee again this year, and I agreed. Those people who have agreed to serve on the committee this year are: Shirley Beynon; Jeff Ross; Marybelle Moorehead; and Lynn Welker.

Most of you know Marybelle and Lynn from their years of service on the Board of Directors. Marybelle has served the past two years as our Convention chairman and has served on many other committees. Marybelle is employed by the Cambridge City Schools. She is also kept busy with her husband, children and grandchildren.

Lynn has served many years as the Chairman of our annual Auction and has also served the club many years at the "Show & Tell" sessions at the Convention and Quarterly meetings. He also owns Margaret Lane Antiques in New Concord, with his mother, and serves as advisor to a fraternity on the campus of Muskingum College.

Shirley lives near Old Washington, Ohio, with her husband Carl. She is a first grade teacher in the Buckeye Trail School District. Other things that keep her busy are her children and grandchildren, and her collecting. Along with glass, Shirley also has a wonderful collection of Precious Moments figurines. She and Carl are founding members of the Cambridge Cordials Study Group, and have been very helpful in cleaning of the moulds and helping out with other things for the club.

Jeff is employed by Southeastern Equipment Company in Cambridge, which is the largest distributor of Case Equipment in the world. He is the manager of the payroll department. He lives with his father and brother on their family dairy farm. Along with helping on the farm and his regular work, he collects moonlight blue Caprice and antique furniture. Jeff is also a member of the Cambridge Cordials. He graduated from the Ohio State University with a degree in Marketing.

continued on page 16

# WORKER OF THE MONTH

## Harold "Danny" Conrath

by CINDY ARENT

This month's Cambridge Glass Company employee is Harold "Danny" Conrath.



Harold Conrath  
holding one of the large gathering rods

Harold started working at the factory in August 1940. Last summer was the 50th Anniversary of his first day of work there. To mark the occasion, Harold walked the train tracks from his home to the factory, just as he did in 1940. The only trouble that he had, was when he came to the trestle it took a few tries to be able to cross. Anyone that has ever tried to walk over a railroad trestle knows that you shouldn't look down! Harold then walked inside the glasshouse where the time clock had been and reminisced for awhile. Harold stated that he was glad that he had made the trip, because now, the factory is gone.

Harold's first job at the Cambridge Glass Company was in his father's shop where he "carried in" Yardley jars. He earned 45¢ per hour. The "move" for the Yardley jars was 1,000 in four hours; and for every 100 over that, he received 10¢ extra. Harold explained that the jars were made on an "Ivory Johnson" press. Orie Mosser, foreman of the Hot Metal department, decided which jars Harold should throw away. However, if Harold threw too many away, his father would get mad, because he was in charge of the shop.

Another job that Harold had, was working on

the glaziers. The purpose of the glazier is to smooth out the rough mold edges on pieces of glass. He explained that there are different sizes of glaziers. The #1 glazier was used for small items such as ashtrays, and the #2 glazier was used for larger items, such as the star candlesticks. The glaziers were run by air motors and the "floor man" was in charge of controlling the flame. Harold explained that the flame needed to be "smoky to keep sulfur off of the glass and make it shine more."

Harold then moved on to be a gatherer. Because of his small size, he worked mostly on smaller items. Although small items are not as heavy, the move was always much larger, so you had to work faster. One of the items that he gathered for was the mayonnaise ladle. These were made on a "rotary press" which had three molds and made two ladles at a time. The lids for the salt and pepper shakers were also made in this way.

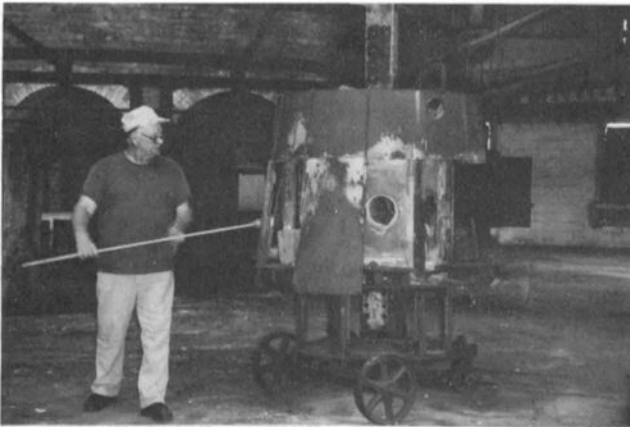
Harold also recalled working in the "jug shop," where they used the "German System" of gathering glass. In this system the gathering boy first gathers a small amount of glass on his rod and blows a small ball. He then hands it to another man that cools the rod in water and passes it back. The gathering boy then gathers more glass over the original ball. By using this system, they were able to gather the larger amounts of glass than the traditional gathering method.

Along with his brother, Leroy, Harold explained the different types of gathering rods. The smaller rod that Harold used, did not have wooden handles and the ball on the end was very small and made of steel. Leroy, however, gathered for the larger items, so his rod was longer, had a wooden handle, and the ball on the end was larger. (See photo on next page.)

They explained that they made their own rods at the factory. Leroy made the ball on the end of his rod with wet clay, which was then fired to make it hard.

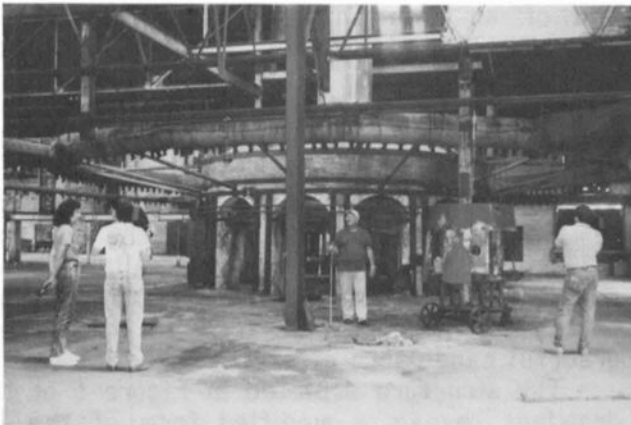
Both Harold and Leroy had a lot of praise for Orie Mosser, who was foreman of the Hot Metal department. They said that Orie would

never ask anyone to do a job that he wouldn't do himself.



Don Frontz demonstrates "Warming in" in the glory hole using a gathering rod that he made for demonstration purposes. The furnace in the background.

For example, when a hole would occur in the arches of the furnace, Orié would wrap himself in wet burlap and climb up and fix it. This was a very dangerous task, and he didn't want to risk the lives of his men. Harold and Leroy also said that Orié "knew the trade" and was always willing to help.



Don Frontz stands in front of the only remaining furnace when the factory was demolished. It was not one of the original three. The glory hole is to the right.

Harold worked at the Cambridge Glass Company for a total of four years. His video tape will be available for viewing, at the Museum, in the near future. Through his descriptions of the Hot Metal department, you can visualize what it was really like.

## N.C.C. EDUCATIONAL PROGRAMS

### FOR RENT and FOR SALE

The National Cambridge Collectors, Inc., have several educational programs available for rent. These programs are in one of two formats: 35mm slides or 8½" x 11" transparencies (for use with an overhead projector). All come with a written narrative and all, except the Caprice program, have a cassette recording of the narrative available.

FOR RENT ONLY - The programs, currently available, are as follows:

<u>TOPIC</u>	<u>FORMAT</u>
Cambridge Etchings	Slides
Cambridge Colors	Slides
Cambridge Stemware	Slides
Caprice	Slides
Cambridge History 1901-1954	Transparencies
Cambridge - The Reopen Years	Transparencies
Cambridge Arms	Transparencies
Cambridge in the 1940s	Transparencies
Cambridge Engravings	Transparencies

Each of these is suitable for use as a program at any type of Club meeting where a program on Cambridge Glass is desired. The average length of these programs, when using the prerecorded narrative, is approximately 30 minutes.

The fee for these programs is: \$15 ea.  
\$25 Deposit REQUIRED for each.  
(\$10 will be refunded when program is returned to N.C.C.)

### FOR SALE - VCR Movie "The Crystal Lady"

Includes pictures of factory and workers made from old 16mm film - 40 minutes.  
\$15 each - plus \$2 P&I

Inquiries regarding the rental & purchase of these programs should be sent to: Program Rentals, N.C.C., Inc., P.O. Box 416, Cambridge, OH 43725.

# EPERGNES & EPERGNETTES

by MARK A. NYE

An integral part of any Cambridge epergne is the arm that holds the flower vases. This arm may have a candle holder in its center or in lieu of a candleholder, a decorative knob. On December 22, 1933, Arthur James Bennett, Cambridge, Ohio, filed a patent application, serial number 703,564, for a "COMBINED FLOWER VASE HOLDER and CANDLESTICK." The item was Patented Oct. 23, 1934 and the Patent Number was 1,977,816.

The text of the application read as follows:

"This invention relates broadly to decorative articles for homes and more particularly to a combination flower vase holder and candlestick having candelabra characteristics.

The primary object of the invention is to provide a decorative article of the character mentioned which not only possesses a large degree of ornamentality, but additionally, has certain utilitarian properties in that the device is readily adapted, by reason of interchangeable features, to be easily converted into several and varied uses, each resulting in differing esthetic and optical effects.

Another object of the invention is to provide an article of the character mentioned which can be readily and conveniently used in association with the ordinary form of candlestick.

Further objects will be made apparent during the course of the following description, during which reference is made to the accompanying drawings, in which ---

Figure 1 is a side elevation of my invention associated with and supported by an ordinary candlestick;

Figure 2 is a top plan view of the same with the centrally located tulip-shaped candle holder removed;

Figure 3 is an end view of my invention detached and removed from the candlestick, an ornamental globe being substituted for the central candle holder shown in Fig. 1;

Figure 4 is a side view of the invention and the well portion of a candlestick illustrating one adaptation of the invention, portions of said view being depicted in fragmentary section; and ---

Figure 5 is a perspective view of a modified form of the invention.

Referring to said drawings, the reference numeral 1 designates the base of an ordinary candlestick the same having a vertical stem 2

upon the upper end of which is integrally formed the usual well 3.

Received within the well 3 is a male member 4, of such size and contour that it fits snugly within said well, although, if preferred an appropriate gasket 5 may be used to provide the desired tightness of a friction closure. The upper portion of said male member 4 is surmounted by a pair of superimposed circular beads 6, each of which has a rounded periphery, and the upper of which beads is of less diameter than the lower bead and has a flat top from which extend outwardly at diametrically opposite points horizontally disposed arms or branches 7 having an artistic compound curvature, each arm terminating at its outermost end in the formation of a ring 8. As shown in Fig. 1 of the drawings, each of said rings is adapted to removably receive and support a flower vase 9, perfume bottle, or any similar article having upwardly and outwardly inclined sides or having a flared upper end.

A small circular depression or recess 10 is provided in vertical axial alignment with the well 3 at the inner junction of the arms 7, this recess being adapted to frictionally encompass a stud or pin 11 formed on the lower end of an ornamental candle holder 12, as shown in Fig. 1. Other ornamental figures, symbols, designs or shapes may, however, be substituted for the candle holder 12, as, for instance, the globe 13 shown in Figs. 3 and 4 of the drawings.

As shown in Figure 4 of the drawings, removable ornamental candle holders 12a, substantially similar to the centrally located candle holder 12, may be received in and supported by the rings 8 to form an artistic and graceful candelabra effect.

The structure depicted in Figure 5 of the drawings reveals a modified form of the invention wherein four equally spaced arms branch out radially from the central portion of the device, two of the diametrically opposite arms at their outer termination having permanently attracted thereto upwardly extending candle holders 14, while the other two arms terminate at their outer ends in the formation of the supporting rings 8a.

Manifestly, from the above description it will be observed that varied combinations may be conveniently obtained by the mere inter-

continued on page 15

Oct. 23, 1934

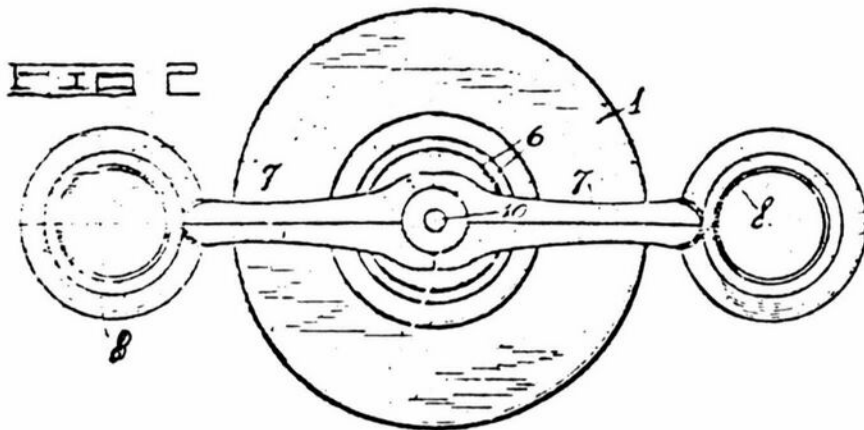
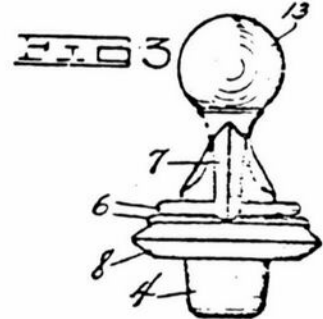
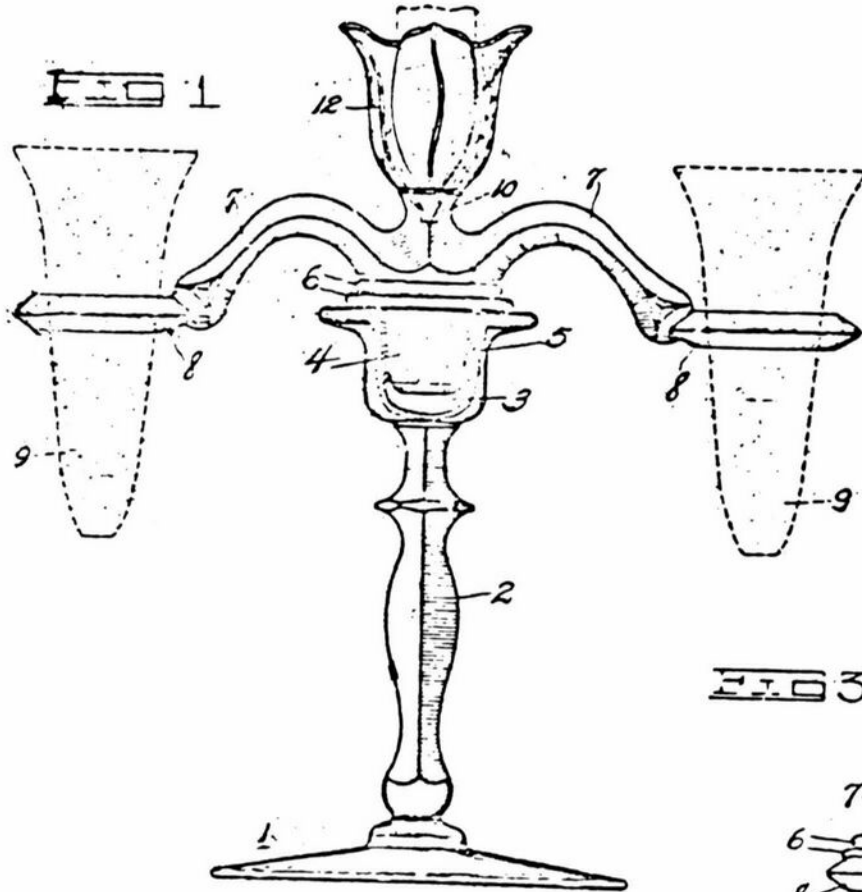
1,977,816

A. J. BENNETT

COMBINED FLOWER VASE HOLDER AND CANDLESTICK

Filed Dec. 22, 1933

2 Sheets - Sheet 1



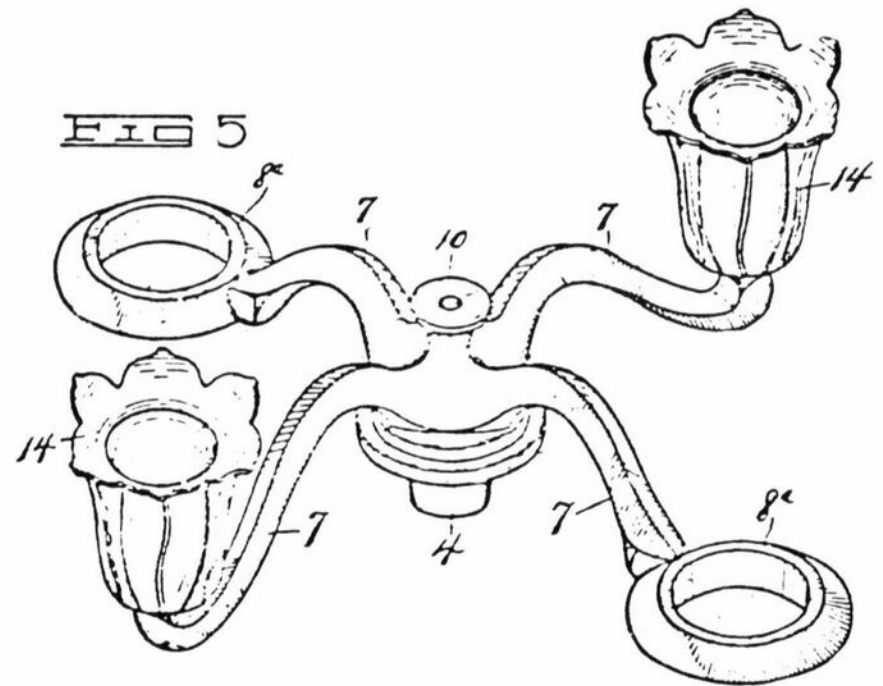
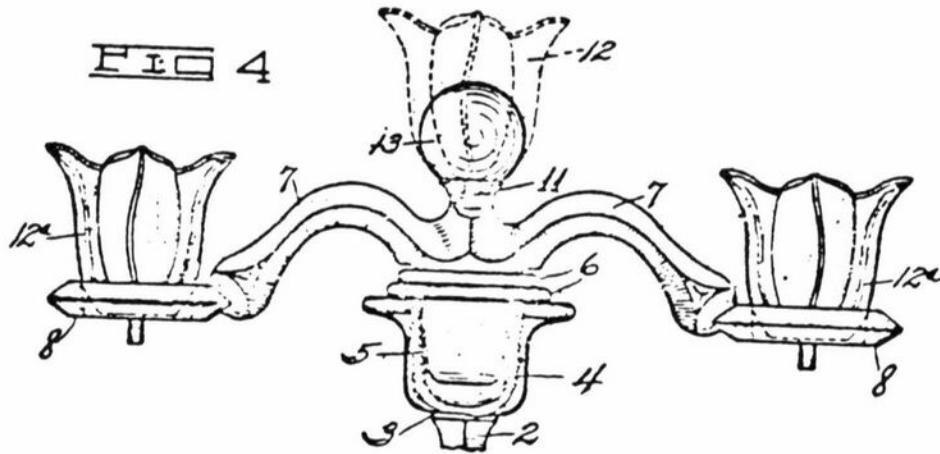
INVENTOR  
*Arthur J. Bennett*  
BY *M. F. Mauion*  
ATTORNEY

A. J. BENNETT

COMBINED FLOWER VASE HOLDER AND CANDLESTICK

Filed Dec. 22, 1933

2 Sheets - Sheet 2



INVENTOR  
*Arthur J. Bennett*  
BY *M. F. Mauion*  
ATTORNEY



# Pressed Goblets, Flat Foot.

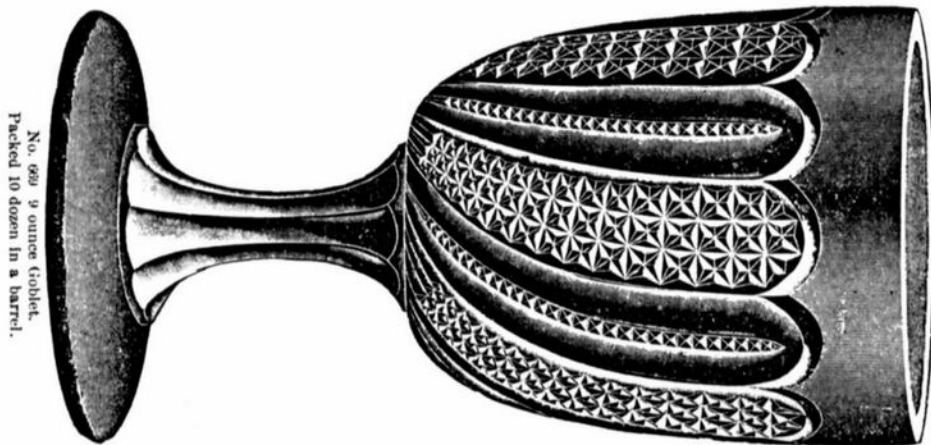
SCALE, FULL SIZE.



No. 666 9 ounce Goblet.  
Packed 10 dozen in a barrel.



No. 725 Goblet, 8 ounce.  
Packed 10 dozen in a barrel.



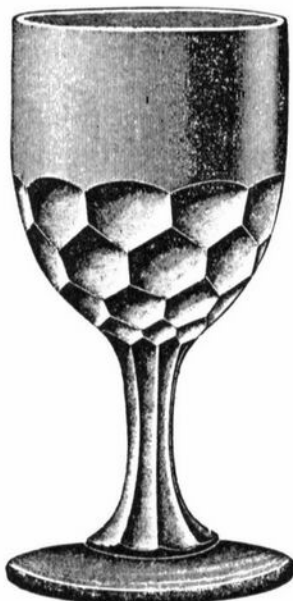
No. 689 9 ounce Goblet.  
Packed 10 dozen in a barrel.

# Pressed Stemware, Flat Foot.

SCALE, FULL SIZE.



No. 674 1½ ounce New York Cordial.  
Flat Foot.  
Packed 100 dozen in a barrel.



No. 674 2 ounce New York Wine.  
Flat Foot.  
Packed 40 dozen in a barrel.



No. 674 8 ounce Large New York Goblet.  
Flat Foot.  
Packed 10 dozen in a barrel.



No. 668 9 ounce Goblet,  
Packed 10 dozen in a barrel.



No. 732 R. R. Goblet Flat Foot.  
Packed 10 dozen in a barrel.

# Pressed Goblets, Cup and Flat Foot. <sup>181</sup>

SCALE, HALF SIZE.



No. 702 Goblet, (Double Foot), Cup Foot.  
Packed 7 dozen in a barrel.



No. 703 11 ounce Goblet, Cup Foot.  
Packed 9 dozen in a barrel.



No. 704 Goblet, (Double Foot), Cup Foot.  
Packed 7 dozen in a barrel.



No. 706 Goblet, Cup Foot.  
Packed 10 dozen in a barrel.



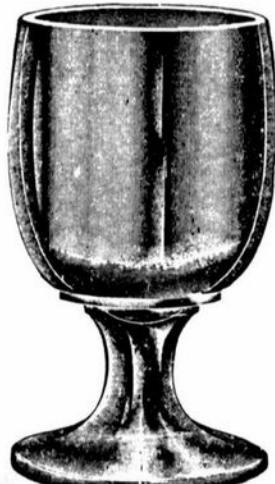
No. 730 Light Goblet, Flat Foot.  
Packed 10 dozen in a barrel.



No. 731 Goblet, Flat Foot.  
Packed 12 dozen in a barrel.



No. 726 Southern Hotel Goblet, Flat Foot.  
Packed 8 dozen in a barrel



No. 727 Heavy Hotel, Flat Foot.  
Packed 8 dozen in a barrel



No. 728 Goblet, Flat Foot.  
Packed 9 dozen in a barrel.



No. 729 Bismarck Goblet, Flat Foot.  
Packed 8 dozen in a barrel.

# Egg Glasses.



No. 755 Egg Glass.  
Packed 15 dozen in a barrel.  
Cut, Half Size.



No. 757 Double Egg Glass.  
Packed 12 dozen in a barrel.  
Cut, Half Size.



No. 756 Egg Cup.  
Packed 12½ dozen in a barrel.  
Cut, Half Size.



No. 752 Egg Glass.  
Packed 14 dozen in a barrel.  
Cut, Full Size.



No. 754 Egg Glass.  
Packed 14 dozen in a barrel.  
Cut, Full Size.



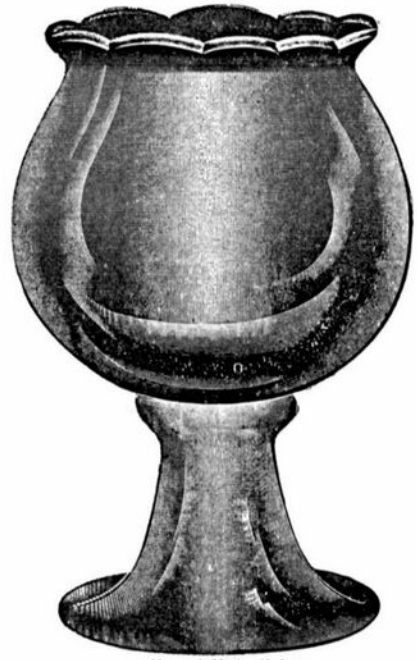
No. 753 Egg Glass.  
Packed 14 dozen in a barrel.  
Cut, Full Size.

# Fish Globes and Aquaria.

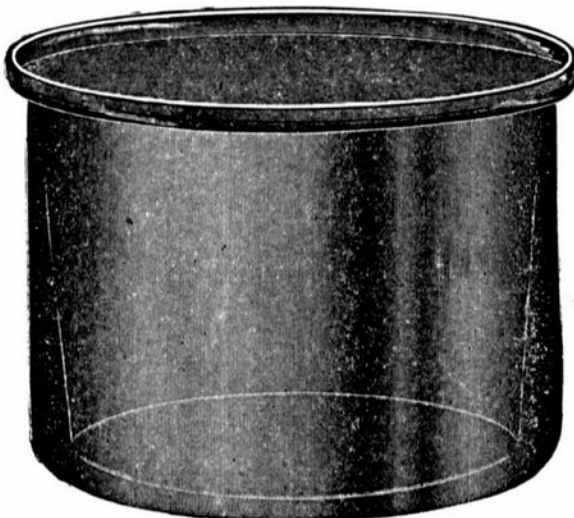
183



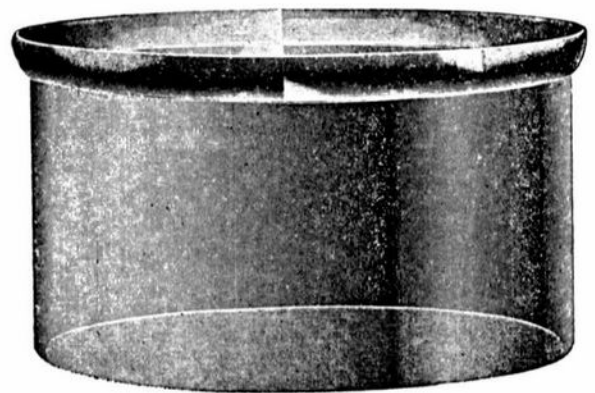
Hanging Fish Globe.  
Plain or Crimped Tops.  
Made in various sizes.



Footed Fish Globe.  
Plain or Crimped Tops.  
Made in various sizes.



Tall Aquaria.  
Made in various sizes.



Low Aquaria.  
Made in various sizes.

# Grocers and Butchers Display Jars.

Made of Clear, Hand Made Crystal Glass, and Fitted with Patent Spring Clasp and Removable Heavy Plate Glass Covers.



Patented in U. S. Feb. 9, 1904.  
Patented in Canada Nov. 23, 1904.

Made in following sizes:

3/4 Gallon Jar and Cover, complete.				
1	"	"	"	"
1 1/4	"	"	"	"
3	"	"	"	"
3 1/4	"	"	"	"
4	"	"	"	"

*File of 220/1,  
#X220/0,*



Patented in U. S.,  
Feb. 9, 1904.  
Patented in Canada,  
Nov. 23, 1904.

Patented in U. S. Feb. 9, 1904.  
Patented in Canada Nov. 23, 1904.



Footed Display Globe and Cover.

# NJ MEMBERS DISPLAY CAMBRIDGE

During the months of August and September, the people who use the Atlantic County Library (which is located in Mays Landing, New Jersey) were treated to an outstanding glass display.

The display was dedicated to the memory of Wilbur L. Orme, Jr., officer in the Cambridge Glass Company. Wib was a grandson of Arthur J. Bennett, owner and president, who made the Cambridge Glass Company the success that it was.



Shown here is a small portion of the lovely Cambridge Glass Display, arranged by Anna and Bud Walker, in the Atlantic County Library, Mays Landing, New Jersey. The glass was displayed during the months of August and September.

Anna and Bud Walker arranged the display in such a way that they were able to display more than 30 of the colors produced by Cambridge, from 1902 to 1954.



A tribute to Wib Orme

The Library has approximately eight displays a year. They have Art, Civil War Memorabilia,

early South Jersey Glass, etc. But, according to the librarian, none have drawn the favorable comments that the Colors of Cambridge display has.

The Library has asked the Walker's to display the glass of Liberty Works, which was located in Egg Harbor City (New Jersey), from 1902 to 1932. Though not as colorful as Cambridge, Liberty made many unique pieces, and some of their early brilliant glass is quite outstanding.

---

## EPERGNES . . . . . continued from page 6

changing of features of the device so as to utilize the same to blend with differing decorative schemes. Furthermore, the use of bobeches and pendant light reflecting prisms at proper locations on the device will lend additional ornamentality of the device when the latter are deemed desirable.

While I have herein described the device as being made to be used in association with a candlestick, it is, of course, obvious that the base, the stem and the horizontal radiating arms may be made in one-piece, as in glass.

What is claimed is ---

In a device of the type set forth, an integral supporting member having a depending central male member formed to be removably received in the well of a candlestick and having a socket formed therein surrounded by an upwardly facing seat located above and in alignment with the male member, article holders integral with the supporting member and having open centers, and ornamental articles for interchangeable use with the socket and the article holders having depending studs each receivable in the socket and having bottom portions engaged with the seat to form an ornamental top for the supporting member and having portions which are receivable through the open centers of the holders and are supported from their peripheries thereby.

ARTHUR JAMES BENNETT

---

## 1906 CATALOG

The previous six pages (9 thru 14) are reprinted here from the 1906 Cambridge Glass Company catalog. We have been reprinting this catalog as space permits, for quite sometime. We will list the issue numbers when we have completed the entire catalog, so you may order any issues you may have missed.

# Aladdin

## ELECTRIC LAMPS, 1930-1956

ALADEX · VELVEX · OPALIQUE · ALACITE  
Deluxe Hardbound - Color - 229 pages  
\$24.95 ppd. - Add \$3 for first class

Order your Book from the Author:  
J.W. COURTER  
R-1 · Simpson, IL 62985

MUSEUM . . . . . continued from page 3

Hopefully this will let you see the various people that we have on this year's committee. If you have any comments about the Museum, please let us know.

I hope to see many of you at the November Quarterly meeting. If you have not yet sent in your reservations, please make sure you do so before the deadline of October 25th. The quicker you send in your reservations, the more time Cindy Arent and her committee will have to make all preparations. The program on Etchings, by the Miami Valley Study Group sounds like it will be very informative.

Until next month, take care, and keep collecting Cambridge.

---

---

## Study Club News

---

---

STUDY GROUP #7 - EASTERN OHIO  
"THE CAMBRIDGE BUFFS"  
Phone: 614/432-5230

The Cambridge Buffs Study Group held their meeting August 10th, in the home of Jim and Shirley Douglas. There were nine members present.

Charles Upton reported on the N.C.C. Convention, and read a letter from J.D. Hanes thanking the group for the support to the Museum and the donation of glassware. Several Nearcut price guides were sold.

"Show & Tell" items included: Georgian tumblers by Cambridge, Fenton and Westmoreland; Today stem cordial with Tomorrow

etching; #3134 stem cordial; Chelsea jade bowl, signed; #756 9½" flower bowl; ebony vase w/Rosepoint etching; amber Jenny Lind bowl; green and blue willow plates; and a pink vase by Harold Bennett signed 1970.

A buffet supper was served by our hostess. Next meeting will be at the home of Charles and Mary Alice Upton.

submitted by Deanne Gray

## Trivia Quiz

1. Name the only father - son presidential pair in the history of the United States.
2. What was Granny's full name on the TV series 'The Beverly Hillbillies'?
3. Name the New York Yankee pitcher who on October 8, 1956, pitched the only perfect game in World Series history.
4. What is the common name for Light Amplification by Stimulated Emission of Radiation?
5. What portion of an iceberg is above the water?
6. What is the score of a forfeited football game?
7. How many years is a Patent good for under United States Law?
8. How many pints of blood are in the average human body?
9. What do you call a person who collects coins or medals?

ANSWERS: 1. John Adams & John Quincy Adams, 2. Daisy Moses, 3. Don Larsen, 4. Laser, 5. 1/9, 6. 1-0, 7. 17 years, 8. 12 pints, 9. Numismatist.

## QUARTERLY MEETING

Be sure to send in your reservations, for the November Quarterly Meeting, before the deadline of **October 25th**. (See form on page 20.)

It is not necessary to tear up your C.B. Just put the required information on a plain sheet of paper and send it (along with your check to cover your dinner) to:

National Cambridge Collectors, Inc.  
P.O. Box 416, Cambridge, OH 43725

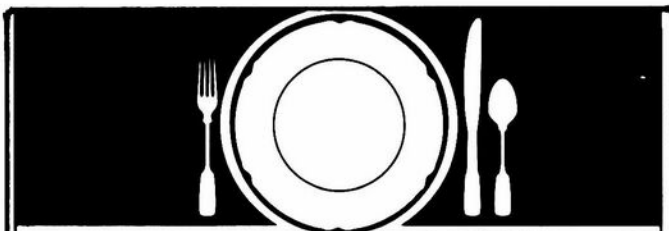


**— Classified —**

**FOR SALE:** "Starburst" collection. 107 pieces including cocktail shaker with silver-plate mounting, 1 oz. cordials, goblets, sherbets, etc., etc. Send S.A.S.E. for list or with your requirements, or telephone (508) 839-4882. **Tee-Hillman Antiques**, 30 Millbury Street, Grafton, MA 01519.

**WANTED:** Nearcut #2660 punch bowl base only! Also 6 punch cups, flat custard, or 12 footed ones. **Berniece Lemaster**, 3212 W. Cabot Dr. #1, Anaheim, CA 92804. Phone: (714) 827-2125.

**FOR SALE:** CRYSTAL BALL Binders. Clear vinyl, top quality, 1½", 3-ring loose leaf. Each holds approximately 20-24 issues. Available at N.C.C. Museum for \$6.00; or by mail \$7.00 (includes \$1 shipping). Ohio residents add 36¢ sales tax. Send orders to: N.C.C., Inc., P.O. Box 416, Cambridge, Ohio 43725.



**How to Find Those Missing Pieces.**

The world's largest source of discontinued and obsolete crystal -- as well as china and flatware -- Replacements, Ltd., buys and sells over 36,000 different patterns.

If you need a piece or several pieces to add to your collection ... or if you'd like to sell some unneeded extras ... call or write us. We can provide you with a complete printout of available pieces in your pattern. Or we'll let you know our prices for the pieces you wish to sell.

Replacements, Ltd.: a 100,000 square foot facility; 1.4 million pieces; over 600,000 satisfied customers. Contact us, or come see our showroom. Let us help you complete your collection ... or maybe you'll help add to ours.

**REPLACEMENTS, LTD.**

Call (919) 697-3000, FAX (919) 697-3100, or write:  
1089 Knox Road • P. O. Box 26029, Dept. C • Greensboro, NC 27420

**OVER 6800 CAMBRIDGE PIECES**



**FOURTH ANNUAL  
NORTH TEXAS  
ELEGANT GLASS  
SHOW & SALE**

OCTOBER 12 & 13, 1991



**GRAPEVINE CONVENTION CENTER  
1209 SOUTH MAIN STREET  
GRAPEVINE, TEXAS 76051**

HOSTED BY	SATURDAY, OCT. 12
FOSTORIA GLASS SOCIETY	10 AM - 6 PM
OF NORTH TEXAS	SUNDAY, OCT. 13
TO BENEFIT THE NATIONAL	11 AM - 5 PM
FOSTORIA GLASS MUSEUM	ADMISSION - \$2.50
MOUNDSVILLE WV 26041	DONATION

**NATIONALLY KNOWN AS WELL AS LOCAL DEALERS WILL DISPLAY A WIDE SELECTION OF ELEGANT GLASS.**

**BOOKS AND OTHER INFORMATION WILL BE AVAILABLE.**

**DEALERS DESIRING BOOTH SPACE CONTACT OR WRITE:**

<b>JOHN FREEMAN</b>	<b>KENNETH DEIBEL</b>
1018 GLEN HAVEN CT.	3715 CLOVER LANE
IRVING, TX 75061	DALLAS, TX 75220
(214) 438-8074 OR	(214) 352-9914
(214) 742-5481	

**L. A. MANESS**

RT. 1, BOX 552, ASHLAND, VA 23005  
(804) 798-1825

C = MARKED                      P & I \$3.50 CTN

- #138 light emerald cream & sugar w/#520 etch, set, C.....\$ 50
- #663 crystal 3-lite, 2 vase epergne.....\$ 110
- SS#33 crown tuscan 4" ashtray (2) each.....\$ 25
- SS#35 crown tuscan covered cigarette box.....\$ 70
- #1506 blue novelty basket 5", C.\$ 45

**APPLE BLOSSOM**

- #3130 3 oz. cocktail (4) each...\$ 20
- #3130 high ftd. sherbet (4) ea..\$ 17
- #3400 6" plate (7) each.....\$ 10
- #3400 8½" plate (4) each.....\$ 15
- #3400 blue 7½" plate (4) ea., C.\$ 20

**VISA/MASTERCARD WELCOME**

The **DAZE** Inc.

**\*SPECIAL OFFER**  
to NCC friends \$2. off  
the 1 year subscription  
price when on this form  
or copy of.

The Original National monthly newspaper dedicated to the buying, selling & collecting of colored glassware and china including Depression Glass and the Elegant Glass (Cambridge, Heisey, Fostoria, etc.) We educate and inform you each month with feature articles by top notch columnists, readers "finds", club happenings, show news and a multitude of ads. Find those missing pieces to your 30s, 40s or 50s pattern. Can't identify it? Perhaps we can help "Keep up with what's happening with a subscription to the DAZE. Buy, sell or trade from the convenience of your easy chair.

Name \_\_\_\_\_ Street \_\_\_\_\_

City \_\_\_\_\_ State \_\_\_\_\_ Zip \_\_\_\_\_

1 yr \$19    2 yrs \$37    \$2. Single Current Copy

Exp date \_\_\_\_\_ Card No. \_\_\_\_\_

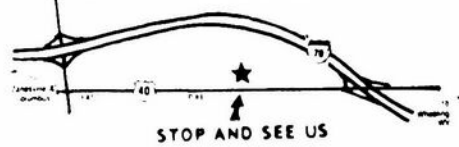
Signature \_\_\_\_\_

Orders to D.G.D., Box 57NC, Otisville, MI 48463

Please allow 30 days for your first issue - Canadian subscribers, add \$1. per year and subscribe by charge card only! This Special Offer may not be combined with any other special offer.

*Stage Coach*  
**Antique Mall**

WELCOME TO GLASS COUNTRY!



RT. 40 ONE-HALF MILE WEST OF I-70 EXIT #164  
MANY DEALERS - WIDE SELECTION - PLENTY PARKING

WE FEATURE GLASSWARE OF:  
CAMBRIDGE, HEISEY, FENTON, & FOSTORIA  
Plus Art Pottery & a General line of Antiques

**DORIS AND ROY ISAACS**  
**BUY AND SELL**  
614-872-3720



7525 EAST PIKE  
NORWICH, OHIO 43767

MON THRU SAT 10-5:30 SUN 12-5:30  
SUMMER EVENING HOURS BY CHANCE

**COLUMBUS ANTIQUE  
FLEA MARKET**

(ANTIQUES AND COLLECTIBLES)

**OCTOBER 6th**

Ohio State Fairgrounds—Lausche Building—Off I-71 Exit 17th Ave.

SUNDAY ONLY—7:00 AM TO 4:00 PM

**1991 SCHEDULE 1991**

**10TH  
YEAR**

NOV. 10th • DEC. 8th

**10TH  
YEAR**

*150 Quality Dealers*

Show admission \$1.50 • Children under 12 free

Heated/Air Conditioned • Concession



*"The Friendly  
Family Business"*

4214 North High Street, Columbus, Ohio 43214  
(614) 267-8163 (614) 263-6830 (614) 885-2352

# DEALERS



# DIRECTORY

NOTE: When writing to the Dealers listed here, please enclose a SASE!

<p><b>SANDY'S ANTIQUE MALL</b> 617 Wheeling Ave. Cambridge, OH 43725 Phone 614/432-2570</p> <p><b>COLLECTOR'S ITEMS</b> Summer 9 - 6 Daily * Winter 9 - 4:30 Mon - Sat</p>	<p><b>BENICIA ANTIQUE SHOP</b> 305 First Street Benicia, California 94510</p> <p><b>OPEN 11 AM - 5 PM</b> Closed Monday</p> <p>Z. E. LOPES 707-745-0978</p>	<p><b>THE MUTED SWAN ANTIQUES</b> 5486 Peachtree Rd. Chamblee, GA 30341 Heart of Chamblee Antique Row</p> <p>Specializing in Cambridge, Heisey and Fostoria Bill &amp; Pat Miller 404-451-7620</p>
<p><b>MILBRA'S MATCHING SERVICE</b> P.O. Box 363, Rio Vista, TX 76093 Milbra Long 817 / 645-6066</p> <p>FOSTORIA * CAMBRIDGE * HEISEY * DEPRESSION ERA GLASSWARE BUY and SELL</p>	<p><b>VISIT HISTORIC BENICIA</b> and its 28 shops</p> <p>Off Interstate #80 ..... ..... North of San Francisco</p>	<p>Elegant Depression Era Glassware</p> <p><b>ABBA ANTIQUES</b> 1157 Charlie Lane Lilburn, GA 30247 Bill &amp; Barbara Adt (404) 279-1942 Shows, Mail Order, &amp; by Appointment</p>
<p><b>THE GLASS URN</b> 456 West Main Street, Suite G. Mesa, AZ 85201 602 / 833-2702</p> <p>Mail Order Shows Open Shop CAMBRIDGE, FOSTORIA, HEISEY, ETC.</p>	<p><b>ANTIQUES ON THE MALL</b> SPECIALIZING IN CAMBRIDGE GLASS</p> <p>Stagecoach Mall - Bldg. 3 - Norwich, OH Virginia Bennett 614/432-4483 64183 Warne Drive, Cambridge, OH 43725</p>	<p><b>GATEWAY ANTIQUE MALL</b> 21122 - 134th Avenue North Rogers, MN 55374 I-94 &amp; 101 (Exit #207, Turn North)</p> <p>Open 10-6, 7 Days - (612) 428-8286</p> <p>Elaine Stock, Proprietor Diane Overson, Manager</p>
<p><b>ETTELMAN'S DISCONTINUED</b> CHINA &amp; CRYSTAL Cambridge a Specialty</p> <p>P.O. Box 6491-CB Corpus Christi, TX 78466 Phone (512) 888-8391 Include S.A.S.E.</p>	<p><b>D &amp; D ANTIQUES</b> Columbus, Ohio</p> <p>DICK SLIFKO SHOWS ONLY</p>	<p><b>DEER TRAIL ANTIQUES</b> RONI SIONAKIDES (517) 669-5981</p> <p>6565 W. Herbison Rd. DeWitt, MI 48820 Fostoria, Tiffin, Duncan, Cambridge</p>
<p><b>THE GLASS CUPBOARD</b> 39 Shire Oaks Drive Pittsford, New York 14534</p> <p>Marcia Ellis Cambridge, Duncan Miller (716) 586-7596 Shows, Mail Order, Appt.</p>	<p><b>JUDY'S ANTIQUES</b> Judy Bennett 422 S. Ninth Street (Corner of Jefferson) Cambridge, Ohio 43725</p> <p>BUYING Ph. 614-432-5855 SELLING Cambridge Glass my Specialty</p>	<p><b>"HAPPINESS IS"</b> Buddy and Kathy Stultz 3106 Warren Court, Glen Allen, VA 23060 804/672-8102</p> <p>Write or Call Us ----- We Do Ship</p>
<p><b>ELEGANT GLASSWARE</b> Barbara Brock 26 Fayette St. Martinsville, VA 24112 (804) 724-6762</p> <p>Cambridge-Heisey-Duncan-Fostoria</p>	<p><b>GREEN ACRES FARM</b> 2678 Hazelton Etna Rd., Pataskala, OH 43062 (State Route 310 North)</p> <p>Sat. &amp; Sun. 1-7 PM 614/927-1882 Antiques, Crystal Glass and Collectibles</p>	<p><b>CROW'S NEST ANTIQUES</b> Constance Crow Buying &amp; Selling Elegant Depression Era Glassware</p> <p>Austin Antique Mall 8822 McCann Austin, TX 78758 (512) 371-0244</p>
<p><b>THE HITCHING POST</b> 7467 S. R. 88 Ravenna, OH 44266</p> <p>Ph. 216-296-3686 D. McDaniel CAMBRIDGE — HEISEY — GENERAL LINE</p>	<p><b>PATCHES OF VIRGINIA</b> Specializing in China and Glass Virginia T. Houston</p> <p>34116 Roberts Rd., Eastlake, OH 44095 Phone: (216) 975-8315</p>	<p><b>CRYSTAL LADY</b> 1817 Vinton St., Omaha, NE 68108 Joann D. Hagerty Bus. (402) 341-0643 Res. (402) 391-6730</p> <p>Specializing in Elegant Glass &amp; Collectables</p>
<p><i>YOU CAN ADVERTISE YOUR ANTIQUe SHOP HERE!</i></p>	<p><b>REMEMBRANCES</b> 7597 Daphne Dr., No. Syracuse, NY 13212 Shirley S. Ladouceur 315 / 458-5297</p> <p>ANTIQUES and COLLECTIBLES MAIL ORDER SHOWS APPOINTMENTS</p>	<p><b>MARGARET LANE ANTIQUES</b> 2 E. Main St., New Concord, OH 43762 Lynn Welker 614/826-4418</p> <p><b>CAMBRIDGE GLASS MATCHING SERVICE</b> Hours Mon.-Fri. 1-5 PM or by Appointment</p>
<p><b>GLASS RESTORATION</b></p> <p>BRILLIANT CRYSTAL ELEGANT DEPRESSION</p> <p>DON &amp; LYNNE WORMLAND MT. CLEMENS, MICH 313/468-3519</p>	<p><b>WATKINS</b> (Fine Quality) <b>CAMBRIDGE GLASS SHOP</b> 1429 Marquand Ave. (Corner of Woodlawn) Cambridge, OH (614) 432-4460 Lana Watkins</p>	<p><b>HELEN &amp; JIM KENNON</b> Heisey, Cambridge, Fostoria, Duncan, Imperial, Fenton, Tiffin P.O. Box 114 Brookville, OH 45309 PH: (513) 833-5406 SHOWS ONLY</p>

# Quarterly Meeting

NOVEMBER 2, 1991

HOLIDAY INN

State Route 209S - - Cambridge, OH

SOCIAL HOUR - Pay Bar.....6:00 PM

DINNER (sit down).....7:00 PM

BUSINESS MEETING.....8:00 PM

PROGRAM (to follow meeting)  
Speaker: Miami Valley Club  
Topic: "Etchings"

DINNER \$11.50 ea. Choice of the following:  
Please indicate your choice(s)

Breast of Chicken w/rice..... How Many \_\_\_\_\_

Ground Sirloin Steak..... \_\_\_\_\_

NAME(s): \_\_\_\_\_ Total Reservations \_\_\_\_\_

Return this form with your check to: N.C.C., Inc., P.O. Box 416, Cambridge, OH 43725.  
Reservations must be received by October 25th.

## HALLOWEEN

by Paul E. White

Halloween in antiquity  
Was the day all saints parade.  
But not all paraders in modern days  
Are saints. No comparison made.  
Trick-or-treaters walk the streets  
Filling bags with edible loot,  
Occasionally saying "Thank You."  
And planning a trick, to boot.  
Perhaps a lawn chair on the roof  
A gate taken off the fence  
Overturning a Chic Sale bungalow -  
- someone inside? That's immense!  
Gone the simple day of a tic-tac  
Rattling the window pane;  
A streak of soap, or corn to throw.  
Some 'kids' grow up in vain.  
But give me a masquerade party  
All characters having fun  
And unmasking a lovely lady  
Who turns out to be "Number One."

**OCTOBER 1991**

### NCC Museum of Cambridge Glass

The museum is located on U.S. Route 40, one-eighth mile east of I-77 near Cambridge. Hours: 10 a.m. to 4 p.m., Wednesday through Saturday; noon to 4 p.m., Sunday (March through October). Phone 614/432-4245.  
Closed Mondays, Tuesdays, Easter and the Fourth of July.

National Cambridge Collectors, Inc.  
P. O. Box 416, Cambridge, Ohio 43725

**FIRST CLASS MAIL**

FIRST-CLASS MAIL  
U.S. POSTAGE  
**PAID**  
So. Vienna, Ohio  
45369  
Permit No. 15

### Membership Renewal Notice

This is your **last** issue of the *Crystal Ball*—if the date on your address label reads 10-91.

*Please renew now!*