



# Cambridge Crystal Ball

Published monthly by the National Cambridge Collectors, Inc.  
to encourage and report the discovery of the elegant and boundless product  
of the Cambridge Glass Company of Cambridge, Ohio

Issue No. 208

August 1990

## Cambridge Glass collectors from far and wide convene

by LORRAINE WEINMAN

OLD WASHINGTON, OHIO -- Collectors of Cambridge Glass from all over the country met this weekend at the Shenandoah Inn for the 17th annual National Cambridge Collectors, Inc. Convention.

The chairman's reception Thursday evening opened this exciting weekend which included speakers, slide programs, glass identification, prizes, a glass show and sale, a mini-auction, and a flea market.

James W. Bryan, President of Bryan Crystal, Inc., Sharon, Pa., at the Saturday banquet presented comparisons between yesterday and today in America's elegant glassware.

Bryan believes that quality is important as well as price. His company is diversified and does a lot of private label work for companies like Lenox and department stores. He says their glass has the highest lead content in the U.S.A. and is hand polished.

Bryan Crystal uses old as well as revolutionary techniques in its glass production. Instead of gas furnaces, electric furnaces are in use. Yet, some of his equipment, made at the turn of the century, are from the old Tiffin and Fostoria plants.



**Banquet speaker James W. Bryan, shown here with his wife Teresa Bryan.**

Using slides, Bryan described the processes used to make his quality glass. In a first time public announcement, he said that he has purchased the first laser jets to make glass. Using robotics, this machine takes tap water and makes it into a stream of 60,000 pounds of water pressure which then mixes with garnets; this can cut glass at a rate of 600 inches per minute. Once there is a computer graphic, it can do any size with a press of a button or two.

continued on page 4

# Cambridge Crystal Ball

Official publication of National Cambridge Collectors, Inc., a non-profit corporation with tax exempt status. Published once a month for the benefit of its members.

Membership is available for individual members at \$15 per year and additional members (12 years of age and residing in household) at \$3 each. All members have voting rights, but only one *Crystal Ball* will be mailed per household.

Back issues of the *Crystal Ball* are available (beginning with Issue No. 1, May 1973) for members only. Cost: \$1.00 each or 12 issues for \$10.00.

## 1989-90 Officers & Committee Chairpersons

President	Mark A. Nye
Vice-President	Cynthia A. Arent
Secretary	J.D. Hanes
Treasurer	William C. Smith
Sergeant-at-Arms	Marlene K. Snyder
Acquisition	Mark Nye, Lynn Welker, Bill Smith, Joy McFadden, J.D. Hanes
Budget & Finance	David B. Rankin
By-Laws	J.D. Hanes
Membership	Phyllis D. Smith
Museum—Facilities	Willard P. Kolb, Doyle Hanes
Museum—Interior	Lynn Welker, Janice Hughes, Marybelle Moorehead
Non-Glass Items	J.D. Hanes, Cindy Arent, Judy Momirov, Marlene Snyder
Nominating	Willard P. Kolb
Program	R. Clarke West
Project	William C. Smith
Public Relations	Bill & Phyllis Smith
Publicity	Cynthia A. Arent
Study Group Advisor	Phyllis D. Smith
1990 Auction	Lynn M. Welker
1990 Antique Show	Joy R. McFadden, Mary Beth Hackett
1990 Convention	Marybelle Moorehead
1990 Flea Market	Doyle C. Hanes
Crystal Ball Editor	Phyllis D. Smith

## Classified Advertising Rates

10 cents per word \$2.00 minimum  
We cannot mix type size in classified advertisements. Abbreviations and initials will count as words. Payment in full must accompany all ads.

## Display Advertising Rates

(Camera-ready ads preferred)	Members	Non-Members
1/8 page	\$ 6.00	\$10.00
1/4 page	10.00	15.00
1/2 page	18.00	25.00
3/4 page	25.00	35.00
Full page	33.00	45.00

## Dealers Directory

Five-line maximum \$18.00 for 12 months

Cambridge *Crystal Ball* assumes no responsibility for items advertised and will not be responsible for errors in price, description or other information.

*Advertising copy, articles, club news and notices must be in our hands by the 10th of each month to assure publication in our next issue.*

Paid advertisements containing reproductions or new glass will not knowingly be accepted for publication.

Opinions or information stated in any signed article or letter printed in the *Crystal Ball* are those of the authors and may or may not agree with National Cambridge Collectors, Inc. The Editor reserves the right to refuse and to edit any material submitted for publication so as to conform with the editorial style of the *Crystal Ball*.

### Please Address All Correspondence to:

National Cambridge Collectors, Inc.  
P.O. Box 416 Cambridge, Ohio 43725  
**President** — Mark A. Nye, 305/221-0343  
**Secretary** — J.D. Hanes, 614/432-6794  
**Editor** — Phyllis Smith, 513/323-3888

Please notify us immediately of any change in your address.

Please enclose an SASE when requesting information.

# CAMBRIDGE GLASS BOOKS FOR SALE

by National Cambridge Collectors, Inc.

\* **COLORS IN CAMBRIDGE GLASS**  
(128 pages - 60 color plates - fully indexed)  
Hardbound with Price Guide \$19.95

\* **1930-34 CAMBRIDGE GLASS CO. CATALOG REPRINT**  
(250 pages *Out of Print* catalog)  
Hardbound with Price Guide \$14.95

\* **1956-58 CAMBRIDGE GLASS CO. CATALOG REPRINT**  
(164 page reprint of original catalog)  
Paperback \$6.95

**1985 COMBINED PRICE GUIDE**  
for 1930-34 & 1949-53 catalog reprints Postpaid \$5.75

\*NCC MEMBERS ONLY: *These publications are available at 10% discount*

by Bill & Phyllis Smith

**CAMBRIDGE GLASS 1927-1929**  
(66 page reprint of original catalog)  
Paperback with Identification Guide \$7.95

by Cambridge Buffs Study Group

**NEARCUT**  
(108 page reprint of 1910 Cambridge Catalog)  
Paperback with Price Guide \$9.95

by Mary, Lyle and Lynn Welker

**CAMBRIDGE GLASS CO.**  
(120 pages of reprint from 8 old catalogs)  
Paperback \$10.00

**CAMBRIDGE, OHIO GLASS IN COLOR II**  
Spiralbound \$5.95

by Harold and Judy Bennett

**1903 CAMBRIDGE GLASS CO. CATALOG REPRINT**  
(106 page reprint of an original catalog)  
Paperback \$7.50

Address your orders to:

**BOOKS**  
National Cambridge Collectors, Inc.  
P.O. Box 416  
Cambridge, OH 43725

Please add \$1.00 (P & I) per order.  
(Not required for Price Guide)

Ohio residents please add 6% state sales tax.

**DEALER DISCOUNTS AVAILABLE - PLEASE WRITE!**

## NCC Museum of Cambridge Glass

The Museum is located on U.S.40, one-eighth mile East of I-77 near Cambridge. Hours: 10 am to 4 pm Wednesday thru Saturday. Noon to 4 pm Sunday. March thru October Closed: Monday & Tuesday Easter and July 4th

Phone: 614/432-4245

## FROM THE PRESIDENT'S DESK

Convention and Annual Meeting 1990 are now history and I do believe most, if not all, attendees really had a good time. I do want to take this opportunity to thank Marybelle Moorehead, chairperson for the Convention; Joy McFadden and Mary Beth Hackett, co-chairpersons for the Antique Show & Sale; and Marlene Snyder (assisted by her husband Harold) Flea Market chairperson. Each event ran smoothly and it is because of your efforts this happened. So again, thank you Marlene, Marybelle, Mary Beth and Joy!

Minutes of the annual meeting are printed elsewhere in this issue. I might add the decision not to recommend acquiring the factory site and buildings was a painful one and one not reached lightly. However, after seeing the structural condition of the office building and the realization that stabilization and repairs could not wait and knowing the amount of money it would take to do this once we had acquired the property, I came to the conclusion preservation of the office building was not possible. At this point only a miracle, a donation of money in the six figure range or some similar act will change the destiny of the factory site.

During the convention I told a joke that actually had a morale -- that value is in the eyes of the beholder. In essence the story consisted of the owner of an old bible printed by someone named "Guten or something like that" and marked up by someone named Martin Luther. Being totally convinced the bible was worthless since it was old and marked up, the owner threw it away!

Sometime during the past years, individuals have broken into the old Cambridge factory office building and vandalized the interior, including dumping numerous boxes of records and documents, which to them were worthless.

Where these records had been stored is unknown; however, those nameless vandals did do us a service by discovering them. It would have been better, had the records not been "trashed," but hard, dirty work on the part of myself, Bill Smith and Luene Brandt, resulted in their recovery and acquisition. The Cambridge records were mixed in with papers from later occupants of the office, along with a good deal of broken window glass, rubbish and other debris, but we persevered and got them sorted and boxed up. While there may not be any "earth shattering" revelations in this



Mark Nye, N.C.C. president, is shown here sorting thru the debris -- quite a mess!

material, every piece of paper does give that much more information about operations of the Cambridge Glass Company.

In the coming months, various of these records and documents will be used within this message or as the basis of a full scale article. Look elsewhere in this issue for one such document we found; a guard's report on an armed robbery that took place at the factory.

For some readers, there is still time to plan on attending the Annual Picnic on August 4th, at the service building behind the Museum. The Quarterly meeting will follow at 1 pm.

Until next time, Collect Cambridge!

---

### PICNIC & QUARTERLY MEETING DETAILS!

This is a potluck type picnic, so be sure to bring your favorite dish (hot or cold), dessert, salad, etc. Also, be sure to bring your own table service and chairs. Tables and cold drink will be furnished. Lunch will be at 12 noon.

If you so desire, you may bring a table and set up at what we loosely refer to as a "flea market." We've had only one member take advantage of this during the past few years, but others are certainly encouraged to do so. This will be held from 10 am to 12 noon. Try it, you will undoubtedly have fun, and make a few bucks in the bargain. There is no charge for this, but it is for MEMBERS ONLY.

The August Quarterly meeting will be held after lunch, at approximately 1 pm. This meeting is usually fairly short, and then we all stay for awhile and visit. There is also plenty of time to visit the Museum, as it will be open until 4 pm. We hope to see you there!

---



In closing, Bryan said the enemy of the glass industry is that "today's consumers don't know what elegant glassware is." He stressed that we "have got to spread the word." Today's youth needs to be educated in the appreciation of elegant glassware.



**Saturday breakfast speaker Lynn Welker tells Cambridge collectors all about "Cambridge Cordials." Shown at left are Clarke and Carole West.**

Lynn Welker was the Saturday breakfast speaker, informing his audience and showing examples of Cambridge Cordials. Cordials are generally 1 oz. in size and Welker said "It's a collection that can go on and on." He has counted over 800 different Cambridge Cordials. Almost all the stemlines had cordials and there were a lot of colors. Holding up a selection of cordials, Welker outlined the changes in height throughout the decades of production.

Explaining why they are so hard to find, he said that during the depression people were "economically minded." Wanting something showy, they bought the larger pieces because the price was the same for the cordials as the larger pieces. In addition, many collectors like them because they are "small and don't take a lot of space."

At the Saturday evening dinner, in keeping with the theme, "Tickled Pink with Cambridge Cordials," the tables were set with pink Cambridge glass bowls and candlesticks. Flowers were arranged in the glassware by the Eureka Garden Club.

Convention souvenirs were pink Mt. Vernon cordials, reproduced by Mosser Glass. Oval Cambridge advertising awards were presented to 28 members for their donations to N.C.C.



**"Show & Tell"**

Earlier in the day, a standing-room-only crowd attended the extremely popular "Show & Tell" program led by Lynn Welker. An expert on glass identification, Welker commented on the beautiful glass which filled two large tables. Pointing out each piece, he identified the company that produced the glass and some of the glass' history.

Sunday's breakfast was followed by the annual meeting with Mark Nye, N.C.C. president presiding. Reports were made by Phyllis Smith, Willard Kolb, Janice Hughes, J.D. Hanes, Cindy Arent, Bill Smith, Lynn Welker, Dave Rankin, Joy McFadden, and convention chairman Marybelle Moorehead.

Donations of Cambridge Glass, money, and a TV/VCR were presented to N.C.C. by several of the Cambridge study groups.

Phyllis Smith remarked that there is a "slow but steady growth" in membership. Members now number 1,334; up from last year's 1,313. A tribute was made to our deceased members.

Starting September 1, consignment lists of glass for the February auction should be sent to Lynn Welker.

A new price update on the Cambridge Colors book should be available soon. Within the year, the club plans the printing of a book on Caprice and one on Cambridge Stems. Also expected to be reprinted soon are softbound editions of the 1930-34 and 1949-53 catalogs.

It was reported the Museum will gladly accept glass donations; particularly in Rosepoint and colors of tahoe blue, late pink, amber and emerald green; mandarin gold and pistachio.

The N.C.C. Quarterly meeting and picnic will be held August 4th at the Museum. Next Quarterly meeting will be November 3rd.

# Former glasshouse gang reunited

by LORRAINE WEINMAN

CAMBRIDGE, OHIO -- "I remember what I made without even looking. It costs more than that to fill your car with gas now," Edna Nicholson commented as other former glasshouse workers searched for their wages and helped friends and co-workers find theirs in one of the payroll books kept at the National Cambridge Collectors, Inc. Museum of Cambridge Glass.

The annual reunion of former Cambridge Glass Company workers is held in conjunction with the N.C.C. Convention. This Sunday's reunion marked the seventh year for this event.

Only three former workers have been present for all seven reunions. They are: Bill Smith of Springfield who has arranged the reunion; Mary Martha Mitchell who served as secretary to A. J. Bennett, president of the Cambridge Glass Co.; and Alice Howell of Cambridge.

Myrl Hill registered the 41 former workers and approximately 100 relatives, friends and visitors, for the event. This was the first reunion for eight of these workers. Roger and Marge Seaton served refreshments.

Those in attendance spent several hours looking over the shelves of glassware they may have helped make and visiting with friends and co-workers. Different pieces of glass brought back memories and stories that were shared.

In a corner a videotape of former workers, who have been taped to help preserve the history of the glasshouse, was playing.



Cindy Arent, standing, visits with several former workers during the Reunion.

Mary Burik, Bea Stillion, and Fern and Mike Lengen took a few moments to watch themselves on television. Taped interviews are still in progress and will soon be available for viewing at the N.C.C. Museum.



Debbie (Wilson) Lauer and her husband Randy (not shown) from Des Moines, Iowa, were first-time convention attendees.

Debbie's great-grandfather John O. Wilson, grandmother Margaret Kidd, grandfather Ralph Wilson and great-aunt Roberta Geese were all former factory workers.

Velva Vandenberg donated a 1924 photo in which she is pictured inside the plant. Dan Slay donated a 1952 picture of the mold shop crew and mold cleaning tools. Richard Anderson donated a lead pencil dog from a mold repair pouring. The metal nameplate from the office door of A. J. Bennett, company president, was donated by Charles Upton, first president of N.C.C., Inc. These items will soon be on display.

On one of the glass cases was an early aerial photo of the glasshouse which was being shared at the reunion by Mark Anderson.

This reunion was an event enjoyed by all. Bill Smith said that it will be scheduled again next year. Plan to return for the 8th annual reunion and bring your friends, family and former co-workers.

Former workers in attendance from Cambridge were: Richard Anderson, Shirley Barnett, George Buttress, John Campaine, Harold Conrath, Ralph Cramblett, Don Frontz, Marjorie Gardner, Roberta Geese, William

continued on page 16

# CONVENTION ACTIVITIES

by PHYLLIS D. SMITH

(NOTE: All photo's used in this article and elsewhere in this issue have been furnished to us by Cindy Arent, Judy Momirov, Bill Smith and Frank Wollenhaupt. Thanks so much to each of you!)

When it comes to Conventions, it can be said that "N.C.C. really knows how to throw one!" This year was no exception. Chairperson Marybelle Moorehead was new on the job, but she came through and provided us with another great one. She is to be congratulated for a job well done!



**Marybelle Moorehead greets everyone during the Thursday night Convention Chairman's Reception.**



**Glen & Louise Everett and Mike Arent.**



**Charles Upton views the console sets (before they were filled with flowers, candles, etc.) provided by N.C.C. members for use on the Saturday evening Banquet tables.**

By the time the 15th Annual Antique Show & Sale opened Friday evening at 5 pm, there were over 300 customers in a line that stretched from the showroom door to way out in the parking lot of the motel. The first three customers were in line by noon! As shown in the next photo, these eager buyers were Glen and Louise Everett of Everett, Washington, and Mike Arent of Cambridge.



**Evidently the wait was worthwhile for Mike!**



Show co-chairpersons Joy McFadden and Mary Beth Hackett take a break while dealers get set-up and ready for the show opening. It was a beautiful show and everything went smoothly, as always! Every detail was carefully planned - right down to the showroom lights going out on schedule Saturday afternoon (only joking gals!).





As always, the Showroom at the Shenandoah was breathtakingly beautiful. A credit to our fine dealers, such as Joanne Paul who has been a dealer in all 15 of our shows.



Sid Garrett gave a cutting demonstration at the Degenhart Museum on Friday morning after "Coffee with Cambridge."



The glass shown here was donated for our mini-auction, held on Friday evening. N.C.C.'s auctioneer Willard Kolb managed to realize a profit of \$1,588.11 for the Museum from these 40 or so items. Many thanks to all who helped make this such a fun, as

well as profitable, event.

The silent auction held on Thursday evening did not realize the profit of the mini-auction, but it did bring in a total of \$42.00 for four small items. Thanks to all who donated items.

One of the pink Mt. Vernon cordial banquet favors was auctioned by president Mark Nye on Saturday evening and it brought \$48.



Mary Martha Mitchell and Gwen Cortese. These two very special ladies are also sisters, as well as former Cambridge Glass company employees.



The Flea Market on Saturday morning was held both inside and outside. These two photo's show the crowd at about 7 am.



As you can see, the Flea Market offered a lot of beautiful glass to the early risers!

The flea market was a first time effort on the part of Marlene and Harold Snyder, and from all reports, it was a good one. Congratulations and many thanks are in order to these two fine folks. Their efforts were appreciated!

---

# Club News

---

National Cambridge Collectors, Inc.  
Annual Meeting  
June 24, 1990  
Shenandoah Inn, Old Washington, Ohio

The meeting was called to order at 8:58 am by President Nye. In attendance were approximately 125 club members and 12 Board members.

A motion was made by Willard Kolb to dispense with the reading of the minutes from the previous meeting since they are published in the CRYSTAL BALL. Motion carried.

The treasurer's report was given by Bill Smith. He stated that in the July issue of the CRYSTAL BALL was a copy of the Auditor's report of the books of the organization.

Bill reported that as of May 31, 1990 our Operating Equity was \$23,131.00 and our Museum Equity was \$136,548.00, for a total of \$159,679.00. Bill explained that our equity was cash balances and assets that we have.

Bill Smith then reported that as of May 31, 1990 in our high interest money market account we had \$21,689.00 and as of June 24, 1990 in our checking account the balance was \$15,100.00, for a total in cash of \$36,789.00.

## COMMITTEE REPORTS

**MEMBERSHIP:** Chairman Phyllis Smith reported that we now have 963 Individual members, 364 Associates and 7 Honorary, for a total of 1,334. She stated that this was as of June 20, 1990 and did not include new members that had signed up during Convention.

Phyllis then reported that last year at the annual meeting we had 1,313 members and in 1988 we had 1,246, so we are showing a slow, but steady, growth.

Phyllis then asked for a moment of silence as she read the list of members, former glass-house workers, and friends, who had passed away during the previous year.

**CRYSTAL BALL:** Editor Phyllis Smith stated that those attending the Convention were given their July issue in their Convention

packet.

Phyllis then thanked all of those who had written articles during the year for the CRYSTAL BALL, as well as those who had written letters to the Editor, and the Study Group reporters.

Phyllis then gave a special thank you to Randy Lauer who does the typesetting of the masthead and the book list. Randy was also a first time convention attendee.

**STUDY GROUP ADVISORY:** Chairman Phyllis Smith reported that she has requested that President Nye replace her in this job next year, as she felt she was not doing the job justice.

Phyllis then called on each Study Group to give a report.

Cambridge Nudes: Phyllis Smith reported that they did not have a member in attendance, but that they were meeting off and on.

California Cambridge Collectors: Bill Losch reported that they have a minimum number of people and it is hard to meet at times due to traffic problems and the distances involved.

Cambridge Buffs: Charles Upton reported that this year they had been more active. On display they had a number of pieces of glass that they were donating to the Museum.

Cambridge Cordials: Judy Momirov reported that they are still working on the molds and on the video taping of the former workers. She also reported that they had purchased a video cassette player and television set for the Museum so that the tapes may be viewed by visitors.

Miami Valley of Ohio: Ron Hufford gave the club \$500.00 from the proceeds of the raffles on Thursday night. He reported that they are still working on the etching plates.

President Nye then read a letter from the California Cambridge collectors who gave a check for \$450.00 to the club.

**MUSEUM FACILITIES:** Willard Kolb reported that some drainage, grading and filling work were going on at the Museum. He also reported that, thanks to Larry Hughes, we now have county water installed.

continued on page 10



# Cambridge History

The following is a word for word transcription of a Cambridge Glass Company night watchman's report; a report written and dated April 11, 1928. Unfortunately time was not kind to the report and several words, as well as a portion of the paper, are missing. However, a majority of it survived.

"Cy Estep: Mr. Kelly

April 11, 1928

Please read and hand to or leave on Mr. Kelly's desk.

Last night 12 o'clock, Andy Scott the Floor Sweeper and takes care of Lehrs in morning in Assorting Room was held up and robbed in Oven Room by 2 men. He had \$7.00 in his pocket. They struck him over the head with a Revolver as the 6 shells 32 calibre was on Floor and Doc Mosser has the shells.

They had put out the light in Oven Room also. Also the light was turned off in Basement at foot of ladder. Andy has been carrying money and frequently has exhibited it in more than one instance. The parties who did this has worked here or is working here now, because they knew he frequently went to Oven Room at West End .....and they had set fire ..... Board to attract (beginning at this point the bottom portion of the first sheet of paper is gone.)

He has 2 gashes on head ..... Dock Mosser wanted to take him to the Doctor but he would not go.

Dock Mosser dressed his head and he was at work in Assorting Room balance of night.

He is an Italian and evidently Scott is not his name and there might possibly be something else attached to this, hardly possible as the two persons evidently knew the Glass House' and how to get in and out and knew him and how to get him. I talked to him but he claims he has no knowledge of any person or persons who would harm him.

Jno. S. Berry (signed)  
Watchman"

Change the dollar amount and the identity of the victim and the report could be dated today. Some things just don't change!

This is the first in a series of mini-articles based on documents recovered from the environs of the Cambridge Glass Company. Hopefully, some of the future ones will be a little more upbeat.

Prepared by Mark Nye

CLUB NEWS . . . . . continued from page 8

Willard also reported that after the Board's authorization, a new garden tractor/mower had been purchased for the Museum.

Willard then thanked those who had worked in the Storage building and on the grounds during the past year.

**MUSEUM INTERIOR:** Janice Hughes reported that all the doors of the cases had been cleaned inside and out, along with glass on display that had not been done last year. Also the back area for the copier and computer had been reorganized.

Janice then thanked all those who had helped during the previous year.

**NON-GLASS ITEMS:** J. D. Hanes reported that they had done some work on the molds, but had not had a lot of time.

J. D. than thanked those who had helped in this project.

**PUBLICITY:** Cindy Arent reported as to where in the print media she had placed advertising for the Show and the club.

Cindy also reported on television advertising and radio advertising she had placed and the comments received.

**PUBLICATIONS:** Bill Smith reported that a price guide update was done for the Color book and it would be reprinted very soon.

Bill then reported that in the last few weeks he had been in discussion with Collector's Books about the 1930-34 and the 1949-53 catalog reprints. They will be reprinted as soon as the price guide updates are done. They will be printed in soft cover this time.

Bill Smith then reported that he had hoped to have the Caprice book done by Convention, but did not, since he had been finding more information that needed to be included.

Bill then reported that Mark Nye is still working on the rewrite of the Stemware book.

**ACQUISITIONS:** Lynn Welker thanked those who had donated glass, money and other items to the Museum during the past year. He also thanked those who had helped by working at the Museum. He then thanked those who had loaned glass to the Museum.

Lynn then asked for some different colors for the Museum. Those needed included: pistachio, tahoe blue, Cambridge pink, late amber, late emerald green and mandarin gold.

Lynn Welker reported on the new numbering of the glass and the updating of the lists of glass on loan and owned in the Museum.

Mark Nye told about the Caprice display rack that had been purchased and is in the Caprice display in the Museum. Mark then reported on the other etching plates that had been found for the tubes used in these displays.

**AUCTION:** Chairman Lynn Welker thanked those who had consigned to the 1990 Auction. He stated that this was the most successful action ever. He reported that over 50% of those who had sent mail bids got at least one item that they wanted.

Lynn then reported that the date for the 1991 Auction would be announced later.

Lynn Welker then stated that he would accept lists of glass for consignment from September 1, 1990 to October 1, 1990. He stressed that this is lists only and for everyone not to send glass until he had contacted them.

**BY-LAWS:** No report.

**BUDGET & FINANCE:** David Rankin reported that last year he had stated a deteriorating in the finances and had recommended that the Board increase the membership dues. The Board had done this and we had shown a year end profit of \$117.00. David said that this was alright since the dues increase had not taken effect until late in the year. He hoped that 1990 will be better.

David Rankin then reported that total donations to the Museum were \$8,528.00 but the excess was only \$7,800.00. This was an increase in donations but some had to be used to pay expenses. David stated that we need to work on increasing revenue and work on book sales.

**ANTIQUÉ SHOW:** Joy McFadden reported that she would start on next year's show in August. She thanked the dealers and all those who had helped with the show.

**CONVENTION:** Chairman Marybelle Moorehead reminded everyone of the day's schedule of events.

continued on page 16

# CAMBRIDGE - - THE FIRST YEARS

PART IV

by MARK A. NYE

EDITOR'S NOTE: Part III was carried in the June 1910 issue of the CRYSTAL BALL. Unfortunately lack of space caused us to end the article in mid-paragraph. We will begin this month by concluding that paragraph and then continuing on.

01/08/12 "They are made for gas or electric fittings, and are really the newest of the many new things in the market. The demand for this class of goods has already been created, and with its many styles and decorations the Cambridge company is in position to meet all comers.

Another handsome feature of the display is the new La Tourene line, modeled after the famous old french pattern and made in infinite variety of articles.

It has a close second in the St. Regis line, which is attracting much attention because of its graceful lines and excellence in workmanship. It is a semi-colonial pattern, yet departing far enough from that standard to make it a novelty which bids fair to hold its own with any.

Another attractive feature of the display is a white enameled line, etched on perfectly plain glass and modeled along lines which appeal at once to the good taste of even a novice in matters glass. So pretty are the pieces on display that a whole table has been given over to them, and they present an appearance in keeping with the remainder of the handsome and well arranged lines. Then there are the famous lines of candlesticks, punch bowls and punch bowl sets, while an infinite variety of novelties add to the collection. The Cambridge has the best this year it has ever brought out, and the buyer who has seen the Cambridge in other years knows that all the resources of the glass industry have been brought to bear on the intelligence and skill of the splendid manufacturing organization to bring about such a result." CGL Note: This was a CGL reporter's opinion of the Cambridge display at the 1912 Pittsburg Exhibit.

12/23/12 "Our 'NEAR CUT' Brand Tableware and Novelties are well known and established

for QUALITY. Extra efforts have been made on this line, and we shall show some very choice new designs for 1913.

We now ask your attention to our NEW DEPARTMENT. We are producing a most excellent line of high grade, lead blown stemware, tumblers, etc., both in plain, optic, needle etched, deep plate etched and light cut patterns.

Extreme care has been given to the making of the staple bar goods, our patterns for size and shapes being exact duplicates of the old ROCHESTER STANDARDS . . . . .

FULL EXHIBITION of all new lines, pressed and blown, will be made at the Fort Pitt Hotel, Pittsburg, during January, 1913 and you are invited to inspect and compare for quality and design." CGJ

02/05/14 "The Cambridge Glass Co. have turned out some excellent patterns this season and the outlook for the years business under the capable supervision of D. King Irwin, the new sales manager of the company, is very promising. Among other things there is a particularly extensive showing of table glassware, and novelties in a colonial design and the clearness and fine color of the crystal adds materially to the attractiveness of the line. Both the thin blown stemware in dainty patterns, and pressed ware showing some clever new ideas are well represented in the stock.

Judging from their demonstrations, the lead blown tumblers of the Cambridge Glass Co. will stand some hard knocks without breaking. For sake of illustration, three tumblers were taken from the exhibit shelf, at the Ft. Pitt, thrown against the wall, a distance of forty feet, without a tumbler cracking." CGJ

08/20/14 "Dealers interested in securing a novelty that offers excellent possibilities as a money-maker should see the new three-piece epergne of the Cambridge Glass Co. in their 'Near-cut' table glassware on display at their local salesroom. Each of the three sections may be used separately as sweet pea vases and orange bowl, or the combination of the two sections as a fruit bowl with a centre flower-holder, or as a footed comport. It stands twenty-one inches high, and is an exact copy of one of the best cut glass patterns." CGJ

09/24/14 "The Cambridge Glass Co. will undoubtedly have a good demand for the new flower holders which D. King Irwin has just

continued on page 12



FIRST YEAR'S . . . . continued from page 11

placed on display. They include low, squat shaped bowls to be used in conjunction with a glass holder in the form of a turtle representing the reptile in the act of swimming through water. Numerous round openings hold the flowers." CGJ

12/17/14 "A complete assortment of stemware and numerous other items in a beautiful and novel design and shape, for both of which D. King Irwin is responsible, is now being shown at the salesroom of the Cambridge Glass Co., 90 West Broadway. This is not the first time Mr. Irwin has demonstrated his ability as a designer, but he has never turned out anything prettier than this cleverly-arranged Fuschia pattern in a deep etching on a shape that is out of the ordinary and exactly suited to the design." CGJ

12/31/14 "Arthur J. Bennett, president of the Cambridge Glass Co., arrived in New York Wednesday morning and left Thursday night. He was accompanied by F. E. Anderson, who is to assume charge of the Byesville plant of the Cambridge Glass Co." CGJ

02/25/15 "The Cambridge Glass Co. have increased their lines of light cuttings until it now ranks with the most complete display of this class of goods from one factory on the market. Among the new designs being exhibited by D. King Irwin at 92 West Broadway a floral cluster effect with a butterfly in flight is decidedly effective." CGJ

05/06/15 "On account of the improved condition of business, the Cambridge Glass Co. has placed its third furnace in operation, thus putting the factory on full time. The furnace at Byesville is also working steadily. Under the management of Arthur J. Bennett this plant is steadily increasing its sales, and is now said to be one of the most active factories in the country." CGJ

11/18/15 "The Cambridge (O.) Glass Co. has recently enlarged its office building and has erected a new boiler house and etching room at its Byesville plant." CGJ

12/30/15 "D. King Irwin, local manager (Ed. note NYC) of the Cambridge Glass Co. has a host of new goods, among which is an excellent line of flower bowls in very rich shades of blue and black, with birds to match, the latter being well molded and above the average seen on the market. A new line of Gothic

design that is sure to win the approval of buyers. The line comprises fifty pieces, and includes everything the business demands." CGJ

01/13/16 "One of the most novel exhibits is that of the Cambridge Glass Co. which is showing three new lines of glass, blue, black and green -- comprising flower blocks, bowls, vases, handled baskets, and a host of other novel pieces." CGJ

05/01/16 "A neat handled and footed ice tea was added recently to the No. 7606 line made by the Cambridge Glass Co. ....The new item is produced either plain or etched and bids fair to become a very popular number." CGJ

05/25/16 "A speciality recently introduced by the Cambridge Glass Co. and now being exhibited by D. King Irwin at the concern's local salesroom (NYC) is a line of baskets with a special patented feature that assures it proving one of the biggest selling novelties of its kind on the market. Part way down the inside of the basket is fitted a perforated flower holder, held neatly in place by a glass ledge. They are shown in various sizes and in several very pleasing 'pressed-cut' patterns." CGJ

07/20/16 "W. L. Orme, superintendent of the Cambridge Glass Company's Byesville plant, visited the New York office the first half of the week to consult with D. King Irwin." CGJ

10/12/16 "The etched decorations on the 'Mulberry' glass of the Cambridge Glass Co. are proving very popular with the trade." CGJ

12/11/16 "The illustration carried herewith shows the handsome eight-inch Moss Rose bowl, No. 3200, manufactured by the Cambridge Glass Co. ..Secretary W. C. McCartney states that the company can ship a limited number of eight-inch bowls and Sugar and Cream Sets in this pattern in time for Christmas Trade, provided orders are sent in at once." CGL

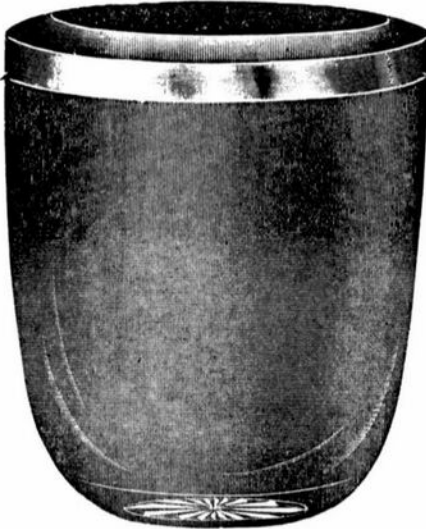
12/07/16 "The Cambridge Glass Co. plans to increase its cutting facilities, and as soon as possible will install from 75 to 100 frames. The concern has had a heavy demand all season for its cut lines, and conditions have reached the point where additional production is absolutely necessary." CGJ

01/29/17 "Arrangements have been completed

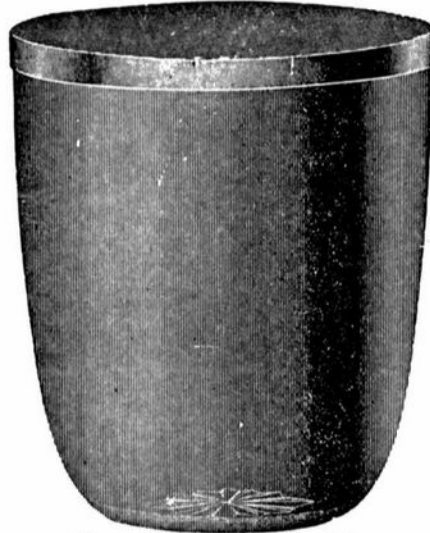
continued on page 16

# Jelly Tumblers.

SCALE, FULL SIZE.



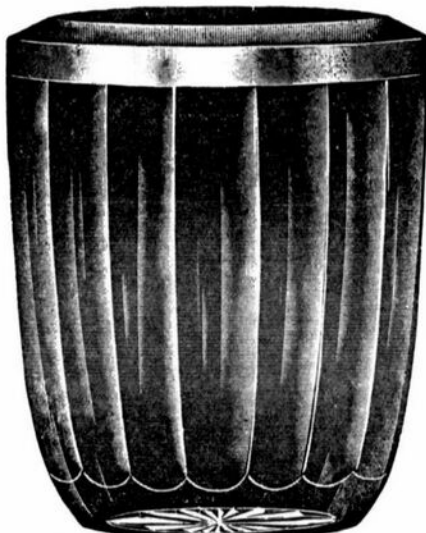
No. 261 6 ounce Plain Jelly  
Packed 23 dozen in a barrel.



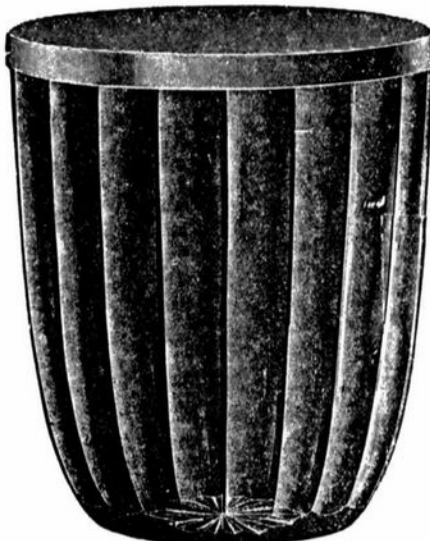
No. 252 One-third Pint Plain Jelly.  
Star Bottom.  
Packed 21 dozen in a barrel.



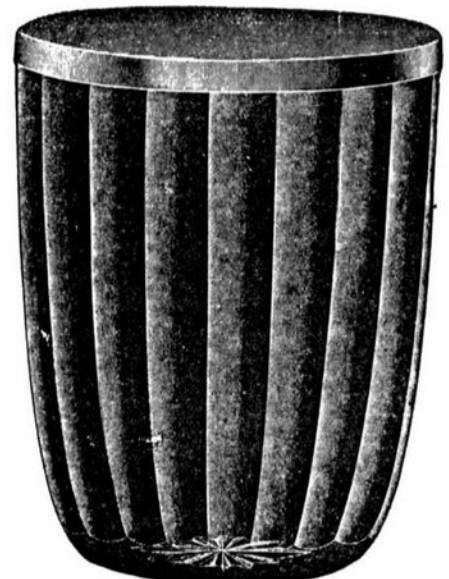
No. 253 One-half Pint Plain Jelly.  
Star Bottom.  
Packed 20 dozen in a barrel.



No. 262 6 ounce Fluted Jelly.  
Packed 23 dozen in a barrel.



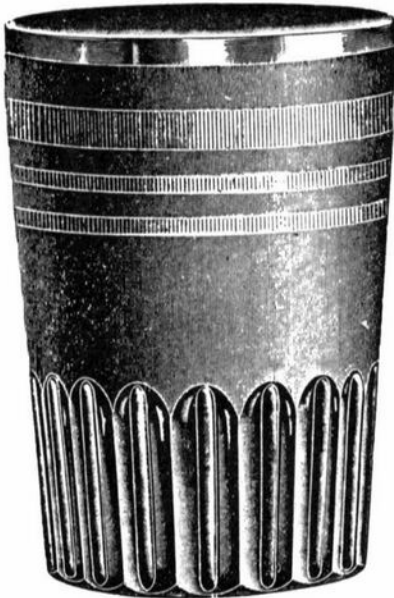
No. 250 One-third Pint Jelly, Fluted  
Star Bottom.  
Packed 21 dozen in a barrel.



No. 251 One-half Pint Jelly, Fluted.  
Star Bottom.  
Packed 20 dozen in a barrel.

# Jelly Tumblers.

SCALE, FULL SIZE



No. 254 7 ounce Jelly Tumbler.  
Packed 30 dozen in a barrel.



No. 255 7 ounce Jelly Tumbler.  
Packed 20 dozen in a barrel.



No. 257 7 ounce Jelly Tumbler.  
Packed 20 dozen in a barrel.



No. 256 5 ounce Jelly Tumbler.  
Packed 30 dozen in a barrel.



No. 258 One-third Pint Jelly, 8 oz.  
Packed 30 dozen in a barrel.



No. 259 7 1/4 ounce Jelly Tumbler.  
Packed 20 dozen in a barrel.



# Where is Rose??

by PHYLLIS D. SMITH

That was the question heard most often during Convention weekend. As most of you know, Rose McAfee was no where to be found.

Rose has been our convention reporter for so many years now, that it is hard to remember a time when she wasn't with us! Unfortunately, she didn't make it this year. And of course, her absence brought many inquiries as to her whereabouts.

We aren't really sure at this point where the fault lies, who is to blame, or what, if anything was or was not done that could have prevented this mix-up. About as close as we can come to fixing blame is to say that we are fairly certain that someone at the newspaper office slipped up and didn't pass the word on to Rose that we had requested she cover our activities; and thinking we didn't need her, she made other plans!

All we really know for sure is that wires got crossed somewhere along the way, and Rose ended up in Florida rocking her brand new granddaughter, and we almost ended up without a reporter to cover our convention activities.

At any rate, our story does have a happy ending. Our friend Rose had a lovely vacation in Florida with her new grandbaby and we found out that we have talent we never dreamed of, right here in our club, and better yet, living in Cambridge, Ohio. Her name is Lorraine Weinman and she is a member of the Cambridge Cordials Study Group.



Reporter Lorraine Weinman, shown here with hubby Kevin - having fun during convention.

Lucky for us that Lorraine agreed to step in and take over. And take over, she did. I'm sure everyone will agree that she did a really great job for us, and we really owe her a tremendous amount of thanks and gratitude for the effort she put forth on our behalf.

THANKS LORRAINE!

And we apologize to Rose for the mix-up, but send our CONGRATULATIONS on the birth of that new granddaughter!

---

---

## Election Results

At the Friday evening get-together during Convention, club Secretary, J. D. Hanes gave the report from our Election of persons to the Board of Directors.

Those elected were: Judy Momirov, Mark Nye, and Bill Smith. Congratulations one and all!

Club officers were all reelected during Board meeting held on Sunday morning, June 24th.

We were sorry to lose Marlene Snyder as a member of our Board of Directors. She has been an asset to the Board, and a very hard worker. She, along with her husband Harold have devoted many hours to our club (they co-chaired the Flea Market this year). However, we have only lost her as a member of the Board and not as a member of the N.C.C.! Sincere THANKS to you Marlene for all your contributions over the years, and we look forward to working with you in the future.

---

---

## - -On The Sick List - -

We have received word that club member Margie Hosfeld (mother of Donna (Drew) Davis) has lung cancer.

Nellie Rankin (mother of Dave Rankin) was in an auto accident convention weekend and suffered a broken leg.

We send our GET WELL SOON message to both of these lovely ladies!!

---

---

**DON'T FORGET THE QUARTERLY MEETING  
and PICNIC - AUGUST 4, 1990  
details on pages 3 and 20**

---

---

CLUB NEWS . . . . . continued from page 10

Frank Long then thanked everyone for their concern during his illness.

**OLD BUSINESS:** President Nye reported that we had now received \$19,000.00 for the Fund Drive. He thanked all those who had given to it.

**NEW BUSINESS:** President Nye reported that ground had been broken on a new civic center in Cambridge and it could be used for our convention. The first year that we could use it would be 1992.

President Nye then reported that unofficially we had been in contact with the owner of the factory about the possible purchase of it. This was due to the fact of a story in Cambridge that it was going to be demolished. Our first offer had been turned down.

We had been considering a second offer, however under a close examination over the weekend we had found very serious structural problems with the office building. This building was under consideration for a possible museum site in the future.

President Nye then stated that it would probably cost in the area of \$500,000.00 just to stabilize the structure and that this was not feasible.

Much discussion and questions followed and the general consensus was to see if there was anything that could be purchased from the factory and not to pursue the purchase any further.

Virginia Houston asked if any more thought had been given to doing away with the Show on Sunday and closing it on Saturday.

President Nye reported that the Board would be discussing it this year.

President Nye then announced that a Board meeting would follow the Annual meeting.

President Nye then reminded everyone of the Former Workers Reunion.

A motion was made by Janice Hughes to adjourn at 10:01 am. Motion carried.

Respectfully submitted,  
J. D. Hanes, Secretary

REUNION . . . . . continued from page 5

Gerda, Mary Grudier, Mary Holiday, Alice Howell, Ed Lehotay, Fern Lengen, Mike Lengen, Richard Long, Helen Marsh, Dorothy McFarland, Vernon Mercer, Mary Martha Mitchell, Edna Nicholson, Bea Stillion, Velva Vandenberg, Elva Volz, Ralph Whitis, Mabel Williams, and Martha Wilson.

Others in attendance were: Olga Berilla, Mary Burik, and Helen Lucas, all from Byesville; Steve Bock, Okeechobee, Florida; Anna Cornelius, New Concord; Gwen Cortese, Winter Haven, Florida; John Cowgill, Canton; Jean Cunningham, Lancaster; Lois Hall, Salesville; Anna Lengen, Lore City; Dan and Agnes Slay, Nashport; and Bill Smith, Springfield.

FIRST YEAR'S . . . . . continued from page 12

by Arthur J. Bennett, for the installation of a fuel gas plant at the factory in order that the troubles incident to the uncertain supply of natural gas may be overcome." CGL

09/20/17 "A new item for the kitchen announced by the Cambridge Glass Co. is an ant tray, one of whose two recesses is for the table leg, and the other for water. The tray is especially adaptable for refrigerators, and is made of a grade of glass that will withstand rough usage." CGL

11/05/17 " . . . A new producer has been completed for the Cambridge Glass Co, by Mr. Morton, where the lehrs and pot arches are also equipped for producer gas." CGL

to be continued . . . . .

FENTON ART GLASS COLLECTORS  
OF AMERICA, INC.

ANNUAL CONVENTION

AUGUST 14 - 17, 1990  
Marietta, Ohio

For Information: FAGCA  
P.O. Box 384  
Williamstown, WV 26187

## — Classified —

**FOR SALE:** All amber, etched Cleo: 10" dinner plates (8); luncheon plates (8); bread & butters (8); cups & saucers (8 sets); 4 1/2" water glasses (8); parfaits (8); candleholders (2); console bowl; ice bucket; and sugar & cream. Also large unetched sandwich tray in amber. Make offer. **Mrs. John T. Paulson**, E3125 Benrud Lane, Eau Claire, WI 54701-8511. UPS and Insurance Extra.

**FOR SALE:** Royal blue Mt. Vernon: cups & saucers (4 sets); 5 oz. tumblers (4); 3 oz. tumbler; 5" berry bowls (3). All \$400. **Robert Riley**, P.O. Box 4180, Springfield, MA 01101. Phone: 413/737-0884.

**WANTED:** Chantilly sherbets, one or two, #3625. **Eileen Ford**, 112 Shaw Pl., Glenshaw, PA 15116. Phone: 412/486-8421.

**WANTED:** Items etched Wildflower. **Lynda Neale**, 507 Edgewood Dr., Coffeyville, KS 67337.

**WANTED:** Cambridge Apple Blossom in crystal. **Dana Stephens**, Route 2, Box 235, Ellis Grove, IL 62241.

## WE GET LETTERS

Zack and I would like to thank everyone for their cards and calls. Your words of kindness and sympathy helped us through a very difficult time. Hopefully, next year, we can be with you again at the convention.

With affection,  
**Roni Sionakides**  
Michigan

Dear NCC Officers and Whomever may be interested,

My husband and I visited the Cambridge Convention for the first time this year and all I can say is, we wish we had done it sooner. What an eye opener into the world of Cambridge. We found everyone so very helpful and gracious. We saw more Cambridge glass than you see here in ten shows.



Due to being on a very strict diet, we did not sign up for the breakfasts and dinners, except for the Friday night buffet. I was immediately sorry since we found the sociable part so important. Next year we will do it all. Might I make one suggestion. Usually on a buffet there are more vegetable type salads (lettuce, tomatoes, green pepper) and meat other than ham. We signed up feeling that at least there would be something on my diet. The only thing I was really allowed was the carrot sticks and celery. I did eat the ham and roll anyway, but it was a disappointment. The mini-auction and program was great. We sat with some very nice people who we had never met before and had a great time.

Looking forward to next year and meeting more of the people that make the convention the success that it is.

Sincerely,  
**Janice (and Don) Applegate**  
New Jersey

School starts at the end of this month.

PLEASE DRIVE CAREFULLY!!

FOSTORIA	FENTON	HEISEY
 <b>TIFFIN GLASS COLLECTORS' CLUB</b> <b>5TH ANNUAL ANTIQUE SHOW &amp; SALE</b>	 <b>NATIONAL GUARD ARMORY</b> 500 Riverside Drive Tiffin, Ohio	<b>ADMISSION \$1.50 per person</b>  Saturday, September 15, 1990 — 10:00 a.m. to 8:00 p.m. Sunday, September 16, 1990 — 11:00 a.m. to 5:00 p.m.
		<b>GUESTS: * Fred Bickenheuser; Author, Tiffin Books</b> <b>* Roserita Ziegler; Glass Historian</b>
		For more information call:  <b>Shirley (419) 447-9875</b>
		<b>Joyce (419) 435-1262</b>
DUNCAN-MILLER		CAMBRIDGE



# L. A. MANESS

RT. 1, BOX 552, ASHLAND, VA 23005  
(804) 798-1825

C = MARKED P & I \$3 CTN.

## CROWN TUSCAN

SS33 4" Shell ashtrays (2) ea.....\$ 25  
Round 6" diameter ashtray.....\$ 25  
SS16 7" Shell comport C.....\$ 75  
SS18 10" Shell 3-ftd. bowl C.....\$ 95  
SS35 Shell covered cigarette box..\$ 75  
Dolphin duo candlesticks, pair....\$ 295

Cascade sherbets (8) each.....\$ 11

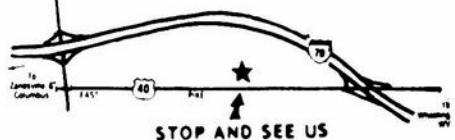
Round 9½" plates w/#520 etch,  
green (8) C each.....\$ 18

#3400/48 13" 4-ftd. shallow bowl  
w/crimped edge.....\$ 25

VISA/MASTERCARD WELCOME

# Stage Coach Antique Mall

WELCOME TO GLASS COUNTRY!



RT. 40 ONE-HALF MILE WEST OF I-70 EXIT #164  
MANY DEALERS - WIDE SELECTION - PLENTY PARKING

WE FEATURE GLASSWARE OF:  
CAMBRIDGE, HEISEY, FENTON, & FOSTORIA  
Plus Art Pottery & a General Line of Antiques

**DORIS AND ROY ISAACS**  
BUY AND SELL  
614-872-3720



7525 EAST PIKE  
NORWICH, OHIO 43767

MON THRU SAT 10-5:30 SUN 12-5:30  
SUMMER EVENING HOURS BY CHANCE

# SPRINGFIELD Antique Show & Flea Market

Clark County Fairgrounds

## SPRINGFIELD, OH

Exit 59 on I-70

400-800 DEALERS

INSIDE AND OUTSIDE

Ohio's largest year round show with an  
emphasis on quality antiques

9:00 AM - 5:00 PM

Admission \$1.00

Children under 12 FREE

NEXT SHOW

AUGUST 18 & 19, 1990

### 1990 SHOW DATES

SEPT.	14-15-16	Extravaganza
OCT.	20-21	Inside & Outside
NOV.	17-18	Inside
DEC.	8-9	Inside

BRUCE KNIGHT, MGR.

For Information Write  
P.O. Box 2429, Springfield, OH 45501  
Phone (513) 325-0053

# The DAZE

**\*SPECIAL OFFER**  
to NCC friends \$2. off  
the 1 year subscription  
price when on this form  
or copy of.

The Original National monthly newspaper dedi-  
cated to the buying, selling & collecting of colored  
glassware and china including Depression Glass  
and the Elegant Glass (Cambridge, Heisey, Fostoria,  
etc.) We educate and inform you each month with  
feature articles by top notch columnists,  
readers "finds", club happenings, show news and a  
multitude of ads. Find those missing pieces to your  
30s, 40s or 50s pattern. Can't identify it? Perhaps  
we can help "Keep up with what's happening with  
a subscription to the DAZE. Buy, sell or trade from  
the convenience of your easy chair.

Name \_\_\_\_\_ Street \_\_\_\_\_

City \_\_\_\_\_ State \_\_\_\_\_ Zip \_\_\_\_\_

1 yr \$17 2 yrs \$33 \$2. Single Current Copy

Exp date \_\_\_\_\_ Card No. \_\_\_\_\_

Signature \_\_\_\_\_

Orders to D.G.D., Box 57NC, Otisville, MI 48463

Please allow 30 days for your first issue. Canadian subscribers, add \$1.  
per year and subscribe by charge card only! This Special Offer may not be  
combined with any other special offer.

# DEALERS



# DIRECTORY

NOTE: When writing to the Dealers listed here, please enclose a SASE!

<p><b>YOU CAN ADVERTISE YOUR ANTIQUE SHOP HERE!</b></p>	<p><b>BENICIA ANTIQUE SHOP</b> 305 First Street Benicia, California 94510  OPEN 11 AM - 5 PM Closed Monday  Z. E. LOPES 707-745-0978</p>	<p><b>THE MUTED SWAN ANTIQUES</b> 5486 Peachtree Rd. Chamblee, GA 30341 Heart of Chamblee Antique Row Specializing in Cambridge, Heisey and Fostoria Bill &amp; Pat Miller 404-451-7620</p>
<p><b>SANDY'S ANTIQUE MALL</b> 617 Wheeling Ave. Cambridge, OH 43725 Phone 614/432-2570  COLLECTOR'S ITEMS Summer 9 - 6 Daily * Winter 9 - 4:30 Mon - Sat</p>	<p>VISIT HISTORIC BENICIA and its 28 shops Off Interstate #80 ..... ..... North of San Francisco</p>	<p>Elegant Depression Era Glassware  <b>ABBA ANTIQUES</b> 1157 Charlie Lane Lilburn, GA 30247 Bill &amp; Barbara Adt (404) 279-1942 Shows, Mail Order, &amp; by Appointment</p>
<p><b>THE GLASS URN</b> 456 West Main Street, Suite G. Mesa, AZ 85201 602 / 833-2702 Mail Order Shows Open Shop CAMBRIDGE, FOSTORIA, HEISEY, ETC.</p>	<p><b>ANTIQUES ON THE MALL</b> SPECIALIZING IN CAMBRIDGE GLASS Stagecoach Mall - Bldg. 3 - Norwich, OH Virginia Bennett 614/432-4483 64183 Warne Drive, Cambridge, OH 43725</p>	<p>"HAPPINESS IS" The Stultzs 3106 Warren Court Glen Allen, VA 23060 SHOWS &amp; MAIL 804-672-8102 (RICHMOND AREA)  AMERICAN MADE GLASS CIRCA 1890-1960.</p>
<p><b>ETTELMAN'S DISCONTINUED CHINA &amp; CRYSTAL</b> Cambridge a Specialty P.O.Box 6491-CB Corpus Christi, TX 78466 Phone (512) 888-8391 Include S.A.S.E.</p>	<p><b>D &amp; D ANTIQUES</b> Columbus, Ohio  DICK SLIFKO SHOWS ONLY</p>	<p><b>BUYING COLORED CAMBRIDGE GLASS</b> (Send List with Prices) <b>FEDERAL HILL ANTIQUES</b> 78 Maple Street Bristol, CT 06010</p>
<p><b>THE GLASS CUPBOARD</b> 39 Shire Oaks Drive Pittsford, New York 14534 Marcia Ellis Cambridge, Duncan Miller (716) 586-7596 Shows, Mail Order, Appt.</p>	<p><b>JUDY'S ANTIQUES</b> Judy Bennett 422 S. Ninth Street (Corner of Jefferson) Cambridge, Ohio 43725 BUYING Ph. 614-432-5855 SELLING Cambridge Glass my Specialty</p>	<p><b>YOU CAN ADVERTISE YOUR ANTIQUE SHOP HERE!</b></p>
<p><b>YOU CAN ADVERTISE YOUR ANTIQUE SHOP HERE!</b></p>	<p><b>GREEN ACRES FARM</b> 2678 Hazelton Etna Rd., Pataskala, OH 43062 (State Route 310 North) Sat. &amp; Sun. 1-7 PM 614/927-1882 Antiques, Crystal Glass and Collectibles</p>	<p><b>COSHOCTON ANTIQUE CENTER</b> 309 South 4th Street Coshocton, Ohio 25+ Dealers - Open 10-6 (Closed Mon. Winter) Glass Restoration &amp; Chair Caning 614 622-3223</p>
<p><b>THE HITCHING POST</b> 7467 S. R. 88 Ravenna, OH 44266 Ph. 216-296-3686 D. McDaniel CAMBRIDGE - HEISEY - GENERAL LINE</p>	<p><b>PATCHES OF VIRGINIA</b> Specializing in China and Glass Virginia T. Houston 34116 Roberts Rd., Eastlake, OH 44095 Phone: (216) 975-8315</p>	<p><b>YOU CAN ADVERTISE YOUR ANTIQUE SHOP HERE!</b></p>
<p><b>JOHN C. WOLFE, JR.</b> Visual Display, Suite S 592 E. Main St., Columbus, OH 43215 CAMBRIDGE, A SPECIALTY VINTAGE WRISTWATCHES</p>	<p><b>REMEMBRANCES</b> 7597 Daphne Dr., No. Syracuse, NY 13212 Shirley S. Ladouceur 315 / 458-5297 ANTIQUES and COLLECTIBLES MAIL ORDER SHOWS APPOINTMENTS</p>	<p><b>MARGARET LANE ANTIQUES</b> 2 E. Main St., New Concord, OH 43762 Lynn Welker 614/826-4418 CAMBRIDGE GLASS MATCHING SERVICE Hours Mon.-Fri. 1-5 PM or by Appointment</p>
<p><b>GLASS RESTORATION</b>  BRILLIANT CRYSTAL ELEGANT DEPRESSION DON &amp; LYNNE WORMLAND MT. CLEMENS, MICH. (313) 791-9191</p>	<p><b>WATKINS</b> (Fine Quality) <b>CAMBRIDGE GLASS SHOP</b> 1429 Marquand Ave. (Corner of Woodlawn) Cambridge, OH (614)432-4460 Lana Watkins</p>	<p><b>BUD'S TRADING POST</b> GENERAL STORE - FLEA MARKET 501 Wheeling Ave. Cambridge, OH 43725 10-5 Mon. thru Sat. 614-432-4688 CAMBRIDGE - PATTERN - ART GLASS This Bud's for Y'all</p>

# QUARTERLY MEETING & PICNIC

## Saturday, Aug. 4 at the Museum

**Flea Market 10 - Noon    Picnic Lunch Noon - 1pm  
Quarterly Meeting 1 pm**

**BRING A COVERED DISH, YOUR TABLE SERVICE, & CHAIRS**

### CONVENTION GETAWAY DAY

by Paul E. White

It's getaway day in Cambridge  
All tired out from having fun,  
Reliving the same ole memories  
Back to convention Number One.

So pack up the family heirlooms  
And all the new ones you bought  
And take a last look around you  
For the missing,  
you've still not got.

Say goodbye to your next door neighbor  
The committee, the old board and new,  
And start planning for next year's  
journey,  
This one is almost through.

---

## AUGUST 1990

Flower — Gladiolus • Birthstone — Peridot

National Cambridge Collectors, Inc.  
P. O. Box 416 Cambridge, Ohio 43725

**FIRST CLASS MAIL**

FIRST-CLASS MAIL  
U.S. POSTAGE  
**PAID**  
So Vienna, Ohio  
45369  
Permit No 15

### Membership Renewal Notice

This is your **last** issue of the *Crystal Ball*—if the date on your address label reads 8-90.

*Please renew now!*