



Cambridge Crystal Ball

Published monthly by the National Cambridge Collectors, Inc.
to encourage and report the discovery of the elegant and boundless product
of the Cambridge Glass Company of Cambridge, Ohio

Issue No. 205

May 1990

From The President's Desk

In the years I have been traveling to Cambridge, there have been some unusual routings, most to save money; but on occasion, out of necessity, if I wanted to travel on certain days. However, none were quite as strange as the one reported in my article last month. Somewhere along the line, between the time I wrote my article, and it was printed, my flight from Atlanta to Miami also included Chicago! Actually folks, it was a straight shot, Atlanta to Miami. (Ed. Note: Sorry, my mistake!)

The trip to Texas was a most enjoyable one. Peggy and John Scott did an outstanding job in providing a Cambridge display, and Myrna and Bob Garrison's hospitality left nothing to be desired. I also got to see one of the country's outstanding collections of Imperial Candlewick and Cape Cod. Oh yes, the trip home, well that is another story for another time, except to say the Dallas/Ft. Worth airport was closed for two hours the afternoon I was to depart. I did get home that evening, but certainly not at the time planned.

Not much to report in the way of Club news that hasn't been printed already. The annual Convention is almost here, registration forms are in this issue, and having served as convention chairman, I know it is most helpful when these forms are returned quickly. To ease the burden on this year's chairman, Marybelle Moorehead, and our secretary, J.D. Hanes, I urge everyone, planning on attending this year's convention, to send in your registration form early. It promises to be a great convention. Marybelle and all the committee chairpersons have been diligently working to prepare an event that

everyone will enjoy.

If all goes well, I hope to reintroduce the Figural Slide Program, not seen for a couple of years; as well as present a new one dealing with a portion of the Convention theme, Cambridge Pinks.

Also included in this month's newsletter is your Ballot for use in this year's election of members to the N.C.C. Board of Directors, along with a resume for each nominee. Please read the resumes, make your choice, mark your ballot and return it by the deadline given. For the benefit of new members, and a reminder to "old" members, the membership elects the Board of Directors (three each year for four year terms). For those of you who are unable to attend meetings, this is an opportunity to have a direct voice in how the club is run, by voting for your choices to be Directors. All members are encouraged to vote and to mail ballots early so they arrive in Cambridge by the deadline. Results of the election are announced at the opening session of the Convention, this year taking place on June 22nd. The Board, following the Annual Meeting, then elects the officers who will serve during the following year. The 1990 Annual Meeting will be held on Sunday June 24th, as part of the Convention activities.

We will be awarding the "Committed to Cambridge" awards, to all those who have donated \$104 to the fund drive, during Convention weekend, probably on Friday night. More on this next month.

Until next month . . . Collect Cambridge!

Cambridge Crystal Ball

Official publication of National Cambridge Collectors, Inc., a non-profit corporation with tax exempt status. Published once a month for the benefit of its members.

Membership is available for individual members at \$15 per year and additional members (12 years of age and residing in household) at \$3 each. All members have voting rights, but only one *Crystal Ball* will be mailed per household.

Back issues of the *Crystal Ball* are available (beginning with Issue No. 1, May 1973) for members only. Cost: \$1.00 each or 12 issues for \$10.00.

1989-90 Officers & Committee Chairpersons

President	Mark A. Nye
Vice-President	Cynthia A. Arent
Secretary	J.D. Hanes
Treasurer	William C. Smith
Sergeant-at-Arms	Marlene K. Snyder
Acquisition	Mark Nye, Lynn Welker, Bill Smith, Joy McFadden, J.D. Hanes
Budget & Finance	David B. Rankin
By-Laws	J.D. Hanes
Membership	Phyllis D. Smith
Museum—Facilities	Willard P. Kolb, Doyle Hanes
Museum—Interior	Lynn Welker, Janice Hughes, Marybelle Moorehead
Non-Glass Items	J.D. Hanes, Cindy Arent, Judy Momirov, Marlene Snyder
Nominating	Willard P. Kolb
Program	R. Clarke West
Project	William C. Smith
Public Relations	Bill & Phyllis Smith
Publicity	Cynthia A. Arent
Study Group Advisor	Phyllis D. Smith
1990 Auction	Lynn M. Welker
1990 Antique Show	Joy R. McFadden, Mary Beth Hackett
1990 Convention	Marybelle Moorehead
1990 Flea Market	Doyle C. Hanes
Crystal Ball Editor	Phyllis D. Smith

Classified Advertising Rates

10 cents per word \$2.00 minimum
We cannot mix type size in classified advertisements. Abbreviations and initials will count as words. Payment in full must accompany all ads.

Display Advertising Rates

(Camera-ready ads preferred)	Members	Non-Members
1/8 page	\$ 6.00	\$10.00
1/4 page	10.00	15.00
1/2 page	18.00	25.00
3/4 page	25.00	35.00
Full page	33.00	45.00

Dealers Directory

Five-line maximum \$18.00 for 12 months

Cambridge *Crystal Ball* assumes no responsibility for items advertised and will not be responsible for errors in price, description or other information.

Advertising copy, articles, club news and notices must be in our hands by the 10th of each month to assure publication in our next issue.

Paid advertisements containing reproductions or new glass will not knowingly be accepted for publication.

Opinions or information stated in any signed article or letter printed in the *Crystal Ball* are those of the authors and may or may not agree with National Cambridge Collectors, Inc. The Editor reserves the right to refuse and to edit any material submitted for publication so as to conform with the editorial style of the *Crystal Ball*.

Please Address All Correspondence to:

National Cambridge Collectors, Inc.
P.O. Box 416 Cambridge, Ohio 43725

President — Mark A. Nye, 305/221-0343

Secretary — J.D. Hanes, 614/432-6794

Editor — Phyllis Smith, 513/323-3888

Please notify us immediately of any change in your address.

Please enclose an SASE when requesting information.

CAMBRIDGE GLASS BOOKS FOR SALE

by National Cambridge Collectors, Inc.

* **COLORS IN CAMBRIDGE GLASS**
(128 pages - 60 color plates - fully indexed)
Hardbound with Price Guide \$19.95

* **1930-34 CAMBRIDGE GLASS CO. CATALOG REPRINT**
(250 pages *Out Of Print* catalog)
Hardbound with Identification Guide \$14.95

* **1956-58 CAMBRIDGE GLASS CO. CATALOG REPRINT**
(164 page reprint of original catalog)
Paperback \$6.95

1985 COMBINED PRICE GUIDE
for 1930-34 & 1949-53 catalog reprints Postpaid \$5.75

*NCC MEMBERS ONLY: These publications are available at 10% discount

by Bill & Phyllis Smith

CAMBRIDGE GLASS 1927-1929
(66 page reprint of original catalog)
Paperback with Identification Guide \$7.95

by Cambridge Buffs Study Group

NEARCUT
(108 page reprint of 1910 Cambridge Catalog)
Paperback with Price Guide \$9.95

by Mary, Lyle and Lynn Welker

CAMBRIDGE GLASS CO.
(120 pages of reprint from 8 old catalogs)
Paperback \$6.95

CAMBRIDGE, OHIO GLASS IN COLOR II
Spiralbound \$5.95

by Harold and Judy Bennett

1903 CAMBRIDGE GLASS CO. CATALOG REPRINT
(106 page reprint of an original catalog)
Paperback \$7.50

Address your orders to:

BOOKS
National Cambridge Collectors, Inc.
P.O. Box 416
Cambridge, OH 43725

Please add \$1.00 (P & I) per order.

(Not required for Price Guide)

Ohio residents please add 6% state sales tax.

DEALER DISCOUNTS AVAILABLE - PLEASE WRITE!

NCC Museum of Cambridge Glass

The Museum is located on U.S.40, one-eighth mile East of I-77 near Cambridge. Hours: 10 am to 4 pm Wednesday thru Saturday. Noon to 4 pm Sunday. March thru October Closed: Monday & Tuesday Easter and July 4th

Phone: 614/432-4245

DON FRONTZ

WORKER OF THE MONTH

by LORRAINE WEINMAN

At the March meeting, Don Frontz and his wife Betty, were guests of the Cambridge Cordials Study Group. Don Frontz provided us with a wonderfully informative presentation in our continuing project to interview former Cambridge Glass Company workers.



DON FRONTZ

Don worked at the Cambridge Glass Factory in the Hot Metal Department from 1940 until 1951. He came prepared with some interesting pictures and personal stories to share with us. Several of these pictures will be displayed at the Museum.

Don vividly described the process of getting a job at the glass factory, as he did at the age of 16. He identified the difference between the two unions that were in existence: Local 74 - the "skilled" workers; and Local 504 - the "boys" workers. It was interesting to learn that he, like others, had to "stand in line" at the factory to wait until he was needed to fill in someplace. He stated that this was like trying-out, because if they liked the work that you did in a job, they would probably have you back at that position again. He described the process of

going through the channels to become a presser or finisher: how one could start out by "warming-in" or "carrying-over" and was not allowed to touch a punty or press until they had been there for about a year. After a year, in order to become an apprentice, one would have to be represented by a member of Local 74.

Since he was experienced as a "gatherer," Don was able to present a realistic picture of this position to the group. The quality of the glass piece depended a lot on the gatherer and presser working well together. The gatherer had to gauge how much glass to bring out on the punty and to put it into the mold correctly for the presser, so that he could cut it off without leaving shear marks or lap marks. This teamwork was an important factor.

Don detailed the entire process: from the furnace and the pots to the finished glass pieces. He made the work come alive through his accounts and amusing personal stories. It was easy to see that it was extremely hard work, but that humor was often interjected. How fascinating it was to hear the "move" figures (the amount of an item that the shops were to produce in four hours) that he quoted. It's amazing to think of their producing 600-700 small items (like salts) or 260-300 larger items (like nudes) in that amount of time. And to think that they sometimes produced even more than their "move!"

Don has provided us with an excellent videotape. The information and experience which he has related are well worth hearing. His accounts are complete and easy to understand. We appreciate that he has been willing to share his knowledge with the Cambridge Cordials and with other N.C.C. members.

NATIONAL CAMBRIDGE COLLECTORS, INC.

ANNUAL CONVENTION

June 21 - 24, 1990

TENTATIVE SCHEDULE of CONVENTION EVENTS

THURSDAY - June 21st

- 10:00 am - Convention Office Opens in Room 100. Registration packets available for pick up. **Bring console sets and silent & mini-auction donations to Room 100.** Convention Office closes at 5 pm.
- 7:00 pm - Convention Chairman's Reception. Upstairs Banquet Room.
Silent Auction - Refreshments - Cash Bar. **Registration Required.**

FRIDAY - June 22nd

- 9:00 am - "Coffee with Cambridge" at the Museum. **Registration Required.**
Registration packets available for pick up at Museum.
- 11:00 am - Convention Office Opens. Registration packets available for pick up in Room 100. **Bring console sets and mini-auction donations to Room 100 before 2 pm.** Convention Office Closes at 7 pm.
- 12 noon - Slide Programs begin.
- 4:30 pm - Book Sales Opens - Room 101. Closes at 7 pm.
- 5:00 pm - Antique Show Opens - **Ticket Required.** Closes at 8 pm.
Console sets on display in Room 100 - now until 2 pm Saturday.
- 8:00 pm - Opening Session - Upstairs Banquet Room. **Ticket Required.**
Cash Bar - Dinner - Announcements - Mini-Auction.

SATURDAY - June 23rd

- 5:00 am - Dealer set up at Flea Market. **Admission Fee** for non-dealers.
- 6:00 am - Flea Market Opens - Buckeye Trail High School, Old Washington.
Admission Fee.
- 8:00 am - Buffet Breakfast - Upstairs Banquet Room. **Ticket Required.**
- 9:15 am - Saturday Morning Program
Guest Speaker: **Lynn Welker.** Topic: "Cambridge Cordials"
- 11:00 am - Antique Show reopens. Closes at 5:30 pm.
Book Sales reopens - Room 101. Closes at 5 pm.
Convention Office reopens - Room 100. Closes at 4 pm.
- 12 noon - Slide Programs Resume.
- 3:00 pm - Annual "Show & Tell" Program - Location to be announced.
Bring your interesting items for discussion and identification.
Leader: **Lynn Welker.**
- 6:30 pm - President's Reception - Banquet Room Upstairs. Cash Bar.
- 7:00 pm - Annual National Cambridge Collector's Banquet. **Ticket Required.**
Guest Speaker: **James W. Bryan,** President, Bryan Crystal Inc.
Topic: "America's Elegant Glassware: Comparisons Between Yesterday and Today"

SUNDAY - June 24th

- 8:00 am - Buffet Breakfast - Upstairs Banquet Room. **Ticket Required.**
Annual Meeting of N.C.C., Inc. to follow breakfast.
- 11:00 am - Antique Show reopens. Book Sales reopen. Both close at 4 pm.
- 1:30 pm - Former Cambridge Glass Company Employees' Reunion.
N.C.C. Museum. **Bill Smith** Coordinator.

1990 CONVENTION

A Letter From Your Chairperson

MARYBELLE MOOREHEAD

Enclosed with this issue of the CRYSTAL BALL, is your Convention Registration Form. As you can see, the deadline for returning this form is June 9th. Please return your Registration Form as quickly as possible. We need all the time we can get, in order to make name tags, and prepare your registration packets. These packets will be ready for you to pick up, beginning at 10 am, Thursday, June 21st, in Room 100, at the Shenandoah Inn, Old Washington, Ohio.

As you can see, Registration is required in order to attend any of our Convention functions. But, registration is also a bargain for you, in that it affords you unlimited admission to the Antique Show the entire weekend, and there is no extra charge to attend the Thursday Night Party and the Friday Morning Coffee at the Museum. Since there will be light refreshments served at both of these functions, we do need to know how many of you plan to attend. Please be sure to mark your registration form accordingly.

If it should happen that everyone you register does not plan to attend all functions, would you please list the name of the person attending, by name. For example: John & Mary Doe register and plan to attend all functions together, with the exception of the Saturday morning breakfast, which Mary will attend, but John wants to sleep in! Please, under "How Many" put a 2 for each function you will both attend, and for the Saturday Breakfast list: "1 (Mary)." This will be a big help to the person making out the name tags. Thanks!

Don't forget that we will need help at the Antique Show ticket sales table and possibly in the book sales room. Book sales will be in Room 101, again this year. Some of you missed having this table in the hallway last year, but since we no longer have a Display Room, it is much more comfortable for those involved to be in an air-conditioned room rather than to have to sit in the hot hallway. Please be sure to visit the book sales room, as there will be many items to purchase, including books and the CRYSTAL BALL binders. Also, you can pay your dues, order back issues of the C.B., etc., all weekend.

As I have been mentioning the last couple of months, we need donations for both the Silent Auction on Thursday night and the Mini-Auction on Friday evening. Please bring these donated items and the console sets to be used on the Banquet Tables Saturday evening, to Room 100, early in the day, both Thursday and Friday.

Friday morning during our Coffee at the Museum, Sid Garrett (former glass cutter for the Cambridge Glass Company) will conduct a Glass Cutting Exhibition in the storage building in back of the Museum. He did this for us last year, and it was well attended and greatly appreciated. You won't want to miss seeing this educational demonstration.

CONVENTION SPEAKERS

Our Saturday Breakfast speaker will be Lynn Welker. He is well known in the glass collecting world for his expertise on glass of all makes, but especially Cambridge. His topic will be: "Cambridge Cordials."

As announced last month, our Saturday Banquet speaker will be James W. Bryan, President of Bryan Crystal Inc., Sharon, PA. His topic is: "America's Elegant Glassware: Comparisons Between Yesterday and Today."

I feel sure you will want to be there to hear each of these interesting and well informed speakers. It is hoped that we will have photo's and more complete resumes on each of these men, to share with you in next month's C.B. See you in June! MARYBELLE

CONVENTION CHECKLIST

June 9th - DEADLINE for return of Convention Registration Form.

June 15th - Ballots must reach N.C.C. by this date, to be counted. Please be sure to read the resumes for each nominee and cast your vote for the person you believe will do the best job for the club.

Be sure to pack and bring your Console set(s) in pink (if possible, otherwise crystal); and donations for the Silent and Mini-Auctions.

COME PREPARED TO HAVE FUN!

NOMINEES FOR BOARD

Your 1990 Nominating Committee presents for your consideration, the following resume for each nominee seeking to be elected to your Board of Directors. The three (3) elected will serve on this Board for the next four (4) years, until 1994. They are listed here alphabetically. Please follow the instructions on your Ballot (attached to this issue of your Cambridge CRYSTAL BALL) in casting your vote.



JUDITH L. MOMIROV: Judy became a member of N.C.C. in November 1986. She was appointed to the Board of Directors in 1988 to serve until June 1989. She is presently serving as a member of the Museum Non-Glass Items committee, and has volunteered many hours in the storage building, cleaning molds and gages. She served on the 1988 Convention committee, the Banquet Table Flowers committee, and the Decoration committee for the Friday night reception. In 1989 she served on the committee which set up and conducted Tours of Coach House Manor, the former

A.J. Bennett Mansion; and in February 1990 she was a representative of N.C.C. during the "Cambridge Showcase" held at Salt Fork State Park. She is a member of, and contact person for, the Cambridge Cordials Study Group.

Judy was born in Canton, Ohio in 1954, and is a graduate of Canton South High School. She received her BA in Education from Bowling Green State University, and her MA in Education from the College of Mount St. Joseph (Ohio).

She is single and makes her home, along with her pet labrador, Shadow, in Cambridge. She is currently employed as an English teacher for the East Guernsey Local Schools, Old Washington, Ohio. She teaches 11th grade American Literature and 9th grade English. She has been England Trip co-coordinator; Spring play co-director; 7th & 8th grade Student Council Advisor; and Washington, D.C. Trip coordinator. She has also taught English as a second language to migrant students in Otsego Local School, Bowling Green, Ohio.

Judy is currently a member of the NEA; OEA; and EGLTA (East Guernsey Local Teachers Association). She has served EGLTA as secretary, treasurer for several years, vice-president, and president for two years.

Aside from her interest in collecting Cambridge glass, Judy is also a Red Cross volunteer. She is a member of the Ninth Street Methodist Church where she has served as a Lay leader and is a member of the Administrative Board. She is a member of Delta Kappa Gamma (a teacher honorary society and service organization), and has served on various service oriented committees.



MARK A. NYE: Mark became a member of N.C.C. in August 1978 and holds membership #1167. He was instrumental in forming Study Group #3, the Florida Everglades, and under his leadership they created a slide presentation on "Cambridge Caprice." He has been a regular contributor to the Cambridge CRYSTAL BALL, for many years. Mark was Banquet speaker at the 1985 Convention. He was first elected to the Board of Directors in 1986, the same year he was the Saturday Morning speaker. He then served two years as vice-president and convention chairman and in 1988 was elected

President and agreed to be the 1989 Convention chairman. In June 1989, Mark was once again elected by the Board to serve as president.

In addition to serving as a Board member and officer, Mark is the author of the authoritative book "Cambridge Stemware," and compiled and edited "Cambridge Rose Point," a

comprehensive book on the most popular of the Cambridge etchings.

A native of northern New York State, Mark has resided in Miami, Florida for the past 22 years. He is employed by Baxter Healthcare Corporation, Dade Division, where his current position is Manager, Postmarket Surveillance.



WILLIAM C. SMITH: Bill became a member of N.C.C. soon after its formation in 1973 and is member #66. He has served on the Board of Directors since 1974. He has held the office of vice-president (1 year); president (5 years); and treasurer (completing his 10th year). Currently, he also serves N.C.C. as their Public Relations representative; as chairman of the Project committee; and as a member of the Museum Acquisition committee. Over the years, he has worked with most, if not all, committees.

Born in 1928 near Cambridge, Ohio, Bill is a 1946 graduate of Cambridge High School. He worked summers 1942-43 as Carry-in Boy at the Cambridge Glass plant, where his father was a full-time employee.

He and his wife Phyllis were married in 1951, and are the parents of two adult sons, one "daughter" (in-law), and two grandchildren. They reside in Springfield, Ohio. Bill retired as a Manager, from Ohio Bell in 1984, after nearly 30 years service.

A Navy veteran of the Korean conflict, Bill is a member of the Central Christian Church and a 32nd degree Mason. He has devoted many years working with the Boy Scouts of America and was awarded the Tecumseh Council's Silver Beaver Award. He is a member of the Miami Valley (Ohio) Study Group and belongs to a majority of the other glass clubs.



MARLENE K. SNYDER: Marlene joined N.C.C. in September 1979 and became member #1552. She was elected to the Board of Directors in 1986. She and her husband Harold, have been regular in their attendance at all club functions. They are serving jointly as chairmen of the 1990 Flea Market to be held Saturday, during Convention. They also cleaned the gage holder in the Museum storage building. Their interest in Cambridge glass includes the Nudes, in all colors, as well as items in pink and green to match the many sets of Haviland china that they collect.

Born in Wadsworth, Ohio, in 1946, she has lived the majority of her life in Marshallville, Ohio, where she and her family reside in her grandparents old home place. She and Harold were married in 1965 after they both graduated from Smithville High School in 1964.

They are the parents of five children, four girls (ages 24, 22, 21 & 20) and a son age 12. They also have three grandchildren, Jeremy, Andrew and Courtney. Marlene is a homemaker with a full time job at Buehlers, in Orrville, Ohio, as a grill cook in the restaurant. Also, for the past eight years she has worked as an Independent Beauty Consultant for Mary Kay Cosmetics.

In her spare time this year, she is busy planning her daughter's wedding in September, where she is doing all the flowers. Also in her spare time, what there is left, she enjoys reading, fishing, and collecting antiques.

She has served as a Girl Scout leader and Cub Scout leader in the past. Marlene and her family are members of the St. John's Luthern Church.

CAMBRIDGE -- THE FIRST YEARS

PART II

by MARK A. NYE

Last month we halted at December 1904, the saga dealing with early Cambridge production. That was as far as I had reached in the review of trade journals during my visit last fall to the Corning Museum of Glass and the Rakow Library. This month we resume the story, now using trade journal information obtained by other researchers some years ago. Except where indicated, all quotes continue to be from Crockery and Glass Journal.

05/--/05 "Some splendid tableware was shown by the Cambridge Glass Company at their fine new plant at the Monongahela House last January, resulting in a good demand for 'Near Cut,' which has held up quite well. Mr. Arthur Bennett is a man of ideas and energy, who is capable of creating business even in dull times." Glass and Pottery World

09/14/05 "The Cambridge, O., Glass Co. started their third furnace this week, and business is reported moving successfully."

12/20/05 "The Cambridge Glass Company, with its 'Madaline' line of table ware, is sure that it will be at least different from anything to be shown in Pittsburg. It resembles the best things in cut glass, but the makers of 'Near Cut' ware are creators, not copyists. The original plain blank was cut from designs suggested by Mr. Bennett and when shown as a piece of rich cut glass was still further improved before the molds for pressed goods were made. In weight, color and graceful color, it even excels the 'Marjorie' goods made so popular last year under the vigorous selling methods adopted at Cambridge, Ohio." Glass and Pottery World

01/--/06 "Our 'MARJORIE' DESIGN, NEAR-CUT, for season 1905 has not yet been equalled in design, brilliancy and finish, and remains unequalled as a seller and profit-maker BUT we shall present an entirely new design for 1906 which is of a novel style of cutting, and which must create a field of its own. It is ORIGINAL, has CHARACTER and STYLE, and is a success from the start.

Compare it with any other and you will buy it." China, Glass and Lamps

04/--/06 "Near Cut Glass -- Clear Cut Booklet. No better booklet has ever been gotten out for the trade than the ten-page illustrated price list devoted to the Lotus Line of pressed table ware made by the Cambridge Glass Company, of Cambridge, Ohio. The dealer is often confused by the many good designs now offered him. The cuts shown of this easy rapid selling line are in excellent taste and have an originality all their own. It is not strange that the ware obtained the highest premium award at the St. Louis World's Fair. 'Nearcut' glass 'Name on every piece' is made exclusively by the Cambridge Glass Company. Manager Bennett, formerly a successful salesman and always resourceful and progressive, puts out a book which you are sure to keep if you get it. Its easy to get and the splendid goods are easy to sell. Plenty of Green Book readers know that to be true." Glass and Pottery World

05/--/06 "The Lotus Line of tableware has proven to be all that the Cambridge Glass Company claimed for it, and the sales have been excellent, considering the somewhat dull market which has prevailed during April and May."

08/23/06 "The Byesville Glass Co. has shut down indefinitely, and the factory is now for sale. It was built some six years ago by Chas. L. Campbell and Jno. C. Beckett of Cambridge, O., and Mr. Brudewald was general manager. It started on lamps, but did not make a success and went into bankruptcy. It was sold in 1904 to Mr. Schott, the present owner. He made shades and globes and operated the factory up to the close of the last fire. He now quits the business."

12/06/06 A full page advertisement appeared in the 1906 Holiday issue of Crockery and Glass Journal. It included an illustration of the plant, a candy jar, and listed the patterns Marjorie, Dorothy, Paul Revere, Sunburst and Fernland.

01/--/07 In early January, a Cambridge advertisement was saying: "We operate the most complete and up-to-date factory in the United States. Our capacity is upwards of half a million dollars. For quality and finish we are in the lead, for variety and assortments we can offer everything in Pressed or Iron Mold Blown Ware made from High Grade Pot Glass. We Make Bar Glassware, Candy Trays, Candy

Jars, Show Jars, Tableware, Tumblers, Cup-foot Stemware." Probably China, Glass and Lamps

03/23/07 "One of the worst floods in the history of the Guernsey Valley visited the Cambridge, O., district last week. Thursday Evening about 6 o'clock the water got in the producers at the Cambridge Glass Co.'s plant and put the fire out, causing the factory to close down for the balance of the week. On Wednesday night the entire portion of the glass plant addition known locally as the 'desert,' became flooded and the employees living in the section were unable to get to work Thursday morning. Some of the glassworkers had the greater part of their furniture ruined by water. The Cambridge Glass Co.'s plant, barring the short lay-off mentioned above, is running steadily with all three furnaces in operation." China, Glass and Lamps

06/06/07 "The Cambridge Glass Co. has added a patented cigar jar of Colonial design to their line. At the top of the jar is a spongeholder so arranged that moisture comes from the entire sponge instead of just a part. The jar will hold fifty cigars. Samples have been forwarded to the various agencies. A new iced tea tumbler has also been added to the #2630 Colonial line."

09/12/07 "The Cambridge Glass Co. have just placed a new twelve inch punch bowl on display in their Pittsburgh salesrooms. It is shown in three shapes. The bowl is part of the Paul Revere Colonial line which has been such a success with this factory. A new ten inch punch bowl of the Feather cut line has also just been issued by the firm. This is shown in four different shapes."

12/05/07 The 1907 Holiday issue of Crockery and Glass Journal carried a full page Cambridge advertisement in which was illustrated the Ribbon handled celery and the Wheat Sheaf tankard and told readers to "ask for catalogs showing our new 1908 lines."

01/09/08 "Charles S. Rockhill is in charge of the display of the Cambridge Glass Co. Their new table pattern is known as 'Near-cut Ribbon No. 2653,' while a new stem line is called 'Near-cut Star No. 2656.' Both are good, and are bound to prove popular with the trade."

04/02/08 "The purchasers of the Byesville, O., glass plant were D. Shively & Co., of Cambridge, O. The price was about \$125,000."

05/07/08 "The 'Merry Widow' has invaded the glassware trade in the shape of a vase made by the Cambridge (O.) Glass Co. Like the dame herself, it is graceful and attractive."

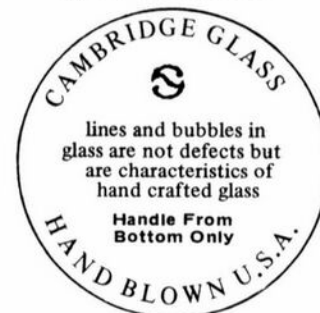
06/25/08 "A new footed ice cream is the latest creation of the Cambridge Glass Co. and samples have been forwarded to all resident agents. It is a piece of the famous Colonial line of this firm. The factory is running on good time, and business is improving steadily."

10/03/08 "Cambridge, O. Reports state that the Cambridge Glass Works are still running with 40 shops working at the furnaces, including one caster place shop, four iron mold shops and 35 press shops."

to be continued

IS IT CAMBRIDGE ?

by J. D. HANES



In the last year, the club has received approximately eight letters concerning a Cambridge label on glassware. The label in question is illustrated above. As you can see, it is round and does not have the scalloped type edge as the original Cambridge label. Also, the background of the label is gray and the lettering is white. **This is not the Cambridge Glass that we collect!**

This glass was made by Super Glass, Inc., of Brooklyn, N.Y., in the 1970's. They did produce it at the old Cambridge factory, but that is the only connection that it has. None of their items were made from old Cambridge molds or patterns. Mostly this glass was sold in furniture and department discount stores. A lot of the items were large, decorator pieces.

I hope that this will help keep everyone alert for these items. Remember, one of the best ways to stay alert is to study your books and read the CRYSTAL BALL.

Study Club News

STUDY GROUP #7 - EASTERN OHIO "THE CAMBRIDGE BUFFS" Phone: 614/432-5230

The Cambridge Buffs Study Group held their meeting March 10th, in the home of Rich and Sally Bennett. There were eight members and two guests present.

Rich had us play a "Guessing" game on prices we would put on certain articles of glassware. He then showed a slide presentation on Lotus and Cambridge Glass.

"Show & Tell" items included: an ebony vase with the Gloria etching in sterling silver; a 5-1/2" apple in crystal with Rosepoint etching and a carmen stem; a Near Cut #2636 8-3/4" bowl; an emerald green Inverted Thistle berry dish with gold decoration; Near Cut #2504 and #2629 berry bowls; a Daisy pattern salt; a green carnival Inverted Strawberry powder box; and a marigold carnival Inverted Strawberry vase.

Next meeting at the home of Deanne and Thomas Gray.

submitted by Deanne Gray

STUDY GROUP #13 - SOUTH WEST OHIO "MIAMI VALLEY, OHIO"

Our meeting was called to order at 7 pm, March 13th, by President Wollenhaupt. Our old business consisted of discussion about items for our money making project during the convention. We now have two items for this project. Bill Smith asked if any study club members would be interested in helping to work on a new price guide for both the 1930-34 and the 1949-53 catalog reprints. Collector Books has indicated that they would like to reprint these catalogs, but need the price guide update.

Frank Wollenhaupt stated that he has seen the low Ram's Head (Gadroon) candlesticks decorated with hand painted pink roses. They appear to be a Fenton production item. The candlesticks were ebony.

Our program was Smoker items. We had over 40 items, ranging from the Near Cut era thru

the plant reopen period. Our next meeting will be on the Cambridge color green.

"Show & Tell" items were: crystal Chelsea footed punch cup; 12 oz. crystal tumbler, cut Wedding Ring; dark emerald Gyro Optic pitcher; pistachio Caprice luncheon plates; light emerald syrup, etched Cleo; amethyst Nautilus decanter w/tumblers; pair of Mosser cobalt candlesticks; oval crystal flower frog, unknown maker; milk glass Mt. Vernon cordial; crystal mayonnaise ladle; Morgantown or New Martinsville set of cocktails; 5-part divided relish, pink, etched Apple Blossom.

submitted by Vicki Wollenhaupt

STUDY GROUP #14 - CAMBRIDGE, OHIO "THE CAMBRIDGE CORDIALS" Contact person - Judy Momirov Phone: 614/432-2897

The Cambridge Cordials held their meeting, March 17th, in the home of Lorraine and Kevin Weinman. There were eight members and two guests present.

Our program revolved around our guest, Don Frontz, who was a gatherer at the Cambridge factory. (see related article on page 3)

Items for "Show & Tell" were: a Rosepoint etched apple with carmen stem; a nearcut Buzz Saw pitcher; a Sea Shell #18 3-toed bowl in Tahoe Blue (?); #1282 8" vase with crystal foot and amber optic top.

Our next meeting will be held on April 21st.
submitted by J. D. Hanes

ATTENTION

PRICE INCREASE for C.B. BACK ISSUES

The price for back issues of the Cambridge CRYSTAL BALL was increased during the March 2nd Quarterly Meeting.

All back issues are available to members ONLY for the price of: \$1 each or 12 issues for \$10.

The following four pages are reprinted from the 1906 Cambridge Glass Company catalog. These pages represent the entire #2579 Ware Line in production at that time.

No. 2579 Ware.

SCALE, HALF SIZE.



8 inch Banquet High Foot Bowl.
Packed 2 dozen in a barrel.



7 1/2 inch High Footed Fruit Bowl.
Packed 2 1/2 dozen in a barrel.



Spoon.
Packed 11 dozen in a barrel.



Cream.
Packed 10 1/2 dozen in a barrel.

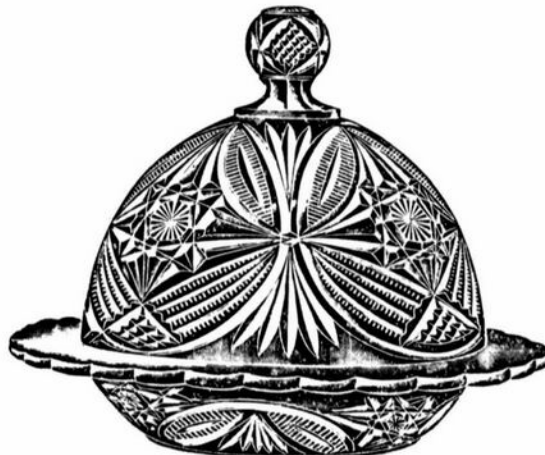
Sets packed 1 1/4 dozen in a barrel.



Sugar and Cover.
Packed 6 dozen in a barrel.



4 inch Nappy, D Shape.
Packed 22 dozen in a barrel.



Butter and Cover.
Packed 4 1/4 dozen in a barrel.



4 inch Nappy, C Shape.
Packed 18 dozen in a barrel.

No. 2579 Ware.

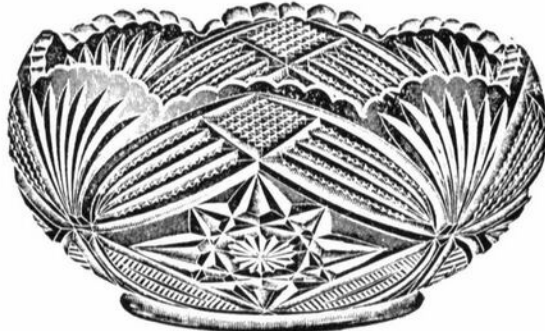
SCALE, HALF SIZE.



4 inch Nappy, A Shape.
Packed 26 dozen in a barrel.



9 inch Salver.
Packed 2 dozen in a barrel.



7 inch Nappy, C Shape.
Packed 3 1/2 dozen in a barrel.



7 inch High Footed Bowl.
Packed 2 1/2 dozen in a barrel.



7 inch Nappy, A Shape.
Packed 5 1/2 dozen in a barrel.



7 inch Nappy, B Shape.
Packed 6 1/2 dozen in a barrel.



7 inch Deep Nappy.
Packed 4 dozen in a barrel.

No. 2579 Ware.

SCALE, HALF SIZE.



No. 2579 Tumbler.
Packed 20 dozen in a barrel.



No. 2579 Quart Jug.
Packed 2½ dozen in a barrel.



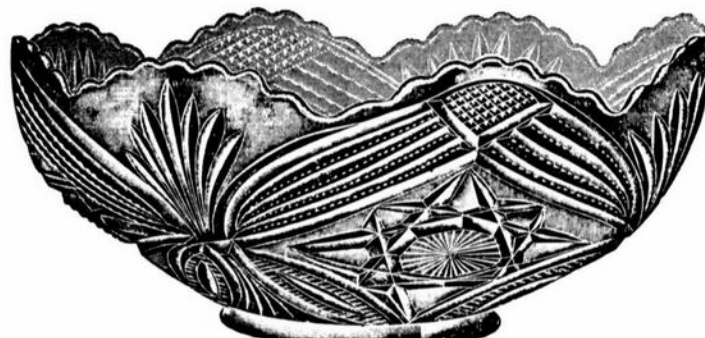
4 inch Nappy, B Shape.
Packed 26 dozen in a barrel.



9 inch Cabaret.
Packed 5 dozen in a barrel.



7 inch Nappy, D Shape.
Packed 5 dozen in a barrel.



7 inch Deep Nappy, Flared.
Packed 4 dozen in a barrel.

No. 2579 Ware.

SCALE, HALF SIZE.



No. 2579 7-Piece Water Set.
Packed 1 $\frac{1}{4}$ dozen in a barrel.



No. 2579 7-Piece Berry.
Packed 2 dozen in a barrel.



National Cambridge Collectors, Inc.

**SPECIAL AIRFARE PROGRAM
CONVENTION & ANTIQUE SHOW
SHENANDOAH INN
OLD WASHINGTON, OHIO
JUNE 21-24, 1990**

USAir has been designated the official carrier for the Convention and Antique Show in June. You are guaranteed the lowest airfare available at time of booking.

OPTION A:

40% OFF

Full coach fares — 7 day advance purchase; no penalty for cancellation.

OPTION B:

5% OFF

Excursion fares (excluding first class). Requires Saturday overnight stay and payment 24 hours after reservation or two weeks in advance of departure (whichever comes first). Non-refundable should cancellation be necessary.

PROGRAM INCLUDES:

- ◆ Fares in effect for early or extended stay in Cambridge—June 18-27, 1990
- ◆ Major credit cards accepted
- ◆ Personalized travel itinerary provided
- ◆ Tickets and boarding passes mailed direct
- ◆ \$150,000 flight insurance provided at no charge
- ◆ Car rental discount program (see registration information)

Travel arrangements by:



The Ohio Automobile Club
90 E. Wilson Bridge Rd.
Worthington, Ohio 43085

**RESERVATION HOTLINE
1-800-937-8687
ASK FOR CAMBRIDGE
COUNSELOR**

USAIR

THESE COLLECTIONS ARE FOR SALE

SPOONS	CAMERAS	SOUP LADLES
RELIGIOUS MEDALS	CRUCIFIXES	ANTIQUÉ JEWELRY
POST CARDS	SALT & PEPPERS	KEYS.....TOYS
LADIES COMPACTS	VICTORIAN CRYSTAL	BELLS
CIGARETTE CASES	AUTO MEMORABILIA	THIMBLES
ICE FLCKS	ANTIQUÉ TOOLS	EYE CUPS
WRIST WATCHES	RULERS	VICTORIAN SILVER
COINS	DEPRESSION GLASS	TRAINS
SAFETY RAZORS	BADGES	LETTER OPENERS
STILL BANKS	SHAVING MUGS	MILITARY RELICS
SHOE HORNS	FOUNTAIN PENS	AVON ITEMS
MILITARY MEDALS	PEN KNIVES	FIRST DAY COVERS
PAPER MEMORABILIA	MECHANICAL PENCILS	POCKET WATCHES

CHARLES MIKULIK BOX 416 ELIZ., NJ

N.C.C., Inc., FLEA MARKET

SATURDAY - JUNE 23, 1990
6 am - 12 noon

BUCKEYE TRAIL HIGH SCHOOL
In the heart of downtown Old Washington

For contract or additional information
write to: Flea Market Chairmen,
Marlene & Harold Snyder,
P.O. Box 416, Cambridge, OH 43725,
or phone: 614/432-6794.

L. A. MANESS

RT. 1, BOX 552, ASHLAND, VA 23005
(804) 798-1825

C = MARKED P & I \$3 CTN.

Cascade sherbet (8) each	\$ 11
Mt. Vernon 10 oz. ftd. tumbler (6) each	12
Tally-Ho salad dressing bowl 2-part, amber	25
<u>Decagon</u>	
Cleo etch, sugar w/sterling base 5-1/4" bowl, green, C	23 5
Cup & saucer, green (4) set, C	15
Plate 8", green (3) each	10
<u>Pristine</u>	
Cup & saucer, green (2) set, C	12
Plate 8", green (4) each, C	10
Plate 8", pink (8) each, C	10

VISA/MASTERCARD WELCOME

— Classified —

FOR SALE: #3122 Diane etched: 7-1/4" gob-
lets (11); 5" juices (12); sherbets (8); 6-1/4"
underplates (5). Make offer. Barbara Jennings,
134 Garden Parkway, Henrietta, NY 14467.
Phone: 716/334-5066.

FOR SALE: "Farber Brothers Krome-Kraft a
Guide for Collectors" by Sferrazza - \$16.95
ppd. 1941 Farber Brothers Catalog Reprint w/
free price guide - \$10.95 ppd. Both books -
\$25.00 ppd. Ben's Books, P.O. Box 5301, North
Branch, NJ 08876. NJ residents add sales tax.

WANTED: Marjorie #7606 pattern. Serving
pieces, 8 oz. goblets, 10 & 12 oz. tumblers.
Marjorie Kleemann, 5013 Greenbrier Drive,
McHenry, IL 60050.

FOR SALE: Order from N.C.C. "Cambridge
Rose Point" w/price guide, by Mark A. Nye.
\$12.95. Add \$1 S&H & Ohio residents 78¢ tax.

Stage Coach
Antique Mall

WELCOME TO CLASS COUNTRY!



RT. 40 ONE-HALF MILE WEST OF I-70 EXIT #164
MANY DEALERS - WIDE SELECTION - PLENTY PARKING

WE FEATURE GLASSWARE OF:
CAMBRIDGE, HEISEY, FENTON, & FOSTORIA
Plus Art Pottery & a General line of Antiques

DORIS AND ROY ISAACS
BUY AND SELL
614-872-3720



7525 EAST PIKE
NORWICH, OHIO 43767

MON THRU SAT 10-5:30 SUN 12-5:30
SUMMER EVENING HOURS BY CHANCE

SPRINGFIELD

Antique Show & Flea Market

Clark County Fairgrounds

SPRINGFIELD, OH

Exit 59 on I-70

400-800 DEALERS

INSIDE AND OUTSIDE

Ohio's largest year round show with an emphasis on quality antiques

9:00 AM - 5:00 PM

Admission \$1.00

Children under 12 FREE

NEXT SHOW

MAY 18, 19 & 20, 1990

Extravaganza

1990 SHOW DATES

JUNE	16-17	Inside & Outside
AUGUST	18-19	Inside & Outside
SEPT.	14-15-16	Extravaganza
OCT.	20-21	Inside & Outside

BRUCE KNIGHT, MGR.

For Information Write
P O Box 2429, Springfield, OH 45501
Phone (513) 325-0053

The DAZE

***SPECIAL OFFER**
to NCC friends \$2. off
the 1 year subscription
price when on this form
or copy of.

The Original National monthly newspaper dedicated to the buying, selling & collecting of colored glassware and china including Depression Glass and the Elegant Glass (Cambridge, Heisey, Fostoria, etc.) We educate and inform you each month with feature articles by top notch columnists, readers "finds", club happenings, show news and a multitude of ads. Find those missing pieces to your 30s, 40s or 50s pattern. Can't identify it? Perhaps we can help "Keep up with what's happening with a subscription to the DAZE. Buy, sell or trade from the convenience of your easy chair.

Name _____ Street _____

City _____ State _____ Zip _____

1 yr \$17 3 yrs \$33 \$2. Single Current Copy

Exp date _____ Card No. _____

Signature _____

Orders to D.G.D., Box 57NC, Otiaville, MI 48463

Please allow 30 days for your first issue - Canadian subscribers, add \$1. per year and subscribe by charge card only! This Special Offer may not be combined with any other special offer.

COLUMBUS ANTIQUE FLEA MARKET

(ANTIQUES & COLLECTIBLES)

Ohio State Fairgrounds - Lausche Building
Off I-71 Exit 17th Avenue - Columbus, Ohio

MAY 13th

Sunday Only - 7 A.M. to 4 P.M.
Show Admission \$1.50 - Under 12 Free
150 QUALITY DEALERS

SELLING Advertising Art Deco, books, Cambridge, clocks, coins, collectibles, Depression glass, dolls, Fiesta, fine early furniture, Heisey, jewelry, lamps, oak furniture, post cards, pottery, good primitives, tools and print shop items



4214 North High Street, Columbus, Ohio 43214
(614) 267-8163 (614) 263-6830 (614) 885-2352

NEXT SHOW: June 24, 1990

TENTH ANNIVERSARY
1980-1990

Fostoria Glass Society

Convention
Show & Sale
of Fostoria & other fine Glassware

Delf Norona Museum
Eighth Street & Jefferson Avenue
Moundsville, West Virginia

FRIDAY, JUNE 8 -- 6:00-9:00 P.M.
Premier Admission \$4.00

SATURDAY, JUNE 9 -- 11:00-5:00 P.M.
Annual Meeting - 9:00 A.M.

AUCTION - 6:00 P.M.

SUNDAY, JUNE 10 -- 11:00-4:00 P.M.
General Admission - \$2.00
(Good for Sat. & Sun.)

Lectures Identifications Films
Books Souvenirs Catalogs

FLEA MARKET

For information call (817) 645-6066
Write: P.O. Box 826, Moundsville, WV 26041



14th ANNUAL NATIONAL IMPERIAL GLASS COLLECTORS' SOCIETY CONVENTION

Stone Crab/Hospitality Inn
St. Clairsville, Ohio

SHOW & SALE

Saturday, June 9 1:00 p.m. to 5:00 p.m.

Sunday, June 10 12:00 noon to 4:00 p.m.

Donation

SEMINAR IMPERIAL THE EARLY YEARS

Speakers: Doug Archer and Richard Ross
Saturday, June 9 11:00 a.m. to 12:00 p.m.
OPEN TO PUBLIC - FREE ADMISSION

FOR INFORMATION, WRITE:
National Imperial Glass Collectors' Society
P.O. Box 534 - Bellaire, OH 43906
or Phone (614) 676-2422 - (614) 676-9827



Old Morgantown Glass Collectors' Guild

FIRST
ANNUAL CONVENTION

and

GLASS DISPLAY

June 19-21, 1990

ERICKSON ALUMNI CENTER
West Virginia University Campus
Morgantown, West Virginia

+ + +

Join us for the 3-day
MID-WEEK ACTIVITIES!

Convention Schedule/Fees and
Motels/Rates will be forwarded by
sending SASE to the address below--

Mrs. L. Biever
Apt. 615 - OMCGG
211 - 2nd Street N.W.
Rochester MN 55901

HEISEY MORGANTOWN CAMBRIDGE
June 14-17 JUNE 19-21 June 22-24



1990



20th Annual Antique Show & Sale Heisey Glass Display

19th ANNUAL CONVENTION
OSUN-COTC Newark Campus
Country Club Drive, Newark, Ohio

Friday June 15 12:00 p.m. to 6:00 p.m.

Saturday, June 16 11:00 a.m. to 5:00 p.m.

Sunday, June 17 12:00 p.m. to 5:00 p.m.

(DISPLAY CLOSING AT 4:00 P.M. ON SUNDAY)

Donation \$2.50

Plenty of Free Parking



GALA PREVIEW THURSDAY, JUNE 14, 1990

Donation \$10.00 Includes Meal

Dinner 5:00 p.m. to 7:00 p.m.

Show 6:00 to 9:00 p.m. Display 7:00 p.m. to 9:00 p.m.

sponsored by

Heisey Collectors of America, Inc.

Benefit National Heisey Glass Museum



FLEA MARKET ON THE SQUARE

SPONSORED BY BUCKEYE STUDY CLUB

Saturday, June 9 Saturday, June 16

Sunday, June 10 Sunday, June 17

Dawn to ???

FOR INFORMATION CALL 614-345-2932

DEALERS



DIRECTORY

NOTE: When writing to the Dealers listed here, please enclose a SASE!

<p>MILBRA'S CRYSTAL MATCHING P.O. Box 363, Rio Vista, TX 76093 Milbra Long 817 / 645-8066 FOSTORIA * CAMBRIDGE * HEISEY * DEPRESSION ERA GLASSWARE BUY and SELL</p>	<p>BENICIA ANTIQUE SHOP 305 First Street Benicia, California 94510 OPEN 11 AM - 5 PM Closed Monday Z. E. LOPES 707-745-0978</p>	<p>THE MUTED SWAN ANTIQUES 5486 Peachtree Rd. Chamblee, GA 30341 Heart of Chamblee Antique Row Specializing in Cambridge, Heisey and Fostoria Bill & Pat Miller 404-451-7620</p>
<p>SANDY'S ANTIQUE MALL 617 Wheeling Ave. Cambridge, OH 43725 Phone 614/432-2570 COLLECTOR'S ITEMS Summer 9 - 6 Daily * Winter 9 - 4:30 Mon - Sat</p>	<p>VISIT HISTORIC BENICIA and its 28 shops Off Interstate #80 North of San Francisco</p>	<p>Elegant Depression Era Glassware ABBA ANTIQUES 1157 Charlie Lane Lilburn, GA 30247 Bill & Barbara Adt (404) 279-1942 Shows, Mail Order, & by Appointment</p>
<p>THE GLASS URN 456 West Main Street, Suite G. Mesa, AZ 85201 602 / 833-2702 Mail Order Shows Open Shop CAMBRIDGE, FOSTORIA, HEISEY, ETC.</p>	<p>ANTIQUES ON THE MALL SPECIALIZING IN CAMBRIDGE GLASS Stagecoach Mall - Bldg. 3 - Norwich, OH Virginia Bennett 614/432-4483 64183 Warne Drive, Cambridge, OH 43725</p>	<p>BERKELEY ANTIQUES 69 Berkeley St., Boston, MA 02116 OPEN: Monday thru Saturday 11 AM to 5 PM GEORGE & FRANK 617/426-1048 DUNCAN, CAMBRIDGE, HEISEY, GENERAL LINE</p>
<p>ETTELMAN'S DISCONTINUED CHINA & CRYSTAL Cambridge a Specialty P.O. Box 6491-CB Corpus Christi, TX 78466 Phone (512) 888-8391 Include S.A.S.E.</p>	<p>D & D ANTIQUES Columbus, Ohio DICK SLIFKO SHOWS ONLY</p>	<p>BUYING COLORED CAMBRIDGE GLASS (Send List with Prices) FEDERAL HILL ANTIQUES 78 Maple Street Bristol, CT 06010</p>
<p>THE GLASS CUPBOARD 39 Shire Oaks Drive Pittsford, New York 14534 Marcia Ellis Cambridge, Duncan Miller (716) 586-7596 Shows, Mail Order, Appt.</p>	<p>JUDY'S ANTIQUES Judy Bennett 422 S. Ninth Street (Corner of Jefferson) Cambridge, Ohio 43725 BUYING Ph. 614-432-5855 SELLING <i>Cambridge Glass my Specialty</i></p>	<p>"HAPPINESS IS" The Stultzs 3106 Warren Court Glen Allen, VA 23060 SHOWS & MAIL 804-672-8102 (RICHMOND AREA) AMERICAN MADE GLASS CIRCA 1890-1960.</p>
<p>"Days of Future Passed" 4 Newbrook Lane, Bayshore, L.I., NY 11706 LYNN DEZMAIN (516) 665-3890 Cambridge, Elegant Glass, D. G., Collectibles</p>	<p>GREEN ACRES FARM 2678 Hazelton Etna Rd., Pataskala, OH 43062 (State Route 310 North) Sat. & Sun. 1-7 PM 614/927-1882 Antiques, Crystal Glass and Collectibles</p>	<p>COSHOCTON ANTIQUE CENTER 309 South 4th Street Coshocton, Ohio 25+ Dealers - Open 10 - 6 (Closed Mon, Winter) Glass Restoration & Chair Caning 614 622-3223</p>
<p>THE HITCHING POST 7467 S. R. 88 Ravenna, OH 44266 Ph. 216-296-3686 D. McDaniel CAMBRIDGE — HEISEY — GENERAL LINE</p>	<p>PATCHES OF VIRGINIA Specializing in China and Glass Virginia T. Houston 34116 Roberts Rd., Eastlake, OH 44095 Phone: (216) 975-8315</p>	<p>CRYSTAL LADY 1819 Vinton St., Omaha, NE 68108 Joann D. Hagerty Bus. (402) 341-0643 Res. (402) 391-6730 Specializing in Elegant Glass & Collectables</p>
<p>JOHN C. WOLFE, JR. Visual Display, Suite S 592 E. Main St., Columbus, OH 43215 CAMBRIDGE, A SPECIALTY VINTAGE WRISTWATCHES</p>	<p>REMEMBRANCES 7597 Daphne Dr., No. Syracuse, NY 13212 Shirley S. Ladouceur 315 / 458-5297 ANTIQUES and COLLECTIBLES MAIL ORDER SHOWS APPOINTMENTS</p>	<p>MARGARET LANE ANTIQUES 2 E. Main St., New Concord, OH 43762 Lynn Welker 614/826-4418 CAMBRIDGE GLASS MATCHING SERVICE Hours Mon.-Fri. 1-5 PM or by Appointment</p>
<p>GLASS RESTORATION BRILLIANT CRYSTAL ELEGANT DEPRESSION DON & LYNNE WORMLAND MT. CLEMENS, MICH. (313) 791-9191</p>	<p>WATKINS (Fine Quality) CAMBRIDGE GLASS SHOP 1429 Marquand Ave. (Corner of Woodlawn) Cambridge, OH (614) 432-4460 Lana Watkins</p>	<p>BUD'S TRADING POST GENERAL STORE — FLEA MARKET 501 Wheeling Ave. Cambridge, OH 43725 10-5 Mon. thru Sat. 614-432-4688 CAMBRIDGE - PATTERN - ART GLASS This Bud's for Y'all</p>

**15th Annual
NATIONAL
CAMBRIDGE
COLLECTORS**

ANTIQUÉ SHOW & SALE
(& 17th Annual Nec. Convention)

SHENANDOAH INN
INTERSTATE 70 - EXIT 186 - 7 MILES EAST OF
CAMBRIDGE, OHIO

JUNE 22, 23, 24, 1990

FRIDAY, JUNE 22nd	5:00-8:00
(PREVIEW ADMISSION \$3.50)	
SATURDAY, JUNE 23rd	11:00-5:30
SUNDAY, JUNE 24th	11:00-4:00
(ADMISSION \$1.00)	

OFFERING CAMBRIDGE AND OTHER FINE GLASSWARE
Including Heisey, Imperial, Fenton, Duncraft, Millin, etc.

**VISIT YOUR MUSEUM
of
CAMBRIDGE GLASS**

ATTENTION --- NEW MUSEUM HOURS

Wednesday thru Saturday - 10 AM to 4 PM
Sunday - 12 noon to 4 PM
Closed Monday & Tuesday - Easter & July 4th



HAPPY MOTHERS DAY

MAY 1990

Flower — Lily of the Valley • Birthstone — Emerald

National Cambridge Collectors, Inc.
P. O. Box 416 Cambridge, Ohio 43725

FIRST CLASS MAIL
U.S. POSTAGE
PAID
So. Vienna, Ohio
45369
Permit No. 15

FIRST CLASS MAIL

Membership Renewal Notice

This is your **last** issue of the *Crystal Ball*—if the date on your address label reads 5-90.

Please renew now!