



Cambridge Crystal Ball

Published monthly by the National Cambridge Collectors, Inc.
to encourage and report the discovery of the elegant and boundless product
of the Cambridge Glass Company of Cambridge, Ohio

Issue No. 204

April 1990

From The President's Desk

TRAVELS WITH YOUR PRESIDENT

Tuesday Evening - home from work, eat a quick meal and to the desk to finish a report for work that is due before I leave tomorrow for Cambridge and the annual auction. The report is finally finished and printed by 10 pm, there is still packing to do, preparing the house for my four day absence, and sometime between then and dawn, sleep. Everything is done shortly after midnight and sleep comes quickly.

Wednesday Morning - comes very quickly and after a cup of coffee and a skim through the morning paper, I am out in the yard watering, since we are on water restrictions and can only water three days a week, between the hours of 4 to 8 am! Once the watering is finished, it is time to shave, shower and dress for work. Then comes the usual battle with rush hour traffic (where did some of these people learn to drive, or is it they never did learn how, but are doing it anyway?) for the relatively short drive to my office. Arriving at work shortly after 8 am, the report is turned in, a brief meeting with my boss follows and it is back to my desk. I have arranged for a noon shuttle pickup at my house and decide I should leave work not later than 11:15. Based on prior experience I start to leave shortly before 11 and, as is usually the case, it was just 11:15 am when I got away. Luckily the trip home was uneventful and quick since I had only been home ten minutes when the shuttle arrives early! Not to worry, he will wait, but would he have waited had I not been home, that is the question?

Wednesday Noon - or shortly thereafter, we arrive at the airport. Since I have not eaten lunch, and an hour remains before my flight leaves, I decide to eat at one of the small food stands in the terminal. As always, the prices are high and the sandwiches are mediocre, at best. My flight departs on time at 1:30 pm.

Wednesday Afternoon - arrive in Atlanta on schedule, find the gate from which the flight to Columbus will depart, and indulge in a cup of ice cream, which is also over priced, but at least it tastes good. Things are going well and we depart on schedule.

Wednesday Evening - we arrive in Columbus right at sunset and the ground below is lighted with the last rays of sunlight as we make our final approach to the runway. Once off the plane it is time to get the sweater and jacket out of the luggage, because somewhere between South Florida and Central Ohio there has been a change in the weather! I get my rental car, and still on schedule, leave for Cambridge, shortly before 7 pm. I might add, it is a shock, during the winter, and after leaving Florida, when you leave the confines of the Columbus airport and step outside to await the shuttle bus to the rental car lot. Nothing can prepare you for the first blast of frigid air. The drive to Cambridge is routine, the roads are bare and it is a clear night. I arrive at the Shenandoah Inn around 8:30 pm, check in, and go eat. After returning to my room, I fall asleep, rather early for me.



continued on page 14

Cambridge Crystal Ball

Official publication of National Cambridge Collectors, Inc., a non-profit corporation with tax exempt status. Published once a month for the benefit of its members.

Membership is available for individual members at \$15 per year and additional members (12 years of age and residing in household) at \$3 each. All members have voting rights, but only one *Crystal Ball* will be mailed per household.

Back issues of the *Crystal Ball* are available (beginning with Issue No. 1, May 1973) for members only. Cost: \$1.00 each or 12 issues for \$10.00.

1989-90 Officers & Committee Chairpersons

President	Mark A. Nye
Vice-President	Cynthia A. Arent
Secretary	J.D. Hanes
Treasurer	William C. Smith
Sergeant-at-Arms	Marlene K. Snyder
Acquisition	Mark Nye, Lynn Welker, Bill Smith, Joy McFadden, J.D. Hanes
Budget & Finance	David B. Rankin
By-Laws	J.D. Hanes
Membership	Phyllis D. Smith
Museum—Facilities	Willard P. Kolb, Doyle Hanes
Museum—Interior	Lynn Welker, Janice Hughes, Marybelle Moorehead
Non-Glass Items	J.D. Hanes, Cindy Arent, Judy Momirov, Marlene Snyder
Nominating	Willard P. Kolb
Program	R. Clarke West
Project	William C. Smith
Public Relations	Bill & Phyllis Smith
Publicity	Cynthia A. Arent
Study Group Advisor	Phyllis D. Smith
1990 Auction	Lynn M. Welker
1990 Antique Show	Joy R. McFadden, Mary Beth Hackett
1990 Convention	Marybelle Moorehead
1990 Flea Market	Doyle C. Hanes
Crystal Ball Editor	Phyllis D. Smith

Classified Advertising Rates

10 cents per word \$2.00 minimum
We cannot mix type size in classified advertisements. Abbreviations and initials will count as words. Payment in full must accompany all ads.

Display Advertising Rates

(Camera-ready ads preferred)	Members	Non-Members
1/8 page	\$ 6.00	\$10.00
1/4 page	10.00	15.00
1/2 page	18.00	25.00
3/4 page	25.00	35.00
Full page	33.00	45.00

Dealers Directory

Five-line maximum \$18.00 for 12 months

Cambridge *Crystal Ball* assumes no responsibility for items advertised and will not be responsible for errors in price, description or other information.

Advertising copy, articles, club news and notices must be in our hands by the 10th of each month to assure publication in our next issue.

Paid advertisements containing reproductions or new glass will not knowingly be accepted for publication.

Opinions or information stated in any signed article or letter printed in the *Crystal Ball* are those of the authors and may or may not agree with National Cambridge Collectors, Inc. The Editor reserves the right to refuse and to edit any material submitted for publication so as to conform with the editorial style of the *Crystal Ball*.

Please Address All Correspondence to:

National Cambridge Collectors, Inc.
P.O. Box 416 Cambridge, Ohio 43725
President — Mark A. Nye, 305/221-0343
Secretary — J.D. Hanes, 614/432-6794
Editor — Phyllis Smith, 513/323-3888

Please notify us immediately of any change in your address.

Please enclose an SASE when requesting information.

CAMBRIDGE GLASS BOOKS FOR SALE

by National Cambridge Collectors, Inc.

* **COLORS IN CAMBRIDGE GLASS**
(128 pages - 60 color plates - fully indexed)
Hardbound with Price Guide \$19.95

* **1930-34 CAMBRIDGE GLASS CO. CATALOG REPRINT**
(250 pages) *Out of Print* catalog
Hardbound with Price Guide \$14.95

* **1956-58 CAMBRIDGE GLASS CO. CATALOG REPRINT**
(164 page reprint of original catalog)
Paperback \$6.95

1985 COMBINED PRICE GUIDE
for 1930-34 & 1949-53 catalog reprints Postpaid \$5.75

*NCC MEMBERS ONLY: These publications are available at 10% discount

by Bill & Phyllis Smith

CAMBRIDGE GLASS 1927-1929
(66 page reprint of original catalog)
Paperback with Identification Guide \$7.95

by Cambridge Buffs Study Group

NEARCUT
(108 page reprint of 1910 Cambridge Catalog)
Paperback with Price Guide \$9.95

by Mary, Lyle and Lynn Welker

CAMBRIDGE GLASS CO.
(120 pages of reprint from 8 old catalogs)
Paperback \$6.95

CAMBRIDGE, OHIO GLASS IN COLOR II
Spiralbound \$5.95

by Harold and Judy Bennett

1903 CAMBRIDGE GLASS CO. CATALOG REPRINT
(106 page reprint of an original catalog)
Paperback \$7.50

Address your orders to:

BOOKS
National Cambridge Collectors, Inc.
P.O. Box 416
Cambridge, OH 43725

Please add \$1.00 (P & I) per order.
(Not required for Price Guide)

Ohio residents please add 6% state sales tax.

DEALER DISCOUNTS AVAILABLE - PLEASE WRITE!

NCC Museum of Cambridge Glass

The museum is located on U.S. Route 40, one-eighth mile east of I-77 near Cambridge. Hours: 10 a.m. to 4 p.m. Wednesday through Saturday, 12 noon to 4 p.m. Sunday. (March through October)
Closed: Monday & Tuesday
Easter and July 4th.



'Cambridge Showcase' will help Museum

by J. D. HANES

On February 10th, the first ever "Cambridge Showcase" was held at Salt Fork State Park Lodge, in Guernsey County, near Cambridge.

This was sponsored by the Cambridge/Guernsey County Visitors/Convention Bureau. The purpose of the event was to familiarize tour operators and vacation planners with what the area has to offer. All attractions and businesses in the area were invited to set up a display on their attraction, and talk with the people involved.

Cindy Arent, Judy Momirov and myself represented the N.C.C. Museum at this event. Using glass from our own collections, we set up a display of approximately 25 pieces of Cambridge glass.



Shown here, l to r: Cindy Arent, Judy Momirov and J. D. Hanes

As you can see by the photo, we tried to use as many different lines and colors, as possible. We also had special note pads (with the club logo, address and phone number), as well as pamphlets and candy, for handout purposes.

In attendance were 50 operators of tour companies and travel consultants. Most of them gave us nice compliments on the display and were very interested in the museum and in planning visits to it; as well as sending people on vacations this way. Most of the people did not realize all that our area has to offer and looked forward to visiting it.

By our calculations, if half of the people we talked with were to bring a tour bus, or send ten families of four by car, to stop at the museum, this could increase our admissions at the museum by approximately one thousand people over the next three years. Think of the new members that could be realized by the people brought in by this type of attraction.

We enjoyed the opportunity of showing the Museum to these very important people and in talking to them about Cambridge Glass. We hope that it will pay off for the club and the museum in the years ahead.

NATIONAL CAMBRIDGE COLLECTORS, INC.

ANNUAL CONVENTION

June 21 - 24, 1990

TENTATIVE SCHEDULE of CONVENTION EVENTS

THURSDAY - June 21st

- 10:00 am - Convention Office Opens in Room 100. Registration packets available for pick up.
- 5:00 pm - Convention Office closes.
- 7:00 pm - Convention Chairman's Reception. Upstairs Banquet Room.
Silent Auction - Refreshments - Cash Bar. **Registration Required.**

FRIDAY - June 22nd

- 9:00 am - "Coffee with Cambridge" at the Museum. **Registration Required.**
Registration packets available for pick up at Museum.
- 11:00 am - Convention Office Opens. Registration packets available for pick up in Room 100. **Bring console sets to Room 100.**
- 12 noon - Slide Programs begin.
- 4:30 pm - Book Sales Opens - Room 101.
- 5:00 pm - Antique Show Opens - **Ticket Required.** Closes at 8 pm.
Console sets on display in Room 100 - now until 2 pm Friday
- 7:00 pm - Convention Office and Book Sales close.
- 8:00 pm - Opening Session - Upstairs Banquet Room.
Cash Bar - Dinner - Announcements
Mini-Auction. **Ticket Required.**

SATURDAY - June 23rd

- 5:00 am - Dealer set up at Flea Market. **Admission Fee** for non-dealers.
- 6:00 am - Flea Market Opens - Downtown School Building, Old Washington.
Admission Fee.
- 8:00 am - Buffet Breakfast - Upstairs Banquet Room. **Ticket Required.**
- 9:15 am - Saturday Morning Program
Guest Speaker & Topic: To be announced
- 11:00 am - Antique Show reopens. Closes at 5:30 pm.
Book Sales reopens - Room 101. Closes at 5 pm.
Convention Office reopens - Room 100. Closes at 4 pm.
- 12 noon - Slide Programs Resume.
- 3:00 pm - Annual "Show & Tell" Program - Location to be announced.
Bring your interesting items for discussion and identification.
Leader: **Lynn Welker.**
- 6:30 pm - President's Reception - Banquet Room Upstairs. Cash Bar.
- 7:00 pm - Annual National Cambridge Collector's Banquet. **Ticket Required.**
Guest Speaker: **James W. Bryan, President, Bryan Crystal Inc..**
Topic: "America's Elegant Glassware: Comparisons Between
Yesterday and Today"

SUNDAY - June 24th

- 8:00 am - Buffet Breakfast - Upstairs Banquet Room. **Ticket Required.**
Annual Meeting of N.C.C., Inc. to follow breakfast.
- 11:00 am - Antique Show reopens. Book Sales reopen.
- 1:30 pm - Former Cambridge Glass Company Employees Reunion.
N.C.C. Museum. **Bill Smith** Coordinator.
- 4:00 pm - Antique Show and Book Sales close.

1990 CONVENTION

A Letter From Your Chairperson MARYBELLE MOOREHEAD

The Auction is over and we can now turn our full attention to the Convention. I purchased a beautiful cordial that I'm really happy about adding to my collection.

The Convention will be here in just three very short months. Of course, this means that we will soon be seeing old friends and acquiring new ones as well. There are still a few things to be taken care of, but everything seems to be shaping up okay.

There are several events that cannot take place without help from those of you who will be in attendance. We definitely NEED YOUR HELP and participation. So, I am listing below, the areas that we need help in, and hope that each of you will make plans to help out in every way you can.

THURSDAY NIGHT - SILENT AUCTION

During the Convention Chairman's Reception on Thursday evening, we are planning a "Silent Auction." We need many donated items, in order for this to be successful. Won't you please donate a small (or large) item. It doesn't have to be Cambridge glass, but should be related. Almost anything will be appreciated, and will add greatly to the fun of this event. Please be sure your name is on each item, so we can give you proper credit.

Thursday evening is an informal get-together at which we get acquainted and have fun. Besides the Silent Auction, there will also be, light refreshments, and of course, a cash bar.

PINK (and crystal) CONSOLE SETS NEEDED

We are trying something a little different this year. Since we no longer have a display room (at the Convention site), we thought it would be nice to decorate the console sets, used on the Saturday evening Banquet tables, ahead of time and display them in Room 100, from 5 pm Friday until mid-afternoon Saturday.

In order for this to happen, we need as many of you, as possible, to loan us a pink (or crystal if you don't have pink) console bowl(s) and candlesticks. We plan to decorate them with

flowers and candles. You can pick them up, after the Banquet, to enjoy in your motel room, and then take them home with you.

PLEASE help us with this convention project and deliver your Console sets to Room 100 before 2 pm Friday afternoon. If you can deliver them anytime Thursday or Friday morning, it will be greatly appreciated. Please be sure to have your name on each piece, so we won't have any mix-ups.

FRIDAY NIGHT - "MINI-AUCTION"

As always, Willard Kolb will be our auctioneer for the "Mini-Auction" to be held during our Friday evening opening session. Once again, we must depend on each of you to donate an item or two, so he will have something to auction! As you know, he's not at all particular as to what it is, he just loves to play auctioneer - and have lots of fun - while making lots of money for the Museum fund!!

Please leave these items with me, J.D. Hanes, Janice Hughes, or in the Convention office, at anytime during Thursday or Friday (well in advance of the Show opening at 5 pm), if at all possible. We will, of course, accept your donation at the Friday night party, if you cannot get it to us sooner. Please be sure to have your name on each item (an address label is ideal), so we can keep our records straight, and also, to make sure we get a thank you note written to you, giving you a tax credit for your donation.

We have made a change in this evenings menu and we hope you will like it. As usual, there will be a cash bar. Announcements will be made, including the results of the election of members to our Board of Directors.

Our program chairman, Clarke West, has obtained the services of an outstanding speaker for our Banquet on Saturday evening. His name is James W. Bryan, and he is President of Bryan Crystal Inc., Sharon, Pennsylvania. His topic for the evening is, "America's Elegant Glassware: Comparisons Between Yesterday and Today." We will have more about Mr. Bryan in the May issue of the CRYSTAL BALL. I feel sure you will want to be present for this event.

Your Convention Registration form, along with additional convention activity details will be included in your May newsletter.

AUCTION REPORT

by CINDY ARENT

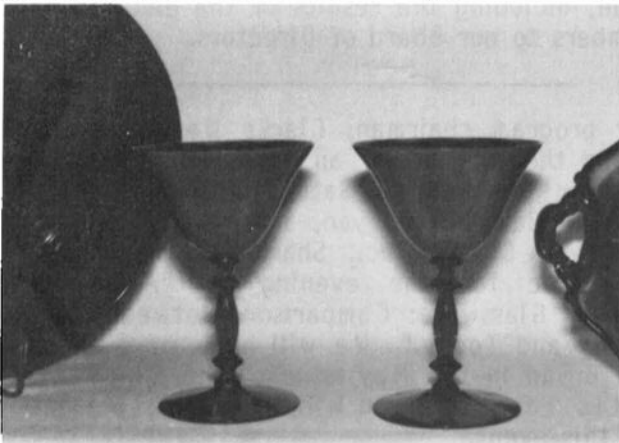
(Photo's by Frank Wollenhaupt)

The annual National Cambridge Collector's auction is now history. The 1990 version of this popular glass collectors event was a great success, thanks to the efforts of chairman Lynn Welker and his committee. Auctioneer Craig Connelly, Granville, Ohio, also deserves a pat on the back for motivating eager buyers from start to finish.



l to r: Auctioneer Craig Connelly; Billy Harbaugh; (seated) Vicki Wollenhaupt and Joy McFadden; J. D. Hanes and Lynn Welker

Many collectors and dealers were in attendance from many states across the country. Approximately 350 lots of fine Cambridge glassware were auctioned throughout the day.



Auction highlight were these two "Tomato" (experimental carmen/yellow opaque) #3130 6 oz. tall sherbets.

They sold for \$500 each, to one buyer, even though they both had minor damage.

This year's auction seemed to be the "year of the small," as the highest prices went to some of the smallest items. For example, two carmen 1 oz. Tally-Ho cordials, gold encrusted D1107, drew bids of \$290 and \$280 respectively. Likewise, a Nude stemmed 1 oz. cordial, in forest green, went home with a happy collector for \$360.



These twin Tally-Ho cordials, in carmen, brought a combined price of \$570.

At the height of the Auction day, collectors hearts pounded double time as they bid the extremely rare, and much admired, #3130 experimental Tomato sherbets, up to a price of \$500 each. Both pieces went home with the same lucky buyer. A few items later, a 52" cane, which was verified to be made at the Cambridge factory, sold for \$305. The cane, which is very fragile, was purchased by a local buyer. I am happy to report that it arrived at its new home in one piece, later that night!



Glassmaker's whimsey, 52" cane, hollow w/white opaque stripes, held here by Mary Martha Mitchell, sold for \$305.



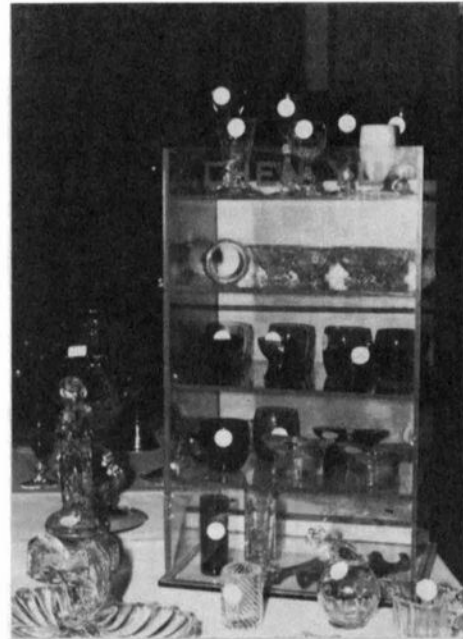
This, rarely seen, little Nearcut "Duchess" oil lamp sold for \$150; and the equally unusual #2351 Nearcut Orange bowl w/base, went home with some lucky collector for \$95.

Other interesting items from the auction included a beautiful 12" covered Urn, gold encrusted, etched Minerva, that sold for \$205; and an amethyst Caprice 7½" vase brought \$195. An exceptionally good buy was the 6½" peachblo Bashful Charlotte for \$65. Even with a minor chip on one wing, the ebony 8½" swan realized \$225; while a light emerald green Melon Boy candlestick went for \$200. Two sets of Willow blue cups and saucers, etched Apple Blossom, were in great demand when they sold for \$115, per set!



This #3500/42 12" covered Urn, gold encrusted, etched Minerva, sold for \$205.

One of the best buys of the day was a pair of Blue II Dolphin candlesticks which sold at \$200 for the pair.



Many of the smaller items included in this year's auction are pictured here.

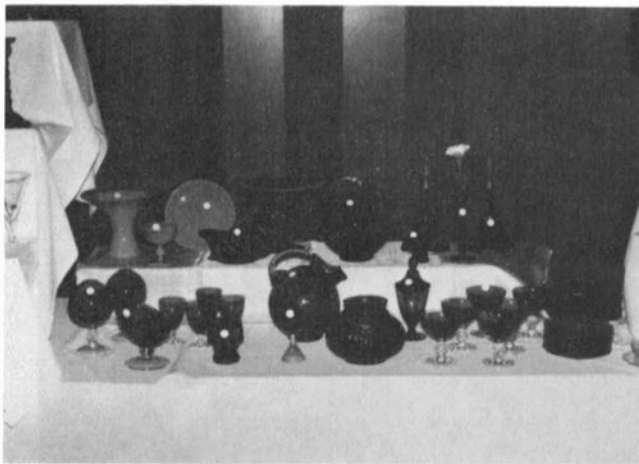


This signed Nearcut 9" deep bowl in the satin finish Roses pattern brought \$150.

Additional items and prices realized, included: the #463 amber 12" oval Dolphin Head, footed, bowl \$160; #520 amber Buddha figure \$155; #3500/91 6" 2-hdld. square tray, etched Rosepoint \$115; and the very unusual #112 5½" openwork plate, with the George Washington bust, 1932 Centennial and trim in red, white & blue enamel, sold for \$120.

Now that the auction is over, Cambridge lovers should begin making plans to attend the next N.C.C. event. On June 21 through 24, the 1990 N.C.C. Convention and Antique Show & Sale, will be held at the Shenandoah Inn, in Old Washington, OH. If you were unable to attend the Auction, you will surely find that "special" piece of glass at the Antique Show.

see next page for additional photo's



The entire Auction was beautifully displayed by auction chairman Lynn Welker and his committee. Shown above are but a few of the outstanding pieces of Cambridge Glass that changed hands during this once a year event.

A total of 350 lots were sold in a period of five and one-half hours; and this also allowed for a half hour lunch break. Auctioneer Craig Connelly keeps things moving at a brisk pace, and his sense of humor never allows for a dull moment. This year's dollar total was the largest to date. (see page 15)

A very large "Thanks" is indeed in order, to all who helped make this possible!

CAMBRIDGE - - THE FIRST YEARS

by MARK A. NYE

Continuing where we left off last month, this article deals with the wares of the new Cambridge Glass Company, its advertising and travels of Mr. Bennett, as reported in the Crockery & Glass Journal.

The very first Cambridge advertisement to appear in the Crockery & Glass Journal was in the September 25, 1902 edition, and its text read:

09/25/02 "A. J. Bennett, President of the Cambridge Glass Co., Cambridge, Ohio, Manufacturers of Pressed and Blown Tableware and Specialties. We also operate the Canton Glass Works and make the full line of Druggists' Glassware, Fish Globes, Cake Covers, etc. Catalogs and Price Lists mailed on application. Special attention to the making and working of Private Moulds. Pressed Vault, Sidewalk and Skylight Glass. New York Agency - Thos. G. Edge, 66 West Broadway. Resident agents in all the large cities. Traveling salesmen in every State. Write us and we will have our salesman call upon you."

This advertisement appeared in the next five consecutive issues, when it was replaced by another ad that ran for the next five issues.

10/16/02 "Arthur J. Bennett, president of the Cambridge Glass Co. of Cambridge, O., was in the city (Philadelphia) last week on a business trip."

10/30/02 "Thos. G. Edge is exhibiting a splendid line of pressed bar goods from the Cambridge Glass Co. Lots of new features in fish globes, cake covers and druggists' sundries are also being displayed. Tastefully decorated opal molasses cans, boasting many improved features over their predecessors, are another of the lines deserving consideration. The engraved gold decoration on these cans is particularly neat and attractive."

10/30/02 "Arthur J. Bennett of the Cambridge Glass Co. was registered at the Hotel Henry (Pittsburgh) Wednesday of the past week."

11/13/02 "The Cambridge Glass Co. is one of the model plants of the country. It is immense in size, covering many acres, and the buildings are lofty, giving plenty of light and air. Arthur J. Bennett, the president, has found some things to change in the original plans and has developed ideas that are innovations in glass making, but which have already proved their usefulness and practicability.

There are two furnaces with all new and improved machinery and accessories, ample workshops, mould rooms, packing rooms, and a very pretty office. A system has been established all through the factory that insures the greatest efficiency of production, and this is particularly noticeable in the selecting room, where the tables are kept clear. Neatness and order prevail everywhere. There is no litter or junk about the premises, and the cellar is as clean as the workrooms. Most important of all is the ware. It is the intention of the management to make everything that can be made in glass, and every little while a new line is added. The quality is the finest. When the first shipment was made it was remarked that for the initial output of a new factory the quality was remarkable. Now that things are in working order even this has been improved, and the glass is as good as anything that is made. Business is excellent and has been from the start, and Mr. Bennett is to be congratulated on his success as a glass manufacturer."

The third Cambridge advertisement to appear in Crockery & Glass Journal did so in the December 11, 1902 issue. The text read:

12/11/02 "The Cambridge Glass Co., Cambridge, O., Manufacturers of Pressed and Blown Glassware of every description. Special reasons why you should be interested in us: This factory produced the highest class of glassware. We make prompt shipment and give our trade every consideration and attention. The variety is immense and the capacity equal to the demand. Our new catalog of regular table glassware and druggists' specialties will be ready in January. Make your application and we will put your name on the mailing list, and we will also keep you posted on new additions to our line from time to time."

01/01/03 "The Cambridge Glass Co. will not be represented at the exhibition as they cater largely to the retail trade. Their business has been good since they started in the early summer, orders consuming the full production

continued on page 13

Club News

National Cambridge Collectors, Inc.
Quarterly Meeting
March 2, 1990
Shenandoah Inn
Old Washington, Ohio

The regular meeting was called to order at 8:12 pm by President Nye. In attendance were 60 club members and 11 Board members.

The minutes of the previous meeting held on November 4, 1989, were read by J.D. Hanes. They were amended to read, in a new paragraph at the end, that President Nye presented Everett and Shirley Patterson with a "Committed to Cambridge" award for their donation to the museum.

Bill Smith gave the treasurer's report. He stated that as of January 31, 1990, the Operating equity was \$22,977 and the Museum equity was \$134,840 for a total of \$157,817. Bill Smith then listed some figures of income and expense for the year ended 12/31/89.

President Nye then listed some large contributions that the club had received from the Central Florida Glass-a-holics, the Houston Glass Club and the N.C.R. Corporation of Cambridge.

President Nye then announced that Ray Pankow and Mary Henderson, both members of the club had passed away recently. Also Howard Lovelady, assistant sales manager at the Cambridge factory had also passed away.

COMMITTEE REPORTS

AUCTION: Will give preview after the meeting.

MUSEUM FACILITIES: Chairman Willard Kolb reported that the drainage ditch and hill to the east of the museum has had a culvert installed and is being graded and filled. He also reported that we have purchased a new garden tractor for the museum. Other work will be finished in the spring.

MUSEUM INTERIOR: Janice Hughes reported that all of the glass that was not washed last year has been done this year. This was done between the first of 1990 and the end of Feb-

ruary. She thanked J.D. Hanes, Marybelle Moorehead and Lynn Welker for their help.

Janice then stated that those people who have loaned items in the museum will be getting a copy of their lists so that they may be re-valued.

Janice Hughes reported that in 1989 the museum had 608 registered guests. There were visitors from 36 states, along with West Germany, Canada, New Zealand and France.

Lynn Welker thanked Janice Hughes for her help in cleaning at the museum.

President Nye announced that the museum hours have been changed. They will be 10 am to 4 pm Wednesday through Saturday, and 12 noon to 4 pm on Sunday. He stated that there has been a lot of publicity and advertising for the museum.

CONVENTION: Chairman Marybelle Moorehead reported that all of the plans are coming along. She does have a speaker for the banquet. She reminded everyone to please bring console sets for the banquet.

President Nye stated that if we do not get enough sets, we would use plastic.

FLEA MARKET: President Nye reported that Doyle Hanes has had to resign as chairman due to work problems. However, he will assist whoever takes it over.

Doyle Hanes reported that the school has been reserved and that he will go ahead and mail out the contracts for it in the next two weeks.

ANTIQUA SHOW: Chairman Joy McFadden reported that the contracts are out. Also the tables have been reserved. The advertising is also going out. She stated that she has also sent contracts to the first ones on the waiting list.

President Nye announced the changes in Sunday morning at Convention. Breakfast will begin at 8 am with the Annual Meeting at 9 am, and the show will be open from 11 am to 4 pm.

PUBLICATIONS: Mark Nye reported that he is working on the rewrite of the Stemware book. He is unsure if it will be ready in time for Convention. Bill Smith is working on the

Caprice book, but is also unsure of the completion date.

Mark Nye reported that there has been on-going talks with Collector's Books on the 1930-34 and 1949-53 catalog reprints.

NOMINATING: Chairman Willard Kolb announced the nominations for this year's election. They are, in alphabetical order:

Judy Momirov, Cambridge, Ohio
Mark Nye, Miami, Florida
Bill Smith, Springfield, Ohio
Marlene Snyder, Marshallville, Ohio

President Nye then asked for nominations from the floor. There were none. Nominations were closed.

PUBLIC RELATIONS: Mark Nye reported that he would be attending the Arlington, TX show next weekend, representing the club. He also reported that members John and Peggy Scott would be doing a Cambridge glass display at the show.

PUBLICITY: Chairman Cindy Arent reported that she, Judy Momirov and J. D. Hanes had attended a local tourism show. It was attended by 50 tour operators and travel consultants. The results appeared to be very positive.

MEMBERSHIP: Chairman Phyllis Smith reported that we have 944 Individual, 357 Associate and 7 Honorary members, for a total of 1,309. She stated that if anyone wanted to pay their dues after the meeting or at the Auction, that she could do that.

She asked if anyone who knew of a death or illness of a club member or friend, to please let us know so that it could be listed in the CRYSTAL BALL.

CRYSTAL BALL: Editor Phyllis Smith reported that she hopes to have the CRYSTAL BALL Index done very soon. She stated that it would not be totally complete. To explain, she said it would list articles done on certain items and also catalog pages for certain items, and the like.

Phyllis Smith then reminded everyone that all back issues of the CRYSTAL BALL can be ordered. These are from Issue #1 in May 1973, to the present. She reported that the cost of back issues has just increased, however. The new price will be \$1 for a single issue or 12 issues for \$10.

Phyllis then asked for articles for the CRYSTAL BALL.

OLD BUSINESS: President Nye reported that the Fund Raising Drive had started one year ago. To date, we have received \$11,750 to the fund. Of that total, \$2,500 was credited to Larry Hughes for the work he had done on installing the water line at the museum.

NEW BUSINESS: Bill Smith asked if anyone knew of a former worker from the factory, who had not attended the Reunion during Convention, to please let him know.

A motion was made by Janice Hughes to adjourn at 8:50 pm. Meeting adjourned.

Lynn Welker conducted "Show & Tell." Lynn also gave a preview of the highlights of the Auction.

Respectfully Submitted,
J.D. Hanes, Secretary

Study Club News

STUDY GROUP #13 - SOUTHWEST OHIO "MIAMI VALLEY OHIO"

The Miami Valley Ohio Study Group met on February 13th at the Huber Heights Library. There were ten members and two guests present.

In the absence of President Frank Wollenhaupt, Vice-President Jim Kennon presided over the meeting. We decided on two dates for cleaning the etching plates - April 28th and May 5th. We will again be having a \$10 gift exchange at Christmas.

Our program for discussion was Figurals. We had nine different flower frogs, cat and dog bottles and several bookends on display.

The "Show & Tell" items were as follows: Cambridge Square celery w/"Vancoram Brand" etched in the bottom; five pieces of etched Rosepoint - a #3900/117 20 oz. jug, #7966 2 oz. sherry, #944 cream, #3400/38 tumbler and #498 5 oz. juice tumbler; two #3400/12 forest green tumblers in Farber holders; #968 2-pc. etched cocktail icer, etched Elaine; two

continued on next page

STUDY CLUB continued from page 11

#3400/71 nut cups in crystal and carmen; 7" #1090 comport w/blue & silver applied decoration; #1287 10" vase w/blue & orange horizontally applied enamel lines; two #1327 cordial or favor vase in pistachio and forest green; vase that was possibly Morgantown; #3121 1 oz. brandy; and #3121 1 oz. cordial w/gold krystol bowl.

submitted by Vicki Wollenhaupt

**STUDY GROUP #14 - CAMBRIDGE, OHIO
"THE CAMBRIDGE CORDIALS"**

Contact person - Judy Momirov
Phone: (614) 432-2897

The Cambridge Cordials held their meeting February 17th, in the home of Rich and Sally Bennett. There were ten members and one guest (Rich and Sally's baby, Steve) present.

Our former Cambridge Glass Company worker was unable to attend. Therefore, Rich and Sally had a slide program on a catalog of The Lotus Glass Company. Lotus did decorating on glass from many different companies. Also, we played a game. It was jumbled color and treatment names. The game sheets and the slide program were obtained from Charles Upton, who we "Thank" very much.



CAMBRIDGE CORDIALS "Show & Tell" ITEMS
Look at the shakers carefully - are they Caprice?? Maybe not! Let us hear your opinion as to who made them.

"Show & Tell" was held. Items on display included: a 3" crown tuscan swan w/original label and Charleton flowers on the wings; a #1336 vase in carmen w/ original label; a dark green feather carnival cracker jar; a large bunny box in crystal with fur detail; a stack-away ashtray set, in crystal w/cut pattern; a Decagon peachblo dinner plate E/Hunt Scene; a #643 6" 2-piece ashwell in light emerald

green, E/Hunt Scene; a #1301 crown tuscan vase w/gold encrusted Candlelight etch; a #1238 vase gold encrusted Wildflower; and a #3900 2-part relish.

Next meeting will be held on March 17th in the home of Kevin and Lorraine Weinman.

submitted by J. D. Hanes

WE GET LETTERS

Dear N.C.C.,

Please find enclosed a check for \$119.00 -- \$15.00 for the Crystal Ball (membership) renewal and \$104.00 for the Fund Drive. It is a privilege and a pleasure to be able to have a hand in preserving Cambridge glass - the most beautiful glass in the world!

I am really looking forward to receiving the "Committed to Cambridge" award and would like to compliment the people who decided what award to present.

Sincerely, Ruth Donnell, OH

Dear Officers & Committee Chairpersons,

Want to say hello to all of you wonderful people. You have been so kind and considerate to me, since Press (J.P.) Martin's passing away. We were both so grateful how you all welcomed both of us, whenever we attended any Conventions. You are all such a genuine group of people. God Bless all of you!

Sincerely, Margaret Baker, PA

P.S. Enclosed is a check for \$15 for my (membership) subscription to your magazine. Thank you! Happy Easter to all of you!

Fund Drive Update

Recent contributors to the fund drive are: Mary Lou Nash; Marcy & Dale Allenbaugh; Mabel Stutz; Sandy & Dennis Boone; Swede & Kay Larsson; Jean Cushman; Norma & Donald Oliver; Ruth Donnell; James Buffenbarger; Ruby Landman; Diane Chamberlain; Cynthia Ulrich and Dorothy Kell.

As of March 2nd, the Fund Drive stands at \$11,958 in cash, glass, other goods and services rendered. The latter consists of the installation of the line connecting the museum to the city water line.

Sixteen "Committed to Cambridge" awards were distributed at the Quarterly meeting. The awards will next be presented at the Annual Meeting in June.

FIRST YEARS continued from page 9

of two fourteen pot furnaces. They have a model new plant and conditions are favorable for a busy year during 1903."

02/19/03 "A. J. Bennett president, Cambridge Glass Co. was in New York this week."

04/11/03 "The National Glass Co. have set aside about \$750,000 to put gas producers in their leading plants. They have just closed a contract for producers in their large new Cambridge (O.) plant."

08/06/03 "The Cambridge Glass factory resumed last Monday, and the prospects are it will continue to run right through the fire with plenty of business. It is one of the largest plants to be found anywhere along the Ohio river."

Beginning with the January 21, 1904 issue of Crockery and Glass Journal and appearing in five consecutive issues, was an advertisement for the Radium or #2626 pattern, stating it was just out. Also in the ad appeared the Nearcut trademark written as "Near-Cut." The ad also listed showrooms in some 12 cities, from New York City to Seattle, Washington.

02/18/04 "While scarcely as valuable intrinsically as its mineral namesake, the 'Radium' tableware discovery of the Cambridge Glass Co., samples of which are shown by Thos. G. Edge promises to imitate the former somewhat in popularity. At any rate, it is satisfying the trade very well, the accomplishment aimed at by its progenitors. The 'Radium' pattern is startlingly similar to cut glass in sharpness, clearness and brilliancy of lustre. Besides, the ware possesses a gracefulness of shape that alone would attract the attention of the most fastidious buyer."

06/23/04 "The Cambridge, O., Glass Co. have changed one of their furnaces to producer gas and propose to inaugurate the same change in the second one."

07/07/04 " . . . Roy Boyd has resigned his position as auditor with this company (Imperial Glass Co.) and accepted the secretaryship of the Cambridge (O.) Glass Co."

08/18/04 "The Cambridge (O.) Glass Co. did not get repairs completed till the past week. They are starting in full this week."

09/01/04 "A. J. Bennett, president of the

Cambridge Glass Co., was in New York several days last week."

11/03/04 "The Cambridge, (O.) Glass Co. have two furnaces operating. They are each of fourteen pots capacity and are built on the regenerative principle. A new electric power plant is under construction and expected to be ready in about a month. It will furnish power to small motors which will be placed in various parts of the plant where power is needed, and it is expected that there will be a great economy in the cost of power furnished as a result. The gas engines will all be taken out and electricity used wherever possible."

A full page advertisement ran in the December 15, 1904 issue and its text read:

12/15/04 "Something Entirely New for 1905. Near Cut Glass. Its the Acme of Glassmaking. Jobbers and first-class retailers must have it. Samples will be ready January 1st, 1905. Made Exclusively By The Cambridge Glass Co. Cambridge, Ohio."

12/22/04 "Thos. G. Edge has received the new lines from the Cambridge Glass Co. The new patterns are very attractive in design, and there is a brilliancy and life to the glass which will be hard to beat."

Thus ended the first two and one-half years of production at the Cambridge Glass Co.

AN EXPRESSION OF SYMPATHY

MARY F. HENDERSON
Woodsfield, Ohio

Former NCC member Mary Henderson, 68, died March 2nd, following a lengthy illness. She is survived by her husband of 48 years, Wilbur, daughters Barbara Long and Mary Kasper, sons, Paul, John and Tom, and six grandchildren.

HOWARD A. LOVELADY
Elyria and formerly Cambridge, Ohio

Mr. Lovelady, 93, sales manager for the Cambridge Glass Co., died February 18th.

To Their Families: "May it comfort you to know that others care."

PRESIDENT. continued from page 1

Thursday Morning - I am lazy and sleep in until 8 am, since there is nothing planned except to visit the local shops. After breakfast I return to my room and the telephone rings. It is the desk clerk, telling me I have several urgent messages, including one from my secretary, who has been told (as have the other callers) that I am not registered there! After a long conversation with the office, the crisis was not really a crisis after all. The second message changes my plans, and off I go to St. Clairsville to spend part of the day with Willard Kolb.

Thursday Afternoon - I drive from Bellaire to New Concord so I can visit Margaret Lane Antiques, the shop run by Lynn Welker. I leave there around 5 pm with several additions to my Cambridge collection, including: two unusual pieces in royal blue; a vase that uses the stem from the #1066 stemware line; and a decanter from the #3400 line. Back in Cambridge, I make a quick stop and phone call from the Museum, and make arrangements to visit a dear friend that evening.

Thursday Evening - my evening, spent visiting with Mary Martha Mitchell, begins about 7 pm and it is well after 1 am when I leave. During those hours we have covered a wide range of topics, many not related to Cambridge glass, and the evening has been a delightful one.

Friday Morning - like most mornings, this one arrives all too soon, but there is work to be done! Since early winter, the auction glass has been stored at the Museum, and today it must be brought to the Shenandoah, unpacked and arranged for tomorrow's auction. I join auction chairman Lynn Welker and his committee, as they arrive at the museum, in loading the glass, risers, shelving, and table covers, into several vehicles. Out to the Shenandoah we go and carry everything from the parking lot, down a flight of stairs and a long corridor, to the room where the auction is to be held.

Friday Afternoon - by early afternoon the glass is unpacked and arranged for tomorrow's big event. Leaving the Shenandoah, I head for Norwich and the Stage Coach Antique Mall. I seldom leave Doris and Roy Isaac's shop empty handed, and this visit is no exception. After visiting the other shops, I rush back to the Shenandoah to eat and prepare for the meetings to take place that evening.

Friday Evening - is spent at the Board of

Directors meeting, the Quarterly Meeting, Auction Preview, and visiting with friends.

Saturday - this is Auction day and there is no travel except in the evening when we go into Cambridge for dinner. Later in the evening, those of us who remain at the Shenandoah, sit and talk until late in the evening.

Sunday - I leave the Shenandoah around 10 am and drive to the Museum where I stay until time to leave for the Columbus airport. I have been forewarned that I-70W is closed just a little east of Norwich, due to an overturned truck carrying hazardous cargo. I take an alternate route around that area, and arrive in Columbus on schedule.

Sunday Afternoon - my trip home does entail changing planes in Atlanta (it has been said that even the trips to Heaven or Hell will require a change in Atlanta). My plane for Miami departs Chicago from a different concourse (just once in my travels have I changed planes and had arrival and departure gates adjacent to one another). We board on schedule, but at the last minute the Captain informs us of a problem. The handle of one baggage compartment door has come off, and another has suffered damage to its frame. Both must be repaired before we can depart. We finally leave for Miami an hour and twenty minutes late.

Sunday Evening - the plane is full, but the flight attendants do manage to serve everyone their beverage and meal, and retrieve and store their trays during the hour and twenty-five minutes it takes to reach Miami. I finally arrive home shortly after 10 pm. A quick look through the mail and it is time for sleep, since tomorrow it is back to work. The good news (?), I leave again on Friday! This time I'm heading for the Arlington, Texas show - but that's another story.

AUCTION CORRECTIONS

13. crystal with royal blue handle; 14. gold encrusted Portia; 16. #3085 instead of #3058; 27. 9 oz. instead of 12 oz.; 89. chip on 1 cup; 124. 2 instead of 1; 173. 2 nicks; 191. etched Apple Blossom; 206. 1 oz. cordial; 209. crack in arm; 231A. Blue II Dolphin candlesticks; 322. #1402/33 amber satin Tally-Ho sugar & cream; 330. both have foot chips; 333. broken, not sold; 334. scratched; 335. scratched; 336. no handle; 350. fracture in bottom.

1990 AUCTION RESULTS

1. \$ 35.00	61.\$ 55.00	121.\$ 85.00	181.\$ 52.50	241.\$ 15.00	301. \$ 30.00
2. 30.00	62. 65.00	122. 20.00	182. 85.00	242. 68.00	302. 70.00
3. 27.50	63. 55.00	123. 60.00	183. 90.00	243. 6.00	303. 47.50
4. 22.00	64. 160.00	124.* 75.00	184. 70.00	244. 45.00	304. 45.00
5. 30.00	65. 67.50	125. 55.00	185. 30.00	245. 35.00	305. 20.00
6. 25.00	66. 90.00	126. 32.50	186. 40.00	246. 125.00	306. 10.00
7. 15.00	67. 45.00	127. 45.00	187. 190.00	247. 37.50	307. 60.00
8. 30.00	68. 55.00	128. 32.50	188. 230.00	248. 35.00	308. 54.00
9. 140.00	69. 65.00	129. 80.00	189. 200.00	249. 45.00	309. 35.00
10. 90.00	70. 52.50	130. 37.50	190. 60.00	250. 57.50	310. 22.50
11. 28.00	71. 75.00	131. 35.00	191.* 50.00	251. 105.00	311. 25.00
12. 55.00	72. 95.00	132. 50.00	192. 40.00	252. 75.00	312. 25.00
13.* 35.00	73. 50.00	133. 25.00	193. 180.00	253. 77.50	313. 25.00
14.* 35.00	74. 28.00	134. 65.00	194. 170.00	254. 50.00	314. 9.00
15. 17.50	75. 17.50	135. 175.00	195. 180.00	255. 145.00	315. 30.00
16.* 60.00	76. 20.00	136. 200.00	196. 120.00	256. 195.00	316. 32.00
17. 17.50	77. 45.00	137. 45.00	197. 55.00	257. 5.00	317. 20.00
18. 10.00	78. 110.00	138. 60.00	198. 40.00	258. 64.00	318. 15.00
19. 60.00	79. 50.00	139. 120.00	199. 70.00	259. 90.00	319. 50.00
20. 15.00	80. 50.00	140. 36.00	200. 20.00	260. 45.00	320. 28.00
21. 37.50	81. 150.00	141. 89.00	201. 42.50	261. 27.50	321. 43.00
22. 27.50	82. 35.00	142. 12.50	202. 175.00	262. 40.00	322.* 35.00
23. 60.00	83. 25.00	143. 70.00	203. 40.00	263. 30.00	323. 32.50
24. 108.00	84. 13.50	144. 10.00	204. 77.50	264. 60.00	324. 26.00
25. 52.50	85. 40.00	145. 155.00	205. 90.00	265. 35.00	325. 37.50
26. 12.50	86. 12.50	146. 40.00	206.* 9.00	266. 70.00	326. 27.50
27.* 20.00	87. 37.50	147. 22.50	207. 50.00	267. 30.00	327. 25.00
28. 12.50	88. 17.50	148. 25.00	208. 150.00	268. 40.00	328. 30.00
29. 18.00	89.* 70.00	149. 25.00	209.* 70.00	269. 80.00	329. 32.50
30. 12.50	90. 95.00	150. 570.00	210. 42.50	270. 5.00	330.* 12.50
31. 55.00	91. 150.00	151. 27.50	211. 45.00	271. 30.00	331. 15.00
32. 22.50	92. 40.00	152. 50.00	212. 25.00	272. 40.00	332. 27.00
33. 10.00	93. 27.50	153. 17.50	213. 84.00	273. 60.00	333.*
34. 22.50	94. 40.00	154. 25.00	214. 36.00	274. 62.50	334.* 57.50
35. 22.50	95. 62.00	155. 17.50	215. 60.00	275. 90.00	335.* 72.50
36. 50.00	96. 35.00	156. 15.00	216. 85.00	276. 50.00	336.* 20.00
37. 25.00	97. 30.00	157. 20.00	217. 30.00	277. 50.00	337. 15.00
38. 57.50	98. 85.00	158. 22.50	218. 40.00	278. 35.00	338. 7.00
39. 35.00	99. 12.50	159. 25.00	219. 190.00	279. 30.00	339. 20.00
40. 40.00	100. 12.50	160. 12.50	220. 125.00	280. 12.50	340. 50.00
41. 40.00	101. 37.50	161. 25.00	221. 25.00	281. 17.50	341. 5.00
42. 35.00	102. 85.00	162. 40.00	222. 60.00	282. 75.00	342. 76.50
43. 22.50	103. 55.00	163. 10.00	223. 50.00	283. 35.00	343. 17.50
44. 30.00	104. 85.00	164. 20.00	224. 105.00	284. 20.00	344. 12.50
45. 30.00	105. 65.00	165. 28.00	225. 120.00	285. 18.00	345. 20.00
46. 25.00	106. 100.00	166. 66.00	226. 75.00	286. 30.00	346. 40.00
47. 40.00	107. 135.00	167. 35.00	227. 305.00	287. 45.00	347. 20.00
48. 145.00	108. 130.00	168. 17.50	228. 70.00	288. 32.50	348. 15.00
49. 80.00	109. 220.00	169. 17.50	229. 95.00	289. 205.00	349. 25.00
50. 25.00	110. 210.00	170. 18.00	230. 360.00	290. 22.50	350.* 15.00
51. 63.00	111. 40.00	171. 40.00	231.1000.00	291. 10.00	
52. 25.00	112. 40.00	172. 40.00	232. 24.00	292. 20.00	231A.*200.00
53. 45.00	113. 50.00	173.* 15.00	233. 30.00	293. 20.00	-----
54. 12.50	114. 70.00	174. 7.00	234. 12.50	294. 35.00	* = Auction
55. 160.00	115. 225.00	175. 22.50	235. 20.00	295. 70.00	Corrections
56. 45.00	116. 60.00	176. 25.00	236. 95.00	296. 105.00	
57. 20.00	117. 15.00	177. 40.00	237. 63.00	297. 55.00	see
58. 90.00	118. 50.00	178. 20.00	238. 12.50	298. 45.00	previous
59. 27.50	119. 40.00	179. 22.50	239. 87.50	299. 60.00	page
60. 45.00	120. 40.00	180. 30.00	240. 35.00	300. 115.00	

THESE COLLECTIONS ARE FOR SALE

SPOONS	CAMERAS	SOUP LADLES
RELIGIOUS MEDALS	CRUCIFIXES	ANTIQUA JEWELRY
POST CARDS	SALT & PEPPERS	KEYS TOYS
LADIES COMPACTS	VICTORIAN CRYSTAL	BELLS
CIGARETTE CASES	AUTO MEMORABILIA	THIMBLES
ICE PICKS	ANTIQUA TOOLS	EYE CUPS
WRIST WATCHES	RULERS	VICTORIAN SILVER
COINS	DEPRESSION GLASS	TRAINS
SAFETY RAZORS	BADGES	LETTER OPENERS
STILL BANKS	SHAVING MUGS	MILITARY RELICS
SHOE HORNS	FOUNTAIN PENS	AVON ITEMS
MILITARY MEDALS	PEN KNIVES	FIRST DAY COVERS
PAPER MEMORABILIA	MECHANICAL PENCILS	POCKET WATCHES

CHARLES MIKULIK BOX 416 ELIZ., NJ

N.C.C., Inc., FLEA MARKET

SATURDAY - JUNE 23, 1990
6 am - 12 noon

BUCKEYE TRAIL HIGH SCHOOL
In the heart of downtown Old Washington

For contract or additional information
write to: Flea Market Chairmen,
Marlene & Harold Snyder,
P.O. Box 416, Cambridge, OH 43725,
or phone: 614/432-6794.

L. A. MANESS

RT. 1, BOX 552, ASHLAND, VA 23005
(804) 798-1825

C = MARKED P & I \$3 CTN.

#1138 8½" Seagull Flower holder	—	\$ 55
#84 Mt. Vernon stein, 14 oz., amber w/cryst. appli. hld. C	—	52
#3400/70 3½" cranberry, 4 ftd. willow blue C	—	42
#3400/91 3-part, 8" relish, Rock Crystal Cut #615 C	—	47
#3400/91 3-part, 8" relish, amber, E/Cleo C	—	55
Round #674, 13" bowl, pink with E/#725 C	—	32
DECAGON		
Basket, 2-hld. C	—	25
Center hld. tray, topaz	—	45
Cup & saucer, topaz (3) C set	—	15
Plate, 8-3/8", topaz (8) C each	—	10
#1096 cream or sugar, topaz C each	—	12

VISA/MASTERCARD WELCOME

— Classified —

FOR SALE: #3122 Diane etched: 7-1/4" goblets (11); 5" juices (12); sherbets (8); 6-1/4" underplates (5). Make offer. Barbara Jennings, 134 Garden Parkway, Henrietta, NY 14467. Phone: 716/334-5066.

FOR SALE: "Farber Brothers Krome-Kraft a Guide for Collectors" by Sferrazza - \$16.95 ppd. 1941 Farber Brothers Catalog Reprint w/ free price guide - \$10.95 ppd. Both books - \$25.00 ppd. Ben's Books, P.O. Box 5301, North Branch, NJ 08876. NJ residents add sales tax.

FOR SALE: #3400/71 (2) carmen nut cup \$20. #646 dark green candlestick \$22. Decagon royal blue center hld. tray \$40. #3400/842 green, 12" bowl E/Gloria \$65. UPS Extra. Robert Taylor, 80 Middle Street, Apt. 21, Gloucester, MA 01930. Phone: 508/281-4637.

WANTED: Marjorie #7606 pattern. Serving pieces, 8 oz. goblets, 10 & 12 oz. tumblers. Marjorie Kleemann, 5013 Greenbrier Drive, McHenry, IL 60050.

FOR SALE: 8-1/2" moonlight blue frosted Draped Lady flower frog. Has straw mark on base of statue, otherwise mint condition. No chips. \$240 or best offer, and we will pay UPS and Insurance. Reply to Susan P., P.O. Box 1232, Dolan Springs, AZ 86441. 602/767-3996.

ADDITIONAL BOOK on CAMBRIDGE GLASS
(not listed in ad on page 2)

CAMBRIDGE ROSE POINT
compiled & edited by Mark A. Nye

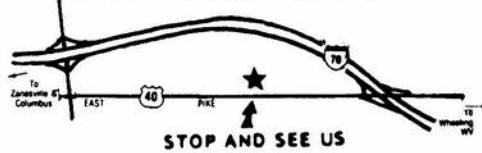
\$12.95 - includes price guide
(add \$1 S&H 78¢ tax for Ohio residents)

ATTENTION --- NEW MUSEUM HOURS

Wednesday thru Saturday - 10 AM to 4 PM
Sunday - 12 noon to 4 PM
Closed Monday & Tuesday - Easter & July 4th

Stage Coach Antique Mall

WELCOME TO CLASS COUNTRY!



RT. 40 ONE-HALF MILE WEST OF I-70 EXIT 8164
MANY DEALERS - WIDE SELECTION - PLENTY PARKING

WE FEATURE GLASSWARE OF:
CAMBRIDGE, HEISEY, FENTON, & FOSTORIA
Plus Art Pottery & a General Line of Antiques

DORIS AND ROY ISAACS
BUY AND SELL
614-872-3720



7525 EAST PIKE
NORWICH, OHIO 43767

MON THRU SAT 10-5:30 SUN 12-5:30
SUMMER EVENING HOURS BY CHANCE

GREAT LAKES DEPRESSION GLASS CLUB



Fifteenth Annual Show & Sale

April 28th
Saturday
10 a.m. - 5 p.m.

April 29th
Sunday
11 a.m. - 4 p.m.

Oakland University
Rochester, Michigan
I-75 at University Drive Exit

Donation \$2.00

J. D. Hanes

308 N. 6th Street, Cambridge, OH 43725
Phone 614/432-6794

CROWN TUSCAN

#702 miniature cornucopia	\$ 15.00
#SS34 3" 3-toed ashtray	\$ 10.00
#SS33 4" 3-toed ashtray	\$ 15.00
#SS18 10" 3-toed bowl	\$ 50.00
#SS2 7" salad plate, Charleton flowers & gold, slight wear on gold	\$ 35.00
#1238 12" ftd. vase	\$ 45.00
#3400/35 11" 4-ftd. bowl	\$ 40.00
#SS1 8" 4-ftd. oval dish	\$ 30.00
#3500/55 6" 2-hdld. ftd. basket	\$ 30.00

MISCELLANEOUS

Crystal paperweight, "Old Home Week 1921"	\$ 35.00
#1237 9" ftd. vase, amber top, crystal stem & foot	\$ 30.00

UPS and INSURANCE EXTRA



ANTIQUÉ SHOW & SALE

(& 17th Annual NCC Convention)

SHENANDOAH INN
INTERSTATE 70 - EXIT 186 - 7 MILES EAST OF
CAMBRIDGE OHIO

JUNE 22, 23, 24, 1990

FRIDAY, JUNE 22nd (PREVIEW ADMISSION \$3.50)	5:00-8:00
SATURDAY, JUNE 23rd	11:00-6:30
SUNDAY, JUNE 24th (ADMISSION \$2.00)	11:00-4:00

OFFERING CAMBRIDGE AND OTHER FINE GLASSWARE
including Heisey, Imperial, Fenton, Dundas, Tiffin, etc.

SPRINGFIELD

Antique Show & Flea Market

Clark County Fairgrounds

SPRINGFIELD, OH

Exit 59 on I-70

400-800 DEALERS

INSIDE AND OUTSIDE

Ohio's largest year round show with an emphasis on quality antiques

9:00 AM - 5:00 PM

Admission \$1.00

Children under 12 FREE

NEXT SHOW

APRIL 21 & 22, 1990

1990 SHOW DATES

MAY	18-19-20	Extravaganza
JUNE	16-17	Inside & Outside
AUGUST	18-19	Inside & Outside
SEPT.	14-15-16	Extravaganza

BRUCE KNIGHT, MGR.

For Information Write
P.O. Box 2429, Springfield, OH 45501
Phone (513) 325-0053

The DAZE

***SPECIAL OFFER**
to NCC friends \$2. off
the 1 year subscription
price when on this form
or copy of.

The Original National monthly newspaper dedicated to the buying, selling & collecting of colored glassware and china including Depression Glass and the Elegant Glass (Cambridge, Heisey, Postoria, etc.) We educate and inform you each month with feature articles by top notch columnists, readers "finds", club happenings, show news and a multitude of ads. Find those missing pieces to your 30s, 40s or 50s pattern. Can't identify it? Perhaps we can help "Keep up with what's happening with a subscription to the DAZE. Buy, sell or trade from the convenience of your easy chair.

Name _____ Street _____

City _____ State _____ Zip _____

1 yr \$17 2 yrs \$33 \$2. Single Current Copy

Exp date _____ Card No. _____

Signature _____

Orders to D.G.D., Box 57NC, Otisville, MI 48463

Please allow 30 days for your first issue - Canadian subscribers, add \$1. per year and subscribe by charge card only! This Special Offer may not be combined with any other special offer.

COLUMBUS ANTIQUE FLEA MARKET (ANTIQUES & COLLECTIBLES)

Ohio State Fairgrounds - Lausche Building
Off I-71 Exit 17th Avenue - Columbus, Ohio

APRIL 22nd

Sunday Only - 7 A.M. to 4 P.M.
Show Admission \$1.50 - Under 12 Free
150 QUALITY DEALERS

SELLING Advertising Art Deco, books, Cambridge, clocks, coins, collectibles, Depression glass, dolls, Fiesta, fine early furniture, Heisey, jewelry, lamps, oak furniture, post cards, pottery, good primitives, tools and print shop items.



4214 North High Street, Columbus, Ohio 43214
(614) 267-8163 (614) 263-6830 (614) 885-2352

NEXT SHOW: May 13, 1990



DEALERS



DIRECTORY

NOTE: When writing to the Dealers listed here, please enclose a SASE!

<p>MILBRA'S CRYSTAL MATCHING P.O. Box 363, Rio Vista, TX 76093 Milbra Long 817 / 645-6066 FOSTORIA * CAMBRIDGE * HEISEY * DEPRESSION ERA GLASSWARE BUY and SELL</p>	<p>BENICIA ANTIQUE SHOP 305 First Street Benicia, California 94510 OPEN 11 AM - 5 PM Closed Monday Z. E. LOPES 707-745-0978</p>	<p>THE MUTED SWAN ANTIQUES 5486 Peachtree Rd. Chamblee, GA 30341 Heart of Chamblee Antique Row Specializing in Cambridge, Heisey and Fostoria Bill & Pat Miller 404-451-7620</p>
<p><i>YOU CAN ADVERTISE YOUR ANTIQUE SHOP HERE!</i></p>		
<p>THE GLASS URN 456 West Main Street, Suite G. Mesa, AZ 85201 602 / 833-2702 Mail Order Shows Open Shop CAMBRIDGE, FOSTORIA, HEISEY, ETC.</p>	<p>ANTIQUES ON THE MALL SPECIALIZING IN CAMBRIDGE GLASS Stagecoach Mall - Bldg. 3 - Norwich, OH Virginia Bennett 614/432-4483 64183 Warne Drive, Cambridge, OH 43725</p>	<p>BERKELEY ANTIQUES 69 Berkeley St., Boston, MA 02116 OPEN: Monday thru Saturday 11 AM to 5 PM GEORGE & FRANK 617/426-1048 DUNCAN, CAMBRIDGE, HEISEY, GENERAL LINE</p>
<p>ETTELMAN'S DISCONTINUED CHINA & CRYSTAL Cambridge a Specialty P.O. Box 6491-CB Corpus Christi, TX 78466 Phone (512) 888-8391 Include S.A.S.E.</p>	<p>D & D ANTIQUES Columbus, Ohio DICK SLIFKO SHOWS ONLY</p>	<p>BUYING COLORED GLASS (Send List with Prices) FEDERAL HILL ANTIQUES 78 Maple Street Bristol, CT 06010</p>
<p>THE GLASS CUPBOARD 39 Shire Oaks Drive Pittsford, New York 14534 Marcia Ellis Cambridge, Duncan Miller (716) 586-7596 Shows, Mail Order, Appt.</p>	<p>JUDY'S ANTIQUES Judy Bennett 422 S. Ninth Street (Corner of Jefferson) Cambridge, Ohio 43725 BUYING Ph. 614-432-5855 SELLING Cambridge Glass my Specialty</p>	<p>"HAPPINESS IS" The Stultzs 3108 Warren Court Glen Allen, VA 23060 SHOWS & MAIL 804-672-8102 (RICHMOND AREA) AMERICAN MADE GLASS CIRCA 1890-1980.</p>
<p>"Days of Future Passed" 4 Newbrook Lane, Bayshore, L.I., NY 11706 LYNN DEZMAIN (516) 665-3890 Cambridge, Elegant Glass, D. G., Collectibles</p>	<p>GREEN ACRES FARM 2678 Hazelton Etna Rd., Pataskala, OH 43062 (State Route 310 North) Sat. & Sun. 1-7 PM 614/927-1882 Antiques, Crystal Glass and Collectibles</p>	<p>COSHOCTON ANTIQUE CENTER 309 South 4th Street Coshocton, Ohio 25+ Dealers - Open 10-6 (Closed Mon, Winter) Glass Restoration & Chair Caning 614 622-3223</p>
<p>THE HITCHING POST 7467 S. R. 88 Ravenna, OH 44266 Ph. 216-296-3686 D. McDaniel CAMBRIDGE — HEISEY — GENERAL LINE</p>	<p>PATCHES OF VIRGINIA Specializing in China and Glass Virginia T. Houston 34116 Roberts Rd., Eastlake, OH 44095 Phone: (216) 975-8315</p>	<p>CRYSTAL LADY 1819 Vinton St., Omaha, NE 68108 Joann D. Hagerty Bus. (402) 341-0643 Res. (402) 391-6730 Specializing in Elegant Glass & Collectibles</p>
<p>JOHN C. WOLFE, JR. Visual Display, Suite S 592 E. Main St., Columbus, OH 43215 CAMBRIDGE, A SPECIALTY VINTAGE WRISTWATCHES</p>	<p>REMEMBRANCES 7597 Daphne Dr., No. Syracuse, NY 13212 Shirley S. Ladouceur 315 / 458-5297 ANTIQUES and COLLECTIBLES MAIL ORDER SHOWS APPOINTMENTS</p>	<p>MARGARET LANE ANTIQUES 2 E. Main St., New Concord, OH 43762 Lynn Welker 614/826-4418 CAMBRIDGE GLASS MATCHING SERVICE Hours Mon.-Fri. 1-5 PM or by Appointment</p>
<p>GLASS RESTORATION BRILLIANT CRYSTAL ELEGANT DEPRESSION DON & LYNNE WORMLAND MT. CLEMENS, MICH. (313) 791-9191</p>	<p>WATKINS (Fine Quality) CAMBRIDGE GLASS SHOP 1429 Marquand Ave., (Corner of Woodlawn) Cambridge, OH (614) 432-4460 Lana Watkins</p>	<p>BUD'S TRADING POST GENERAL STORE — FLEA MARKET 501 Wheeling Ave. Cambridge, OH 43725 10-5 Mon. thru Sat. 614-432-4688 CAMBRIDGE - PATTERN - ART GLASS This Bud's for Y'all</p>



National Cambridge Collectors, Inc.
P O Box 416, Cambridge, Ohio 43725

A nonprofit organization dedicated to the preservation and study of Cambridge Glass

You Are Cordially Invited
To Become A Member Of The

NATIONAL CAMBRIDGE COLLECTORS, INC.

Benefits derived from membership include: receipt of our club publication, The Cambridge CRYSTAL BALL; informative Quarterly Meetings; Antique Shows; Auctions; other special events; and unlimited admission to the museum.

The Cambridge CRYSTAL BALL is published the first of each month. This newsletter contains educational and interesting articles, questions and answers, information on reproductions and reissues, notices of all club functions, classified advertisements, dealers directory, and many other features of interest to collectors of Cambridge Glass. Yearly dues are \$15.00 for Individual Members and \$3.00 for each Associate Member. All members have voting rights, but only one issue of the CRYSTAL BALL will be mailed per household.

Name (please print) _____ \$15.00

Mailing Address _____

City _____ State _____ Zip _____

Associate Members: (Must be at least 12 years of age and living in the same household.)

1. Name _____
 2. Name _____
 3. Name _____
- Total number of Associate Members _____ @ \$3.00 each \$ _____

TOTAL AMOUNT ENCLOSED: \$ _____

Please make check payable to: NATIONAL CAMBRIDGE COLLECTORS, INC.

Recommended by _____

VISIT YOUR MUSEUM of CAMBRIDGE GLASS

ATTENTION --- NEW MUSEUM HOURS

Wednesday thru Saturday - 10 AM to 4 PM
Sunday - 12 noon to 4 PM

Closed Monday & Tuesday - Easter & July 4th



APRIL 1990

Flower — Sweet Pea • Birthstone — Diamond

National Cambridge Collectors, Inc.
P. O. Box 416 Cambridge, Ohio 43725

FIRST-CLASS MAIL
U S POSTAGE
PAID
So. Vienna, Ohio
45369
Permit No. 15

FIRST CLASS MAIL

Membership Renewal Notice

This is your **last** issue of the *Crystal Ball*—if the date on your address label reads 4-90.

Please renew now!