



Cambridge Crystal Ball

Published monthly by the National Cambridge Collectors, Inc.
to encourage and report the discovery of the elegant and boundless product
of the Cambridge Glass Company of Cambridge, Ohio

Issue No. 182

June 1988

**Welcome To
CAMBRIDGE**

City of Cambridge

NCC Museum

Joy, Willard & Mark

LARGEST INTERCHANGE IN WORLD (I-70 & I-77)

Guernsey County Fairgrounds

Old Washington

Shenandoah Inn

**13th Annual
NATIONAL
CAMBRIDGE
COLLECTORS**

ANTIQUE SHOW & SALE
(& 15th Annual NCC Convention)

SHENANDOAH INN
INTERSTATE 70 -- EXIT 186 -- 7 MILES EAST OF
CAMBRIDGE, OHIO

Shenandoah Inn
P.O. Box 147, Old Washington, Ohio 43768
Phone - 614-489-5511
(Interstate 70 - Exit 186 - 7 miles East of Cambridge, Ohio)
Mention NCC when making reservations

June 23-26, 1988

IMPORTANT - DEADLINE DATES TO REMEMBER!

JUNE 13th - Convention Registration must reach us!
Please mail early.

JUNE 17th - Ballots must be returned!

Cambridge Crystal Ball

Official publication of National Cambridge Collectors, Inc., a non-profit corporation with tax exempt status. Published once a month for the benefit of its members.

Membership is available for individual members at \$13 per year and additional members (12 years of age and residing in household) at \$3 each. All members have voting rights, but only one *Crystal Ball* will be mailed per household.

Back issues of the *Crystal Ball* are available (beginning with Issue No. 1, May 1973) for members only. Cost: 60 cents each or 12 issues for \$7.

1987-88 Officers & Committee Chairpersons

President	Willard P. Kolb
Vice-President	Mark A. Nye
Secretary	Janice Y. Hughes
Treasurer	William C. Smith
Sergeant-at-Arms	Marybelle Moorehead
Budget & Finance	David B. Rankin
By-Laws	J.D. Hanes
Convention	Mark A. Nye
Membership	Phyllis D. Smith
Museum	Billy F. Harbaugh
Program & Entertainment	Marlene K. Snyder
Project	Willard P. Kolb
Public Relations	William C. & Phyllis D. Smith
Publicity	Joseph Andrejcek
Study Group Advisor	Phyllis D. Smith
1988 Auction	Lynn M. Welker
1988 Antique Show	Joy R. McFadden
1988 Flea Market	Marybelle Moorehead
Crystal Ball Editor	Phyllis D. Smith

Classified Advertising Rates

5 cents per word \$1.00 minimum
 We cannot mix type size in classified advertisements. Abbreviations and initials will count as words. Payment in full must accompany all ads.

Display Advertising Rates

(Camera-ready ads preferred)	Members	Non-Members
1/8 page (9 items)	\$ 4.00	\$ 6.00
1/4 page (20 items)	7.00	10.00
1/2 page (20 items)	12.00	18.00
3/4 page	17.00	25.00
Full page (50 items)	22.00	33.00

Dealers Directory

Five-line maximum \$12.00 for 12 months

Cambridge *Crystal Ball* assumes no responsibility for items advertised and will not be responsible for errors in price, description or other information.

Advertising copy, articles, club news and notices must be in our hands by the 10th of each month to assure publication in our next issue.

Paid advertisements containing reproductions or new glass will not knowingly be accepted for publication.

Opinions or information stated in any signed article or letter printed in the *Crystal Ball* are those of the authors and may or may not agree with National Cambridge Collectors, Inc. The Editor reserves the right to refuse and to edit any material submitted for publication so as to conform with the editorial style of the *Crystal Ball*.

Please Address All Correspondence to:

National Cambridge Collectors, Inc.

P.O. Box 416 Cambridge, Ohio 43725

President — Willard Kolb, 614/695-0695

Secretary — Janice Hughes, 614/432-7823

Editor — Phyllis Smith, 513/323-3888

NCC Museum of Cambridge Glass is located on U.S. Route 40, one-eighth mile east of I-77 near Cambridge. Hours: 12 noon to 4 p.m., Wednesday through Sunday (March through October). Closed Easter and July 4th.

Please notify us immediately of any change in your address.

Please enclose an SASE when requesting information.

CAMBRIDGE GLASS BOOKS FOR SALE

by National Cambridge Collectors, Inc.

* **COLORS IN CAMBRIDGE GLASS**
 (128 pages - 60 color plates - fully indexed)
 Hardbound with Price Guide \$19.95

* **1930-34 CAMBRIDGE GLASS CO. CATALOG REPRINT**
 (250 page reprint of original catalog)
 Hardbound with Price Guide \$14.95

* **1949-53 CAMBRIDGE GLASS CO. CATALOG REPRINT**
 (300 page reprint of original catalog)
 Hardbound with Price Guide \$14.95

* **1956-58 CAMBRIDGE GLASS CO. CATALOG REPRINT**
 (164 page reprint of original catalog)
 Paperback \$6.95

1985 COMBINED PRICE GUIDE
 for 1930-34 & 1949-53 catalog reprints Postpaid \$5.75
 *NCC MEMBERS ONLY: These publications are available at 10% discount - or all four (4) at one time for \$50.00.

by Bill & Phyllis Smith

CAMBRIDGE GLASS 1927-1929
 (66 page reprint of original catalog)
 Paperback with Identification Guide \$7.95

by Mark Nye

CAMBRIDGE STEMWARE
 (95 Stemware lines with 107 illustrations)
 Paperback \$14.95

by Cambridge Buffs Study Group

NEARCUT
 (108 page reprint of 1910 Cambridge Catalog)
 Paperback with Price Guide \$9.95

by Mary, Lyle and Lynn Welker

CAMBRIDGE GLASS CO.
 (120 pages of reprint from 8 old catalogs)
 Paperback \$6.95

CAMBRIDGE GLASS CO. BOOK II
 (190 page reprint from old catalogs)
 Paperback \$6.95

CAMBRIDGE, OHIO GLASS IN COLOR II
 Spiralbound \$5.95

by Harold and Judy Bennett

1903 CAMBRIDGE GLASS CO. CATALOG REPRINT
 (106 page reprint of an original catalog)
 Paperback \$7.50

Address your orders to:

BOOKS
 National Cambridge Collectors, Inc.
 P.O. Box 416
 Cambridge, OH 43725

Please add \$1.00 (P & I) per order.
 (Not required for Price Guide)

Ohio residents please add 6% state sales tax.

DEALER DISCOUNTS AVAILABLE - PLEASE WRITE!

**THOUGHTS from
PRESIDENT WILLARD KOLB**

Well, "June is bustin' out all over," and Convention mania has begun. Beginning in a few days is the: Fostoria Convention (June 3-5), followed by the Imperial (June 11-12), Heisey (June 16-19) and, of course, Cambridge (June 23-26). There shouldn't be too many dull moments for all of you enthusiasts. What's more, the National Depression Association Convention will follow in July (9-10), Duncan on July 23-24, and then Fenton will close the Convention season the weekend of August 9-12. In September (17-18) the Tiffin Club will sponsor a Show & Sale.

Many of you, I know, attend several of these conventions and their associated activities, but for those of you who have to chose only one, we hope you will opt to attend the Cambridge Convention and help us celebrate our 15th Birthday!

Your Reservation form was in the May issue. If you haven't sent yours in already, you've missed out on the "Special Drawing." Don't let this deter you, however, because there will be plenty of other advantages for those of you who attend. Don't forget, the deadline for getting your Reservation(s) in is June 13th. Read the Reservation form carefully and try to fill in all the information needed. This will help Mark Nye tremendously in getting all of the correct information recorded in the computer.

Don't forget to volunteer for an hour or so of help with the Display room, Show gate, sales table, or any of the other areas where help is always needed.

We've been doing some work at the Museum now, especially outside. Some work parties have been formed to work in the Storage building, cleaning and identifying molds. We got the grass cut for the first time this year, and will try to do some other sprucing up soon. (No, we didn't wait until June to cut the grass, I'm writing this on May 3rd.) We had a water line break near the Museum and it made quite a mess getting it repaired.

Another big problem we've had is the amount of traffic that is using our driveway for a turnaround. Cars are bad enough, but tractors and trailers have been using it and tearing up our property. One got buried in the area that

we had fenced off, and had to be pulled out by a wrecker. That did quite a lot of damage. Posting signs does no good. It seems that no one can read or "just don't give a damn!" We had put up a chain across the driveway some-time ago, but even that didn't deter them. It was run into and over a couple of times and finally someone just cut it off the posts and stole it! It's hard for me to understand why people think there is no such thing as "private property."

To add to this problem, we now have neighbors on the property immediately to the west of us. Someone bought the property and they are putting up storage buildings. This is fine, but the contractors and owners seem to think that our property is there for them to use as parking. Also, if you are coming from the west to the Museum, you won't be able to see it, because these buildings are built right up to the State property line on Route 40. Supposedly there is a rule with the State that you cannot put a building within so many feet of State property. Somehow, this rule got waived in this case. For those of you who have visited the Museum, you'll remember that there was a small creek that was the dividing line between our property and the lots where these storage buildings are going up. Well, they put in a culvert and filled over it, leveling off our property with theirs. This, I think, was a good thing for us, as we always had trouble keeping that area looking nice due to the mowing problem.

The bottom line is, we will now have to put up a chain link fence between the properties to keep traffic from going back and forth between the two properties. While we are at it, we will put up chain link gates across our driveway - something we have needed to do anyway. I just wonder how long it will be before someone runs over or steals them!

Don't forget: mark you Ballot, and your Reservation form, and return them. Look forward to seeing you at Convention. **WILLARD**



**MUSEUM HOURS EXTENDED
Convention Week**

The N.C.C. Museum will be open every day during Convention week - June 20 to 26.

Hours: 12 noon to 4 pm

Convention Update

by MARK A. NYE
Convention Chairman

REMEMBER! The deadline for Convention Registration is June 13th - that is, your Registration must have been received by that date, so allow a few days for the U.S. Postal Service to perform its duty.

Your Registration form was included with your May CRYSTAL BALL. Please, read the form carefully, fill in the information requested, including your membership number, and return it as soon as possible. If by chance you have lost your form, an additional copy may be obtained by calling (305) 221-0343 - evenings only, but act soon. Note, you must register for the Thursday Night Party even though there is no charge for this event. An admission ticket is required to attend and we do need to plan for the correct number of attendees.

Again, a reminder, we need glass for the display room. Please send your list today to the attention of: Display Room Chairman, N.C.C., Inc., P.O. Box 416, Cambridge, OH 43725. All letters will be acknowledged. When you bring glass to the Display room, it must be labeled with your name and, for insurance purposes, be accompanied by a list showing your value of each item. All glass loaned to the club for display is insured.

As I said last month, we do need donations for the Silent Auction on Thursday night, and for the Mini-Auction (not so silent) on Friday night. For Thursday night a piece of Cambridge glass from the 1950s would be appropriate. Friday night, that is a different story. Anything that will raise money for N.C.C. is fair game, but the emphasis should remain on Cambridge glass. Just think back to some previous mini-auctions and I am sure you will get inspired to perhaps donate an unusual item!

And, as always, we need console sets or bowls of any size and candleholders for use in decorating the Banquet tables. Since the theme of the Convention is the 1950s, patterns from the 1950s are the preferred choice, but any Cambridge glass will be acceptable. There is, waiting in the wings, a stack of plastic bowls which will be used should we ever fail to have enough glass loaned! Please, don't make us use plastic on N.C.C. Convention Banquet tables!

Items for use on the Banquet tables may be brought to the Convention office any time it is open during the week, or to the Banquet room itself on Saturday morning. You may take your loaned bowls, etc., with you, immediately following the Banquet.

Motel reservations, regardless of where you plan on staying, should be made soon. The Shenandoah Inn and the in-town motels do fill up in advance, so to avoid not having the site of your choice, or worse, no room at all, make your reservations early.

A preliminary Convention schedule was published in the April and May issues of the CRYSTAL BALL and the final schedule remains essentially the same. A copy of the final schedule will be included in your Registration packet. The Convention office opens at 10 am on Thursday morning and glass for the Display room will be accepted beginning at that time and again on Friday morning.

Programs will begin at 11 am on Friday morning and run through 4 pm. Three programs, not previously seen, will be presented Friday afternoon and again on Saturday.

Another reminder, Friday night, in addition to being the opening session, is also the N.C.C. Birthday Party with 1950s dress optional. As a part of the festivities, we would like you to give a Birthday Gift to N.C.C. in the form of glass for the Museum. Any item, large or small, rare or common, clear or in color, Near Cut Era or 1950s, would be appropriate and appreciated. Birthday gifts may be brought to the Convention office anytime it is open and all gifts will be on display in the office and as time and space permits at the Party.

Please note that the doors to the upstairs Banquet room will not open until 7:45 pm - 15 minutes prior to the scheduled starting time for the Friday night session; and on Saturday night they will open promptly at 6 pm for the President's Reception, with the Banquet scheduled for 7 pm.

And, as always, we need VOLUNTEERS to work in the Display Room as well as at the Book Table, to help with the programs, to work in the Convention Office, and to take tickets at the food functions. This is your opportunity to help YOUR organization . . . so volunteer for an hour or two.

JUNE 1988 -- CAMBRIDGE or BUST!

CONVENTION SPEAKERS

Reservations are coming in rapidly for our Convention - especially for our Saturday morning Breakfast and Saturday evening Banquet. We attribute this response to our three outstanding Convention speakers.



FRANK M. FENTON

Our Saturday evening Banquet speaker will be Frank M. Fenton, former President and Chairman of the Board of The Fenton Art Glass Company, Williamstown, West Virginia. His topic for the evening will be "A Potpourri of Glass, 1901 - 1954."

Mr. Fenton was born in Williamstown, West Virginia, December 1, 1915. He was educated in Williamstown and Marietta schools, and Marietta College.

Upon graduation from Marietta College in 1936, he began his employment at The Fenton Art Glass Company. He became President of the company in 1949 and continued in that capacity until 1978. He was Chairman of the Board of The Fenton Art Glass Company from 1978 to 1985.

He has been active in community affairs in both Marietta and Williamstown. He is a Trustee of Marietta College and is active in the First United Methodist Church of Williamstown.

He married Elizabeth Ripley in 1938 and there are four sons: Frank, Thomas, Michael and George. Tom, Mike and George are all em-

ployed at The Fenton Art Glass Company. George is the President of the company at this time.

Mr. Fenton has made numerous talks on the various aspects of Fenton glass, and we look forward, with great pleasure, to having him as our Banquet speaker!

GEORGE FOGG and FRANK MALONEY

Our Saturday morning speakers, George Fogg and Frank Maloney, having participated as show dealers for many years, are no strangers to many of our Convention goers.

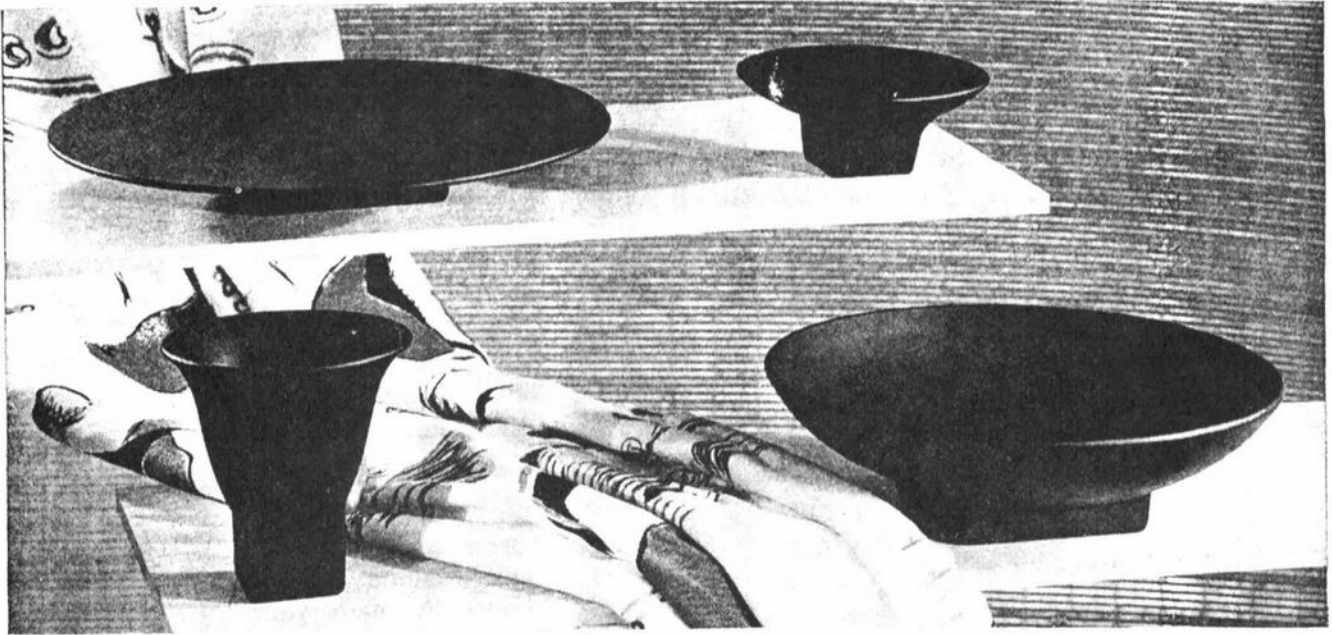
When not operating an antique shop in Boston, Massachusetts, they are often found travelling around the country collecting and researching the production of a number of American glass manufacturers. Active members in a dozen glass collector's clubs, they are always seeking the unusual in glass.

George and Frank sometimes don't consider themselves the serious dealers they might be because they would like to keep the more interesting glass for their own collections. Not having selected only certain patterns or items, they gather a little of everything much like stocking Noah's Ark. Going to Cambridge is like coming home for these Bostonians. For them half the fun of the convention is seeing the beautiful glass and the other half is renewing old acquaintances and meeting new collectors.

They have missed few Cambridge conventions since the year George confused everyone by arriving "on foot," having travelled by plane and bus to attend the first convention.

Having recently co-authored and published a book on the glass production of George Duncan & Sons, Pittsburgh, Penna., 1874-1892, they are contributors to many glass publications, including the CRYSTAL BALL. Frequent lecturers at many New England museums, galleries, glass clubs and antiques associations, they have been Banquet speakers at both the Heisey and Duncan National Conventions. They were the original founders of the Bay State Heisey Collector's Club.

continued on page 11



What is black & white . . . *and sold all over?*



Ebon and Milk Glass by Cambridge

Something old . . . something new . . . and both of them with the kind of buy appeal that gives a real boost to glassware department sales.

Velvety, ultra-smart *Ebon* with the sleek modern lines and distinctive square cut base that made famous Cambridge Square a top seller. Twenty eye-catching shapes that are proving as popular with customers as wise buyers predicted.

Charming, traditionally popular *Milk Glass* in new shapes handcrafted by Cambridge to provide a line of nearly 75 pieces for table service, for decoration, for gift giving.

Immediate delivery on both lines. Phone or wire your Cambridge representative today.
The Cambridge Glass Company,
Cambridge, Ohio.



Visit our showroom, 212 Fifth Avenue, during the New York Show, July 18-23; also at 1547 Merchandise Mart, Chicago, August 2-13.

Cambridge in the 1950s

PART II

by MARK A. NYE

As the 1940s were drawing to a close, specifically June 1949, the Cambridge Glass Co. issued their first complete general catalog since January 1940. Little did anyone realize at that time this catalog along with its numerous supplemental pages would be the last to be issued by the original management of the company. The fates would not be kind to Cambridge and it would go the way of so many other glass houses (Heisey being a good example) before the 1950s were half over.

Except, after the Cambridge Glass Co. closed, it was sold and then reopened under its new owners; and did operate for a few more years, during the second half of the 1950s. It is not the intend of this article to dwell on the original 1954 closing. Rather, we return to the early days of the 1950s and the months and years leading up to 1954 to take an overview look at the types of wares being produced during those years.

The only major Cambridge line from the 1930s to continue into the 1950s and feature stemware, dinnerware, flatware and accessory items, was Caprice. This is indicative of the popularity this pattern enjoyed over the years. Shown in the 1949 catalog was the original #300 stemware line: four plates (salad, bread & butter, luncheon and dinner), the cup and saucer, and a wide assortment of serving and accessory items.

During the early 1950s a few new items were added to the Caprice line. These included: a new line of stemware, the #301, which used the Simplicity shape; the cake plate; and the quarter pound butter dish. The latter butter dish was not introduced until just before the original plant closing.

A complete Caprice line, as offered in 1950, was available in crystal and moonlight and seventeen accessory and decorative items were also available in crystal and moonlight alpine.

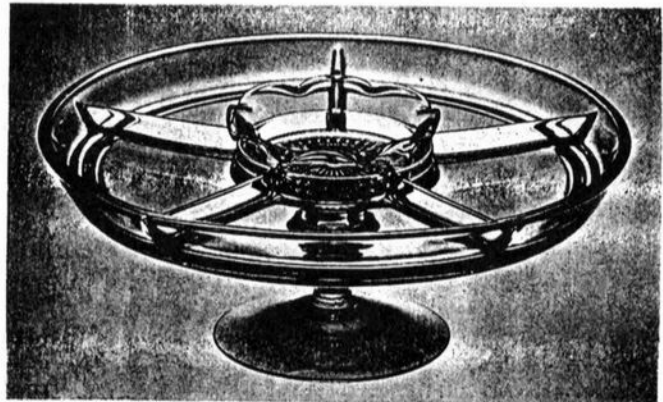
Another old friend from the 1930s still around as the 1950s dawned, was Mount Vernon. But, by then, the line was limited to stemware, covered urn, cup and saucer, finger bowl,

fruit saucer, and salad and bread & butter plates. Production of this line in the 1950s was limited to crystal.

The Pristine line made a comeback during the late 1940s and early 1950s, having been discontinued during the years of WW II; and a complete dinnerware set, as well as stemware, once again became available in this pattern. During the early 1950s this line featured such items as: a 3-piece relish server that used a candlestick as its base, and a 5-piece castor set that also used the same principle.



Seven-piece condiment set includes tray with pedestal, vinegar and oil cruets, mustard jar, salt and pepper. Retails for \$9. Cambridge.



UNIQUE RELISH server, revolves on the Lazy Susan principle. Center dish holds sauce, partitions are for hors d'oeuvres. Three-piece item retails for \$5, and is patented. Cambridge Glass Company, Cambridge, Ohio.

MARCH 1950 CHINA. GLASS AND DECORATIVE ACCESSORIES

With a few exceptions, to be mentioned later, the Pristine line of the 1950s was made only in crystal.

Cambridge ware of the 1950s did include a few items from two other major lines - #3400 and #3500. The most notable of which is the

continued on next page

CAMBRIDGE 1950s . . continued from page 7

#3400/52 butter and cover. The bulk of these lines, however, were discontinued during the 1940s.

During the early 1950s, the familiar etchings of Candlelight, Chantilly, Diane, Elaine, Rose Point, Portia and Wildflower, continued to be a mainstay of Cambridge production. Another etching from the 1930s, Vichy, played a much smaller role, showing up only on some barware. During this period, these etchings were placed only on crystal blanks; however, selected items could be had gold encrusted or with a gold rim band.

The etchings continued to be available on complete stemware and dinnerware lines and while much of the stemware lines were from earlier years, the blanks for dinnerware and accessory items now came primarily from the #3900 or Corinth line. The number of available items with each etching was notably decreased from that available during the prewar years, but sufficient items remained to fulfill the needs of most, if not all, discriminating hosts and hostesses.

The last known printed price list was issued in October 1953, and by then Portia and Candlelight had been discontinued. Three new etchings brought out during the final years of the original company were: Daffodil, Roselyn and Magnolia. None of these were available in complete dinnerware sets, and Magnolia was the smallest set of the three. Stemware was produced bearing all three etchings, but lack of a dinner plate made these lines incomplete, when it came to flatware.

Stemware lines held over from the 1940s and before, included: #1066, #3111, #3121, #3130, #3500, #3122, #3139, #3776, #3700, #3725, #3750, #3775, #3600, #3625, Regency, and others. The age of color was over, however, and with only a few exceptions, stemware during these years was limited to crystal. The #3103 line was revived and produced in carmen, for example, and a very early line, #1401, was brought out in emerald and mandarin gold.

Color apparently never completely disappeared from the Cambridge line. At the beginning of the 1950s, amber, amethyst, moonlight, crown tuscan and, to a very limited extent, gold krystol, were in production. At this time color was used mainly for vases, candlesticks, tumb-

lers, decanter sets, and smoker items. Mandarin gold and emerald (late) were brought out in the summer of 1949, and carmen and ebony were brought back into the line before the Fall of 1950. Produced in carmen during 1950 were such items as the #1040, #1042 and #1043 swans; the #3011 Nude cocktail; and the #3400/92 Ball decanter, among others. Ebony was used to manufacture ashtrays, a few items from the Pristine line, including the #P492, #P493 and #P495 block shaped candleholders, and a variety of vases, bowls and assorted items from other lines.

Color production did decrease and the last published price list failed to mention moonlight, crown tuscan, gold krystol, carmen, and ebony.

The Cascade and Corinth lines made their debuts prior to the start of the 1950s but continued to play an important role in the Cambridge line during the early 1950s. The Corinth line was the major blank used by Cambridge for etching during the 1950s, replacing the #3400 and #3500 lines, and came in stemware, dinnerware, serving and accessory wares. Corinth stemware, however, is not known etched.

Cascade featured stemware, flatware but no dinner plate, serving pieces, accessory items and a punch bowl. Somewhat diminished in the number of pieces available, Cascade was still listed in the final price list.

By far the most important ware to be introduced by Cambridge during the 1950s was the Cambridge Square line. The reader is referred to last month's article to read how the line was first introduced to the trade. Actually, the stemware lines had been introduced sometime prior to the dinnerware and accessory lines. Cambridge Square remained a major part of the Cambridge line right up until the initial closing and again during the reopen period. More on the Cambridge Square line in a future article.

Rock Crystal engravings also played an important role in the Cambridge story during the last years of the company as they had over the years. Well over 50 different engravings appear in the 1949-53 catalog and include such well known favorites as: Adonis, Achilles, Croesus, and Laurel Wreath, along with many dating to the 1940s and 1950s. Many

continued on next page

CAMBRIDGE 1950s continued

Rock Crystal engravings appeared on stemware during this period while others were limited to a few pieces of barware or tumblers. A future article will take a more in-depth look at engravings during the 1950s.

It was during these years that the celebration, in 1952, of the Cambridge Glass Company's 50th Anniversary took place. The first piece of glass having been made in the spring of 1902. Advertising during the 50th year made prominent mention of the anniversary. (Note use of 50th year emblem on advertisement shown here.)

During the first half of 1954 two new lines were introduced. Ebon, a matte finished ebony, and milk glass. (Please refer back to page 6 of this issue to view one of, if not the last, advertisement published prior to the initial plant closing.)

Existing molds, created for the Cambridge Square line, were used for this new ebon color, and new molds were not made. Likewise, none of the molds used in the production of milk glass were new, or at the very least they did not produce new shapes. They were new in the sense that the items being offered had not before been seen in milk glass; however, all the pieces shown in the Milk Glass line were items from existing Cambridge lines - Everglade, Mount Vernon, and Cascade, to mention three.

This is, by no means, a comprehensive look at the complete Cambridge catalog for the years 1950-54. It does give the reader a broad picture of what was being produced during that period. Many previous articles, such as the series on Butter Dishes, Punch Bowls, Decanter's and the, just concluded, one on Vases; as well as those dealing with specific lines such as Cascade and Corinth and individual Etchings, dealt with production of these items during the early 1950s. The interested reader is referred to these articles for specific information about production in the 1950s.

EDITOR'S NOTE: Anyone interested in any article referred to in this article may order same by sending \$1.00 for each issue (just mention the title(s) you are interested in) to: N.C.C., Inc., P.O. Box 416, Cambridge, OH 43725.



favorite of brides for 50 years

"Corinth" hand-blown goblet

Crystal by Cambridge

Give this most beautiful of crystal as it has been given to brides for 50 years—as a gracious compliment to her good taste and yours. Give it thoughtfully, with the assurance that she can always, and inexpensively, add to her pattern. For Cambridge patterns are available in as many as 70 different pieces of tableware and accessories —to season daily living—to spice bright hospitality.

Newest idea for the bride



To help her build up her pattern evenly, give Cambridge in individual place settings of goblet, sherbet and cocktail glasses, salad plate. Selection of plain, etched and engraved patterns from about \$5 to \$14 per setting. The Cambridge Glass Co. Cambridge, Ohio

fine American hand-made crystal



From BETTER HOMES & GARDENS Magazine
June 1951

NATIONAL CAMBRIDGE COLLECTORS, INC.

ANNUAL CONVENTION

June 23 - 26, 1988

UPDATED SCHEDULE of CONVENTION EVENTS

THURSDAY - June 23rd

- 10:00 am - Convention Office Opens in Room 101. Registration packets available for pick up.
Display Room glass accepted in Room 101.
- 5:00 pm - Convention Office Closes.
- 7:00 pm - Convention Chairman's Reception. Upstairs Banquet Room.
Registration Required. Cash Bar.

FRIDAY - June 24th

- 9:00 am - Convention Office Opens. Registration packets available for pick up in Room 101. Glass for Display Room accepted in Room 100.
- 11:00 am - Slide Programs begin.
- 4:30 pm - Book Sales Opens - Lobby lower level.
Display Room Opens.
- 5:00 pm - Antique Show Opens - **Ticket Required.**
- 6:00 pm - Convention Office Closes.
- 8:00 pm - Opening Session - Upstairs Banquet Room.
15th Birthday Party for N.C.C., Inc.
Cash Bar - Blue-Plate Special - Announcements
Mini-Auction. **Ticket Required.**

SATURDAY - June 25th

- 5:00 am - Dealer set up at Flea Market. **Admission Fee** for non-dealers.
- 6:00 am - Flea Market Opens - Site to be announced. **Admission Fee.**
- 8:00 am - Buffet Breakfast - Upstairs Banquet Room. **Ticket Required.**
- 9:15 am - Saturday Morning Program
Guest Speakers: **George Fogg and Frank Maloney.**
Topic: "Cambridge Glass - A 50/50 Proposition"
- 11:00 am - Antique Show Reopens. Book Sales reopens.
Convention Office reopens - Room 101. Display Room reopens.
- 11:30 am - Slide Programs Resume.
- 1:00 pm - Annual "Show & Tell" Program - Location to be announced.
Bring your interesting items for discussion and identification.
Leader: **Lynn Welker.**
- 4:00 pm - Convention Office Closes.
- 6:00 pm - President's Reception - Banquet Room Upstairs. Cash Bar.
- 7:00 pm - Annual National Cambridge Collector's Banquet. **Ticket Required.**
Guest Speaker: **Frank M. Fenton.**
Topic: "A Potpourri of Glass, 1901 - 1954"

SUNDAY - June 26th

- 9:00 am - Buffet Breakfast - Upstairs Banquet Room. **Ticket Required.**
Annual Meeting of National Cambridge Collectors, Inc. to follow.
- 12 noon - Antique Show Reopens. Book Sales Reopen. Display Room Reopens.
- 1:30 pm - Former Cambridge Glass Company Employees Reunion.
N.C.C. Museum. **Bill Smith** Coordinator.
- 3:00 pm - Display Room Closes. Pick up loaned glass.
- 5:00 pm - Antique Show and Book Sales Close.

SPEAKERS continued from page 5

George has been involved with English and American country dancing for years, first as a dancer, then as a teacher. He started his own dance group in 1968, which continues to this day; is past president of the Country Dance Society, Boston Centre; past Eastern Area Vice-President, served as membership representative and National Council Director of the Country Dance Society of America, Inc.; former director of the New England Folk Festival Association; former Bagman (secretary/treasurer) of the Pinewoods Morris Men as well as a member of the Black Joker Morris Men. These two teams have travelled to England and danced in front of Westminster Abbey where Queen Elizabeth gave a wave, and in many villages and towns from Flexstowe in Suffolk to Exeter in Devon. He performed with CDSSA at the New York World's Fair; has held workshops at dance camps in English and Early American dances from Williamsburg, Virginia, all the way up the east coast to Brunswick, Maine. Among the civic and fraternal organizations to which he belongs is the Patrons of Husbandry (Grange) where he has held offices and taken all seven degrees.

Both Frank and George were among the original founders of the Bay State Heisey Collectors Club. Frank was the first president and George was the third president.

Frank was employed by Boston's leading radio and television stations some 30 years, holding positions of producer, public service director, copy writer, and commercial manager; before deciding to devote fulltime to antiques and collectibles. Active in many business and civic groups he served for many years on the board of the National Early American Glass Club.

When Frank's TV duties called for some unusual displays that were not readily available through regular channels, he created his own design business. Discovering that one of his suppliers was multi-talent, Frank was quick to utilize George's abilities and they have collaborated since that time on many varied projects, especially in the glass field.

Their presentation at the Saturday morning breakfast bears the title "Cambridge Glass -- A 50/50 Proposition." It's bound to be different, informative, and entertaining.

SEND IN YOUR RESERVATIONS TODAY!

Former Worker's Reunion

by BILL SMITH

Our Fifth Annual Reunion of Former Cambridge Glass Employees will be held at the N.C.C. Museum on Sunday afternoon, June 26th, starting at 1:30 pm.

If you were an employee of the Cambridge Glass Company, please plan to attend. If you know of someone who was an employee, please tell them of this event and encourage them to attend. If you are a member of N.C.C. and would enjoy meeting these former Cambridge workers, you are welcome and encouraged to attend!

The number of persons attending these reunions has been increasing each year and all who have attended indicate that they have enjoyed the fellowship with these former fellow employees, many of whom they have not seen in years.

We encourage our club members to attend and help make it known that we appreciate the product that was produced by these former employees. It is also a great opportunity for learning more about how glass (especially Cambridge) was produced.

We hope to see you all at the Museum on Sunday afternoon!

YOUR HELP IS NEEDED!

Arrangements have been made to have the Museum Service Building open and attended each of the days (and evenings) during the week preceding this year's Convention, to accommodate any of you who wish to contribute of your time and energy!

Beginning Monday, June 20th.

Doyle Hanes will be at the Service Building during the day and J.D. Hanes will be there in the late afternoon and evening hours. Both of these men have knowledge of work needing to be done, and will direct operations.

Many of you have expressed an interest in helping with inventory and recording of the molds, snaps, etc.; sorting and filing of paper

continued on page 12

WORK PARTIES . . . continued from page 11

materials; and many of the other jobs that need to be accomplished. We are suggesting that "this is your opportunity!"

Please be advised that this is dirty work and dress accordingly. Both Doyle and J.D. are hopeful that enough of you will volunteer for this work to really keep them busy.

Study Club News

STUDY GROUP #8 - SOUTHERN MICHIGAN
"THE MICHIGAN CAPRICES"
Phone: 313/655-4703

On March 17th, the Michigan Caprices met at the home of Frank and Phyllis Hayes, with all members and one guest present.

The video program "Investing in Glass" by William Heacock, was shown. It was a treat to see all the beautiful glass. I thought he could have shown at least one piece of Cambridge, Heisey and Fostoria. Mr. Heacock did mention the marking of many pressed glass pieces, and some of the names, such as "Nearcut made by the Cambridge Glass Company." He did mention many helpful hints to those that have the glass habit. I think anyone that collects glass would enjoy seeing this video program.

For "Show & Tell" we had: a carmen #3400 Ivy Ball; an amethyst Gadroon divided mint or relish dish in a chrome base; an amber flip Decagon console bowl with Lorna etching; and some small plaques with the Club Logo made by Frank and Phyllis. A few of these are going into the N.C.C. Convention Mini-Auction on Friday night.

The meeting ended with dessert and coffee.
submitted by Phyllis Hayes

NEW GROUP - SOUTH WEST OHIO MIAMI VALLEY (OHIO)

The brand new Miami Valley (Ohio) area Study Group met for their second time, on Tuesday, May 10th, in the Huber Heights Library, Huber Heights, Ohio (near Dayton, Ohio). There were thirteen members present.

Discussion centered around our application to

N.C.C. for approved status as a Study Group. All members discussed the coming Convention and activities. It was decided that various members of our group will contribute cookies for the Former Workers Reunion at the Convention.

Our program for the evening included the viewing of the N.C.C. slide program on "Cambridge Colors." Our next meeting will be held September 13th at the Huber Heights Library - 7 to 8:30 pm. Interested members from the area are invited to attend.

submitted by Vicki Wollenhaupt

NATIONAL GLASS CLUBS MEETING HELD

The Spring meeting of the National Glass Clubs, hosted by the Fenton Art Glass Collectors of America, was held April 16, 1988, in Marietta, Ohio. Present at the meeting were representatives of the Cambridge, N.D.G.A., and Fenton National Clubs. Clubs not in attendance were: Heisey, Imperial, Fostoria, Tiffin and Duncan.

The meeting was called to order by Bill Ehrsam. Janice Hughes reported that 125 applications for membership were received by utilization of the N.G.C. ad in the DAZE. The breakdown was as follows: Fenton 19; Heisey 15; N.D.G.A. 30; Fostoria 27; Cambridge 5; Duncan 7; Tiffin 11; Imperial 11. It was the general consensus that the National Glass Clubs ad in the DAZE was beneficial and should be continued. The Cambridge club agreed to continue to be the clearinghouse for N.G.C. membership requests for another year.

Mailing procedures were discussed. Clubs present all mail their newsletters first class postage and felt it necessary to continue doing so. A question was raised as to the procedure used when receiving inquiries on glass evaluation. All Clubs present felt it unwise to give out estimates.

The merits of mail-in balloting were discussed. Cambridge and N.D.G.A. have mail-in balloting. Fenton is proposing this voting system at their annual meeting in August. All felt it was the most democratic way of voting.

The next meeting, to be hosted by National Imperial Glass Collectors, will be held October 15, 1988.



*On his Fiftieth Year with The Cambridge Glass Co.,
the sales staff affectionately salute*

W. C. (BILL) McCARTNEY

*one of the grandest men we have ever known and
been associated with.*

Cambridge honors McCartney

William McCartney, secretary and sales manager of the Cambridge Glass Co., was honored for his 50 years of service with the firm at the annual sales meeting held last month in Cambridge, O.

The entire Cambridge sales force was on hand to congratulate Mr. McCartney and present him with a huge hollow-stemmed champagne glass in honor of his golden anniversary with Cambridge. Inscribed in gold were these words: 1903-1953 Presented to Bill McCartney by his men to commemorate 50 years with Cambridge Glass.



GENE



HARRY



ANDY



PIC



WALTER



TOM



GUS



PAUL



BROWN



MAC



HANK



JOHNNY



GRAB



JAY



GENE II



MAURIE



ARNIE

1903

1953

A TOAST TO
BILL McCARTNEY
FROM HIS MEN

ON HIS
50th ANNIVERSARY WITH THE CAMBRIDGE GLASS CO. 1903-1953

Taste of Honey

CLARKE & CAROLE WEST
3433 Turner Drive
Springfield, OH 45504
513/390-3617

-
- #3400/38 12 oz. forest green
tumblers (4) ea.....\$ 5
- Martha Washington or Heirloom
12" crystal vase.....\$ 24
- #1114 6" crystal Bashful
Charlotte flower holder.....\$ 50
- #167 Composition (#138 Round)
amber cream & sugar, set....\$ 12
- Nude Stem Brandy, forest green.\$ 75
- #397 5-part amber relish.....\$ 10

VISA - M-C - DISCOVER Accepted
UPS Extra

NATIONAL CAMBRIDGE COLLECTORS

FLEA MARKET

SATURDAY - JUNE 25, 1988

6 am - 12 noon

BUCKEYE TRAIL HIGH SCHOOL

(in the heart of downtown Old
Washington)

For contract or additional infor-
mation write to: Flea Market Chair-
man, Marybelle Moorehead, P.O. Box
416, Cambridge, OH 43725.

— Classified —

FOR SALE: #3122 Diane etched: 7-1/4" Gob-
lets (11) \$25 ea.; 5" Juices (12) \$20 ea.;
Sherbets (8) \$20 ea.; 6-1/4" Underplates (5)
\$12 ea. **Barbara Jennings**, 134 Garden
Parkway, Henrietta, NY 14467. 716/334-5066.

BUYING: Moonlight Caprice or Rosepoint by
Cambridge; Rose or Orchid by Heisey; & June,
American, Fairfax, Versailles, Trojan, etc., by
Fostoria. **Nadine Pankow**, 207 South Oakwood,
Willow Springs, IL 60480. 312/839-5231.

WANTED: Cambridge #3400 blank, light green
6", 8-1/2", and 9-1/2" plates; soup or cereal
bowls; cups and saucers. **Barbara Cohen**,
10550 SW 71st Ave., Miami, FL 33156. Phone:
305/666-9472.

FOR SALE: #3300 Series: willow blue (8) ftd.
water tumblers \$12; same green signed; (2)
bowls 5" deep \$10; 7" plates 6 for \$45. #3126
amethyst (5) 9 oz. goblets \$12. #3400/92
ebony (3) 2-1/2 oz. shots in Farber holders \$7.
Caprice crystal (3) #3 cocktails \$15; same
LaRosa; #26 11-1/2" plate \$45. Gloria peach-
blo #3900/120 5-part 12" celery and relish
\$42. Leaf Line #1211 willow blue candelabrum
\$40. Regency (6) low sherbets \$8. Priced each
and as stated. UPS Extra. **Robert Taylor**, 80
Middle Street, Apt. 21, Gloucester, MA 01930.
Phone: 617/281-4637.

The Cullet Bin.....

With the advent of Spring and Summer, we
find that we are in need of several items in
the yard tool line, for the Museum.

If any of our members would happen to have
any used, slightly worn (but not worn-out), or
new yard tools, such as: rakes, lawn brooms,
shovels, hand spades, clippers, trimmers,
brooms, wheelbarrow, or anything else along
these lines a donation of same would be
greatly appreciated.

If possible, please bring any items you would
care to donate when you come to Convention!

The DAZE

★ SPECIAL OFFER
to NCC friends
\$2. off the 1 year
subscription price.
when on this form
or copy of.

The Original, National monthly newspaper dedicated to the buying, selling & collecting of colored glassware and china including Depression Glass and the Elegant Glass (Cambridge Heisey, Fostoria etc.) We educate and inform you each month with feature articles by top notch columnists, readers "finds", club happenings, show news and a multitude of ads. Find those missing pieces to your 30s, 40s or 50s pattern. Can't identify it? Perhaps we can help. "Keep up with what's happening with a subscription to the DAZE. Buy, sell or trade from the convenience of your easy chair.

Name _____ Street _____

City _____ State _____ Zip _____

1 yr. \$15.00 2 yrs. \$29.00 \$1.75 single current copy
Check enclosed MasterCard Visa

Exp. date _____ Card No. _____

Signature _____

Orders to D.G.D., Box 57NC, Otisville, MI 48463

Please allow 30 days for your first issue— Canadian subscribers, add \$1. per year and subscribe by charge card only! This Special Offer May Not Be Combined With Other Special Offers

Glass Collector's Digest



... the quality
color magazine
devoted to all types
of collectible glass.

SAVE 30% off the cover price
1 yr. — \$16 2 yrs. — \$29 3 yrs. — \$42

6 issues yearly— Satisfaction Guaranteed

Send check to: GCD, Dept. CB,
P.O. Box 553, Marietta, Ohio 45750.

Or use charge card by calling
1-800-533-3433 or 1-614-373-9959

WELCOME TO CLASS COUNTRY!

I-70

STOP AND SEE US

ROUTE 40

WE FEATURE GLASSWARE OF
CAMBRIDGE, HEISEY, FENTON & FOSTORIA
Plus a full line of Art Pottery and a General line of Quality Antiques

*Stage Coach
Antique Mall*

RT. 40, ONE-HALF MILE WEST OF I-70 NORWICH EXIT #154
MANY DEALERS-WIDE SELECTION-PLENTY PARKING

DORIS AND ROY ISAACS
BUY AND SELL
814-872-3720



7525 EAST PIKE
NORWICH, OHIO 43787

MON THRU SAT 10-5:30 SUN 12-5:30
SUMMER EVENING HOURS BY CHANCE

MANY DEALERS — PLENTY OF PARKING

SPRINGFIELD Antique Show & Flea Market

Clark County Fairgrounds

SPRINGFIELD, OH

Exit 59 on I-70

400-800 DEALERS

INSIDE AND OUTSIDE

Ohio's largest year round show with an
emphasis on quality antiques

9:00 AM - 5:00 PM

Admission \$1.00

Children under 12 FREE

NEXT SHOW

JUNE 18 & 19, 1988

1988 SHOW DATES

AUG.		20-21
SEP.	Extravaganza	16-17-18
OCT.		22-23
NOV.		19-20
DEC.		10-11

BRUCE KNIGHT, MGR.

For Information Write
P.O. Box 2429, Springfield, OH 45501
Phone (513) 325-0053

SKYLINE DRIVE ANTIQUES

ANNOUNCES an OPEN HOUSE

The sale location is our home at: 5432 Skyline Drive, Cambridge, Ohio.
The hours are as follows.

Thursday - JUNE 23rd --- 1 pm - 6 pm
Friday - JUNE 24th --- 9 am - 4 pm
Saturday - JUNE 25th --- 9 am - 6 pm
Sunday - JUNE 26th --- 9 am - 6 pm

There will be no prior showing, nor prior sales to the public, before 1 pm Thursday!

Due to several factors, we have been unable to do shows during 1988, including the upcoming National Cambridge Collector's Show.

We therefore will offer For Sale all of our current show stock at cost. We will also include approximately 250 pieces from our personal collection, which will include, but is not limited to: Caprice; Crown Tuscan; Smoker's Items; Cream and Sugars; Salt and Peppers, several limited production or sample items. We will also sell by the piece 21 stems with a special cutting, ordered by A. J. Bennett for a prominent Cambridge family for a Christmas present.

All sales are final. Terms may be arranged for large purchases.

Drew & Donna Davis
5432 Skyline Drive, Cambridge, OH 43725
614 / 432-2621

COLUMBUS ANTIQUE FLEA MARKET (ANTIQUES & COLLECTIBLES)

Ohio State Fairgrounds - Lausche Building
Off I-71 Exit 17th Avenue - Columbus, Ohio

JUNE 26TH

Sunday Only - 7 A.M. to 4 P.M.
Show Admission \$1.50 - Under 12 Free
150 QUALITY DEALERS

SELLING Advertising Art Deco, books, Cambridge, clocks, coins, collectibles, Depression glass, dolls, Fiesta, fine early furniture, Heisey, jewelry, lamps, oak furniture, post cards, pottery, good primitives, tools and print shop items



4214 North High Street, Columbus, Ohio 43214
(614) 267-8163 (614) 263-6830 (614) 885-2352

NEXT SHOW: September 11, 1988

1988 EIGHTH ANNUAL

Fostoria Glass Society

Convention
Show & Sale
of Fostoria & other fine Glassware
Delf Norona Museum
Eighth Street & Jefferson Avenue
Moundsville, West Virginia

FRIDAY, JUNE 3 -- 6:00-9:00 P.M.
Premiere Admission \$3.00
SATURDAY, JUNE 4 -- 11:00-5:00
Annual Meeting - 9:00 A.M.
AUCTION - 6:00 P.M.
SUNDAY, JUNE 5 -- 11:00-4:00
General Admission
Sat.-and-or Sun.- \$1.50

Lectures Door Prizes Films

For information call: (304) 845-0362
or (304) 845-6388
Write: P.O. Box 826, Moundsville, WV 26041

FLEA MARKET
SUNDAY, JUNE 5 -- 10:00-4:00
Delf Norona Museum
(near Courtyard)
FREE ADMISSION
Early entry fee -- \$15.00 each

EX



12th ANNUAL NATIONAL IMPERIAL GLASS COLLECTORS' SOCIETY CONVENTION

McLure Hotel • Wheeling, WV

SHOW & SALE

Saturday, June 11 1:00 p.m. to 5:00 p.m.
Sunday, June 12 11:00 a.m. to 4:00 p.m.
Donation

SEMINAR

Cathay by Richard Lancione
Saturday, June 11 9:00 a.m. to 10:00 a.m.
OPEN TO PUBLIC • FREE ADMISSION

BANQUET

Saturday, June 11 7:00 p.m.
OPEN TO PUBLIC • BY RESERVATION

FOR INFORMATION, WRITE:
National Imperial Glass Collectors' Society
P.O. Box 534 • Bellaire, OH 43906
or Phone (614) 676-2422 • (614) 676-9827

EX



The National Duncan Glass Society

Thirteenth Annual Duncan Convention and Show
FEATURING DUNCAN, HEISEY, CAMBRIDGE,
FOSTORIA AND OTHER ELEGANT GLASS.

July 23 11:00 A.M. to 5:00 P.M. July 24 11:00 A.M. to 5:00 P.M.

HOLIDAY INN MEADOWLANDS

WASHINGTON, PENNSYLVANIA
1 79 N. of Washington, PA Racetrack Rd. Exit

Guest Author & Lecturer William Heacock

ADMISSION: \$2.50

For Information Call: 222-7637



EX

1988

18th Annual Antique Show & Sale Heisey Glass Display

17th ANNUAL CONVENTION
OSU - COTC Newark Campus
Country Club Drive, Newark, Ohio

Friday, June 17 12:00 p.m. to 5:00 p.m.
Saturday, June 18 11:00 a.m. to 7:00 p.m.
Sunday, June 19 12:00 p.m. to 5:00 p.m.

(DISPLAY CLOSES AT 4:00 P.M. ON SUNDAY)



Donation \$2.50
Plenty of Free Parking

GALA PREVIEW
Thursday, June 16, 1988

Pork and Beef Barbecue 5:00 p.m. to 7:00 p.m.
Show 6:00 to 10:00 p.m. Display 8:00 p.m. to 10:00

Donation \$8.00
Includes Meal

★ ★ ★ ★ ★ ★
FLEA MARKET ON THE SQUARE
Two Weekends

Saturday, June 11 Sunday, June 12
Saturday, June 18 Sunday, June 19
Dawn to ?

FOR INFORMATION CALL 614-345-2932

Sponsored by
Heisey Collectors of America, Inc.
Benefit National Heisey Glass Museum

EX

Mama Manning's Cherished Relics

3118 Terry Rd., Jackson, MS 39212

JENELL P. MANNING VELMA PICKLE
Bus. (601)372-1713 (601)353-5316
Res. (601)372-0456

DEALERS



DIRECTORY

NOTE: When writing to the Dealers listed here, please enclose a SASE!

MILBRA'S CRYSTAL MATCHING

P.O. Box 363, Rio Vista, TX 76093
Milbra Long 817 / 645-6066
FOSTORIA * CAMBRIDGE * HEISEY * DEPRESSION
ERA GLASSWARE
BUY and SELL

BENICIA ANTIQUE SHOP

305 First Street
Benicia, California 94510

OPEN 11 AM - 5 PM
Closed Monday

Z. E. LOPES 707-745-0978

VISIT HISTORIC BENICIA
and its 28 shops

Off Interstate #80
..... North of San Francisco

THE MUTED SWAN ANTIQUES

5486 Peachtree Rd. Chamblee, GA 30341
Heart of Chamblee Antique Row
Specializing in Cambridge, Heisey and Fostoria
Bill & Pat Miller 404-451-7620

SPECIALIZE IN CAMBRIDGE GLASS & ANTIQUES

DOYLE L. BYINGTON

553 Sanchez Street, San Francisco, CA 94114
415/621-1854

Shows: Mail-Order - Buy & Sell - By Appointment

ANDREJCAK'S ANTIQUES

14533 Bayes Ave
Lakewood, Ohio 44107

Joe & Karen Andrejcek 216-226-3417
SHOWS ONLY - CAMBRIDGE - FENTON - CHINA

BOGART'S ANTIQUES

Stagecoach Mall, Building #2
Norwich, OH 43767

Jack and Sharon Bogart

614/826-7439 and 614/872-3514

BUY - SELL - APPRAISE - REFINISH
SEAT WEAVING - CLOCK REPAIR
COPPER & BRASS POLISHING

GENERAL LINE CAMBRIDGE GLASS

ANTIQUES ON THE MALL

SPECIALIZING IN CAMBRIDGE GLASS

Stagecoach Mall - Bldg. 3 - Norwich, OH

Virginia Bennett 614/432-4483
64183 Warne Drive, Cambridge, OH 43725

D & D ANTIQUES

Columbus, Ohio

DICK SLIFKO SHOWS ONLY

BERKELEY ANTIQUES

69 Berkeley St., Boston, MA 02116

OPEN: Monday thru Saturday 11 AM to 5 PM

GEORGE & FRANK 617/426-1048

DUNCAN, CAMBRIDGE, HEISEY, GENERAL LINE

Elegant American Glassware of the Early 1900s

ABBA Antiques

Bill & Barbara Adt (404) 279-1942
P.O. Box 2485 Lilburn, Georgia 30226

THE GLASS CUPBOARD

39 Shire Oaks Drive
Pittsford, New York 14534

Marcia Ellis Cambridge, Duncan Miller
(716) 586-7596 Shows, Mail Order, Appt.

JUDY'S ANTIQUES

Judy Bennett

422 S. Ninth Street (Corner of Jefferson),
Cambridge, Ohio 43725

BUYING Ph. 614-432-5855 SELLING
Cambridge Glass my Specialty

"Happiness Is" - The Stultzs

3106 Warren Court, Glen Allen, VA 23060

Shows and Mail (Richmond Area) 804-262-1273
GLASS CIRCA 1890-1960

PEG AND DALE GOTSCHALL

Antiques, Cambridge and Other Quality Glass

833 N. 6th St., Cambridge, Ohio 43725

Phone 614/432-5529

Stagecoach Mall - Bldg 2 - Norwich Ohio

GREEN ACRES FARM

2678 Hazelton Etna Rd., Pataskala, OH 43062
(State Route 310 North)

Sat. & Sun. 1-7 PM 614/927-1882

Antiques, Crystal Glass and Collectibles

MOSTLY HEISEY

16 Clayton Place, Albany, NY 12209

Rhoda Curley 518 / 482 6272

SHOP and MAIL ORDER

THE HITCHING POST

7467 S. R. 88
Ravenna, OH 44266

Ph. 216-296-3686 D. McDaniel

CAMBRIDGE - HEISEY - GENERAL LINE

BUY-SELL 513/390-3617

Taste of Honey

Glassware - Collectibles

CLARKE & CAROLE WEST 3433 Turner Dr
Springfield, OH 45504

1886 HOUSE

East Schodack, N.Y. 12063

MAIL and SHOWS

Laurie Cruise 518-477-5895

CAMBRIDGE - NORITAKE - AZALEA - D.G.

L & M ANTIQUES

1331 S.E. 4th Ave., Pompano Beach, FL 33060

Lydia & Cliff McNeil 305/943-2274

CAMBRIDGE & FOSTORIA OUR SPECIALTY

Buy & Sell Shows Only

REMEMBRANCES

7597 Daphne Dr., No Syracuse, NY 13212

Shirley S. Ladouceur 315 / 458-5297

ANTIQUES and COLLECTIBLES

MAIL ORDER SHOWS APPOINTMENTS

MARGARET LANE ANTIQUES

2 E. Main St., New Concord, OH 43762

Lynn Welker 614 826-4418

CAMBRIDGE GLASS MATCHING SERVICE

Hours Mon - Fri 1-5 PM or by Appointment

THE GLASS URN

456 West Main Street, Suite G.

Mesa, AZ 85201 602 / 833-2702

Mail Order Shows Open Shop

CAMBRIDGE, FOSTORIA, HEISEY, ETC.

AL STEELE

Westerville, Ohio

614-882-6483 or 614-882-7124

Mail Orders and Shows Only

HEISEY - CAMBRIDGE - PATTERN GLASS

BUD'S TRADING POST

GENERAL STORE - FLEA MARKET

501 Wheeling Ave., Cambridge, OH 43725

10-5 Mon. thru Sat. 614-432-4688

CAMBRIDGE - PATTERN - ART GLASS

This Bud's for Y'all

13th Annual

NATIONAL
CAMBRIDGE
COLLECTORS

ANTIQUÉ SHOW & SALE

(& 15th Annual NCC Convention)

SHENANDOAH INN

INTERSTATE 70...EXIT 186...7 MILES EAST OF
CAMBRIDGE, OHIO

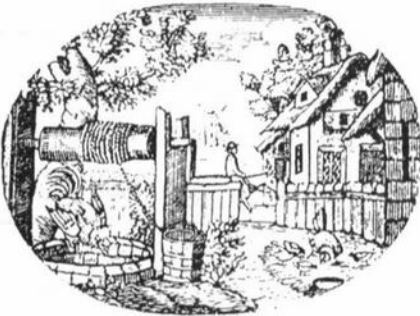
JUNE 24, 25, 26, 1988

HOURS	
FRIDAY, JUNE 24th	5:00-8:00
(PREVIEW ADMISSION \$3.50)	
SATURDAY, JUNE 25th	11:00-5:30
SUNDAY, JUNE 26th	12:00-5:00
(ADMISSION \$2.00)	

OFFERING CAMBRIDGE AND OTHER FINE GLASSWARE

FOOD DOOR PRIZES PARKING

June
1988



QUARTERLY MEETING

AUGUST 6, 1988 - 12 noon
Complete information for this potluck picnic will be in the July CRYSTAL BALL.

**VISIT YOUR MUSEUM
of
CAMBRIDGE GLASS**

Museum Telephone Number - 614-432-4245

National Cambridge Collectors, Inc.
P. O. Box 416 Cambridge, Ohio 43725

FIRST CLASS MAIL

FIRST-CLASS MAIL
U.S. POSTAGE
PAID
So. Vienna, Ohio
45369
Permit No. 15

Membership Renewal Notice

This is your last issue of the *Crystal Ball*—if the date on your address label reads 6-88.
Please renew now!