

---



# Cambridge Crystal Ball

---

Published monthly by the National Cambridge Collectors, Inc  
to encourage and report the discovery of the elegant and boundless product  
of the Cambridge Glass Company of Cambridge, Ohio

---

Issue No. 177

January 1988

---

## THOUGHTS FROM YOUR PRESIDENT . . . . .

### "HAPPY NEW YEAR!"

Yes, 1988 is here already and I haven't even finished half of the things I had planned for 1987! It seems the more I think I am getting done, the behinder I get.

Hope you all had a wonderful Christmas and received everything from Santa that you had wished for. It seems terrible that such a happy occasion should be followed by the sad thought that we have to start figuring out how we can either beat the tax system -- or scrape up enough cash to keep the collectors away from our door.

Yes, it is that time of year again. I have an idea that might just work for us glass collectors. Why don't we all get together, go to Washington and lobby to have a bill passed that would allow us to deduct all of our glass purchases. Why not? That sort of thing happened in the last tax bill and the reasons weren't even that noble. Boy, wouldn't the government owe us a bunch of money each year? We could also pay those outrageous prices that are being asked for some of the glass now, with the knowledge that we could deduct the full amount. It would help everyone out and give the economy a good boost!

I will never be able to figure out how prices are set on glass. I know that certain items, because of their beauty, their history, their rarity, and their quality, demand higher prices than common pieces. I also know that the

same pieces of glass in different areas of the country demand different prices. But, would someone explain to me how the same pieces of glass in the same Flea Market can vary as much as 200% in price. I find this amazing and I also find that in most of these cases those same pieces of glass are on the same peoples table week after week after week. You walk around looking at the glass and you don't even have to look up at the person behind the table to know who it belongs to!

Don't get me wrong. I'm not picking on Flea Markets, or the people who try to make a few dollars. They work hard at it and they provide us with some of our greatest finds. I'm just saying that I can't understand how three pieces of glass made by the same company out of one mould, all made in one year, and all in the same color . . . crystal, can be priced on three different tables at \$90, \$110, and \$225 -- all at the same Flea Market? I bought the last one of mine, recently from a reputable Antique Shop for \$75.

Anyway, the **Annual All-Cambridge Glass Auction** is not too far away. Your Auction List is included in this issue. Make plans to attend both the Auction and the **Quarterly Meeting on Friday, February 26th - 8 P.M.**

We mentioned holding a raffle sometime after the first of the year and you can look forward to receiving your tickets via your next issue of the CRYSTAL BALL. Included also will be all the pertinent information.

See you at the Auction. Come and have fun!  
**FEBRUARY 27, 1988 - 10:30 A.M.**

# Cambridge Crystal Ball

Official publication of National Cambridge Collectors, Inc., a non-profit corporation with tax exempt status. Published once a month for the benefit of its members.

Membership is available for individual members at \$13 per year and additional members (12 years of age and residing in household) at \$3 each. All members have voting rights, but only one *Crystal Ball* will be mailed per household.

Back issues of the *Crystal Ball* are available (beginning with Issue No. 1, May 1973) for members only. Cost: 60 cents each or 12 issues for \$7.

## 1987-88 Officers & Committee Chairpersons

President	Willard P. Kolb
Vice-President	Mark A. Nye
Secretary	Janice Y. Hughes
Treasurer	William C. Smith
Sergeant-at-Arms	Marybelle Moorehead
Budget & Finance	David B. Rankin
By-Laws	J.D. Hanes
Convention	Mark A. Nye
Membership	Phyllis D. Smith
Museum	Billy F. Harbaugh
Program & Entertainment	Marlene K. Snyder
Project	Willard P. Kolb
Public Relations	William C. & Phyllis D. Smith
Publicity	Joseph Andrejcek
Study Group Advisor	Phyllis D. Smith
1988 Auction	Lynn M. Welker
1988 Antique Show	Joy R. McFadden
1988 Flea Market	Marybelle Moorehead
Crystal Ball Editor	Phyllis D. Smith

## Classified Advertising Rates

5 cents per word \$1.00 minimum

We cannot mix type size in classified advertisements. Abbreviations and initials will count as words. Payment in full must accompany all ads.

## Display Advertising Rates

(Camera-ready ads preferred)	Members	Non-Members
1/8 page (9 items)	\$ 4.00	\$ 6.00
1/4 page (20 items)	7.00	10.00
1/2 page (20 items)	12.00	18.00
3/4 page	17.00	25.00
Full page (50 items)	22.00	33.00

## Dealers Directory

Five-line maximum \$12.00 for 12 months

Cambridge *Crystal Ball* assumes no responsibility for items advertised and will not be responsible for errors in price, description or other information.

*Advertising copy, articles, club news and notices must be in our hands by the 10th of each month to assure publication in our next issue.*

Paid advertisements containing reproductions or new glass will not knowingly be accepted for publication.

Opinions or information stated in any signed article or letter printed in the *Crystal Ball* are those of the authors and may or may not agree with National Cambridge Collectors, Inc. The Editor reserves the right to refuse and to edit any material submitted for publication so as to conform with the editorial style of the *Crystal Ball*.

## Please Address All Correspondence to:

National Cambridge Collectors, Inc.  
 P.O. Box 416 Cambridge, Ohio 43725  
**President** — Willard Kolb, 614/695-0695  
**Secretary** — Janice Hughes, 614/432-7823  
**Editor** — Phyllis Smith, 513/323-3888

NCC Museum of Cambridge Glass is located on U.S. Route 40, one-eighth mile east of I-77 near Cambridge. Hours: 12 noon to 4 p.m., Wednesday through Sunday (March through October). Closed Easter and July 4th.

Please notify us immediately of any change in your address.

Please enclose an SASE when requesting information.

# CAMBRIDGE GLASS BOOKS FOR SALE

by National Cambridge Collectors, Inc.

\* **COLORS IN CAMBRIDGE GLASS**  
 (128 pages - 60 color plates - fully indexed)  
 Hardbound with Price Guide \$19.95

\* **1930-34 CAMBRIDGE GLASS CO. CATALOG REPRINT**  
 (250 page reprint of original catalog)  
 Hardbound with Price Guide \$14.95

\* **1949-53 CAMBRIDGE GLASS CO. CATALOG REPRINT**  
 (300 page reprint of original catalog)  
 Hardbound with Price Guide \$14.95

\* **1956-58 CAMBRIDGE GLASS CO. CATALOG REPRINT**  
 (164 page reprint of original catalog)  
 Paperback \$6.95

**1985 COMBINED PRICE GUIDE**  
 for 1930-34 & 1949-53 catalog reprints Postpaid \$5.75

\*NCC MEMBERS ONLY: These publications are available at 10% discount - or all four (4) at one time for \$50.00.

by Bill & Phyllis Smith

**CAMBRIDGE GLASS 1927-1929**  
 (66 page reprint of original catalog)  
 Paperback with Identification Guide \$7.95

by Mark Nye

**CAMBRIDGE STEMWARE**  
 (95 Stemware lines with 107 illustrations)  
 Paperback \$14.95

by Cambridge Buffs Study Group

**NEARCUT**  
 (108 page reprint of 1910 Cambridge Catalog)  
 Paperback with Price Guide \$9.95

by Mary, Lyle and Lynn Welker

**CAMBRIDGE GLASS CO.**  
 (120 pages of reprint from 8 old catalogs)  
 Paperback \$6.95

**CAMBRIDGE GLASS CO. BOOK II**  
 (119 pages of reprint from old catalogs)  
 Paperback \$6.95

**CAMBRIDGE, OHIO GLASS IN COLOR II**  
 Spiralbound \$5.95

by Harold and Judy Bennett

**1903 CAMBRIDGE GLASS CO. CATALOG REPRINT**  
 (106 page reprint of an original catalog)  
 Paperback \$7.50

Address your orders to:

**BOOKS**  
 National Cambridge Collectors, Inc.  
 P.O. Box 416  
 Cambridge, OH 43725

Please add \$1.00 (P & I) per order.  
 (Not required for Price Guide)

Ohio residents please add 6% state sales tax.

**DEALER DISCOUNTS AVAILABLE - PLEASE WRITE!**



# The Cambridge Glass Company

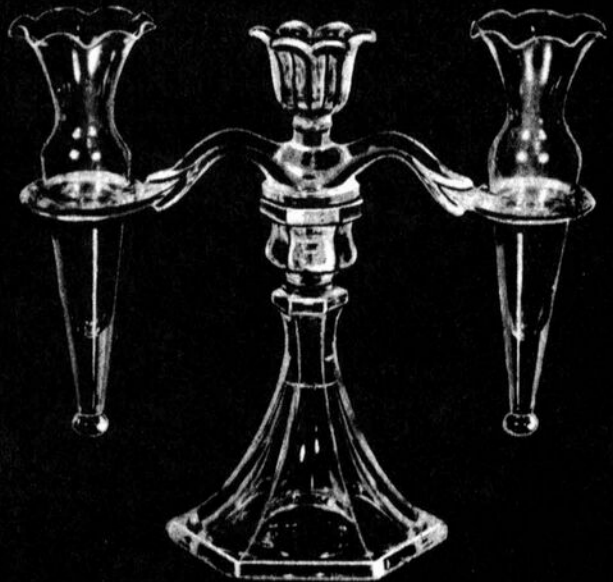


1574—Large Cornucopia  
Centerpiece  
Length 13½ in. — Height 7½ in.  
Patent No. 129,657

1554—Small Cornucopia  
Centerpiece  
Length 11½ in. — Height 6 in.  
Patent No. 129,657



1617—9 in. Hurricane Lamp



671—Epergne  
Height 9½ in.

Cambridge, Ohio - - - U. S. A.





# VASES

## PART II

by MARK A. NYE

(Editor's Note: It will be of benefit to our readers to have both the September and December 1987 issues of the CRYSTAL BALL handy when reading this article; in order to follow along with the references made to information contained in those two issues.)

Continuing from where we left off last month in our discussion of the vases shown in the September 1987 issue of the CRYSTAL BALL, the first items to be discussed are those shown on the fifth page of the brochure. While not shown with a #3400 Line designation, two of the vases on this page, #1335 and #1242, do carry the #3400 Line design. As such, they would have been brought out sometime in the early 1930s; even though, like most of the other vases on this page, the basic shape dates to some years earlier. The #1242 vase was a popular one and will be found in many, if not all, of the colors of the 1930s, including: ebony, plain, etched and engraved. The #1335 vase is shown on a 1931 catalog page in ebony, etched Lorna and silver encrusted, and on a 1932 catalog page etched #758.

The #1228 vase first appeared on a Cambridge catalog page in 1931 etched Gloria, but this is no assurance it was new at that time. In this same catalog supplement it was shown in ebony with D/970-S or etched Apple Blossom silver encrusted. Later in 1932 it was offered etched #629 and when crown tuscan was introduced, in this color with a gold encrusted Portia etching or D/1001. The #1228 was also made in many of the other 1930s colors: crystal, amber, emerald, dianthus pink, forest green, royal blue and carmen. This vase does not appear to have been carried over into the 1940s.

The #1417, #1430, and #779 vases have their origins in the years preceding 1930. The #779 is illustrated on a 1931 catalog page in ebony with D/971-S, otherwise known as silver encrusted Gloria, and is one of the larger Cambridge vases, measuring 14" in height. The #1418 and #1430 vases are shown in crown tuscan in the 1934 Cambridge catalog supplement.

The remaining vase on this page is the #1336 or floor vase and it was covered in the previous article.

The #1446, #1447 and #1448 vases shown on the following page are an Aero Optic version of the #3400 Line. These first appear on a 1934 catalog page and remained in the Cambridge line until sometime during the 1940s. Because of their optic design, these vases will not be found decorated, but will be found as indicated on the catalog pages, in color.

The roots of #402, #783 and #782, like those of so many Cambridge vases, can be traced to the 1920s. Popular vases, these are relatively easy to find in color, plain and etched; since they were made in many, if not most or all, of the 1930s colors. Of the three, only #402 made it into the 1940s. Based on its design feature, #402 technically is a part of the #3400 line.

Two of the three remaining vases on this page are from the #3400 Line and are frequently seen today, plain and etched, crystal and color. While strongly resembling the other two in shape, #1309 is not from the #3400 Line since it does not have the characteristic design features. It too was a popular vase and is easily acquired by today's collectors.

The Gadroon Line was brought out in 1933 and the #3500/44 and #3500/45 vases were shown on a catalog page issued that year. The #3500/122 vase does not appear on the 1933 catalog pages covering the Gadroon Line and is infrequently found today. The other two Gadroon vases shown on page 7 are easier to acquire, although none of the three were shown in the 1940 Cambridge catalog.

Dating to a year earlier, the Tally-Ho Line was first shown on Cambridge catalog pages issued in 1932. The #1402/79 vase appears to be made from the same mold as the #1402/48 footed cocktail shaker, the only difference being the finish on the top. Infrequently seen, the vase was manufactured in all of the Tally-Ho colors, several of which were also etched. The vase was not included in the Tally-Ho offered in the 1940 catalog.

The vase designated as #3450 9" footed vase (#1130) was illustrated in the 1930 Cambridge catalog as the #1130 11" vase. Later when

continued on next page

VASES . . . . . continued from last page

the Nautilus Line was introduced, the 9" version appeared as a part of it and is shown in the 1934 Cambridge catalog supplement. The #3450 7" vase is just what it appears to be, a cut off version of the 9" vase. An ebony #1130 vase etched Windsor Castle and silver encrusted (D/972-S) was shown in the 1931 catalog supplement and later the same vase in crown tuscan and decorated with D/1007-8 was manufactured.

The #1431 8" bulb vase was originally promoted as a Narcissus bulb vase. Quoting from the October 1934 issue of China, Glass and Lamps, "The Narcissus Bulb Vase, above, sells readily and profitably because it is attractive. Designed to hold four bulbs, it is useful for other bulbs, such as Hyacinth and Lily-of-the-Valley, as well as Narcissus. Done in the wide selection of masterful CAMBRIDGE colors." The masterful Cambridge colors included: amber, forest green, royal blue, amethyst and carmen.

The #3400/93 Ivy Ball is a part of the #3400 Ball Shaped Line brought out in late 1931 and is notable for its side opening. This ivy ball was featured in an advertisement published in the February 1932 issue of China, Glass and Lamps, and part of the caption read: "The Most Interesting Glass Novelty of the Season." Not too often seen today, the #3400/93 Ivy Ball was made in crystal, amber, forest green, plain or etched; and in royal blue, amethyst and carmen, plain.

The remaining vase on this page, the #1236 footed Ivy Ball, needs little introduction or comment; as it is frequently seen today and is well known to most Cambridge collectors.

Five of the eight vases shown on the first two rows of the last page of the brochure or catalog supplement, as well as one from the third row, are vases whose basic shapes appear in many Cambridge lines in addition to being sold as shown here. These are the #306, #561, #6004 (both sizes), #308 and #309. A notable example of these shapes being used elsewhere is the Caprice pattern where the #306, #561, and #309 shapes were incorporated into the line.

Why Cambridge elected to picture the #3450 sugar as a vase is a question that probably will never be answered. However, what is shown with the caption "3450 3" 2-hdl," is just

that, the #3450 sugar bowl!

Next to it is another member of the #3400 Line and it needs no further comment. At the end of the second row is shown the #2707 7" miniature vase and this is a shape seen in Cambridge catalogs as early as 1920 and certainly is not unique to Cambridge.

The #1330 Sweet Potato Vase was featured in a full page advertisement published in the October 1932 issue of China, Glass and Lamps. The use of sweet potato vines for decorative foliage (in the manner of ivy) was popular during the 1930s and the advertisement for this vase included instructions on how to proceed with the growing of such vines. The following month, the following appeared, again in China, Glass and Lamps: "The indoor days have arrived and many housewives seek green foliage. To meet this need, either as an addition to or as a substitute for ivy, the Cambridge Glass Company . . . suggests the sweet potato vine and has brought out an interesting vase which it calls the Sweet Potato Vase. The new vase is so shaped as to hold the sweet potato in just the proper way and with the vase there is obtainable a wrought iron holder. Rich, green foliage comes from the potato in three weeks. An actual example of a sweet potato vine in one of these vases ought to sell many of them in the retail stores. The vases are made in forest green, ruby, amethyst and ruby glass." Note that ruby appears twice. This is without a doubt an error and one of them should probably have been royal blue as previous ads stated the vase was made in this color.

The floating rose bowls were apparently brought out during the early to mid-1930s and remained in the Cambridge line until sometime in the 1940s. It is hardly likely these vases were intended for use as floating rose bowls when made in the darker colors of royal blue, carmen, amethyst and amber; however, they were made in these colors. The mystery is solved by an advertisement in the October 1934 issue of China, Glass and Lamps: "Quite appealing is the Floating Rose Bowl, for use as a centerpiece or on the occasional table. Beautifully blown, it has a design which increases the beauty of the rose floating on the water as illustrated. The bowls also may be used as vases." Obviously when made in the darker colors, the intended use was as vases.

Future articles will cover vases in production during the 1940s and 1950s.

# 1988 CONVENTION

JUNE 23 - 24 - 25 - 26, 1988

by MARK A. NYE  
1988 N.C.C. Convention Chairman

Just a brief note this month. Serious work on Convention '88 will begin after the Holidays. (This is being written in early December.)

There will be no major restructuring of the Convention weekend. The only significant change will be a change in the hours the Show is open on Friday night, and this was previously reported in the December CRYSTAL BALL.

Friday night, the Show will open at 5 PM instead of 6 PM as in previous years. The Show will close at 8 PM rather than at 9 PM. Following the Show closing there will be a meal served, rather than the snacks provided in previous years. This, however, will necessitate an increase in the price of admission to the Friday Night opening session. More on this in the Spring.

Surprise me! Someone . . . volunteer to prepare and present a program on Saturday morning. The only requirements are that it be related to the theme of this year's convention . . . Cambridge and the 1950s; and it must be 45 to 60 minutes in length.

The success of our annual Convention is dependent upon participation by the membership. Go ahead, make my day and volunteer!

JUNE 1988 - CAMBRIDGE or BUST!

---

## Study Club News

---

STUDY GROUP #7 - EASTERN OHIO  
"THE CAMBRIDGE BUFFS"  
Phone: 614/432-5230

The Cambridge Buffs held their meeting on November 29th in the home of Mr. & Mrs. Thomas Gray, Cambridge, Ohio. There were eight members present.

Our program for the evening consisted of a study on Cambridge water tumblers. There were 56 different tumblers on display in various colors, patterns, etchings, decorations,

etc. We used our Cambridge books in order to identify some of the more unusual pieces.

Our next meeting will be our Christmas party and gift exchange.

submitted by Deanne Gray

---

STUDY GROUP #8 - SOUTHERN MICHIGAN  
"THE MICHIGAN CAPRICES"  
Phone: 313/655-4703

On September 19th, the Michigan Caprices met at the home of Clara Brown. Lynne and Don Wormland from Mt. Clemens, Michigan, were guests.

Each member brought one of their favorite Cambridge pieces and they told of how they obtained it. Lee Coppo's story had to be the best. She had a small Oil or Cordial decanter, with a Diane etching. She had ordered this from a Cambridge dealer along with some other items, I believe. She neglected to rescue the little ball stopper. Several days later when Martin went out to burn more trash, he found it, all blackened, but in tack. It cleaned up beautifully. What luck!

Clara then showed the group some items she had added to her lovely Cambridge glass collection. Coffee and dessert were served and we spent the rest of the evening just visiting.

---

On November 21st, the Michigan Caprices met at the home of Carol and Jack Christensen. With the popularity of the Blue Willow pattern in china over the past few years, in decorating and normal use, Carol chose to tell the Legend of "Blue Willow." Clara Brown had two examples that Cambridge had produced, one in blue and one in green enamel. We covered how the enameling was achieved on the Cambridge Blue Willow etching. Several of our members had not heard this story before. This was a reprint from the China, Glass and Lamps, June 11, 1928 issue, found in the CRYSTAL BALL #39.

What a wealth of information can be found in the back issues of the CRYSTAL BALL. If you don't have them all, you might ask Santa for them next Christmas!

Show & Tell had several interesting items: a

continued on page 12

# MARTHA WASHINGTON



**51**  
10 oz. Goblet  
\$4.75 Doz.



**45**  
7 oz. Tall Sherbet  
\$4.75 Doz.



**59**  
5 oz. Low Sherbet  
\$4.35 Doz.



**61**  
3½ oz. Cocktail, tall  
\$4.10 Doz.



**60**  
4½ oz. Oyster Cocktail  
\$4.10 Doz.



**56**  
12 oz. Ftd. Stein-Crys. Hld.  
\$9.00 Doz.

Also **55** 10 oz. \$8.25 Doz.  
**54** 8 oz. \$7.60 Doz.



**50**  
12 oz. Ftd. Tumbler  
\$5.55 Doz.



**49**  
10 oz. Ftd. Tumbler  
\$4.75 Doz.



**48**  
8 oz. Ftd. Tumbler  
\$4.75 Doz.



**46**  
5 oz. Ftd. Tumbler  
\$4.10 Doz.



**34**  
9 oz. Goblet  
\$4.75 Doz.



**35**  
12 oz. Ftd. Tumbler  
\$5.55 Doz.



**36**  
6 oz. Sherbet  
\$4.35 Doz.



**47**  
7 oz. Fruit Salad  
\$4.35 Doz.

These Prices are for Crystal and Represent High Retail Prices—this Line is also made in Amber, Royal Blue, Forest Green and Ruby as well as the Modern Colors of Gold Krystal and Heatherbloom—See separate Price List



Our Label On Each Piece



# MARTHA WASHINGTON



**2**  
4 in. Candlestick  
\$9.90 Doz.



**75**  
7 in. Relish, 4-comp. 2-Hld.  
\$16.50 Doz.



**10**  
5½ in. Comport  
\$5.50 Doz.



**72**  
4 in. Candlestick  
\$4.15 Doz.



**73**  
5½ in. Relish, 2 comp. 1-Hld.  
\$8.25 Doz.



**69**  
6 in. Comport, cupped  
\$8.25 Doz.



**68**  
6 in. Comport, flared  
\$8.25 Doz.



**15**  
5½ in. Mint Comport  
\$5.80 Doz.



**74**  
7 in. Relish, 4-comp.  
\$11.00 Doz.



**16**  
10 in. Sweet Pea Vase  
\$33.00 Doz.



**3**  
9 in. Candlestick  
\$16.50 Doz.



**18**  
11 in. Ftd. Vase  
\$33.00 Doz.



**1269**  
10 in. Candlestick,  
with Crystal Bobeche and Prisms  
With No. 1 Prisms  
\$47.50 Doz.  
With No. 2 Prisms  
\$60.00 Doz.



**40**  
14½ in. Covered Urn  
\$41.25 Doz.

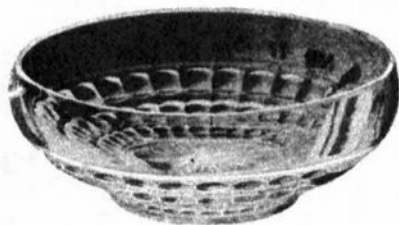
These Prices are for Crystal and Represent High Retail Prices—this Line is also made in Amber, Royal Blue, Forest Green and Ruby as well as the Modern Colors of Gold Krystal and Heatherbloom—See separate Price List



One Label On Each Piece



# MARTHA WASHINGTON



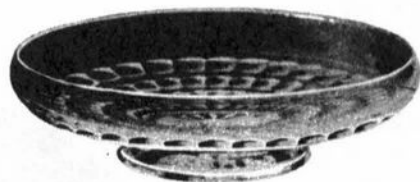
**6**  
10 in. Bowl, cupped  
\$16.50 Doz.



**9**  
10 in. Low Ftd. Compot  
\$29.00 Doz.



**25**  
10½ in. Bowl flared  
\$16.50 Doz.



**28**  
10 in. Bowl, shallow  
\$15.15 Doz.



**13**  
7¾ in. Bowl, tall  
\$15.15 Doz.



**27**  
8½ in. Bowl, deep  
\$15.15 Doz.



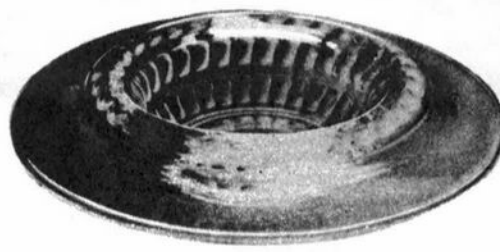
**22**  
7½ in. Coupe Salad  
\$8.70 Doz.



**12**  
10½ in. Bowl, 2-Hld.  
\$15.15 Doz.



**8**  
12½ in. Bowl, flared  
\$18.00 Doz.



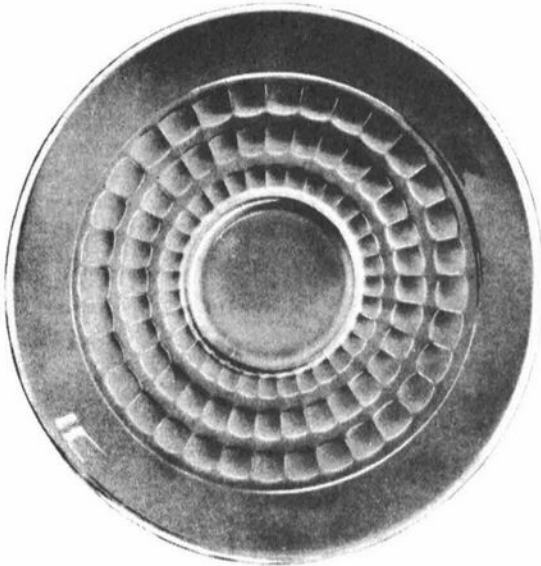
**7**  
12½ in. Bowl, f.r.e.  
\$18.00 Doz.

These Prices are for Crystal and Represent High Retail Prices—this Line is also made in Amber, Royal Blue, Forest Green and Ruby as well as the Modern Colors of Gold Krystal and Heatherbloom—See separate Price List



One Label On Each Piece

# MARTHA WASHINGTON



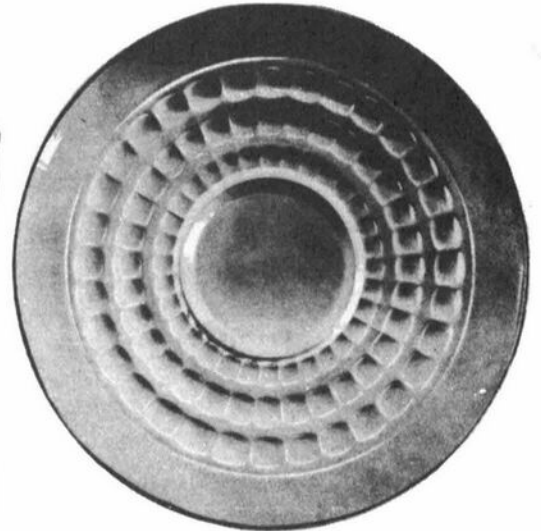
**77**  
13 in. Torte Plate  
\$22.50 Doz.

Also

**78**  
15 in. Torte Plate  
\$30.00 Doz.



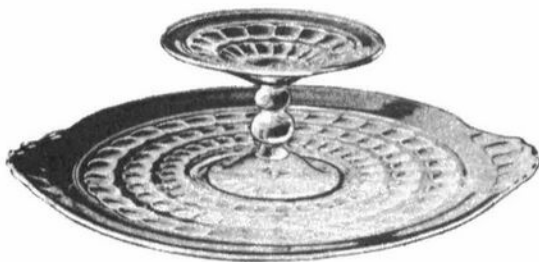
**67**  
Pretzel Jar and Cover  
\$23.10 Doz.



**23**  
12½ in. Plate  
\$16.50 Doz.



**58**  
6½ in. Ice Tub, 2-Hld.  
\$15.15 Doz.



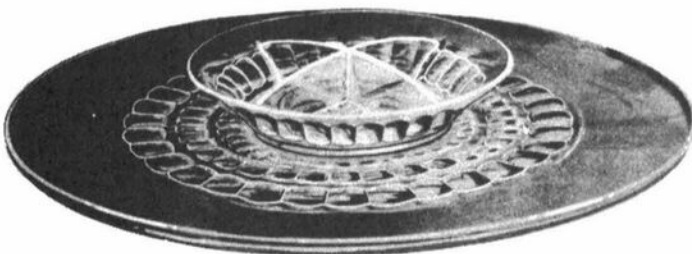
**66**  
11 in. Cheese and Cracker  
\$20.90 Doz.



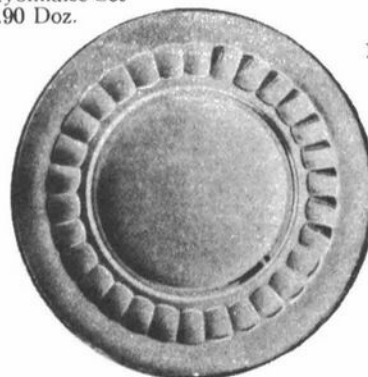
**70/20/445**  
3-pc. Mayonnaise Set  
\$12.90 Doz.



**44**  
11 in. Plate, 2-Hld.  
\$15.15 Doz.



**79**  
15 in. 2-pc. Sunday Evening Supper Sets  
\$41.00 Doz.



**21**  
8¾ in. Salad Plate  
\$8.70 Doz.



**20**  
6¾ in. B. & B. Plate  
\$4.60 Doz.

These Prices are for Crystal and Represent High Retail Prices—this Line is also made in Amber, Royal Blue, Forest Green and Ruby as well as the Modern Colors of Gold Krystal and Heatherbloom—See separate Price List

# MARK NYE

P. O. Box 65-1569; Miami, FL 33265

(305) 221-0343 After 6 P.M.



## APPLEBLOSSOM

6 3400 cup/saucer \$10  
8 3130 8oz ftd tmblr \$11  
3 3130 ctail \$10  
5 3130 low sherbet \$10  
6 3130 10 oz ftd tmblr \$12  
3 3130 2 1/2 oz tmblr \$10  
2 3130 amber goblet \$15  
6 3400 salad plates \$8  
4 3135 yellow champ \$22  
646 Peach-blo candle \$30  
646 amber candles pr \$40  
Amber ice bucket \$50

## CAPRICE

2 Mocha cup/saucer \$17  
2 Mocha salad plate \$10  
5 300 goblets \$10  
7 300 champagnes \$10  
4 300 oys ctail \$12  
7 300 cordials \$18  
2 300 low sherbet \$10  
9 200 5oz ftd tmblr \$5  
10 oz ftd tumbler \$8  
#126 Alpine relish \$55  
#126 relish \$45  
#179 32 oz pitcher \$75

## CASCADE

Cr & sug pr \$16  
9 B&B plates \$4  
5 cup/saucer \$ 7  
8 salad plates \$5  
6 goblets \$9  
4 ice teas \$5  
6 low sherbet \$4  
6 ctails \$4

## Chrys/Betty

Pink ice bucket \$25  
#107 pink jug \$40

## DIANE

9 Regency goblets \$20  
10 Regency champ \$20  
3 Regency ctails \$20  
4 3122 champagnes \$12  
7 3122 ctails \$12  
3122 5 oz. ftd tmblr \$11  
12 3400 salad plates \$7  
8 3400 B&B plates \$7

## ELAINE

3 1066 Goblets \$ 20

## GLORIA

3400/18 yellow shaker \$20

## LARCHMONT

2 3778 goblet \$12  
6 3778 ice teas \$12  
4 3778 champagnes \$12

## LORNA

4 Canape set \$10

## PORTIA

6 3130 goblets \$15  
8 3130 champagnes \$14  
13 3130 ctails \$14  
4 3130 ice teas \$14  
6 3130 5oz ftd tmblr \$12  
3400/18 Yellow shakers \$40  
3pc cvrd marmalade set \$25  
647 2 lite candle \$30  
3400/74 5" toed cmprt \$12  
Gadroon 8" flat plate \$10  
3500/64 3pt celery  
& relish \$25  
3400/200 3 pt relsh \$25  
3400 4 toed mayo \$12

## ROSE POINT

3400/200 relish \$37  
3500/61 3 cmprt  
hdl relish \$35

## VALENCIA

4 3500 goblet \$18

## WILDFLOWER

6 3130 champ \$15  
3400 butter dish \$95

## ETCH 704

8 3060 amber parfait \$10  
6 3060 amber wines \$10

## MARYLAND

6 1958 12 oz ftd tmblr \$6

## MISC

6 Pistachio Gyro Optic  
12oz Tmlrs \$12  
5 Amber 1066 champ \$8  
4 Amber 1066 wines \$7  
2 1402/9 R.B. claret \$15  
Arcadia 64 relish \$12  
3400/100 amber jug \$37  
Gyro Optic Gold Krystol  
ball jug \$37  
Nautilus Ame. jug \$75  
Amber pinch decanter \$20  
#1321 R.B. Decanter \$50  
#782 vase E. Chintz \$35

Unless otherwise noted  
all items are Crystal

All items mint and priced  
each unless noted.  
Shipping extra. SASE

---

## — Classified —

---

**FOR SALE:** #3122 Diane etched: 7 1/4" Goblets (11) \$25 ea.; 5" Juices (12) \$20 ea.; Sherbets (8) \$20 ea.; 6 1/4" Underplates (5) \$12 ea. **Barbara Jennings**, 134 Garden Parkway, Henrietta, NY 14467.

**BUYING:** Moonlight Caprice or Rosepoint by Cambridge; Rose or Orchid by Heisey; & June, American, Fairfax, Versailles, Trojan, etc., by Fostoria. **Nadine Pankow**, 207 South Oakwood, Willow Springs, IL 60480. 312/839-5231.

**WANTED:** Dark Emerald (Forest Green) Martha Washington. Also: Nearcut Marjorie and individual Nut Dishes (any era/color). Please state price, piece(s), and condition. Thanks! **Elaine Storck**, 6731 Maple Dr., Rockford, MN 55373.

**WANTED:** Info/pricing on Cambridge clear or colored Hunt Scene pattern! **R. Tillerson**, 3618 Coltwood Dr., Spring, TX 77388. 713/651-5111

**WANTED TO BUY:** #3600 four (4) Goblets and four (4) Sherbets. Please write: **Lureva S. Mullins**, 27 Vine Street, Gallipolis, OH 45631.

**WANTED:** Minuet pattern. Water Goblets (2); Ice Tea (1); and Sherbet (1). **Mrs. Barbara Billings**, 11730 Harmony Lane, Olathe, KS 66062. 913/897-3554

**FOR SALE:** Happy New Year! Cambridge #3300 emerald green, all signed: tall Sherbets (6) \$10; footed Juice (4) \$10; Cream & covered Sugar \$30. Candlelight: #3400/4 12" Bowl \$45; #3900/35 13 1/2" Cake Plate \$40; #3900/167 14" Plate \$45. Caprice: royal blue 4 1/2" Vase in Farber holder \$65. Caprice: moonlight blue luncheon Plate (2) \$12; 8 1/2" Mayo liner \$12. Priced each and as stated. UPS Extra. **Robert Taylor**, 80 Middle Street, Apt. 21, Gloucester, MA 01930. 617/281-4637



*May the best of this year be the worst of next.*  
—Paul Dickson, *Toasts* (Delacorte)

STUDY CLUB NEWS . . continued from page 6

brilliant Diane etched #1309 5" Globe vase; #273 10" Bud vase in willow blue color and Betty etching gold decoration on top; a milk glass 3 footed 8" oval Shell dish #W108; a crystal Rosepoint pressed foot cordial; and a #1066 Ivy Ball, light amethyst bowl and a heatherbloom stem; and a smoke Modern covered candy. Our December meeting will be held in the home of Robert and Betty Dasen.

submitted by Phyllis Hayes

---

## AN EXPRESSION OF SYMPATHY

It is with deep sadness that we report the recent death of the mother of former Board member Frank Wollenhaupt, Dayton, Ohio.

Loraine Wollenhaupt, Tipp City, Ohio, was a member of N.C.C. for several years and attended many of our activities. She is survived by her husband Edward, son and daughter-in-law Frank and Vicki Wollenhaupt, two daughters, and five grandchildren.

Our Heartfelt Sympathy is extended to the entire Wollenhaupt family.

## SPRINGFIELD Antique Show & Flea Market

Clark County Fairgrounds

## SPRINGFIELD, OH

Exit 59 on I-70

400-800 DEALERS

INSIDE AND OUTSIDE

Ohio's largest year round show with an emphasis on quality antiques

9:00 AM - 5:00 PM

Admission \$1.00 per Weekend

Children under 12 FREE

NEXT SHOW

JANUARY 16 - 17 Inside

### 1988 SHOW DATES

FEB.	20-21
MAR.	19-20
APR.	16-17
MAY	Extravaganza 20-21-22
JUNE	18-19

BRUCE KNIGHT, MGR.

For Information Write  
P.O. Box 2429, Springfield, OH 45501  
Phone (513) 325-0053



**1988 - 1989**

**THE SAN FRANCISCO  
DEPRESSION ERA GLASS, POTTERY  
CHINA SHOW & SALE**

"SHOW AFTER SHOW  
RECORD SALES RECORDED"

WE HAVE BOOTHS AVAILABLE (8' x 16') FOR THE FOLLOWING SHOWS!

Maximum inventory works best!

APRIL 9 - 10	1988	BOOK NOW!
JULY 16 - 17	1988	BOOK NOW!
OCTOBER 29 - 30	1988	BOOK NOW!
<hr/>		
APRIL 8 - 9	1989	BOOK OCTOBER 1988!
JULY 15 - 16	1989	BOOK OCTOBER 1988!
OCTOBER 28 - 29	1989	BOOK OCTOBER 1988!

BOOTH RENTS: \$200 for 8' x 16' Booth

\$75 for Reservations

WRITE or CALL

**JOHN or ROBERT PARR**

**592 Guerrero St., San Francisco, CA 94110-1018**

**(415) 626-4449 or 285-5657 evenings**

**An 'UP TO PARR' Promotion**

BEST SHOWS IN THE WEST!

# COLUMBUS ANTIQUE FLEA MARKET (ANTIQUES & COLLECTIBLES)

Ohio State Fairgrounds - Lausche Building  
Off I-71 Exit 17th Avenue - Columbus, Ohio

## JANUARY 10TH

Sunday Only - 7 A.M. to 4 P.M.  
Show Admission \$1.50 - Under 12 Free  
150 QUALITY DEALERS

SELLING Advertising Art Deco, books, Cambridge, clocks, coins, collec-  
tibles, Depression glass, dolls, Fiesta, fine early furniture, Heisey, jewelry,  
lamps, oak furniture, post cards, pottery, good primitives, tools and print  
shop items



4214 North High Street, Columbus, Ohio 43214  
(614) 267-8163 (614) 263-6830 (614) 885-2352

NEXT SHOW: February 21, 1988

## The DAZE

★ SPECIAL OFFER  
to NCC friends  
\$2. off the 1 year  
subscription price,  
when on this form  
or copy of.

The Original, National monthly newspaper dedicated to the buying, selling & collecting of colored glassware and china including Depression Glass and the Elegant Glass (Cambridge, Heisey, Fostoria etc.) We educate and inform you each month with feature articles by top notch columnists, readers "finds", club happenings, show news and a multitude of ads. Find those missing pieces to your 30s, 40s or 50s pattern. Can't identify it? Perhaps we can help. "Keep up with what's happening with a subscription to the DAZE. Buy, sell or trade from the convenience of your easy chair.

Name \_\_\_\_\_ Street \_\_\_\_\_

City \_\_\_\_\_ State \_\_\_\_\_ Zip \_\_\_\_\_

1 yr. \$15.00  2 yrs. \$29.00  \$1.75 single current copy  
 Check enclosed  MasterCard  Visa

Exp. date \_\_\_\_\_ Card No. \_\_\_\_\_

Signature \_\_\_\_\_

Orders to D.G.D., Box 57NC, Otisville, MI 48463

Please allow 30 days for your first issue— Canadian subscribers, add \$1. per year and subscribe by charge card only! This Special Offer May Not Be Combined With Other Special Offers

WELCOME TO GLASS COUNTRY!

I-70

STOP AND SEE US

ROUTE 40

WE FEATURE GLASSWARE OF:  
CAMBRIDGE, HEISEY, FENTON & FOSTORIA

Plus a full line of Art Pottery and a General line of Quality Antiques

# Stage Coach Antique Mall

RT. 40, ONE-HALF MILE WEST OF I-70 NORWICH EXIT #184  
MANY DEALERS-WIDE SELECTION-PLENTY PARKING

DORIS AND ROY ISAACS  
BUY AND SELL  
614-872-3720



7525 EAST PIKE  
NORWICH, OHIO 43787

MON THRU SAT 10-5:30 SUN 12-5:30  
SUMMER EVENING HOURS BY CHANCE

MANY DEALERS - PLENTY OF PARKING

# DEALERS



# DIRECTORY

NOTE: When writing to the Dealers listed here, please enclose a SASE!

<p><b>MILBRA'S MATCHING SERVICE</b> P.O. Box 363, Rio Vista, TX 76093 <b>Milbra Long</b> 817 / 645-6066 FOSTORIA * CAMBRIDGE * HEISEY * DEPRESSION ERA GLASSWARE <b>BUY and SELL</b></p>	<p><b>BENICIA ANTIQUE SHOP</b> 305 First Street Benicia, California 94510 <b>OPEN 11 AM - 5 PM</b> Closed Monday Z. E. LOPES 707-745-0978</p>	<p><b>THE MUTED SWAN ANTIQUES</b> 5486 Peachtree Rd. Chamblee, GA 30341 Heart of Chamblee Antique Row Specializing in Cambridge, Heisey and Fostoria Bill &amp; Pat Miller 404-451-7620</p>
<p><b>ANDREJCAK'S ANTIQUES</b> 14533 Bayes Ave. Lakewood, Ohio 44107 Joe &amp; Karen Andrejcek 216-226-3417 <b>SHOWS ONLY — CAMBRIDGE — FENTON — CHINA</b></p>	<p><b>VISIT HISTORIC BENICIA</b> and its 28 shops Off Interstate #80 ..... ..... North of San Francisco</p>	<p><b>SPECIALIZE IN CAMBRIDGE GLASS &amp; ANTIQUES</b> <b>DOYLE L. BYINGTON</b> 553 Sanchez Street, San Francisco, CA 94114 415/621-1854 <b>Shows: Mail-Order - Buy &amp; Sell - By Appointment</b></p>
<p><b>BOGART'S ANTIQUES</b> Stagecoach Mall, Building #2 Norwich, OH 43767 ***** <b>Jack and Sharon Bogart</b> 614/826-7439 and 614/872-3514 ***** BUY - SELL - APPRAISE - REFINISH SEAT WEAVING - CLOCK REPAIR COPPER &amp; BRASS POLISHING <b>GENERAL LINE CAMBRIDGE GLASS</b></p>	<p><b>ANTIQUES ON THE MALL</b> SPECIALIZING IN CAMBRIDGE GLASS Stagecoach Mall - Bldg. 3 - Norwich, OH Virginia Bennett 614/432-4483 64183 Warne Drive, Cambridge, OH 43725</p>	<p><b>BERKELEY ANTIQUES</b> 69 Berkeley St., Boston, MA 02116 <b>OPEN: Monday thru Saturday 11 AM to 5 PM</b> GEORGE &amp; FRANK 617/426-1048 <b>DUNCAN, CAMBRIDGE, HEISEY, GENERAL LINE</b></p>
<p><b>THE GLASS CUPBOARD</b> 39 Shire Oaks Drive Pittsford, New York 14534 Marcia Ellis Cambridge, Duncan Miller (716) 586-7596 Shows, Mail Order, Appt.</p>	<p><b>JUDY'S ANTIQUES</b> Judy Bennett 422 S. Ninth Street (Corner of Jefferson) Cambridge, Ohio 43725 <b>BUYING Ph. 614-432-5855 SELLING</b> <i>Cambridge Glass my Specialty</i></p>	<p><b>"Happiness Is" - The Stultzs</b> 3106 Warren Court, Glen Allen, VA 23060 Shows and Mail (Richmond Area) 804/262-1273 GLASS CIRCA 1890-1960</p>
<p><b>PEG AND DALE GOTSCHALL</b> Antiques, Cambridge and Other Quality Glass 833 N. 6th St., Cambridge, Ohio 43725 Phone 614/432-5529 Stagecoach Mall — Bldg. 2 — Norwich, Ohio</p>	<p><b>GREEN ACRES FARM</b> 2678 Hazelton Etna Rd., Pataskala, OH 43062 (State Route 310 North) Sat. &amp; Sun. 1-7 PM 614/927-1882 <b>Antiques, Crystal Glass and Collectibles</b></p>	<p><b>MOSTLY HEISEY</b> 16 Clayton Place, Albany, NY 12209 Rhoda Curley 518 / 482-6272 <b>SHOP and MAIL ORDER</b></p>
<p><b>THE HITCHING POST</b> 7467 S. R. 88 Ravenna, OH 44266 Ph. 216-296-3686 D. McDaniel <b>CAMBRIDGE — HEISEY — GENERAL LINE</b></p>	<p><b>BUY-SELL 513/390-3617</b> <i>Taste of Honey</i> Glassware—Collectibles CLARKE &amp; CAROLE WEST 3433 Turner Dr. Springfield, OH 45504</p>	<p><b>1886 HOUSE</b> East Schodack, N.Y. 12063 <b>MAIL and SHOWS</b> Laurie Cruise 518-477-5895 <b>CAMBRIDGE - NORITAKE - AZALEA - D.G.</b></p>
<p><b>L &amp; M ANTIQUES</b> 1331 S.E. 4th Ave., Pompano Beach, FL 33060 Lydia &amp; Cliff McNeil 305/943-2274 <b>CAMBRIDGE &amp; FOSTORIA OUR SPECIALTY</b> Buy &amp; Sell Shows Only</p>	<p><b>REMEMBRANCES</b> 7597 Daphne Dr., No. Syracuse, NY 13212 Shirley S. Ladouceur 315 / 458-5297 ANTIQUES and COLLECTIBLES <b>MAIL ORDER SHOWS APPOINTMENTS</b></p>	<p><b>MARGARET LANE ANTIQUES</b> 2 E. Main St., New Concord, OH 43762 Lynn Welker 614/826-4418 <b>CAMBRIDGE GLASS MATCHING SERVICE</b> Hours Mon.-Fri. 1-5 PM or by Appointment</p>
<p><b>THE GLASS URN</b> 456 West Main Street, Suite G. Mesa, AZ 85201 602 / 833-2702 Mail Order Shows Open Shop <b>CAMBRIDGE, FOSTORIA, HEISEY, ETC.</b></p>	<p><b>AL STEELE</b> Westerville, Ohio 614-882-6483 or 614-882-7124 Mail Orders and Shows Only <b>HEISEY — CAMBRIDGE — PATTERN GLASS</b></p>	<p><b>BUD'S TRADING POST</b> GENERAL STORE — FLEA MARKET 501 Wheeling Ave. Cambridge, OH 43725 10-5 Mon. thru Sat. 614-432-4688 <b>CAMBRIDGE - PATTERN - ART GLASS</b> This Bud's for Y'all</p>

# HAVE MORE FUN COLLECTING GLASS - JOIN A NATIONAL GLASS CLUB

## BECOME MORE KNOWLEDGEABLE ABOUT YOUR COLLECTIBLE GLASS

The National glass collecting clubs listed below have each been organized to serve you, the collector. Each club is dedicated to the education of the collector, and the preservation of their particular type or manufacture of glassware. Each would appreciate the opportunity to help you achieve more satisfaction from your collection.

If you are interested in membership in any of these organizations, check the list below. The appropriate club(s) will acknowledge your application with either a membership card (if remittance is enclosed) or additional information as required.  
MAIL TO:

### NATIONAL GLASS CLUBS

P.O. Box 416  
Cambridge, OH 43725

My Name is \_\_\_\_\_

Address \_\_\_\_\_

City \_\_\_\_\_ State \_\_\_\_\_ Zip Code \_\_\_\_\_

I am interested in the following club(s)

- |  |         |
|--|---------|
| _____ Fenton Art Glass Collectors of America, Inc. | \$10.00 |
| _____ Fostoria Glass Society of America, Inc.      | \$10.00 |
| _____ Heisey Collectors of America, Inc.           | \$15.00 |
| _____ National Cambridge Collectors, Inc.          | \$13.00 |
| _____ National Depression Glass Association, Inc.  | \$10.00 |
| _____ National Duncan Glass Society                | \$10.00 |
| _____ National Imperial Glass Collectors Society   | \$10.00 |
| _____ Tiffin Glass Collectors Club                 | \$15.00 |

Please make check  
payable to the name of  
the organization you  
wish to join

## 1988 AUCTION

Saturday, FEBRUARY 27, 1988  
THE SHENANDOAH INN  
Old Washington, Ohio

JANUARY  
1988



### New Year's Day

*A time to raise glasses  
And gird for new goals—  
When our cup runneth over  
And also our Bowls.*

National Cambridge Collectors, Inc.  
P. O. Box 416 Cambridge, Ohio 43725

FIRST CLASS MAIL  
U.S. POSTAGE  
**PAID**  
So. Vienna, Ohio  
45369  
Permit No. 15

**FIRST CLASS MAIL**

### Membership Renewal Notice

This is your last issue of the *Crystal Ball*—if the date on your address label reads **1-88**.  
*Please renew now!*



NATIONAL CAMBRIDGE COLLECTORS, Inc.  
**AUCTION INFORMATION**

AUCTIONEER: CRAIG CONNELLY

ADMISSION: \$1.00

LOCATION: Shenandoah Inn  
Intersection I70 & Route 285  
Old Washington, Ohio (6 miles East of Cambridge)

TIME: February 27, 1988 PREVIEW: 9:30 AM ACUTION: 10:30 AM

All glass guaranteed to be Cambridge. The auction committee has checked all glass to be auctioned. All pieces should be examined immediately and returned before five items are sold if the article is not as represented. Any damage is indicated in this Catalog. If no color is indicated, the item is crystal.

TERMS: Cash or check with proper identification, day of sale. All sales are subject to 6% Ohio Sales tax. Dealers may sign an exemption form if the items are purchased for resale, in which case, no tax will be charged.

CATALOG INSTRUCTIONS: Number references may be found in the National Cambridge Collectors publication or Welker reprints. The number in parenthesis ( ) at the end of each listing indicates the amount of items to be sold. Bidding will be by the piece if a number occurs at the end or as a lot if pair, set or lot is indicated. You may buy 1 piece of any item if a number appears at the end of an item description.

MAIL BIDS: All bids must be accompanied by a check for each lot. Bids will be executed secretly, and the bidder will pay only the final auction price. Please include a stamped, self-addressed envelope with bids. You will be notified if you are the successful bidder. If not, your check(s) will be returned, and the final selling price will be noted. Ohio residents, please include 6% sales tax or your Vendor's #. If you wish to have the pieces shipped to you, please include a separate check for adequate postage. All pieces will be shipped via UPS the week immediately following the auction. Please include your UPS delivery address. All items are sold in perfect condition unless noted, and you may expect to receive them that way if you mail bid. All items will be carefully checked again before they are shipped. For additional information, phone (614) 826-7414.

Bids must be received by February 26 to be eligible. Mail bids to: Lynn Welker 2 East Main St. New Concord, Ohio 43762. Make checks payable to: National Cambridge Collectors, Inc.

Motel Reservations: Phone (614) 489-5511. Mention N.C.C. for reasonable rates. Food available on the premises.

QUARTERLY MEETING: Friday, February 26 at 8:00 PM. An informative meeting will be presented as well as a preview of the auction glass. Bring a friend and your Show and Tell glass to the meeting.

Additional auction catalogs: \$1.00 postpaid or at the door.

1. #1402/100 Amethyst Tally-Ho tall sherbet, Crystal stem & foot (8)
2. #3450 Carmen Nautilus 12 oz. tumblers (4)
3. #3011 Crown Tuscan Nude cocktail, Mandarin Gold bowl
4. SS10 Crown Tuscan Nude 5" shell comport
5. SS17 Crown Tuscan 9" shell bowl (chip on 1 foot)
6. SS35 Crown Tuscan cigarette box base only
7. #3400/4 Royal Blue 12" ftd. bowl (wear inside)
8. W132 Milkglass Martha Washington 8½" ftd. fan vase, orig. label
9. Amber Wide Optic ftd. tankard pitcher, gold encr. band (handle crack)
10. #432 Ebony Doric Column 9¼" candlestick, mold flaw at bottom (1)
11. #3500/41 Crown Tuscan 10" urn and cover
12. Crown Tuscan 4" dophin candlestick (1)
13. #106 Azurite 6" sweetmeat, 4 part, handled
14. #4 Pomona Green ftd. sugar & creamer, rare (pair)
15. #1537 Cambridge Arms 5" peg nappies with candlewell (2)
16. #1538 Cambridge Arms 5¾" peg nappy with candlewell
17. #18 Everglades satin 16" Swans bowl, 3 ftd.
18. #1202 Heatherbloom 12 oz. Georgian tumbler, rare
19. #319 Peachblo 9 oz. Georgian tumbler, signed
20. #319 Moonlight Blue 9 oz. Georgian tumbler (1 chip) (6)
21. #319 Crystal 9 oz. Georgian tumblers, light scratches (12) (lot)
22. #317 Crystal 5 oz. Georgian tumblers (8) (lot)
23. #317 Moonlight Blue 5 oz. Georgian tumbler
24. #1201 Peachblo 2½ oz. Georgian tumbler, signed, original label
25. #319c Smoke Georgian candy box & cover
26. #319c Carmen Georgian candy box & cover
27. #319c Mandarin Gold (2) & Pink (1) Georgian candy bases (3)
28. #16 Windsor Blue 7" shell comport, signed
29. #332 Primrose 7" 3 section relish, hdd, gold encrusted border trim
30. #235 Primrose 7¾" candlesticks, black enamel trim (pair)
31. #933 Light Emerald Etch #520 (3) cups/saucers (4) 8" plates, sugar (lot)
32. #933 Light Emerald Etch #520 (3) cups, (5) saucers, signed (lot)
33. #3400/87 Gold Krystal 11" hdd. celery, signed
34. #3139 #992 Regency rock crystal cut 10 oz. goblets (2)
35. #1401 Mandarin Gold Jefferson 3 oz. cocktails, orig. labels (6)
36. #3400/158 Crystal hdd. cocktail shaker, cut, orig. chrome top
37. #62 Primrose 7¼" tall comport, black enamel trim
38. #44 Crown Tuscan 6" ftd. shell vases (2)
39. #3400/93 Carmen 5½" ivy ball, unusual
40. #3450 Amber Nautilus 84 oz. jug & (3) 12 oz. tumblers (set)
41. Amber cordial decanter, Farber Duchess Lace holder, orig. stopper
42. Mulberry Block Optic 8½" ftd. candy & cover, worn gold trim
43. #3400/1303 Light Emerald 7" ftd. vase, crystal stem & foot
44. #870 Peachblo 11" handled tray, Etch #738, gold encrusted
45. #3011 Carmen Nude cupped comport (tall)
46. #3011 Crystal Nude flared comport (tall)
47. #3011 Forest Green Nude flared comport (tall)
48. #3011 Royal Blue Nude flared comport (tall)
49. #3011 Royal Blue Nude cigarette box (Nude misshapen, nick on lid)
50. #3400/91 Peachblo 8" 3 part relish, Farber Art Deco Ladies holder
51. #3400/91 Royal Blue 8" 3 part relish
52. P575 Crown Tuscan 9" cornucopia vase
53. #50 Crown Tuscan 8" dolphin candlestick (1)
54. #62 Cascade 12½" 4 ftd. bowl, flared
55. #3500/31 Moonlight Blue 6" Ram's Head candlesticks (pair)
56. #1402/100 Carmen Tally-Ho tall sherbets (4)
57. #1402/38 Royal Blue Tally-Ho 34 oz. decanter, no stopper
58. #1402/35 Royal Blue Tally-Ho 12 oz. steins (3)
59. #1263 Bottle, etched Oil/Vinegar, original label
60. #702 Crown Tuscan miniature cornucopia, gold trim
61. #3400 Milkglass creamer, brass Farber holder
62. #13 Everglades 13" Tulips bowl
63. #1236 Amethyst ivy ball, crystal ring stem and foot
64. #3400/103 Crown Tuscan 6" globe vase, gold encr. Portia, acid sign.
65. Pink opaque Yardley jar, large octagon shape, original lid
66. #745 Light Emerald 12½" LeFleur bowl, satin finish flowers
67. #1316 Crystal 7" rabbit box and cover, rare

68. Rubina Block Optic 8½" comport, signed
69. #1715 Stackaway ashtray set, M.Blue,Pink,Pist, Gold, orig. wood base
70. #3400/119 Amethyst 12 oz. decanter & (3)#1341-1 oz. cordials (set)
71. #3011 Crown Tuscan Nude ashtray
72. #1236 Royal Blue ivy ball, crystal ring stem & foot
73. #168 Azurite 10" hdd. sandwich tray, black enamel trim
74. Primrose 11¼" rectangular dresser tray
75. #3400/707 Light Emerald Rosalie etch #731-11" cakestand, rare
76. #3143/39 Moonlight Blue Gyro Optic 86 oz. ice lip pitcher
77. #2 Milkglass Seashell 7" plate
78. #153 Helio 8" plate, star bottom, signed
79. #168 Ivory 10" hdd. sandwich tray
80. #94½ Peachblo 4½" X 7" sweet pea vase, signed
81. #390 Crystal 6" round ashtray on ring stem & foot, silver rim on foot
82. SS2 Crown Tuscan 7" shell plates, signed (2)
83. #1263 Amber French Dressing bottle, original amber stopper
84. #3011 Carmen Nude table goblet
85. #693/3000 Satin 2 pc. canape set, red enamel Hunt Scene, unusual
86. #3011 Crown Tuscan Nude cocktail, Gold Krystol bowl
87. #1221 Crystal Swan 5 oz. punch cups (3)
88. P940 King Edward rock crystal cup individual creamer
89. #2631 Marjorie signed Nearcut cruets, slight pattern roughness
90. #2651 Feather Nearcut 2½ oz. whiskey
91. #2651 Feather Nearcut wine
92. #2651 Feather Nearcut signed pitcher(flaw at spout)&(6) tumblers (set)
93. #2651 Feather signed Nearcut wine pitcher, gold trim
94. #2651 Feather signed Nearcut cruets
95. #2891 Guernsey Semi-Colonial miniature cakestand, rare
96. Sweetheart signed Nearcut child's sugar, creamer, & spooner (set)
97. #2636 Nearcut ½ gallon tankard water pitcher, unusual
98. #2835 Nearcut laydown cornucopia vase, ruffled rim
99. Countess Nearcut miniature night lamp, rare
100. #2699 Buzz Saw Nearcut green carnival tumbler, excellent color
101. #2699 Buzz Saw Nearcut 2 piece 14½" vase, rare
102. #2766 Thistle Nearcut tumblers (3 signed) (5)
103. #2766 Thistle signed Nearcut green carnival 11" bowl, rare
104. #2780 Strawberry signed Nearcut 7½" plate
105. #2656 Star Nearcut red flash 8½" deep bowl, some scratches, unusual
106. #518 Amber (dark) 8½" Draped Lady figure flower frog
107. Crystal 8" Draped Lady lamp base
108. #1141 Lady Leg satin bookends(1-foot chip, 1-base nick) rare (pair)
109. #513 Peachblo 13" Draped Lady figure (open bubble under base)
110. #513 Light Emerald 13" Draped Lady figure flower frog
111. #1115 Amber 11" Bashful Charlotte figure flower frog
112. #1115 Peachblo 11" Bashful Charlotte figure flower frog
113. #1115 Crystal 11" Bashful Charlotte figure flower frog
114. #1114 Satin 6" Bashful Charlotte figure flower frog (chips under base)
115. #1114 Crystal 6" Bashful Charlotte figure flower frog
116. #518 Crystal 8½" Draped Lady figure flower frog
117. #70 Ebony 3½" Turtle figure flower block, rare
118. #577 Crystal 8" Horn of Plenty
119. #1236 Ebony ivy ball, crystal ring stem & foot
120. #1236 Crystal ivy ball, crystal ring stem & foot, unusual
121. #3400/38 Amethyst 80 oz. ball jug & (4) 12 oz. tumblers (set)
122. #3400/38 Crystal 80 oz. ball jug, Sterling overlay grapes decor
123. #3400/156 Forest Green 12 oz. decanter & (6) #1341-1 oz. cordials(set)
124. #1301 Forest Green 10" vase, crystal foot
125. #5000/12 Forest Green Martha Washington 10 oz. ftd. tumblers (4)
126. #1402 Tally-Ho 12 oz. stein with original chrome lid, rare
127. #1402/100 Tally-Ho tall sherbets, Platinum band trim (2)
128. #3500/57 Crown Tuscan 8" 3 part candy box & cover
129. SS31 Mandarin Gold 8" oval shell dish, 4 ftd.
130. #1476 Salt and pepper, original chrome lids (pair)
131. #550 Mulberry (early) Wide Optic 10 oz. ftd. mug, gold encr. etch trim
132. SS46 Crystal Seashell 7½" Snail flower holder, Optic interior
133. #3500/90 Forest Green cigarette holder w/crystal stem & ashtray foot
134. #645 Moonlight Blue epergne base, unusual



135. #1066 Moonlight Blue 3½ oz. cocktails, M.Blue stem & foot (5)
136. #165 Mandarin Gold Cascade candy box & cover
137. P54 American Beauty Rose gold encrusted 6" ftd., 2 hdd. basket
138. W87 Milkglass 12" urn and cover
139. W92 Milkglass Mt. Vernon ice bucket w/chrome handle, rare
140. W81 Milkglass Mt. Vernon 2 hdd. urn salt
141. #1237 Crown Tuscan 9" ring stemmed vase
142. #3900/114 Corinth 32 oz. martini pitcher, Optic
143. #3400/156 Amber 12 oz. cordial decanter, Farber holder, orig. stopper
144. #1519 Smoke 8" vase
145. #2355 Primrose 10" ftd. vase, ruffled top
146. #34 Pistachio, M.Blue, Pink, Gold 3" shells (1 each)
147. #34 Mocha 3" shells (2)
148. #3400/71 Portia etch 3" 4 toed nutcup, signed
149. #3400/71 Amber 3" 4 toed nutcup (2)
150. #3400/71 Peachblo 3" 4 toed nutcup
151. #3400/71 Light Emerald 3" 4 toed nutcup
152. #1401 Jefferson 1 oz. cordial
153. #3650 Minton Wreath rock crystal cut 1 oz. cordial
154. #1066 Moonlight Blue 1 oz. cordial, optic, blue stem & foot
155. #1327 Forest Green 1 oz. cordial, gold encrusted foot
156. #1327 Pink, F.Green (2), Mocha, Tahoe, Pistachio, M.Blue 1 oz. cordials (7)
157. #87 Mt. Vernon 1 oz. cordials (8)
158. #1 Amber twist muddler
159. #1 Royal Blue twist muddler
160. #1 Crystal twist muddler
161. #2 Crystal rooster muddler
162. #1040 Crown Tuscan 3" swan, Style III (chip under 1 fin)
163. #1040 Carmen 3" swan, Style III
164. #1040 Peachblo 3" swan, Style II, signed (1 fin chip)
165. #1371 Amber Bridge Hounds (1 has label) (2)
166. #1371 Forest Green Bridge Hound, original label
167. Crystal Squirrel
168. Top Hat cigarette holder, red flashed brim, engraved, Myrtle 1928
169. Carmen Top Hat ashtray
170. Crystal Top Hat ashtray
171. #15 Milkglass Seashell 6" comport, Charleton enamel rose decor
172. Forest Green Farber Nude comport
173. Crystal doorknobs with original fittings
174. #3500/44 Forest Green 8" ftd. urn vase
175. #1 Light Emerald Keg set, (small line at spigot), Ebony tray/stopp.(set)
176. #2 Violet Mt. Vernon 6½ oz. tall sherbet, rare
177. P728-5 pc. stack ashtray set, Crystal, Blue, Gold, Pink ashtrays (set)
178. #139 satin decalware 5" cheese compote
179. #135 satin decalware 10" cheese and crackers set
180. #10 Amber Everglades 3½" candlesticks (pair)
181. #1403 Crystal 8 oz. pilsners, Royal Blue stem & foot, unusual (2)
182. #3200 Carmen Cut Wild Rose 5 oz. punch cups (2)
183. #3500 Carmen 10 oz. goblet, long bowl, crystal stem & foot
184. #1402/1 Carmen Tally-Ho 18 oz. goblet
185. #1402/12 Carmen Tally-Ho 2½ oz. wine,
186. #1402/11 Carmen Tally-Ho 4 oz. oyster cocktail, original label
187. #1402/100 Carmen Tally-Ho cocktail, crystal stem & foot
188. #1402/100 Royal Blue Tally-Ho tall sherbet, crystal stem & foot
189. #3122 Carmen 3 oz. cocktail, crystal stem & foot
190. #1066 Carmen 3 oz. wine, crystal stem & foot
191. #1066 Carmen 3½ oz. cocktail, crystal stem & foot
192. #3 Carmen Mt. Vernon 10 oz. ftd. tumbler
193. #1044 Ebony 10½" swan, Style I, signed
194. #509 Peachblo Two Kid figure flower frog
195. #432 Ivory Ram's Head bowl & 9½" Doric Column candlesticks, rare (set)
196. #1066 Achilles cut oval cigarette holder with ashtray foot
197. #319c Carmen Georgian candy base
198. #3400/14 Carmen 7" tall comport, gold encrusted Diane, rare
199. #1305 Peachblo 10" urn vase, crystal ring stem & foot
200. #1402/100 Royal Blue low sherbets, gold D1007 (gold wear on 1) (2)
201. #1043 Milkglass 8½" swan, Style III



- 202. #3400/115 76 oz. jug, Sterling overlay Chrysanthemums decor
- 203. #1621 Ebony 10" ftd. urn vase, gold encrusted Blossomtime, rare
- 204. SS12 Milkglass 8" Seashell comport
- 205. #410 Light Emerald 5½" X 6½" fan vase, Spiral optic, etched roses
- 206. #845 Light Emerald Oaken Bucket ice bucket, orig. tongs, signed
- 207. #3400/113 Amber 35 oz. decanter, original stopper
- 208. Jenny Lind candy box & cover
- 209. #1066 Mandarin Gold ivy ball, stem & foot all gold
- 210. Carmen prseed Rosepoint goblet, crystal stem & foot
- 211. Royal Blue pressed Rosepoint wine, crystal stem & foot
- 212. Amethyst pressed Rosepoint champagne, crystal stem & foot
- 213. Amber pressed Rosepoint low wine, crystal foot
- 214. #274 Crown Tuscan 10" ftd. vase, gold encrusted Rosepoint
- 215. #3025 Gold Krystol Gloria etch 4½ oz. oys. cocktails, amber foot (4)
- 216. #12 Cambridge Glass Co. Laboratory glass catalog, original
- 217. #2800/234 Azurite Community 1 gallon pitcher & basin set, extreme.rare
- 218. #9415 Azurite 10 oz. tumbler, unusual
- 219. #511 Crown Tuscan tombstone bookends, rare (pair)
- 220. #328 Ivory 12" stemmed cakestand
- 221. #3116 10 oz. goblet, cut Cambridge Glass, original label, rare
- 222. #3132 2½ oz. wines, rock crystal cut, unusual (2)
- 223. #3400/4 Carmen 12" sq. 4 ftd. bowl, elaborate Sterling overlay, sgd.
- 224. Forest Green 8" tall jardeniere (scratched), chip at top, unusual
- 225. #1226 Early 15 oz. pitcher, elaborate bird & floral cut for worker
- 226. #88 Wide Optic 1# candy jar & cover, elaborate bird & floral cut
- 227. #402 Peachblo Gloria etch 12" vase
- 228. #3122 Gold Krystol Diane etch 9 oz. goblets, crystal stem & foot (6)
- 229. #730 Light Emerald Cleo etch ½# candy & cover, Peachblo rose finial
- 230. #865 Light Emerald Decagon Cleo etch cups/saucers, signed (6)
- 231. #1147 Light Emerald Decagon Cleo etch ice tub, signed
- 232. Forest Green Stradivarius/Regency cocktails, crystal stem (1 as-is)(6)
- 233. #1119 Crown Tuscan eagle, usual annealing lines, extremely rare
- 234. #3500/109 Royal Blue Ram's Head 11" oval bowl, 4 ftd, rare
- 235. #1307 Royal Blue Japoinca 3 lite candlesticks, extremely rare (pair)
- 236. SS21 Windsor Blue 6" Seashell candy box & cover, signed
- 237. #50 Amethyst 8" Dolphin candlestick (1)
- 238. #3011 Amethyst Nude table goblet
- 239. #3011 Carmen Nude claret
- 240. #3011 Mandarin Gold Nude cocktail
- 241. #3011 Gold Krystol Nude brandy, Optic bowl
- 242. #3011 Pistachio Nude brandy
- 243. #3011 Forest Green Nude brandy
- 244. #623/8701 Peachblo Crackle 5 pc. bridge set (set)
- 245. #1066 Forest Green 7" ftd. ivy ball (foot ground)
- 246. Milkglass rolling pin, mkd. Imperial Mfg, Cambridge, orig. handles
- 247. Crystal 2 oz. mortar, marked C- 2 oz. on bottom
- 248. #1528 Mandarin Gold 10" vase, cut Wedding Rings, original label
- 249. #54 Caprice 10½" belled bowl, 4 ftd.
- 250. #129 Caprice 2 pc. mayonnaise set
- 251. 184 Caprice 12 oz. tumbler
- 252. #186 Caprice 7 oz. bitters bottle, replacement tube, rare
- 253. #184 Caprice 12 oz. tumblers, cloudy (5) 9lot)
- 254. #300 Caprice 3 oz. cocktails (tiny nick on 1 foot) (6)
- 255. #180 Caprice 5 oz. tumbler
- 256. #17 Caprice cups/saucers (5)
- 257. #101 Caprice 3 oz. oil cruet with original stopper
- 258. #117 Caprice 3 oz. oil cruet with original stopper
- 259. #204 Caprice triangle cigarette holder, 3" X 3"
- 260. #206 Caprice triangle 3" ashtrays, low style (7)
- 261. #183 Caprice 80 oz. ball jug pitcher
- 262. #21 Caprice 6½" plates (6)
- 263. #95 Cparice 2" 4 ftd. almond
- 264. #300 Caprice blown finger bowl, no liner
- 265. #129 Caprice Alpine 2 pc. mayonnaise set
- 266. #75 Caprice 3 lite epergne base
- 267. #136 LaRosa Caprice 6½" comport, tall
- 268. #28 LaRosa Caprice 14" plate, 3 ftd, scratched

269. #2 Moonlight Blue Caprice tall sherbets (7)
270. Moonlight Blue Caprice 10½" shallow cupped bowl, 4 ftd, unusual size
271. #131 Moonlight Blue Caprice 8" low ftd. plate
272. #126 Moonlight Blue Caprice 6¾" 2 part relish
273. #200 Moonlight Blue Caprice cocktail
274. #38 Pistachio Caprice sugar
275. #66 Mandarin Gold Caprice 13" bowl, crimped, 4 ftd.
276. #214 Mandarin Gold Caprice 3" ashtray
277. #3400/6 Appleblossom etch 11½" cheese & crackers set
278. #3400/54 Appleblossom etch cup/saucer, signed
279. #3400/67 Appleblossom etch 12" 5 part celery & relish service
280. #3675 Blossomtime etch 10 oz. goblets (6)
281. Martha #123 Blossomtime etch cup/saucer/8½" plate (set)
282. #3400/647 Candlelight etch 6" 2 lite candlestick (1)
283. Chantilly etch blown insert in Farber Nude stem comport
284. #3400 Chantilly etch jug style salt & pepper, Sterling lids (pair)
285. Pristine Chantilly etch 48 oz. cocktail shaker, original chrome lid
286. #3600 Chantilly etch 2½ oz. cocktails (2)
287. Martha Chantilly etch 8½" pickle tray
288. P940 Chantilly etch individual sugar & creamer, Sterling bases (pair)
289. Chantilly etch blown 8 oz. marmalade, Sterling lid & base
290. #3122 Diane etch 3 oz. cocktails (3)
291. #1402/95 Diane etch Tally-Ho twin salad dressing bowl only
292. #3500/124 Elaine etch 3¼" round ashtrays (3)
293. #3500/64 Elaine etch 10" 4 toed 3 compt. celery & relish, gold trim
294. #3500/26 Elaine etch gold encr. Ram's Head 12" fruit basket, rare
295. #3500/42 Minerva etch gold encr. 12" urn lamp, original fittings
296. #3130 Portia etch 3 oz. cocktails (3)
297. #3900/118 Roselyn etch 32 oz. pitcher
298. #3400/13 Rosepoint etch 4 toed 6" comport
299. #3121 Rosepoint etch bell, guaranteed original
300. #3500/25 Rosepoint etch 9" Ram's Head bowl, rare
301. #3900/72 Rosepoint etch 6" 2 lite candlestick, gold trim (1)
302. #3500/167 Rosepoint etch 7½" plate
303. #3500 Rosepoint etch 10 oz. ftd. tumbler
304. #3900/1177 Rosepoint etch salt & pepper, chrome lids (pair)
305. #3900/1177 Rosepoint etch salt & pepper, plastic lids (1 cloudy)(pair)
306. #3500/652 Rosepoint etch 11" celery
307. #3500/54 Rosepoint etch 6½" 2 hdd. low ftd. comport
308. #3500/1 Valencia etch cups/saucers (3)
309. #3500/129 Valencia etch 3½" square ashtray, original Valencia label
310. #3900/125 Wildflower etch 9" 3 part celery & relish
311. #3500/5 Wildflower etch 8½" plates (6)
312. #1300 Forest Green 8" ftd. vase, crystal base
313. #1236 Royal Blue ivy ball, crystal ring stem & foot
314. Light Emerald Weatherford powder box & cover
315. #141 Light Emerald Weatherford 6" ftd. candy & cover, cut lines
316. #160 Amber Weatherford 10¼" center handled sandwich tray
317. #3450 Royal Blue Nautilus salt & pepper (pair)
318. Helio 6½" candlesticks (pair)
319. #16 Helio 7½" shallow bowl
320. #1066 Mulberry (late, unusual color) 3½ oz. cocktails, labels (4)
321. P532 Rondo rock crystal cut mayonnaise & liner, original label
322. #7966 Rondo rock crystal cut 10 oz. cone ftd. tumblers (9)
323. #968 Laurel Wreath cut 2 pc. cocktail icers (1 insert as is) (4)
324. P572 Carmen Pristine 6" vase
325. #1337 Amber twist cigarette holder w/crystal stem & ashtray foot
326. #3400/144 Crystal cigarette holder w/ashtray foot & placecard holder
327. #3797/152 Cambridge Square ashtray & cigarette holder (2 pc. set)
328. P737 Canoe ashtray, original label
329. #387 Amber (dark) 2½" ashtray, polished top, signed
330. #1715 Mandarin Gold ashtray
331. #22 Mt. Vernon 3 oz. ftd. tumblers (3)
332. #2 Mt. Vernon tall sherbets (6)
333. #3 Mt. Vernon 10 oz. goblets, lavender tinge (2)
334. #14 Mt. Vernon 14 oz. tumblers, scratches (2)
335. #156/69 Martha oyster plate & sauce cups (4 sets)