



Cambridge Crystal Ball

Published monthly by the National Cambridge Collectors, Inc.
to encourage and report the discovery of the elegant and boundless product
of the Cambridge Glass Company of Cambridge, Ohio

Issue No. 175

November 1987

THOUGHTS FROM YOUR PRESIDENT

If you receive your CRYSTAL BALL a little late this month, be patient! It's only because Phyllis went into shock after receiving my article a few days before the deadline. Hope she recovers in time to do the mailing. Sorry about that Phyllis, but when I got up this morning I figured out that if I didn't get this article written today, it would be the 14th before I could get to it.

How can anyone that doesn't hold down a job, be so busy? Well, it seems that when you aren't working, you let everyone con you into doing things . . . because you really aren't busy! Then, all of a sudden, you meet yourself coming and going.

My wife Norma belongs to a Questers Group that is hosting their State Convention this weekend, and Helen Clark and I allowed them to con us into doing a glass display of Ohio Glass, both past and present. There was, however, a method to my madness in doing this. Gary Baker (assistant curator of the Chrysler Museum in Norfolk, Virginia, and past curator of the Oglebay Mansion Museum), is going to be their guest speaker. He is an authority on "Early Ohio Valley Glass," and I have a bone to pick with him!

Knowing that the only way I would have to

Membership Renewal Notice

This is your **last** issue of the *Crystal Ball*—if the date on your address label reads **11-87**.

Please renew now!

see and talk with him at an "all ladies" convention, was to agree to do the display, I did so. You see, Gary along with John Artzberger, who is administrator of the Oglebay Mansion Museum, are the ones who got me started into this madness of collecting glass and everything else that you just have to own. They taught classes at Oglebay in 1976 on "Early Ohio Valley Glass and Pottery." Why I ever went to those classes, I'll never figure out. I never collected anything in my life prior to that time, except the cavities in my teeth. I intend to let Gary hear about the way he has ruined my life and how I have to keep building rooms onto my house in order to hold all of my acquisitions (junk)! Seriously, I am looking forward to seeing him again.

**Don't forget the November Quarterly Meeting!
Saturday, November 7th at The Upstairs
632 Wheeling Ave., Cambridge, Ohio.**

You may still have time to call in your reservation -- phone Secretary, Janice Hughes at 614/432-7823). If you cannot attend the dinner, you may still attend the meeting and hear our guest speaker David Adair, who will present a program on "Railroads & Coal Mines of Guernsey County." **Cocktails start at 6 PM; Dinner at 7 PM (pre-order your dinner of baked Chicken, Ham, or Roast Beef @ \$9 ea.); Meeting at 8 PM, followed by Mr. Adair.**

You do not need reservations to attend the meeting only, but if you would let us know your intentions we would appreciate it, so that extra chairs can be provided.

continued on page 14

Cambridge Crystal Ball

Official publication of National Cambridge Collectors, Inc., a non-profit corporation with tax exempt status. Published once a month for the benefit of its members.

Membership is available for individual members at \$13 per year and additional members (12 years of age and residing in household) at \$3 each. All members have voting rights, but only one *Crystal Ball* will be mailed per household.

Back issues of the *Crystal Ball* are available (beginning with Issue No. 1, May 1973) for members only. Cost: 60 cents each or 12 issues for \$7.

1987-88 Officers & Committee Chairpersons

President	Willard P. Kolb
Vice-President	Mark A. Nye
Secretary	Janice Y. Hughes
Treasurer	William C. Smith
Sergeant-at-Arms	Marybelle Moorehead
Budget & Finance	David B. Rankin
By-Laws	J.D. Hanes
Convention	Mark A. Nye
Membership	Phyllis D. Smith
Museum	Billy F. Harbaugh
Program & Entertainment	Marlene K. Snyder
Project	Willard P. Kolb
Public Relations	William C. & Phyllis D. Smith
Publicity	Joseph Andrejcek
Study Group Advisor	Phyllis D. Smith
1988 Auction	Lynn M. Welker
1988 Antique Show	Joy R. McFadden
1988 Flea Market	Marybelle Moorehead
Crystal Ball Editor	Phyllis D. Smith

Classified Advertising Rates

5 cents per word \$1.00 minimum
We cannot mix type size in classified advertisements. Abbreviations and initials will count as words. Payment in full must accompany all ads.

Display Advertising Rates

<i>(Camera-ready ads preferred)</i>	Members	Non-Members
1/8 page (9 items)	\$ 4.00	\$ 6.00
1/4 page (20 items)	7.00	10.00
1/2 page (20 items)	12.00	18.00
3/4 page	17.00	25.00
Full page (50 items)	22.00	33.00

Dealers Directory

Five-line maximum \$12.00 for 12 months

Cambridge *Crystal Ball* assumes no responsibility for items advertised and will not be responsible for errors in price, description or other information.

Advertising copy, articles, club news and notices must be in our hands by the 10th of each month to assure publication in our next issue.

Paid advertisements containing reproductions or new glass will not knowingly be accepted for publication.

Opinions or information stated in any signed article or letter printed in the *Crystal Ball* are those of the authors and may or may not agree with National Cambridge Collectors, Inc. The Editor reserves the right to refuse and to edit any material submitted for publication so as to conform with the editorial style of the *Crystal Ball*.

Please Address All Correspondence to:

National Cambridge Collectors, Inc.
P.O. Box 416 Cambridge, Ohio 43725
President — Willard Kolb, 614/695-0695
Secretary — Janice Hughes, 614/432-7823
Editor — Phyllis Smith, 513/323-3888

NCC Museum of Cambridge Glass is located on U.S. Route 40, one-eighth mile east of I-77 near Cambridge. Hours: 12 noon to 4 p.m., Wednesday through Sunday (March through October). Closed Easter and July 4th.

Please notify us immediately of any change in your address.
Please enclose an SASE when requesting information.

CAMBRIDGE GLASS BOOKS FOR SALE

by National Cambridge Collectors, Inc.

* **COLORS IN CAMBRIDGE GLASS**
(128 pages - 60 color plates - fully indexed)
Hardbound with Price Guide \$19.95

* **1930-34 CAMBRIDGE GLASS CO. CATALOG REPRINT**
(250 page reprint of original catalog)
Hardbound with Price Guide \$14.95

* **1949-53 CAMBRIDGE GLASS CO. CATALOG REPRINT**
(300 page reprint of original catalog)
Hardbound with Price Guide \$14.95

* **1956-58 CAMBRIDGE GLASS CO. CATALOG REPRINT**
(164 page reprint of original catalog)
Paperback \$6.95

1985 COMBINED PRICE GUIDE
for 1930-34 & 1949-53 catalog reprints Postpaid \$5.75

*NCC MEMBERS ONLY: These publications are available at 10% discount - or all four (4) at one time for \$50.00.

by Bill & Phyllis Smith

CAMBRIDGE GLASS 1927-1929
(66 page reprint of original catalog)
Paperback with Identification Guide \$7.95

by Mark Nye

CAMBRIDGE STEMWARE
(95 Stemware lines with 107 illustrations)
Paperback \$14.95

by Cambridge Buffs Study Group

NEARCUT
(108 page reprint of 1910 Cambridge Catalog)
Paperback with Price Guide \$9.95

by Mary, Lyle and Lynn Welker

CAMBRIDGE GLASS CO.
(120 pages of reprint from 8 old catalogs)
Paperback \$6.95

CAMBRIDGE GLASS CO. BOOK II
(119 pages of reprint from old catalogs)
Paperback \$6.95

CAMBRIDGE, OHIO GLASS IN COLOR II
Spiralbound \$5.95

by Harold and Judy Bennett

1903 CAMBRIDGE GLASS CO. CATALOG REPRINT
(106 page reprint of an original catalog)
Paperback \$7.50

Address your orders to:

BOOKS
National Cambridge Collectors, Inc.
P.O. Box 416
Cambridge, OH 43725

Please add \$1.00 (P & I) per order.

(Not required for Price Guide)

Ohio residents please add 6% state sales tax.

DEALER DISCOUNTS AVAILABLE - PLEASE WRITE!

Butter Dishes

PART II

by MARK A. NYE

(Part I of this article appears in the February 1987 issue of the CRYSTAL BALL and can be purchased by our members, for \$1.00. Send your request to the club address.)

It seems like ages since I first wrote about Cambridge butter dishes for the CRYSTAL BALL, and in fact it was nine months ago that Part I of this series appeared.

At that time we covered butter dishes produced between the late 1920s and the final plant closing. This month we turn back the clock to the early years of production at the Cambridge Glass Company plant on Morton Avenue -- a period when butter dishes were a more common item in Cambridge pattern lines.

During the years 1903-1906, there were at one time or another, at least 16 different butter dishes produced by Cambridge. During these early years many patterns being produced were not named and, in fact, of the 16 butter dishes from this time period, only two had names appearing on catalog pages. These two were #2635 Fernland and #2626 Radium, both of which first appeared in the 1906 catalog and no doubt were original Cambridge designs.

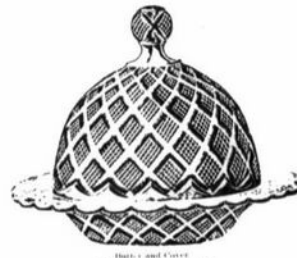


Butter and Cover.
#2635 Fernland

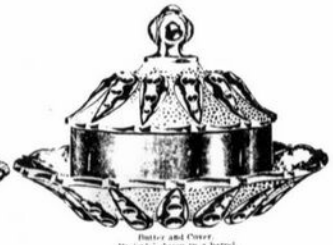


Butter and Cover.
#2626 Radium

Lines shown in the 1903 Cambridge catalog, that included a butter dish among the available items, were: #2500, #2501, #2502, #2503, #2504, #2508, #2510, #2511, #2577, #2589 and #2590. It is the opinion of this writer, and one held by others, that none of these designs were original to the Cambridge Glass Company; rather they were patterns first produced at other National Glass Company plants in prior years. It is known that the Cambridge #2510 line (shown in the 1903 Cambridge catalog) was first introduced



#2500



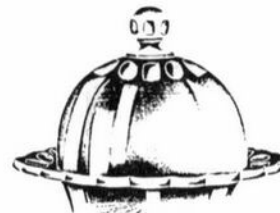
#2501



#2502



#2503



#2508



#2511



#2577



#2589



#2590

(see next page for #2504 and #2510)

by the Central Glass Company of Summitville, Indiana in 1898. (This company should not be confused with the better known Central Glass Company of Wheeling, West Virginia.) After the National Glass Company was founded, this pattern was also made by the Indiana Tumbler and Goblet Works at Greentown, Indiana, in both clear and a transparent blue. Retailers of this line included Sears & Roebuck, as it was shown in their 1901 and 1902 catalogs.

continued on next page

BUTTERS continued from last page



No. 2510, Butter and Cover.
Packed 4 1/2 dozen in a barrel.

#2510 Butter and Cover

Thus, it was hardly a new line when Cambridge began producing it at their plant as the #2510 line.

There were two butter and cover styles in the #2504 Line shown in the 1903 catalog. One was simply listed as "Butter and Cover" while the second, and apparently much smaller one, was described as "Packers Butter and Cover."



#2504 Line
Butter & Cover Packers Butter & Cover

The packers butter is assumed to be smaller than the regular butter since the latter was packed only four and a half dozen to the barrel, and the packers butter was packed ten dozen to the barrel. The 1906 catalog listed the #2504 packers butter as being packed 12 dozen to the barrel and in the 1910 catalog this item was called a small butter and cover and continued to be packed at 12 dozen per barrel.

First seen in the 1906 Cambridge catalog were butter dishes from the #2700, #2579 and #2625 lines; as well as the previously mentioned Fernland and Radium lines. Of these five, probably the #2579 was the only one not designed by or for Cambridge. The molds most likely originated from another National Glass Company plant.



Butter and Cover.
Packed 4 1/2 dozen in a barrel.

#2579 Butter and Cover



Butter and Cover.
Packed 4 1/2 dozen in a barrel.

#2700



Butter and Cover.
Packed 3 dozen in a barrel.

#2625

The 1910 Cambridge general catalog carried illustrations of 16 butters and covers with only three dating to the 1903-1906 period; these being #2504, #2508 and #2635 Fernland.

Among the 1910 patterns that included butters were several destined to become quite well known to collectors. These patterns included: #2750 Colonial, #2651 Feather, #2660 Wheat Sheaf, and #2631 Marjorie. With the exception of Colonial, no names were used in the 1910 Cambridge catalog. Only the Line numbers appeared.



Butter and Cover.

#2750 Colonial



No. 1
Butter and Cover

#2660 Wheat Sheaf



Covered Butter.

#2651 Feather



Covered Butter

#2631 Marjorie

Other butters shown in the 1910 catalog were from the Lines #2692 (Guernsey), #2656 (Star), #2647 (Dorothy), #2653 (Ribbon), #2694 (Spoons), #2630 (Plymouth), #2693, #2636 and #2641.



Butter and Cover.

#2692 Guernsey



Butter and Cover

#2656 Star

continued on next page



#2653 Ribbon



#2694 Spoons



#2630 Plymouth



#2693



#2636



2641. Butter or Cheese Plate and Cover.
#2641

The Feather butter is unique among the 1910 butters in that it will be found in purple Carnival, as well as crystal.

The #2656 Line was in production as early as January 1908, since a trade journal published that month carried Cambridge advertisements in which this Line was called "Near Cut Star Design" and "Star." There is no question that this is the pattern referred to since a 6 oz. tall sundae was shown and identified by line number. In the 1910 catalog no name was provided, but the following description was used in conjunction with this design: "Cut Sunburst very clear, fine in shape and most desirable for the trade where a clean, attractive pattern is wanted at a reasonable price."

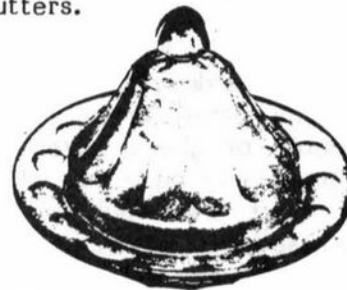
This #2656 line is known to Pattern Glass collectors as Star of Bethlehem. The design consists of a star with either six or eight points and associated rays. The butter dish and some other pieces have an eight pointed star while the majority of the items in the line have a six pointed star. The #2656 line is known with ruby flashing and gold edges. The

star, however, remains clear.

A nice feature of the 1910 catalog is that it incorporated a price list into the body of the catalog. Thus, we know that in 1910, the Marjorie butter and cover sold to the trade for \$3.20 a dozen. This was the highest price in this catalog for a butter and cover. The Feather butters were less expensive at \$2.20 per dozen.

The next known general Cambridge catalog is from circa 1917 and within its pages five butters from previous catalogs are illustrated. These being the ones from the #2631 Marjorie, #2750 Colonial, #2630 Plymouth, #2660 Wheat Sheaf, and the #2590 lines. At least three of these butter dishes, those from the #2750 Colonial, #2630 Plymouth, and #2660 Wheat Sheaf lines, were still in production when the 1920s dawned. However, by 1930 all of these early lines, with the exception of a few individual pieces (none of which were butter dishes), had been discontinued.

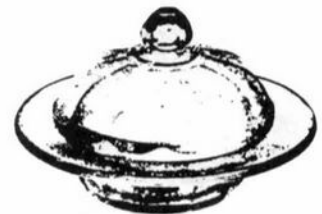
The first pieces of the #2800 Community Crystal design were shown shortly after 1910. By 1915-1917, there was an extensive array of items in this line, including: stemware, footed sherbets, vases, nappies and table sets which included a covered butter dish. The #2800 line, in fact, featured not one, but three covered butters.



#2800 - No. 1 Butter and Cover



No. 26 5" Butter Tub



No. 149 Butter

All three of these butters were being produced in the early 1920s, but sometime in the mid-1920s and before 1927, the Community line was discontinued. In the late 1930s the

continued on next page

BUTTERS continued from last page

stemware was put back into production, but there is no evidence that the butter dish was reissued. In addition to the covered butters, the #2800 line featured two individual butter pats, as shown here:



#27 3 1/2" Round Pat



#38 3 3/4" Oval Pat

Slightly similar in design to the #2800 Community line, but with different shaped pieces, is the #2892 or Guernsey Semi-Colonial design and it is from this line that our next butter dish comes. (Editor's Note: This #2892 line is exactly the same as the #2692 line illustrated on page 5.) The top to the butter from this line is reminiscent of a Moorish style dome. Introduced sometime between 1910 and 1917, it appears the #2892 line was most likely discontinued prior to 1920 and definitely was out of production by 1927.

There are several basic design elements that were and are used in several different ways to decorate glass; imparted by the mold, i.e. pressed or molded patterns, engraved or rock crystal cuttings, and cutting as it is known as cut glass. Similar patterns using these basic designs, for example Thumb Print, Sunburst, and Buzz Saw were developed by several companies and this often creates problems for today's students of glass. Even though they use the sunburst and buzz saw theme respectively, our next two butter dishes were definitely pressed by Cambridge since we have catalog pages showing the actual pieces with the patterns as developed by Cambridge.



Butter Dish and Cover.
#2351 Line



Butter Dish and Cover.
#2699 Buzz Saw

Little is known about the #2351 design, described in a Cambridge catalog only as "Heavy Pressed." Its main design element is a sunburst and it was probably first shown by Cambridge circa 1915. The line, along with the butter dish is shown in a catalog issued sometime after 1915. For the most part, the

pattern had been discontinued by 1920; the punch bowl and shakers being two known exceptions.

Cambridge actually referred to the #2699 line as the "Buzz Saw Design." #2699 Buzz Saw was probably introduced by Cambridge during the years between 1910 and 1915 and it continued in the Cambridge line until sometime after 1921. The butter dish from this line was pictured in both the circa 1915-1917 catalog and the circa 1920 catalog. The Buzz Saw pattern was one Cambridge called a "Medium Pressed" design. It is generally accepted these terms, along with "Light Pressed," were used by Cambridge to indicate the depth of the pattern in the glass, "Heavy," of course, being the deepest.

to be continued

(EDITOR'S NOTE: The 1910 Catalog referred to in this article was reprinted by the Cambridge Buffs Study Group and may be purchased thru N.C.C. See page 2 of this newsletter for more complete information.)



Butter and Cover.
#2647 Dorothy

WE GET LETTERS

Dear Phyllis: Enclosed are dues for coming year. The "Crystal Ball" is a highlight in this household. Due to the recent earthquakes my crystal Caprice collection has been severely reduced. I really lost some nice pieces. There was no structural damage to our home and we feel blessed that it wasn't worse than it was. I am still real skittish. We had another jolt around midnight Sunday night. We are located about five miles from Whittier (the center).

Somehow, I just thought I would jot you a few lines. I really enjoy the paper. Willard's column tickles me.

Fondly, Marcy Allenbaugh
Bellflower, CA



THE CAMBRIDGE GLASS COMPANY



49—10½ in. Belled Vase
Coral or Moonstone—\$30.00 Doz.
Crystal—\$22.50 Doz.



46—7 in. Shell Flower Holder
Coral or Moonstone—\$30.00 Doz.
Crystal—\$22.50 Doz.
A-Rb-Fg-Ame—\$22.50 Doz.



48—9 in. Belled Vase
Coral or Moonstone—\$22.50 Doz.
Crystal—\$15.00 Doz.



70—3½ in. Turtle Flower Block
Moonstone—\$7.50 Doz.
Crystal—\$5.00 Doz.



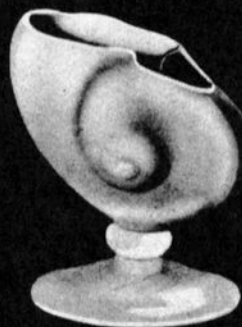
40—10 in. Flower or Fruit Center
Coral or Moonstone—\$60.00 Doz.
Carmen—\$82.50 Doz.
Crystal—\$45.00 Doz.
A-Rb-Fg-Ame—\$45.00 Doz.



2899—3 in. Flower Block
Coral or Moonstone—\$5.60 Doz.
Crystal—\$3.60 Doz.



42—8 in. Flower Center
Coral or Moonstone—\$45.00 Doz.
Crystal—\$37.50 Doz.
Carmen—\$67.50 Doz.
A-Rb-Fg-Ame—\$37.50 Doz.



44—6 in. Flower Center
Coral or Moonstone—\$22.50 Doz.
Crystal—\$18.75 Doz.
Carmen—\$30.00 Doz.
A-Rb-Fg-Ame—\$18.75 Doz.



47—9½ in. Cornucopia Vase
Coral or Moonstone—\$37.50 Doz.
Crystal—\$30.00 Doz.

C. Crystal—A. Amber—Rb, Royal Blue—Fg, Forest Green—Ame, Amethyst

The prices shown represent high retail prices. Write for discounts.

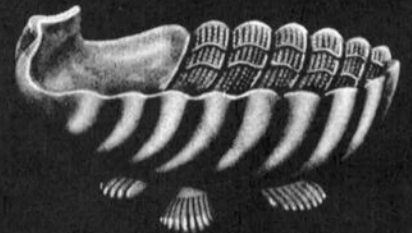
CAMBRIDGE, OHIO - - - U. S. A.



32-2 1/2 in. 3 Toed Indiv.
Nut Dish
Coral or Moonstone—\$4.40 Doz.
Crystal—\$3.15 Doz.



21-6 in. Fid. Candy Box & Cover
Coral or Moonstone—\$30.00 Doz.
Crystal—\$20.00 Doz.



31-8 in. Oval Dish
Coral or Moonstone—\$15.00 Doz.
Crystal—\$12.50 Doz.



15-6 in. Comport
Coral or Moonstone—\$15.00 Doz.
Crystal—\$12.00 Doz.



16-7 in. Comport
Coral or Moonstone—\$15.00 Doz.
Crystal—\$12.00 Doz.



12-8 in. Comport
Coral or Moonstone—\$30.00 Doz.
Crystal—\$22.50 Doz.
A-Rb-Fg-Amc—\$22.50 Doz.



10-5 in. Comport (figure)
Coral or Moonstone—\$22.50 Doz.
Crystal—\$15.00 Doz.



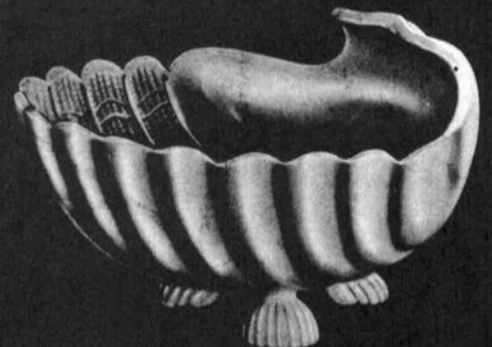
14-9 in. Comport
Coral or Moonstone—\$30.00 Doz.
Crystal—\$22.50 Doz.



18-10 in. 3 Toed Bowl
Coral or Moonstone—\$45.00 Doz.
Crystal—\$33.75 Doz.



11-7 in. Comport (figure)
Coral or Moonstone—\$37.50 Doz.
Crystal—\$24.75 Doz.



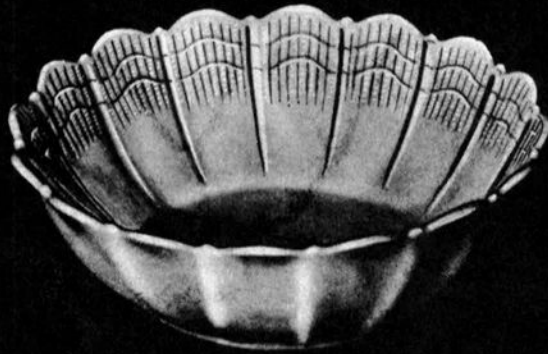
17-9 in. 3 Toed Bowl
Coral or Moonstone—\$45.00 Doz.
Crystal—\$33.75 Doz.
A-Rb-Fg-Amc—\$33.75 Doz.

C, Crystal A, Amber Rb, Royal Blue Fg, Forest Green Amc, Amethyst

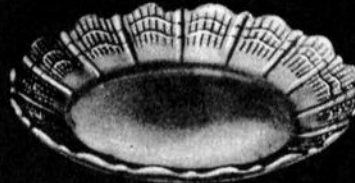
The prices shown represent high retail prices. Write for discounts.



THE CAMBRIDGE GLASS COMPANY



8-11 in. Salad Bowl
Coral or Moonstone—\$40.00 Doz.
Crystal—\$30.00 Doz.



5-7 in. Salad Plate (Rd)
Coral or Moonstone—\$7.50 Doz.
Crystal—\$6.20 Doz.
Carmen—\$11.90 Doz.



2-7 in. Salad Plate
Coral or Moonstone—\$8.15 Doz.
Crystal—\$6.50 Doz.
Carmen—\$13.15 Doz.
3-9 in. Dinner or Fish Plate
Coral or Moonstone—\$15.00 Doz.
Crystal—\$11.90 Doz.



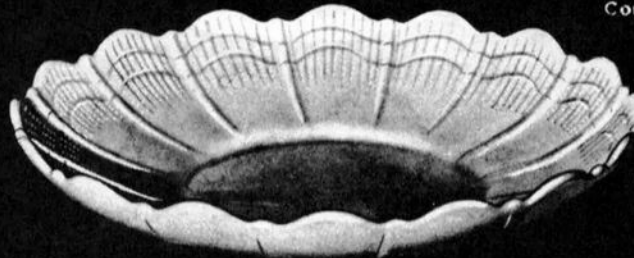
1-5 in. B. & B. Plate
Coral or Moonstone—\$5.60 Doz.
Crystal—\$4.90 Doz.
Carmen—\$7.25 Doz.



110-4 1/2 oz. Sea Food Cocktail
Coral or Moonstone—\$8.75 Doz.
Crystal—\$6.90 Doz.



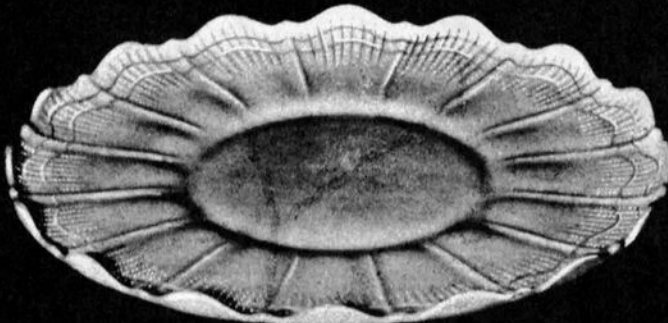
111-6 oz. Sherbet
Coral or Moonstone—\$10.00 Doz.
Crystal—\$7.50 Doz.



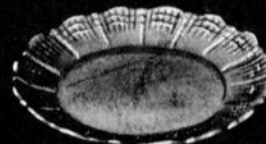
9-13 in. Salad Bowl, Shallow
Coral or Moonstone—\$40.00 Doz.
Crystal—\$30.00 Doz.



30-9 in. 4 Toed 3 Compt. Relish
Coral or Moonstone—\$30.00 Doz.
Crystal—\$18.75 Doz.



7-14 in. Sandwich Plate
Coral or Moonstone—\$40.00 Doz.
Crystal—\$30.00 Doz.



4-5 in. B. & B. Plate (Rd)
Coral or Moonstone—\$5.00 Doz.
Crystal—\$4.60 Doz.
Carmen—\$6.60 Doz.

C. Crystal—A. Amber—Rb, Royal Blue—Fg, Forest Green—Ame, Amethyst

The prices shown are list prices subject to your usual discounts.



51—8 in. Dolphin Candelabrum
w/Bobeche & Prisms
Coral or Moonstone—\$54.00 Doz.
Crystal—\$40.25 Doz.
Carmen—\$61.50 Doz.
A-Rb-Fg-Ame—\$40.25 Doz.



67—5 in. 2 Holder Candlestick
Coral or Moonstone—\$15.00 Doz.
Crystal—\$10.00 Doz.
A-Rb-Fg-Ame—\$10.00 Doz.



66—4 in. Ftd. Candlestick
Coral or Moonstone—\$11.25 Doz.
Crystal—\$8.75 Doz.
A-Rb-Fg-Ame—\$8.75 Doz.



50—8 in. Dolphin Candlestick
Coral or Moonstone—\$22.50 Doz.
Crystal—\$18.75 Doz.
Carmen—\$30.00 Doz.
A-Rb-Fg-Ame—\$18.75 Doz.



647—6 in. 2 Holder Candlestick
Coral or Moonstone—\$22.50 Doz.
Crystal—\$20.60 Doz.
Carmen—\$33.00 Doz.
A-Rb-Fg-Ame—\$20.60 Doz.



60—9 in. Candlestick
Coral or Moonstone—\$30.00 Doz.
Crystal—\$24.75 Doz.
Carmen—\$33.00 Doz.
A-Rb-Fg-Ame—\$24.75 Doz.



68—5 in. 3 Holder Candlestick
Coral or Moonstone—\$25.00 Doz.
Crystal—\$22.50 Doz.
A-Rb-Fg-Ame—\$22.50 Doz.



61—9 in. Candelabrum (3011)
w/Bobeche & Prisms
Coral or Moonstone—\$61.50 Doz.
Crystal—\$56.25 Doz.
Carmen—\$64.50 Doz.
A-Rb-Fg-Ame—\$56.25 Doz.



33—4 in. 3 Toed Ash Tray
Coral or Moonstone—\$6.90 Doz.
Crystal—\$5.60 Doz.



35—Cigarette Box & Cover
Coral or Moonstone—\$18.75 Doz.
Crystal—\$15.00 Doz.



34—3 in. 3 Toed Ash Tray
Coral or Moonstone—\$4.40 Doz.
Crystal—\$3.15 Doz.

C. Crystal—A. Amber—Rb, Royal Blue—Fg, Forest Green—Ame, Amethyst

The prices shown are list prices subject to your usual discounts.



SEA SHELL CONSOLE SETS



67-5 in. 2 Holder Candlestick



44-6 in. Flower Center
44/67-3 pc. Set
Coral or Moonstone-\$4.40 per Set
Crystal-\$3.15 per Set
A-Rb-Fg-Ame-\$3.15 per Set



67-5 in. 2 Holder Candlestick



66-4 in. Ftd. Candlestick



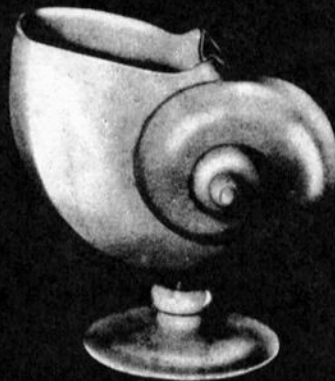
46-7 1/2 in. Shell Flower Holder
46/66-3 pc. Set
Coral or Moonstone-\$4.40 per Set
Crystal-\$3.25 per Set
A-Rb-Fg-Ame-\$3.25 per Set



66-4 in. Ftd. Candlestick



66-4 in. Ftd. Candlestick



42-8 in. Flower Center
42/66-3 pc. Set
Coral or Moonstone-\$5.60 per Set
Crystal-\$4.40 per Set
A-Rb-Fg-Ame-\$4.40 per Set



66-4 in. Ftd. Candlestick



67-5 in. 2 Holder Candlestick



12-8 in. Comport
12/67-3 pc. Set
Coral or Moonstone-\$5.00 per Set
Crystal-\$3.50 per Set
A-Rb-Fg-Ame-\$3.50 per Set



67-5 in. 2 Holder Candlestick

C. Crystal-A. Amber-Rb. Royal Blue Fg. Forest Green-Ame. Amethyst

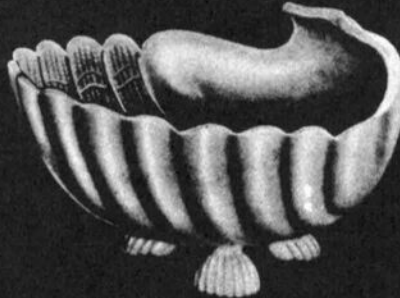
The prices shown are list prices subject to your usual discounts.



SEA SHELL CONSOLE SETS



647-6 in.
2 Holder Candlestick



17-9 In. 3 Toed Bowl
17/647-3 pc. Set
Coral or Moonstone—\$7.50 per Set
Crystal—\$6.50 Doz.
A-Rb-Fg-Ame—\$6.50 Doz.



647-6 in.
2 Holder Candlestick



68-5 in. 3 Holder Candlestick



17-9 In. 3 Toed Bowl
17/68-3 pc. Set
Coral or Moonstone—\$7.50 per Set
Crystal—\$6.50 Doz.
A-Rb-Fg-Ame—\$6.50 Doz.



68-5 in 3 Holder Candlestick



60-9 in. Candlestick



40-10½ In. Flower or Fruit Center
40/60-3 pc. Set
Coral or Moonstone—\$10.00 per Set
Crystal—\$7.50 Doz.
Carmen—\$11.90 Doz.
A-Rb-Fg-Ame—\$7.50 Doz.



60-9 in. Candlestick



61-9 in. Candelabrum
w Bobeche & Prisms



40-10½ In. Flower or Fruit Center
40/61-3 pc. Set
Coral or Moonstone—\$15.00 per Set
Crystal—\$13.15 Doz.
Carmen—\$17.50 Doz.
A-Rb-Fg-Ame—\$13.15 Doz.



61-9 in. Candelabrum.
w Bobeche & Prisms

The prices shown represent high retail prices. Write for discounts.

THANKSGIVING TURKEY

by PHYLLIS D. SMITH

With Thanksgiving right around the corner I thought perhaps one more article on the Cambridge Turkey might be appropriate. Several articles related to this bird have appeared in the CRYSTAL BALL and all back issues are available to our members.

Our Turkey Tales began way back in February 1974 (Issue #10), when Charles Upton wrote the very first article, including the information that a "look-alike" Turkey had been seen. This turkey is almost identical to our Cambridge bird; with the most noticeable difference between the two being the "waffle-like" detail on the base of the non-Cambridge item. This is still the best way to tell the difference between this look-alike turkey and the one made by Cambridge. **THERE IS NO WAFFLE DETAIL ON THE CAMBRIDGE BIRD!**

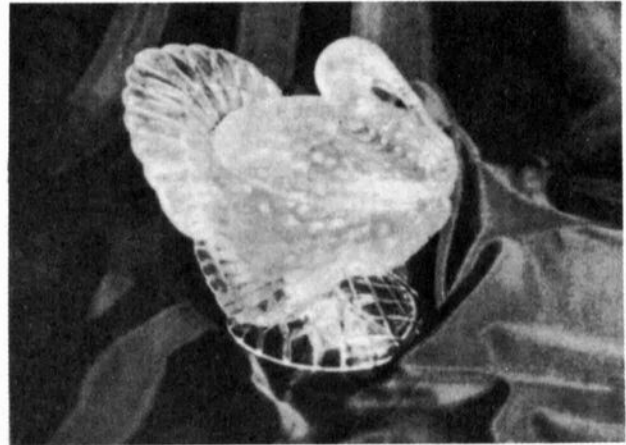


THE #1222 CAMBRIDGE TURKEY

In June 1976 (Issue #38) fellow members Jack and Sue Rettig included in a short article, the information that the Cambridge Turkey was pictured in the December 1930 issue of China, Glass and Lamps. This information gave us an introduction date, and with the reprinting of the 1930-34 Cambridge Catalog by NCC (also in June 1976) this date was further confirmed. While we have no exact records as to how long this bird was produced, it is known that this Turkey mold was added to the WWII scrap iron drive sometime in the very early 1940s, and consequently destroyed. So, at the very most, this Turkey was only in production for ten years.

The December 1976 issue of the CRYSTAL BALL (Issue #44) included yet another article

on our feathered friend, written by Dave Rankin. Along with the "waffle base" information, he gave us the additional news that the L. E. Smith Company produced (and continues to do so) a turkey that is very frequently mistaken for the one made by Cambridge. He included the facts that the "circumference of the bases are 14" for Smith, 17" for Cambridge. Front to back with the lid off (breast to tip of feathers) is 7" for Smith, 9" for Cambridge. The width of the feathers at the widest point is 5 1/2" for Smith and 7" for Cambridge." He also stated that "The opening for the lid on the Smith turkey is level where the Cambridge turkey slopes significantly downward toward the front. If you try to pick up these turkeys with one hand by reaching across the back behind the head, the smallest adult hand can get a firm grip on the Smith turkey, but the largest hand cannot get a firm enough grip to pick up a valuable Cambridge turkey." During the 1978 Convention, speaker



THIS IS NOT A CAMBRIDGE TURKEY!

Dave Rankin conveyed this additional easy way to tell a Cambridge Turkey from the L.E. Smith version. Simply remove it's lid and stick your doubled-up fist into the cavity. A Cambridge turkey will accommodate two fists, with room to spare, according to the size of your fist. The L. E. Smith turkey has room for only one fist, regardless of it's size.

In November 1979 (Issue #79), Doris Issacs wrote that Cambridge did indeed produce our turkey in crystal, as well as other colors. She included a photo of her crystal turkey with a Charleton type decoration. Turkeys have also been found in gold krystal, carmen, amber, royal blue, blue bell, willow and/or moonlight blue. Other colors are possible.

Best Wishes for a very Happy Thanksgiving!

Ray Talbot & Bob Riley

P.O. BOX 4180

SPRINGFIELD, MA 01101

Phone: 413/737-0884 8-11 pm EST

#977 11" Basket, amber.....	\$ 15
#972 11" Plate, amber.....	12
#623 center-hdld. Tray, amber...	10
#3500/57 3-part covered Candy, amber.....	28
#5 7½" ebony Bowl w/gold trim...	15
#2867 7" ebony Candlesticks.....	75
#3400/1177 Dinner Plates (10), light emerald, each.....	12
#509 Two-Kid flower holder, light emerald.....	200
14 panel Bowl, cobalt.....	20
#9 Martha Washington 10" Comport, pink.....	30
10" Honeycomb Bowl, rubina.....	80
#531 7½" Comport, amethyst.....	18
#C165 6" covered Candy, moon- light blue alpine.....	60
#518 8½" Draped Lady, moon- light blue.....	290
#3400 squat Juice Pitcher, forest green.....	28
Mt. Vernon ind. cream & sugar, coral, set.....	50
#SS15 6" ftd. Comport, crown tuscan.....	20
#12 4½" Mt. Vernon ftd. Ivy Ball, mandarin gold.....	32
#38 Comport, jade.....	35
#647 2-lite Candlestick, carmen.	25
Nearcut Thistle Cruets (2) ea...	25
#674 13" Bowl, crystal E/Chintz.	20
#25 8" Everglade Plates, willow blue (7) each.....	30
#3500/109 11" 4-toed Rams Head Bowl, dark emerald.....	180
#9 Mt. Vernon 8" covered Urn, heatherbloom.....	150

THOUGHTS continued from page 1

Thanksgiving is just around the corner. Hope you all have a happy and safe Holiday, and again give "Thanks" for all we have and remember those who are poor and hungry.

Santa Claus will be here before you know it! Once again we suggest you do your Christmas shopping early. To help you, we have again published our N.C.C. Christmas Shopping List (see page 15). This list includes glass items, books, and of course we always encourage you to give N.C.C. memberships to your friends and relatives. This is an excellent way to help your club, and also give a gift that will be appreciated all year long.

Hoping to see you November 7th.

WILLARD

1988 AUCTION

Word from Auction Chairman Lynn Welker confirms that plans are almost complete. The Auction List will be included in your January 1988 issue of the CRYSTAL BALL.

ALL-CAMBRIDGE GLASS AUCTION

Saturday, February 27th, 10:30 AM

Preview 9:30 AM.

Shenandoah Inn, Old Washington, Ohio

Phone: 614/489-5511

February Quarterly Meeting

Friday evening, February 26th at 8 PM

Shenandoah Inn.

An informative meeting will be presented, as well as a preview of the Auction glass. Make your plans now to attend both of these events. Tell a friend about the Auction and be sure to bring your "Show & Tell" glass to the Quarterly meeting.

YOUR MUSEUM

Our Museum will be closed for the season on November 1st. If you did not visit there this year, by all means be sure to include a visit on your schedule for next year. Remember, admission is always FREE to our members.

We will be open again the weekend of our February Quarterly Meeting and Annual All-Cambridge Glass Auction -- February 26 - 28.

N. C. C. CHRISTMAS SHOPPING SUGGESTIONS

Earliest postmarks will determine purchaser in case of insufficient quantities.

BOOKENDS

- #1129 LION, Amber, Second of the Museum Reissue Series.....\$38.00
(Add \$3.00 P. & H. - Ohio residents add \$2.09 tax)
- #1129 LION, Amber Frosted, Special Treatment Item.....\$75.00
(Add \$3.00 P. & H. - Ohio residents add \$4.13 tax)
- #1128 SCOTTY, Black Frosted, Third of the Museum Reissue Series...\$30.00
(Add \$3.00 P. & H. - Ohio residents add \$1.65 tax)
- #1119 EAGLE, Cobalt Blue, Fourth in the Reissue Series.....\$30.00
(Add \$3.00 P. & H. - Ohio residents add \$1.65 tax)

CONVENTION FAVORS

Paperweights

- 1980 - Windsor Blue with Club Logo and Date.....\$16.00
(Add \$1.50 P. & H. - Ohio residents add \$.88 tax)
- 1982 - Gold Krystal with Club Logo and Date.....\$14.00
(Add \$1.50 P. & H. - Ohio residents add \$.77 tax)

Georgian Tumblers, 2½ oz.

- 1983 - Cobalt Blue, Marked "10th Anniversary 1973 N.C.C.-1983"....\$18.00
(Add \$1.50 P. & H. - Ohio residents add \$.99 tax)
- 1984 - Pink, Marked "N. C. C." no date.....\$12.00
(Add \$1.50 P. & H. - Ohio residents add \$.66 tax)
- 1985 - Amber, with Club Logo and Date.....\$14.00
(Add \$1.50 P. & H. - Ohio residents add \$.77 tax)
- 1986 - Gold Krystal, with Club Logo and Date.....\$14.00
(Add \$1.50 P. & H. - Ohio residents add \$.77 tax)

CUP PLATES

- Crystal & Cobalt (limited numbers); Amethyst; Teal.....(ea)...\$7.00
(Add \$1.00 P. & H. - Ohio residents add \$.39 ea. tax)

CAMBRIDGE GLASS COMPANY STOCK CERTIFICATES

- These are original certificates suitable for framing.....(ea)..\$5.00
(Price includes mailing - Ohio residents add \$.28 ea. tax)

BOOKS

See BOOK LIST on page 2 for additional suggestions

National Cambridge Collectors, Inc.
P.O. Box 416
Cambridge, OH 43725



— Classified —

WANTED TO BUY: Stopper for Cambridge Barrel Set. **R. Clarke West**, 3433 Turner Dr., Springfield, OH 45504. Phone: 513/390-3617.

FOR SALE: #3122 Diane etched: 7 1/4" Goblets (11) \$25 ea.; 5" Juices (12) \$20 ea.; Sherbets (8) \$20 ea.; 6 1/4" Underplates (5) \$12 ea. **Barbara Jennings**, 134 Garden Parkway, Henrietta, NY 14467.

BUYING: Moonlight Caprice or Rosepoint by Cambridge; Rose or Orchid by Heisey; and American, June, Fairfax, Versailles, Trojan, etc., by Fostoria. **Nadine Pankow**, 207 South Oakwood, Willow Springs, IL 60480. 312/839-5231.

WANTED: Nearcut Colonial #2750 Helio 7" Candlestick (ref: page 97, Nearcut Reprint by Cambridge Buffs). Also wanted: Community #2800 Helio one gallon Ewer to go with #2800 Basin (ref: #234, page 107, Cambridge Glass Co. Book I by Mary, Lyle & Lynn Welker). **Bill and Pam Earussi**, 889 Stonybrook Lane, Lansdale, PA 19446. 215/855-5423.

FOR SALE: Mandarin Gold Bowl on crystal Nude Stem (8) \$75 each. Crown Tuscan: Flying Lady Bowl \$180; Gadroon Urn \$275. Helio Sweet Pea Vase \$50. "Tomato" Compote \$175. Add shipping. **Allan Boggs**, 76 Glasgow Road, Valencia, PA 16059. 412/444-6039 7 to 11 PM - weekends by chance.

WANTED: #1341 1 oz. Cordials, ebony. #3400/92 2 oz. Tumblers, 1 royal blue, 1 amethyst, 2 carmen. #7801 Stemware 1 oz. Cordials, 5 amethyst, 6 amber, 6 crystal with royal blue foot; 2 oz. Cordials, 6 crystal with amber foot. #1900 1 oz. Tumbler, royal blue. Caprice #188 2 oz. Tumblers. Caprice Vase with Farber Bros. holder. Caprice Doulton Jug with Farber Bros. holder. Any Farber Bros. with Cambridge Glass inserts. Please send me your list with price. I will answer all letters. **JAS**, 144 Tanglewood Drive, Somerville, NJ 08876.

"Forty is the old age of youth; fifty is the youth of old age." **VICTOR HUGO**

Finally!

*a gift as unique
as the person
you buy it for.*



For Christmas, give the glass enthusiasts on your list a year's subscription (6 issues) to *Glass Collector's Digest* for just \$16. In all, they receive 576 pages (96 in color) of entertainment and information. Send check to: *Glass Collector's Digest* Dept. G, P.O. Box 553, Marietta, OH 45750. Or use your charge card by calling 1-800-533-3433 (outside Ohio) or 1-614-373-9959 (in Ohio).

VISA, MasterCard, American Express Accepted.

SPRINGFIELD Antique Show & Flea Market

Clark County Fairgrounds

SPRINGFIELD, OH

Exit 59 on I-70

400-800 DEALERS

INSIDE AND OUTSIDE

Ohio's largest year round show with an
emphasis on quality antiques

9:00 AM - 5:00 PM

Admission \$1.00 per Weekend

Children under 12 FREE

NEXT SHOW

NOV. 14-15 Inside

1987 SHOW DATES

NOV. 14-15 INSIDE
DEC. 12-13 INSIDE

BRUCE KNIGHT, MGR.

For Information Write:
P.O. Box 2429, Springfield, OH 45501
Phone (513) 325-0053

**COLUMBUS ANTIQUE
FLEA MARKET
(ANTIQUES & COLLECTIBLES)**

Ohio State Fairgrounds - Lausche Building
Off I-71 Exit 17th Avenue - Columbus, Ohio

NOVEMBER 8th

Sunday Only - 7 A.M. to 4 P.M.
Show Admission \$1.50 - Under 12 Free
150 QUALITY DEALERS

SELLING Advertising Art Deco, books, Cambridge, clocks, coins, collectibles, Depression glass, dolls, Fiesta, fine early furniture, Heisey, jewelry, lamps, oak furniture, post cards, pottery, good primitives, tools and print shop items.



4214 North High Street, Columbus, Ohio 43214
(614)267-8163 (614)263-6830 (614)885-2352

NEXT SHOW: December 13th

The DAZE

★ SPECIAL OFFER
to NCC friends
\$2. off the 1 year
subscription price,
when on this form
or copy of.

The Original, National monthly newspaper dedicated to the buying, selling & collecting of colored glassware and china including Depression Glass and the Elegant Glass (Cambridge, Heisey, Fostoria etc.) . We educate and inform you each month with feature articles by top notch columnists, readers "finds", club happenings, show news and a multitude of ads. Find those missing pieces to your 30s, 40s or 50s pattern. Can't identify it? Perhaps we can help. "Keep up with what's happening with a subscription to the DAZE. Buy, sell or trade from the convenience of your easy chair.

Name _____ Street _____

City _____ State _____ Zip _____

1 yr.-\$15.00 2 yrs. \$29.00 \$1.75 single current copy
 Check enclosed MasterCard Visa

Exp. date _____ Card No. _____

Signature _____

Orders to D.G.D., Box 57NC, Otisville, MI 48463

Please allow 30 days for your first issue— Canadian subscribers, add \$1. per year and subscribe by charge card only! This Special Offer May Not Be Combined With Other Special Offers

WELCOME TO GLASS COUNTRY!

I-70

STOP AND SEE US

ROUTE 40

WE FEATURE GLASSWARE OF:
CAMBRIDGE, HEISEY, FENTON & FOSTORIA

Plus a full line of Art Pottery and a General line of Quality Antiques

*Stage Coach
Antique Mall*

RT. 40, ONE-HALF MILE WEST OF I-70 NORWICH EXIT #184
MANY DEALERS-WIDE SELECTION-PLENTY PARKING

**DORIS AND ROY ISAACS
BUY AND SELL
814-872-3720**



7525 EAST PIKE
NORWICH, OHIO 43787

MON THRU SAT 10-5:30 SUN 12-5:30
SUMMER EVENING HOURS BY CHANCE

MANY DEALERS - PLENTY OF PARKING

CAMBRIDGE FOR SALE

APPLEBLOSSOM

Gold #3130 goblets (3) 16.00
 Pink #3035 tall sherbets (5) 22.00
 Crys. #3400 cups/saucers (5) 15.00

CAPRICE, CRYSTAL

#300 tall sherbets (10) 10.00
 #300 cordials (5) 22.00
 #170 6½" club dish 22.00
 #92 ind. salt & pepper (pr) 22.00
 #70 candlesticks (pr) 35.00
 #11-5 oz. ftd. tumblers (7) 12.00

CAPRICE, COLORS

#300 Pink tall sherbets (4) 28.00
 #300 Mocha low sherbets (2) 24.00
 #17 Mocha cups/saucers (3) 25.00
 #184 M.Blue Alpine 12oz.tumb(5) 32.00
 #300 M.Blue low sherbets (8) 18.00

CHANTILLY

Ice bucket (Martha blank) 60.00
 10½" vase, sterling foot 50.00
 12" celery 30.00
 Ball salt/pepper, ster. lids(pr) 22.00
 #3625 wines (8) 30.00
 #3779 low stem goblets (5) 15.00
 #103 3 part cov. candy, ster. knob 45.00

DAFFODIL

#3779 low sherbets (5) 18.00

DIANE

#3122 cocktails (8) 18.00
 #3400/67 12" celery/relish 40.00
 Marmalade, sterling lid/foot 40.00
 Bobeches, 2 lock (ea) 22.00

ELAINE

2 pc. shrimp cocktail icers(12) 30.00
 #393 5 part celery/relish 38.00

GLORIA, GOLD KRYSTOL

#3035 wines (7) 25.00

PORTIA

#3400/71 4 ftd. nutcups (8) 25.00
 #1337 cig. holder, ashtray foot 40.00

ROSEPOINT

#3500 low sherbets (6) 15.00
 #3500 12 oz. iced teas (7) 25.00
 #3500 wines (10) 40.00
 #3500 tall sherbets (9) 20.00
 Serving pcs, More: Write

VALENCIA

#3500 low sherbets (6) 10.00
 #3500/71 7½" ctr. h.relish 45.00

WILDLFLOWER

#3121 sherbets, gold trim(6) 14.00
 #3121 goblets, gold trim(3) 18.00
 #3121 tall sherbets (2) 16.00
 #3121 cocktails (3) 18.00
 #3900 cup/saucer 22.00

FIGURALS

Eagle bookends (2) (ea) 50.00
 Dresden figure, milkglass 90.00
 Eagle relish 45.00

FLOWER FIGURES

#518 8½" Draped, Green Satin 85.00
 #518 8½" Draped, Moonlight 235.00
 #518 8½" Draped, Dark Pink 75.00
 #1114 6" Bashful, Green 85.00
 #1114 6" Bashful, Pink 85.00
 #509 Two Kid, Green 150.00
 #513 13" Draped, Pink Satin 200.00
 #1115 11" Bashful, Pink 150.00
 Turtle, Crystal, mint 125.00

NUDES

Ivy Ball, Crown Tuscan 175.00
 Champagnes, Amethyst 100.00
 Champagnes, Forest Green 100.00
 Comport, Carmen (short) 150.00
 Brandies: Green, Amber (ea) 70.00

NEARCUT

Feather tumblers (6) 12.00
 Feather large pitcher 50.00
 Feather cruet & stopper 30.00
 Daisy/Archfoot cruet, stop 40.00
 Daisy/Archfoot comport 35.00
 Daisy/Archfoot decanter 75.00

Cambridge Arms, Candelabra,
 Epergne parts: Write

Cordials, Demi cups/saucers,
 nutcups, small items: Write

All mint. Prices each unless
 noted. UPS extra. Excess ref.

LYNN WELKER

2 E. Main St., New Concord, OH 43762
 614/826-7414 614/826-4418

DEALERS



DIRECTORY

NOTE: When writing to the Dealers listed here, please enclose a SASE!

<p>MILBRA'S MATCHING SERVICE P.O. Box 363, Rio Vista, TX 76093 Milbra Long 817 / 645-6066 FOSTORIA * CAMBRIDGE * HEISEY * DEPRESSION ERA GLASSWARE BUY and SELL</p>	<p>BENICIA ANTIQUE SHOP 305 First Street Benicia, California 94510 OPEN 11 AM - 5 PM Closed Monday Z. E. LOPES 707-745-0978</p>	<p>THE MUTED SWAN ANTIQUES 5486 Peachtree Rd. Chamblee, GA 30341 Heart of Chamblee Antique Row Specializing in Cambridge, Heisey and Fostoria Bill & Pat Miller 404-451-7620</p>
<p>ANDREJCAK'S ANTIQUES 14533 Bayes Ave. Lakewood, Ohio 44107 Joe & Karen Andrejcek 216-226-3417 SHOWS ONLY — CAMBRIDGE — FENTON — CHINA</p>	<p>VISIT HISTORIC BENICIA and its 28 shops Off Interstate #80 North of San Francisco</p>	<p>SPECIALIZE IN CAMBRIDGE GLASS & ANTIQUES DOYLE L. BYINGTON 553 Sanchez Street, San Fransisco, CA 94114 415/621-1854 Shows: Mail-Order - Buy & Sell - By Appointment</p>
<p>BOGART'S ANTIQUES Stagecoach Mall, Building #2 Norwich, OH 43767 ***** Jack and Sharon Bogart 614/826-7439 and 614/872-3514 ***** BUY - SELL - APPRAISE - REFINISH SEAT WEAVING - CLOCK REPAIR COPPER & BRASS POLISHING GENERAL LINE CAMBRIDGE GLASS</p>	<p>ANTIQUES ON THE MALL SPECIALIZING IN CAMBRIDGE GLASS Stagecoach Mall - Bldg. 3 - Norwich, OH Virginia Bennett 614/432-4483 64183 Warne Drive, Cambridge, OH 43725</p>	<p>BERKELEY ANTIQUES 69 Berkeley St., Boston, MA 02116 OPEN: Monday thru Saturday 11 AM to 5 PM GEORGE & FRANK 617/426-1048 DUNCAN, CAMBRIDGE, HEISEY, GENERAL LINE</p>
	<p>D & D ANTIQUES Columbus, Ohio DICK SLIFKO SHOWS ONLY</p>	<p>YOU CAN ADVERTISE YOUR ANTIQUe SHOP HERE!</p>
<p>THE GLASS CUPBOARD 39 Shire Oaks Drive Pittsford, New York 14534 Marcia Ellis Cambridge, Duncan Miller (716) 586-7596 Shows, Mail Order, Appt.</p>	<p>JUDY'S ANTIQUES Judy Bennett 422 S. Ninth Street (Corner of Jefferson) Cambridge, Ohio 43725 BUYING Ph. 614-432-5855 SELLING <i>Cambridge Glass my Specialty</i></p>	<p>"Happiness Is" - The Stultzs 3106 Warren Court, Glen Allen, VA 23060 Shows and Mail (Richmond Area) 804/262-1273 GLASS CIRCA 1890-1960</p>
<p>PEG AND DALE GOTSCHALL Antiques, Cambridge and Other Quality Glass 833 N. 6th St., Cambridge, Ohio 43725 Phone 614/432-5529 Stagecoach Mall — Bldg. 2 — Norwich, Ohio</p>	<p>GREEN ACRES FARM 2678 Hazelton Etna Rd., Pataskala, OH 43062 (State Route 310 North) Sat. & Sun. 1-7 PM 614/927-1882 Antiques, Crystal Glass and Collectibles</p>	<p>MOSTLY HEISEY 16 Clayton Place, Albany, NY 12209 Rhoda Curley 518 / 482-6272 SHOP and MAIL ORDER</p>
<p>THE HITCHING POST 7467 S. R. 88 Ravenna, OH 44266 Ph. 216-296-3686 D. McDaniel CAMBRIDGE — HEISEY — GENERAL LINE</p>	<p>BUY-SELL 513/390-3617 <i>Taste of Honey</i> Glassware—Collectibles CLARKE & CAROLE WEST 3433 Turner Dr. Springfield, OH 45504</p>	<p>1886 HOUSE East Schodack, N.Y. 12063 MAIL and SHOWS Laurie Cruise 518-477-5895 CAMBRIDGE - NORITAKE - AZALEA - D.G.</p>
<p>L & M ANTIQUES 1331 S.E. 4th Ave., Pompano Beach, FL 33060 Lydia & Cliff McNeil 305/943-2274 CAMBRIDGE & FOSTORIA OUR SPECIALTY Buy & Sell Shows Only</p>	<p>REMEMBRANCES 7597 Daphne Dr., No. Syracuse, NY 13212 Shirley S. Ladouceur 315 / 458-5297 ANTIQUES and COLLECTIBLES MAIL ORDER SHOWS APPOINTMENTS</p>	<p>MARGARET LANE ANTIQUES 2 E. Main St., New Concord, OH 43762 Lynn Welker 614/826-4418 CAMBRIDGE GLASS MATCHING SERVICE Hours Mon.-Fri. 1-5 PM or by Appointment</p>
<p>THE GLASS URN 456 West Main Street, Suite G. Mesa, AZ 85201 602 / 833-2702 Mail Order Shows Open Shop CAMBRIDGE, FOSTORIA, HEISEY, ETC.</p>	<p>AL STEELE Westerville, Ohio 614-882-6483 or 614-882-7124 Mail Orders and Shows Only HEISEY — CAMBRIDGE — PATTERN GLASS</p>	<p>BUD'S TRADING POST GENERAL STORE — FLEA MARKET 501 Wheeling Ave. Cambridge, OH 43725 10-5 Mon. thru Sat. 614-432-4688 CAMBRIDGE - PATTERN - ART GLASS This Bud's for Y'all</p>



National Cambridge Collectors, Inc.

P O Box 416 Cambridge, Ohio 43725

A nonprofit organization dedicated to the preservation and study of Cambridge Glass

You Are Cordially Invited To Become A Member Of The

NATIONAL CAMBRIDGE COLLECTORS, INC.

Benefits derived from membership include receipt of our club publication, The Cambridge CRYSTAL BALL; informative Quarterly Meetings; Antique Shows Auctions; and other special events.

The CambridgeCRYSTAL BALL is published the first of each month. This newsletter contains educational and interesting articles, questions and answers, information on reproductions and reissues, notices of all club functions, classified advertisements, dealers directory, and many other features of interest to collectors of Cambridge Glass.

Yearly dues are \$13.00 for Individual Members and \$3.00 for each Associate Member. All members have voting rights, but only one issue of the CRYSTAL BALL will be mailed per household

Name (please print) _____ \$13.00

Mailing Address _____

City _____ State _____ Zip _____

Associate Members: (Must be at least 12 years of age and living in the same household.)

1. Name _____

2. Name _____

3. Name _____

Total number of Associate Members _____ @ \$3.00 each \$ _____

TOTAL AMOUNT ENCLOSED: \$ _____

Please make check payable to: NATIONAL CAMBRIDGE COLLECTORS, INC.

Recommended by _____

A "GIFT of MEMBERSHIP in N.C.C." is a gift that is sure to be appreciated every month, all year long. Send us your list, and we'll send a card in your name to reach everyone in time for Christmas!

Radium.

No 2626.



Butter and Cover.

SEE INSIDE FOR

CAMBRIDGE BUTTERS - pages 3 thru 6 article by Mark Nye

SEA SHELL - pages 7 thru 12 catalog pages

CAMBRIDGE TURKEY - page 13 article by Phyllis Smith

HAPPY THANKSGIVING

National Cambridge Collectors, Inc. P. O. Box 416 Cambridge, Ohio 43725

FIRST-CLASS MAIL U.S. POSTAGE PAID So. Vienna, Ohio 45369 Permit No. 15

FIRST CLASS MAIL

