



Cambridge Crystal Ball

Published monthly by the National Cambridge Collectors, Inc.
to encourage and report the discovery of the elegant and boundless product
of the Cambridge Glass Company of Cambridge, Ohio

Issue No. 174

October 1987

THOUGHTS FROM YOUR PRESIDENT

I indicated in the last issue of the CRYSTAL BALL that I thought seven years was too long for one person to be serving as president of N.C.C., for various reasons. That opinion still holds, however, delete the seven years and make that eight years! According to the minutes (which I had to go back and check), I was elected in June 1980. Just shows you what happens to your mind when you grow old.

I can assure you that I would not have accepted the presidency for eight years had it not been for the fact that the other officers and members of the Board of Directors work so closely with me. Jan (Hughes) has been secretary forever (beginning her thirteenth year); and Bill (Smith) is beginning his eighth year as treasurer, having served as president for five years prior to that. Also, the committee chairmen have always accepted their responsibilities and have done exceptional work. But, the dedicated membership itself is the real hero of the N.C.C. success story.

I think that I have succeeded in getting all of my "thank you" letters written to the members who have donated items or monies to N.C.C. so far this year. (I'll keep writing if you keep sending!) If I have failed to recognize anyone, let me know by dropping me a line. You'll need the letter for your income tax returns.

Membership Renewal Notice

This is your **last** issue of the *Crystal Ball*—if the date on your address label reads **10-87**.

Please renew now!

Some of you may have received letters where all of the 5's were written in ink. Would you believe, I had about twenty letters to go and the pivot pin fell out of my 5 key on the typewriter. After spending about an hour looking for the little devil and then trying to figure out how to fix it without the pivot pin, I decided to write in what few 5's I would have rather than wait until I could get someone to fix it. (Has to be torn completely apart, I guess.) I think that everyone's street address or zip code, in these last twenty letters, had at least one 5 and some as many as four. No wonder the 5 key wore out! It's probably the most used of the number keys. By the way Phyllis, you have two 5's in your zip code and I don't have the typewriter fixed yet -- Guess What?

(EDITOR'S NOTE: A few days after receiving this article from Willard, we received another note from him which read in part, "Fixed my 5 key on the typewriter. Tied a string to the 5 arm, ran it through a pulley on the carriage and then down to the floor to a foot pedal. When I need a 5 I just hold down the 5 key and push the pedal on the floor. What do you mean it won't work?" Now, that's what I call real "genius!" Is it any wonder that your Board of Directors have seen fit to elect this man to serve as your President for eight consecutive terms?)

Representatives from all of the National Glass Clubs will be meeting on **October 11th at our Museum**. N.C.C. is the host club for this meeting. I hope it will be well attended, as

continued on page 8

Cambridge Crystal Ball

Official publication of National Cambridge Collectors, Inc., a non-profit corporation with tax exempt status. Published once a month for the benefit of its members.

Membership is available for individual members at \$13 per year and additional members (12 years of age and residing in household) at \$3 each. All members have voting rights, but only one *Crystal Ball* will be mailed per household.

Back issues of the *Crystal Ball* are available (beginning with Issue No. 1, May 1973) for members only. Cost: 60 cents each or 12 issues for \$7.

1986-87 Officers & Committee Chairpersons

President	Willard P. Kolb
Vice-President	Mark A. Nye
Secretary	Janice Y. Hughes
Treasurer	William C. Smith
Sergeant-at-Arms	Marybelle Moorehead
Budget & Finance	David B. Rankin
By-Laws	Ekkehart A. Vimmer
Convention	Mark A. Nye
Membership	Phyllis D. Smith
Museum	Billy F. Harbaugh
Program & Entertainment	Marlene K. Snyder
Project	Willard P. Kolb
Public Relations	William C. & Phyllis D. Smith
Publicity	Joseph Andrejcek
Study Group Advisor	Phyllis D. Smith
1987 Auction	Lynn M. Welker
1987 Antique Show	Joy R. McFadden
1987 Flea Market	Marybelle Moorehead
Crystal Ball Editor	Phyllis D. Smith

Classified Advertising Rates

5 cents per word \$1.00 minimum

We cannot mix type size in classified advertisements. Abbreviations and initials will count as words. Payment in full must accompany all ads.

Display Advertising Rates

(Camera-ready ads preferred)	Members	Non-Members
1/8 page (9 items)	\$ 4.00	\$ 6.00
1/4 page (20 items)	7.00	10.00
1/2 page (20 items)	12.00	18.00
3/4 page	17.00	25.00
Full page (50 items)	22.00	33.00

Dealers Directory

Five-line maximum \$12.00 for 12 months

Cambridge *Crystal Ball* assumes no responsibility for items advertised and will not be responsible for errors in price, description or other information.

Advertising copy, articles, club news and notices must be in our hands by the 10th of each month to assure publication in our next issue.

Paid advertisements containing reproductions or new glass will not knowingly be accepted for publication.

Opinions or information stated in any signed article or letter printed in the *Crystal Ball* are those of the authors and may or may not agree with National Cambridge Collectors, Inc. The Editor reserves the right to refuse and to edit any material submitted for publication so as to conform with the editorial style of the *Crystal Ball*.

Please Address All Correspondence to:

National Cambridge Collectors, Inc.
 P.O. Box 416 Cambridge, Ohio 43725
President — Willard Kolb, 614/695-0695
Secretary — Janice Hughes, 614/432-7823
Editor — Phyllis Smith, 513/323-3888

NCC Museum of Cambridge Glass is located on U.S. Route 40, one-eighth mile east of I-77 near Cambridge. Hours: 12 noon to 4 p.m., Wednesday through Sunday (March through October). Closed Easter and July 4th.

Please notify us immediately of any change in your address.

Please enclose an SASE when requesting information.

CAMBRIDGE GLASS BOOKS FOR SALE

by National Cambridge Collectors, Inc.

- * **COLORS IN CAMBRIDGE GLASS**
 (128 pages - 60 color plates - fully indexed)
 Hardbound with Price Guide \$19.95
- * **1930-34 CAMBRIDGE GLASS CO. CATALOG REPRINT**
 (250 page reprint of original catalog)
 Hardbound with Price Guide \$14.95
- * **1949-53 CAMBRIDGE GLASS CO. CATALOG REPRINT**
 (300 page reprint of original catalog)
 Hardbound with Price Guide \$14.95
- * **1956-58 CAMBRIDGE GLASS CO. CATALOG REPRINT**
 (164 page reprint of original catalog)
 Paperback \$6.95

1985 COMBINED PRICE GUIDE

for 1930-34 & 1949-53 catalog reprints Postpaid \$5.75

*NCC MEMBERS ONLY: These publications are available at 10% discount - or all four (4) at one time for \$50.00.

by Bill & Phyllis Smith

- CAMBRIDGE GLASS 1927-1929**
 (66 page reprint of original catalog)
 Paperback with Identification Guide \$7.95

by Mark Nye

- CAMBRIDGE STEMWARE**
 (95 Stemware lines with 107 illustrations)
 Paperback \$14.95

by Cambridge Buffs Study Group

- NEARCUT**
 (108 page reprint of 1910 Cambridge Catalog)
 Paperback with Price Guide \$9.95

by Mary, Lyle and Lynn Welker

- CAMBRIDGE GLASS CO.**
 (120 pages of reprint from 8 old catalogs)
 Paperback \$6.95

- CAMBRIDGE GLASS CO. BOOK II**
 (119 pages of reprint from old catalogs)
 Paperback \$6.95

- CAMBRIDGE, OHIO GLASS IN COLOR II**
 Spiralbound \$5.95

by Harold and Judy Bennett

- 1903 CAMBRIDGE GLASS CO. CATALOG REPRINT**
 (106 page reprint of an original catalog)
 Paperback \$7.50

Address your orders to:

BOOKS
 National Cambridge Collectors, Inc.
 P.O. Box 416
 Cambridge, OH 43725

Please add \$1.00 (P & I) per order.

(Not required for Price Guide)

Ohio residents please add 6% state sales tax.

DEALER DISCOUNTS AVAILABLE - PLEASE WRITE!

Is NCC An Ohio Club ?

by WILLARD KOLB

As it was explained to me, this idea of N.C.C. being an "Ohio Club" was mentioned because we do not hold any of our Quarterly meetings out of state, in areas where there are large concentrations of N.C.C. members. In other words, the suggestion was being made that we hold at least one meeting a year somewhere other than Cambridge. I can see the point in this, and I know if I lived hundreds of miles away I would probably feel slighted in that I wouldn't be able to attend the meetings.

I've checked with other clubs to see what their procedure was for this, and find that none of them have ever been faced with this problem. I understand, however, that the National Depression Glass Assoc. does hold meetings and their convention in various areas of the country.

We discussed this idea at some length at the last Directors meeting and decided not to change locations, at least not in the near future. Instead, we would encourage out of state groups, such as Study Groups, those who are a part of other shows and conventions, to invite Board members to be guests or speakers. We will not always be able to accommodate, but are willing to make an effort.

Let me touch on some other things that perhaps makes this seem like an "Ohio Group" to some of you. The Board of Directors consists mainly of persons from the state of Ohio, with the exception of Mark Nye who is from Florida. We don't wish it to be this way, but that is how it turns out each year when we are looking for volunteers to serve on the Board. The Nomination committee has a very difficult time each year coming up with enough people to fill the slate.

For years the Board met twelve times a year which made it difficult for out of state members to serve on the Board and attend the necessary ten meetings a year to keep their position. We changed that several years ago to where we only hold five or six meeting a year, thus encouraging out of state members to seek a position on the Board. So far we have only had two takers: Mark Nye and Tony Vimmer. Tony's term ended this year and he did not wish to run again.

Anyone, anywhere, who wishes to serve on the Board of Directors need only contact Bill Smith, chairman of the Nominating committee, and give him your name. If you know of someone you would like to see on the Board, get their consent and then submit their name. You must have their consent according to the By-laws. We would certainly welcome anyone, who is willing to serve, to the Board.

There is also the feeling that the local Ohio members congregate during the Convention. Not true -- at least not intentionally. We have encouraged the local members to mix with all other members during these activities, and they have done so. We encourage out of state members to visit the rooms of our officers after the evening activities and join in the conversations. This year we had a very good response to this effort.

We are all members of the same organization and I don't think this kind of feeling should prevail. We certainly do not encourage it!

QUARTERLY MEETING

SATURDAY, NOVEMBER 7, 1987

at

"THE UPSTAIRS"

(next door to Coney Island)

632 Wheeling Ave., Cambridge, Ohio

Cocktails beginning at 6 PM (Pay Bar)

Dinner - Pre-ordered Sit Down Meal at 7 PM

Business Meeting at 8 PM

Program (To Follow Meeting)

Program and Entertainment Chairman Marlene Snyder has announced that Dave Adair from Cambridge, Ohio, will be speaker during the November Quarterly meeting.

Mr. Adair is a member of the Guernsey County Historical Society and his topic will be "Railroads and Coal Mines of Guernsey County." His talk will include a slide presentation and should prove interesting.

Be sure to return the Reservation Form that is included in this issue. Deadline for its return is November 2nd.

Friends...they cherish each other's hopes.

They are kind to each other's dreams.

Thoreau

Don't be fooled

by PHYLLIS D. SMITH

In recent months we have had several reports of sightings and purchases of the Caprice Candy box and cover in unusual and even thought to be "rare" Cambridge colors. Colors listed have been bluebell, carmen, mandarin gold, and a green that seems to have a brownish tint to it.

PLEASE, DON'T BE FOOLED! These Caprice candy boxes were NOT produced by Cambridge. They were, instead made by the Imperial Glass Company of Bellaire, Ohio, sometime during the middle 1970s. Of course, the original Cambridge mold was used, but the colors are strictly by Imperial. Their color names were: Antique Blue (similar to bluebell); Sunshine Yellow (more brown tint to the yellow than the Cambridge mandarin gold); Verde (Cambridge never made a green close to this color); and Ruby (similar to carmen).

They also produced this candy box and several other pieces of Caprice in their Moonlight Blue color. Their Moonlight is so similar to the moonlight blue that Cambridge produced that only under a black light can you tell the difference and even then it is difficult.

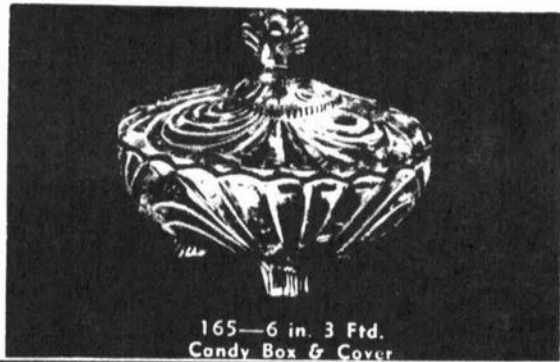
As we all know, Imperial is now out of business, and everything they made is now quite collectible. This article is intended only to inform you, and is in no way trying to imply that you should not purchase these candy boxes, should the opportunity arise.

Just be aware and informed, and then if you want to add any or all of these Imperial colors to your collection -- good for you!

1988 AUCTION

Saturday, FEBRUARY 27, 1988
THE SHENANDOAH INN
Old Washington, Ohio

If you have not as yet made contact with Auction Chairman Lynn Welker concerning any glass you wish to consign or donation to our All-Cambridge Glass Auction, please do so just as quickly as possible. Send your inquiries to: **Lynn Welker, 2 E. Main St., New Concord, OH 43762.** Or phone him at: 614/826-4418.



Clean-up Efforts Continue

We haven't written anything for several months concerning the effort being made to clean up the etching plates, molds, and various other pieces of equipment acquired from the Imperial liquidation. However, such efforts are continuing and we thought you might like to know about them.

During this past year, Harold and Marlene Snyder worked at cleaning and painting a small press, two blowers dummy's, and the gauge rack. They took these to their home in Marshallville, Ohio, and worked on them, and then returned them to the service building.

Mark Nye, Miami, Florida; Cindy Arent, Cambridge; Willard Kolb, St. Clairsville; and D.D. Rummel, Bellville; all met at the service building in July and inventoried quiet a number (5 boxes) of stem molds.

Since Convention, Cindy Arent, Judy Momirov, J.D. and Doyle Hanes, all of Cambridge, have worked in the service building to list and inventory the gauges. Mike Arent has provided a computer printout of this information.

Bill Smith and Clark West, both of Springfield, Ohio, have been working at the Smith house this past year, cleaning, recording and preserving the etching plates. They have finished approximately 700 to 750. Several large books containing the prints from these plates are now in the Museum for our members to study.

There is much work still to be done. Anyone who could or would like to offer their help in any way, please do so. Your help would be very much appreciated. Contact Willard Kolb, Bill Smith, or any of the Board members, or just write to the Club address and word will be passed along.



ETCHINGS

A SYNOPSIS

PART II

by MARK A. NYE

The etchings discussed this month will be found either in the 1930-34 Catalog Reprint or in the 1949-53 Catalog Reprint.



6 oz. Low Sherbet

2 oz. Sherry
(7966)

VICHY: Shown in the 1934 Cambridge catalog supplement on #3129 stemware. Vichy was discontinued prior to 1940 only to be revived during the early 1950s for use on a barware line. Not often seen today, Vichy or etching #765 was probably used only on crystal blanks. One distinction about Vichy is that it was one of the few etchings to be used on the #3011 or Nude stemware line.



652. 12 in. Celery

CHINTZ: Another etching from the mid 1930s that was discontinued before 1940. Chintz or #766 apparently never achieved a great popularity as little is seen today. While there are occasional pieces and stemware etched Chintz, a complete dinnerware set is unlikely and production in color although not unknown, was probably less than that done on crystal blanks.

ELAINE: The Elaine or #762 etching was, at one time, available on more blanks than Rosepoint, but its popularity was eventually



1402/150
3 oz. Wine

surpassed by the latter etching. Brought out in 1933 and in the Cambridge catalog until 1954, there are at least six lines of Elaine etched stemware and three of dinnerware. Primarily placed onto crystal blanks, Elaine will be found with a gold edge and gold encrusted in addition to plain etched crystal blanks. On rare occasions, an Elaine etched colored blank will be found.



10 oz. Tumbler
E: Minerva



Low Sherbet
E: Valencia

MINERVA & VALENCIA: Minerva #763, and Valencia #761, were added to the Cambridge line in 1933 and remained available thru 1939. Despite the fact relatively few pieces of these etchings are seen today, both were placed on complete stemware and dinnerware lines, #3400, Gadroon and Tally-Ho. Production of these etchings on colored blanks was limited and such pieces are seen even less frequently than crystal pieces. Minerva and Valencia were gold encrusted as well as being available plain and plain with a gold edge.



Finger Bowl and Plate

MARLENE: A seldom seen etching from the mid 1930s. Marlene appears to have had a short production run. Shown in a 1934 catalog

continued on next page

ETCHINGS continued from page 5

supplement on stemware and a finger bowl, Marlene, also known as #767, remains an obscure etching, unseen by most collectors.



3900/41
Sugar & Cream

ROSEPOINT: Rosepoint, the premier Cambridge etching, was introduced to the trade in November 1934 and continued to be sold until the demise of the Company. Imperial attempted to produce Rosepoint and for awhile during the 1960s did offer a short line; however, it was not successful and was soon dropped from the Imperial catalog. The quality of the Imperial produced Rosepoint was not equal to that of the original and can be distinguished by its lack of depth. Produced in full lines of dinnerware and stemware, Rosepoint, due to its great popularity, was probably placed on more blanks than any other Cambridge etching and most any item produced by Cambridge after 1935 may have been etched Rosepoint. Rosepoint, while primarily placed on crystal blanks and then sold plain, or further decorated with gold, was done to a limited extent on colored blanks. Pieces are known in carmen, amber and ebony gold encrusted.



3111
5 oz. Ftd. Tumbler

CANDLELIGHT: After its introduction circa 1936, Candlelight continued to be offered by Cambridge until 1952-53. While there are three stemware lines etched Candlelight, apparently there is not a complete Candlelight dinnerware set since a dinner plate is not

known. Not available in the transparent colors, Candlelight will be found plain, gold encrusted or with a gold edge on crystal blanks and to a limited extent, gold encrusted on Crown Tuscan.



3900/130
7 in. 2 handled Ftd. Bonbon

WILDFLOWER: Brought out in 1938, Wildflower was one of the three major etchings, the other two being Chantilly and Rosepoint. Still in production when the factory closed for the last time, Wildflower or etching #773 as it is also known, was used on the two dinnerware lines, #3400 and #3900, and three stemware lines, #3121, #3725 and Pristine. However, most of the Wildflower stemware found today is from the #3121 line and it appears very little Pristine and #3725 were decorated with this etching. While primarily found on crystal blanks, pieces in gold krystal, etched Wildflower are known. Wildflower, like many of the previous etchings, was done plain, gold encrusted and with a gold edge. This etching is somewhat similar to an infrequently seen earlier design and one that is on occasion, referred to as "early Wildflower." However, there should be little confusion between the two patterns since the blanks used for the early etching will clearly identify it.

THANKS!

Special "thanks" go to all our advertisers this month. Please be sure to read their ads and order from them where possible. It would be nice to have this kind of advertising every month.

It is hard to realize, but Christmas is just around the corner! Now is the time to send in those gift orders of membership in N.C.C. We will be most happy to send a greeting card with your name, and telling about your gift. Cambridge books also make nice gifts. Get your orders in early.

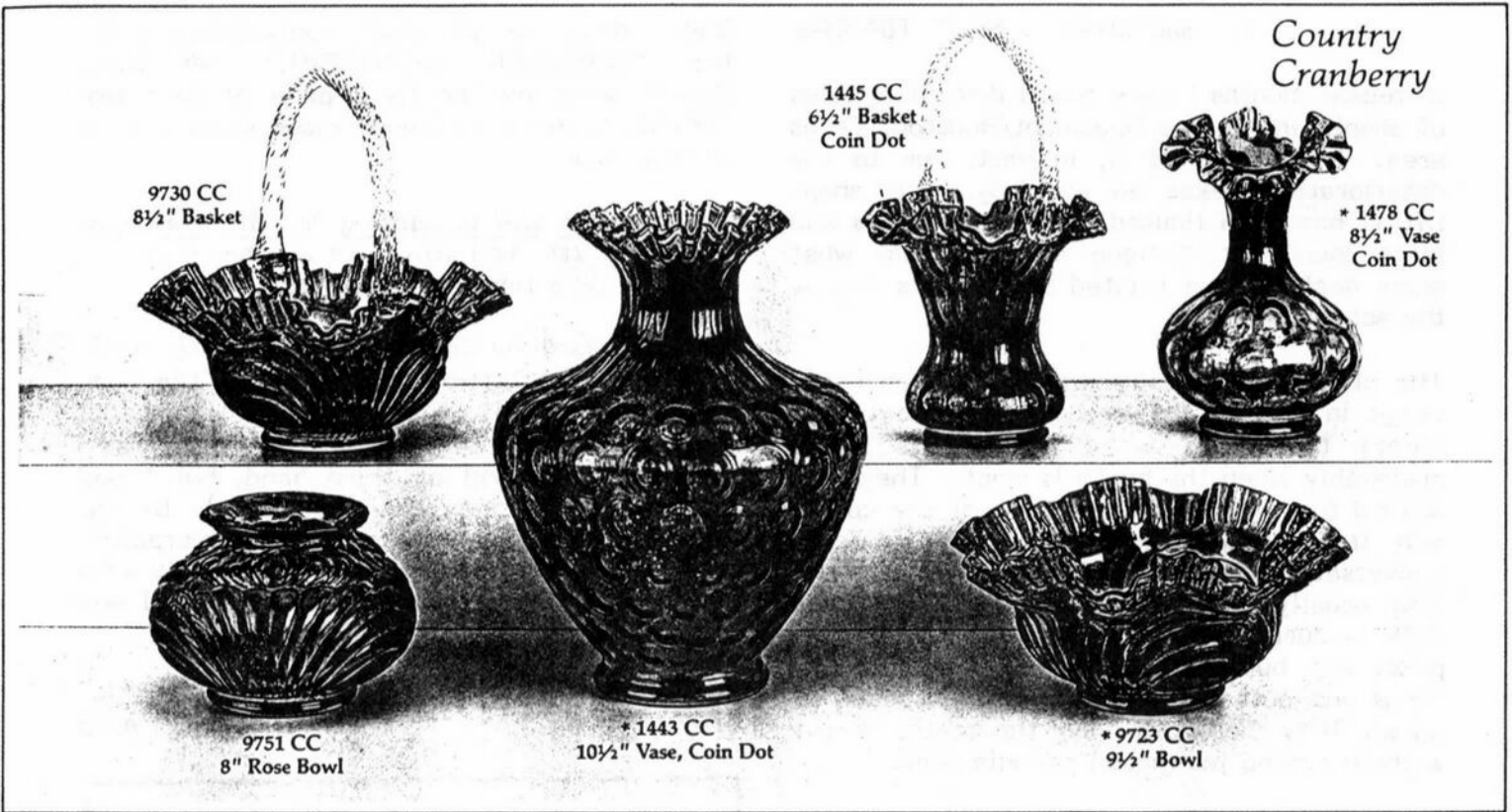


F E N T O N

0280 AS
9 Pc. Country Cranberry
Assortment

Includes the 9 items with
an * next to them.

Country Cranberry—all new
for 1987. This spectacular color
is achieved through great skill
and glassmaking technology.
Handmade in the U.S.A. to
make a top category even better.



Fenton is now using some of the original Cambridge molds in making vases, etc. This information comes to us from several sources. The Welkers provided the Fenton Catalog for xeroxing, Charles Upton sent us the photo of the Shell Flower Holder, and Frank Fenton gave us permission to use these photo's from the Fenton catalog. We thank all concerned.

Country Cranberry—See pages 24 and 25 in general catalog for other CC items.
(order blank—page 2, columns 1 & 2)



The Caprice vase molds are being used to produce several different shapes, such as the pitcher, baskets, rose bowl, etc. All are being made in the Country Cranberry color. Note also the Daffodil Everglade vase. The #46 Shell Flower Holder (note how the top is finished) is being made in their new Peaches & Cream color. This is one of their Ice Cream colors. All pieces are lovely and present no problem for Cambridge collectors as Cambridge never produced Caprice or the Shell line in either of these colors. Frank Fenton assures us that each piece IS MARKED! The mark does not show well on these blown items, but they are working to correct that.

Along the Flea Market Trail

Shoplifters are busy in Texas!

submitted by MIKE TIPPENS

In recent months I have heard disturbing tales of shoplifting in the Beaumont/Houston, Texas area. I believe this is, in part, due to the deteriorating Texas oil economy. The shoplifting has been limited to Antique Malls and large individual Antique shops. From what many dealers have related to me, this is how the scheme works.

The shoplifters usually work in a team and range in age to the early 30's. The couple enters the booth when business is slack, preferably when the booth is empty. They look around for a few minutes. One of the couple will then proceed to get into an in-depth conversation about a particular piece of glass. This usually lures the owner away from the desk -- during this time the second shoplifter picks out butter dishes and other desirable items and puts them into a large handbag or purse. They then both leave the booth, usually without having purchased a single item.

They are usually after Depression glass, which is in part due to the lack of Cambridge glass in this area.

After they have gotten quite a few pieces of glass from the Antique Mall, they head over to a different Antique Mall and proceed with a tale of lost jobs, no food to eat, etc. The glass usually still has the previous dealers tag on it. The person then asks for a very low price for the items.

The most prevalent item taken is the butter dish, for which they usually get \$15 to \$20. Imagine a Rosepoint butter selling for that!

The owners of the Antique Mall, and the dealers themselves, have countered this by having two people in each booth and by warning local dealers of what the shoplifters look like. It is known that it is not the same group doing the stealing all the time. This seems to have stopped 90% of the thefts.

I know I would be awfully upset if someone took one of my prize pieces of Cambridge Glass!

THOUGHTS continued from page 1

as usual. This has been very helpful to most of the clubs and I hope it continues.

Don't forget to get your reservations in for the **NOVEMBER QUARTERLY MEETING**. Details were on the back page of your last CRYSTAL BALL and your reservation form is in this issue.

The Museum will be closing for the season on November 1st. You still have another month to visit, so take time out to do so.

As I promised you in the last CRYSTAL BALL I will write an article responding to the comment that this is an "Ohio Club." I am not sure what was meant by this comment, as I received it second or third hand, but I will respond to the explanation given me by the second party. I was asked not to incorporate this comment or discussion in my monthly article, but to write a separate one. This I will do, and you will find it elsewhere in this C.B.

See you all at the November Quarterly.

WILLARD

Cambridge Connection

197-49 Wickshire Lane

Jasper, TX 75951

MIKE TIPPENS - Phone 409/384-5956

#702 mini Cornucopia, C.T.....	\$ 13.00
Rubina 8" fancy stem Compote...	75.00
#1263 etched Oil & Vinegar.....	12.00
Milk glass Cream w/brass Farberware base.....	15.00
#1337 Cigarette Holder w/ash- tray foot, amethyst.....	20.00
#693/3000 2-piece Canape Set frosted w/red enamel trim & Hunt Scene on glass.....	25.00
Carmen Nude Compote.....	95.00
10" bud Vase, E Wildflower.....	15.00
Footed Ashtray, amber.....	35.00

JOHN & LENORA McNABB

9730 N. Lydia Avenue Kansas City, MO 64155
(816) 734-2373

#3011 NUDE STEMS

Cocktail, carmen.....	\$ 90.00
Claret, carmen (2).....	90.00
Cupped Comport, carmen.....	120.00
Cocktail optic, crystal (3).....	70.00
Ivy Ball optic, crystal.....	90.00
Flying Lady Bowl, crystal.....	125.00
Flying Lady Bowl, crown tuscan...	140.00
SS/11 7" Comport, crown tuscan...	130.00
SS/10 5" Comport, decorated crown tuscan.....	100.00
Cocktail, green (2).....	70.00
Cocktail, crystal bowl w/ebony stem - guaranteed Cambridge..	55.00

CAPRICE VASES

#341 crystal, ruffled top.....	\$ 35.00
#341 amber, ground top.....	45.00
#341 green, ground top.....	45.00
#342 amethyst, ground top.....	65.00
W124 4½" milk glass.....	50.00

CAPRICE - LA ROSA

#300 9 oz. Goblets (12).....	\$ 35.00
#300 6 oz. tall Sherbets (9).....	30.00

CAPRICE - PISTACHIO

#22 8½" Salad Plates (2).....	\$ 15.00
-------------------------------	----------

CAPRICE - MOONLIGHT BLUE

#89 Marmalade w/o lid.....	\$ 60.00
----------------------------	----------

CAPRICE - CRYSTAL

#3 Cocktails (6).....	\$ 12.00
#11 5 oz. ftd. Tumblers (6).....	14.00
#183 80 oz. Ball Jug.....	60.00
#87 Mustard.....	55.00
#92 ind. Salt & Pepper, pair.....	20.00
#115 Diamond Relish.....	25.00
#125 12" 3-compartment Relish....	50.00
#165 covered Candy.....	30.00

CAPRICE - CRYSTAL ALPINE

#136 7" Comport.....	\$ 25.00
#122 3-compartment Relish.....	25.00
#147 4" BonBon.....	15.00
#120 2-part Relish.....	15.00
#40 ind. Sugar & Cream, pair.....	25.00
#201 Ice Bucket.....	45.00

Have Caprice #300 crystal Parfaits
will trade for #300 4½ oz. Clarets.

MISCELLANEOUS CAMBRIDGE

#15 6" Cupped Comport, windsor blue, signed.....	\$ 85.00
---	----------

#3500/45 10" ftd. Vase, green....	55.00
#3500/45 10" Vase, moonstone....	60.00
#3500/41 10" Urn w/o lid, carmen.	40.00

#1236 Ivy Ball, amber.....	27.00
#1236 Ivy Ball, mandarin gold....	27.00
#1236 Ivy Ball, royal blue.....	35.00
#1236 Ivy Ball, amethyst.....	27.00
#1236 Ivy Ball, carmen.....	35.00
#1236 Ivy Ball, emerald green....	27.00
#1236 Ivy Ball, crystal.....	27.00

#1066 Ivy Ball, carmen.....	40.00
#1066 Ivy Ball, amethyst.....	27.00

1237 9" keyhole Vase, carmen.....	35.00
-----------------------------------	-------

#3500/90 Cigarette holder with ashtray foot, amber.....	50.00
--	-------

#3500/90 Cigarette holder with ashtray foot, carmen.....	55.00
---	-------

#1321 28 oz. Decanter w/3½ oz. Farberware Cocktails (6), amethyst.....	60.00
--	-------

#1321 28 oz. Decanter w/2 oz. sherries (6), amber.....	60.00
---	-------

ALL ITEMS MINT and PRICED EACH

UPS and Insurance EXTRA

NADINE PANKOW

207 S. Oakwood
Willow Springs, IL 60480
312 / 839-5231

CAMBRIDGE - Miscellaneous

3-pc. Mayo set, royal blue w/gold.\$ 75.00
#973 5½" Beverage Tray, pink..... 14.50
#3121 7" Compote amethyst/crystal. 29.50
"Scotch" decanter w/stopper..... 85.00
"Scotch" pump gone..... 20.00
"Bourbon" pump gone..... 25.00
Vase 10" keyhole, amber..... 19.50
Stackaway Ashtray set..... 42.50
Blue Jay flower frog, crystal..... 65.00
1974 NCC Collector plate, blue.... 29.50

LIQUOR SETS

Amethyst Pinch decanter & 12
barrel shots.....\$ 85.00
Amber Keg Set, open barrel,
rack, tray & 2 tumblers..... 95.00
Amber Samovar style decanter
w/3 flat tumblers..... 165.00
Amber Farber #1325 30oz. decanter
& 6 cordials..... 75.00
Amber Farber #3400/113 35oz. de-
cancer, 6 #3109 2oz. tumblers. 92.50

PITCHERS & WATER SETS

#111 3½ pint Jug, crystal w/deep
plate etch Grape #401.....\$ 39.50
#58 3½ pint Jug, pink w/deep etch
Martha & 2 juice tumblers..... 95.00
#119 83oz. E Tulip Pitcher, green. 85.00
#119 83oz. E Tulip Pitcher & 6
#1630 12oz. tumblers, green... 125.00

OPAQUES - OPAQUES - OPAQUES

Jade 10½" center hldd. Tray.....\$ 30.00
Azurite 8½" Bowl..... 29.75
Azurite 7" Bowl w/gold..... 25.00
Azurite 10" Candlesticks, square
base, pair..... 55.00
Ebony #638 3-lite Candlesticks
E #739 w/gold..... 49.50
Ivory Rams Head Bowl & pair of
Doric candlesticks..... 350.00

WINDSOR BLUE

Nude 7" Compote.....\$475.00
Nude Candlesticks w/bobeche
& prisms, pair..... 295.00
Flying Lady Bowl..... 850.00
Shell toed 2" Candles, pair..... 350.00

CROWN TUSCAN

Cornucopia 3½" Vase.....\$ 29.50
Shell 7" Plate..... 24.75
Plates, 5" (3) ea..... 15.00

CROWN TUSCAN - continued

Ashtray, 4" 3-toed.....\$ 25.00
Ashtrays, 3" 3-toed (3) ea..... 15.00
Relish, 3-part..... 24.75
Covered Candy, 3-part..... 55.00
#1130 11" Vase turned into an
24" electric Lamp..... 195.00
Covered Candy, 6" ftd..... 65.00
Covered Cigarette box..... 45.00
#1299 11" ftd. Vase (2) ea..... 45.00
#1617 11" ftd. Vase..... 45.00
#274 10" ftd. Vase (2) ea..... 24.75
Keyhole 10" Vase..... 35.00
Sea Shell #66 4" Candles, pair..... 175.00
Pair 3½" dolphin Candles..... 295.00

DECORATED - CROWN TUSCAN

Ashtray, 4" 3-toed.....\$ 35.00
Sea Shell Plates, 5" (3) ea..... 25.00
Covered Cigarette box..... 75.00
Covered Candy, 3-part..... 95.00

NOTE: See Nude Stem items for more
crown tuscan

FARBER NUDE STEMS

Compote, green.....\$ 42.50
Compote, amber..... 42.50

#3011 NUDE STEM ITEMS

Brandies: amber (3); dk green (2)..\$115.00
gold krystal (4)..... 120.00
carmen..... 125.00
crystal; gold krystal - both
optic..... 125.00
Cocktails: amethyst (6); dk grn.(2) 115.00
amber; gold krystal (2)..... 120.00
crown tuscan w/yellow bowl (10) 120/00
carmen; royal blue; crystal
w/black stem (2)..... 125.00
carmen w/frosted stem..... 145.00
Clarets: amethyst (3); dk grn. (3). 140.00
carmen..... 150.00
Table Goblets: amethyst (6); dark
green (6)..... 125.00
carmen (5)..... 140.00
Champagne: carmen..... 135.00
Ashtrays: dark green..... 200.00
carmen (2); royal blue..... 225.00
Cigarette Box: crystal 9" nude,
engraved "FCH"..... 275.00
royal blue 7½" nude, star cut.. 325.00

NOTE: Ivy Balls and other Nude Stem items
. continued on next page

NADINE PANKOW

#3011 NUDE STEM ITEMS - continued

Ivy Balls: carmen; crystal optic; amethyst; royal blue.....	\$175.00
crown tuscan.....	225.00
carmen; royal blue - both w/frosted nude stem.....	250.00
Compote, cupped: crystal; dark green; carmen (5).....	120.00
Compote, flared: crystal (2).....	115.00
amethyst (4); dark green (2)...	125.00
Compote, SS/10: crown tuscan (2)...	155.00
crown tuscan w/gold dec. (2)...	175.00
Compote, SS/11: crown tuscan (3)...	155.00
windsor blue 7½".....	475.00
Candlesticks: windsor blue w/bobeche.....	295.00
Flying Lady Bowl: crown tuscan....	225.00
amber; amethyst, ea.....	675.00
windsor blue.....	850.00
<u>FIGURE FLOWER HOLDERS</u>	
Draped Lady: 8½" crystal.....	\$ 50.00
8½" lt. pink; 8½" med. pink....	100.00
8½" frosted pink; 8½" green....	125.00
8½" frosted green.....	140.00
8½" light amber.....	150.00
8½" dark amber.....	225.00
8½" blue.....	350.00
13" crystal frosted.....	160.00
13" dark pink, base fracture...	175.00
13" frosted pale pink; half & half frosted light pink.....	200.00
13" frosted green; green.....	225.00
13" dark amber.....	325.00
Bashful Charlotte: 6½" crystal....	75.00
6½" green.....	145.00
11" crystal.....	140.00
11" frosted blue.....	500.00
Rose Lady: light pink.....	200.00
dark pink.....	215.00
crystal; amber.....	225.00
green.....	245.00
frosted green.....	250.00
frosted crystal, tall base....	225.00
frosted dark amber, tall base..	250.00
Two-Kid: crystal.....	150.00
green; dark pink.....	200.00
frosted green.....	225.00
Melon Boy: pink.....	450.00
Bird: green.....	300.00
Mandolin Lady: crystal.....	195.00
green.....	275.00
Oriental figure (Geisha): one bun w/wood base, crystal.....	200.00
one bun w/2-piece screw base...	295.00

ANIMALS - ANIMALS - ANIMALS

Scotty bookend: crystal.....	\$ 55.00
frosted crystal.....	55.00
Eagle bookend: crystal.....	85.00
Swan: 3½" pink (6) ea.....	30.00
3½" light green.....	35.00
3½" dark green.....	45.00
10½" crystal.....	95.00
10½" pink.....	200.00
13" green.....	395.00

APPLE BLOSSOM - Gold Krystol

#3400 Cup.....	\$ 9.75
#3130 Champagnes (5) ea.....	12.75
Underplates, square (3) ea.....	2.75
Ftd. Tumblers, 2½ oz. (6) ea.....	24.50

APPLE BLOSSOM

#3400/9 7" covered Candy, green....	\$ 85.00
#1093 6" center hdd. Relish, crystal.....	25.00

CANDLELIGHT

#3114 Goblets (5) ea.....	\$ 27.50
#3114 Champagnes (7) ea.....	25.00
#3111 ftd. Tumblers, 5 oz. (9) ea..	34.75
#3400/4 12" 4-toed Bowl.....	45.00
#3900 cream & sugar, pair.....	32.50

CHANTILLY

#1261 French Dressing Bottle, engraved w/sterling base.....	\$ 75.00
#1261 French Dressing Bottle, engr. w/sterling base and stopper....	75.00
#3400 Shakers w/sterling base and lid, pair.....	24.50
M495 2-lite Candlestick.....	18.00
#312 5½" covered Candy, flat tab hdd.....	49.50
3400/156 12 oz. Decanter w/sterling base.....	150.00

CLEO - Various Colors

Plates, 8½" green (11) ea.....	\$ 5.75
Ice Bucket, green.....	50.00
#627 4" Candle, pink.....	20.00
Butter base, amber.....	30.00
#3077 Goblets, blue (8) ea.....	45.00
#3077 Champagnes, blue (6) ea.....	40.00

DIANE

#306 covered Candy w/cut knob, crystal.....	\$ 35.00
#115 Barrel Tumblers (6) ea.....	24.75

ELAINE

#3500 Parfaits (6) ea.....	\$ 42.75
#1402 Sherbets (8) ea.....	15.00
#1402 4-piece divided Mayo.....	40.00

. continued on next page

NADINE PANKOW

ETCH #731 (Rosalie)

Ice Teas 12 oz., amber (4) ea.....\$ 9.75

ETCH #732

Oval covered Vegetable Bowl, pink..\$145.00

ETCH #739

#87 Tall covered Candy, crystal....\$ 32.75

#638 Triple Candles, ebony
w/gold, pair..... 65.00

ETCH #760

4-toed Clover Bowl, 11½" x 5½"
deep, crystal.....\$ 19.00

HUNT SCENE

Bulbous stem Champagnes, green (8).\$ 20.00

#3077 Champagne, green..... 20.00

#1402 18 oz. Goblets, crystal (6).. 35.00

LORNA

2-piece Cheese & Cracker, pink.....\$ 39.75

Cocktail Shaker, crystal..... 35.00

MINERVA

Goblets 10 oz. (8) ea.....\$ 15.00

WILDFLOWER

#3400/38 12 oz. Tumbler.....\$ 16.75

#3900/67 5" Candlestick..... 29.75

#646 5" Keyhole Candlestick..... 19.50

#3500/57 3-part covered Candy..... 55.00

#3400/9 7" covered Candy..... 49.75

CAPRICE - Crystal

Cup & Saucer (10) ea. set.....\$ 10.00

#70 7" Candlesticks, pair..... 24.50

#96 Salt Shaker..... 8.50

#90 or #91 1½" Shakers, pair..... 24.50

#300 Champagnes (8) ea..... 8.00

#300 Cordials (6) ea..... 35.00

CAPRICE - Blue

#216 5" Ashtray.....\$ 15.00

#110 twin Mayo..... 125.00

#300 Goblets (6) ea..... 32.50

#300 low Sherbets (2) ea..... 22.50

#300 12 oz. Ice Teas (4) ea..... 30.00

#300 Cocktails (9) ea..... 42.50

#300 Wines (3) ea..... 65.00

CAPRICE - Blue Alpine

Plate, flat 14½".....\$ 65.00

3-part Clover Relish..... 35.00

EVERGLADE

3" low Candles w/legs, crystal....\$ 32.50

15" frosted Swan Bowl, crystal..... 85.00

3½" high x 6½" wide, footed
Compote, crystal..... 20.00

16" Buffalo Bowl, blue..... 175.00

#46 10 oz. ftd. Tumblers, blue (2). 45.00

ROUND

#395 5½" Shakers, blue, pair.....\$ 29.75

#837 Tray for shakers, blue..... 15.00

#3143 GYRO OPTIC

Tumblers 13 oz., blue (6) ea.....\$ 9.75

#40 83 oz. ice lip Pitcher, blue... 80.00

#38 80 oz. ice lip Ball Jug, blue.. 80.00

NAUTILUS

Tilt Shakers, royal blue, pair.....\$ 45.00

SEA SHELL

#66 4" Candle w/dolphin stem,
crystal.....\$ 59.75

#44 6" Flower Center, crystal..... 22.00

Cream & Sugar, crystal, pair..... 24.75

#1713 3-piece Ashtray Set,
all mandarin gold..... 42.00

STRADIVARI/REGENCY

Cocktail, pistachio.....\$ 26.00

Cordial, tahoe blue..... 45.00

Cordial, pistachio..... 45.00

Cordial, pink..... 45.00

TALLY-HO

Cup & Saucer, dark green.....\$ 12.00

ROSEPOINT - ROSEPOINT - ROSEPOINT

M170 13" Cake Tray.....\$275.00

#1532 3-piece blown Mayo Set..... 70.00

#1533 4½" blown dome cover..... 495.00

#1337 Cigarette holder/ashtray.... 145.00

#147 8 oz. open Marmalade & plate.. 59.75

#647 2-lite keyhole Candles, pair.. 55.00

M495 2-lite Candles, pair..... 75.00

P360 Salt Shaker..... 45.00

#115 13 oz. Barrel Tumbler (3) ea.. 45.00

#7966 Sherries (6) ea..... 95.00

#3106 stem Juice Tumblers (6) ea... 65.00

#497 9 oz. flat Tumblers (2) ea.... 42.50

#300 cone Juice Tumblers (6) ea.... 55.00

#3121 Goblets (12) ea..... 24.50

#3121 Champagnes (12) ea..... 19.75

#3121 Ice Teas (12) ea..... 32.50

#3121 low Sherbets (12) ea..... 18.75

#3121 Cocktails (12) ea..... 27.00

#3121 Wines (12) ea..... 52.50

#3121 Clarets (12) ea..... 65.00

#3121 ftd. Juice Tumblers (7) ea... 32.50

#3121 5½" blown open Candy..... 60.00

#3900 10½" Dinner Plates (2)..... 95.00

#3900/120 12" 5-part Celery/Relish. 50.00

#3900/671 Ice Bucket..... 165.00

#3900/111 4-piece Mayo set..... 85.00

#3900/68 5" Candles, pair..... 120.00

#3900/69 5" Candle..... 60.00

#3900/1177 optic Salt Shaker..... 16.00

#3900/1177 non-optic Salt Shaker... 16.00

#3900/41 Cream & Sugar, pair (2)... 39.75

#3900/41 Sugar..... 16.50

. continued on next page

NADINE PANKOW

ROSEPOINT - continued

#3500	Champagnes (13) ea.....	\$ 20.00
#3500	10 oz. ftd. Tumblers (7) ea..	19.75
#3500	Cocktails (15) ea.....	28.00
#3500	Oyster Cocktails (8) ea.....	38.50
#3500	Parfaits (8) ea.....	55.00
#3500	13 oz. Ice Teas (4) ea.....	32.50
#3500	Sherbets (8) ea.....	24.75
#3500/64	10" 3-pt Celery/Relish (4)	35.00
#3500/57	8" 2-part covered Candy...	95.00
#3500/47	5" 2-hdd. BonBon (2) ea..	29.50
#3500/148	6" Compote (4) ea.....	75.00
#3500/652	12" Celery.....	40.00
#3500/71	3-pt center hdd. Relish..	95.00
#3500/112	3-pt Celery/Relish 15" x 4 1/2".....	175.00
#3500/61	6 1/2" ring hdd. 3-part Relish (2) ea.....	42.50
#3500/69	6 1/2" 3-part Relish on sterling base.....	45.00
#3500/78	6" Rams Head Candy w/lid..	275.00
#3500/14	Cream & Sugar.....	38.50
#3500/15	individual Cream & Sugar..	42.50
#3500/108	2 1/2" Candlestick (3) ea...	25.00
#3500/108	same w/arms and vases....	95.00
#3500/69	6 1/2" 3-part Relish.....	35.00
#3500/17	12" ftd. Bowl.....	82.50
#3400	9 1/2" Dinner Plates (8) ea.....	70.00
#3400	Cup & Saucer sets (8) ea set.	40.00
#3400/100	76 oz. ice lip Pitcher...	185.00
#3400/91	8" 3-part Relish.....	32.50
#3400/10	11" center hdd. Tray.....	175.00
#3400/4	12" 4-toed Bowl.....	50.00
#3400/74	5" 4-toed Nut Dish.....	59.25
#3400/52	base for Butter.....	52.50
#3400/90	6" 2-part Relish.....	27.50
#3400/68	Cream & Sugar Sets (4) ea.	38.50
#3400/68	Sugar.....	18.00
#3400	3 1/2" tall Shakers w/glass tops, pair (3) ea pair.....	45.00

ALL MINT - PRICED EACH OR IN SETS

UPS \$3 Extra - Send SASE Please.

Satisfaction Guaranteed - Return within
seven (7) days - Sticker must be intact.

NO EXCEPTIONS!

HAPPY COLLECTING

NADINE PANKOW

207 S. Oakwood
Willow Springs, IL 60480
312 / 839-5231

The DAZE

* SPECIAL OFFER
to NCC friends
\$2. off the 1 year
subscription price,
when on this form
or copy of.

The Original. National monthly newspaper dedicated to the buying, selling & collecting of colored glassware and china including Depression Glass and the Elegant Glass (Cambridge, Heisey, Fostoria etc.). We educate and inform you each month with feature articles by top notch columnists, readers "finds", club happenings, show news and a multitude of ads. Find those missing pieces to your 30s, 40s or 50s pattern. Can't identify it? Perhaps we can help. "Keep up with what's happening with a subscription to the DAZE. Buy, sell or trade from the convenience of your easy chair.

Name _____ Street _____

City _____ State _____ Zip _____

1 yr. \$15.00 2 yrs. \$29.00 \$1.75 single current copy
 Check enclosed MasterCard Visa

Exp. date _____ Card No. _____

Signature _____

Orders to D.G.D., Box 57NC, Otisville, MI 48463

Please allow 30 days for your first issue— Canadian subscribers,
add \$1. per year and subscribe by charge card only! This Special Offer
May Not Be Combined With Other Special Offers

SPRINGFIELD

Antique Show & Flea Market

Clark County Fairgrounds

SPRINGFIELD, OH

Exit 59 on I-70

400-800 DEALERS

INSIDE AND OUTSIDE

Ohio's largest year round show with an
emphasis on quality antiques

9:00 AM - 5:00 PM

Admission \$1.00 per Weekend

Children under 12 FREE

NEXT SHOW

OCT. 17-18 Inside & Outside

1987 SHOW DATES

OCT. 17-18 INSIDE & OUTSIDE

NOV. 14-15 INSIDE
DEC. 12-13 INSIDE

BRUCE KNIGHT, MGR.

For Information Write:
P.O. Box 2429, Springfield, OH 45501
Phone (513) 325-0053



PARR

PARR ASSOCIATES INC. (415) 285-5657

JOHN PARR - PHILIP CABAN

592 GUERRERO STREET, SAN FRANCISCO, CA 94110-1018

CAMBRIDGE FOR SALE

CARMEN NUDE STEMS

short stem cigarette bx.
with lid
ashtray
claret
ivy ball frosted nude
ivy ball
cocktail
champagne
7" comport cupped
water goblet
brandy

FOREST GREEN NUDE STEMS

banquet goblet
water goblet
cocktail
brandy
champagne
claret
ivy ball
7" comport cupped

CRYSTAL NUDE STEMS

cigarette bx. w/lid short
ashtray
7" comport cupped
ivy ball
301-27/5 3/8" blown comport
hoch vichy etch
cocktail black nude stem

NUDE STEMS ODD COLORS

brandy moonlight blue bowl
cocktail moonlight blue bowl
cocktail smoke bowl
cocktail ritz blue bowl
brandy ritz blue bowl

ROSEPOINT CRYSTAL

103/2 pcs. nite set
P 747 cigarette bx. & cover
3900/114 32oz martini
pitcher
3400-52/5" butter & cover
3400-4/12" bowl
279 vase 13 1/2"
1242 vase 11"
3500-21/12" oval bowl
gadron gold
3900-100/6oz. oil
1066 ivy ball
1532/mayo, liner, spoon

AMBER NUDE STEMS

ashtray \$325-
Imperial amber nude w/crystal 125-
bowl cocktail 95-
cocktail 250-
ivy ball 275-
7" comport cupped 175-
claret 150-
brandy 185-
champagne

CROWN TUSCAN NUDE STEMS

95- candlestix pr. \$350-
single stix w/rose point etch
on base 775-
7" comport flared 300-
ivy ball 300-
cocktail yellow bowl 105-
6" comport 100-

YELLOW NUDE STEMS

175- cocktail \$150-
150- cocktail frosted nude 175-
brandy 160-

AMYTHEST NUDE STEMS

150- bud vase \$650-
110- water goblet 160-
125- champagne 125-
750- ivy ball 275-
700- cocktail 150-
65- cocktail frosted nude 175-
brandy 150-
claret 195-

ROSEPOINT COLORED

250- amber 797/8" flip vase \$450-
200- black bud vase 350-

ROSEPOINT CRYSTAL

3121 5 3/8" blown candy
& cover \$420-
pr. 1613 hurricane shades on
dolphin bases bobeches & prisms
total height 17 1/2" 750-
pr. 1338/6" 3 lite stix 175-
cocktail shaker chrome lid 13" 175-
1238 12" keyhole vase 175-
300/6" candy & cover carmen
knob 275-
3500-37/7" comport 150-
3900-65/ candy & cover 185-
3400/cheese & cracker 150-
125- footed mustard sterling lid 170-

continued on next page



PARR

PARR ASSOCIATES INC. (415) 285-5657

JOHN PARR - PHILIP CABAN

592 GUERRERO STREET, SAN FRANCISCO, CA 94110-1018

FLOWER FROGS

melon boy lite pink
 draped lady 8 1/2" amber
 " " " " yellow
 " " 13 1/2" amber
 " " " " pink
 " " " " green
 rose lady green
 rose lady tall base pink
 2 kids pink
 " " green
 " " amber
 september mourn 11 1/2" pink
 " " " " amber
 frosted
 september mourn 11 1/2"
 moonlite blue
 bird frog green

GLORIA CLEAR

80 oz. ball jug
 MOUNT VERNON AMBER
 3 1/2 oz. cocktail
 3 oz. wine
 claret
 oyster cocktail

BASKETS 8"

amythest
 black
 custard
 crown tuscan
 rubina
 clear chelse 11"
CAPRICE
 blue oval bowl footed
 blue C-70 7" stix with
 prisms pr.
 amber 7 1/2" vase

CHANTILLY

clear cornucopia sterling
 bases pr.
 cocktail shaker sterling
 knob, top
 oil bottle sterling top
 and base
 32 oz. tilt decanter
 sterling foot
 small martini pitcher
 sterling base
 epergne 6 pieces gorgous

SWANS

\$550- gold crystal 10 1/2" no. 1
 200- style signed \$1200-
 250- milk glass 4" 150-
 300- apple green 4" no. 1 style 45-
 300- " " 10 1/2" signed no. 1
 300- style 250-
 250- heatherbloom 10 1/2" signed
 275- no. 1 style 300-
 250- black 10 1/2" signed no. 1
 250- style 250-
 250- black 8 1/2" signed no. 1
 300- style 200-
 black 13 1/2" signed no. 1
 350- style 500-
 crystal frosted 8 1/2" no. 1
 650- style signed 150-
 250- ELAINE CLEAR
 80 oz. ball jug \$250-
 8 cordials labels 55-
CAMBRIDGE MISC.
 25- monkey lamp \$1500-
 25- rubina 6 1/2" tall comport 190-
 25- rubina 8" basket 325-
 20- clear caprice 3 toed candy 40-
 carmen bitter bottle 65-
 \$200- clear bitter bottle 40-
 150- forest green bitter bottle 50-
 250- crystal square 3797 oils and
 250- stopper pr. 95-
 350- tally ho cordials 1402 35-
 125- amber 3400-106 marmalade and
 599 coaster 65-
 \$75- 7 1/2" caprice vase 110-
DIANA CLEAR
 125- 80 oz. ball jug 3900-116 \$250-
 125- CROWN TUSCAN
 gadroon urn & cover 10" \$160-
 gadroon urn & cover 12"
 \$160- lid chiped 160-
 8 1/2" swan no. 3 style 175-
 150- 10" urn & cover D995 etch
 acid sign 450-
 150- 1307 candleabum D995 etch
 acid sign pr. 300-
 210- dolphin stix pr. 275-
 2 vases 1130/11" d/1007-8
 250- acid sign 175-
 175- shell cornucopia 125-

continued on page 16



PARR ASSOCIATES INC. (415) 285-5657

JOHN PARR - PHILIP CABAN

592 GUERRERO STREET, SAN FRANCISCO, CA 94110-1018

FLYING NUDE BOWLS

carmen	\$850-	forest green	\$650-
amythest	750-	amber	750-
crown tuscan			

We have a large inventory of glass but cannot list it all. please let us know your wants so we can update our files, all our glass is guaranteed old with return privileges. Thanks for your orders in the past years, don't forget our show October 11 & 12 1987 at the Hall of Flowers, San Francisco.

Best to call real early or real late or leave a message with our electronic butler, and we will get back to you!

We are looking for the following items for our personal collection in cobalt (royal blue): cambridge flying nude bowl, nude stems with cobalt bowl, bud vase, hoch, cordial, stix, V cocktail, sweatmeat dish, mint dish, any cobalt heisey glass, american sweetheart salad set in blue. Thank you.

**COLUMBUS ANTIQUE
FLEA MARKET
(ANTIQUES & COLLECTIBLES)**

Ohio State Fairgrounds - Lausche Building
Off I-71 Exit 17th Avenue - Columbus, Ohio

OCTOBER 11th

Sunday Only - 7 A.M. to 4 P.M.
Show Admission \$1.50 - Under 12 Free
150 QUALITY DEALERS

SELLING Advertising Art Deco, books, Cambridge, clocks, coins, collectibles, Depression glass, dolls, Fiesta, fine early furniture, Heisey, jewelry, lamps, oak furniture, post cards, pottery, good primitives, tools and print shop items



4214 North High Street, Columbus, Ohio 43214
(614) 267-8163 (614) 263-6830 (614) 885-2352

NEXT SHOWS: Nov. 8th; Dec. 13th

— Classified —

WANTED TO BUY: Stopper for Cambridge Barrel Set. **R. Clarke West**, 3433 Turner Dr., Springfield, OH 45504. Phone: 513/390-3617.

FOR SALE: #3122 Diane etched: 7 1/4" goblets (11) \$25 ea.; 5" juices (12) \$20 ea.; Sherbets (8) \$20 ea.; 6 1/4" under plates (5) \$12 ea. **Barbara Jennings**, 134 Garden Parkway, Henrietta, NY 14467. 716/334-5066.

FOR SALE: Apple Blossom: 1 Goblet \$20. Caprice: 6 Sherbets \$12; 15 individual Ash-trays w/match holders \$7; 15 7" Plates \$7.50; 20 9 1/2" Plates \$25; 3-toed covered Candy \$40; 10 ftd. Waters \$12.50; 5 Cocktails \$20; 13 1/2" 4-ftd. Plate #35; 14 Cups & Saucers \$15. Cascade: 2 Goblets, 4 ftd. juices \$12. Chantilly: #3600 10 Cocktails gold rim and foot (beautiful) \$20; #3625 9 Wines \$35. Elaine: #3130 1 Cordial \$30; #3500 3 Ice Teas, 8 Sherbets, 5 4 3/4" flat Tumblers \$20. Mt. Vernon: 2 Wines \$12.50. Portia: 4 #3121 Champagnes \$18. Rosepoint: 9 4 3/4" flat Tumblers \$30; 5 #3500 low Goblets \$27.50; 1 #3500 Wine \$50; 4 #3121 Sherbets \$22.50; 2 #3400/52 Cup & Saucer \$37.50; 10 sets #3400/54 Cup and Saucer \$35; 1 #3900/66 14" Plate \$60; 1 #3400 Dinner Plate \$95, also one with acid spill pit mark \$65; 1 #1617 Hurricane Lamp \$200. Swans: 2 3 1/2" crown tuscan \$35; 1 3 1/2" ebony \$65. Tomato 8" Vase \$75. All prices each plus shipping. Also much Fostoria, Duncan, Imperial, Cambridge, etc. Please send specific wants. I search. SASE required. **Betty J. Anonby**, Crystal Matching Service, Route 2, Box 58A, Kenyon, MN 55946.

**VISIT YOUR MUSEUM
of
CAMBRIDGE GLASS**

HOURS:

Wednesday thru Sunday - 12:00 to 4:00 P.M.

MARCH thru OCTOBER

Take It From Flo!

Glass Collector's Digest

is a great magazine for all glass lovers!

In all, you receive
6 issues yearly.
576 pages (96 in color)
of entertainment
and information
for just \$16 per year!
Moneyback guarantee.



To subscribe, send check to:

Glass Collector's Digest

Dept. HN, P.O. Box 553, Marietta, OH 45750

Or use your charge card by calling

1-800-533-3433 (outside Ohio) or 1-614-373-9959 (in Ohio).

VISA, MasterCard, and American Express Accepted

AN IDEAL CHRISTMAS GIFT!

*"No matter what you're selling, the most
important thing you're selling is yourself."*

DIAMOND JIM BRADY

WELCOME TO GLASS COUNTRY!

STOP AND SEE US

WE FEATURE GLASSWARE OF:
CAMBRIDGE, HEISEY, FENTON & FOSTORIA
Plus a full line of Art Pottery and a General line of Quality Antiques

*Stage Coach
Antique Mall*

RT. 40, ONE-HALF MILE WEST OF I-70 NORWICH EXIT #164
MANY DEALERS-WIDE SELECTION-PLENTY PARKING

**DORIS AND ROY ISAACS
BUY AND SELL
614-872-3720**



7525 EAST PIKE
NORWICH, OHIO 43767

MON THRU SAT 10-5:30 SUN 12-5:30
SUMMER EVENING HOURS BY CHANCE

MANY DEALERS - PLENTY OF PARKING

DEALERS



DIRECTORY

NOTE: When writing to the Dealers listed here, please enclose a SASE!

<p>MILBRA'S MATCHING SERVICE P.O. Box 363, Rio Vista, TX 76093 Milbra Long 817 / 645-6066 FOSTORIA * CAMBRIDGE * HEISEY * DEPRESSION ERA GLASSWARE BUY and SELL</p>	<p>BENICIA ANTIQUE SHOP 305 First Street Benicia, California 94510 OPEN 11 AM - 5 PM Closed Monday Z. E. LOPES 707-745-0978</p>	<p>THE MUTED SWAN ANTIQUES 5486 Peachtree Rd. Chamblee, GA 30341 Heart of Chamblee Antique Row Specializing in Cambridge, Heisey and Fostoria Bill & Pat Miller 404-451-7620</p>
<p>ANDREJCAK'S ANTIQUES 14533 Bayes Ave. Lakewood, Ohio 44107 Joe & Karen Andrejcek 216-226-3417 SHOWS ONLY — CAMBRIDGE — FENTON — CHINA</p>	<p>VISIT HISTORIC BENICIA and its 28 shops Off Interstate #80 North of San Francisco</p>	<p>SPECIALIZE IN CAMBRIDGE GLASS & ANTIQUES DOYLE L. BYINGTON 553 Sanchez Street, San Francisco, CA 94114 415/621-1854 Shows: Mail-Order - Buy & Sell - By Appointment</p>
<p>BOGART'S ANTIQUES Stagecoach Mall, Building #2 Norwich, OH 43767 ***** Jack and Sharon Bogart 614/826-7439 and 614/872-3514 ***** BUY - SELL - APPRAISE - REFINISH SEAT WEAVING - CLOCK REPAIR COPPER & BRASS POLISHING GENERAL LINE CAMBRIDGE GLASS</p>	<p>ANTIQUES ON THE MALL SPECIALIZING IN CAMBRIDGE GLASS Stagecoach Mall - Bldg. 3 - Norwich, OH Virginia Bennett 614/432-4483 64183 Warne Drive, Cambridge, OH 43725</p>	<p>BERKELEY ANTIQUES 69 Berkeley St., Boston, MA 02116 OPEN: Monday thru Saturday 11 AM to 5 PM GEORGE & FRANK 617/426-1048 DUNCAN, CAMBRIDGE, HEISEY, GENERAL LINE</p>
<p>THE GLASS CUPBOARD 39 Shire Oaks Drive Pittsford, New York 14534 Marcia Ellis Cambridge, Duncan Miller (716) 586-7596 Shows, Mail Order, Appt.</p>	<p>JUDY'S ANTIQUES Judy Bennett 422 S. Ninth Street (Corner of Jefferson) Cambridge, Ohio 43725 BUYING Ph. 614-432-5855 SELLING <i>Cambridge Glass my Specialty</i></p>	<p>"Happiness Is" - The Stultzs 3106 Warren Court, Glen Allen, VA 23060 Shows and Mail (Richmond Area) 804/262-1273 GLASS CIRCA 1890-1960</p>
<p>PEG AND DALE GOTSCHALL Antiques, Cambridge and Other Quality Glass 833 N. 6th St., Cambridge, Ohio 43725 Phone 614/432-5529 Stagecoach Mall — Bldg. 2 — Norwich, Ohio</p>	<p>GREEN ACRES FARM 2678 Hazelton Etna Rd., Pataskala, OH 43062 (State Route 310 North) Sat. & Sun. 1-7 PM 614/927-1882 Antiques, Crystal Glass and Collectibles</p>	<p>MOSTLY HEISEY 16 Clayton Place, Albany, NY 12209 Rhoda Curley 518 / 482-6272 SHOP and MAIL ORDER</p>
<p>THE HITCHING POST 7467 S. R. 88 Ravenna, OH 44266 Ph. 216-296-3686 D. McDaniel CAMBRIDGE — HEISEY — GENERAL LINE</p>	<p>BUY-SELL 513/390-3617 Taste of Honey Glassware—Collectibles CLARKE & CAROLE WEST 3433 Turner Dr. Springfield, OH 45504</p>	<p>1886 HOUSE East Schodack, N.Y. 12063 MAIL and SHOWS Laurie Cruise 518-477-5895 CAMBRIDGE - NORITAKE - AZALEA - D.G.</p>
<p>L & M ANTIQUES 1331 S.E. 4th Ave., Pompano Beach, FL 33060 Lydia & Cliff McNeil 305/943-2274 CAMBRIDGE & FOSTORIA OUR SPECIALTY Buy & Sell Shows Only</p>	<p>REMEMBRANCES 7597 Daphne Dr., No. Syracuse, NY 13212 Shirley S. Ladouceur 315 / 458-5297 ANTIQUES and COLLECTIBLES MAIL ORDER SHOWS APPOINTMENTS</p>	<p>MARGARET LANE ANTIQUES 2 E. Main St., New Concord, OH 43762 Lynn Welker 614/826-4418 CAMBRIDGE GLASS MATCHING SERVICE Hours Mon.-Fri. 1-5 PM or by Appointment</p>
<p>THE GLASS URN 456 West Main Street, Suite G. Mesa, AZ 85201 602 / 833-2702 Mail Order Shows Open Shop CAMBRIDGE, FOSTORIA, HEISEY, ETC.</p>	<p>AL STEELE Westerville, Ohio 614-882-6483 or 614-882-7124 Mail Orders and Shows Only HEISEY — CAMBRIDGE — PATTERN GLASS</p>	<p>BUD'S TRADING POST GENERAL STORE — FLEA MARKET 501 Wheeling Ave. Cambridge, OH 43725 10-5 Mon. thru Sat. 614-432-4688 CAMBRIDGE - PATTERN - ART GLASS This Bud's for Y'all</p>

HAVE MORE FUN COLLECTING GLASS - JOIN A NATIONAL GLASS CLUB

BECOME MORE KNOWLEDGEABLE ABOUT YOUR COLLECTIBLE GLASS

The National glass collecting clubs listed below have each been organized to serve you, the collector. Each club is dedicated to the education of the collector, and the preservation of their particular type or manufacture of glassware. Each would appreciate the opportunity to help you achieve more satisfaction from your collection.

If you are interested in membership in any of these organizations, check the list below. The appropriate club(s) will acknowledge your application with either a membership card (if remittance is enclosed) or additional information as required.
MAIL TO:

NATIONAL GLASS CLUBS

P.O. Box 416
Cambridge, OH 43725

My Name is _____

Address _____

City _____ State _____ Zip Code _____

I am interested in the following club(s)

- | | |
|--|---------|
| _____ Fenton Art Glass Collectors of America, Inc. | \$10.00 |
| _____ Fostoria Glass Society of America, Inc. | \$10.00 |
| _____ Heisey Collectors of America, Inc. | \$15.00 |
| _____ National Cambridge Collectors, Inc. | \$13.00 |
| _____ National Depression Glass Association, Inc. | \$10.00 |
| _____ National Duncan Glass Society | \$10.00 |
| _____ National Imperial Glass Collectors Society | \$10.00 |
| _____ Tiffin Glass Collectors Club | \$15.00 |

Please make check payable to the name of the organization you wish to join

1988 DATES

CALENDAR OF EVENTS

(mark your calendar now)

FEBRUARY QUARTERLY MEETING
Friday, February 26th - 8 PM

ALL-CAMBRIDGE GLASS AUCTION
Saturday, February 27th - 10:30 AM
(Preview beginning at 9:30 AM)

15th ANNUAL N.C.C. CONVENTION
June 23, 24, 25, 26

13th ANNUAL ANTIQUE SHOW & SALE
June 24, 25, 26

AUGUST QUARTERLY MEETING
Saturday, August 6th - Picnic at Noon
Flea Market 10 AM - Meeting 1 pm

National Cambridge Collectors, Inc.
P. O. Box 416 Cambridge, Ohio 43725

FIRST CLASS MAIL

FIRST CLASS MAIL
U.S. POSTAGE
PAID
So Vienna, Ohio
45369
Permit No. 15

