



# Cambridge Crystal Ball

Published monthly by the National Cambridge Collectors, Inc.  
to encourage and report the discovery of the elegant and boundless product  
of the Cambridge Glass Company of Cambridge, Ohio

Issue No. 165

January 1987

## THOUGHTS FROM YOUR PRESIDENT . . . . .

I promise you Phyllis, that this will be the last article I submit in this condition. I should be able to type the next one. . . . . If all of you are wondering what this is about, I wrote the last article (December issue) in longhand while lying on my back in the hospital, under the influence . . . .

Now my handwriting is not terrible, IT IS ATROCIOUS -- under the best of circumstances. Under those circumstances, actually what I submitted was a bunch of wavy lines and scratches. I wrote a note and sent it along with the article telling Phyllis, if she could not decipher my writing to just "File 13" it and put a few lines in wishing everyone a "Merry Christmas and Happy New Year." Low and behold, when I received my CRYSTAL BALL the article was in it. I talked to Bill and Phyllis the other night via phone, and I apologized to Phyllis for making her spend so much time figuring out what I had written. I told her she needn't have done that because I had sent a note along with the article telling her to "File 13" it if she couldn't read it. Her comment was, "Oh, is that what the note said?" Now I really felt bad! However, she assured me that she had no problem with the article. She knew a Professor of Ancient

History at Ohio State University who specialized in the translation of Sanskrit. She merely sent my article to him and he translated it for her!

On the more serious side -- the Annual Auction will be coming up before you know it. The Auction list, filled with all those goodies, will be in this issue. Make plans to attend both the Auction and the Quarterly Meeting. As usual, I guarantee fine weather for this event.

From my point of view, the initial orders for the Eagle Bookends was not as successful as we had hoped. I know this bookend series has been a long, drawn-out affair, but there was nothing we could do about it as we didn't own the molds. We now own all of the bookend molds and will try to complete the series as soon as possible. I think anyone who has the Lady Legs, Lion and Scotty Dog Bookends and didn't order this one is really missing out. In fact even if you don't have all of the others you are still missing out. Where else can you buy a fine piece of glass, as the Eagle bookends are, in cobalt blue, for \$30? When Imperial made them for themselves in crystal they sold for \$50. The Imperial Hay Shed is asking \$100 for them now, and selling them!

To those of you who only had one family member and were restricted to only one during the initial issue period, you can now buy extra's at \$30 each, plus \$3 shipping - and \$1.65 sales tax if you live in Ohio. Since this

### Membership Renewal Notice

This is your **last** issue of the *Crystal Ball*—if the date on your address label reads **1-87**.

*Please renew now!*

continued on page 3

# CAMBRIDGE CRYSTAL BALL

Official publication of National Cambridge Collectors, Inc., a non-profit corporation with tax exempt status. Published once a month for the benefit of its members.

Membership is available for individual members at \$13 per year and additional members (12 years of age and residing in the household) at \$3 each. All members have voting rights, but only one *Crystal Ball* will be mailed per household.

Back issues of the *Crystal Ball* are available (beginning with Issue No. 1, May 1973) for members only. Cost \$.60 each or 12 issues for \$7.

## 1986-87 OFFICERS & COMMITTEE CHAIRPERSONS

|                              |                               |
|------------------------------|-------------------------------|
| PRESIDENT.....               | Willard P. Kolb               |
| VICE-PRESIDENT.....          | Mark A. Nye                   |
| SECRETARY.....               | Janice Y. Hughes              |
| TREASURER.....               | William C. Smith              |
| SERGEANT-AT-ARMS.....        | Marybelle Moorehead           |
| BUDGET & FINANCE.....        | David B. Rankin               |
| BY-LAWS.....                 | Ekkehart A. Vimmer            |
| CONVENTION.....              | Mark A. Nye                   |
| MEMBERSHIP.....              | Phyllis D. Smith              |
| MUSEUM.....                  | Billy F. Harbaugh             |
| PROGRAM & ENTERTAINMENT..... | Marlene K. Snyder             |
| PROJECT.....                 | Willard P. Kolb               |
| PUBLIC RELATIONS.....        | William C. & Phyllis D. Smith |
| PUBLICITY.....               | Joseph Andrejcek              |
| STUDY GROUP ADVISOR.....     | Phyllis D. Smith              |
| 1987 AUCTION.....            | Lynn M. Welker                |
| 1987 ANTIQUE SHOW.....       | Joy R. McFadden               |
| 1987 FLEA MARKET.....        | Larry F. Hughes               |
| CRYSTAL BALL EDITOR.....     | Phyllis D. Smith              |

## CLASSIFIED ADVERTISING RATES

5c per word \$1.00 minimum  
 We cannot mix type size in classified advertisements. Abbreviations and initials will count as words. Payment in full MUST accompany all ads.

## DISPLAY ADVERTISING RATES

(camera ready ads preferred)

|                            | Members | Non-Members |
|----------------------------|---------|-------------|
| 1 8 page (9 items) .....   | \$4.00  | \$6.00      |
| 1 4 page (20 items) .....  | 7.00    | 10.00       |
| 1 2 page (20 items) .....  | 12.00   | 18.00       |
| 3 4 page .....             | 17.00   | 25.00       |
| Full page (50 items) ..... | 22.00   | 33.00       |

## DEALERS DIRECTORY

5 line maximum ..... \$12.00 for 12 months  
 Cambridge *Crystal Ball* assumes no responsibility for items advertised and will not be responsible for error in price, description or other information.

*Advertising copy, articles, club news and notices must be in our hands by the 10th of each month to assure publication in our next issue. Paid advertisements containing reproductions or new glass will not knowingly be accepted for publication.*

Opinions or information stated in any signed article or letter printed in the *Crystal Ball* are those of the authors and may or may not agree with National Cambridge Collectors, Inc. The Editor reserves the right to refuse and to edit any material submitted for publication so as to conform with the editorial style of the *Crystal Ball*.

## PLEASE ADDRESS ALL CORRESPONDENCE TO

National Cambridge Collectors, Inc.  
 P.O. Box 416 Cambridge, Ohio 43725

**PRESIDENT: Willard Kolb .... 614/695-0695**  
**SECRETARY: Janice Hughes .... 614/432-7823**  
**EDITOR: Phyllis Smith .... 513/323-3888**

NCC MUSEUM of Cambridge Glass is located on U.S. Route 40, 1 8 mile east of I-77 near Cambridge. Hours: 12 noon to 4 PM - Wednesday thru Sunday. (March thru October)

PLEASE NOTIFY US IMMEDIATELY OF ANY CHANGE IN YOUR ADDRESS  
 Please enclose a SASE when requesting information

# CAMBRIDGE GLASS BOOKS FOR SALE

by National Cambridge Collectors, Inc.

\* **COLORS IN CAMBRIDGE GLASS**  
 (128 pages - 60 color plates - fully indexed)  
 Hardbound with Price Guide \$19.95

\* **1930-34 CAMBRIDGE GLASS CO. CATALOG REPRINT**  
 (250 page reprint of original catalog)  
 Hardbound with Price Guide \$14.95

\* **1949-53 CAMBRIDGE GLASS CO. CATALOG REPRINT**  
 (300 page reprint of original catalog)  
 Hardbound with Price Guide \$14.95

\* **1956-58 CAMBRIDGE GLASS CO. CATALOG REPRINT**  
 (164 page reprint of original catalog)  
 Paperback \$6.95

## 1985 COMBINED PRICE GUIDE

for 1930-34 & 1949-53 catalog reprints Postpaid \$5.75

\*NCC MEMBERS ONLY: *These publications are available at 10% discount - or all four (4) at one time for \$50.00.*

by Bill & Phyllis Smith

**CAMBRIDGE GLASS 1927-1929**  
 (66 page reprint of original catalog)  
 Paperback with Identification Guide \$7.95

by Mark Nye

**CAMBRIDGE STEMWARE**  
 (95 Stemware lines with 107 illustrations)  
 Paperback \$14.95

by Cambridge Buffs Study Group

**NEARCUT**  
 (108 page reprint of 1910 Cambridge Catalog)  
 Paperback with Price Guide \$9.95

by Mary, Lyle and Lynn Welker

**CAMBRIDGE GLASS CO.**  
 (120 pages of reprint from 8 old catalogs)  
 Paperback \$6.95

**CAMBRIDGE GLASS CO. BOOK II**  
 (119 pages of reprint from old catalogs)  
 Paperback \$6.95

**CAMBRIDGE, OHIO GLASS IN COLOR II**  
 Spiralbound \$5.95

by Harold and Judy Bennett

**1903 CAMBRIDGE GLASS CO. CATALOG REPRINT**  
 (106 page reprint of an original catalog)  
 Paperback \$7.50

Address your orders to:


**BOOKS**  
 National Cambridge Collectors, Inc.  
 P.O. Box 416  
 Cambridge, OH 43725

Please add \$1.00 (P & I) per order.

(Not required for Price Guide)

Ohio residents please add 6% state sales tax.

**DEALER DISCOUNTS AVAILABLE - PLEASE WRITE!**

Duncan & Miller Research Reveals a  Treasure Trove  
by George A. Fogg

Another "Buyin Chicago" quote, from Vol. XLIII, No. 23, July 9, 1931.

"Cambridge Glass Co.

"Sterling Silver Decorated Decanters Are Very Handsome

"A group of unusual numbers in black glass decorated with sterling silver is being shown in the Merchandise Mart display rooms of Cambridge Glass Company, of Cambridge, Ohio.

"Felix Wohlgemuth, in charge of the Chicago Office of the company, reports that the items have met with approval on the part of Chicago's leading retailers. The numbers include a clever and distinctive decanter with amusing 'S' and 'R' letters, representing, of course, 'Scotch' and 'Rye.' The decanters are manufactured in a triangular shape, with deep indentations on all three sides permitting a safe grip on the bottle and adding substantially to the effect of the design. Genuine sterling silver lines make this number one of the smartest of the season. The decanters are furnished with ground-in crystal stoppers.

"Among the other numbers are vases of striking modernistic design, as well as a separate group of silver-encrusted vases of handsome dignity. These latter pieces are carefully executed with a high degree of artistry."

"Black Glass" HUH??? Keep watching this column for color results. Thus ends Vol. XLIII (43). The interest here is to note, ground-in crystal stoppers. Do you mean to say I am trying to locate black (ebony) stoppers that don't exist?? Or do they?? This should give our authorities something to write about, for the CRYSTAL BALL.

---

THOUGHTS . . . . . continued from page 1

was stated on the original order blank and most of you sent the blank with your order, you tend to forget.

I do want to thank Charles and Marybelle Moorehead, Janice and Larry Hughes, Barbara Harbaugh, and Lynn and Lyle Welker, for volunteering to UPS your bookends to you while I am confined to bed. If it hadn't been for them, you probably wouldn't have gotten them until Spring. Also, thanks to Bill and Phyllis Smith for handling the sales at the November Quarterly meeting.

Although the "Christmas Shopping List" may not appear in current issues of the CRYSTAL BALL, most of the items are still available. You may refer to your past issues and order at anytime. As of right now, the only item completely sold out is the "Lady Leg" bookends. They went the first week they were advertised. If at all possible, purchase any of the items to help us reduce our inventory and turn it into cash that we can use for the Museum.

Well I had better end this article. Phyllis' Professor may not want to translate a long winded article!  
WILLARD

---

EDITOR'S NOTE: The latest word on our good friend Willard and his recovery from back surgery is that he is progressing -- but very slowly. He underwent spinal surgery in early November and tho he presents a "happy front," he is still experiencing considerable pain. Our Prayers and Best Wishes are with you Willard. PLEASE BE WELL SOON!

# PRISTINE

## PART II

by MARK A. NYE

Continuing from the November 1986 issue of the Cambridge CRYSTAL BALL . . . . . The general catalog issued by Cambridge in January 1940 devoted eight pages to the illustration of Pristine blanks and by 1942, six additional pages of Pristine blanks had been issued as supplements to this catalog.

All of the 1940 etchings (Blossom Time, Candlelight, Chantilly, Diane, Elaine, Portia, Rose Point and Wildflower) will be found on at least a few pieces of Pristine, such as bowls, plates, shrimp cocktails and mayonnaise sets. In addition to etchings, the gold decoration D/Astoria (450) was used on Pristine, but with a wider selection of blanks. Also at this time, Pristine stemware was being etched Rose Point and decorated with a gold edge.

During the early war years, Cambridge continued to promote the Pristine line and in fact brought out some new pieces, including vases #594, #595, #563, #557, #573, and #560. As late as November 1942, new items were being added to the Pristine line.

"Recently brought out by the Cambridge Glass Co. are these low, oblong pan bowls in the simple 'Pristine' design in heavy crystal, designed either for flower arrangements or for floating flowers. The 10" bowl is #445 and the 12" bowl is #466."

Then, all mention of the line ceased; apparently discontinued due to wartime shortages in labor and materials.

Even with its extensive list of pieces, during this time period, Pristine was never a complete dinnerware line as there never was a cup and saucer or dinner plate in the line. Nor was this a line noted for its color as the true Pristine line blanks were made only in crystal.

The period roughly covering the years 1942-1948 is one for which we have little documentation on what was happening at the Cambridge factory. New material, acquired as the result of the Imperial liquidation, is slowly becoming available in useable form. For the time being, however, the primary source of information remains trade journals published during those years.

Based on extant Cambridge catalogs and price lists, it is easy to reach the conclusion Pristine remained in the Cambridge line from its introduction until the final plant closing. It wasn't until the following was discovered that this conclusion was challenged.

"The 'Pristine' line of plain ware is once again complete, for the first time since the war. Items recently brought back include a full line of stemware, a three section fruit or salad bowl to retail at \$5, bud vases retailing at \$1.50, a cheese and cracker dish at \$3.50 retail and a three-part relish dish priced at \$3 retail. Finger bowls are also back again, retailing at \$9 dozen. "China, Glass & Lamps, August 1949.

Obviously, some or all of the line had been discontinued, probably beginning sometime in 1942. However, we still don't have the complete picture since the phrase "once again complete" implies the line wasn't completely discontinued, only reduced and that certain items remained available. If this was the case, we have yet to learn what portion of the Pristine line did remain in the Cambridge catalog during the war years and immediate post war years.

Four pages of the June 1949 Cambridge catalog were used to illustrate Pristine items while the price list that accompanied the catalog indicates a much larger line was available. In August 1949 seven supplemental catalog pages showing Pristine were issued and these included the stemware. Much of which was shown on these additional catalog pages had been previously detailed in the June 1949 price list.

Additional trade journal items that dealt with Pristine include the following two, taken from the July 1949 issue of Crockery and Glass.

"Additional news from Cambridge Glass Company is that they are bringing out a full line of 'Pristine' flatware and decorative pieces to meet the current style trend with a fine staple line of merchandise."

"Complete line of modern 'Pristine' stemware is being shown by Cambridge Glass Company."



The Cambridge Glass Company

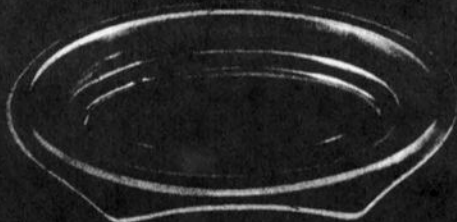


# PRISTINE

Patent Nos. 103,538, 104,573,  
103,578, 104,722



No. 187—2 pc. Grape Fruit  
or Salad Icer



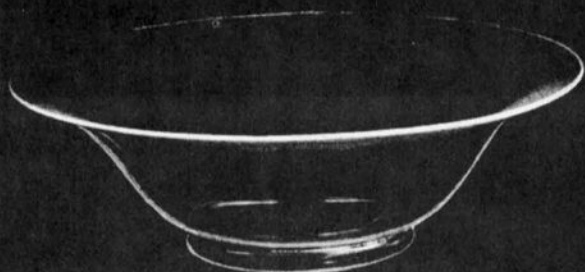
No. 163—8 in. Side Salad Plate



No. 73—20 oz. Jug  
Also  
No. 74—20 oz. Jug & Cover



No. 69—2 pc. Shrimp Cocktail Icer



No. 430—12 in. Belled Bowl  
Also  
No. 433—15 in. Belled Bowl



No. 402—4 1/2 in. Ivy Ball



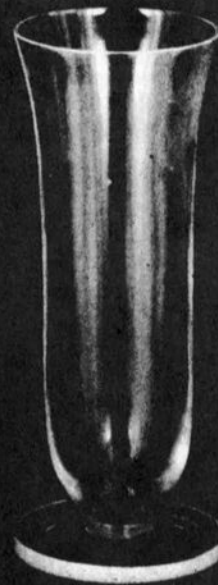
No. 422—4 in. Ivy Ball



No. 76—64 oz. Ftd. Jug



No. 71—86 oz. Jug



No. 612—11 in. Ftd. Vase



No. 90—28 oz.  
Tall Decanter  
Cut Stopper, Pol. In

Cambridge, Ohio - - - U. S. A.



# PRISTINE

Patent Nos. 103,538, 104,573,  
103,578, 104,722



No 489—1 3/4 in.  
Round Candlestick.



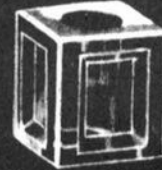
No 490—2 1/4 in.  
Round Candlestick.



No 491—3 1/2 in.  
Round Candlestick.



No 492—1 3/4 in.  
Square Candlestick.



No. 493—2 1/4 in.  
Square Candlestick.



No. 495—3 1/4 in.  
Square Candlestick.



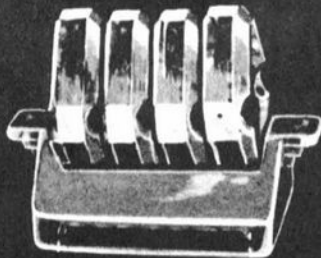
No 298—7 oz. Marmalade & Cover  
Also  
No 295 Mustard & Cover



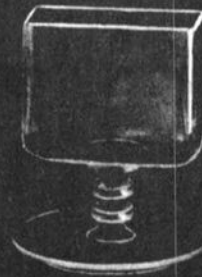
No 293—6 oz. Oil



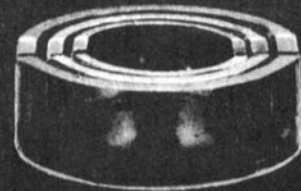
No 250 Ind Sugar & Cream



No 728—5 pc. Ash Tray Set



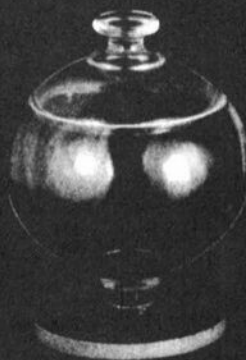
No 752 Cigarette Holder  
With Ash Tray Foot



No 710—3 in. Ash Tray  
No 714—4 in. Ash Tray  
No 715—5 in. Ash Tray  
(Each with 2 Cigarette  
or Cigar Rests)



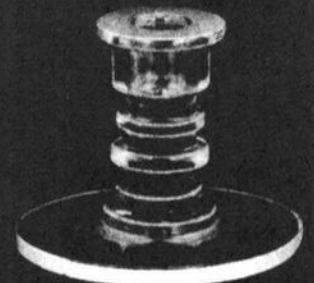
No 313—5 1/2 in.  
Candy Jar & Cover



No 305—4 in.  
Candy Jar & Cover



No 505—5 1/2 in. Candelabrum  
w/Bobeche & 9 No. 4 Prisms



No 488—4 in. Pristine



# The Cambridge Glass Company



## PRISTINE



308-7 in. Star Bowl



308-7 in.  
Star Mayonnaise & Ladle



308-7 in.  
Star Candy Box & Cover



221-8 1/2 in. 3 Part Bowl



244-5 Pc. Condiment Set  
1-3500/144 Tray  
2-293 Oil  
2-295 Mustard & Cover & Spoon



381-9 in. Oval Bowl



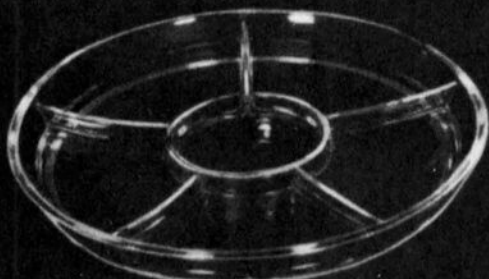
222-10 1/2 in. 3 Part Bowl



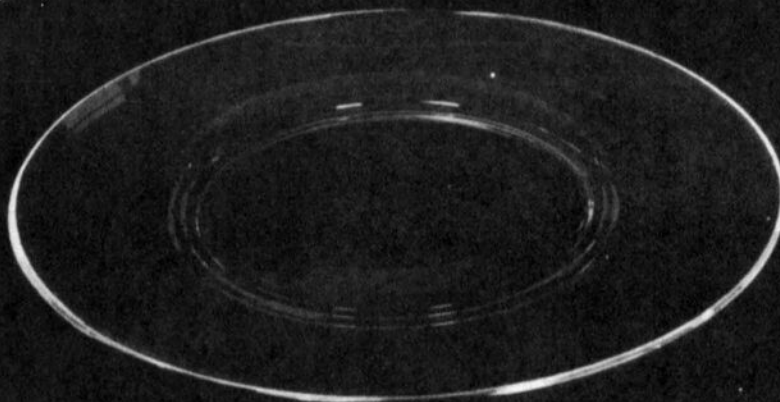
230-14 in. Blown Bowl



420-18 in. 4 Pc. Buffet Supper Set  
170-18 in. Plate  
419-12 in. 6 Part Relish  
533-Mayonnaise & Ladle



419-12 in. 6 Part Relish



170-18 in. Plate

# The Cambridge Glass Company

## ROCK CRYSTAL



Patented  
D-133198

Pristine 101—32 oz.  
Cocktail Shaker  
R. C. Eng. Moreno



Patented  
D-133198

Pristine 101—32 oz.  
Cocktail Shaker  
R. C. Eng. Lexington (758)



Patented  
D-133198

Pristine 101—32 oz.  
Cocktail Shaker  
R. C. Eng. Lexington (758)



Patented  
D-133198

Pristine 101—32 oz.  
Cocktail Shaker  
R. C. Eng. Chesterfield (952)



Pristine 100—32 oz.  
Beverage Jug  
or Martini Mixer  
R. C. Eng. Belfast (942)



R. C. Eng. Belfast (942)



Pristine 100—32 oz.  
Beverage Jug  
or Martini Mixer  
R. C. Eng. Chesterfield (952)



Pristine 100—32 oz.  
Beverage Jug  
or Martini Mixer  
R. C. Eng. Moreno



Pristine 100—32 oz.  
Beverage Jug  
or Martini Mixer  
R. C. Eng. Lexington (758)



Pristine 100—32 oz.  
Beverage Jug  
or Martini Mixer  
R. C. Eng. King Edward (821)

AUGUST 1, 1942

Cambridge, Ohio - - - U. S. A.



PRISTINE . . . . . continued from page 4

At this point, the stemware being shown was that introduced in the 1930s except in two instances. The stemmed comport being shown with the line was from the #3700 line, the true Pristine stemmed comport apparently a war victim. Recently discovered information indicates there were plans to modify Pristine stemware prior to its reintroduction in the summer of 1949. Comparing Pristine stemware shown on catalog pages issued in 1940 and 1949, the only apparent difference is in the 12 oz. and 5 oz. footed tumblers with the 1949 version of these two items having shorter stems.

The Pristine line as it was being sold in the Summer of 1949 included both pieces first designed and manufactured in the 1930s and newly conceived items. Many of the latter have the simplistic, clean lines associated with Pristine but do lack some of the unique styling of the late 1930s and early 1940s Pristine. (The reader is urged to compare the pieces shown on the catalog pages reprinted here and with Part I to those shown in the 1949-53 Cambridge catalog.) Sometime in the fall of 1948, a woodworker created models of what was to be the Pristine #254 pressed sugar and cream, for on December 29, 1948 the molds for these pieces were ordered and this order included the words "like wood model." While some new pieces did require new molds, other "new" Pristine items were accomplished by reworking existing molds. Four of these new pieces were described in trade journals in this manner:

"One of the Beautifully made pieces in the new Pristine line, this two-piece cake or sandwich server (P.424) consists of one 12 1/2" plate, setting into a pedestal base. Handmade, these new crystal pieces cleverly revolve and turnabout for easier serving."

"Four-piece Sunday night supper set can be sold as a unit or retailed piece by piece. Includes 18" torte dish, 3 compartment relish dish, a handsome footed sauce dish and ladle. Glass is flawless."

"Unique Relish Server (P.425) revolves on the Lazy Susan principle. Center dish holds sauce, partitions are for hors d'oeuvres. Three-piece item retails for \$5 and is patented. Cambridge Glass Company, Cambridge, Ohio."

"Seafood or shrimp server (P.436) handsomely designed and practical. Two piece item is patented; bowl is for ice, shrimp cup fits into well; retails at \$5."

The latter piece was quite easily converted to another use. The center shrimp cup had a peg which fit into a well in the bowl. One simply removed the shrimp cup and inserted a pegged vase and there was a 13" two-piece flower center.

Many pieces were designed for the Pristine line and most of these have some characteristic associated with the line. However, other pieces, such as the strawberry server discussed in Part I do not and visually would not be associated with the line. There is a third group of items in the Pristine line, those simply placed there "for lack of a better place." It is from this latter group that the line finally acquired, in 1949, a dinner plate as well as a cup and saucer, something it did not have in the earlier period. These pieces, shown in the June 1949 catalog, come from the much older Round Line and even retain the Round Line item numbers; #810 for the 9 1/2" dinner plate and #933 for the cup and saucer.

During the period 1949-54, Pristine blanks, as during the late 1930s and early 1940s, were used as the base for cuttings and etchings. Among the rock crystal cuttings from these years to be found on Pristine are: Harvest, Ivy, King Edward, Laurel Wreath, Silver Maple and Thistle.

When the etching Magnolia was brought out in early 1953, 22 of the 31 flatware and decorative items utilized Pristine blanks. Likewise, out of the 35 similar pieces etched Daffodil, another etching from the late years, 20 are Pristine blanks.

The gold decoration D/1063 "Talisman Rose" will be found on a very limited number of Pristine blanks while D/American Beauty, another gold decoration, will be found on at least nine Pristine blanks.

A remnant of a typed price list, distributed to Cambridge salesmen in January 1954, survives and it is on these pages that we find the first mention of the stemware line #1937. This line of stemware is pictured in the Cambridge catalog issued during the reopen period and is a modification of the original or #1936

continued on page 10

Pristine stemware line, and apparently was made using molds ordered in June 1949. Other than the ice tea and the juice, the new version of which was shown with the older style stemware in the summer of 1949, there is no indication this type of Pristine stemware was sold until early 1954.

The #1937 Line, consisting of six pieces (goblet, sherbet, cocktail or wine, cordial, ice tea and footed juice or claret), uses a shorter version of the original Pristine stem. This shortening of the stem required the removal of one or more rings and in fact, only the goblet has two free rings, i.e. rings not touching the bowl or foot, while all stemmed items from the 1936 line have at least two. The 1937 goblet, sherbet, cordial, footed ice tea and juice or claret utilized bowls from the first Pristine stemware while the cocktail or wine at 4 oz. used a bowl previously unused in the Pristine line. Both lines used the foot that was apparently designed in the 1930s for the Pristine line. Except thru special order, no Pristine stemware other than #1937 was available during the reopen period.

The #1936 line originally consisted of 13 stemmed and 8 non-stemmed items. At the time the Pristine line was reintroduced, only 10 stemmed items and no non-stemmed items remained. The 1936 line was not revived during the reopen period.

Pristine remained a major Cambridge line during the years of the reopen period, primarily as an undecorated pattern. A few blanks were used for engravings such as Rondo, Laurel Wreath, Harvest and Wedding Rings.

Of all the Cambridge lines, from a viewpoint of shape and styling, Pristine probably encompasses some of the more unique items made in the Morton Avenue factory. Examine very carefully the catalog pages reprinted here and in the November issue. Where else in the Cambridge line do you find an item similar to the 6" triangular cheese block or the oval lunch server! While there is no mistaking these pieces, it will take an astute Cambridge student to identify such things as the #714 ashtray or the tiny #571 vase, both of which would be extremely easy to overlook. These and many other Pristine pieces present a real challenge to the collector in as much as they

---

---

## — Classified —

---

---

**BUYING:** Caprice blue or Rosepoint by Cambridge. Rose or Orchid by Heisey. American, June, Fairfax, Versailles, Trojan by Fostoria. Also Depression Glass and all crystal or colored of that era. **Nadine Pankow**, 207 S. Oakwood, Willow Springs, IL 60480. 312/839-5231.

---

**NEEDED:** Cambridge Arms Parts. Epergne and Peg Vases, Pedestals, etc. **Penny Bernhardt**, 4463 Elm Avenue, Long Beach, CA 90807. 213/423-7218.

---

**FOR SALE:** Cambridge Glass. #638 Candlesticks, pink frosted, \$95 pair; #208 Caprice Cigarette Box & Cover, milk glass (some damage to one end of box lip, cover mint) \$40; #92 Mt. Vernon Ice Bucket \$30; Pristine 6 oz. tall Sherbets Neo-Classic cut, (8) each \$9; Calla Lily Candlesticks, green, \$45 pair; 10" Bud Vase, etched Rosepoint \$75; Pouter Pigeon Bookends \$200 pair; #18 Everglade (Swan) 14 1/2" Bowl, amber, \$125; gold encrusted Elaine etched Console Set (#3500/17 12" Bowl, and a pair of #3500/95 Candlesticks), set \$225. Duncan Miller Punch Set, crystal w/red handles, Bowl, 12 Cups, Ladle (smoothed chip on edge of Ladle), set \$125. Postage Extra. Return Privileges. **Sue Cameron**, 3854 Wosley Drive, Fort Worth, TX 76133. 817/292-3678.

---

**FOR SALE:** Green Georgian Basket w/crystal handle \$32; Top Hat Cigarette Holder w/ruby flashing on rim \$13; 4" Sea Shell covered w/gold flowers \$13; #2631 Marjorie Knife Rest \$17; 3 1/2" Chantilly Coaster \$10. Frosted Canape Set w/red enamel trim on Plate & Cup w/red enamel Rider & Horse on Cup. #3500 Elaine Wines (2) \$10 ea. Amber Pencil Dog w/label \$11.50. Crystal Bird w/NPR \$10. Postage & Insurance Extra. **Mike Tippens**, 197-49 Wickshire, Jasper, TX 75951. 409/384-5956.

---

are infrequently seen today, and positive identification as a Cambridge Pristine item, in some instances can be a problem.

HAPPY NEW YEAR  
to you and yours. May 1987 bring Peace and  
Happiness to one and all!



## THE MIAMI DEPRESSION ERA GLASS SHOW

Saturday,  
February 7th, 1987  
from 10:00 am to 5:00 pm

Sunday,  
February 8th, 1987  
from 12:00 noon to 5:00 pm

One of the most important  
and popular antiques events  
in Florida

Featuring  
CAMBRIDGE, FOSTORIA, HEISEY,  
ART DECO AND OTHER  
DEPRESSION ERA GLASSWARE  
AS WELL AS CHINA AND POTTERY  
OF THE TIMES.

**North Miami  
National Guard Armory**  
13250 N.E. 8th Avenue  
North Miami, Florida

**SPECIAL GUEST**  
Nora Koch, editor, the DAZE

**DIRECTIONS:**  
From I-95, exit at 135th Street and  
go east to N.E. 8th Avenue.  
Turn right on N.E. 8th Avenue  
and proceed to Armory.

Sponsored by the  
South Florida  
Depression Glass Club

**INFORMATION:**  
(305) 448-5568

A  
gathering of  
select  
dealers  
from 15  
states  
with quality  
items to  
intrigue the  
beginner,  
service the  
collector,  
and cater to  
the  
connoisseur

snack bar  
door prize  
American  
glassware  
& crystal  
matching  
and  
identification

Admission  
\$2.50  
(good both  
days)

**PLEASE NOTE:** Last month we listed an incorrect telephone number in this ad and we apologize for the inconvenience it has caused RAY and BOB as well as those of you who may have tried to reach them. We are running an UPDATED version of their ad this month with the CORRECT PHONE NUMBER LISTED. Several changes have been made, so PLEASE READ THEIR AD, and GIVE THEM A CALL!

## Ray Talbot & Bob Riley

P.O. BOX 4180, SPRINGFIELD, MA 01101

PHONE: 413/737-0884

(8 AM to 11 AM and 8 PM to 11 PM - EST)

### CARMEN

#1066 7" Ivy Ball .....\$ 45  
 #759 7" Plate ..... 10  
 #647 2-lite Candlestick ..... 40  
 Georgian low Sherbet ..... 15  
 Georgian tall Sherbet ..... 15

### EBONY

#16 7½" Bowl, signed, minor wear....\$ 10  
 #3400/48 13" crimped Bowl ..... 20  
 #97 3-compt. covered Candy w/pearl  
 lustre & seaweed decor. (gold  
 worn on knob) ..... 30

### CRYSTAL

Caprice #38 Sugar .....\$ 5  
 Chelsea 7" low ftd. Comport ..... 12  
 #647 2-lite Candlesticks (pr.) ..... 20  
 #3 5" Star Candlesticks (pr.) ..... 15  
 Leaf line #1211 double Candelabrum . 40

### DARK GREEN

#3400 Squat Juice Pitcher .....\$ 30  
 P499 6½" Calla Lily Candlesticks ... 50  
 #1402/100 6" Comport (forest) ..... 20  
 #1550 Sweet Potato Vase (forest) ... 15  
 SS33 4" Ashtray (forest) ..... 12

### MANDARIN GOLD

SS31 8" oval Dish .....\$ 35  
 SS33 4" Ashtray ..... 12  
 #1057½, 14 oz. Weiss Beer ..... 20

### CROWN TUSCAN

#1236 7" Ivy Ball .....\$ 45  
 SS31 8" oval Dish ..... 37  
 SS33 4" Ashtray (4) ea. .... 15  
 SS21 6" ftd. Candy & cover ..... 50  
 SS17 9" 3 ftd. Bowl, signed ..... 65

### AMBER

#3500/49 5" Nappy .....\$ 7  
 #3500/55 6" Basket ..... 8  
 #3500/68 2-compt. 5½" Relish ..... 7  
 #3500/69 3-compt. 6½" Relish,  
 w/Farber base ..... 9  
 #3500/70 4-compt. 7½" Relish,  
 w/Farber base ..... 9  
 #3500/652 11" Celery, signed and  
 etched Diane ..... 40  
 #3126 10 oz. ftd. Tumbler ..... 9

### AMBER continued

#3126 7 oz. low Sherbet (3) ea. ....\$ 7  
 #652 11" Celery, signed ..... 10  
 #397 5-compt. Celery/Relish Tray ... 20  
 Wetherford #102 12" Celery w/line  
 etch ..... 12  
 #676 11½" Bowl, signed ..... 10  
 #16 7½" Bowl, signed ..... 8  
 #1550 Sweet Potato Vase ..... 15  
 #3400/68 Sugar, signed ..... 7  
 #47 6½" Comport ..... 8  
 #87 ½ lb. Candy, optic ..... 10  
 #88 1 lb. Candy, optic ..... 12  
 #1236 Ivy Ball (minor lip rough) ... 30  
 #1239 14" Vase ..... 45  
 #925 After Dinner Cups & Saucers,  
 set of 4, signed ..... 60  
 Farber Nude Stem 5½" Comport ..... 25

### ROUND DINNERWARE SET:

#933 cups & saucers (9 sets & 3 extra saucers); #668 bread & butter plates (16); #556 8" plates (17); #922 cream soups w/underplates (5 sets & 1 extra soup); #928 5" fruit dish (2); and #138 sugar (2) and cream (1). Many pieces are marked. Set ..... 160

### DECAGON,

#867 Cream ..... 8  
 #842 12" Bowl, Gloria etch, signed . 40  
 #870 11" Sandwich Server ..... 15  
 #646 5" Candlesticks (pair) ..... 25  
 #627 Candlesticks (pair) ..... 20  
 #984 10" Bowl (mold bruise on hld.) 15  
 #972 11" Plate ..... 20  
 #977 11" Basket, signed ..... 25

### DECAGON DINNERWARE SET

Service for 6: #865 cups & saucers; #809 bread & butter plates; #815 7½" plates; #597 8½" plates; #1096 cream & sugar; and #870 server. Most pieces signed. Set ..... 140

### AMETHYST

#3400/38 80 oz. Ball Jug .....\$ 60  
 #1236 7" Ivy Ball ..... 32

continued on next page

# Ray Talbot & Bob Riley

P.O. BOX 4180, SPRINGFIELD, MA 01101

PHONE: 413/737-0884

(8 AM to 11 AM and 8 PM to 11 PM - EST)

## ROYAL BLUE

#157 crystal Marmalade w/blue ft....\$ 40  
 #3400/144 Cigarette Holder, w/  
 place card hldr. & ashtray ft.. 35

## LIGHT BLUE

C122 8" 3-part Relish .....\$ 30  
 C165 6" 3 ftd. Candy w/lid, Alpine.. 65  
 #3400/1093 2-pt. hdd. Relish ..... 40  
 #3 5" Star Candlesticks ..... 35

## LIGHT EMERALD GREEN

#847 Ice Tub, signed .....\$ 20  
 #1009 6" Springtime Vase ..... 48  
 #254 5½" Comport (2) ea. .... 11  
 #1005 6½" Vase (stone on side) .... 15  
 #387 2½" Ashtray - signed ..... 5  
 #638 3-lite Candelabra ..... 25  
 #1079 15" oval Decagon platter,  
 signed (slight wear) ..... 18  
 #3400/8 11½" 2-hdd. Sandwich  
 Plate, signed (slight wear).... 8  
 #441 10½" low Comport, signed..... 18  
 #447 6" low Comport, flared,  
 signed ..... 8  
 #3400/67 12" Celery/Relish,  
 w/floral cutting ..... 20  
 #611 2½" ind. Almond (2) ea..... 12  
 #1095 3-pc. Sugar & Cream set ..... 25  
 #488 9½" Tray ..... 10  
 #620 3-pc. Sugar & Cream Set,  
 signed ..... 20

#1082 9" Decagon Pickle, (2) ea..... 10  
 #749 6½" Decagon BonBon ..... 5  
 #758 5½" Decagon BonBon ..... 5  
 #759 7" Decagon Plate, signed ..... 5  
 #3400/90 6" 2-pt. Relish, signed ... 8  
 #3400/52 5½" Butter, no lid..... 5  
 #922 Cream Soup/Saucer (4 sets)..... 20

## ROUND DINNERWARE Service for 9:

#933 cups & saucers; #668  
 bread & butters; #556 8"  
 plates; #3400/1177 9" dinner  
 plates; and #934 2-hdd. soups  
 w/underplates. (set) ..... 175

## MISCELLANEOUS

Gold Krystal Georgian Sherbet .....\$ 10  
 P737 Ebon Canoe Ashtray ..... 15  
 Primrose #47 6½" low Comport..... 20  
 Helio #46 8" low Comport ..... 35  
 Jade 7½" flared Comport ..... 30

## MISCELLANEOUS continued

Jade 9" Twist Candlesticks, pair ...\$ 40  
 Coral Mt. Vernon #4 ind. Cream  
 & Sugar ..... 40  
 Cobalt 14 panel Bowl, signed ..... 20  
 Mulberry #441 10½" low Comport..... 15  
 Mulberry #531 7½" tall Comport..... 20  
 SS34 3" Ashtray, Pistachio (4) ea. . 3  
 Pistachio #1506/2 5" Novelty  
 Basket, signed ..... 20  
 Pistachio #1506/4 5" Novelty  
 Basket, signed ..... 30

## NEARCUT

#2631 Marjorie Punch Bowl w/12 cups  
 signed (slight mold bruise on  
 rim), Set .....\$150  
 #2660 Wheat Sheaf covered Cracker .. 40  
 #2766 Thistle Cruet, signed (2) ea.. 25  
 #2699 Buzz Saw 11" ftd. Plate ..... 12

MINT UNLESS SPECIFIED!

POSTAGE & INSURANCE EXTRA!

PHONE: 413/737-0884

8 AM to 11 AM and 8 PM to 11 PM - EST

## SHOWCASE ANTIQUE and GIFT SHOP

EVELYN M. ALLEN

1263 HEBRON RD (Rt. 79), HEATH, OH 43056  
 614/522-1785

HOURS: 12:30 to 5 PM DAILY  
 (Closed Monday)

BUYING and SELLING CAMBRIDGE HEISEY  
 FOSTORIA FENTON & OTHER AMERICAN  
 MADE GLASS & POTTERY  
 NEW GIFT ITEMS

Other hours by Appointment Home Phone 614 522-1635

*Wondrous is the strength of cheer-  
 fulness, and its power of endurance.  
 The cheerful man will do more in the  
 same time, will do it better, and will  
 persevere in it longer, than the sad  
 and sullen.*

— Thomas Carlyle

**COLUMBUS ANTIQUE  
FLEA MARKET  
(ANTIQUES & COLLECTIBLES)**

Ohio State Fairgrounds - Lausche Building  
Off I-71 Exit 17th Avenue - Columbus, Ohio

**JANUARY 11th**

Sunday Only - 7 A.M. to 4 P.M.  
Show Admission \$1.50 - Under 12 Free  
150 QUALITY DEALERS

SELLING: Advertising Art Deco, books, Cambridge, clocks, coins, collectibles, Depression glass, dolls, Fiesta, fine early furniture, Heisey, jewelry, lamps, oak furniture, post cards, pottery, good primitives, tools and print shop items



4214 North High Street, Columbus, Ohio 43214  
(614) 267-8163 (614) 263-6830 (614) 885-2352

NEXT SHOW: February 22, 1987

**The DAZE**

★ SPECIAL OFFER  
to NCC friends  
\$2. off the 1 year  
subscription price,  
when on this form  
or copy of.

The Original, National monthly newspaper dedicated to the buying, selling & collecting of colored glassware and china including Depression Glass and the Elegant Glass (Cambridge, Heisey, Fostoria etc.). We educate and inform you each month with feature articles by top notch columnists, readers "finds", club happenings, show news and a multitude of ads. Find those missing pieces to your 30s, 40s or 50s pattern. Can't identify it? Perhaps we can help. "Keep up with what's happening with a subscription to the DAZE. Buy, sell or trade from the convenience of your easy chair.

Name \_\_\_\_\_ Street \_\_\_\_\_

City \_\_\_\_\_ State \_\_\_\_\_ Zip \_\_\_\_\_

1 yr. \$15.00  2 yrs. \$29.00  \$1.75 single current copy  
 Check enclosed  MasterCard  Visa

Exp. date \_\_\_\_\_ Card No. \_\_\_\_\_

Signature \_\_\_\_\_

Orders to D.G.D., Box 57NC, Otisville, MI 48463

Please allow 30 days for your first issue— Canadian subscribers, add \$1. per year and subscribe by charge card only! This Special Offer May Not Be Combined With Other Special Offers

WELCOME TO GLASS COUNTRY!

I-70

STOP AND SEE US

ROUTE 40

WE FEATURE GLASSWARE OF:  
CAMBRIDGE, HEISEY, FENTON & FOSTORIA

Plus a full line of Art Pottery and a General line of Quality Antiques

*Stage Coach  
Antique Mall*

RT. 40, ONE-HALF MILE WEST OF I-70 NORWICH EXIT #184  
MANY DEALERS-WIDE SELECTION-PLENTY PARKING

DORIS AND ROY ISAACS  
BUY AND SELL  
614-872-3720



7525 EAST PIKE  
NORWICH, OHIO 43787

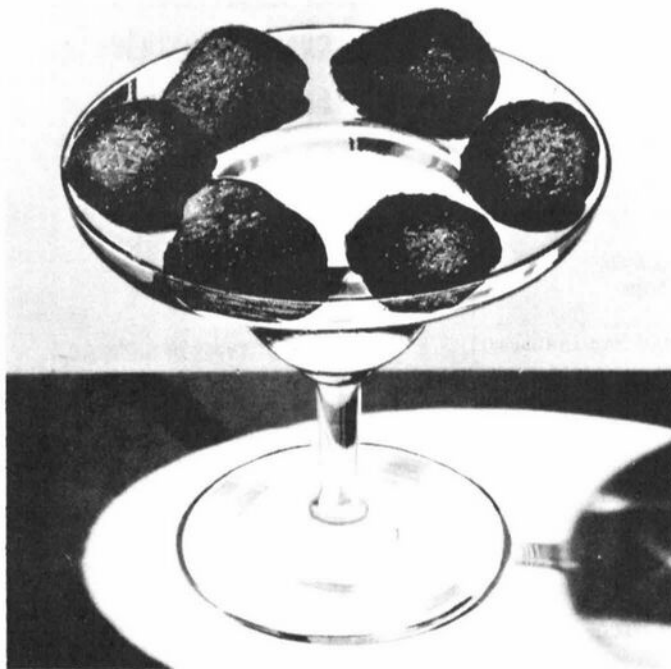
MON THRU SAT 10-5:30 SUN 12-5:30  
SUMMER EVENING HOURS BY CHANCE

MANY DEALERS - PLENTY OF PARKING

# DEALERS DIRECTORY

When Writing To  
Dealers Please  
Include SASE

|  |  |  |
|--|--|--|
| <p><b>SPECIALIZE IN CAMBRIDGE GLASS &amp; ANTIQUES</b><br/><b>DOYLE L. BYINGTON</b><br/>58 Buena Vista Ter., San Francisco, CA 94117<br/>415/621-1854<br/><br/>Shows: Mail-Order - Buy &amp; Sell - By Appointment</p>   |  | <p><b>THE MUTED SWAN ANTIQUES</b><br/>5486 Peachtree Rd. Chamblee, GA 30341<br/>Heart of Chamblee Antique Row<br/>Specializing in Cambridge, Heisey and Fostoria<br/>Bill &amp; Pat Miller 404-451-7620</p>                                      |
| <p><b>MILBRA'S MATCHING SERVICE</b><br/>P.O. Box 363, Rio Vista, TX 76093<br/><b>Milbra Long 817 / 645-6066</b><br/>FOSTORIA * CAMBRIDGE * HEISEY * DEPRESSION<br/>ERA GLASSWARE<br/><b>BUY and SELL</b></p>   | <p><b>BENICIA ANTIQUE SHOP</b><br/>305 First Street<br/>Benicia, California 94510<br/><br/><b>OPEN 11 AM - 5 PM</b><br/>Closed Monday<br/><br/>Z. E. LOPES 707-745-0978</p>                                  | <p><b>CHARLES MIKULIK</b><br/>Box 416<br/>Elizabeth, N.J. 07207<br/><br/>— <b>COLLECTOR</b> —<br/>Always paying good prices for<br/><b>CAMBRIDGE CAPRICE</b><br/>in all colors<br/>201-688-1144<br/><br/><b>CARRY MOST TYPES OF ANTIQUES</b></p> |
| <p><b>ANDREJCAK'S ANTIQUES</b><br/>14533 Bayes Ave.<br/>Lakewood, Ohio 44107<br/>Joe &amp; Karen Andrejcek 216-226-3417<br/><b>SHOWS ONLY — CAMBRIDGE — FENTON — CHINA</b></p>   | <p><b>VISIT HISTORIC BENICIA</b><br/>and its 28 shops<br/>Off Interstate #80 .....<br/>..... North of San Francisco</p>  |  |
| <p><b>BOGART'S ANTIQUES</b><br/>Stagecoach Mall, Building #2<br/>Norwich, OH 43767<br/>*****<br/><b>Jack and Sharon Bogart</b><br/>614/826-7439 and 614/872-3514<br/>*****<br/>BUY - SELL - APPRAISE - REFINISH<br/>SEAT WEAVING - CLOCK REPAIR<br/>COPPER &amp; BRASS POLISHING<br/><b>GENERAL LINE CAMBRIDGE GLASS</b></p> | <p><b>RICHARD BENNETT</b><br/>64183 Warne Drive, Cambridge, OH 43725<br/>Phone: 614 / 432-4483<br/>SPECIALIZING IN CAMBRIDGE GLASS<br/>Stagecoach Mall - Bldg. 3 - Norwich, OH</p>                           | <p><b>BERKELEY ANTIQUES</b><br/>69 Berkeley St., Boston, MA 02116<br/><b>OPEN: Monday thru Saturday 11 AM to 5 PM</b><br/>GEORGE &amp; FRANK 617/426-1048<br/><b>DUNCAN, CAMBRIDGE, HEISEY, GENERAL LINE</b></p>                                 |
| <p><b>THE GLASS CUPBOARD</b><br/>39 Shire Oaks Drive<br/>Pittsford, New York 14534<br/>Marcia Ellis Cambridge, Duncan Miller<br/>(716) 586-7596 Shows, Mail Order, Appt.</p>   | <p><b>D &amp; D ANTIQUES</b><br/>Columbus, Ohio<br/><br/>DICK SLIFKO <b>SHOWS ONLY</b></p>   | <p><b>THE GLASS MENAGERIE</b><br/>212 Market Street<br/>Denton, Maryland 21629<br/>Barbara &amp; Bill Danels 301/822-8794<br/><b>SPECIALIZING IN GLASSWARE OF THE DEPRESSION ERA</b></p>   |
| <p><b>JUDY'S ANTIQUES</b><br/>Judy Bennett<br/>422 S. Ninth Street (Corner of Jefferson)<br/>Cambridge, Ohio 43725<br/><b>BUYING Ph. 614-432-5855 SELLING</b><br/><i>Cambridge Glass my Specialty</i></p>  | <p><b>"Happiness Is" - The Stultzs</b><br/>3106 Warren Court, Glen Allen, VA 23060<br/>Shows and Mail (Richmond Area) 804/262-1273<br/>GLASS CIRCA 1890-1960</p>   | <p><b>PEG AND DALE GOTSCHALL</b><br/>Antiques, Cambridge and Other Quality Glass<br/>833 N. 6th St., Cambridge, Ohio 43725<br/>Phone 614/432-5529<br/>Stagecoach Mall — Bldg. 2 — Norwich, Ohio</p>  |
| <p><b>GREEN ACRES FARM</b><br/>2678 Hazelton Etna Rd., Pataskala, OH 43062<br/>(State Route 310 North)<br/>Sat. &amp; Sun. 1-7 PM 614/927-1882<br/><b>Antiques, Crystal Glass and Collectibles</b></p>   | <p><b>THE HITCHING POST</b><br/>7467 S. R. 88<br/>Ravenna, OH 44266<br/>Ph. 216-296-3686 D. McDaniel<br/><b>CAMBRIDGE — HEISEY — GENERAL LINE</b></p>  | <p><b>MOSTLY HEISEY</b><br/>16 Clayton Place, Albany, NY 12209<br/>Rhoda Curley 518 / 482-6272<br/><b>SHOP and MAIL ORDER</b></p>  |
| <p><b>BUY-SELL 513/390-3617</b><br/><b>Taste of Honey</b><br/>Glassware—Collectibles<br/>CLARKE &amp; CAROLE WEST 3433 Turner Dr.<br/>Springfield, OH 45504</p>  | <p><b>1886 HOUSE</b><br/>East Schodack, N.Y. 12063<br/><b>MAIL and SHOWS</b><br/>Laurie Cruise 518-477-5895<br/><b>CAMBRIDGE - NORITAKE - AZALEA - D.G.</b></p>  | <p><b>L &amp; M ANTIQUES</b><br/>1331 S.E. 4th Ave., Pompano Beach, FL 33060<br/>Lydia &amp; Cliff McNeil 305/943-2274<br/><b>CAMBRIDGE &amp; FOSTORIA OUR SPECIALTY</b><br/>Buy &amp; Sell Shows Only</p>                                       |
| <p><b>REMEMBRANCES</b><br/>7597 Daphne Dr., No. Syracuse, NY 13212<br/>Shirley S. Ladouceur 315 / 458-5297<br/>ANTIQUES and COLLECTIBLES<br/><b>MAIL ORDER SHOWS APPOINTMENTS</b></p>  | <p><b>MARGARET LANE ANTIQUES</b><br/>2 E. Main St., New Concord, OH 43762<br/>Lynn Welker 614 826-4418<br/><b>CAMBRIDGE GLASS MATCHING SERVICE</b><br/>Hours Mon.-Fri. 1-5 PM or by Appointment</p>          | <p><b>THE GLASS URN</b><br/>456 West Main Street, Suite G.<br/>Mesa, AZ 85201 602 / 833-2702<br/>Mail Order Shows Open Shop<br/><b>CAMBRIDGE, FOSTORIA, HEISEY, ETC.</b></p>   |
| <p><b>AL STEELE</b><br/>Westerville, Ohio<br/>614-882-6483 or 614-882-7124<br/>Mail Orders and Shows Only<br/><b>HEISEY — CAMBRIDGE — PATTERN GLASS</b></p>  | <p><b>SKYLINE DRIVE ANTIQUES</b><br/>5432 Skyline Drive, Cambridge, OH 43725<br/>Drew &amp; Donna Davis 614 / 432-2621<br/><b>SPECIALIZING IN CAMBRIDGE GLASS!</b><br/>Shows Mail Order Matching Service</p> |  |



### STRAWBERRY SERVICE

Clear Crystal blown glass. Berries on the rim and powdered sugar in the center for a practical and unusual Service.



### SHRIMP COCKTAIL SERVER

Clear Crystal blown glass. A ledge is provided for the Shrimp and a well in the center for the Sauce. New and different.

#### FEBRUARY QUARTERLY MEETING

FRIDAY - FEBRUARY 27, 1987 - 8 PM  
in the  
Auction Room at Shenandoah Inn

PROGRAM WILL INCLUDE  
"Show & Tell"  
and  
Preview of Auction Glass

#### ALL-CAMBRIDGE GLASS AUCTION

SATURDAY - FEBRUARY 28, 1987  
Preview 9:30 AM - Auction 10:30 AM

SHENANDOAH INN  
Old Washington, Ohio

Your Auction List is enclosed in this issue of the CRSYTAL BALL. Bring it with you and plan to attend.

National Cambridge Collectors, Inc.  
P. O. Box 416 Cambridge, Ohio 43725

FIRST-CLASS MAIL  
U.S. POSTAGE  
**PAID**  
So. Vienna, Ohio  
45369  
Permit No. 15

**FIRST CLASS MAIL**



JANUARY

1987



NATIONAL CAMBRIDGE COLLECTORS, Inc.  
**AUCTION INFORMATION**

AUCTIONEER: CRAIG CONNELLY

ADMISSION: \$1.00

LOCATION: Shenandoah Inn  
Intersection I70 & Route 285  
Old Washington, Ohio (6 miles East of Cambridge)

TIME: February 28, 1987 PREVIEW: 9:30 AM AUCTION: 10:30 AM

All glass guaranteed to be Cambridge. The auction committee has checked all glass to be auctioned. All pieces should be examined immediately and returned before five items are sold if the article is not as represented. Any damage is indicated in this Catalog. If no color is indicated, the item is clear.

TERMS: Cash or check with proper identification, day of sale. All sales are subject to 6% Ohio Sales Tax. Dealers may sign an exemption form if the items purchased are for resale, in which case, no tax will be charged.

CATALOG INSTRUCTIONS: Number references may be found in the National Cambridge Collectors publications or Welker reprints. The number in parenthesis ( ) at the end of each listing indicates the amount of items to be sold. Bidding will be by the piece if a number occurs at the end or as a lot if pair, set or lot is indicated. You may buy 1 piece of any items if a number appears at the end of an item description.

MAIL BIDS: All bids must be accompanied by a check for each lot. Bids will be executed secretly, and the bidder will pay only the final auction price. Please include a stamped, self-addressed envelope with bids. You will be notified if you were the successful bidder. If not, Your check(s) will be returned and the final selling price will be noted. Ohio residents, please include 6% sales tax or your Vendor's #. If you wish to have the pieces shipped to you, please include a separate check for adequate postage. All pieces will be shipped via UPS the week immediately following the auction. Please include your UPS delivery address. All items are sold in perfect condition unless noted, and you may expect to receive them that way if you mail bid. All items will be carefully checked again before they are shipped. For additional information: Phone (614) 826-7414.

Bids must be received by February 27 to be eligible. Mail bids to: Lynn Welker 2 East Main St. New Concord, Ohio 43762. Make checks payable to: National Cambridge Collectors, Inc.

Motel Reservations: Phone (614) 489-5511. Mention N.C.C. for reasonable rates. Food available on the premises.

QUARTERLY MEETING: Friday, February 27 at 8:00 PM. An informative meeting will be presented as well as a preview of the auction glass. Bring a friend and your Show and Tell glass to the meeting.

Additional auction catalogs: \$1.00 postpaid or at the door.

1. Yardley opaque cosmetic jar (chip under lid of 1) (2)
2. #3035 Heatherbloom 6 oz. tall sherbets, crystal stem/foot (4)
3. #1571 Sanitary cheese preserver & lid, square
4. #1545 6" 3 lite candlesticks (pair)
5. #1505 Vrystal 6" flower bar
6. #680 Amber dresser compact & lid, unknown floral cutting
7. #847 Peachblo Decagon ice tub & handle, signed
8. #10 Crown Tuscan Seashell 5" Nude comport, enamel Gardenia & gold
9. #3400 Emeard sugar & creamer, Farber lid & holders (pair)
10. #1138 Crystal 8½" Seagull figure flower holder
11. #34 Seashell 3" ashtrays: Moonlight, Mocha, Pistachio, Gold (1 each)(4)
12. Amber Farber Nude comport, tiny chip on edge
13. #13 Everglades 13" bowl, tulips
14. #3400/141 Crystal Doulton 80 oz. pitcher, high handle
15. #27 Willow Blue Everglades 7½" bowl
16. #5 Mortar and Pestle, 16 oz., marked C
17. #5 Azurite 7¼" bowl, gold encrusted rim
18. #749 Ebony Decagon 6¼" 2 hdd bonbon, Etch #725 & gold trim, signed
19. #870 Ebony Decagon 11" center hdd sandwich tray
20. #1201 Carmen Georgian 2½ oz. tumbler
21. #1201 Peachblo Georgian 2½ oz. tumbler
22. #1201 Gold Krystal Georgian 2½ oz. tumbler, signed
23. #317 Carmen Georgian 5 oz. tumbler
24. #317 Moonlight Blue Georgian 5 oz. tumbler
25. #319 Carmen Georgian 9 oz. tumbler
26. #319 Moonlight Blue Georgian 9 oz. tumblers (7)
27. #319 Crystal Georgian 9 oz. tumbler
28. #319 Heatherbloom Georgian 9 oz. tumbler
29. #319 Carmen Georgian 12 oz. tumbler
30. #319 Amethyst Georgian 12 oz. tumbler
31. #319/B/2 Peachblo Georgian basket, crystal handle, original label
32. #319C Carmen Georgian candy box & cover
33. #3175 Carmen Georgian sherbets (2)
34. #3175 Smoke Georgian sherbet
35. #3175 Moonlight Blue Georgian sherbet
36. #3175 Amber Georgian sherbet
37. #316 Moonlight Blue Georgian sundae
38. #316 Heatherbloom Georgian sundae
39. #3400/119 Amber 12 oz. decanter & (4) #3400/1341 amber cordials (Set)
40. #88 Amber ½ pound candy jar & cover, wide optic, signed
41. #1506/3 Peachblo 4½" novelty basket, signed
42. #1044 Ebony 10½" swan, Style I, signed
43. #45 Amber 9½" low ftd. comport, Willow Scene etching, unusual
44. #12 Amber Everglades 12" bowl, tulips
45. #1301 Crown Tuscan 10" ftd. vase, gold Lace design, acid signed
46. #3500 Royal Blue 2½ oz. wine, gold silk screen urn & flowers, rare
47. #514 Crystal Eagle figure flower holder, rare
48. Primrose atomizers, gold/black band trim (1 missing bulb) (2)
49. #518 Peachblo Aero Optic 72 oz. ball jug
50. #407 Light Emerald Aero Optic 12" vase
51. #518 Peachblo 8½" Draped Lady figure flower holder
52. #135 Helio 10" cheese & crackers, 1" gold encr border on plate (Set)
53. #1070 Ebony 36 oz. pinch decanter, Sterling Rye and sterling trim
54. #1541 28 oz. square decanter, etch Rye, sombrero hat stopper
55. #163 (Martha) 8½" asparagus plates (2)
56. #1236 Amber 7½" ivy ball, crystal ring stem/foot
57. #3121/1 Amber 5½" comport, crystal stem/foot
58. #56 Light Emerald satin Everglades 13" 3 toed plate, cupped
59. #3500/90 Carmen Gadroon 8" ftd. vase, urn shape, unusual
60. #3500/90 Amber cigarette holder with crystal stem/ashtray foot
61. #1337 Amethyst cigarette holder with crystal stem/ashtray foot
62. #1337 Rock crystal cut cigarette holder with ashtray foot
63. #1066 Oval cigarette holder with ashtray foot, monogram ABV
64. Crystal "Top Hat" cigarette holder
65. Carmen "Top Hat" ashtray
66. #1956/2 Smoke 10" ashtray with peg
67. #1715 Emerald ashtray (inverts into candlestick) (pair)
68. #728 5 pc. ashtray set, crystal holder: Pink, Moonlight, Pist, Mocha (Set)

- 69. #518 Peachblo 8½" Draped Lady figure flower holder with Peachblo  
12" square base, candlecups at 4 corners (Set)
- 70. #15 Helio 8½" bowl & 9½" blown candlesticks, Platinum Laurel Wreath (Set)
- 71. #1309 Carmen 5" vase
- 72. Mandarin Gold Modern cand box & cover
- 73. #3011 Emerald (dark) Nude brandies (5)
- 74. #78 Primrose 6" 3 compartment candy box & cover
- 75. Rubina Block Optic 10¼" vase, NCC Color, Plate 18, Row 1, #5
- 76. #49 Royal Blue 9½" cornucopia vase, crystal shell foot
- 77. #3400/68 Heatherbloom sugar & creamer, signed
- 78. A56 Today 3 oz. cocktails, original labels, (4)
- 79. #702 Crown Tuscan 3" miniature cornucopias (2)
- 80. #3011 Crown Tuscan Nude ivy ball, hard to find
- 81. #394 Crown Tuscan Pristine 11" oval bowl
- 82. #W88 Milkglass Cascade 5" candlesticks (pair)
- 83. #W126 Milkglass Everglades 5" vase
- 84. #497 Sunset Gyro Optic 16 oz. ranch tumblers, super color, rare (2)
- 85. #935 Peachblo etched Tulip 64 oz. oval water pitcher
- 86. #693/300 Satin 2 pc. canape set, red enamel Hunt Scene & trim
- 87. #3011 Forest Green Nude 4½ oz. claret
- 88. Windsor Blue Daisy & Button hat, NCC Color, Pl #39, Row 4, #1, rare
- 89. #673 Light Emerald 15" flip bowl, Etch #732, signed
- 90. #29 Azurite 11½" bowl, gold Laurel border, acid signed
- 91. #14 Jade 10" bowl & Twist candlesticks (chip under 1) (Set)
- 92. #3500/57 Crown Tuscan 8" 3 part candy box & cover
- 93. Helio 4" ball ivy vase, unusual
- 94. #2760 Daisy Nearcut basket (cracked)
- 95. #2693 Nearcut signed tumblers, gold trim (2)
- 96. #2699 Green Carnival Buzz Saw Nearcut tumbler
- 97. #2759 3 prong toy candlesticks (2)
- 98. #2798 Peachblo 3" toy candlesticks, rare (pair)
- 99. Sweetheart Nearcut signed child's creamer
- 100. #2660/131 Wehat Sheaf 32 oz. tall decanter, original stopper
- 101. Lotus Nearcut square cruets, original stopper, unusual
- 102. #2892 Guernsey Semi-Colonial child's cakestand, rare
- 103. #2760 Daisy Nearcut mustard or horseradish jar and cover
- 104. #2631 Marjorie Nearcut signed water bottle
- 105. #2660/108 Wheat Sheaf Nearcut signed 6 oz. cologne & stopper
- 106. #2766 Thistle Nearcut 9" cake salver (cakestand)
- 107. #2719 LaTouraine Nearcut signed 5 pc. ftd. nutset, unusual (Set)
- 108. #2699 Buzz Saw Nearcut butter & cover (tiny nick on finial)
- 109. #2699 Buzz Saw Nearcut 2 pc. epergne (crack bottom of vase), rare
- 110. #671 Cornucopia 1 3/4 oz. wine, early
- 111. Primrose boudoir lamp, black/gold trim, lines at top, rare
- 112. Ebony lamp with ebony base, gold sponged decor with platinum  
encursted etched border, made special for a worker, rare
- 113. #1528 Carmen 10" vase
- 114. #3400/21 Royal Blue 8" 3 part 3 hdd relish
- 115. Mulberry (late) Jenny Lind candy box & cover, rare
- 116. #9403 12 oz. tumbler, enamel Baseball Player, rare
- 117. #316 Crystal "Apple" 5" candy box and cover
- 118. #56 Amber Everglades 13" plate, 3 toed
- 119. #1206 Amber Twist optic 76 oz. jug (crack in handle)
- 120. #3011 Royal Blue Nude 7" comport, cupped, tall stem
- 121. #3011 Carmen Nude table goblet, (chip on base & stomach)
- 122. #p300 Ebony 6" ftd candy box & cover, gold Charleton roses & label
- 123. #27 Willow Blue Everglades creamer
- 124. #3120 Gold Krystol Etch Appleblossom 3 oz. ftd. tumblers (4)
- 125. #W76 Milkglass Mt. Vernon 4" candlesticks (pair)
- 126. #W84 Milkglass Mt. Vernon salt shaker
- 127. #31 Rubina Block Optic 9½" bowl
- 128. #518 Mandarin Gold 8½" Draped Lady figure flower holder, rare
- 129. #1121 Light Emerald Etch Betty ice bucket and handle, signed
- 130. Crown Tuscan 2 lite dolphin candlestick, rare
- 131. #16 Crown Tuscan 7" Seashell comport, enamel boat scene & flowers
- 132. #1221 Swan 5 oz. punch mug or cup (4)
- 133. #3500/62 Gadroon 7½" 4 part relish, Forest Green handles, unusual
- 134. #3077 Willow Blue 9 oz. goblet
- 135. #3011 Crystal Nude 4½ oz. claret
- 136. #56 Forest Green Martha Washington 12 oz. stein, crystal handle



Items #206-214 will be sold separately and then offered as a set whichever is higher

- \_\_\_\_\_ 206. #234 Carrara Community 15½" bowl & 12" bulbous pitcher, extremely rare
- \_\_\_\_\_ 207. #234 Carrara Community soap dish & cover (large chip top of base) rare
- \_\_\_\_\_ 208. #235 Carrara Community 7½" candlesticks (pair)
- \_\_\_\_\_ 209. #235 Carrara Community 3¾" pintray, signed
- \_\_\_\_\_ 210. #237 Carrara Community 16 oz. nite bottle & tumbler, rare
- \_\_\_\_\_ 211. #237 Carrara Community 7" X 11" brush & comb tray
- \_\_\_\_\_ 212. #235 Carrara Community pomade boxes & covers (minor inside nick) (2)
- \_\_\_\_\_ 213. #235 Carrara Community puff boxes & covers (chip lid rim of 1) (2)
- \_\_\_\_\_ 214. #234 Carrara Community brush vase (toothbrushes), rare
- \_\_\_\_\_ 215. #234 Primrose Community brush vase, rare
- \_\_\_\_\_ 216. #3011 Crown Tuscan Nude candlesticks (label on 1), (pair)
- \_\_\_\_\_ 217. #3011/40 Crown Tuscan Nude 10" flower center (chip top back edge)
- \_\_\_\_\_ 218. #47 Crown Tuscan 9½" cornucopia vase
- \_\_\_\_\_ 219. #3500/42 Crown Tuscan 12" covered urn advertising lamp, gold silk screen Cambridge Glass on both sides, gold trim, rare
- \_\_\_\_\_ 220. #3011 Crystal Nude ivy ball, optic bowl
- \_\_\_\_\_ 221. #3011 Carmen Nude 7" comport, cupped, tall stem
- \_\_\_\_\_ 222. #W63 Milkglass Martha Washington individual sugar & creamer (pair)
- \_\_\_\_\_ 223. #3500 Amber 10 oz. goblet, crystal stem/foot
- \_\_\_\_\_ 224. #3011 Crown Tuscan Nude 3 oz. cocktail with Mandarin Gold bowl
- \_\_\_\_\_ 225. #3011 Ebony Nude 3 oz. cocktail with crystal bowl, guaranteed
- \_\_\_\_\_ 226. #15 Milkglass Seashell 6" comport
- \_\_\_\_\_ 227. #91 Early Cobalt 10" ftd. stick vase
- \_\_\_\_\_ 228. #3450 Carmen Nautilus 12 oz. tumbler
- \_\_\_\_\_ 229. #3450 Carmen Nautilus 2 oz. wine, crystal foot
- \_\_\_\_\_ 230. #48 Carmen Martha Washington 8 oz. ftd tumbler
- \_\_\_\_\_ 231. #1203 Carmen 8 oz. tumbler & 7 oz. old fashioned (1 each)
- \_\_\_\_\_ 232. #3035 Carmen 6 oz. tall sherbet, crystal stem/foot
- \_\_\_\_\_ 233. #3450 Royal Blue Nautilus 5 oz. tumbler
- \_\_\_\_\_ 234. #3077 Royal Blue 3 oz. ftd tumbler
- \_\_\_\_\_ 235. #38 Caprice Alpine sugar & creamer (pair)
- \_\_\_\_\_ 236. #76 Caprice 3 lite epergne base, no bobèche
- \_\_\_\_\_ 237. #300 Caprice 9 oz. goblets, (2 repaired) (Lot)
- \_\_\_\_\_ 238. #24 Caprice 9½" plates, scratched (8)
- \_\_\_\_\_ 239. #23 Caprice 7½" plate, some light scratches (8)
- \_\_\_\_\_ 240. #21 Caprice 6½" plates (1 scratched) (8)
- \_\_\_\_\_ 241. #17 Caprice cups & saucers (8)
- \_\_\_\_\_ 242. #38 Caprice sugar & creamer (pair)
- \_\_\_\_\_ 243. #300 Caprice 9 oz. goblets (7)
- \_\_\_\_\_ 244. #300 Caprice 6 oz. tall sherbets (7)
- \_\_\_\_\_ 245. #66 Caprice 13" oval bowl, crimped, 4 ftd.
- \_\_\_\_\_ 246. #33 Caprice 13½" plate, 4 ftd, slight scratches
- \_\_\_\_\_ 247. #183 Caprice 80 oz. ball jug
- \_\_\_\_\_ 248. #1338 Caprice 6" 3 lite candlesticks (pair)
- \_\_\_\_\_ 249. #171 Caprice 6½" diamond dish
- \_\_\_\_\_ 250. #124 Moonlight Blue Caprice 8½" celery & relish
- \_\_\_\_\_ 251. #172 Moonlight Blue Caprice 6½" spade dish
- \_\_\_\_\_ 252. Moonlight Blue Caprice bell made from goblet (not factory)
- \_\_\_\_\_ 253. #207 Moonlight Blue Caprice 2½" X 3½" cigarette box & cover
- \_\_\_\_\_ 254. #38 Pistachio Caprice creamer
- \_\_\_\_\_ 255. #235 Moonlight Blue Caprice 6" 4 ftd. rosebowl
- \_\_\_\_\_ 256. #26 LaRosa Pink Caprice 11½" plate, 4 ftd.
- \_\_\_\_\_ 257. #26 Mocha Caprice 11½" plate, 4 ftd.
- \_\_\_\_\_ 258. #208 Emerald Caprice 3½" X 4½" cigarette box & cover
- \_\_\_\_\_ 259. #W124 Milkglass Caprice 4½" vase
- \_\_\_\_\_ 260. #513 Peachblo 13" Draped Lady flower figure (cracks in base)
- \_\_\_\_\_ 261. #513 Crystal 13" Draped Lady flower figure (chips underneath)
- \_\_\_\_\_ 262. #513 Amber 13" Draped Lady flower figure (cracks in base)
- \_\_\_\_\_ 263. Peachblo 9½" Rose Lady flower figure (chip top of base & underneath)
- \_\_\_\_\_ 264. Amber 9½" Rose Lady flower figure (chip under base)
- \_\_\_\_\_ 265. #509 Peachblo Satin 8¾" 2 Kid flower figure (crack in base)
- \_\_\_\_\_ 266. #518 Moonlight Satin 8½" draped Lady, wooden base (chips, base damage)
- \_\_\_\_\_ 267. #1114 Crystal 6½" Bashful Charlotte figure flower holder
- \_\_\_\_\_ 268. #3400/38 Carmen 80 oz. ball jug & (4) Carmen 12 oz. tumblers (Set)
- \_\_\_\_\_ 269. #1095 Peachblo Decagon 3 pc sugar & creamer set, Etch #731 (Set)
- \_\_\_\_\_ 270. #3500/64 Gadroon 3 compartment celery & relish, gold trim
- \_\_\_\_\_ 271. #95 Azurite 1 pound candy jar & cover
- \_\_\_\_\_ 272. #168 Helio 10" center handled sandwich tray
- \_\_\_\_\_ 273. #3725 Plaza rock crystal cut 9 oz. goblets (4)

- 274. #3122 Amber 5 oz. ftd. tumbler, crystal stem/foot
- 275. #1237 Forest Green 9" vase, crystal ring stem/foot
- 276. Amethyst cordial decanter, original stopper, Farber Duchess Lace
- 277. #3776 Candlelight 9 oz. goblets (4)
- 278. #3776 Candlelight 12 oz. iced teas (6)
- 279. #3776 Candlelight 7 oz. tall sherbets (5)
- 280. #3111 Candlelight 9 oz. goblet, gold encrusted
- 281. #3625 Chantilly 6 oz. tall sherbets (2)
- 282. #215 (Martha) Chantilly 12" 5 part celery & relish, unusual
- 283. #209 (Martha) Chantilly 8" 3 part celery & relish
- 284. #3122 Diane 3 oz. cocktail
- 285. #23 Marjorie tall syrup & cover (chip under lid) rare
- 286. #7606 Marjorie 7" salad plates (7)
- 287. #7606 Marjorie 9 oz. tumblers (6)
- 288. #7606 Marjorie 12 oz. tumblers (4)
- 289. #7606 Marjorie 10 oz. goblets (8)
- 290. #7606 Marjorie 6 oz. tall sherbets (12)
- 291. #7606 Marjorie 10 oz. goblets, repaired (5)
- 292. #7606 Marjorie 6 oz. low ftd. sherbets (1 chipped) (5)
- 293. #3130 Porita 3 oz. cocktails (4)
- 294. #3400/204 Portia 3½" bonbon, deep cupped, unusual
- 295. #3035 Portia 6 oz. tall sherbet
- 296. #3500/17 Rosepoint 12" footed bowl
- 297. #647 Rosepoint 6" 2 lite candlesticks (pair)
- 298. #3500/14 Rosepoint sugar & creamer (pair)
- 299. #3900/72 Rosepoint 6" 2 lite candlesticks (pair)
- 300. #3900/72 Rosepoint 6" 2 lite candlestick
- 301. #7966 Rosepoint 1 oz. cordial, rare
- 302. #3500/15 Rosepoint individual sugar & creamer (pair)
- 303. #3121 Rosepoint 10 oz. goblets (6)
- 304. #3121 Wildflower 1 oz. cordials, worn gold trim (2)
- 305. #3121 Wildflower 3½ oz. wine, worn gold trim
- 306. #1614 Wildflower 7½" hurricane shade only (chips on fitter)
- 307. #3400/1180 Wildflower 5¼" 2 hddl bonbon, worn gold trim
- 308. #3400/175 Wildflower cocktail shaker with #10 chrome top
- 309. #3400/91 Wildflower 8" 3 part relish, scratched
- 310. #3112 Ye Olde Ivy tall sherbets (2)
- 311. 1980 NCC Convnetion paperweight (Mosser glass)
- 312. 1973 NCC Crystal Convention plate (Imperial glass)
- 313. 1974 NCC Blue Convention plate (Imperial glass)
- 314. NCC Blue Lady Leg bookends (Mosser glass) (2)
- 315. #51 Carmen Martha Washington 10 oz. goblets (1-bad flaw) (2)
- 316. #3400/52 Gold Krystol 5½" butter & cover, signed
- 317. #250 Mandarin Gold Martha individual sugar & creamer (pair)
- 318. #1 Mt. Vernon 10 oz. ftd goblets (2)
- 319. #29 Mt. Vernon 2½ oz. mustard & cover
- 320. #59 Mt. Vernon 14 oz. tumblers, stained (2)
- 321. #2 Mt. Vernon 6½ oz. tall sherbet
- 322. #16 Martha Washington 10" ftd. vase
- 323. #156/69 Martha oyster plates with sauce cups (4)
- 324. #156 Martha oyster plate
- 325. #616 Cascade cigarette box & cover
- 326. #4000/3 Cascade cocktails (12)
- 327. #90 Cascade 6½" 2 part relish
- 328. #64 Arcadia 9½" 3 part celery & relish
- 329. #9 Arcadia 12 oz. ftd. iced teas (6)
- 330. #138 Amber Round sugar, signed
- 331. #3500/15 individual sugar
- 332. Amber 4½ oz. claret in Farber Duchess Lace stemmed holder
- 333. Amber Community 4" powder jar base (no lid) signed
- 334. Amethyst comport in 5½" tall Farber grapes stemmed holder
- 335. #138 Amber Round sugar & creamer (2 pair)
- 336. #933 Amber Round cups & saucers, signed (10)
- 337. Amber Round (4) 8" plates, 5 cups, 2 saucers, some damage (Lot)
- 338. #3077 Peachblo 12 oz. ftd. tumblers (2)
- 339. #865 Peachblo Decagon cups & saucers, signed (6)
- 340. #597 Peachblo Decagon 83/8" plates, signed (5)
- 341. #3400/60 Peachblo 6" plates, signed (12)
- 342. #556 Peachblo Round 8" plates, signed (4)
- 343. #668 Peachblo Round 6" plates, signed (5)