



Cambridge Crystal Ball

Published monthly by the National Cambridge Collectors, Inc.
to encourage and report the discovery of the elegant and boundless product
of the Cambridge Glass Company of Cambridge, Ohio

Issue No. 163

November 1986

THOUGHTS FROM YOUR PRESIDENT

At the July Directors meeting, one of the recommendations from the Budget & Finance Committee called for a reduction in our Museum inventory. It was suggested we do this by selling off some of the extra pieces of glass we have, i.e., bookends; cup plates; extra Convention favors, etc., and use this money for the Museum. We discussed this briefly at the Directors meeting and later at the August Quarterly meeting where the membership unanimously agreed that the monies tied up in this inventory could be put to better use.

In the past, when we've had glass made for the Museum, it has been our practice to hold back 15 pieces of each item for our Museum inventory, put two of each item on display, and sell one of the remaining 13 each year at the Annual Mini-Auction. We have been doing the same with the Convention favors that Tom Mosser makes for us, when there are leftovers. This has created a problem. The Mini-Auction (which was originally to consist of pieces of glass donated by faithful members to raise monies for the Museum) is beginning to be a long drawn out affair when we auction one of each of the items we have in inventory, and as the years go by, it will become even worse.

Membership Renewal Notice

This is your **last** issue of the *Crystal Ball*—if the date on your address label reads **11-86**.

Please renew now!

We feel that the sale of these items at this time will not only remedy some of our problem, but will at the same time bring us closer to many of our members. For those of you who joined in recent years and didn't have the opportunity to buy the Lady Leg or Lion Bookends (they sold out quickly), you will now have (although limited) the opportunity.

Also, we realize many of you may never have the opportunity to attend a Convention and possess one of the favors that are given during the Banquet; and that there are also those who have only been able to attend sporadically, and thus have gaps in their beautiful collection of Convention favors. The policy has always been that in order to own one of the favors you had to attend the Convention. Personally I now see the fallacy in that, and I don't think I am alone in my thinking. Many of you have supported our organization through the years when we have asked you for help and we have denied you support when you wrote and asked if you could have a certain Convention favor!

Enough explanation! In this issue of your CRYSTAL BALL (see PAGE 15) is your made to order "CHRISTMAS SHOPPING LIST." An ideal situation for those of you who don't want to fight the Christmas crowd. The prices are those that have been established through previous Mini-Auctions. (Remaining items from this list will be published again in the December CRYSTAL BALL.)

continued on page 13

CAMBRIDGE CRYSTAL BALL

Official publication of National Cambridge Collectors, Inc., a non-profit corporation with tax exempt status. Published once a month for the benefit of its members.

Membership is available for individual members at \$13 per year and additional members (12 years of age and residing in the household) at \$3 each. All members have voting rights, but only one *Crystal Ball* will be mailed per household.

Back issues of the *Crystal Ball* are available (beginning with Issue No. 1, May 1973) for members only. Cost \$.60 each or 12 issues for \$7.

1986-87 OFFICERS & COMMITTEE CHAIRPERSONS

PRESIDENT.....	Willard P. Kolb
VICE-PRESIDENT.....	Mark A. Nye
SECRETARY.....	Janice Y. Hughes
TREASURER.....	William C. Smith
SERGEANT-AT-ARMS.....	Marybelle Moorehead
BUDGET & FINANCE.....	David B. Rankin
BY-LAWS.....	Ekkehart A. Vimmer
CONVENTION.....	Mark A. Nye
MEMBERSHIP.....	Phyllis D. Smith
MUSEUM.....	Billy F. Harbaugh
PROGRAM & ENTERTAINMENT.....	Marlene K. Snyder
PROJECT.....	Willard P. Kolb
PUBLIC RELATIONS.....	William C. & Phyllis D. Smith
PUBLICITY.....	Joseph Andrejcek
STUDY GROUP ADVISOR.....	Phyllis D. Smith
1987 AUCTION.....	Lynn M. Welker
1987 ANTIQUE SHOW.....	Joy R. McFadden
1987 FLEA MARKET.....	Larry F. Hughes
CRYSTAL BALL EDITOR.....	Phyllis D. Smith

CLASSIFIED ADVERTISING RATES

5¢ per word \$1.00 minimum
We cannot mix type size in classified advertisements. Abbreviations and initials will count as words. Payment in full MUST accompany all ads.

DISPLAY ADVERTISING RATES

(camera ready ads preferred)

	Members	Non-Members
1/8 page (9 items)	\$4.00	\$6.00
1/4 Page (20 items)	7.00	10.00
1/2 page (20 items)	12.00	18.00
3/4 page	17.00	25.00
Full page (50 items)	22.00	33.00

DEALERS DIRECTORY

5 line maximum \$12.00 for 12 months
Cambridge *Crystal Ball* assumes no responsibility for items advertised and will not be responsible for error in price, description or other information.

Advertising copy, articles, club news and notices must be in our hands by the 10th of each month to assure publication in our next issue. Paid advertisements containing reproductions or new glass will not knowingly be accepted for publication.

Opinions or information stated in any signed article or letter printed in the *Crystal Ball* are those of the authors and may or may not agree with National Cambridge Collectors, Inc. The Editor reserves the right to refuse and to edit any material submitted for publication so as to conform with the editorial style of the *Crystal Ball*.

PLEASE ADDRESS ALL CORRESPONDENCE TO

National Cambridge Collectors, Inc.
P.O. Box 416 Cambridge, Ohio 43725

PRESIDENT: Willard Kolb 614/695-0695
SECRETARY: Janice Hughes ... 614/432-7823
EDITOR: Phyllis Smith 513/323-3888

NCC MUSEUM of Cambridge Glass is located on U.S. Route 40, 1/8 mile east of I-77 near Cambridge. Hours: 12 noon to 4 PM - Wednesday thru Sunday. (March thru October)

PLEASE NOTIFY US IMMEDIATELY OF ANY CHANGE IN YOUR ADDRESS

Please enclose a SASE when requesting information

CAMBRIDGE GLASS BOOKS FOR SALE

by National Cambridge Collectors, Inc.

* **COLORS IN CAMBRIDGE GLASS**
(128 pages - 60 color plates - fully indexed)
Hardbound with Price Guide \$19.95

* **1930-34 CAMBRIDGE GLASS CO. CATALOG REPRINT**
(250 page reprint of original catalog)
Hardbound with Price Guide \$14.95

* **1949-53 CAMBRIDGE GLASS CO. CATALOG REPRINT**
(300 page reprint of original catalog)
Hardbound with Price Guide \$14.95

* **1956-58 CAMBRIDGE GLASS CO. CATALOG REPRINT**
(164 page reprint of original catalog)
Paperback \$6.95

1985 COMBINED PRICE GUIDE

for 1930-34 & 1949-53 catalog reprints Postpaid \$5.75

*NCC MEMBERS ONLY: These publications are available at 10% discount - or all four (4) at one time for \$50.00.

by Bill & Phyllis Smith

CAMBRIDGE GLASS 1927-1929
(66 page reprint of original catalog)
Paperback with Identification Guide \$7.95

by Mark Nye

CAMBRIDGE STEMWARE
(95 Stemware lines with 107 illustrations)
Paperback \$14.95

by Cambridge Buffs Study Group

NEARCUT
(108 page reprint of 1910 Cambridge Catalog)
Paperback with Price Guide \$9.95

by Mary, Lyle and Lynn Welker

CAMBRIDGE GLASS CO.
(120 pages of reprint from 8 old catalogs)
Paperback \$6.95

CAMBRIDGE GLASS CO. BOOK II
(119 pages of reprint from old catalogs)
Paperback \$6.95

CAMBRIDGE, OHIO GLASS IN COLOR II
Spiralbound \$5.95

by Harold and Judy Bennett

1903 CAMBRIDGE GLASS CO. CATALOG REPRINT
(106 page reprint of an original catalog)
Paperback \$7.50

Address your orders to:

BOOKS
National Cambridge Collectors, Inc.
P.O. Box 416
Cambridge, OH 43725

Please add \$1.00 (P & I) per order.

(Not required for Price Guide)

Ohio residents please add 6% state sales tax.

DEALER DISCOUNTS AVAILABLE - PLEASE WRITE!

PRISTINE

by MARK A. NYE

According to the 1940 Cambridge Catalog, the Pristine line was covered by four design patents. The earliest of these, filed on January 21, 1937, was for a candelabra, later known as the Pristine #502 6" 2-lite candlestick with prisms, or similar article. Eight days later a patent for a bowl or similar article was filed and the bowl shown in the patent application drawing appears to be the #438 10" 2-handled bowl. Then in February, an application was made for a design patent to cover a comport or similar article. Quoting from that application:

"The characteristic feature of the design resides in the glass base portion of the comport which, due to the concavity of the bottom, presents a bulged appearance when viewed from the top thereof."

The fourth and final patent, for "Combined Cheese and Cracker Tray or Similar Article" was granted on June 1, 1937, having been applied for the previous March. Based on known patents covering the line, it appears the stem associated with the Pristine line was never patented by Cambridge and hence one could assume the "look-alikes" we see today preceded the Pristine line and perhaps were patented by another glass house.

In addition to the patent information, a 1937 introduction date for the Pristine line is further supported by trade journal advertisements. From the April 1937 issue of "China, Glass and Lamps" comes the following:

"The bowl and goblet shown are from the Cambridge Glass Co., and are representative pieces from the handmade Pristine line which is brand new. The pattern shows gold filled Laurel Wreath. This line is made in full stemware and a good selection of tableware pieces. The shapes are patented."

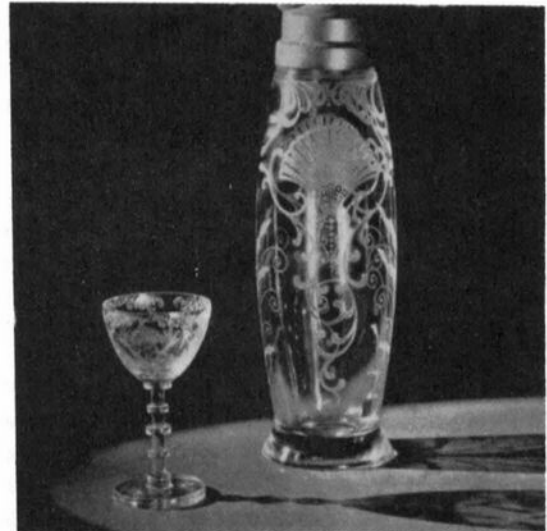
The last sentence was, at the time it was written, not quite entirely true in so much as even though all the patent applications had been submitted by April of 1937, the last two were not granted until May and June of that year.

In the same issue of "China, Glass and Lamps"

was the following which dealt with the display of glassware:

"Model homes or diningrooms offer another good method for display of glassware. The illustration above shows the 'Pristine' glassware of the Cambridge Glass Co. in the new 'Modern House' at the F & R Lazarus Store in Columbus. The 'Pristine' glassware is based on simplicity in design and offers opportunity for beautiful cuttings and etchings."

Over the years, as we all know, Cambridge brought out some etchings that simply "took the country by storm" and years later are still sought after by collectors and connoisseurs of fine glassware. Not so widely known is the fact that there was also a group of etchings that, to use another colloquialism, bombed! In this later group was one called Firenze.



PRISTINE LINE with "FIRENZE" ETCHING

"China, Glass and Lamps" of July 1937 contained a Cambridge advertisement featuring Firenze and, in part, the text read:

"...are a platter, plate and stemware in the etched 'Firenze' design -- a part of the new fall line of the Cambridge Glass Co. The 'Pristine' shape in both tableware and stemware has been used for this new etching, with its fan and scroll motif. It is also produced with the etching gold filled, in all the same assortment of items. The 'Pristine' is also shown decorated with two handsome new cuttings -- one of them the 'Chesterfield,' a design of close set squares with punties in each square; the other 'Belfast,' a pattern of mitred diamonds."

continued on next page

PRISTINE continued from page 3

For some reason, Firenze never caught on with the buying public and very little is seen today.

During 1938, Pristine blanks, both tableware and stemware, were extensively used for rock crystal engravings. Included among those cut on Pristine blanks were: Fantasy (#921); Strawflower (#922); Killarney (#920); Neo Classic (#907); The Pines (#919); Etruscan (#935); Grecian (#936); Belfast (#942); Broadmoor (#951); Chesterfield (#952); American Star (#953); Cranston (#960); and Whitehall (#981). Of this group, Whitehall was used the least during the early months of 1938 with only 12 pieces of Pristine available with this cutting, including the P166 13 1/2" Cabaret plate; P212 10" 5-part Celery and Relish; and the P386 11" ftd. bowl. In addition to the preceding, the cutting Courtship (#939) was also being used on Pristine stemware and possibly some pieces of tableware as well. (Note: Examples of these cuttings may be found in C.B. issues #151, #153 and #154.)

Retailers then and now, in order to create more sales, will be innovative and such was the case with those outlets selling Pristine during the early months of 1938. What they did was to put a ladle with the Pristine #18 bowl and sell it as a mayonnaise set. This practice soon came to the attention of the Cambridge factory and company management reacted by making it an "official" set, known as the Pristine #19 2-piece Mayonnaise Set. Quoting from the announcement of this set to the Cambridge sales staff:

"This (P19) of course can be furnished in all etchings in which the Pristine #18 is made, which are: Firenze, Rose Point, Wildflower, Candlelight, Diane, Elaine, Portia, Valencia and Minerva."

From the early years, with the exception of the reference to Firenze in July 1937, this is the only specific reference found to etched Pristine.

Over the years, several unrelated items not having any of the characteristics associated with the Pristine line found their way into the line. One such piece is the Pristine #68 Shrimp Cocktail or Strawberry Service. It was brought out in the summer of 1939 and was introduced thusly:

"We have produced a new Shrimp Cocktail

or Strawberry Service. You will readily see the idea of it. For Shrimp, the cocktail sauce is put in the center and then the shrimp around the edge; while for strawberry service the powdered sugar is put in the center and the strawberries arranged around the edge. This is a very clever idea and one we think will meet with the general trade."

Apparently the Pristine line was initially an expensive pattern to produce. Some two years after its introduction, Cambridge announced a price reduction along with the following explanation:

"We have found it possible to make a reduction in our Pristine prices, as we have now produced this line for a sufficient length of time to be able to get the proper results in production. Another thing that has made this design very high priced is the fact that it has all been made with cut tops or edges, such as on bowls, relishes, etc. We find that the majority of the trade objects to the cut tops, due to the fact that they chip so very easily. Cutting the top edge is very expensive so by eliminating this we are able to make quite a reduction in our prices. Therefore, we are eliminating this cut edge -- in fact, we have been eliminating it for a long time and no one has objected, even at the high prices."

Nothing like doing a market test before making the elimination of the cut edge known!

The Pristine line continued to grow as witnessed by the following that appeared in the June 1939 issue of "China, Glass & Lamps":

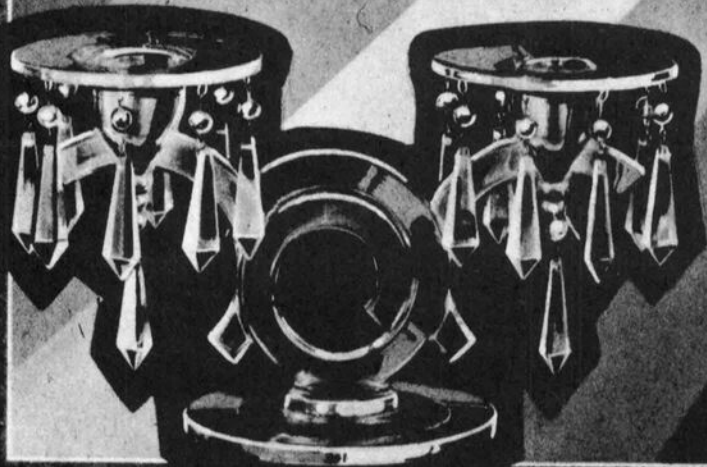
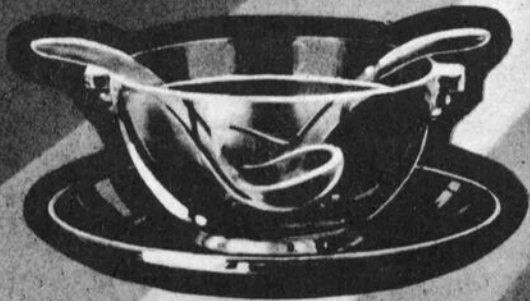
"Among the new items being shown by the Cambridge Glass Co., are the two shown at the right, both in the 'Pristine' Line. The #477 corn dish can be retailed for approximately \$9 per dozen -- and is available plain, cut or etched. The #225 twin stewed fruit or salad bowl represents an innovation in the partitioning of bowls, done by a method which lightens the weight. It can be retailed for approximately \$3 each and is available plain, cut or etched."

In terms of today's dollars, \$3 was not much, but in 1939, the twin Pristine salad bowls were not inexpensive.

to be continued in January 1987

PRISTINE

Pat. Nos. 103538 & 103578

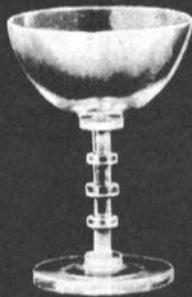




The Cambridge Glass Company



No. 1
11 oz. Goblet
PI: \$10.00



No. 4-6 oz.
Tall Sherbet
PI: \$10.00



No. 6 6 oz.
Low Sherbet
PI: \$10.00



No. 10
4 1/2 oz. Claret
PI: \$10.00



No. 7-5 oz.
Oyster Cocktail
PI: \$10.00



No. 8-3 1/2 oz.
Cocktail
PI: \$10.00



No. 32-5 oz.
Ftd. Cocktail
\$7.50



No. 31-3 1/2 oz.
Ftd. Cocktail
\$7.50



No. 12
3 oz. Wine
PI: \$10.00



No. 84
2 oz. Sherry
PI: \$10.00



No. 16
1 oz. Cordial
PI: \$10.00



No. 15
3/4 oz. Brandy
PI: \$10.00



No. 50
2 oz. Whiskey
PI: \$3.75



No. 29-2 oz.
Ftd. Wine
PI: \$7.50



No. 25-12 oz.
Ftd. Tumbler
PI: \$10.00



No. 26-10 oz.
Ftd. Tumbler
PI: \$10.00



No. 28-5 oz.
Ftd. Tumbler
PI: \$10.00



No. 18-Sea Food or Fruit
Cocktail and Liner
PI: \$16.50



No. 486-5 oz.
Hid. Punch Cup
PI: \$6.25



No. 53-3 1/2 oz.
Hid. Tumbler
PI: \$6.25



No. 64 Fingerbowl
PI: \$7.50



No. 162-5 in. Oval Comport
PI: \$11.25



No. 173-5 in. Ftd. Comport
PI: \$15.00



No. 468-6 1/2 in. Tall Comport
PI: \$30.00

No. 65 Fingerbowl Plate
PI: \$7.50



No. 801 2 pc. Oval Canape Set
8 1/2 in. Plate w/5 oz. Ftd. Cocktail
\$22.50
Also No. 158 8 1/2 in. Oval Canape Plate
Pl: \$15.00



No. 800 2 pc. Oval Canape Set
8 1/2 in. Plate w/3 1/2 oz. Ftd. Cocktail
\$22.50



No. 802 2 pc. Oval Canape Set
8 1/2 in. Plate w/5 oz. Cup
\$21.25



No. 791 2 pc. Round Canape Set
6 in. Plate w/5 oz. Ftd. Cocktail
\$18.75
Also No. 156-6 in. Round Canape Plate
Pl: \$11.25



No. 790-2 pc. Round Canape Set
6 in. Plate w/3 1/2 oz. Ftd. Cocktail
\$18.75



No. 792 2 pc. Round Canape Set
6 in. Plate w/5 oz. Cup
\$17.50



No. 281 5 1/2 in. 3 pc. Mayonnaise Set
Pl: \$35.00



No. 286 5 1/2 in. 2 Compt. Twin
Salad Dressing Bowl w/2 Ladles
Pl: \$27.50



No. 280 5 1/2 in. Mayonnaise & Ldl.
Pl: \$22.50



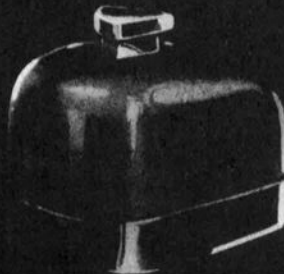
No. 285 5 1/2 in. 2 Compt. Twin
Salad Dressing Bowl
Pl: \$22.50



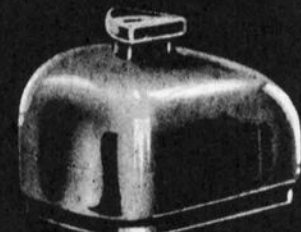
No. 287 5 1/2 in. 4 pc. 2 Compt.
Salad Dressing Set
Pl: \$40.00



No. 807 6 in. Triangular Cheese Block
Without Cover-\$15.00



No. 808 6 in. Triangular
Cheese Block w/Cover
\$30.00



No. 809 6 in. Triangular Covered Bonbon
\$30.00



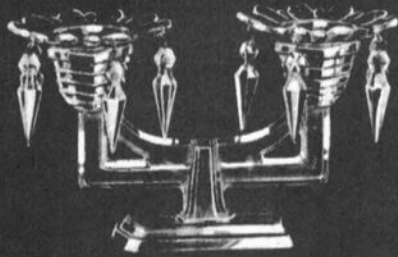
No. 806-12 in. Oval Lunch Server
Without Cover-\$60.00



No. 805-12 in. Oval Lunch Server w/Cover
\$75.00



The Cambridge Glass Company



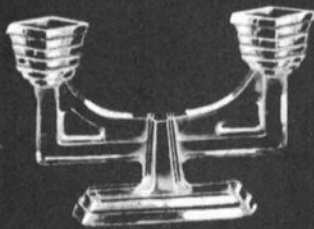
No. 518 5 in. 2-lite C/brum
w/No. 23 Bob. & 10 No. 5 Prisms
PI: \$60.00



No. 497 5½ in. 1-Lite Candlestick
w/No. 4 Prism PI: \$30.00



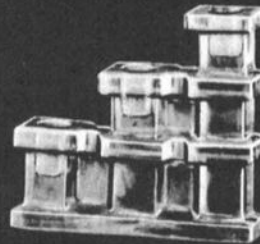
No. 520 6 in. 2-lite C/brum
w/Bob. & 18 No. 4 Prisms
PI: \$79.00



No. 501 5 in. 2-lite C/stick
PI: \$22.50



No. 494 3½ in. Candlestick
PI: \$11.25



No. 503 6 in. 3-lite C/stick
PI: \$37.50



No. 502 6 in. 2-lite C/stick
w/2 No. 4 Prisms PI: \$40.00



No. 507 7½ in. Candlestick
w/Bobeche & 8 No. 4 Prisms
PI: \$37.50



No. 498 7 in. Candlestick
PI: \$18.75



No. 606 9½ in. Ftd. Bud Vase
PI: \$15.00



No. 604 8 in. Ftd. Bud Vase
PI: \$15.00



No. 571 2½ in. Vase
PI: \$3.75



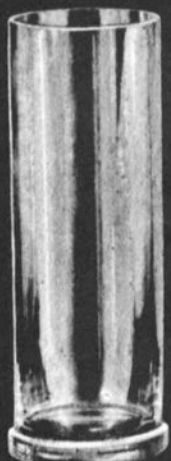
No. 602 6 in. Ftd. Vase
PI: \$15.00



No. 404 6 in. Ball Vase
PI: \$22.50



No. 423 5 in. Ftd. Ivy Ball
PI: \$30.00



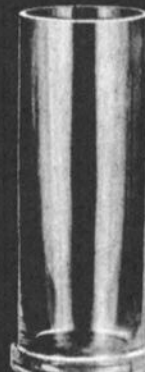
No. 592 12 in. Vase
PI: \$37.50



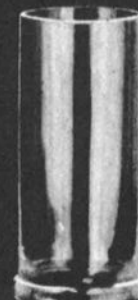
No. 588 11 in. Vase
PI: \$37.50



No. 611 11 in. Ftd. Vase
PI: \$37.50



No. 584 10 in. Vase
PI: \$30.00



No. 579 8 in. Vase
PI: \$22.50



No. 580 8 in. Flip Vase
PI: \$30.00
Also No. 593 12 in. Vase
PI: \$75.00



No. 312 5 1/2 in. Candy Box w/Cover
PI: \$30.00



No. 314 5 1/2 in. 2 Compt.
Candy Box & Cover
PI: \$33.75



No. 323 5 1/2 in. 2 Hld. Bonbon
PI: \$18.75



No. 355 1 1/2 in.
Ftd. Ind. Salt
PI: \$7.50



No. 172 2 1/2 in.
Ftd. Ind. Nut Dish
PI: \$7.50



No. 99 Cocktail Shaker w/Metal Top
PI: \$52.50



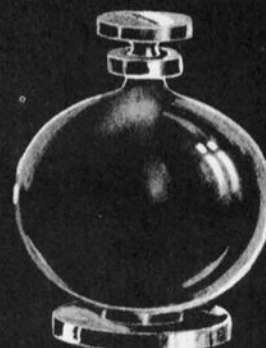
No. 252 Sugar & Cream (doz. prs.)
PI: \$18.75



No. 360 Salt & Pepper Shaker w/Glass Tops
also
No. 358 Ind. Salt & Pepper Shaker
\$11.25 doz. prs.



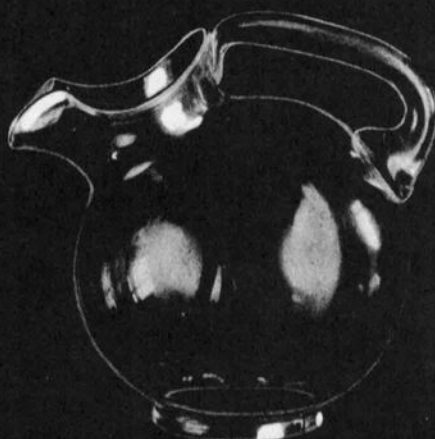
No. 671 6 in. Ice Tub
PI: \$22.50



No. 85 28 oz. Decanter
PI: \$45.00



No. 75 54 oz. Jug
PI: \$37.50



No. 72 80 oz. Ball Jug
PI: \$37.50



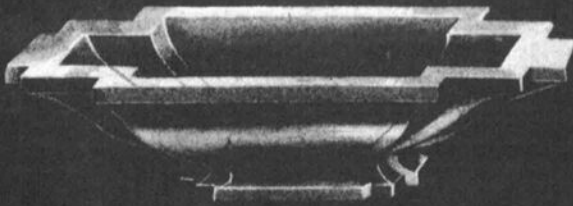
No. 89 26 oz.
Square Decanter
Cut Stopper pol. in
PI: \$35.00



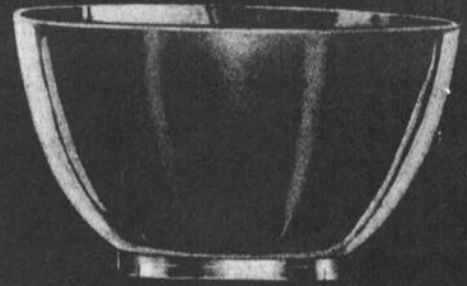
No. 80 14 oz.
Square Decanter
Cut Stopper pol. in
PI: \$27.50



The Cambridge Glass Company



No. 456 12 in. Ftd. Oblong Bowl
Pl: \$45.00



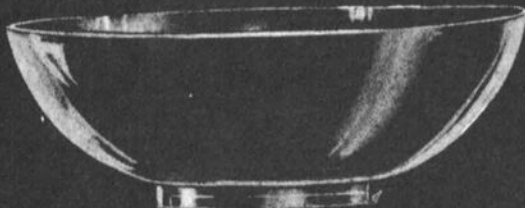
No. 427 10 in. Salad Bowl
Pl: \$30.00



No. 431 13 in. Salad Bowl
Pl: \$30.00
No. 434 15½ in. Salad Bowl
Pl: \$60.00



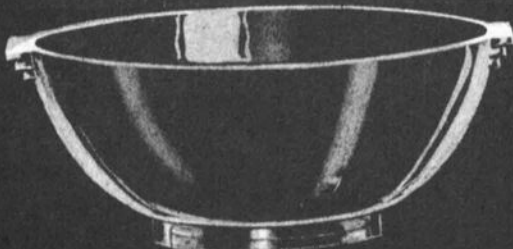
No. 386 11 in. Ftd. Bowl
Pl: \$45.00



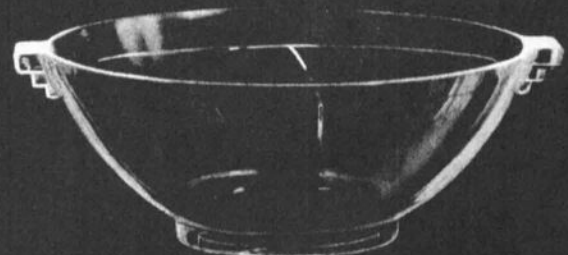
No. 429 11 in. Salad Bowl
Pl: \$30.00



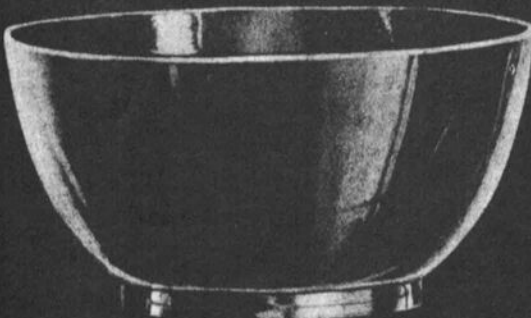
No. 383 8½ in. Ftd. Bowl
Pl: \$37.50



No. 438 10 in. 2 Hld. Bowl
Pl: \$37.50
Also No. 435 7½ in. Bowl
Pl: \$22.50



No. 223 10 in. 3 Compt. Bowl
Pl: \$45.00



No. 476 11½ in. Tom & Jerry Bowl
Pl: \$60.00



No. 382 12 in. 2 Hld. Oval Bowl
Pl: \$45.00



No. 744 - 4½ in. Cig. Box w/Cover
PI: \$18.75



No. 742 - 3½ in. Cig. Box w/Cover
PI: \$11.25



No. 720 - 2½ in. Sq. Ash Tray
PI: \$6.25



No. 714 - 4 in. Ash Tray
PI: \$11.25

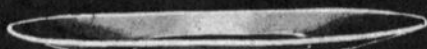


No. 128 - 17 in. Plate
PI: \$75.00

No. 125 - 14 in. Plate
PI: \$37.50



No. 166 - 13½ in. Cabaret Plate
(rolled edge)
PI: \$37.50



No. 122 - 7½ in. Salad Plate
PI: \$12.50

No. 169 - 16½ in. Cabaret Plate
(rolled edge)
PI: \$75.00



No. 246 - 11 in. Celery Tray
PI: \$22.50



No. 162 - 12 in. Oval Cheese & Cracker
PI: \$37.50



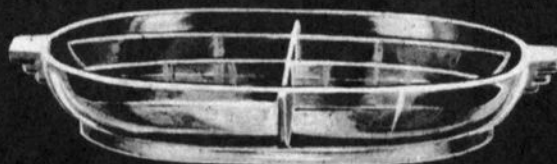
No. 213 - 11 in. 2 Compt.
Celery and Radish
PI: \$30.00



No. 207 - 8 in. 3 Compt. Relish
PI: \$22.50



No. 215 - 12 in. 4 Compt. Relish
PI: \$45.00

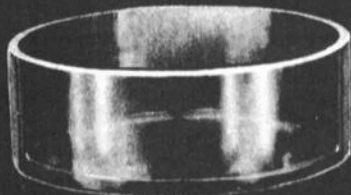


No. 212 - 10 in. 5 Compt.
Celery and Relish
PI: \$37.50

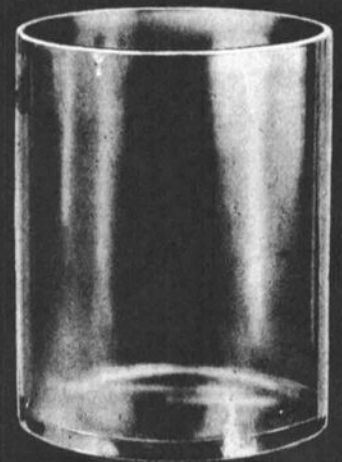


TABLE ARCHITECTURE

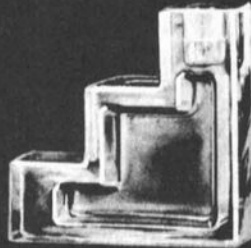
PATENT APPLIED FOR
TRADE MARK REGISTERED



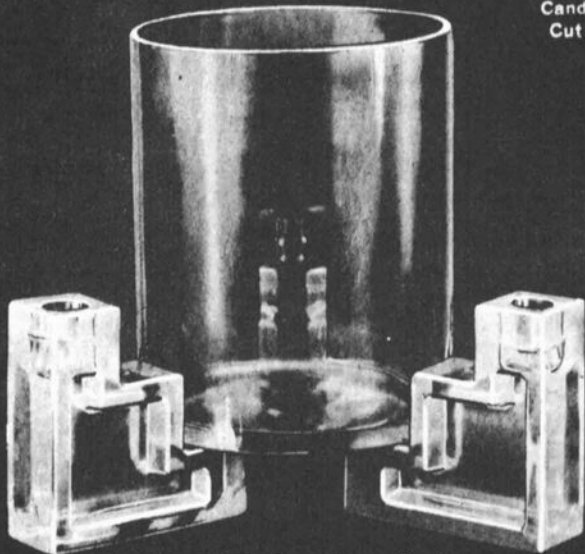
No. 389 8 in. Flower Center Bowl
PI: \$30.00



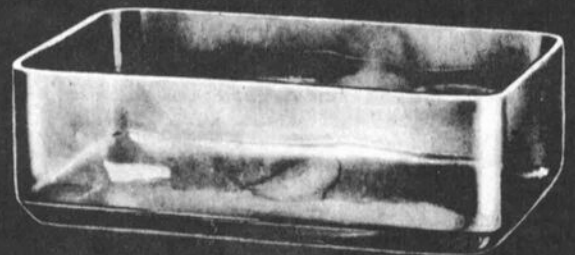
No. 417 7 x 8 Floating Flower Bowl
PI: \$45.00



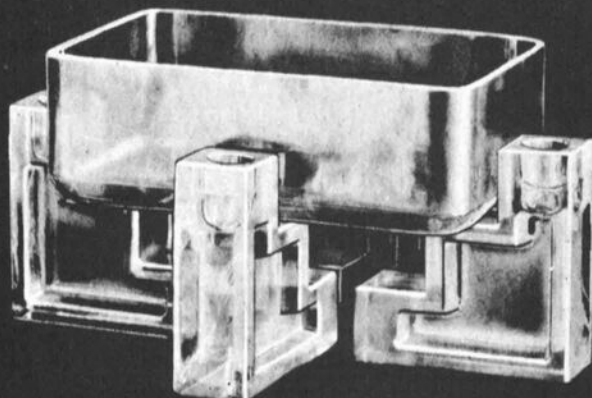
No. 496—5 In. Interchangeable
Candlestick and Flower Trough
Cut Top and Bottom: \$30.00
Full Cut: \$45.00



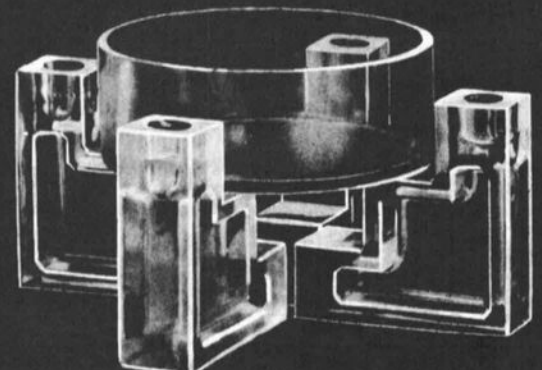
No. 417/496—4 pc. Flower Center
PI: \$135.00



No. 419—3½ x 6½ x 10½ Flr. Center
PI: \$75.00



No. 419/496 5 pc. Flower Center
PI: \$195.00



No. 389/496—5 pc. Flower Center
PI: \$150.00

A note of explanation about two of the items on our "CHRISTMAS SHOPPING LIST" that many of you may not be familiar with. First, the "Amber Frosted Lion Bookends." When Imperial made the amber bookends for us, they frosted four of them. Two will remain in the Museum and we have decided to sell the other pair. The second item of note is listed under "Convention Favor Paperweights." It is the 1981 Tomato color with Club logo. In 1981, the paperweight color was carmen. We did not have enough to supply the members that were in attendance at that Convention, so Tommy Mosser (whom we can't say enough for) said he would make enough additional carmen ones at a later date so everyone could have one. Lo and behold, when these additional (supposedly carmen) weights came out of the lehr, they were what Tommy named "Tomato." The four we've sold at Mini-Auction have brought \$125.00, \$100.00, \$100.00 and \$75.00. If you have attended all the Conventions since 1973 and think you have ALL of the favors, you are wrong! You now have the opportunity to add this most important one to your collection. This time, we are offering you some really special items, in return for your money!

I know there have probably been some questions as to why many of you have not yet received your "Thank You" and income tax statements for your donations made during 1986. As usual, I am waiting until the last minute so I can consolidate the multiple donations. I have also been at odds with the use of the new computer at the Museum, but I no longer think this will be a problem. The only problem I have now is that my Doctor says I must undergo surgery again in the very near future. I will guarantee you that if I can't get to the computer at the Museum, and if I can't be allowed to sit and type, I'll write to you in longhand while I'm confined. It should be much better for you anyway - did you ever see an IRS person that could read longhand?

In case you don't make it to the November Quarterly Meeting where I can tell you in person

"Best Wishes to you and your family for a Safe and Happy Thanksgiving Holiday!"



WILLARD

✓ ✓ ✓
The trouble with political
jokes is that they often get
elected to office.
✓ ✓ ✓

ATTENTION!

In order to use these eight new catalog pages (see pages 5 thru 12) for the Pristine pattern this month, we ran short of space and had to eliminate almost everything else, with the exception of our advertising and message from President Kolb.

It was felt that these Catalog pages should be run together as a unit, along with Part I of Mark Nye's article on Pristine. There are additional pages that will be included with Part II in the January 1987 issue of the CRYSTAL BALL. (These catalog pages are contributed for use in the CRYSTAL BALL thru the courtesy of Bill and Phyllis Smith.)

Having TOO MUCH material is a luxury we have seldom (if ever) experienced, and having to apologize for not using material sent to us is practically unheard of — but we have to do so this month. We have reports and articles from our Study Clubs, plus our regular articles from George Fogg and Charles Upton, and the remainder of the prices from the Westfall Auction. We will get to all this next month!

— Classified —

BUYING: Caprice blue or Rosepoint by Cambridge. Rose or Orchid by Heisey. American, June, Fairfax, Versailles, Trojan by Fostoria. Also Depression Glass and all crystal or colored of that era. **Nadine Pankow**, 207 S. Oakwood, Willow Springs, IL 60480. 312/839-5231.

FOR SALE: Cambridge Rosepoint dinner plates, crystal, 10 1/2" (8) \$80.00 each. **Sally Ward**, 7754 Maxtown Road, Westerville, OH 43081. 614/882-1325.

SHOWCASE ANTIQUE and GIFT SHOP

EVELYN M. ALLEN

1263 HEBRON RD. (Rt. 79), HEATH, OH 43056

614/522-1785

HOURS: 12:30 to 5 PM DAILY

(Closed Monday)

BUYING and SELLING: CAMBRIDGE, HEISEY,

FOSTORIA, FENTON, & OTHER AMERICAN

MADE GLASS, & POTTERY.

NEW GIFT ITEMS.

Other hours by Appointment Home Phone: 614/522-1635

COLUMBUS ANTIQUE FLEA MARKET

(ANTIQUES & COLLECTIBLES)

Ohio State Fairgrounds - Lausche Building
Off I-71 Exit 17th Avenue - Columbus, Ohio

NOVEMBER 9th

Sunday Only - 7 A.M. to 4 P.M.
Show Admission \$1.00 - Under 12 Free
150 QUALITY DEALERS

SELLING: Advertising Art Deco, books, Cambridge, clocks, coins, collectibles, Depression glass, dolls, Fiesta, fine early furniture, Heisey, jewelry, lamps, oak furniture, post cards, pottery, good primitives, tools and print shop items.



4214 North High Street, Columbus, Ohio 43214
(614) 267-8163 (614) 263-6830 (614) 885-2352

NEXT SHOW: December 14

The DAZE

★ SPECIAL OFFER
to NCC friends
\$2. off the 1 year
subscription price,
when on this form
or copy of.

The Original, National monthly newspaper dedicated to the buying, selling & collecting of colored glassware and china including Depression Glass and the Elegant Glass (Cambridge, Heisey, Fostoria etc.) . We educate and inform you each month with feature articles by top notch columnists, readers "finds", club happenings, show news and a multitude of ads. Find those missing pieces to your 30s, 40s or 50s pattern. Can't identify it? Perhaps we can help. "Keep up with what's happening with a subscription to the DAZE. Buy, sell or trade from the convenience of your easy chair.

Name _____ Street _____

City _____ State _____ Zip _____

1 yr. - \$15.00 2 yrs. \$29.00 \$1.75 single current copy
 Check enclosed MasterCard Visa

Exp. date _____ Card No. _____

Signature _____

Orders to D.G.D., Box 57NC, Otisville, MI 48463

Please allow 30 days for your first issue— Canadian subscribers, add \$1. per year and subscribe by charge card only! This Special Offer May Not Be Combined With Other Special Offers

WELCOME TO GLASS COUNTRY!

I-70

STOP AND SEE US

ROUTE 40

WE FEATURE GLASSWARE OF:
CAMBRIDGE, HEISEY, FENTON & FOSTORIA

Plus a full line of Art Pottery and a General line of Quality Antiques

Stage Coach Antique Mall

RT. 40, ONE-HALF MILE WEST OF I-70 NORWICH EXIT #164
MANY DEALERS-WIDE SELECTION-PLENTY PARKING

DORIS AND ROY ISAACS
BUY AND SELL
614-872-3720



7525 EAST PIKE
NORWICH, OHIO 43787

MON THRU SAT 10-5:30 SUN 12-5:30
SUMMER EVENING HOURS BY CHANCE

MANY DEALERS - PLENTY OF PARKING

N. C. C. CHRISTMAS SHOPPING SUGGESTIONS

Earliest postmarks will determine lucky purchasers in cases of insufficient quantities.

BOOKENDS

- #1141 LADY LEGS, Blue, First of the Museum Reissue Series, 5 only...(ea)...\$50.00
(Add \$3.00 P. & H. - Ohio residents add \$2.75 tax)
- #1129 LION, Amber, Second of the Museum Reissue Series, 9 only.....(ea)...\$38.00
(Add \$3.00 P. & H. - Ohio residents add \$2.09 tax)
- #1129 LION, Amber Frosted, Special Treatment Item, 2 only.....(ea)...\$75.00
(Add \$3.00 P. & H. - Ohio residents add \$4.13 tax)
- #1128 SCOTTY, Black Frosted, Third of the Museum Reissue Series,.....(ea)...\$30.00
(Add \$3.00 P. & H. - Ohio residents add \$1.65 tax)
- #1119 EAGLE, Cobalt Blue, Fourth in the Reissue Series,.....(ea)...\$25.00
Limit 1 per member thru Nov. 8, 1986
(Add \$3.00 P. & H. - Ohio residents add \$1.38 tax)
After Nov. 8, No Limit while supply lasts.....(ea)...\$30.00
(Add \$3.00 P. & H. - Ohio residents add \$1.65 tax)

CONVENTION FAVORS

Paperweights

- 1979 - Amber with Club Logo and Date..(limited quantity).....(ea)...\$16.00
(Add \$1.50 P. & H. - Ohio residents add \$.88 tax)
- 1980 - Windsor Blue with Club Logo and Date.....(ea)...\$16.00
(Add \$1.50 P. & H. - Ohio residents add \$.88 tax)
- 1981 - Tomato with Club Logo (not dated).....(ea)...\$75.00
(Add \$1.50 P. & H. - Ohio residents add \$4.13 tax)
- 1982 - Gold Krystol with Club Logo and Date.....(ea)...\$14.00
(Add \$1.50 P. & H. - Ohio residents add \$.77 tax)

Georgian Tumblers, 2½ oz.

- 1983 - Cobalt Blue, Marked "10th Anniversary - 1973 N.C.C. - 1983"...(ea)...\$18.00
(Add \$1.50 P. & H. - Ohio residents add \$.99 tax)
- 1984 - Pink, Marked "N. C. C." no date.....(ea)...\$12.00
(Add \$1.50 P. & H. - Ohio residents add \$.66 tax)
- 1985 - Amber, with Club Logo and Date.....(ea)...\$14.00
(Add \$1.50 P. & H. - Ohio residents add \$.77 tax)
- 1986 - Gold Krystol, with Club Logo and Date.....(ea)...\$14.00
(Add \$1.50 P. & H. - Ohio residents add \$.77 tax)

CUP PLATES

- Crystal (limited number); Cobalt Blue (limited number); Amethyst; Teal (ea)..\$7.00
(Add \$1.00 P. & H. - Ohio residents add \$.39 tax)

CAMBRIDGE GLASS COMPANY STOCK CERTIFICATES

- These are original certificates suitable for framing.....(ea)..\$5.00
(Price includes mailing - Ohio residents add \$.28 tax)

See BOOK LIST on page 2 for additional suggestions

National Cambridge Collectors, Inc.
P.O. Box 416
Cambridge, OH 43725

LYNN WELKER

2 East Main, New Concord, OH 43762
 Phone: 614/826-7414 or 614/826-4418

CAPRICE

#1338 Candlesticks, emerald, pr. ..\$	30
#20 Plates, 5 1/2", pistachio (6)..	12
#17 Cup & Saucer, mocha (3).....	25
#53 10 1/2" crimped Bowl, pink.....	50
W124 (#337) 4 1/2" Vase, milkglass.	40

CHANTILLY

#3625 10 oz. Goblets (8).....\$	20
#3625 12 oz. ftd. Iced Teas (5)....	20
#3600 10 oz. Goblets (7).....	20
#3600 3 oz. Cocktails (2).....	20
#3600 1 oz. Cordials (2).....	40

APPLEBLOSSOM

#3035 tall Sherbets, pink (5).....\$	25
#3400/54 Cups/Saucers, crystal (4).	15

PORTIA

#3121 3 oz. Cocktails (4).....\$	18
#3400/14 7" tall Comport.....	45
#1337 Cig. hldr. w/Ashtray ft.	45

WILDFLOWER

#3121 3 oz. Cocktails (7).....\$	18
#6004 8" ftd. Vase.....	25
#3400/77 ftd. Salt & Pepper, pr. ..	30
#3400/45 11" ftd. Bowl.....	40

FIGURE FLOWER HOLDERS

#518 8 1/2" Draped Lady, moonlight blue.....\$	230
mandarin gold.....	175
#513 13 1/2" Draped Lady, moonlight blue.....	400
#1115 10 1/2" Bashful Charlotte, moonlight blue satin.....	425
bright amber.....	200
Eagle, amber.....	200
Parrot, lt. emerald satin.....	200
#70 Turtle, crystal, mint.....	125

CAMBRIDGE ARMS

#1563 4-Candle Arm, each.....\$	15
#628 low Candle Base, each.....	10
#1633 peg Vase, each.....	12
#1536 peg Nappy, each.....	8
Bobeches of all kinds, including etched ones.....	Write

BLOSSOMTIME

#1701 9" Hat.....\$	150
---------------------	-----

ROSEPOINT

#3500/69 6 1/2" 3-pt. Relish.....\$	25
#3500 12" Celery.....	40
#3500/37 7" tall hldd. Comport....	90
#3500/15 Ind. Sugar/Creamer, pr...	35
#6004 8" ftd. Vase.....	45
#147 8 oz. Marmalade & cover.....	90
#151 3 oz. Mustard & cover.....	100
#1337 Cig. hldr. w/Ashtray ft. ...	115
#3900/65 12" oval Bowl, handled...	60
#3900/126 12" 3-pt. Celery/Relish.	45
#3900/671 Ice Bucket.....	100
#3900/120 6 oz. Oil & stopper.....	75
#3900/120 12" 5-pt. Celery/Relish.	60
#3400 10 1/2" oval Celery/Relish..	50
#3400/54 Cups/Saucers (4).....	30
#3400/60 6 1/2" Plates (6).....	12
#3121 10 oz. Goblets (12).....	22
#3121 6 oz. tall Sherbets (12)....	20
#3121 5 oz. ftd. Tumblers (5).....	25
#3121 12 oz. ftd. Iced Teas (6)...	24
#3500 Goblets, short bowl (2).....	30
#3500 12 oz. ftd. Iced Teas (5)...	25
#3500 2 1/2 oz. Wines (8).....	45
#3500 7 oz. low Sherbets (12).....	15

Rosepoint Sterling Set

service for 8.....Write

#3011 NUDES

Claret, emerald.....\$	80
Banquet Goblet, emerald.....	175
Cocktails, mocha & pink, ea.....	100
Cocktail, pistachio.....	110
Cocktails, green & gold (satin)...	85
Champagne, carmen.....	110
Brandies, amber & emerald, ea.....	75

3" SWANS

Style II: lt. emerald.....\$	30
gold krystal.....	30
royal blue.....	90
crown tuscan.....	60
Style III: crown tuscan.....\$	25
milkglass.....	60
mandarin gold.....	30
carmen.....	70

POSTAGE EXTRA -- EXCESS REFUNDED

RETURN PRIVILEGE

DOYLE L. BYINGTON

58 BUENA VISTA TERRACE
SAN FRANCISCO, CA 94117

[415] 621-1854

SWAN, 10 1/2" Amber with detail, style #1, signed.	\$ 375.00
8 1/2" Forest Green, rare style #1, signed	275.00
SWAN Punch Bowl, base, ladle and 10 cups, crystal, set	1,250.00
NUDE Ivy Ball, Smoke	\$ 375.00
Crown Tuscan.	250.00
Amber	225.00
Crystal Optic	150.00
NUDE Comport, flat, Heatherbloom	375.00
cupped, Amber.	250.00
mint dish, Carmen.	750.00
Seashell flared, Windsor Blue, signed.	425.00
NUDE Cigarette Box, short stem, Carmen	250.00
short stem, Crown Tuscan	250.00
short stem, Crystal.	225.00
NUDE Ash Tray, Moonlight Blue.	500.00
Crystal	200.00
Carmen.	225.00
Amber	350.00
Crown Tuscan.	225.00
FLYING NUDE Bowl, Carmen	975.00
NUDE Banquet Goblets, Royal Blue (4) each.	350.00
NUDE Table Goblets, Royal Blue (4) each.	175.00
Amethyst (6) each.	135.00
Carmen (6) each.	150.00
NUDE Champagnes, Royal Blue (4) each	150.00
Amethyst (6) each	125.00
Carmen (6) each	125.00
NUDE Clarets, Royal Blue (4) each.	150.00
Amethyst (6) each.	125.00
Carmen (6) each.	150.00
NUDE Cocktails, Royal Blue (4) each.	150.00
Amethyst (6) each.	100.00
Carmen (6) each.	125.00
NUDE Brandies, Royal Blue (4) each	150.00
Amethyst (6) each	100.00
Carmen (6) each	125.00
DOLPHIN Candlesticks, with Mt. Vernon base, Amber, pair.	\$ 225.00
with Mt. Vernon base, rare Mulberry, pair.	375.00
with Mt. Vernon base, Peachblo	275.00
ROSEPOINT Etch, #3121 Cordials (10) each	\$ 55.00
#3121 Wines (8) each	55.00
#3121 Wines, rare short style (5) each	75.00
#3900 10 1/2" Dinner Plates (10) each.	100.00
Dolphin Candlesticks, with square base, Hurricane Lamps, complete with bobèche and prisms, pair.	850.00
MELON BOY Figure Flower Holder, Peachblo	\$ 750.00

BEST WISHES TO ALL for the THANKSGIVING and CHRISTMAS HOLIDAYS!

UNGER JUNCTION


P.O. Box 8125 Rolling Meadows, IL 60008
312-394-2491

CAMBRIDGE GLASS

Rams Head 2-lite Candlesticks, pair ..\$ 77	Crackle, Cambridge Square Goblet\$ 85
Two-Kids flower holder, crystal 110	Crackle, Cambridge Square Wine 95
Two-Kids flower holder, green 185	Crackle, Cambridge Square Sherbet 70
	<u>Etchings</u>
3 1/2" Swan, green, marked 28	#738 Center handled Server, pink\$ 35
	#3130 Goblets, gold krystal, etched
<u>CROWN TUSCAN</u>	Apple Blossom (2) each 15
Seashell flower holder\$ 58	Ice Bucket, etched Candlelight 95
Large Cornucopia ftd. Shells, pair ... 95	#3500 tall Comport, etched Elaine 65
8" ftd. Flower Center Shell 88	#3500 3-pt. Covered Candy w/paper
4" Dolphin ftd. Shell Candlesticks,	label, etched Rosepoint 135
pr. 125	#3121 Covered Candy, E. Rosepoint 110
Portia single keyhole Candlesticks,	#394 Round 5-pt. Relish, E. Rosepoint. 110
gold encrusted, pair\$ 66	#3500/17 Bowl, gold encrusted,
Tally-Ho Punch Bowl w/Tally-Ho ladle;	etched Rosepoint 78
also includes 12 assorted colored	Tuxedo Tumblers, carmen (6) each\$ 10
handled cups, complete\$215	Sherbets, carmen (3) each 8
Caprice Ice Bucket, moonlight blue ...\$ 95	Sherbets, green (6) each 8
Caprice Alpine, 3-ftd. covered Candy,	
moonlight blue 135	
#3776 Wines, cut Maryland (9) each ...\$ 10	
#1341 Cordials: (4) amethyst and	
(4) green, each\$ 5	
Cut Wild Rose Punch Cups (6) each\$ 13	
Spiral Optic 12 oz. Tumblers,	
carmen (6) each\$ 15	
moonlight blue (6) each 17	
Nautilus Pitcher w/3 Tumblers,	
amber, all\$ 55	
Ebony Nude Stem Cocktails (2) each ...\$ 95	
Pinch Decanter, carmen w/carmen	
stopper\$ 65	
Doric Candlesticks, Jade, pair\$ 85	
#2700/109 Azurite 3-pc. Console Set ..\$ 68	
#3500 Cigarette Holder\$ 45	
#732 Refectory Bowl, avocado\$ 95	
#732 Refectory Bowl, amber 55	

POSTAGE & INSURANCE EXTRA - 7 DAY RETURN
PRIVILEGE WITH OUR LABEL INTACT

THIRD ANNUAL



ALL GLASS SHOW & SALE

Sponsored by:
"TUSCAN CROWNS" STUDY GROUP OF THE
National Cambridge Collectors, Inc.

Featuring:
CAMBRIDGE, Hersey, Fostoria, Fenton, Carnival,
DEPRESSION GLASS, China, Pottery and More.

FRIDAY, NOV. 28, 1986
4:00 pm - 10:00 pm

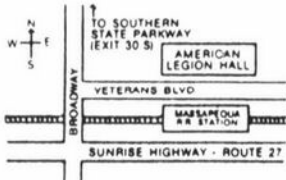
SATURDAY, NOV. 29, 1986
9:00 am - 6:00 pm

Donation:
\$2.00 ea.

Admit 2 at:
\$1.75 ea.
WITH THIS AD

**AMERICAN LEGION
HALL**
66 Veterans Blvd.
Massapequa, N.Y.
(516) 798-9661
(OFF MASSAPEQUA R.R. STATION)

FOR INFORMATION:
R. Serzanin - (516) 273-5084



SPECIALIZE IN CAMBRIDGE GLASS & ANTIQUES
DOYLE L. BYINGTON

58 Buena Vista Ter., San Francisco, CA 94117
 415/621-1854

Shows: Mail-Order - Buy & Sell - By Appointment

DEALERS DIRECTORY



NOTE When writing to the Dealers listed here please enclose a SASE!

MILBRA'S MATCHING SERVICE
 P.O. Box 363, Rio Vista, TX 76093
Milbra Long 817 / 645-6066
 FOSTORIA * CAMBRIDGE * HEISEY * DEPRESSION
 ERA GLASSWARE
BUY and SELL

ANDREJCAK'S ANTIQUES
 14533 Bayes Ave.
 Lakewood, Ohio 44107
Joe & Karen Andrejcek 216-226-3417
SHOWS ONLY — CAMBRIDGE — FENTON — CHINA

BOGART'S ANTIQUES
 Stagecoach Mall, Building #2
 Norwich, OH 43767

Jack and Sharon Bogart
 614/826-7439 and 614/872-3514

 BUY - SELL - APPRAISE - REFINISH
 SEAT WEAVING - CLOCK REPAIR
 COPPER & BRASS POLISHING
GENERAL LINE CAMBRIDGE GLASS

THE GLASS CUPBOARD
 39 Shire Oaks Drive
 Pittsford, New York 14534
Marcia Ellis Cambridge, Duncan Miller
 (716) 586-7596 Shows, Mail Order, Appt.

PEG AND DALE GOTSCHALL
 Antiques, Cambridge and Other Quality Glass
 833 N. 6th St., Cambridge, Ohio 43725
 Phone 614/432-5529
 Stagecoach Mall — Bldg. 2 — Norwich, Ohio

THE HITCHING POST
 7467 S. R. 88
 Ravenna, OH 44266
 Ph. 216-296-3686 **D. McDaniel**
CAMBRIDGE — HEISEY — GENERAL LINE

L & M ANTIQUES
 1331 S.E. 4th Ave., Pompano Beach, FL 33060
Lydia & Cliff McNeil 305/943-2274
CAMBRIDGE & FOSTORIA OUR SPECIALTY
 Buy & Sell Shows Only

THE GLASS URN
 456 West Main Street, Suite G.
 Mesa, AZ 85201 602 / 833-2702
 Mail Order Shows Open Shop
CAMBRIDGE, FOSTORIA, HEISEY, ETC.

BENICIA ANTIQUE SHOP
 305 First Street
 Benicia, California 94510
OPEN 11 AM - 5 PM
 Closed Monday
Z. E. LOPES 707-745-0978

VISIT HISTORIC BENICIA
 and its 28 shops
 Off Interstate #80
 North of San Francisco

RICHARD BENNETT
 64183 Warne Drive, Cambridge, OH 43725
 Phone: 614 / 432-4483
SPECIALIZING IN CAMBRIDGE GLASS
 Stagecoach Mall - Bldg. 3 - Norwich, OH

D & D ANTIQUES
 Columbus, Ohio
DICK SLIFKO **SHOWS ONLY**

JUDY'S ANTIQUES
Judy Bennett
 422 S. Ninth Street (Corner of Jefferson)
 Cambridge, Ohio 43725
BUYING Ph. 614-432-5855 SELLING
Cambridge Glass my Specialty

GREEN ACRES FARM
 2678 Hazelton Etna Rd., Pataskala, OH 43062
 (State Route 310 North)
 Sat. & Sun. 1-7 PM 614/927-1882
Antiques, Crystal Glass and Collectibles

BUY-SELL 513/390-3617
Taste of Honey
 Glassware—Collectibles
CLARKE & CAROLE WEST 3433 Turner Dr.
 Springfield, OH 45504

REMEMBRANCES
 7597 Daphne Dr., No. Syracuse, NY 13212
Shirley S. Ladouceur 315 / 458-5297
 ANTIQUES and COLLECTIBLES
MAIL ORDER SHOWS APPOINTMENTS

AL STEELE
 Westerville, Ohio
 614-882-6483 or 614-882-7124
 Mail Orders and Shows Only
HEISEY — CAMBRIDGE — PATTERN GLASS

CHARLES MIKULIK
 Box 416
 Elizabeth, N.J. 07207
— COLLECTOR —
 Always paying good prices for
CAMBRIDGE CAPRICE
 in all colors
 201-688-1144
CARRY MOST TYPES OF ANTIQUES

BERKELEY ANTIQUES
 69 Berkeley St., Boston, MA 02116
OPEN: Monday thru Saturday 11 AM to 5 PM
GEORGE & FRANK 617/426-1048
DUNCAN, CAMBRIDGE, HEISEY, GENERAL LINE

THE GLASS MENAGERIE
 212 Market Street
 Denton, Maryland 21629
Barbara & Bill Danels 301/822-8794
SPECIALIZING IN GLASSWARE OF THE DEPRESSION ERA

"Happiness Is" - The Stultzs
 3106 Warren Court, Glen Allen, VA 23060
 Shows and Mail (Richmond Area) 804/262-1273
GLASS CIRCA 1890-1960

MOSTLY HEISEY
 16 Clayton Place, Albany, NY 12209
Rhoda Curley 518 / 482-6272
SHOP and MAIL ORDER

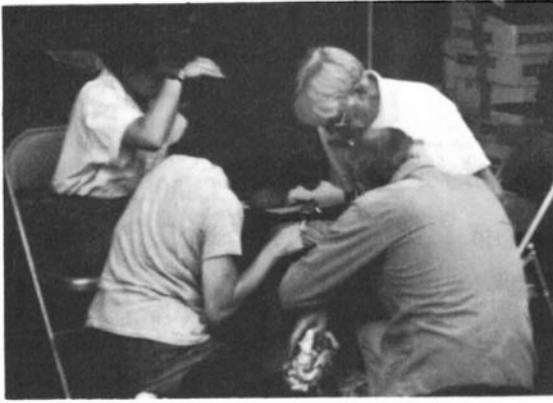
1886 HOUSE
 East Schodack, N.Y. 12063
MAIL and SHOWS
Laurie Cruise 518-477-5895
CAMBRIDGE - NORITAKE - AZALEA - D.G.

MARGARET LANE ANTIQUES
 2 E. Main St., New Concord, OH 43762
Lynn Welker 614/826-4418
CAMBRIDGE GLASS MATCHING SERVICE
 Hours Mon.-Fri. 1-5 PM or by Appointment

SKYLINE DRIVE ANTIQUES
 5432 Skyline Drive, Cambridge, OH 43725
Drew & Donna Davis 614 / 432-2621
SPECIALIZING IN CAMBRIDGE GLASS!
 Shows Mail Order Matching Service

Weekend of Fellowship, Food, Fun, and Fatigue

(photo's courtesy of B.J. Kersey)



Recording information found on the old etching plates required a magnifying glass at times. Shown here (clockwise) are: Rose Curnutt; Clarke West; Jim Curnutt; and Mary Scharf.

On the weekend of September 19-21, several members of the Cambridge Nudes Study Group, from the Chicago area, gathered at the home of Bill and Phyllis Smith, Springfield, OH, for a Cambridge Etching Plate cleaning session! It was very tiring and dirty work -- but equally fun and rewarding to see the etchings appear (many not seen before) as they were printed, after being cleaned. Approximately 130 additional plates were cleaned and printed.

For those of you who attended the Convention and had the opportunity to view the large book of etchings in the Display Room, you will understand the results of such a session as this. Soon we will have a second book ready to be viewed and studied by our members.

Only 800-900 plates to go!! HELP!!



Bill Smith and Jane Kersey using a wire brush on one of the steel etching plates.

Other members who worked but are not shown in the photo's are: B. J. Kersey; Tony Vimmer; Mark Smith; Carole West; and Phyllis Smith.

DATES FOR YOUR CALENDAR

NOVEMBER QUARTERLY MEETING

November 8, 1986

Cocktails 6 PM - Dinner 7 PM - Meeting 8 PM

PROGRAM

SPEAKER: Elizabeth Reeb, Museum Manager
National Road Zane Gray Museum

SUBJECT: "Glass Marbles"

ELKS CLUB

1048 Wheeling Ave., Cambridge, Ohio
(S.W. corner of Wheeling Ave., & 11th St.)

RESERVATIONS MUST BE MADE BY NOV. 1ST

ADDITIONAL DATES FOR YOUR CALENDAR

FEBRUARY QUARTERLY MEETING

Friday, February 27, 1987 - 8 PM

ALL-CAMBRIDGE GLASS AUCTION

Saturday, February 28, 1987

1987 N.C.C. CONVENTION

and

ANTIQUA SHOW & SALE

June 26, 27, 28, 1987

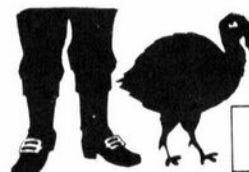
Museum Closing!

After November 9th, the MUSEUM will be CLOSED for the WINTER. It won't be open again until Auction weekend, February 28th!

N.C.C., Inc.
P.O. Box 416
Cambridge, OH 43725

FIRST CLASS MAIL

FIRST CLASS MAIL
U.S. POSTAGE
PAID
So Vienna, Ohio
45369
Permit No 15



NOVEMBER

1986