

# Cambridge



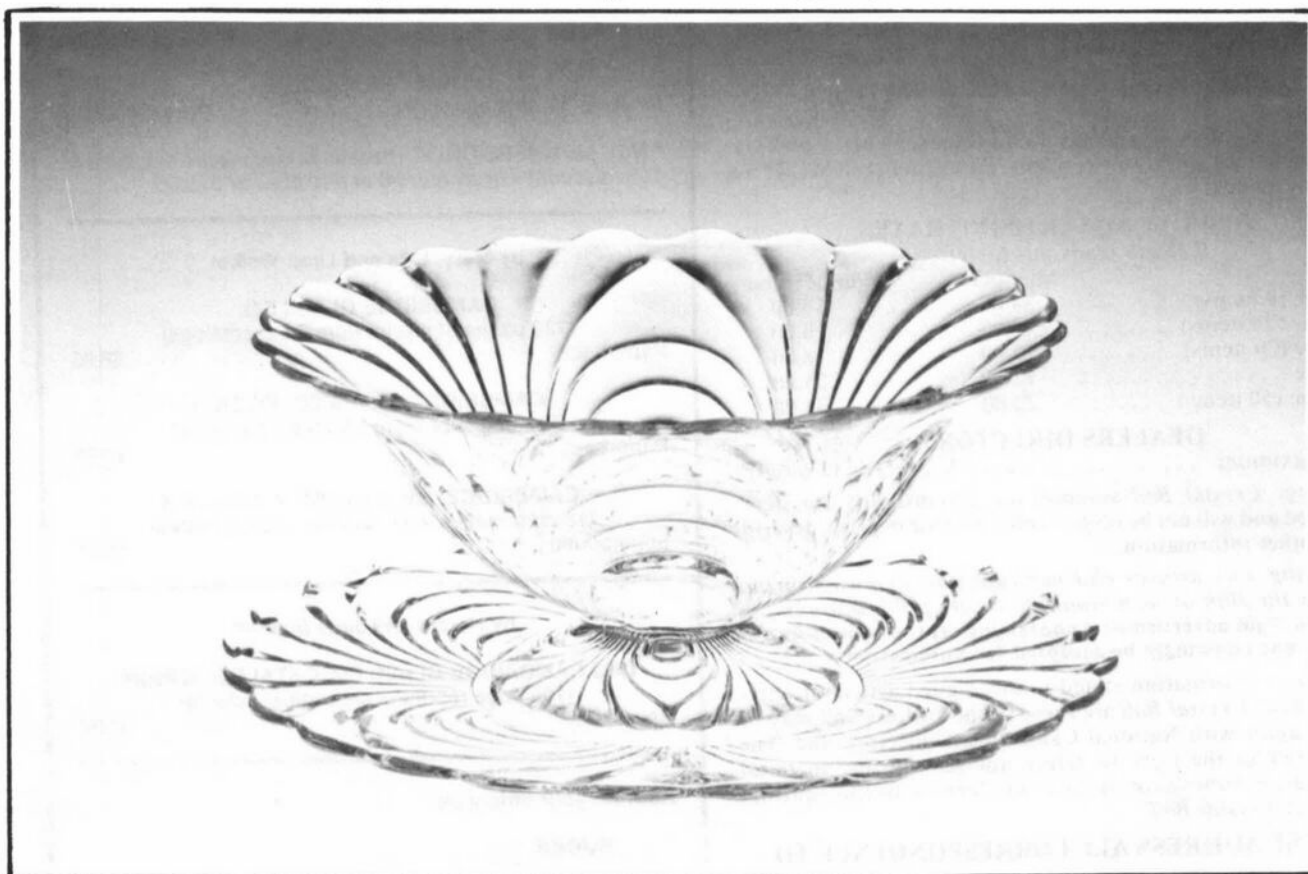
# Crystal Ball

ISSUE NO. 147

JULY 1985

Published monthly by the NATIONAL CAMBRIDGE COLLECTORS, Inc.  
To encourage and to report the discovery of the elegant and boundless product  
of the Cambridge Glass Company, Cambridge, Ohio

## Caprice Punch Bowl



MAY WE PRESENT, FOR THE VERY FIRST TIME . . . the lovely CAPRICE PUNCH BOWL!

### MEMBERSHIP RENEWAL NOTICE

If the date on your  
address label is..

7 - 85

This is your LAST ISSUE of the CRYSTAL BALL.  
Please renew NOW!

Photo courtesy of owners:  
John and Lenora McNabb, Missouri  
(see related story on page 3)

# CAMBRIDGE CRYSTAL BALL

Official publication of National Cambridge Collectors, Inc., a non-profit corporation with tax exempt status. Published once a month for the benefit of its members.

Membership is available for individual members at \$13 per year and additional members (12 years of age and residing in the household) at \$3 each. All members have voting rights, but only one *Crystal Ball* will be mailed per household.

Back issues of the *Crystal Ball* are available (beginning with Issue No. 1, May 1973) for members only. Cost \$5.60 each or 12 issues for \$7.

## 1984-85 OFFICERS & COMMITTEE CHAIRPERSONS

PRESIDENT .....	Willard P. Kolb
VICE-PRESIDENT .....	David B. Rankin
SECRETARY .....	Janice Y. Hughes
TREASURER .....	William C. Smith
SERGEANT-AT-ARMS .....	Marybelle Moorehead
BUDGET & FINANCE .....	David B. Rankin
BY-LAWS .....	David B. Rankin
CONVENTION .....	David B. Rankin
MEMBERSHIP .....	Phyllis D. Smith
MUSEUM .....	Billy Harbaugh
PROGRAM & ENTERTAINMENT .....	Frank Wollenhaupt
PROJECT .....	Willard P. Kolb
PUBLIC RELATIONS .....	William C. Smith
PUBLICITY .....	Joseph Andrejcek
STUDY GROUP ADVISOR .....	Evelyn M. Allen
1985 AUCTION .....	Lynn M. Welker
1985 ANTIQUE SHOW .....	Joy McFadden
1985 FLEA MARKET .....	Larry F. Hughes
CRYSTAL BALL EDITOR .....	Phyllis D. Smith

## CLASSIFIED ADVERTISING RATES

5c per word \$1.00 minimum  
We cannot mix type size in classified advertisements. Abbreviations and initials will count as words. Payment in full MUST accompany all ads.

## DISPLAY ADVERTISING RATES

(camera ready ads preferred)

	Members	Non-Members
1/8 page (9 items) .....	\$4.00	\$6.00
1/4 Page (20 items) .....	7.00	10.00
1/2 page (20 items) .....	12.00	18.00
3/4 page .....	17.00	25.00
Full page (50 items) .....	22.00	33.00

## DEALERS DIRECTORY

5 line maximum \$12.00 for 12 months  
Cambridge *Crystal Ball* assumes no responsibility for items advertised and will not be responsible for error in price, description or other information.

*Advertising copy, articles, club news and notices must be in our hands by the 10th of each month to assure publication in our next issue. Paid advertisements containing reproductions or new glass will not knowingly be accepted for publication.*

Opinions or information stated in any signed article or letter printed in the *Crystal Ball* are those of the authors and may or may not agree with National Cambridge Collectors, Inc. The Editor reserves the right to refuse and to edit any material submitted for publication so as to conform with the editorial style of the *Crystal Ball*.

## PLEASE ADDRESS ALL CORRESPONDENCE TO

National Cambridge Collectors, Inc.  
P.O. Box 416 Cambridge, Ohio 43725

**PRESIDENT:** Willard Kolb .... 614/695-0695

**SECRETARY:** Janice Hughes ... 614/432-7823

**EDITOR:** Phyllis Smith .... 513/323-3888

NCC MUSEUM of Cambridge Glass is located on U.S. Route 40, 1.8 mile east of I-77 near Cambridge. Hours: 12 noon to 4 PM - Wednesday thru Sunday. (March thru November)

PLEASE NOTIFY US IMMEDIATELY OF ANY CHANGE IN YOUR ADDRESS.

Please enclose a SASE when requesting information

# CAMBRIDGE GLASS BOOKS FOR SALE

by National Cambridge Collectors, Inc.

\* **COLORS IN CAMBRIDGE GLASS**  
(128 pages - 60 color plates - fully indexed)  
Hardbound with 1984 Price Guide \$19.95

\* **1930-34 CAMBRIDGE GLASS CO. CATALOG REPRINT**  
(250 page reprint of original catalog)  
Hardbound with 1982 Price Guide \$14.95

\* **1949-53 CAMBRIDGE GLASS CO. CATALOG REPRINT**  
(300 page reprint of original catalog)  
Hardbound with 1983 Price Guide \$14.95

\* **1956-58 CAMBRIDGE GLASS CO. CATALOG REPRINT**  
(164 page reprint of original catalog)  
Paperback \$6.95

**1982 PRICE GUIDE**  
for 1930-34 catalog reprint Postpaid \$2.25

**1983 PRICE GUIDE**  
for 1949-53 catalog reprint Postpaid \$2.25

\* **NCC MEMBERS ONLY:** *These publications are available at 10% discount - or all four (4) at one time for \$50.00.*

by Mary, Lyle and Lynn Welker

**CAMBRIDGE GLASS CO.**  
(120 pages of reprint from 8 old catalogs)  
Paperback \$6.95

**CAMBRIDGE GLASS CO. BOOK II**  
(119 pages of reprint from old catalogs)  
Paperback \$6.95

**CAMBRIDGE, OHIO GLASS IN COLOR II**  
(15 color pages with descriptions and notes)  
Spiralbound \$5.95

by Harold and Judy Bennett

**1903 CAMBRIDGE GLASS CO. CATALOG REPRINT**  
(106 page reprint of an original catalog)  
Paperback \$7.50

**Address your orders to:**

**BOOKS**  
National Cambridge Collectors, Inc.  
P.O. Box 416  
Cambridge, OH 43725

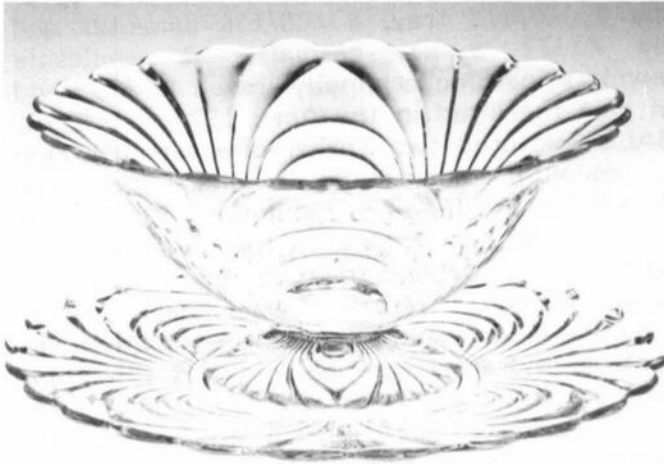
**Please add \$1.00 (P & I) per order.**  
(Not required for Price Guide)  
Ohio residents please add 6% state sales tax.

**DEALER DISCOUNTS AVAILABLE - PLEASE WRITE!**

# NOTES ON CAPRICE

by PHYLLIS SMITH

Many years ago, possibly as many as ten (probably more likely twelve), we visited an Antique shop in Cambridge, Ohio, and had the rare opportunity to see a Caprice Punch bowl "in person," as the saying goes! Unfortunately, at that time, we had no idea we were looking at what would turn out to be such a rare and unusual item.



"UP CLOSE" and almost "IN PERSON"

Being relatively new to the collecting game and for reasons I'd really rather not "fess" up to at this time (the word "stupid" does come to mind), we passed up this bowl with its \$100 price tag, telling ourselves that surely we would be able to buy one later at a more reasonable price! HA! Famous last words! From that moment to this . . . we've never seen another Caprice Punch bowl "in person!"

In all the information we have on Caprice, we have never found a picture of this Punch bowl, so we were particularly thrilled when we received the following letter and the photo's of the punch bowl from the McNabb's.

---

"Dear Phyllis, Since the #478 Caprice Punch bowl is rarely seen and to our knowledge never pictured, we would like to share a photograph of our newly acquired "treasure."

The footed bowl is 15" in diameter and holds 5 quarts. It is pictured sitting on a #30 -- 16" plate. Research previously published in the Crystal Ball says that neither punch cups nor an underplate was made specifically for this bowl. It has also been stated that production

occurred sometime between September 1953 thru the plant closing in June 1954 when Caprice was listed as being produced in crystal only.

Hope the picture reproduces well and does justice to this truly magnificent piece of glass.

Regards, John & Lenora McNabb, Missouri"

---

John and Lenora . . . can never say THANKS enough for sharing your punch bowl with all of us. . . . Oh yes, just so you will know that we have learned something these past ten or so years, just felt I should tell you . . . the very next time we come across a Caprice Punch bowl for \$100 . . . we plan to buy it!

---



CAPRICE #400 LINE (?)

This cute little crystal Caprice (?) juice glass has been loaned to the Museum and is on display now. It's owner, Clint Newman, Florida, wasn't absolutely positive if it was Cambridge or not, but like everyone else, felt that it had to be.

We cannot find it in a catalog, so we don't know what the stem line is, but we have a research reference from July 1939, that mentions a #400 Line of Caprice stemware which we have not seen pictured. Another reference from October 1938 mentions Caprice tumblers with a graduated line around the bottom to gauge a drink of liquor that would measure about 1 1/4 oz. The line around this little glass would approximate that volume.

The pattern and quality says "Cambridge," perhaps proof will come later.

# CAMBRIDGE DECANTERS

Part V by MARK NYE

In the last article of this current series (published in the May CRYSTAL BALL), a discussion of the decanters pictured in the 1940 Cambridge catalog was commenced. This month's article continues the coverage of decanters available from that catalog.

We'll start with two items from the #3400 line: #3400/113 35 oz. handled decanter, and the #3400/156 12 oz. decanter, both of which came with ground stoppers. The later decanter utilized the typical #3400 line stopper, round in shape and with the characteristic pattern, while the #3400/113 decanter has a stopper that appears unique to it and the #3400/118 decanter. This later decanter differs from the #3400/113 only in that it does not have the applied handle.



#3400/113 35 oz.



#3400/118 35 oz.

DECANTERS

Discontinued before 1940, the #3400/118 decanter was perhaps made in many of the same colors and with the same decorations as the handled #3400/113 version during the 1930s. However, known price lists do not support this and we will have to await the discovery of additional price lists from the 1930s to prove or disprove this theory.

The first picture of the #3400/113 decanter appeared in the 1933 Cambridge catalog supplement, and of the #3400/156 in the 1934 supplement. Both decanters, however, may date to 1931-32. While there is no catalog or price list reference for decorated #3400/156 decanters, the #3400/113 was offered etched Elaine, Diane and Portia in the 1940 catalog.



#3400/156  
12 oz.

DECANTER

Although by 1940 the #3400/113 decanter was being produced only in crystal and royal blue, other colors may have been utilized for this piece during the 1930s. The January 1940 price list offered the #3400/156 in crystal, amber, forest green, royal blue and amethyst. Again, other colors from the 1930s might be possible.

During the 1930s and into the 1940s, the #3400/156 decanter was sold by itself or as part of a set. The 1934 Cambridge catalog supplement pictured an 8-piece set made up of the #3500/112 tray, #3400/156 decanter and six #1327 1 oz. cordials. A wholesale jewelers' catalog originally issued in 1935 and in part reprinted in the April 1978 CRYSTAL BALL, pictured two Farberware sets utilizing a decanter identical in shape to the #3400/156 but listed as holding 18 oz. At this time, it is not known if the difference in stated capacity was due to the method of measurement or if the Farber Bros. had a separate mold made. Each set used three decanters in Farberware holders and the color choices were described thusly: "Sets come with glass in the following colors: Green, Amber, Amethyst, Blue." The sets were each called "Tantalus Set" and one came with a locking device. Quoting from the advertisement, "The owner of this set may have no fear of his servants drinking up his whiskies. He has them under lock and key."

To return to a decanter covered in Part I of this series, this same wholesale jewelers' catalog also pictured a decanter identical in shape to the 32 oz. #3400/92 Ball shape decanter, but listed as holding 38 oz. and shown in a Farberware holder. In one illustration it was shown with 1 oz. brandies made up of a #3126 bowl and a metal stem. In another picture, the same decanter was accompanied by 2 oz. flat tumblers in metal holders. Both sets came with a metal tray and the color availability was the same as given above for the #3400/156 set.

Production of the #3400/113 and the #3400/156 decanters ceased sometime during the 1940s with royal blue and forest green items no longer being made after 1943.

The #1388 28 oz. handled and footed decanter is simply a variant of the #1321 sherry decanter discussed in Part I.

continued on next page



CAMBRIDGE DECANTERS. . . . . continued

The #1388 has an applied handle, a pouring spout and uses a different style of ground stopper with a body shape that is identical to the #1321. Even though the first known Cambridge catalog illustration of the #1388 is in the 1934 catalog supplement, it may go back a few more years since #1321 decanters were in production by 1931.

The #1388 decanter is not shown etched in the 1930-34 catalog nor is it listed etched or otherwise decorated in the 1940 price list.

However, this does not rule out the possibility it was etched during the mid-to-late 1930s. During the late 1930s, at least, the rock crystal cuttings Lucia, Laurel Wreath, Exeter, Concord and Lexington were used to decorate the #1388 decanter. In addition to these decorations, this decanter was illustrated in the 1934 catalog supplement with a cut neck.

Colors listed in 1940 for the #1388 decanter were crystal, amber, forest green, royal blue and amethyst. Earlier production in the 1930s pastels and perhaps even carmen cannot be ruled out. Like all decanters in this article, production of the #1388 had ceased by 1949.



#1387 14 oz. Unfortunately, no information about the 14 oz. size regarding color and decorations has been found.

While not available in 1940, (having been already discontinued) there is a 14 oz. version of the #1388. Known as the #1387, it was first pictured in the 1934 Cambridge Catalog supplement. Identical in every way except size to the #1388, the #1387 was probably intended to be a cordial decanter.

Our next item is from the Pristine line and it is the Pristine #85 28 oz. footed decanter with a cut top stopper, polished in. In all probability made only in crystal and with the

typical Pristine foot, this decanter would have been made first in 1936-37 and was dropped from the Cambridge line during the 1940s.



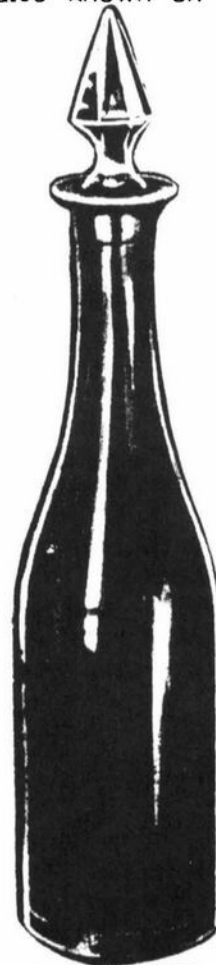
#1388 28 oz. Cut Neck



Pristine #85 28 oz. DECANTER

During the late 1930s and possibly continuing into the early 1940s, the P85 decanter was decorated with the rock crystal cuttings Fantasy, Strawflower, Killarney, Neo Classic, The Pines, Etruscan and Grecian. Three other cuttings, Sunburst, Lexington and Bexley are also known on this decanter and these were

possibly done during the early 1940s. The P85 decanter was also decorated with the decorations D/1050, etched Laurel and gold encrusted, and D/450 Astoria.



Pristine #90 or #1372 28 oz. DECANTER

Based on its number, the tall bottle like decanter known as #1372, would date to the early 1930s. However, no picture of it appears in the 1930-34 catalog as reprinted by the NCC, Inc. While it is also given the designation Pristine #90 in the 1940 catalog and included in the Pristine listings as #90 28 oz. tall decanter, cut stopper-polished in, this decanter is not readily identified with the Cambridge Pristine line.

The P90 or #1372 decanter was either a popular one or Cambridge hoped it would be since it was extensively used for etchings. Minerva, Valencia, Wildflower, Elaine, Diane, Portia and Rose Point were all placed on this

continued on page 6

CAMBRIDGE DECANTERS . . . . .  
. . . . . continued from page 5

decanter during the late 1930s and, except for the first two, also during the early 1940s.

Made only in crystal during the late 1930s and early 1940s, it was also available with D/1014 gold edged and etched Elaine and, D/1041 Rose Point with a gold edge.

It is known the P90 decanter was also decorated with the rock crystal cuttings Adonis and Croesus during the late 1930s.

In Part IV of this series of articles, I mentioned that the #1542 Life Saver decanter was known with a cutting, but provided no additional information. Research done since that article was written has identified two cuttings that can be found on the Life Saver decanter. These are #1039 and #1047 (see page 7). The references found so far for these cuttings do not provide a name.

. . . . . to be continued

---

**EDITOR'S NOTE:** The new research material that Mark is referring to above, involves additional catalog information which has been donated to N.C.C. by Gilbert Glasgow, a long-time employee of Imperial Glass Company. These pages have been photographed and will be printed in the CRYSTAL BALL just as fast as space permits.

They have also been copied and put into plastic holders in a notebook. Members visiting our Museum may look at them, when they visit, by making arrangements with our Museum employee Mildred Hughes. The majority of these pages have to do with Rock Crystal Engravings that we have heretofore never seen. Pages 7, 8, 9 and 10 of this issue are from this new material.

THE 1940 CATALOG

While I'm on the subject of research information, perhaps this would be a good time to explain to those of you who continue to read in articles all these references to the 1940 catalog . . "just what and where it is!"

For years, we have had access to only one

copy of this catalog. This copy has always been available during Convention and almost every Quarterly meeting for anyone to look at . . . even tho it is privately owned. It's a good thing the Cambridge Glass Company used good paper when they had that catalog printed . . otherwise it would never have withstood all of the use it has endured. We have reprinted many, many of it's pages in the CRYSTAL BALL and will continue to do so.

It is for the year 1940 and has supplemental pages up thru 1942 that the owners have managed to pick up over the years. Reprinting it has been proposed and rejected many times because of its size (approximately 400 pages) and the fact that there is very little information in it that has not been previously published, either in the three NCC Catalog Reprints, the Welker Reprints, or in the CRYSTAL BALL. Very little, if any, really new information would be found.

With the closing of Imperial and Mr. Glasgow's generosity, we have acquired two 1940 catalogs for the Museum. However, neither catalog is complete. We have combined the pages from these two catalogs into one comprehensive volume (using a few pages from the privately owned catalog where necessary) and have put together one good catalog which we have had copied (on a good machine). From the three catalogs, we believe that we now have a complete 1940 Catalog, with many supplemental pages included.

These copied pages have been put into plastic protectors, in notebooks, and will be available to our members who visit the Museum and wish to take the time to look at them. I am not sure as I write this if these will be available by Convention time or not, but hopefully once our new storage building is up and we can spare the room for a table, there will be space for study in the Museum. It will be a good idea to call ahead and make arrangements with Mrs. Hughes if you plan to spend much time there.

---

VISIT YOUR MUSEUM of CAMBRIDGE GLASS

HOURS

Wednesday thru Sunday: 12 noon to 4 p.m.  
Closed Monday and Tuesday!

MUSEUM PHONE NUMBER: 614/432-4245

---



# The Cambridge Glass Company



## Rock Crystal



P92—26 oz. Decanter  
R. C.—1043



1378—26 oz. Decanter  
R. C.—1040



P91—26 oz. Decanter  
R. C.—1042



1542—20 oz. Decanter  
(Life Saver)  
R. C.—1047



1379—26 oz. Decanter  
R. C.—1041



1542—20 oz. Decanter  
(Life Saver)  
R. C.—1039

Cambridge, Ohio - - - U. S. A.





# The Cambridge Glass Company



## ROCK CRYSTAL

Note: All stoppers cut and polished in, except in 1323, which is polished in only.



1323—28 oz. Decanter  
R. C. Bexley



1323—28 oz. Decanter  
R. C. Lexington



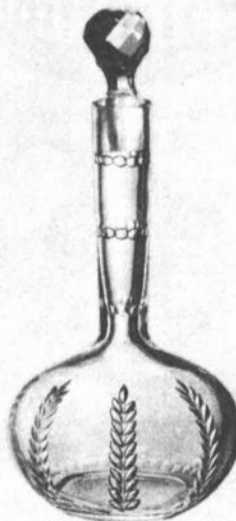
P 92—26 oz. Decanter



P 91—26 oz. Decanter



1386—30 oz. Decanter  
R. C. Moreno



1386—30 oz. Decanter  
R. C. Lexington



1386—30 oz. Decanter  
R. C. Bexley



1380/1—26 oz. Decanter  
Square  
R. C. Moreno



1380/1—26 oz. Decanter  
Square  
R. C. King Edward



1380/1—26 oz. Decanter  
Square  
R. C. Manor



1322—26 oz. Decanter  
Cut Neck, Cut Flutes

Cambridge, Ohio - - - U. S. A.





# The Cambridge Glass Company



## ROCK CRYSTAL

Note: All stoppers in Decanters shown on this page are cut and polished in.



1321—28 oz. Decanter  
R. C. King Edward



1321—28 oz. Decanter  
R. C. Lexington



P 85—28 oz. Decanter  
R. C. Bexley



P 85—28 oz. Decanter  
R. C. Lexington



1395—28 oz. Cocktail Mixer  
Chrom. Plated Top & Spoon  
R. C. Bexley



1395—28 oz. Cocktail Mixer  
Chrom. Plated Top & Spoon  
R. C. Lexington



1395—28 oz. Cocktail Mixer  
Chrom. Plated Top & Spoon  
R. C. Moreno



98—46 oz. Cocktail Shaker  
Chrom. Plated Top  
R. C. Lexington



3400/175—54 oz. Cocktail Shaker  
Chrom. Plated Top  
R. C. Moreno



98—46 oz. Cocktail Shaker  
Chrom. Plated Top  
R. C. Bexley



98—46 oz. Cocktail Shaker  
Chrom. Plated Top  
R. C. Moreno

### Cambridge, Ohio - - - U. S. A.



# The Cambridge Glass Company



## Sunburst (1002)



321—1½ oz. Tumbler  
(Shammed)



497—4½ oz. Tumbler  
(Shammed)



321—O. F. Cocktail  
(Shammed)



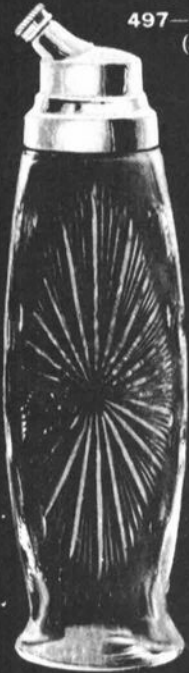
497—8 oz. Tumbler  
(Shammed)



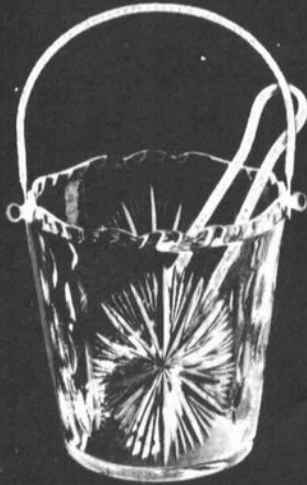
497—12 oz. Tumbler  
(Shammed)



497—13 oz. Tumbler  
(Shammed)



98 Cocktail Shaker  
W/Chrom. Top



957 Ice Pail  
W/Hdl. & Tongs



P. 671  
Ice Tub with Tongs



7801—5 oz. Ftd.  
Cocktail



7966—2 oz. Sherry  
also  
1 oz. Cordial



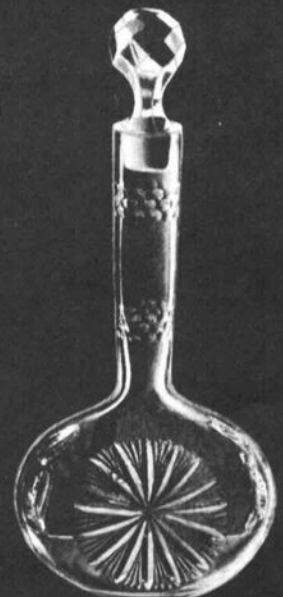
1323/1—28 oz. Decanter



P. 85—28 oz. Decanter



P. 89/7—28 oz. Decanter



1386/1—30 oz. Decanter

Cambridge, Ohio - - - U. S. A.

# THOUGHTS from your President . . .

If all goes well, and the weatherman does not interfere, the contractor will start work on the new building on Monday, June 10th.

It should be completed in about a week, except for the concrete floor, and we should have at least part of our loot moved into it by Convention. Those of you fortunate enough to have attended Convention will have seen it! For those of you not able to attend, we will publish a picture (probably in the next issue) of the new building.

It sure would have been nice if we could have had the building up before we started hauling the molds out of Imperial. We could have taken them there and saved a lot of extra work. Now we have to go through the same thing again. Load those heavy monsters up again and unload them again at what we hope will be their final resting place. As they are scattered out so much now, it is probably going to take much more time now than it did when we moved them from Imperial. Just don't forget that Rome wasn't built in a day. It is going to take even longer to properly catalog all of this. We will be looking for a lot of volunteers all through both segments.

As in any organization such as this, rumors seem to abound. It is, as I see it, a normality! One rumor that is going around (and I have been approached about it both personally and by phone) is that we are selling reproductions made by Summit Art Glass Company in our Museum and a lot of members are upset about it. This is only partly true.

Back in November 1984, long before molds were being sold at Imperial, we bought some of the production from Summit that they had produced from molds borrowed from Imperial, in I believe September. These items were from the Caprice salt dip mold and the 6 1/2" swan mold . . . in Rubina, Watermelon, Amberina and Cobalt. Since these were on the market we saw no reason why we shouldn't buy some of them and sell them in the Museum to raise money. None of it is from production that came about after the liquidation.

Our present plans are to continue the sale of these items, however each item is being marked by us, with a diamond marker, with the date of manufacture, "'84", before it is ever offered for sale. Just wanted to set the stories straight.

Hope all of you who attended the Convention and Show & Sale found that elusive piece of Cambridge to take home with you. For those of you who were unable to attend, perhaps next year will be your lucky year.

It's not too early to make plans to attend the August Picnic Quarterly Meeting at the Museum grounds. Dates will be announced in the August CRYSTAL BALL. By then we should have lots for you to see in the new building.

WILLARD

---

Because of Conventions and vacations, the August issue of the Cambridge CRYSTAL BALL may be a few days late!



# Study Club News

## STUDY GROUP #5 - SOUTHERN CALIFORNIA "CALIFORNIA CAMBRIDGE COLLECTORS"

California Cambridge Collectors held their meeting May 17th in the home of Jim and Joan McDowell, with six members and two guests present.

Since our group is so small, we do not have our meetings as frequently. This meeting we always enjoy, however, since it is our annual silent auction.

The members contributed many exceptional pieces of Cambridge and other glass. Our President, Bill Losch and his wife Betty contributed a 52 piece set of Royal Albert Tea Rose china. Since one of our members (namely me) could not resist it, it was quickly bid upon with the proceeds going to the National Cambridge Club. We were able to contribute a total of \$500 this year. Quite an achievement for so few members. Also, thanks to Bill & Betty.

Beverley Hanson brought along a moonlight blue Caprice ice bucket and moonlight blue mushroom type cordials for Show & Tell. Bill and Betty shared some #3400 carmen goblets, a pink #3400 divided relish, a Nautilus carmen perfume bottle, a royal blue Nude stem ash-tray, a crown tuscan Nautilus sugar bowl, mandarin gold Wildflower candy dish and lid in a filigreed holder, and a royal blue Caprice vase. It must be nice to be retired and have time to search out all those treasures.

We will have our next meeting in August at Beverley's house.

submitted by Joan McDowell

## STUDY GROUP #10 - LONG ISLAND, NY "THE TUSCAN CROWNS"

Phone: Charles or Loretta at 516/589-9168

Tuscan Crowns held their May meeting at the home of Gloria and Palmer Bunger.

Topic of conversation was the repros made from the Cambridge molds. Seen so far were the cobalt Bashful Charlotte and Caprice blue sugar/creamer/tray - considerably heavier. Also the 8 1/2" and 6 1/2" swans in cobalt.

Plans for our 2nd Annual All-Glass Show and

Sale sponsored by the Cambridge Study Group are underway. The show will once again be held Thanksgiving weekend.

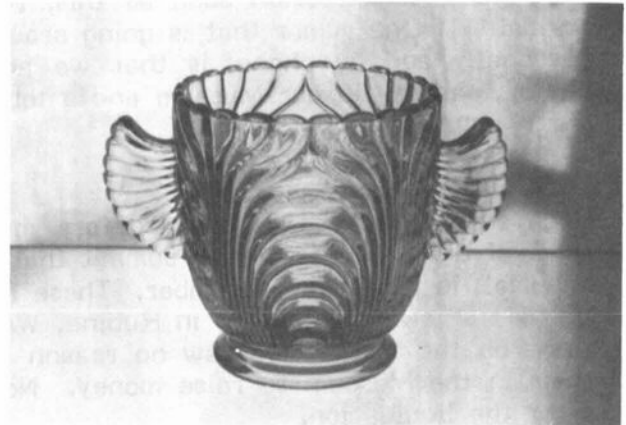
Show & Tell items for May were plentiful: gold krystal Apple Blossom vase; large Rose-point vase, Doulton shape; Diane etched crown tuscan 3-part covered candy; large Buddha lamp in amber; crystal Nude compote shell; carmen Georgian basket; large emerald Nude compote shell; blue Caprice Ball jug and tumblers; -- just to name a few.

submitted by Rita Berg

## ANOTHER CAMBRIDGE CONFUSABLE

by PHYLLIS SMITH

Go ahead . . . no point in your being any different from the rest of us. Do a double take . . . . . Is it Cambridge?



NO, it's not Cambridge, but it certainly looks enough like the Caprice pattern to give you cause to pause for a moment.

At first glance it looks like Caprice, but then, at second glance you realize that something isn't quite right with those handles. . . . The glass itself is a very pretty light blue that would be hard to tell from Moonlight, and the quality isn't really all that bad either.

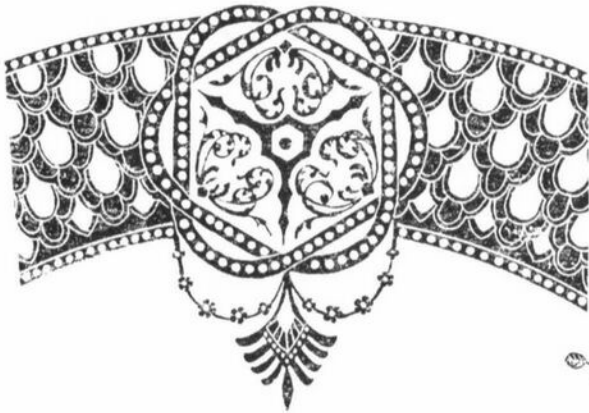
Give up? Turn it over on the bottom and there's your answer. Molded into the glass is the word JAPAN!

According to the nice folks who gave it to us, Eunice and Frank Sclafani from Florida, they have had it for several years, so it is not something that is being made today. It came in a set, but we have just the one piece. It is in the Museum -- study it next time you visit there. . . . THANKS AGAIN Eunice and Frank!

ETCHINGS IDENTIFIED



Etching #707



Etching #708

1910 "NEAR CUT" CATALOG REPRINT

Price Guide Included

108 page, soft bound, sharp pictures and clear print, copy of an original Cambridge Glass Company Catalog.

Featuring: *Marjorie, Feather, Lotus, Dorothy, Star, Colonial, Guernsey, Ribbon, Paul Revere, Radium, Fernland, Wheat Sheaf, and many other patterns.*

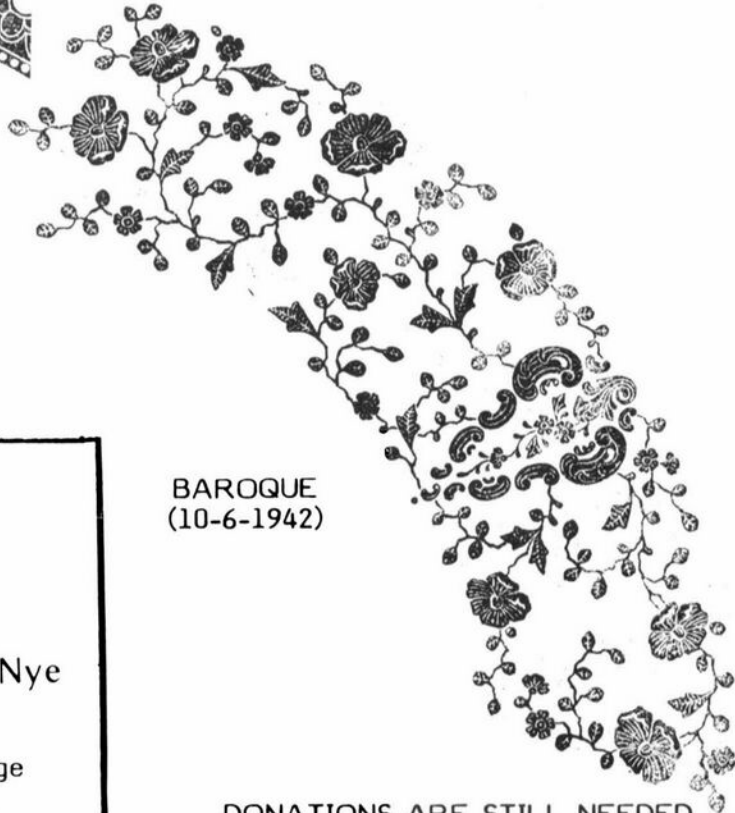
PUBLISHED BY

Cambridge Buffs Study Group No. 7

Send \$9.95 plus \$1 shipping (Ohio residents add 6% sales tax) to:

Cambridge Buffs Study Group  
P.O. Box 248  
Cambridge, OH 43725

"All Profits to support of NCC Museum"



BAROQUE  
(10-6-1942)

DONATIONS ARE STILL NEEDED  
PLEASE HELP!

Cambridge

Stemware

by Mark Nye

PRICE \$14.95

please add \$1.00 extra for postage

Order from: MARK NYE, Dept. CB,  
P.O. Box 65-1569, Miami, FL 33265.

FENTON ART GLASS COLLECTORS OF  
AMERICA, INC.

ANNUAL CONVENTION  
August 6, 7, 8, 9, 1985

Marietta, Ohio

For information write:  
FAGCA, Inc.  
P.O. Box 384  
Williamstown, WV 26187

MOSTLY  HEISEY

RHODA CURLEY  
16 Clayton Place, Albany, NY 12209

HEISEY and CAMBRIDGE

OUR SHOP: "Worth a Trip From Anywhere!"

By Appointment

518/482-6272

## STAGE COACH ANTIQUE MALL

*(formerly White Pillars Antiques)*

Doris & Roy Isaacs

7525 East Pike  
Norwich, OH 43767  
614/872-3720

MANY DEALERS. . .

PLENTY OF PARKING. . .

WIDE SELECTION OF GLASS  
AND POTTERY  
FURNITURE AND  
GENERAL LINE!

BUY and SELL

OPEN YEAR ROUND  
Weekdays - 10 AM - 5:30 PM  
Sunday - 12 noon - 5:30 PM  
Summer Evening Hours - by Chance!

Located 9 miles E. of Zanesville, OH, on I-70 to Nor-  
wich Exit No. 164 - then 1/2 mile W. on Route 40.



ELEVENTH ANNUAL  
SHOW AND SALE  
DEPRESSION ERA GLASSWARE  
CHINA AND POTTERY  
at the

LAKELAND CIVIC CENTER  
700 W. Lemon Street  
Lakeland, Florida

SATURDAY, JULY 13, 1985  
from 10:00 a.m. to 6:00 p.m.

SUNDAY, JULY 14, 1985  
from 11:00 a.m. to 5:00 p.m.

The most important glass event in Florida in '85  
featuring

CAMBRIDGE, DUNCAN & MILLER, FENTON, FOSTORIA,  
HEISEY, IMPERIAL and other DEPRESSION ERA GLASS-  
WARE AS WELL AS CHINA AND POTTERY OF THAT ERA.

40 Select U.S. dealers with  
quality items to intrigue  
the beginner, service the  
collector and cater to  
the connoisseur.

Seminars on:  
Heisey - Dick Spencer  
Cambridge - Mark Nye  
Displays - Door Prizes

Directions: From I-4 take Exit 17 South directly to the Civic  
Center.

Admission: \$2.50/each day  
.50¢ discount with this flyer

Information  
(813) 682-1715

## — Classified —

**BUYING:** CAPRICE blue or Rosepoint by  
Cambridge, Rose or Orchid by Heisey,  
American, June, Fairfax, Versailles, Trojan,  
etc., by Fostoria and Depression Glass in  
crystal or colors. Nadine Pankow, 207 S.  
Oakwood, Willow Springs, IL 60480.  
312/839-5231.

**NEED:** one light blue sherbet, Cambridge  
Decagon. Please send price information to:  
Sandra Repp, 523 West 112th Street #82, NYC  
10025.

*"A man who neglects his duty as a citizen  
is not entitled to his rights as a citizen."*  
TIORIO

## HAPPY

## FOURTH OF JULY



# DEALERS



# DIRECTORY

NOTE: When writing to the Dealers listed here, please enclose a SASE!

<p><b>EVELYN M. ALLEN</b> 135 Cynthia Street Heath, Ohio 43055 Mail Order &amp; Shows 614-522-1635 <b>SPECIALIZING IN CAMBRIDGE GLASS!</b></p>	<p><b>BENICIA ANTIQUE SHOP</b> 305 First Street Benicia, California 94510 <b>OPEN 11 AM - 5 PM</b> Closed Monday Z. E. LOPES 707-745-0978</p>	<p><b>CHARLES MIKULIK</b> Box 416 Elizabeth, N.J. 07207 <b>— COLLECTOR —</b> Always paying good prices for <b>CAMBRIDGE CAPRICE</b> in all colors 201-688-1144 <b>CARRY MOST TYPES OF ANTIQUES</b></p>
<p><b>ANDREJCAK'S ANTIQUES</b> 14533 Bayes Ave. Lakewood, Ohio 44107 Joe &amp; Karen Andrejcek 216-226-3417 <b>SHOWS ONLY — CAMBRIDGE — FENTON — CHINA</b></p>	<p><b>VISIT HISTORIC BENICIA</b> and its 28 shops Off Interstate #80 ..... ..... North of San Francisco</p>	
<p><b>ABRAHANTE'S Matching Service</b> Discontinued China, Crystal &amp; Flatware Patterns 7288 S.W. 40th Street Miami, FL 33155 PHONE: 305 / 262-7336 <b>BUY &amp; SELL</b></p>	<p><b>RICHARD BENNETT</b> 64183 Warne Drive, Cambridge, OH 43725 Phone: 614 / 432-4483 <b>SPECIALIZING IN CAMBRIDGE GLASS</b> Stagecoach Mall - Bldg. 3 - Norwich, OH</p>	<p><b>BERKELEY ANTIQUES</b> 69 Berkeley St. Boston, MA 02116 George or Frank 617-426-1048 <b>CAMBRIDGE, HEISEY, GENERAL LINE</b></p>
<p><b>BLUE BONNET SHOPPE</b> at The Main Place 102 West Mistletoe at Main San Antonio, TX 78212 512/736-4900 <b>Antiques, Crystal, Collectibles! Open 7 days!</b></p>	<p><b>D &amp; D ANTIQUES</b> Columbus, Ohio <b>DICK SLIFKO SHOWS ONLY</b></p>	<p><b>THE FLOWER FROG</b> 106 E. Cairo Dr., Tempe, AZ 85282 <b>MAIL ORDER and SHOWS</b> Pat Binkley 602/967-1373 <b>CAMBRIDGE HEISEY FOSTORIA</b></p>
<p><b>THE GLASS CUPBOARD</b> 39 Shire Oaks Drive Pittsford, New York 14534 Marcia Ellis 716-586-7596 <b>CAMBRIDGE ONLY INQUIRIES INVITED</b></p>	<p><b>JUDY'S ANTIQUES</b> Judy Bennett 422 S. Ninth Street (Corner of Jefferson) Cambridge, Ohio 43725 <b>BUYING Ph. 614-432-5855 SELLING</b> <i>Cambridge Glass my Specialty</i></p>	<p><b>"Happiness Is" - The Stultzs</b> 3106 Warren Ct., Glen Allen, VA 32060 Shows and Mail (Richmond Area) 804/262-1273 <b>GLASS CIRCA 1890-1960</b></p>
<p><b>PEG AND DALE GOTSCHALL</b> 833 N. 6th Street, Cambridge, OH 43725 <b>ANTIQUES and COLLECTABLES</b> including quality crystal and colored glass Hours by Chance or Appointment 614/432-5529</p>	<p><b>GREEN ACRES FARM</b> 2678 Hazelton Etna Rd., Pataskala, OH 43062 (State Route 310 North) Sat. &amp; Sun. 1-7 PM 614/927-1882 <b>Antiques, Crystal Glass and Collectibles</b></p>	<p><b>HENDERSON'S ANTIQUES</b> 303 Guilford Ave., Woodsfield, OH 43793 Mary &amp; Wilbur 614/472-1133 <b>SPECIALIZING IN CAMBRIDGE GLASS</b> Shows, Mail &amp; Stagecoach Antique Mall</p>
<p><b>THE HITCHING POST</b> 7467 S. R. 88 Ravenna, OH 44266 Ph. 216-296-3686 D. McDaniel <b>CAMBRIDGE — HEISEY — GENERAL LINE</b></p>	<p><b>GEORGE HOFFMAN ANTIQUES</b> 129 South 4th Street Newark, Ohio 43055 614-345-8021</p>	<p><b>1886 HOUSE</b> East Schodack, N.Y. 12063 <b>MAIL and SHOWS</b> Laurie Cruise 518-477-5895 <b>CAMBRIDGE - NORITAKE - AZALEA - D.G.</b></p>
<p><b>L &amp; M ANTIQUES</b> 1331 S.E. 4th Ave., Pompano Beach, FL 33060 Lydia &amp; Cliff McNeil 305/943-2274 <b>CAMBRIDGE &amp; FOSTORIA OUR SPECIALTY</b> Buy &amp; Sell Shows Only</p>	<p><b>SHIRLEY S. LADOUCEUR</b> Antiques and Collectibles Specializing in Cambridge Glass <b>BY APPOINTMENT 7597 Daphne Drive</b> 315-458-5297 No. Syracuse, NY 13212</p>	<p><b>MARGARET LANE ANTIQUES</b> 2 E. Main St., New Concord, OH 43762 Lynn Welker 614 826-4418 <b>CAMBRIDGE GLASS MATCHING SERVICE</b> Hours Mon.-Fri. 1-5 PM or by Appointment</p>
<p><b>THE COUNTRY PEDDLER ANTIQUES</b> 111 W. Main St., New Concord, OH 43762 <b>JACK &amp; SHARON BOGART PHONE 614/826-7439</b> <b>BUY SELL APPRAISE REFINISH</b> General Line-Cambridge Glass</p>	<p><b>AL STEELE</b> Westerville, Ohio 614-882-6483 or 614-882-7124 Mail Orders and Shows Only <b>HEISEY — CAMBRIDGE — PATTERN GLASS</b></p>	<p><b>SKYLINE DRIVE ANTIQUES</b> 5432 Skyline Drive, Cambridge, OH 43725 Drew &amp; Donna Davis 614 / 432-2621 <b>SPECIALIZING IN CAMBRIDGE GLASS!</b> Shows Mail Order Matching Service</p>

COLUMBUS, OHIO

1985 7th Annual

GLASS  
 SILVER  
 CUT GLASS  
 PRIMITIVES  
 PRESSED GLASS  
 CHINA  
 HEISEY  
 FURNITURE  
 DUNCAN  
 PRINTS  
 IMPERIAL  
 CAMBRIDGE  
 POTTERY  
 BOOKS  
 D. G. GLASS  
 WESTMORELAND  
 TINS  
 JEWELRY  
 LINENS  
 FOSTORIA  
 QUILTS  
 HUMMELS  
 PAPER ITEMS  
 VICTORIANA  
 NOVELTY GLASS  
 PAPERWEIGHTS

# Antique & GLASS BASH

SHOW  
&  
SALE

**AUG. 3 & 4**

60 Quality Glass and Antique Dealers

## ALADDIN TEMPLE

1-270 AT 3850 STELZER RD

1/2 BLOCK OFF MORSE RD. EXIT

Admission \$2.50 — good both days

- GUEST AUTHORS
- FREE PARKING
- DISPLAYS
- AIR CONDITIONED
- DOOR PRIZES
- FOOD ON PREMISES

• Bring your glass to be repaired while you shop •

Shaeffer Shows, P. O. Box 542, Marietta, OH 45750, (614) 374-2719



Sat  
10 AM - 7 PM

Sun  
11 AM - 4 PM

## QUARTERLY MEETING NOTICE

**WATCH  
THIS SPACE  
NEXT MONTH  
FOR  
DETAILS AND  
DIRECTIONS**

**VISIT YOUR MUSEUM**

National Cambridge Collectors, Inc.  
P. O. Box 416 Cambridge, Ohio 43725

FIRST-CLASS MAIL  
U.S. POSTAGE  
**PAID**

Cambridge Ohio  
43725  
Permit No. 1

**FIRST CLASS MAIL**



JULY

1985