

# Cambridge



# Crystal Ball

ISSUE NO. 142

FEBRUARY 1985

Published monthly by the NATIONAL CAMBRIDGE COLLECTORS, Inc  
To encourage and to report the discovery of the elegant and boundless product  
of the Cambridge Glass Company, Cambridge, Ohio

## THOUGHTS FROM YOUR PRESIDENT . . . . .

Now that the long Holiday Season is over, we can start looking forward to a busy year for NCC and hopefully another successful one. Thanks to a dedicated membership, a dedicated Board of Directors and Officers, Editor and Chairpersons, 1984 was another "Banner Year" for NCC!

There are always "little nagging problems" that pop up, but for the most part I think the growing pains are behind us. Everything seems to be going a lot smoother here lately. I think most of this can be attributed to the fact that we have a MUSEUM now. It seems we are not always groping in the dark as to what decisions to make. The MUSEUM is there and our goal is rather simple now . . . to keep improving and expanding it! Our only desire now is to make our MUSEUM the finest of its kind, and one that the membership can be proud of. This will enhance the success of our other goal . . . to increased our membership and to continue to provide them with valuable information concerning Cambridge Glass!

Perhaps our biggest success stories of 1984 were the addition to the MUSEUM (although this was started in 1983), and the emergence of the "Colors in Cambridge Glass" book. The color book sales, along with monies realized

from a successful Auction, Antique Show, Flea Market and other money raising activities will allow us to go ahead with completing the interior of the new addition in 1985. I don't know about you, but it makes me feel great to be a part of an organization like this. One that, since its inception, has moved ahead year after year. Oh yes, there is one other facet of this organization, that I must not forget to mention . . . we also owe much of our success to our Study Groups! They seem to be competing with each other, finding ways to make NCC the best. All efforts are greatly appreciated!

## IMPORTANT NOTICE

Now is the time for you to submit the monies that YOU HAVE PLEDGED for the purchase of Cambridge molds.

At present, it does not appear that it would be realistic to attempt to purchase all of the molds, but there are many that it would be desirable for us to own. The factor that controls the volume of our purchase is Cash MONEY!

To those of you that have not indicated support for this project, we now extend our plea for your assistance also. The generosity of all NCC members is a requirement for the success of this venture!

### MEMBERSHIP RENEWAL NOTICE

If the date on your address label is **2 - 85**

This is your LAST ISSUE of the CRYSTAL BALL.  
Please renew NOW!

I was doing quite well, I thought, at getting

# CAMBRIDGE CRYSTAL BALL

Official publication of National Cambridge Collectors, Inc., a non-profit corporation with tax exempt status. Published once a month for the benefit of its members.

Membership is available for individual members at \$13 per year and additional members (12 years of age and residing in the household) at \$3 each. All members have voting rights, but only one *Crystal Ball* will be mailed per household.

Back issues of the *Crystal Ball* are available (beginning with Issue No. 1, May 1973) for members only. Cost \$.60 each or 12 issues for \$7.

**1984-85 OFFICERS & COMMITTEE CHAIRPERSONS**

PRESIDENT .....	Willard P. Kolb
VICE-PRESIDENT .....	David B. Rankin
SECRETARY .....	Janice Y. Hughes
TREASURER .....	William C. Smith
SERGEANT-AT-ARMS .....	Marybelle Moorehead
BUDGET & FINANCE .....	David B. Rankin
BY-LAWS .....	David B. Rankin
CONVENTION .....	David B. Rankin
MEMBERSHIP .....	Phyllis D. Smith
MUSEUM .....	Billy Harbaugh
PROGRAM & ENTERTAINMENT ...	Frank Wollenhaupt
PROJECT .....	Willard P. Kolb
PUBLIC RELATIONS .....	William C. Smith
PUBLICITY .....	Joseph Andrejcek
STUDY GROUP ADVISOR .....	Evelyn M. Allen
1985 AUCTION .....	Lynn M. Welker
1985 ANTIQUE SHOW .....	Joy McFadden
1985 FLEA MARKET .....	Larry F. Hughes
CRYSTAL BALL EDITOR .....	Phyllis D. Smith

## CLASSIFIED ADVERTISING RATES

5c per word \$1.00 minimum  
 We cannot mix type size in classified advertisements. Abbreviations and initials will count as words. Payment in full MUST accompany all ads.

## DISPLAY ADVERTISING RATES

(camera ready ads preferred)

	Members	Non-Members
1 8 page (9 items) .....	\$4.00	\$6.00
1 4 Page (20 items) .....	7.00	10.00
1 2 page (20 items) .....	12.00	18.00
3 4 page .....	17.00	25.00
Full page (50 items) .....	22.00	33.00

## DEALERS DIRECTORY

5 line maximum ..... \$12.00 for 12 months  
 Cambridge *Crystal Ball* assumes no responsibility for items advertised and will not be responsible for error in price, description or other information.

*Advertising copy, articles, club news and notices must be in our hands by the 10th of each month to assure publication in our next issue.* Advertisements containing reproductions will not knowingly be accepted unless clearly stated.

Opinions or information stated in any signed article or letter printed in the *Crystal Ball* are those of the authors and may or may not agree with National Cambridge Collectors, Inc. The Editor reserves the right to refuse and to edit any material submitted for publication so as to conform with the editorial style of the *Crystal Ball*.

## PLEASE ADDRESS ALL CORRESPONDENCE TO

National Cambridge Collectors, Inc.

P.O. Box 416 Cambridge, Ohio 43725

**PRESIDENT: Willard Kolb . . . . 614/695-0695**

**SECRETARY: Janice Hughes . . . . 614/432-7823**

**EDITOR: Phyllis Smith . . . . 513/323-3888**

NCC MUSEUM of Cambridge Glass is located on U.S. Route 40, 1/8 mile east of I-77 near Cambridge. Hours: 12 noon to 4 PM - Wednesday thru Sunday. (March thru November)

PLEASE NOTIFY US IMMEDIATELY OF ANY CHANGE IN YOUR ADDRESS

Please enclose a SASE when requesting information

THOUGHTS . . . . . continued from page 1

all of the "THANK YOU'S" and information for tax statements out to donors before Christmas when I was suddenly interrupted by one of the "little nagging problems" that come up. If you have not received a letter acknowledging your donation by the time you are reading this, please write and let me know. As usual I have waited until zero hour to do this and, through no fault but my own, I may have forgotten someone.

Now, for the "little nagging problem" that came up. Imperial Glass Corporation was bought out by Consolidated International and Lancaster Colony in a joint venture. Their intent was not to run the factory, but to liquidate it. This meant selling all of the assets, mainly the molds from Imperial, Heisey and Cambridge, along with anything in the factory including the pictures off the walls! At this time I am only going to give you the general situation as it exists. I hope to have more information for you next month.

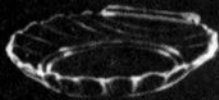
So far we have been able to acquire the book-end molds, along with the molds for the Swan punch bowl, base, and punch cup. There are other molds that we are interested in and will be at the factory to negotiate for, within a few days time. Unfortunately, the Cambridge molds (as I understand) were not going to be offered as a lump investment . . . i.e., they were going to be sold individually to those who would pay the highest prices. There are many interested parties. Thanks to Russel Vogelsong we were able to acquire the molds that are in our possession now. Some of the molds (I understand) mysteriously disappeared before the buy out. Some of the molds were bought and removed before we knew they were being sold. However, I think for the most part, these molds are in the hands of people who will use discretion in their use.

Fostoria Glass, as you may or may not know, is owned by Lancaster Colony. This would seem to give them an inside track on any of the molds. Also, Lancaster Colony owns other glass companies both here and abroad. Let it suffice for now to say that there is emerging a bidding war for any or all of the molds from the three companies. It has come down to a "knock-down, drag-out, cat-and-mouse" game

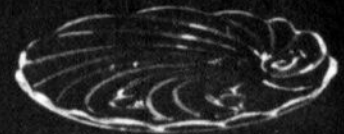
continued on page 6



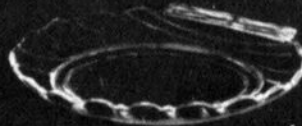
## SEA SHELL



1-5 in. B. & B. Plate



5-8 in. Salad Plate



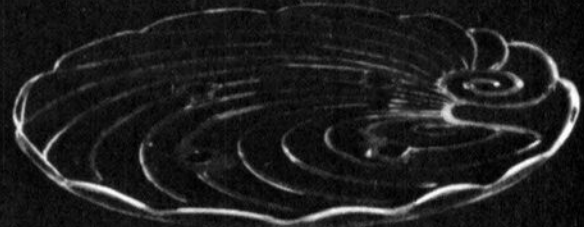
2-7 in. Salad Plate



11-7 in. Comport



10-5 in. Comport



6-14 in. Plate



12-8 in. Comport



14-9 in. Comport



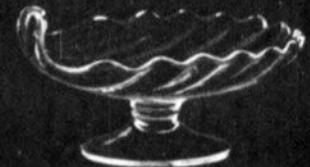
15-6 in. Comport



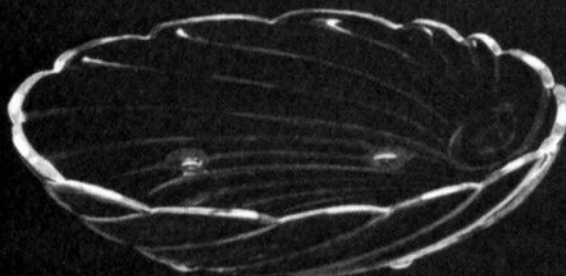
18-10 in. 3 Ftd Bowl



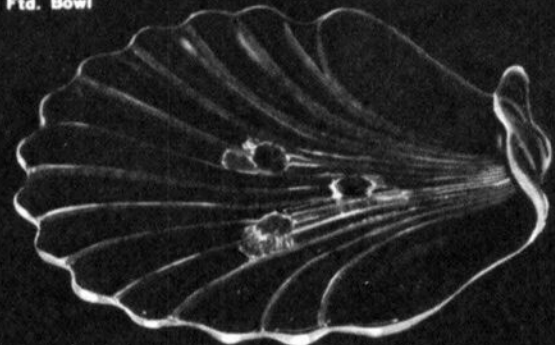
17-9 in. 3 Ftd. Bowl



16-7 in. Comport



19-11 in. Bowl



22-13 in. Oblong Plate, 3 Ftd.

June 1941



# CAMBRIDGE DECANTERS

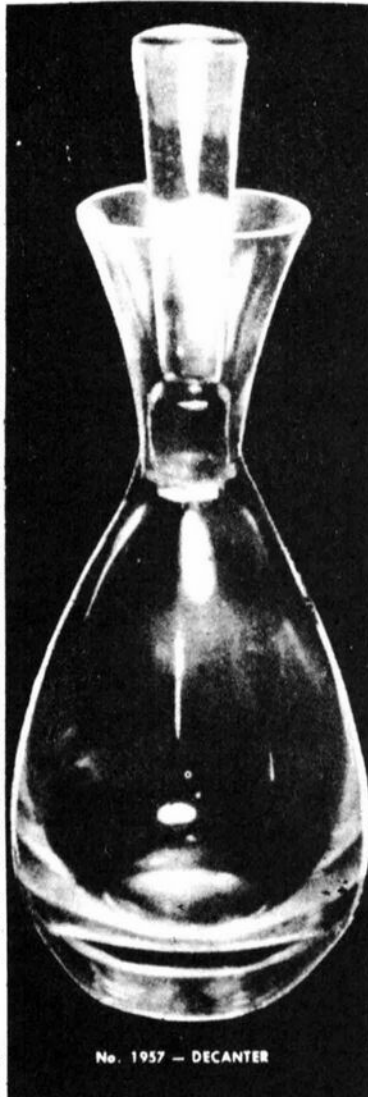
## Part I

by MARK NYE

A new series begins this month and will continue for several months since there are a large number of items to cover. During the course of this current set of articles we will be taking a look at many of the decanters Cambridge produced during its fifty plus years of production. In a slight change of format, we will begin with the late years and go backward in time.

The last catalog Cambridge issued and the one used during the final years of the reopen period is the one commonly called "the 1956-58 Catalog" even though it was not issued until very late 1956. In this catalog are illustrated ten decanters, five of which remained in the Cambridge line until the final closing. Of the decanters available during this period, only two were actually first introduced in the later years, these being the Sonata #1957/85 and the #1529. The other eight decanters go back as early 1931 and perhaps even before.

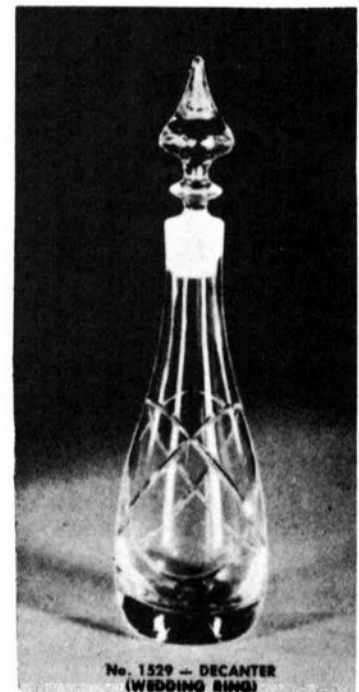
The Sonata line was introduced in late 1956 with ads for Sonata appearing in trade journals dated December 1956 and February 1957. In the 1956-58 catalog, the line was captioned "Sonata the oval line." While a few pieces of the Sonata line were made in



carmen, the decanter, as far as it is currently known, was produced only in crystal. Likewise with decorations, in that while a few pieces of Sonata were decorated, the decanter appears not to have been so treated. However, as with most any Cambridge line, there are always surprises and traps for the unwary who venture to say "never." The Sonata decanter remained in the Cambridge line until the final closing.

The other new decanter during this period was the #1529, one that apparently was a miscellaneous item and not part of a line. Exactly when the #1529 decanter was introduced has not been learned, but by March of 1956 it was being offered in crystal, moonlight blue, smoke, mandarin gold, pistachio and pink; plain, engraved Starlight and Wedding Rings; or etched Lace, Lion and Today. The October 1956 price list had the same listing for this decanter. However, by the time the last catalog was issued late in 1956, there was no mention of the etchings Lace, Lion and Today within its covers.

The next known price list, the 1958, offered this decanter in crystal; plain or engraved Starlite and Wedding Rings; but not in color. Interestingly, under the listings for Wedding Rings in the 1956 and 1958 price lists, the #1529 decanter is given an alternate description of cologne bottle. This would indicate it is a relatively small decanter, but capacity is not stated in any of the known price lists and catalogs.



From the Cambridge Square Line we have the #3797/85 32 oz. decanter. Made only in crystal, according to available documents, the Cambridge Square decanter was discontinued sometime during 1957. This decanter was sold in 7-piece cordial and 7-piece wine sets during the reopen period as well as during the original production period in the early 1950s.

# CAMBRIDGE SQUARE

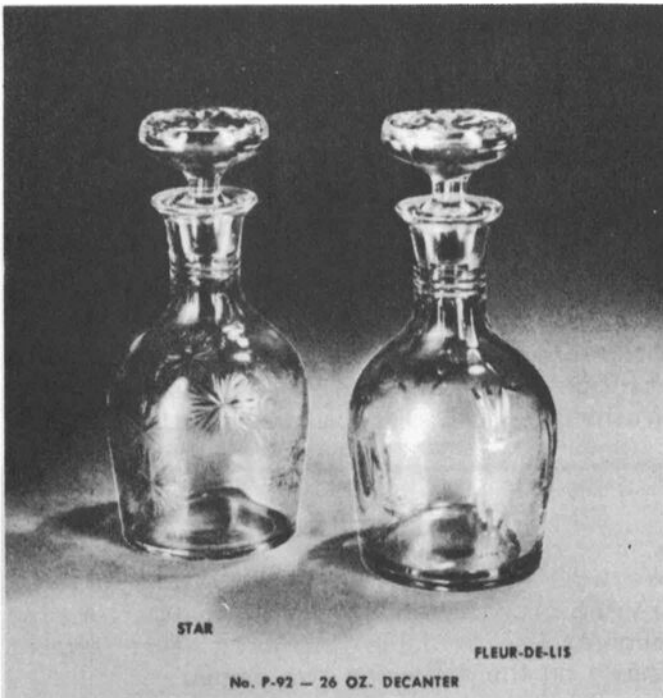
PATENT PENDING



3797/88  
32 oz. Decanter

The use of a decanter in a set was not limited to Cambridge Square as many of the decanters over the years were similarly sold with various tumblers and stemware. While none of the currently available price lists and other Cambridge records indicate the Cambridge Square decanter was decorated, it is possible some type of gold or platinum band decoration may have been applied to a limited number.

The Pristine or P92 26 oz. decanter is first found in the June 1949 catalog where it is shown engraved Landsdowne, Kimberly and Norwood. There was no listing for the plain decanter but undoubtedly it was sold undecorated. By 1953, the decanter had been incorporated into the Matched Barsemble line and



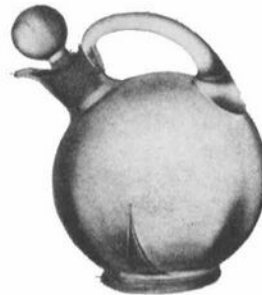
STAR

FLEUR-DE-LIS

No. P-92 - 26 OZ. DECANTER

as such was being engraved Lattice, Swirl, Star and Fleur-de-lis as well as being etched Vichy. The 1953 price list did list the decanter plain and described it as "26 oz. (polished-in stopper)." The Barsemble Line continued to be available thru 1956 but for the most part, including the P92 decanter, had been dropped from the Cambridge line by 1958. It is rather unlikely the Pristine #92 decanter was made in color, production being limited to crystal.

Two old friends were still around in late 1956 and 1957, the #3400/119 12 oz. Ball shape decanter and the #3400/92 32 oz. Ball shape decanter, but they too were gone by the time the 1958 price list was issued. During the re-open period both decanters were offered in crystal, amber and amethyst, all with crystal handles, in sets or as a single piece. During 1953 the 32 oz. size was being made in carmen and both sizes were being made in crystal, amber and amethyst; again, all colors had a crystal handle. During the late years, these two ball decanters were not available decorated.



3400/92. 32 oz.  
Ball Shape



3400/119. 12 oz.  
Ball Shape

The 1940 catalog had the #3400/92 and #119 decanters available in crystal, amber, forest green, royal blue, amethyst and carmen. The crystal decanters were being etched Blossom Time, Chantilly, Diane, Portia, Elaine and Rosepoint, as well as Portia, Diane and Rosepoint also being gold encrusted.

From the 1930s, one could reasonably expect to find these two decanters in any of the prevailing colors and decorated with any one of the then popular etchings, engravings or decorations. The frequency of such finds will be rather limited, but never the less, entirely possible. In addition, at least the #3400/92 decanter was used in the Varsity Sports line.

continued on next page

Another old friend seen in the 1956-58 catalog is the #1321 28 oz. footed decanter. In the Cambridge line since at least the very early 1930s, this decanter was made in crystal, amber and amethyst during the final years and during the years 1956-57, the crystal blank was available etched Wildflower, Rosepoint and Chantilly. During the early 1940s, the #1321 decanter was made in forest green and royal blue in addition to the colors already listed.

The first years of the 1940s say crystal #1321 decanters etched Blossom Time, Chantilly, Candlelight, Diane, Portia, Elaine and Rosepoint, as well as the last four etchings also available gold encrusted. The late 1940s and early 1950s saw the decanter made with the Adonis and Lexington cuttings.

During the 1930s, the #1321 decanter was listed holding both 28 and 32 oz. and at one point as a #1231 decanter. The latter was most likely a typographical error that was not detected and hence carried over into the catalog.

It was also during the 1930s that this decanter was decorated with various sport novelty designs as well as being included in the Varsity Sport line. The #1321 decanter was made in crown tuscan and then decorated with gold encrustations including Minerva.

One should not be surprised to find this decanter in any of the prevalent colors of the 1930s and decorated, engraved or etched with any of the more popular patterns of the time. In addition to the regular or conventional stopper, it was also sold with a jigger stopper and perhaps other styles as well.

. . . . . to be continued

*"The past, the present and the future are really one—they are today."* STOWE



1321  
28 oz. Ftd. Decanter

to acquire these molds. So long as I am President of this organization, and so long as the Directors agree, we will try to acquire as many molds as possible. However, we will also guard against NCC ever becoming the "mouse" in this game.

Next month I will try to give you a more comprehensive view of what is going on in our efforts to accommodate the membership. We don't want the molds or any other part of "The Cambridge Glass Story" to fall into the wrong hands.

WILLARD

*"The use of money is all the advantage there is in having money."*  
BENJAMIN FRANKLIN

## AUCTION REMINDER

February 22nd is the deadline for Mail Bids for the 1985 All-Cambridge Glass Auction! Bids must be received on or before that date, so be sure to mail them early to avoid disappointment. Take advantage of the opportunity to purchase good pieces of Cambridge Glass and support NCC and your MUSEUM at the same time.

PLEASE NOTE: the following item was inadvertently left off of the Auction List. Please add it to your list.

8 1/2" Draped Lady, Moonlight Blue.

For more information and bidding instructions, see the Auction Information page which was mailed to you with your January CRYSTAL BALL.

NCC QUARTERLY MEETING will be held on Friday evening, February 22nd, 8 PM, in the Auction Room at the Shenandoah Inn, Old Washington, OH. Please plan to attend!

### OUR SINCERE THANKS!

We wish to express our appreciation to MRS. JAMES R. ADDISON for the use of the Bennett Patent Juice Extractor advertisement shown on the following two pages.

# BENNETT'S PATENT Lemon Juice Extractor

Retains the Seed in the Glass Dish

The most Simple and Sanitary Extractor on the Market. Made of Clear Crystal Glass and Very Attractive, Yet Strong and Durable. The handle and spout are all new features, aside from the seed retainers.

## A Seller Wherever Shown

Covered by United States Patent No. 912443 dated January 6th, 1909. English and Canadian Patents applied for.

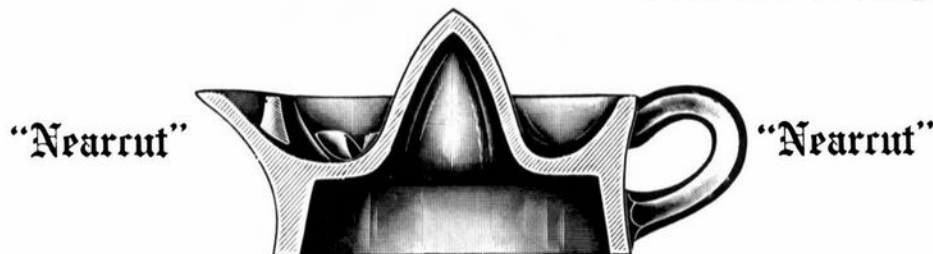
This is no cheap dirty looking article, but made of best "Nearcut" pot glass and attractive to the eye.



TOP VIEW

¶ We are the sole manufacturers and protect it against all infringements.

Ask for Samples



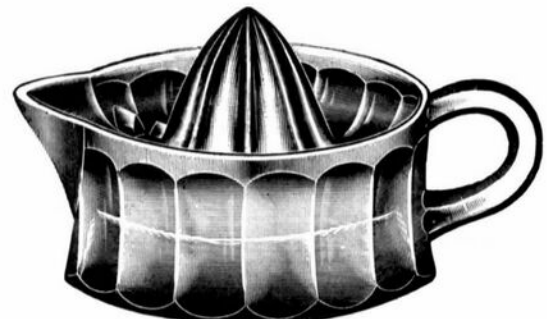
CROSS SECTION

### PRICE LIST <sup>1.80</sup>

Less than barrel lots.....	<del>\$8.40</del> per gross
Barrel lots.....	\$7.20 per gross
5 gross and over.....	\$6.60 per gross
Barrels each containing 10 oz., 50c charge	

All prices F. O. B. Cambridge

Net 60 Days, 2% Discount 30 Days.



SIDE VIEW

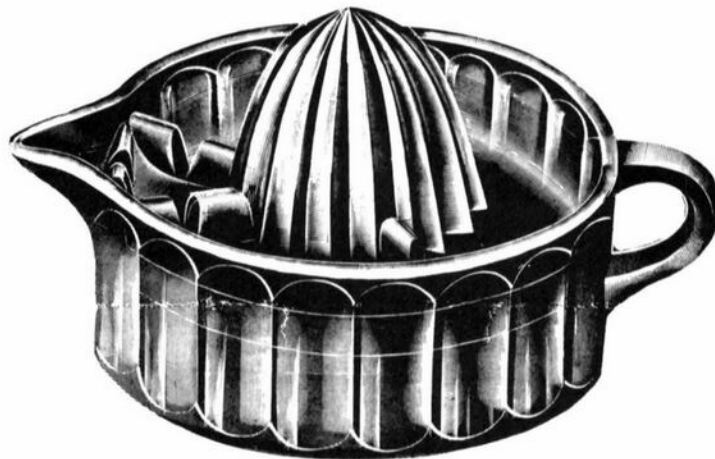
The Cambridge Glass Co. Cambridge, Ohio



2761 EXTRACTOR  
FOR  
ORANGES AND GRAPE FRUIT

---

Made on the exact principle of the Lemon Juicer on opposite  
page except in large size.



ASK FOR SAMPLES

**PRICE LIST**

5 gross and over	\$1.25 per doz.
Less quantities	1.50 per doz.

Barrel contains 4 1-2 doz.

Barrel charge 50c each

Prices F. O. B. Cambridge

---

**The Cambridge Glass Co.**  
**Cambridge, Ohio**



# "MOUNT VERNON"



34  
6 IN. COMPORT  
\$ 11.90 DOZ.



101  
8 IN. 2 COMPT. HDL. RELISH  
\$ 12.40 DOZ.



99  
9 1/2 IN. COMPORT  
\$ 21.00 DOZ.



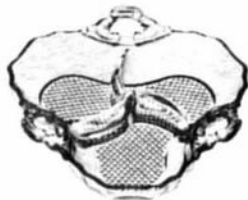
97  
6 1/2 IN. COMPORT  
\$ 9.20 DOZ.



77  
5 1/2 IN. 2 HDL. COMPORT  
\$ 13.00 DOZ.



96  
6 1/2 IN. COMPORT  
\$ 9.20 DOZ.



103  
8 IN. 3 COMPT. 3 HDL. RELISH  
\$ 12.40 DOZ.



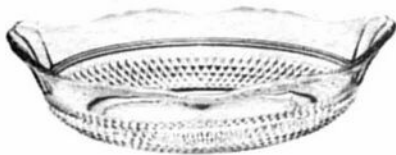
78  
6 IN. 1-HDL. PICKLE  
\$ 7.50 DOZ.



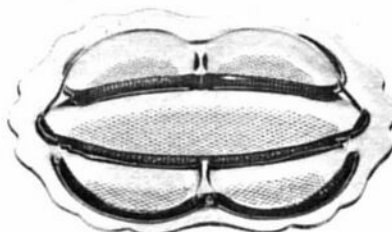
11  
7 1/2 IN. COMPORT  
\$ 9.20 DOZ.



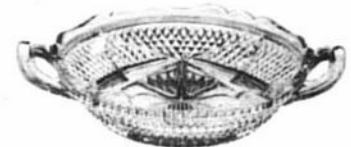
10  
7 IN. FOOTED BON BON  
\$ 9.20 DOZ.



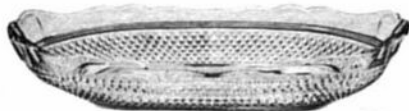
135  
11 IN. OVAL BOWL  
\$ 19.75 DOZ.



104  
12 IN. CELERY and RELISH  
\$ 23.75 DOZ.



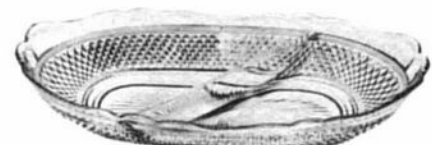
105  
8 1/2 IN. 4-COMPT. 2-HDL. SWEETMEAT  
\$ 14.50 DOZ.



79  
12 IN. CELERY  
\$ 11.90 DOZ.



100  
9 IN. 2-HDL. COMPORT  
\$ 27.50 DOZ.



80  
12 IN. 2-COMPT. RELISH  
\$ 12.50 DOZ.

THESE PRICES ARE FOR CRYSTAL AND REPRESENT HIGH RETAIL PRICES  
THIS LINE IS ALSO MADE IN CARMEN (RUBY) SEE SEPARATE PRICE LIST

# "MOUNT VERNON"



46  
10 IN. VASE  
\$ 13.15 DOZ.



54  
7 IN. VASE  
\$ 9.20 DOZ.



36  
8 IN. CANDLESTICK with BOBECHES AND  
#1 PRISMS \$ 47.50 DOZ.



1340  
2 1/2 OZ. COLOGNE, G.S.  
\$ 7.90 DOZ.



35  
8 IN. CANDLESTICK  
\$ 15.80 DOZ.



16  
3 IN. TOILET BOX & COVER  
\$ 3.30 DOZ.



29  
2 1/2 OZ. MUSTARD AND  
COVER - \$ 7.25 DOZ.



24  
SALT DIP  
\$ 1.70 DOZ.



30-44 S  
SAUCE BOAT & LADLE  
\$ 9.20 DOZ.



74  
7 OZ. HONEY JAR & COVER  
\$ 7.90 DOZ.

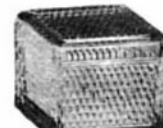


28  
SALT & PEPPER SHAKER W/GLASS  
TOP - \$ 8.40 DOZEN PAIRS

38  
13 1/2 IN. CANDELABRUM  
with BOBECHES & #1 PRISMS  
\$ 87.00 DOZ.



102  
2-HDL. OVAL OPEN SALT  
\$ 2.65 DOZ.



17  
SQ. TOILET BOX & COVER  
1 1/4 X 3 1/2 IN. \$ 10.50 DOZ.



50  
6 IN. VASE  
\$ 9.90 DOZ.



15  
4 1/2 IN. FTD. TOILET BOX & COVER  
\$ 7.90 DOZ.



12  
4 1/2" IVY BALL or ROSE BOWL  
\$ 9.20 DOZ.



130  
4 IN. CANDLESTICK  
\$ 5.00 DOZ.



18  
7 OZ. SQ. TOILET BOTTLE - G.S.  
\$ 15.80 DOZ.

THESE PRICES ARE FOR CRYSTAL AND REPRESENT HIGH RETAIL PRICES  
THIS LINE IS ALSO MADE IN CARMEN (RUBY) SEE SEPARATE PRICE LIST

# "MOUNT VERNON"



10 OZ. GOBLET  
\$ 4.75 DOZ.



25  
4 1/2 OZ. CLARET  
\$ 4.10 DOZ.



41  
4 OZ. OYSTER COCKTAIL  
\$ 4.10 DOZ.



52  
40 OZ. DECANTER G.S.  
\$ 24.75 DOZ.



22  
3 OZ. FOOTED TUMBLER  
\$ 3.55 DOZ.



3  
10 OZ. FOOTED TUMBLER  
\$ 4.75 DOZ.



20  
12 OZ. FOOTED TUMBLER  
\$ 5.55 DOZ.



91  
86 OZ. JUG  
\$ 23.75 DOZ.



7  
CUP & SAUCER  
\$ 7.25 DOZ.



23  
FINGER BOWL \$ 5.00 DOZ.  
FINGER BOWL PLATE \$ 4.20 DOZ.



13  
12 OZ. TUMBLER  
\$ 4.20 DOZ.



13  
66 OZ. JUG  
\$ 19.75 DOZ.



27  
3 OZ. WINE  
\$ 4.10 DOZ.



2  
6 1/2 OZ. TALL SHERBET  
\$ 4.75 DOZ.



59  
14 OZ. TUMBLER  
\$ 4.75 DOZ.



57  
7 OZ. OF. COCKTAIL  
\$ 3.70 DOZ.



58  
10 OZ. TUMBLER  
\$ 3.95 DOZ.



26  
3 1/2 OZ. COCKTAIL  
\$ 4.10 DOZ.



42  
4 1/2 OZ. LOW SHERBET  
\$ 4.10 DOZ.



84  
14 OZ. HANDLED STEIN  
\$ 7.90 DOZ.



21  
5 OZ. FOOTED TUMBLER  
\$ 4.10 DOZ.



8  
SUGAR AND CREAM  
\$ 9.90 DOZEN PAIRS



55  
2 OZ. WHISKEY  
\$ 2.65 DOZ.



53  
2 OZ. WHISKEY  
\$ 2.65 DOZ.



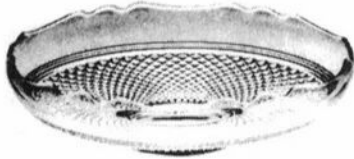
56  
5 OZ. TUMBLER  
\$ 2.90 DOZ.

THESE PRICES ARE FOR CRYSTAL AND REPRESENT HIGH RETAIL PRICES  
THIS LINE IS ALSO MADE IN CARMEN (RUBY) SEE SEPARATE PRICE LIST



Our Label On Each Piece

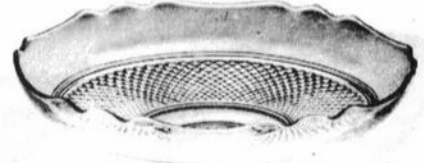
# "MOUNT VERNON"



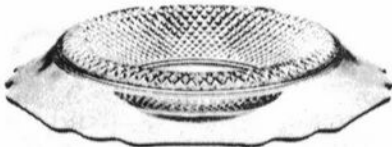
61  
11½ IN. BOWL, SHALLOW CUPPED  
\$ 19.75 DOZ.



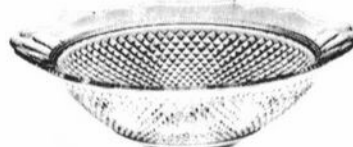
32  
6 IN. CEREAL  
\$ 5.00 DOZ.



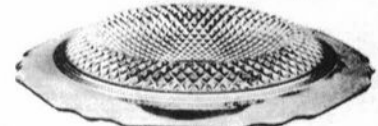
126  
11½ IN. BOWL, SHALLOW  
\$ 15.00 DOZ.



45  
12½ IN. BOWL, F.R.E.  
\$ 19.75 DOZ.



39  
10 IN. 2-HDL. BOWL  
\$ 15.00 DOZ.



129  
12 IN. BOWL, F.R.E.  
\$ 15.00 DOZ.



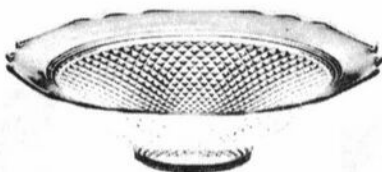
6  
5¼ IN. FRUIT SAUCER  
\$ 4.10 DOZ.



76  
6 IN. PRESERVE OR JELLY  
\$ 5.00 DOZ.



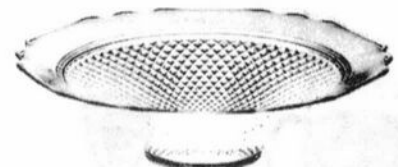
31  
4½ IN. FRUIT SAUCER  
\$ 3.80 DOZ.



44  
12½ IN. BOWL, FLARED  
\$ 19.75 DOZ.



43  
10½ IN. BOWL, DEEP  
\$ 19.75 DOZ.



128  
11½ IN. BOWL, BELLED  
\$ 15.00 DOZ.

THESE PRICES ARE FOR CRYSTAL AND REPRESENT HIGH RETAIL PRICES  
THIS LINE IS ALSO MADE IN CARMEN (RUBY) SEE SEPARATE PRICE LIST



Our Label On Each Piece



# CAMBRIDGE GLASS BOOKS FOR SALE

by National Cambridge Collectors, Inc.

- \* **COLORS IN CAMBRIDGE GLASS**  
(128 pages - 60 color plates - fully indexed)  
Hardbound with 1984 Price Guide \$19.95
- \* **1930-34 CAMBRIDGE GLASS CO. CATALOG REPRINT**  
(250 page reprint of original catalog)  
Hardbound with 1982 Price Guide \$14.95
- \* **1949-53 CAMBRIDGE GLASS CO. CATALOG REPRINT**  
(300 page reprint of original catalog)  
Hardbound with 1983 Price Guide \$14.95
- \* **1956-58 CAMBRIDGE GLASS CO. CATALOG REPRINT**  
(164 page reprint of original catalog)  
Paperback \$6.95

**1982 PRICE GUIDE**  
for 1930-34 catalog reprint Postpaid \$2.25

**1983 PRICE GUIDE**  
for 1949-53 catalog reprint Postpaid \$2.25

\* NCC MEMBERS ONLY: These publications are available at 10% discount - or all four (4) at one time for \$50.00.

by Mary, Lyle and Lynn Welker

**CAMBRIDGE GLASS CO.**  
(120 pages of reprint from 8 old catalogs)  
Paperback \$6.95

**CAMBRIDGE GLASS CO. BOOK II**  
(119 pages of reprint from old catalogs)  
Paperback \$6.95

**CAMBRIDGE, OHIO GLASS IN COLOR II**  
(15 color pages with descriptions and notes)  
Spiralbound \$5.95

by Harold and Judy Bennett

**1903 CAMBRIDGE GLASS CO. CATALOG REPRINT**  
(106 page reprint of an original catalog)  
Paperback \$7.50

Address your orders to:

**BOOKS**  
National Cambridge Collectors, Inc.  
P.O. Box 416  
Cambridge, OH 43725

Please add \$1.00 (P & I) per order.  
(Not required for Price Guide)  
Ohio residents please add 6% state sales tax.

**DEALER DISCOUNTS AVAILABLE - PLEASE WRITE!**

## PANORAMA OF COLOR

presented by

SPARKLING CLEARWATER  
DEPRESSION GLASS CLUB, INC.

### SIXTH ANNUAL SHOW & SALE

Featuring

Depression Glass • China • Pottery

All American Made Depression Era Glassware  
INCLUDING: Cambridge, Helsey, Duncan Miller, Fostoria, Imperial,  
Tiffin, Fenton, Paden City, Fiesta, Russel Wright, Roseville, etc.

Guest

BILL & PHYLLIS SMITH  
Cambridge Glass  
Specialists

Guest

NORA KOCH  
EDITOR, "Depression  
Glass Daze"

Special  
Displays



Snack  
Bar

Saturday  
MARCH 9, 1985  
10:00 AM - 6:00 PM

Sunday  
MARCH 10, 1985  
11:00 AM - 5:00 PM

CLEARWATER CITY HALL ANNEX  
CLEVELAND STREET (Rt. 60) & MISSOURI AVE.  
CLEARWATER, FLORIDA

DOOR PRIZES

Donation \$2.00  
Good Both Days

Inquiries Barbara Flowers  
(813) 706-5406

## 17th Annual Antique Show & Sale

**Arts & Crafts Building — Ohio State Fairgrounds**  
Exit 17th Avenue I-71 • Columbus, Ohio

Saturday, February 16, 1985 • 11 a.m. to 9 p.m.  
Sunday, February 17, 1985 • 12 Noon to 6 p.m.

Sponsored By

**Xi Eta Lambda Chapter of Beta Sigma Phi**  
of Reynoldsburg, Ohio

Show Chairman  
Patsy Youtz  
1519 Lexdale Drive  
Reynoldsburg, Ohio 43068

Show Manager  
George Hoffman  
129 S. Fourth Street  
Newark, Ohio 43055  
614-345-8021

Benefit:

Reynoldsburg Police Dept. and "Fireman Bob" Fire Safety Program

Donation: \$ 1.50

# Study Club News

STUDY GROUP #7 - EASTERN OHIO  
"THE CAMBRIDGE BUFFS"  
Phone: 614/432-5230

The Cambridge Buffs Study Group held their Christmas meeting and Buffet Dinner in the home of Mr. & Mrs. Dean Westfall, with fifteen members present. NCC President Willard Kolb and his wife Norma were our guests.

We had a gift exchange, and played a game presented by Pauline Westfall which entailed naming different patterns of Cambridge glass. Charles Upton was the winner. We also had fun with a "Mini-Auction" led by auctioneer Dale Snode. "Show & Tell" items included a paperweight, two water pitchers, a #3136 goblet and a vase with Lily of the Valley etching.

submitted by Deanne Gray

## — Classified —

**BUYING:** CAPRICE Moonlight or Rosepoint by Cambridge; Rose or Orchid by Heisey; and American, June, Fairfax, Versailles, Trojan, etc., by Fostoria. Nadine Pankow, 207 South Oakwood, Willow Springs, IL 60480. 312/839-5231

**FOR SALE:** MANDARIN GOLD 8 1/2" Draped Lady. Sealed Bids Only 10 days after publication. Minumum Bid \$150.00. Blossomtime #3900 cups and saucers (13) \$12.50 per set. Caprice: crystal tilt ball jug \$80; 9 1/2" dinner plates (20) \$30. Cascade goblets (2) \$16. Chantilly #3625 wines (9) \$42.50. Mt. Vernon: 40 oz. decanter and stopper \$75; wines (6) \$12.50. Rosepoint: 10 oz. 4 3/4" flat tumblers (10) \$35; #3500/67 6-piece relish set \$235; #1617 Hurricane Lamp \$200; P747 and P728 cigarette box and ashtrays, set \$380; #3121 clarets (3) \$70. Shipping Extra. SASE Required. More Cambridge, Heisey and Fostoria. Write specific wants. I search. **Crystal Matching Service**, 1155 Willow St., #24, Faribault, MN 55021. 507/789-5837

STUDY GROUP #10 - LONG ISLAND, NY  
"THE TUSCAN CROWNS"  
Phone: Charles or Loretta at 516/589-9168

Our Christmas meeting was held on December 17th at the Bonwit Inn where we all enjoyed a delightful meal as well as each others company. Dessert and coffee were served at the home of Joyce and Al Colangelo. Joyce makes the greatest desserts. There, we had our grab bag. As an added treat, all members were given a little gift from Santa - Cambridge cup plates - amethyst for the women and cobalt blue for the men. We were all excited and surprised.

Our First All-Glass Show sponsored by our Study Group is now past history and we considered it a success. We were able to raise \$500 for the NCC MUSEUM. Not bad for a first try.

May the New Year bring Peace and Happiness to All.

submitted by Rita Berg

## STAGE COACH ANTIQUE MALL

(formerly White Pillars Antiques)

7525 East Pike  
Norwich, OH 43767  
614/872-3720

MANY DEALERS. . .

PLENTY OF PARKING. . .

WIDE SELECTION OF GLASS  
AND POTTERY  
FURNITURE AND  
GENERAL LINE!

**BUY and SELL**

**OPEN YEAR ROUND**  
Weekdays - 10 AM - 5:30 PM  
Sunday - 12 noon - 5:30 PM  
Summer Evening Hours - by Chance!

Located 9 miles E. of Zanesville, OH, on I-70 to Norwich Exit No. 164 - then 1/2 mile W. on Route 40.

**WANTED:** PORTIA etched, #3126, 2 1/2 oz. wine (amber colored bowl with clear stem). Novice collector. Please call with anything close. Jennifer Woods, 353 N.W. 74th, Seattle, WA 98117. 206/789-7269

# SKYLINE DRIVE ANTIQUES

Drew & Donna Davis  
5432 Skyline Drive, Cambridge, OH 43725  
614 / 432-2621

## ROSEPOINT

#3121 Wines (4) ea. .... \$ 45.00  
#3121 Cocktails (6) ea. .... 28.00  
#3400 Bread & Butter Plates (6) ea. ..10.00  
#968 Cocktail Icers w/liners (4) ea. ...65.00  
#170 Martha Salver (rare).....225.00  
Cheese Dome w/underplate  
(ext. rare) .....525.00  
#1380 Sq. Decanter w/stopper,  
(small bruise) .....225.00  
P254 Cream & Sugar, set .....60.00  
#3400/48, 13" 4 ftd. crimped  
Bowl .....60.00  
#3400/90, 6" 2 hdd., 2-part  
Relish .....30.00  
#3400 Salt & Pepper, set .....35.00

## CAPRICE - CRYSTAL

#300 4 1/2 oz. Oyster Cocktails  
(4) ea. ....18.00  
#300 6 oz. tall Sherbets (6) ea. ....10.00  
#300 2 1/2 oz. Wines (6) ea.....22.00  
#300 1 oz. Cordials (3) ea. ....25.00  
#94 2 1/2" 2-compt. Ind. Nut & Mint .20.00  
#93 2 1/2" Ind. Nut (3) ea. ....15.00  
#100 5 oz. Oil D/S (bruise  
on stopper) .....50.00  
#2 pressed tall Sherbets (6) ea. ....10.00

## CAPRICE - MOONLIGHT BLUE, ALPINE

#13 3 1/2" Coasters (2) ea. ....25.00  
#124 8 1/2" 3-part Relish.....30.00  
#120 6 3/4" 2-part Relish.....25.00

## BLUE CLEO

#851 Ice Pail w/handle .....110.00  
#877 11" Comport .....60.00  
8 1/2" Salad Plates (2) ea.....15.00

## CAPRICE - MOONLIGHT BLUE

#13 3 1/2" Coasters (3) ea. ....17.00  
#38 Cream & Sugar, set .....30.00  
#102 9" Pickle .....35.00  
#167 6" Candy box & cover .....75.00  
#103 12" Celery .....100.00  
#92 Ind. Salt & Pepper (rare) set ....110.00  
#342 6" Vase, ruffled top .....110.00  
#342 6" Vase, ground top .....95.00  
#345 5 1/2" Vase, ground top .....95.00

## MISCELLANEOUS

#523 Crystal single bun Geisha on  
wooden display base.....325.00  
#1137 Crystal Blue Jay  
Flower Holder .....95.00  
#512 Mocha 8 1/2" Rose Lady .....185.00  
#1070 Ebony Pinch Decanter w/ster-  
ling overlay "Thistle" pattern.....125.00  
#1020 Ebony Cocktail Shaker, 2-lip  
top, silver encrusted "Gloria" .....225.00  
#1301 Crown Tuscan black enamel  
Vase, Acid signed .....85.00  
#1402/37 2 1/2 oz. hdd. crystal  
Tally-Ho Tumbler, E/Hunt Scene....40.00  
#1125 Mystic Blue 16" Buffalo Bowl  
(rare) NCC Color Book, Plate 24,  
Row 3 .....175.00  
#463 Dolphin hdd. Bowl as shown  
in NCC Color Book, Plate 22,  
Row 1 (rare).....150.00  
3" Gold Krystal Ashtray, etched  
Apple Blossom in gold metal  
holder .....65.00  
Amber Cambridge Glass Display Prism,  
NCC Color Book, Plate 59,  
Row 6.....75.00  
64 oz. blown Milk Glass Pitcher w/4  
blown glasses, all in Gold  
Farberware (rare) set.....135.00

ALL ITEMS MINT UNLESS OTHERWISE NOTED.

SHIPPING & INSURANCE EXTRA! LAY-AWAYS ACCEPTED WITH 1/3 DOWN!

# EVEYLN M. ALLEN

135 Cynthia Street, Heath, OH 43056  
614 / 522-1635

## ROSE POINT - ETCHING

#103, 2-piece Guest Set.....	\$ 350.00
#3500/41, 10" covered Urn.....	350.00
#3900/114, 32 oz. Martini Mixer .....	275.00
#506, 5 1/2" Butter Tub and cover .....	225.00
#3900/117, 20 oz. Jug.....	200.00
#657, 6" 2-lite Rams Head Candleholders, pair.....	200.00
#1321, 28 oz. ftd. Decanter .....	200.00
#3900/115, 76 oz. Jug.....	185.00
#3500/139, Honey Dish and cover .....	165.00
#306, Candy Box and cover.....	150.00
#3500/97, 14", 4-compt. Relish.....	140.00
#3400/161, 6 oz. ftd. Oil .....	125.00
#616, Cigarette Box and cover.....	125.00
#3900/24, 10 1/2" Dinner Plates(2) each.....	90.00
#3500/14, Sugar and Cream, set.....	55.00
#3400/168, 10 1/2" Bowl.....	55.00
#7966, 2 oz. Sherry (5) each.....	55.00
#435, 7 1/2" 2 hdd. Pristine Bowl .....	55.00
#3121, 5 oz. Cafe Parfait (5) each.....	60.00
#3500/127, 4 1/4" nested Ashtray .....	50.00
#3500/15, Individual Cream and Sugar, set .....	48.00
#3500/108, 2 1/2" Candlesticks, pair.....	42.00
#3400/115, 13 oz. Barrel Tumblers (6) each.....	40.00
#3500, Cups and Saucers (4 sets) each set.....	35.00
#1402/86, 6" 2 hdd. Tally-Ho Nappy .....	35.00
#477, 9 1/2" Pickle (4) each .....	35.00
#3400/68, Cream Pitcher.....	28.00
#940, Individual Sugar .....	28.00

## P O R T I A - ETCHING

#3400/1240, 12" oval Refectory Bowl .....	\$ 55.00
#3900/41, Cream and Sugar, set.....	38.00
#3400/28, 7" low Comport .....	38.00
#3121, 2 1/2 oz. Wines (4) each.....	32.00
#3121, 3 oz. Cocktails (6) each.....	25.00
#3126, 13 oz., ftd. Tumblers (8) each.....	22.00
#3126, 7 oz., low Sherbets (6) each.....	18.00
#3400/62, 8 1/2" Plates (8) each.....	14.00

## W I L D F L O W E R - ETCHING

#3400/175, Cocktail Shaker with chrome lid .....	\$ 135.00
#3900/24, 10 1/2" Dinner Plates (12) each.....	75.00
#3400/28, 7" Comport, Gold Krystal top.....	60.00
#968, 2-piece Cocktail Icer (4) each .....	55.00
#3900/17, Cup and Saucer .....	35.00

## D I A N E - ETCHING

#3400, 80 oz. Ball Jug.....	\$ 140.00
#394, 10", 5-compt. Celery.....	45.00



# EVEYLN M. ALLEN

135 Cynthia Street, Heath, OH 43056  
614 / 522-1635

## CHANTILLY - ETCHING

#312, 5 1/2" Candy Box and cover.....\$ 85.00  
#3900/17, Cups and Saucers (7 sets) each set.....35.00  
#3625, 10 oz., ftd. Goblets (10) each .....25.00  
#3625, 7 oz. tall Sherbet.....20.00  
#78, 2-lite Candelabra w/prisms, pair.....200.00

## E L A I N E - ETCHING

#3500/14, Cream and Sugar, set .....\$ 40.00  
#3900/17, Cups and Saucers (4 sets) each set.....35.00  
#3500/1, 10 oz., ftd. Goblets (7) each.....25.00

## C A P R I C E

#1356, 7", 2-lite Candelabra, w/bobeche, pair.....\$ 140.00  
#17, Cups and Saucers (12 sets) each set .....14.00  
#165, Blue Alpine Candy Box and cover.....95.00  
#1, pressed 10 oz. Blue Goblets (2) each.....50.00  
#2, pressed 7 oz. Blue tall Sherbets (7) each.....40.00

## A D O N I S - ROCK CRYSTAL ENGRAVING

#3500, 7 oz., low Sherbets (7) each .....\$ 18.00  
#3500/5, 8 1/2" Plates (12) each.....18.00  
#3500/5, 6 1/2" Plates (12) each.....14.00

## M I S C E L L A N E O U S

Brown (over Ivory) Monkey Lamp.....\$ 850.00  
#1222, 8" Royal Blue Turkey.....675.00  
#1222, 8" Amber Turkey .....450.00  
#1316, 7" lt. Emerald Green Rabbit (no harm bruise).....350.00  
#3011, 9" Crown Tuscan Nude Candlesticks, pair .....240.00  
#3011, 7" Carmen cupped Nude Comport.....150.00  
#111, 12" Crystal Heron Flower Figure.....140.00  
#3011, Carmen top Nude Wines (4) each .....120.00  
#513, 13" lt. Emerald Green Flower Figure (Draped Lady).....220.00  
#513, 13" Mocha Flower Figure (Draped Lady).....365.00  
#1115, 11" Crystal Flower Figure (Bashful Charlotte) .....170.00  
#1115, 11" Pink Flower Figure (Bashful Charlotte).....250.00  
#1115, 11" Mocha Flower Figure (Bashful Charlotte).....450.00  
#518, 8 1/2" Amber Flower Figure (Draped Lady).....160.00  
#509, Crystal Flower Figure (Two-Kids) .....175.00  
#509, Pink Flower Figure (Two-Kids).....200.00  
#509, Mocha Flower Figure (Two-Kids).....395.00  
#1337, Crown Tuscan Cigarette Holder, Black foot.....110.00  
#119, 7" Rubina handled Basket .....450.00  
#647, 6", 2-lite, Windsor Blue Candlesticks, pair.....300.00  
#1066, 7" dark Green Ivy Ball.....35.00

POSTAGE and INSURANCE EXTRA!  
ALL ITEMS MINT UNLESS NOTED OTHERWISE!

# COLUMBUS ANTIQUE FLEA MARKET (ANTIQUES & COLLECTIBLES)

Ohio State Fairgrounds - Lausche Building  
Off I-71 Exit 17th Avenue - Columbus, Ohio

## FEBRUARY 24th

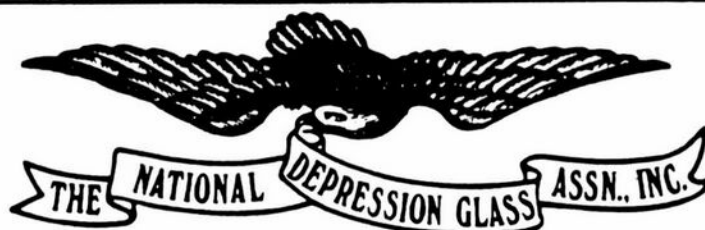
Sunday Only - 7 A.M. to 4 P.M.  
Show Admission \$1.00 - Under 12 Free  
150 QUALITY DEALERS

SELLING Advertising Art Deco, books, Cambridge, clocks, coins, collec-  
tibles, Depression glass, dolls, Fiesta, fine early furniture, Heisey, jewelry,  
lamps, oak furniture, post cards, pottery, good primitives, tools and print  
shop items

### STOCKWELL PROMOTIONS

4214 North High Street  
Columbus, Ohio 43214  
(614) 267-8163/263-6830/885-2352

NEXT SHOWS: April 21, May 12, June 23, September 8,  
October 13, November 10, and December 1



THE PURPOSE OF THE ASSOCIATION IS TO UNITE PEOPLE IN GOOD  
FELLOWSHIP THROUGH SPONSORED ACTIVITIES AND FORM A CENTRAL  
ORGANIZATION OF MEMBERS WHO ARE INTERESTED IN PROMOTING  
DEPRESSION GLASS THROUGH AN EXCHANGE OF IDEAS AND INFORMATION.

BENEFITS OF MEMBERSHIP INCLUDE RECEIPT OF THE NEWSLETTER "NEWS  
& VIEWS," VOTING PRIVILEGES, AND NOTICE OF SPECIAL EVENTS SUCH AS  
THE ANNUAL CONVENTION, SHOW, AND SALE.

#### APPLICATION FOR MEMBERSHIP

MEMBERSHIP DUES PER YEAR: SINGLE \$8.00 \_\_\_\_\_ FAMILY \$10.00 \_\_\_\_\_

\_\_\_ MR. \_\_\_ MRS. \_\_\_ MISS \_\_\_ MS. \_\_\_\_\_

ADDRESS \_\_\_\_\_

CITY \_\_\_\_\_ STATE \_\_\_\_\_ ZIP \_\_\_\_\_

Make check payable to NDGA, INC., and mail to:  
PEGGY SCOTT, TREASURER  
P.O. BOX 11123 (NCC)  
SPRINGFIELD, MO 65808

# DEALERS



# DIRECTORY

NOTE: When writing to the Dealers listed here, please enclose a SASE!

<p><b>EVELYN M. ALLEN</b> 135 Cynthia Street Heath, Ohio 43055 Mail Order &amp; Shows 614-522-1635 <b>SPECIALIZING IN CAMBRIDGE GLASS!</b></p>	<p><b>BENICIA ANTIQUE SHOP</b> 305 First Street Benicia, California 94510  <b>OPEN 11 AM - 5 PM</b> Closed Monday Z. E. LOPES 707-745-0978</p>	<p><b>CHARLES MIKULIK</b> Box 416 Elizabeth, N.J. 07207  <b>— COLLECTOR —</b> Always paying good prices for <b>CAMBRIDGE CAPRICE</b> in all colors 201-688-1144  <b>CARRY MOST TYPES OF ANTIQUES</b></p>
<p><b>ANDREJCAK'S ANTIQUES</b> 14533 Bayes Ave. Lakewood, Ohio 44107 Joe &amp; Karen Andrejcek 216-226-3417 <b>SHOWS ONLY — CAMBRIDGE — FENTON — CHINA</b></p>	<p><b>VISIT HISTORIC BENICIA</b> and its 28 shops Off Interstate #80 ..... ..... North of San Francisco</p>	<p><b>BERKELEY ANTIQUES</b> 69 Berkeley St. Boston, MA 02116 George or Frank 617-426-1048 <b>CAMBRIDGE, HEISEY, GENERAL LINE</b></p>
<p><b>ABRAHANTE'S Matching Service</b> Discontinued China, Crystal &amp; Flatware Patterns 7288 S.W. 40th Street Miami, FL 33155 PHONE: 305 / 262-7336 <b>BUY &amp; SELL</b></p>	<p><b>RICHARD BENNETT</b> 64183 Warne Drive, Cambridge, OH 43725 Phone: 614 / 432-4483 <b>SPECIALIZING IN CAMBRIDGE GLASS</b></p>	<p><b>THE FLOWER FROG</b> 106 E. Cairo Dr., Tempe, AZ 85282 <b>MAIL ORDER and SHOWS</b> Pat Binkley, 602/967-1373 <b>CAMBRIDGE HEISEY FOSTORIA</b></p>
<p><b>BLUE BONNET SHOPPE</b> at The Main Place 102 West Mistletoe at Main San Antonio, TX 78212.....512/736-4900 <b>Antiques, Crystal, Collectibles! Open 7 days!</b></p>	<p><b>D &amp; D ANTIQUES</b> Columbus, Ohio <b>DICK SLIFKO SHOWS ONLY</b></p>	<p><b>GLASS RAINBOW of California</b> P.O. Box 127, Elk Grove, CA 95624 Neil &amp; Ervina McCartney Hours: 9am-4pm &amp; 7-9pm 916/685-5485 <b>BY APPOINTMENTS &amp; SHOWS!</b></p>
<p><b>THE GLASS CUPBOARD</b> 39 Shire Oaks Drive Pittsford, New York 14534 Marcia Ellis 716-586-7596 <b>CAMBRIDGE ONLY INQUIRIES INVITED</b></p>	<p><b>THE GLASS MENAGERIE</b> Unit 4, Plaza 20, Route 50 North Easton, MD 21601 Barbara &amp; Bill Danels 301/822-8794 <b>SPECIALIZING IN GLASSWARE OF THE DEPRESSION ERA</b></p>	<p><b>HENDERSON'S ANTIQUES</b> 303 Guilford Ave., Woodsfield, OH 43793 Mary &amp; Wilbur 614/472-1133 <b>SPECIALIZING IN CAMBRIDGE GLASS</b> Shows, Mail &amp; Stagecoach Antique Mall</p>
<p><b>PEG AND DALE GOTSCHALL</b> 833 N. 6th Street, Cambridge, OH 43725 <b>ANTIQUES and COLLECTABLES</b> including quality crystal and colored glass Hours by Chance or Appointment 614/432-5529</p>	<p><b>GREEN ACRES FARM</b> 2678 Hazelton Etna Rd., Pataskala, OH 43062 (State Route 310 North) Sat. &amp; Sun. 1-7 PM 614/927-1882 <b>Antiques, Crystal Glass and Collectibles</b></p>	<p><b>1886 HOUSE</b> East Schodack, N.Y. 12063 <b>MAIL and SHOWS</b> Laurie Cruise 518-477-5895 <b>CAMBRIDGE - NORITAKE - AZALEA - D.G.</b></p>
<p><b>THE HITCHING POST</b> 7467 S. R. 88 Ravenna, OH 44266 Ph. 216-296-3686 D. McDaniel <b>CAMBRIDGE — HEISEY — GENERAL LINE</b></p>	<p><b>GEORGE HOFFMAN ANTIQUES</b> 129 South 4th Street Newark, Ohio 43055 614-345-8021</p>	<p><b>MARGARET LANE ANTIQUES</b> 2 E. Main St., New Concord, OH 43762 Lynn Welker 614/826-4418 <b>CAMBRIDGE GLASS MATCHING SERVICE</b> Hours Mon.-Fri. 1-5 PM or by Appointment</p>
<p><i>YOU CAN ADVERTISE YOUR ANTIQUE SHOP HERE!</i>  <b>1 inch — \$12 for 12 months</b></p>	<p><b>SHIRLEY S. LAHOUSEUR</b> Antiques and Collectibles Specializing in Cambridge Glass <b>BY APPOINTMENT</b> 7597 Daphne Drive 315-458-5297 No. Syracuse, NY 13212</p>	<p><b>AL STEELE</b> Westerville, Ohio 614-882-6483 or 614-882-7124 Mail Orders and Shows Only <b>HEISEY — CAMBRIDGE — PATTERN GLASS</b></p>
<p><b>THE COUNTRY PEDDLER ANTIQUES</b> 111 W. Main St., New Concord, OH 43762 JACK &amp; SHARON BOGART PHONE 614/826-7439 <b>BUY SELL APPRAISE REFINISH</b> General Line-Cambridge Glass</p>	<p><i>YOU CAN ADVERTISE YOUR ANTIQUE SHOP HERE!</i>  <b>1 inch — \$12 for 12 months</b></p>	<p><i>YOU CAN ADVERTISE YOUR ANTIQUE SHOP HERE!</i>  <b>1 inch — \$12 for 12 months</b></p>

THINGS ARE  
HAPPENING!



WE NEED YOUR  
PLEDGE MONEY NOW!

The molds for this beautiful Swan Punch bowl, base, and punch cup, plus several other molds now belong to NCC. For additional information, on the important part you have in all this, please read President Kolb's article beginning on page 1 of this issue.

## MARK YOUR CALENDAR

### **NCC QUARTERLY MEETING**

Friday, February 22nd - 8 PM

Informative Meeting - Show & Tell - Auction Preview  
Bring a friend and your Show & Tell glass

### **ALL CAMBRIDGE AUCTION**

Saturday, February 23rd - 11 AM

### **Convention & Antique Show & Sale**

JUNE 28, 29, 30, 1985

All the above events will be held at the  
**THE SHENANDOAH INN**

P.O. Box 147, Old Washington, Ohio 43768  
I-70, Exit 186 — 7 Miles E. Of Cambridge  
Phone 614-489-5511

***Mention NCC When Making Reservations***

**N.C.C. MUSEUM**

**WILL OPEN MARCH 1ST!**

**HAVE  
YOU**   
**OBTAINED A  
NEW MEMBER?**

National Cambridge Collectors, Inc.  
P. O. Box 416 Cambridge, Ohio 43725

FIRST-CLASS MAIL  
U.S. POSTAGE  
**PAID**  
So. Vienna, Ohio  
45369  
Permit No. 15

**FIRST CLASS MAIL**

FEBRUARY

1985