

Cambridge



Crystal Ball

ISSUE NO. 141

JANUARY 1985

Published monthly by the NATIONAL CAMBRIDGE COLLECTORS, Inc.
To encourage and to report the discovery of the elegant and boundless product
of the Cambridge Glass Company, Cambridge, Ohio

THOUGHTS FROM YOUR PRESIDENT

I'm having an awful time getting this article started. I can't type to begin with and there seems to be something wrong with the letter "G." I'll just bend that devil a little bit, right up there where it goes into that little slot, just before it hits the paper. There, now I'll try it. H H H H H Whoops! I must have bent it too much and got it wrapped around the "H" key. A little more adjustment here. There we go. G G G G G Ah! Works perfectly now!

It's cold here. Down to six above this morning and didn't get above sixteen all day. I envy you people in the warmer climates this time of year. Of course there are members who probably envy me for living where the temperature was as high as six above. Remember when we were all young and we would come home from school at about 3:30, grab a bite to eat and then go out and ice skate or sled ride until 8 or 9 o'clock? Never knew what cold was, did we? I think our body furnaces wear out after awhile don't they?

I don't know what to write about. We've fixed the typewriter, and discussed the weather. Kids! Let's talk about kids. Have you ever been conned by your kids? Maybe they don't exactly con us . . . but they sure do work us into situations where we are the victims of

the circumstances. My daughter for instance. She's planned a Christmas party at our house. Maybe 10 or 12 kids. It's going to be one of those dinner parties and she's going to fix all the food, do all the cleaning, etc.!

They got together and decided to have lasagna . . . made from scratch, no less! So far, I've been conned into making the noodles for the lasagna and putting it all together. Lisa did make the sauce. It's all ready to pop into the oven tomorrow . . . only thing is that someone else will have to "pop" it in as she works till 5 pm and they are going to eat at 6! The salad will have to be made, the italian bread and the dessert prepared, the table set and as we speak, it is now 10 pm the night before and she's sitting out in the kitchen with her sister and a friend playing "Trivial Pursuit." Now, so far everything is just fine, except that Norma and I have been told that we will have to find somewhere to go tomorrow evening because we are not invited guests. (Of course we can't leave until dinner is served!) I assume we will have to return rather quickly because I overheard them talking about going to "The Glass House" at Oglebay Park to dance right after dinner. Do you suppose we are going to get stuck with doing the dishes too??

Perhaps the phrase "being conned" is too harsh, for we all do this sort of thing because we love our children, if we are so blessed, for if we were not so well blessed we would do it for our fellow man. Christmas will be past when you read this, but I am sure that all of you, if you will recall, did something to help

MEMBERSHIP RENEWAL NOTICE
If the date on your address label is... **1 - 85**
This is your LAST ISSUE of the CRYSTAL BALL.
Please renew NOW!

CAMBRIDGE CRYSTAL BALL

Official publication of National Cambridge Collectors, Inc., a non-profit corporation with tax exempt status. Published once a month for the benefit of its members.

Membership is available for individual members at \$13 per year and additional members (12 years of age and residing in the household) at \$3 each. All members have voting rights, but only one *Crystal Ball* will be mailed per household.

Back issues of the *Crystal Ball* are available (beginning with Issue No. 1, May 1973) for members only. Cost \$.60 each or 12 issues for \$7.

1984-85 OFFICERS & COMMITTEE CHAIRPERSONS

PRESIDENT	Willard P. Kolb
VICE-PRESIDENT	David B. Rankin
SECRETARY	Janice Y. Hughes
TREASURER	William C. Smith
SERGEANT-AT-ARMS	Marybelle Moorehead
BUDGET & FINANCE	David B. Rankin
BY-LAWS	David B. Rankin
CONVENTION	David B. Rankin
MEMBERSHIP	Phyllis D. Smith
MUSEUM	Billy Harbaugh
PROGRAM & ENTERTAINMENT ...	Frank Wollenhaupt
PROJECT	Willard P. Kolb
PUBLIC RELATIONS	William C. Smith
PUBLICITY	Joseph Andrejcek
STUDY GROUP ADVISOR	Evelyn M. Allen
1985 AUCTION	Lynn M. Welker
1985 ANTIQUE SHOW	Joy McFadden
1985 FLEA MARKET	Larry F. Hughes
CRYSTAL BALL EDITOR	Phyllis D. Smith

CLASSIFIED ADVERTISING RATES

5c per word \$1.00 minimum
 We cannot mix type size in classified advertisements. Abbreviations and initials will count as words. Payment in full MUST accompany all ads.

DISPLAY ADVERTISING RATES

(camera ready ads preferred)

	Members	Non-Members
1 8 page (9 items)	\$4.00	\$6.00
1 4 Page (20 items)	7.00	10.00
1 2 page (20 items)	12.00	18.00
3 4 page	17.00	25.00
Full page (50 items)	22.00	33.00

DEALERS DIRECTORY

5 line maximum \$12.00 for 12 months
 Cambridge *Crystal Ball* assumes no responsibility for items advertised and will not be responsible for error in price, description or other information.

Advertising copy, articles, club news and notices must be in our hands by the 10th of each month to assure publication in our next issue. Advertisements containing reproductions will not knowingly be accepted unless clearly stated.

Opinions or information stated in any signed article or letter printed in the *Crystal Ball* are those of the authors and may or may not agree with National Cambridge Collectors, Inc. The Editor reserves the right to refuse and to edit any material submitted for publication so as to conform with the editorial style of the *Crystal Ball*.

PLEASE ADDRESS ALL CORRESPONDENCE TO

National Cambridge Collectors, Inc.
 P.O. Box 416 Cambridge, Ohio 43725

PRESIDENT: Willard Kolb 614/695-0695
SECRETARY: Janice Hughes . . . 614/432-7823
EDITOR: Phyllis Smith 513/323-3888

NCC MUSEUM of Cambridge Glass is located on U.S. Route 40, 1/8 mile east of I-77 near Cambridge. Hours: 12 noon to 4 PM - Wednesday thru Sunday. (March thru November)

PLEASE NOTIFY US IMMEDIATELY OF ANY CHANGE IN YOUR ADDRESS

Please enclose a SASE when requesting information

THOUGHTS continued from page 1

your fellow man while remembering the true meaning of Christmas this year.

Next month I will try to settle down and bring you up to date on Club activities. Promise.

Start making plans to attend the ANNUAL AUCTION and QUARTERLY MEETING in February.

"A HAPPY AND PROSPEROUS NEW YEAR TO ALL OF YOU!" WILLARD

Looking ahead to . . .

CONVENTION '85

by Phyllis Hayes

AMBER is the Cambridge color for the 1985 Convention. Your Banquet Tables Decorating Committee has already started making plans for this special Convention activity.

If you are planning to attend the Convention Banquet this year, won't you please loan this committee at least one console set to be used during the banquet to help decorate the tables. This takes such a small amount of your time and effort and yet adds so much to the beauty and enjoyment of the evening for all who attend.

The Committee would like to use amber console sets and crystal two-lite epergnes with bud vases. Many sets will be needed so any help you can give will be greatly appreciated.

Please let the committee hear from you as soon as possible so that they can make their plans accordingly. Please write to: Phyllis Hayes, 6067 King Arthur Drive, Swartz Creek, MI 48473.

DON'T FORGET THE AUCTION!
The Date is FEBRUARY 23, 1985 - 11 AM.
Your list with all the details is enclosed with this issue.

CAMBRIDGE JUGS

PART V

by MARK NYE

3900 LINE—CORINTH JUGS

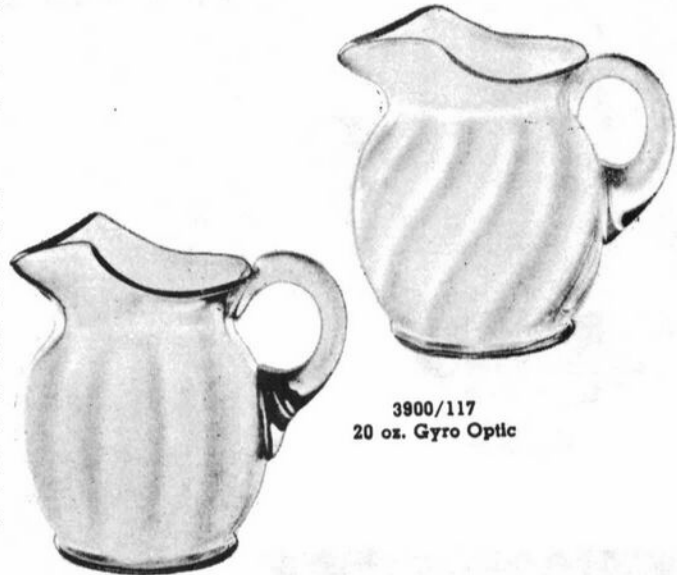
During the past few months Cambridge pitchers, shown in the 1940 catalog, were discussed. Our attention now turns to the catalogs and supplements issued by Cambridge between June 1949 and their final closing.

Several of the jugs offered during those years were previously covered, but . . . within the pages of the 1949-53 catalog we find five in the Corinth line, two in the Heirloom pattern (which was a continuation of the Martha Washington line) and two from the short lived milk glass line . . . none of which have yet been discussed in this series of articles! No new jugs were designed and produced during the reopen period but several jugs first produced in earlier years continued to be a part of the Cambridge line until the very end.

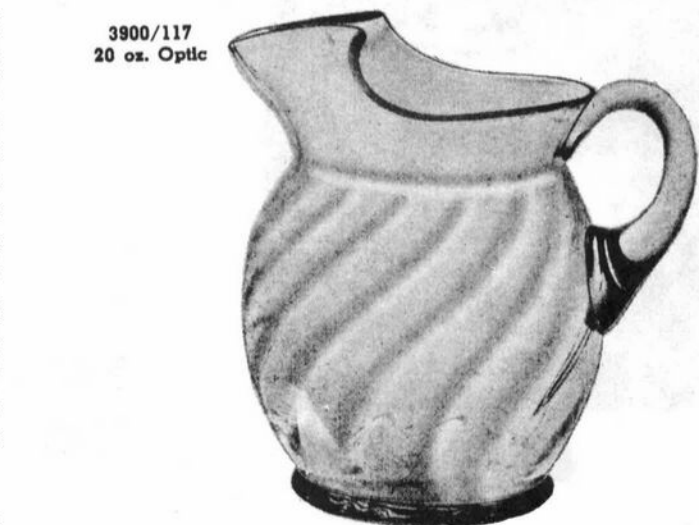
With one exception, the five jugs in the #3900 Corinth line are simply extensions or reworks of old Cambridge friends. The 20 oz. #3900/117 and the 32 oz. version of the same style, #3900/118, are similar in design to the Pristine #70 20 oz. jug (see December 1984 C.B., page 5 for picture). The #3900/115 is an extension of the #3400/100 jug and the #3900/116 is an offspring of the grandfather of all ball jugs, the #3400/38 jug (see black inserts on page 5 for examples of these earlier #3400 line jugs). Apparently the only new jug in the Corinth line was the #3900/114 32 oz. martini which does not seem to come from an earlier pitcher or jug.

The Corinth jugs #115, #116, #117 and #118 were made in crystal as well as moonlight, amber, amethyst, emerald and mandarin gold. While the catalog pages show these jugs with two types of optic design, straight and gyro, the existing price lists make no differentiation and thus it is not clear if both types were made in all the colors . . . it can only be assumed that they were.

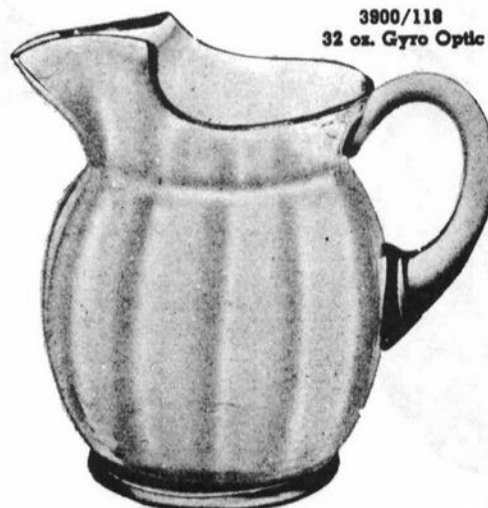
The #3900/114 martini is unique among the #3900 jugs in that it was not listed as being made in color. It was made non-optic as well as optic and according to available price lists, was not produced with the gyro optic pattern. Exactly when during the late 1940s the Corinth jugs were introduced was not determined, but the martini was available when the



3900/117
20 oz. Gyro Optic



3900/117
20 oz. Optic



3900/118
32 oz. Gyro Optic

3900/118
32 oz. Optic

continued on page 5



The Cambridge Glass Company



3900 LINE—CORINTH JUGS AND TUMBLERS



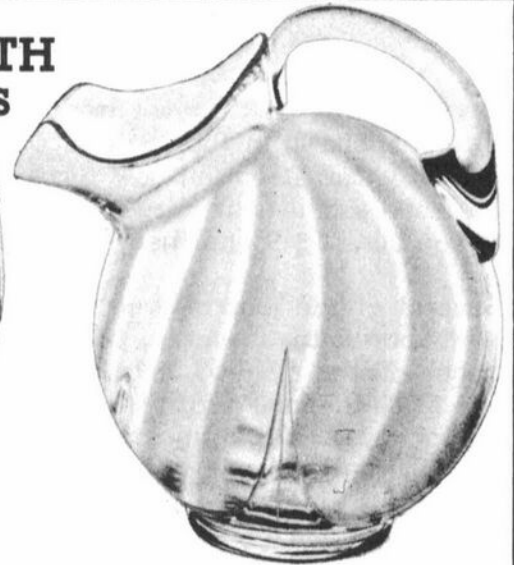
3900/115
76 oz. Optic



3900/115
13 oz. Optic



3900/116
13 oz. Optic



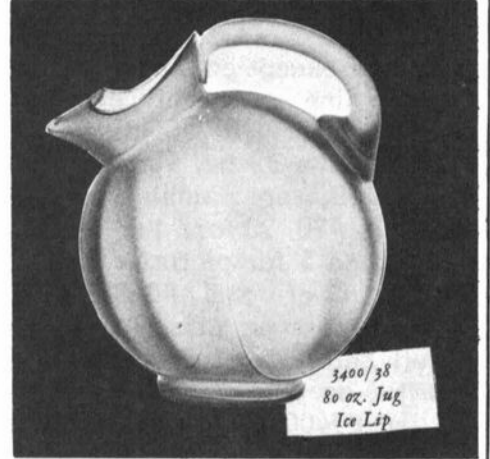
3900/116
80 oz. Ball
Optic



3400/100
76 oz. Jug



3900/114
32 oz. Martini



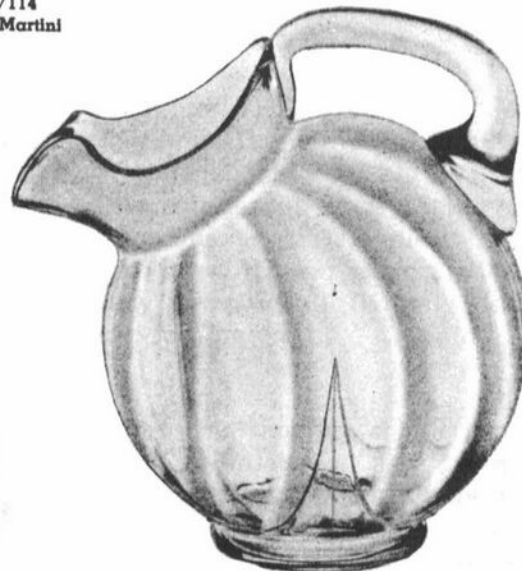
3400/38
80 oz. Jug
Ice Lip



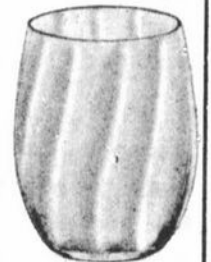
3900/115
76 oz. Gyro Optic



3900/115
13 oz. Gyro Optic



3900/116
80 oz. Ball
Gyro Optic



3900/116
13 oz. Gyro Optic

1949 catalog was initially issued in June of that year.

The martini jug, like all of the #3900 jugs was produced in crystal, plain or etched Candlelight, Chantilly, Diane, Elaine, Portia, Wildflower, and Rose Point. In addition to these etchings, the martini pitcher was also etched Vichy and Magnolia . . . the only Corinth jug to be decorated thusly.

Only three of the five Corinth jugs were decorated with rock crystal cuttings . . . the martini and the #115 and #117. The martini jug was listed in the September 1950 price list as being available with the King Edward cutting. The next available complete price list is dated October 1953 and it had the martini listed as being cut Harvest, King Edward, Rondo, Lattice, Swirl, Star and Fleur-de-Lis. During the reopen period, the #3900/114 martini was also cut Wedding Rings.

The origins of the #3900/115 jug extend back into the 1930s when an optic version of the #3400/100 jug was made. It, however, had no ice lip and hence the top was slightly different in shape. The #3900/115, in addition to the previously listed etchings, was also included in the Roselyn line. This jug was extensively used for rock crystal cuttings: King Edward, Harvest, Rondo, Bexley, Laurel Wreath, Thistle, Lynbrook, Radiant Rose, Roxberry, Tempo, and #1064 and #1065 will be found on this jug.

The #3900/115 jug made the transition into the reopen period with color production ceasing sometime in 1957. It remained available in crystal, plain or etched Chantilly, Rose Point, and Wildflower until the final closing. The last Cambridge price list issued in 1958 also had this jug available with many of the following listed cuttings: Harvest, King Edward, Laurel Wreath, Lynbrook, Radiant Rose, Rondo, Roxberry and Tempo.

The #3900/116 jug represents the final use of the ball shape design which was first introduced in 1930-31. Neither of the #3900/116 jugs, optic or gyro optic, are "new" in that they very closely resemble earlier jugs. An optic #3400/38 80 oz. ball jug was shown by Cambridge in 1933 and the original Gyro Optic line, including jugs, was introduced in 1938. The #3900/116 jugs do have openings that are larger than those found in their predecessor and at the same time, these larger

openings vary slightly in shape. While not listed as being decorated with rock crystal cuttings, the #3900/116 jug was etched Candlelight, Chantilly, Diane, Elaine, Portia, Rose Point and Wildflower as well as Roselyn. With the exception of Candlelight and Portia, the #3900/116 jug was offered with these etchings in the October 1953 price list, the last listing for this jug.

The #3900/117 and #3900/118 jugs have almost identical histories except that in addition to the etchings previously listed as being found on all Corinth jugs, the #118 was also etched Roselyn which the #117 was not. The #117 was cut King Edward with the #118 never listed with a cutting. Both jugs continued to be offered during the early years of the reopen period but do not appear after March of 1956. At that time, they were available in crystal, plain or etched Chantilly,



5000/79
32 oz. Jug



5000/80
80 oz. Jug

continued on page 6

CAMBRIDGE JUGS . . . continued from page 5

Rose Point, and Wildflower, and in amber, amethyst, emerald, and mandarin gold. The #117 was still available with the King Edward cutting.

At first glance the Heirloom #5000/80 80 oz jug appears to be the same as the Martha Washington #30 80 oz. jug. While the basic shape remained the same, they are not the same jug. The most readily noticeable difference being the Heirloom jug does not have a foot. The second Heirloom jug, the #5000/79 32 oz. takes the same shape as the #41 cream. This shape was first used for the Martha Washington #1 cream which in the Heirloom line was known as the #5000/44 footed cream. (See page 5 for the Heirloom #5000/80 and 79 jugs. The Martha Washington jug is shown here so you may compare them.)

The Heirloom jugs, introduced in late 1952 or early 1953, were made in crystal during the relatively short production period. Short, since they were not a part of the Cambridge line during the reopen period.

The #5000/79 jug was also made in milk glass and as such was known simply as W60 32 oz. jug. One other milk glass item, the W54 32 oz. jug brings us to the last of the Cambridge jugs. The W54 obviously was from a mold



*Martha Washington
30. 80 oz. Jug*

dating to a much earlier period and strictly speaking was not a new jug at the time. Either of the milk glass jugs would be a welcome addition to a Cambridge pitcher collection since they are rarely seen.

The five Corinth jugs expanded into all their colors, etchings and cuttings, as well as optic patterns, give us a total of 111 different jugs. Add the Heirloom and milk glass jugs and we are off and running . . . looking for 115 Cambridge jugs to add to our collection! Happy Collecting.



The Cambridge Glass Company



CAMBRIDGE MILK GLASS

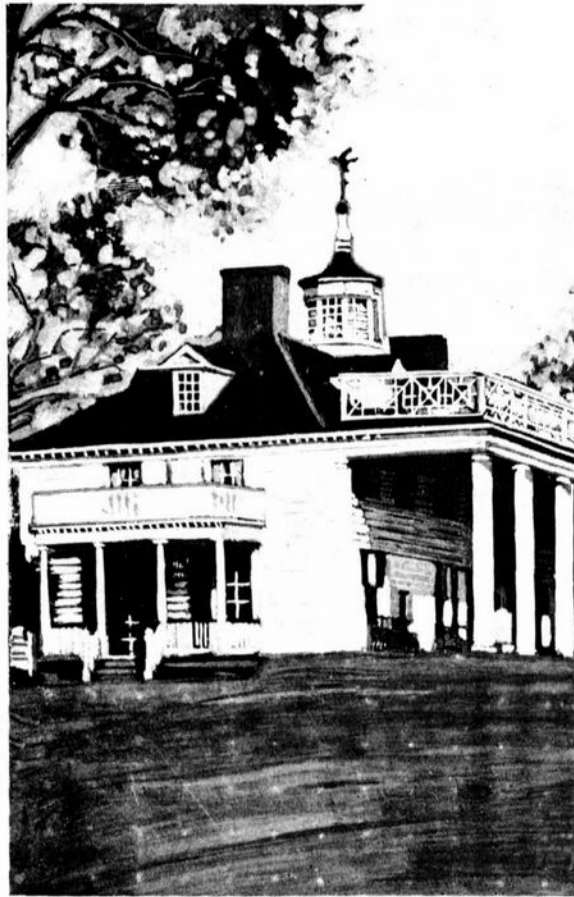


W 54
32 oz. Jug



W 60
32 oz. Jug

“MOUNT VERNON”



MOUNT VERNON is an early American Design in a brilliant crystal. Inspired by worthy tradition and executed with true craftsmanship, it lends itself very naturally to the Early American ensemble.



Our Label On Each Piece

The **CAMBRIDGE GLASS COMPANY**

CAMBRIDGE, OHIO.

INCORPORATED 1901

“MOUNT VERNON”
EARLY AMERICAN GLASSWARE
OF FINEST QUALITY
AND DESIGN



« « Permanent Displays and Sales Offices » »

THE CAMBRIDGE GLASS COMPANY,
184 Fifth Avenue,
NEW YORK, N.Y.

THE CAMBRIDGE GLASS COMPANY,
Room 1547-The Merchandise Mart
CHICAGO, ILLINOIS

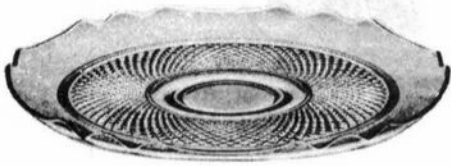
A. H. RENWICK,
946 South Flower Street
LOS ANGELES, CALIFORNIA

JOHN A. NIXON,
924 Filbert Street, - 2nd Floor,
PHILADELPHIA, PA.

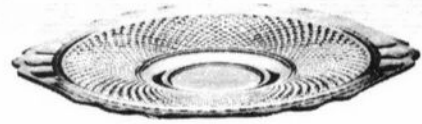
A. L. INGALLS,
401-2 Insurance Bldg.,
DALLAS, TEXAS

W. A. SONGSTER,
1601 Emerson St.,
DENVER, COLO.

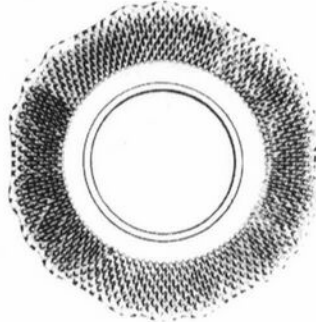
"MOUNT VERNON"



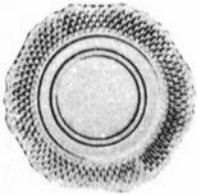
93
14 IN. TORTE PLATE
\$ 22.50 DOZ.



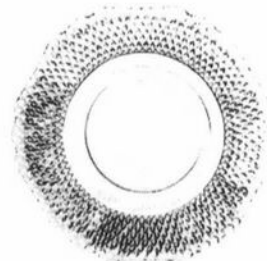
37
11½ IN. 2 HANDLED PLATE
\$ 16.50 DOZ.



40
10½ IN. DINNER PLATE
\$ 11.90 DOZ.



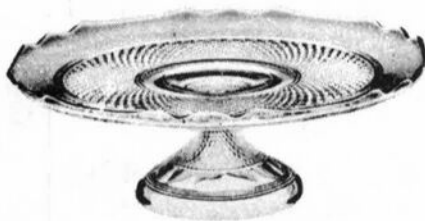
19
6¾ IN. B. & B. PLATE
\$ 4.20 DOZ.



5
8½ IN. SALAD PLATE
\$ 7.40 DOZ.



9
COVERED URN OR CANDY JAR
\$ 15.00 DOZ.



49
13½ IN. FOOTED CAKE PLATE
\$ 31.60 DOZ.



73
BUTTER TUB & COVER
\$ 7.50 DOZ.



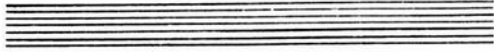
48
11 IN. TOM & JERRY OR FRUIT BOWL
\$ 27.50 DOZ.

THESE PRICES ARE FOR CRYSTAL AND REPRESENT HIGH RETAIL PRICES
THIS LINE IS ALSO MADE IN CARMEN (RUBY) SEE SEPARATE PRICE LIST



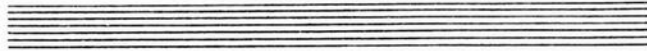
Our Label On Each Piece

NO AUTOMATIC
MACHINES USED



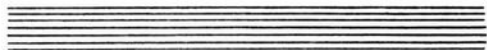
Our Label On Each Piece

MAKE ONLY HAND MADE
QUALITY GLASSWARE



Our Label On Each Piece

AN AVERAGE OF
700 EMPLOYEES



Study Club News

STUDY GROUP #5 - SOUTHERN CALIFORNIA "CALIFORNIA CAMBRIDGE COLLECTORS"

The Christmas meeting of the California Cambridge Collectors was held December 1st with eight members and one guest present. First we had dinner at a local restaurant and then went to Jim and Joan McDowell's for our gift exchange, dessert, champagne, eggnog, etc.

Our gifts were all Cambridge glass including some rare pieces such as the swan punch cup and a pressed rosepoint goblet. We did not have a formal meeting, but several members brought items for "Show & Tell."

Ron Rockafellow shared a forest green #3400 cocktail/martini mixer, amber night jug and cover, and a #3400 moonlight blue optic cruet set. Bill and Betty Iosch had an amber french dressing bottle, pink 8 1/2" two-kid flower figure, Tally-Ho crystal candlestick, crown tuscan nude compote with Charleton decoration and a topaz Heirloom sugar bowl. Joan McDowell shared a pair of #3121 crystal candlesticks.

HAPPY NEW YEAR to our fellow Cambridge Collectors from all of us in California!

submitted by Joan McDowell

STUDY GROUP #6 - NEW YORK STATE "THE FINGERLAKES"

The Fingerlakes held their meeting December 2nd with six members present.

We started the meeting in Rome, NY with a "Show & Tell" session. Items included were: 32 oz. Ball jug and six tumblers in Apple Blossom etch; three-lite candlestick with Minerva etch; a Nearcut Thistle cruet; #3106 stem 1 oz. cordial w/Rosepoint etch; green Nautilus decanter w/stopper; #3500 stem covered comport etched Rosepoint; covered butter dish with Apple Blossom etch; and an amber #7966 stem Sherry.

Plans were made for the next few meetings and, after dinner, we all sat back to view the slide program from the Display Rooms of past Conventions. Much O-o-o-ing and Ah-h-h-ing came from the captivated audience. It was a

wonderful opportunity to see the unusual and rare pieces that can be so elusive. We highly recommend the Program to all.

Next meeting will take place at the Ladouceur's in North Syracuse on January 27, 1985. HAPPY HOLIDAYS to everyone from the Fingerlakes Group!

submitted by Sandra O'Donnell

STUDY GROUP #7 - EASTERN OHIO "THE CAMBRIDGE BUFFS"

Phone: 614/432-5230

The Cambridge Buffs Study Group met Friday, November 23rd at the home of Lena Barnes, with 13 members present. Charles Upton showed an old Cambridge Glass Near Cut Book. It was discussed if the Study Group would provide the program for Saturday morning for the 1985 Convention.

Our Program consisted of Cambridge salt and peppers in different patterns and several with different caps or lids. Some included in the display were: Marjorie, Silver Leaf, Rosepoint, Milk Glass, Mt. Vernon, Ribbon, Caprice with square bottom, Cambridge Square, Chantilly with sterling silver.

"Show & Tell" included such items as: a Nearcut bowl with gold; Chelsea footed comport; Arch foot Daisy tumbler with colored flowers and leaves; crystal dog bottle; ritz blue tumbler and whiskey; several baskets.

Next meeting will be held December 15th at the home of Mr. & Mrs. Dean Westfall. We will have a buffet supper and Christmas gift exchange.

submitted by Deanne Gray

STUDY GROUP #8 - SOUTHERN MICHIGAN "THE MICHIGAN CAPRICES"

Phone: 313/655-4703

The Michigan Caprices met in the home of Betty and Bob Dasen on December 7th. Six members and two guests were present. We enjoyed a delicious dinner served on lovely pink Cambridge dinnerware.

After dinner "Show & Tell" was held. Phyllis Hayes shared some treasures she had found on a recent trip to Texas. She had a beautiful

continued on page 12

STUDY CLUBS continued from page 11

shell shrimper and a shell bonbon dish in milk glass with the Charleton decoration. She also had a pink compote #520 which completed a cheese and cracker ensemble.

Betty Dasen's latest find was a small Cambridge swan. She pointed out the detailed feathering on the swan which signified it as an older piece.

After "Show & Tell", Betty and Phyllis led us in a study of Cambridge Nearcut. Betty handed out study sheets that had been prepared previously by Shirley and Don Ladouceur. We carefully examined pieces from Phyllis Hayes collection including patterns #2695, #2696, Ribbon, Inverted Thistle, Guernsey, Marjorie and Snowflake (Fernland).

The Michigan Caprices send HOLIDAY WISHES to all our Cambridge friends!
submitted by Carol Christensen

STUDY GROUP #10 - LONG ISLAND, NY
"THE TUSCAN CROWNS"

Phone: Charles or Loretta at 516/589-9168

The November meeting was held at the home of Rita Berg. Final plans for our first All-Glass Show and Sale to be held on November 23, 24, 25, were discussed. All systems go. Proceeds will go to the MUSEUM.

Two new members, Gloria and Palmer Bunger, were welcomed into our club in October, making a total of twelve.

Also discussed were plans for our Christmas meeting. We all decided to go to a restaurant for our dinner and have an All-Cambridge glass grab bag. With a limit on the amount to be spent, it should be very interesting to see what turns up.

"Show & Tell" items consisted of two footed urns on Gadroon, one in crystal with gold trim and the other carmen. Also a Rosepoint finger bowl.

SEASON'S GREETINGS to all from the Tuscan Crowns!

submitted by Rita Berg

"While we are postponing, life speeds by."
SENECA

CAMBRIDGE GLASS BOOKS FOR SALE

by National Cambridge Collectors, Inc.

- * **COLORS IN CAMBRIDGE GLASS**
(128 pages - 60 color plates - fully indexed)
Hardbound with 1984 Price Guide \$19.95
- * **1930-34 CAMBRIDGE GLASS CO. CATALOG REPRINT**
(250 page reprint of original catalog)
Hardbound with 1982 Price Guide \$14.95
- * **1949-53 CAMBRIDGE GLASS CO. CATALOG REPRINT**
(300 page reprint of original catalog)
Hardbound with 1983 Price Guide \$14.95
- * **1956-58 CAMBRIDGE GLASS CO. CATALOG REPRINT**
(164 page reprint of original catalog)
Paperback \$6.95

1982 PRICE GUIDE

for 1930-34 catalog reprint Postpaid \$2.25

1983 PRICE GUIDE

for 1949-53 catalog reprint Postpaid \$2.25

* **NCC MEMBERS ONLY:** *These publications are available at 10% discount - or all four (4) at one time for \$50.00.*

by Mary, Lyle and Lynn Welker

CAMBRIDGE GLASS CO.
(120 pages of reprint from 8 old catalogs)
Paperback \$6.95

CAMBRIDGE GLASS CO. BOOK II
(119 pages of reprint from old catalogs)
Paperback \$6.95

CAMBRIDGE, OHIO GLASS IN COLOR II
(15 color pages with descriptions and notes)
Spiralbound \$5.95

by Harold and Judy Bennett

1903 CAMBRIDGE GLASS CO. CATALOG REPRINT
(106 page reprint of an original catalog)
Paperback \$7.50

Address your orders to:

BOOKS
National Cambridge Collectors, Inc.
P.O. Box 416
Cambridge, OH 43725

Please add \$1.00 (P & I) per order.
(Not required for Price Guide)
Ohio residents please add 6% state sales tax.

DEALER DISCOUNTS AVAILABLE - PLEASE WRITE!

**COLUMBUS ANTIQUE
FLEA MARKET
(ANTIQUES & COLLECTIBLES)**

Ohio State Fairgrounds - Lausche Building
Off I-71 Exit 17th Avenue - Columbus, Ohio

JANUARY 6th

Sunday Only - 7 A.M. to 4 P.M.
Show Admission \$1.00 - Under 12 Free
150 QUALITY DEALERS

SELLING: Advertising Art Deco, books, Cambridge, clocks, coins, collectibles, Depression glass, dolls, Fiesta, fine early furniture, Heisey, jewelry, lamps, oak furniture, post cards, pottery, good primitives, tools and print shop items.

STOCKWELL PROMOTIONS

4214 North High Street
Columbus, Ohio 43214
(614) 267-8163/263-6830/885-2352

NEXT SHOWS: February 24, April 21, May 12, June 23, September 8,
October 13, November 10, and December 1

— Classified —

BUYING: CAPRICE Moonlight or Rosepoint by Cambridge; Rose or Orchid by Heisey; and American, June, Fairfax, Versailles, Trojan, etc., by Fostoria. Nadine Pankow, 207 South Oakwood, Willow Springs, IL 60480. 312/839-5231.

MARK YOUR CALENDAR

Quarterly Meeting

FRIDAY, FEBRUARY 22, 1985 - 8 PM

All Cambridge Auction

SATURDAY, FEBRUARY 23, 1985 - 11 AM

Convention & Antique Show & Sale

JUNE 28, 29, 30, 1985

**All the above events will be held at the
Shenandoah Inn, Old Washington, Ohio**

STAGE COACH ANTIQUE MALL

(formerly White Pillars Antiques)

7525 East Pike
Norwich, OH 43767
614/872-3720

MANY DEALERS. . .

PLENTY OF PARKING. . .

**WIDE SELECTION OF GLASS
AND POTTERY**

**FURNITURE AND
GENERAL LINE!**

BUY and SELL

OPEN YEAR ROUND

Weekdays - 10 AM - 5:30 PM

Sunday - 12 noon - 5:30 PM

Summer Evening Hours - by Chance!

Located 9 miles E. of Zanesville, OH, on I-70 to Norwich Exit No. 164 - then ½ mile W. on Route 40.

ANDREJCAK ANTIQUES

14533 BAYES AVENUE
LAKEWOOD, OH 44107
216/226-3417 after 5 pm

AMBER

- #3400/38 12 oz. Portia etch.
glasses (3) ea.....\$50.00
#3900/116, 80 oz. Gyro Optic jug
w/2 #3900/38 12 oz. glasses.....60.00
#1321, 28 oz. Sherry w/5 #7801,
2 oz. Sherry glasses.....55.00
Weatherford celery tray.....20.00
Weatherford sherbet.....15.00
Weatherford 2-pc. mayo set.....20.00
#3500/61 6 1/2" hdl. 3-pt. relish....15.00
#1236 8" Ivy Ball.....35.00
#3400/92, 32 oz. decanter w/6
#3400/92, 2 1/2 oz. tumblers.....45.00

CARMEN

- Top Hat ashtray.....25.00
#1237 9" ring stem vase.....40.00

MILK GLASS

- W132 8 1/2" Fan vase.....35.00

WILLOW or ELEANOR BLUE

- #1715 4-pc stackaway ashtray set..30.00
#1256 Everglade Tulip 11" bowl....60.00
#955 62 oz. jug.....100.00
#728 5-pc.ashtray set, crys. hldr....40.00

FOREST GREEN

- #575 10" Cornucopia vase.....45.00
#1307 3-lite candlestick (pr.).....90.00
#3500/15 ind. cream/sugar (pr.).....25.00

CRYSTAL

- #1114 6" Bashful Charlotte.....50.00
#1263 French dressing bottle.....30.00
Eagle bookends (pr.).....150.00
NearCut Fernland pitcher.....40.00
Pristine cocktail shaker 48 oz.....30.00
#293 6 oz. Pristine oils (2) ea.....20.00
Cleo etch. wines (4) ea..... 25.00
Apple Blossom etch. wines (3) ea...22.00

PINK

- Diane etch. fruit saucers (2) ea.....25.00

FARBERWARE

- Forest Green 32 oz. decanter w/4
#3400/92 2 1/2 oz. tumblers
on tray (set).....60.00

MINT & EACH UNLESS NOTED!
POSTAGE & INSURANCE EXTRA!

MARY E. COLELLA

83 RIVERSIDE DRIVE
BINGHAMTON, NY 13905
Phone: 607/724-1470

I am an NCC member/collector selling a few miscellaneous pieces of glass. All items are undamaged unless noted. Orders accompanied by money order, postage, and insurance will be shipped when received. Non NCC member personal checks must clear first. Good will and honesty are important. If the glass is not as described, please return it.

-
- P499 Calla Lilly crystal
candlesticks (pair) 25.00
P499 Calla Lilly emerald green
candlestick (only one) 20.00
#646 5" keyhole candlestick
(only one) 10.00
Star 2 4" star candlesticks (pr.) 13.50
#1070 36 oz. Pinch decanter,
amethyst w/5 2 oz. glasses (set)40.00
Same as above, but rim bruise
(minor) w/4 glasses (set 32.50
#3400/92 32 oz. decanter, amethyst
w/4 2 1/2 oz. glasses (set) 42.50
#3400/119 12 oz. decanter, amethyst
w/4 #1341 1 oz. glasses (set) 32.00
Same as above but in emerald green
w/5 #1341 glasses (set) 40.00
Caprice #124 8 1/2" 3-part celery
and relish, crystal 12.00
#3900/41 cream & sugar
Chantilly etching (set) 22.50
#3400/646 candlestick, Apple
Blossom etching (one only) 17.00
Caprice #96 salt & pepper, no
tops, crystal (set) 12.00
#1238 14" keyhole ftd. vase
amethyst 40.00
#1238 10" keyhole ftd. vase
emerald green 35.00
#3797 Cambridge Square sherbet 8.50
Everglade/30 16" plate (swan) 35.00
Everglade/26 cream/sugar, crystal 25.00
#731 pattern 11" low ftd.
comport, green 20.00
#3400/68 Gloria sugar, lt. yellow 12.50
Caprice #113 ftd. comport
handles up 18.50
Caprice #40 ind. sugar/cream
crystal (set) 15.00

DEALERS



DIRECTORY

NOTE: When writing to the Dealers listed here, please enclose a SASE!

<p>EVELYN M. ALLEN 135 Cynthia Street Heath, Ohio 43055 Mail Order & Shows 614-522-1635 SPECIALIZING IN CAMBRIDGE GLASS!</p>	<p>BENICIA ANTIQUE SHOP 305 First Street Benicia, California 94510 OPEN 11 AM - 5 PM Closed Monday Z. E. LOPES 707-745-0978</p>	<p>CHARLES MIKULIK Box 416 Elizabeth, N.J. 07207 — COLLECTOR — Always paying good prices for CAMBRIDGE CAPRICE in all colors 201-688-1144 CARRY MOST TYPES OF ANTIQUES</p>
<p>ANDREJCAK'S ANTIQUES 14533 Bayes Ave. Lakewood, Ohio 44107 Joe & Karen Andrejcek 216-226-3417 SHOWS ONLY — CAMBRIDGE — FENTON — CHINA</p>	<p>VISIT HISTORIC BENICIA and its 28 shops Off Interstate #80 North of San Francisco</p>	
<p>THE ANTIQUERY 42 E. Main St., St. Rt. 40 New Concord, Ohio 43762 Ph. 614-432-4483 Richard Bennett <i>Specializing in Cambridge Glass</i></p>	<p>BERKELEY ANTIQUES 69 Berkeley St. Boston, MA 02116 George or Frank 617-426-1048 CAMBRIDGE, HEISEY, GENERAL LINE</p>	<p>BETTY'S ICE HOUSE ANTIQUES 517 Fulton Street Wausau, Wisconsin 54401 Quality Antiques Cambridge - Heisey - General Line Betty R. Puestow Hours 1-5 Daily 715-848-7145 or by appointment</p>
<p>BLUE BONNET SHOPPE at The Main Place 102 West Mistletoe at Main San Antonio, TX 78212... 512/736-4900 Antiques, Crystal, Collectibles! Open 7 days!</p>	<p>D & D ANTIQUES Columbus, Ohio DICK SLIFKO SHOWS ONLY</p>	<p>THE FLOWER FROG 106 E. Cairo Dr., Tempe, AZ 85282 MAIL ORDER and SHOWS Pat Binkley 602/967-1373 CAMBRIDGE HEISEY FOSTORIA</p>
<p>THE GLASS CUPBOARD 39 Shire Oaks Drive Pittsford, New York 14534 Marcia Ellis 716-586-7596 CAMBRIDGE ONLY INQUIRIES INVITED</p>	<p>THE GLASS MENAGERIE Unit 4, Plaza 20, Route 50 North Easton, MD 21601 Barbara & Bill Danels 301/822-8794 SPECIALIZING IN GLASSWARE OF THE DEPRESSION ERA</p>	<p>GLASS RAINBOW of California P.O. Box 127, Elk Grove, CA 95624 Neil & Ervina McCartney Hours: 9am-4pm & 7-9pm 916/685-5485 BY APPOINTMENTS & SHOWS!</p>
<p>PEG AND DALE GOTSCHALL 833 N. 6th Street, Cambridge, OH 43725 ANTIQUES and COLLECTABLES including quality crystal and colored glass Hours by Chance or Appointment 614/432-5529</p>	<p>GREEN ACRES FARM 2678 Hazelton Etna Rd., Pataskala, OH 43062 (State Route 310 North) Sat. & Sun. 1-7 PM 614/927-1882 Antiques, Crystal Glass and Collectibles</p>	<p>HENDERSON'S ANTIQUES 303 Guilford Ave., Woodfield, OH 43793 Mary & Wilbur Phone: 614 472-1133 SPECIALIZING IN CAMBRIDGE GLASS Shows, Mail & Stagecoach Antique Mall</p>
<p>THE HITCHING POST 7467 S. R. 88 Ravenna, OH 44266 Ph. 216-296-3686 D. McDaniel CAMBRIDGE — HEISEY — GENERAL LINE</p>	<p>GEORGE HOFFMAN ANTIQUES 129 South 4th Street Newark, Ohio 43055 614-345-8021</p>	<p>1886 HOUSE East Schodack, N.Y. 12063 MAIL and SHOWS Laurie Cruise 518-477-5895 CAMBRIDGE - NORITAKE - AZALEA - D.G.</p>
<p>YOU CAN ADVERTISE YOUR ANTIQUE SHOP HERE! 1 inch — \$12 for 12 months</p>	<p>SHIRLEY S. LADOUCEUR Antiques and Collectibles Specializing in Cambridge Glass BY APPOINTMENT 7597 Daphne Drive 315-458-5297 No. Syracuse, NY 13212</p>	<p>MARGARET LANE ANTIQUES 2 E. Main St., New Concord, OH 43762 Lynn Welker 614/826-4418 CAMBRIDGE GLASS MATCHING SERVICE Hours Mon.-Fri. 1-5 PM or by Appointment</p>
	<p>AL STEELE Westerville, Ohio 614-882-6483 or 614-882-7124 Mail Orders and Shows Only HEISEY — CAMBRIDGE — PATTERN GLASS</p>	<p>YOU CAN ADVERTISE YOUR ANTIQUE SHOP HERE! 1 inch — \$12 for 12 months</p>

N.C.C. MUSEUM

we are continuing to grow!

For those who live so far away, and have not yet been able to visit the NCC MUSEUM, here is a short pictorial view of the outside. It will give you an idea of the progress we have made over the past almost four years.



Shortly after purchase in 1981 - not much to look at back then.



1982 saw us hard at work. We had a lot of "vision" and "hope for the future."



Our dreams had at last come true. Our MUSEUM was opened on June 25, 1982!



The front entrance as it looks today. The new roof line improved the looks of the building.



We will be open again the 1st of March. PLEASE PLAN TO VISIT WITH US SOON!

National Cambridge Collectors, Inc.
P. O. Box 416 Cambridge, Ohio 43725

FIRST-CLASS MAIL
U.S. POSTAGE
PAID
So. Vienna, Ohio
45369
Permit No. 15

FIRST CLASS MAIL

JANUARY

1985



NATIONAL CAMBRIDGE COLLECTORS, Inc.
AUCTION INFORMATION

TIME: February 23, 1985 PREVIEW: 9:30A.M. AUCTION: 11:00A.M.

LOCATION: Shenandoah Inn
Intersection I70 & Route 285
Old Washington, Ohio (6 miles East of Cambridge)

AUCTIONEER: Craig Connelly ADMISSION: \$1.00

All glass guaranteed to be Cambridge. The auction committee has attempted to check all glass to be auctioned. All pieces should be examined immediately and returned before five items are sold if the article is not as represented. Any damage is indicated in this catalog. If no color is indicated, the item is Crystal.

TERMS: Cash or check with proper identification, day of sale. All sales are subject to Ohio Sales tax. 6% sales tax will be charged. Dealers may sign an exemption form if the items purchased are for resale, in which case, no tax will be charged.

CATALOG INSTRUCTIONS: Number references may be found in the National Cambridge Collectors' books or as indicated. The number in parenthesis () at the end of each listing indicates the amount of items of that particular listing to be sold. Bidding will be by the piece if a number occurs at the end or as a lot if pair or set is indicated. You may buy one of an item.

MAIL BIDS: All bids must be accompanied by a check for each item or lot. Bids will be executed secretly, and the bidder will pay only the final auction price. Please include a stamped, self-addressed envelope with bids. You will be notified if you were the successful bidder. If not, your check(s) will be returned and the final selling price will be noted. Ohio residents, please include 6% sales tax or your Vendor's #. If you wish to have the pieces shipped to you, please include a separate check for adequate postage. All pieces will be shipped via UPS the week immediately following the auction. All items are sold in perfect condition unless noted, and you may expect to receive them that way if you mail bid. All items will be carefully checked again before they are shipped. For additional information: Phone (614) 826-7414.

Bids must be received by February 22 to be eligible.

MOTEL RESERVATIONS: Phone (614) 489-5511. Mention N.C.C. for reasonable rates. Food is available on the premises.

QUARTERLY MEETING: Friday, February 22, 1985 at 8:00 P.M. An informative meeting will be presented as well as a preview of the auction glassware. Bring a friend and your Show and Tell glass.

Additional auction catalogs: \$1.00 postpaid or at the door.

Address Mail Bids to: Lynn Welker
2 East Main
New Concord
Ohio 43762

Checks payable to:
National Cambridge
Collectors, Inc.

1. Primrose 10" rectangular dresser tray
2. #639 Amber Etch #739 4½" candlesticks (pair)
3. #1139 Peachblo Everglades (swans) 14" flip bowl
4. #870 Ebony Decagon 11" handled sandwich tray
5. #16 Jade 7½" bowl
6. #13 Moonlight Blue Everglades (tulips) 13" bowl
7. #M250 Emerald Martha individual sugar & creamer (pair)
8. #3450 Forest Green Nautilus salt & pepper (pair)
9. #3400/55 Gold Krystal Etch Appleblossom cream soup, sgd.
10. #173 Peachblo Etch #732 oval hdd. tray, part gold encrusted
11. #782 Ebony #736 Etch 8" vase
12. #1402/6 Tally-Ho 6½ oz. low sherbet, Dec/1007 (4)
13. #1402/24 9½" plate matches above, NCC 30-34, page 32-34
14. #3400/38 Amber 80 oz. ball jug & (4) #3400/38 tumblers (set)
15. #3400/38 80 oz. ball jug, Sterling overlay Lily of Valley
16. #54 Helio 7" footed bowl (comport)
17. #52 Forest Green Mt. Vernon 40 oz. decanter & stopper
18. #84 Carmen Mt. Vernon 14 oz. stein, crystal handle, sgd.
19. #870 Amber Etch #739 Decagon 11" handled sandwich tray
20. Ivory 6½" (plus handles) 3 section relish
21. #3115 Topaz 9 oz goblet Etch #731, Willow blue stem, ground
22. #3400/25 Amber Etch Diane 5" bonbon
23. #3400/11 Amber Etch Portia 3 pc. mayo,sgd., minor chip foot
24. #14 Jade 10" bowl
25. Jade 8½" Twist candlesticks (match above) (pair)
26. #687 Light Emerald Etch Cleo candlesticks (pair)
27. #1402/67 Forest Green Tally-Ho 5" comport
28. #3200 Cut Wild Rose punch bowl base only
29. #102 Amber Mt. Vernon 2 handled urn salt, signed
30. #702 Crown Tuscan miniature cornucopia (2)
31. #1128 Crystal Scotty bookend (1)
32. #3400/92 Amethyst 32 oz. decanter & (5) #3400/92 barrels (set)
33. #1236 Amethyst ivy ball, crystal stem & foot.
34. #1236 Carmen ivy ball, crystal stem & foot
35. #1236 Royal Blue ivy ball, crystal stem & foot
36. #1236 Amber ivy ball, crystal stem & foot
37. #1236 Forest Green ivy ball, crystal stem & foot, stained
38. #1236 Crown Tuscan ivy ball, Cambridge label, bubble on foot
39. #1236 Ebony ivy ball, crystal stem & foot, tiny chip at top
40. #1066 Amethyst ivy ball, crystal stem & foot, suncolor foot
41. #1066 Carmen ivy ball, crystal stem & foot
42. #1066 Emerald ivy ball, all Emerald, rare
43. #3400/45 Crown Tuscan 11" 4 ftd. bowl, crimped
44. #6004 Crown Tuscan 12" ftd. vase, Cambridge label
45. #575 9" cornucopia, ruffled top, King Edward cut, Sterling foot
46. #274 Light Emerald Etch Betty 10" vase, platinum trim
47. #3400/33 Gold Krystal Etch Appleblossom 11½" flip bowl
48. #P499 Calla Lily candlesticks & #3400/48 13" ftd. bowl (set)
49. #319 Carmen 9 oz. Georgian tumbler (2)
50. #319 Mandarin Gold 9 oz. Georgian tumbler
51. #319 Amethyst 9 oz. Georgian tumbler (2)
52. #316 Heatherbloom Georgian sundae
53. #94 Rubina 6½" sweet pea vase
54. Amber Farber stem cocktail
55. Forest Green Farber stem cocktail
56. #747 Ebon (sandblasted Ebony) cigarette box & cover
57. #737 Ebon 7" oval canoe ashtray
58. #7966 goblet, gold decorated Woodlily (4)
59. #2 Crown Tuscan 7" Seashell plate, enamel roses & gold
60. #1320 Amber decanter, orig. stop, Farber Duchess Lace holder

61. #135 Carrara 10" cheese & cracker set, gold encr. flowers, rare
62. #1402/100 Amber Tally-Ho 5 oz. ftd. tumbler (3)
63. #1041 Peachblo 4½" swan, Style I
64. #1043 Emerald 8½" swan, Style III
65. #3400/1240 C. Tuscan 12" oval ftd. bowl, gold encr. Rosepoint
66. #14 Azurite 10" bowl
67. #851 Ebony Decagon ice bucket, signed
68. #1137 Crystal Blue Jay flower figure
69. #1309 Crown Tuscan 5" vase (2)
70. #116 Helio ashtray, roughness at cigarette rests
71. #3400/71 Emerald 3" 4 ftd. individual nutdish
72. #3400/71 Crystal 3" 4 ftd. individual nutdish
73. #33 Crystal Seashell 4" shell ashtray
74. #3400 Amber ball jug salt & pepper (pair) (1 lid missing)
75. #95 Amber one pound Block Optic candy jar & cover
76. #3149 Royal Blue 12" bowl & #3500/108 2½" candlesticks (set)
77. #1040 Emerald 3" swan, Style III (3)
78. #1040 Mandarin Gold 3" swan, Style III (2)
79. Peachblo 9½" dolphin candlestick, round Mt. Vernon base
80. #42 Crown Tuscan 8" flower center
81. #SS33 Crown Tuscan Seashell 4" 3 toed ashtray
82. #30 Rubina Block Optic 10½" bowl, lots of blue, signed
83. #21 Heatherbloom Martha Washington 83/8" plate, sgd. (8)
84. Azurite boudoir lamp, ruffled base, gold trim & fittings, rare
85. #47 Jade low footed comport
86. #3400/52 Amber butter & cover, signed
87. Opaque flesh color Yardley jar & original cover
88. Forest Green pressed Rosepoint low wine, rare
89. #12 Milkglass Mt. Vernon stemmed ivy ball, Cambridge label
90. #1299 Forest Green 11" ftd. vase, crystal stem & foot
91. #3011 Carmen 7" flared Nude comport
92. #3500/57 Amber 8" 3 part candy & cover, gold encrusted
Wildflower (minor chip on lid)
93. #1025 Ebony cigar humidior, red enamel Art Deco etching, rare
94. Cambridge factory oblong paperweight, gold decorated
95. #1371 Amethyst bridge hound
96. #1371 Crystal bridge hound
97. #1371 Forest Green bridge hound (1 w/Cambridge label) (2)
98. #1371 Mocha bridge hound, Cambridge label
99. #1211 Everglades 2 lite candlesticks (pair)
100. #3121 bell, guaranteed original
101. #595 12 oz. mugs, Gold Krystal, Forest Green, Amber, Ameth. (4)
102. #842 Light Emerald Etch Hunt Scene 12" bowl, gold encr, sgd.
103. #1095 Light Emerald Decagon sugar, creamer, hld. tray (set)
104. #103 Amber Mt. Vernon 8" 3 part relish
105. #3900/40 Corinth ind. sugar & creamer & #3900/37 tray (set)
106. Martha Washington 10" lamps, original fittings (2)
107. #1108 Light Emerald Mandolin Lady, chips bottom back edge
108. #513 Light Emerald 13" Draped Lady flower figure, minor chip
109. #1119 Eagle bookend (2)
110. #9 Carmen Mt. Vernon 8" urn & cover
111. #1305 Amber 10" vase, crystal ring stem & foot
112. #6004 Crown Tuscan 8" ftd. vase, gold encr. Rosepoint, Camb. label
113. #3400/102 Crown Tuscan 5" globe vase, gold encrusted Portia
114. #3450 Nautilus 3 oz. cruet, no stopper
115. #1123 Dresden figure, satin finish, chip on bonnet
116. #3798 Cambridge Square sherbet (2)
117. Carmen top hat ashtray
118. Topaz top hat ashtray
119. #3077 Peachblo Decagon 1 oz. cordial
120. #3077 Amber Decagon 1 oz. cordial

121. #1401 Crystal Jefferson 1 oz. cordial
 122. #3750 Crystal 1 oz. tall cordial
 123. #1327 Forest Green 1 oz. cordial, gold encrusted foot
 124. #87 Crystal Mt. Vernon 1 oz. cordial (cut leaf on one) (2)
 125. #1105 Light Emerald Etch #731 Decagon 10" vase
 126. #2651 Feather Nearcut cruet & stopper, signed
 127. #2672 Nearcut 5 oz. bottle candlestick, extremely rare
 128. Countess Nearcut night lamp & chimney, Wel. II, pg. 118, rare
 129. #2651 Feather Nearcut wine
 130. #2631 Marjorie Nearcut 14½" punchbowl & base, signed
 131. #2660 Wheat Sheaf Nearcut 7" goblet, signed (2)
 132. #2766 Thistle Nearcut Emerald tumbler, gold decorated (5)
 133. #2766 Thistle Nearcut Emerald 9" bowl, gold decorated, sgd.
 134. #2651 Feather Nearcut Marigold Carnival stem sundae, rare
 135. #1042 Crystal 6½" swan, Style III
 136. #8701 Peachblo Etch Hunt Scene 8 oz. tumbler, gold encrusted
 137. Amber Farber stem 8" tall comport
 138. Moonlight Blue 5" star candlesticks (pair)
 139. #619 Peachblo oil bottle with stopper
 140. #628 Amber Etch #1 3½" candlesticks, gold encrusted (pair)
 141. Light Emerald Etch #731 Decagon 13" flip bowl, signed
 142. #16 Ebony 7½" bowl with chrome foot, signed
 143. #422 Crystal Pristine 4" ivy ball
 144. #680 Crystal dresser compact, NCC Color, page 23
 145. Same in Ivory, rare
 146. #1108 Crystal Mandolin Lady 9" flower figure
 147. Farber cocktail shaker & (4) Ebony #3400/128 handleless
 tumblers, Farber holders, Wel. II, pg. 12 for shape (set)
 148. #7 Heatherbloom Mt. Vernon cup & saucer, signed (8 sets)
 149. #5 Heatherbloom Mt. Vernon 8½" plate, signed (8)
 150. #37 Heatherbloom Mt. Vernon 11½" handled plate, signed
 151. #11 Heatherbloom Mt. Vernon 7½" comport
- The following items (#152-180) are all Caprice:
152. #117 3 oz. oil & stopper
 153. #173 6" cloverleaf
 154. #125 12" 3 part celery & relish
 155. #301 sherbet (3)
 156. #1358 3 lite candelabra (no bobeches)
 157. #183 80 oz. ball jug pitcher
 158. #130 6" tall comport
 159. #17 cups & saucers (6 sets)
 160. #22 8½" luncheon plate (2 scratched) (6)
 161. #165 6" candy box & cover, 3 ftd.
 162. #207 3½" X 2½" cigarette box & cover
 163. #62 12½" belled bowl, 4 ftd.
 164. #70 7" candlesticks with prism (pair)
 165. #75-75 oval 3 lite epergne base
 166. #130 6" tall comport, gold stippled
 167. #38 sugar only
 168. #151 5" 2 handled jelly
 169. #152 6" 2 handled lemon plate
 170. #97 salt, pepper, & tray (set)
 171. #130 7" low ftd. comport
 172. #26 11½" 4 ftd. plate
 173. #32 11" 4 ftd. plate, rolled edge
 174. #124 8½" 3 part celery & relish, Alpine finish
 175. #214 Mandarin Gold 3" ashtray
 176. #38 Moonlight Blue sugar only
 177. #40 Moonlight Blue individual creamer only
 178. #30 Moonlight Blue 16" plate (small fracture one side)
 179. #62 Amethyst 12½" bowl, 4 ftd. (large chip 1 foot), ext. rare

- 180. #1338 Mandarin Gold 3 lite candlesticks (crack in 1) (pair)
- 181. #1040 Crown Tuscan 3" swan, Style III
- 182. #28 Amber Mt. Vernon salt & pepper (pair)
- 183. #47 Light Emerald 7" low footed comport
- 184. Light Emerald place card, Laurel Wreath border (2)
- 185. #497 Sunset Gyro Optic 16 oz. ranch tumbler, rare
- 186. 1958 Cambridge Catalog, mint condition in original box
- 187. Ebony pendant necklace, signature on front, silver mounting
- 188. #W84 Milkglass Mt. Vernon tall salt & pepper (pair)
- 189. #866 Willow Blue Decagon bouillon cup & saucer, signed
- 190. #61 Martha Washington 3½ oz. tall cocktail
- 191. #3400 Forest Green ball jug salt shaker, Farber holder (1)
- 192. #1402 Carmen Tally-Ho 10½" plate, platinum encrusted roses & scrolls all over the front, rare
- 193. 17" Crystal martini pitcher, elaborate Sterling overlay scene of 19th Hole Clubhouse, sterling on foot, extremely rare
- 194. #8 Blue Opaque experimental color 11" Seashell salad bowl, NCC Color, Plate 50, Row 2, #3, extremely rare
- 195. #11 Crystal Seashell 7" Nude comport
- 196. #3011 Amethyst 7" flared Nude comport
- 197. #3011 Carmen Nude claret
- 198. #3011 Carmen Nude goblet
- 199. #3500/44 Royal Blue 8" ftd. urn vase
- 200. #119 Ebony 7" basket, signed
- 201. #3500/26 Ram's Head fruit basket, gold encrusted Elaine
- 202. #494 Round ftd. cup, blue enamel encrusted Willow Scene
- 203. Light Emerald sponged acid lemonade mug, wide optic, signed
- 204. #163 Crystal 8½" asparagus plate
- 205. Light Emerald 9½" dolphin candlestick, round Mt. Vernon base
- 206. #3011 Mandarin Gold Nude cocktail
- 207. #3400/1240 Ebony 12" oval 4 ftd. bowl
- 208. #627 Ebony 4" candlesticks (pair)
- 209. #1040 Crystal 3" swan, Style I, signed
- 210. #1040 Gold Krystol 3" swan, Style II, signed
- 211. #3400/4 Carmen 12" 4 ftd. bowl, signed
- 212. #29 Crystal Seashell 8½" oval 2 part relish
- 213. Blossomtime #3600 6 oz. low sherbet (gold trim)
- 214. Candlelight #3400/1240 12" oval bowl, 4 ftd.
- 215. Chantilly #1617 hurricane bases (pair)
- 216. Chantilly Martha 9½" (plus handles) cakeplate
- 217. Chantilly #500/17 Pristine 10" 5 part celery & relish
- 218. Chantilly #3500/68 2 part relish, Sterling foot
- 219. Chantilly 10" flared vase, Sterling foot
- 220. Diane #3400/851 ice bucket, signed
- 221. Diane #3400/90 6" 2 part relish
- 222. Diane #3400/91 8" 3 part relish
- 223. Diane #3400/71 3" 4 ftd. individual nutdish, signed
- 224. Diane #1402/95 Tally-Ho 4 piece mayonnaise (set)
- 225. Elaine #575 10" cornucopia vase
- 226. Lorna #1307 3 lite candlesticks (pair)
- 227. Marjorie #8858 12 oz. hld. tumbler (lemonade)
- 228. Rosepoint #1338 6" 3 lite candlestick (1)
- 229. Rosepoint #3500/42 12" covered urn, rare
- 230. Rosepoint #3121 6 oz. low sherbet, gold encrusted (2)
- 231. Rosepoint #3121 6 oz. tall sherbet, gold encrusted (2)
- 232. Rosepoint #3400/152 Doulton jug, high handle
- 233. Rosepoint #3900/115 13 oz. barrel tumbler (6)
- 234. Rosepoint #3900/671 ice bucket
- 235. Rosepoint #3400/71 3" 4 ftd. individual nutdish
- 236. Rosepoint #3900/65 12" oval bowl, 4 ftd.
- 237. Rosepoint #3900/74 3 lite candlesticks (pair)

- 238. Valencia #3500/56 6" handled mayo, 4 ftd.
- 239. Wildflower #3121 1 oz. cordial (5)
- 240. Wildflower #3400/68 creamer (gold trim)
- 241. Wildflower #3400/9 7" candy lid only
- 242. Wildflower #3900/126 12" 3 part celery & relish
- 243. Wildflower #3400/4 12" bowl, 4 ftd, gold encrusted
- 244. Wildflower #647 2 lite candlesticks, gold encrusted (pair)
- 245. Wildflower #3400/141 Doulton jug, rare
- 246. Wildflower #477 9½" corn or pickle dish, gold trim
- 247. Wildflower #3900/166 14" plate, gold encrusted
- 248. Wildflower #3400/1 11" bowl
- 249. #3400/67 Amber Etch Portia 12" celery & relish service
- 250. #873 Light Emerald Etch Cleo Decagon mayo, gold trim
- 251. Amber blown candy in Farber 2 handled holder
- 252. #1005 Amber Etch #731 6½" ftd. vase
- 253. #1128 Scotty bookends (minor bruise inside 1) (pair)
- 254. #92 Crystal Mt. Vernon ice bucket
- 255. #1121 Amber Etch #695 ice bucket, signed (handle corroded)
- 256. #877 Willow Blue Etch #731 11½" Decagon comport
- 257. #870 Willow Blue 11" Decagon handled sandwich tray
- 258. #3122 Gold Krystol Etch Portia 10 oz. ftd. tumbler (3)
- 259. #3078 Amethyst 12 oz. tumbler
- 260. #1402/90 Amber Tally-Ho 6" 2 part relish
- 261. #1402/90 Forest Green Tally-Ho 2 part relish
- 262. #3400/113 Amber 35 oz. decanter & (6) #3400/127-2½ oz (set)
- 263. #597 Light Emerald Decagon 8¾" plate, signed (6)
- 264. #1402/71 Forest Green 10½" 2 hld.bowl (1 side is satin)
- 265. #925 Peachblo after dinner cup, Etch #704, signed
- 266. Crystal 4" star candlesticks (2 pair)
- 267. #603 Carmen 4" coaster plate (4)
- 268. Gold Krystol Etch Hunt Scene tall sherbet (2)
- 269. Martha Washington, 8" comport w/ #1402/100 Tally-Ho stem
- 270. #1506/3 Amber novelty basket, signed
- 271. #17 Martha Washington 7½" fan vase
- 272. #842 Peachblo Etch Cleo 12" Decagon bowl, signed
- 273. #627 Peachblo Etch Cleo 4" candlesticks, gold trim (pair)
- 274. #1348 Royal Blue 11" fluted bowl, signed
- 275. #4 Milkglass Mt. Vernon individual sugar & creamer (pair)
- 276. Arcadia Crystal 2 lite candlesticks (pair)
- 277. #1563 4 candle arm for Cambridge Arms
- 278. Blue II Etch #704 12" bowl
- 279. #1402/10 Tally-Ho 3 oz. cocktails (12), wooden carrier (set)
- 280. #3077 WillowBlue 9 oz. goblet, unknown cut (2)
- 281. Light Emerald 10" Block Optic vase
- 282. Martha Crystal 2 lite candlesticks, Sterling base (pair)
- 283. #510 Virginian Crystal 2 lite candlesticks (pair)
- 284. #960 Willow Blue Aero Optic sugar & creamer (pair)
- 285. #441 Peachblo Etch #732 10½" comport, gold trim
- 286. #22 Cascade 8½" plate (2)
- 287. #67 Cascade 5" candlesticks (pair)
- 288. Light Emerald 10" flip bowl, unknown cut, bead feet, signed
- 289. #3400/54 Light Emerald cups & saucers, signed (6 sets)
- 290. #54 Mt. Vernon Crystal 7" vase
- 291. #3797/17 Cambridge Square coffee cups & saucers (3 sets)
- 292. Peachblo Etch #731 12" star shaped tray
- 293. Everglades Crystal 6" low ftd. comport, Cambridge label
- 294. #627 Light Emerald Satin 4" candlesticks (pair)
- 295. #3500/69 6½" 3 part relish in original copper basket
- 296. #33 Crystal 4" Seashell ashtray, Alpine finish
- 297. #619 Crystal vinegar & oil on Ebony tray (signed) (set)