

Cambridge



Crystal Ball

ISSUE NO. 115

NOVEMBER 1982

Published monthly by the NATIONAL CAMBRIDGE COLLECTORS, Inc.
To encourage and to report the discovery of the elegant and boundless product
of the Cambridge Glass Company, Cambridge, Ohio

THOUGHTS from PRESIDENT WILLARD KOLB

Assuming that you have received your *Crystal Ball* prior to about 8:00 P.M. November 5th, you still have time to make plans to attend the November Quarterly on Saturday night, November 6th. That is, if you live within a few hundred miles of Cambridge. If you live locally just drop in. The only need for prior registration is for those who want to attend the dinner before the meeting. All other activities planned for the evening can be attended whether you register or not. We think you will all be interested in hearing Mr. Griffith's program related to the Cutting Department at Cambridge Glass, this coming on the heels of Sid Garrett's fine presentation at the Convention this year. It stirred up due interest in the Rock Crystal cuttings and should add to our knowledge. Don't forget the Mini-Auction. We have some little goodies for you to bid on that you may need in your collection. For all of you who like little things, there is one particular item we will auction that you will just have to have. Bring your Show and Tell items also. This can also be a very good learning tool for us. I only wish that all the people who live miles away and have been so interested in learning about Cambridge Glass, could have the same opportunity to attend our functions. We will do our best to make you feel as though you were there by covering everything comprehensively in the next issue of the *Crystal Ball*.

Did you order your cup plate(s) yet? If you haven't, please do it now. You may already be too late but give it a try. The Pairpoint Cup Plate Society members had already written to find out how they could purchase them before we had even announced their release in the last *Crystal Ball*. There are no secrets in glass collecting are there? These are neat little items and when you purchase them you will be helping us to make an already fine MUSEUM even better.

MEMBERSHIP RENEWAL NOTICE

If the date on your
address label is - -

11-82

This is your **LAST ISSUE** of the **CRYSTAL BALL**.

Please renew **NOW!**

Too early to be thinking about Christmas? Not on your life. Our local stores are gearing up already so we shall too. There is a Membership Contest again this year, and what better way to support NCC than to give a NCC Membership for a Christmas present. Our books are interesting items to glass collectors. The cup plates would be welcome small gifts, and there are still some Scotty Dog bookends left for those who have animal loving friends.

We will be celebrating Thanksgiving this month. I wish you well during your gatherings of families and friends on this very special day. I hope you will give thanks for the many blessings bestowed upon us and pray for a world that seems to be in turmoil. Let us bring ourselves to realize that although there are many shortcomings in the Country in which we live, we live free.



OOPS! A MISTAKE!

On the yellow Reservation Form attached to your October *Crystal Ball*, the hours for the Cocktail Hour and Dinner to be held with the November Quarterly Meeting were incorrectly stated. They should be: Social Hour 6:00 p.m. — Dinner 7:00 p.m. instead of 6:30 and 7:30 as stated. So please make note and be ready a little earlier.

Also, some NCC members have reported that the yellow sheet was completely missing from their October *Crystal Ball*. If yours is missing, you will not have made reservations for the dinner. But you may still do so simply by calling Janice Hughes or Willard Kolb. See page 2 for their phone numbers.

The Cup Plate order form was also included on the yellow sheet so you will not have that either. However, you may order Cup Plates by sending a check or money order to National Cambridge Collectors, Inc., P.O. Box 416, Cambridge, Ohio 43725. Price is \$7.00 each. Ohio residents add 42 cents sales tax each. They are crystal and feature a "Bulldog" motif representative of the Cambridge Pencil Dog. They were made by Pairpoint Glass in the limited number of 500.

CAMBRIDGE CRYSTAL BALL

Official publication of National Cambridge Collectors, Inc., a non-profit corporation with tax exempt status. Published once a month for the benefit of its members.

Membership is available for individual members at \$13 per year and additional members (12 years of age and residing in the same household) at \$3 each. All members have voting rights, but only one *Crystal Ball* will be mailed per household.

Back issues of the *Crystal Ball* are available (beginning with Issue No. 1, May 1973) for members only. Cost: \$.60 each or 12 issues for \$7.

1982-83 OFFICERS & COMMITTEE CHAIRPERSONS

PRESIDENT Willard Kolb
 VICE-PRESIDENT Josephine Barstow
 SECRETARY Janice Hughes
 TREASURER William Smith
 SERGEANT-AT-ARMS Don Armbricht

BOOK SALES Billy Harbaugh & Jo Barstow
 BUDGET & FINANCE David Rankin
 BY-LAWS David Rankin
 CONVENTION Josephine Barstow
 MEMBERSHIP Phyllis Smith
 MUSEUM Billy Harbaugh
 PROGRAM & ENTERTAINMENT Frank Wollenhaupt
 PROJECT Willard Kolb
 PUBLIC RELATIONS William Smith
 PUBLICITY Joseph Andrejcek
 1983 AUCTION Lynn Welker
 1983 ANTIQUE SHOW Joy McFadden

CRYSTAL BALL EDITOR Peg Gotschall

CLASSIFIED ADVERTISING RATES

5c per word \$1.00 minimum
 We cannot mix type size in classified advertisements. Abbreviations and initials will count as words. Payment in full MUST accompany all ads.

DISPLAY ADVERTISING RATES

	Members	Non-Members
1/8 page	\$ 4.00	\$ 6.00
1/4 page	7.00	10.00
1/2 page	12.00	18.00
3/4 page	17.00	25.00
Full page	22.00	33.00

DEALERS DIRECTORY

1" ad (5 line maximum) \$6.00 for 6 months

Cambridge Crystal Ball assumes no responsibility for items advertised and will not be responsible for error in price, description or other information.

Advertising copy, articles, and club news and notices must be in our hands by the 10th of each month to assure publication in our next issue. Advertisements containing reproductions will not knowingly be accepted unless clearly stated.

PLEASE ADDRESS ALL CORRESPONDENCE TO

Cambridge Crystal Ball
 National Cambridge Collectors, Inc.
 P.O. Box 416
 Cambridge, Ohio 43725

Janice Hughes, Secretary Phone 614-432-7823
 Willard Kolb, President Phone 614-695-0695

PLEASE NOTIFY US IMMEDIATELY OF ANY CHANGE IN YOUR ADDRESS!

Please enclose a self-addressed stamped envelope when requesting information!!

Study Club News

STUDY GROUP No. 5 - SOUTHERN CALIFORNIA "CALIFORNIA CAMBRIDGE COLLECTORS"

California Cambridge Collectors had a very interesting meeting at Herb and Betty Wanser's home this month. We studied smoker's items and the members shared many good examples from their personal collections.

We are still trying to get more members for our group. If anyone from the Orange County and surrounding areas is interested in joining, please contact the *Crystal Ball* and they can send me the names.

Also, current members who haven't donated the prize for this year, please do so. We should also begin on next year's prizes so start looking for a piece of Cambridge suitable. Remember, this is our only way of increasing our treasury. The prize this month was a heliotrope bowl which I was lucky enough to win.

Not too many items were shared at show and tell; further proof of the scarcity of Cambridge. Betty Losch brought along a crystal bitters bottle, Caprice blue stems and a lovely small handed basket in a gold-color filigreed basket. Betty Wanser shared a mandarin gold tall oil bottle with stopper and 3500 gadroon carmen individual creamer and sugar. She also shared another lucky find — a large marigold color rose bowl, marked Stueben, for \$4.00!

We then enjoyed some of Herb and Betty's famous beef stew with delicious rolls, salad and cake and lemonade.

submitted by Joan McDowell

STUDY GROUP No. 6 - NEW YORK STATE "THE FINGERLAKES"

The Finger Lakes Study Group changed the location of their meeting for September to Pittsford, N. Y. Five members were in attendance. A short business meeting was conducted and this was followed by a program and study period on Cruets. There were 20 different types and patterns for the members to look at and compare with those in the books for which we had no samples. Copies were made from all the Cambridge books to pass around for those who do not have all of the Cambridge reference materials. Our newest member brought a console set for Show & Tell, and it was determined that it was made by New Martinsville, and in the Radiance pattern. Sure do hope I don't get fined for mentioning one of those "other Glass Companies"! Refreshments were served and our next meeting is scheduled to be held at Jan D'Amato's apartment on the 12th of December. We are hoping to be able to show both sets of slides on Stems and Figurals at that time.

submitted by Marcia P. Ellis

STUDY GROUP No. 7 - EASTERN OHIO "THE CAMBRIDGE BUFFS"

Cambridge Buffs Study Group met September 8th at the home of Lena Barnes. Four guests were present.

Salts and peppers and relish dishes were the study. Twenty-four different patterns of salts and peppers were included. There was a milk glass Mt. Vernon in large and small sizes, Marjorie Silver Maple Leaf, Heirloom, number patterns, Cambridge Square in different sizes, Caprice, Rosepoint, Diane, Chantilly and Cambridge Square with platinum rim.

Relish dishes included Martha, Corinth, Daisy Near Cut and a 5-piece relish in a silver tray. Show and Tell included a green sugar shaker with glass top, a Daisy footed dish, Marjorie fruit bowl, Inverted Strawberry tumbler with ruby top, red and green coasters, a 3-piece green flower holder, a sweetpea vase, a banana boat on stem, a salt dip and an amethyst fruit bowl.

The next meeting will be October 13th with Tom and Deanne Gray.

submitted by Deanne Gray

STUDY GROUP No. 8 - SOUTHERN MICHIGAN "THE MICHIGAN CAPRICES"

The Michigan Caprices met September 29th at the home of Ray and Clara Brown. The Browns had helped the weekend all the Cambridge Glass was being photographed for the Color book soon to be published. Clara and Ray had taken many slides of all the beautiful Cambridge items waiting to be photographed, and they were shown to us. What a treat! We are all anxiously awaiting the day the Color Book will be available.

The Browns have been busy this summer going to Antique Shows and Flea Markets. Some of the Show and Tell items they had for us were: a Nude Stem smoke comport; a #1211 amethyst vase on a crystal keyhole base; willow blue Everglades luncheon plate; a pair of tall beautiful blue candlesticks; #344 royal blue Caprice vase; a Rosepoint Gadroon mayonnaise set; and a Rosepoint bread and butter plate. Frank and Phyllis Hayes had a Pristine ivy bowl to show. They had found it in Salt Lake City at two NCC members' shop. We do enjoy hearing what other club members are finding.

The group finished the meeting by having coffee and desert at a table on which were sitting a pair of marked Crown Tuscan #1307 three-lite candlesticks with red candles. In the center of the table was also a Crown Tuscan #3400/103 vase filled with snapdragons. The vase and candlesticks were all trimmed in red enamel. Very unusual, but lovely!

submitted by Phyllis Hayes

STUDY GROUP No. 10 - LONG ISLAND, NY "THE TUSCAN CROWNS"

The Tuscan Crowns September meeting was held at the lovely Tudor home of Marion and Arnie Callesano in Babylon, Long Island. Our study session for this month encompassed candlesticks and console bowls only. Rick Serzanin showed a Moonlight blue tri-level Caprice candle with matching wide, flared bowl. He also brought an etched set which Marion Callesano identified as #725. Both Loretta Weeks and Marion Callesano showed Rosepoint single candles and bowls; one was the four footed flat-bottomed bowl and the other the wide, flared bowl. Joyce Colangelo contributed a #494 candle etched in Rosepoint. Rita Berg brought in an unknown, marked green set and Barbara Siemsen brought in an Everglades set. Our next session will cover Crown Tuscan and its various decorations and Cambridge in Farber.

submitted by Barbara Siemsen

PLEASE NOTE!

Several NCC members are interested in forming a new Study Group in the Baltimore-Washington area. They could include New Jersey and Delaware as well, and other locations within an hour or two driving time. They have suggested that they might meet halfway between members, at a central location, or by turn in each others' homes. If you live in their area and are interested in joining a Study Group, please write Mrs. Eleanor Paulson in care of National Cambridge Collectors, Inc., P.O. Box 416, Cambridge, Ohio 43725.

1983 AUCTION CONSIGNMENT

by Lynn Welker
1983 Auction Chairman

We are still accepting consignments for the 1983 NCC All-Cambridge Auction to be held February 26, 1983 at the Shenandoah Inn, Old Washington, Ohio. All glass to be sold will be guaranteed to be old and authentic Cambridge Glass. The consignment fee is 20% with all proceeds to benefit the NCC MUSEUM FUND.

You may place as many consignments as you wish. A list of any glass to be consigned must be sent to the Auction Committee for approval before the glass is sent to us. Please send this list to: Lynn Welker, 2 East Main, New Concord, Ohio 43762.

For further consignment information and drop-off points, please refer to your October *Crystal Ball*. You must send your list of glass before leaving it with any of the members listed in *October Crystal Ball*. You may bring glass for consignment to the November Quarterly Meeting if you wish.

For any additional information: Phone 614-826-4418.

Witnessing the Cambridge Glass Color Book Photography Session

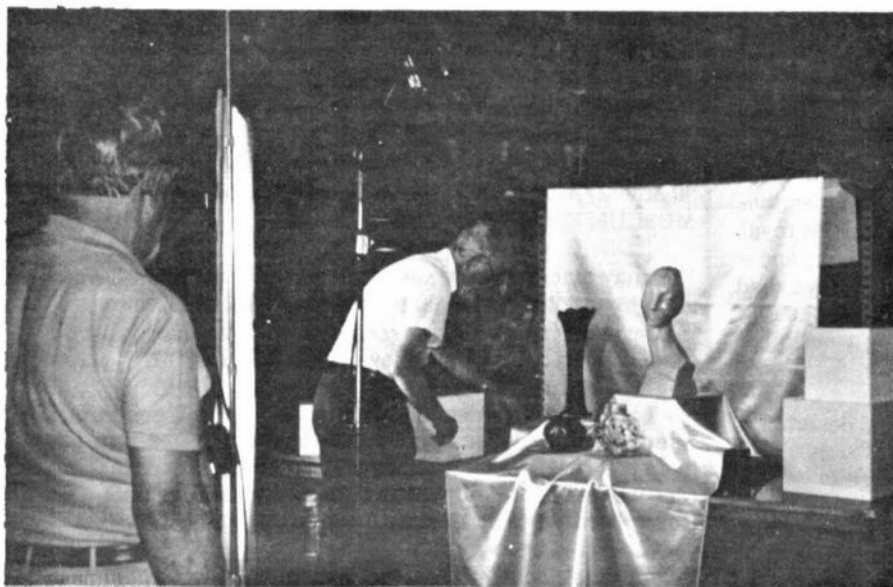
by Clara K. Brown



Joy McFadden, Sue and Dave Rankin unpacking glass.



Ray Brown in Cambridge Glass heaven and unable to buy the pieces he wants.



The photographers putting the finishing touches to a setup.

The Cambridge Glass Color Book has been photographed. The weekend of August 20th and 21st a group of Cambridge Glass lovers and two photographers accomplished the wondrous task.

My husband, Ray, and I arrived at the Best Western Motel in Springfield, Ohio, on Friday evening and talked to Bill Smith. He wanted our glass by 8 a.m. The next morning we delivered our glass and took off for a big Flea Market. We were back by 10 a.m. We then helped finish unpacking the glass. Words cannot begin to describe our first sight of the banquet room filled with beautiful Cambridge colored glass.

Dave and Sue Rankin had a prepared schedule organizing the glass in time periods and colors. Vicki and Frank Wollenhaupt, Joy McFadden and Bill Smith were busy setting up the first three displays to be photographed. Phyllis Smith was busy preparing an open house buffet supper for all of us at her home.

By 10:15 a.m. the first photograph was taken. After the first few shots, St. Louis, Missouri, natives, Don and Jane Rogers took the first set of negatives to the laboratory for development. When they returned, and the negatives were viewed, we were all pleased to see they were color perfect. So the photographing continued throughout the day.

As the day progressed, Sue and Joy identified etchings and recorded each piece of glass by writing its caption for the book. Bill, Vicki and Frank kept setting up glass displays. Dave kept the glass room organized, keeping the years and colors on schedule. We never got away from cleaning glass. Finger prints had to be removed, and silver encrusted pieces had to be polished. Ray and I helped Dave find glass for special pages, such as little things, nude stems, and color to be photographed next. We helped to carry out the photographed glass, carry in the next glass and decide on white or black background.

Saturday evening supper at the Smith's was delicious. We were joined by Debbie and Dennis Snyder and Lou and Dort Kilpatrick. Bill Smith had stated he had very little glass at home since most of it was being photographed or was on display in the MUSEUM. Nevertheless, we had a wonderful time wandering through their home looking at Cambridge Glass. After the buffet, Frank returned from the lab with the day's remaining negatives. We then had time to view them all and were so impressed by the quality. The photographers, Paul Cromer and Larry Ward were well chosen.

But now to tell you of the glass that had been gathered to be photographed. Imagine over 1,300 pieces of Cambridge colored glass in one room. Many tables were loaded with all the colors of the Cambridge Rainbow. Of course we had a Mannequin; she is such a classy lady. We had eight pieces of Japonica, several flying nude bowls, many nude stem pieces, a set of tall heatherbloom candlelabras, tall shapely vases, and covered turkeys. Have you seen an amber covered turkey? You will see one in the book. Pausing for a minute to look over the table of glass was a breathtaking view.

I am sure it was the greatest collection in the history of Cambridge Glass. It covered all the years of the Cambridge Glass Company in all the colors produced. The least expensive piece in the collection was probably my round carmen coaster. There were a few other pieces that would be valued under \$25. So you see why I believe we photographed a quarter million dollar collection for the book.



Vicki and Frank Wollenhaupt setting up the Japonica display.

In our many years of collecting, it was the most wonderful glass experience Ray and I have ever had. We will never forget that weekend. It would have been impossible to just walk through and really see all the glass. We had the honor of handling and really seeing all of it. We were the leg people for the other workers; but it was an extreme pleasure to be permitted to be the leg people.

This has been an enormous task. Most of us had no idea of the work involved in photographing so much glass. There is still much work to do before the material is ready for the printer. I am confident this team will have more help, and they will have the material ready in record time.

On Sunday the same pattern was followed, except the first three setups were ready for photographing by 7 a.m., and the day's shooting was finished by 6.30 p.m. More than 1,300 pieces were handled and photographed and not one piece was damaged! As the last photograph was taken it was evident that everyone's sense of humor was still intact.

Ray and I left Springfield by 7:05 p.m. Sunday. The rest of the group still had several hours of work to do, finding everyone's glass, getting it together, and packed. Frank had spent Friday traveling through the state of Ohio collecting members' glass; and he still had to spend Monday returning their glass to them.

I wonder if we will ever fully appreciate all the work this group has done for all of us in the name of National Cambridge Collectors, Inc. Ray and Clara Brown and all the Michigan Caprices say Thank You!



At the Smiths' — Joy McFadden, Sue and Dave Rankin, Ray Brown and Jane Rogers viewing the negatives from the first day's shooting.

EDITOR'S NOTE: According to the Color Book Committee, the photography session was just one phase in the preparation of the book. Identifications and references still have to be written and prices gathered for the Price Guide. Then the Printer needs four months to complete his work. With all this in view, setting a book release date is impossible, but the committee would like to have it by the 1983 Convention — not a promise — just an optimistic estimate.

LORNA

by Mark Nye

The plate etching Lorna was introduced by Cambridge in late 1930 and was first listed in the fall addition to the January 1930 Cambridge catalog. Hazel Weatherman shows an ad for Lorna in her book "Colored Glassware of the Depression 2" and indicates the ad dates from 1930 but gives no exact date nor source. The ad copy includes several references that this is a new etching.

In the fall addition to the catalog issued the previous January, only two pieces of the Lorna etching are shown. These appear on the last page of this 11 page supplement with eleven other assorted items under the title "Miscellaneous" and are the #1226 10" 2 handled plate, and #1225 9" 2 handled bowl.

Trade publications in early 1931 listed the Lorna pattern. Ads describing the pattern as new appeared in the February and March 1931 issues of "China, Glass and Lamps" and the February ad describes Lorna as "Irish Lace effect".

A Cambridge catalog supplement issued in early 1931 devoted two complete pages to Lorna with other scattered references. One of the pages shows the 3015 stemware, fingerbowl and plate plus the #935 64 oz. jug. The other complete page is headed "Decagon Dinnerware Plate Etched "748" Lorna" and illustrates ten examples of Lorna on Decagon blanks. Various items etched Lorna also appear in the 1932 and 1933 catalog additions. These include the 3400/38 beverage set, the 3400/27 beverage set, assorted vases, bowls and other occasional pieces. Two 3035 stems etched Lorna — the goblet and tall sherbet — are shown in the ad used by Hazel Weatherman.

The 1931 line of Ebony Silver Decorated Ware contained several items with the Lorna pattern, designated as Decorate D/973-S. Included in this group are such pieces as the #935 64 oz. jug, #1242 10" vase, #867 sugar and creamer and assorted bowls. The 1932 catalog addition devotes almost a complete page to Lorna with gold encrustation; the Cambridge designation being Decorate 996.

No additional pieces of Lorna appear in the 1934 catalog supplement. The 1940 Cambridge Glass Company catalog contained no reference to Lorna. Thus, it can be concluded the etching was discontinued sometime between 1934 and January 1, 1940.

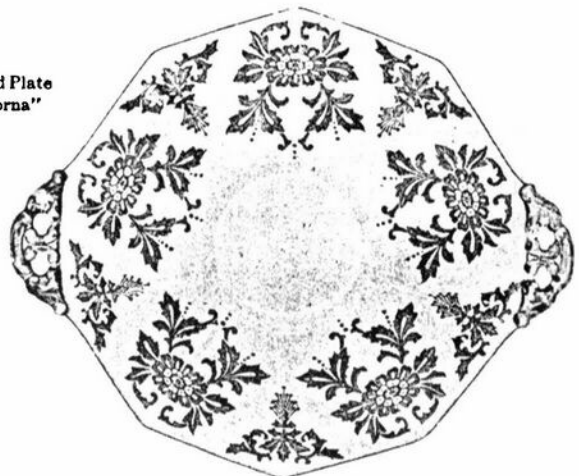
Lorna can be found in Gold Krystol, Amber, Emerald (light), Peach-Blo, Crystal and Heatherbloom. As is true with all of the etchings, Heatherbloom pieces are seldom seen. I have seen one piece of Heatherbloom Lorna and it was a keyhole vase. However, it is possible that luncheon or dinner sets were produced in Heatherbloom since they are known in Portia and Gloria. Other colors are possible, especially Willow Blue.

Since one sees few pieces of Lorna today, it would appear this etching did not achieve the popularity some of the other Cambridge etchings enjoyed even though an article in the September 1976 issue of the "Cambridge Crystal Ball" states Lorna "was available in complete lines including stemware, dinnerware, individual decorative pieces and novelty items". It is an attractive pattern and well worth the effort currently required to assemble a collection.



1225-9" 2-Handled Bowl
Plate Etched "Lorna"

1226-10" 2-Handled Plate
Plate Etched "Lorna"



LORNA ILLUSTRATIONS



1295-10"
E/Lorna



1233-9 1/4"
E/Lorna



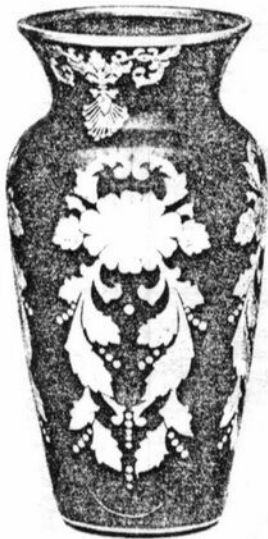
1298-13"
E/Lorna



1237-9"
E/Lorna



1303-7"
E/Lorna



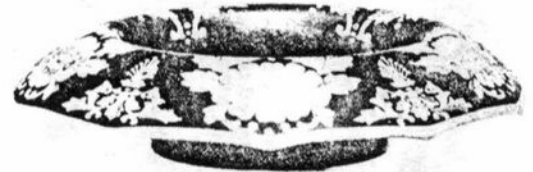
1242-10" Vase
D/973-S



3400/38-80 oz. Jug E/Lorna
3400/38-12 oz. Tumbler E/Lorna



3400/27-67 oz. Jug E/Lorna
3400/27-12 oz. Tumbler E/Lorna



856-11" R. E. Bowl
D/973-S



935-64 oz. Jug
D/973-S



984-10" 2-Hdl. Bowl
D/973-S



867 Sugar and Cream
D/973-S

Decagon Dinnerware Plate Etched "748" Lorna



885 Cup and Saucer



867 Sugar



867 Cream



1075 Cream Soup and Saucer



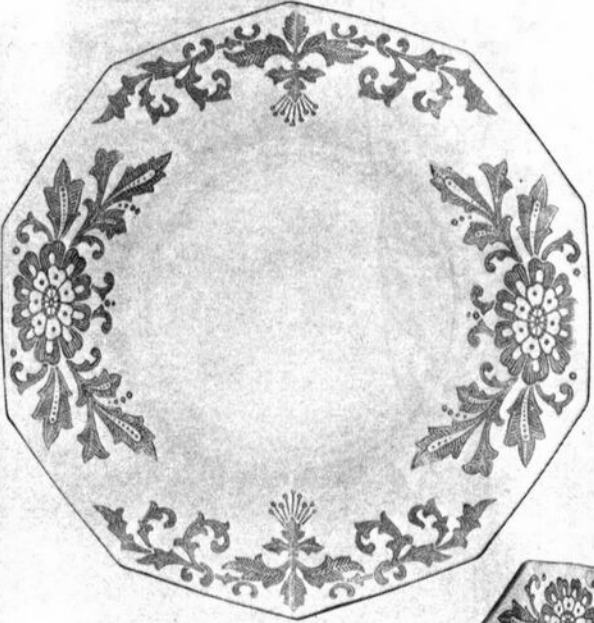
749-6 1/4" 2-Handled Bon Bon



1098-5 1/2" Fruit



969/698 Fruit Cocktail Set



697-8 3/8" Salad Plate



1087-9 1/2" Vegetable, Oval



1068-11" 2-Part Relish



3015 Stemware Plate Etched "748" Lorna

The Cambridge Glass Co.



Also furnished in Etchings 758-759-760 and Lorna



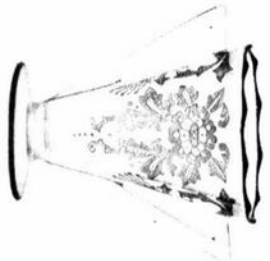
864 Candy Box and Cover



3400/102-5" Globe Jar



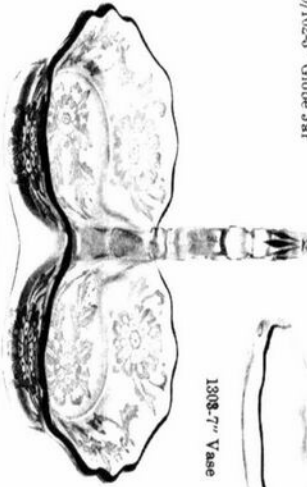
1076 Sugar



1076 Cream



3400/88-83 1/2" 2 Compart. Relish



1098-5" Hdl. Relish

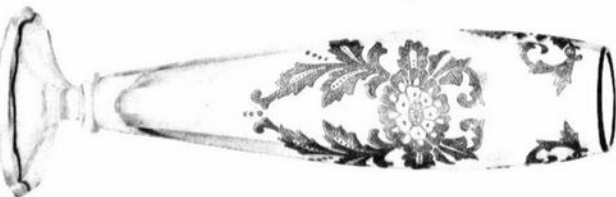
1308-7" Vase



3400/87-11" Celery



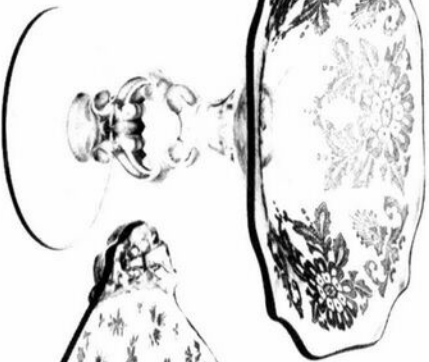
851 Ice Pail
Metal Handle



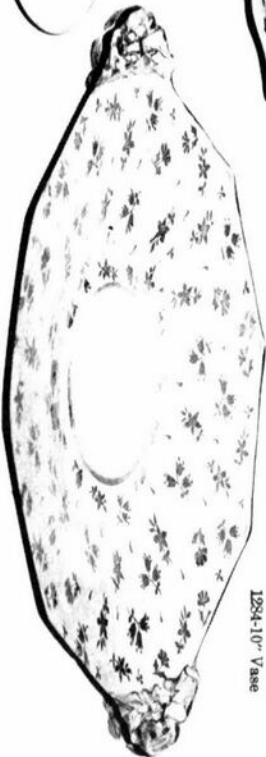
1284-10" Vase



1225-9" 2 Hdl. Bowl



3400/28-7" Compoart

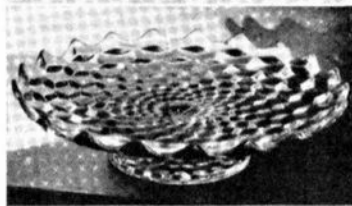
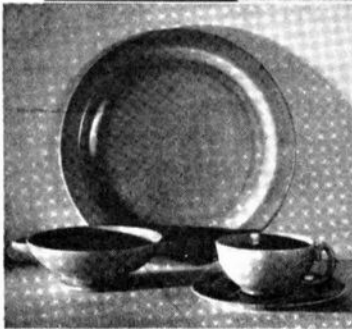


1226-10" 2 Hdl. Plate
D/997



Cambridge Glass was well represented on this page featuring Thanksgiving table settings — in the November, 1938 issue of American Home Magazine.

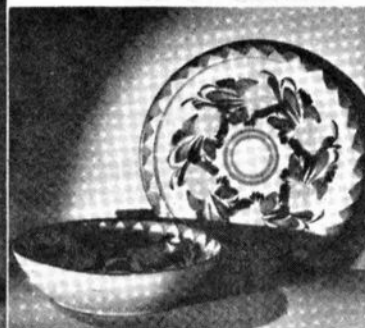
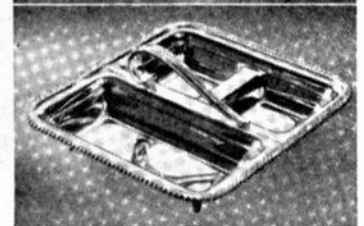
THE Thanksgiving Table:



Some of us like our turkey country style—peasant linens, English earthenware, and fresh fruits heaped in plain wooden bowls

WHEN we set this Thanksgiving table we thought of you who appreciate nature's rich autumn colors, her abundant yield of fresh fruits. English earthenware plates from B. Altman & Company, with a fruit and vegetable design in browns, yellow, and grape, were our first choice and set the color scheme. McCutcheon's deep golden yellow tablecloth made a glowing background for the centerpiece of fruits and walnuts. Cambridge water goblets from Altman's, and Gorham's beautifully simple Hunt Club pattern silver gave much dignity to our very simple setting.

Other suggestions for an informal table, beginning at the upper left and reading counter clockwise are Pacific Clay Products' dinner ware in cherry-red. Next you see one blown and one pressed glass goblet from Cambridge, Fostoria's famous Early American fruit platter, and some lovely silver from Towle. Fred Leighton's gay bowl and platter; goblets from Cataract Sharpe; Watson's silver in Meadow Rose pattern. From Pitcairn are two richly colorful Royal-Doulton plates; entree dish from Rogers; Mittdorfer Straus pottery turkeys are decorative in red and white.



All photographs by F. M. Demarest

SALT FORK ANTIQUES

71990 Old 21 Road
Kimbolton, Ohio 43749

FURNITURE

PRIMITIVES

GLASSWARE

COLLECTIBLES

Hours: Wed. Through Sun.
12:00-5:00

Located 10 mi. N. of Cambridge, OH off I-77 at Exit 54 -
then ½ mi. E. to Old 21.

439-4163

432-2020

STAGE COACH ANTIQUE MALL

(formerly White Pillars Antiques)
7525 East Pike
Norwich, OH 43767
614/872-3720

MANY DEALERS

PLENTY OF PARKING

WIDE SELECTION OF GLASS
AND POTTERY
FURNITURE AND
GENERAL LINE!

BUY ----- SELL ----- TRADE

OPEN YEAR ROUND
Weekdays - 10 AM - 5:30 PM
Sunday - 12 noon - 5:30 PM
Summer Evening Hours - by Chancel

Located 9 miles E. of Zanesville, OH, on I-70 to Norwich
Exit #164 - then 1/2 mile W. on Route 40.

CAPRICE SLIDE PROGRAM

The Florida Everglades Cambridge Study Group proudly announces the release of its slide program "Caprice." This program currently consists of 103 slides with written narrative, and shows 149 different pieces of the Cambridge Caprice Pattern.

Caprice was produced by Cambridge Glass Company starting in 1936 and not ending until the final plant closing in 1958.

All slides are in color with the majority of the items shown in crystal. Each slide has its own narrative and the program takes from 1 to 1½ hours to present. The slides are in two top loading Kodak carousels, evenly divided to allow for a break during the program if so desired.

The narrative for each slide gives pertinent information regarding the Caprice items being shown. This information includes production dates, colors and other information of interest.

The slide program with narrative is available for rental to any glass or collectible club. The fee is \$25, payable in advance, plus return shipping charges. All proceeds will be used to buy glass for the MUSEUM of Cambridge Glass owned and operated by the National Cambridge Collectors Inc., Cambridge, Ohio.

For more information, or to rent the program, write the Florida Everglades Study Group, 10045 SW 12th Terrace, Miami, FL 33174. It is recommended the program be reserved well in advance of the date you wish to show it since it promises to be a popular program.

— Classified —

FOR SALE: #647 two-lite candelabra with lustre cut prisms, etched Lorna, pair \$95.00. #3625 low sherbets, etched Chantilly, (4) at \$20.00 each, wines, same, (4) at \$35.00 each. NEED: Duncan Indian Tree stems. I buy and sell Cambridge, Heisey, Fostoria and others. Write wants or send your sale list. CRYSTAL MATTING SERVICE, Betty J. Maki, 1155 Willow St. #24, Faribault, MN 55021, (507) 334-4457. SASE please.

WANTED TO BUY: Carmen Nude Stem Items. Write to: SAWDEY'S ANTIQUES, 4349 Caroline Drive, Erie, PA 16509. Please include your phone number.

BUYING: Cambridge Rosepoint, Heisey Rose and Orchid, Fostoria etched dinnerware and Depression Glass. Also glass figures and unusual glass pieces. NADINE PANKOW, 207 S. Oakwood, Willow Springs, ILL. 60480. Phone: 312-839-5231

COLUMBUS, OHIO ANTIQUÉ FLEA MARKET

Ohio State Fairgrounds - Lausche Building
Off I-71 Exit 17th Avenue - Columbus, Ohio

NOVEMBER 21st

Sunday Only - 7 A.M. To 4 P.M.
Show Admission \$1.00 - Under 12 Free
150 QUALITY DEALERS

SELLING: Advertising Art Deco, books, Cambridge, clocks, coins, collectibles, Depression glass, dolls, Fiesta, fine early furniture, Heisey, jewelry, lamps, oak furniture, post cards, pottery, good primitives, tools and print shop items.

*Rain
or
Shine*

STOCKWELL PROMOTIONS
4214 North High Street
Columbus, Ohio 43214
(614) 267-8163/263-6830/885-252

*Rain
or
Shine*

NEXT SHOWS: Dec. 12th, Jan. 9th, Feb. 27th

PAT MANGINI

2429 Riverside Terrace
Manasquan, New Jersey 08736
PHONE: 201-528-5575

ROSEPOINT

No. 3121 low sherbets (5) \$21.00
No. 3900/41 sugar. 18.00
No. 647 pair double candlesticks 70.00

DECAGON ASSORTMENT

pink center handled servers (2) 18.00
pink fruit bowls (5) 8.00
8" luncheon plates (4) 6.00
creamer 10.00
amber creamer/sugar set 20.00
amber cup/saucer sets (2) 6.00
amber lightning bolt sugar 14.00
No. 3400 amber cup/saucer sets (5) 12.00
No. 3400 pink cup/saucer set 14.00
No. 3400 pink 8" plates (2) 8.00
No. 3400 pink saucer 5.00
No. 3400 pk. center hdl. server 22.00
decagon amber ice bucket 32.00

MISCELLANEOUS

No. 3060 12 oz. amber flat tumb. (6)
(gold dec. with No. 704 etch) 18.00
cobalt ivy ball keyhole base. 40.00
amber ivy ball same base 30.00
CAPRICE cry. cig. box/cov. 20.00
FARBER amber oil/vin./salt/pep. set
with tray and stoppers 40.00
WILDFLOWER etch pink No. 3400 tall comport
(lovely in color!) 45.00

Items priced each. All mint unless noted. Postage/insurance extra. Need serving pieces and cream soup/liner in pink No. 3400; Also any Diane etched on No. 3400 and stems.

Thank you.

SKYLINE DRIVE ANTIQUES

5432 Skyline Drive
Cambridge, Ohio 43725
(614) 432-2621

NUDES

Brandy, Mandarin Gold (5)	\$ 85.00
Brandy, Emerald Green (1)	85.00
Brandy, Amethyst (3)	85.00
Cocktail, Amethyst (1)	85.00
Cocktail, Emerald Green (1)	85.00
Cocktail, Amber (1)	85.00
Cocktail, Amethyst with Satin Stem (1)	105.00
Cocktail, Crystal (1)	70.00
Cocktail, Mandarin Gold with Crown Tuscan Stem	120.00
Cocktail, Carmen (5)	100.00
Claret, Emerald Green (2)	100.00
Table Goblet, Carmen (2)	125.00
Amber Comport (1)	125.00
Wine, Royal Blue (1) (Elbow Strained)	125.00
Tall Cocktail, Mandarin Gold (2)	110.00
Tall Cocktail, Pistachio (2)	110.00
Tall Cocktail, Dianthus Pink (2)	110.00

SWANS

3½" Carmen (1)	85.00
3½" Forest Green (1)	50.00
3½" Crown Tuscan (2)	35.00
3½" Emerald Green (3)	35.00
3½" Peach Blow (2)	45.00
4½" Emerald Green (2)	65.00
4½" Milkglass (1)	85.00
6½" Emerald Green (2)	95.00
6½" Mandarin Gold (1)	95.00
8½" Forest Green (1) (Chipped Foot)	100.00
8½" Crown Tuscan (1)	125.00
8½" Milkglass (1)	130.00
8½" Peach Blow (2)	120.00
8½" Emerald Green (2)	115.00

ROSEPOINT

Pressed Royal Blue Footed Tumbler (5)	100.00
Ice Bucket 3900 (1)	115.00
Cordial 3121 (12)	55.00
Tall Sherbet 3121 (6)	22.00
Low Sherbet 3121 (8)	20.00
Cocktail 3121 (6)	28.00
Footed Tumbler 3121 (2)	25.00
Low Sherbet 3500 (7)	22.00
Tall Sherbet 3500 (10)	25.00
Cocktail 3500 (6)	25.00
Ice Tea, 3500 (4)	30.00
Cruet	60.00
Heliotrope Rams Head Bowl & 2 - 8½" Doric Candlesticks	400.00
Rubina Honeycomb Comport	150.00
11" Rams Head Basket, Forest Green	260.00
1 pair Scotty Dog Bookends, Crystal	180.00
1 pair Scotty Dog Bookends, Satin Finish	200.00
1 Eagle Bookend	90.00
Milkglass Shell	70.00
Windsor Blue Footed Shell	150.00
1 pair Hurricane Lamps, Keyhole Stems, Wildflower Etch	180.00
Oval Rectory Bowl, 4 Footed, Wildflower Etch	60.00
Amber Everglade Bowl	80.00
1 pair Everglade Candlestick, crystal, Single Lite	45.00
Ivy Ball, Keyhole Stem, Royal Blue (2)	40.00
Ivy Ball, Keyhole Stem, Emerald Green	32.00
Ivy Ball, Keyhole Stem, Amethyst	32.00
3-part Candy Dish, Crown Tuscan with Charlton Finish (2)	75.00
8" 4 Ftd. Oval Bowl, Crown Tuscan with Gold Decoration	45.00
8½" Moonlight Blue Draped Lady	225.00
Buffalo Bowl, Moonlight Blue, Satin Finish	250.00

We Buy Crown Tuscan Nautilus & Molded Caprice, Crystal/Moonlight Blue

MINT CONDITION UNLESS STATED

PRICED EACH

POSTAGE & INSURANCE EXTRA

<p>HOUSE OF QUALITY ANITQUES and COLLECTABLES <i>Specializing in Glass</i> 128 E. Elm St. Don & Jane Rogers O'Fallon, MO Home 314-272-5854 1-327-8819</p>	<p>BROWN & BROWN APPRAISALS <i>Glass - China - Pottery</i> 1944 Sioux Place Kent, Ohio 44240 Flat Rates, N & E Ohio Only</p>	<p>CHARLES MIKULIK Box 416 Elizabeth, N.J. 07207 — COLLECTOR — Always paying good prices for CAMBRIDGE CAPRICE in all colors 201-372-1101 CARRY MOST TYPES OF ANTIQUES</p>
<p>EVELYN M. ALLEN 135 Cynthia Street Heath, Ohio 43055 Mail Order & Shows 614-522-1635 SPECIALIZING IN CAMBRIDGE GLASS!</p>	<p>BENICIA ANTIQUE SHOP 305 First Street Benicia, California 94510 OPEN 11 AM - 5 PM Closed Monday Z. E. LOPES 707-745-0978 VISIT HISTORIC BENICIA and its 28 shops Off Interstate #80 North of San Francisco</p>	<p>GLASS RAINBOW of California Glass of the Depression Era In Historic Folsom 813-F Sutter Street Folsom, California 95630 (Sacramento Area) Neil and Ervina McCartney Shop: (916) 985-2386 Res.: (916) 685-5485</p>
<p>DAVID NIELSEN 109 Lincolnway LaPorte, Indiana 219-326-7276 CAMBRIDGE - HEISEY - GENERAL LINE</p>	<p>ANDREJCAK'S ANTIQUES 14533 Bayes Ave. Lakewood, Ohio 44107 Joe & Karen Andrejcek 216-226-3417 SHOWS ONLY — CAMBRIDGE — FENTON — CHINA</p>	<p>A. SPRINGBORN 5434 Windridge Lane Orlando, Florida 32810 SHOP No. 34 — WEBSTER, FL Open Every Monday 305/298-3011</p>
<p>BERKELEY ANTIQUES 69 Berkeley St. Boston, MA 02116 George or Frank 617-426-1048 CAMBRIDGE, HEISEY, GENERAL LINE</p>	<p>THE HITCHING POST 7467 S. R. 88 Ravenna, OH 44266 Ph. 216-296-3686 D. McDaniel CAMBRIDGE — HEISEY — GENERAL LINE</p>	<p>FINDER'S KEEPER'S ANTIQUES P.O. Box 303 P.O. Box 16023 Dayton, O. Columbus, O. 45401 43216 513-254-2937 614-885-2726 SPECIALIZING IN CAMBRIDGE GLASS!</p>
<p>D & D ANTIQUES Columbus, Ohio DICK SLIFKO SHOWS ONLY</p>	<p>THE GLASS CUPBOARD 39 Shire Oaks Drive Pittsford, New York 14534 Marcia Ellis 716-586-7596 CAMBRIDGE ONLY INQUIRIES INVITED</p>	<p>SNYDER ANTIQUES P.O. Box 010 Gates Mills, Ohio 44040 SPECIALIZING IN CAMBRIDGE GLASS Mail Order, Shows 216-461-2110 By Appointment</p>
<p>YOU CAN ADVERTISE YOUR ANTIQUE SHOP HERE! 1 inch - \$6 for six months</p>	<p>J & L GLASS Laws Antique Center, Manassas, VA 22111 and 10629 Main St. Fairfax, VA 22030 703/273-8579 BUY & SELL: Depression, Cambridge, Heisey, Duncan & Fostoria Glass</p>	<p>1886 HOUSE East Schodack, N.Y. 12063 MAIL and SHOWS Laurie Cruise 518-477-5895 CAMBRIDGE - NORITAKE - AZALEA - D.G.</p>
<p>joyce's antiques Bought and Sold Specializing in HEISEY • CAMBRIDGE • VERLYS • AMERICAN GLASS P O Box 114, Albertson, N Y 11507 (516) 499-3396</p>	<p>YOU CAN ADVERTISE YOUR ANTIQUE SHOP HERE! 1 inch - \$6 for six months</p>	<p>BILL & SHARON PHILLIPS 21730 Priday Euclid, Ohio 44123 Ph. 216-261-4665 Shows Only BUYING GLASS, ANTIQUES, ETC.</p>
<p>CHARLES A. SHAW P.O. Box 147 Church St. New York, NY 10008-147 Phone (914) 476-8590 AMERICAN GLASS SHOWS & MAIL ORDER</p>	<p>AL STEELE Westerville, Ohio 614-882-6483 or 614-882-7124 Mail Orders and Shows Only HEISEY — CAMBRIDGE — PATTERN GLASS</p>	<p>SWISS HILLS COLLECTIBLES 303 Guilford Ave., Woodsfield, OH 43793 Mary & Wilbur Henderson 614 472-1133 SPECIALIZING IN CAMBRIDGE GLASS Shows, Mail & Stagecoach Antique Mall</p>
<p>MARGARET LANE ANTIQUES 2 E. Main St., New Concord, OH 43762 Lynn Welker 614/826-4418 CAMBRIDGE GLASS MATCHING SERVICE Hours Mon.-Fri. 1-5 PM or by Appointment</p>	<p>SHIRLEY S. LADOUCEUR Antiques and Collectibles Specializing in Cambridge Glass BY APPOINTMENT 7597 Daphne Drive 315-458-5297 No. Syracuse, NY 13212</p>	<p>GREEN ACRES FARM Antiques, Crystal Glass & Collectibles Sat. & Sun. 1-7 PM (614) 927-1882 2678 Hazelton Etna Road (State Route 310 North) Pataskala, Ohio 43062</p>



National Cambridge Collectors, Inc.

P. O. Box 416, Cambridge, Ohio 43725

A nonprofit organization dedicated to the preservation and study of Cambridge Glass

You Are Cordially Invited
To Become A Member Of The

NATIONAL CAMBRIDGE COLLECTORS, INC.

Benefits derived from membership include: receipt of our club publication, The Cambridge CRYSTAL BALL; informative Quarterly Meetings; Antique Shows; Auctions; and other special events.

The Cambridge CRYSTAL BALL is published the first of each month. This newsletter contains educational and interesting articles, questions and answers, information on reproductions and reissues, notices of all club functions, classified advertisements, dealers directory, and many other features of interest to collectors of Cambridge Glass.

Yearly dues are \$13.00 for Individual Members and \$3.00 for each Associate Member. All members have voting rights, but only one issue of the CRYSTAL BALL will be mailed per household.

Name (please print) _____ \$13.00

Mailing Address _____

City _____ State _____ Zip _____

Associate Members (Must be at least 12 years of age and living in the same household)

1. Name _____

2. Name _____

3. Name _____

Total number of Associate Members _____ @ \$3.00 each \$ _____

TOTAL AMOUNT ENCLOSED \$ _____

Please make check payable to: NATIONAL CAMBRIDGE COLLECTORS, INC.

Recommended by _____

USE THIS APPLICATION - NCC MEMBERSHIP MAKES A "GREAT GIFT"!

VISIT YOUR MUSEUM of CAMBRIDGE GLASS

HOURS:

Tuesdays thru Fridays - 1:00 to 4:00 P.M.
Saturdays and Sundays - 10:00 to 5:00 P.M.
Closed December and January

Museum Telephone Number - 614-432-4245



**OBTAINED A
NEW MEMBER?**

National Cambridge Collectors, Inc.
P. O. Box 416
Cambridge, Ohio 43725



FIRST CLASS MAIL