

Cambridge

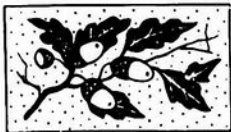


Crystal Ball

ISSUE NO. 113

SEPTEMBER 1982

Published monthly by the NATIONAL CAMBRIDGE COLLECTORS, Inc.
To encourage and to report the discovery of the elegant and boundless product
of the Cambridge Glass Company, Cambridge, Ohio



THOUGHTS from your President . . .

Are all of you finding that Cambridge Glass doesn't grow on trees anymore? With the amount of glass that the Cambridge Glass Co. made, you would think you should still be able to find loads of it everywhere. Not so! The very good pieces are almost non-existent right now, and even the more common pieces that you could pick up by the sackful a few years ago are more difficult to find. When you do find more common pieces it seems the sellers want very rare prices for them. This all leads me to believe there are a heck of a lot more people collecting Cambridge Glass than our membership shows. Don't lose heart though. That Cambridge Glass is out there somewhere and will surface sooner or later. I have heard several people discussing the probable availability of Cambridge Glass, and other glass for that matter, due to the recession which has hit the Tri-State area rather hard. It seems that many people thought anyone out of work would be selling their collectables, such as glass, so they would have extra money to live on. Well this hasn't happened to any extent as yet, and knowing how collectors feel about their glass, I would say it will be the last thing they give up before starvation.

Business has been picking up at the MUSEUM recently and we hope it will continue to increase. We are working on more publicity so that everyone who is the least bit interested in glass or Museums will know about ours. I surely do wish that everyone who is a member of NCC could come and visit the MUSEUM. You have all been so patient through the years

waiting for a MUSEUM. It is sad that you members who are scattered all over the country don't have the same opportunity that we who live here have to enjoy the MUSEUM. It will be here for a long time, however; and hopefully every one of you sooner or later will have the opportunity to visit and enjoy it. In the meantime, we will try to take both exterior and interior pictures of the MUSEUM and publish them in the *Crystal Ball* so you will at least have some feeling of what it's like.

By the way, whether you like it or not, I will be writing these articles for another year.

Willard

NOTICE DUES INCREASE

Effective September 1st, 1982
New Memberships and Renewals

Master Membership - \$13⁰⁰ per year
Additional Members - \$3⁰⁰ each per year

(12 years of age or older, and residing in same household)

All members have voting rights.
Only one *Crystal Ball* per household.

MEMBERSHIP RENEWAL NOTICE

If the date on your
address label is - -

9-82

This is your LAST ISSUE of the CRYSTAL BALL.
Please renew NOW!

CAMBRIDGE CRYSTAL BALL

Official publication of National Cambridge Collectors, Inc., a non-profit corporation with tax exempt status. Published once a month for the benefit of its members.

Membership is available for individual members at \$13 per year and additional members (12 years of age and residing in the same household) at \$3 each. All members have voting rights, but only one *Crystal Ball* will be mailed per household.

Back issues of the *Crystal Ball* are available (beginning with Issue No. 1, May 1973) for members only. Cost: \$.60 each or 12 issues for \$7.

1982-83 OFFICERS & COMMITTEE CHAIRPERSONS

PRESIDENT Willard Kolb
 VICE-PRESIDENT Josephine Barstow
 SECRETARY Janice Hughes
 TREASURER William Smith
 SERGEANT-AT-ARMS Don Armbrrecht

BOOK SALES Meg Turner
 BUDGET & FINANCE David Rankin
 BY-LAWS David Rankin
 CONVENTION Josephine Barstow
 MEMBERSHIP Phyllis Smith
 MUSEUM Billy Harbaugh
 PROGRAM & ENTERTAINMENT Frank Wollenhaupt
 PROJECT Willard Kolb
 PUBLIC RELATIONS William Smith
 PUBLICITY Joseph Andrejcak
 STUDY GROUP ADVISORY Jack Rettig

CRYSTAL BALL EDITOR Peg Gotschall

CLASSIFIED ADVERTISING RATES

5c per word \$1.00 minimum
 We cannot mix type size in classified advertisements. Abbreviations and initials will count as words. Payment in full MUST accompany all ads.

DISPLAY ADVERTISING RATES

	Members	Non-Members
1/8 page	\$ 4.00	\$ 6.00
1/4 page	7.00	10.00
1/2 page	12.00	18.00
3/4 page	17.00	25.00
Full page	22.00	33.00

DEALERS DIRECTORY

1" ad (5 line maximum) \$6.00 for 6 months

Cambridge Crystal Ball assumes no responsibility for items advertised and will not be responsible for error in price, description or other information.

Advertising copy must be in our hands by the 10th of each month to assure publication in our next issue. Advertisements containing reproductions will not knowingly be accepted unless clearly stated.

PLEASE ADDRESS ALL CORRESPONDENCE TO

Cambridge Crystal Ball
 National Cambridge Collectors, Inc.
 P.O. Box 416
 Cambridge, Ohio 43725

Janice Hughes, Secretary Phone 614-432-7823

Willard Kolb, President Phone 614-695-0695

PLEASE NOTIFY US IMMEDIATELY OF ANY CHANGE IN YOUR ADDRESS!

Please enclose a self-addressed stamped envelope when requesting information!!

CAPRICE SLIDE PROGRAM

The Florida Everglades Cambridge Study Group proudly announces the release of its slide program "Caprice." This program currently consists of 103 slides with written narrative, and shows 149 different pieces of the Cambridge Caprice Pattern.

Caprice was produced by Cambridge Glass Company starting in 1936 and not ending until the final plant closing in 1958.

All slides are in color with the majority of the items shown in crystal. Each slide has its own narrative and the program takes from 1 to 1 1/2 hours to present. The slides are in two top loading Kodak carousels, evenly divided to allow for a break during the program if so desired.

The narrative for each slide gives pertinent information regarding the Caprice items being shown. This information includes productions dates, colors and other information of interest.

The slide program with narrative is available for rental to any glass or collectible club. The fee is \$25, payable in advance, plus return shipping charges. All proceeds will be used to buy glass for the MUSEUM of Cambridge Glass owned and operated by the National Cambridge Collectors Inc., Cambridge, Ohio.

For more information, or to rent the program, write the Florida Everglades Study Group, 10045 SW 12th Terrace, Miami, FL 33174. It is recommended the program be reserved well in advance of the date you wish to show it since it promises to be a popular program.

WE GET LETTERS

In May's issue of the *Crystal Ball* Paul Miller was wondering how many collectors found patent numbers on their flower frogs. I have three of them and one has the number.

Anicita Zamborsky, Pittsburgh, PA

I have enjoyed the *Crystal Ball* so very much. It is so helpful in my collection of the beautiful Cambridge Glassware. It has so much helpful information. Please express my appreciation to all.

Sincerely, Marian Orye, a faithful reader,
 Alexandria, VA

NCC Board Members and Officers for 1982-83 remain the same as last year. Officers are listed on page 2 in every issue of the *Crystal Ball*.

Board Members are as follows:

Joseph Andrejcak, Lakewood, OH
 Don Armbrrecht, Avon Lake, OH
 Josephine Barstow, Cambridge, OH
 Billy Harbaugh, Senecaville, OH
 Janice Hughes, Cambridge, OH
 Willard Kolb, St. Clairsville, OH
 Ruby Landman, Ashland, OH
 Joy McFadden, Columbus, OH
 David Rankin, Englewood, OH
 Bill Smith, Springfield, OH
 Lynn Welker, New Concord, OH
 Frank Wollenhaupt, Dayton, OH

In behalf of the NCC membership, we extend our thanks to these people for their service and help during the 1981-82 term, and wish them well as they assume their responsibilities for 1982-83.

Study Club News

STUDY GROUP No. 6 - NEW YORK STATE "THE FINGERLAKES"

At our May meeting, it was agreed that we would hold a brief meeting at the Convention in June. All members were in attendance, and it was great fun to watch our newest member, Sandy O'Donnell, at her first Cambridge Glass Convention. She truly thought she had died and gone to Cambridge Heaven! Husband John held up rather well, we all thought, since we have not yet convinced him that this is the greatest hobby ever. Plans were firmed up for our next meeting in Pittsford, and Sandy did the Show and Tell with her lovely purchases. The rest of us were busy tending the store! We all agreed, however, that the Conventions continue to expand and to be more interesting each year. The highlight this year was the opening of our MUSEUM and just so many thanks to all who accomplished this major project.

submitted by Marcia Ellis

On July 18th, the members of the Fingerlakes Study Club travelled to Rochester for their meeting at the home of Bob & Marcia Ellis. All were greeted at the door by the sound of fans and air conditioners running at full tilt! We were pleased to have a guest with us at this meeting, and she is Janice D'Amato of Rochester, N.Y. Her interest at this point is Rosepoint, but we saw her eyes keep lighting up every time she looked in the direction of the nude stems!! Amazing how quickly our interests have a way of expanding with Cambridge Glass! We continued our program of our previous meeting on salts and peppers. Four of us had been on buying trips, and the Show and Tell got pretty exciting, especially over a crystal swan punch bowl and cups and 8 Rosepoint after dinner cups and saucers. Following our meeting we adjourned to the backyard for an old fashioned picnic. Our next meeting is to be held on Sept. 22nd at the home of Don & Shirley Lacoureur in Syracuse. Our program will be on Cambridge arms, and we will be making out our next year's schedule for topics and location of meetings.

submitted Marcia Ellis

STUDY GROUP No. 7 - EASTERN OHIO "THE CAMBRIDGE BUFFS"

The Cambridge Buffs Study Group met July 25th at the home of Charles and Mary Alice Upton. There were 13 members and 4 guests present for a picnic supper. Our hosts treated us to delicious charcoal grilled steaks.

Charles had prepared a game for our program. He had placed 12 Cambridge Glass items in individual bags and we were to identify each item by name, color, number, etc., just by feeling them. Karen Jones won by identifying most items.

The remainder of the evening was spent viewing the Uptons' extensive and beautiful collection of Cambridge Glass and on Show and Tell. Some items for Show and Tell were: a #2693 Near Cut comport, a La Flo Princess Grace bowl with flower frog, a Rosepoint 13" oval bowl, a Lexington celery dish, a #3139 stem Virginian goblet and a Virginian nut dish, a signed 3 3/4" crystal flower frog, a Fernland celery vase, an Achilles cordial, an amber cream and sugar.

Our next meeting will be August 18th at the home of Jim and Shirley Douglas.

submitted by Deanne Gray

STUDY GROUP No. 5 - SOUTHERN CALIFORNIA "CALIFORNIA CAMBRIDGE COLLECTORS"

The July meeting of the California Cambridge Collectors was held at Beverly Hanson's home.

Old business consisted of agreeing on our meeting dates and locations for the remainder of the year. The August meeting will be at Mary Bjorklund's; September, Herb and Betty Wanser; October, Carlene Mathers; and November, Ron Rockafellow's.

Our president, Bill Losch, read a letter from Willard Kolb thanking the club for our donation of \$400 to the MUSEUM Fund. Bill also passed around pictures of the MUSEUM that Willard had sent. We were impressed with the wonderful job the NCC members did on the MUSEUM.

We studied epergnes at this meeting and several members brought items from their collection. Beverly gave a very interesting discussion on the various styles on display.

Bill Losch is on a winning streak again. He won an amber Caprice vase.

Show and Tell items were as follows:

Betty Wanser — Crystal Everglades candleholders, 3121 crystal candlestick and a P-728 5 piece ashtray set that Betty picked up at a yard sale for 25 cents!

Ron Rockafellow — A handpainted crown tuscan ashtray, Rosepoint center handled sandwich tray and an 11" bashful Charlotte.

Betty Losch — Rosepoint 3500 honey dish with cover, ritz blue dresser box, moonlight blue 1455 and 1456 cigarette holder and ashtrays.

Beverly Hanson — Peachblo Optic pinch bottle and six glasses.

Carlene Mathers — A pink Caprice vase.

Joan McDowell — Peachblo 1238 vase and an amber dresser box.

We then enjoyed some delicious food that Beverly prepared along with some fresh pineapple that she just brought back from her vacation in Hawaii.

submitted by Joan McDowell

STUDY GROUP No. 10 - LONG ISLAND, NY "THE TUSCAN CROWNS"

Seven members of the Tuscan Crowns Study Group met July 8th at the home of Rita Berg, East Patchogue, Long Island.

We examined the patterns of pages 1 through 50 of Book I in great detail, noting pattern similarities in #739 & #732. We discussed Apple Blossom, Cleo, Decagon and Round, and we were able to examine many examples of most of these patterns. Our next meeting on the 2nd Thursday in August will concern only swans and flowers figurals.

submitted by Barbara Siemsen

NEW PRICE GUIDE AVAILABLE

The 1982 Price Guide to the NCC 1930-34 Catalog Reprint is now available, and orders are being taken for it. Price is \$2.00 plus 25¢ postage and it can be ordered through the NCC address.

1982 CONVENTION DISPLAY ROOM

by Lynn Welker



This year's Display Room was like walking through a forest in spring with fresh shades of green everywhere. Large displays of cool Light Emerald and refreshing Forest Green were interspersed with selected pieces of Topaz, Emerald Green, Jade, Pomona Green, and Pistachio. There was something for all collectors of Cambridge Glass and an absolute array of pieces for those especially interested in green. Here are some of the most choice pieces that could be seen.

For the collector of nudes, there were cocktails and brandies in Forest Green, Pistachio, Emerald, and an unusual mint green that may have been an offshoot of Forest Green. The Forest Green display also held a Nude ivy ball, comport, candlesticks, and the rare Flying Lady bowl. Among the rarer Nudes displayed were an all Emerald shell comport, Pistachio crackle goblet and a roemer, wine, and cocktail in the rare Topaz color.

For the swan enthusiast, a complete set of swans in all known sizes was shown in Light Emerald as well as the three sizes known in Emerald Green and the rare 8½" Forest Green swan.



If Flower figures is your forte, the grouping at the display was beautiful with all known figures in Light Emerald: 8½" Draped Lady with round and oval bases, 13½" draped lady, 6½" Bashful Charlotte, 11½" Bashful Charlotte, Two Kid, Mandolin Lady, Rose Lady with short and tall bases, Bird on a stump, and the rare Melon Boy. Most were also shown in satin finishes as well.

For those interested in figurals in general, these pieces were a delight to the eyes: both styles of Frog vases in Forest Green, the large and small Buddha lamps in Light Emerald as well as the small Buddha lamp in Topaz with two different styles of fittings. Beautiful Dolphin candlesticks in Light Emerald with the rare Sponged Acid treatment graced the shelves. An extremely rare Geisha figurine in Jade centered a table of Jade and Topaz, both hard colors to find.

The collector of Nearcut would have been delighted to see beautiful examples of green Nearcut which included the Inverted Thistle pattern in a water set, table set, and large bowl all done in gold. Rare examples of green Nearcut carnival included a Feather cracker jar and Inverted Strawberry spittoon.

One corner featured Pomona Green, one of the rarest of the opaque Cambridge colors. Among the most unusual items in this color were a cup and saucer, humidior, desk set, water set, covered candy with gold encrusted daisies, and a gold encrusted Hunt Scene goblet. One might note that these pieces would be rare in any opaque color but especially in Pomona Green.



The Jade display held some interesting surprises of seldom seen pieces such as the Ram's Head console set, stemmed wine glasses, and the perfume lamp with a black enamel encrusted Dragon.

One side of the Display Room was almost entirely Forest Green. These pieces looked cool as a cucumber but not as easily found were: a Mt. Vernon whiskey set, large ring stemmed vase with Minerva etching, a Martha Washington covered pretzel jar, the largest Cambridge hat in Tally-Ho, and a rare #3400 cordial decanter gold encrusted Bordeaux.

The other side of the Display Room carried an array of items in Light Emerald. Among these were many items with etching which included: Betty, Apple Blossom, Gloria, Hunt Scene, Catawba, Marjorie, Golf Scene, Willow, Cleo, and Dragon. Many of these etchings are seldom seen on this color but the shapes that they were etched on included equally rare ones: the covered Temple jar, footed Goldfish bowl, desk set pieces, and the meat platter with gravy boat.

Many people are to be thanked for this lovely display and for graciously loaning their glass. The Display Room Committee is to be commended for their hard work. This group included Janice Hughes, Jo Barstow, Joy McFadden, Vicki Wollenhaupt, and Mr. and Mrs. Dean Westfall. Willard Kolb and Bill Harbaugh ably handled setting up risers and tearing down and transporting materials from storage. Clara Brown's beautiful arrangements added a festive touch to the Display Room and we thank you, Clara, for bringing them such a distance. Everyone who manned the Display room while it was open also deserves a round of applause.



Period silver and china
for brides

For the Early American home—sterling silver: left to right, Cotillion, Reed & Barton's Colonial pattern; Plymouth, an authentic design from Gorham; and Cascade, Towle's pattern. China: pink and blue flower sprays in a Spode pattern, from Copeland & Thompson; gold dots and a June rose on the Martha Washington design, from Rosenthal; blue and white Duchess plate from Wm. S. Pitcairn. Glass: Colonial patterns from Duncan & Miller, Cambridge, and Fostoria, respectively

THE AMERICAN HOME, JUNE, 1938

3400 LINE

ADDITIONAL ITEMS IDENTIFIED

by Mark Nye

The September 1981 issue of the "Cambridge Crystal Ball" contained a listing of the 3400 line I had compiled from several sources. Recently I was able to locate a reference for five additional items. This reference is the June 1941 Supplement to the January 1, 1940 Cambridge Catalog. The items are:

400/201	7" bonbon, shallow, crimped
3400/202	6½" bonbon, oblong, crimped
3400/203	6" bonbon, deep, crimped
3400/204	3½" bonbon, deep, cupped
3400/205	6" bonbon, shallow, cupped

Using the same group of references used for the original listing, I have compiled a list of colors that were used for the 3400 line as well as a list of etching to be found on 3400 blanks. Neither list should be considered as being definitive. These colors and etchings can be documented but I hesitate to say that other colors or etchings were not used. It is conceivable that any color or etching used after 1930 might have been utilized with the 3400 line.

Known colors are:

Amber	Forest Green
Amethyst	Gold Krystal
Carmen	Heatherbloom
Crown Tuscan	Mandarin Gold
Crystal	Milk Glass
Dianthus Pink	Moonlight Blue
Emerald (light)	Peach Blo
Emerald (dark)	Royal Blue
Ebony	Willow Blue

Known etchings are:

Apple Blossom	Wildflower
Cleo	Roselyn
Gloria	Daffodil
Lorna	Candlelight
Diane	No. 758
Portia	No. 759
Rose Point	No. 760
Elaine	

It must be remembered however, that in the case of the late etchings and colors, only limited use of the 3400 line was made. The 1949 catalog shows relatively few pieces of the 3400 line when compared to the extensive list of items that make up the complete line.

I would appreciate hearing from anyone who can offer additional information regarding 3400 line items, colors or etchings used in conjunction with the line, or any information of interest regarding this large and obviously popular Cambridge line. All information received will be shared thru the Cambridge Crystal Ball.

**SILVER ON EBONY WARE -
DECORATE D/971-S -
GLORIA**



646-5" Candlestick
D/971-S



3400/5-12" Bowl
D/971-S



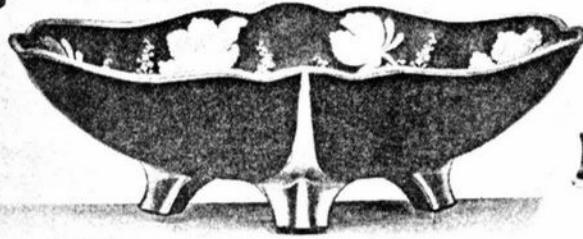
646-5" Candlestick
D/971-S



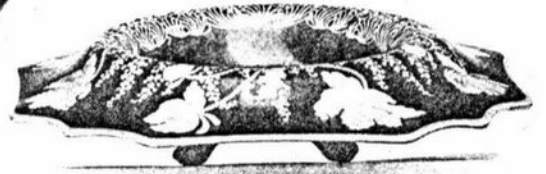
3400/38-80 oz. Jug Shaped Jug
D/971-S



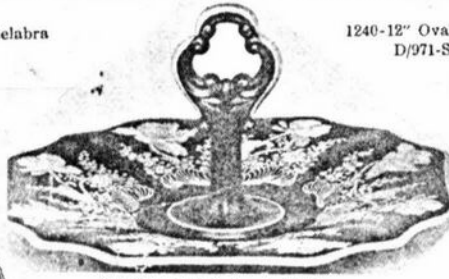
638 3-Holder Candelabra
D/971-S



1240-12" Oval Bowl
D/971-S



3400/5-12" 4-toed Bowl, F. R. E.
D/971-S



3400/10-11" Hdl. Sandwich Tray
D/971-S



3400/10-10" Handled Sandwich Tray
D/971-S



1090-7" Comport
D/971-S



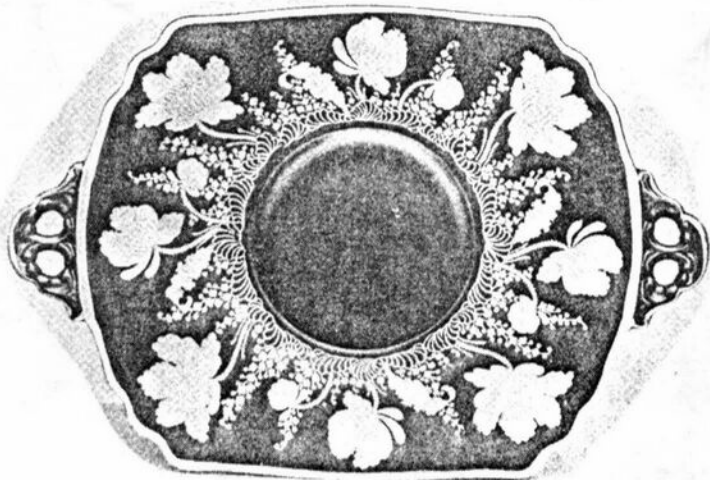
851 Ice Pail
Chrom. Plated Hdl.
D/971-S



3400/1185-10" 2-Hdl. Bowl
D/971-S



3400/14-7" Tall Comport
D/971-S



1186-12½" 2-Hdl. Plate
D/971-S



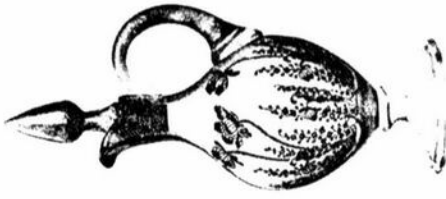
274-10"
Bud Vase
D/971-S



779-14" Vase
D/971-S

Continuation of Gloria Etching #746.
Please refer to page 5 of July 1962 CRYSTAL BALL.

3400 LINE ETCHED
#746 GLORIA



3400/79 Tall Oil
G. S.



3400/28-7" Low Compot



3400/29-7" Tall Compot



3400/40 Sugar Shaker
with Glass Top



3400/30-9½" 2-Hdl. Footed Bowl



3400/39 Tall Cream
or Syrup



3400/50 Square 4-Toed Cup and Saucer



3025 Fingerbowl



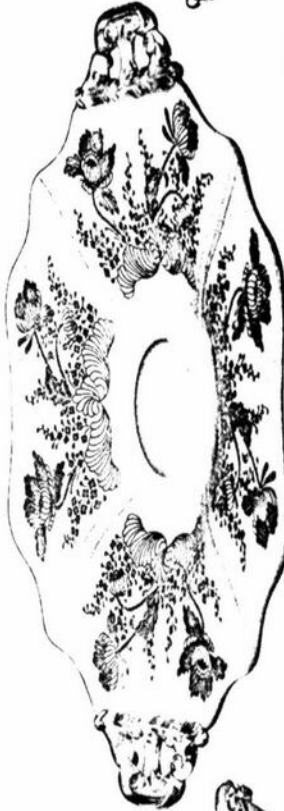
3400/100-14 oz.
Tumbler E/Gloria



3400/34-9½" 2-Hdl. Bowl



3400/74-5" Compot



3400/35-11" 2-Hdl. Plate



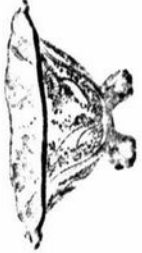
3400/76 Shaker
Glass Top



3400/77 Shaker
Glass Top



3400/88-8¾" 2-Hdl. 2-Compt. Relish



3400/70-3½" Cranberry



3400/71-3" Ind. Not



3400/85-8¾" 2-Hdl. Pickle

**3400 LINE ETCHED
#746 GLORIA**



3400/26-5½" Ftd. Bon Bon



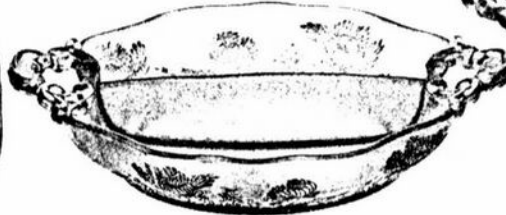
3400/25-5" Ftd. Bon Bon



3400/1179-5¼" Bon Bon



3400/1182-6" Basket



3400/90-8" 2 Handled Relish



3400/1180-5¼" Bon Bon



3400/1181-6" Plate



3400/85 Square Cream Soup
and Saucer



3400/81-5" Square Fruit Saucer



3400/75 Square Cup and Saucer



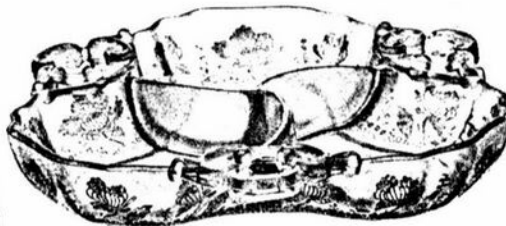
3400/82-6" Square Cereal



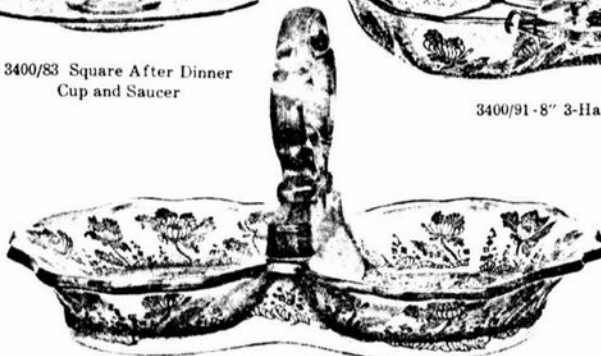
3400/13-6" Comport



3400/83 Square After Dinner
Cup and Saucer



3400/91-8" 3-Handled Relish



3400/1093 Relish Tray

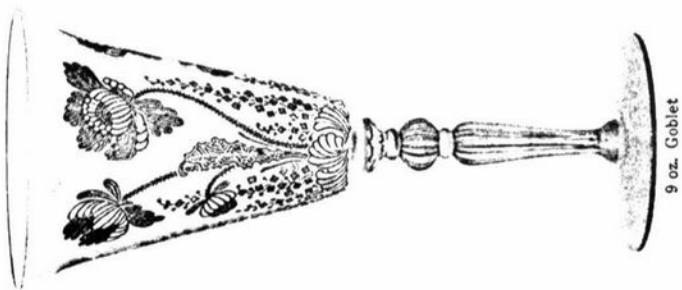


3400/862 Relish Tray

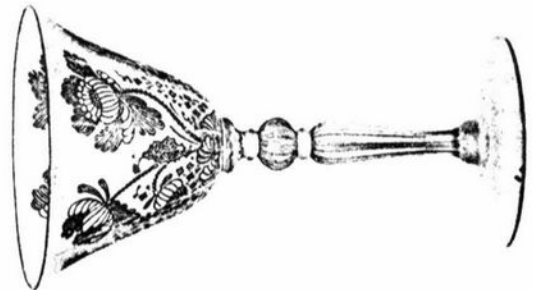
3035 Stemware Plate Etched "746" Gloria

3035 LINE ETCHED
#746 GLORIA

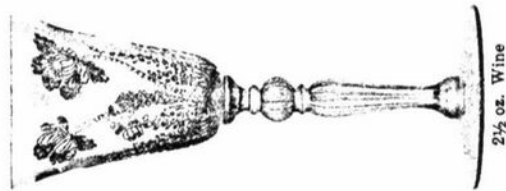
The Cambridge Glass Co.



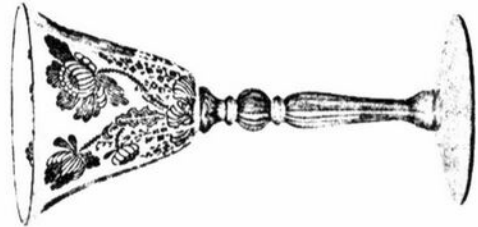
9 oz. Goblet



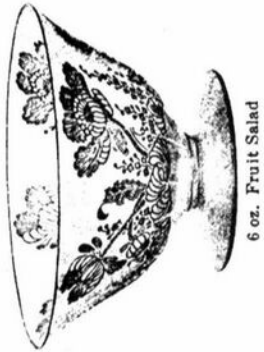
6 oz. Tall Sherbet



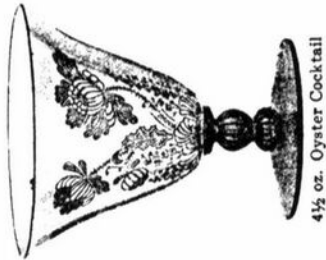
2½ oz. Wine



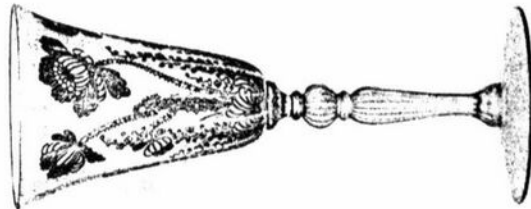
3 oz. Cocktail



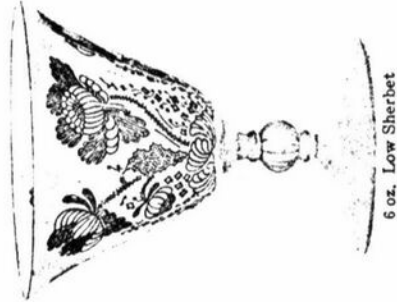
6 oz. Fruit Salad



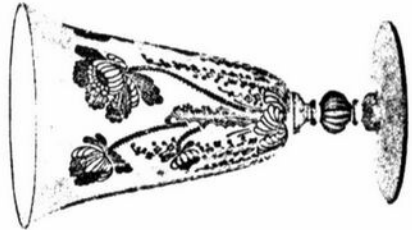
4½ oz. Oyster Cocktail



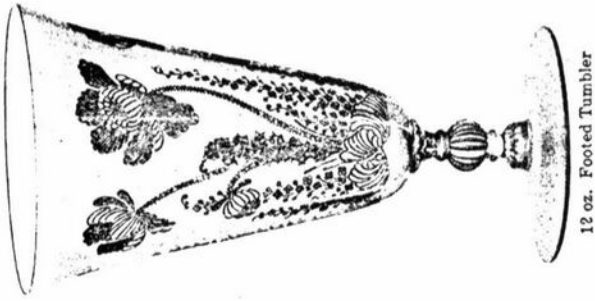
4½ oz. Claret



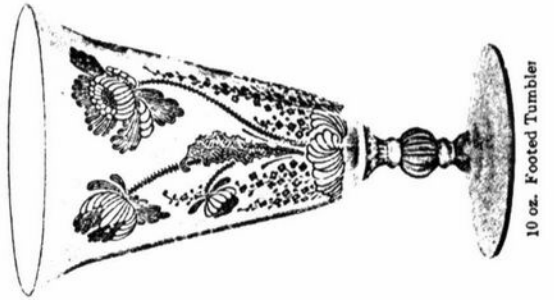
6 oz. Low Sherbet



5 oz. Footed Tumbler



12 oz. Footed Tumbler



10 oz. Footed Tumbler



"CAMBRIDGE ARMS"

Smart Table Appointments

(Patent Nos. 154701 and 154796) *Retail*

		Price Per Doz.	Price Each
1563	4 Candle Arm	\$42.00	\$3.50
1562	3 Vase Arm	42.00	3.50
1536	Peg Nappy	15.00	1.25
1537	5 in. Peg Nappy w/Candlewell.....	15.00	1.25
1538	6 in. Peg Nappy w/Candlewell.....	24.00	2.00
1633	5 in. Peg Vase	15.00	1.25
1634	7 in. Peg Vase	21.00	1.75
2355	7 in. Epergne Vase	15.00	1.25
628	Candlestick	16.80	1.40
19	Bobèche (for 8 prisms)	24.00	2.00
19/1	Bobèche and 8 prisms	48.00	4.00
30	Bobèche (for 6 prisms)	24.00	2.00
30/1	Bobèche and 6 prisms	42.00	3.50
1	3 inch prism	3.60	.30
P.510	Ball Candlestick	24.00	2.00
653	9 in. Candlestick	51.00	4.25
1596	6½ inch Candlestick	27.00	2.25
P.431	13 inch Bowl	66.00	5.50
1138	8½ inch Sea Gull Flower Holder..	54.00	4.50
1636	4½ in. Bird Figure	27.00	2.25
1606	6 in. Hurricane Lamp Chimney....	18.00	1.50
P.436	13 in. Bowl w/well	75.00	6.25

UNITS

5	1-628 Candlestick	\$ 1.40	
	1-1563 4 Candle Arm	3.50	
	1-1562 3 Vase Arm	3.50	
	3-2355 7 in. Vases	3.75	
		<u>\$12.15</u>	\$11.88 each

16	1-628 Candlestick	1.40	
	2-1563 4 Candle Arms	7.00	
	3-19 Bobèches	6.00	
	24-#1 3 in. Prisms	6.00	
	3-1633 Peg Vases	3.75	
		<u>\$24.15</u>	\$24.00 each

37	1-1563 4 Candle Arm	3.50	
	1-628 Candlestick	1.40	
	1-1633 Peg Vase	1.25	
		<u>\$ 6.15</u>	\$ 6.00 each

39	1-1563 4 Candle Arm	\$ 3.50	
	1-1536 Peg Nappy	1.25	
		<u>\$ 4.75</u>	\$ 4.75 each

8 PIECE UNIT

40	2-1563 4 Candle Arms	\$ 7.00	
	4-1536 Peg Nappies	5.00	
	1-628 Candlestick	1.40	
	1-1633 Peg Vase	1.25	
		<u>\$14.65</u>	\$14.50 each

11 PIECE UNIT

43	2-628 Candlesticks	2.80	
	2-1563 4 Candle Arms	7.00	
	4-1536 Peg Nappies	5.00	
	3-1633 Peg Vases	3.75	
		<u>\$18.55</u>	\$18.50 each

47	1-628 Candlestick	1.40	
	2-1563 4 Candle Arms	7.00	
	3-1633 Peg Vases	3.75	
		<u>\$12.15</u>	\$12.00 each

64	1-628 Candlestick	1.40	
	2-1563 4 Candle Arms	7.00	
	3-1536 Peg Nappies	3.75	
		<u>\$12.15</u>	\$12.00 each

"CAMBRIDGE SQUARE"

Designed for Present Day Living

(Patent Pending)

Made in Crystal

		Price Per Doz.	Price Each
3797	Goblet	(Footed) \$23.40	\$1.95
3797	Sherbet	" 23.40	1.95
3797	Cocktail	" 23.40	1.95
3797	Wine	" 23.40	1.95
3797	Cordial	" 23.40	1.95
3797	5 oz. Juice	" 23.40	1.95
3797	14 oz. Ice Tea	" 23.40	1.95
3797/23	7" Salad Plate	23.40	1.95
3798	Goblet	(Stemmed) 23.40	1.95
3798	Sherbet	" 23.40	1.95
3798	Cocktail	" 23.40	1.95
3798	Wine	" 23.40	1.95
3798	Cordial	" 23.40	1.95
3798	5 oz. Juice	" 23.40	1.95
3798	12 oz. Ice Tea	" 23.40	1.95
3797/23	7" Salad Plate	23.40	1.95
3797/15	Tea Cup & Saucer	27.00	2.25
3797/16	4½ in. Dessert	16.20	1.35
3797/17	Coffee Cup & Saucer	27.00	2.25
3797/18	2 pc. Cocktail Icer	36.00	3.00
3797/20	6 in. Bread & Butter Plate.....	16.20	1.35
3797/22	7 in. Salad Plate	23.40	1.95
3797/23	7 in. Salad Plate or Dessert	23.40	1.95
3797/24	9½ in. Tidbit Plate	39.00	3.25
3797/25	9½ in. Dinner Plate	39.00	3.25
3797/26	11½ in. Cake Plate	66.00	5.50
3797/27	6½ in. Ind. Salad Bowl	23.40	1.95
3797/28	13½ in. Torte Plate	78.00	6.50
3797/29	4 pc. Buffet Set	129.00	10.75
3797/35	7½ in. Cupped Rose Bowl	66.00	5.50
3797/36	9½ in. Cupped Rose Bowl	78.00	6.50
3797/37	8 in. Oval Tray	19.80	1.65
3797/40	Ind. Sugar & Cream	(set) 30.00	2.50
3797/41	Reg. Sugar & Cream	(set) 39.00	3.25
3797/42	3 pc. Sugar & Cream (Ind.) (set)	49.80	4.15
3797/47	8 in. Bonbon	39.00	3.25
3797/48	10 in. Oval Dish	60.00	5.00
3797/49	9 in. Salad Bowl	66.00	5.50
3797/54	6 in. Comport	33.00	2.75
3797/57	11 in. Salad Bowl	78.00	6.50
3797/65	12 in. Oval Dish	78.00	6.50
3797/67	Cup Candlestick	19.80	1.65
3797/68	2 pc. Hurricane Lamp	36.00	3.00
3797/69	2 Lite Candlestick	39.00	3.25
3797/76	Salt & Pepper	(Doz. pairs) 27.00	2.25
3797/77	7½ in. Ftd. Vase	39.00	3.25
3797/78	9½ in. Ftd. Vase	66.00	5.50
3797/79	11 in. Ftd. Vase	99.00	8.25

CAMBRIDGE SQUARE (cont'd)

		Price Per Doz.	Price Each
3797/80	8 in. Bud Vase	33.00	2.75
3797/81	10 in. Shallow Bowl	66.00	5.50
3797/82	12 in. Shallow Bowl	78.00	6.50
3797/85	32 oz. Decanter	120.00	10.00
3797/86	7 pc. Wine Set		20.70
3797/87	7 pc. Cordial Set		20.70
3797/91	5½ in. Vase, belled	33.00	2.75
3797/100	4½ oz. Oil	33.00	2.75
3797/103	11 in. Celery	39.00	3.25
3797/104	4 pc. Condiment Set (37/100/76)	79.80	6.65
3797/105	5 pc. Condiment Set (37/40/76)	76.80	6.40
3797/120	6½ in. 2 Part Relish	30.00	2.50
3797/125	8 in. 3 Part Relish	48.00	4.00
3797/126	10 in. 3 Part Celery & Relish.....	66.00	5.50
3797/127	Mayonnaise Bowl	27.00	2.25
3797/127/445	2 pc. Mayonnaise Set	33.00	2.75
3797/129	3 pc. Mayonnaise Set	45.00	3.75
3797/150	6½ in. Ash Tray	30.00	2.50
3797/151	3½ in. Ash Tray	7.20	.60
3797/152	3 pc. Smoker Set	(boxed) 30.00	2.50
3797/164	7 in. Bonbon	33.00	2.75
3797/165	Candy Box & Cover	66.00	5.50
3797/476	11½ in. Punch Bowl (5 qts.).....	144.00	12.00
3797/476/15	13 pc. Punch Set		25.00
3797/492	1¾ in. Sq. Candlestick	21.00	1.75
3797/493	2¾ in. Sq. Candlestick	24.00	2.00
3797/495	3¾ in. Sq. Candlestick	30.00	2.50

CAPRICE

Patent Nos. 98,825—98,993—99,448

Made in Crystal

		Price Per Doz.	Price Each
300	9 oz. Goblet	\$18.00	\$1.50
300	6 oz. Tall Sherbet	18.00	1.50
300	6 oz. Low Sherbet	18.00	1.50
300	3 oz. Cocktail	18.00	1.50
300	2½ oz. Wine	18.00	1.50
300	1 oz. Cordial	18.00	1.50
300	4½ oz. Low Cocktail	18.00	1.50
300	4½ oz. Claret	18.00	1.50
300/2	12 oz. Ftd. Ice Tea (on stem)	18.00	1.50
300	10 oz. Ftd. Tumbler	18.00	1.50
300	5 oz. Ftd. Tumbler	18.00	1.50
301	Goblet	18.00	1.50
301	Sherbet	18.00	1.50
301	Cocktail	18.00	1.50
301	Claret	18.00	1.50
301	Wine	18.00	1.50
301	Cordial	18.00	1.50
301	Low Cocktail	18.00	1.50
301	Ice Tea	18.00	1.50
301	Juice	18.00	1.50
310	12 oz. Ice Tea	9.60	.80
310	10 oz. Table Tumbler	9.60	.80
13	3½ in. Coaster	3.60	.30
13	8 pc. Coaster Set in Box	27.00	2.25
17	Cup and Saucer	(2 pc.) 19.80	1.65
21	6½ in. B. and B. Plate	13.20	1.10
22	8½ in. Salad Plate	18.00	1.50
23	7½ in. Salad Plate	15.00	1.25

CAPRICE (cont'd)

		Price Per Doz.	Price Each
24	9½ in. Dinner Plate	24.00	2.00
26	11½ in. Plate	33.00	2.75
28	14 in. Plate	48.00	4.00
30	16 in. Plate	93.00	7.75
32	11 in. 3 Ftd. Cabaret Plate	33.00	2.75
33	14 in. 3 Ftd. Cabaret Plate	48.00	4.00
36	13 in. Cake	51.00	4.25
37	6 in. Oval Tray	13.20	1.10
38	Sugar and Cream, 4 Ftd.	18.00	1.50
39	3 pc. Sugar and Cream Set	30.00	2.50
40	4 Ftd. Ind. Sugar & Cream	16.20	1.35
52	¼ lb. Butter & Cover	27.00	2.25
53	10½ in. Crimped 3 Ftd. Bowl	33.00	2.75
54	10½ in. Belled, 3 Ftd. Bowl	33.00	2.75
61	12½ in. Crimped Bowl, 3 Ftd.	48.00	4.00
62	12½ in. Belled Bowl, 3 Ftd.	48.00	4.00
65	11 in. 2 Hdl. Oval Bowl, 4 Ftd.....	36.00	3.00
66	13 in. Bowl, Crimped, 4 Ftd.	36.00	3.00
67	2½ in. Candlestick	9.00	.75
81	11½ in. Shallow, 3 Ftd. Bowl	33.00	2.75
82	13½ in. Shallow cupped, 3 Ftd. Bowl	48.00	4.00
96	Salt and Pepper Shaker w/Chrome top	(prs.) 21.00	1.75
102	9 in. Pickle	18.00	1.50
117	3 oz. Oil, g.s.	27.00	2.25
120	6¾ in. 2 part Relish	16.20	1.35
122	8 in. 3 part Relish	19.80	1.65
124	8½ in. 3 part Celery and Relish Tray	27.00	2.25
125	12 in. 3 part Celery and Relish....	36.00	3.00
129	6½ in. 3 pc. Mayonnaise Set	33.00	2.75
130	7 in. Low Footed Comport	16.20	1.35
131	8 in. Low Footed Plate	16.20	1.35
133	6 in. Low Footed Bonbon, Sq.....	16.20	1.35
136	7 in. Tall Comport, Footed	27.00	2.25
144	4 in. 2 Hdl. Jelly	6.60	.55
145	5 in. 2 Hdl. Lemon Plate	6.60	.55
147	4 in. 2 Hdl. Square Bonbon	6.60	.55
151	5 in. 2 Hdl. Jelly	12.00	1.00
152	6 in. 2 Hdl. Lemon Plate	12.00	1.00
154	6 in. 2 Hdl. Bonbon, Sq.	12.00	1.00
165	6 in. 3 Ftd. Candy Box & Cover....	33.00	2.75
183	80 oz. Ball Jug	54.00	4.50
201	Ice Bucket with Handle	39.00	3.25
201	Ice Bucket with Handle & Tongs..	48.00	4.00
207	Cigarette Box and Cover 3½x2¼ in.	16.20	1.35
213	2¼ in. 3 Ftd. Ash Tray with Place Cardholder	3.00	.25
207/213	6 pc. Smoker Set in Box	30.00	2.50
214	3 in. Ash Tray	4.20	.35
215	4 in. Ash Tray	6.60	.55
216	5 in. Ash Tray	9.60	.80
214/215/216	3 pc. Ash Tray Set	18.00	1.50
646	5 in. Candlestick	27.00	2.25
647	2-lite Candlestick	33.00	2.75
1338	3-lite Candlestick	39.00	3.25

— Classified —

FOR SALE: Caprice crystal thin water goblets \$17, cocktails \$20, wines \$25, three-part relish \$25; blue cups and saucers \$37.50. 6½" Bashful Charlotte \$35. #3779 Daffodil wines #35. Ten #3600 Chantilly cocktails, gold trim rim and foot \$25. 7" smoke Nude comport \$150. Have more Cambridge. Write wants — I search. CRYSTAL MATCHING SERVICE. Betty J. Maki, 1155 Willow St. #24, Faribault, MN 55021, (507) 334-4457. SASE please.

WANTED: CAMBRIDGE ROYAL BLUE — Anything — but love Nude Stem items. If you see Cobalt — think COBALT CAROL Markowski, 3141 West Platte Ave., Colorado Springs, CO 80904.

FOR SALE: Forest Green #1402/71 two handled bowl, \$30. Forest Green, style 1307 triple candleabra, no etching on base, \$45 plus postage and insurance. Kay Hills, 48 York Drive, Hudson, OH 44236, (216) 650-0456.

WANTED: CAMBRIDGE ROSEPOINT candlestick chimney, 9½ inches high by 4¾ inches top diameter — with 10 prism non-locking bobèche, 5 inches diameter. Gizella Dufala, 5012 Grace, North Olmsted, OH 44070, (216) 777-0902.

BUYING: Cambridge Rosepoint, Heisey Rose and Orchid, Fostoria etched dinnerware and Depression Glass. Also glass figures and unusual glass pieces. NADINE PANKOW, 207 S. Oakwood, Willow Springs, ILL. 60480. Phone: (312) 839-5231.

WANTED: 2 CAMBRIDGE CHANTILLY 3 oz. cocktails — #3625. Mrs. Robert Eberhard, R.D. 1, Kingsley, IA 51028, (712) 378-2518.

FOR SALE: Approximately forty pieces of CAMBRIDGE ROSEPOINT crystal. Can deliver late in September. If interested write: Mrs. Ralph Flath, Apt. 907, 308 Second Street East, Cornwall, Ontario K6H 1Z1.

BUYING: All patterns in Cambridge, Heisey, Duncan, Tiffin, and the older patterns in Fostoria. Send list of any overstocks to: THE CRYSTAL CORNER, P.O. Box 256, Wedowee, Alabama 36278.

STAGE COACH ANTIQUE MALL

(formerly White Pillars Antiques)

7525 East Pike
Norwich, OH 43767
614/872-3720

MANY DEALERS

PLENTY OF PARKING

WIDE SELECTION OF GLASS
AND POTTERY
FURNITURE AND
GENERAL LINE!

BUY ----- SELL ----- TRADE

OPEN YEAR ROUND

Weekdays - 10 AM - 5:30 PM

Sunday - 12 noon - 5:30 PM

Summer Evening Hours - by Chancel

Located 9 miles E. of Zanesville, OH, on I-70 to Norwich
Exit #164 - then 1/2 mile W. on Route 40.

FOR SALE MUCH CRYSTAL CAPRICE

Send SASE for Price List

ALSO:

- 4 pink salad plates, marked
- 6 green cereal or berry bowls, marked
- 4 sets green cups and saucers, marked
- 1 pink rolled edge bowl for Nude, 13" side to side, 9½" middle
- 2 gold 3½" swans, with labels
- 1 black flower holder
- 1 carmen and blue sweetmeat dish
- 1 gold 3-piece mayonnaise set with glass ladle, marked

Mrs. Robert Eberhard
R.D. 1
Kingsley, Iowa 51028
712-378-2518

COLUMBUS, OHIO ANTIQUUE FLEA MARKET

OUTDOOR RACE TRACK SHOW

**OHIO STATE FAIRGROUNDS
OFF I-71 EXIT 17th AVE.
COLUMBUS, OHIO**

SEPTEMBER 19th

**Sunday Only — 6 A.M. To 5 P.M.
Show Admission \$1⁰⁰ — Under 12 Free
300 QUALITY DEALERS**

SELLING: Advertising Art Deco, books, Cambridge, clocks, coins, collectibles, depression glass, dolls, Fiesta, fine early furniture, Heisey, jewelry, lamps, oak furniture, postcards, pottery, good primitives, tools, and print shop items.

FOR MORE INFORMATION:

STOCKWELL PROMOTIONS

**4214 N. HIGH ST.
COLUMBUS, OHIO 43214
(614) 267-8163 OR 263-6830 OR 885-2352**

**RAIN
OR
SHINE**

NEXT SHOWS

Nov. 21st
Dec. 12th
Jan. 9th
Feb. 27th
April 17th

**RAIN
OR
SHINE**

ANTIQUES & COLLECTIBLES

<p>HOUSE OF QUALITY ANTIQUES and COLLECTIBLES <i>Specializing in Glass</i> 128 E. Elm St. Don & Jane Rogers O'Fallon, MO Home 314-272-6854 1-327-8819</p>	<p>BROWN & BROWN APPRAISALS <i>Glass - China - Pottery</i> 1944 Sioux Place Kent, Ohio 44240 Flat Rates, N & E Ohio Only</p>	<p>CHARLES MIKULIK Box 416 Elizabeth, N.J. 07207</p> <p>— COLLECTOR —</p> <p>Always paying good prices for CAMBRIDGE CAPRICE in all colors 201-688-1144</p> <p>CARRY MOST TYPES OF ANTIQUES</p>
<p>EVELYN M. ALLEN 135 Cynthia Street Heath, Ohio 43055 Mail Order & Shows 614-522-1635 SPECIALIZING IN CAMBRIDGE GLASS!</p>	<p>BENICIA ANTIQUE SHOP 305 First Street Benicia, California 94510</p> <p>OPEN 11 AM - 5 PM Closed Monday</p> <p>Z. E. LOPES 707-745-0978</p>	
<p>DAVID NIELSEN 109 Lincolnway LaPorte, Indiana 219-326-7276</p> <p>CAMBRIDGE - HEISEY - GENERAL LINE</p>	<p>VISIT HISTORIC BENICIA and its 28 shops Off Interstate #80 North of San Francisco</p>	<p>ROUND HOUSE BOOKS We carry more than 1000 current titles on Antique and Collectibles For More Information, Write Box 302-C, Mt. Vernon, Ohio 43050</p>
<p>BERKELEY ANTIQUES 69 Berkeley St. Boston, MA 02116 George or Frank 617-426-1048 CAMBRIDGE, HEISEY, GENERAL LINE</p>	<p>ANDREJCAK'S ANTIQUES 14533 Bayes Ave. Lakewood, Ohio 44107 Joe & Karen Andrejcek 216-226-3417 SHOWS ONLY — CAMBRIDGE — FENTON — CHINA</p>	<p>A. SPRINGBORN 5434 Windridge Lane Orlando, Florida 32810</p> <p>SHOP No. 34 — WEBSTER, FL Open Every Monday 305/298-3011</p>
<p>D & D ANTIQUES Columbus, Ohio</p> <p>DICK SLIFKO SHOWS ONLY</p>	<p>THE HITCHING POST 7467 S. R. 88 Ravenna, OH 44266 Ph. 216-296-3686 D. McDaniel CAMBRIDGE — HEISEY — GENERAL LINE</p>	<p>FINDER'S KEEPER'S ANTIQUES P.O. Box 303 P.O. Box 16023 Dayton, O. Columbus, O. 45401 43216 513-254-2937 614-885-2726 SPECIALIZING IN CAMBRIDGE GLASS!</p>
<p>THE GLASS CUPBOARD 39 Shire Oaks Drive Pittsford, New York 14534 Marcia Ellis 716-586-7596 CAMBRIDGE ONLY INQUIRIES INVITED</p>	<p>GEORGE HOFFMAN ANTIQUES 129 South 4th Street Newark, Ohio 43055 614-345-8021</p>	<p>SNYDER ANTIQUES P.O. Box 010 Gates Mills, Ohio 44040 SPECIALIZING IN CAMBRIDGE GLASS Mail Order, Shows 216-461-2110 By Appointment</p>
<p>KILPATRICK'S ANTIQUES Lu & Dort 400 W. 6th St., Bloomington, IN 47401 Res. 812/332-8754 Shop 812/339-1120 We buy one piece or collections</p>	<p>J & L GLASS Laws Antique Center, Manassas, VA 22111 and 10629 Main St. Fairfax, VA 22030 703/273-8579 BUY & SELL: Depression, Cambridge, Heisey, Duncan & Fostoria Glass</p>	<p>1886 HOUSE East Schodack, N.Y. 12063 MAIL and SHOWS Laurie Cruise 518-477-5895 CAMBRIDGE - MORITAKE - AZALEA - D.G.</p>
<p>joyce's antiques Bought and Sold Specializing in HEISEY • CAMBRIDGE • VERLYS • AMERICAN GLASS P O Box 114, Albertson, N Y 11507 (516) 499-3396</p>	<p>ROLLING ACRES ANTIQUES 66484 N. 8th Street Road Cambridge, Ohio 43725 Sandy Jenkins & Anne Ingram 614-432-2570 CAMBRIDGE & GENERAL LINE ANTIQUES</p>	<p>BILL & SHARON PHILLIPS 21730 Priddy Euclid, Ohio 44123 Ph. 216-261-4665 Shows Only BUYING GLASS, ANTIQUES, ETC.</p>
<p>CHARLES A. SHAW P.O. Box 147 Church St. New York, NY 10008-147 Phone (914) 476-6590 AMERICAN GLASS SHOWS & MAIL ORDER</p>	<p>AL STEELE Westerville, Ohio 614-882-6483 or 614-882-7124 Mail Orders and Shows Only HEISEY — CAMBRIDGE — PATTERN GLASS</p>	<p>SWISS HILLS COLLECTIBLES 303 Guilford Ave., Woodsfield, OH 43793 Mary & Wilbur Henderson 614/472-1133 SPECIALIZING IN CAMBRIDGE GLASS Shows, Mail & Stagecoach Antique Mall</p>
<p>MARGARET LANE ANTIQUES 2 E. Main St., New Concord, OH 43762 Lynn Welker 614/826-4418 CAMBRIDGE GLASS MATCHING SERVICE Hours Mon.-Fri. 1-5 PM or by Appointment</p>	<p>SHIRLEY S. LADOUCEUR Antiques and Collectibles Specializing in Cambridge Glass BY APPOINTMENT 7597 Daphne Drive 315-458-5297 No. Syracuse, NY 13212</p>	<p>GREEN ACRES FARM Antiques, Crystal Glass & Collectibles Sat. & Sun. 1-7 PM (614) 927-1882 2678 Hazelton Etna Road (State Route 310 North) Pataskala, Ohio 43062</p>



National Cambridge Collectors, Inc.

P. O. Box 416, CAMBRIDGE, OHIO 43725

A nonprofit organization dedicated to the preservation and study of Cambridge Glass

You Are Cordially Invited
To Become A Member Of The

NATIONAL CAMBRIDGE COLLECTORS, INC.

Benefits derived from membership include: receipt of our club publication, The Cambridge CRYSTAL BALL; informative Quarterly Meetings; Antique Shows; Auctions; and other special events.

The Cambridge CRYSTAL BALL is published the first of each month. This newsletter contains educational and interesting articles, questions and answers, information on reproductions and reissues, notices of all club functions, classified advertisements, dealers directory, and many other features of interest to collectors of Cambridge Glass.

Yearly dues are \$13.00 for Individual Members and \$3.00 for each Associate Member. All members have voting rights, but only one issue of the CRYSTAL BALL will be mailed per household.

Name (please print) _____ \$13.00

Mailing Address _____

City _____ State _____ Zip _____

Associate Members: (Must be at least 12 years of age and living in the same household.)

1. Name _____

2. Name _____

3. Name _____

Total number of Associate Members _____ @ \$3.00 each \$ _____

TOTAL AMOUNT ENCLOSED: \$ _____

Please make check payable to: NATIONAL CAMBRIDGE COLLECTORS, INC.

Recommended by _____

USE THIS APPLICATION - NCC MEMBERSHIP MAKES A "GREAT GIFT"!

VISIT YOUR MUSEUM of CAMBRIDGE GLASS

HOURS:

Tuesdays thru Fridays - 1:00 to 4:00 P.M.

Saturdays and Sundays - 10:00 to 5:00 P.M.

Closed December and January

Museum Telephone Number - 614-432-4245



National Cambridge Collectors, Inc.

P. O. Box 416
Cambridge, Ohio 43725

FIRST-CLASS MAIL
U.S. POSTAGE
PAID

Cambridge, Ohio
43725
Permit No. 1

FIRST CLASS MAIL