

Cambridge



Crystal Ball

ISSUE NO. 102

OCTOBER 1981

Published monthly by the NATIONAL CAMBRIDGE COLLECTORS, Inc.
To encourage and to report the discovery of the elegant and boundless product
of the Cambridge Glass Company, Cambridge, Ohio



THOUGHTS from your President

How can we tell when fall has finally arrived? Well, we could look at the calendar, or we could say that football season has started, or we could say that baseball season is almost over. But I think the real time to tell is when you get up early on a Saturday or Sunday morning to be the first one at the flea market and find that all the glass is covered with frost. And that's not the kind that was put on in the glass factory either.

Another sure sign of fall is the announcement of our November Quarterly Meeting. It will be held November 7th at the Shenandoah Inn, in the same room we have used for a show room at Convention. Many people had asked us to try to hold the meeting at the Shenandoah, so we contacted the management and they were happy to accommodate us. A cocktail hour will begin at 6:00 P.M. (pay bar), and a buffet dinner at 7:00 P.M. will be followed by the Quarterly Meeting at 8:00 P.M. Those of you who cannot attend the dinner are most welcome to attend the meeting which will feature a fine program, show and tell, and also our semi-annual mini-auction, if you good people will bring something for us to auction. Your reservation information is in this issue of the Crystal Ball. Please try to get reservations to us by November 2nd so we will have time to make final arrangements. The Shenandoah Inn is located 7 miles East of Cambridge at Exit 186 (Old Washington) of Interstate 70.

You may want to come a little early and drive by our property where we are working on the existing building to convert to a temporary MUSEUM. It is located just East of the intersection of Rt. 40 and Interstate 77.

MEMBERSHIP RENEWAL NOTICE

If the date on your address label is - - **10-81**

This is your LAST ISSUE of the CRYSTAL BALL.
Please renew NOW!

Work may seem to be progressing slowly, but it is not for lack of willing workers. The response of those who are willing to spend a few hours at hard labor is fantastic. The slow down, if you can call it that, is due to our trying to accomplish this task with a minimal outlay of funds. In other words, we are trying to find people who are willing to donate materials we can use, and if we have to buy them, we are finding the best price. So far, we have donated bricks and cedar paneling to face the front of the building, and also the lighting and electrical supplies and drop ceiling. We are in need of many other supplies such as two by fours, carpeting, file cabinets, an office desk, bathroom fixtures and miscellaneous other materials. If you have any of these things lying around not being used, or if you know someone who may, we will make good use of them. Contact Billy Harbaugh through the NCC address.

Hope to see you at the November Quarterly! *Willard*

YOUR ATTENTION PLEASE!!

On September 20th a robbery occurred at the Cambridge Post Office. Therefore, it is requested that anyone who mailed anything larger than standard letter size to the NCC address between September 10th and September 20th should write immediately and let us know what the item was. Thank you for your prompt attention to this matter.

NEW MEMBERSHIP CONTEST ANNOUNCED

Membership Chairman, Phyllis Smith, has informed us that a new Membership Contest is now underway. It began July 1st, 1981 and will end June 1st, 1982.

The NCC member bringing in the most NEW MEMBERS during the eleven-month period will be presented with a personalized Mosser/NCC paperweight during our 1982 Convention.



CAMBRIDGE CRYSTAL BALL

Official publication of National Cambridge Collectors, Inc., a non-profit corporation with tax exempt status. Published once a month for the benefit of its members.

Membership is available for individual members at \$10 per year and additional members (12 years of age and residing in the same household) at \$3 each. All members have voting rights, but only one *Crystal Ball* will be mailed per household.

Back issues of the *Crystal Ball* are available (beginning with Issue No. 1, May 1973) for members only. Cost: \$.60 each or 12 issues for \$7.

1981-82 OFFICERS & COMMITTEE CHAIRPERSONS

PRESIDENT Willard Kolb
VICE-PRESIDENT Josephine Barstow
SECRETARY Janice Hughes
TREASURER William Smith
SERGEANT-AT-ARMS Don Armbricht

BOOK SALES Meg Turner
BUDGET & FINANCE David Rankin
BY-LAWS David Rankin
CONVENTION Josephine Barstow
MEMBERSHIP Josephine Barstow
MUSEUM Billy Harbaugh
PROGRAM & ENTERTAINMENT Frank Wollenhaupt
PROJECT Willard Kolb
PUBLIC RELATIONS William Smith
PUBLICITY Joseph Andrejcek
STUDY GROUP ADVISORY Jack Rettig
1982 ALL-CAMBRIDGE AUCTION Lynn Welker
1982 ANTIQUE SHOW

CRYSTAL BALL EDITOR Peg Gotschall

CLASSIFIED ADVERTISING RATES

5c per word \$1.00 minimum
We cannot mix type size in classified advertisements. Abbreviations and initials will count as words. Payment in full MUST accompany all ads.

DISPLAY ADVERTISING RATES

	Members	Non-Members
1/8 page	\$ 4.00	\$ 6.00
1/4 page	7.00	10.00
1/2 page	12.00	18.00
3/4 page	17.00	25.00
Full page	22.00	33.00

DEALERS DIRECTORY

1" ad (5 line maximum) \$6.00 for 6 months

Cambridge Crystal Ball assumes no responsibility for items advertised and will not be responsible for error in price, description or other information.

Advertising copy must be in our hands by the 10th of each month to assure publication in our next issue. Advertisements containing reproductions will not knowingly be accepted unless clearly stated.

PLEASE ADDRESS ALL CORRESPONDENCE TO

Cambridge Crystal Ball
National Cambridge Collectors, Inc.
P.O. Box 416
Cambridge, Ohio 43725

PLEASE NOTIFY US IMMEDIATELY OF ANY CHANGE IN YOUR ADDRESS!

Please enclose a self-addressed stamped envelope when requesting information!!

Club News

National Cambridge Collectors, Inc.
Quarterly Meeting
August 30, 1981
Columbia Gas of Ohio, Cambridge, Ohio

The meeting was called to order at 1:35 P.M. by President Kolb. In attendance were 22 members and 11 Board of Directors.

President Kolb introduced the new officers as follows:

PRESIDENT: Willard Kolb
VICE-PRESIDENT: Jo Barstow
SECRETARY: Janice Hughes
TREASURER: Bill Smith

President Kolb announced George Hoffman had resigned from the Board of Directors. He recommended and the Board accepted the appointment of Billy Harbaugh to fill the un-expired term.

The minutes of the June 28, 1981 meeting were read by Janice Hughes. The recommendation of Phyllis Smith as an Honorary Member was amended by the Board of Directors to Lifetime Honorary Member with voting privileges.

The Treasurers report was given by Bill Smith showing the Operating Equity to be \$14,068.54 and the Museum Equity \$67,617.82.

COMMITTEE REPORTS:

BY-LAWS: No report. President Kolb stated the revised By-Laws have been printed and will be sent to new members and anyone requesting a copy.

CONVENTION: Chairman Jo Barstow reported the Convention profit of \$745.91 was due to changed prices and anonymous donations. She also stated she is appointing committees for next year.

CRYSTAL BALL: Editor Peg Gotschall stated she needed articles and ads. The articles will be used as space permits without increasing the number of pages in the *Crystal Ball*. Janice Hughes reported the *Crystal Ball* was mailed this month without being folded and asked if anyone received one damaged to let her know.

MEMBERSHIP: Chairman Phyllis Smith reported as of August 1 we have 1,092 members. She also announced there will be a membership contest again this year with a personalized Mosser/NCC paperweight as prize.

PROJECT: Chairman Willard Kolb reported we still have some Scottie book ends. The bull dog motif has been accepted by Pair-point and should be available sooner than we expected. The reprint 1913 picture post card is now available.

PUBLICITY: No report.

STUDY GROUP ADVISORY: No report.

BUDGET AND FINANCE: No report.

continued on page 3

3011 FIGURE STEM LINE

by Janice Hughes &
Lynn Welker

CANDLESTICKS

1st style (petals in)

The nude is 6" (largest size nude)
The top width is 2"
The top length is 2½"
The overall height is 8½"



2nd style (petals out)

The nude is 6" (largest size nude)
The top width is 2"
The top length is 2½"
The overall height is 8¾"-9"

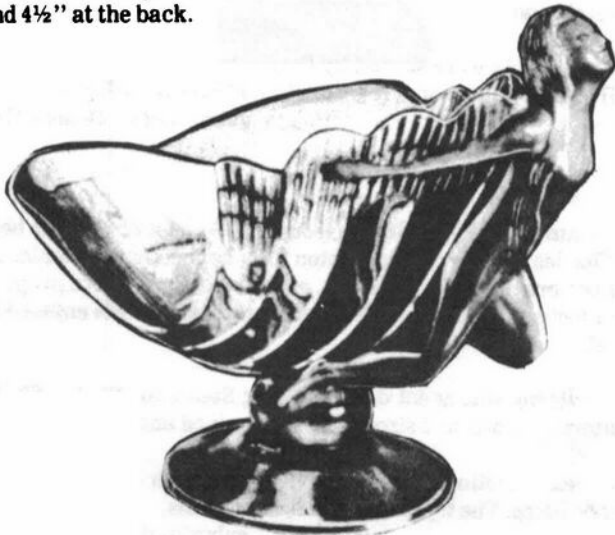


3rd style (bobeche locking top)

The nude is 6" (largest size nude)
The top width is 2"
The top length is 2½"
The overall height is 9"

FLOWER OR FRUIT CENTER (flying lady bowl) 3011/40

The top width varies from 7¼ to 7¾
at the widest point
The length from back of shell to the
lady's chin varies from 12" to 12½"
The overall height is 9" at the front
and 4½" at the back.



The candlesticks are pictured in the NCC 1930-34 Catalog Reprint on page 34-2. There are no identifying numbers. The flower or fruit center is pictured in Welker Reprint I on page 44.

There are two styles of candlesticks without the bobeche lock. One style has a petal effect around the top edge which we are calling "petals out". The second style has inverted places where the other has petals. We are calling this "petals in". Some of these will have the top polished flat instead of the petal effect. This was done at the factory. The third style has an addition to the candle cup that holds the bobeche. There are small nubs on top of the candle cup edge which the bobeche fits over.

The candlestick with "petals in" was made in crown tuscan. The other styles were made in crown tuscan, windsor blue, crystal, carmen, royal blue, gold krystal, forest green, amethyst, amber and pearl mist (crystal frosted).

The candlesticks have been seen in crystal with various cuttings from the 1930's; two of these are in the 1930-34 Catalog Reprint on page 32-22.

The crown tuscan are known with various gold encrusted etchings such as Diane, candlelight, Rosepoint, Portia and chintz. Also, with Charleton decorations.

The flower or fruit center came in the same colors as the candlesticks. Also, crown tuscan with Charleton enamel floral decorations.

None of these have been re-produced.

(Next month — unusual nude items.)

Club News - continued from page 2

MUSEUM: Chairman Billy Harbaugh reported 20 volunteers have been working at the Museum property and had a very productive week. The exterior painting will be finished the next work night.

PROGRAM: Chairman Frank Wollenhaupt reported the program would include a film and 2 molds.

AUCTION: Chairman Lynn Welker reported he is now accepting glass and the cut off date will be December 1, 1981. Only 300 lots will be accepted. More information will be in the next *Crystal Ball*.

SHOW: No report.

MUSEUM CURATOR: No report.

OLD BUSINESS: None

NEW BUSINESS: None

Frank Wollenhaupt showed a Fenton film on the making of glass and had on display a 3400 vinegar tilt jug mold and the 3" swan mold from Mosser Glass.

President Kolb reported a picture of the mold shop at Cambridge Glass Co. has been donated to the Museum by Estella Klass.

Show and Tell was conducted by Lynn Welker.

A motion was made by Frank Wollenhaupt to adjourn at 3:00 P.M.

Janice Hughes
Secretary

1982 AUCTION

Lynn Welker
1982 Auction Chm.

CONSIGNMENTS: We are now accepting consignments for the 1982 NCC All-Cambridge Auction to be held February 27, 1982 at the Shenandoah Inn, Old Washington, Ohio. All glass to be sold will be guaranteed to be old and authentic Cambridge glass.

The consignment fee is 20% with all proceeds to benefit the NCC MUSEUM fund.

PROCEDURE: You may place as many consignments as you wish. A list of any glass to be consigned must be sent to the auction committee for approval before the glass is sent to us. Please sent this list to: Lynn Welker, 2 East Main, New Concord, Ohio 43762.

Consignments will be accepted in the order that your list is received up to 300 lots. This is the cut-off point for consignments to the auction. We do not have to have your glass immediately, but we would like to receive it by December so that the glass can be properly catalogued. We need about two months for cataloguing, printing, and mailing so that we can accept mail bids as usual. The auction committee reserves the right to reject any glass for consignment, due to damage, duplication, or questionable origin.

DROP-OFF POINTS: When your list of glass for consignment has been approved, you may drop it off or mail it to any of the following members:

Joe Andrejcek, Lakewood, Ohio	216-226-3417
Bill Harbaugh, Cambridge, Ohio	614-439-6685
Janice Hughes, Cambridge, Ohio	614-432-7823
Joy McFadden, Columbus, Ohio	614-885-2726
Bill Smith, Springfield, Ohio	513-323-3888
Lynn Welker, New Concord, Ohio	614-826-4418
Frank Wollenhaupt, Dayton, Ohio	513-254-2937

Again, you must send your list of glass before leaving it with any of these members.

For any additional information: Phone 614-826-4418.

NOTE: CHANGE IN BOARD OF DIRECTORS

After several years of service to NCC, George Hoffman of Newark, Ohio has resigned from the Board of Directors. His unexpired term will be filled by Billy Harbaugh of Senecaville, Ohio, who was appointed by the Board of Directors.

Though Billy's home is in Senecaville, he is very active in Cambridge community affairs and in NCC. Since 1979 he has served on the Auction and MUSEUM committees, and is currently serving in the important capacity of MUSEUM Chairman.

PLEASE CHECK YOUR ADDRESS LABEL

Our mailing list has been completely retyped, and we hope there are no errors. However, we would appreciate your checking your mailing label to make certain it is correct in every way. If there is an error, please let us know so that a correction can be made before the November mailing.

STUDY Club News

STUDY GROUP #5 - SOUTHERN CALIFORNIA
"CALIFORNIA CAMBRIDGE COLLECTORS"

California Cambridge Collectors met August 21st at Beverley Hanson's home. There were twelve members attending.

The theme of the meeting was the EVERGLADES PATTERN. Many beautiful pieces were displayed including vases, console sets, plates, and even a large pink bowl with the Buffalo Hunt motif. Pat Daly discussed Everglades, and she had researched the topic thoroughly, and even had a booklet printed for each member.

Many lovely items were shared during Show and Tell. They were: a mocha draped lady; azurite vase with gold trim, carmen hat ashtray; milk glass with gold salt and pepper; Stradivari cordials; royal blue ice bucket; Mardi Gras rose bowl; Martha Washington creamer and sugar; willow blue Ramshead candlestick; and Chantilly sugar and creamer with Sterling base.

Pat Daly brought along some rare items, a few which were purchased at the Cambridge Convention. They were a mandarin gold shell nude stem comport, a ritz blue turkey, Windsor blue ashtrays and cigarette box and a 6½" carmen #3 swan.

Beverley then served a lovely buffet using blue Caprice dishes and serving plates. It was a beautiful sight to see the table completely set in blue Caprice.

submitted by Joan McDowell, Secretary

STUDY GROUP #7 - EASTERN OHIO "THE CAMBRIDGE BUFFS"

The Cambridge Buffs Study Group met July 15th at the home of Lena Barnes. Ten members were present.

It was reported that 106 Cambridge Collector lapel pins and tie tacs were sold at the Convention for a total of \$286.

Thirty-four goblets were on display for study. They were identified and several especially interesting ones were a carmen with nude stem, a crystal cut top with peachblo stem, a Candlelight etch, and a Formal pattern with amber stem and crystal bowl.

Refreshments were served by the hostess. The August meeting will be held at the home of Charles and Mary Alice Upton.

submitted by Deanne Gray

The Cambridge Buffs Study Group met August 22nd at the home of Charles and Mary Alice Upton for a barbecue and picnic. The Uptons provided the barbecue, and picnic dishes were prepared by other members. Twelve members and six guests enjoyed the meal.

The evening was spent on identifying Stems for the MUSEUM. Patterns, colors, and sizes were determined and then recorded.

The next meeting will be on September 9th with Karen and Larry Jones. The topic will be Pressed Stems.

submitted by Deanne Gray

continued on page 11

THE EVERGLADE LINE

by Phyllis Smith

It is evident from our research efforts that the Everglade line was produced by the Cambridge Glass Company from early 1930 until the close of the Cambridge factory in July 1954. The entire line was not in production at all times, but at least selected pieces were produced during much of this time frame. During its twenty-four year life-time it was introduced and re-introduced by several different names, which we feel should all be included under the general name of Everglades.

To the best of our knowledge the first introduction of this pattern appeared in the 1930 Catalog of the Cambridge Glass Company under the name of "Springtime." This lovely pattern is shown in the NCC 1930-34 Catalog Reprint on pages 64 thru 67. This Springtime line was later referred to as the "La Fleur" line in an article appearing in the April 1930 edition of the *China, Glass and Lamps* publication. This article read in part, "Illustrated and typical of these new things are a bowl and vase. In vases, this assortment presents five different sizes, shapes and patterns in a color selection of Jade, Krystal and Ebony. It is known as the "La Fleur" line, and bears this name as each treatment features a different type of flower. The flowers are raised and in a clear effect which is in pleasing contrast with the frosted body. This idea is carried out also on the bowls which are shown in four different shapes. It might be mentioned here that these bowls are particularly adapted to the Cambridge figure flower holder which is so well known and has become so popular." The photo accompanying this article showed the #1252-10" Vase and the #1255-15" Bowl.

From one of their articles entitled "Touch of History" by Jack & Sue Rettig (C.B. #44, pg. 12), we acquired the additional information that these "Springtime" vases were also made in the colors of "Jade, Rose-DuBarry, Mystic and other satin finish effects," and that the Console sets could be had in "various colors including Jade, Cinnammon, Krystal, Rose-DuBarry and Mystic." It is the considered opinion of many that these fancy color names were applied to the rather plain colors when they were given the satin finish treatment, i.e. light emerald green (Jade), amber (Cinnammon), crystal (Krystal), peachblow (Rose-DuBarry), and willow blue (Mystic).

In studying the pages of the NCC 1930-34 Catalog Reprint it becomes fairly easy to piece together the history of this Everglade line. Starting with page 31-8, we find the Candlesticks, Candelabra and Vases which we find later on page 33-22 being called "Leaf Line." Still later on page 33-36 we find these same Candlesticks being referred to as "Everglade." In the May 1933 issue of *China, Glass and Lamps* we found an article containing a photo of the #1 Bowl and #3 Candelabrum (pg. 33-26) and the following narrative. "This leaf bowl and two-way candelabra are shown by the Cambridge Glass Co. The bowl is one of the newest numbers brought out by the firm, and was designed to match the candelabra, which were brought out some time ago. The sets are in crystal, amber, forest green, willow blue, and carmen (ruby)."

Later in 1933, the October issue of *China, Glass and Lamps* contained an article complete with photo of the #26 Sugar and Cream, #24 Sherbet and #25-8" Plate (see pg. 33-25 of the NCC Reprint). The article read as follows: "One of the new lines to be brought out this Fall by the Cambridge Glass Co. is their Everglades. The few pieces of this which we illustrate will give an idea of its attractiveness. In addition to the items pictured

LADIES' HOME JOURNAL

December, 1944



CAMBRIDGE *Presents*
ARCADIA

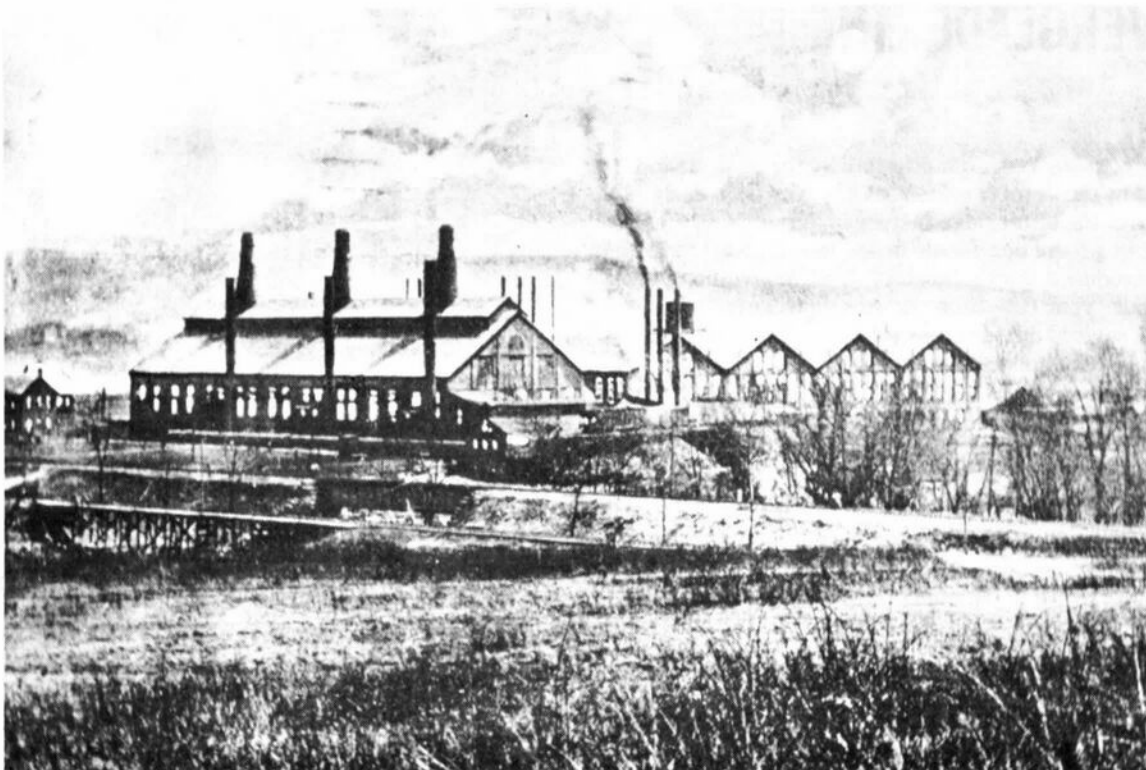
Leaves of Ice Crystal
Engrave Their Beauty on New and
Lovely Shapes . . . Arcadia combines
freshness and originality of form with an
entirely new decorative treatment of
finely engraved leaf patterns which give
matchless sheen and brilliance to the
crystal. More than 50 open-stock pieces,
at prices genuinely modest. If your fa-
vorite store is temporarily out of an item,
please make allowances for wartime.
The Cambridge Glass Co.,
Cambridge, Ohio.

Cambridge
HAND-MADE CRYSTAL

this line also consists of three or four types of candlesticks, high, low and double candelabra, various bowls of different types and shapes, and four different types of vases. It is to be had in colors of crystal, Eleanor blue, Forest green and amber with a few pieces made in Carmen (ruby).

It should be mentioned here that the color Eleanor blue is evidently a light blue. In the September 1979 (Issue #77) of the *Crystal Ball*, pg. 6, David B. Rankin wrote in great detail concerning "Cambridge Blues." In one paragraph he stated that "Very recently we located an undated Cambridge document confirming that Eleanor Blue is a valid name and is a light blue. Although it was not dated, other information in the document is consistent with the 1933 time frame. Without confirmation of the validity of the *China, Glass and Lamps* article, until recently, no real research has been performed to discover a means of identifying Eleanor Blue."

To be continued in next *Crystal Ball* . . .



CAMBRIDGE GLASS CO. POSTCARD

by

Dr. James S. Measell

A few years ago, I began to collect glass factory postcards as a supplement to my glass collecting interests. The postcards gave me something else to look through at shows and shops, and, to make a long story short, I have been able to assemble a sizable collection of postcards which depict glass factory scenes of one kind or another.

The card shown here is postmarked from Cambridge, Ohio, at 6:30 P.M., December 3, 1913. It's addressed to Miss Vera Biggs, Greene, New York, but there is no written message except for an indecipherable squiggle about an inch long. Maybe Miss Biggs had a "friend" at Cambridge who communicated via code! In any case, the picture side of this card will be of some interest to Cambridge glass collectors.

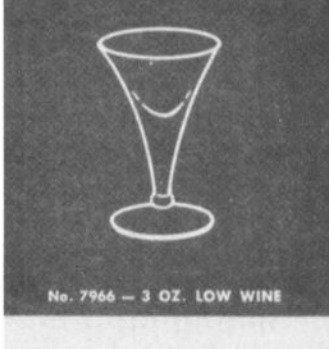
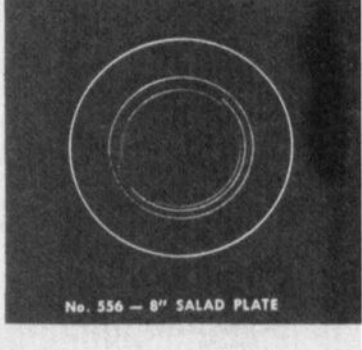
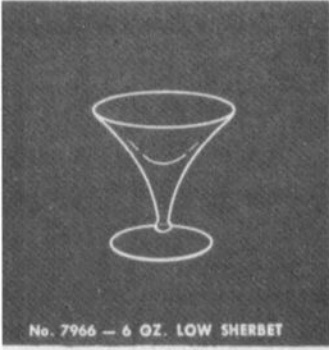
The view of the factory is typical of picture postcards, showing the plant nestled among the rolling hills of Southern Ohio. Although the caption says "by night," this colored card has a rather bright green foreground and the red bricks of the factory buildings are easily seen. A rosy hue is seen just above the hills, and gray clouds frame the pale yellow moon. Virtually all of the factory windows are vivid orange. This all makes for a potentially striking night scene, for it conjures up images of bustling workmen busily at their trade through the wee hours. An interesting thought, perhaps, is kindled by this card, but the picture is somewhat false, for this postcard is actually a black and white photocard which has been cleverly altered.

The period from about 1889 to the start of World War I is the so-called "postcard era" in America. Countless thousands of "views," ranging from covered bridges to sanitariums, are preserved on postcards. Since glass factories were often of great economic importance to their towns, it is not surprising to find postcards depicting them. I have about four dozen outside views of glass factories similar to this Cambridge Glass Co. postcard, including the Fry plant in Rochester, PA, and the National (now

Rodefer-Gleason) in Bellaire. Black and white photocards are rather sought after, usually because they were produced in fewer numbers than were the colored cards. Especially nice are interior scenes, including those which show the workers caught by the candid camera rather than in awkward poses. Many of the original photos in Bill Heacock's Fenton Glass: The First Twenty-five Years, for example, are taken from postcards which survive today.

As I learned more and more about postcards and the various printing processes which produced them, I continued to examine my glass factory postcards. That's when this Cambridge card began to raise some questions in my mind. If it's "by night," why are the weeds bright green and the red bricks clearly visible? Why are all of the windows vivid orange, including those in the house on the left? Unless the place is on fire, one should expect the brightest orange only in those areas where molten glass is being worked, not in the packing rooms and storage areas away from the central furnaces!! Most curious of all, why are there shadows on the roof?

The answers to these questions and others are explained in a fascinating book about postcards, George and Dorothy Miller's Picture Postcards in the United States, 1893-1918. They explain that many German-printed cards were retouched by such tricks as adding people or vehicles, changing street signs or turning day into night by adding a moon to a daytime photograph. The haste to get cards into production often led to rather strange mistakes, such as signs written in German in American cities and inexplicable colors and shadows in so-called "at night" scenes. Sure enough, this Cambridge Glass Co. postcard was printed in Germany, using the "Newvochrome" process. The publisher was Brooks Sutton of Cambridge, Ohio, who sent their black and white photos to Germany via New York to have them turned into attractive color postcards. If you have any glass factory postcards, I'd be pleased to hear from you; write to me at Box 1052, Berkley, MI, 48072.



Trumpet



THE CAMBRIDGE GLASS COMPANY, CAMBRIDGE, OHIO, U.S.A.



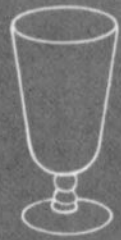
No. 3700 — 6 OZ. LOW SHERBET



No. 3700
4 1/2 OZ. OYSTER COCKTAIL



No. 3700 — 2 1/2 OZ. WINE



No. 3700
12 OZ. FOOTED ICE TEA



No. 3700 — 9 OZ. GOBLET



No. 3700 — 4 1/2 OZ. CLARET



No. 3700 — 3 OZ. COCKTAIL



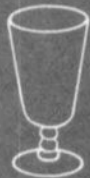
No. 3700 — 1 OZ. CORDIAL



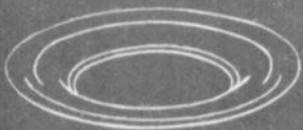
No. 3700 — 6 OZ. TALL SHERBET



No. 3700
10 OZ. FOOTED TUMBLER



No. 3700
5 OZ. FOOTED TUMBLER



No. 555 — 7 1/2" SALAD PLATE



No. 556 — 8" SALAD PLATE

Dunkirk

No. 3700



THE CAMBRIDGE GLASS COMPANY, CAMBRIDGE, OHIO, U. S. A.

3121 Line



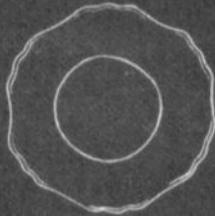
No. 3121 — 2½ OZ. WINE



No. 3121
5 OZ. FOOTED TUMBLER



No. 3121 — 10 OZ. GOBLET



No. 3400/176
7½" SALAD PLATE



No. 3121 — 4½ OZ. CLARET



No. 3121 — 6 OZ. TALL SHERBET



No. 3121 — 6 OZ. LOW SHERBET



No. 3121
10 OZ. FOOTED TUMBLER



No. 3121
4½ OZ. OYSTER COCKTAIL



No. 3121 — COMPOTE



No. 3121 — 3 OZ. COCKTAIL



No. 3121 — 10 OZ. GOBLET



No. 3121 — 1 OZ. CORDIAL



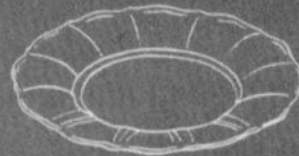
No. 3121 — 5 OZ. CAFE PARFAIT



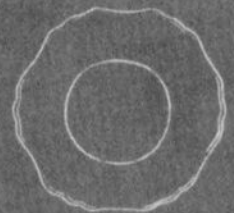
No. 3121 — 2½ OZ. LOW WINE



No. 3121
12 OZ. FOOTED ICE TEA



No. 3900/22
8" SALAD PLATE



No. 3400/62
8½" SALAD PLATE

3139 Line



No. 3139 — 10 OZ. GOBLET



No. 3139 — 7 OZ. TALL SHERBET



No. 3139 — 12 OZ. FTD. ICE TEA



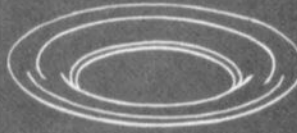
No. 3139 — 5 OZ. FTD. TUMBLER



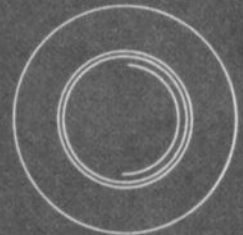
No. 3139 — 4½ OZ. CLARET



No. 3139 — 2½ OZ. SHERRY WINE



No. 555 — 7½" PLATE



No. 556 — 8" PLATE



No. 3139 — 2½ OZ. COCKTAIL



No. 3139 — 4½ OZ. OYSTER COCKTAIL



No. 3139 — 1 OZ. CORDIAL



No. 3139 — GOBLET



THE CAMBRIDGE GLASS COMPANY, CAMBRIDGE, OHIO, U. S. A.

**STUDY GROUP #2 - EASTERN OHIO
"THE CAMBRIDGE SQUARES"**

The Cambridge Square Study Group met August 29th, 1981 at the home of Jo and Gerald Barstow. There were eight members and four guests present.

Plans were discussed for the upcoming special exhibit to be held at the Degenhart Museum. Members listed colors and pieces of Cambridge Glass they could loan for the display.

Everyone enjoyed looking at the two beautiful glass showcases Gerald built for their Cambridge Glass. Jo's carmen collection, her smoker's items, and flower figurals made a gorgeous display. However, as every NCC member knows, just as you feel you have adequate display room, your compulsion to own Cambridge Glass soon fills every available space.

Show and Tell featured a Rosepoint pulled stem cordial, a milk glass 4" shell ashtray with Charleton decoration, and a rooster muddler purchased for 25¢ at a yard sale.

Program and refreshments were provided by the host and hostess. The next meeting will be held at the home of Janice and Larry Hughes. The topic will be on swans and reproductions of them.

submitted by Meg Turner, Secretary

**STUDY GROUP #6 - NEW YORK STATE
"THE FINGERLAKES"**

The Fingerlakes Study Group met at the home of Bob and Marcia Ellis at noon on July 26th, 1981. Our Rome, New York member drove into Syracuse to meet with the Ladouceurs, and from there they all made the trek together.

Sandy O'Donnell was in charge of our program for this meeting and did a very fine report on the exacting art of engraving glass. The three methods of engraving (diamond, copper wheel and electric hand drill) were discussed in detail. It was later decided that this was of enough interest that we will delve deeper into the subject at another meeting.

Several examples of rock crystal engraving and one of needle etching were provided by the members for examination.

Refreshments were served, and our next meeting will be held on August 30th, 1981 at noon in Syracuse, New York at the home of Don and Shirley Ladouceur. Our host and hostess will also provide the program on Stems.

submitted by Marcia Ellis

— Classified —

WANTED: CAMBRIDGE ROYAL BLUE - Anything - but love Nude Stem items. If you see Cobalt - think COBALT CAROL Markowski, 3141 West Platte Ave., Colorado Springs, CO 80904.

BUYING: CAMBRIDGE ROSEPOINT; Depression Glass; Heisey Rose and Orchid; and Fostoria etched dinnerware. Also glass figures and unusual pieces. Nadine Pankow, 207 S. Oakwood, Willow Springs, IL 60480. Phone: 312/839-5231.

COPIES OF NCC BY-LAWS AVAILABLE

If you would like a copy of the NCC By-Laws, you may make your request by writing to the NCC address and enclosing a Large SASE (18¢).



**A SPECIAL
CHRISTMAS GIFT**

Have you been looking for a special Christmas gift for a special glass-collecting friend? If so, why not give them one that will last all year ... Membership in NCC.

A special Christmas card, with membership card enclosed, will be sent in your name (to arrive shortly before Christmas) and their membership will begin with the January 1982 issue of the *Crystal Ball*.

Please send your request for this very special Christmas gift to us at the NCC address as soon as possible. Be sure to include your friend's name and address and \$10 for each member (\$3 for associates living in the same house) and the message you want signed on the Christmas card.

Naturally, you will be given credit for these new members in our Membership Contest.

Phyllis Smith, Membership Chairman

STAGE COACH ANTIQUE MALL

(formerly White Pillars Antiques)

7525 East Pike
Norwich, OH 43767
614/872-3720

MANY DEALERS

PLENTY OF PARKING

**WIDE SELECTION OF GLASS
AND POTTERY
FURNITURE AND
GENERAL LINE!**

BUY ----- SELL ----- TRADE

OPEN YEAR ROUND

Weekdays - 10 AM - 5:30 PM

Sunday - 12 noon - 5:30 PM

Summer Evening Hours - by Chancel

Located 9 miles E. of Zanesville, OH, on I-70 to Norwich
Exit #164 - then 1/2 mile W. on Route 40.

**1979
COMMEMORATIVE
SCOTTY DOG BOOKEND
(BLACK SATIN)**



#1128
SCOTTY DOG

A limited number of 1979 Commemorative Scotty Dog Bookends are available as supplies last.

The Bookend was produced for the National Cambridge Collectors, Inc. by the Lenox-Imperial Glass Company from the old No. 1128 Cambridge Glass Company mold.

Each is marked "N.C.C., 1979 L.I.G." Price is \$30.00 each. Ohio residents add \$1.35 sales tax. Plus \$3.00 each shipping and handling charge.

Make checks or money orders payable to: National Cambridge Collectors, Inc.,

National Cambridge Collectors, Inc.

P. O. Box 416,

Cambridge, Ohio

43725



FOR SALE

by **CAMBRIDGE BUFFS STUDY GROUP**

National Cambridge Collectors Lapel Pins

**&
Tie Tacs - - Black & Gold
\$3 each or \$5 for two - postpaid**

**Booklets of Articles on Past & Present
Cambridge Glass Industry
\$1.25 each - postpaid**

**ORDER FROM: Cambridge Buffs Study Group
c/o P. O. Box 248
Cambridge, Ohio 43725**

Proceeds for MUSEUM Acquisitions

**Great Christmas Gifts & Stocking Stuffers
for
Cambridge Collectors**

*Glass Industry
In Cambridge
Still Much Alive*



By Marlyns Victor

(Copyright of articles by her in The Daily Jeffersonian)

Glass Museums
Big Attractions



BOOKS FOR SALE

All of the available reference books relating to Cambridge glass can be ordered directly from the Club.

Address your orders for any of the following to:

BOOKS

National Cambridge Collectors, Inc.
P.O. Box 416
Cambridge, Ohio 43725

Please add \$1.00 (P & I) on each book order.
(Not required for Price List only orders)

Ohio residents please add 4½% State Sales Tax.

★
by National Cambridge Collectors, Inc.

1956-1958 CAMBRIDGE GLASS CO. CATALOG REPRINT
(164 page reprint of original catalog)
Paperback \$6.95

1949-1953 CAMBRIDGE GLASS CO. CATALOG REPRINT
(300 page reprint of original catalog)
Hardbound with Price Guide \$14.95

1930-1934 CAMBRIDGE GLASS CO. CATALOG REPRINT
(250 page reprint of original catalog)
Hardbound with Price Guide \$14.95

1978 PRICE GUIDE
for 1930-1934 catalog reprint \$2.00

★
by Mary, Lyle, and Lynn Welker

CAMBRIDGE GLASS CO.
(120 pages of reprint from 8 old catalogs) \$6.95

CAMBRIDGE GLASS CO. BOOK II
(119 pages of reprint from old catalogs) \$6.95

CAMBRIDGE, OHIO GLASS IN COLOR II
(15 color plates w/descriptions and notes) \$5.95

★
by Harold and Judy Bennett

THE CAMBRIDGE GLASS BOOK
(96 pages with 40 color plates) Paperback \$7.50

1903 CAMBRIDGE GLASS CO. CATALOG REPRINT
(106 page reprint of an original catalog) \$7.50

★
by Charles and Mary Alice Upton

1979 PRICE GUIDE to the CAMBRIDGE GLASS BOOK
(Prices for each item in Bennett book) \$2.00

★ ★

LYNN WELKER

2 East Main, New Concord, OH 43762
Phone (614) 826-4418

FOR SALE

- No. 3011 Nude stemware:
- Gold Krystol goblet, optic bowl (2) \$65.00
 - Gold Krystol claret, optic bowl (2)..... 55.00
 - Forest Green claret 55.00
 - Forest Green brandy 60.00
 - Amber cocktail 55.00
 - Amethyst wine, rare..... 65.00
 - Crystal claret 55.00
- Swans: 3½" Crown Tuscan, Style III..... 25.00
3½" Gold Krystol, Style II..... 35.00
4½" Milk Glass, Style III..... 55.00
3½" Crown Tuscan, Style II, signed ... 65.00
- Cat bottle, 7½" Peachblo 20.00
- Ivy ball, No. 1066 all Mandarin Gold ball,
foot and stem, rare 50.00
- Tally-Ho Carmen 14 oz. mugs, No. 1402/36,
applied crystal handle (4)..... 20.00
- No. 299 candy box & cover, Carmen rose knob . 30.00
- Farberware filigree amber 14½" decanter ... 35.00
- No. 1380 decanter, etched Bourbon, cornstalks 35.00
- Cobalt No. 3122 wines, tall stem (4) 20.00
- Nearcut Buzz Saw 5½" berry bowls, sgd (6) ... 5.00
- No. 3400-4 ftd 6" candy, Sterling grapes..... 25.00
- Cascade 5 oz. ftd. tumbler (11) 5.00
- Cambridge Square No. 3797-5 oz. juice (4) 10.00
- Caprice amber (Mocha) 8½" plates (3) 10.00
- Mt. Vernon: Coasters (4) 4.00 Round salts (8) .. 3.00
- Epergne No. 663: base, arm, & 2 vases 50.00
- Achilles cut 11" large vase, beautiful 50.00
- Cambridge Rose (cut) tall sherbets (3) 8.00
- Laurel Wreath (rock crystal cut) No. 3700:
- Goblets (6) 12.00 Cocktails (4) 12.00
 - 5 oz. ftd (5) 10.00 Tall sherbs (3) 10.00
 - 7½" plates (6) 8.00
- Appleblossom Peachblo 8½" plates (9) 8.00
- Appleblossom Apple Green No. 3400/8 - 11½" plate..... 16.00
- Cleo 12½" plate blue Decagon meat platter ... 25.00
- Candlelight 6" - 4 ftd. mayo or jelly 18.00
- Chantilly No. 3600 tall sherbets (6) 15.00
- Chantilly No. 3600 low sherbets (4) 13.00
- Chantilly No. 123-8½" plates (3) 10.00
- Chantilly oil/vinegar, Sterling base, stop..... 65.00
- Wildflower No. 3121 cocktails (7)..... 18.00
- Wildflower 5¼" - 12 oz. flat tumblers (3) 16.00
- 1950's original Cambridge catalog, 160 pp. 50.00
- Write or phone: Cut hat, Nearcut mini lamp.

Large stock: Rosepoint, Crystal Caprice, Today stemware, Cordials, Candelabra & Camb. Arms parts.

POSTAGE EXTRA - Excess Refunded. Return Privilege. Prices Each.

ALL GUARANTEED CAMBRIDGE & OLD

EVELYN M. ALLEN

135 Cynthia Street
Heath, Ohio 43055
Phone (614) 522-1635

REF: NCC CLUB BOOK:

1. Page 45	Keg set, light green.....	\$135.00	
2. Page 53	No. 647 Green satin finish candlesticks, pair	65.00	
3. Page 53	No. 647 Windsor Blue candlesticks, pair	175.00	
4. Page 75	Gloria cream and sugar	45.00	
5. Page 75	Gloria square dinner plates, have 6	27.00	each
6. Page 76	Gloria butter dish and cover.....	65.00	
7. Page 31-15	1305-10" Gloria vase, crystal ft. - dk. green top	95.00	
8. Page 31-24	Mt. Vernon cream and sugar, carmen	67.00	
9. Page 31-24	Mt. Vernon 1 lb. candy jar and cover, carmen.....	95.00	
10. Page 32-24	Martha Washington dk. green luncheon plates	7.00	each
11. Page 33-30	No. 1240 12" Gold Portia etch bowl, very little rim wear	150.00	
12. Page 33-31	No. 1298 13" gold Chintz Crown Tuscan vase, signed.....	210.00	
13. Page 33-31	No. 1238 12" gold Chintz Crown Tuscan vase, signed.....	175.00	

REF: WELKER BK. 1:

14. Page 16	No. 3900/575 10" Cornucopia vase, ebony.....	70.00	
15. Page 33	No. 1119 Eagle book-ends, pair	135.00	
16. Page 35	No. 1115 Figure flower holder, crystal.....	150.00	
17. Page 47	No. 46 Windsor blue shell flower holder.....	145.00	
18. Page 59	No. 3900/72 Daffodil etch 2 lite candlesticks, pair	50.00	
19. No. 3900	Elaine etched dinner plates, have 5.....	34.00	each
20. No. 3900	Elaine etched cups and saucer, have 8.....	30.00	set
21.	Elaine etched barrel tumblers, gold band on rim.....	Have 6 for 100.00	
22.	Elaine etched ramshead candy dish and cover	75.00	
23.	Elaine etched Gadroon cream and sugar	45.00	
24.	3" mandarin gold swan, signed	32.00	
25.	Azurite Ramshead console set	385.00	
26.	Amber 3 oz. Nude Cocktail	80.00	
27.	Mandarin Gold 3 oz. Nude cocktail	65.00	
28.	Amethyst 3 oz. Nude cocktail	65.00	
29.	Dk. green 3 oz. Nude cocktail	65.00	
30.	Moonlight blue 3 oz. Nude cocktail	105.00	
31.	Royal blue 3 oz. Nude cocktail	85.00	
32.	Light pink 1 oz. Nude brandy	75.00	
33.	Crown Tuscan tall Nude comport, shell top.....	125.00	
34.	No. 3121 long stem Rosepoint water goblets, have 6	25.00	each
35.	No. 3121 Rosepoint champagnes, have 8	21.00	each
36.	No. 3121 5 oz. Rosepoint juice or water glasses, have 10	27.50	each
37.	No. 3500 Rosepoint cups and saucers, have 7	30.00	set
38.	No. 3500 Rosepoint cups, no saucers, have 4	20.00	each
39.	No. 3900/120 12" Rosepoint 5 part relish	85.00	
40.	3900/39 Cream and sugar, Rosepoint	42.00	
41.	3900/26 Rosepoint 12" 4 ftd. plate.....	60.00	
42.	No. 3400/52 Rosepoint 5" butter and cover, signed	140.00	
43.	No. P293 Rosepoint 6 oz. oil with sterling stopper	95.00	
44.	Rosepoint Marmalade, lid, no spoon.....	65.00	
45.	No. 3900/120 12" Candlelite 5 part relish	75.00	
46.	No. 4000 Cascade cups and saucers, have 5	10.00	set
47.	No. 300 1 oz. crystal caprice cordial, have 5.....	28.00	each
48.	No. 3121 1 oz. cordials, Achilles cut, have 4	30.00	each
49.	No. 3500/15 Crystal individual cream and sugar	12.00	
50.	184 12 oz. Blue Caprice tumblers, have 8.....	30.00	each
	Light green Mt. Vernon base dolphin candleholders.....	pair 140.00	

ALL PIECES IN MINT CONDITION UNLESS OTHERWISE SPECIFIED.
POSTAGE AND INSURANCE EXTRA.

DEALERS



DIRECTORY

NOTE: When writing to the Dealers listed here, please enclose a SASE!

<p>EVELYN M. ALLEN 135 Cynthia Street Heath, Ohio 43055 Mail Order & Shows 614-522-1635 SPECIALIZING IN CAMBRIDGE GLASS!</p>	<p>BENICIA ANTIQUE SHOP 305 First Street Benicia, California 94510 OPEN 11 AM - 5 PM Closed Monday Z. E. LOPES 707-745-0978 VISIT HISTORIC BENICIA and its 28 shops Off Interstate #80 North of San Francisco</p>	<p>CHARLES MIKULIK Box 416 Elizabeth, N.J. 07207 — COLLECTOR — Always paying good prices for CAMBRIDGE CAPRICE in all colors 201-688-1144 CARRY MOST TYPES OF ANTIQUES</p>
<p>BLACK ROOSTER ANTIQUES 1018 Clark Street Cambridge, Ohio 43725 614-432-3202 M. Sipe CAMBRIDGE GLASS - GENERAL LINE</p>	<p>ANDREJCAK'S ANTIQUES 14533 Bayes Ave. Lakewood, Ohio 44107 Joe & Karen Andrejcek 216-226-3417 SHOWS ONLY — CAMBRIDGE — FENTON — CHINA</p>	<p><i>YOU CAN ADVERTISE YOUR ANTIQUÉ SHOP HERE!</i> 1 inch - \$6 for six months</p>
<p>BERKELEY ANTIQUES 69 Berkeley St. Boston, MA 02116 George or Frank 617-426-1048 CAMBRIDGE, HEISEY, GENERAL LINE</p>	<p>THE HITCHING POST 7467 S. R. 88 Ravenna, OH 44266 Ph. 216-296-3686 D. McDaniel CAMBRIDGE — HEISEY — GENERAL LINE</p>	<p>FINDER'S KEEPER'S ANTIQUES P.O. Box 303 P.O. Box 16023 Dayton, O. Columbus, O. 45401 43216 513-254-2937 614-885-2726 SPECIALIZING IN CAMBRIDGE GLASS!</p>
<p>D & D ANTIQUES Columbus, Ohio DICK SLIFKO SHOWS ONLY</p>	<p>GEORGE HOFFMÁN ANTIQUES 129 South 4th Street Newark, Ohio 43055 614-345-8021</p>	<p>'OUR GLASS ANTIQUES Box 27, Wills Point, Texas 75169 20th CENTURY COLLECTIBLES featuring CAMBRIDGE GLASS! Shows - No Lists - SASE Please PAUL & GINNY HENDERSON 214-873-4190</p>
<p>THE GLASS CUPBOARD 39 Shire Oaks Drive Pittsford, New York 14534 Marcia Ellis 716-586-7596 CAMBRIDGE ONLY SASE FOR LIST</p>	<p><i>YOU CAN ADVERTISE YOUR ANTIQUÉ SHOP HERE!</i> 1 inch - \$6 for six months</p>	<p>1886 HOUSE East Schodack, N.Y. 12063 MAIL and SHOWS Laurie Cruise 518-477-5895 CAMBRIDGE - NORITAKE - AZALEA - D.G.</p>
<p>KILPATRICK'S ANTIQUES Lu & Dort 400 W. 6th St., Bloomington, IN 47401 Res. 812/332-8754 Shop 812/339-1120 We buy one piece or collections</p>	<p>ROLLING ACRES ANTIQUES 66484 N. 8th Street Road Cambridge, Ohio 43725 Sandy Jenkins & Anne Ingram 614-432-2570 CAMBRIDGE & GENERAL LINE ANTIQUES</p>	<p>BILL & SHARON PHILLIPS 21730 Friday Euclid, Ohio 44123 Ph. 216-261-4665 Shows Only BUYING GLASS, ANTIQUES, ETC.</p>
<p>STAGE COACH ANTIQUE MALL 7525 (Rt. 40E) East Pike Norwich, Ohio 43767 SOMETHING FOR EVERYONE Open every day, year round — 614-872-3720</p>	<p>AL STEELE Westerville, Ohio 614-882-6483 or 614-882-7124 Mail Orders and Shows Only HEISEY — CAMBRIDGE — PATTERN GLASS</p>	<p>SWISS HILLS COLLECTIBLES 303 Guilford Ave., Woodsfield, OH 43793 Mary & Wilbur Henderson 614/472-1133 SPECIALIZING IN CAMBRIDGE GLASS Shows, Mail & Stagecoach Antique Mall</p>
<p>CHARLES A. SHAW Glenwood Gardens - R.V.W.1B Yonkers, NY 10701 AMERICAN GLASS — 914-476-5175 SHOWS & MAIL ORDER!</p>	<p>SHIRLEY S. LADOUCEUR Antiques and Collectibles Specializing in Cambridge Glass BY APPOINTMENT 7597 Daphne Drive 315-458-5297 No. Syracuse, NY 13212</p>	<p><i>YOU CAN ADVERTISE YOUR ANTIQUÉ SHOP HERE!</i> 1 inch - \$6 for six months</p>



A nonprofit organization dedicated to the preservation and study of Cambridge Glass

National Cambridge Collectors, Inc.

P. O. Box 416, CAMBRIDGE, OHIO 43725

You Are Cordially Invited
To Become A Member Of The
NATIONAL CAMBRIDGE COLLECTORS, INC.

Benefits derived from membership include: receipt of our club publication, The Cambridge CRYSTAL BALL; informative Quarterly Meetings; Antique Shows; Auctions; and other special events.

The Cambridge CRYSTAL BALL is published the first of each month. This newsletter contains educational and interesting articles, questions and answers, information on reproductions and reissues, notices of all club functions, classified advertisements, dealers directory, and many other features of interest to collectors of Cambridge Glass.

Yearly dues are \$10.00 for Individual Members and \$3.00 for each Associate Member. All members have voting rights, but only one issue of the CRYSTAL BALL will be mailed per household.

Name (please print) _____ \$10.00

Mailing Address _____

City _____ State _____ Zip _____

Associate Members: (Must be at least 12 years of age and living in the same household.)

1. Name _____
 2. Name _____
 3. Name _____
- Total number of Associate Members _____ @ \$3.00 each \$ _____

TOTAL AMOUNT ENCLOSED: \$ _____

Please make check payable to: NATIONAL CAMBRIDGE COLLECTORS, INC.

Recommended by _____

USE THIS APPLICATION -- NCC MEMBERSHIP MAKES A "GREAT GIFT"!

MARK YOUR CALENDAR

Quarterly Meeting
Nov. 7, 1981

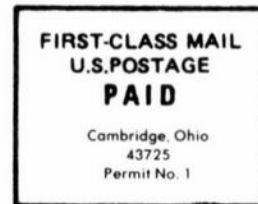
Quarterly Meeting
Feb. 26, 1982
All Cambridge Auction
Feb. 27, 1982

1982 Convention & Antique Show & Sale
June 25, 26, 27, 1982

All the above events will be held at the
Shenandoah Inn, Old Washington, Ohio

A Special Exhibit entitled CAM-
BRIDGE COLORS will be in place at
Degenhart Museum, Cambridge,
Ohio during October, 1981

National Cambridge Collectors, Inc.
P. O. Box 416 Cambridge, Ohio 43725



FIRST CLASS MAIL