

Cambridge Crystal Ball



ISSUE NO. 98

JUNE 1981

Published monthly by the NATIONAL CAMBRIDGE COLLECTORS, Inc.
To encourage and to report the discovery of the elegant and boundless product
of the Cambridge Glass Company, Cambridge, Ohio

I am looking forward to seeing as many of you as possible at the Convention and Antique Show! The normal Convention activities, especially the featured speakers, plus the glass making tours and the Flea Market, should give everyone a reason for wanting to attend.

Welcome To
CAMBRIDGE

6th Annual
**NATIONAL
CAMBRIDGE
COLLECTORS**

ANTIQUE SHOW & SALE
8th Annual Convention

Shenandoah Inn
P.O. Box 147, Old Washington, Ohio 43768
(Interstate 70 - Exit 186 - 7 Miles East of Cambridge, Ohio)
Phone - 614/489-5511

MEMBERSHIP RENEWAL NOTICE
If the date on your address label is - - **6 - 81**
This is your **LAST ISSUE** of the
CRYSTAL BALL. Please renew NOW!

JUNE 26, 27, 28, 1981

CAMBRIDGE CRYSTAL BALL

Official publication of National Cambridge Collectors, Inc., a non-profit corporation with tax exempt status. Published once a month for the benefit of its members.

Membership is available for individual members at \$10 per year and additional members (12 years of age and residing in the same household) at \$3 each. All members have voting rights, but only one *Crystal Ball* will be mailed per household.

Back issues of the *Crystal Ball* are available (beginning with Issue #1, May 1973) for members only. Cost: 60¢ each or 12 issues for \$7.

1980-81 OFFICERS & COMMITTEE CHAIRPERSONS

PRESIDENT	Willard Kolb
VICE-PRESIDENT	Josephine Barstow
SECRETARY	Janice Hughes
TREASURER	William Smith
SERGEANT-AT-ARMS	Don Armbrecht
ASSISTANT SECRETARY	Susan Rankin
BOOK SALES	Meg Turner
BUDGET & FINANCE	David Rankin
BY-LAWS	David Rankin
CONVENTION	Josephine Barstow
MEMBERSHIP	Josephine Barstow
MEMBERSHIP ASSISTANT	Brenda Harbaugh
MUSEUM	Billy Harbaugh
MUSEUM CURATOR	Charles Upton
PROGRAM & ENTERTAINMENT	Frank Wollenhaupt
PROJECT	Willard Kolb
PUBLIC RELATIONS	William Smith
PUBLICITY	Joseph Andrejcek
STUDY GROUP ADVISORY	Jack Rettig
1981 ALL-CAMBRIDGE AUCTION	Lynn Welker
1981 ANTIQUE SHOW	Charles Upton
CRYSTAL BALL EDITOR	Phyllis Smith

CLASSIFIED ADVERTISING RATES

5¢ per word \$1.00 minimum

We cannot mix type size in classified advertisements. Abbreviations and initials will count as words. Payment in full MUST accompany all ads.

DISPLAY ADVERTISING RATES

	Members	Non-Members
1/8 page	\$ 4.00	\$ 6.00
1/4 page	7.00	10.00
1/2 page	12.00	18.00
3/4 page	17.00	25.00
Full page	22.00	33.00

DEALERS DIRECTORY

1" ad (5 line maximum) \$6.00 for 6 months

Cambridge *Crystal Ball* assumes no responsibility for items advertised and will not be responsible for error in price, description or other information.

Advertising copy must be in our hands by the 10th of each month to assure publication in our next issue. Advertisements containing reproductions will not knowingly be accepted unless clearly stated.

PLEASE ADDRESS ALL CORRESPONDENCE TO

Cambridge Crystal Ball
National Cambridge Collectors, Inc.
P.O. Box 416
Cambridge, Ohio 43725

PLEASE NOTIFY US IMMEDIATELY OF ANY CHANGE IN YOUR ADDRESS!

Please enclose a self-addressed, stamped envelope when requesting information!!

STUDY Club News

STUDY GROUP #5 - SOUTHERN CALIFORNIA "CALIFORNIA CAMBRIDGE COLLECTORS"

The California Cambridge Collectors held their April meeting on April 17th at the home of Bill and Betty Losch.

There were twelve members in attendance. Bill Losch presented a discussion on the History of Cambridge glass which was very interesting.

We have noted that new "Cambridge" glass items are being sold at department stores in our area. A sticker from the new glass plus a magazine ad was passed around. So far we have no further information on this glass. It is made in the U.S. however.

The raffle prize was a crown tuscan plate with Charleton hand-painted decoration.

"Show & Tell" items were, an azurite candy dish; forest green ball jug; crown tuscan vase; and a blown rosepoint candy dish with cover.

submitted by Joan McDowell, Secretary

Editor's Note: It is believed that this new "Cambridge" glass is being sold by the Super Glass Company, the firm that purchased the old Cambridge Glass Company buildings in Cambridge, Ohio.

It would be appreciated if members from the California Study Group could bring the magazine ad, a piece of the glass including the sticker, etc., to the Convention for all to see and study. If other members have further information on this, please share it with us.

STUDY GROUP #7 - EASTERN OHIO "THE CAMBRIDGE BUFFS"

The Cambridge Buffs Study Group met the evening of April 14th, in the home of Dale and Peg Gotschall.

Twin sisters, Velva Vandenberg and Elva Volz, were guests for the meeting, and they related many of their experiences as workers in the decorating department of the Cambridge Glass Company. They began working at the glasshouse when they were 16 years of age. They explained the process of decorating pieces with white and yellow gold, platinum and silver. They told how they filled the gold into etchings on the ware, scraping off excess with a razor blade. Some gold was applied with a sponge, they said. They were very informative and everyone enjoyed listening to them, and having them as guests.

NCC President Willard Kolb was also present, and he announced that the Scotty Dog bookend would be made by the Imperial Glass Company in a black satin color. He also announced that plans are completed for the NCC Convention, Antique Show and Flea Market to be held in Old Washington, OH, the last weekend in June.

Displayed glass included 28 pieces of etched ware such as: a large fluted bowl with rosepoint etching in gold; a royal blue cocktail shaker with the hunt scene etched in silver; and several vases with hand painted decoration. "Show & Tell" items included: bluebell candleholders; wildflower etching on a coaster and sweet pea vase; and a helio everglades vase.

continued on page 13



No. 2575. A Stand
No. 1 Collar



No. 2575. A Stand
No. 2 Collar



No. 2575. B Stand
No. 2 Collar



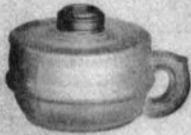
No. 2575. C Stand
No. 2 Collar



No. 2575. D Stand
No. 2 Collar



No. 2575. C Sewing
No. 2 Collar



No. 2575. O Flat, Hand
No. 1 Collar



No. 2575. O Footed
Hand
No. 1 Collar



No. 2575. B Footed
Hand, No. 2 Collar



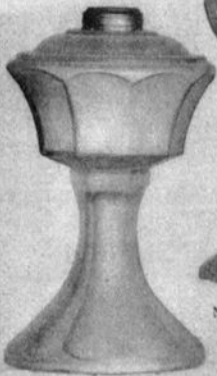
No. 2575. C Footed
Hand
No. 2 Collar



No. 2575. O O Stand
No. 1 Collar



No. 2575. O Stand
No. 1 Collar



No. 2581. D Stand
No. 2 Collar



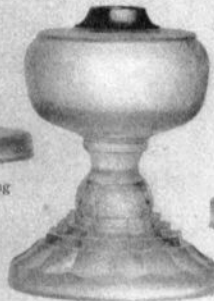
No. 2580. A Stand
No. 2 Collar



No. 516. C Sewing
No. 2 Collar



No. 2574. C Sewing
No. 2 Collar



No. 2566. C Sewing
No. 2 Collar



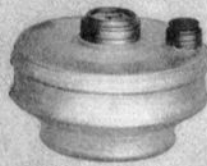
No. 497. C Stand
No. 2 Collar



No. 269. C Sewing
No. 2 Collar



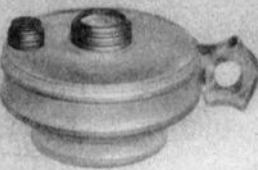
No. 2626. Fount
No. 2 Collar



No. 2625. Fount
No. 2 Collar



No. 2622. Fount
No. 2 Collar

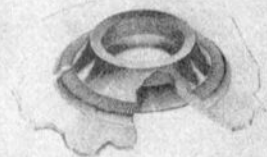


No. 2621. Hld. Fount
No. 2 Collar



No. 2572
C Sewing Lamp
No. 2 Collar

Clean PATENT COLLAR Safe Durable
Perfection in Lamp Construction



This is a full Double Collar with lock groove in the top or outer edge, and in the inner edge spun to the inside of the bowl, making the collar perfectly tight. Can not come loose or leak.

NO. 407



No. 7390, 10 oz.
Goblet



No. 7390, 5 oz.
Tall Footed
Sherbet



No. 7390, 5 oz.
Low Footed
Sherbet



No. 7390, 3 oz.
Wine



No. 8858, 5 oz.
Tumbler



No. 8858, 9 oz.
Table Tumbler



No. 8858, 12 oz.
Tumbler.

NO. 515



No. 3020, 10 oz.
Goblet



No. 3020, 6 oz.
Tall Ftd Sherbet



No. 3020, 6 1/2 oz.
Low Ftd Sherbet



No. 3020, 3 1/2 oz.
Cocktail



No. 3020, 3 oz.
Wine



No. 7810
Finger Bowl and Plate



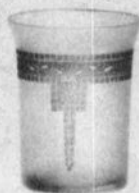
No. 3020, 5 oz.
Cafe Parfait



No. 1630, 3 1/2 oz.
Tumbler



No. 1630, 5 oz.
Tumbler



No. 1630, 10 oz.
Table Tumbler



No. 1630, 10 oz.
Tall Tumbler



No. 7606, 10 oz.
Tall Tumbler
Optic



No. 7606, 5 oz.
Tumbler
Optic



CLEO



No. 7606, 10 oz.
Goblet
Optic



No. 7606, 6 oz.
Tall Ftd Sherbet
Optic



No. 7606, 6 oz.
Fruit Salad
or Low Ftd Sherbet
Optic



No. 7606, 5 1/2 oz.
Cafe Parfait
Optic



No. 7606, 2 1/2 oz.
Wine
Optic



No. 7606, 12 oz.
Tumbler
Optic



No. 7606, 10 oz.
Table Tumbler
Optic

3011 FIGURE STEM LINE

by Janice Hughes
& Lynn Welker

ASH TRAY (3011)

The nude is 4-1/2"
(middle size nude)
The top width of ash tray is 3"
The length of ash tray is 1"
The overall height is 6-3/8"



CIGARETTE BOX (3011) (Short Stem)

The nude is 4-1/2"
(middle size nude)
The cigarette box is 3-1/8"
by 3-5/8"
The length of cigarette box is 2"
The overall height is 7-1/2"



CIGARETTE BOX (3011) (Tall Stem)

The nude is 6"
(largest size nude)
The cigarette box is 3-1/8"
by 3-5/8"
The length of cigarette box is 2"
The overall height is 9"



CIGARETTE HOLDER (3011)

The nude is 4-1/2"
(middle size nude)
The cigarette holder is 1-1/8"
by 2-7/8"
The length of cigarette
holder is 2-5/8"
The overall height is 7-1/2"
The ash tray foot on cigarette
holder is 3-5/8" across.



All of these are pictured in the NCC 1930-34 Catalog Reprint on page 34-2. The only identifying numbers listed are 3011.

The ash tray is known in carmen, royal blue, amber, forest green, gold krystol, amethyst, crystal, crown tuscan, and the later colors of moonlight blue, emerald green, mandarin gold, smoke, pink, and pistachio.

The short stem cigarette box is known in carmen, royal blue, amber, forest green, gold krystol, amethyst, crystal and crown tuscan.

The ashtray and short stem cigarette box was also made in crown tuscan with ebony foot.

The tall stem cigarette box was made in carmen, royal blue, amber, forest green, gold krystol, amethyst, crystal and crown tuscan. All of these are not known at this time.

The cigarette holder is known in carmen, royal blue, and crystal. It was **probably** made in amber, forest green, gold krystol and amethyst.

The short stem cigarette box, tall stem cigarette box and the cigarette holder were dropped from the line in the later catalogs after 1950.

The short stem cigarette box and the ash tray are known in crystal with cutting - crown tuscan gold encrusted Diane, Portia and Rose Point - gold encrusted silk screen lace pattern - carmen gold encrusted Portia.

The short stem cigarette box in crown tuscan is known decorated with black, turquoise and orange enamel line decoration. The ash tray may have been made to match but has not been seen. The crown tuscan items decorated may be found with the acid signature on the bottom.

The tall cigarette box and cigarette holder have not been seen decorated. Any of these crystal stem nude items may be found in the satin finish.

The cigarette holder and the tall stem cigarette box are the hardest to find, however, none of these are easy to find and all are popular with collectors.

None of these have been reproduced.

(Next month - Ivy Ball, Egg Vase and Mint Dish.)

STRANGE - BUT TRUE?

The following is taken from the February 5, 1914 issue of *Crockery & Glass Journal*. Believe it or Not!!

"Judging from their demonstrations, the lead blown tumblers of the Cambridge Glass Co. will stand some hard knocks without breaking. For sake of illustration, three tumblers were taken from the exhibit shelf, at the Ft. Pitt, thrown against the wall, a distance of forty feet, without a tumbler cracking."

PROJECTS

by Willard Kolb
Project Chairman

You will find your order blank for the Scotty Dog Bookend on the front of this issue of your *Crystal Ball*. You will find several differences in the ordering procedures as compared with the Lion Bookend.

The cost of producing the Scotty Dog increased significantly in comparison to the cost of the Lion. The rates for shipping by U.P.S. have increased twice since the Lion was produced, and we must incorporate the necessary evil of collecting Ohio State sales tax (unless the bookend is ordered and shipped out of the State of Ohio). Those of you who intend to pick yours up at Convention, must add the sales tax to your order blank. You will, however, be saving the \$3.00 charge for postage and handling.

We have held the advance order issue price to \$25.00 plus postage and handling and \$1.38 Ohio State sales tax, with a limit of one per member (master or assoc.). The price will increase to \$30.00, plus postage and handling, and \$1.65 sales tax, after June 25th, or the first day of our Convention. If you wish to pick your bookend up during the Convention, your order must **reach us** by June 20th so we will have time for processing. For those of you who are not going to pick yours up at Convention, but want to save the \$5.00 at the pre-Convention issue price, your order must be postmarked no later than June 25th.

We will not know the total number of Bookends that will be available until we take delivery, but it will be less than four hundred. Please try to get your order in as soon as possible to assure your getting one, and also it will greatly help the Project committee in processing the orders.

We are looking forward to seeing you at the Convention and, Oh Yes!, don't forget to bring that piece of glass for the Mini-Auction. When you bring it, give it to Joe Andrejcek in the Research Room along with your name and address.

FOR SALE

PERSONALIZED PAPERWEIGHTS



Just send your check or money order for \$35 for each paperweight, plus the name you wish to have included, to: N.C.C. Paperweight, P.O. Box 416, Cambridge, OH 43725.

EIGHTH ANNUAL CONVENTION

National Cambridge Collectors, Inc.

June 26, 27, 28, 1981

CONVENTION ACTIVITIES
will be held in the

SHENANDOAH INN

P.O. Box 147, Old Washington, Ohio 43768

(Interstate 70 - Exit 186 - 7 Miles East of Cambridge, Ohio)

Phone - 614/489-5511

SCHEDULE OF EVENTS

FRIDAY, June 26th

- 1:00 PM - 4:00 PM REGISTRATION - Room 101
(ALL Convention Participants
-MUST BE REGISTERED!)
- 1:15 PM - GLASS FACTORY TOURS
-Meet at Shenandoah Inn
(Mosser & Boyd's Crystal Art Glass)
- 6:00 PM - 9:00 PM ANTIQUE SHOW & SALE
PREVIEW - Main Ballroom
DISPLAY ROOM OPEN -
Room 100
- 9:30 PM - GET ACQUAINTED PARTY
Banquet Room - Pay Bar
Mini-Auction

SATURDAY, June 27th

- 6:00 AM - 5:00 PM FLEA MARKET
Guernsey County Fair Grounds
- 8:00 AM - 10:30 AM REGISTRATION - Banquet Room
- 8:30 AM - 10:30 AM CONTINENTAL BREAKFAST
Banquet Room
Speaker - A. W. "Andy" Anderson
Topic - "Cambridge Arms Magic"
- 11:00 AM - 6:00 PM ANTIQUE SHOW & SALE
Main Ballroom
DISPLAY ROOM OPEN
Room 100
- 6:30 PM - 7:30 PM COCKTAIL HOUR - Pay Bar
Banquet Room
- 7:30 PM - ANNUAL CONVENTION
BANQUET - Banquet Room
Speakers - Dr. & Mrs. Jack (Mary)
Adams
Topic - "Cambridge Carnival Glass"

SUNDAY, June 28th

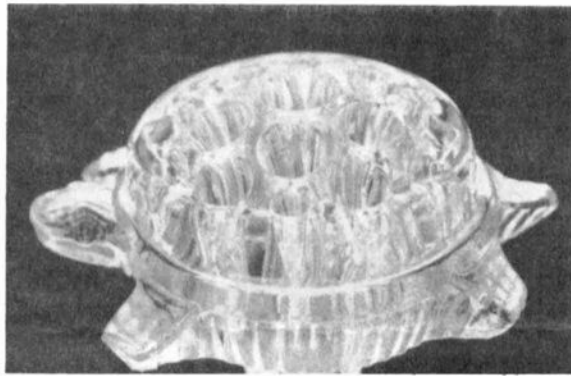
- 9:00 AM - BUFFET BREAKFAST
Banquet Room
Annual Business Meeting
"Show & Tell" (after meeting)
- 12 Noon - 6:00 PM ANTIQUE SHOW & SALE
Main Ballroom
- 12 Noon - 4:00 PM DISPLAY ROOM OPEN -
Room 100
- 4:00 PM - 6:00 PM DISPLAY ROOM WILL BE
CLOSED
(Please pick up Display Glass)

THE ELUSIVE TURTLE

by Phyllis Smith

The September 24, 1914 issue of *Crockery & Glass Journal* included the following quote, concerning the most elusive of all flower holders produced by the Cambridge Glass Company.

“The Cambridge Glass Company will undoubtedly have a good demand for the new flower holders which D. King Irwin (*Cambridge's New York representative*) has just placed on display. They include low, squat shaped bowls to be used in conjunction with a glass holder in the form of a turtle representing the reptile in the act of swimming through the water. Numerous round openings hold the flowers.”



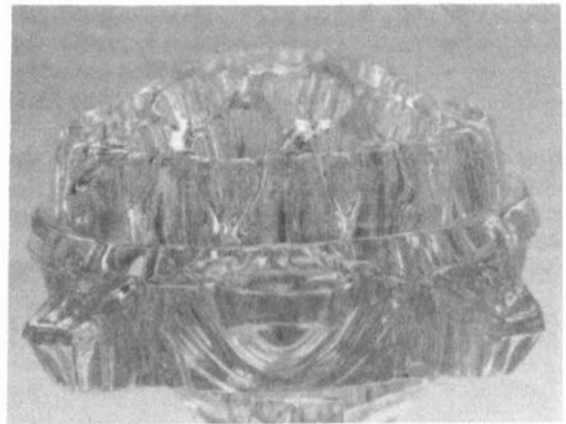
The elusive Turtle produced in 1914 by the Cambridge Glass Co.

Evidently the demand for these holders was not as great as the author of the above quotation had anticipated. Whatever the circumstances concerning the number of turtles produced, at least not many of them have survived over the years. Very few have surfaced as of this writing.

Several (probably less than you could count on your fingers and toes) have been found in the colors of ebony and crown tuscán. One or two have been found in crystal, and we have heard of one in dark green, having been found in California. It could be speculated that they were made in other Cambridge colors, but no other colors have been reported thus far. If you know of other colors, please let us hear from you.

They have been found in two slightly different styles. The difference being that one style has a humped back (as shown here) and the other style is quite flat on top. Otherwise they seem to be exactly the same.

The crystal fellow (or gal?) we are fortunate enough to have in our collection is really quite plump. He weighs just 3 oz. over 1 lb., and measures approximately 3-1/2" across his broad little belly. From the tip of his nose to the end of his tail, he is approximately 5-1/4" long. So you can see, he really is a large "hunk" of glass.



Seeing things "eye to eye" with a Turtle!

In case you can't find the low, squat shaped bowl as described above, to display your Turtle in, you can always put him beside your telephone and stick pencils in the holes in his back. That's the way he was being used when we found our's. Needless to say, he has received much more T.L.C. since he became a member of the Smith household!

MUSEUM PROGRESS

by Willard Kolb

At the present time plans have been made and approved by your Board of Directors to renovate the existing building located on the Club property (see star on front page for location) as an interim place to display Cambridge Glass. It was felt the Club needed such a place until our finances are such that we can build a permanent Museum.

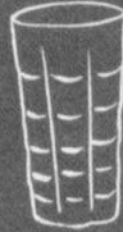
Our Museum Chairman, Bill Harbaugh, has done a good job of lining up some materials and labor to assure the cost of the project as a minimum, affordable endeavor. Anyone who may have some needed material, or would like to help with the work on the building, please contact Bill through the N.C.C. box number or call him at 614/439-6685.

We had hoped to be far enough along so we could have at least shown you some of the improvements during the Convention. This probably won't be possible now, and the responsibility for this failure will have to fall solely on the shoulders of "yours truly", in that I failed to pressure our tenant into vacating the building in time so that the work could begin. This, however, will have been taken care of by the time you read this.



Cascade

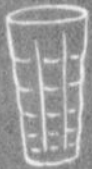
No. 4000



No. 14 - 12 OZ. TUMBLER



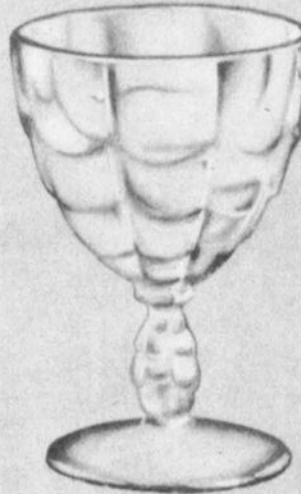
No. 2 - SHERBET



No. 15 - 5 OZ. TUMBLER



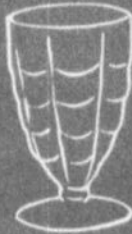
No. 4000/216 - 8" ASH TRAY



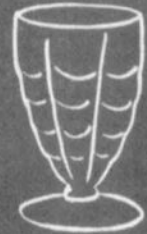
No. 1 - GOBLET



No. 3 - COCKTAIL



No. 9
12 OZ. FOOTED TUMBLER



No. 11
5 OZ. FOOTED TUMBLER



No. 22 - 8 1/2" SALAD PLATE



THE CAMBRIDGE GLASS COMPANY, CAMBRIDGE, OHIO, U. S. A.



No. 1066 — 7 OZ. TALL SHERBET



No. 1066
12 OZ. FOOTED ICE TEA



No. 1066 — GOBLET



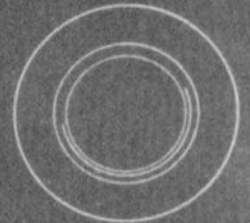
No. 1066
5 OZ. FOOTED TUMBLER



No. 1066 — 3 OZ. WINE



No. 1066 — 1 OZ. CORDIAL



No. 556 — 8" SALAD PLATE



No. 1066 — 4½ OZ. CLARET



No. 1066 — 3½ OZ. COCKTAIL



MANDARIN GOLD
EMERALD GREEN
AMBER
AMETHYST
CRYSTAL

Aurora



No. 3795 — CLARET



No. 3795 — SHERBET



No. 3795
12 OZ. FOOTED TUMBLER



No. 3795
5 OZ. FOOTED TUMBLER



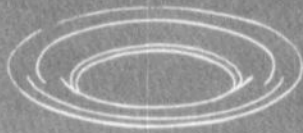
No. 3795 — COCKTAIL



No. 3795 — WINE



No. 3795 — CORDIAL



No. 556 — 8" SALAD PLATE

Allegro

No. 3795



No. 3795 — GOBLET



The next meeting will be held May 13th, in the home of Jim and Shirley Douglas.

submitted by Lena Barnes

**STUDY GROUP #8 - SOUTHERN MICHIGAN
"THE MICHIGAN CAPRICES"**

"Fun with Etchings" was the April program for the Michigan Caprices at the home of Robert and Betty Dasen. For example, take a good look at the Diane etching and using your imagination follow along: can you see "Miss Piggy" with a bobbed hair cut and huge flamboyant bow on her head? Look close for the eyes, flat nose, mouth and dimples.

The discussion was very lively and here are two more examples: Valencia etching - A bow on a graph paper design. Cleo etching - Upside down chandelier.

By using back issues of the *CRYSTAL BALL* and a display table of etched pieces belonging to the members, this turned out to be a most informative meeting.

Any interested members in this area call Betty Dasen (313)659-3243.

submitted by Betty Dasen

Editor's Note: The members of the Michigan Caprices Study Group have graciously accepted the responsibility of being "Greeters" at each of our Convention meetings.

You will have the opportunity of meeting and becoming better acquainted with them, during the following meetings:

- Friday "Get Acquainted" Party
..... Ray and Clara Brown
- Saturday & Sunday Breakfasts
..... Frank and Phyllis Hayes
- Saturday Banquet
..... Robert and Betty Dasen

— Classified —

WANTED: CAMBRIDGE ROYAL BLUE - Anything - but love Nude Stem items. If you see Cobalt - think COBALT CAROL Markowski, 3141 West Platte Ave., Colorado Springs, CO 80904.

BUYING: CAMBRIDGE ROSEPOINT; Depression Glass; Heisey Rose and Orchid; and Fostoria etched dinnerware. Also glass figures and unusual pieces. Nadine Pankow, 207 S. Oakwood, Willow Springs, IL 60480. Phone: 312/839-5231.

"Springtime"



1008-12" Vase



1251-8" Vase



1252-10" Vase



1250-6" Vase

CORRECTION: In the May 1981 *CRYSTAL BALL*, page 7, we gave credit to *Bill and Phyllis Hayes*, for helping to provide us with the Sears, Roebuck catalog pages. It should have read *Frank and Phyllis Hayes*. Do hope you will forgive us Frank!

L. ROBINSON
425 E. 82nd St. New York, NY 10028 - 212/988-4107 after 5 PM

CAMBRIDGE FOR SALE

Muddlers #1, crystal (4)	\$ 4.00
Ball Decanter, cordial 12 oz. size, amber, no stopper	8.00
#3400 Sugar, signed, forest green (wear)	5.00
Tally-Ho Sugar, forest green (3)	8.00
#138 Sugar, signed, lt. emerald green	6.00
#2862 Nearcut Candlestick, 7-1/2", crystal (base wear)	6.00
Pristine Sugar, reg. #138	4.00
Pristine Sugar, ind. #253 (2)	2.50
Pristine #212, 5-part Celery & Relish, 10"	6.00
Caprice, 10" Bowl, 4 ftd., crystal w/floral gold deposit	50.00

Prices Each! No Cracks or Chips! Postage Extra!

NATIONAL CAMBRIDGE COLLECTORS

FLEA MARKET

Saturday — June 27th
6 AM — 5 PM

GUERNSEY COUNTY FAIRGROUNDS

OLD WASHINGTON, OHIO

(one mile East of I-70, Exit #186, on Old U.S. 40)

DEALER SPACE AVIALABLE

For information or Contract write: Larry Hughes, Chrm., P.O. Box 416, Cambridge, OH 43725

STAGE COACH ANTIQUE MALL

(formerly White Pillars Antiques)

7525 East Pike
Norwich, OH 43767
614/872-3720

MANY DEALERS

PLENTY OF PARKING

WIDE SELECTION OF GLASS
AND POTTERY
FURNITURE AND
GENERAL LINE!

BUY ----- SELL ----- TRADE

OPEN YEAR ROUND
Weekdays - 10 AM - 5:30 PM
Sunday - 12 noon - 5:30 PM
Summer Evening Hours - by Chancel

Located 9 miles E. of Zanesville, OH, on I-70 to Norwich
Exit #164 - then 1/2 mile W. on Route 40.

Eleventh Annual Antique Show & Sale Heisey Glass Display

Newark Branch - O.S.U. Campus
Country Club Drive, Newark, Ohio



Sponsored by



Heisey Collectors of America, Inc.

★ Wednesday, June 17th

Champagne Preview 7:30 P.M. to 10P.M

Thursday, June 18th

12:00 Noon to 8:00 P.M

Friday, June 19th

12:00 Noon to 5:00 P.M

Saturday, June 20th

12:00 Noon to 8:00 P.M

Sunday, June 21st

12:00 Noon to 5:00 P.M

Benefit National Heisey Museum Over 50 quality dealers

Donation \$1.75

★ \$5.00 Donation

25¢ off with ad

DEALERS



DIRECTORY

NOTE: When writing to the Dealers listed here, please enclose a SASE!

<p>EVELYN M. ALLEN 135 Cynthia Street Heath, Ohio 43055 Mail Order & Shows 614-522-1635 SPECIALIZING IN CAMBRIDGE GLASS!</p>	<p>BENICIA ANTIQUE SHOP 305 First Street Benicia, California 94510 OPEN 11 AM - 5 PM Closed Monday Z. E. LOPES 707-745-0978 VISIT HISTORIC BENICIA and its 28 shops Off Interstate #80 North of San Francisco</p>	<p>CHARLES MIKULIK Box 416 Elizabeth, N.J. 07207 — COLLECTOR — Always paying good prices for CAMBRIDGE CAPRICE in all colors 201-688-1144 CARRY MOST TYPES OF ANTIQUES</p>
<p>BLACK ROOSTER ANTIQUES 1018 Clark Street Cambridge, Ohio 43725 614-432-3202 M. Sipe CAMBRIDGE GLASS - GENERAL LINE</p>	<p>ANDREJCAK'S ANTIQUES 14533 Bayes Ave. Lakewood, Ohio 44107 Joe & Karen Andrejcek 216-226-3417 SHOWS ONLY — CAMBRIDGE — FENTON — CHINA</p>	<p>COYLE & SCHUSTER ANTIQUES Box 982 - Ph. 614-349-7362 Newark, Ohio 43055 Shows & Mail Order BUY & SELL - CAMBRIDGE - HEISEY</p>
<p>BERKELEY ANTIQUES 69 Berkeley St. Boston, MA 02116 George or Frank 617-426-1048 CAMBRIDGE, HEISEY, GENERAL LINE</p>	<p>THE HITCHING POST 7467 S. R. 88 Ravenna, OH 44266 Ph. 216-296-3686 D. McDaniel CAMBRIDGE — HEISEY — GENERAL LINE</p>	<p>FINDER'S KEEPER'S ANTIQUES P.O. Box 303 Dayton, O. 45401 513-254-2937 P.O. Box 16023 Columbus, O. 43216 614-885-2726 SPECIALIZING IN CAMBRIDGE GLASS!</p>
<p>D & D ANTIQUES Columbus, Ohio DICK SLIFKO SHOWS ONLY</p>	<p>GEORGE HOFFMAN ANTIQUES 129 South 4th Street Newark, Ohio 43055 614-345-8021</p>	<p>'OUR GLASS ANTIQUES Box 27, Wills Point, Texas 75169 20th CENTURY COLLECTIBLES featuring CAMBRIDGE GLASS! Shows - No Lists - SASE Please PAUL & GINNY HENDERSON 214-563-6971</p>
<p>THE GLASS CUPBOARD 39 Shire Oaks Drive Pittsford, New York 14534 Marcia Ellis 716-586-7596 CAMBRIDGE ONLY SASE FOR LIST</p>	<p>THE KRAUSE'S 944 Jefferson Ave. Washington, PA 15301 John & Gail Krause 412-228-5033 SPECIALIZING IN DUNCAN MILLER GLASS</p>	<p>1886 HOUSE East Schodack, N.Y. 12063 MAIL and SHOWS Laurie Cruise 518-477-5895 CAMBRIDGE - NORITAKE - AZALEA - D.G.</p>
<p>LASHER ASSOCIATES 119 Water St. Gaithersburg, Md. 20760 Faith Lasher 301-977-8296 SPECIALIZING IN GLASSWARE</p>	<p>ROLLING ACRES ANTIQUES 66484 N. 8th Street Road Cambridge, Ohio 43725 Sandy Jenkins & Anne Ingram 614-432-2570 CAMBRIDGE & GENERAL LINE ANTIQUES</p>	<p>BILL & SHARON PHILLIPS 21730 Priddy Euclid, Ohio 44123 Ph. 216-261-4665 Shows Only BUYING GLASS, ANTIQUES, ETC.</p>
<p>STAGE COACH ANTIQUE MALL 7525 (Rt. 40E) East Pike Norwich, Ohio 43767 SOMETHING FOR EVERYONE Open every day, year round — 614-872-3720</p>	<p>AL STEELE Westerville, Ohio 614-882-6483 or 614-882-7124 Mail Orders and Shows Only HEISEY — CAMBRIDGE — PATTERN GLASS</p>	<p>SWISS HILLS COLLECTIBLES 303 Guilford Ave., Woodfield, OH 43793 Mary & Wilbur Henderson 614/472-1133 SPECIALIZING IN CAMBRIDGE GLASS Shows, Mail & Stagecoach Antique Mall</p>
<p>CHARLES A. SHAW Glenwood Gardens - R.V.W.1B Yonkers, NY 10701 AMERICAN GLASS — 914-476-5175 SHOWS & MAIL ORDER!</p>	<p>SHIRLEY S. LADOUCEUR Antiques and Collectibles Specializing in Cambridge Glass BY APPOINTMENT 7597 Daphne Drive 315-458-5297 No. Syracuse, NY 13212</p>	<p>GLASS MENAGERIE ANTIQUES Cambridge - General Line New Collectable Glass YVONNE L. GORDON Route #2 614-826-7140 New Concord, OH 43762</p>



ANTIQUE SHOW & SALE

(& 8th Annual NCC Convention)

SHERANDOAH INN

INTERSTATE 70 .. EXIT 199 .. 7 MILES EAST OF
CAMBRIDGE, OHIO

JUNE 26, 27, 28, 1981

FRIDAY, JUNE 26th	6:00 - 9:00
(PREVIEW)	
SATURDAY, JUNE 27th	11:00 - 6:00
SUNDAY, JUNE 28th	12:00 - 6:00
(ADMISSION \$1.75)	

OFFERING CAMBRIDGE AND OTHER FINE GLASSWARE
ALONG WITH A GENERAL TONK OF ANTIQUES
FOOD
DOOR PRIZES
PARKING

CONVENTION CHECK LIST!

- Advance Registration form -- must be postmarked by June 10th
- Ballots, please cast your vote -- must be returned by June 19th
- Scotty Dog order form -- must be returned by June 20th (if you pick it up at Convention) must be postmarked by June 25th (if you want it mailed)
- Pack glass you are donating to the Mini-Auction!
- Make reservations at the Shenandoah Inn -- 614/489-5511
- Pack your bags -- and plan to have a great time at the -----

**1981 NCC Convention, Antique Show,
and Flea Market!!
June 26, 27, 28, 1981**



National Cambridge Collectors, Inc.
P. O. Box 416
Cambridge, Ohio 48725

FIRST-CLASS MAIL
U.S. POSTAGE
PAID
So. Vienna, Ohio
45360
Permit No. 15

FIRST CLASS MAIL