

Cambridge



Crystal Ball

ISSUE NO. 94

FEBRUARY 1981

Published monthly by the NATIONAL CAMBRIDGE COLLECTORS, Inc.
To encourage and to report the discovery of the elegant and boundless product
of the Cambridge Glass Company, Cambridge, Ohio

Thoughts from the President---

I always thought people from the north went south in the winter to merely enjoy the warm climate. How Naive! I find that the real reason is that flea markets, shows and the availability of glass abound the year round in warmer climates.

You're a bunch of sly foxes, but I can't blame you for not wanting to trudge through knee deep snow at 5 below zero, drive from antique shop to antique shop on slippery, unplowed streets or go to flea markets and shows where the merchants didn't want to bring their "really good stuff" because the weather was bad and they didn't think many people would show up! And you can't blame the show and flea market dealers because they are probably right, unless the people are Cambridge Glass nuts. They'll even go by dog sled if they hear there's a piece of Cambridge glass available. I know of one nut that drives 140 miles round trip every Sunday morning, through rain, sleet or snow to a flea market and antique mall just because he thinks there may be Cambridge glass there. Well at least you meet a lot of fine people.

Things will change very shortly though. This is the first week of February and we only have a few more

weeks to put up with the ravages of Nature. What better way to begin the season of fleas, shows and auctions than to have the "All-Cambridge Glass Auction" on the first beautiful day of the year. (Take my word for it, don't pay heed to the weather man!) You people from the North can all get out for the first time this year, enjoy yourselves, and buy lots of glass that is guaranteed to be Cambridge. You people from the warm climates come on up too, you'll forget the not so warm weather when you see all the Cambridge for sale. Don't forget, the Quarterly Meeting is the eve of the 27th of February and the Auction is the 28th. Hope you've made your motel reservations.

It was good to see some new contributors to the *Crystal Ball*. I have high hopes that some day our Editor will have a stack of articles to sort through and use only so many each month. If your article takes three months to appear in the *Crystal Ball*, then we have a successful publication. You're all capable of writing articles, and again, your information may not seem important to you, but it could be very important to someone else.

Hope to see you all at the February Quarterly Meeting and Annual Auction. Even if you don't intend to buy, come anyway, you'll have fun and learn.

MEMBERSHIP RENEWAL NOTICE

If the date on your
address label is - -

2 - 81

This is your **LAST ISSUE** of the **CRYSTAL BALL**.

Please renew **NOW!**

CAMBRIDGE CRYSTAL BALL

Official publication of National Cambridge Collectors, Inc., a non-profit corporation with tax exempt status. Published once a month for the benefit of its members.

Membership is available for individual members at \$10 per year and additional members (12 years of age and residing in the same household) at \$3 each. All members have voting rights, but only one *Crystal Ball* will be mailed per household.

Back issues of the *Crystal Ball* are available (beginning with Issue #1, May 1973) for members only. Cost: 60¢ each or 12 issues for \$7.

1980-81 OFFICERS & COMMITTEE CHAIRPERSONS

PRESIDENT	Willard Kolb
VICE-PRESIDENT	Josephine Barstow
SECRETARY	Janice Hughes
TREASURER	William Smith
SERGEANT-AT-ARMS	Don Armbricht
ASSISTANT SECRETARY	Susan Rankin
BOOK SALES	Reba Embree
BUDGET & FINANCE	David Rankin
BY-LAWS	David Rankin
CONVENTION	Josephine Barstow
MEMBERSHIP	Josephine Barstow
MEMBERSHIP ASSISTANT	Brenda Harbaugh
MUSEUM	William Harbaugh
MUSEUM CURATOR	Charles Upton
PROGRAM & ENTERTAINMENT	Frank Wollenhaupt
PROJECT	Willard Kolb
PUBLIC RELATIONS	William Smith
PUBLICITY	Joseph Andrejcek
STUDY GROUP ADVISORY	Jack Rettig
1981 ALL-CAMBRIDGE AUCTION	Lynn Welker
1981 ANTIQUE SHOW	Charles Upton
CRYSTAL BALL EDITOR	Phyllis Smith

CLASSIFIED ADVERTISING RATES

5¢ per word \$1.00 minimum

We cannot mix type size in classified advertisements. Abbreviations and initials will count as words. Payment in full MUST accompany all ads.

DISPLAY ADVERTISING RATES

	Members	Non-Members
1/8 page	\$ 4.00	\$ 6.00
1/4 page	7.00	10.00
1/2 page	12.00	18.00
3/4 page	17.00	25.00
Full page	22.00	33.00

DEALERS DIRECTORY

1" ad (5 line maximum) \$6.00 for 6 months

Cambridge *Crystal Ball* assumes no responsibility for items advertised and will not be responsible for error in price, description or other information.

Advertising copy must be in our hands by the 10th of each month to assure publication in our next issue. Advertisements containing reproductions will not knowingly be accepted unless clearly stated.

PLEASE ADDRESS ALL CORRESPONDENCE TO

Cambridge Crystal Ball
National Cambridge Collectors, Inc.
P.O. Box 416
Cambridge, Ohio 43725

PLEASE NOTIFY US IMMEDIATELY OF ANY CHANGE IN YOUR ADDRESS!

Please enclose a self-addressed, stamped envelope when requesting information!!

STUDY Club News

STUDY GROUP #7 - EASTERN OHIO "THE CAMBRIDGE BUFFS"

The Cambridge Buffs Study Group held their Christmas meeting on December 12th, in the home of Dean and Pauline Westfall, Cambridge, OH.

This was a Christmas Party with an All-Cambridge Glass gift exchange among our members. Gifts exchanged, admired and discussed, included: Star candleholders; light emerald green #3300 goblets; carmen Tally-Ho goblet; ritz blue salt dip; Nearcut Daisy footed nappy; and a willow blue #3300 sherbet.

Karen and Larry Jones donated a narrow optic goblet that was auctioned off to Pauline Westfall for \$25. Charles and Mary Alice Upton donated a Feather Nearcut sherbet to be added to Museum items.

Next meeting is scheduled for January 7th, in the home of Charles and Mary Alice Upton.

submitted by Doris Isaacs

STUDY GROUP #8 - SOUTHERN MICHIGAN "THE MICHIGAN CAPRICES"

The Michigan Caprices met at the home of Robert and Betty Dasen on December 14 for a "Cambridge Christmas Festival of Lights". Thirty-five different styles and many colors of Cambridge candlesticks were placed on a bright red Christmas tree skirt, and when all were lighted it gave sparkling splendor.

All members contributed candlesticks and each person gave information on their own. Clara Brown summed it up when she said, "Boy, you sure can get carried away with candlesticks." The miniature Colonial pattern in clear crystal was a favorite.

Lunch was served on a peach blo #520 etched luncheon set.

A write-up of this meeting is being sent to the local paper, and we hope to find other Cambridge members for 1981.

submitted by Betty Dasen, Secretary

Photo from

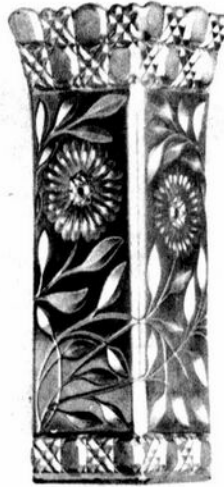
"Ladies
Home
Journal"

June
1949

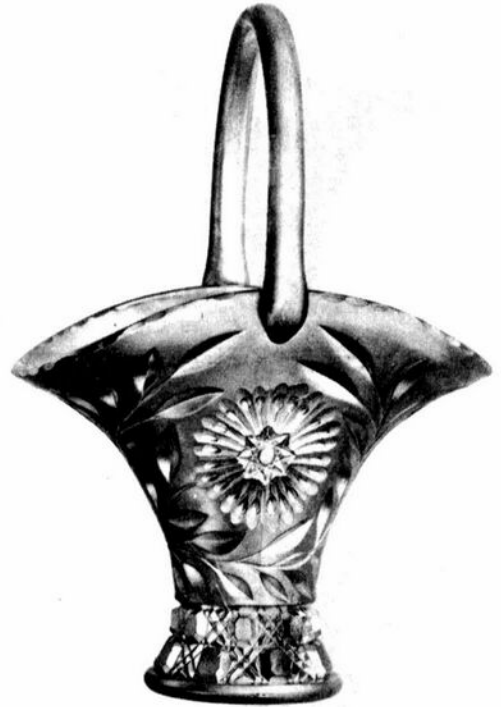




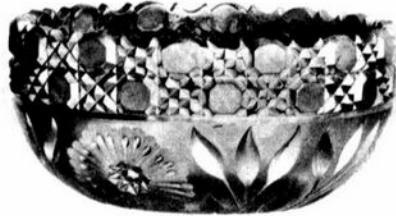
No. 426
8x9 Vase, Sweet Pea



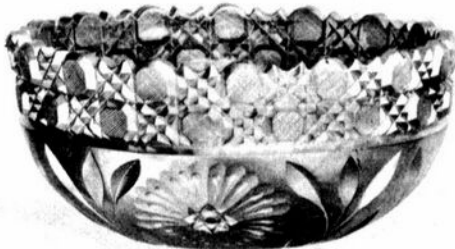
No. 429
10 and 12 inch Vase, Square



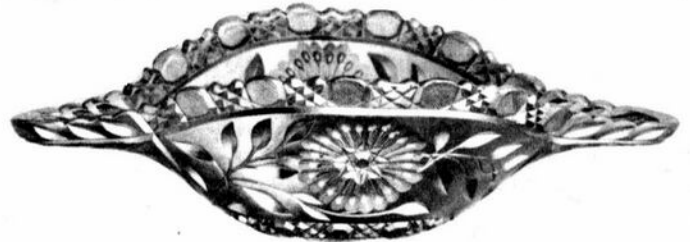
No. 42. 11 inch Basket



No. 62. 8 inch Bowl



No. 62. 9 inch Bowl



No. 308
Orange Bowl, Cocked Hat



No. 338
8 and 9 inch Punch Bowl and Foot



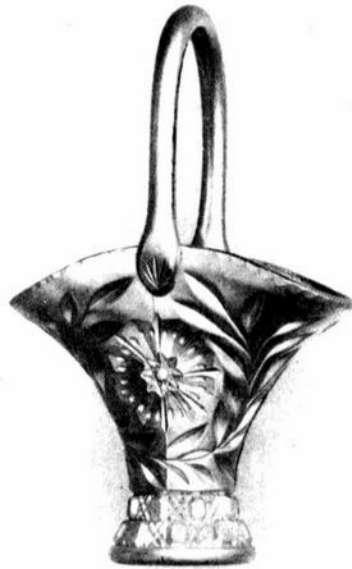
No. 111. 5 inch Comport



No. 309
Orange Bowl and Foot, Cocked Hat



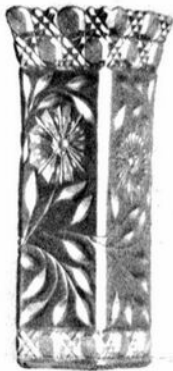
8x9 inch Sweet Pea Vase



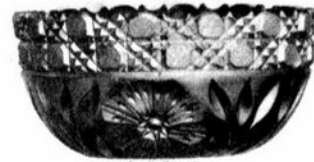
11 inch Basket



12 inch Square Vase



10 inch Square Vase



8 inch Bowl



5 inch Jelly Bowl



8 inch Bowl and Foot



Cocked Hat Orange Bowl



9 inch Bowl and Foot



9 inch Bowl



Cocked Hat Orange Bowl and Foot



3011 FIGURE STEM LINE

by Janice Hughes
& Lynn Welker

Continuing with our series of articles which began in last month's issue of the *Crystal Ball*, we would like to discuss the Wine, Cocktail, and Claret, as found on the Nude Figure Stem.

WINE (3011/12)

The nude is 4" (smallest nude made)
The top width of bowl is 2-1/2"
The overall height is 6-1/2"
It holds 2 oz. (the catalog states 3 oz.)



3011/12
3 oz. Wine

COCKTAIL (3011/9)

The nude is 4" (smallest nude made)
The top width of bowl is 2-3/4"
The bowl length is 2"
The overall height is 6-3/8"
It holds 3 oz.



3011/9
3 oz. Cocktail

CLARET (3011/7)

The nude is 4-3/4" (second size nude)
The top width of bowl is 2-7/8" to 3"
The bowl length is 2-1/2"
The overall height is 7-1/2" to 7-5/8"
It holds 4-1/2 oz.



3011/7
4-1/2 oz. Claret

The Wine appears only in the earlier colors of crystal, carmen, royal blue, gold krystol, forest green, amber and amethyst. There is a possibility it may be found in heatherbloom and peach blo, although they have not been seen. The wine was dropped from the line in the later catalogs.

The Cocktail has a much wider bowl than the Wine. It is known in the early colors of crystal, crystal with optic, carmen, royal blue, gold krystol, forest green, amber, amethyst, heatherbloom with optic, peach blo, topaz, crystal stem with ebony bowl and foot, and crown tuscan stem and foot with gold krystol bowl. It was also made with crown tuscan stem with bowls of carmen, royal blue, forest

green, amber with optic and amethyst. These were made in the late 30's and early 40's and ARE extremely rare.

The Cocktails are also known in the later colors of pistachio, mandarin gold, moonlight blue, mocha, tahoe blue, emerald green, Cambridge pink, smoke, crown tuscan stem and foot with mandarin gold bowl, ebony stem with crystal bowl and ebony foot, and ebony stem with crystal bowl and foot. The Cocktail in some of the later colors was made with a crackle bowl.

The Claret is known in the earlier colors of crystal, crystal with optic, carmen, royal blue, gold krystol, forest green, amber, amethyst and heatherbloom with optic. The Claret was dropped from the line in the late 30's.

These bowl shapes have been seen with various decorations such as Rockwell Sterling trims, Chintz, Vichy, Gloria (see page 31-23 in the NCC 1930-34 Catalog Reprint), Apple Blossom and Rose Point etchings, and Rock Crystal cuttings. Other decorations are possible.

The Cocktail has been reproduced by Imperial Glass Corp. with an ebony or amber stem with crystal bowl and foot. The Imperial Cocktails are shorter as they have a smaller bowl. The quality and detail of the ebony stem is not as good as the Cambridge. The amber is a pure reproduction as Cambridge NEVER made a Nude stem this color.

The Wine is the hardest of the three to find; however, the Cocktail is the most popular to collect because of the variety of colors.

(Next month, Table and Banquet Goblet)

CONCERNING MEMBERSHIP!

by Jo Barstow
Membership Chairman

Our Membership Contest is moving right along. We have several members in close competition, but every member still has a chance to be our winner! It is not too late to enter, so use the membership application on the last page of this *Crystal Ball*, and sign up a new member(s) today. Remember, the Prize for bringing in the most new members is a lovely "one of a kind" Paperweight, personally made by Tom Mosser. Hurry - contest ends June 1st!

I have been your Membership Chairman for almost four years now, and during that time I have become curious concerning our growth. Please allow me to take a few minutes of your time to question you. Over the years we have been making a steady growth in our membership, but every month when I complete my report, I feel that our "delinquent" or "drop" list is too high.

If you are one of our members who is considering not renewing your membership, would you please take a moment to drop us a card telling us "why" or what it is we need to do to keep you as a member? Let us know why you first joined? Any and all of your suggestions would be greatly appreciated.

CONVENTION '81 TO BE "BIGGER & BETTER"

by Jo Barstow
Convention Chairman

Plans for this year's Convention (June 26, 27, 28) are well under way and all things point toward this being our biggest and best Convention ever! Final details including times, exact locations, etc., will appear in a later issue of the *Crystal Ball*, but we want to give you a little "Preview" of what we have in store, so that you can be making your plans to attend!

The Shenandoah Inn has been redecorated with new paint, draperies and carpet, and the air conditioner has been rebuilt. The management has promised to do everything possible to ensure our comfort and pleasure. The room prices have been raised slightly, but they will still be much less than we would have to pay for similar accommodations elsewhere. We suggest you make your reservations as soon as possible by phoning (614) 489-5511 or write to: Shenandoah Inn, P.O. Box 147, Old Washington, OH 43768.

The most important change that we are making this year concerns Advance Registrations, and we want every member to understand the situation so as not to be disappointed at the last minute. Advance Registration is an absolute MUST, and NO late reservations will be accepted. Our Saturday evening Banquet will be a "sit down" dinner and as you know, space is a problem. Your Advance Registration form will be included in your May issue of the *Crystal Ball* (if possible we will have it in the April issue), and we urge you to fill it out and send it in just as soon as you possibly can, as we will accept them on a "first come - first served" basis. We will make every effort to accommodate every advance registration we receive, but we cannot promise.

FRIDAY "EARLY BIRDS" will be rewarded with the opportunity to tour the Mosser Glass and Boyd Crystal Art Glass factories. These tours will enable you to witness firsthand how glass is made, and will also offer you the chance to purchase some of their lovely glass, should you so desire.

OUR ANTIQUE SHOW WILL OPEN FRIDAY EVENING and you will want to be there! Our Chairman Charles Upton is doing his best to bring us quality dealers, who will in turn be displaying lots of quality Cambridge glass, along with other "goodies" for your buying pleasure.

Don't forget the "Get Acquainted" Party that will be held after the Show closes on Friday evening. It is always fun!

SATURDAY WILL BE VERY BUSY because we have a number of activities to occupy your time. Beginning with our CONTINENTAL BREAKFAST we have an interesting Program lined up for you. Mr. Andy Anderson, former Sales Representative with the Cambridge Glass Company for many years, will be our Guest Speaker. He will present us with a display of, and talk on "The Cambridge Arms".

NEW THIS YEAR will be a one day Flea Market. More details will be given concerning this event in future issues of the *Crystal Ball*. All we can tell you now is that if you are an early raiser you can attend the "flea" and be back in time to attend the breakfast -- if you like to sleep late, there will be plenty of time after the breakfast for you to take in both the "flea" and the Antique Show during the day. Our Chairman for the Flea Market is Larry Hughes.

OUR ANNUAL BANQUET will be held Saturday evening and our Guest Speaker will be Dr. John W. Adams, President of the International Carnival Glass Assoc. He will be speaking to us on the topic of "Cambridge Carnival Glass".

More information concerning our two Guest Speakers will be included in a future issue of the *Crystal Ball*.

OUR DISPLAY ROOM will feature the colors of Carmen and Rubina. Can't you just imagine how breath-taking it will be? I know that I will be in awe all weekend!

As usual, we are asking for the loan of glass bowls and candlesticks to be used on our Banquet tables. Our chairman, Karen Jones, will want to hear from you as soon as possible, concerning what you can contribute in the colors of Carmen, Rubina, or Crystal combinations. Please let her hear from you soon.

SUNDAY MORNING will be our Buffet Breakfast and ANNUAL MEETING. Every member will want to attend this important function. After the close of this business meeting, there will still be time to visit the Antique Show once again, and purchase that one last piece of glass you have been considering all weekend -- if it is still there!

Of course, time permitting, we will also have our "Mini-Auction" that has proven to be such fun, and a real money maker for our Museum Fund. Of course this Auction will be conducted by non-other than our resident Auctioneer, Willard Kolb! Our Paperweight Prize will be presented during the weekend to our member bringing in the most NEW members during the year, and if all of this isn't enough, your Board of Directors is hoping to have a "SURPRISE" for all!!

So Make Your Plans Now to Attend -- We Are Making Our Plans For YOU!!

PROJECTS

The personalized Paperweight project is moving along quite well now. We are very pleased with the number of orders that we have received. We would like to apologize for the delay in getting some of the orders out. Tom had hoped to have all of them made and mailed before Christmas but he ran into some difficulties in the production process. We understand he is back on schedule again and those of you who ordered before Christmas should have yours by now. Thank you for being so patient. They are beautiful aren't they?

Many of you had suggested that we commission a Cup Plate by Pairpoint as one of our projects. This we have done and the final information was forwarded to Pairpoint in December. We had decided to have the Swan as a center motif. Mr. Bryden, of Pairpoint, has notified us that there is another cup plate similar to ours and suggested that we find another item for the center. This will be discussed at the Directors meeting and if we make a change we will let you know what it is. It will still be 18 months to 2 years from this past December before we will receive our order. As we told you before they are that far behind in production. It will be something to look forward to.

Hope to see you all at the February Quarterly Meeting and Annual Auction.

YOUR PROJECT COMMITTEE

BY-LAWS CHANGE PROPOSED

The following By-laws changes have been requested by your Board of Directors.

Whereas, it is deemed desirable for your duly elected members to the Board of Directors to have more time for consideration of their choices for election of officers, and

Whereas, it is deemed that the annual election of officers can better be carried out at a time removed from the high activity period of the annual convention, and

Whereas, it is felt that clarification is needed to the By-laws as they now exist to determine the eligibility of vote,

now, therefore be it

Resolved, that Article I be amended to read:

Section 2 Annual Meetings. The annual meeting shall be held in June for the installation of elected directors, the presentation of annual reports and transaction of other business. The term of directors shall officially begin at the close of business of the annual meeting. Charter directors shall hold office until their respective terms end, as per Article VII, Section 4 of the by-laws.

Resolved, that Article VII be amended to read:

Section 1 (a) The Directors of the organization, shall be elected by mail, prior to the annual meeting each year. (b) At the regular meeting six months prior to the annual meeting, the President shall appoint a Nominating Committee of at least three members, the chairman shall be the immediate past president, then an active member of the organization. Should the immediate past president be unable to chair this committee, the Board of Directors shall appoint a chairperson selected from the committee. (c) At the regular meeting three months prior to the annual meeting the Nominating Committee shall present a report, giving the number of Directors to be elected and presenting one or more nominations for each vacancy, at which time additional nominations will be entertained from the floor. (d) The consent of all nominees must be obtained prior to his/her nomination.

Section 2 (a) At least 30 days prior to the annual meeting, a ballot containing all nominees for Board vacancies, will be mailed to the entire voting membership. This ballot must be returned to the National Cambridge Collectors, Inc. no later than 7 days prior to the annual meeting. (b) The results of this ballot shall be announced at a membership function prior to the annual meeting. (c) The nominees receiving the largest number of votes so cast shall be declared elected for the term of office beginning at the close of business of the annual meeting.

Section 3 Election of Officers. Officers shall be elected as provided in Article V of the Constitution. (a) This shall occur at a special meeting of the newly

established Board of Directors, at a time which shall not exceed 30 days after the annual meeting. (b) All nominees for office must have previously agreed to accept their nomination. (c) Officers shall assume duty immediately upon their election.

This Puzzle has been sent to us
"Courtesy of the Cambridge Buffs Study Group".

M	A	R	T	H	A	B	Z	R	R
O	D	O	N	O	R	A	O	O	E
O	Y	N	P	A	H	S	S	Y	W
L	L	A	N	C	E	W	C	N	O
B	L	M	O	P	C	I	R	O	L
R	I	M	O	O	I	L	Y	B	F
E	T	I	R	R	R	L	S	E	D
H	N	S	D	T	P	O	T	I	L
T	A	F	A	I	A	W	A	R	I
A	H	F	G	A	C	N	L	O	W
E	C	U	M	A	E	C	B	J	R
H	D	B	R	A	E	E	A	R	E
Y	E	M	R	R	X	S	L	A	H
R	E	C	A	L	J	H	L	M	T
N	U	U	E	K	P	A	V	R	A
T	Q	Y	R	O	V	I	D	T	E
S	U	D	N	A	L	N	R	E	F

Amber Bexley Buffs Caprice Carmen Chantilly Crystal Ball Diane Ebony Feather Fernland Gadroon Heatherbloom	Ivory Jade Manor Marjorie Martha Mocha Near Cut Opal Portia Rosepoint Square Wildflower Willow
------------------------------------------------------------------------------------------------------------------------------------------------	------------------------------------------------------------------------------------------------------------------------------------

FOR SALE
PERSONALIZED
PAPERWEIGHTS



Each paperweight will be hand made by Tom Mosser. It will be approximately 3 1/2", domed style, as shown above.

Just send your check or money order for \$35 for each paperweight, plus the name you wish to have included, to: N.C.C. Paperweight, P.O. Box 416, Cambridge, OH 43725.

— Classified —

BUYING: DEPRESSION GLASS, CAMBRIDGE, HEISEY, FOSTORIA, AKRO-AGATE, glass figurals and unusual glass "cuties". Nadine Pankow, 207 S. Oakwood, Willow Springs, IL 60480. Phone: 312/839-5231.

13th Annual Antiques Show and Sale

Sponsored by

*Beta Sigma Phi Sorority
of Reynoldsburg, Ohio*

Saturday, March 7, 1981 11 a.m. - 9 p.m.
Sunday, March 8, 1981 12 Noon - 6 p.m.

**Arts and Crafts Building
Ohio State Fairgrounds**

Exit 17th Ave. I-71 Columbus, Ohio

Show Chairman
Mrs. Murray Youtz
1519 Lexdale Drive
Reynoldsburg, Ohio 43068

Show Manager
George Hoffman
129 S. Fourth Street
Newark, Ohio

Benefit: Truro Township Fire Dept.
Pickerington Police Department

Donation: \$1.50

**BOOKS
FOR SALE**

All of the available reference books relating to Cambridge glass can be ordered directly from the Club.

Address your orders for any of the following to:

BOOKS

National Cambridge Collectors, Inc.
P.O. Box 416
Cambridge, Ohio 43725

Please add \$1.00 (P & I) on each book order.
(Not required for Price List only orders)

Ohio residents please add 4 1/2% State Sales Tax.

★ ★ ★ ★ ★ ★ ★ ★ ★ ★ ★ ★ ★ ★ ★ ★ ★ ★

by National Cambridge Collectors, Inc.

1958-1958 CAMBRIDGE GLASS CO. CATALOG REPRINT
(164 page reprint of original catalog)
Paperback \$6.95

1949-1953 CAMBRIDGE GLASS CO. CATALOG REPRINT
(300 page reprint of original catalog)
Hardbound with Price Guide \$14.95

1930-1934 CAMBRIDGE GLASS CO. CATALOG REPRINT
(250 page reprint of original catalog)
Hardbound with Price Guide \$14.95

1978 PRICE GUIDE
for 1930-1934 catalog reprint \$2.00

★ ★ ★ ★ ★ ★ ★ ★ ★ ★ ★ ★ ★ ★ ★ ★ ★ ★

by Mary, Lyle, and Lynn Welker

CAMBRIDGE GLASS CO.
(120 pages of reprint from 8 old catalogs) \$6.95

CAMBRIDGE GLASS CO. BOOK II
(119 pages of reprint from old catalogs) \$6.95

CAMBRIDGE, OHIO GLASS IN COLOR II
(15 color plates w/descriptions and notes) \$5.95

★ ★ ★ ★ ★ ★ ★ ★ ★ ★ ★ ★ ★ ★ ★ ★ ★ ★

by Harold and Judy Bennett

THE CAMBRIDGE GLASS BOOK
(96 pages with 59 color plates) Paperback \$7.95

1903 CAMBRIDGE GLASS CO. CATALOG REPRINT
(106 page reprint of an original catalog) \$7.50

★ ★ ★ ★ ★ ★ ★ ★ ★ ★ ★ ★ ★ ★ ★ ★ ★ ★

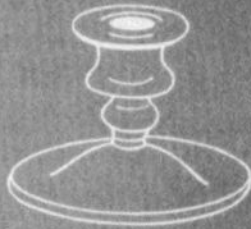
by Charles and Mary Alice Upton

1979 PRICE GUIDE to the CAMBRIDGE GLASS BOOK
(Prices for each item in Bennett book) \$2.00

★ ★ ★ ★ ★ ★ ★ ★ ★ ★ ★ ★ ★ ★ ★ ★ ★ ★



No. 3700
4 1/2 OZ. OYSTER COCKTAIL



No. 628 — 3 1/2" CANDLESTICK



No. P-254 — SUGAR AND CREAM



No. 3900/115 — 76 OZ. JUG



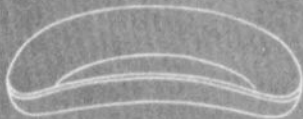
No. 3900/72
6" 2-LITE CANDLESTICK



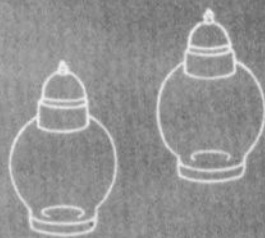
No. P-298 — MARMALADE
AND COVER AND SPOON



No. 968 — 2-PIECE ICER



No. P 454
8" CRESCENT SALAD PLATE



No. P 360 — SALT AND PEPPER

Laurel Wreath

ROCK CRYSTAL ENGRAVED



THE CAMBRIDGE GLASS COMPANY, CAMBRIDGE, OHIO, U. S. A.



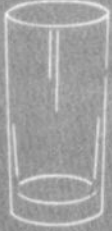
No. 321 — 1 1/2 OZ. TUMBLER



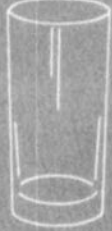
No. 321 — 7 OZ. O. F. COCKTAIL



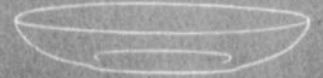
No. P290 — OIL



No. 497 — 14 OZ. TUMBLER



No. 497 — 12 OZ. TUMBLER



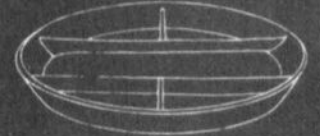
No. P247 — CELERY



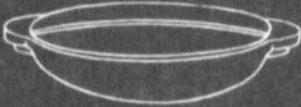
No. P 253 — SUGAR AND CREAM



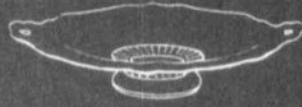
No. 1180
5 1/2" 2-HANDLED BONBON



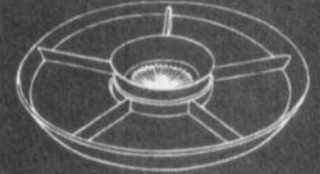
No. P418
12" 5-PART CELERY AND RELISH



No. 1497 — 6" 2-PART RELISH



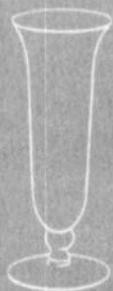
No. P56 — BONBON



No. P419 — 12" 2-PIECE RELISH



No. P-54 — 6" LOW COMFORT



No. 6004 — 8" FOOTED VASE



No. P1498 — 3-PART RELISH

Laurel Wreath

Star & Cadet

ROCK CRYSTAL ENGRAVED



No. 3725 - 9 OZ. GOBLET



No. 3725 - 12 OZ. FTD ICE TEA



No. 3725 - 5 OZ. FTD TUMBLER



No. 3725 - 2 1/2 OZ. COCKTAIL



No. 3725
4 1/2 OZ. OYSTER COCKTAIL



No. 3725 - 1 OZ. CORDIAL



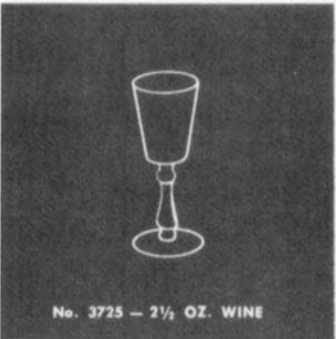
No. 3725 - 4 1/2 OZ. CLARET



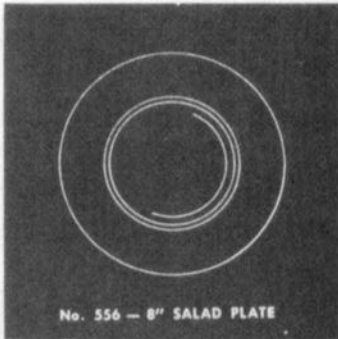
No. 3725 - TALL SHERBERT CADET



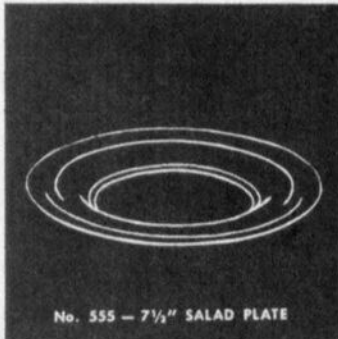
No. 3725 - GOBLET CADET



No. 3725 - 2 1/2 OZ. WINE



No. 556 - 8" SALAD PLATE



No. 555 - 7 1/2" SALAD PLATE



No. 3725 - TALL SHERBERT

(STAR)

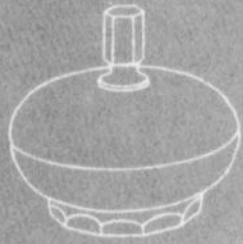
No. 3725 - GOBLET



No. 3725 - 7 OZ. LOW SHERBERT



No. 3725 - 7 OZ. TALL SHERBERT



No. P 306
6" CANDY BOX AND COVER



No. P-254 — SUGAR & CREAM



No. 3790 — 12 OZ. FTD ICE TEA



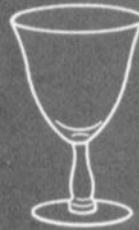
No. 3790 — COCKTAIL



No. 533 — 5 1/2" COMFORT



No. 968 — 2 PC COCKTAIL ICER



No. 3790 — GOBLET



No. 3790 — LOW SHERBET



No. 3900/115 — 76 OZ. JUG



No. P-430 — 12" BOWL



No. 6004 — 8" VASE



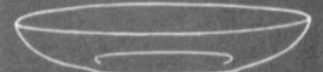
No. 298 — MARMALADE COVER



No. P 290 — 6 OZ. OIL



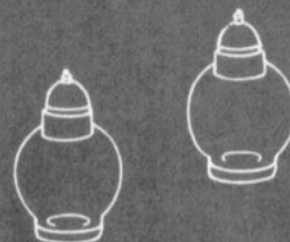
No. P166 — 13 1/2" PLATE



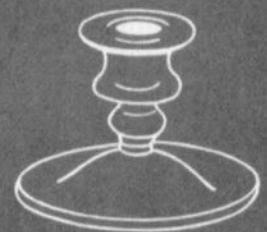
No. P247 — 11" CELERY



No. 1532
3-PIECE MAYONNAISE SET



No. 360 — SALT AND PEPPER



No. 628 — 3 1/2" CANDLESTICK

DEALERS



DIRECTORY

NOTE: When writing to the Dealers listed here, please enclose a SASE!

<p>EVELYN M. ALLEN 135 Cynthia Street Heath, Ohio 43055 Mail Order & Shows 614-522-1635 SPECIALIZING IN CAMBRIDGE GLASS!</p>	<p>BENICIA ANTIQUE SHOP 305 First Street Benicia, California 94510 OPEN 11 AM - 5 PM Closed Monday Z. E. LOPES 707-745-0978 VISIT HISTORIC BENICIA and its 28 shops Off Interstate #80 North of San Francisco</p>	<p>CHARLES MIKULIK Box 416 Elizabeth, N.J. 07207 — COLLECTOR — Always paying good prices for CAMBRIDGE CAPRICE in all colors 201-372-1101 CARRY MOST TYPES OF ANTIQUES</p>
<p>BLACK ROOSTER ANTIQUES 1018 Clark Street Cambridge, Ohio 43725 614-432-3202 M. Sipe CAMBRIDGE GLASS - GENERAL LINE</p>	<p>ANDREJCAK'S ANTIQUES 14533 Bayes Ave. Lakewood, Ohio 44107 Joe & Karen Andrejcek 216-226-3417 SHOWS ONLY — CAMBRIDGE — FENTON — CHINA</p>	<p>COYLE & SCHUSTER ANTIQUES Box 982 - Ph. 614-349-7362 Newark, Ohio 43055 Shows & Mail Order BUY & SELL - CAMBRIDGE - HEISEY</p>
<p>BERKELEY ANTIQUES 69 Berkeley St. Boston, MA 02116 George or Frank 617-426-1048 CAMBRIDGE, HEISEY, GENERAL LINE</p>	<p><i>YOU CAN ADVERTISE YOUR ANTIQUe SHOP HERE!</i> 1 inch - \$6 for six months</p>	<p>FINDER'S KEEPER'S ANTIQUES P.O. Box 303 Dayton, O. 45401 513-254-2937 P.O. Box 16023 Columbus, O. 43216 614-885-2726 SPECIALIZING IN CAMBRIDGE GLASS!</p>
<p>D & D ANTIQUES Columbus, Ohio DICK SLIFKO SHOWS ONLY</p>	<p>GEORGE HOFFMAN ANTIQUES 129 South 4th Street Newark, Ohio 43055 614-345-8021</p>	<p>'OUR GLASS ANTIQUES Box 27, Wills Point, Texas 75169 20th CENTURY COLLECTIBLES featuring CAMBRIDGE GLASS! Shows - No Lists - SASE Please PAUL & GINNY HENDERSON 214-563-6971</p>
<p>THE GLASS CUPBOARD 39 Shire Oaks Drive Pittsford, New York 14534 Marcia Ellis 716-586-7596 CAMBRIDGE ONLY SASE FOR LIST</p>	<p>THE KRAUSE'S 944 Jefferson Ave. Washington, PA 15301 John & Gail Krause 412-228-5033 SPECIALIZING IN DUNCAN MILLER GLASS</p>	<p>1886 HOUSE East Schodack, N.Y. 12063 MAIL and SHOWS Laurie Cruise 518-477-5895 CAMBRIDGE - NORITAKE - AZALEA - D.G.</p>
<p>LASHER ASSOCIATES 119 Water St. Gaithersburg, Md. 20760 Faith Lasher 301-977-8296 SPECIALIZING IN GLASSWARE</p>	<p>ROLLING ACRES ANTIQUES 66484 N. 8th Street Road Cambridge, Ohio 43725 Sandy Jenkins & Anne Ingram 614-432-2570 CAMBRIDGE & GENERAL LINE ANTIQUES</p>	<p>BILL & SHARON PHILLIPS 21730 Priddy Euclid, Ohio 44123 Ph. 216-261-4665 Shows Only BUYING GLASS, ANTIQUES, ETC.</p>
<p>STAGE COACH ANTIQUE MALL 7525 (Rt. 40E) East Pike Norwich, Ohio 43767 SOMETHING FOR EVERYONE Open every day, year round — 614-872-3720</p>	<p>AL STEELE Westerville, Ohio 614-882-6483 or 614-882-7124 Mail Orders and Shows Only HEISEY — CAMBRIDGE — PATTERN GLASS</p>	<p>SWISS HILLS COLLECTIBLES Mary & Wilbur Henderson 303 Guilford Avenue Woodsfield, Ohio 43793 Mail & Shows 614-472-1133 SPECIALIZING IN CAMBRIDGE GLASS!</p>
<p>CHARLES A. SHAW Glenwood Gardens - R.V.W. 1B Yonkers, NY 10701 AMERICAN GLASS — 914-476-5175 SHOWS & MAIL ORDER!</p>	<p>SHIRLEY S. LADOUCEUR Antiques and Collectibles Specializing in Cambridge Glass BY APPOINTMENT 7597 Daphne Drive 315-458-5297 No. Syracuse, NY 13212</p>	<p>GLASS MENAGERIE ANTIQUES Cambridge - General Line New Collectable Glass YVONNE L. GORDON Route #2 614-826-7140 New Concord, OH 43762</p>
<p>THREE FRIENDS ANTIQUES CO. 3930 Broadview Rd. Richfield, OH 44286 Hours: Tues.-Sat. 10-4, Sun. 12-5 Phone 216-659-3930 WE BUY & SELL CAMBRIDGE!</p>		



National Cambridge Collectors, Inc.

P. O. Box 416, CAMBRIDGE, OHIO 43725

A nonprofit organization dedicated to the preservation and study of Cambridge Glass

You Are Cordially Invited
To Become A Member Of The

NATIONAL CAMBRIDGE COLLECTORS, INC.

Benefits derived from membership include: receipt of our club publication, The Cambridge CRYSTAL BALL; informative Quarterly Meetings; Antique Shows; Auctions; and other special events.

The Cambridge CRYSTAL BALL is published the first of each month. This newsletter contains educational and interesting articles, questions and answers, information on reproductions and reissues, notices of all club functions, classified advertisements, dealers directory, and many other features of interest to collectors of Cambridge Glass.

Yearly dues are \$10.00 for Individual Members and \$3.00 for each Associate Member. All members have voting rights, but only one issue of the CRYSTAL BALL will be mailed per household.

Name (please print) _____ \$10.00

Mailing Address _____

City _____ State _____ Zip _____

Associate Members: (Must be at least 12 years of age and living in the same household.)

1. Name _____

2. Name _____

3. Name _____

Total number of Associate Members _____ @ \$3.00 each \$ _____

TOTAL AMOUNT ENCLOSED: \$ _____

Please make check payable to: NATIONAL CAMBRIDGE COLLECTORS, INC.

Recommended by _____

USE THIS APPLICATION -- NCC MEMBERSHIP MAKES A "GREAT GIFT"!

N. C. C.

FEBRUARY QUARTERLY MEETING

February 27, 1981 - 8 PM

PROGRAM

Demonstration of the "Etching Process"
also Auction Preview

(bring items for "Show & Tell")

1981 ALL-CAMBRIDGE GLASS AUCTION

February 28, 1981 - 11 AM

both events to be held at _____

THE SHENANDOAH INN

P.O. Box 147, Old Washington, OH 43768

(I-70, Exit 186 - 7 miles E of Cambridge)

Phone: 614/489-5511 for Motel Reservations.



National Cambridge Collectors, Inc.

P. O. Box 416
Cambridge, Ohio 43725

FIRST-CLASS MAIL
U.S. POSTAGE
PAID
So. Vienna, Ohio
45369
Permit No. 15

FIRST CLASS MAIL