

Cambridge



Crystal Ball

ISSUE NO. 89

SEPTEMBER 1980

Published monthly by the NATIONAL CAMBRIDGE COLLECTORS, Inc.
To encourage and to report the discovery of the elegant and boundless product
of the Cambridge Glass Company, Cambridge, Ohio

Thoughts from the NEW President - - - -

Well, the 1980 Convention is history, and after a short settling down period we've started work on the 1981 Convention to give you a bigger and better Convention. Not that this is anything new, as this is what the committees strive for every year, and each year they have been successful. Again this year registration for the three day event exceeded anything we've had in previous years. We are working on some new activities for the convention next year that should be fun for everyone. Now if all of you wonderful people, who attended this year, will attend next year, and talk some of your friends into attending, we'll be able to set another record. Gee! I wonder what heights this convention can really reach?

The convention has been tentatively set for the same location next year. Admittedly everything was not just exactly what it was the previous year, but the management has promised some changes to get it back to what it was the previous year and we think they are sincere. Personally, I think that the failure of the air-conditioner system was the biggest problem. It seems that when you're hot and muggy it makes you irritable, and when you're irritable you find fault with

things that you ordinarily don't notice. That's human nature, or at least it is with me. It would be very difficult to find another facility where we could have our rooms and all activities without leaving the building.

Oh! By the way, I'm your new president for the coming year. I'm WHO'S THAT GUY? I was elected president by the board because I was half asleep at the Directors meeting Sunday morning, and when they asked if anyone wanted to be president, I was the last one to yell "NO".

Seriously, I'm probably president because, for personal reasons, Bill decided not to seek re-election. If he would have he would probably still be writing these articles. Bill held the presidency for five years and I would say he needs a well deserved rest. It was through his great effort, and the effort of those who served with him, that the club has reached such heights. Thanks Bill, and I'll try to fill your size 20 shoes with my size seven feet.

I'll not make any promises as to what we'll be able to accomplish in the ensuing year. Of course, I'll have priorities, that can only be accomplished with the help of the directors and the membership. We have a fine hard working Board of Directors who spend a lot of time, doing a lot of different things for the club. The Captain (President) and ships officers (Directors) can only measure their success, however, by what a devoted and hard working crew (Members) does. You the crew will determine the ultimate success of the Club.

MEMBERSHIP RENEWAL NOTICE
If the date on your address label is - - **9 - 80**
This is your LAST ISSUE of the
CRYSTAL BALL. Please renew NOW!

CAMBRIDGE CRYSTAL BALL

Official publication of National Cambridge Collectors, Inc., a non-profit corporation with tax exempt status. Published once a month for the benefit of its members. Back issues of the CRYSTAL BALL are available to members only, at a cost of 60¢ each or 12 issues for \$7.

Membership is available for individual members at \$10 per year and additional members (12 years of age and residing in the same household) at \$3 ea. All members have voting rights, but only one CRYSTAL BALL will be mailed per household.

1980-81 OFFICERS & COMMITTEE CHAIRPERSONS

PRESIDENT	Willard Kolb
VICE-PRESIDENT	Josephine Barstow
SECRETARY	Janice Hughes
TREASURER	William Smith
SERGEANT-AT-ARMS	Don Armbrrecht
ASSISTANT SECRETARY	Susan Rankin
BOOK SALES	Reba Embree
BUDGET & FINANCE	David Rankin
BY-LAWS	David Rankin
CONVENTION	Josephine Barstow
MEMBERSHIP	Josephine Barstow
MEMBERSHIP ASSISTANT	Brenda Harbaugh
MUSEUM	William Harbaugh
MUSEUM CURATOR	Charles Upton
PROGRAM & ENTERTAINMENT	Frank Wollenhaupt
PROJECT	Willard Kolb
PUBLIC RELATIONS	William Smith
PUBLICITY	Joseph Andrejcek
STUDY GROUP ADVISORY	Jack Rettig
1981 ALL-CAMBRIDGE AUCTION	Lynn Welker
1981 ANTIQUE SHOW	Charles Upton
CRYSTAL BALL EDITOR	Phyllis Smith

CLASSIFIED ADVERTISING RATES

5¢ per word \$1.00 minimum

We cannot mix type size in classified advertisements. Abbreviations and initials will count as words. Payment in full MUST accompany all ads.

DISPLAY ADVERTISING RATES

	Members	Non-Members
1/8 page	\$ 4.00	\$ 6.00
1/4 page	7.00	10.00
1/2 page	12.00	18.00
3/4 page	17.00	25.00
Full page	22.00	33.00

DEALERS DIRECTORY

1" ad \$6.00 for 6 months

Cambridge CRYSTAL BALL assumes no responsibility for items advertised and will not be responsible for error in price, description or other information.

Advertising copy must be in our hands by the 15th of each month to assure publication in our next issue. Advertisements containing reproductions will not knowingly be accepted unless clearly stated.

PLEASE ADDRESS ALL CORRESPONDENCE TO

CAMBRIDGE CRYSTAL BALL
National Cambridge Collectors, Inc.
P.O. Box #416
Cambridge, Ohio 43725

PLEASE NOTIFY US IMMEDIATELY OF ANY CHANGE
IN YOUR ADDRESS!

Please enclose a self-addressed, stamped envelope
when requesting information!!

STUDY Club News

STUDY GROUP #2 - EASTERN OHIO "THE CAMBRIDGE SQUARES"

The August meeting of the Cambridge Squares Study Group was held on August 10th, at the home of Bill and Meg Turner, Zanesville. A cookout and swimming party was held with 8 members and 3 guests in attendance.

The discussion on nudes was held around the pool, with much of interest being learned by all. During show & tell an unfinished nude cocktail was observed, a light green juice glass with golf scene etching, and a Yardley pink frosted rouge jar.

The next meeting will be held at the home of Janice and Larry Hughes.

submitted by Meg Turner

STUDY GROUP #6 - NEW YORK STATE "THE FINGERLAKES"

Monthly report for June and July 1980 for the Fingerlakes Study Group #6. Those in attendance were Don and Shirley Ladouceur and Bob and Marcia Ellis.

Our group had a brief meeting on Saturday afternoon while we were at the Convention. It was felt that attendance at the various lectures could, perhaps, be counted toward our required number of meetings.

Our July meeting found Bob and Marcia Ellis acting as host and hostess on July 20th. There seemed to be a goodly bit of business to be attended to at this time, after which Marcia did a presentation on the Statuesque or Nude Stem line. Bob followed it up with a brief presentation on Ivy Balls. We had all 3 sizes in the Statuesque line to study. While carmen, royal blue, amethyst, crystal, and forest green were the most prevalent colors, we did have a crown tuscan cocktail with an amethyst bowl; a silver overlay Champagne signed Rockwell; a Brandy with frosted stem and foot with carmen bowl; and another with crystal foot, frosted stem and carmen bowl. One other goodie was an etched, all crystal claret.

There was, also, an all crystal Comport; a pair of crown tuscan candlesticks; and a pair of the same with prisms and bobeches; plus the tall and short Comports in crown tuscan. One all crystal covered Cigarette Box, and one with covered Box in carmen. In the Statuesque Seashell line, there was an all mandarin gold example.

continued on page 13



No. 7390. 10 oz.
Goblet



No. 7390. 5 oz.
Tall-Ftd
Sherbet



No. 7390. 3 oz.
Wine



No. 8023. 10 oz.
Ftd and Handled
Tumbler



No. 7390. 4 oz.
Claret



No. 7390. 5 1/2 oz.
Cafe Parfait



No. 7390. 3 oz.
Cocktail



No. 8858. 12 oz.
Tumbler



No. 8858. 10 oz.
Hdl. Tumbler



No. 8858. 9 oz.
Table Tumbler



No. 8858. 5 oz.
Tumbler



No. 047
Individual
Salt



No. 7390. 1 oz.
Pousse
Cafe



No. 7858. 6 oz.
Fruit Salad



No. 7390. 5 oz.
Low Ftd Sherbet



No. 2090. 5 in.
Jelly Comport



No. 7810.
Finger Bowl
and Plate



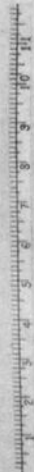
No. 106. 8 oz.
Syrup and Cover



No. 5000. 6 in.
Ftd Nappy



No. 7605. 6 in.
Ftd Bowl



No. 4004. 5 in.
Comport



No. 4002. 20 oz.
Night Bottle
and Tumbler



No. 106. Jug
30 and 66 oz.



No. 96. 4 Pint
Jug



No. 108. 3 1/4
Pint
Jug.

DEEP PLATE ETCHED GRAPE NO. 401



No. 7858. 6 oz. Saucer Champagne or Tall Sherbet



No. 7858. 6 oz. Fruit Salad



No. 5000. 4 in. Footed Nappy



No. 2909. Handled Custard



No. 7858. 5 oz. Footed Sherbet



No. 8858. 9 oz. Table Tumbler



No. 7858. 3 oz. Creme de Menthe



No. 7858. 5 oz. Cafe Parfait



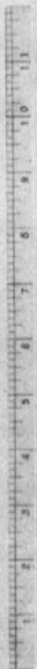
No. 7927 1/2. 4 1/2 oz. Hollow Stem Champagne



No. 7858. 3 1/2 oz. Cocktail



No. 9415. 9 oz. Tumbler



No. 8858. 3 oz. Tumbler



No. 8858. 5 oz. Tumbler



No. 8858. 8 oz. Tumbler



No. 8858. 10 oz. Tumbler



No. 8858. 12 oz. Tumbler



No. 8858. 14 oz. Tumbler



No. 7858. 10 oz. Goblet



No. 7858. 9 oz. Goblet



No. 7858. 6 1/2 oz. Claret



No. 7858. 4 1/2 oz. Claret



No. 7858. 4 oz. Wine



No. 7858. 1 oz. Pousse-Cafe



No. 7858. 1 oz. Cordial

TOY ITEMS

by Doris Isaacs

Cambridge glass toy items are not plentiful, especially in color. The "Colonial" items pictured here, can also be found in the Welker Reprint I, page 120.

Photo #1 shows a #2798 Birthday Candlestick in crystal. It measures all the way to 3" in height.



Photo #1

The butter dish shown in Photo #2, is the #2630 "Colonial" in crystal.

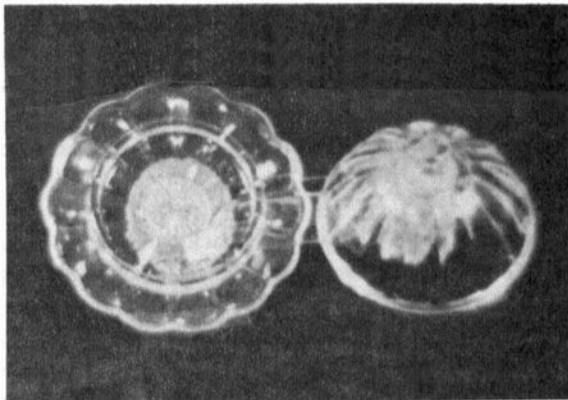


Photo #2

The little creamer in Photo #3, goes with the #2630 "Colonial" butter. The creamer is in crystal.



Photo #3

Photo #4 shows the harder to find "Colonial" creamer, sugar and lid, in green.

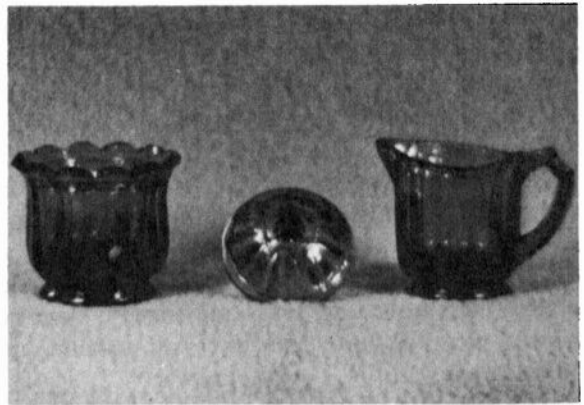


Photo #4

We have the bottom of the "Fernland" butter dish in green, but we are still looking for the top. The "Fernland" is also pictured in the Walker Reprint on page 120.

We did not use the little candlestick pictured here, after the storm and flood which hit Cambridge on August 11th and 12th, but we did give the other candlesticks in the house a good workout for two nights!!

SMITH TO SPEAK IN CALIFORNIA

Bill Smith, NCC Public Relations Chairman, has been asked to speak at the 4th Annual All-Glass Seminar and Dinner sponsored by the Historical Glass Museum Foundation, of Redlands, CA.

The Dinner and Seminar is to be held at the Penthouse of Buena Park Holiday Inn (7000 Beach Blvd. at 91 Frwy.) from 6 to 10 P.M., October 4th.

He will also be attending the Antique & Collectible Show & Sale on Oct. 4th and 5th (10 AM to 4 PM daily) at the Fullerton Holiday Inn.

It is hoped he will be able to meet with many of our California NCC Members during this short visit to California.

WE GET LETTERS

CAMBRIDGE CARNIVAL UPDATE!

"First, I would like to correct a mistake which I have made in my previous study of Cambridge Carnival Glass. Last year I wrote that we had found a Wheat Sheaf cracker jar base in green. (C.B. issue #77, Sept. '79, pg. 5) I did this because I thought it was the same as the one in Bennett's Color Book, plate #52, row 2, #1. Then I saw your article (Phyllis) on this in the January '80 "Glass Review" and thought we might have the "Forks" pattern instead. Recently I have seen for the first time an old Imperial Catalog which contained the illustration of the pattern which is very similar to the "Forks" Cracker Jar. After studying our Cracker Jar base and the illustration for some time, I have become convinced that we have the Imperial product, not the Cambridge one.

A knowledgeable Carnival Glass friend of ours in Illinois has told us he has seen, and tried without success to buy a Cambridge Cologne Bottle (#2660 Wheat Sheaf) in purple. That is the only purple one we have had reported.

Enclosed are pictures of a punch cup which we just have seen in marigold and green. When I first saw the marigold one it didn't impress me. Then I saw the green one and immediately thought "that looks like Cambridge". I looked through my books and in Welkers Catalog Reprint Book II, page 101, #2351 Design, there is a cup (handled custard) which appears to me to be exactly the same, although it's not the greatest illustration. I would appreciate your opinion on this. Perhaps you might even have a better illustration among your catalogs. The cup is not marked NearCut.



NEARCUT #2351 Punch/Custard Cup

I have recently seen for the first time a #2780 Strawberry Handled Celery Holder in cobalt blue. When I first heard of it I thought perhaps someone just was mistaking a Handled Spoon Holder as that is the same basic shape and the design is arranged identically on the pieces. However, the Celery Holder is clearly from a different mold and is larger than the Spoon Holder.

My wife and I gave talks on Cambridge Carnival Glass at two meetings recently. First was the Lincoln Land Carnival Glass Club Convention, South Beloit, IL in June, then at the International Carnival Glass Association Convention, Perrysburg, OH in July.

I really like the Lion Bookend. I hope you use a variety of colors for future bookends.

Best Wishes, Jack Adams, WI
President, I.C.G.A."

Dear Jack,

How nice to hear from you again. Before commenting on your letter, let me congratulate you upon your recent election to the office of President of the International Carnival Glass Association. It's nice to have a carnival glass authority in our midst!

Sorry to hear that your cracker jar is not Wheat Sheaf after all. But can easily understand how you could have been fooled - that Imperial pattern is confusing, in that it looks so much like the Cambridge. Your error only serves to point up the fact that STUDY, is necessary in identifying these old NearCut patterns. I'm just glad to know that I'm not the only one making mistakes!

In studying some of our research material recently, the following bit of information "jumped out" at us. It's strange how you can read something, and yet not have it make an impression. We've had this information for several years and didn't realize what it was.

In the June 25, 1908 edition of "Crockery & Glass Journal", page 11, the following appeared: "The Cambridge Glass Co. has made a new departure in the presentation to the trade of a full line of pressed iridescent stemware. It has all the beauty of the blown article, and stands as an accomplishment of merit for the Cambridge plant. William Dealing, the New York agent to the company, has the goods on display in his sample room, 25 West Broadway."

Later, in the January 11, 1912 edition of "Crockery & Glass Journal", page 13, was the following excerpt: "Four iridescent glass oil lamps, shade and bowl to match, are also new offerings."

We have also uncovered the following dates of introduction for these NearCut patterns that are known to have been produced in Carnival Glass: #2631 Marjorie, December, 1904; #2651 Feather, November, 1906; #2660 Wheat Sheaf, November, 1907; #2766 Thistle, January, 1911; and #2780 Strawberry, June 1911. We are not positive as to a date of introduction for #2699 Buzz Saw, but we do know that it was being produced in August, 1914.

continued

It is my feeling that this bit of information should prove that the Cambridge Glass Company did, in fact, produce what we all refer to as Carnival Glass, beginning in 1908 and continuing for several years, at least until 1914, and possibly longer.

Your punch, or custard, cup is the #2351 Design as far as I can tell. We have several of these, plus a bowl in crystal in our collection and none of them are marked. We have nothing further in the way of an illustration, than the one you have made reference to in your letter.

Hearing about the Strawberry handled Celery Holder is exciting. The fact that one has been found regardless of color is great news by itself, but the fact that it has been found in cobalt blue makes it better still!

Thanks for your comments on the Lion Bookend. Everyone who has seen them feels the same as you, it seems. I believe it is the intention of the Project Committee to complete the Bookend series by producing each bookend in a different color.

Phyllis

(Members interested in past articles on Carnival Glass, by Dr. Jack Adams, may order the following back issues at 60¢ each: #57 and #77.)

CONVENTION COMMENTS

"It continues to amaze us how our Club manages to grow in size and still maintain the warm friendly and sharing atmosphere that one encounters each year at the Convention. So often these characteristics become lost in the process of growth.

Once again, so many did so much to produce another excellent Convention, and for those of us who do travel considerable distances, it makes the effort and expense all worth while.

The two new slide presentations on Figurals and Colors were very well done.

My only regret was that I did not receive as payment for my "one hour stint" in the Display Room, the willow blue Rabbit Candy Container!!!! The display room was really breathtaking.

Hope you all get some rest now, and "Thanks" from us, for all you've done.

Marcia and Bob Ellis, NY"

"I wish to comment on the 1980 Convention. The committee must have spent HOURS AND HOURS on the Convention to have it run as smoothly as it did. I was able to attend from Saturday afternoon until Sunday morning, and I found that it was the most delightful weekend I have ever spent.

My husband and I wish to thank you all!

Martha & Harold Gilbert, OH"

THANK YOU NOTES

I wish to thank all members who sent me cards during my stay at University Hospital in Columbus.

Gerald Landman

Special thanks to Bill and Phyllis Smith for their help in our behalf during the Convention when we were unable to attend.

Gerald and Ruby Landman

NEW MEMBERSHIP CONTEST!

by Phyllis Smith

If you didn't get involved in last year's Membership Drive, you will surely want to do so this year! Membership Chairman, Jo Barstow, has announced that the contest will run from July 1, 1980 thru June 1, 1981.

The "Prize" for bringing in the most NEW Members during that time period will be a personalized Paperweight by Tom Mosser. This paperweight will be similar to the three sold during our 1980 Convention, but it will be different enough to make it a "one of a kind". It will contain the name of the winner, the N.C.C. club emblem, and color cullet dug from the old Cambridge Glass Company dump.

We will be happy to help you in any way we can. If you need Membership Applications, please write and let us know and we will send them right out to you!

Once again, members of your Board of Directors, their families, and your CRYSTAL BALL Editor are not eligible to enter this contest!

PROJECTS

by Willard Kolb

We still have lion bookends. We only wish that every member could see these bookends and we're sure everyone would want to own one. No doubt it is hard for someone to send thirty dollars for a lion bookend not knowing what it will be like. I'm sure the 95 we sold at Convention were bought because people could see them. They didn't want to buy without seeing them. All we can tell you, to assure you that they are worth the money, is, that of the 300 or so that have been sold so far, we have not received one complaint. Some have written or called or made personal compliments about them. Those of you who cannot see one and think you may like to order one, do so. When you receive it and are not satisfied with it, let us know and we'll make arrangements for you to ship it back and return your money.

We are still working on the next project to be made by Imperial before the next bookend is issued. It will be something small and we haven't come up with what it will be yet. We will have to choose the item or several items and them check with Imperial to see if they have the mould and if it is usable. It all takes a little time.

One project, that has been initiated, is the personalized paperweights that Tom Mosser will produce for us. These will be the same type paper weight that Tom made for us to auction at Convention for the Museum Fund. For those who did not get to see them, they were approximately 3½" domed paperweights. The base of the paperweight is decorated with cullet of actual Cambridge Glass. There was a floral decoration with the N.C.C. Seal over this. They sold for \$60.00, \$70.00 and \$70.00 respectively. The ones Tom will produce for us now will be identical in every way except, in the place of the floral decoration, there will be the persons name. They must be personalized or he will not produce them. This is to protect the investment of the people who so willingly bought the one of a kind that we auctioned at Convention. The Club will have exclusive rights to sell these and he will not produce them for any individual.

These paperweights are for sale now at \$35.00 each including postage and handling. They will be made as the orders are received and there will be a 3 to 5 week wait from order date until you receive them. Tom will make these himself at his own leisure, and if many orders are received at one time, as we anticipate, it may be a little longer. (Wonderful Christmas gifts.) There will be no order blanks, just send your check or money order along with the name you wish to have put on the paperweight to: N.C.C. Inc., Box 416, Cambridge, Ohio 43725

This will be an ongoing project so long as Tom is willing to make them for us, but we hope you will all order as soon as possible.

DATES FOR YOUR CALENDAR

**February Quarterly Meeting
and
1981 AUCTION**

March 6 & 7, 1981

**1981 CONVENTION
and
ANTIQUÉ SHOW & SALE**

June 26, 27, 28, 1981

Details for

**Our November Quarterly Meeting
will be in next months
CRYSTAL BALL!**

Ohio State Fair Report

by David B. Rankin

It's fair time again and 35 pieces of Cambridge glass made an appearance at the Ohio State Fair. In typical fashion Cambridge did well by gaining 25 ribbons. This was the sixth year that a significant number of Cambridge items were entered and it is difficult to find a new way to write about the success that Cambridge has achieved.

The most notable thing that I have observed in these six years is that Cambridge Glass has no major rival. There is, of course, strong competition in some of the individual categories. For some examples, there are four "Ohio manufacturers only" categories and Heisey is on a par with Cambridge in three of these. In the Ohio colored figurals class, Cambridge is offered little competition. There are usually ten other classes not restricted to Ohio manufacturers and most of these classes are specific colors such as Amber, Amethyst, etc. Cambridge does very well in all these classes with the only strong consistent competition coming the Custard class from Heisey and Northwood. The Carmen "Red" class generally offers very little competition to Cambridge.

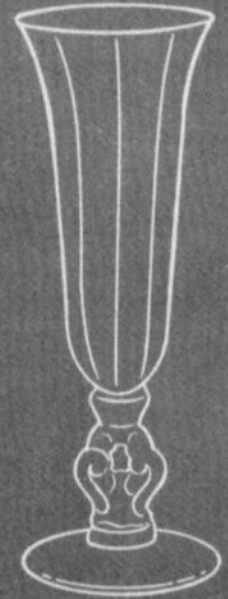
In general, there is no other glass manufacturer that can compete so well in so many different categories. This is why we collect the best. Collect Cambridge!



No. 3900/166 — 14" PLATE



No. 3900/66 — CRIMPED BOWL



No. 1238 — 12" VASE



No. P101/7801
7-PIECE COCKTAIL SET



No. 6004 — 6" VASE



No. 3900/115 — 76 OZ. JUG



No. 3900/115 — 13 OZ. TUMBLER



No. 7801 — 4 OZ. COCKTAIL



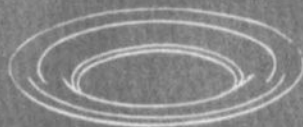
No. 498 — 14 OZ. TUMBLER X



No. 3900/117 — 20 OZ. JUG



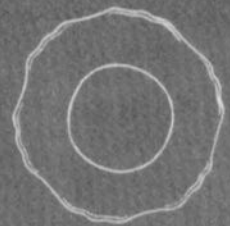
No. 6004 — 8" FTD VASE



No. 555 — 7 1/2" SALAD PLATE



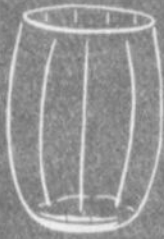
No. 3900/100 — 6 OZ. OIL



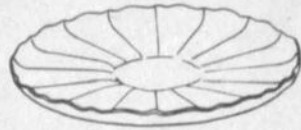
No. 3400/62 — 8 1/2" SALAD PLATE



THE CAMBRIDGE GLASS COMPANY, CAMBRIDGE, OHIO, U. S. A.



No. 3900/117 - 5 OZ. TUMBLER



No. 3900/33
13" 3-FOOTED PLATE



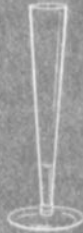
No. 646 - 5" CANDLESTICK



No. 3900/72
6" 2 LITE CANDLESTICK



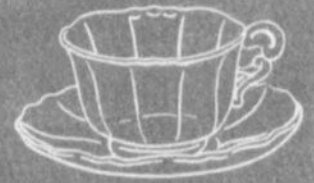
No. 3900/118 - 32 OZ. JUG



No. 274 - 10" BUD VASE



No. 3900/74
6" 3-LITE CANDLESTICK



No. 3900/17 - CUP & SAUCER



No. 3900/167 - 14" PLATE



No. 477 - 9 1/2" PICKLE



No. 3400/1180
5 1/4" 2 HDL. BONBON



No. 3400/90 - 6" 2-PART RELISH



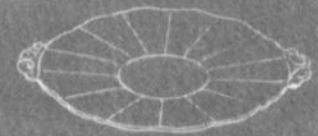
P56 - 8" 2-HANDLED PLATE



No. 1603 - 10" HURRICANE LAMP



No. 1617 - HURRICANE LAMP



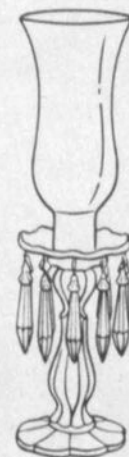
No. 3900/35 - 13 1/4" 2-HANDLED
CAKE PLATE



No. 3900/68 - 5" CANDLESTICK



No. 647 - 6" CANDLESTICK



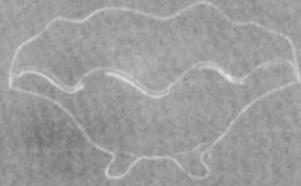
No. 1613 - 17" HURRICANE LAMP



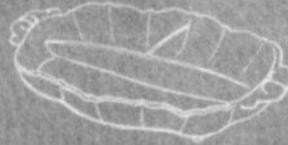
No. 1338
6" 3 LITE CANDLESTICK



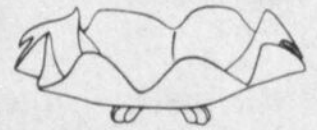
No. 3500/69
6 1/2" 3-PART RELISH



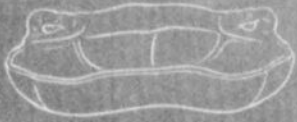
No. 3400/160 — 12" 4 FTD. BOWL



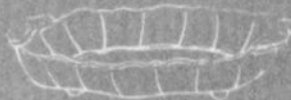
No. 3900/126
12" 3 PART CELERY & RELISH



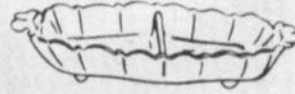
No. 3400/48 — 11" 4 FTD BOWL



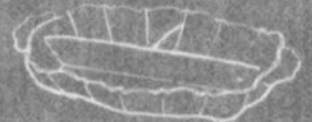
No. 3400/91 — 8" 3 PART RELISH



No. 3900/123
7" RELISH AND PICKLE



No. 3900/124 — 7" 2 PART RELISH



No. 3900/125
9" 3-PART CELERY AND RELISH



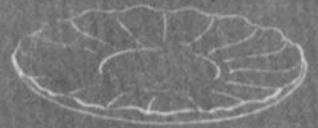
No. P 101
36 OZ. COCKTAIL SHAKER



No. 3400/1181
6" HANDLED PLATE



No. 3900/120
12" 5-PART CELERY AND RELISH



No. 3900/166 — 14" PLATE



No. P 54 — 6" 2 HDL. BONBON



No. P 55 — 6" 2 HDL. BASKET



No. 3500/15 — INDIVIDUAL
SUGAR AND CREAM

Rose Point Wildflower Chantilly



When we turned to admire the collection of Ivy Balls, one outstanding beauty was an all crystal #1066 stem with the ball etched in Rosepoint. One royal blue Ivy Ball with crystal nude stem was available, but all others were with the ring stem in colors of carmen, amber, ebony, lt. emerald green, amethyst, and royal blue. All of these had the ring stem and base in crystal.

Our next meeting will be at the home of Don and Shirley Ladouceur in Syracuse, N.Y. on Sunday August 24th. At this meeting, we will be packing up our baskets - unpacking them - admiring and studying them - packing them up again - only to unpack them upon arriving home. Collectors are funny people - but who has more fun!!!!

submitted by Marcia Ellis

**STUDY GROUP #7 - EASTERN OHIO
"THE CAMBRIDGE BUFFS"**

The regular monthly meeting of the Cambridge Buffs Study Group scheduled for August 13 at the home of Jim and Shirley Douglas was cancelled because of high water. It will be rescheduled.

There have been four work meetings since the last regular meeting. These have been limited to work on the price guide.

submitted by Doris Isaacs

FLASH FLOOD HITS CAMBRIDGE

The worst flood to hit Cambridge, OH since 1935, dealt a mighty blow to the area on Monday and Tuesday, August 11 and 12! Water as high as 24 ft. in some places, hit the area of S.R. 209 and I-70 the hardest. Many businesses will be closed for six weeks or longer.

Our Quarterly Meeting was held on August 18th, as planned, and most of the water had receded by then. The Columbia Gas Company is on high ground so there were no problems there. Complete coverage on this meeting will appear in the October issue of the CRYSTAL BALL.

Our newly acquired property was covered by approximately 3 ft. of water, but relatively little, if any, damage was done to the cement block building.

BOOKS FOR SALE

All of the available reference books relating to Cambridge glass can be ordered directly from the Club.

Address your orders for any of the following to:

BOOKS
National Cambridge Collectors, Inc.
P.O. Box 416
Cambridge, Ohio 43725

Please add \$1.00 (P & I) on each book order.
(Not required for Price List only orders)

Ohio residents please add 4½% State Sales Tax.

★
by National Cambridge Collectors, Inc.

1958-1958 CAMBRIDGE GLASS CO. CATALOG REPRINT
(164 page reprint of original catalog)
Paperback \$6.95

1949-1953 CAMBRIDGE GLASS CO. CATALOG REPRINT
(300 page reprint of original catalog)
Hardbound with Price Guide \$14.95

1930-1934 CAMBRIDGE GLASS CO. CATALOG REPRINT
(250 page reprint of original catalog)
Hardbound with Price Guide \$14.95

1978 PRICE GUIDE
for 1930-1934 catalog reprint \$2.00

★
by Mary, Lyle, and Lynn Welker

CAMBRIDGE GLASS CO.
(120 pages of reprint from 8 old catalogs) \$6.95

CAMBRIDGE GLASS CO. BOOK II
(119 pages of reprint from old catalogs) \$6.95

CAMBRIDGE, OHIO GLASS IN COLOR II
(15 color plates w/descriptions and notes) \$5.95

★
by Harold and Judy Bennett

THE CAMBRIDGE GLASS BOOK
(96 pages with 59 color plates) Paperback \$7.95

1903 CAMBRIDGE GLASS CO. CATALOG REPRINT
(106 page reprint of an original catalog) \$7.50

★
by Charles and Mary Alice Upton

1979 PRICE GUIDE to the CAMBRIDGE GLASS BOOK
(Prices for each item in Bennett book) \$2.00

★ ★

MRS. MARY HENDERSON

303 Guilford Ave., Woodsfield, OH 43793
Phone: 614-472-1133

1. Rosepoint

Ice Bucket (#3400/851)	\$ 95
Doulton Pitcher (#3400/141)	185
Ftd. Basket, 6", 2 hld. (#3500/55)	38

2. Cleo

Pink, 6 1/4" Bonbon (#749)	15
Pink, 8 1/2" Bowl (#971)	25
Pink, 10" Bowl (#984)	28
Green, 7" Plate, 2 hld. (#759)	15
Green, 6 1/4" Bonbon w/gold (#749)	18

3. Crystal Nude Compote, 7", flared . 95

4. Pink Swan, 6 1/2", marked 110

5. Amber #1066 Stems

2 - 11 oz. Goblets (each)	12
6 - 7 oz. Tall Sherbets (each)	11
3 - 3 oz. Tall Cocktails (each)	10
4 - 1 oz. Cordials (each)	20

Postage & Insurance Extra - - - - - All Guaranteed

— Classified —

FOR SALE: SWANS: 3 Amber 3", \$75 ea.; Crystal 3", \$15; Crown Tuscan 3", \$25; 5 light Green 3", \$30 ea.; Mandarin Gold 3", \$30; 2 Pink 3", \$30 ea.; Pink 6 1/2", internal flaw in tail, \$75; Gold Krystal 6 1/2", \$110; Ebony 6 1/2", chip in wing, \$50. **CRYSTAL:** 2 #3625, 12 oz. Ice Tea, Chantilly, \$14 ea.; pair #1338, 6" 3-lite Candlesticks, \$45; P101 Shaker, crack in lid, Manor cutting, \$22; 6 #3500 Champagnes, Elaine etch, \$15 ea.; #34 Nut Cup, \$5; 3 #599, 5 1/4" Coasters, \$5 ea.; #3500/148 Comport, silver overlay, \$25; pair #647 Candlesticks, 2-lite w/Rock Crystal cutting \$45; 2 #55, Hurricane Lamps, chips on chimney, \$50 ea. All prices plus Postage and Insurance. Richard Hoppek, 1915 Pice Pl., Falls Church, VA 22043.

FOR SALE: ROSEPOINT, service for 6: dinners; desserts, bread & butters; cups; saucers; and ftd. tumblers. Extra pieces include: dinners; desserts; bread & butters; cruet; sugar, creamer, butter; salad bowl; platter, relish; salts & peppers; jam; mayonnaise; candleholders; cocktails, sherbets; and water pitcher. Make offer on set or pieces. Mrs. Fred Tayntor, 504 Park Dr., Rome, NY 13440. Phone: 315-337-2572.

COLLECTORS ITEM: MORGANTOWN Ruby Glass reasonably priced. 48 pieces: 14 goblets; 8 iced tea glasses; 10 sherbets; 8 champagne/wine goblets; 8 fruit juice glasses. For further information, write: Mrs. Claire E. Horne, 725 Penn. Ave., Bristol, TN 37620.

WANTED: CAMBRIDGE CAPRICE by private collector. Prefer moonlight blue, but am interested in all colors for this collection. I, of course, need the hard to find pieces: dinners; stems; 1/4 lb. butter, epergnes; etc. Does anyone know if there is a punch set? Thank you, Clinton Newman, Rt. 2, Box 1066, Odessa, FL 33556. Phone: 813-920-2685.

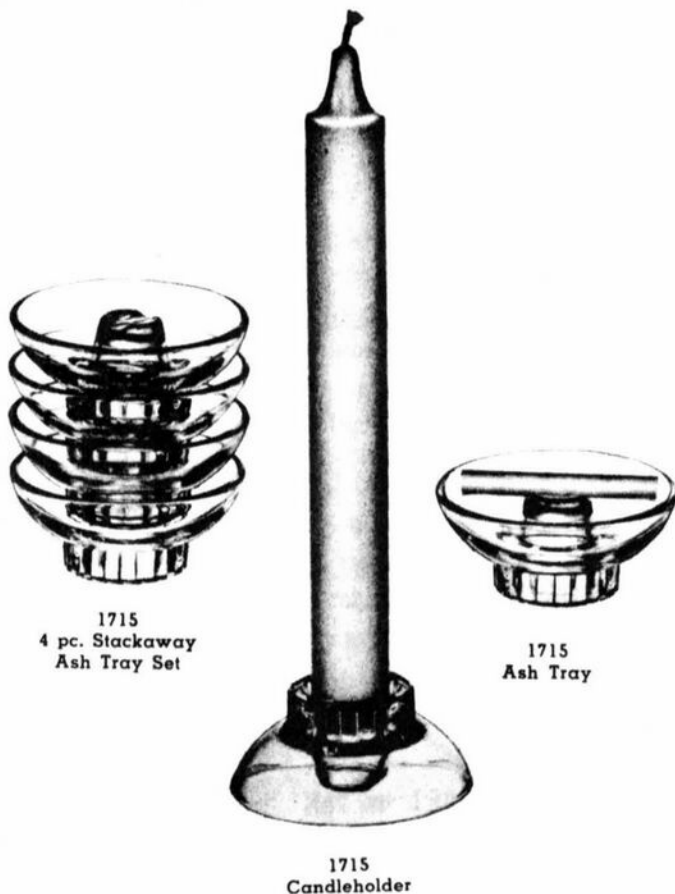
WANTED: NUDE STEMS, amethyst tops. Paying Top Prices! Banquet Goblet; Hock; Roemer; #10 and #11 Cocktail; Comport, cupped, flared or blown: covered Sweetmeat; Candy Box; Cigarette Holder; Cigarette Box; Ash Tray; Mint; Bud Vase; Ivy Ball. Also #1636 Bird figure. Lenora McNabb, 3747 Oak Brook Ct., Pleasanton, CA 94566.

BUYING DEPRESSION GLASS, Cambridge, Heisey, Fostoria, Akro-Agate, glass figurals and unusual glass "cuties". Nadine Pankow, 207 S. Oakwood, Willow Springs, IL 60480. Phone: 312-839-5231.

DID YOU LOSE SOMETHING?

Someone left a piece of glass on the "Show & Tell" table during the Sunday morning breakfast at the Convention.

If it was you - Please write our Secretary a description, and it will be mailed to you. Thanks for your prompt attention to this matter!



DEALERS



DIRECTORY

NOTE: When writing to the Dealers listed here, please enclose a SASE!

<p>EVELYN M. ALLEN 135 Cynthia Street Heath, Ohio 43055 Mail Order & Shows 614-522-1635 SPECIALIZING IN CAMBRIDGE GLASS!</p>	<p>BENICIA ANTIQUE SHOP 305 First Street Benicia, California 94510 OPEN 11 AM - 5 PM Closed Monday Z. E. LOPES 707-745-0978 VISIT HISTORIC BENICIA and its 28 shops Off Interstate #80 North of San Francisco</p>	<p>CHARLES MIKULIK Box 416 Elizabeth, N.J. 07207 — COLLECTOR — Always paying good prices for CAMBRIDGE CAPRICE in all colors 201-372-1101 CARRY MOST TYPES OF ANTIQUES</p>
<p>BLACK ROOSTER ANTIQUES 1018 Clark Street Cambridge, Ohio 43725 614-432-3202 M. Sipe CAMBRIDGE GLASS - GENERAL LINE</p>	<p>YOU CAN ADVERTISE YOUR ANTIQUE SHOP HERE! 1 inch - \$6 for six months</p>	<p>COYLE & SCHUSTER ANTIQUES Box 982 - Ph. 614-349-7362 Newark, Ohio 43055 Shows & Mail Order BUY & SELL - CAMBRIDGE - HEISEY</p>
<p>BERKELEY ANTIQUES 69 Berkeley St. Boston, MA 02116 George or Frank 617-426-1048 CAMBRIDGE, HEISEY, GENERAL LINE</p>	<p>D & D ANTIQUES 184 East Kossuth Street (GERMAN VILLAGE) Columbus, Ohio 43206 DICK SLIFKO 614-443-6020</p>	<p>D'MARIE'S ANTIQUES US Rt. 1 - just South of Rt. 606 Thornburg, Virginia 22565 703-582-6220 Jim Rankin OPEN EVERY DAY 10 AM to 6 PM</p>
<p>THE GLASS CUPBOARD 39 Shire Oaks Drive Pittsford, New York 14534 Marcia Ellis 716-586-7596 CAMBRIDGE ONLY BASE FOR LIST</p>	<p>FINDER'S KEEPER'S ANTIQUES P.O. Box 303 Dayton, O. 45401 513-254-2937 P.O. Box 16023 Columbus, O. 43216 614-885-2726 SPECIALIZING IN CAMBRIDGE GLASS!</p>	<p>GEORGE HOFFMAN ANTIQUES 129 South 4th Street Newark, Ohio 43055 614-345-8021</p>
<p>LASHER ASSOCIATES 119 Water St. Gaithersburg, Md. 20760 Faith Lasher 301-977-8296 SPECIALIZING IN GLASSWARE</p>	<p>'OUR GLASS ANTIQUES Box 27, Wills Point, Texas 75169 20th CENTURY COLLECTIBLES featuring CAMBRIDGE GLASS! Shows - No Lists - SASE Please PAUL & BINNY HENDERSON 214-563-6971</p>	<p>THE KRAUSE'S 944 Jefferson Ave. Washington, PA 15301 John & Gail Krause 412-228-5033 SPECIALIZING IN DUNCAN MILLER GLASS</p>
<p>YOU CAN ADVERTISE YOUR ANTIQUE SHOP HERE! 1 inch - \$6 for six months</p>	<p>ROLLING ACRES ANTIQUES 66484 N. 8th Street Road Cambridge, Ohio 43725 Sandy Jenkins & Anne Ingram 614-432-2570 CAMBRIDGE & GENERAL LINE ANTIQUES</p>	<p>1886 HOUSE East Schodack, N.Y. 12063 MAIL and SHOWS Laurie Cruise 518-477-5895 CAMBRIDGE - NORITAKE - AZALEA - D.G.</p>
<p>CHARLES A. SHAW Glenwood Gardens - R.V.W.1B Yonkers, NY 10701 AMERICAN GLASS — 914-476-5175 SHOWS & MAIL ORDER!</p>	<p>BILL & SHARON PHILLIPS 21730 Friday Euclid, Ohio 44123 Ph. 216-261-4665 Shows Only BUYING GLASS, ANTIQUES, ETC.</p>	<p>AL STEELE Westerville, Ohio 614-882-6483 or 614-882-7124 Mail Orders and Shows Only HEISEY — CAMBRIDGE — PATTERN GLASS</p>
<p>THREE FRIENDS ANTIQUES CO. 3930 Broadview Rd. Richfield, OH 44286 Hours: Tues.-Sat. 10-4, Sun. 12-5 Phone 216-659-3930 WE BUY & SELL CAMBRIDGE!</p>	<p>SWISS HILLS COLLECTIBLES Mary & Wilbur Henderson 303 Guilford Avenue Woodsfield, Ohio 43793 Mail & Shows 614-472-1133 SPECIALIZING IN CAMBRIDGE GLASS!</p>	<p>THIS 'N' THAT PLACE 101 South Street Chagrin Falls, Ohio 44022 Lue Koerper 216-247-4938 OPEN THURS. - SAT. 10 AM - 5 PM</p>
<p>WICKFORD ANTIQUE ARCADE 650 Ten Rod Road North Kingstown, RI 02852 The Clausons 401-295-7520 SPECIALIZING IN GLASSWARE</p>		



National Cambridge Collectors, Inc.

P. O. Box 416, Cambridge, Ohio 43725

A nonprofit organization dedicated to the preservation and study of Cambridge Glass

You Are Cordially Invited
To Become A Member Of The
NATIONAL CAMBRIDGE COLLECTORS, INC.

Benefits derived from membership include: receipt of our club publication, The Cambridge CRYSTAL BALL; informative Quarterly Meetings; Antique Shows; Auctions; and other special events.

The Cambridge CRYSTAL BALL is published the first of each month. This newsletter contains educational and interesting articles, questions and answers, information on reproductions and reissues, notices of all club functions, classified advertisements, dealers directory, and many other features of interest to collectors of Cambridge Glass.

Yearly dues are \$10.00 for Individual Members and \$3.00 for each Associate Member. All members have voting rights, but only one issue of the CRYSTAL BALL will be mailed per household.

Name (please print) _____ \$10.00

Mailing Address _____

City _____ State _____ Zip _____

Associate Members: (Must be at least 12 years of age and living in the same household.)

1. Name _____

2. Name _____

3. Name _____

Total number of Associate Members _____ @ \$3.00 each \$ _____

TOTAL AMOUNT ENCLOSED: \$ _____

Please make check payable to: NATIONAL CAMBRIDGE COLLECTORS, INC.

Recommended by _____

FIRST-CLASS MAIL
U.S. POSTAGE
PAID
So. Vienna, Ohio
45369
Permit No. 15

FIRST CLASS MAIL

National Cambridge Collectors, Inc.
P.O. Box #416
Cambridge, Ohio 43725

FOR SALE

PERSONALIZED

PAPERWEIGHTS

INFORMATION ON HOW TO
ORDER CAN BE FOUND ON
PAGE 8 "PROJECTS".