

Cambridge



Crystal Ball

ISSUE NO. 87

JULY 1980

Published monthly by the NATIONAL CAMBRIDGE COLLECTORS, Inc.
To encourage and to report the discovery of the elegant and boundless product
of the Cambridge Glass Company, Cambridge, Ohio

MEMBERSHIP CONTEST WINNER ANNOUNCED!

Membership Chairman, Jo Barstow, has furnished us with the information that the Membership Contest ended May 15th, and a winner has been declared. Mrs. Chester L. (Naomi) Gamble of Cuyahoga Falls, Ohio, won easily with a total of fifteen (15) NEW MEMBERS to her credit! Her prize consists of a "fully paid Registration, for all activities during the 1980 Convention". Our Congratulations are extended to Naomi for a "Job Well Done!".

Naomi's closest competitor was Dort Kilpatrick of Troy, Ohio, who brought in a total of five new members during the year. Three members brought in a total of four new members each, and they were: Joe Andrejcak; Shirley Hartsock; and Al Steele. Marcia Ellis and Shirley Ladouceur brought in three new members each.

Joining in the competition by bringing in two new members each were the following: Dottie Bailey; Lena Barnes; Mrs. E. E. Colahan; Martha Cook; Laurie Cruise; Joy Duvall; Bill Gaston, Frank Maloney; Judi Oestreicher; and Arlyn Ols.

Bringing in one new member each were: Sarah Brown; Jane Carey; Lee Culbertson; Betty Dasen; Pamela Earussi; Marilyn Estock; Norma Godwin; Mrs. Frank Hayes, Jr.; Virginia Houston; Anne Ingram; Noel Jablonski; Kathy Kawalek; Ann Kerr; LaVerne Kiley; Fred McMorrow; Adrian Ownby; Mrs. Lee D. Pirolozze, Sr.; Donald R. Rogers; Eugene Sexton; Gwen Shumpert; Al Springborn; Charles Todd; Edward Trindle; Rosemary Triplett; Rita K. Vinsel; D. P. Westfall; Russell Vogelsong; Mildred Willey; and Edith Zimmerman.

N. C. C. Board of Directors members and their families were not eligible to enter the Contest, but this did not stop several of them from signing up new members during the year. Topping the list was President Bill Smith with a total of fifty (50) new members to his credit. Following his lead was Willard Kolb with eight; Jo Barstow with five; George Hoffman and Arnold Lynd with two each; and Janice Hughes and Frank Wollenhaupt with one each.

Our membership now numbers well over 1,000 and we want to thank not only Naomi, but all of our members who participated in this Membership Contest. Without the cooperation of our members, we can accomplish nothing! (A more complete membership report will be in our August CRYSTAL BALL.)

MEMBERSHIP RENEWAL NOTICE

If the date on your address label is -- **7 - 80**
This is your LAST ISSUE of the
CRYSTAL BALL. Please renew NOW!

CAMBRIDGE CRYSTAL BALL

Official publication of National Cambridge Collectors, Inc., a non-profit corporation with tax exempt status. Published once a month for the benefit of its members. Back issues of the CRYSTAL BALL are available to members only, at a cost of 60¢ each or 12 issues for \$7.

Membership is available for individual members at \$10 per year and additional members (12 years of age and residing in the same household) at \$3 ea. All members have voting rights, but only one CRYSTAL BALL will be mailed per household.

1979-80 OFFICERS & COMMITTEE CHAIRPERSONS

PRESIDENT William C. Smith
 VICE-PRESIDENT Lynn Welker
 SECRETARY Janice Y. Hughes
 TREASURER Ruby Landman
 SERGEANT-AT-ARMS George W. Hoffman
 BUDGET & FINANCE William C. Smith
 BY-LAWS David B. Rankin
 CONVENTION Lynn Welker
 MEMBERSHIP Josephine A. Barstow
 MUSEUM Arnold Lynd
 PROGRAM & ENTERTAINMENT Frank Wollenhaupt
 PROJECT Willard Kolb
 PUBLICITY Don E. Armbrrecht
 STUDY GROUP ADVISORY John F. Rettig

1980 ALL-CAMBRIDGE AUCTION Lynn Welker
 1980 ANTIQUE SHOW William C. Smith

CRYSTAL BALL EDITOR Phyllis D. Smith

CLASSIFIED ADVERTISING RATES

5¢ per word \$1.00 minimum

We cannot mix type size in classified advertisements. Abbreviations and initials will count as words. Payment in full MUST accompany all ads.

DISPLAY ADVERTISING RATES

	Members	Non-Members
1/8 page	\$ 4.00	\$ 6.00
1/4 page	7.00	10.00
1/2 page	12.00	18.00
3/4 page	17.00	25.00
Full page	22.00	33.00

DEALERS DIRECTORY

1" ad \$6.00 for 6 months

Cambridge CRYSTAL BALL assumes no responsibility for items advertised and will not be responsible for error in price, description or other information.

Advertising copy must be in our hands by the 15th of each month to assure publication in our next issue. Advertisements containing reproductions will not knowingly be accepted unless clearly stated.

PLEASE ADDRESS ALL CORRESPONDENCE TO
 CAMBRIDGE CRYSTAL BALL
 National Cambridge Collectors, Inc.
 P.O. Box #416
 Cambridge, Ohio 43725

PLEASE NOTIFY US IMMEDIATELY OF ANY CHANGE
 IN YOUR ADDRESS!

Please enclose a self-addressed, stamped envelope
 when requesting information!!

STUDY Club News

STUDY GROUP #6 - NEW YORK STATE "THE FINGERLAKES"

The Fingerlakes Study Club met May 26th in the home of Don and Shirley Ladouceur with four members present. The business meeting was held and plans to attend the Convention were discussed.

Our July meeting will include a presentation on Nude Stems and Ivy Balls, and our August meeting will consist of a presentation and information about Cambridge Baskets.

Our program was moderated by Don Ladouceur, with information and examples (both actual and also references from the CRYSTAL BALL and NCC reference books) on the flower Figurals and flower Blocks. We were able to assemble eleven examples to examine during our study period.

submitted by Shirley Ladouceur

STUDY GROUP #7 - EASTERN OHIO "THE CAMBRIDGE BUFFS"

The Cambridge Buffs Study Group met June 10th in the home of Pauline and Dean Westfall. There were 11 members present.

Our meeting was on NearCut. Pieces displayed consisted of: Marjorie, Wheatsheaf, Buzz Saw, Strawberry, #2718, Wild Rose-cut, Fernland, Feather, Countess, Plymouth, #2841, #2834, Press-goblet #667, Hanging fishbowl, Snowflake, Weatherford, and an unknown pattern. Some of these pieces were in Carnival.

submitted by Karen Jones



1636
 4½ in. Bird Figure



510/1538/1636
 3 pc. Set



VASES



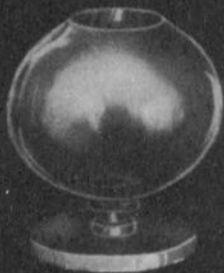
1309—5 in.



3400/102—5 in.
Globe



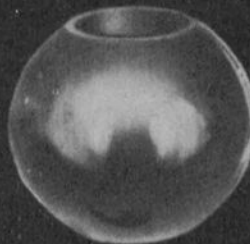
3400/103—6½ in.
Globe



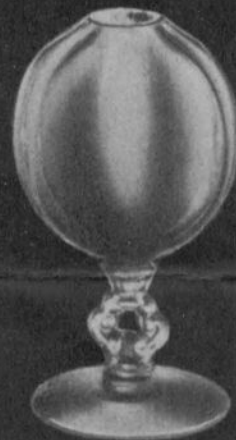
Pristine 422—4 in.
Ivy Ball



Pristine 404—6 in.
Ball Vase



Pristine 402—4½ in.
Ivy Ball



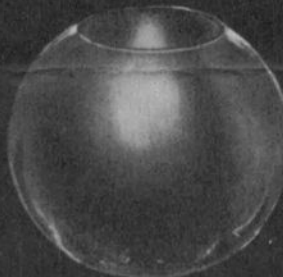
1236—7½ in.
Ftd. Ivy Ball



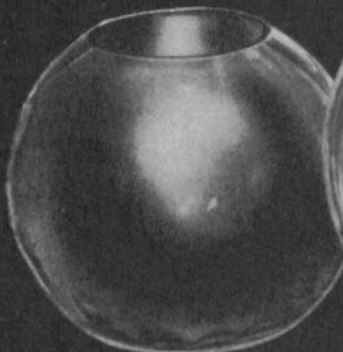
Pristine 423—5 in.
Ftd. Ivy Ball



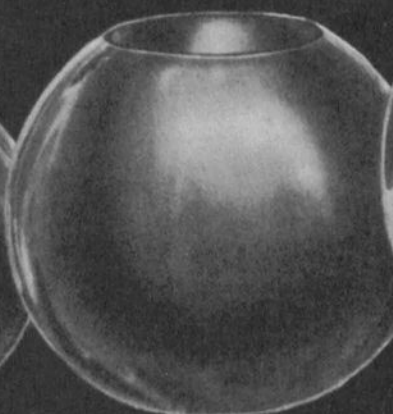
1409—4½ in. Floating Rose Bowl
w/2½ in. Opening



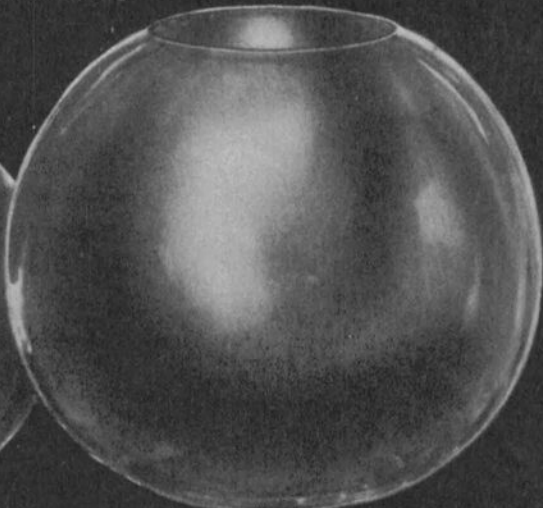
1410—6 in. Floating Rose Bowl
w/3 in. Opening



1411—7 in. Floating Rose Bowl
w/3½ in. Opening



1412—8 in. Floating Rose Bowl
w/4½ in. Opening



1413—10 in. Floating Rose Bowl
w/4½ in. Opening

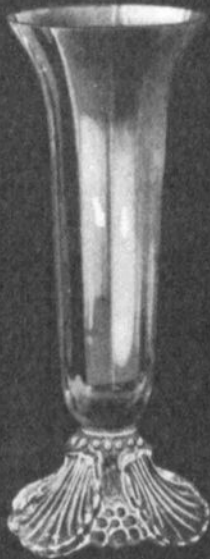
JANUARY 1, 1940



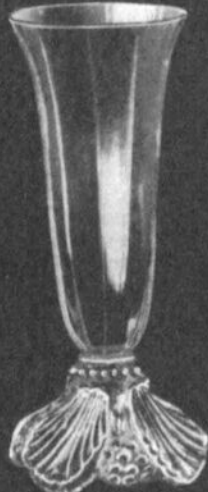
The Cambridge Glass Company



VASES



Shell 49—10½ in.
Belled Vase



Shell 48—9 in.
Belled Vase



Shell 47—9½ in.
Cornucopia Vase



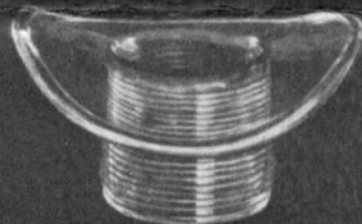
3011/25—4½ in. Ivy Ball
9½ in. Tall



3011/26—4 in. Bird Vase
10½ in. Tall



Shell 44—6 in.
Flower Center



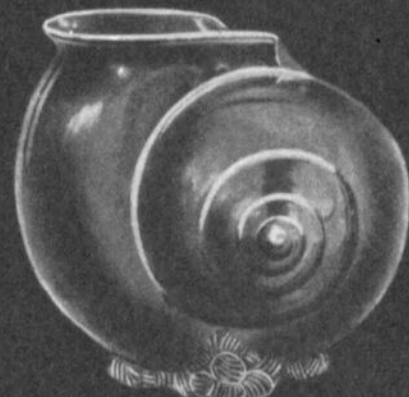
1402/139—10 in.
Top Hat



Shell 42—8 in.
Flower Center



1330 Sweet Potato Vase
w Bracket



Shell 46—7½ in.
Shell Flower Holder

JANUARY 1, 1940

COLLECTING WHISKEY TUMBLERS

by Doris Isaacs

A "Whiskey Tumbler" collection is both fun and inexpensive to put together. The price of the very scarce ones still rarely exceeds \$20, and most are much less.

While you are looking for your favorite etchings, Nearcut patterns, or even a crackle one, be sure not to overlook the crystal and colored ones in such patterns as: Nautilus, Barrel, Pinch, Ball, Mt. Vernon; Caprice and many others. You may also run across the Caprice Alpine in both crystal and color (ref: C.B. #80, Dec. 1979).

Add to the above the many different decorations, cuttings, and etchings, plus the ones found in Farber holders, the Georgian pattern, and stemmed whiskey's, and you can see that the variety is almost endless! Here are a few pictures to help you on your way. Have fun!

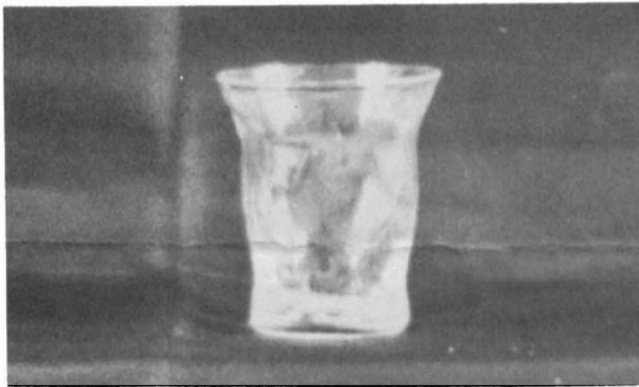


PHOTO #1

The little Whiskey shown in Photo #1 is in the Aero Optic pattern (ref: Weatherman II, pg. 40). It is in the willow blue color and was found in a cabinet containing salts and repro swans.



PHOTO #2

Photo #2 shows an amber whiskey tumbler with Apple Blossom etching. We were lucky enough to find this one at one of the N.C.C. Shows.

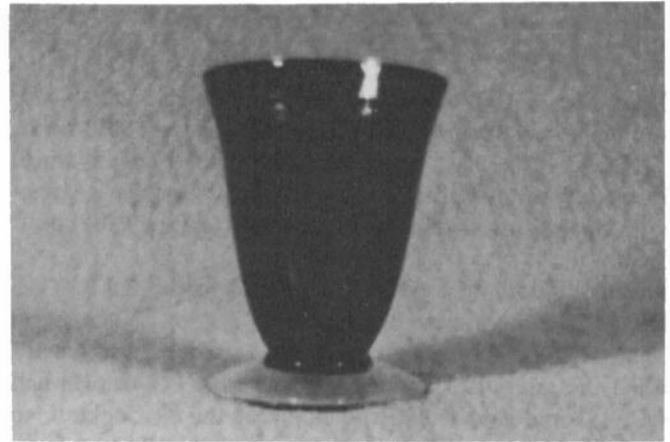


PHOTO #3

The #731 etching doesn't show up in Photo #3 on the carmen with crystal foot. But you can check the N.C.C. 1930-34 Catalog Reprint on page C for the etch. This is the only one we've seen, and we treasure it even tho it does have a small nick on the foot.



PHOTO #4

Photo #4 pictures from left to right: willow blue Aero Optic; crystal with Gloria etching, crystal etched Marjorie with gold rim; and gold krystol crackle.

The Gloria etched one has a paper inside to help show the pattern. Look closely and note how small it is. It was purchased thru the *Depression Daze* from an N.C.C. member/dealer. The etched Marjorie was bought at an estate Auction near Zanesville. The crackle one was in the 1979 N.C.C. Auction.

[EDITOR'S NOTE: It is with a great deal of pleasure that we are able to inform you that Doris and Roy Isaacs have moved back to Cambridge, Ohio, after living in California the past two years. They have been greatly missed and we are happy to "WELCOME" them home again!]

WE GET LETTERS!

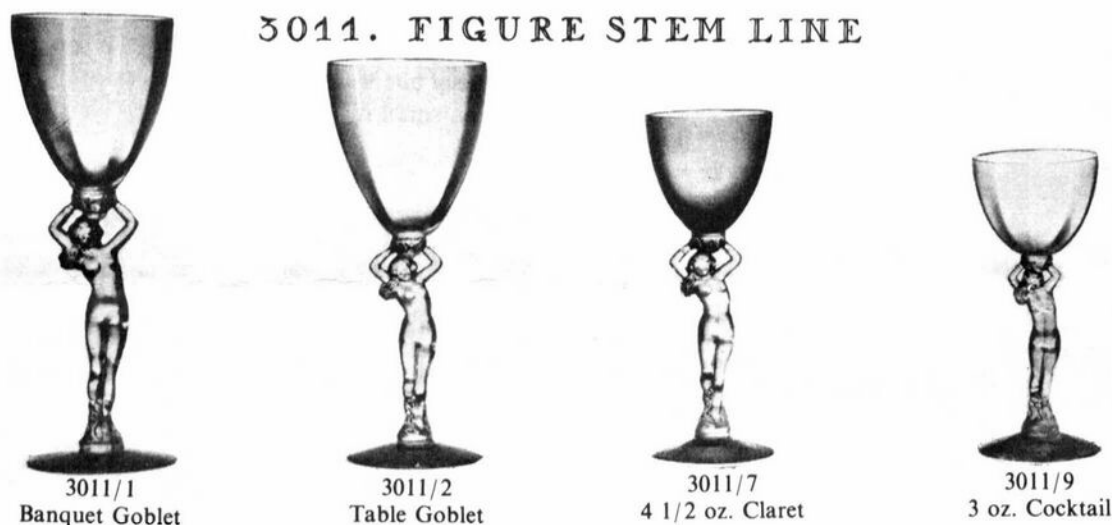
"Dear Sir: I think it would be a valuable service if you would publish the physical dimensions of the #3011 series on N.C.C. I, pg. 34-2. Specifically the overall height, width of top of bowl, depth of bowl, etc. Just capacity is sometimes misleading. I refer to items #3011/1 thru #3011/14.

Recently I bought a piece from an ad in the CRYSTAL BALL. The item was listed as a 4 1/2 oz. Nude Stem Cocktail! I am not aware of a 4 1/2 oz. Cocktail so when I called the advertiser assured me it held 4 1/2 oz. He had N.C.C. I and said it had the shape of the #9 Cocktail, so he decided it was a #7 Claret because it held 4 1/2 oz. I was looking for a Claret so I bought it. On receipt I found it was a #9 Cocktail - which when brimful actually holds 4 oz.

inch difference in each size is due to the hand finishing. The stems are measured from the bottom of the stem foot (not the figure's foot) to the top of her hands, just under the bowl. The comports might measure just a bit taller because of the way they are finished.

The article continued with the information that the items found on the smaller (4 1/4" to 4 1/2") stem included the #8 thru #14 bowls, the middle size (5 1/4" to 5 1/2") stem included the #2 thru #7 bowls, and the larger (6 1/4" to 6 1/2") stem included the #1 Banquet Goblet, and several of the other items such as the candlesticks, comports, etc.

It would seem to me that one answer to the problem you encountered when trying to order by mail would be solved (or at least helped) by asking for the measurement of the height of the Stem. It will not always answer all of the questions that can be involved, but you could at least be



Apparently many dealers, and novice collectors of this line are not certain as to identification. I think my request would be a valuable service to Club members like myself. Would appreciate your consideration. Sincerely, Lenora McNabb, CA"

Dear Lenora: In Issue #42 (October 1976) Frank and Vicki Wollenhaupt contributed a very informative article to the CRYSTAL BALL concerning this very subject. It would be almost impossible to give exact measurements for the bowls on these Nude stems, as they each vary slightly. I feel sure the workers tried to be exact, but with the hand finishing required, it was not possible. (If any of our members know of a fool proof answer to this problem, please write and let us know.)

However, there may be an easier solution to this problem. According to the article by the Wollenhauts, "The Nude figure was made in three different sizes - 4 1/4" to 4 1/2"; 5 1/4" to 5 1/2"; and 6 1/4" to 6 1/2". The small quarter

sure it would not be a Claret if the measurement was not in the 5 1/4" to 5 1/2" range. May I suggest that any member interested in additional information on this subject order this back issue of the CRYSTAL BALL. The price is only 60¢ per single copy. (See page 2 of this issue for additional information concerning back issues.)

One other interesting point that seems to cause a lot of confusion with both dealers and collectors alike is the difference between the Banquet Goblet and the Table Goblet. The Banquet Goblet is very hard to find, in fact to my knowledge there are very few known to exist at this time. Everyone seems to think their Table Goblet is in fact a Banquet Goblet - but this is not the case. Measure the stem as explained above and if it measure 6 1/4" to 6 1/2" it is a Banquet Goblet. If it measures 5 1/4" to 5 1/2" it is the slightly more common Table Goblet.

Do hope this information will be of help to you and other members. Thank you so much for writing. We need more suggestions of this kind from our members. Phyllis

National Cambridge Collectors, Inc.
Statement of Operating Income and Expenses
For the Years ended December 31, 1979 and 1978

	<u>December 31</u> 1979	<u>December 31</u> 1978
Income:		
Prorated membership dues	\$ 7,047.40	\$ 5,437.69
Advertising	868.95	857.33
Sale of back issues of Crystal Ball	391.80	382.40
Other	<u>286.68</u>	<u>(412.05)</u>
Total income	<u>8,594.83</u>	<u>6,265.37</u>
Expenses:		
Advertising	518.84	414.23
Office supplies	244.62	312.23
Postage and box rental:		
Newsletter	2,250.28	1,655.06
Other	302.83	246.37
Printing Crystal Ball	2,120.30	1,212.11
Other	<u>362.69</u>	<u>319.52</u>
Total expenses	<u>5,799.56</u>	<u>4,159.52</u>
Net operating income	2,795.27	2,105.85
Beginning Operating Fund Balance	<u>5,908.12</u>	<u>3,802.27</u>
Ending Operating Fund Balance	<u>\$ 8,703.39</u>	<u>\$ 5,908.12</u>

National Cambridge Collectors, Inc.
Statement of Museum Income
For the Years Ended December 31, 1979 and 1978

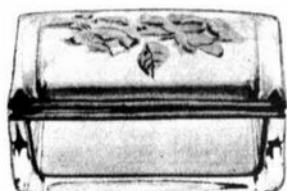
	<u>December 31</u> 1979	<u>December 31</u> 1978
All Cambridge Glass Auction	\$ 1,182.78	\$ -
Antique Show	1,441.17	1,419.15
Book sales, net	1,825.14	4,002.68
Donations	649.73	131.28
Interest	3,139.17	1,580.41
Other	20.64	322.80
Royalties	<u>2,064.00</u>	<u>1,836.00</u>
Net income to museum fund	10,322.63	9,292.32
Beginning Museum Fund Balance	<u>28,787.15</u>	<u>19,494.83</u>
Ending Museum Fund Balance	<u>\$ 39,109.78</u>	<u>\$ 28,787.15</u>

National Cambridge Collectors, Inc.
Comparative Balance Sheets
At December 31, 1979 and 1978

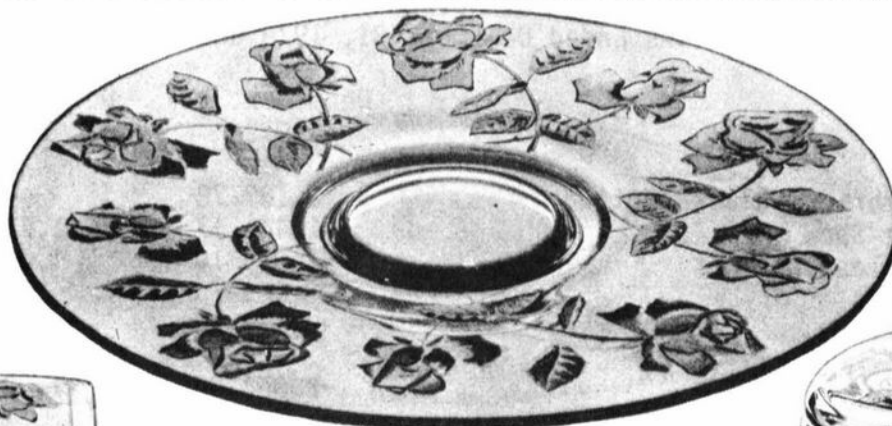
Assets	December 31 1979	December 31 1978
Cash:		
Operating funds	\$ 1,297.03	\$ 977.36
Invested	48,509.29	35,977.58
	49,806.32	36,954.94
Receivables	79.50	74.86
Book inventory	3,246.84	1,580.99
Museum display assets	883.47	832.47
Other assets	1,016.87	1,592.94
Total assets	\$ 55,033.00	\$ 41,036.20

Liabilities and Members' Equity

Accounts payable	\$ 3,120.43	\$ 2,795.38
Deferred membership dues	3,943.40	3,431.55
Other deferred income	156.00	114.00
Total liabilities	7,219.83	6,340.93
Members' equity:		
Operating fund	8,703.39	5,908.12
Museum fund	39,109.78	28,787.15
Total members' equity	47,813.17	34,695.27
Total liabilities and members' equity	\$ 55,033.00	\$ 41,036.20



747
Cigarette Box & Cover



P. 125
14 in. Plate

GOLD DECORATED
D/1063 (Talisman Rose)



306
6 in. Candy Box & Cover
(Cut Knob)



No. 3625 - 5 OZ. FTD TUMBLER



No. 3625 - 10 OZ. FTD TUMBLER



No. 3625 - 1 OZ. CORDIAL



No. 3625 - 10 OZ. GOBLET



No. 3625 - 7 OZ. TALL SHERBET



No. 3625 - 4 1/2 OZ. CLARET



No. 3625 - 2 1/2 OZ. WINE



No. 3625
4 1/2 OZ. OYSTER COCKTAIL



No. 3625 - 12 OZ. FTD ICE TEA



No. 3900/19
2-PIECE MAYONNAISE SET



No. 3625 - 7 OZ. LOW SHERBET



No. 3625 - 3 OZ. COCKTAIL



No. 3600 - 10 OZ. GOBLET CHANTILLY





No. 3500/161
3 1/2" TALL COMFORT



No. 3500 - 7 OZ. TALL SHERBET



No. 3500 - 7 OZ. LOW SHERBET



No. 3500 - 5 OZ. COCKTAIL



No. 3500 - 2 1/2 OZ. WINE



No. 3500 - 4 1/2 OZ. CLARET



No. 3500
13 OZ. FOOTED TALL ICE TEA



No. 3500
10 OZ. FOOTED TUMBLER

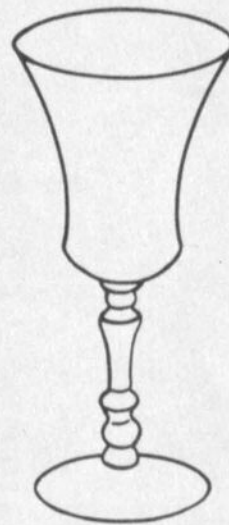
Rose Point



No. 3121 - 2 1/2 OZ. WINE



No. 3500
4 1/2" OYSTER COCKTAIL



No. 3500 - GOBLET



No. 3500 - 1 OZ. CORDIAL



No. 3500
5 OZ. FOOTED TUMBLER



No. 3500 - 5 OZ. CAFE PARFAIT



THE CAMBRIDGE GLASS COMPANY, CAMBRIDGE, OHIO, U. S. A.



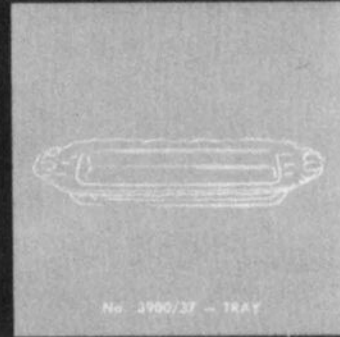
No. 3121 — 2 1/2 OZ. WINE

No. 3121 — GOBLET

ROSE POINT



No. 3900/38 IND.
2 PC. SUGAR & CREAM

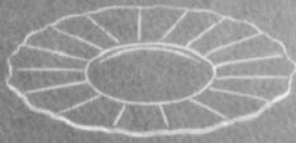


No. 3900/37 — TRAY



No. 3900/40 IND.
SUGAR AND CREAM

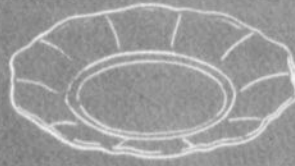
Chantilly Rose Point Wildflower



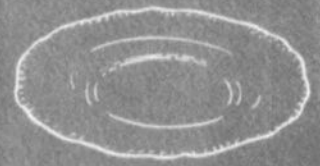
No. 3900/26
12" 3-FOOTED PLATE



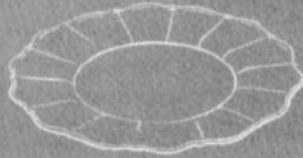
No. 3900/19
2-PIECE MAYONNAISE SET



No. 3900/20
6 1/2" BREAD & BUTTER PLATE



No. 3500/167
7 1/2" SALAD PLATE
No. 3500/5 - 8 1/2" SALAD PLATE



No. 3900/24
10 1/2" DINNER PLATE



No. 3900/22 - 8" SALAD PLATE



No. 3900/135 - 5" COMPORT



No. 3900/671 - ICE BUCKET,
CHROME HANDLE



No. 3900/135
13 1/2" CHEESE AND CRACKER



No. 1532 - 3 PC. MAY SET



No. 3900/17 - CUP AND SAUCER



No. 968 - 2 PC. COCKTAIL ICER



THE CAMBRIDGE GLASS COMPANY, CAMBRIDGE, OHIO, U.S.A.

**Erie's Second Annual
Glass Show and Sale**

Featuring
Cambridge, Duncan & Miller, Heisey
And Including
Glass Of All Periods

August 23 & 24, 1980
Sat. 1 p.m. - 9 p.m.—Sun. Noon - 6 p.m.

Hilton Hotel • Erie, PA
10th & State Streets
(I-90 Exit 6 • 6 Miles North on Peach Street)

Special Guest:
Heisey Collector's of America
Representative

Admission 1.75 25¢ Discount with this ad
Children under 12—Free Door Prize Each Day

Promotion by: Hank Pugliese (814) 456-7131
2947 Zimmerman Rd. Erie, PA

GUILLOCHE: *see Chain.*

GUM RESIN is a group of vegetable substances which are obtained from the leaves, bark, and roots of plants. Balsam of this group and is used in the solution, which is used in the coating of glassware, to protect it during the etching process.

HAND-BLOWN: *see free-blown.*

HEAT RESISTANCE - Our Salad Plates, Cups & Saucers, Vegetable Dishes, and other pieces, supposed to stand heat, are annealed very carefully and thoroughly so that they will stand the ordinary usage they are intended for.

CAT'S MEOW

P.O. Box 27001, Dimond Sta.
Oakland, CA 94602
Phone: 415-531-5197

- | | |
|---|----------|
| 1. Honeycomb Bowl, 9½", rubina (B-26-3-1) ... | \$135.00 |
| 2. Basketweave Vase, 10", rubina (B-33-3-3) ... | 165.00 |
| 3. Doric Column Candlesticks, ivory,
gold worn, pr. | 195.00 |
| 4. Blue Jay Flower Frog | 145.00 |
| 5. Tally-Ho, twin Mayo & Underplate,
emerald green | 25.00 |
| 6. #1297 Vase, 11", emerald green w/crystal foot
(B-10-1-1 for shape only) | 45.00 |
| 7. Swan, crystal, 6½" | 28.00 |
| 8. Ivy Ball, keyhole stem, crown tuscan (B-16-1-3) | 40.00 |
| 9. #3400/38 Tumblers, 9 oz., emerald green (4) ea. | 8.50 |

PRICES EACH - P & I EXTRA - PLEASE CALL AFTER 5 PM PDT

DEFINING GLASS TERMS

courtesy of Charles Upton

FIRE POLISHING: *reheating of finished vessels to obliterate marks left by tools or molds and to obtain a smooth even surface. This method was used widely at the Cambridge Glass factory.*

FLINT GLASS: *(1) metal made with the silica of flints reduced to a powder or made friable by calcination. (2) lead glass, metal made with oxide of lead as the flux and sand as the silica.*

FLUX: *an alkaline or metallic substance, such as potash and carbonate of soda and oxide of lead, added to the batch to fuse the silica.*

FLY: *the breaking into pieces of a vessel, caused by too sudden cooling.*

FOREST GREEN - *Articles made in this color have a cool green shade, reminding one of spring-time forests, from which the color was named.*

FOUND: *the time taken for melting the batch, from the charge until the molten metal is ready to work.*

FREE-BLOWN GLASS: *glass formed by blowing and manipulation with the tools of the craft, without the aid of molds. This technique was used quite extensively by the Cambridge Glass Company.*

FRIGGER: *an experimental or apprentice piece.*

FRIT: *partially fused ingredients for the metal, formed in the calcar and kept on hand for melting; also synonymous with batch.*

FULL-SIZE PIECE MOLD: *mold composed of two or more pieces and the approximate size of the finished article.*

GADROON, OR GADROONING: *molded deep rounded flutes or ribbing impressed on a second short layer of glass which was formed by attaching a pearl or purl to the end of a parison and pulled up over it. The name of a Cambridge pattern, pattern #3500, which resembles the above type process but was done in the mold itself.*

GAFFER: *master blower, head of a shop.*

GATHER: *the blob of molten metal secured on the end of the blowpipe.*

GATHERER: *assistant to the gaffer who makes the gather on the blowpipe.*

GLASS GALL (sandever): *porus scum formed on the surface of the melting batch by salts in the alkalis and having no affinity for silica, or by wrong proportions of ingredients.*

GLASSMAKERS' SOAP: *black oxide of manganese which, added to the batch in the proper proportions, neutralizes the natural color of the metal.*

GLASS POTS: *see melting pots.*

GLORY HOLE: *small furnace used instead of the boccas or working holes for the frequent reheatings necessary during the processes of manipulation and for fire polishing.*

GREEN GLASS: *glass in its natural color; neither rendered colorless nor artificially colored; generally made from coarser and less pure materials than those used for fine wares; principal alkaline base, soda or potash; second base, usually some form of lime; also called bottle glass.*

DEALERS



DIRECTORY

NOTE: When writing to the Dealers listed here, please enclose a SASE!

<p>EVELYN M. ALLEN 135 Cynthia Street Heath, Ohio 43055 Mail Order & Shows 614-522-1635 SPECIALIZING IN CAMBRIDGE GLASS!</p>	<p>BENICIA ANTIQUE SHOP 305 First Street Benicia, California 94510 OPEN 11 AM - 5 PM Closed Monday Z. E. LOPES 707-745-0978 VISIT HISTORIC BENICIA and its 28 shops Off Interstate #80 North of San Francisco</p>	<p>CHARLES MIKULIK Box 416 Elizabeth, N.J. 07207 — COLLECTOR — Always paying good prices for CAMBRIDGE CAPRICE in all colors 201-372-1101 CARRY MOST TYPES OF ANTIQUES</p>
<p>BLACK ROOSTER ANTIQUES 1018 Clark Street Cambridge, Ohio 43725 614-432-3202 M. Sipe CAMBRIDGE GLASS - GENERAL LINE</p>	<p>COLLECTORS II 414 S. Washington Olympia, WA 98501 Ruby Gilmer & Pauline Christensen 206-754-7808 GLASSWARE — POTTERY — COLLECTIBLES</p>	<p>COYLE & SCHUSTER ANTIQUES Box 982 - Ph. 614-349-7362 Newark, Ohio 43055 Shows & Mail Order BUY & SELL - CAMBRIDGE - HEISEY</p>
<p>BERKELEY ANTIQUES 69 Berkeley St. Boston, MA 02116 George or Frank 617-426-1048 CAMBRIDGE, HEISEY, GENERAL LINE</p>	<p>D & D ANTIQUES 184 East Kossuth Street (GERMAN VILLAGE) Columbus, Ohio 43206 DICK SLIFKO 614-443-6020</p>	<p>D'MARIE'S ANTIQUES US Rt. 1 - just South of Rt. 606 Thornburg, Virginia 22565 703-582-6220 Jim Rankin OPEN EVERY DAY 10 AM to 6 PM</p>
<p>D & D ANTIQUES 184 East Kossuth Street (GERMAN VILLAGE) Columbus, Ohio 43206 DICK SLIFKO 614-443-6020</p>	<p>D'MARIE'S ANTIQUES US Rt. 1 - just South of Rt. 606 Thornburg, Virginia 22565 703-582-6220 Jim Rankin OPEN EVERY DAY 10 AM to 6 PM</p>	<p>FINDER'S KEEPER'S ANTIQUES P.O. Box 303 Dayton, O. 45401 513-254-2937 P.O. Box 16023 Columbus, O. 43216 614-885-2726 SPECIALIZING IN CAMBRIDGE GLASS!</p>
<p>THE GLASS CUPBOARD 39 Shire Oaks Drive Pittsford, New York 14534 Marcia Ellis 716-586-7596 CAMBRIDGE ONLY SASE FOR LIST</p>	<p>GEORGE HOFFMAN ANTIQUES 129 South 4th Street Newark, Ohio 43055 614-345-8021</p>	<p>'OUR GLASS ANTIQUES Box 27, Wills Point, Texas 75169 20th CENTURY COLLECTIBLES featuring CAMBRIDGE GLASS! Shows - No Lists - SASE Please PAUL & GINNY HENDERSON 214-563-6971</p>
<p>LASHER ASSOCIATES 119 Water St. Gaithersburg, Md. 20760 Faith Lasher 301-977-8296 SPECIALIZING IN GLASSWARE</p>	<p><i>YOU CAN ADVERTISE YOUR ANTIQUE SHOP HERE!</i> 1 inch - \$6 for six months</p>	<p>1886 HOUSE East Schodack, N.Y. 12063 MAIL and SHOWS Laurie Cruise 518-477-5895 CAMBRIDGE - NORITAKE - AZALEA - D.G.</p>
<p><i>YOU CAN ADVERTISE YOUR ANTIQUE SHOP HERE!</i> 1 inch - \$6 for six months</p>	<p>ROLLING ACRES ANTIQUES 66484 N. 8th Street Road Cambridge, Ohio 43725 Sandy Jenkins & Anne Ingram 614-432-2570 CAMBRIDGE & GENERAL LINE ANTIQUES</p>	<p>BILL & SHARON PHILLIPS 21730 Friday Euclid, Ohio 44123 Ph. 216-261-4665 Shows Only BUYING GLASS, ANTIQUES, ETC.</p>
<p>CHARLES A. SHAW Glenwood Gardens - R.V.W.1B Yonkers, NY 10701 AMERICAN GLASS — 914-476-5175 SHOWS & MAIL ORDER!</p>	<p>AL STEELE Westerville, Ohio 614-882-6483 or 614-882-7124 Mail Orders and Shows Only HEISEY — CAMBRIDGE — PATTERN GLASS</p>	<p>SWISS HILLS COLLECTIBLES Mary & Wilbur Henderson 303 Guilford Avenue Woodsfield, Ohio 43793 Mail & Shows 614-472-1133 SPECIALIZING IN CAMBRIDGE GLASS!</p>
<p>THREE FRIENDS ANTIQUES CO. 3930 Broadview Rd. Richfield, OH 44286 Hours: Tues.-Sat. 10-4, Sun. 12-5 Phone 216-659-3930 WE BUY & SELL CAMBRIDGE!</p>	<p>THIS 'N' THAT PLACE 101 South Street Chagrin Falls, Ohio 44022 Lue Koerper 216-247-4938 OPEN THURS. - SAT. 10 AM - 5 PM</p>	<p>WICKFORD ANTIQUE ARCADE 650 Ten Rod Road North Kingstown, RI 02852 The Clausons 401-295-7520 SPECIALIZING IN GLASSWARE</p>

St. Lawrence

SECOND ANNUAL
BASH
SHOW AND SALE

MEET THE GLASS REVIEW STAFF:

- * Barbara Shaeffer - CA
- * Publisher/Editor - OH
- * William Heacock - OH
- * Associate Editor
- * Gwen Shumbert - MS
- * Feature Editor
- * Contributing Editors:
- * Gail Krause - PA
- * Clarence Vogel - OH
- * Leonard Padgett - MI
- * Dr. James Measell - MI
- * Fred Bickenhuser - OH
- * Feature Writers:
- * Phyllis Smith - OH
- * Bette Weher - FL
- * Roserita Ziegler - CT
- * Audrey Humphrey - OH
- * Steve Jennings - WV
- * Grace Allison - OH

AUG. 22-23-24 * STRONGSVILLE, OHIO

Located between Akron & Cleveland
HOLIDAY INN * I-71 & Rt 82
exit 10 South off Turnpike

SHOW HOURS:

FRIDAY PREVIEW — 7 p.m. to 10 p.m.
Preview Admission - \$3.50

SAT. & SUN. — 11 a.m. to 5 p.m.
Admission - \$2.50

(Sat. or Sun. Adm. \$2 w/ad)

NOTE: Seminars begin 10 a.m. Sat. & Sun.

GUEST SPEAKERS:

- * William Heacock - "Fenton Art Glass - The First Fifty Years: 1905-1955"
- * Fred Bickenhuser - "Tiffin Glass - The Last Frontier of Colored Glass Collecting"
- * Roserita Ziegler - "Post 1950 Collectible Glass With An Investment Future"
- * Edna Barnes - "Degenhart Glass: 1947-1978"
- * Dr. James Measell - "There's More To Collecting Glass Than Just Collecting Glass"
- * Leonard Padgett - "Fakes and Trademarks"

* Selected glass dealers offering a variety of glass treasures for sale — Antique to Contemporary: pressed, cut, depression, Art, Heisey, Cambridge, Fostoria, Carnival, Durcan, Fenton, Boyd, Summit, New Martinsville, Imperial, L.G. Wright, St. Clair, Morgantown, Degenhart, etc.

DISPLAY: OPEN GLASS SALTS representing dozens of glass factories shown by Irene Bobrowicz, charter member of New England Society of Open Salts, Inc.

FREE GLASS IDENTIFICATION: Bring your glass "mysteries" for our staff of writers to help identify - limit 2 items - no appraisals

BANQUET SPEAKERS — AUGUST 23 — 7 p.m.

- * Dr. James Measell - Author of *Greentown Glass*
- "There's More To Collecting Glass Than Just Collecting Glass"
- * Mr. Leonard Padgett - Author of *Pairpoint Glass*
- "Glass Fakes And Trademarks"

ADVANCE RESERVATIONS NEEDED — \$15 PER PERSON

Presented by GLASS REVIEW, the all glass magazine devoted to "Keeping Glass Collectors Informed", P.O. Box 2315, Costa Mesa, CA 92626 or call Barbara Shaeffer at (714) 642-7636.

FIRST-CLASS MAIL
U.S. POSTAGE
PAID
So. Vienna, Ohio
45369
Permit No. 15

FIRST CLASS MAIL

National Cambridge Collectors, Inc.
P.O. Box #416
Cambridge, Ohio 43725

HAPPY 4th of July

The four cornerstones of character on which the structure of this nation was built are: Initiative, Imagination, Individuality and Independence.

Capt. Edward V. Rickenbacker

A nation is made great, not by its fruitful acres, but by the men who cultivate them; not by its great forests, but by the men who use them; not by its mines, but by the men who build and run them. America was a great land when Columbus discovered it; Americans have made of it a great nation.

Lyman Abbott