

Cambridge

Crystal Ball



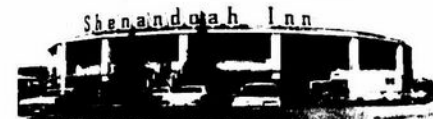
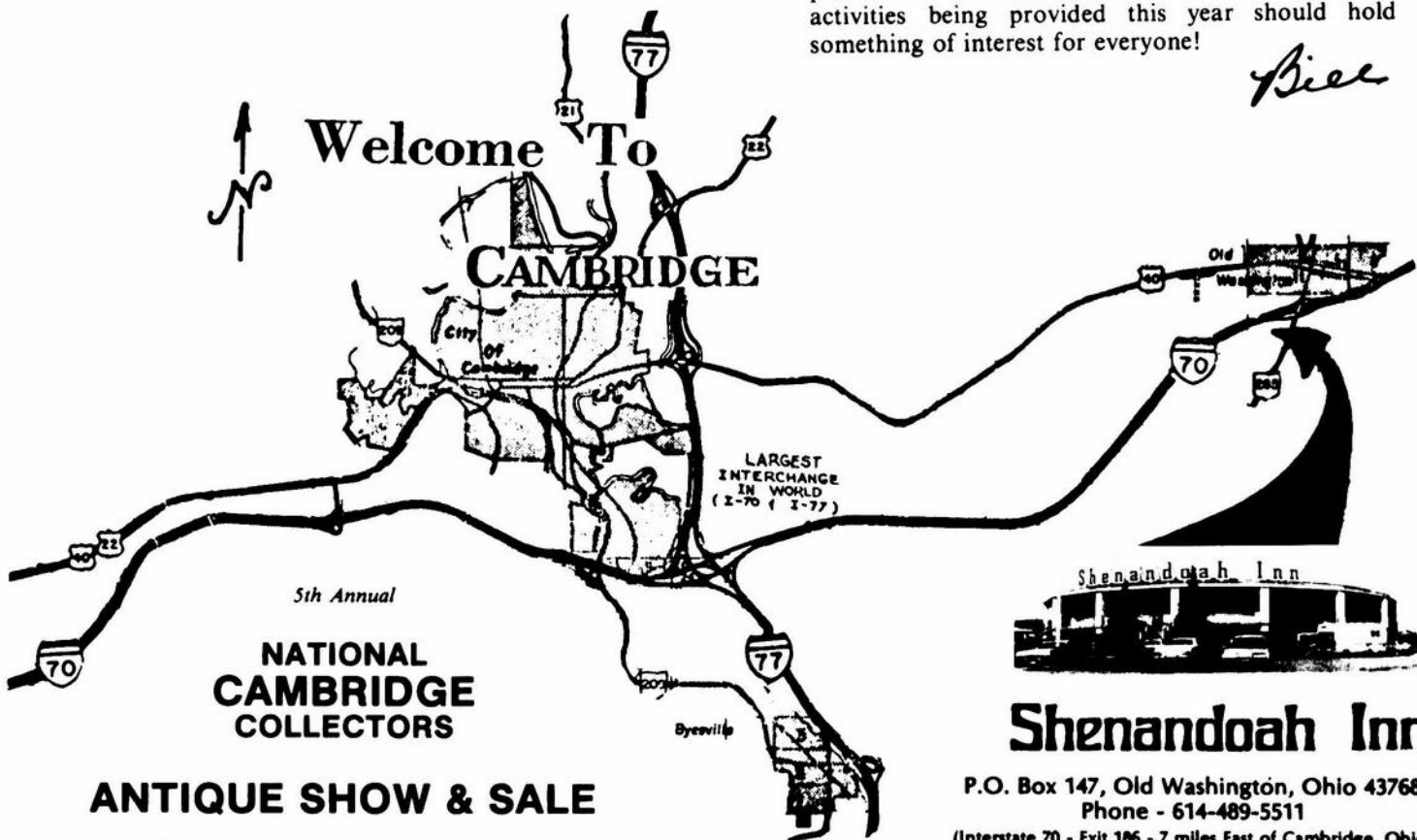
ISSUE NO. 86

JUNE 1980

Published monthly by the NATIONAL CAMBRIDGE COLLECTORS, Inc.
 To encourage and to report the discovery of the elegant and boundless product
 of the Cambridge Glass Company, Cambridge, Ohio

Looking forward to seeing as many of you as possible at our Convention and Show! The many activities being provided this year should hold something of interest for everyone!

Bice



Shenandoah Inn

P.O. Box 147, Old Washington, Ohio 43768
 Phone - 614-489-5511

(Interstate 70 - Exit 186 - 7 miles East of Cambridge, Ohio)

MEMBERSHIP RENEWAL NOTICE
 If the date on your address label is - - **6 - 80**
 This is your **LAST ISSUE** of the
CRYSTAL BALL. Please renew NOW!

JUNE 27, 28, 29, 1980

CAMBRIDGE CRYSTAL BALL

Official publication of National Cambridge Collectors, Inc., a non-profit corporation with tax exempt status. Published once a month for the benefit of its members. Back issues of the CRYSTAL BALL are available to members only, at a cost of 60¢ each or 12 issues for \$7.

Membership is available for individual members at \$10 per year and additional members (12 years of age and residing in the same household) at \$3 ea. All members have voting rights, but only one CRYSTAL BALL will be mailed per household.

1979-80 OFFICERS & COMMITTEE CHAIRPERSONS

PRESIDENT William C. Smith
VICE-PRESIDENT Lynn Welker
SECRETARY Janice Y. Hughes
TREASURER Ruby Landman
SERGEANT-AT-ARMS George W. Hoffman
BUDGET & FINANCE William C. Smith
BY-LAWS David B. Rankin
CONVENTION Lynn Welker
MEMBERSHIP Josephine A. Barstow
MUSEUM Arnold Lynd
PROGRAM & ENTERTAINMENT Frank Wollenhaupt
PROJECT Willard Kolb
PUBLICITY Don E. Armbrecht
STUDY GROUP ADVISORY John F. Rettig

1980 ALL-CAMBRIDGE AUCTION Lynn Welker
1980 ANTIQUE SHOW William C. Smith

CRYSTAL BALL EDITOR Phyllis D. Smith

CLASSIFIED ADVERTISING RATES

5¢ per word \$1.00 minimum
We cannot mix type size in classified advertisements. Abbreviations and initials will count as words. Payment in full MUST accompany all ads.

DISPLAY ADVERTISING RATES

	Members	Non-Members
1/8 page	\$ 4.00	\$ 6.00
1/4 page	7.00	10.00
1/2 page	12.00	18.00
3/4 page	17.00	25.00
Full page	22.00	33.00

DEALERS DIRECTORY

1" ad \$6.00 for 6 months

Cambridge CRYSTAL BALL assumes no responsibility for items advertised and will not be responsible for error in price, description or other information.

Advertising copy must be in our hands by the 15th of each month to assure publication in our next issue. Advertisements containing reproductions will not knowingly be accepted unless clearly stated.

PLEASE ADDRESS ALL CORRESPONDENCE TO

CAMBRIDGE CRYSTAL BALL
National Cambridge Collectors, Inc.
P.O. Box #416
Cambridge, Ohio 43725

PLEASE NOTIFY US IMMEDIATELY OF ANY CHANGE
IN YOUR ADDRESS!

Please enclose a self-addressed, stamped envelope
when requesting information!!

STUDY Club News

STUDY GROUP #3 - SOUTHERN FLORIDA "THE FLORIDA EVERGLADES"

The Florida Everglades Study Group met at the home of Paula Marks on March 18th. We had 10 members and one guest present.

We discussed Cambridge in Farberware. Articles from the "Crystal Ball" were used to help learn more about the various items that were on display. We also discussed the differences in the two kinds of holders that were there. Also we found out which lines were the more common ones in Farberware.

Following our program, we discussed the up-coming convention in Ohio. Several of our members are planning to attend again this year.

Next month our meeting will be held at the home of Mark Nye.

Submitted by Luene Brandt

STUDY GROUP #7 - EASTERN OHIO "THE CAMBRIDGE BUFFS"

The Cambridge Buffs met May 14th in the home of Tom and Deanne Gray. There were 11 members and 1 guest present.

Tom & Deanne displayed several different colors and shapes in the Cambridge Georgian Line. We also compared these to Fenton & Paden City Georgian items.

The highlights of our "Show & Tell" were: a tall Feather juice pitcher; Marjorie cruet and syrup; a ftd tall creamer or syrup in the #3400/39 lines; a Carmen Tally-Ho bottom for cigarettes; a lt. green frosted #130 ind. ashtray with gold band; and a 4 ftd 3½" Nut Cup with #611 engraving.

Next meeting will be at Pauline & Dean Westfall's on June 11th.

Submitted by Karen Jones

STUDY GROUP #8 - SOUTHERN MICHIGAN "THE MICHIGAN CAPRICES"

The Michigan Caprices met April 27 at Ray and Clara Brown's home in Burton, Michigan. A slide presentation of the last two NCC Conventions was viewed by the members.

The Browns displayed a 12" royal blue Japonica Vase recently purchased at a local Antique Show, and also an amethyst Seashell pattern three piece Console set.

Donna Lick, the newest member, from Mt. Pleasant brought a box of miscellaneous glass for the members to identify. Everyone participated in this and several Cambridge items were found.

continued on page 14

THE LION BOOKENDS ARE COMING!

by Willard Kolb
Project Chairman

Hopefully the fulfillment of a promise we made you about eight months ago, is finally going to become a reality. Lucile Kennedy has notified us that the Lion Bookend will go into production and will be ready in time for Convention. The color will be amber. It will be marked "NCC 1978 L.I.G." The reason for the 1978 is, we hope, to keep these in a series. The Lady Legs were marked 1977. It is our hope to get caught up and issue them in the proper year, before we run out of bookends.

We hope everyone will be as anxious to get their order in early as they have been anxious to see them made. We all owe, Lucile Kennedy, Sales Manager; Rich Crow, Production Manager; and Lenox Imperial, a lot of thanks for being so much help. They have also told us that we can take pictures of the production and these we will have ready for showing at Convention.

Now then, we did not "contract" for enough so that each member could have one! Many factors entered into this decision and for this reason they will be limited to one bookend per member (either master member or associate member). Another factor that will enter into the quantity we receive is the difficulty Imperial may encounter in production since this Lion mold is old and not in the best operating condition. We really have no way of knowing, at this time, just how many bookends will be received.

What we are saying is, there is no way of knowing whether there will be enough to go around, so they will be distributed on a "first come-first served" basis. Your order form is attached to the front of this CRYSTAL BALL. One bookend per member (master or associate) at \$25.00 plus \$2.00 postage and handling. If you wish to pick your bookend up at Convention you can save the postage. Orders must be postmarked on or before June 20th so that we will have time to receive and process them prior to any sales made at the Convention. If there are any remaining at Convention time, we will offer them at the same price of \$25.00 to any member who has not already ordered one. This mail order cut-off date will assure that we do not over-sell the quantity that we receive from Imperial. After June 29th (last day of Convention) they will go to \$30.00 plus \$2.00 postage and handling.

Don't wait to buy one at Convention or later at \$30.00 each. Remember we have over 1,000 members, there will be a limited supply, and although these are bookends, they are also an animal which everyone seems to collect. Please get your order in early to better assure that you will get one, and it will also help us greatly in distributing them.

Think Cambridge, but buy a Lion!

"The difference between you and other people is that their money looks bigger and their troubles smaller."

HELEN F. JAMESON

SEVENTH ANNUAL CONVENTION

National Cambridge Collectors, Inc.

June 27, 28, 29, 1980

ALL CONVENTION ACTIVITIES
will be held in the

SHENANDOAH INN
P.O. Box 147, Old Washington, Ohio 43768
(Interstate 70 - Exit 186 - 7 Miles East of Cambridge, Ohio)

Phone - 614/489-5511

SCHEDULE OF EVENTS

FRIDAY, June 27th

- 1:00 PM - 4:00 PM REGISTRATION - Room 101
(ALL Convention Participants
—MUST be Registered!)
- 6:00 PM - 9:00 PM ANTIQUE SHOW & SALE
PREVIEW (Main Ballroom)
DISPLAY ROOM OPEN - Room 100
- 9:30 PM - "GET ACQUAINTED" Party
Banquet Room

SATURDAY, June 28th

- 8:00 AM - 10:30 AM REGISTRATION
- 8:30 AM - 10:30 AM CONTINENTAL BREAKFAST
Banquet Room
Speaker - Frank Wollenhaupt
Topic - "Cambridge Figurals"
- 11:00 AM - 6:00 PM ANTIQUE SHOW & SALE
Main Ballroom
DISPLAY ROOM OPEN - Room 100
- 1:00 PM - SLIDE PRESENTATION
- 3:00 PM - SLIDE PRESENTATION
- 7:30 PM - NCC ANNUAL CONVENTION
BANQUET (Banquet Room)
(Buffet)
Speaker - Lynn Welker
Topic - "Cambridge Colors"

SUNDAY, June 29th

- 9:00 AM - BUFFET BREAKFAST
NCC ANNUAL BUSINESS MEETING
Banquet Room
"SHOW & TELL" (after meeting)
- 12 Noon - 6:00 PM ANTIQUE SHOW & SALE
Main Ballroom
- 12 Noon - 4:00 PM DISPLAY ROOM OPEN - Room 100
- 4:00 PM - 6:00 PM DISPLAY ROOM WILL BE CLOSED
(Please pick up Display Glass)



The Cambridge Glass Company



Punch Sets



- 1800—16 pc. Punch Set
- 1—1800—10 in. Bowl & Cover
(Blown) (9 qts.)
- 12—1800—5 oz.
Punch Cup (Blown)
- 1—1800—Ladle
- 1—1800—17 in. Plate

JANUARY 1, 1940

(1402/140)

- 1402 Tally-Ho—15 pc.
Tom & Jerry or Punch Set
- 1—No. 1402/77—13 in. Bowl (6 qts.)
- 12—No. 1402/78—6 oz. Cup - or
No. 1402/140—5 oz. Cup
- 1—No. 1402/111—Ladle
- 1—No. 1402/29—17½ in. Plate



- 1402 Tally-Ho—15 pc. Punch Set
- 1—No. 1402/64—10½ in. Bowl
(4 qts.)
- 12—No. 1402/10—3 oz. Cocktail
- 1—No. 485—Ladle
- 1—No. 1402/29—17½ in. Plate

Cambridge, Ohio - - - U. S. A.

CAMBRIDGE CORDIALS

by Doris Isaacs

Where have all the Cordials gone? They are getting harder and harder to find. Do hope you will enjoy our sharing these with you.

Photo #1 shows a #3795 stemmed Cordial with Paisley etching. This pretty etching was produced late by the Cambridge Glass Company. Check your 1956-58 Catalog Reprint for this stem and etching. Not much of this etching has turned up, but hopefully more will surface now that it can be identified.

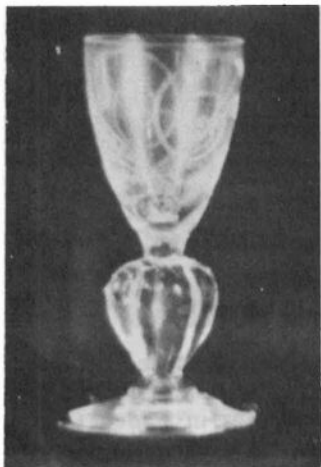


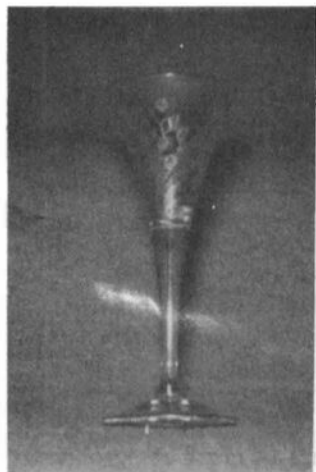
PHOTO #1



PHOTO #2

In photo #2 the Tally-Ho #1402/100 Cordial has gold encrusted Elaine etching. It is just Beautiful! Saw a goblet like this recently at a Show, but the price was out of reach!

The #7966 Cordial shown in photo #3 has the "Lily of the Valley" silk screen decoration (D1064). My husband Roy was outbid at an Auction on this one, but "friends are great", and he ended up with it anyway. It is lovely!



PHOTO#3



PHOTO #4

Another nice Cordial is this #7966 stem (photo #4) with the Rose decoration. Story has it that this pattern was made up to go with a set of Universal Pottery tableware. Some how it didn't go into production and only *ONE* set was made.

Photo #5 shows a tiny dark green Tally-Ho Cordial #1402/13. Precious!



PHOTO #5

Our last photo #6 shows Rock Crystal engravings on stem #3139 Cordial (left) and Wine (right). Although the cutting on the Wine is similar to King Edward, we are unable to identify either of the cuttings. Since these pictures were taken we have purchased a goblet with the same cutting as the Wine.



PHOTO #6

We have also purchased a Wine with an etching I don't recognize. It looks like a ribbon tied in a bow, with leaves and flowers hanging from the bow. The quality of these is so exceptional that an honest, knowledgeable dealer sold a set of these cut wines as Waterford. It took Charles Upton, Cambridge, OH (years later) to correctly identify them. Now, doesn't that make your last goof seem smaller?

Looking forward to seeing many of you at the Convention!

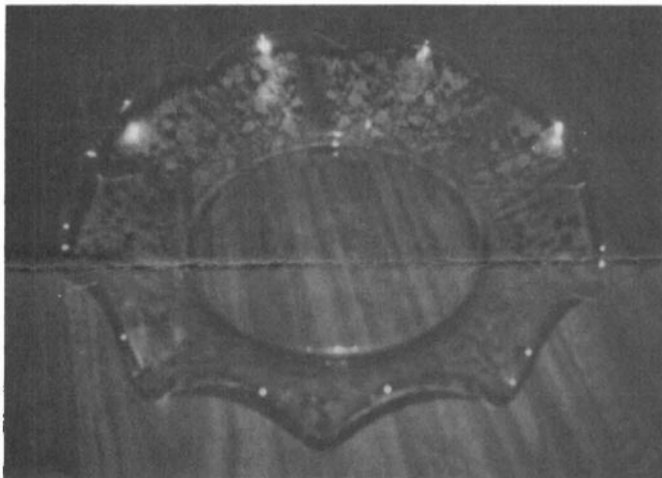
WE GET LETTERS!

"Dear Phyllis, For sometime we have intended to write to see if you and others in the Club could provide us with any information about a rosepoint "bowl" which we purchased several months ago. We are enclosing a picture which is not too definitive. Also, we suspect it would reproduce better if it were a black and white photo rather than color. The previous owner stated that she purchased the piece in Ohio.

We are not familiar with the piece or the shape although we have a fairly extensive collection of Rosepoint. If you and the other Club members have seen other Rosepoint pieces like this and can give us other information in identifying it, we would most certainly appreciate it. Since the NCC Convention is to be a week later this year we can coincide the Show & Sale with our vacation, so we are most certainly looking forward to that time."

Ken and Joan Wilson, OK

It is always a pleasure to be able to give a positive answer



to a question such as yours. Your bowl is a #138 Pristine line, 17" Crimped Pan Bowl. We have a xerox copy of a catalog page showing your bowl, dated August 1, 1942 that was a supplement to the 1940 Catalog. We are sorry it can not be reproduced here, but our copy is just too poor. However, since you will be at the Convention this page will be available for viewing in our Research Room.

"Dear Phyllis, I'm hoping you can help us out. John says he saw a Samovar in your Display Room at the NCC Convention last year. I did not see it. He has collected these for a couple of years, but information on them seems spotty. He has about three with Cambridge etchings. Could you tell us if they were made by Cambridge or just etched? Or is your opinion that they were made by Paden City? Sure would appreciate your thoughts on this."

Evelyn Knowles, FL

A lot of discussion has taken place over the years concerning these Samovar's, Urn's or whatever they are called. Since you asked for my opinion, I will give it! I feel that the ones found in known Cambridge colors, with known Cambridge



etchings on them, were most definitely produced by the Cambridge Glass Company. The same holds true for those found with known Paden City etchings in Paden City colors - they were produced at Paden City. The people who seem to want to argue about these tend to disregard the fact that they were not a regular production item, but were "special order" for the company that produced the metal frame in which they rest. This would be similar to making a statement to the effect that all the glass found in Farber holders is Cambridge Glass. This just isn't true. The makers of the metal holders ordered from several of the glass companies in business at that time and about the only way the glass can be identified as having been made by the Cambridge Glass Company is to go by the color, the shape, and the etching, etc. It would be interesting to hear the opinion of some of our other members on this subject.

MOTEL & CAMPGROUND INFORMATION

Late word indicates that the rooms at the Shenandoah Inn are filling fast! If you have not as yet made your reservation, we suggest that you do so immediately. Write to: Shenandoah Inn, P.O. Box 147, Old Washington, Ohio 43768 or phone: (614) 489-5511.

These rooms are being provided at the "special" rate of \$12.95 for a room with one double bed (1 or 2 persons), and \$20.00 for a room with two double beds (1 or 4 persons). These are nice, clean rooms! Please specify your NCC affiliation when making your reservation.

For those interested in camping, there is a nice Campground located just about a mile from the Inn on old Route 40. Please see their advertisement on page 13 of this issue, for complete information.

CONVENTIONITIS

By Willard P. Kolb

The countdown for another gala, fun-loving, and educational Convention has started. Those of you who haven't sent in your registration forms, need to do so very soon. This should be a "bigger and better" Convention - as it is every year! Those of you who have never attended, don't know what you're missing. Few people, once they attend the three day affair, fail to make plans to attend the following year. When people from the far west coast, the deep south, the northeast, and most points in between travel to Cambridge to attend the Convention each year there has to be some reason for it.

Don't worry about coming and feeling out of place because you don't know anyone, or you don't know anything about Cambridge Glass. I didn't know one single person when I attended my first Convention except the person who had signed me up as a member, but when I left I felt I'd known everyone there all my life. They are a friendly and fun-loving bunch of people. As for my knowledge of Cambridge Glass at that first Convention, the only thing I knew was that it was marked with an H in a diamond! Boy, it didn't take them long to start teaching me, and I've been learning ever since! Seriously, you'll be surprised at the amount of information you will pick up just by talking to the members. You see, all Cambridge Members have two things in common, they are "glassoholics" and they like to talk about Cambridge Glass.

The Antique Show, as always, will be one of the high points of the Convention. Here you'll probably be able to pick up that piece of Cambridge that has been eluding you for so long.

Friday evening there will be the "Get-Acquainted Party" where you can meet people you've never met, tell tall tales, do your bragging or whatever you like. Also, in conjunction with the party this year we're having a "Mini-Auction" with a special surprise. Don't miss it.

There will also be: the All-Blue "Display Room" where you'll be able to see the differences in the blues; Slide Shows to help you with your learning; a "Research Room" where you'll be able to dig up information; and a "WANT" board where you can list pieces you're looking for (no "for sale" lists, PLEASE! "Will trade for", yes). Also don't forget the Banquet and the educational speech by Lynn Welker on Saturday night or the Annual Club Meeting Sunday morning where you can express your ideas, and bring your items for "Show and Tell".

Those of you who can spend an extra day or want to get away for a while at the Convention will find other points of interest in the area such as the Bennett and Degenhart Museums and the Mosser, Boyd and Guernsey glass factories.

The committee and everyone connected with planning the Convention and Antique Show are putting the final

touches on their respective assignments. I won't even try to tell you the amount of time and hard work that goes into making this a successful endeavor. The only "thanks" that these hard working people want is to see every possible member attend and enjoy themselves.

Don't fail to come because you can't attend all the functions, at least come and look sometime during the three days and I know you'll like what you see.

LET'S ALL GET CONVENTIONITIS AND TRY TO ATTEND.

Plate Etched 746 "Gloria"



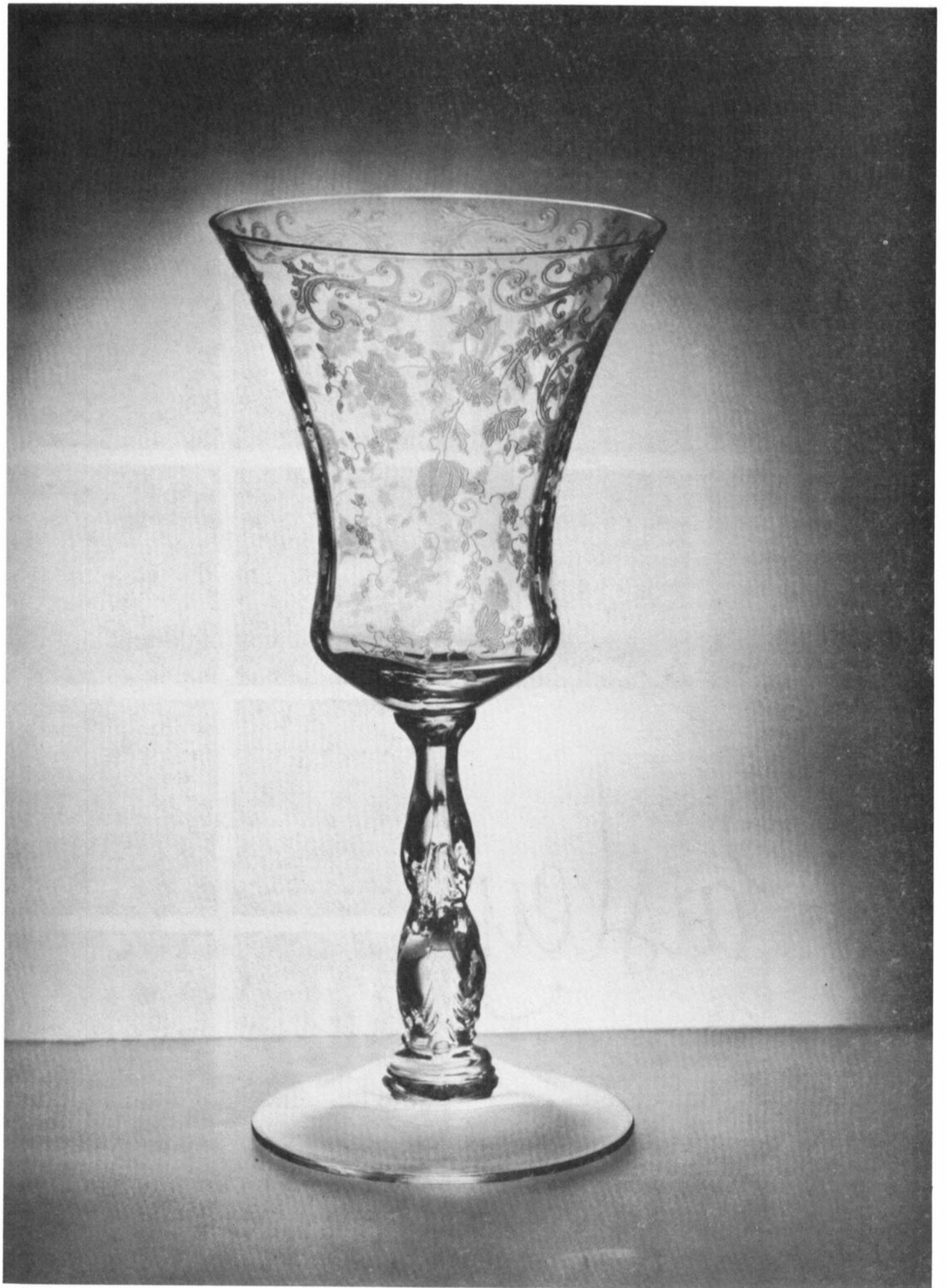
3400/78 Cocktail Shaker
Ground in Stopper with
Opening for Pouring.

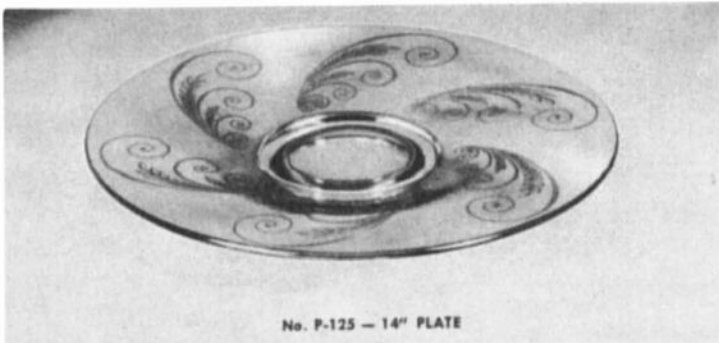
NEED A RIDE TO THE CONVENTION?

Have car, could take up to four, will be traveling to the NCC Convention.

We had a note from Donna W. Lick, Mt. Pleasant, MI, and she has offered to pick up any member living along the route from Mt. Pleasant to Cambridge, Ohio. She plans to arrive in Cambridge during the evening of June 26th and will be returning to Michigan on June 29th.

If you are interested in "hitching" a ride with her, please write to: Donna W. Lick, c/o National Cambridge Collectors, Inc., P.O. Box 416, Cambridge, Ohio 43725. Please do so as soon as possible as your letter will have to be forwarded to her and then she will contact you.





No. P-125 — 14" PLATE



No. 3795
5 OZ. FOOTED TUMBLER



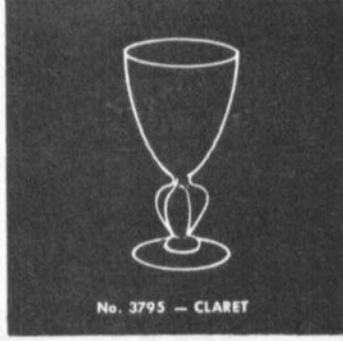
No. 3795 — ÇORDIAL



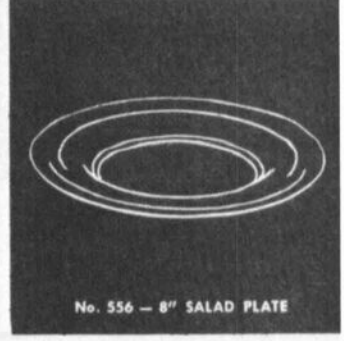
No. 3795 — SHERBET



No. 3795
12 OZ. FOOTED TUMBLER



No. 3795 — CLARET



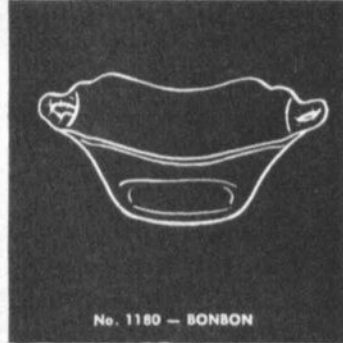
No. 556 — 8" SALAD PLATE



No. 3795 — WINE



No. 3795 — COCKTAIL



No. 1180 — BONBON



No. 3795 — GOBLET

Paisley



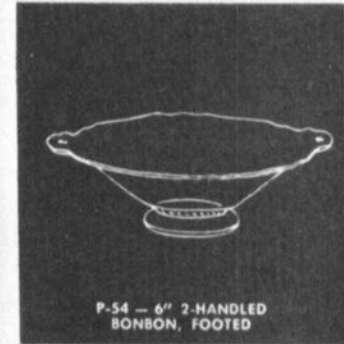
No. 1532
3-PIECE MAYONNAISE SET



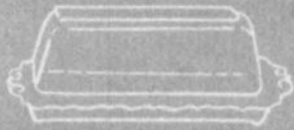
No. 499
CALLA LILY CANDLESTICK



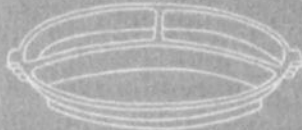
No. 3795 — GOBLET



P-54 — 6" 2-HANDLED
BONBON, FOOTED



No. 3900/52 - BUTTER DISH



No. P-207
8" 3-PART CELERY AND RELISH



No. P-290 - 6 OZ. OIL



No. 1498 - 8" 3-PART RELISH



No. P-347 - 11" CELERY



No. P-101 - COCKTAIL SHAKER



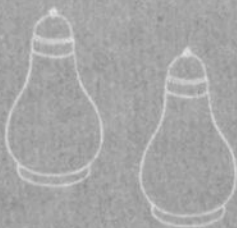
No. 477 - 9 1/2" PICKLE



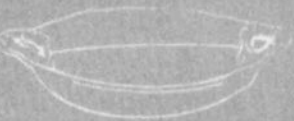
No. P-306
CANDY BOX AND COVER



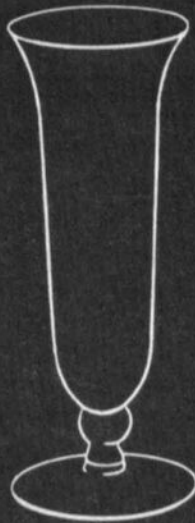
No. P-254 - SUGAR & CREAM



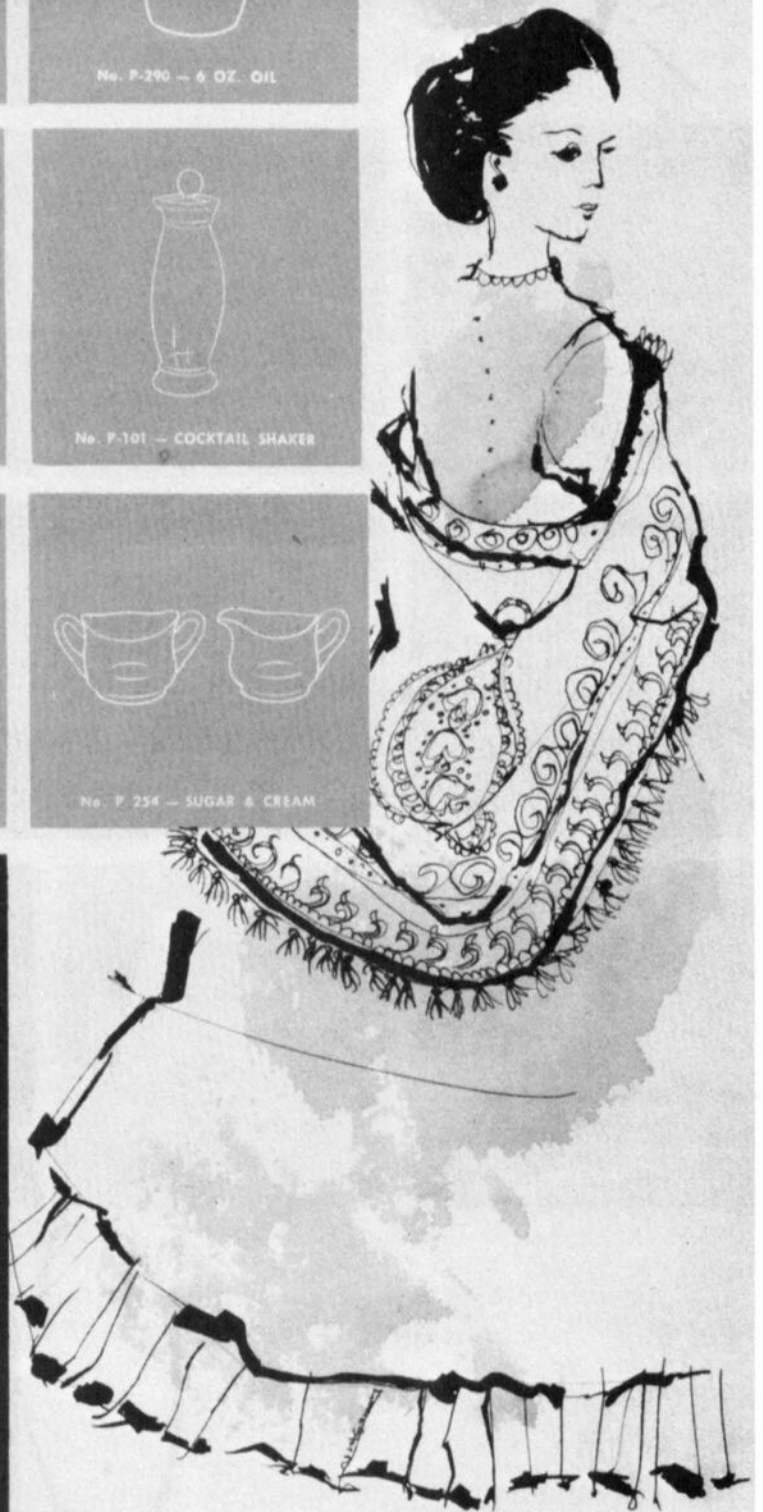
No. 1956/105
SALT AND PEPPER



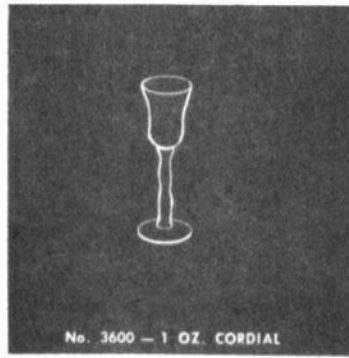
No. 3400/90 - 6" HANDLED
2-PART RELISH



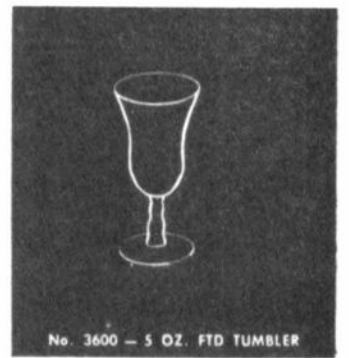
No. 6004 - 8" VASE



THE CAMBRIDGE GLASS COMPANY, CAMBRIDGE, OHIO, U. S. A.



No. 3600 - 1 OZ. CORDIAL



No. 3600 - 5 OZ. FTD TUMBLER



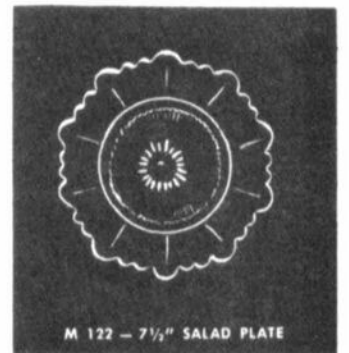
No. 3600 - 2 1/2 OZ. COCKTAIL



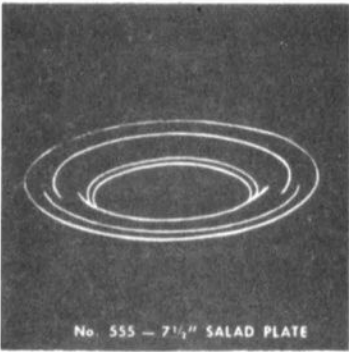
No. 3600 - 4 1/2 OZ. CLARET



No. 3600 - 10 OZ. GOBLET



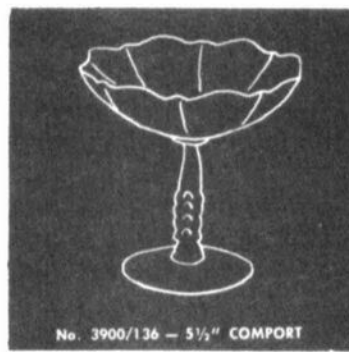
M 122 - 7 1/2" SALAD PLATE



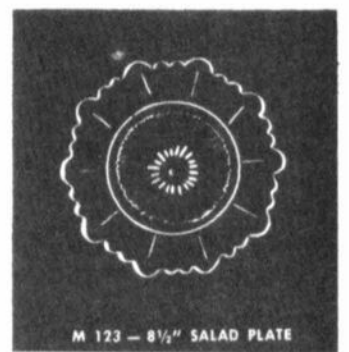
No. 555 - 7 1/4" SALAD PLATE



No. 3600 - 2 1/2 OZ. WINE



No. 3900/136 - 5 1/2" COMFORT



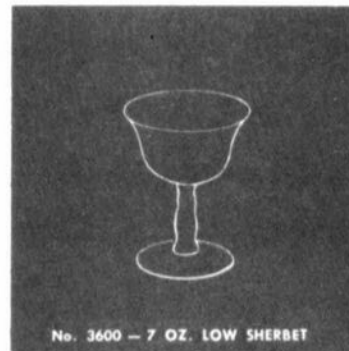
M 123 - 8 1/2" SALAD PLATE



No. 3600
4 1/2 OZ. OYSTER COCKTAIL



No. 3600 - 7 OZ. TALL SHERBET



No. 3600 - 7 OZ. LOW SHERBET



No. 3600 - FTD 12 OZ. ICE TEA

Chantilly



THE CAMBRIDGE GLASS COMPANY, CAMBRIDGE, OHIO, U. S. A.

THE NATIONAL DUNCAN GLASS SOCIETY

Presents its

FIFTH ANNUAL ALL-DUNCAN GLASS SHOW & SALE

JULY 19, 12 NOON to 9:30 P.M. — JULY 20, 12 NOON to 6 P.M.

HOLIDAY INN

WASHINGTON, PENNSYLVANIA

At intersection of I-70 and U.S. 40

ADMISSION: \$2.00

GLASS MENAGERIE ANTIQUES

Route #2, New Concord, Ohio 43762

Phone (614) 826-7140

FOR SALE

Ball Jug, Rosepoint etch	\$150
Doulton Pitcher, Rosepoint etch	175
Ring Stem Vase, 12", Rosepoint etch	60
Plate, 9" w/sterling, rose embossed rim, Rosepoint etch	150
Water Goblets, #3500, Rosepoint etch (ea.)	22
Cordials, #3121, Rosepoint etch (ea.)	53
Caprice triangle Cigarette Holder, moonlight blue ..	25
Caprice Console Set w/low candles, moonlight blue	48
Caprice, large Cigarette Box, moonlight blue	45
Alpine Candy Dish w/lid	60
Chantilly V/O w/sterling ft. & covered stopper	75
Chantilly Cordial, #3121	35
Large Cornucopia w/sterling ft., King Edward cutting	75
Large Pillow Vase, crown tuscan w/gold enc. Chintz pattern, fully acid signed	175
Small Swan w/silver overlay	80
Basket, ebony (blk. amethyst)	65
Caprice 13" ruffled bowl, deep green	65
Scotty Bookends (pr.)	150
Heron	65
Blue Jay	85

Shipping Extra Please!

Approximately 1,000 pieces of Cambridge glass, nice selection of Rosepoint, all colors Boyd Dolls and Logos.

Shop Open Anytime!

(east city limit of New Concord, Ohio on U.S. Rt. 22/40)

ENJOY PLEASANT CAMPING (convenient to NCC Convention)

Buckeye Hills Travel Park

90 SITES

22 water, 36 electric, 8 sewer

Toilets, Showers, Lake w/fishing,
Hiking, Pets on leash.

\$6 Full Hook-Up!

*Located off I-70, exit 186
west 1 mile on old U.S. Route 40*

For Reservations or Additional Information
WRITE OR PHONE

Buckeye Hills Camping

Box 506

R.F.D. 4 - Route 40 E

Cambridge, OH 43725

Phone: 614/439-1858

ROBERT HOLFORD

139 Jackson St., Haskell, NJ 07420

Phone (201) 835-2279

Bon Bon, Rosepoint etch	\$ 15
Vase, keyhole stem, Diane etch	20
Stemware, #3122 - Clarets (10); Low Sherbets (8); 10 oz. Goblets (8) Diane etch (set)	275
Rosepoint etched Dish w/sterling Tray	125
Doric Column Candlesticks w/label, ebony (pr.)	95
Candlesticks, 10", azurite (pr.)	65
Candlesticks, 3-lite, 5", royal blue (pr.)	75
Vase, keyhole stem w/label, royal blue	35
Basket, 6" Gadroon, royal blue	30
Comport, #3011 Nude Stem, flared, royal blue	90
Mt. Vernon, 3-part Relish, carmen	37
Basket, 6" Gadroon, carmen	35
Comport, #3011 Nude Stem, flared, carmen	105
#3400 Nut Set, 6 pcs., forest green	50
Sandwich Tray, hldd., forest green	17
Decagon Ice Bucket, forest green	30
Farberware Decanter & 2 glasses, forest green (set)	40
Sandwich Tray, hldd., lt. emerald green	17
Decagon Ice Tub, pink	14
Decagon Relish dish, pink	17
Decagon Candlesticks, 2-lite, Diane etch, heatherbloom (pr.)	150
Everglades Candlesticks, crystal (pr.)	25
Farberware Ball Decanter w/6 glasses, amethyst (set)	55
Decanter w/5 glasses, amethyst (set)	22
Caprice Candlesticks w/prism, moonlight blue (pr.)	55

POSTAGE AND INSURANCE EXTRA

— Classified —

BUYING DEPRESSION GLASS, Cambridge, Heisey, Fostoria, Akro-Agate, glass figurals and unusual glass "cuties". Nadine Pankow, 207 S. Oakwood, Willow Springs, IL 60480. Phone: 312-839-5231.

WANTED: NEARCUT: 10" lamp shade in Wheat Sheaf pattern. Also base for Daisy punch bowl. Bill & Phyllis Smith, 4003 Old Columbus Rd., Springfield, OH 45502. Phone: 513-323-3888.

Club News - continued from page 2

Lunch was served on the Brown's lovely moonlight blue Caprice with much talk about the upcoming June Convention that most members plan to attend, so see you there!

New members are welcome. Call Clara Brown at 313-742-0974.

Submitted by Betty Dasen, Secretary

DEALERS



DIRECTORY

NOTE: When writing to the Dealers listed here, please enclose a SASE!

<p>EVELYN M. ALLEN 135 Cynthia Street Heath, Ohio 43055 Mail Order & Shows 614-522-1635 SPECIALIZING IN CAMBRIDGE GLASS!</p>	<p>BENICIA ANTIQUE SHOP 305 First Street Benicia, California 94510 OPEN 11 AM - 5 PM Closed Monday Z. E. LOPES 707-745-0978 VISIT HISTORIC BENICIA and its 28 shops Off Interstate #80 North of San Francisco</p>	<p>CHARLES MIKULIK Box 416 Elizabeth, N.J. 07207 — COLLECTOR — Always paying good prices for CAMBRIDGE CAPRICE in all colors 201-372-1101 CARRY MOST TYPES OF ANTIQUES</p>
<p>BLACK ROOSTER ANTIQUES 1018 Clark Street Cambridge, Ohio 43725 614-432-3202 M. Sipe CAMBRIDGE GLASS - GENERAL LINE</p>	<p>COLLECTORS II 414 S. Washington Olympia, WA 98501 Ruby Gilmer & Pauline Christensen 206-754-7808 GLASSWARE — POTTERY — COLLECTIBLES</p>	<p>COYLE & SCHUSTER ANTIQUES Box 982 - Ph. 614-349-7362 Newark, Ohio 43055 Shows & Mail Order BUY & SELL - CAMBRIDGE - HEISEY</p>
<p>BERKELEY ANTIQUES 69 Berkeley St. Boston, MA 02116 George or Frank 617-426-1048 CAMBRIDGE, HEISEY, GENERAL LINE</p>	<p>D'MARIE'S ANTIQUES US Rt. 1 - just South of Rt. 606 Thornburg, Virginia 22565 703-582-6220 Jim Rankin OPEN EVERY DAY 10 AM to 6 PM</p>	<p>FINDER'S KEEPER'S ANTIQUES P.O. Box 303 Dayton, O. 45401 513-254-2937 P.O. Box 16023 Columbus, O. 43216 614-885-2726 SPECIALIZING IN CAMBRIDGE GLASS!</p>
<p>THE GLASS CUPBOARD 39 Shire Oaks Drive Pittsford, New York 14534 Marcia Ellis 716-586-7596 CAMBRIDGE ONLY SASE FOR LIST</p>	<p>GEORGE HOFFMAN ANTIQUES 129 South 4th Street Newark, Ohio 43055 614-345-8021</p>	<p>'OUR GLASS ANTIQUES Box 27, Wills Point, Texas 75169 20th CENTURY COLLECTIBLES featuring CAMBRIDGE GLASS! Shows - No Lists - SASE Please PAUL & GINNY HENDERSON 214-563-6971</p>
<p>LASHER ASSOCIATES 119 Water St. Gaithersburg, Md. 20760 Faith Lasher 301-977-8296 SPECIALIZING IN GLASSWARE</p>	<p><i>YOU CAN ADVERTISE YOUR ANTIQUE SHOP HERE!</i> 1 inch - \$6 for six months</p>	<p>1886 HOUSE East Schodack, N.Y. 12063 MAIL and SHOWS Laurie Cruise 518-477-5895 CAMBRIDGE - NORITAKE - AZALEA - D.G.</p>
<p><i>YOU CAN ADVERTISE YOUR ANTIQUE SHOP HERE!</i> 1 inch - \$6 for six months</p>	<p>ROLLING ACRES ANTIQUES 66484 N. 8th Street Road Cambridge, Ohio 43725 Sandy Jenkins & Anne Ingram 614-432-2570 CAMBRIDGE & GENERAL LINE ANTIQUES</p>	<p>BILL & SHARON PHILLIPS 21730 Friday Euclid, Ohio 44123 Ph. 216-261-4665 Shows Only BUYING GLASS, ANTIQUES, ETC.</p>
<p>CHARLES A. SHAW Glenwood Gardens - R.V.W.1B Yonkers, NY 10701 AMERICAN GLASS — 914-476-5175 SHOWS & MAIL ORDER!</p>	<p>AL STEELE Westerville, Ohio 614-882-6483 or 614-882-7124 Mail Orders and Shows Only HEISEY — CAMBRIDGE — PATTERN GLASS</p>	<p>SWISS HILLS COLLECTIBLES Mary & Wilbur Henderson 303 Guilford Avenue Woodsfield, Ohio 43793 Mail & Shows 614-472-1133 SPECIALIZING IN CAMBRIDGE GLASS!</p>
<p>THREE FRIENDS ANTIQUES CO. 3930 Broadview Rd. Richfield, OH 44286 Hours: Tues.-Sat. 10-4, Sun. 12-5 Phone 216-659-3930 WE BUY & SELL CAMBRIDGE!</p>	<p><i>YOU CAN ADVERTISE YOUR ANTIQUE SHOP HERE!</i> 1 inch - \$6 for six months</p>	<p>WICKFORD ANTIQUE ARCADE 650 Ten Rod Road North Kingstown, RI 02852 The Clausons 401-295-7520 SPECIALIZING IN GLASSWARE</p>



ANTIQUÉ SHOW & SALE

(& 7th Annual Convention)

SHENANDOAH INN

INTERSTATE 70 .. EXIT 185 .. 1/2 MILES EAST OF
CAMBRIDGE, OHIO

JUNE 27, 28, 29, 1980

FRIDAY, JUNE 27th	6:00 - 9:00
(PREVIEW ADMISSION \$3.50)		
SATURDAY, JUNE 28th	11:00 - 6:00
SUNDAY, JUNE 29th	12:00 - 6:00
(ADMISSION \$1.75)		

FOOD
OFFERING CAMBRIDGE AND OTHER FINE GLASSWARE
ALONG WITH A GENERAL LINE OF ANTIQUES
DOOR PRIZES
PARKING

REMINDER

If you are planning to attend this year's Convention, it is very important that you return your Advance Registration Form (attached to your May CRYSTAL BALL) no later than June 16th.

Everyone is working hard to complete plans for the Convention and Antique Show & Sale. It is necessary to know how many of you plan to attend.

Also, please express your willingness to help with various committee activities, such as Registration, Banquet Tables, Display Room, Book Sales Table, Show Ticket Sales, etc.

Don't forget to bring your "donation" Cambridge glass to be auctioned in our Mini-Auction to be held Friday evening at the Get-Acquainted Party!

1980 CONVENTION

JUNE 27, 28, 29, 1980

ANTIQUÉ SHOW & SALE

National Cambridge Collectors, Inc.
P.O. Box #416
Cambridge, Ohio 43725

FIRST-CLASS MAIL
U.S. POSTAGE
PAID
So. Vienna, Ohio
45389
Permit No. 15

FIRST CLASS MAIL