

Cambridge



Crystal Ball

ISSUE NO. 85

MAY 1980

Published monthly by the NATIONAL CAMBRIDGE COLLECTORS, Inc.
To encourage and to report the discovery of the elegant and boundless product
of the Cambridge Glass Company, Cambridge, Ohio



Photo circa 1924

The Cambridge Glass Co., Cambridge, Ohio

A Look-in at the Chicago Display Room
Room 311, Shops Bldg., 17 North Wabash Ave.
Buyers visiting Chicago should see this most complete display.

MEMBERSHIP RENEWAL NOTICE

If the date on your
address label is - -

5 - 80

This is your **LAST ISSUE** of the
CRYSTAL BALL. Please renew **NOW!**

Pictured above is the last of 24 photos contained in a booklet entitled "A Souvenir" and distributed by the Cambridge Glass Company during their 22nd year in business. All 24 photos have now been printed in the CRYSTAL BALL at various times beginning with Issue #1. We extend sincere "Thanks" to William C. Orme, grandson of Arthur J. Bennett, for loaning us the booklet.

CAMBRIDGE CRYSTAL BALL

Official publication of National Cambridge Collectors, Inc., a non-profit corporation with tax exempt status. Published once a month for the benefit of its members. Back issues of the CRYSTAL BALL are available to members only, at a cost of 60¢ each or 12 issues for \$7.

Membership is available for individual members at \$10 per year and additional members (12 years of age and residing in the same household) at \$3 ea. All members have voting rights, but only one CRYSTAL BALL will be mailed per household.

1979-80 OFFICERS & COMMITTEE CHAIRPERSONS

PRESIDENT William C. Smith
 VICE-PRESIDENT Lynn Welker
 SECRETARY Janice Y. Hughes
 TREASURER Ruby Landman
 SERGEANT-AT-ARMS George W. Hoffman
 BUDGET & FINANCE William C. Smith
 BY-LAWS David B. Rankin
 CONVENTION Lynn Welker
 MEMBERSHIP Josephine A. Barstow
 MUSEUM Arnold Lynd
 PROGRAM & ENTERTAINMENT Frank Wollenhaupt
 PROJECT Willard Kolb
 PUBLICITY Don E. Armbrrecht
 STUDY GROUP ADVISORY John F. Rettig

1980 ALL-CAMBRIDGE AUCTION Lynn Welker
 1980 ANTIQUE SHOW William C. Smith

CRYSTAL BALL EDITOR Phyllis D. Smith

CLASSIFIED ADVERTISING RATES

5¢ per word \$1.00 minimum

We cannot mix type size in classified advertisements. Abbreviations and initials will count as words. Payment in full MUST accompany all ads.

DISPLAY ADVERTISING RATES

	Members	Non-Members
1/8 page	\$ 4.00	\$ 6.00
1/4 page	7.00	10.00
1/2 page	12.00	18.00
3/4 page	17.00	25.00
Full page	22.00	33.00

DEALERS DIRECTORY

1" ad \$6.00 for 6 months

Cambridge CRYSTAL BALL assumes no responsibility for items advertised and will not be responsible for error in price, description or other information.

Advertising copy must be in our hands by the 15th of each month to assure publication in our next issue. Advertisements containing reproductions will not knowingly be accepted unless clearly stated.

PLEASE ADDRESS ALL CORRESPONDENCE TO

CAMBRIDGE CRYSTAL BALL
 National Cambridge Collectors, Inc.
 P.O. Box #416
 Cambridge, Ohio 43725

PLEASE NOTIFY US IMMEDIATELY OF ANY CHANGE IN YOUR ADDRESS!

Please enclose a self-addressed, stamped envelope when requesting information!!

STUDY Club News

STUDY GROUP #5 - SOUTHERN CALIFORNIA "CALIFORNIA CAMBRIDGE COLLECTORS"

The California Cambridge Collectors met at 7:30, March 21st in the home of Ruth and Fred Eilenfield.

The program was "Cambridge Opaque Colors" and was presented by Ruth Eilenfield. A table was set with all of Cambridge's opaque colors, a very beautiful sight. Thank you Ruth.

Our monthly raffle was won by Yolanda Jennings. A lovely pair of Moonlight Blue 3½" Star Candleholders.

"Show and Tell" that evening saw: a Fleur-de-Lis butter mold; a cupped, forest green, Nude Stem compote; six Rosepoint cups and saucers in Gadroon pattern; 4½" and 6½" crystal Swans, marked; eight Rubina optic tumblers; a triangular crystal Caprice cigarette holder; a #1455 cigarette holder in crystal; a crown Tuscan 10" footed vase; a Farber Bros. tray with salt, pepper, and two oils in mixed colors; a 6½" crystal Swan with Moonstone interior; a moonlight blue 13" Figure Flower Holder; a 10" mocha Swan; two amethyst colognes and powder box; an 11" oval bowl and pair of 7" candleholders with prisms in moonlight blue Alpine Caprice; moonlight blue Alpine Caprice wines and champagnes; a royal blue Decagon luncheon plate and cup and saucer; a carmen #3400 2 oz. oil with keyhole stopper; an amber #3400 Bitters bottle, and a moonlight blue Two-Kid Flower Holder.

We then adjourned for refreshments. Next month's program will be Cambridge Smokers Items.

Submitted by Paula Ashby
Corresponding Secretary

STUDY GROUP #7 - EASTERN OHIO "THE CAMBRIDGE BUFFS"

The Cambridge Buffs Study Group met April 9th in the home of Peg and Dale Gotschall. There were twelve members present.

NCC slides of Cambridge Candlesticks were shown and several candlesticks were on display to compare and discuss. Slides on Cambridge Stems were also shown, but were not discussed at great length.

It was decided that the Cambridge Buffs would be buying Near Cut pieces for the Cambridge Museum. The first piece was donated by Peg and Dale Gotschall.

Time and place for next meeting will be announced later!

Submitted by Karen Jones

THE TALL AND THE SHORT!

by Doris Isaacs

The three little items we are sharing with you this month were purchased during the past three or four years. We found them at a garage sale (one of the Nudes), an antique shop, and in the home of friends.

The Nude on your left in photo #1 (with the satin finish stem) is the #3011/13 1 oz. Brandy, and the one on the right is the #3011/14 1 oz. Cordial. Both have amethyst tops.



PHOTO #1

In photo #2 is the #3106 Cordial which measures just over 5½" in height. The Cordial on the Stradivari stem measures this same height also. In Roy's collection of Cordials, only the Nude Stem is taller. Please note that both the bowl and stem of this Cordial are cut!



PHOTO #2



PHOTO #3

Photo #3 shows the Tuxedo 1 oz. Cordial. Reference for this can be found in the NCC 1949-53 Catalog Reprint on page 157. This one has a crystal bowl and a carmen foot.

We paid in a price range of \$4 to \$65 for these items -- and "No" the garage sale Nude wasn't the cheapest piece either!

SEVENTH ANNUAL CONVENTION

National Cambridge Collectors, Inc.

June 27, 28, 29, 1980

ALL CONVENTION ACTIVITIES
will be held in the

SHENANDOAH INN
P.O. Box 147, Old Washington, Ohio 43768

(Interstate 70 - Exit 186 - 7 Miles East of Cambridge, Ohio)

Phone - 614/489-5511

SCHEDULE OF EVENTS

FRIDAY, June 27th

- 1:00 PM - 4:00 PM REGISTRATION - Room 101
(ALL Convention Participants
---MUST be Registered!)
- 6:00 PM - 9:00 PM ANTIQUE SHOW & SALE---
PREVIEW (Main Ballroom)
DISPLAY ROOM OPEN - Room 100
- 9:30 PM - "GET ACQUAINTED" Party
Banquet Room (Pay Bar)

SATURDAY, June 28th

- 8:00 AM - 10:30 AM REGISTRATION
- 8:30 AM - 10:30 AM CONTINENTAL BREAKFAST
Banquet Room
Speaker - Frank Wollenhaupt
Topic - "Cambridge Figurals"
- 11:00 AM - 6:00 PM ANTIQUE SHOW & SALE
Main Ballroom
DISPLAY ROOM OPEN - Room 100
- 1:00 PM - SLIDE PRESENTATION
- 3:00 PM - SLIDE PRESENTATION
- 6:30 PM - 7:30 PM COCKTAIL HOUR (Pay Bar)
- 7:30 PM - NCC ANNUAL CONVENTION
BANQUET (Banquet Room)
(Buffet)
Speaker - Lynn Welker
Topic - "Cambridge Colors"

SUNDAY, June 29th

- 9:00 AM - BUFFET BREAKFAST
NCC ANNUAL BUSINESS MEETING
Banquet Room
"SHOW & TELL" (after meeting)
- 12 Noon - 6:00 PM ANTIQUE SHOW & SALE
Main Ballroom
- 12 Noon - 4:00 PM DISPLAY ROOM OPEN - Room 100
- 4:00 PM - 6:00 PM DISPLAY ROOM WILL BE CLOSED
(Please pick up Display Glass)

NOMINEES FOR BOARD

Your 1980 Nominating Committee presents for your consideration, the following resume for each Nominee seeking to be elected to your Board of Directors. The three elected will serve on this Board for the next four years, until 1984. They are listed here alphabetically. Please follow the instructions on the Ballot(s) enclosed with this (May 1980) issue of the Cambridge CRYSTAL BALL, in casting your vote.



JOSEPH ANDREJCAK: Joe joined NCC in May, 1973 and holds card #28. He is a founder of Study Group #4 "The Cambridge Arms". He was also responsible for several displays of Cambridge Glass in the Cleveland Area helping to encourage interest in Cambridge glass and membership in NCC.

Joe was born in 1938 in Cleveland, Ohio and graduated from Ohio State University. He and his wife Karen are the parents of 5 children, 4 boys and 1 girl. Joe lives in Lakewood, Ohio and works as district sales manager for International Mineral and Chemical Co.

He has served as President of the Back Court Club of St. Edward's High School and is a member of the Western Reserve Depression Glass Club, Study Group #4 "The Cambridge Arms", and the American Foundry Society.



DON E. ARMBRECHT: Don joined NCC in May, 1973, and holds card #154. He regularly attended all functions of the club and was appointed to the Board of Directors in November, 1978. He has served as Publicity chairman since that time.

Don was born in 1914 in Findlay, Ohio and is a graduate of Findlay College. He and his wife Odulla are the parents of 3 sons and have 10 grandchildren. Don currently lives in Avon Lake, Ohio and works as Product and Process Development Scientist for Union Carbide Corporation. Thirty of a total 41 years of service were in product quality control.

Don has served for 24 years on his local School Board serving as President 2 years and Vice-President 3 years. For this service he recently received recognition by presentation of the first "Key to the City" by the mayor of Avon Lake. He is an 18 year member of Kiwanis serving as President 1 year, Vice-President 3 years, and Director 4 years; and is Secretary of "Greate Years Corp.", a non-profit organization involved with building and operating a Senior Citizens Retirement Center. He is also an active member of the United Church of Christ and has served in many ways over the years.



GEORGE W. HOFFMAN: George joined NCC in May, 1974 and holds card #317. He served on the "Show and Tell" panel for the 1976 Convention, was appointed to the Board of Directors in March, 1977, served as assistant Show manager in 1977, Vice-President and Convention chairman in 1978-1979, chairman of By-Laws committee 1978-1979 and Sergeant at Arms since 1978, a position he still holds. He has also served on various other committees and has been a worker.

George was born in 1932 in Harrisburg, New York. After high school he joined the Marines and served for 8 years retiring with the rank of Master Sergeant.

For the past 18 years, George has been an antique dealer and show promoter in Newark, Ohio. He is a member of United Commercial Travelers, Heisey Collectors of America, Fenton Art Glass Collectors, American Carnival Glass Association as well as St. Francis Church in Newark.



WILLIAM J. TURNER: Bill joined NCC in March, 1975 and holds card #398. He has been a hard worker for the organization each year at convention time when he has worked on display rooms and the registration desk as well as anything else which needed doing.

Bill was born in 1933 in Bellefontaine, Ohio and attended both Ohio University and Ohio Northern University. He and his wife Meg are the parents of 3 children, 2 girls and 1 boy. Bill recently moved to Zanesville, Ohio from Stone Mountain, Georgia and now works as manager of Lee Jewelers. While in Georgia he worked in technical sales for the Union Chemical Division of Union Oil Company of California.

He is a member of the Elk's Club in Zanesville and was active as a lay leader, member of the Board of Deacons, and member of various other Boards of the Mountain Chapel Methodist Church in Stone Mountain, Georgia and now attends First Baptist Church, Cambridge, Ohio.

N.C.C. WELL REPRESENTED!

by Phyllis Smith

National Cambridge Collectors, Inc., was well represented the weekend of April 12 and 13, during the "Glass Bash" held at historic Wheaton Village, Millville, N.J.



WHEATON VILLAGE, MILLVILLE, N.J. -- "Glass Review" managing editor Barbara Shaeffer and feature editor Gwen Shumpert discuss a piece of "collectible" glass with NCC President Bill Smith.

NCC President Bill Smith was one of the guest speakers for this event and his topic was "Cambridge Glass - The Company and the Product: 1902-1960". There was a table provided during the Show for the sale of books on Cambridge Glass and NCC memberships.

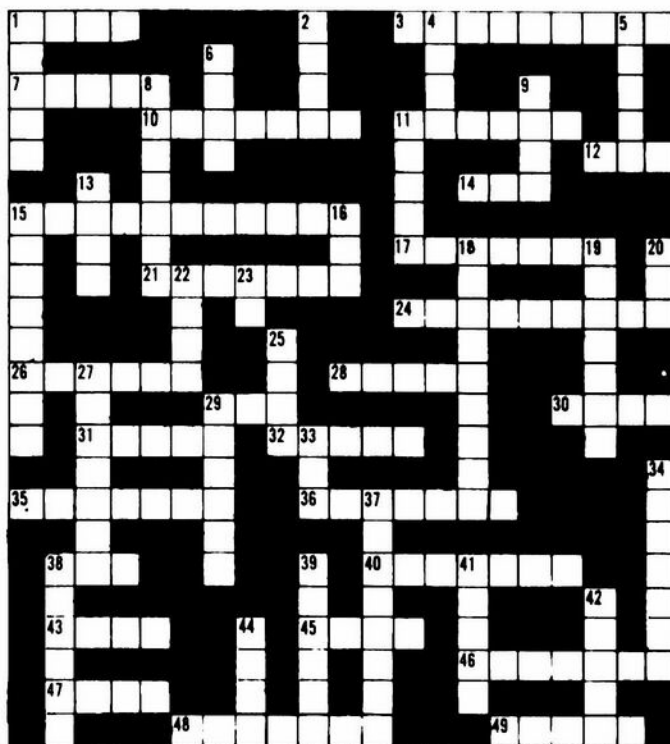
This outstanding glass show was sponsored by "Glass Review" editor Barbara Shaeffer of Costa Mesa, CA. Many of her feature writers for this monthly publication are also NCC members. Those present during the weekend included: Gail Krause, PA; Gwen Shumpert, MS; Roserita Ziegler, CT; and Phyllis Smith, OH. Gwen and Roserita were also featured speakers during the weekend.

(Editor's Note: Information concerning the "Glass Review" may be obtained by writing to: Glass Review, P.O. Box 2315, Costa Mesa, CA 92626.)

DISPLAY ROOM

Don't forget to return the form enclosed with your April CRYSTAL BALL concerning the Display Room. Chairman Willard Kolb and his committee need this information as soon as possible so they will have plenty of time to arrange for this display!

Complements of the
Cambridge Squares Study Group



ACROSS

- 1 Graceful Bird
- 3 Swamp
- 7 Purple Fruit
- 10 Beer Type
- 11 Breakfast
- 12 Extremity
- 14 Crazy, Slang
- 15 Card Beagle
- 17 Many Sided
- 21 Used Acid
- 24 Discreet Lady
- 26 Snifter
- 28 Spring Bloom
- 29 Tonic Mixer
- 30 Burlesque
- 31 Lavender Opaque
- 32 Big Bird
- 35 Polite
- 36 Crusher
- 38 Cereal Grain
- 40 Amusement Ride
- 43 Tat
- 45 Musical Group
- 46 Girl's Best Friend
- 47 Long _____ Rose
- 48 Barnyard Denison
- 49 Dark

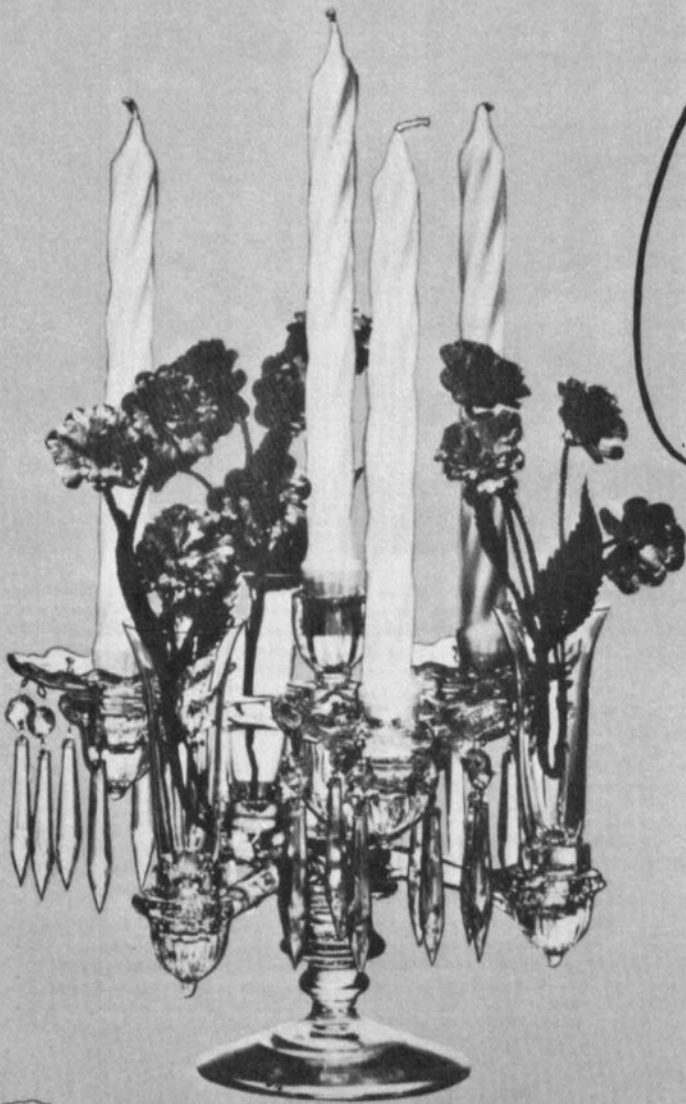
DOWN

- 1 Coffee Sweetner
- 2 Urn
- 4 Creeps
- 5 Name
- 6 Sport
- 8 Center Piece
- 9 Seasoning
- 11 Overcast
- 13 Putting on the _____
- 15 Easter Gift
- 16 Lassie
- 18 Bubbly
- 19 Pressed Mark
- 20 Vine
- 22 Server
- 23 Tally _____
- 25 Martini and Rossi
- 27 Cigarette Receptacle
- 29 Glass
- 33 Cambridge _____
- 34 Condiment
- 37 Whiskey Bottle
- 38 Celery, etc.
- 39 Best Blue
- 41 Dig
- 42 Regal Head Piece
- 44 Bassett Hound

Answers on page 14.

"We should be as careful of our words as of our actions."
CICERO

Cambridge handmade crystal has long been the final touch of elegance to the loveliest table settings. Its gracious beauty, born of the finest materials, skillfully transformed by proud craftsmen, places Cambridge crystal among the home's most honored possessions. Highly prized among Cambridge coveted crystal creations are the distinctive "Cambridge" decorative table accessories. These graceful crystal-clear units perform sheer magic in beautifying the table because they are so adaptable to unique and clever arrangements. The "Cambridge Arm" can be used as an effective four-candle holder, or it can be a part of a striking ensemble created with other accessory pieces. With this unusual grouping of glassware, you can fulfill your every wish — from a simple, beautiful centerpiece to the most elaborate table arrangement.



Cambridge Arms

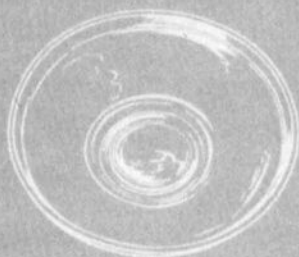


THE CAMBRIDGE GLASS COMPANY, CAMBRIDGE, OHIO, U. S. A.

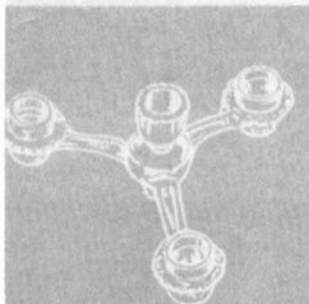
Cambridge Arms



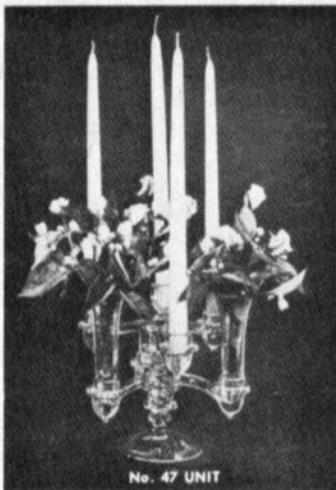
No. 1596 — 6½" CANDLESTICK



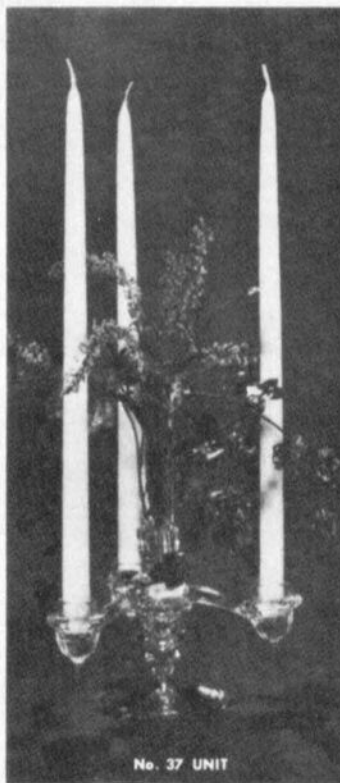
No. 7431 — 12" BOWL



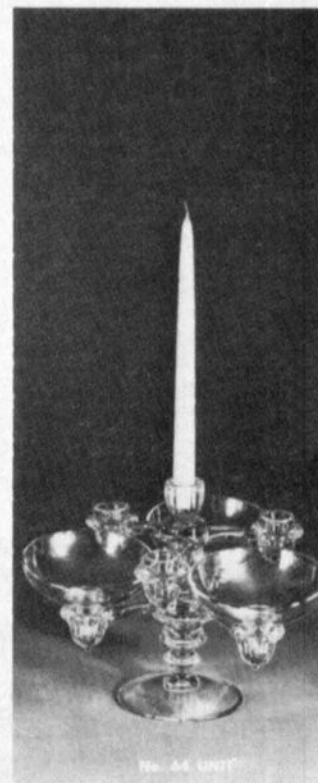
No. 1563 — 4 CANDLE ARM



No. 47 UNIT



No. 37 UNIT



No. 44 UNIT

No. 47 UNIT — This simple but lovely epergne ideal for small settings is created by combining two arms, three peg vases and one low pedestal candlestick. Can be used either low or high. A fine starter unit.

No. 39 UNIT — Tastefully decorated with flowers this unit is a thing of beauty. Consists of one arm with a peg nappy.

No. 43 UNIT — Here is the unique combination of Cambridge pieces which enables you to create scores of different settings . . . a different centerpiece for every meal! Consists of two low pedestals, two "Cambridge Arms", four peg nappies, three peg vases.

No. 40 UNIT — This beautiful creation forms a striking centerpiece for any dinner party. A peg vase is used in the center with two low arms, four peg nappies, one peg vase, put into a low pedestal candlestick arranged as illustrated.

No. 37 UNIT — You can create this lacy looking centerpiece by placing the arm on the low pedestal base with a peg vase in the center well. Consists of one "Cambridge Arm", one low pedestal, one peg vase.

No. 5 EPERGNE — A spectacular arrangement of glassware and flowers. Created by placing the vase arm and "Cambridge Arm" on top of one another in the low pedestal and adding three peg vases.



THE CAMBRIDGE GLASS COMPANY, CAMBRIDGE, OHIO, U. S. A.



No. 628 — LOW CANDLESTICK



No. 39 UNIT



No. 40 UNIT

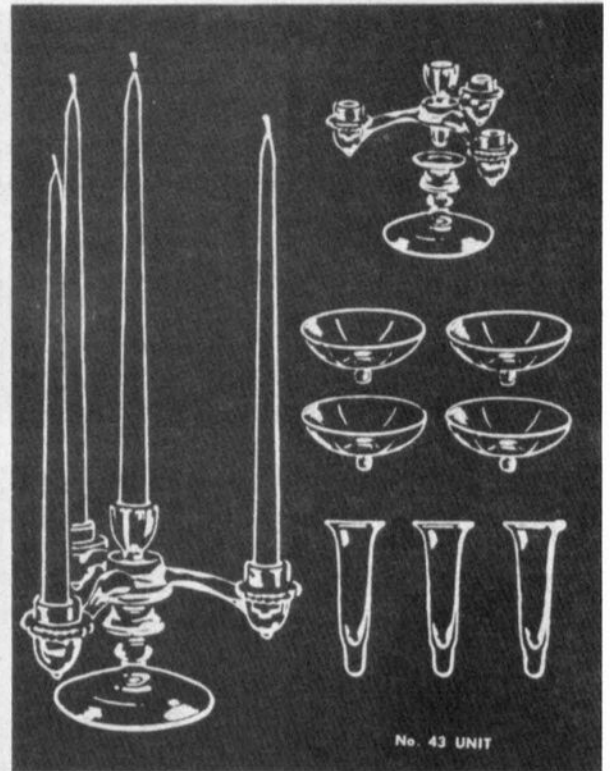


No. 5 EPERGNE



No. 64 UNIT — A beautiful setting suitable for candy, nuts, or low flowers. Can be used for either low or tall centerpiece. Also beautiful with candles and flowers. At the base is the low pedestal. The two "Cambridge Arms" are set in place, with the peg nappies fitting into arms, creating space for flowers.

No. 1596 6½" CANDLESTICK — Truly enhancing the beauty of table or buffet decorations is the graceful Cambridge tall pedestal candlestick. Its beautiful design will help create many striking combinations with other accessories.



No. 43 UNIT

No. 628 CANDLESTICK — The Cambridge low candlestick is the adaptable base upon which many exciting low spreading centerpieces can be built, or with the arms set on top, rises to distinctive beauty in the center of the table.

No. 431 13" BOWL — The "Cambridge Arm" can be effectively used when placed in the beautiful shallow Cambridge P431 bowl.

No. 1563 4 CANDLE ARM — Fruits or vegetables for the harvest season, holly, spruce, pine and mistletoe for Christmas, lillies for Easter . . . all make wonderful centerpieces by using the "Cambridge Arm" in the shallow bowl, or the "Arm" can be used alone as a distinctive candle holder. This is the beginning of all "Cambridge Arms" masterpieces.



No. 1138



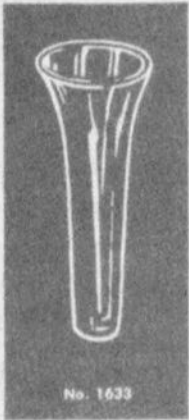
No. 1537-B



No. 1536



No. 2355



No. 1633



No. 1634



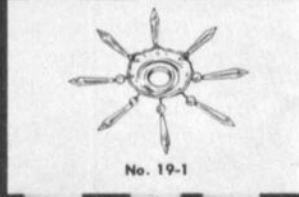
No. 510



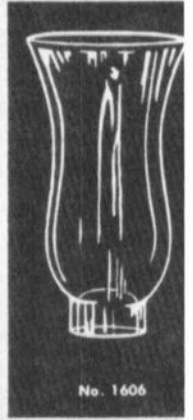
No. 1635



No. 1562

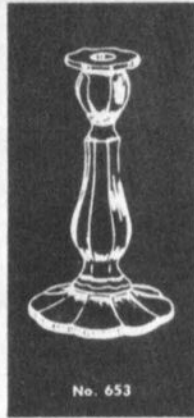


No. 19-1



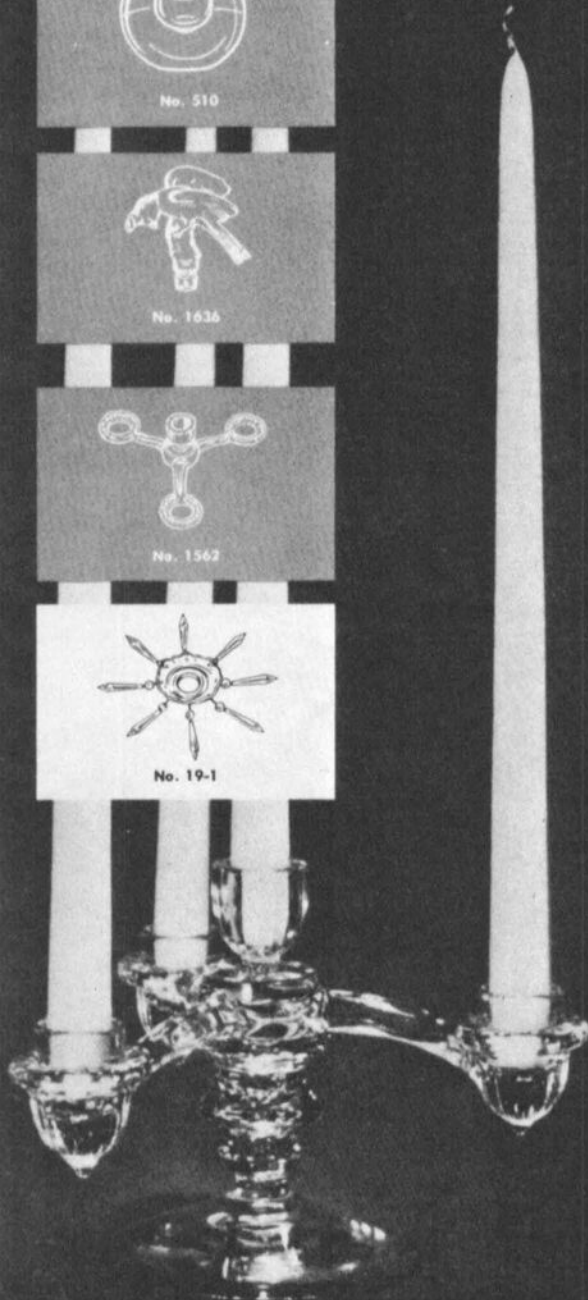
No. 1606

Cambridge Arms



No. 653

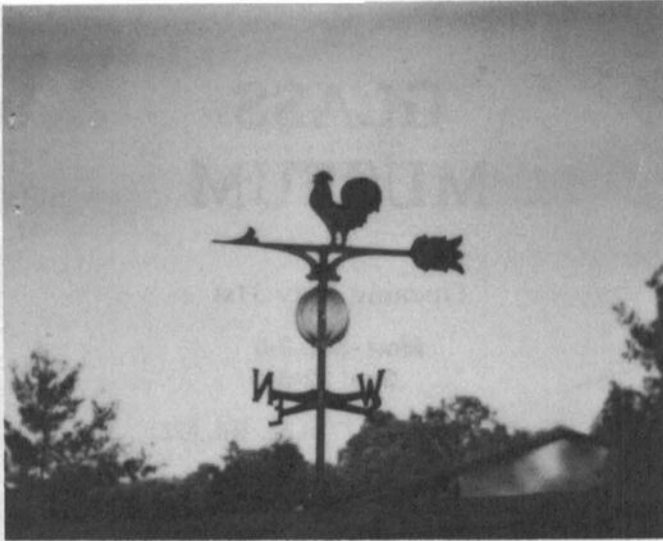
Graceful tall candlesticks, glowing hand-made crystal-clear glass, and lovely flowers make a festive occasion of any dinner. The deluxe units shown in this brochure can be purchased as a complete unit, or you can start with a smaller number of the "Cambridge Arm" units and make up these superb combinations by adding a part from time to time. All this luxury, all this pleasure at a cost far less than you would expect gorgeous glassware to cost!



CAMBRIDGE WEATHER VANE

by Martha Gilbert

We have what we believe to be a "one-of-a-kind" item. A Cambridge glass weather vane!



MARTHA'S WEATHER VANE!

Originally it was an amber Cambridge glass Ivy Ball. When we purchased it, the stem had been broken off and re-glued. I soaked the glue and it came apart nicely. I then had my husband put it on my weather vane! We proudly installed it on our garage! When the sun shines, that weather vane is "Beautiful".

One problem - I can't clean it, so I rely on Mother Nature for rain. It survived the winter without breaking. That's Cambridge Glass for you!!

(Editor's Note: This proves once more there is no end to the imagination of true Cambridge glass collectors! Thanks for sharing this clever idea with us Martha.)

HELP

We need a chairperson to coordinate decorating the tables at the Annual Banquet. If you are interested in helping with the committee in any way, please let Lynn Welker know by writing NCC, P.O. Box 416, Cambridge, Ohio 43725.

We also need volunteers to bring a console set (bowl and candlesticks that match) to be used at the Banquet. These may be either any Cambridge blue (the Convention color) or crystal. Please help as these decorations are a highlight of the banquet.

continued

If you are interested in serving on any Convention committees, please drop us a line. We do appreciate any help that you can lend. Please indicate if you wish to serve on any of these committees: registration, banquet table decorations, book sales, or hospitality.

MOTEL INFORMATION

Please make your motel reservation immediately by contacting: Shenandoah Inn Motel, P.O. Box 147, Old Washington, Ohio 43768 or by phoning (614) 489-5511.

The Club has reserved all of the motel rooms in the wing adjacent to the show room, but these rooms are going fast. If you plan to stay in the motel, you must make your own reservations.

Special rates will be provided to those who specify NCC affiliation. \$12.95 for a room with one double bed (1 or 2 persons), and \$20.00 for a room with two double beds (1 to 4 persons).

There are other motels in the Cambridge area if you do not wish to stay in the Inn. However, the Inn is most convenient as Cambridge is 6 miles from the Inn. All services are available at the Inn including a restaurant, store, barber shop, all car service, and a game room. The Inn is completely enclosed and the motel rooms lead right into the show room.

— Classified —

BUYING DEPRESSION GLASS, Cambridge, Heisey, Fostoria, Akro-Agate, glass figurals and unusual glass "cuties". Nadine Pankow, 207 S. Oakwood, Willow Springs, IL 60480. Phone: 312-839-5231.

TO BUY OR SELL: I have Laurel Wreath goblets, wine glasses and sherbets. Will buy to complete my set or sell to complete yours. Carol Tucker, St. Thomas, ND 58276. Phone: 701-257-6779.

VIRGINIA DUTCHER

R.R. #1, Box 21
Hide-A-Way Hills, OH 43107

FOR SALE

Over 100 pieces of Cambridge glass
with *WILDFLOWER* Etching.
(#3121 Stemware)

Also have a few pieces of Rosepoint and others.

Send SASE for List and Information!

LYDIA NICHOLS

251 Elaine Street
Steubenville, OH 43952
Phone: 614-264-0002

- #3126 Wines, royal blue, 4½" (3) each \$15.00
#3126 Wine, royal blue, 5" 15.00
#3126 Wine, royal blue, 5" (chip on foot) 10.00
Ivy Balls w/ring stem
carmen 35.00
amber 20.00
crown tuscan 40.00
amethyst 25.00
crystal 15.00
royal blue (2) ea. 35.00
green 25.00
Georgian Tumblers, 12 oz. heatherbloom
(4) ea. 45.00
Tumblers, 4½" w/Golf Scene etch.,
pink (3) ea. 15.00
Cornucopia Vase, 9", crown tuscan .. 70.00
Luchon Set, crown tuscan, Gadroon
pattern, 4 plates, 4 cups & saucers 400.00

POSTAGE and INSURANCE EXTRA



DEGENHART PAPERWEIGHT & GLASS MUSEUM

Opening May 31st

Mon.-Sat. 9-5
Sun. 12-5

Located off I-77 at St. Rd. #22
Cambridge, Ohio
(next to Tourist Info cabin)

Come visit us during the N.C.C. Convention

AUCTION

LENA BARNES RESIDENCE Cambridge, Ohio

*(take Rt. #209 West from Cambridge to Rt. #658
North 1½ miles, follow the signs)*

Saturday, May 10, 1980 - 9 AM

This Sale will consist of many items, too numerous to list here.

There will be a large number of CAMBRIDGE, Heisey, and other glass company items, plus Household Goods, Antiques, Furniture, and other miscellaneous!

YOU WON'T WANT TO MISS THIS SALE!

OWNER

Lena Barnes
5323 Sarchets Run Rd.
Cambridge, OH 43725

AUCTIONEER

Mike Clum

ENJOY PLEASANT CAMPING (convenient to NCC Convention)

Buckeye Hills Travel Park

90 SITES

22 water, 36 electric, 8 sewer
Toilets, Showers, Lake w/fishing,
Hiking, Pets on leash.

\$6 Full Hook-Up!

*Located off I-70, exit 186
west 1 mile on old U.S. Route 40*

**For Reservations or Additional Information
WRITE OR PHONE**

Buckeye Hills Camping
Box 506

R.F.D. 4 - Route 40 E
Cambridge, OH 43725
Phone: 614/439-1858

E & N ANTIQUES

Box 7343 Tulsa, OK 74105 (918) 747-5341

CAMBRIDGE GLASS FOR SALE

CROWN TUSCAN (SHELL)

3 Compart. Relish, 3 ftd., hdd. excellent
gold & enamel decor \$88.00
14" torte or cake plate 59.00

AMBERINA HONEYCOMB, 5½" Compt. ... 116.00

KEYHOLE LIGHT BLUE SATIN

3 Lite Candelabra rare? pr. 125.00

ELAINE ETCH CRYSTAL

80 oz. ball jug ice lip 75.00
Cocktail Shaker - Orig. Chrome top 85.00

NUDE STEMS & FL. FROGS

Royal Blue Nude St. Ivy Bowl Cry. St. 125.00
Ameth. Nude St. Ivy Bowl Cry. St. 92.50
Crystal Nude St. Cocktails 42.50
Ebony Nude St. Cocktails Cry. Bowl 60.00
Ebony Nude St. Clarets Cry. Bowl 60.00
8½" Cry. draped lady F.F. 47.50

EAGLE BOOKEND 65.00

ROYAL BLUE KEYHOLE VASE Cry. St. 12" 45.00

COVERED BUTTER #3400 Cry.
Bottom, Peachblo cover 46.50

APPLE BLOSSOM ETCH

Yellow ftd., lidded candy dish #3400
gold trim exceptional 65.00
Yellow M. Washington Candlstk. 25.00
Ftd. Shaker #3400/77 Orig. gl. top 15.00

WILDFLOWER ETCH

Flared Hurricane Shade - Super 47.50

GLORIA ETCH YELLOW

#3400/67 Relish 12" diam. 33.00

ROYAL BLUE WATER SET

#3400 Ice Lip Ball Jug 8 tumblers \$111.00

CORNUCOPIA VASE MAND. GOLD 35.00

SPIRAL OPTIC PITCHER 10 OZ.

Light Blue Satin - Very unusual 50.00

HELIOTROPE BOWL GOLD DECOR. 33.00

CAPRICE PINK CRY STEMS

Sherbet #3130 Stem 18.50
Tumbler #3130 Foot. 18.50

CAPRICE MOONLIGHT BLUE

6 Tall Heavy Sherbets 20.00
3 Heavy Sherbet Liners 20.00
Compote Heavy 5" h 6" d. 32.00
Heavy Goblet 20.00
Heavy Sundae 15.00

CAPRICE CRYSTAL

Alpine 12" bowl flared & fluted 22.50
#3130 Goblets (3) 12.50
#3130 Sherbets (3) 12.50
#3130 Ftd Tumblers 12.50
Individual Sugar 4.75
Standard Sugar 4.75

EVERGLADE M.B. Sherbet

15.00

CLEO ETCH BLUE

12" diam "flip" console bowl 37.50

MT. VERNON

9 tall Sherbets 5.25
6 8½" Plates 5.00
4½" Rosebowl 12.50
14 oz. tumbler 6.50

*All Prices each except as noted, All items mint except as noted, P&I Extra
88% DISCOUNT ON ABOVE IF YOU PAY WITH 1964 & PRIOR U.S. SILVER COINS
(SILVER DOLLARS, HALVES, QUARTERS & DIMES).*

Tenth Annual Antique Show and Sale Heisey Glass Display

Newark Branch - O.S.U. Campus

Country Club Drive, Newark, Ohio

Sponsored by

Heisey Collectors of America, Inc.

Benefit National Heisey Museum



Thursday, June 19th—12:00 Noon to 8:00 P.M.

Friday, June 20th—12:00 Noon to 5:00 P.M.

Saturday, June 21st—12:00 Noon to 8:00 P.M.

Sunday, June 22nd—12:00 Noon to 5:00 P.M.

Donation \$1.75

Over Fifty (50) Quality Dealers

25¢ OFF with this Ad!

BOOKS FOR SALE

All of the available reference books relating to Cambridge glass can be ordered directly from the Club.

Address your orders for any of the following to:

BOOKS

National Cambridge Collectors, Inc.
P.O. Box 416
Cambridge, Ohio 43725

Please add \$1.00 (P & I) on each book order.
(Not required for Price List only orders)

Ohio residents please add 4½% State Sales Tax.

by National Cambridge Collectors, Inc.

1956-1958 CAMBRIDGE GLASS CO. CATALOG REPRINT
(164 page reprint of original catalog)
Paperback \$6.95

1949-1953 CAMBRIDGE GLASS CO. CATALOG REPRINT
(300 page reprint of original catalog)
Hardbound with Price Guide \$14.95

1930-1934 CAMBRIDGE GLASS CO. CATALOG REPRINT
(250 page reprint of original catalog)
Hardbound with Price Guide \$14.95

1978 PRICE GUIDE
for 1930-1934 catalog reprint \$2.00

by Mary, Lyle, and Lynn Welker

CAMBRIDGE GLASS CO.
(120 pages of reprint from 8 old catalogs) \$6.95

CAMBRIDGE GLASS CO. BOOK II
(119 pages of reprint from old catalogs) \$6.95

CAMBRIDGE, OHIO GLASS IN COLOR II
(15 color plates w/descriptions and notes) \$5.95

by Harold and Judy Bennett

THE CAMBRIDGE GLASS BOOK
(96 pages with 59 color plates) Paperback \$7.95

1903 CAMBRIDGE GLASS CO. CATALOG REPRINT
(106 page reprint of an original catalog) \$7.50

by Charles and Mary Alice Upton

1979 PRICE GUIDE to the CAMBRIDGE GLASS BOOK
(Prices for each item in Bennett book) \$2.00

ANSWERS TO CROSSWORD PUZZLE!

23 Ho	1 Sugar	30 Nude	1 Swan
25 Wine	2 Vase	31 Hello	3 Everglade
27 Ashtray	4 Vine	32 Eagle	7 Grape
29 Goblet	5 Diane	35 Cordial	10 Pilsner
33 Arm	6 Golf	36 Muddler	11 Cereal
34 Mustard	8 Epergne	38 Rye	12 Leg
37 Decanter	9 Salt	40 Coaster	14 Nut
38 Relish	11 Cloud	43 Lace	15 Bridgehead
39 Cobalt	13 Ritz	45 Band	17 Decagon
41 Spade	15 Bunnybox	46 Diamond	21 Eching
42 Crown	16 Dog	47 Stem	24 Drapelady
44 Cleo	18 Champagne	48 Rooster	26 Brandy
	19 Narcot	49 Ebony	28 Tulip
	20 Ivy		29 Gin
	22 Tray		

"In investing money, the amount of interest you want should depend on whether you want to eat well or sleep well."
J. KENFIELD MORLEY



HAVE YOU OBTAINED A NEW MEMBER?

contest will end **May 15, 1980**

VOTE FOR BILL TURNER
for
Board of Directors

*Qualified Collector
Willing to work
Interested in future of NCC, Inc.*

Paid for by Committee to elect Bill Turner

Jo and Gerald Barstow
Janice & Larry Hughes
Lynn Welker
Frank and Vicki Wollenhaupt
Joy McFadden
Charles & Marybelle Moorehead
Charles & Mary Alice Upton
Ed & Loraine Wollenhaupt
Russell & Joanne Vogelsong
Willard & Norma Kolb
Paul & Jean Carter

DEALERS



DIRECTORY

NOTE: When writing to the Dealers listed here, please enclose a SASE!

<p>EVELYN M. ALLEN 135 Cynthia Street Heath, Ohio 43055 Mail Order & Shows 614-522-1635 SPECIALIZING IN CAMBRIDGE GLASS!</p>	<p>BENICIA ANTIQUE SHOP 305 First Street Benicia, California 94510 OPEN 11 AM - 5 PM Closed Monday Z. E. LOPES 707-745-0978 VISIT HISTORIC BENICIA and its 28 shops Off Interstate #80 North of San Francisco</p>	<p>CHARLES MIKULIK Box 416 Elizabeth, N.J. 07207 — COLLECTOR — Always paying good prices for CAMBRIDGE CAPRICE in all colors 201-372-1101 CARRY MOST TYPES OF ANTIQUES</p>
<p>BLACK ROOSTER ANTIQUES 1018 Clark Street Cambridge, Ohio 43725 614-432-3202 M. Sipe CAMBRIDGE GLASS - GENERAL LINE</p>	<p>COLLECTORS II 414 S. Washington Olympia, WA 98501 Ruby Gilmer & Pauline Christensen 206-754-7808 GLASSWARE — POTTERY — COLLECTIBLES</p>	<p>COYLE & SCHUSTER ANTIQUES Box 982 - Ph. 614-349-7362 Newark, Ohio 43055 Shows & Mail Order BUY & SELL - CAMBRIDGE - HEISEY</p>
<p>CHURCH STREET ANTIQUES 6 Church Street Boston, Massachusetts 02116 George or Frank 617-426-1048 CAMBRIDGE, HEISEY, GENERAL LINE</p>	<p>D & D ANTIQUES 184 East Kossuth Street (GERMAN VILLAGE) Columbus, Ohio 43206 DICK SLIFKO 614-443-6020</p>	<p>D'MARIE'S ANTIQUES US Rt. 1 - just South of Rt. 606 Thornburg, Virginia 22565 703-582-6220 Jim Rankin OPEN EVERY DAY 10 AM to 6 PM</p>
<p>D & D ANTIQUES 184 East Kossuth Street (GERMAN VILLAGE) Columbus, Ohio 43206 DICK SLIFKO 614-443-6020</p>	<p>D'MARIE'S ANTIQUES US Rt. 1 - just South of Rt. 606 Thornburg, Virginia 22565 703-582-6220 Jim Rankin OPEN EVERY DAY 10 AM to 6 PM</p>	<p>FINDER'S KEEPER'S ANTIQUES P.O. Box 303 Dayton, O. 45401 P.O. Box 16023 Columbus, O. 43216 513-254-2937 614-885-2726 SPECIALIZING IN CAMBRIDGE GLASS!</p>
<p>THE GLASS CUPBOARD 39 Shire Oaks Drive Pittsford, New York 14534 Marcia Ellis 716-586-7596 CAMBRIDGE ONLY SASE FOR LIST</p>	<p>GEORGE HOFFMAN ANTIQUES 129 South 4th Street Newark, Ohio 43055 614-345-8021</p>	<p>'OUR GLASS ANTIQUES Box 27, Wills Point, Texas 75169 20th CENTURY COLLECTIBLES featuring CAMBRIDGE GLASS! Shows - No Lists - SASE Please PAUL & GINNY HENDERSON 214-563-6971</p>
<p>LASHER ASSOCIATES 119 Water St. Gaithersburg, Md. 20760 Faith Lasher 301-977-8296 SPECIALIZING IN GLASSWARE</p>	<p>THE MOUSE HOUSE ANTIQUES Route 22 East Cambridge, Ohio 43725 Shirlee Bistor 614-432-3132 SPECIALIZING IN GLASSWARE!</p>	<p>1886 HOUSE East Schodack, N.Y. 12063 MAIL and SHOWS Laurie Cruise 518-477-5895 CAMBRIDGE - NORITAKE - AZALEA - D.G.</p>
<p>M & M ANTIQUES & COLLECTIBLES 310 N. Main - Box 417 Canton, Kansas 67428 The Martin's 316-628-4705 SPECIALIZING IN CAMBRIDGE GLASS!</p>	<p>ROLLING ACRES ANTIQUES 66484 N. 8th Street Road Cambridge, Ohio 43725 Sandy Jenkins & Anne Ingram 614-432-2570 CAMBRIDGE & GENERAL LINE ANTIQUES</p>	<p>BILL & SHARON PHILLIPS 21730 Priday Euclid, Ohio 44123 Ph. 216-261-4665 Shows Only BUYING GLASS, ANTIQUES, ETC.</p>
<p>CHARLES A. SHAW Glenwood Gardens - R.V.W.1B Yonkers, NY 10701 AMERICAN GLASS — 914-476-5175 SHOWS & MAIL ORDER!</p>	<p>AL STEELE Westerville, Ohio 614-882-6483 or 614-882-7124 Mail Orders and Shows Only HEISEY — CAMBRIDGE — PATTERN GLASS</p>	<p>SWISS HILLS COLLECTIBLES Mary & Wilbur Henderson 303 Guilford Avenue Woodsfield, Ohio 43793 Mail & Shows 614-472-1133 SPECIALIZING IN CAMBRIDGE GLASS!</p>
<p>THREE FRIENDS ANTIQUES CO. 3930 Broadview Rd. Richfield, OH 44286 Hours: Tues.-Sat. 10-4, Sun. 12-5 Phone 216-659-3930 WE BUY & SELL CAMBRIDGE!</p>	<p>THIS 'N' THAT PLACE 101 South Street Chagrin Falls, Ohio 44022 Lue Koerper 216-247-4938 OPEN THURS. - SAT. 10 AM - 5 PM</p>	<p>WICKFORD ANTIQUE ARCADE 650 Ten Rod Road North Kingstown, RI 02852 The Clausons 401-295-7520 SPECIALIZING IN GLASSWARE</p>



ANTIQUÉ SHOW & SALE

(& 7th Annual Convention)

SHENANDOAH INN

INTERSTATE 70 .. EXIT 186 .. 7 MILES EAST OF
CAMBRIDGE, OHIO

JUNE 27, 28, 29, 1980

FRIDAY, JUNE 27th	6:00 - 9:00
(PREVIEW ADMISSION \$3.50)	
SATURDAY, JUNE 28th	11:00 - 6:00
SUNDAY, JUNE 29th	12:00 - 6:00
(ADMISSION \$1.75)	

OFFERING CAMBRIDGE AND OTHER FINE GLASSWARE
ALONG WITH A GENERAL LINE OF ANTIQUES
FOOD **DOOR PRIZES** **PARKING**

1980 CONVENTION

and

ANTIQUÉ SHOW & SALE

JUNE 27, 28, 29, 1980



Shenandoah Inn

P.O. Box 147, Old Washington, Ohio 43768
Phone - 614-489-5511

(Interstate 70 - Exit 186 - 7 miles East of Cambridge, Ohio)

National Cambridge Collectors, Inc.
P.O. Box #416
Cambridge, Ohio 43725

FIRST-CLASS MAIL
U.S. POSTAGE
PAID

So. Vienna, Ohio
45369
Permit No. 15

FIRST CLASS MAIL

MAKE PLANS TO ATTEND ALL
NCC CONVENTION FUNCTIONS!

*"Talk happiness. The world is sad enough
without your woe."*

ORISON SWETT MARDEN