

Cambridge



Crystal Ball

ISSUE NO. 84

APRIL 1980

Published monthly by the NATIONAL CAMBRIDGE COLLECTORS, Inc.
To encourage and to report the discovery of the elegant and boundless product
of the Cambridge Glass Company, Cambridge, Ohio

Thoughts from the President - - - -

National Cambridge Collectors, Inc. purchases property! Yes, we are finally making real advances toward having our Museum.

On March 14, 1980, your president; treasurer, Ruby Landman; and museum committee member, Jo Barstow, met in Cambridge for the Closing on our purchase of the property mentioned in last months CRYSTAL BALL.

The center of this property lies just about one thousand feet east of Interstate 77 on the north side of U.S. Route #40, and approximately one half mile east of the city limits of Cambridge. It is just slightly over two acres in area, with two hundred and eighty feet of frontage on U.S. 40.

The building on the premises was originally constructed as a Drive-in restaurant, and still carries all of the characteristics of such buildings. It is a flat roofed, one story, basically square, concrete block building with a drive-in island that is under roof to the one side of the building.

At present it is rented to the agency that has the contract for selling motor vehicle and driver's licenses in that area of the county. It has served many different uses since it's demise as a restaurant, all being more in the nature of an office.

We are purchasing this property on a Land Contract that specified a total purchase price of \$55,000, to be paid as follows. \$5,000 down payment at the time of closing, and \$500 per month for the duration of the five year contract. The contract also provided a potential of early pay-off without penalty at the end of two years and nine months.

Our financial status is such that we have been able to make our down payment and to invest sufficient additional funds in high yield notes to assure the capability of pay-off at the end of the penalty period. This does not speak to the monthly payments that we are obligated to until the end of our two years and nine months. Our annual gains over the past four years has been just at the ten thousand dollar figure, which should see us through our obligation with very little if any problems. It does say, however, that we will be required to continue with no less than our past efforts.

We cannot make any statements at this time to the effect that this will definitely be our Museum location. We can only say that this will have to depend upon the outcome of studies regarding the costs of remodeling or building and the ability for us to raise the additional capital that will be required. We will also have all of the additional costs that will be inherent with the furnishing of a museum.

The final outcome of this start will be dependent upon two very important factors; one, our ability as officers and directors to provide you with the best possible course of action, and two, your encouragement and support of the action. Your president, for one, has confidence that both requirements WILL BE met.

Happy Easter! Bill

MEMBERSHIP RENEWAL NOTICE
If the date on your address label is - - **4 - 80**
This is your LAST ISSUE of the CRYSTAL BALL. Please renew NOW!

See page 6 for photo of building.

CAMBRIDGE CRYSTAL BALL

Official publication of National Cambridge Collectors, Inc., a non-profit corporation with tax exempt status. Published once a month for the benefit of its members. Back issues of the CRYSTAL BALL are available to members only, at a cost of 60¢ each or 12 issues for \$7.

Membership is available for individual members at \$10 per year and additional members (12 years of age and residing in the same household) at \$3 ea. All members have voting rights, but only one CRYSTAL BALL will be mailed per household.

1979-80 OFFICERS & COMMITTEE CHAIRPERSONS

PRESIDENT William C. Smith
 VICE-PRESIDENT Lynn Welker
 SECRETARY Janice Y. Hughes
 TREASURER Ruby Landman
 SERGEANT-AT-ARMS George W. Hoffman
 BUDGET & FINANCE William C. Smith
 BY-LAWS David B. Rankin
 CONVENTION Lynn Welker
 MEMBERSHIP Josephine A. Barstow
 MUSEUM Arnold Lynd
 PROGRAM & ENTERTAINMENT Frank Wollenhaupt
 PROJECT Willard Kolb
 PUBLICITY Don E. Armbrecht
 STUDY GROUP ADVISORY John F. Rettig

1980 ALL-CAMBRIDGE AUCTION Lynn Welker
1980 ANTIQUE SHOW

CRYSTAL BALL EDITOR Phyllis D. Smith

CLASSIFIED ADVERTISING RATES

5¢ per word \$1.00 minimum
We cannot mix type size in classified advertisements. Abbreviations and initials will count as words. Payment in full MUST accompany all ads.

DISPLAY ADVERTISING RATES

	Members	Non-Members
1/8 page	\$ 4.00	\$ 6.00
1/4 page	7.00	10.00
1/2 page	12.00	18.00
3/4 page	17.00	25.00
Full page	22.00	33.00

DEALERS DIRECTORY

1" ad \$6.00 for 6 months

Cambridge CRYSTAL BALL assumes no responsibility for items advertised and will not be responsible for error in price, description or other information.

Advertising copy must be in our hands by the 15th of each month to assure publication in our next issue. Advertisements containing reproductions will not knowingly be accepted unless clearly stated.

PLEASE ADDRESS ALL CORRESPONDENCE TO
CAMBRIDGE CRYSTAL BALL
National Cambridge Collectors, Inc.
P.O. Box #416
Cambridge, Ohio 43725

PLEASE NOTIFY US IMMEDIATELY OF ANY CHANGE
IN YOUR ADDRESS!

Please enclose a self-addressed, stamped envelope
when requesting information!!

Club News

National Cambridge Collectors, Inc.

Quarterly Meeting

February 29, 1980

Shenandoah Inn, Old Washington, Ohio

The meeting was called to order at 8:10 P.M. by President Smith. In attendance were 9 Board Members and 70 club members from 4 states. The minutes of the November 3, 1979 meeting were read by Janice Hughes and approved. The Treasurer's report was given by Ruby Landman showing the club has a balance of \$1412.57 and the Museum Fund \$38914.29.

COMMITTEE REPORTS

BY-LAWS: No report.

CONVENTION: Chairman Lynn Welker reported details will appear in the next CRYSTAL BALL.

CRYSTAL BALL: Editor Phyllis Smith reported the CRYSTAL BALL will be mailed on Tuesday the 4th of March. Two renewal notices are now being sent, a pink one first and later a white one. Since the Index came out, back issues have been sold in the amount of \$205.20. Luene Brandt is working on the 1979 Index and it should be ready by Convention. Two spaces for Dealer Directory ads are now available.

MEMBERSHIP: Chairman Jo Barstow reported we now have 702 \$10.00 members, 281 \$3.00 members, 5 Honorary Members for a total of 988. Bill and Phyllis Smith acquired 23 new members while on vacation in Florida. The Smiths are not eligible for the "most new members" contest.

PROJECT: Chairman Willard Kolb reported he had been checking on the possibility of a raffle but as we are not a charitable organization we are not eligible. He displayed the CRYSTAL BALL binders which will hold one or two years issues. They may be for sale later at a cost of approximately \$6.00 each. The Lion book-ends should be ready by May or Convention time. He advised we will hold a mini-auction at the get-acquainted party on June 27 and would appreciate glass donations for this.

PUBLICITY: Chairman Don Armbrecht reported articles on Cambridge Glass have appeared in two week-end editions of the Cleveland Plain Dealer. Janice Hughes reported articles were also appearing in the Chicago Tribune courtesy of Grace Carolyn Dahlberg.

STUDY GROUP ADVISORY: Janice Hughes reported in the absence of Chairman Jack Rettig that a new Study Group in the Cambridge area will be voted on at the Saturday Board Meeting. The Michigan Study Group has not been affiliated as yet.

BUDGET AND FINANCE: President Smith advised we are taking a close look at the finances that are available.

continued on page 12

EASTER BASKETS ANYONE?

by Doris Isaacs

With Easter just around the corner, we thought perhaps we would share with you, these three little "Easter" baskets.

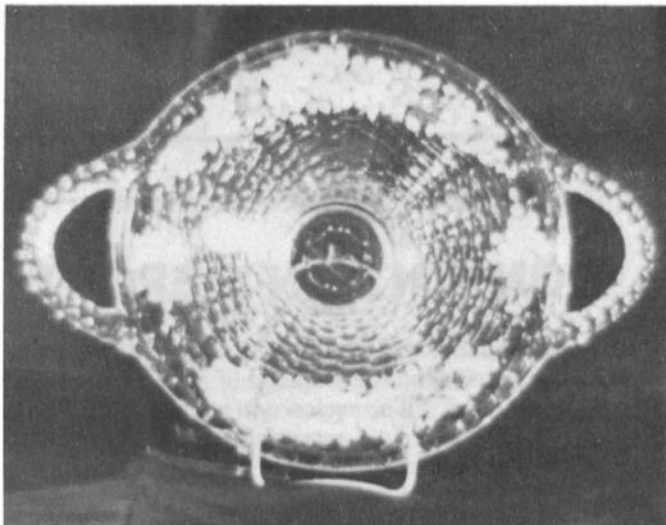


PHOTO #1

Photo #1 shows the #1506/4, 5" Novelty Basket. It is plate shaped, in light blue color, and is signed with the c in a triangle. The 5" measurement does not include the handles. The factory decoration of colorful flowers and leaves, combined with the basketweave pattern, gives a delightful old fashioned look. We also have a slightly flatter version of the same basket, undecorated, in Mocha, signed with the c in a triangle. (ref: Welker I, page 34)

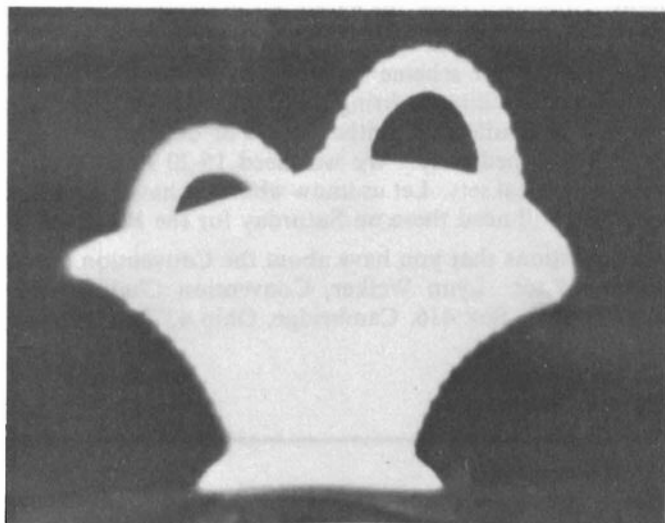


PHOTO #2

Photo #2 is of the #1506/1, 4" Novelty Basket. This basket actually measures 3 3/8" across the handles and 4 1/4" across the top. It is signed and the color is a beautiful pale pink Crown Tuscan. In fact, the color is so pale that it has been mistaken for white milk glass. (ref: same as for photo #1)



PHOTO #3

Photo #3 is a darling #2800/122 "Community" crystal basket with applied handle. The measurements of this little basket are: base diameter 1 5/8"; height to top of handle 4 1/4"; and 3" across the top. It is not signed. (ref: Welker I, page 34)

All of these pieces were purchased from friends or shops during the past four years. Price range should run from \$15 to \$35. The flat basketweave ones will be easier to find than the Crown Tuscan basketweave or the Community one.

In case the Easter Bunny doesn't bring your basket and you have to look for your own -- Happy Hunting!

MUSEUM DONATIONS

The following items have been recently donated to the Museum Fund.

Cancelled pay checks of Cambridge Glass Company employees, dated 4-6-29.

donated by Paul Cater, Cambridge, Ohio

Union Transfer Card in the name of F. R. Degenhart, dated 4-8-36.

donated by Mrs. Marilyn Estock, Byesville, Ohio

Cash donation of \$50.00, from the Arizona Depression Glass Club.

A piece of Cambridge Glass Company letterhead, showing the factory and listing W. L. Orme, President & Gen. Mgr.; G. Roy Boyd, Vice-Pres. & Treasurer; and W. C. McCartney, Sec'y & Sales Mgr.

donated by Margaret Scheffer, Akron, Ohio

All donations are gratefully accepted, and a special "Thanks" is extended to those persons mentioned here.

PROJECTS

For those who were not able to attend the quarterly meeting, that was held in conjunction with the Annual Auction, we will fill you in on what is happening with projects.

First the raffle, that we were so intent on having, has fallen through completely, and has taken away one of the prime ways that we had to raise money quickly, and take some of the financial burden off of the membership itself. To check on the legality of our holding a raffle we wrote letters to the Secretary of State, the Attorney General and the Postmaster General, to get a ruling. We did not want to jeopardize our non-profit tax exempt status by doing anything illegal. We received letters from the Secretary of State and from Karen Nowak an assistant Attorney General in the Charitable Foundations Section along with the Ohio Code Supplement which covers schemes of chance. A raffle, being a scheme of chance and covered by the Bingo act, is only legal to those organizations that qualify as charitable organizations under the Bingo Act. Although we are non-profit and also a charitable organization, we do not qualify as a charitable organization under the Bingo Act. There are very few organizations that do qualify, and they have to be licensed. Not being completely satisfied with these rulings we contacted Karen Nowak by phone and she very kindly answered all of our questions. The sum total being, we should not attempt to hold a raffle since it would show on our annual audit, which goes to the Charitable Foundations Section of the Attorney Generals Office and we would be caught.

Secondly, the binders for the CRYSTAL BALL are progressing favorably. We had two of the spring loaded Elbe binders, which Len Weinberg had sent, at the Quarterly Meeting and the reaction was very favorable. Everyone we talked to liked them. Although the price is probably going to be around \$6.00, and may seem a little high, you would only have to buy one every year or two after the initial amount needed to hold your back issues. The binders will comfortably hold two years issues. They are nice looking and would make a welcome addition to anyone's bookcase.

Now for the project that has seemed to elude us for so long, the Bookends. We will have bookends sometime in the near future, hopefully the Lion. Everything we requested from Lucile Kennedy at Imperial is being considered. The main thing we need now from Imperial is the cost of production. This is taking some time because, as we understand, they will have to run it through R. & D. to arrive at a fair price. When we receive this information we will get production started as soon as possible.

Another project we have is the Mini-Auction we hold at some of the Quarterly Meetings. We are going to have another one at the "Get-Acquainted Party" at the Convention this year. All of the glass we auction off is donated and the money goes to the Museum Fund. Now all we need is for everyone to donate some glass. Again it doesn't have to be anything valuable. "Colonel" Kolb, the auctioneer, will make it sound valuable when he auctions it off! If you have anything, please send it as soon as possible or bring it with you when you come to the Convention. We already have one piece to start with, sent up from Florida by Al Springborn. Thanks Al. We hope you are only the first of many who will contribute.

If you have any ideas for projects, please don't hesitate to contact us and we will do everything we can to promote them.

Your Project Committee: Willard P. Kolb, Chairman
Norma Kolb
Janice Hughes
Charles Upton

CONVENTION REPORT

Plans are well under way for the 1980 Convention to be held at the Shenandoah Inn the weekend of June 27, 28, and 29. Registration forms will be enclosed in your May CRYSTAL BALL. The motel is now accepting reservations for June. You may make your reservations by writing to: Shenandoah Inn, P.O. Box 147, Old Washington, Ohio 43768 or phoning 614-489-5511.

Features of the Convention will be the Antique Show, Display Room, and various educational talks and slide shows on Cambridge Glass. Our Banquet speaker will discuss Cambridge colors and our Breakfast speaker will present a slide program on reproductions and confusing items. We will also present two informative slide programs on Saturday afternoon.

If any members or Study Clubs, not in the Cambridge area, are willing to work in the areas of Registration, Book Sales, or as Greeters, please let us know as soon as possible. The more people working, the easier it will be for those who do so many things at the Convention.

This year's color scheme for the Convention will be Blue. If anyone is willing to bring a blue Cambridge console set (bowl and candlesticks, either single or double), please let us know immediately. We will need 15-20 sets. We may also use crystal sets. Let us know what you have that we can use. We will need these on Saturday for the Banquet.

Any questions that you have about the Convention may be addressed to: Lynn Welker, Convention Chairman, c/o N.C.C., P.O. Box 416, Cambridge, Ohio 43725.

IN MEMORIAM

GEORGE PAULSON
DIED MARCH 2, 1980
Leola, Pennsylvania

The membership of N.C.C. extends
sincere sympathy to his wife
Eleanore and their family.

SHARING INFORMATION

by Bill Gaston

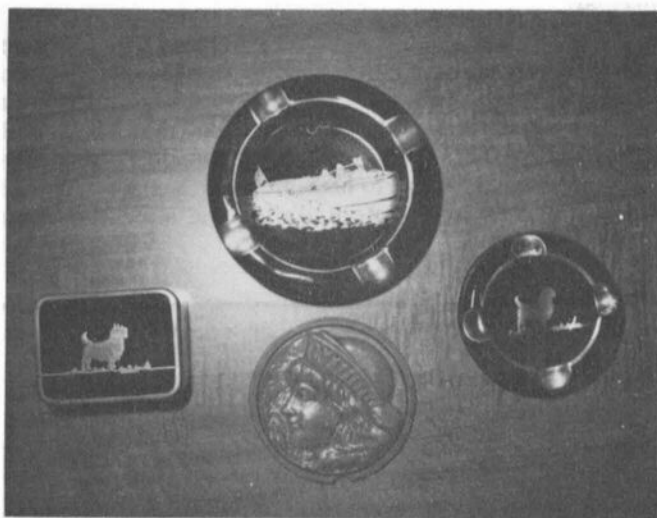
I hope this will stir up some questions with all of the fortunate individuals that have old catalogs or have access to information that is not available to the public at this time. And, then again, maybe someone has the answer already.

Some months ago I purchased, at a local flea market, a 4¼" round lid-type piece of heliotrope. Overall thickness is ⅝" with a ¼" X ¼" lip. The piece has a side view of a lady's face, facing from right to left, Art Nouveau style (hair flowing) with a liberty-type design on her head, as it is on a ten cent piece. It is a pressed piece and is very sharp in quality and depth. The back has no design.

On the outside edge, directly below center of head, there is a notch (molded) that resembles a place for a spoon, as is on a mustard jar lid; but, in my opinion, I don't think this was the purpose, as there is no knob to lift the piece up. I believe at some time this was either made to receive a metal ring or had a metal ring around the piece to resemble a ten cent piece. Possibly the metal ring had a clip on it or was molded to the piece and the metal went up into the notch to keep it in place so it would not turn on the piece of glass.

I have let my imagination run wild and thought possibly the metal ring had a handle on it, and it was used as a powder box lid or possibly even a change or pin box for a lady's dressing table.

Hope this gives you something to look for on a rainy night!



Also, at this time, I would like to inform the collectors of Cambridge Glass that, out there somewhere, there are pieces of Ebony with silver overlay with Cairn Terriers, **not** Scottish Terriers, as seen on the Smoker items and Sport Novelties. I have three such pieces, which are Smoker items. One cigarette box with lid, not signed, and two of the stack-type ashtrays, which are signed with the c in a triangle. I have also found a motor boat ashtray, with two people in the boat in silver overlay on Ebony, signed with the c in a triangle. The pieces were most likely made for specialty clubs, as gifts or trophies. An interesting point is in the ashtrays with the

Cairn Terriers. The inside of the tray is rolled, or indented, so that the dog structure (conformation minded) is well balanced, so that you are not looking at a flat surface.

With the understanding, that we would all like to share information within our club, any additional questions or replies can be directed to: William D. Gaston, c/o N.C.C., P.O. Box 416, Cambridge, Ohio 43725. I am always interested in sharing and communicating with other glass enthusiasts.

CONVENTION DISPLAY ROOM

by Willard P. Kolb, Chairman

After Dave Rankin's informative talk on Cambridge Blues at last years Convention, and his follow up in the CRYSTAL BALL, we felt that the only thing remaining to make us all experts in determining which blues we have, is to display a few hundred pieces together so that we can see the difference! Therefore, the Display Room this year will be all blues. We hope that this will not only be educational, but will stimulate more research by individuals.

In this issue of the CRYSTAL BALL, you will find a form for listing the glass you would like to display. If you are not sure which blue a piece may be, list it as what you think it is and we will have someone knowledgeable determine which color it is when you bring it.

On the bottom line of the form which reads "pieces that are combined with another color where the blues are dominant" there may be some confusion. An example would be an Ivy Ball with crystal stem and foot and royal blue bowl or vice versa.

Again, start as soon as possible in making your lists so that we can have them by May 15. There is a lot of work coordinating the lists so we would like to get them early. Also, please try to list the glass by number, etchings, size and anything else that will help us determine exactly what you have. After we receive the lists we will coordinate them and send you a list of the pieces we will need. You can then put your insurance value on them and return them to us.

The glass will need to be at the Display Room the evening of June 26th, or the morning of the 27th at the latest, so we can have time to arrange it.

Last year there was a great response by people wanting to serve as Host and Hostess in the Display Room during the Convention. Again this year there will be arrangements made during registration to indicate the time you would like to serve.

The Display Room committee will be busy receiving glass and arranging it, so please give them a chance to do their work by not asking to come into the Display Room before it is opened for viewing.

The Display Room is for your benefit and education, so please try to help in anyway you can, especially by bringing glass.

QUARTERLY MEETING and AUCTION REPORT

photos courtesy of Willard Kolb

by Phyllis Smith

The Quarterly meeting and Auction "Preview" held on Friday evening, February 29th, was an outstanding success. The approximately eighty members and guests in attendance were treated, not only to a preview of the glass to be auctioned the next day, but also to an extremely interesting Program and "Show & Tell" session.

At the conclusion of the business meeting, Charles Upton enlightened us concerning the research he has been conducting over a period of several months. This research concerns the land that the Cambridge Glass Company buildings stand on yet today. He began by telling us about the original Land Grant of 1801 and brought us up to the present owner of the land and buildings! You might think this sort of information would not be particularly fascinating, but Charles managed to make it both interesting and amusing, with the many sidelights of interest he has been able to ferret from his intensive research. It would be impossible to go into the many details he shared with us, but this information will be available for those interested, for study during our Convention in June.

The "Show & Tell" session led by Lynn Welker included many rare and unusual items, much to the enjoyment of all present. The meeting was not adjourned until 10:15 PM.

The Auction began at 11 AM the following morning and was attended by approximately 200 persons. The bidding was swift and everything went according to schedule. As you can see, beginning on page 11 of this issue, there were a few items added at the last minute and also three items on the list that were not sold because they were not Cambridge glass. Prices seemed to be satisfactory with most everyone. It is difficult to try to analyse the results of an auction such as this, because of



Auction Glass!

the vast variety of items offered. So, we will leave the analysis up to each of you, and allow you to draw your own conclusions as to where prices paid for Cambridge glass are headed!

As always, the arrangement of the glass was absolutely breathtaking, and the entire auction was handled in a most professional manner. A lot of hard work went into making this the outstanding and profitable affair that it was, and a great deal of "THANKS" must be extended to not only our Auction Chairman, but to his committee, and everyone who worked so very hard, before, during and after, this annual affair!



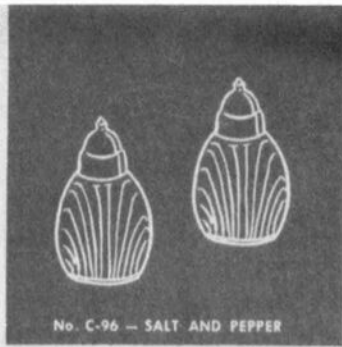
Auction Glass!



A view of the building on the recently purchased NCC property.



No. 1476
TALL SALT AND PEPPER



No. C-96 — SALT AND PEPPER



No. 1258 — SALT AND PEPPER



No. 3900/37
SUGAR AND CREAM TRAY



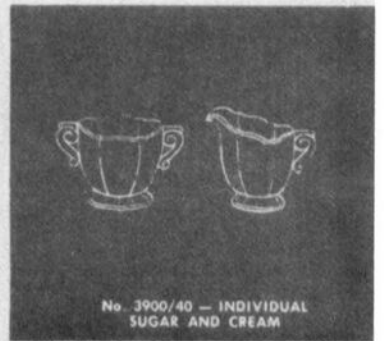
No. 3900/1177
SALT AND PEPPER



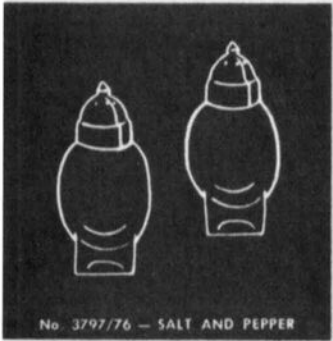
No. P-360 — SALT AND PEPPER



No. P-361 — 3-PIECE
SALT AND PEPPER



No. 3900/40 — INDIVIDUAL
SUGAR AND CREAM



No. 3797/76 — SALT AND PEPPER



No. C-37
SUGAR AND CREAM TRAY



No. 1957/112 — SALT & PEPPER



IND
No. 3900/38 — 3-PIECE
SUGAR AND CREAM SET



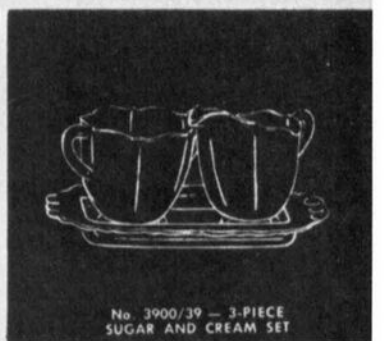
No. C-38
FOOTED SUGAR AND CREAM



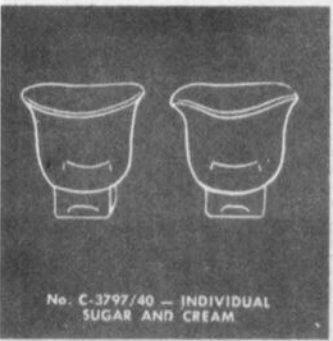
No. 3500/15 — INDIVIDUAL
SUGAR AND CREAM



No. 1525 — OPEN SALT



No. 3900/39 — 3-PIECE
SUGAR AND CREAM SET



No. C-3797/40 — INDIVIDUAL
SUGAR AND CREAM



No. C-39 — 3-PIECE
SUGAR AND CREAM SET



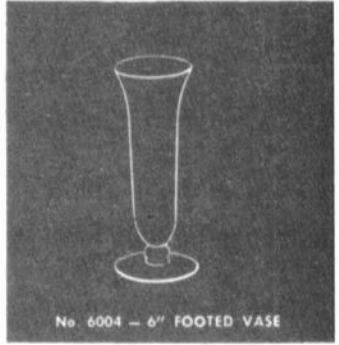
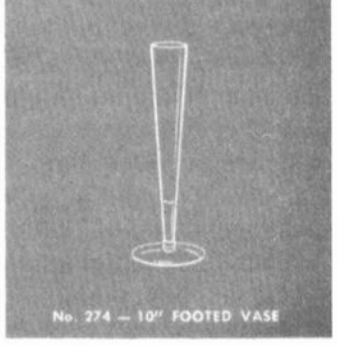
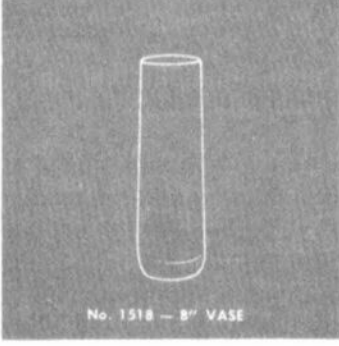
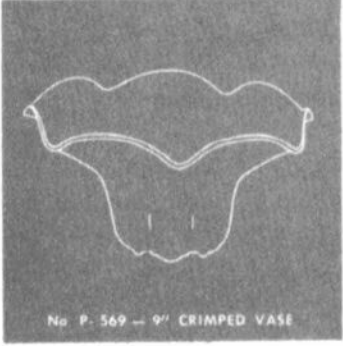
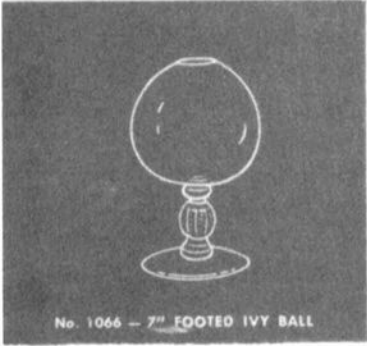
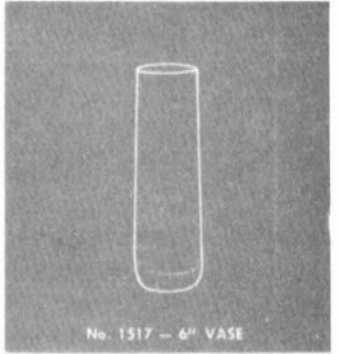
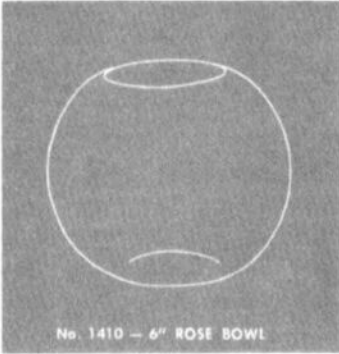
No. P-254 — SUGAR AND CREAM



No. 3900/41
SUGAR AND CREAM



THE CAMBRIDGE GLASS COMPANY, CAMBRIDGE, OHIO, U. S. A.



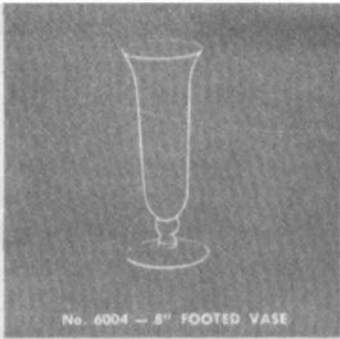
Vases



THE CAMBRIDGE GLASS COMPANY, CAMBRIDGE, OHIO, U. S. A.



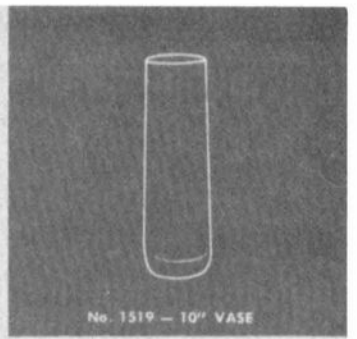
No. 1238 - 12" FOOTED VASE



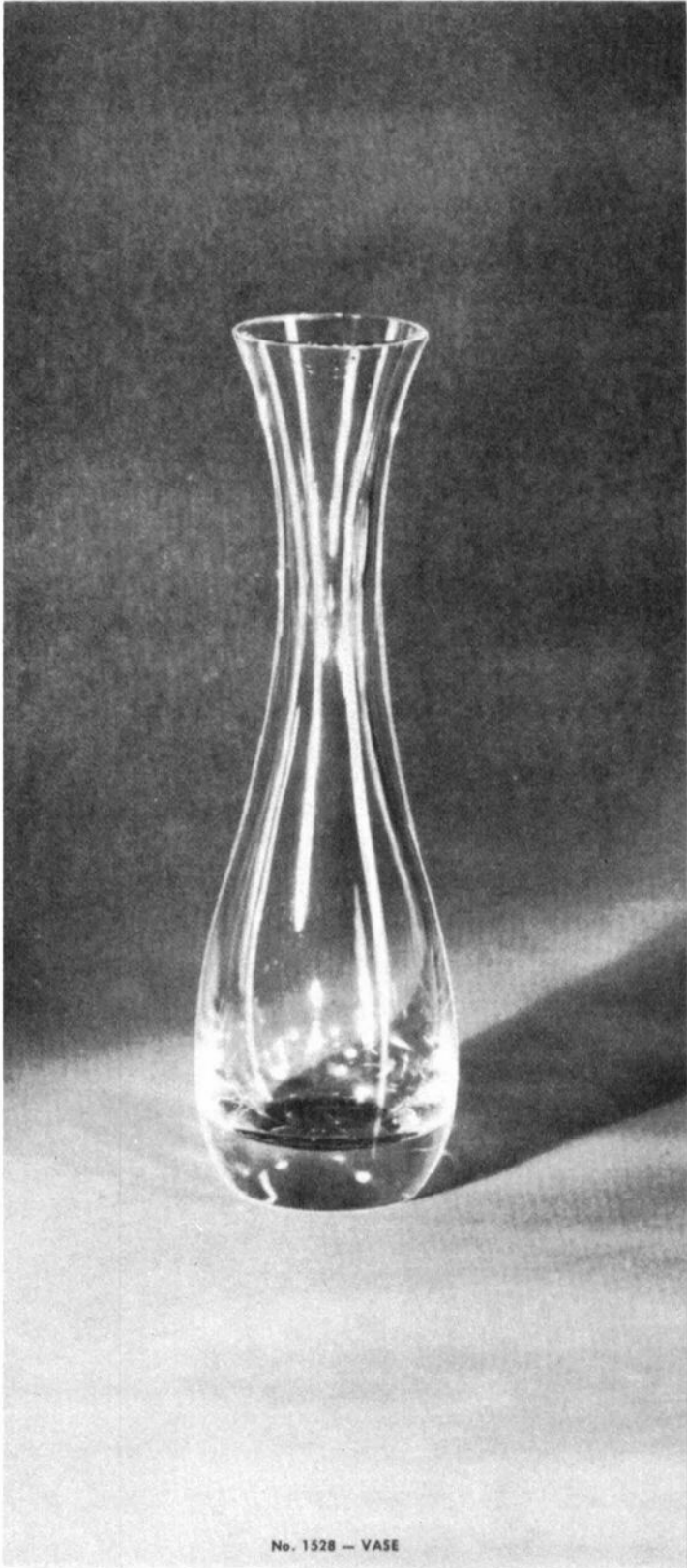
No. 6004 - 8" FOOTED VASE



No. P-568
CRIMPED OBLONG VASE



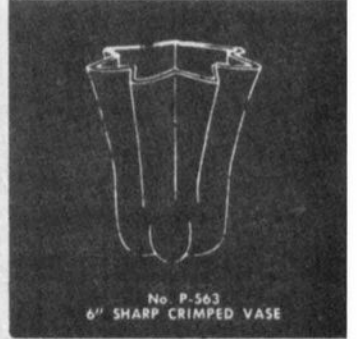
No. 1519 - 10" VASE



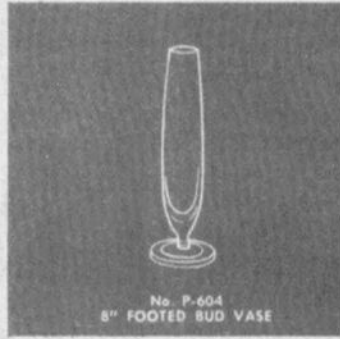
No. 1528 - VASE



No. 3797/77
7 1/2" FOOTED VASE



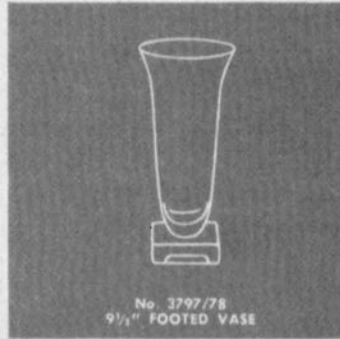
No. P-563
6" SHARP CRIMPED VASE



No. P-604
8" FOOTED BUD VASE



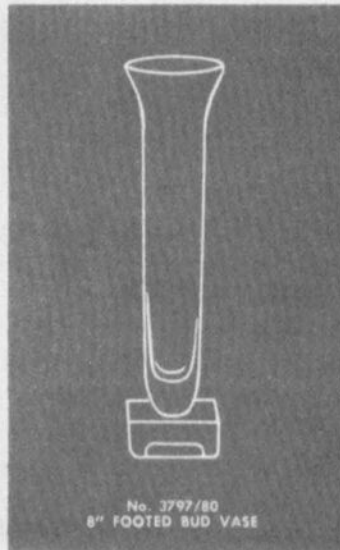
No. P-565 - CRIMPED VASE



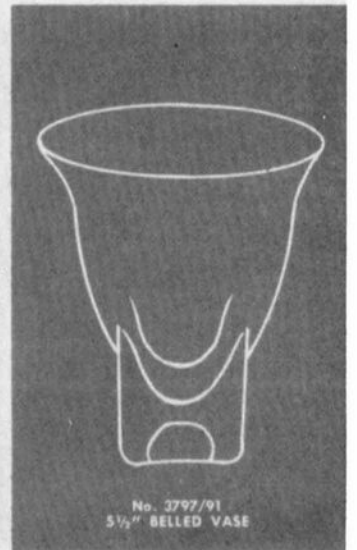
No. 3797/78
9 1/2" FOOTED VASE



No. 3797 79
11" FOOTED VASE



No. 3797/80
8" FOOTED BUD VASE



No. 3797/91
5 1/2" BELLED VASE



THE CAMBRIDGE GLASS COMPANY, CAMBRIDGE, OHIO, U. S. A.

1980 AUCTION RESULTS

1. 17.50	64. 62.50	123. 17.50	183. 24.00	243. 25.00
2. 15.00	64A 20.00	124.100.00	184. 20.00	245. 25.00
3. 95.00	65.110.00	125. 30.00	184A 20.00	246. 17.50
4. 52.00	66. 50.00	125A 70.00	185. 27.50	246A 9.00
5. 14.00	67. 95.00	125B 60.00	186. 16.00	247. 30.00
6. 8.00	68. 15.00	126. 20.00	187. 40.00	248. 2.00
7. 35.00	69. 10.00	127. 15.00	188. 56.00	249. 10.00
8. 45.00	70. 10.00	128. 32.50	189. 35.00	250. 25.00
9. 15.00	71. 9.00	129.105.00	190. 20.00	251. 12.50
10. 7.50	71A 15.00	130. 20.00	191. 20.00	252. 60.00
11. 15.00	72. 90.00	131. 3.00	192. 45.00	253. 45.00
12. 35.00	73. 50.00	132. 12.00	192A 35.00	254. 32.50
13. 55.00	74. 24.00	133. 40.00	193. 8.00	255. 3.00
14. 65.00	75.100.00	134. 10.00	194. 39.00	256. 2.00
15. 15.00	76. 36.00	135. 6.00	195. 50.00	257. 18.00
16. 15.00	77. 25.00	136. 17.50	196. 11.00	258. 30.00
17. 40.00	78. 20.00	137. 2.00	197. 8.00	259. 8.00
18. 15.00	79. 55.00	138. 32.00	198. 35.00	260. 11.00
19. 8.00	80. 30.00	139. 35.00	199. 17.00	261. 18.00
20. 5.00	81. 25.00	140. 32.50	200. 1.00	262. 20.00
21. 12.50	82. 45.00	141. 24.00	201. 10.00	263. 1.00
22. 11.00	83. 50.00	142. 12.50	202. 13.00	264. 5.00
23. 11.00	84.115.00	142A 25.00	203.105.00	265. 5.00
24. 9.00	85. 40.00	143. 7.50	204. 19.00	266. 5.00
25. 20.00	86. 5.00	144. 35.00	205. 6.00	266A 15.00
26.115.00	87. 10.00	145. 80.00	206. 7.00	267. 11.00
27. 7.00	87A 35.00	146. 95.00	207. 32.50	268. 15.00
28. 32.00	87B 57.00	147. 22.00	208. 5.00	269. 7.50
29. 11.00	88. 27.50	148. -----	209.105.00	270. 17.50
30. 40.00	89. 2.00	149. 15.00	210. 00.00	271. 12.50
31. 55.00	90. 17.50	150. 25.00	211. 50.00	272. 5.00
32. 17.00	91. 52.50	150A 15.00	212.150.00	273. 45.00
33. 50.00	92. 7.50	151. 10.00	213. 50.00	274.250.00
34. 45.00	93. 20.00	152. 25.00	214. 22.50	275.150.00
35. 25.00	94. 30.00	153. 10.00	215. 7.00	276. 30.00
36. 22.50	95. 75.00	154. 13.00	216. 50.00	277. 55.00
37. 24.00	96. 65.00	155. 7.00	217.125.00	278. 10.00
38. 25.00	97. 5.00	156. 7.00	218. 30.00	279. 90.00
39. 5.00	98. 45.00	157. 5.00	219. 35.00	280.105.00
40. 10.00	99. 25.00	158. 20.00	220. 20.00	281. 17.00
41. 45.00	100. 30.00	159. 8.00	221. 22.50	282. 30.00
42. 7.50	101. 20.00	160. 17.50	222. 30.00	283. 40.00
43. 7.00	102. 11.00	161.290.00	223. 50.00	284. 40.00
44. 35.00	103. 30.00	162. 5.00	224. 25.00	285. 45.00
45. 9.00	104. 45.00	163. 12.50	225. 7.50	286. 60.00
46. 10.00	105. 24.00	163A 35.00	226. 30.00	287. 45.00
47. 9.00	106. 95.00	164. 40.00	227. 15.00	288. 32.50
48. 17.50	106A 15.00	165. 40.00	228. 17.50	289. 90.00
49. 17.50	107. 11.00	166. 11.00	229. 7.50	290.310.00
50. 9.00	108. 18.00	167. 34.00	230. 65.00	291. 80.00
51. 9.00	109. 11.00	168. 15.00	230A 60.00	292. 6.00
52. 14.00	110. 36.00	169. 70.00	230B 25.00	293. 40.00
53. 37.50	111. 13.00	170. 7.00	231. 40.00	294. 4.00
54. 35.00	112.120.00	171. 10.00	232. 90.00	295. 20.00
55. 22.50	112A 16.00	172. 10.00	233. 30.00	296. 7.50
56. 30.00	113. 9.00	173. 45.00	234. 32.00	297. 7.00
57. 30.00	114. 19.00	174. 70.00	235. 26.00	298. 4.00
58. 22.00	115.100.00	175. 40.00	236. 27.50	299. 22.50
59. -----	116. 4.00	176. 30.00	237. 17.50	300. 14.00
60. 30.00	117. 5.00	177. 25.00	238. 22.50	301.130.00
60A 20.00	118. 15.00	178. 75.00	239. 85.00	302. 80.00
60B 35.00	119. 9.00	179. 9.00	240. 25.00	
61. 7.00	120.100.00	180. 16.00	241. 5.00	
62. 22.50	121.100.00	181. 25.00	242.235.00	
63. 24.00	122. 75.00	182. 40.00		

AUCTION RESULTS

continued from page 11

Changes in Auction Catalog:

- 26. Inside bruise in the making
- 33. 2 instead of 1
- 39. Inside rim chip
- 41. 2 instead of 1
- 44. 2 instead of 1
- 53. 1 tiny rim nick
- 59. Not Cambridge
- 67. 1 foot chip
- 69. 3 instead of 1
- 76. 4 instead of 1
- 83. 1 instead of a pair
- 92. Cracked
- 137. Berry bowl instead of sherbet
- 138. 4 instead of 6
- 145. 2 instead of 1
- 146. 1 tumbler chipped
- 148. Not Cambridge
- 155. Amber instead of Forest Green
- 170. Base nicks
- 244. Not sold
- 250. 2 sets instead of 1
- 255. Peachblo, cracked handle
- 272. Chips
- 289. 6 instead of 3 (2 chipped)
- 297. 2 instead of 1
- 298. Ice cream dish instead of butter

Additions to Auction Catalog:

- 60A Ebony 3400/4-12" 4 ftd. bowl
- 60B Ebony 7" plainware candlesticks
- 64A Willow Blue Decagon 12" Cleo bowl
- 71A Moonstone Everglades rosebowl
- 87A Amethyst 12" ring stem vase
- 87B Amethyst Farber cocktails (6)
- 106A Crown Tuscan 3400/4 bowl, chip
- 112A Peachblo 9 oz. Georgian (1 bruise)(2)
- 125A Heliotrope Community nuff jar
- 125B Heliotrope Community pin tray, signed
- 142A Round cheese preserver, roughness
- 150A N.C.C. 1979 souvenir paperweight
- 163A Amber Decagon 12" comport, etch WI, p.88
- 184A Chantilly salt/venner, Sterling
lids & bases
- 192A Diane 3000-14" torte plate
- 230A Caprice double arm, 4 vase emergne
- 230B Caprice oval 12" 4 ftd. crimped bowl
- 246A Ebony 4" clover tray, signed
- 266A Emerald (light) Decagon sugar,
creamer & tray, edge nicks
- 301. Royal Blue pressed Rosepoint cocktail
- 302. Carmen pressed Rosepoint ftd. tumbler

Club News - continued from page 2

MUSEUM: President Smith reported in the absence of Chairman Arnold Lynd. NCC is negotiating for a piece of property East of I-77 on Rt. 40. It consists of 1.95 acres, is adequate for NCC needs, but is only an investment until appraisal of building, building codes, etc. are made. We will proceed according to the wishes of the majority of the membership.

AUCTION: No report.

SHOW: President Smith reported the show contracts have been mailed and one has been returned.

OLD BUSINESS

None

NEW BUSINESS

As the spokesman for the Nominating Committee was not present at this time the meeting was turned over to the speaker. Charles Upton reported on the history of the property where the Cambridge Glass Co. was and is located from 1801 through 1980.

Sue Rankin reported the Nominating Committee had met on December 9 at the home of Chairman Robert Coyle. Nominated were Don Armbricht, Avon Lake, Ohio; George Hoffman, Newark, Ohio; and Joe Andrejcek, Lakewood, Ohio. Board Members whose terms end in 1980 are, Don Armbricht, George Hoffman and Jack Rettig.

President Smith asked for any nominations from the floor.

Lynn Welker nominated Jack Rettig.

Lynn Welker suggested that since the nominating committee had not contacted Jack Rettig, for the membership not to approve their proposal.

After a lengthy discussion Mr. Rettig was contacted and stated that since he was not approved by the nominating committee he wished to withdraw from the floor nomination.

Larry Hughes nominated Bill Turner from Zanesville, Ohio.

A motion was made by Ed Trindle to close the nominations. Motion carried.

President Smith reported Marilyn Estock, whose father and mother were employees of the Cambridge Glass Co., had donated a Union Transfer Certificate dated 1936 to the Museum.

Lynn Welker did the "Show and Tell" program and then announced the glass additions to the Auction catalog. He then thanked Jo Barstow, Jan Hughes and Bill Harbaugh for their assistance on the Auction.

Willard Kolb auctioned off a #1066 stem amber ivy ball to benefit the Museum Fund. Norma Kilinger was high bidder at \$19.00.

Ruby Landman won the door prize and donated it back to the club.

A motion was made by Steve Horner to adjourn at 10:15 PM.

Janice Y. Hughes
Secretary

STUDY Club News

STUDY GROUP #2 - EASTERN OHIO "THE CAMBRIDGE SQUARES"

The Cambridge Squares Study Group met at the home of Jo and Gerald Barstow on March 1. Eight members were present, including Bill and Meg Turner, new members from Zanesville, Ohio.

The Auction was discussed and purchases made, including a 12 oz. Heatherbloom Georgian tumbler, Avocado sugar and creamer, Violet pin tray, Royal Blue Pressed Rosepoint stem and Carmen vase.

The Squares wish to thank everyone that helped raise money to purchase stems for the Museum at the Auction.

The next meeting will be in April.

Submitted by Janice Hughes
Secretary

STUDY GROUP #3 - SOUTHERN FLORIDA "THE FLORIDA EVERGLADES"

The Florida Everglades Study Group held their meeting on February 19th, in the home of Richard and Luene Brandt.

Luene reported that the new CRYSTAL BALL Index has been well received and is very helpful. A supplement for 1979 is being planned.

Two of our original members, Jim and Carmen Rea, have moved to El Paso, Texas. Our Study Group members will miss them.

Our program was on the "Everglades" patterns. The three different styles were displayed: Leaf; Pictures; and Flowers. The display included a 16" light emerald green bowl with the Buffalo and Indians Hunt Scene, and a 14" mandarin gold flat bowl with the Swan, Stork and Reeds pattern.

Our March meeting will be held at the home of Paula Marks.

Submitted by Evelyn Knowles

STUDY GROUP #6 - NEW YORK STATE "THE FINGERLAKES"

The Fingerlakes Study Group met at 2 PM on February 24th, at the York Inn, Phelps, N.Y. Our original meeting place had to be changed at the last moment, and due to the fast footwork of Bob Ellis, a great substitute was found. The group enjoyed a delicious dinner, and due to the graciousness of the owners of the York Inn, we had the use of a private room for our program.

We were delighted with the rental of the Cambridge Candlestick slides. Bob Ellis moderated the presentation with all

members contributing. Each member brought candlesticks to show. Of the 70 slides presented, we were fortunate to have 31 candlesticks to exam and discuss. The slides cost \$12.60 for rental and postage and would be recommended as a "must" for all our Study Clubs.

The Club held a business meeting prior to the presentation to discuss forthcoming meetings. Marcia Ellis will manage our "large" treasury.

Next meeting will be April 13th at 2 PM at the home of Lila and Bob Noble, Victor, N.Y. Program will be History of Glass Making and Methods of Etching.

Submitted by Shirley S. Ladouceur

STUDY GROUP #7 - EASTERN OHIO "THE CAMBRIDGE BUFFS"

The Cambridge Buffs Study Group held their meeting March 15th, in the home of Charles and Mary Alice Upton, Cambridge, Ohio. There were 14 members and 3 guests present.

Charlie Upton presented a program on the use of Black Light. Testing with black light can produce valuable information on the dating of glassware, but we must keep in mind that this method should not be used as a means of identification. Some things that will change the reaction of the glass include: the amount of other light in the room, the thickness of the piece of glass; the era the glass was made; and the position of the glass in relation to the black light.

"Show & Tell" items on display included: a 9 oz. #3122 Royal Blue goblet; a Nearcut "Feather" pitcher; an Ivory berry bowl; and 8½" dark Amber Draped Lady; a Heatherbloom Mt. Vernon Compote; and a crystal juicer.

Our next meeting will be April 9th, in the home of Peg and Dale Gotschall.

Submitted by Karen S. Jones

STUDY GROUP #8 - SOUTHERN MICHIGAN "THE MICHIGAN CAPRICES"

The Michigan Caprices met March 2nd, at the home of Robert and Betty Dasen, Flushing, Michigan. Mr. Frank Kawa, a Cambridge factory worker (1930-34); his wife, Luella; and daughter and son-in-law, Karen and Jack Abbe were guests.

Mr. Kawa told of his work at Cambridge and brought many items to share with us. His sisters worked in the Etching department, and he had sisters-in-law who worked there also. We all learned so much from Mr. Kawa.

New member, Donna Lick and her husband, Ed, arrived during the meeting, direct from the Auction in Cambridge, Ohio. They brought with them a beautiful Azurite 8" Compote with black enameled, etched peacocks, they had purchased at the Auction.

The next meeting will be April 20th at the home of Ray and Clara Brown in Burton, Michigan. New members are welcome. Call Clara at 313-742-0974.

Submitted by Betty Dasen
Secretary

A. SPRINGBORN

609 Sabal Palm Circle
 Altamont Springs, FL 32701
 Phone: 305-339-1428

#3011/13 Nude Stem Brandles

Gold	\$ 65.00
Green	65.00
Carmen	75.00
Amethyst	65.00

#3011/12 Nude Stem Wines

Green	55.00
Amethyst	55.00
Blue	65.00
Carmen	65.00

#3011/7 Nude Stem Clarets

Blue	75.00
Crystal (been ground)	35.00

#3011/2 Nude Stem Table Goblets

Blue	75.00
Carmen	75.00

Rosepoint

Decagon Ice Bucket	75.00
#3900/17 Cups & Saucers (set)	28.00
#3121 stemmed 1 oz. Cordials	50.00

ALL ITEMS POSTPAID

WANTED

Varsity Sport Novelty Items.

Mt. Vernon: ftd. Tumblers, Decanters, flat Tumblers, and Steins. Any color and size.

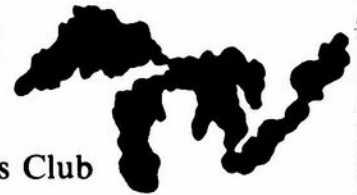
Ringstem 3-lite Candlestick w/Decagon base. Perforated Flower block and base for bowl in Ebony.

Light Emerald Green Lemonade Mug w/gold en-crustured trim.

STEVE HORNER

3604 Chelsea Dr.
 Brunswick, OH 44212

6th Annual Great Lakes



Depression Glass Club

Show and Sale

May 3, 10-6

May 4, 11-4

Glass and Pottery
 Glass Identification
 Table Displays

Oakland University
 I-75 to University Drive Exit
 Rochester, Michigan

Donation \$1.00

HILLIARD ANTIQUE SHOW AND FLEA MARKET

Franklin County Fairgrounds, Hilliard, Ohio

2 MILES W. OF I-270 OUTER BELT

4 MILES N.W. OF COLUMBUS

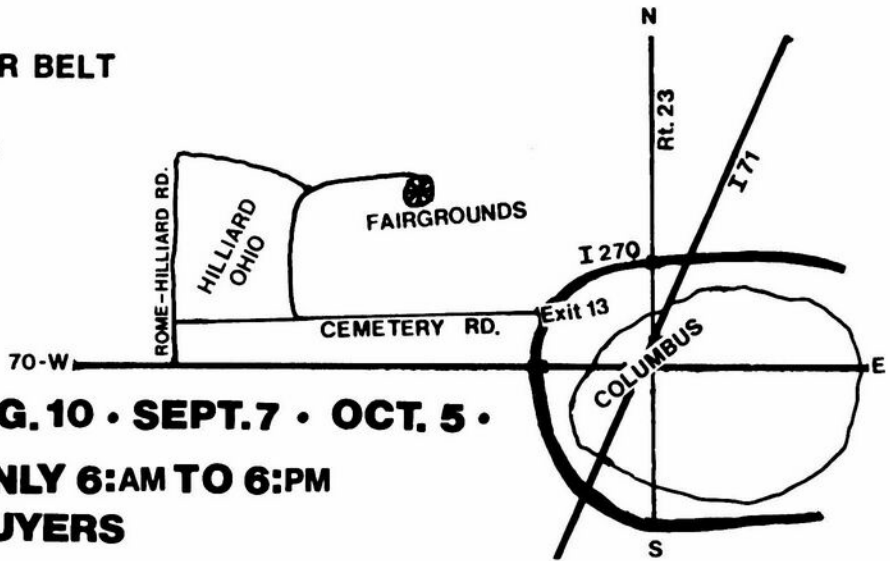
FOLLOW SIGNS!!

DATES:

• MAY 11 • JUNE 1 • AUG. 10 • SEPT. 7 • OCT. 5 •

SUNDAY SHOWS ONLY 6:AM TO 6:PM

FOR DEALERS & BUYERS



INSIDE SPACE, RESERVE IN ADVANCE - BLDG. A & B

OUTSIDE SPACE, NO RESERVATION NEEDED

BLDG. A - CEMENT FLOOR, REST ROOMS, CONCESSION STAND

(Limited Space) 23 BOOTHS (13'X 8') AVAILABLE \$17.00 ea. RENT 2½'X 8' TABLES at \$3.00 ea.

BLDG. B - DIRT FLOOR, REST ROOMS, DRIVE IN FOR UNLOADING

100 BOOTHS (10'X 20') AVAILABLE at \$15.00 ea. BRING YOUR OWN TABLES!

OUTSIDE SET-UP - (10'X 20') SPACE \$8.00 ea. NO RESERVATION NEEDED!

*ADVERTISED IN LOCAL AND NATIONAL ANTIQUE PAPERS

*FREE ADMISSION - .75 PARKING FEE

*OVERNIGHT CAMPING \$5.00 INC. WATER & ELECTRIC

*CHECK IN AFTER 6:PM SAT. NIGHT

*NO SET-UP BEFORE 6:AM SUNDAY MORNING

*FOOD AVAILABLE AT CONCESSION IN (A) BUILDING

*PLEASE, NO JUNK! OR GARAGE SALE ITEMS!

FOR INFORMATION AND RESERVATIONS CALL OR WRITE TO
STOCKWELL PROMOTIONS 4214 North High Street Columbus, Ohio 43214

Monday thru Friday 8 to 5 Phone (614) 267-8163 - Sat. & Sun. & Eve. 263-6830 • 267-0577

PAUL F. CARLTON

4800 Prestwick Drive Fairfax, Virginia 22030
 Phone: 703-273-8507

Royal Blue Tally-Ho

6" Bread & Butter Plates (1402/21) ea. \$ 10.00
 8" Salad Plates (1402/23) ea. 12.00
 Cups and Saucers (1402/19) set 20.00

16" Dianthus Pink (Satin Finish) Everglades

"Buffalo Hunt" Bowl 80.00

1-oz. Brandy, Nude Stem, Evergreen Bowl 65.00

4½-oz. Nude Stem Cocktails

(Evergreen, Forest Green, Mandarin Gold, Amber) ea. 50.00

12-oz. Rubina Ranch Tumblers (Gyro Optic) ea. 75.00

— Classified —

BUYING DEPRESSION GLASS. Cambridge, Heisey, Fostoria, Akro-Agate, glass figurals and unusual glass "cuties". Nadine Pankow, 207 S. Oakwood, Willow Springs, IL 60480. Phone: 312-839-5231.

WANTED: GREEN DECAGON large dinner plates, plain, 11" or larger. Contact: Mrs. C. O. Payne, 5314 E. Kaley St., Orlando, FL 32806.

WANTED: NEARCUT: 10" lamp shade in Wheat Sheaf pattern. Also base for Daisy punch bowl. Bill & Phyllis Smith, 4003 Old Columbus Rd., Springfield, OH 45502. Phone: 513-323-3888.



**OBTAINED A
 NEW MEMBER?**

contest will end May 15, 1980

VOTE FOR BILL TURNER for Board of Directors

*Qualified
 Collector
 Willing to work
 Interested in future of NCC, Inc.*

Paid for by Committee to elect Bill Turner

Jo and Gerald Barstow
 Janice & Larry Hughes
 Lynn Welker
 Frank and Vicki Wollenhaupt
 Joy McFadden
 Charles & Marybelle Moorehead
 Charles & Mary Alice Upton

DEALERS



DIRECTORY

NOTE: When writing to the Dealers listed here, please enclose a SASE!

<p><i>YOU CAN ADVERTISE YOUR ANTIQUE SHOP HERE!</i></p> <p>1 inch - \$6 for six months</p>	<p>BENICIA ANTIQUE SHOP 305 First Street Benicia, California 94510</p> <p>OPEN 11 AM - 5 PM Closed Monday</p> <p>Z. E. LOPES 707-745-0978</p>	<p>CHARLES MIKULIK Box 416 Elizabeth, N.J. 07207</p> <p>— COLLECTOR —</p> <p>Always paying good prices for CAMBRIDGE CAPRICE in all colors 201-372-1101</p> <p>CARRY MOST TYPES OF ANTIQUES</p>
<p>EVELYN M. ALLEN 135 Cynthia Street Heath, Ohio 43055</p> <p>Mail Order & Shows 614-522-1635 SPECIALIZING IN CAMBRIDGE GLASS!</p>	<p>VISIT HISTORIC BENICIA and its 28 shops</p> <p>Off Interstate #80 North of San Francisco</p>	
<p>BLACK ROOSTER ANTIQUES 1018 Clark Street Cambridge, Ohio 43725</p> <p>614-432-3202 M. Sipe CAMBRIDGE GLASS - GENERAL LINE</p>	<p>CHURCH STREET ANTIQUES 6 Church Street Boston, Massachusetts 02116</p> <p>George or Frank 617-426-1048 CAMBRIDGE, HEISEY, GENERAL LINE</p>	<p>COYLE & SCHUSTER ANTIQUES Box 982 - Ph. 614-349-7362 Newark, Ohio 43055</p> <p>Shows & Mail Order BUY & SELL - CAMBRIDGE - HEISEY</p>
<p>D & D ANTIQUES 184 East Kossuth Street (GERMAN VILLAGE) Columbus, Ohio 43206</p> <p>DICK SLIFKO 614-443-6020</p>	<p>D'MARIE'S ANTIQUES US Rt. 1 - just South of Rt. 606 Thornburg, Virginia 22565</p> <p>703-582-6220 Jim Rankin OPEN EVERY DAY 10 AM to 6 PM</p>	<p>FINDER'S KEEPER'S ANTIQUES P.O. Box 303 P.O. Box 16023 Dayton, O. Columbus, O. 45401 43216 513-254-2937 614-885-2726</p> <p>SPECIALIZING IN CAMBRIDGE GLASS!</p>
<p>THE GLASS CUPBOARD 39 Shire Oaks Drive Pittsford, New York 14534</p> <p>Marcia Ellis 716-586-7596 CAMBRIDGE ONLY SASE FOR LIST</p>	<p>THREE FRIENDS ANTIQUES CO. 3930 Broadview Rd. Richfield, OH 44286</p> <p>Hours: Tues.-Sat. 10-4, Sun. 12-5 Phone 216-659-3930 WE BUY & SELL CAMBRIDGE!</p>	<p>'OUR GLASS ANTIQUES Box 27, Wills Point, Texas 75169</p> <p>20th CENTURY COLLECTIBLES featuring CAMBRIDGE GLASS! Shows - No Lists - SASE Please PAUL & GINNY HENDERSON 214-563-6971</p>
<p>COLLECTORS II 414 S. Washington Olympia, WA 98501</p> <p>Ruby Gilmer & Pauline Christensen 206-754-7808</p> <p>GLASSWARE — POTTERY — COLLECTIBLES</p>	<p>GEORGE HOFFMAN ANTIQUES 129 South 4th Street Newark, Ohio 43055</p> <p>614-345-8021</p>	<p>1886 HOUSE East Schodack, N.Y. 12063</p> <p>MAIL and SHOWS Laurie Cruise 518-477-5895 CAMBRIDGE - NORITAKE - AZALEA - D.G.</p>
<p>LASHER ASSOCIATES 119 Water St. Gaithersburg, Md. 20760</p> <p>Faith Lasher 301-977-8296 SPECIALIZING IN GLASSWARE</p>	<p>ROLLING ACRES ANTIQUES 66484 N. 8th Street Road Cambridge, Ohio 43725</p> <p>Sandy Jenkins & Anne Ingram 614-432-2570 CAMBRIDGE & GENERAL LINE ANTIQUES</p>	<p>THE MOUSE HOUSE ANTIQUES Route 22 East Cambridge, Ohio 43725</p> <p>Shirlee Bistor 614-432-3132 SPECIALIZING IN GLASSWARE!</p>
<p>WICKFORD ANTIQUE ARCADE 650 Ten Rod Road North Kingstown, RI 02852</p> <p>The Clausons 401-295-7520 SPECIALIZING IN GLASSWARE</p>	<p>M & M ANTIQUES & COLLECTIBLES 310 N. Main - Box 417 Canton, Kansas 67428</p> <p>The Martin's 316-628-4705 SPECIALIZING IN CAMBRIDGE GLASS!</p>	<p>AL STEELE Westerville, Ohio 614-882-6483 or 614-882-7124</p> <p>Mail Orders and Shows Only HEISEY — CAMBRIDGE — PATTERN GLASS</p>
<p>BILL & SHARON PHILLIPS 21730 Priday Euclid, Ohio 44123</p> <p>Ph. 216-261-4665 Shows Only BUYING GLASS, ANTIQUES, ETC.</p>	<p>THIS 'N' THAT PLACE 101 South Street Chagrin Falls, Ohio 44022</p> <p>Lue Koerper 216-247-4938 OPEN THURS. - SAT. 10 AM - 5 PM</p>	<p>SWISS HILLS COLLECTIBLES Mary & Wilbur Henderson 303 Guilford Avenue Woodsfield, Ohio 43793</p> <p>Mail & Shows 614-472-1133 SPECIALIZING IN CAMBRIDGE GLASS!</p>

The GLASS REVIEW magazine invites you to attend a

at Glass Review SHOW

WHEATON VILLAGE
10th and "G" Streets
MILLVILLE - NEW JERSEY

GLASS MUSEUM - PAPERWEIGHT MAKING DEMONSTRATIONS - GLASS FACTORY
* RELIVE HISTORY IN AN 1888 GLASSTOWN *

APRIL 12-13 • 10 a.m. - 5 p.m.

SEMINARS - DISPLAYS - I.D. CLINIC - GUEST AUTHORS

Seminars will be held in the Crafts Arcade Schoolroom:

SATURDAY - APRIL 12

11:30 a.m. - "The Great Revival of Pairpoint Glass" - Mr. Leonard Padgett
author of PAIRPOINT GLASS and
PAIRPOINT GLASS CUP PLATES - THE FIRST FIFTY

1 p.m. - "Cambridge Glass - The Company and the Product: 1902-1960"
Mr. William Smith
President of the National Cambridge Collector's, Inc.

3 p.m. - "Survey of American Pattern Glass" - Harriet Roberts
Trustee of National Early American Glass Club; Founder and
first President of the Westchester Glass Club, New York

SUNDAY - APRIL 13

1 p.m. - "Post 1950 Collectible Glass With An Investment Future"
Roserita Ziegler
Feature Writer for GLASS REVIEW Magazine

3 p.m. - "South Jersey Whinseys, Paperweights & Collectibles"
Mr. Donald Pettifer
Director of Interpretation and Collections, Wheaton Village

GLASS I.D. CLINIC DAILY * Limit 2 items - No appraisals
Conducted by the Glass Review staff and South Jersey Chapter of NEAGC

VILLAGE ADMISSION - \$3.50

(includes show and sale and all daily activities)

* BANQUET SPEAKERS/APRIL 12 - MILLVILLE INN

* Gwen ShumPERT - Feature Editor of "Glass Review"

"The Lure of Glass Collecting"

* Albert Christian Revi - Editor of "Spinning Wheel"

"The Tiffany Glass Collection at the Chrysler Museum"

ADVANCE RESERVATIONS - \$15 each

For color brochure/show contract/Banquet Reservations call (714) 642-7636 or write:
GLASS REVIEW, P.O. Box 2315, Costa Mesa, CA 92626.

1980 CONVENTION

and

ANTIQUÉ SHOW & SALE

JUNE 27, 28, 29, 1980



Shenandoah Inn

P.O. Box 147, Old Washington, Ohio 43768
Phone - 614-489-5511

(Interstate 70 - Exit 186 - 7 miles East of Cambridge, Ohio)

AUCTION RESULTS

INSIDE!

HAPPY EASTER!

National Cambridge Collectors, Inc.
P.O. Box #416
Cambridge, Ohio 43725

FIRST CLASS MAIL

FIRST-CLASS MAIL
U.S. POSTAGE
PAID
So. Vienna, Ohio
45369
Permit No. 15