

Cambridge



Crystal Ball

ISSUE NO. 82

FEBRUARY 1980

Published monthly by the NATIONAL CAMBRIDGE COLLECTORS, Inc.
To encourage and to report the discovery of the elegant and boundless product
of the Cambridge Glass Company, Cambridge, Ohio

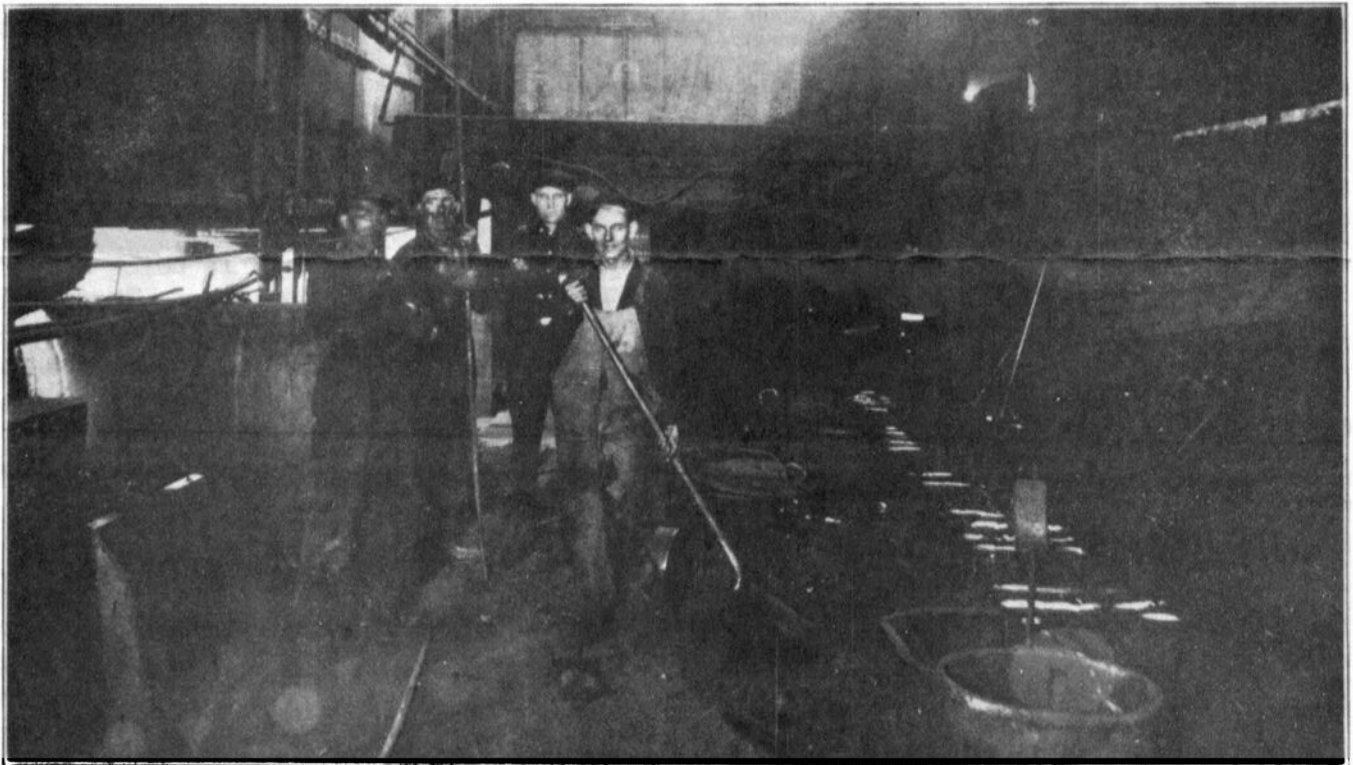


Photo circa 1924

The Cambridge Glass Co., Cambridge, Ohio

GAS MAKING DEPARTMENT

We operate our own Coal Mines and this department consumes 50 tons per day
in producing raw gas for melting furnaces.

MEMBERSHIP RENEWAL NOTICE

If the date on your address label is - - **2 - 80**
This is your **LAST ISSUE** of the
CRYSTAL BALL. Please renew **NOW!**

Be sure to attend the
All Cambridge Glass Auction!
March 1, 1980 — 11 a.m.
Shenandoah Inn
Old Washington, Ohio

CAMBRIDGE CRYSTAL BALL

Official publication of National Cambridge Collectors, Inc., a non-profit corporation with tax exempt status. Published once a month for the benefit of its members. Back issues of the CRYSTAL BALL are available to members only, at a cost of 60¢ each or 12 issues for \$7.

Membership is available for individual members at \$10 per year and additional members (12 years of age and residing in the same household) at \$3 ea. All members have voting rights, but only one CRYSTAL BALL will be mailed per household.

1979-80 OFFICERS & COMMITTEE CHAIRPERSONS

PRESIDENT William C. Smith
 VICE-PRESIDENT Lynn Welker
 SECRETARY Janice Y. Hughes
 TREASURER Ruby Landman
 SERGEANT-AT-ARMS George W. Hoffman
 BUDGET & FINANCE William C. Smith
 BY-LAWS David B. Rankin
 CONVENTION Lynn Welker
 MEMBERSHIP Josephine A. Barstow
 MUSEUM Arnold Lynd
 PROGRAM & ENTERTAINMENT Frank Wollenhaupt
 PROJECT Willard Kolb
 PUBLICITY Don E. Armbrrecht
 STUDY GROUP ADVISORY John F. Rettig

1980 ALL-CAMBRIDGE AUCTION Lynn Welker
 1980 ANTIQUE SHOW

CRYSTAL BALL EDITOR Phyllis D. Smith

CLASSIFIED ADVERTISING RATES

5¢ per word \$1.00 minimum
 We cannot mix type size in classified advertisements. Abbreviations and initials will count as words. Payment in full MUST accompany all ads.

DISPLAY ADVERTISING RATES

	Members	Non-Members
1/8 page	\$ 4.00	\$ 6.00
1/4 page	7.00	10.00
1/2 page	12.00	18.00
3/4 page	17.00	25.00
Full page	22.00	33.00

DEALERS DIRECTORY

1" ad \$6.00 for 6 months

Cambridge CRYSTAL BALL assumes no responsibility for items advertised and will not be responsible for error in price, description or other information.

Advertising copy must be in our hands by the 15th of each month to assure publication in our next issue. Advertisements containing reproductions will not knowingly be accepted unless clearly stated.

PLEASE ADDRESS ALL CORRESPONDENCE TO

CAMBRIDGE CRYSTAL BALL
 National Cambridge Collectors, Inc.
 P.O. Box #416
 Cambridge, Ohio 43725

PLEASE NOTIFY US IMMEDIATELY OF ANY CHANGE
 IN YOUR ADDRESS!

Please enclose a self-addressed, stamped envelope
 when requesting information!!

Club News

STUDY GROUP INTEREST

Interest in Study Group membership is continuing to grow. Listed below are members interested in starting a Study Group in their area. If you share this interest, please contact the person nearest you by either phoning or writing them c/o N.C.C., P.O. Box 416, Cambridge, Ohio 43725.

CALIFORNIA Beverley Hanson

CONNECTICUT
 New England or New York area Barbara Hellman

INDIANA
 North Central area .. Kenneth Cook, 219-653-2511

MICHIGAN
 Burton, Flint area Clara K. Brown

NOTE: A new Study Group is being formed in the Flint, Michigan area. They will hold a meeting in February. Anyone interested in joining them, please phone: Clara Brown at (313) 742-0974.

MARYLAND Faith Lasher

OHIO
 Ashland, Galion, Mansfield or Mr. Vernon area .
 D. D. Rummell
 Cleveland area JoAnne Wegman, 216-351-0799
 Mentor area Raymond W. Pyle
 Hide-A-Way Hills area Virginia Dutcher

OREGON Joyce Dawson

PENNSYLVANIA
 Pittsburgh area Phyllis T. Freier

VIRGINIA
 Williamsburg area John Grubb

WASHINGTON
 Seattle area Glenita E. Stearns

WISCONSIN
 Milwaukee area Muriel N. Kroening

"Near-Cut" Patterns

CHELSEA WARE NO. 4070

by Phyllis Smith

Over a period of several months, we have included in the CRYSTAL BALL, pages taken from an old Nearcut Catalog, containing pictures of the Nearcut Chelsea Ware #4070. We have reproduced nine pages thus far, and included with this article is the tenth and final page in this series. It is with deep appreciation that we "Thank" Mr. & Mrs. Tom Mosser of Cambridge, Ohio, for loaning us this Catalog to be used in this manner.

This particular Nearcut Catalog is not dated, and simply states that it is Catalog No. 10. In doing research on Cambridge Glass, we have found the advertisement shown below, in an edition of "China, Glass & Lamps", dated December 6, 1920. Thus we can give an "educated guess" that this Catalog No. 10 was published sometime in early 1921. Also included in this article is a listing from a Price Guide that was issued for this Catalog No. 10. We have no date as to when this Price Guide was issued, but felt the information would be of interest to our members.

The Chelsea pattern could possibly be the last "New" pattern produced by the Cambridge Glass Company during their Nearcut Era (1904-1922). We have no proof at this time as to how long it was in production, but because of it's scarcity on the market today, it could be assumed it was not in production for too long a period.

It has been found mainly in crystal, but pieces in Azurite and Crystal with Ruby Flashing have been reported. It is entirely possible that it was made in Ebony and other opaque colors. If any of you have seen it in other colors, please let us hear from you. Chelsea has also been found cut, with Rock Crystal Engravings.

C
H
I
N
A

G
L
A
S
S

&

L
A
M
P
S

We Extend Greetings
AND
The Best of Wishes for 1921


See our complete display of this new line of
Tableware & Novelties

Also Complete New
Etched and Cut Lines

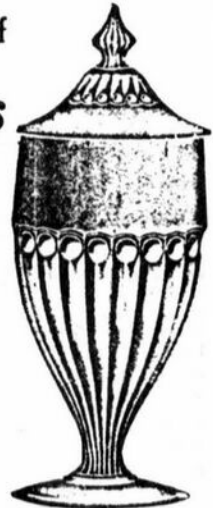
WE WILL EXHIBIT AT HOTEL HENRY,
PITTSBURGH, FROM WEDNESDAY, JAN-
UARY 12, TO SATURDAY, JANUARY 29.

The Cambridge Glass Co. TRADE MARK "Nearcut"
Patented.

Cambridge, Ohio, U. S. A.



Chelsea—No. 147
3 1/4 inch sweetmeat.



Chelsea—No. 144
1/2 lb. Candy Jar.

D
E
C
E
M
B
E
R

6

1
9
2
0

CHelsea WARE NO. 4070

Illustrated Pages 1 to 10 Inclusive in Catalog

Article No.	Description	Price Per Doz. Hbl. Lot	Price Per Hbl. Lot	No. Doz. Pk'd. to Hbl.	Wgt. Per Pk'd.	Article No.	Description	Price Per Doz. Hbl. Lot	Price Per Hbl. Lot	No. Doz. Pk'd. to Hbl.	Wgt. Per Pk'd.
1	1/2 Gallon Barrel Shape Jug	\$14.00	\$13.40	1 1/2	120	94	Ftd. Matinee Sugar and Cover	5.50	6.05	9	140
2	Three-pint Barrel Shape Jug	12.50	13.75	2 1/2	130	95	Ftd. Matinee Open Sugar	3.50	3.85	8	160
3	Quart Barrel Shape Jug	10.00	11.00	3 1/2	165	96	Ftd. Matinee Cream	3.50	3.85	12	160
4	1/2 Gallon Fancy Shape Tankard	14.00	15.40	1 1/2	120	97	Punch Bowl, Belled	32.00	35.20	1/2	90
5	Three-pint Fancy Shape Tankard	12.50	13.75	2	130	98	Ftd. and Hld. Punch Cup, Belled	3.00	3.30	15	130
6	Quart Fancy Shape Tankard	10.00	11.00	4	165	99	Ftd. Lemonade Bowl, Rolled Edge	32.00	35.20	1/2	90
7	1/2 Gallon Paper Tankard	14.50	15.95	1 1/2	150	100	Hdl. Lemonade, Cupped	2.00	2.20	22	140
8	1/2 Gallon Tankard, Bell Top	14.50	15.95	1 1/2	150	101	9 in. Celery Tray	3.50	3.85	12	150
9						102	12 in. Celery Tray	6.80	7.50	5	130
10	1/2 Gallon Ice Tankard	14.50	15.95	1 1/2	130	103	8 oz. Syrup and Cover	6.00	6.60	13	130
11	1/2 Gallon Ice Tankard and Cover	17.00	18.70	1 1/2	130	104	8 oz. Syrup Cover and Plate	9.00	9.90	12	150
12						105	12 oz. Syrup and Cover	7.00	7.70	10	130
13						106	12 oz. Syrup Cover and Plate	10.50	11.85	8	150
TUMBLERS											
14	12 oz. French Bell Ice Tea Tumbler	2.80	3.10	13	130	107	Jam Jar and Cover	4.00	4.40	15	180
15	9 oz. French Bell Table Tumbler	2.20	2.40	19	140	108	Jam Jar Cover and Plate	7.00	7.70	9	150
16	12 oz. Straight Ice Tea Tumbler	2.80	3.10	14	130	109	Hdl. Ftd. Horse Radish and Cover	4.50	4.55	15	150
17	9 oz. Straight Table Tumbler	2.20	2.40	19	140	110	Mustard and Cover	3.00	3.20	40	150
STEMWARE											
18	9 oz. Water Goblet, Cupped	3.30	3.65	9	120	111	4 oz. Tall Vinegar or Oil Ground Stopper	6.00	6.00	24	170
19	9 oz. Water Goblet, Belled	3.30	3.65	9	120	112	6 oz. Tall Vinegar or Oil Ground Stopper	7.00	7.70	10	130
20	7 oz. Tall Ftd. Sherbet, Cupped	2.80	3.10	9	130	113	6 oz. Squat Vinegar or Oil Ground Stopper	7.00	7.70	10	150
21	7 oz. Tall Ftd. Sherbet, Belled	2.60	3.10	9	130	114	10 1/2 in. Ftd. Boquet Holder	8.00	8.80	3	120
22	8 oz. Low Ftd. Sherbet, Cupped	2.60	2.85	20	140	115	6 1/2 in. Blown Corset Vases	6.20	6.80	5	130
23	5 oz. Low Ftd. Sherbet, Belled	2.60	2.85	20	140	116	7 1/2 in. Blown Corset Vases	7.00	8.70	4	120
24	6 oz. Ftd. and Hld. Sherbet, Cupped	3.00	3.30	13	130	117	5 1/2 in. Violet Holder, Plain Top	4.00	4.40	7	120
25	6 oz. Ft. and Hld. Sherbet, Belled	3.00	3.30	13	130	118	6 in. Violet Holder, Plain Top	3.25	3.55	10	130
26	7 oz. Hld. Lemonade, Cupped	1.80	2.00	22	140	119	4 in. Violet Holder, Plain Top	3.00	3.30	15	150
27	7 oz. Hld. Lemonade, Belled	1.80	2.00	25	160	120	5 in. Violet Holder, Crimped Top	4.00	4.40	7	120
SODA FOUNTAIN WARE											
28	12 oz. Flared Soda Tumbler	2.30	2.55	9	140	121	5 1/2 in. Violet Holder, Crimped Top	3.25	3.55	10	130
29	10 oz. Flared Soda Tumbler	2.10	2.30	12	120	122	8 in. Handled Flower Basket	10.00	11.00	2	110
30	8 oz. Flared Soda Tumbler	2.00	2.20	13	160	123	8 in. Handled Flower Basket	15.00	16.50	1	100
31	7 oz. Flared Soda Tumbler	1.90	2.10	17	170	124	12 in. Handled Celery Basket	15.00	16.50	1 1/2	100
32	5 1/2 oz. Flared Soda Tumbler	1.80	2.00	18	170	125	9 in. Handled Celery Basket	10.00	11.00	3 1/2	110
33	12 oz. Protected Edge Tumbler	2.30	2.55	11	150	126	5 1/2 in. Tall, Footed, Handled, Jam Dish and Cover	10.50	11.55	2 1/2	130
34	10 oz. Protected Edge Tumbler	2.10	2.30	14	160	127	5 1/2 in. Low Footed Comport and Cover	8.50	9.25	3	160
35	8 oz. Protected Edge Tumbler	2.00	2.20	15	170	128	5 1/2 in. Three-Footed Candy Box and Cover	8.00	8.50	3 1/2	140
36	7 oz. Protected Edge Tumbler	1.90	2.10	18	180	129	6 1/2 in. Candy Bowl and Cover	7.00	7.25	3 1/2	140
37	5 1/2 oz. Protected Edge Tumbler	1.80	2.00	19	180	130	4 1/2 in. Candy Bowl and Cover	5.00	5.50	8 1/2	160
38	5 oz. Soda Fountain Goblet, Belled	2.50	2.75	20	150	131	4 in. Candy Bowl and Cover	4.25	4.65	6 1/2	170
39	8 oz. Soda Fountain Goblet, Belled	2.80	3.10	10	140	132	1/2 lb. Tall Candy Jar and Cover	5.25	5.75	6 1/2	160
40	10 oz. Soda Fountain Goblet, Belled	3.00	3.30	8	130	133	1/2 lb. Tall Candy Jar and Cover	5.25	5.75	6 1/2	160
41	12 oz. Soda Fountain Goblet, Belled	3.30	3.65	7 1/2	120	134	4 in. Tall Ftd. Sweetmeat and Cover	5.00	5.50	6	160
42	5 oz. Soda Fountain Goblet, Protected Edge	2.50	2.75	20	160	135	3 1/2 in. Low Ftd. Sweetmeat and Cover	4.40	4.85	11	170
43	8 oz. Soda Fountain Goblet, Protected Edge	2.80	3.10	10	160	136	5 1/2 in. Thin Edge Plate	2.30	2.55	28	160
44	10 oz. Soda Fountain Goblet, Protected Edge	3.00	3.30	10	140	137	6 1/2 in. Thin Edge Plate	2.80	3.10	25	160
45	13 oz. Soda Fountain Goblet, Protected Edge	3.30	3.65	8	130	138	7 1/2 in. Thin Edge Plate	3.00	3.30	21	160
46	8 inch Banana Split	4.00	4.40	6	100	139	9 1/2 in. Thin Edge Plate	5.00	5.50	7	160
47	8 1/2 in. Deep Bowl, Straight	6.00	6.60	4 1/2	130	140	11 1/2 in. Thin Edge Plate	7.00	7.70	5	150
48	7 in. Deep Bowl, Straight	4.20	4.60	8	160	141	9 1/2 in. Cheese and Cracker	9.00	9.90	5	140
49	4 1/2 in. Fruit Saucer	2.30	2.55	14	160	142	9 1/2 in. Cracker Plate only	5.50	6.05	6	160
50	4 1/2 in. Fruit Saucer	1.80	2.00	23	160	143	5 1/2 in. Cheese Comport only	3.50	3.85	8	130
51						144					
52	8 1/2 in. Deep Bowl, Belled	6.00	6.60	5	130	145					
53	7 1/2 in. Deep Bowl, Belled	4.20	4.60	6	160	146					
54	5 in. Fruit Saucer, Belled	2.30	2.55	20	160	147					
55						148					
56	4 1/2 in. Fruit Saucer, Belled	1.80	2.00	25	160	149					
57	8 in. Deep Cupped Bowl	6.50	7.15	3	120	150					
58	6 1/2 in. Deep Cupped Bowl	4.60	5.05	4 1/2	130	151					
59	4 1/2 in. Deep Cupped Bowl	2.50	2.75	18	140	152					
60						153					
61	4 1/2 in. Deep Cupped Bowl	2.00	2.20	20	160	154					
62						155					
63	9 1/2 in. Shallow Preserve Nappy	6.50	7.15	4	130	156					
64	8 in. Shallow Preserve Nappy	4.60	5.05	4	140	157					
65	5 1/2 in. Individual Preserve Nappy	2.50	2.75	18	160	158					
66	5 in. Individual Preserve Nappy	2.30	2.55	20	160	159					
67	4 1/2 in. Individual Preserve Nappy	2.00	2.20	22	160	160					
68						161					
69						162					
70						163					
71	5 1/2 in. Three-Ftd. Bowl, Straight	4.80	5.30	7	140	164					
72	6 1/2 in. Three-Ftd. Bowl, Flared	4.80	5.30	7	140	165					
73	5 1/2 in. Three Ftd. Bowl, Cupped	4.80	5.30	7	130	166					
74						167					
75	9 1/2 in. Footed Cake Salver	8.00	8.20	2	110	168					
76	7 1/2 in. Footed Fruit Bowl, Rd. Shape	8.00	8.80	2	110	169					
77	5 1/2 in. Footed Preserve Bowl	5.25	5.80	6 1/2	130	170					
78	6 in. Ftd. Preserve Bowl, Belled	5.25	5.80	6 1/2	130	171					
79	5 1/2 in. Tall Ftd. and Hld. Comport	7.50	8.25	3 1/2	120	172					
80	Ftd. Celery Dip, or Almond, Rd.	2.25	2.45	50	160	173					
81	Ftd. Celery Dip or Almond, Bld.	2.25	2.50	50	160	174					
82						175					
83	6 1/2 in. Covered Butter	5.50	6.05	6	160	176					
84	Covered Sugar, Handled	5.00	5.50	6 1/2	160	177					
85	English Open Hdl. Sugar	3.00	3.30	9	160	178					
86	Family Set Cream	3.00	3.30	10	160	179					
87	8 in. Hld. Spoon Tray	8.00	8.30	9	150	180					
88	Finger Bowl	2.50	2.75	20	160	181					
89	Finger Bowl Plate	2.70	2.95	25	170	182					
90	Berry Sugar	3.00	3.30	10	140	183					
91	8 oz. Berry Cream	2.50	2.75	14	150	184					
92	4 1/2 oz. Hld. Berry Sugar	2.30	2.55	20	170	185					
93	Berry Cream	2.00	2.20	20	170	186					
SPECIAL FLAT RIM WARE											
103	8 oz. Syrup and Cover	6.00	6.60	13	130	187	5 in. Hdl. Nappy Cupped	3.20	3.50	11	140
104	8 oz. Syrup Cover and Plate	9.00	9.90	12	150	188	5 1/2 in. Hdl. Nappy Belled	3.20	3.50	9	150
105	12 oz. Syrup and Cover	7.00	7.70	10	130	189	5 1/2 in. Hdl. Nappy Straight	3.20	3.50	9	140
106	12 oz. Syrup Cover and Plate	10.50	11.85	8	150	190	6 in. Hdl. Nappy Curved	4.00	4.40	10	140
107	Jam Jar and Cover	4.00	4.40	15	180	191	6 1/2 in. Hdl. Nappy Belled	4.00	4.40	11	150
108	Jam Jar Cover and Plate	7.00	7.70	9	150	192	6 1/2 in. Hdl. Nappy Straight	4.00	4.40	10	140
109	Hdl. Ftd. Horse Radish and Cover	4.50	4.55	15	150	193	6 in. 2-Hdl. Nappy Cupped	4.50	4.95	7 1/2	130
110	Mustard and Cover	3.00	3.20	40	150	194	6 1/2 in. 2-Hdl. Nappy Belled	4.50	4.95	8	140
111						195	6 1/2 in. 2-Hdl. Nappy Straight	4.50	4.95	7 1/2	130
112	4 oz. Tall Vinegar or Oil Ground Stopper	6.00	6.00	24	170						
113	6 oz. Tall Vinegar or Oil Ground Stopper	7.00	7.70	10	130						
114	6 oz. Squat Vinegar or Oil Ground Stopper	7.00	7.70	10	150						



No. 144
1/2 lb. Candy Jar



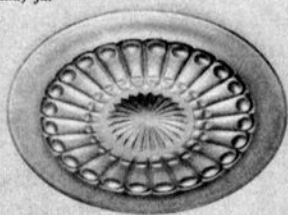
No. 145
3/4 lb. Candy Jar



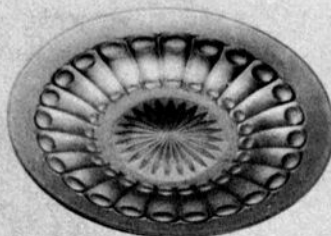
No. 146
4 inch Sweetmeat



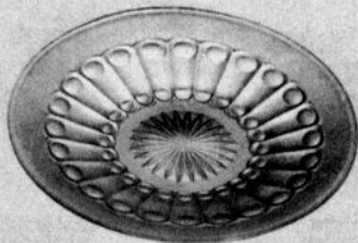
No. 147
3 1/4 inch Sweetmeat



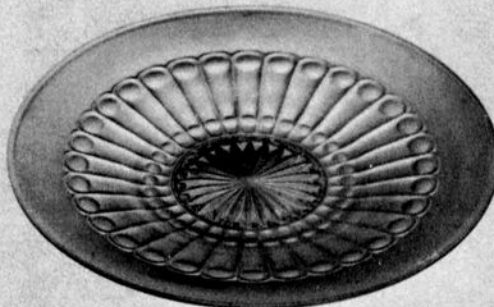
No. 150
5 1/4 inch Plate



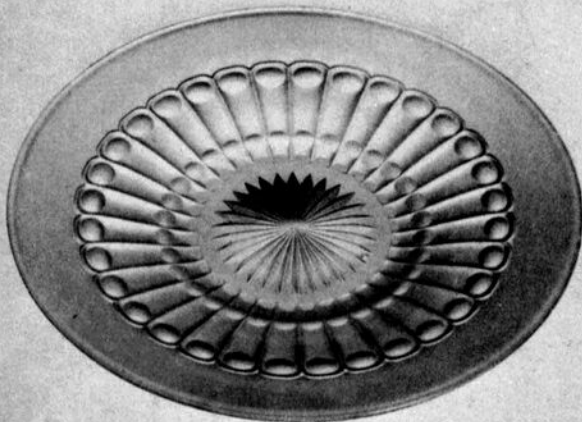
No. 151
6 1/2 inch Plate



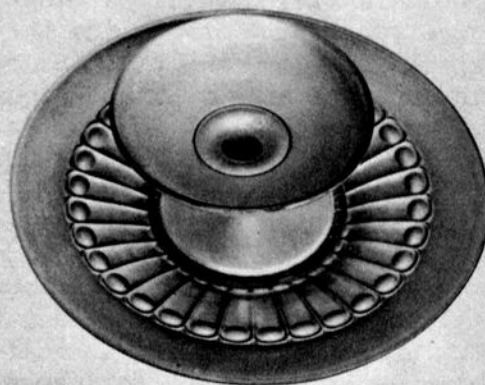
No. 152
7 1/4 inch Plate



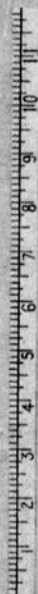
No. 153
9 1/4 inch Plate



No. 154
11 1/4 inch Plate



No. 155
9 3/4 inch Cheese and Cracker



"Little Things"

by Doris Isaacs

When we left Ohio in 1978, we sold many of the lovely pieces of Cambridge glass that we had collected during the seven years we had lived in Cambridge, Ohio. However, my husband Roy's "little things" collection, accompanied us to California.

Since writing an article for the CRYSTAL BALL (June, 1978), we have had many requests to identify and describe in more detail the many pieces we had pictured in the article. I have attempted to do this in the last few articles I have written, and I will continue to do so in the future.



PHOTO #1

Pictured in Photo's #1 and #2, is a blown, tankard type, pitcher with an applied handle and a capacity of 15 oz. This tankard was made in several sizes, with various decorations, as well as plain. The base diameter measures 3-3/8" and it is 5 1/2" high.

The intricate cut design on this piece is of such fine quality that it has been admired and coveted by American Brilliant Cut Glass collectors. It has great depth in the cutting of a fowl standing in foliage on one side; flowers and foliage on the other side; and "Ethel" in Old English lettering under the spout. Obviously it was a gift and Ethel must have treasured it as much as we do! It is in beautiful

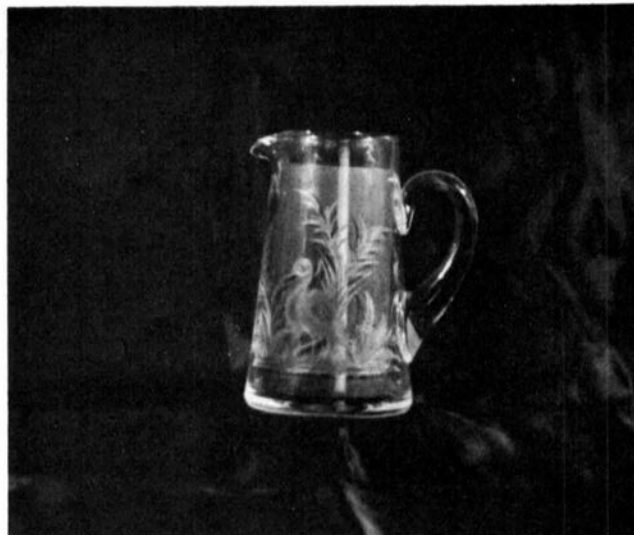


PHOTO #2

condition. (ref: shape only, Bennett 1903 Catalog Reprint, page 41)

Photo #3 is a blown, half-pint, "Rebecca" jug, in crystal with an applied handle. This particular jug was also made in the pint, quart and half-gallon size. There are nine rows of threading around the neck of this jug, and they can be counted by running your fingernail across them much the same way you do in counting the rings on the Hat toothpick holder. The base diameter measures 2" and it is 4 1/2" high. (ref: same as for Tankard)



PHOTO #3

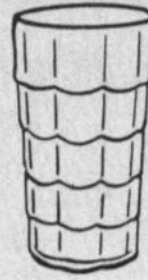
It is our hope that you will receive some of the pleasure out of seeing these "little things" that we have had in collecting them. ————— See you next month!



No. M.V.-55
2 OZ. TUMBLER



No. C-310
10 OZ. TABLE TUMBLER



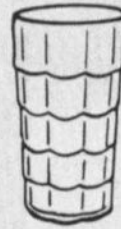
No. CASCADE 14 — 12 OZ. TUMBLER



No. M.V.-57 — 7 OZ. O. F. COCKTAIL



No. 1901 — 2 OZ. WINE



No. CASCADE 15 — 5 OZ. TUMBLER



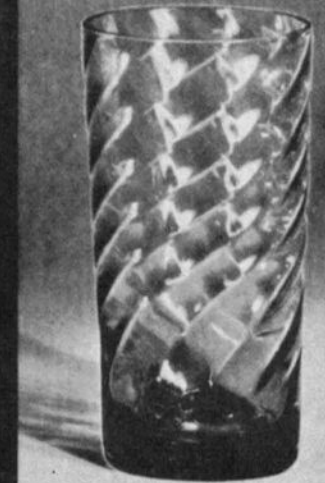
No. M.V.-59
14 OZ. TUMBLER



No. 321 — 1 1/2 OZ. TUMBLER



No. 317 — 5 OZ. TUMBLER



No. 497 — 16 OZ. RANCH TUMBLER

No. 1955 — 14 OZ. TUMBLER



No. 1955 — 10 OZ. TUMBLER



No. 1955 — 6 OZ. TUMBLER



No. 1955 — 3 OZ. TUMBLER



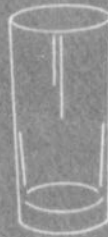
No. 1955 — 1 1/2 OZ. TUMBLER



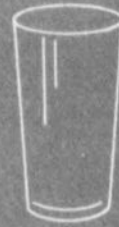
No. 319 — 12 OZ. TUMBLER



No. 1900 — 1 OZ. CORDIAL



No. 497
10 OZ. TUMBLER, SHAM



No. 498 — 5 OZ. TUMBLER



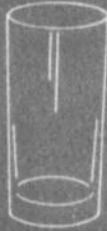
No. 497 — 16 OZ. RANCH TUMBLER



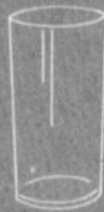
No. 1070 — 2 OZ. PINCHED



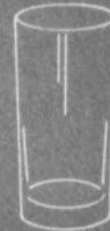
No. 1341 — 1 OZ. TUMBLER



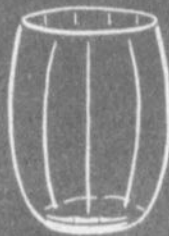
No. 497
12 OZ. TUMBLER, SHAM



No. 498 — 10 OZ. TUMBLER



No. 497
14 OZ. TUMBLER, SHAM



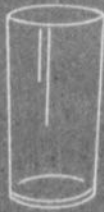
No. 3900/115 — 13 OZ. TUMBLER



No. 319 — 9 OZ. TUMBLER



No. 498 — 14 OZ. TUMBLER



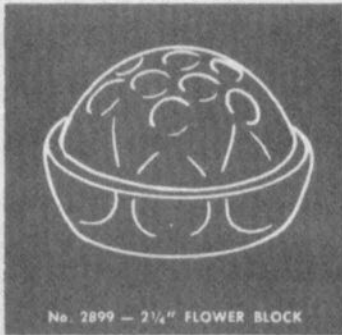
No. 498 — 12 OZ. TUMBLER

Tumblers



THE CAMBRIDGE GLASS COMPANY, CAMBRIDGE, OHIO, U.S.A.

Floral Arrangers



Candlesticks



No. P-493
2 1/4" CANDLESTICK, SQ.



No. P-492
1 3/4" CANDLESTICK, SQUARE



No. 1596 — 6 1/2" CANDLESTICK



No. P-499
6 1/2" CALLA LILY CANDLESTICK



No. 1596 — 6 1/2" CANDLESTICK



THE CAMBRIDGE GLASS COMPANY, CAMBRIDGE, OHIO, U. S. A.



**OBTAINED A
NEW MEMBER?**

MEMBERSHIP CONTEST UNDER WAY

Our Membership Drive this next year will earn some lucky member a nice prize for bringing in the most NEW Members. The contest will end **May 15, 1980** and the prize will be:

**PAID REGISTRATION (for 1)
to the 1980 NCC CONVENTION!**

Do you need Membership Applications?

Do you need "Complimentary" copies of the CRYSTAL BALL?

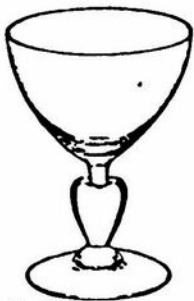
If so, let us hear from you and we will send them off to you. We want to do all we can to help YOU become the **winner** who will receive his/her Registration fully paid to the 1980 NCC Convention.

Naturally NCC is going to be the **BIG WINNER** in this contest — and we need **YOUR HELP!**

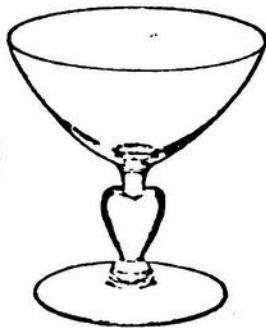
3795 LINE

STEMWARE

Sweetheart



Cocktail



Low Sherbet



Cordial

**BOOKS
FOR SALE**

All of the available reference books relating to Cambridge glass can be ordered directly from the Club.

Address your orders for any of the following to:

BOOK

National Cambridge Collectors, Inc.
P.O. Box 416
Cambridge, Ohio 43725

Please add \$1.00 (P & I) on each book order.
(Not required for Price List only orders)

Ohio residents please add 4½% State Sales Tax.

★
by **National Cambridge Collectors, Inc.**

1949-1953 CAMBRIDGE GLASS CO. CATALOG REPRINT
(300 page reprint of original catalog)
Hardbound with Price Guide \$14.95

1930-1934 CAMBRIDGE GLASS CO. CATALOG REPRINT
(250 page reprint of original catalog)
Hardbound with Price Guide \$14.95

1978 PRICE GUIDE
for 1930-1934 catalog reprint \$2.00

★
by **Mary, Lyle, and Lynn Welker**

CAMBRIDGE GLASS CO.
(120 pages of reprint from 8 old catalogs) \$6.95

CAMBRIDGE GLASS CO. BOOK II
(119 pages of reprint from old catalogs) \$6.95

CAMBRIDGE, OHIO GLASS IN COLOR II
(15 color plates w/descriptions and notes) \$5.95

★
by **Harold and Judy Bennett**

THE CAMBRIDGE GLASS BOOK
(96 pages with 59 color plates) Paperback \$7.95

1903 CAMBRIDGE GLASS CO. CATALOG REPRINT
(106 page reprint of an original catalog) \$7.50

★
by **Charles and Mary Alice Upton**

1979 PRICE GUIDE to the CAMBRIDGE GLASS BOOK
(Prices for each item in Bennett book) \$2.00

★ ★

— Classified —

WANTED: NEARCUT! 10" lamp shade in Wheat Sheaf pattern. Base for Daisy punch bowl. William C. Smith, 4003 Old Columbus Rd., Springfield, Ohio 45502. Phone: 513-323-3888.

WANTED (For Private Collection)



Etched "Vintage" or
"Old Fashioned Grape" #401
(Paneled or Plain)

WRITE:

(Include description and desired
price of each item)

Margaret Scheffer
663 Ecton Road
Akron, OH 44303
(216) 864-8912

Notes From Cambridge Glass Workers

Compiled by Lynn Welker

Almost all the prisms used by the Cambridge Glass Company were imported from Czechoslovakia.

Supposedly, those stores ordering a large quantity of blue Caprice for display, received an 8½" moonlight blue Swan to be displayed with the Caprice. Where did they all swim away to?

Many of the early patterns of Cambridge glass were poured in molds brought to the factory by the National Glass Company from the Findlay, Ohio and Albany, Indiana plants.

In many workers' homes, portieres, chains made of various colored glass rings, can be seen hanging in doorways. These were supposedly made during the workers' free time. They can be found in both single and double door sizes and make a graceful arch out of a square doorframe.

If you know of any interesting anecdotes about Cambridge Glass, the factory, or its workers, please write us about them so we can share them with other members.

A NEW YEAR'S RESOLUTION

*Let me be a little kinder,
Let me be a little blinder,
To the faults of those about me;
Let me praise a little more.
Let me be when I am weary
Just a little bit more cheery;
Let me serve a little better
Those that I am striving for.
Let me be a little braver
When temptation bids me waver;
Let me strive a little harder
To be all that I should be.
Let me a little meeker
With my brother who is weaker;
Let me think more of my neighbor
And a little less of me.*

- Author unknown.

12th Annual Antiques Show and Sale

Sponsored by

Beta Sigma Phi Sorority of Reynoldsburg, Ohio

SATURDAY, MARCH 8, 1980 11 A.M. - 9 P.M.

SUNDAY, MARCH 9, 1980 12 NOON - 6 P.M.

Arts and Crafts Building—Ohio State Fairgrounds

Exit 17th Ave I-71 Columbus, Ohio

Show Chairman
Mrs. Murray Youtz

1519 Lexdale Drive
Reynoldsburg, Ohio 43068

BENEFIT: REYNOLDSBURG POLICE DEPT
FRIENDS OF PICKERINGTON PARK

Donation \$1.25

Show Manager
George Hoffman
129 S. Fourth Street
Newark, Ohio

DEALERS



DIRECTORY

NOTE: When writing to the Dealers listed here, please enclose a SASE!

<p><i>YOU CAN ADVERTISE YOUR ANTIQUE SHOP HERE!</i></p> <p>1 inch - \$6 for six months</p>	<p>BENICIA ANTIQUE SHOP 305 First Street Benicia, California 94510</p> <p>OPEN 11 AM - 5 PM Closed Monday</p> <p>Z. E. LOPES 707-745-0978</p> <p>VISIT HISTORIC BENICIA and its 28 shops</p> <p>Off Interstate #80 North of San Francisco</p>	<p>CHARLES MIKULIK Box 416 Elizabeth, N.J. 07207</p> <p>Phone 201-372-1101 BY APPOINTMENT ONLY!</p> <p>Always buying CAMBRIDGE BLUE CAPRICE in blown or unusual pieces only.</p> <p>CARRY MOST TYPES OF ANTIQUES</p>
<p>EVELYN M. ALLEN 135 Cynthia Street Heath, Ohio 43055</p> <p>Mail Order & Shows 614-522-1635 SPECIALIZING IN CAMBRIDGE GLASS!</p>	<p>CHURCH STREET ANTIQUES 6 Church Street Boston, Massachusetts 02116</p> <p>George or Frank 617-426-1048</p> <p>CAMBRIDGE, HEISEY, GENERAL LINE</p>	<p>COYLE & SCHUSTER ANTIQUES Box 982 - Ph. 614-349-7362 Newark, Ohio 43055</p> <p>Shows & Mail Order BUY & SELL - CAMBRIDGE - HEISEY</p>
<p>BLACK ROOSTER ANTIQUES 1018 Clark Street Cambridge, Ohio 43725</p> <p>614-432-3202 M. Sipe CAMBRIDGE GLASS - GENERAL LINE</p>	<p>D & D ANTIQUES 184 East Kossuth Street (GERMAN VILLAGE) Columbus, Ohio 43206</p> <p>DICK SLIFKO 614-443-6020</p>	<p>D'MARIE'S ANTIQUES US Rt. 1 - just South of Rt. 606 Thornburg, Virginia 22565</p> <p>703-582-6220 Jim Rankin OPEN EVERY DAY 10 AM to 6 PM</p>
<p>THE GLASS CUPBOARD 39 Shire Oaks Drive Pittsford, New York 14534</p> <p>Marcia Ellis 716-586-7596 CAMBRIDGE ONLY SASE FOR LIST</p>	<p><i>YOU CAN ADVERTISE YOUR ANTIQUE SHOP HERE!</i></p> <p>1 inch - \$6 for six months</p>	<p>'OUR GLASS ANTIQUES Box 27, Wills Point, Texas 75169</p> <p>20th CENTURY COLLECTIBLES featuring CAMBRIDGE GLASS! Shows - No Lists - SASE Please</p> <p>PAUL & GINNY HENDERSON 214-563-6971</p>
<p>HOBBY HOUSE ANTIQUES 5323 Sarchets Run Rd. Cambridge, Ohio 43725</p> <p>614-432-6971 Lena Barnes Take Rt. #209 West from Cambridge to Rt. #658 - North 1-1/2 miles</p>	<p>GEORGE HOFFMAN ANTIQUES 129 South 4th Street Newark, Ohio 43055</p> <p>614-345-8021</p>	<p>1886 HOUSE East Schodack, N.Y. 12063</p> <p>MAIL and SHOWS</p> <p>Laurie Cruise 518-477-5895 CAMBRIDGE - NORITAKE - AZALEA - D.G.</p>
<p>LASHER ASSOCIATES 119 Water St. Gaithersburg, Md. 20760</p> <p>Faith Lasher 301-977-8296 SPECIALIZING IN GLASSWARE</p>	<p>ROLLING ACRES ANTIQUES 66484 N. 8th Street Road Cambridge, Ohio 43725</p> <p>Sandy Jenkins & Anne Ingram 614-432-2570</p> <p>CAMBRIDGE & GENERAL LINE ANTIQUES</p>	<p>THE MOUSE HOUSE ANTIQUES Route 22 East Cambridge, Ohio 43725</p> <p>Shirlee Bistor 614-432-3132 SPECIALIZING IN GLASSWARE!</p>
<p>WICKFORD ANTIQUE ARCADE 650 Ten Rod Road North Kingstown, RI 02852</p> <p>The Clausons 401-295-7520 SPECIALIZING IN GLASSWARE</p>	<p>M & M ANTIQUES & COLLECTIBLES 310 N. Main - Box 417 Canton, Kansas 67428</p> <p>The Martin's 316-628-4705 SPECIALIZING IN CAMBRIDGE GLASS!</p>	<p><i>YOU CAN ADVERTISE YOUR ANTIQUE SHOP HERE!</i></p> <p>1 inch - \$6 for six months</p>
<p>BILL & SHARON PHILLIPS 21730 Priday Euclid, Ohio 44123</p> <p>Ph. 216-261-4665 Shows Only BUYING GLASS, ANTIQUES, ETC.</p>	<p>THIS 'N' THAT PLACE 101 South Street Chagrin Falls, Ohio 44022</p> <p>Lue Koerper 216-247-4938 OPEN THURS. - SAT. 10 AM - 5 PM</p>	<p>SWISS HILLS COLLECTIBLES Mary & Wilbur Henderson 303 Guilford Avenue Woodsfield, Ohio 43793</p> <p>Mail & Shows 614-472-1133 SPECIALIZING IN CAMBRIDGE GLASS!</p>



National Cambridge Collectors, Inc.

P. O. Box 416, Cambridge, Ohio 43725

A nonprofit organization dedicated to the preservation and study of Cambridge Glass

You Are Cordially Invited
To Become A Member Of The

NATIONAL CAMBRIDGE COLLECTORS, INC.

Benefits derived from membership include: receipt of our club publication, The Cambridge CRYSTAL BALL; informative Quarterly Meetings; Antique Shows; Auctions; and other special events.

The Cambridge CRYSTAL BALL is published the first of each month. This newsletter contains educational and interesting articles, questions and answers, information on reproductions and reissues, notices of all club functions, classified advertisements, dealers directory, and many other features of interest to collectors of Cambridge Glass.

Yearly dues are \$10.00 for Individual Members and \$3.00 for each Associate Member. All members have voting rights, but only one issue of the CRYSTAL BALL will be mailed per household.

Name (please print) _____ \$10.00

Mailing Address _____

City _____ State _____ Zip _____

Associate Members: (Must be at least 12 years of age and living in the same household.)

1. Name _____

2. Name _____

3. Name _____

Total number of Associate Members _____ @ \$3.00 each \$ _____

TOTAL AMOUNT ENCLOSED: \$ _____

Please make check payable to: NATIONAL CAMBRIDGE COLLECTORS, INC.

Recommended by _____

QUARTERLY MEETING NOTICE

NCC QUARTERLY MEETING
FEBRUARY 29, 1980

8 PM



Shenandoah Inn

INTERSTATE 70 - EXIT 186 - 7 MILES EAST OF
CAMBRIDGE, OHIO

An interesting Program is
being planned for your
enjoyment.

There will also be a "Show & Tell" session!
(Bring your Questionable items.)

MAKE PLANS NOW TO ATTEND!

National Cambridge Collectors, Inc.
P.O. Box #416
Cambridge, Ohio 43725

FIRST-CLASS MAIL
U.S. POSTAGE
PAID
So. Vienna, Ohio
45369
Permit No. 15

FIRST CLASS MAIL

NATIONAL CAMBRIDGE COLLECTORS, Inc.
AUCTION INFORMATION

AUCTIONEER: CRAIG CONNELLY ADMISSION: \$1.00

LOCATION: Shenandoah Inn
Intersection I70 & Route 285
Old Washington, Ohio (6 miles east of Cambridge)

TIME: March 1, 1980 PREVIEW: 9:30A.M. AUCTION: 11:00A.M.

All glass guaranteed to be Cambridge. The auction committee has attempted to check all glass to be auctioned. All pieces should be examined immediately and returned before five pieces are sold if the article is not perfect or as represented. There will be a few pieces sold with minor damage. These pieces are indicated in the catalog.

TERMS: Cash or check with proper identification day of sale. All sales are subject to Ohio Sales tax. 4½% sales tax will be charged. Dealers may sign an exemption form if the items purchased are for resale, in which case, no tax will be charged.

CATALOG INSTRUCTIONS: References used will be abbreviated as follows: NCC30-34: National Cambridge Collectors' Catalog I
NCC49-53: National Cambridge Collectors' Catalog II
WI: Welker's Cambridge Glass Co. Catalog Reprint I
WII: Welker's Cambridge Glass Co. Catalog Reprint II
The number in parenthesis () at the end of each listing indicates the amount of items of that particular listing to be sold. Bidding will be by the piece if a number occurs or as a lot if pair, set, or lot is indicated at the end. Bring this catalog to the auction.

MAIL BIDS: All bids must be accompanied by a check for each item for the full amount bid. Bids will be executed secretly, and the bidder will pay only the final price not the full amount of the mail bid. Please include a stamped, self-addressed envelope with your bids. You will be notified if you were the successful bidder. If not, your check(s) will be returned and the final selling price, noted. Ohio residents please include 4½% Sales tax or your Vendor's #. If you wish to have the piece(s) shipped to you, please include a separate check for adequate shipping and insurance. All piece(s) will be shipped via UPS the week immediately following the auction. If you do not wish to have the piece(s) shipped, please indicate where and when you will pick up the piece(s). All mail bids should be addressed to :

Lynn Welker
2 East Main Street
New Concord, Ohio 43762

To be eligible: Bids must be received by February 28, 1980.

Motel Reservations: Phone 614-489-5511. Food will be available on the premises. Please park in the motel section behind the inn. The rooms are very nice and prices reasonable.

QUARTERLY MEETING: Friday February 29, 1980, 8:00P.M. at the Shenandoah Inn. An informative meeting will be presented as well as a preview of the auction glassware. Bring a friend and your Show & Tell glass.

Additional information: Phone 614-326-4418.
Additional auction catalogs: \$1.00 postpaid.

Please remember if you are mail bidding on a lot with more than one item in it, and there is a number in parenthesis () at the end of the lot, indicate the number you are bidding on and the price for each. Please send separate checks for each lot bid on and a separate check for the postage. This will make it much easier in refunding any money if you do not receive every lot you bid on. All items are sold in perfect condition and you may expect to receive them that way if you mail bid as they will be carefully checked again before shipping.

PLEASE BRING THIS LIST TO THE AUCTION!

1. #3400/48 Ebony 12" 4 ftd. crimped bowl, WI, p17
2. #1337 Amethyst cigarette urn, crystal ashtray foot, WI, p28
3. Farberware bar carrier, #3400/156-12 oz. decanters-Amber, Forest Green, Royal Blue (slight stains) & stoppers (set)
4. Seashell #33 Crown Tuscan 4" ashtrays, enamel roses & gold (2)
5. #1203 Carmen, Forest Green 7 oz. old fashioned, NCC30-34, p33B8 (2)
6. #1203 Carmen 8 oz. tumbler, NCC 30-34, p33B8
7. #1070 Amber 36 oz. pinch decanter & stopper, original label
8. P499 Mandarin Gold Calla Lily candlesticks, NCC 49-53, p151 (pair)
9. #606 Peachblo celery dips, signed, NCC 30-34, p37 (3)
10. #20 Amber sugar & creamer, WI, p109 (pair)
11. #675 Peachblo 9½" flip bowl, signed, NCC 30-34, p71
12. #1355 Crystal 2 light candelabras NCC 30-34, p34-15 (2)
13. #3143/39 Moonlight Blue Gyro Optic 86 oz. pitcher and 3143/50 Moonlight Gyro Optic 13 oz. tumblers (6) WI, p84 (set)
14. #3900/118 Moonlight Blue Gyro Optic 32 oz. pitcher and 3900/118 Moonlight Gyro Optic 5 oz. tumblers (4) NCC 49-53, p40C (set)
15. Yardley jar, flesh colored opaque, original plastic lid
16. Primrose ladle, gold trim (rare)
17. #62 Heliotrope 7¾" dia. compote, gold etched, WI, p106
- The following are rock crystal cut #18 through #24
18. Laurel Wreath #3700 9 oz. goblet
19. Rondo #7966 iced tea or low goblet (2)
20. Rondo #7967 (Melody blank) low sherbet, NCC49-53, p154-D
21. King Edward #3700 9 oz. goblet, NCC 49-53, p111
22. Montrose #3700 9 oz. goblet, NCC 49-53, p130
23. Roxbury #3775 10 oz. goblet, NCC 49-53, p132
24. Unknown cut #3750 10 goblet,
25. Peachblo crackle 14 oz. flared tumbler
26. #1070 Peachblo Crackle 36 oz. pinched decanter & stopper, rare
27. P384 Crystal Pristine 11" oval bowl, NCC 49-53, p6
28. #3078 Carmen 12 oz. tumblers, NCC 30-34, p33-17 (4)
29. #496 Crystal 12 oz. Fall Joe, original portrait decoration
- The following are all goblets #30 through #52
30. #3130 8 oz. Gold Krystol 8 oz. etch Appleblossom (2)
31. #3025 Gold Krystol etch Gloria, Amber stem & foot, NCC30-34, p31-5
32. #3111 Heatherbloom 10 oz. Crystal stem & foot
33. #3111 Carmen 10 oz. Crystal stem & foot
34. Carmen, Crystal stacked discs stem & foot (2)
35. #3126 Forest Green, Crystal stem & foot 9 oz. (2)
36. #3126 Amber, Crystal stem & foot 9 oz. (2)
37. #3126 Royal Blue, Crystal stem & foot 9 oz.
38. #1066 Emerald 11 oz. Crystal stem & foot (2)
39. #1066 Carmen 12 oz. Crystal stem & foot
40. #1401 Emerald 10 oz.
41. #3500 Carmen 10 oz. Crystal stem & foot
42. #3500 Amber 10 oz. Crystal stem & foot
43. #3798 Crystal Cambridge Square, platinum trim
44. #3122 Royal Blue 9 oz. Crystal stem & foot
45. #4000/1 Crystal Cascade
46. #3077 Willow Blue 9 oz.
47. #3077 Light Emerald Green 9 oz.
48. #3077 Peachblo 9 oz. etch Cleo, NCC 30-34, p12
49. #3115 Light Emerald 9 oz. etch #733, Crystal stem & foot
50. #5000/1 Crystal 9 oz. Hierloom (Martha Washington)
51. #3124 Crystal 10 oz.
52. #7801 Amber 10 oz. (2)
53. #3035 Heatherbloom 6 oz. low sherbets, etch #731 (5)
54. #1540 Crystal Checkerboard 28 oz. decanter & stopper, WII, p18
55. #1284 Forest Green 10" vase, crystal foot (shape NCC 30-34, p32-7)
56. P572 Carmen Pristine vase 6", NCC 49-53, p152-B
57. #1110 Peachblo dessert molds, NCC 30-34, p 42 (4)
58. #1147 Peachblo ice tub, signed, NCC 30-34, p46
59. #749 Carmen Decagon 6¼" candy, 2 handled, NCC 30-34, p27
60. #47 Ivory 6¾" comport, WI, p106
61. #1715 Royal Blue ashtray/candleholder, WI, p21
62. Seashell #34 3" ashtrays, 2 Moonlight, 1 Gold, 2 Mocha, 1 Pistachio (chip) (6)
63. Seashell #34 3" ashtrays, Mandarin Gold, original labels (6)
64. Seashell #34 3" ashtrays, Crown Tuscan, enamel roses & gold (4)
65. Jade 10" bowl and 10" Twist candlesticks (pr.) (3 pc. set)

56. #3500/44 Royal Blue 8" urn vase, NCC 30-34, p33-15
57. #28 Peachblo 16½" Buffalo Hunt cupped bowl, satin outside, WI, p70
58. #9403 Crystal 12 oz. tumbler, D987 enamel Scotty, NCC30-34, p31-20
59. #1098 Amber Decagon 5" fruit, belled, signed, NCC 30-34, p20
60. #24 Crystal Everglades sherbet, NCC 30-34, p33-25
61. #25 Crystal Everglades 8½" plate, NCC 30-34, p33-25
62. #3011/8 Royal Blue Nude sauterne, NCC 30-34, p34-2
63. Rubina Honeycomb 9½" bowl, signed, scratched
64. Crystal Canape tray (with cocktail ring), etched chickens (8)
65. Ivory Doric Column 10" candlesticks (match Ram's Head) (pair)
66. #3400/38 Royal Blue 12 oz. tumblers, NCC 30-34, p33-7
67. #3400/38 Peachblo 80 oz. jug, NCC 30-34, p33-7
68. Royal Blue Top Hat cigarette holder, WI, p28
69. #1136 Crystal 8½" heron flower figure, WI, p32
70. Blue Willow etching 6" plate, green enamel encrusted
71. Same as #81, minor factory chip under gold trim
72. #15 Primrose 8½" bowl, black enamel trim, WI, p105
73. Light Emerald Green Mt. Vernon or Stratford 10½" candlesticks(pr)
74. Rubina Honeycomb 8½" comport (red/green), faintly signed
75. #1242 Crystal 10" vase, rock crystal cut Maryland, WI, p51
76. #3797/40 Crystal Cambridge Square individual sugar, NCC 49-53, p36C
77. #3400 Amber Cream & sugar, Farber holders (Cream handle crack)(pr)
78. #6 Crystal Arcadia 2½ oz. wine, WII, p44
79. #3 Crystal flower block
- The following are ivy balls #90 through #95
80. #1066 Amethyst, stem & foot turned lavender, NCC 49-53, p26
81. #1066 Mandarin Gold, stem & foot Gold also, rare, "
82. #1236 Crown Tuscan, ring stem, NCC 49-53, p32
83. #1236 Amethyst, Crystal ring stem & foot, NCC 49-53, p32
84. #1236 Royal Blue, Crystal ring stem & foot, NCC 49-53, p32
85. #1236 Gold Krystol, Amber ring stem & foot, rare "
86. #3011/13 Amethyst Nude 1 oz. brandy, NCC 30-34, p 34-2
87. #1040 Peachblo 3½" swan, signed (large fin chip), long wing style
88. #1041 Peachblo 4½" swan
89. #1042 Peachblo 6½" swan (flake bottom of middle tail feather)
90. #1043 Peachblo 8½" swan, signed (damaged bill)
91. #1042 Crystal 6½" swan
92. Jenny Lind Crystal 6½" footed bowl
93. #3450 Royal Blue salt/pepper, Crystal tray, WI, p24 (set)
94. #91 Heliotrope 10¾" bud vase, gold trim, WI, p100
95. #1 Crystal muddlers, NCC 30-34, p34-21 (6)
96. #3400/103 Gold Krystol 6½" globe vase, permanent brass filigree holder is damaged, etched Appleblossom
- The following are all Georgian Line #107 through #119
97. #317 Carmen 5 oz. tumbler, WII, p37
98. #317 Moonlight 5 oz. tumbler (2)
99. #317 Emerald 5 oz. tumbler
100. #317 Amber 5 oz. tumbler (4)
101. #319 Moonlight 9 oz. tumbler, WII, p37
102. #319 Carmen 9 oz. tumbler (11)
103. #1202 Moonlight 12 oz. tumbler, NCC 30-34, p33-B-8
104. #1202 Carmen 12 oz. tumbler
105. #1202 Heatherbloom 12 oz. tumblers (2)
106. #319C Peachblo candy base only, WII, p37
107. #319C Mandarin Gold candy base only
108. #319C Smoke candy base only
109. #317S Pistachio sherbet, WII, p37
110. Seashell #15 Windsor Blue shell comport, signed, WI, p46, rare
111. #3011 Carmen 8" tall Nude comport, cupped, NCC 30-34, p34-2
112. #1066 Royal Blue 7 oz. tall sherbets, Crystal stem & foot (6)
113. #3500/47 Royal Blue 2 hldd bon bon or candy, NCC 30-34, p33-14
114. Seashell #46 Royal Blue 7½" shell flower holder, rare, WI, p47
115. #3400/144 Carmen cigarette holder, Crystal ashtray foot, WI, p28
116. #1917/88 Amber covered candy jar, unknown etching
117. #680 Amber compact, covered dresser arranger
118. #16 Heliotrope 7" bowl, signed, WI, p105
119. #3011/9 Crown Tuscan Nude cocktail, Gold Krystol bowl
120. #3400/98 Peachblo sugar & creamer, NCC 30-34, p33-7
- The following are all Nearcut #131 through #142
121. #2631 Marjorie punch cup, signed
122. #2631 Marjorie berry creamer, signed, WII, p108

133. #2651 Feather cakestand, signed, WII, p105
 134. #2651 Feather goblet, gold trim worn, minor underbase chip
 135. #2651 Feather punch cups (2)
 136. #2699 Buzz Saw #269-5" nappys, signed (1 bruised) (6), WI, p116
 137. #2699 Buzz Saw sherbet
 138. #2766 Thistle tumblers, signed (6)
 139. #2766 Thistle 4½" berry bowls, olive green, signed (2)
 140. Daisy sugar base, creamer, spooner (chip), signed (set)
 141. Star champagnes (6)
 142. Unknown pattern berry bowl, signed
 143. #3500 Gadroon Crystal 3 light oval candleholder
 144. #867 Peachblo sugar & creamer, etch Cleo, gold trim, NCC 30-34, p10
 145. #1138 Crystal 8½" Seagull flower figure, WI, p32
 146. #3143/39 Pistachio 86 oz. Gyro Optic jug and #3143/50 Pistachio Gyro Optic tumblers (6), WI, p84 (set)
 147. Royal Blue mustard, 7 oz. Farber holder & lid
 148. Crown Tuscan unusual 8½" X 9" ribbed vase
 149. Amber Laurel Wreath border nameplate
 The following are all Mt. Vernon #150 through #159 (NCC30-34, pp32-26 through 32-28)
 150. #8 sugar & creamer, Gold Krystol (set)
 151. #9-9 oz. goblet, Royal Blue
 152. #29 mustard with spoon, Royal Blue
 153. #21-5 oz. ftd. tumbler, Carmen
 154. #22-3 oz. ftd. tumbler, Carmen
 155. #22-3 oz. ftd. tumbler, Forest Green
 156. #22-3 oz. ftd. tumbler, Mocha
 157. #88 salt & pepper, Crystal (hole broken in one lid) (pair)
 158. #50-6½" vase, Crystal
 159. #16-3" toilet box, Crystal
 160. #550 Light Emerald Lemonade mug, gold encr. trim, signed
 161. #53 Azurite 8" compote, black enamel etched Peacocks, rare, WI, p106
 162. Light Emerald 11" bowl, wide optic border, signed
 163. #3500/69 Forest Green 6½" 3 compt. relish, Farber base
 The following are all Tally-Ho #164 through #170 (Refer NCC 30-34, pp32-33, 32-35)
 164. #1402/4-10 oz. lunch goblets, Royal Blue(4)
 165. #1402/8-5 oz. low stem juice, Royal Blue (5)
 166. #1402/10-3 oz. cocktail, Royal Blue
 167. #1402/1-18 oz. goblet, Amber (2)
 168. #1402/4-10 oz. lunch goblet, Carmen
 169. #1402/13-1 oz. cordial, Amber (2)
 170. #1402/35-12 oz. stein, Gold Krystol
 171. #675 Amber 10" flip bowl, optic, NCC 30-34, p71
 172. #3500/64 Crystal 12" 3 compt relish, NCC 30-34, p33-13
 173. Pistachio Stradivarius 1 oz. cordial (ground), WI, p64
 174. Amethyst Stradivarius 1 oz. cordial, WI, p64
 175. Amethyst Stradivarius 3½ oz. cocktail, WI, p63
 176. Mocha Stradivarius 3½ oz. cocktail, WI, p63
 177. #3111 Amethyst 2½ oz. wine, WII, p52
 178. Light Emerald Narrow Optic ftd. tumbler, gold encr. #718 Hunt Scene
 The following are all etchings on Crystal #179 through #199
 179. Blossomtime #3675-10 oz. goblet
 180. Candlelight #3111-10 oz. goblet
 181. Chantilly #3900/41 sugar & creamer (pair)
 182. Chantilly 6½" clarets, Farber filigree holders (2)
 183. Chantilly #3625-10 oz. goblets (2)
 184. Chantilly #167-12" plate
 185. Chintz etch #760-6½" high compote (blank #532)
 186. Daffodil #3779 iced tea
 187. Diane #3400/60-6" plates (etching in center also) (7)
 188. Diane #3400/61-7½" plates (etching in center also) (8)
 189. Diane #647-6"-2 light candlesticks (decagon base) (pair)
 190. Diane #392-10½" round relish, panelled, 5 part
 191. Diane #3400-9" X 7" oval divided relish, 2 hdd, 4 toed
 192. Diane #3400/175 with #10 top cocktail shaker
 193. Elaine #3111-10 oz. goblet
 194. Hunt Scene #1402/66-6" ftd. mint compote
 195. Magnolia #3790 Simplicity 1 oz. cordial
 196. Marjorie goblet
 197. Portia #3126-4½ oz. claret
 198. Unknown etching #3778-10 oz. goblet, blank WII, p61
 199. Valencia #3500/55-6"-2 hdd. ftd. basket

200. #497 Peachblo hiball tumbler 14 oz, NCC 49-53, p24
201. #2899 Perforated Crystal 4" flower block, patent dated 1916 (2)
202. #759 Ebony Decagon 7" 2 hdd. plate, gold handles, signed
203. #20 Pomona Green ftd. sugar & creamer, rare, WI, p109 (set)
204. #845 Peachblo ice tub & handle, signed, smaller than NCC 30-34, p46
205. Amber pin holder, panelled, signed, celluloid lid original
206. Seashell #35 cigarettebox (no lid) Emerald, NCC 49-53, p151
207. Weatherford Ivory scalloped berry bowl
208. Crystal Pristine divided bowl
209. Heliotrope 10½" Doric Column candlesticks (match Ram's Head)(pr)
210. #3500/109 Amber 12" oblong Ram's Head bowl, rare, WI, p41
211. #94 Rubina sweet pea vase (mostly red), smaller than WI, p100
212. #3011/3 Hea herbloom Nude champagne, optic, rare, NCC30-34, p34-2
213. #72 Ebony 7" candlesticks, WI, p102 (pair)
214. #250 Mocha Martha individual sugar & creamer
215. #3500/15 Amethyst sugar, NCC 30-34, p33-14
216. Heliotrope embossed Laurel Wreath 8½" plate, gold trim
217. Rubina Honeycomb 10" bowl, signed (brownish-red)
218. White Rain sherbet (Crystal with white flakes in glass) rare
219. Blue Cloud sherbet (Crystal with blue flakes in glass) rare
220. #3400 Amber 76 oz. water pitcher, unusual shape
221. #1203 Royal Blue cut flute 10 oz. tumblers, signed (3)
222. #3400/100 Forest Green 76 oz. ball jug, NCC 30-34, p33-7
223. Amber Temple jar (no lid), gold encrusted Peacocks, rare
224. Yardley jar, flesh color opaque, original glass lid
225. Same as #224. glass lid (as is)
- The following are all Caprice #226 through #238
226. #76 Crystal candelabra, double arm, bobèche & prisms, no vases (set)
227. #39 Crystal 3 pc. sugar, creamer & oval tray (set)
228. #235 Crystal rosebowl, 4 ftd.
229. #300 Crystal 9 oz. goblet
230. #1338 Crystal 6"-3 light candlesticks (pair)
231. #106 Moonlight 8" 3 pc mayo set, ftd bowl, liner, blue ladle(set)
232. #183 Moonlight 80 oz. ball jug
233. #61 Moonlight 12½" crimped bowl, 4 ftd.
234. #70 Moonlight 7" candlesticks with prisms (pair)
235. #200 Moonlight goblet
236. #300 Moonlight 9 oz. goblet
237. #151 Emerald 5"-2 handled jelly or candy
238. #300 LaRosa 9 oz. goblet
239. Blue National Cambridge Collectors' Lady Leg bookends (2)
240. #572 Mandarin Gold Cascade 10" vase, NCC 49-53, p 149
241. #47 Amber 6¼" comport, optic
242. Rubina Block Optic 10" vase (mostly blue, green shoulder, red top)
243. #11231 Light Emerald ice pail, etch Chrysanthemum,sgd, NCC30-34,p46
244. #3400/97 Gold Krystal 2 oz perfume, brass filigree holder (cloudy)
245. #1095 Crystal sugar & creamer (cut), ebony tray,NCC30-34,p31-17(set)
246. Light Emerald 8 oz. narrow optic tumblers (3) 7 hdd server (set)
- The following are al Peachblo etch #520-#247 through #251
247. #556-8" plates, signed (5) (lot)
248. #668-6" plates (2) (lot)
249. #933 cups (3) & saucers (5) (lot)
250. #138 sugar & creamer, signed (pair)
251. #168-10" round center handled server
252. Light Emerald 2 pc. cocktail icers, Etch #731 (decagon liners) (4)
253. #3111 Amethyst 1 oz. cordials, Crystal stem & foot, WII,p52 (2)
254. Crystal Satin 12½" bowl, decalware (enamel floral decoration)
255. #489 Crystal jug (no cover)
256. #922 Amber Round cream soup, signed, NCC 30-34, p34
257. #3400/51 Light Emerald 10" baker, signed
258. #31 Heliotrope 9" bowl, WI, p105
259. #387 Amber 2½" ashtray, signed, WI, p25
260. #3143 Gyro Optic 13 oz. tumblers, Moonlight, Amber, Crystal (3)
261. Crystal large shot glasses, engraved stars (4)
- The following are all Light Emerald Decagon #62 through #266
262. #815-7½" plates, signed (11) (lot)
263. #597-8¾" plate, signed
264. #809-6¼" plates, signed (5) (lot)
265. #869-5¾" comport, NCC 30-34, p27
266. #759-7" hdd plate, signed, NCC 30-34, p27
267. Light Emerald Weatherford 11½" plate, lines cut

- _____ 268. P253 Crystal individual sugar & creamer, original labels (pair)
- _____ 269. #647 Crystal 2 light candlestick, unknown cutting
- _____ 270. #988 Crystal 10 $\frac{1}{4}$ " bowl, bead feet, rock crystal Manor, signed
- _____ 271. #836 Light Emerald 5" oval flower block, patent dated
- _____ 272. #2899 Light Emerald 4" round flower block, high domed
- _____ The following are all etched Rosepoint #273 through #293
- _____ 273. #157-7 oz. marmalade, stemmed, Sterling Silver original lid
- _____ 274. #968-2 pc. cocktail icer (shrimper) (5)
- _____ 275. Pristine round 2 pc. cocktail icer (very minor nicks inside top
of bases, no optic (6)
- _____ 276. Pristine round 2 pc. cocktail icer, optic (1)
- _____ 277. #1338-6"-3 light candlesticks (pair)
- _____ 278. #1338-6"-3 light candlestick, candlecup crack (1)
- _____ 279. #3121-10 oz. goblets (6)
- _____ 280. #3121-6 oz. tall sherbet champagnes (1 chip free) (bid on 7)
- _____ 281. #3121-3 oz. cocktail (1)
- _____ 282. #3121-1 oz. cordial (1)
- _____ 283. #3400/4-12" bowl, 4 footed
- _____ 284. #3400/88-8 $\frac{3}{4}$ "-2 compartment bowtie relish, 2 hdd.
- _____ 285. #3500/1 cups & saucers (2 sets)
- _____ 286. #3500/5-8 $\frac{1}{2}$ " plates (6)
- _____ 287. #3500/55-6"-2 hdd. basket, sgd Wallace Sterling Silver base
- _____ 288. #3500/64-12 $\frac{1}{2}$ "-3 compartment relish, 4 toed
- _____ 289. #3500/3 oz. cocktails, 1 chipped (3)
- _____ 290. #3900/115-13 oz. barrel tumblers, plain (14)
- _____ 291. #3900/115-13 oz. barrel tumblers, optic (4)
- _____ 292. #3900/22-8" salad plate, scratch (1)
- _____ 293. #3900/166-14" cabaret plate
- _____ 294. #8701 Light Emerald cloverleaf tray for tumblers, signed
- _____ 295. #663 Crystal epergne base, 3 light, WI, p8 (base only)
- _____ 296. Chelsea Crystal covered comport, floral engraving, small chip
- _____ 297. Seashell #36-3" cigarette box lid only, WI, p47
- _____ 298. Amber 4 $\frac{1}{2}$ " square butter dish base only, signed
- _____ 299. Crystal 1973 Cambridge Collectors' plate (3)
- _____ 300. Blue 1974 Cambridge Collectors' plate (2)

National Cambridge Collectors, Inc.
P. O. Box 416
Cambridge
Ohio 43725

FIRST CLASS MAIL